

۱۱



Welcome to my first and second year portfolio! I'm Sage Canter an adaptable individual with deep appreciation for untouched landscapes, the elegant and unusual. My aim is at bringing the same energy found in nature indoors through architecture and design. Accomplishing this goes hand in hand with environmental awareness and health.

My love for rawness, texture and harmony drives my design philosophy. When an interior talks to space, function, openness, romance, play and the seven design principles - balance, unity, rhythm, emphasis, contrast, scale and proportion, and detail I consider my design goals accomplished. This feeling comes together with the detail of colour theory, play, time and a touch of eccentric when called upon.

Life is made up of lots of decisions, each one being important. I believe that magic in design cannot be solely attributed to financial resources but rather to the love and passion poured into it, together with an eye and good decisions.

Human beings possess the unique gift of sensitivity. Let design touch all the senses in the right way. Let yourself be emotional and good. Thank you for taking the time to explore my portfolio. I hope my work resonates with you and inspires a deeper appreciation for the transformative power of design.

PG

PG 6 - 22

PG 26 - 39

PG 43 - 49

PG 53 - 62

PG 65 - 67

PG 70 - 77

PG 81 - 89

PG 91 - 96

PG 98 - 104

PG 106 - 107

PG 108

PG 109 - 116

CONTENTS

Residential | 24 Fernwood estate Knysna

Residential | boxed | a space to live

Commercial designed space | Boxwood

Competition | pg bison | circle of light

Competition | caesarstone

Residential | On Q | contemporary | first year

Getaway | stay unique | collab with Danielle Goby

Romaverse | groupwork

Textile Design

Product Design vase and chair and lamp

Photography

Technical drawings

Detail I love



GRASSES



TEXTILES



SIMPLICITY



SHUTTERS



BLUE



SEASHELLS



HOMELY ELEGANCE

'SIMPLY BEAUTIFUL LIVING'

01. THE BRIEF | House Bennett

Plot 24 Fernwood Drive, Fernwood Private Estate, Knysna (<https://fernwood-knysna.co.za/>)

Design both the exterior and interior of the Bennetts' new home, keeping the architectural guidelines of the estate and the clients preferred look and feel in mind. The Bennett family consists of Mark (42), Elzette (42), Joe (10), Neve & Kaye (twins of 7) and Bailey the Beagle. The erf that the home will be built on is rectangularly shaped, generously sized and with a gentle gradient posing no real building challenges.

The highlight of the erf are the views ahead of gentle rolling hills with limited sea views above same. An even more impressive view is when one rotates 45° to the right (north-westward) which brings into view the beautiful Knysna lagoon.

It is this lagoon view that the owners cherish and would like to maximise, particularly from the entertainment area and main bedroom, if possible. When standing on the Erf and looking ahead to the rolling hills and sea, a home has already been built on the erf to the left (no. 23), which has fortunately been positioned furthest away from our plot, being no. 24. As can be seen from the cadastral, the building line of the erf to the right (no. 25) is fortunately aligned to the right of the erf and therefore also furthest away from our erf.

The requirements for House Bennett :

- A double story or split-level modern farmhouse / winelands style home of roughly 400 – 450 sqm under roof.
- Charcoal IBR type roof sheeting is preferred.
- Outdoor living space with a pool of approximately 15 – 18sqm.
- Ideally, a generous drive-way to park 4 cars (in addition to 3 x garage parking).
- Living
- Patio
- En-suite Bedrooms (x4)
- Kitchen
- Additional spaces: Pajama lounge, Scullery, laundry, Pantry, Study, Wine cellar
- Additional accommodation: guest flatlet, Staff room
- Garages (x3)

01. THE CONCEPT | Modern Farmhouse

A modern farmhouse|barnhouse, with seaside influence and a sleek flow of movement throughout the space. Focus on the views, architecturally positioned for both optimal view intake and privacy. An indoor-outdoor relationship through the use of glass. Black framing to frame the views, with repeated touches of a farmstyle aesthetic such as shutters, butlers sink, exposed beams, the use of materiality including exposed brick and white subway tiles tied together with natural materials. The winelands enchantment of vinyards and a cellar bring entertainment and appeal. This is a family home of easy living in Knysna.



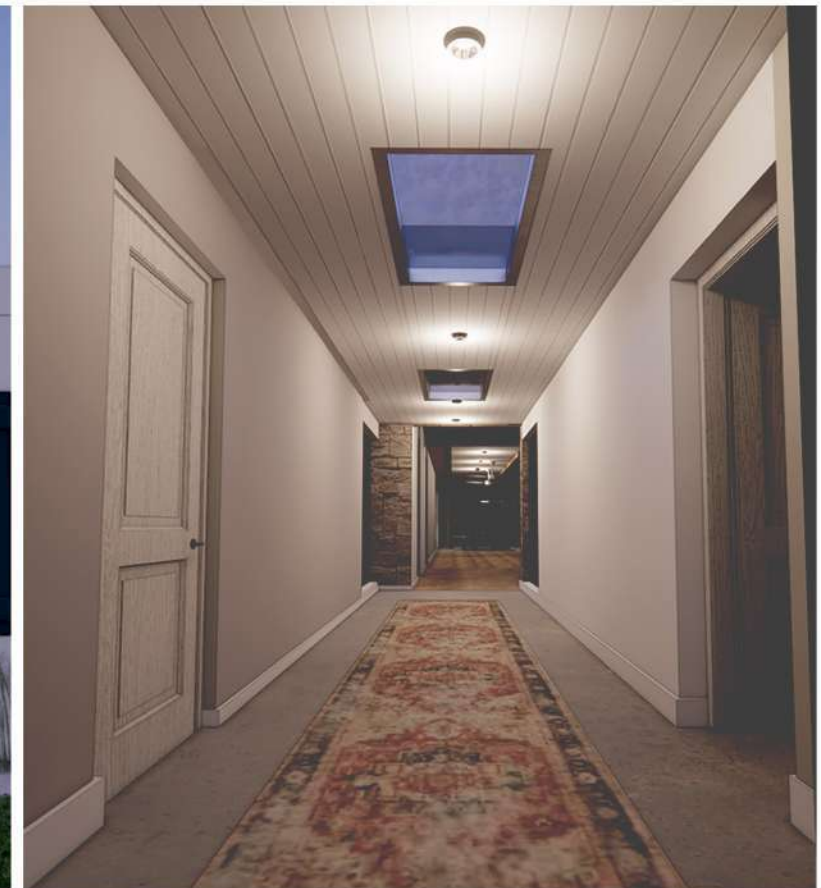
NORTH EAST ELEVATION



FRONT GATE



FRONT DOOR



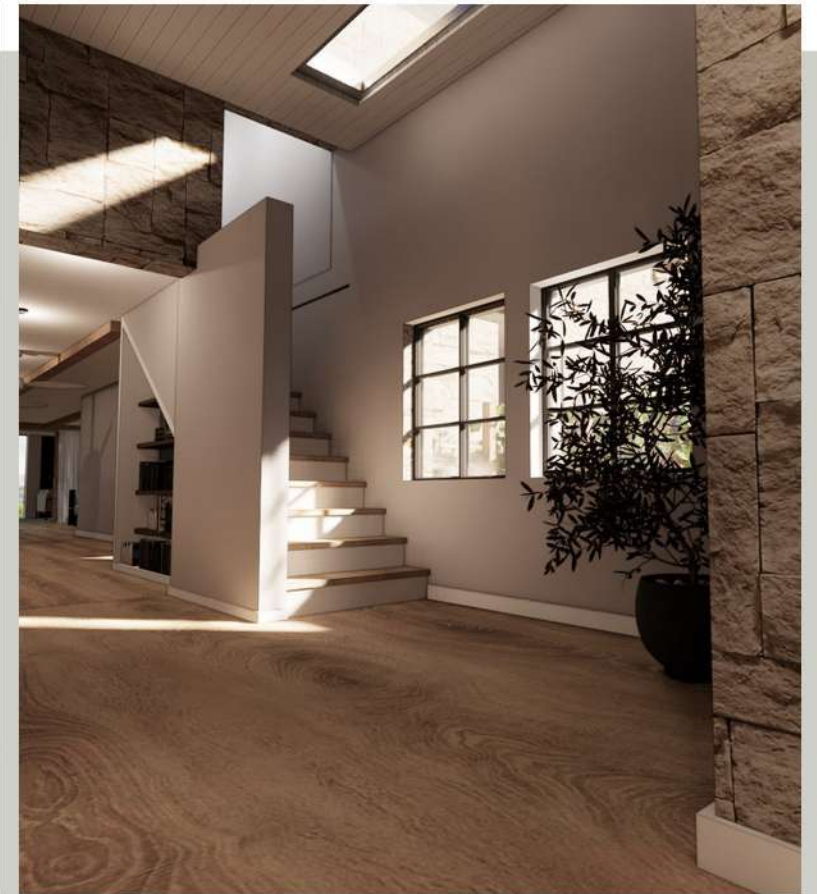
ENTRANCE PASSAGE



PASSAGE WINDOWS



PLANTS THROUGH WINDOWS



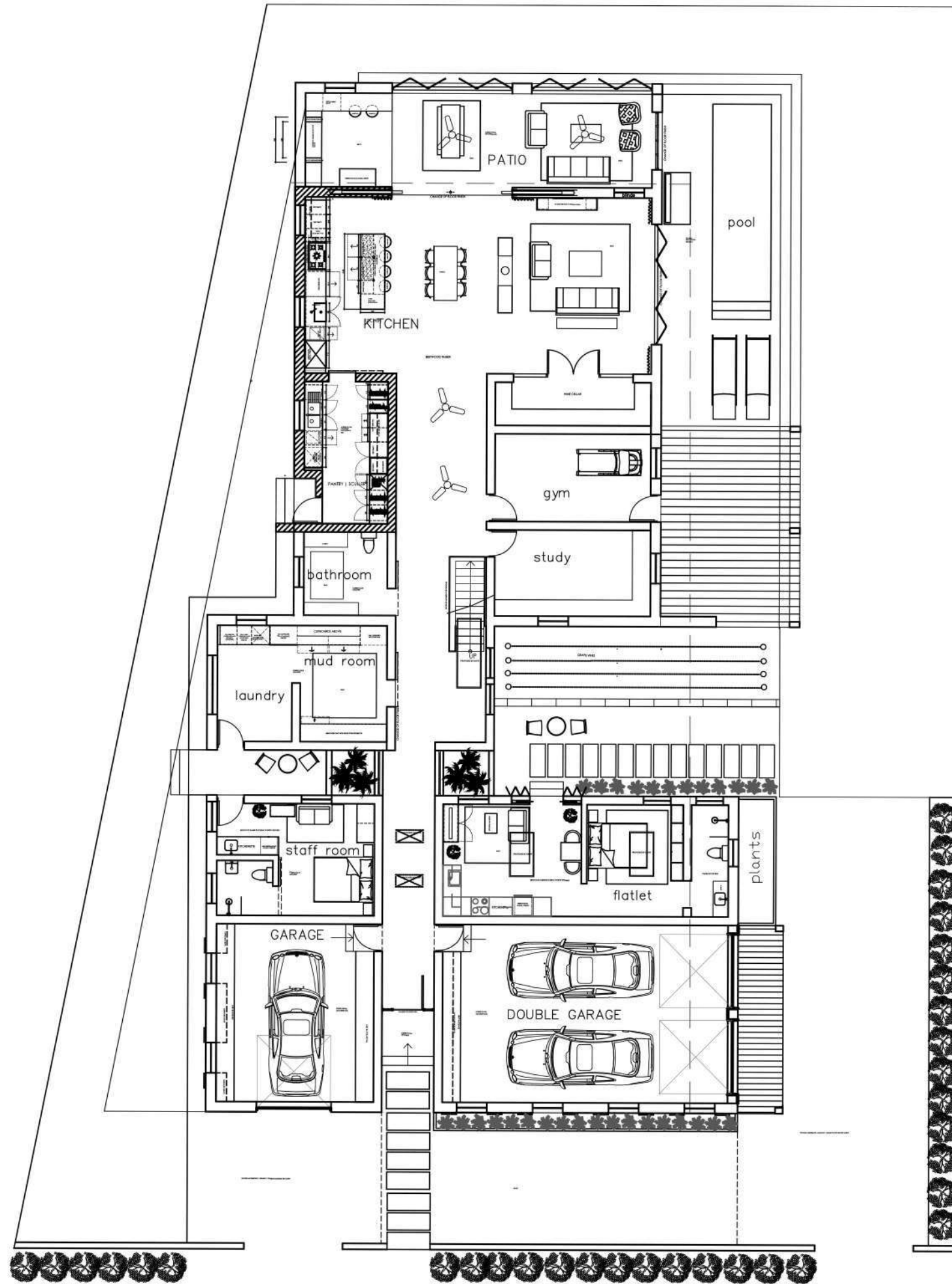
STAIRWAY



NORTH WEST ELEVATIONS



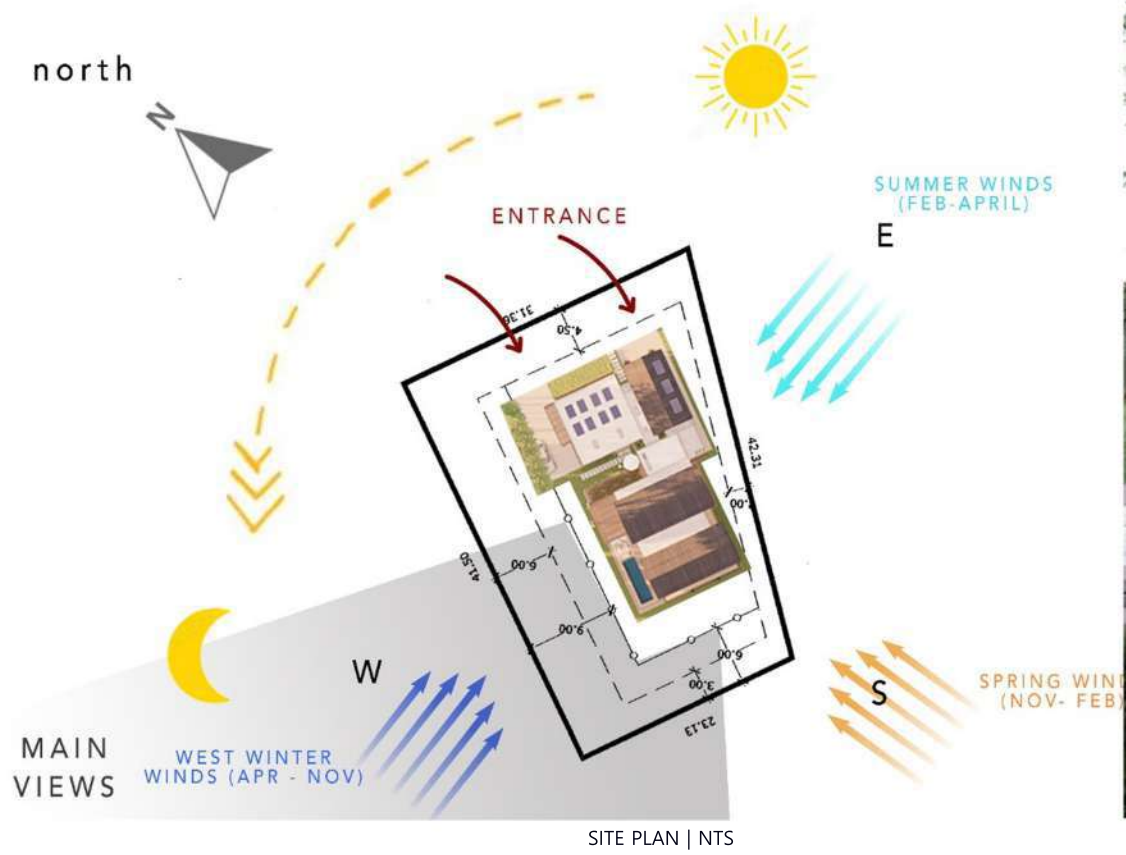
NORTH WEST ELEVATION | POOL FROM LIVING



GROUND FLOOR PLAN | NTS



BUILDING VIEW FROM LAGOON



SOUTH WEST ELEVATION

02. THE BRIEF | BOXED

A space to live. Choose a site in the Cape Town City bowl.

You have the option to position your building between two existing buildings or you can demolish an existing structure

to make space for your building on a specific site. The property is characterized by its elongated and narrow shape, with its entrance located at the shorter end facing the street. Please specify your chosen address on your submission.

the client, YOU live alone / with family / friends / a partner ... you write the script of this story. The structure

- The internal dimensions of the rectangular space are 4500 mm x 11000 mm. The space consists of a ground floor, first floor, second floor, and a rooftop garden.

- Depending on the chosen site, the building can be connected to another building on both sides or at least on one side.

Access to the building is only available from the front, but you have the option to include a small courtyard space at the back. For further details regarding wall thickness and site specifics, please refer to the CAD drawings.

- You have been provided with basic drawings, and it is essential to use the given proportions while designing your space.

However, you are free to manipulate, rework, or completely redesign the structure to match the interior style, as long as you remain within the given parameters. Additionally, you are allowed to create openings in the building to incorporate windows, balconies, skylights, and doors

02. THE CONCEPT | BOXED

'Bohemian style interior design began in the 19th century in Paris, France. It was inspired by artists, writers, performers, and nomads who believed creativity was more valuable than money' — the original bohemians. With the convergence of their respective cultures, ideals, and refusal to conform to what was accepted, they inadvertently started an interior design trend. The bohemian style, named for those nomadic artists, intended to

ing the unconventional'





ENTRANCE



SECTIONAL ELEVATION

ground floor - entrance | studio space | garden | music
 first floor - sun room | kitchen | laundry room |
 second floor - bedroom with ensuite and balcony
 rooftop - pool | outdoor lounging | yoga | eating



LOCATION : 156 KLOOF STREET, GARDENS, CAPE TOWN



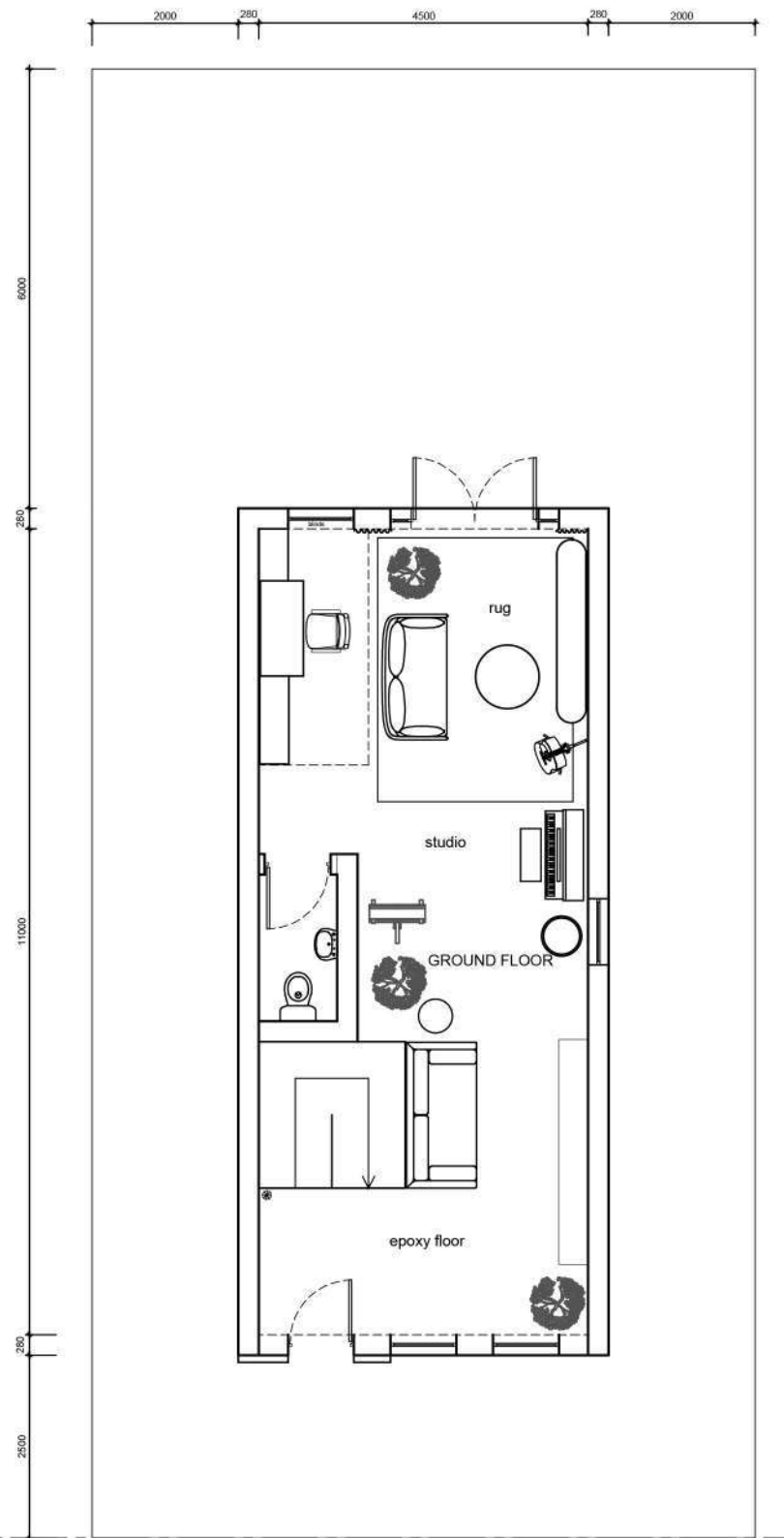
CURRENT LOCATION PHOTOGRAHED



welcomed by staircase



studio |work space



LINE OF THE ROAD

GROUND FLOOR

SCALE 1:100



sunroom



dine | lounge



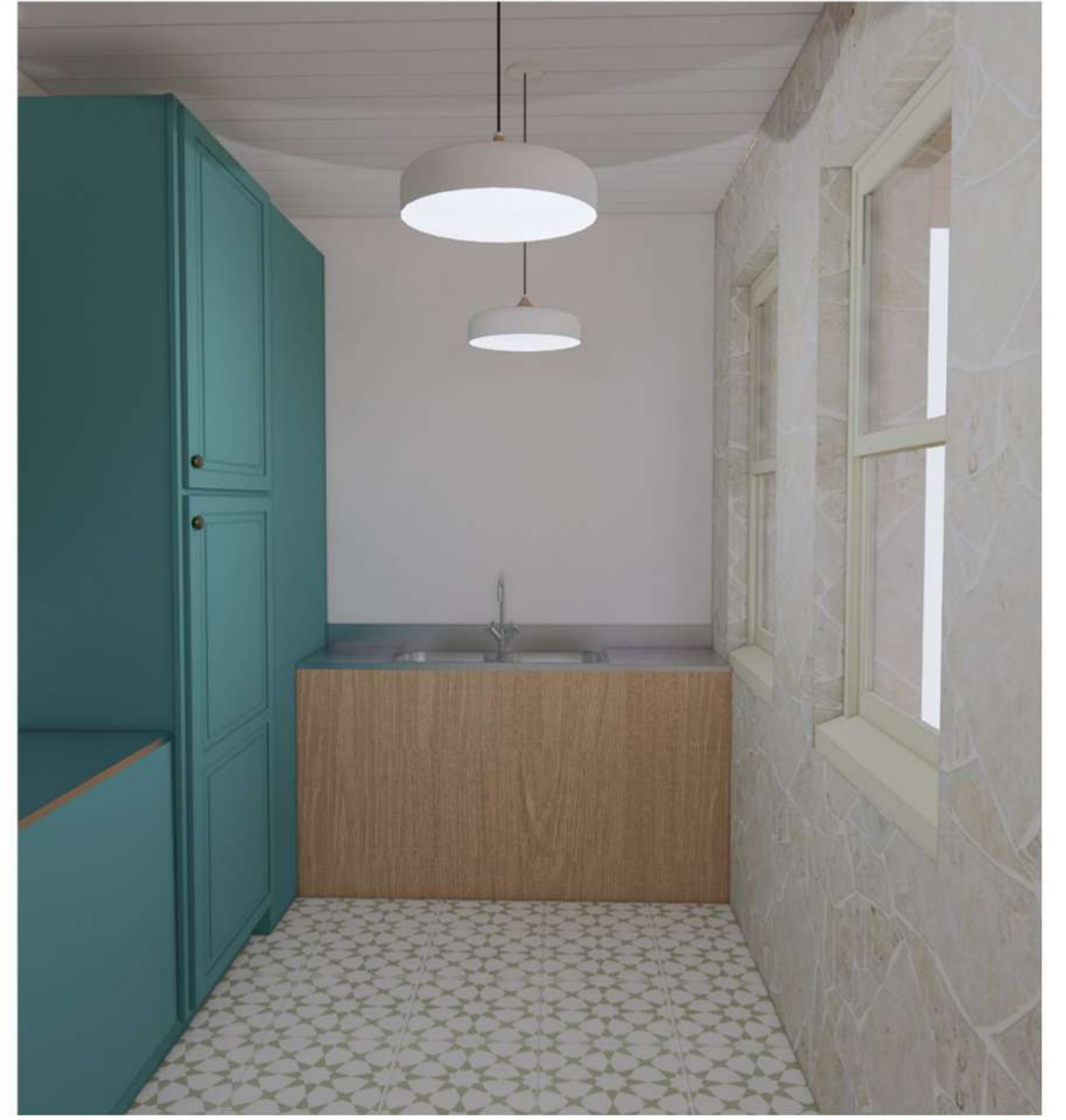
kitchen to sunroom



sunroom to kitchen



kitchen



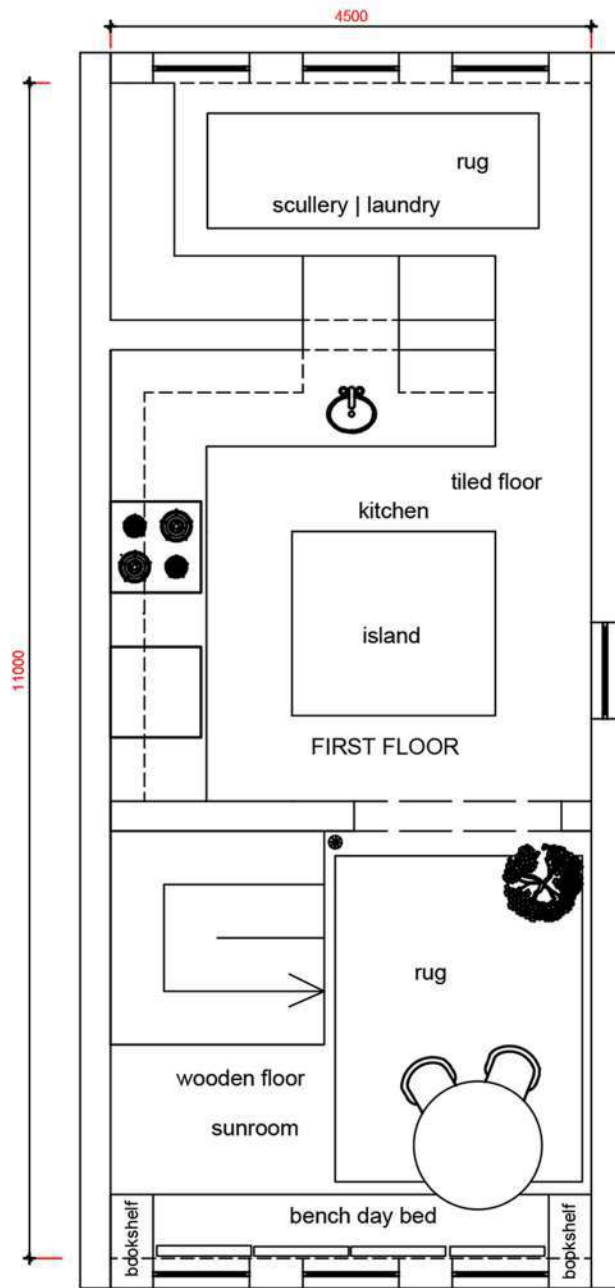
laundry | scullery



bath

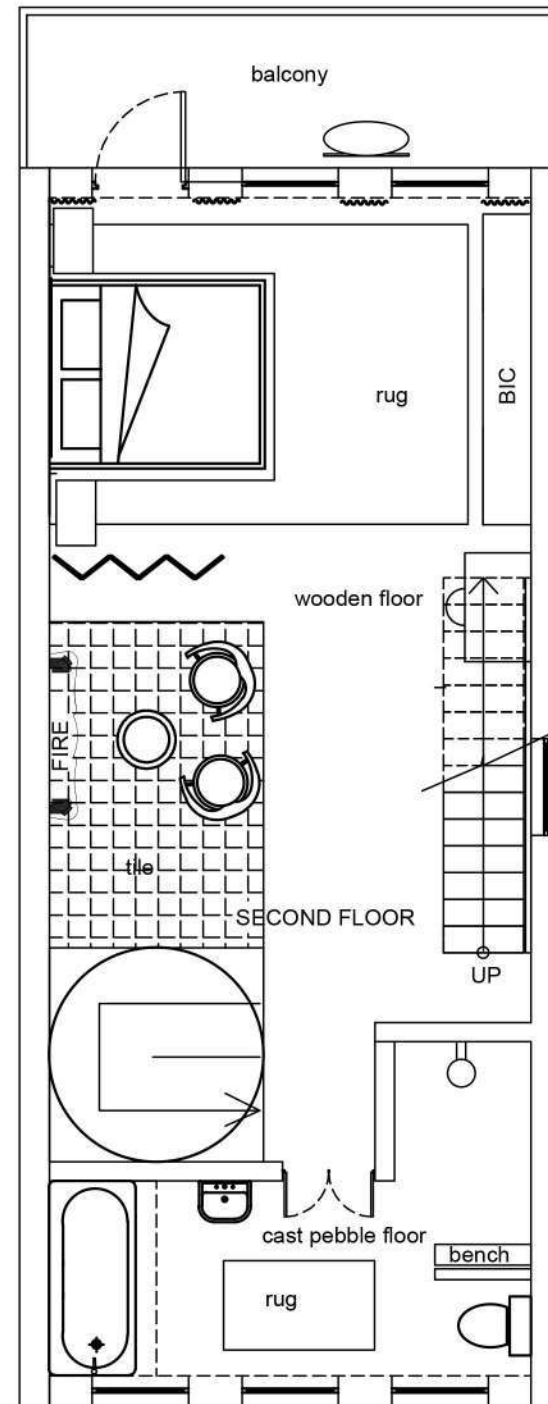


ensuite



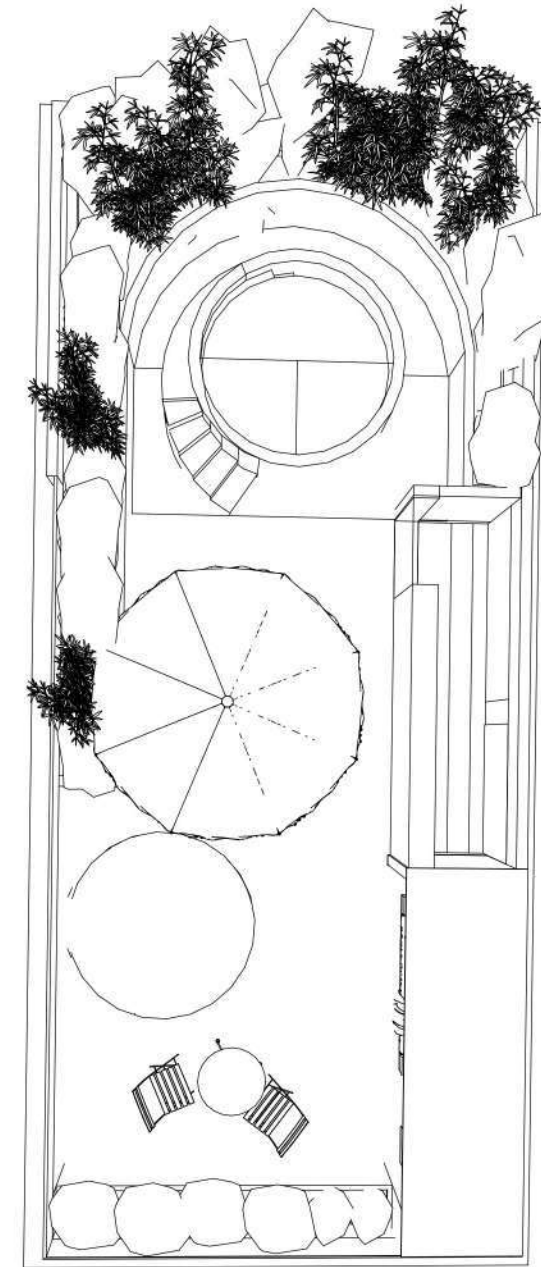
FIRST FLOOR

SCALE 1:100



SECOND FLOOR

SCALE 1:100



THIRD FLOOR

SCALE 1:100



Bedroom



balcony



rooftop



rooftop pool



rooftop sun



section of boxed



concrete jungle vibe



greenery



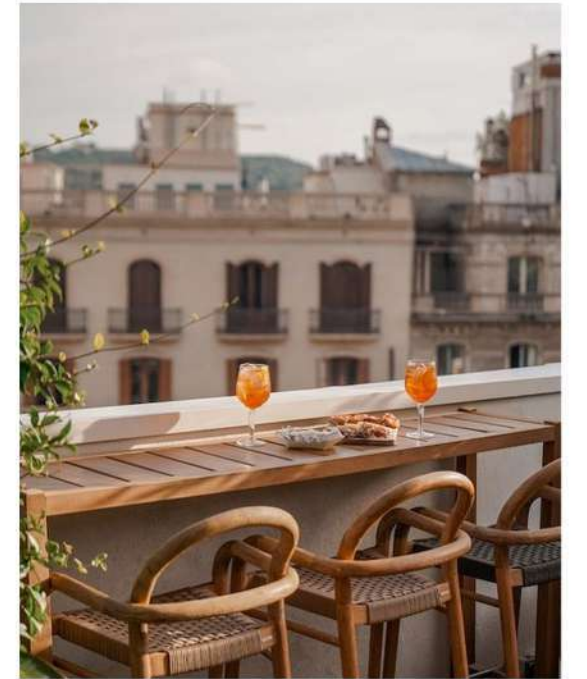
gallery



yoga



recording studio








rooftop bar

03. THE BRIEF | BOXWOOD

Run a competition with Design Time students whereby they put together a design scope for the city block fronting Strand, Loop, and Bree Street. Think residential conversion, new offices, campus, hotel, hostel etc – the world is your oyster.

NEDBANK

 Gross lettable area (GLA) 7,387m²	
 Floorplate 516m²	
 Retail Area 603m²	
 Offices Area 6,784m²	

03. THE CONCEPT | HARLEQUIN

Thinking about the greater CBD and what it and it's people need, I land on greenery , art and music. The facade carries greenery through to the city centre with creepers on concrete and the star of the show Leucadendron Harlequin. Therefore I would call this city block, Harlequin. I look to the old Nedbank building in creating an artistic haven and residency for all. Entering the building to a gallery on ground floor, which can open for first Thursdays, exhibiting local artists, along with a reception desk, casual seating and coffee. Floors 1 to 9 are left for parking and apartments, the 10th floor a yoga studio that is well sound proofed as floor 11 is my conceptual floor being a recording studio. The rooftop is based off of the element of Fire! Hence the warmer tones running through.





ENTRANCE | GALLERY



HARLEQUIN PLANTERS



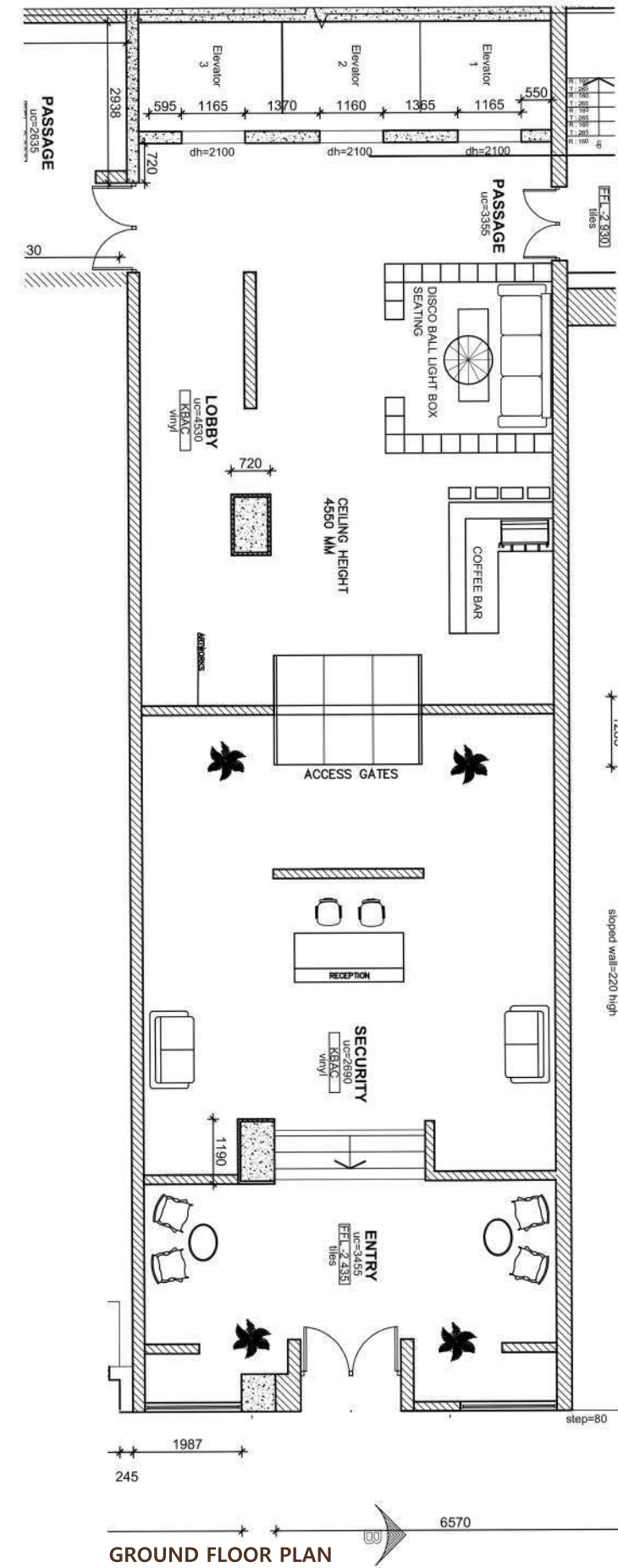
FACADE



RECEPTION



LIFT | LOBBY | COFFEE | LOUNGE





RECORDING STUDIO



ROOFTOP EATING AND ENTERTAINMENT



ROOFTOP COOKING WITH FIRE | CONCERT



04. THE BRIEF | PG BISON

Design your clients dream desert oasis consisting of a luxury residence, with entertainment areas and landscaping. Your design Proposal must celebrate the basic humans needs of: Eating, Sleeping, Bathing, Socialising. Using the four elements: Fire, Water, Earth,Air

04. THE CONCEPT | CIRCLE OF LIGHT

Step into the immersive oasis of Circle of Light, where the desert sun guides your journey through nature's elements. Circular designs reminiscent of atoms and celestial spheres enhance the ambiance. Let the sun speak to your photography passion. The blend of earthy tones and stone architecture emanates the essence of the land. Embrace the flickering flames at Desert Rose Pizzeria, igniting your senses, or find solace in the tea garden. Ascend to the fire floor, surrounded by gentle fires and starry skies for inspiring stargazing. Luxurious sleeping domes and a portal pool invite you along lit walkways. Enliven your spirit in the groovy entertainment area, indulging in the joy of letting go. Surrender to the allure of Circle of Light, a space-age escape that enchants and fuels your imagination



AXO OF SITE SET UP



AXO OF SLEEPING DOMES



ENTRANCE



UPSTAIRS AND BAR



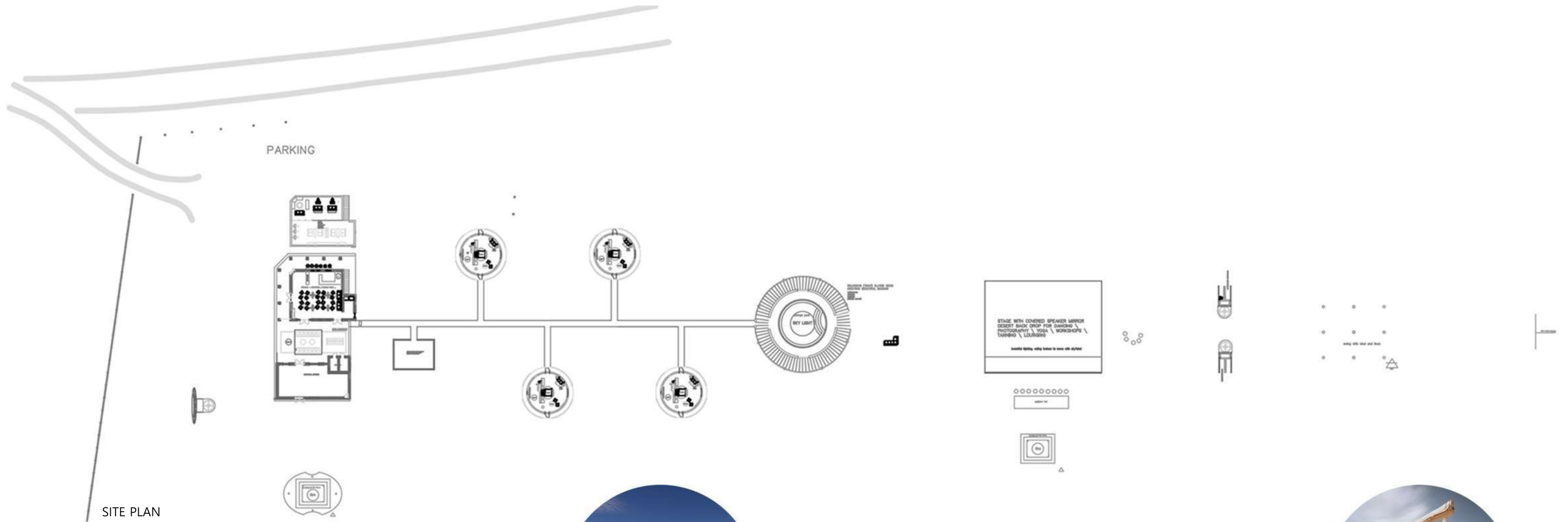
STARGAZING, FIRE, ART, BAR



DESERT ROSE PIZZARIA



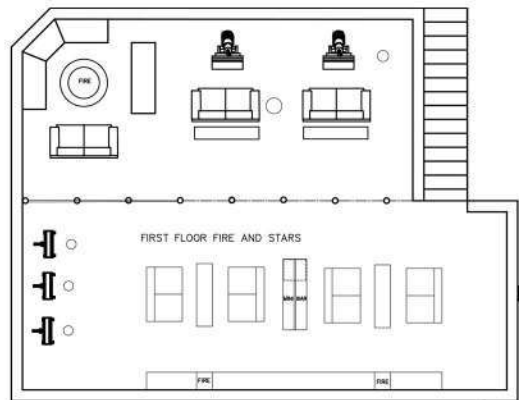
DESERT ROSE BREW GARDEN



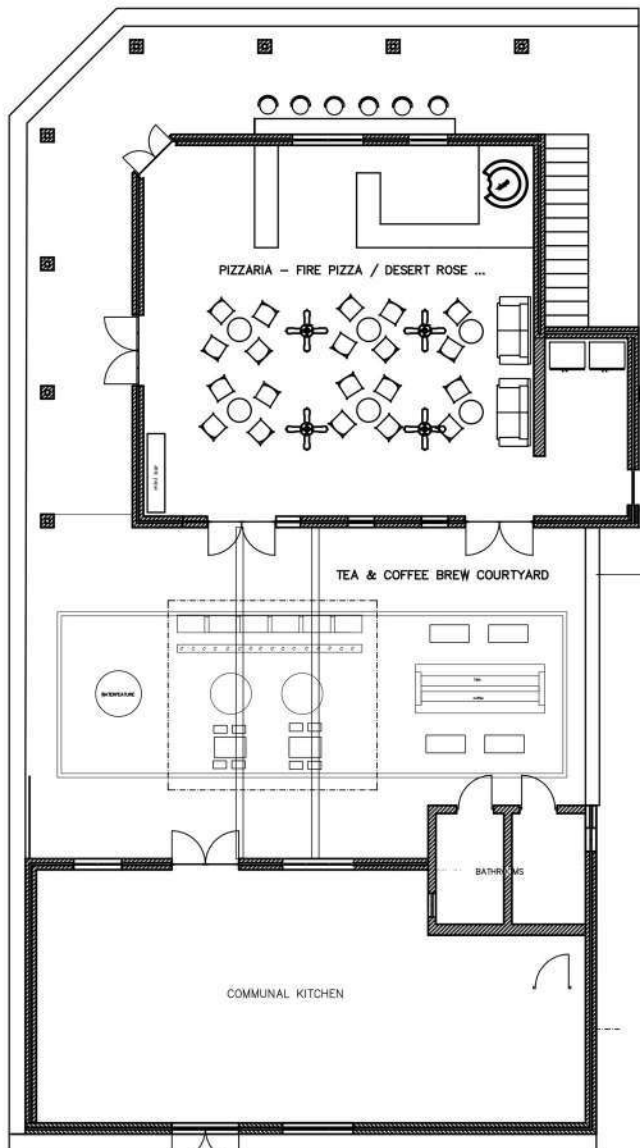
LUXURY SLEEPING DOMES



CONNECT WITH THE ELEMENTS

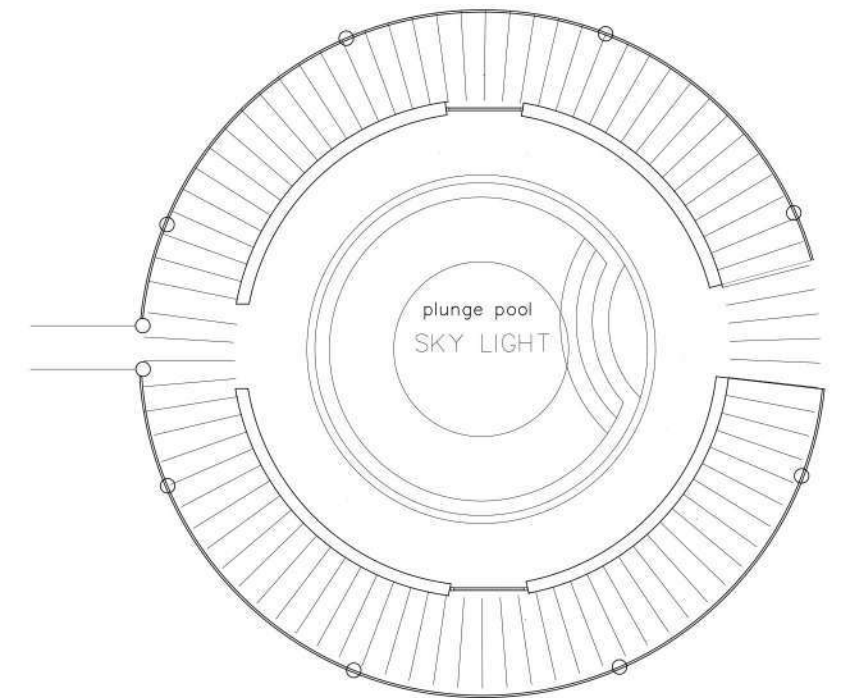
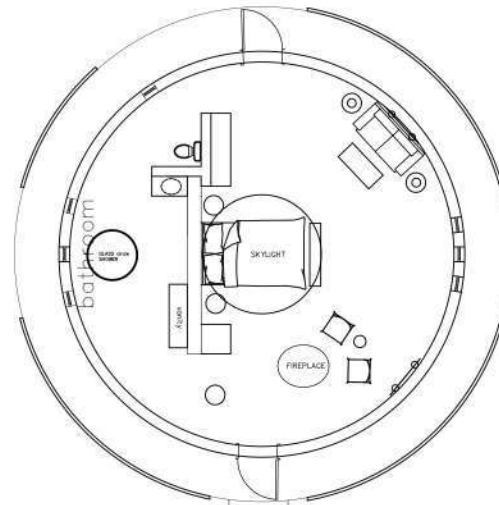


FIRST FLOOR CIRCLE OF LIGHT HUB



GROUND FLOOR CIRCLE OF LIGHT HUB

LUXURY BEDROOM



PORTAL POOL



ENTERING BEDROOM



ENSUITE



BEDROOM



PORTAL POOL SCENES



OUTDOOR LOUNGE AND FIREPLACE



OUTDOOR STAGE

06. THE BRIEF | Stay Unique

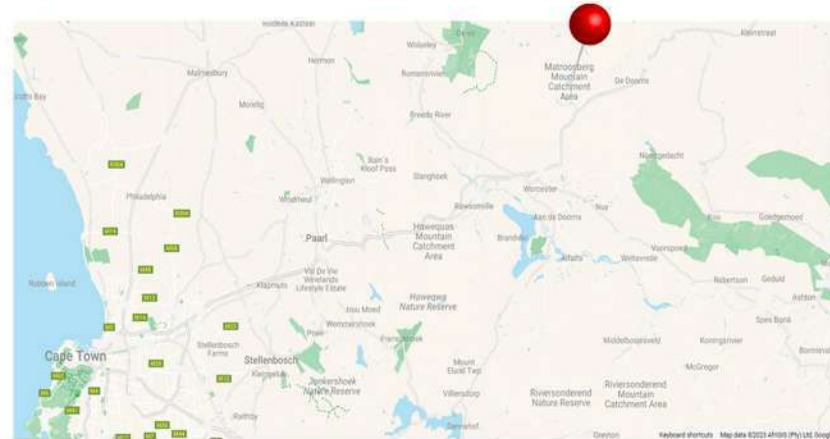
Design Time students have been given an exciting opportunity to create unique and innovative cabin designs for Stay Unique. The company plans to build up to six cabins in 2023, each situated in distinct and picturesque locations within a 2.5-hour radius of Cape Town in the Western Cape. As the company looks to expand into other provinces beyond the Western Cape in 2024, they are seeking inspiration for its next four cabins. Stay Unique is currently building two cabins and eagerly anticipates the innovative designs that the Design Time group or groups can offer. Moreover, the selected designs will not only be built, but the students will also have the chance to experience the finished product when it is ready for guests. Stay Unique will provide professional photography of the cabins inspired by the students, along with content from notable influencers in eco, adventure, and travel categories. This content can be used by the students in their portfolios, which will be advantageous for their future careers. This opportunity is an excellent chance for Design Time students to showcase their creativity and gain valuable exposure in the industry.

06. THE CONCEPT | STAY UNIQUE

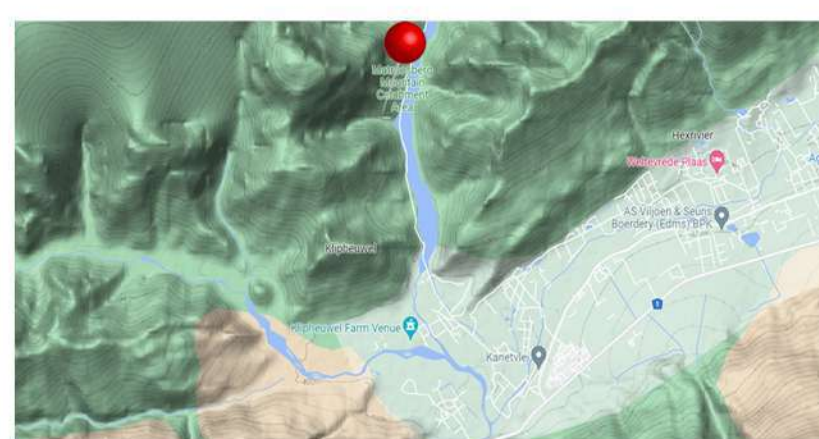
Our eco-friendly cabin is unique in its approach to integrating nature into the guest experience. Our design concept highlights the five elements: water, fire, earth, air and spirit using these elements as an integral part of the architecture and living experience. Water is celebrated through features such as snow, rain, rivers, hot tubs, and rock showers, which create both a visual and experiential connection with guests. Fire is represented by indoor and outdoor fireplaces, remind-

element invites guests to connect with nature by creating stone mosaics, walking barefoot, and soaking in the surrounding raw earth and sunlight. Guests connect with the element of air, enjoying the purity of fresh mountain air and the surrounding natural smells. Sustainability is at the heart of this cabin with an emphasis on renewable resources and innovative technologies. Solar power is used to power the cabin along with rainwater collection systems and septic tanks reducing water usage. Materials such as thermally modified timber and birch lining create a sustainable and whimsical touch. Overall, the eco-cabin creates a unique guest experience by honoring nature, showcasing sustainable design principles, and emphasizing relaxation and harmony.





LOCATION: MATROOSBERG MOUNTAIN CATCHMENT AREA



COORDINATES = 33°28'53.8"S 19°31'29.8"E

STAY UNIQUE

LUXURY IS THE LOCATION



Escape and connect in the Mountains of Matroosberg, located just two and a half hours from Cape Town.



INTERIOR



BATHROOM AND DECK SCENES



Sustainability and materiality are at the forefront of modern design, and the rush towards eco-friendly solutions is more important than ever before. By utilizing renewable resources and innovative technology, we can create spaces that are both durable and beautiful. Here are some examples of how we can achieve this: Solar power is a fantastic way to harness natural energy. By

businesses without relying on traditional energy sources. Septic tanks and rainwater collection systems allow us to conserve water. With careful management, we can ensure that this precious resource is used efficiently. When it comes to materials, thermally modified timber is an excellent choice for flooring and cladding. It's durable, resistant to rot and insects, and has a beautiful natural finish. For a touch of whimsy, consider adding a woven reed nest to your design. It not only looks great but also provides a place for animals to nest. Birch lining is a perfect choice for interior walls and ceilings. It's lightweight, has a pleasant texture, and can be stained or painted to match your desired aesthetic. Corrugated roofing and thermally modified timber cladding are fantastic options for exteriors. They're both weather-resistant, low-maintenance, and aesthetically pleasing. Max on top solid timber and veneer board cabinetry is an efficient solution that maximizes space while maintaining a clean, modern look. Thermo-treated pine decking is an excellent choice for outdoor spaces. It's resistant to warping, insect damage, and rot, making it ideal for high-use areas. By incorporating these elements into our designs, we can create beautiful, functional spaces that are both sustainable and visually stunning. Let's take advantage of the world around us and create spaces that will last a lifetime.



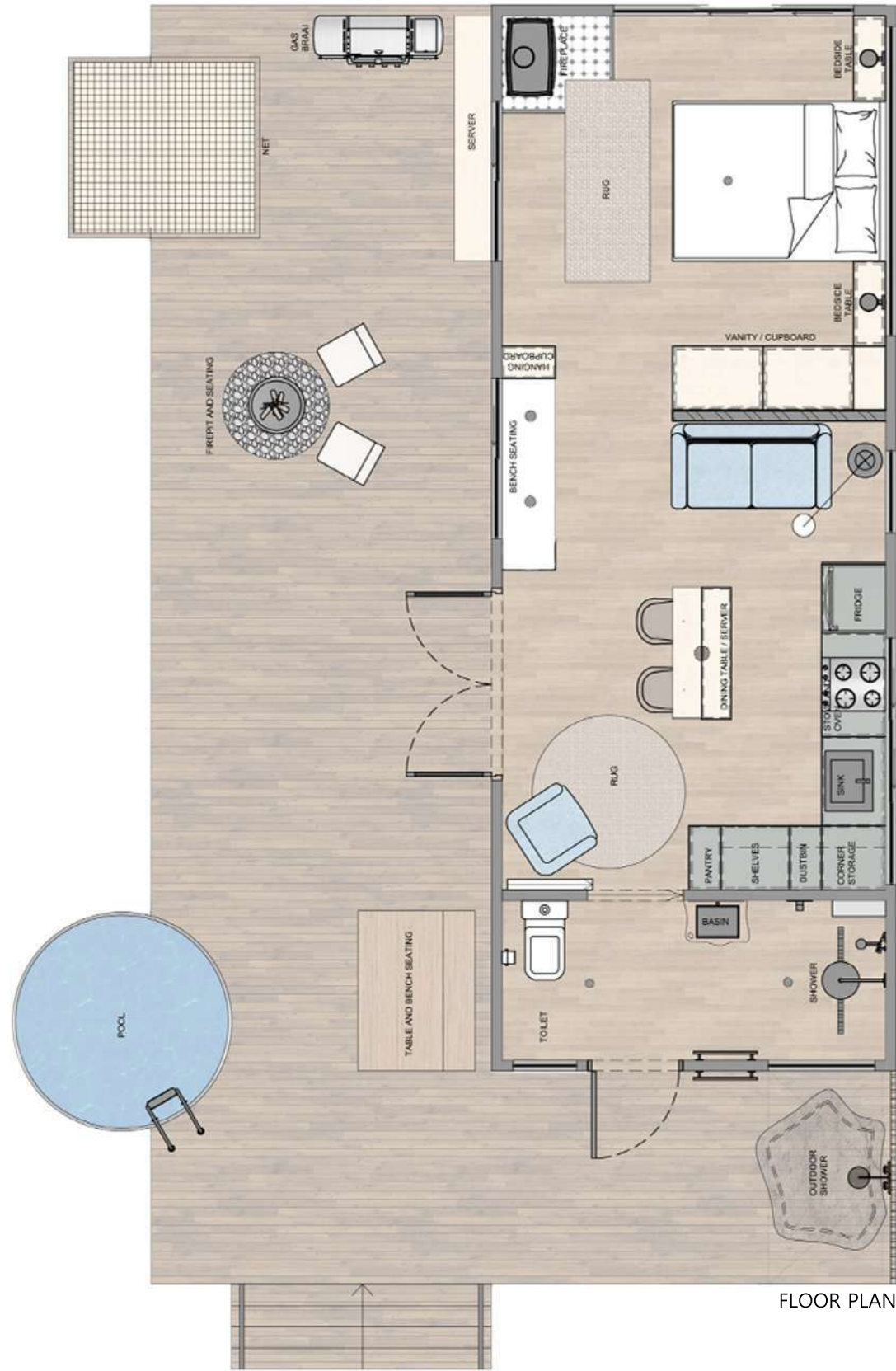
KITCHEN



INDOOR | OUTDOOR LIVING



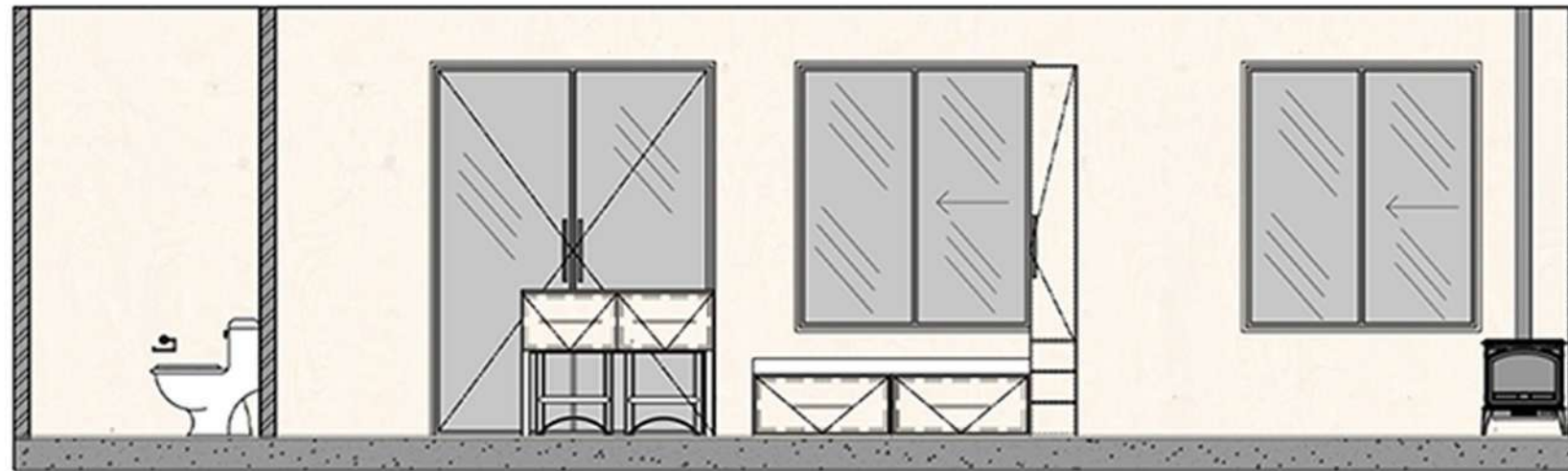
DECK



FLOOR PLAN



STAY UNIQUE ELEVATION A
SCALE 1:50



STAY UNIQUE ELEVATION B
SCALE 1:50



SWEET SLEEP BEDROOM SCENE

materiality





LUXURY IS THE LOCATION



ROMAVERSE

The MetaVerse Roman Jazz Club is a mesmerizing fusion of the ancient Roman era and the timeless allure of jazz music. This virtual realm transcends geographical and temporal boundaries, inviting people from all walks of life to immerse themselves in the enchanting rhythms and melodies that have captivated hearts for generations. Within its digital confines, visitors will find an array of meticulously designed sections, each dedicated to a different facet of jazz.



ENTRANCE



RECEPTION



INDOOR BAR



SEATING



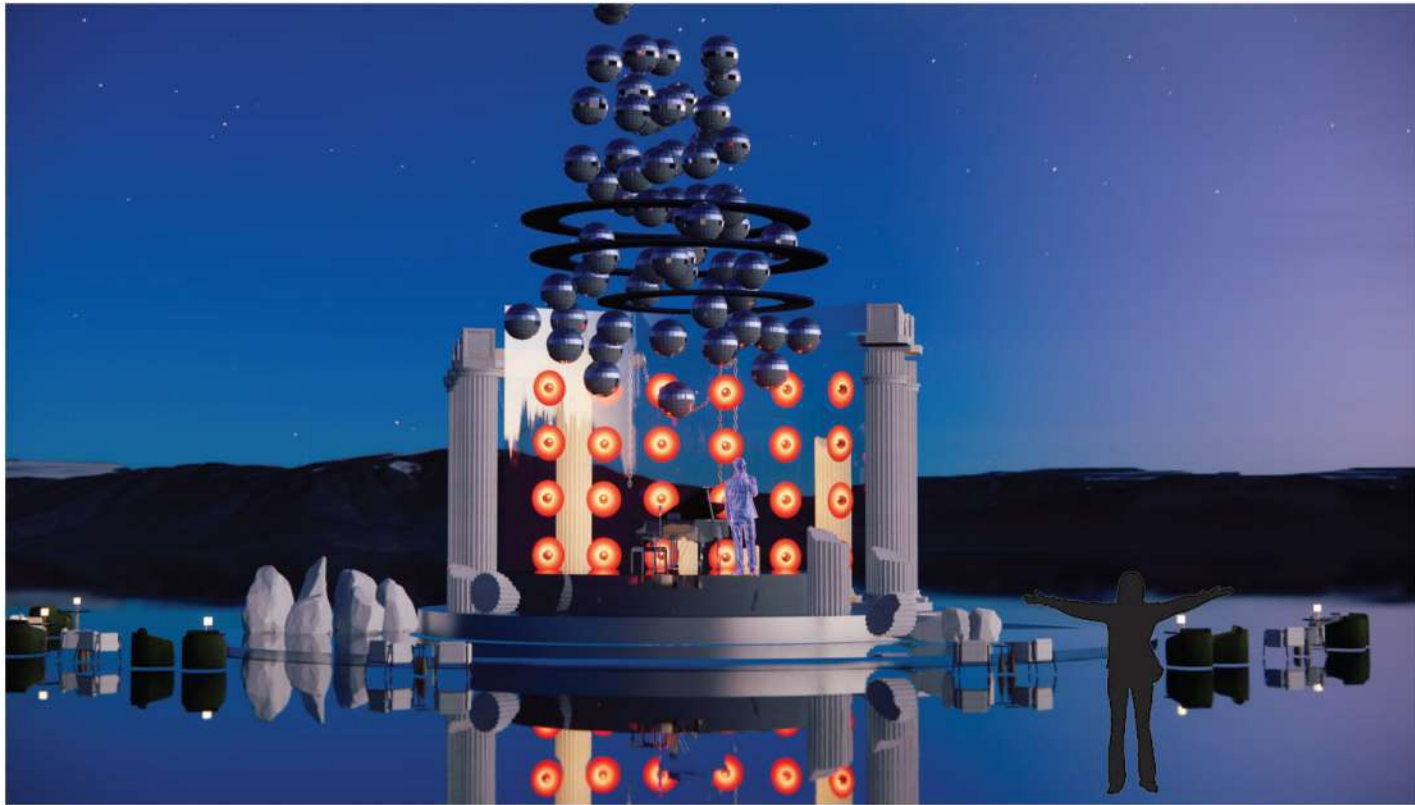
BOOTH SEATING



UNDERGROUND BAR SEATING



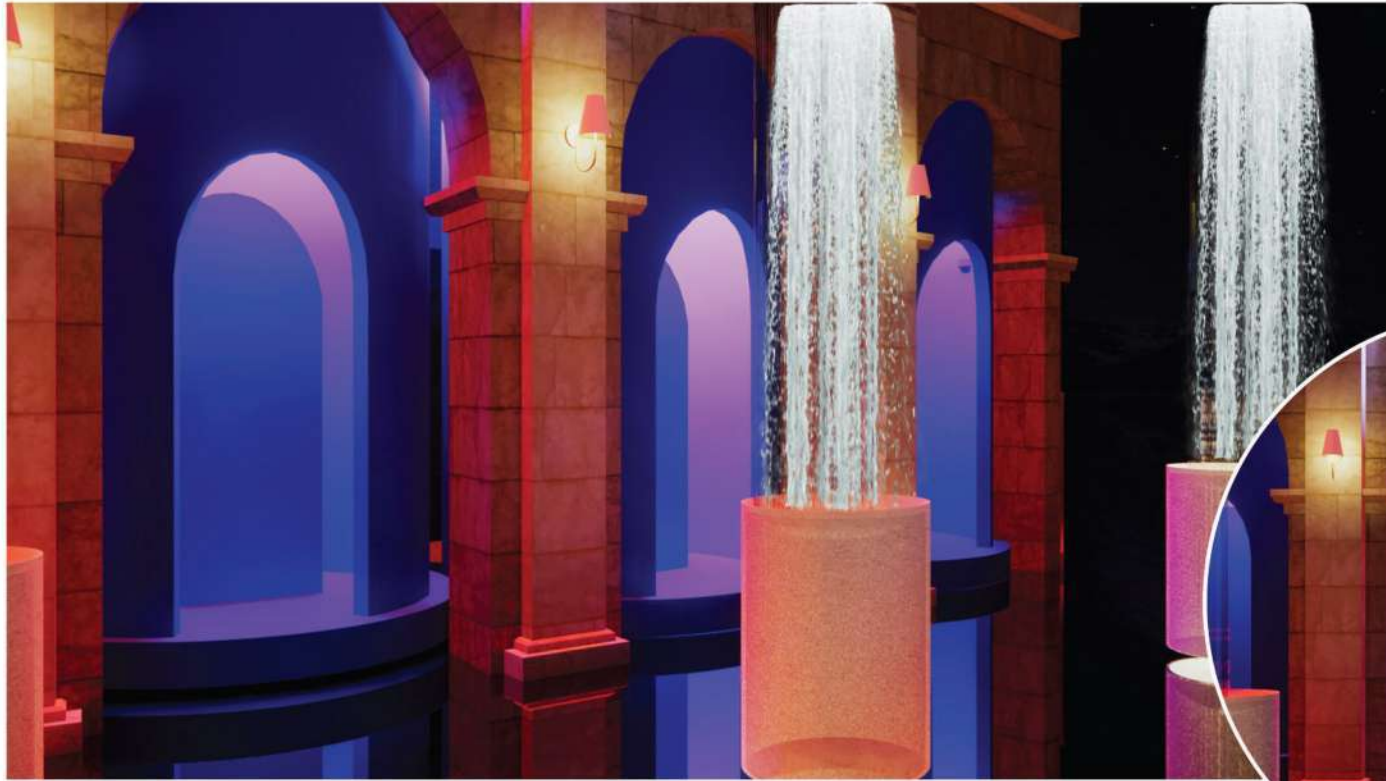
UNDERGROUND BAR



JAZZ STAGE



SILENT DISCO FLOOR

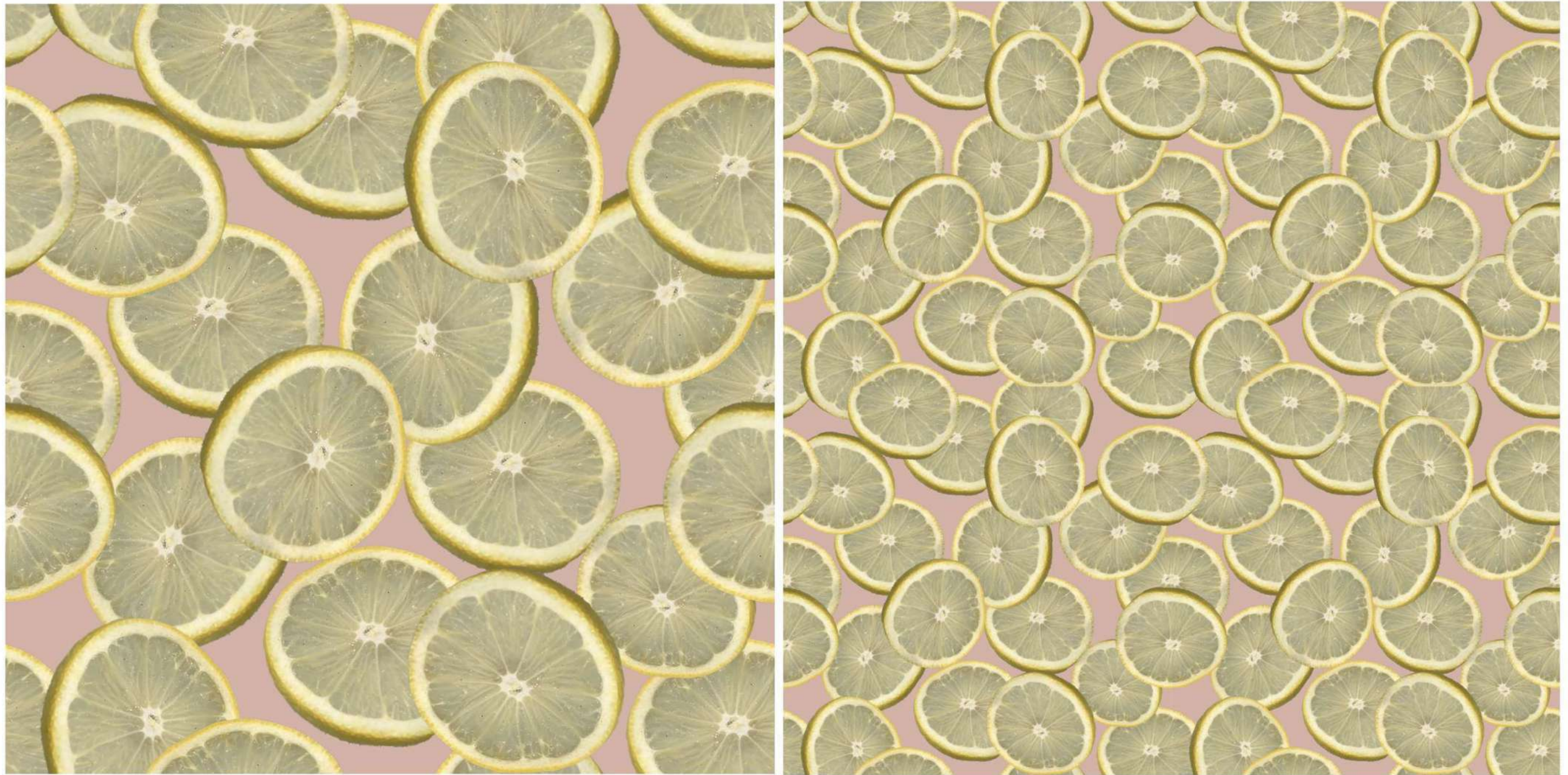


BATHROOM PODS



INDOOR DISCO FLOOR

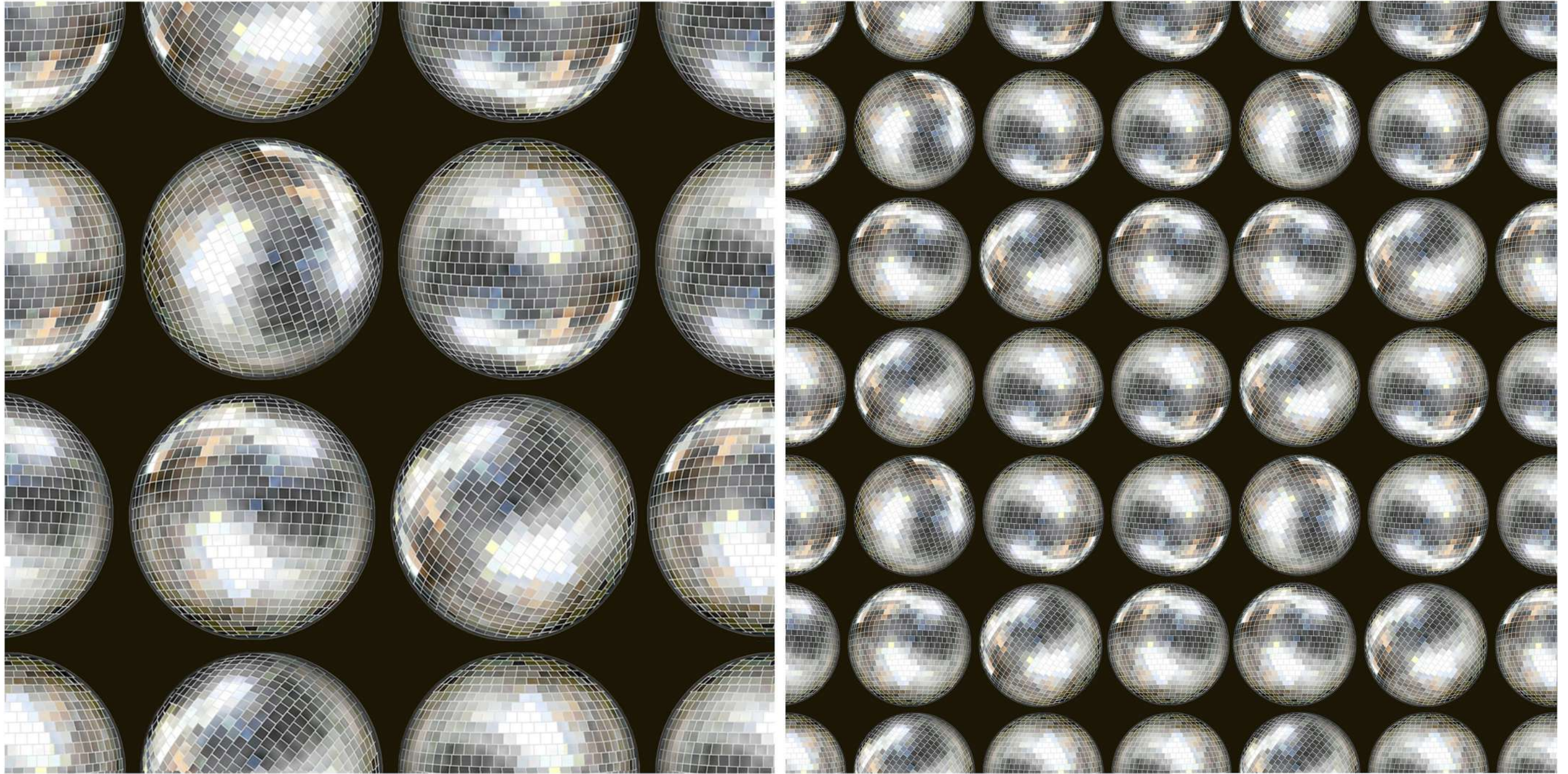
FOR THE LOVE OF TEXTILES



AN EDIBLE SECTION - SAGE CANTER



CAN I CALL YOU ROSE - SAGE CANTER



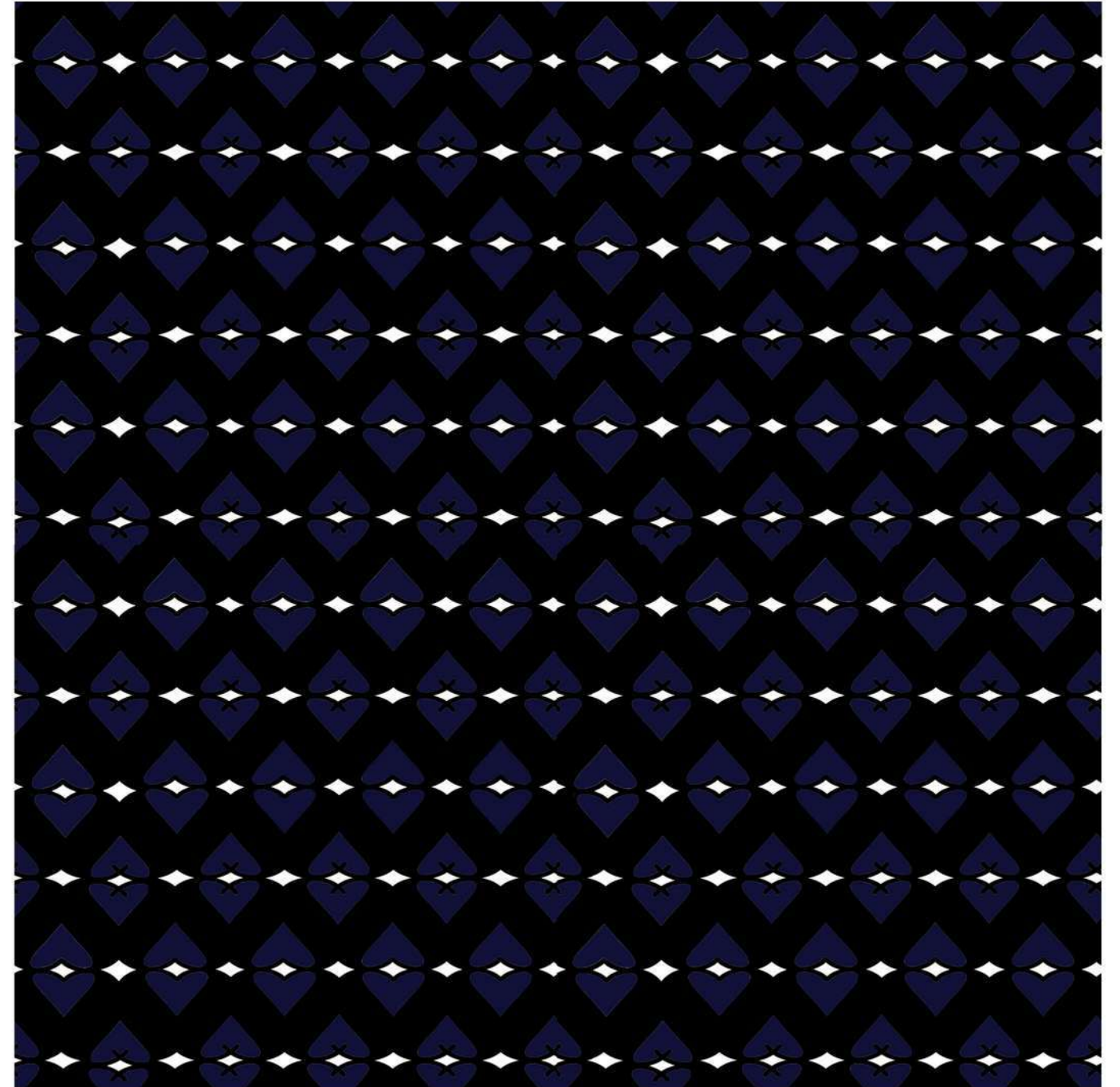
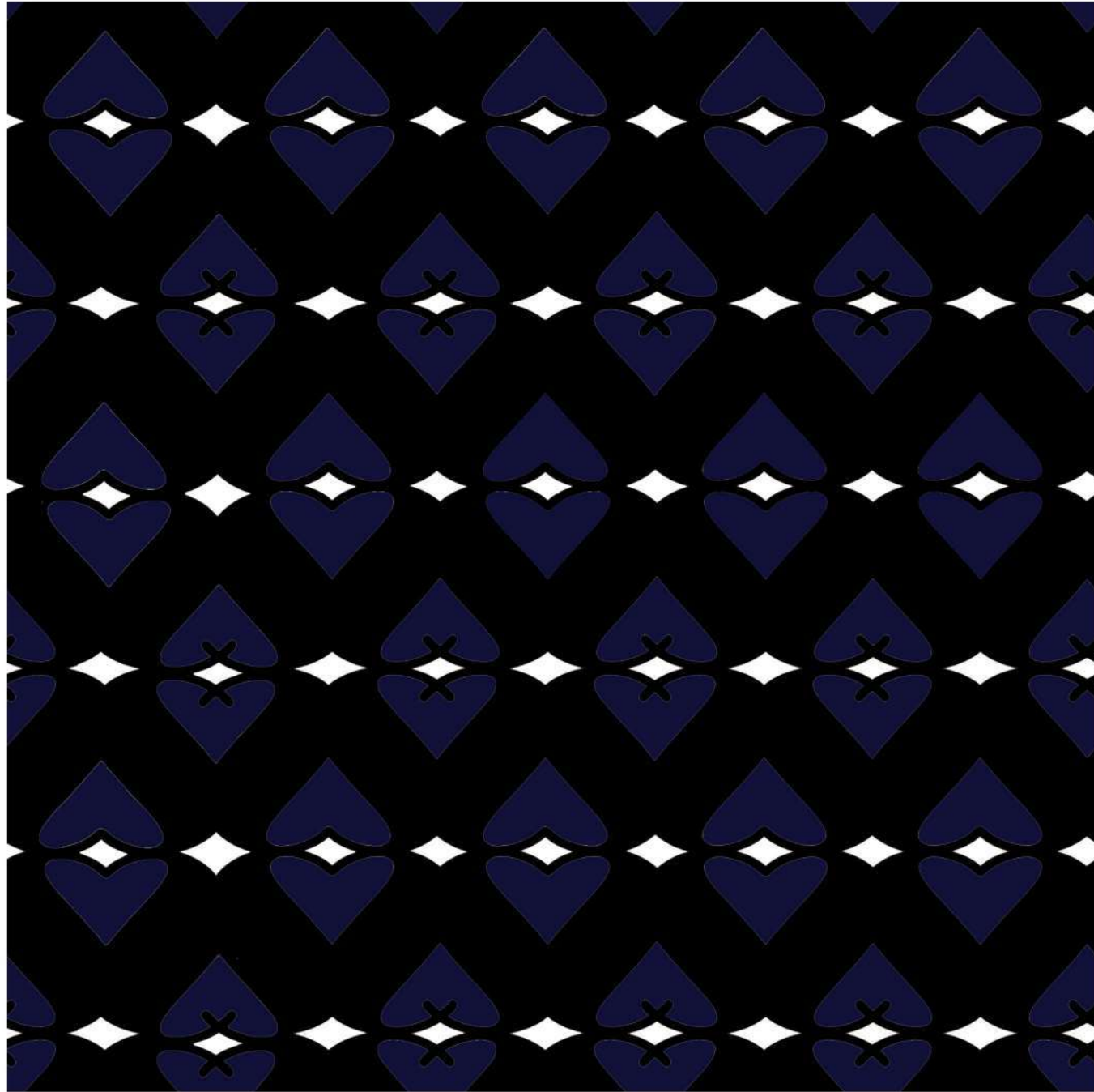
DISCO PLAY - SAGE CANTER



BUTTERFLOWER - SAGE CANTER



PIGEON IN KITCHEN WINDOW - SAGE CANTER



HEARTS ON DIAMONDS - SAGE CANTER

SEE YOU SOON



08. THE BRIEF | ACRYLIC CANDLE|VASE

OBJECT DESIGN 2023 | ACRYLIC VASE OR CANDLE HOLDER

THE CHALLENGE

Candlestick holders and vases are currently ON TREND and can be seen all over social media. There is however a gap in the Design and Décor industry for acrylic candleholders/vases AND décor and design enthusiasts around the country need your designs in order to bring new life to their boring table settings.

Your challenge is to design a candlestick holder / vase with a maximum height of 300mm and a maximum width of 70 mm. NOTE: Your holder can only consist of ACRYLIC / PERSPEX but can be any colour and shape of your choice.



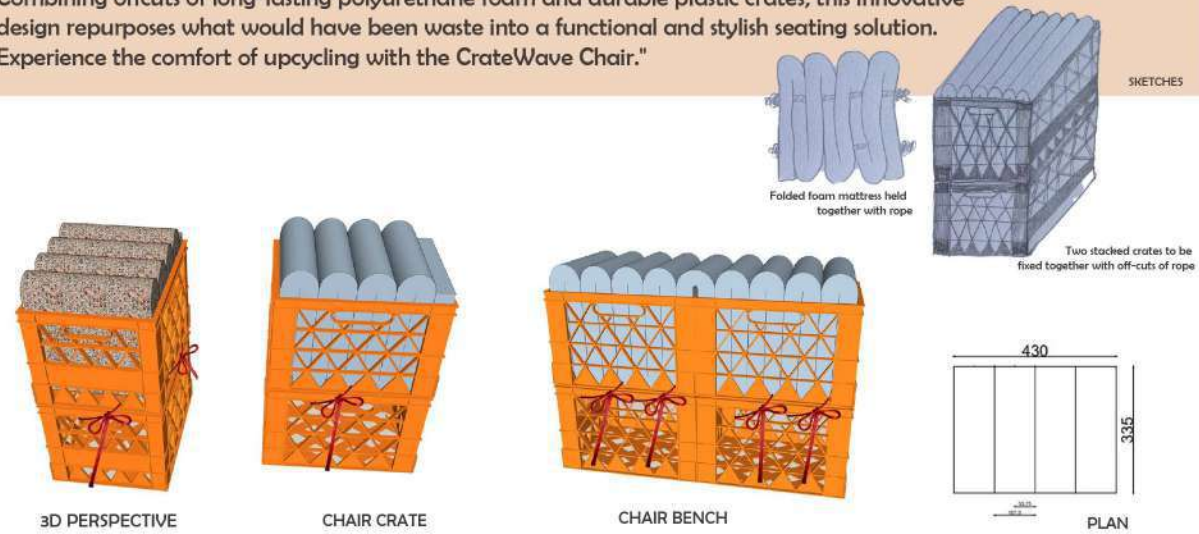
08. THE CONCEPT | INDIGO

The design of the Indigo vase and candle holder represent love and harmony where two different shapes fit perfectly together. the colours are deep and bold, as found from the indigo plant. Made with love to hold flowers and candles of love. .

CRATEWAVE CHAIR

Sustainable Chair Design for Decorex Restaurant Area

"The CrateWave Chair: Sustainable relaxation made possible through recycled materials. Combining offcuts of long-lasting polyurethane foam and durable plastic crates, this innovative design repurposes what would have been waste into a functional and stylish seating solution. Experience the comfort of upcycling with the CrateWave Chair."



SUSTAINABLE MATERIALS

(reduce, reuse, recycle, repurpose, and refuse)

REFERENCE IMAGES



Plastic milk crates that are discarded from supermarkets



Hi-Resilient Foam
High Resilient (HR) Foam is the highest grade of polyurethane foam available. Another given in the Strandfoam arsenal is the High Resilient foam range. The irregular cell structure allows for exceptional load bearing capacities and affords the body the freedom to move with low energy expenditure. This will often form part of the transitional layer for a memory foam mattress making it the perfect companion on higher end products. Strandfoam's Virgin Polyurethane Foam is the ideal choice for any application. We will be using offcuts from Strandfoam as polyurethane is very bad for the environment.



Rope offcuts from Southern ropes



ABOUT | PROCESS

"Be a part of the solution to plastic pollution by relaxing in the CrateWave Chair, which repurposes discarded plastic crates into a functional and stylish seating solution, while reducing waste and supporting sustainability." Comfort from reclaimed HI-resilient foam mattress from Strandfoam create this comforting seat knowing you are bettering the environment. The foam mattress is waved by the hands of Malawian Mike, who is brilliant with his hands. Using offcuts from southern ropes, the mattresses are held together inside wasted plastic crates and reclaimed foam offcuts, the crate chair awaits you.

PROJECTED COSTING

Materials:
Milk Crates - Free from hypermarkets, eg Spar, pick n pay, woolworths
Rope offcuts from Southern ropes - R80
Mattress offcuts from Strandfoam R100
Production:
Mike R60 per hour
TOTAL - R250

I confirm I am able and willing to cover the cost of manufacturing, and agree to the exhibition logistics and rights arrangements as outlined in the design brief

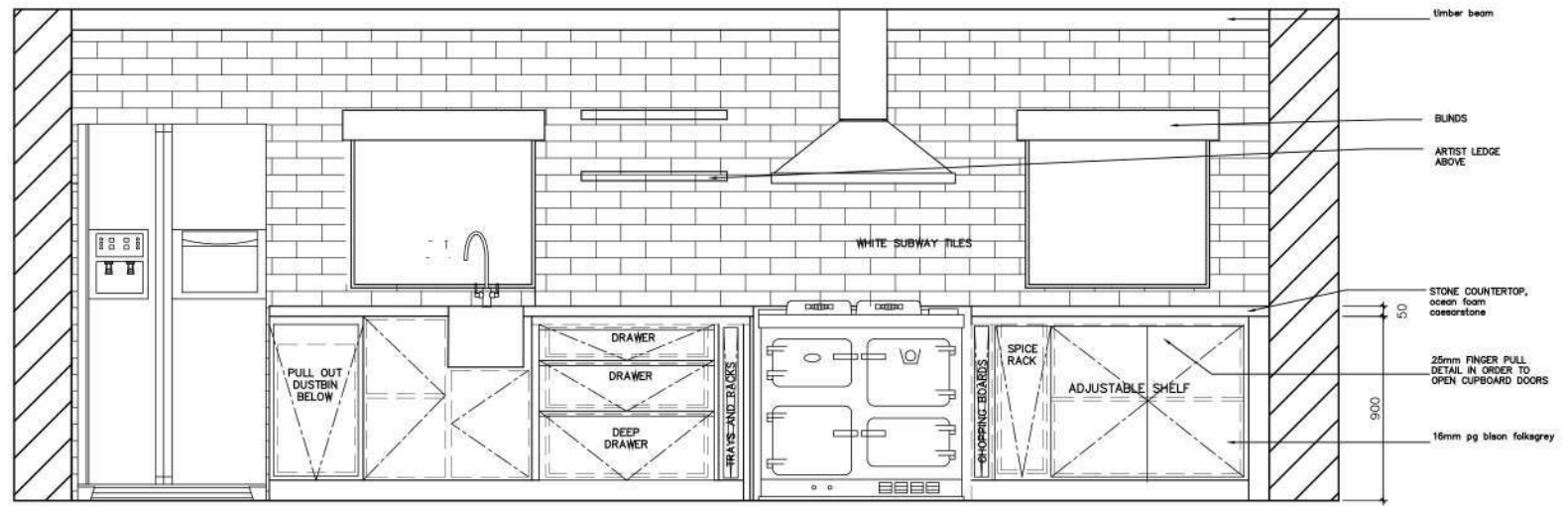
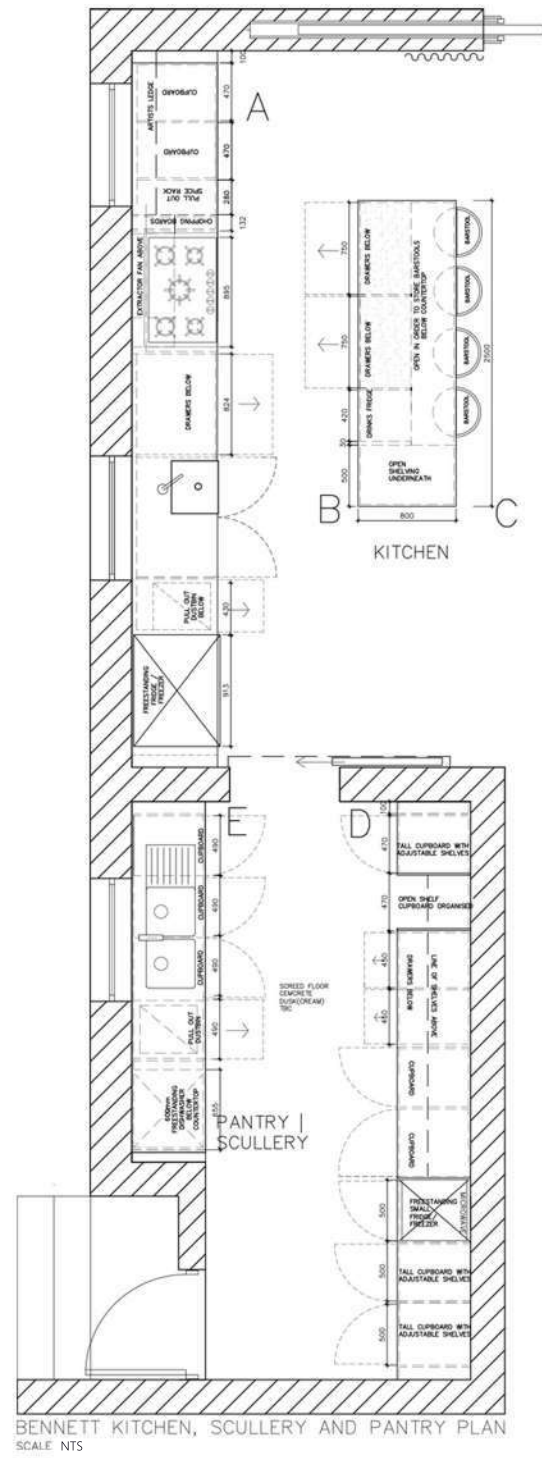
DESIGN USED AT DECOREX 2023



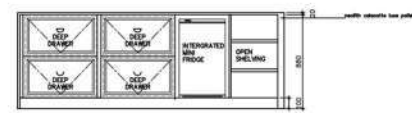
SEE THE SUN WHEN THERES NON LIGHT DESIGN



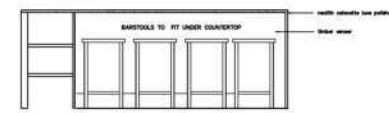
PHOTOGRAPHY - NATURE, HUMANS AND CONCRETE



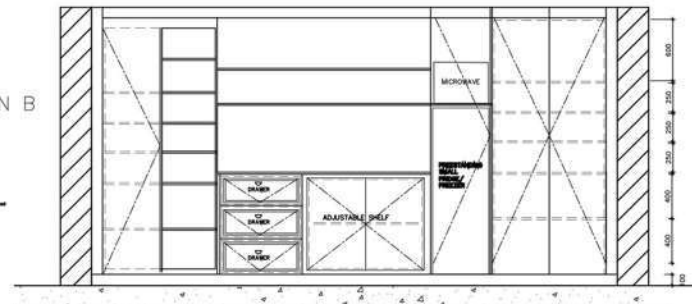
BENNETT MAIN KITCHEN ELEVATION A
SCALE | NTS



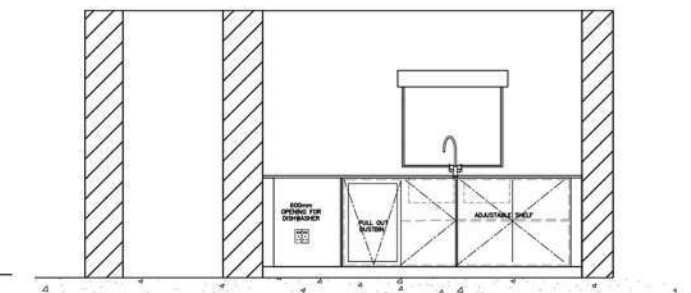
BENNETT KITCHEN ISLAND ELEVATION B
SCALE | NTS



BENNETT SCULLERY ELEVATION C
SCALE | NTS

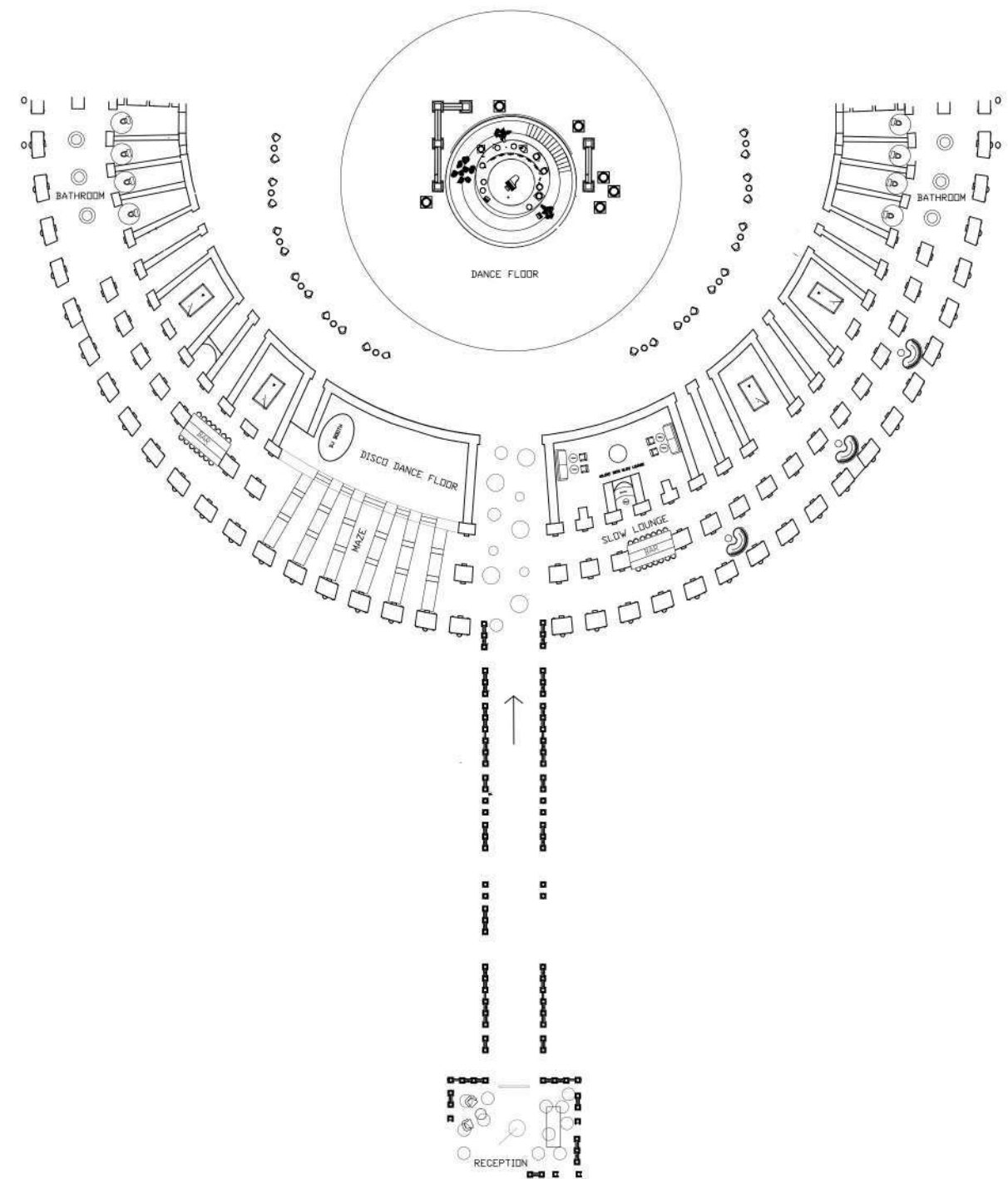
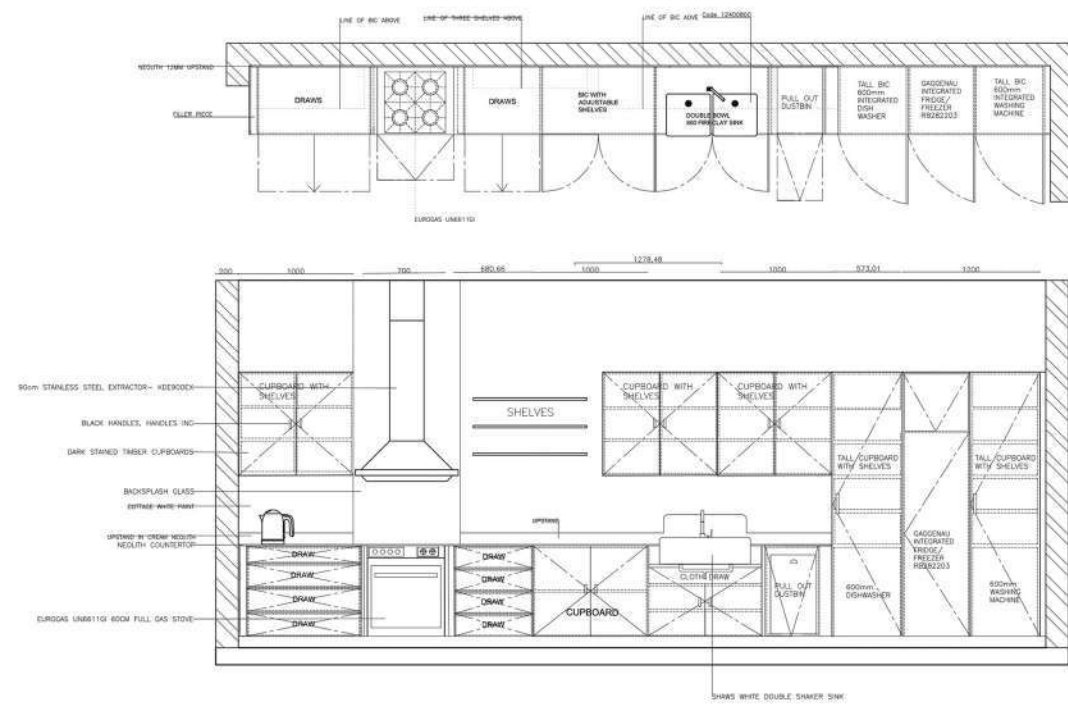


BENNETT PANTRY ELEVATION D
SCALE | NTS



BENNETT SCULLERY ELEVATION E
SCALE | NTS

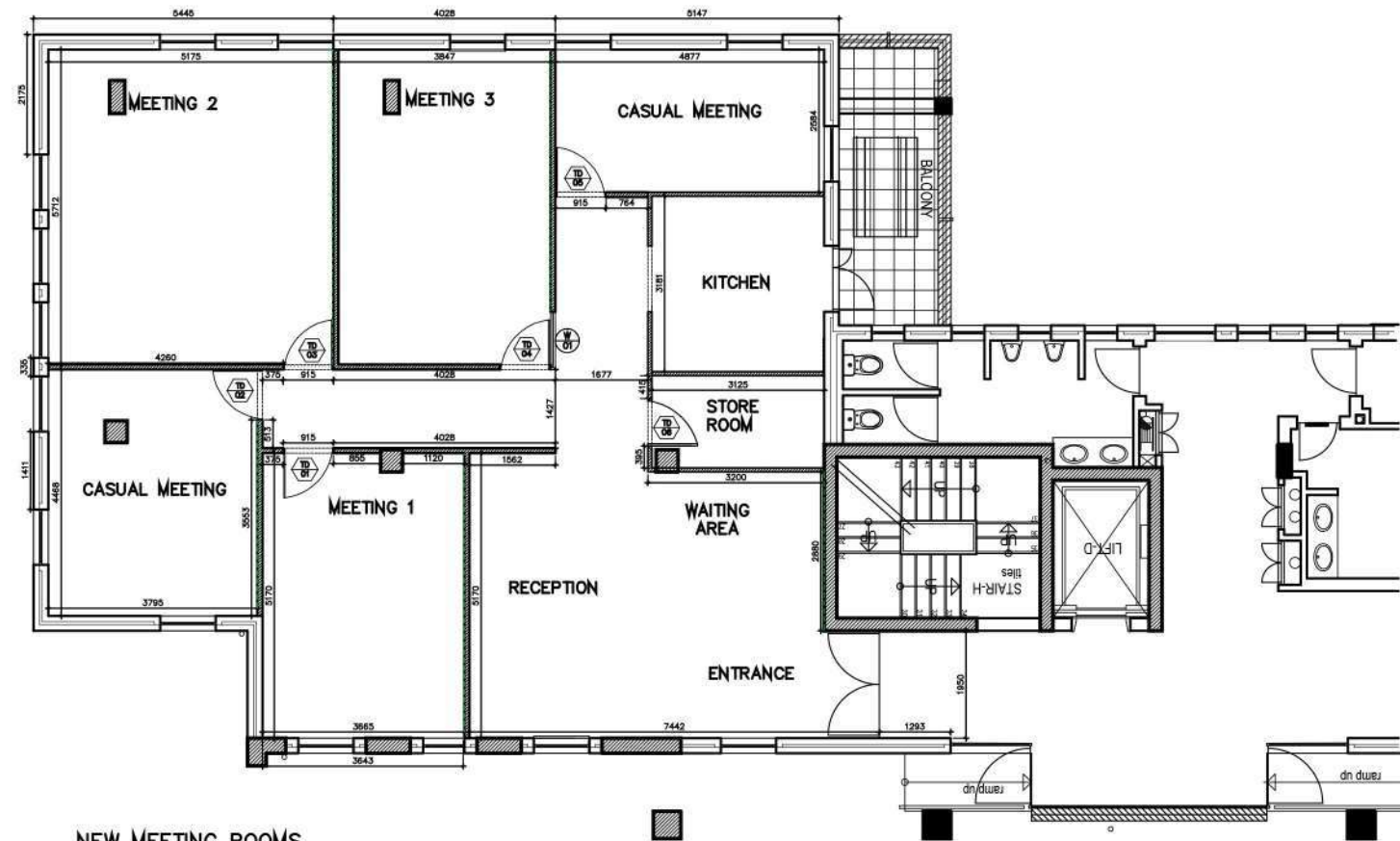
TECHNICALS | ON Q | 06





NEW MEETING ROOMS
OPTION 2
SCALE 1:50

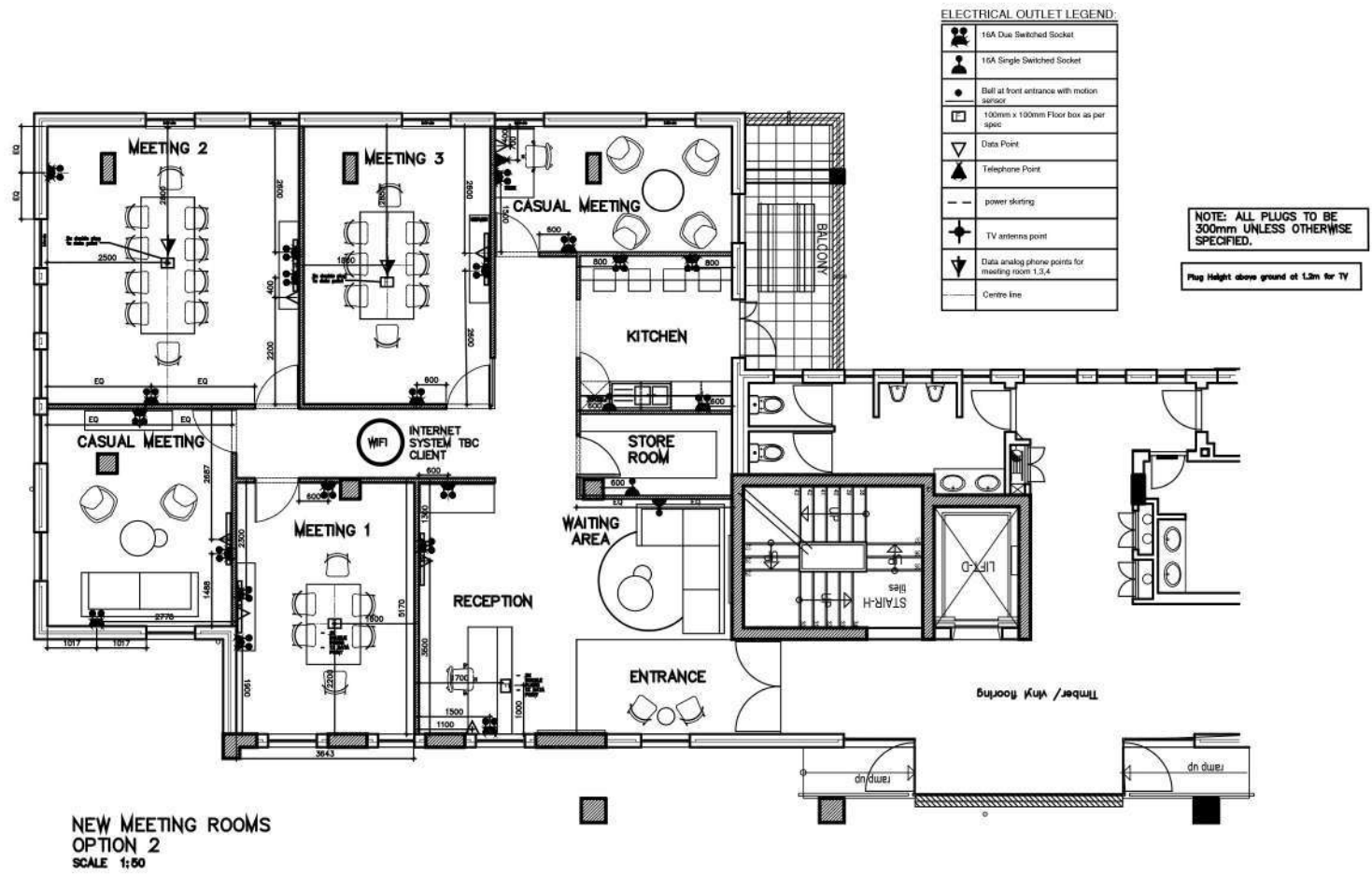
GENERAL LAYOUTS



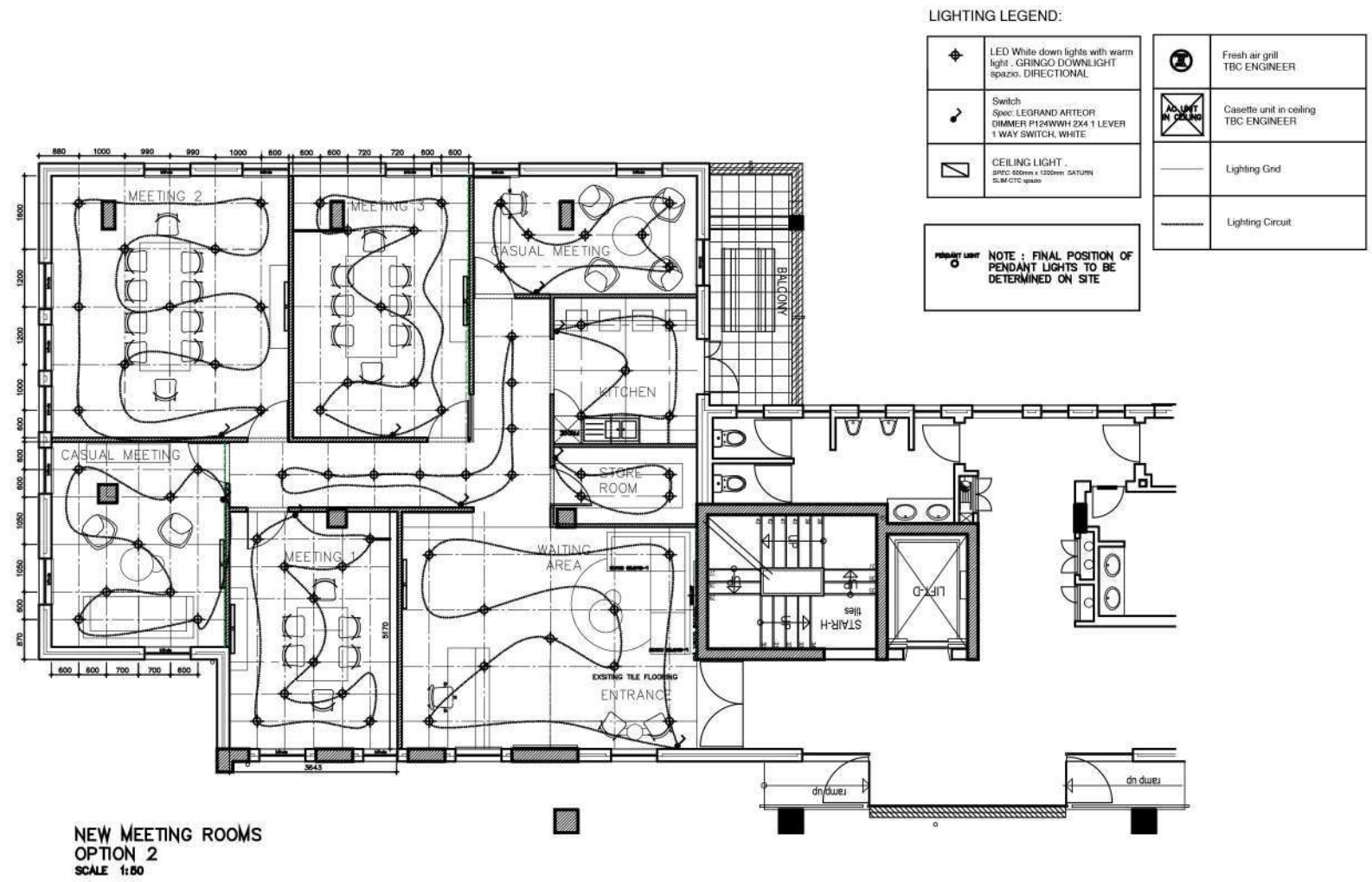
NEW MEETING ROOMS
OPTION 2
SCALE 1:50

NEW 90mm
DRYWALL with
insulation
Charcoal accent wall

NEW BUILDWORK



DATA AND ELECTRICAL



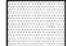




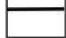
LIGHTING



NEW MEETING ROOMS
OPTION 2
SCALE 1:50

NOTE : NEW SKIRTINGS TO ALL WALLS WHERE THERE IS NO POWER SKIRTINGS.
STAINLESS STEEL EDGE TRIMS BETWEEN FLOOR FINISHES WHERE REQUIRED .

150mm x 16mm painted
hardwood skirting with 5mm
x 5mm cutout 50mm from
the top

-  BELGOTEX CAST EXPOSED. COLOUR TBC
101m²
-  BELGOTEX MOD DESIGN ENTERPRISE CARPET TILE. COLOURS TBC
3m²
-  TERAZZO TILE FROM UNION TILES . CODE W34HPSL
121m²
-  VINYL FLOORING. BELGOTEX DAVENPORT. COLOUR TBC.
39m²
-  ALUMINIUM EDGE TRIM
-  ORAC SKIRTING

FLOOR FINISHES LAYOUT

TIMBER DOOR SCHEDULE

PAINTED SOLID HARDWOOD TIMBER DOOR WITH TIMBER FRAME - TO BE FIXED ONTO NEW / EXISTING BRICK WORK

NOTE: ALL HEIGHTS TO BE CHECKED ON SITE PRIOR TO MANUFACTURING

DOOR TYPE	DOOR NUMBERS	TOTAL
A	GROUND FLOOR TD01 - TD08	2
Description	PAINTED SOLID HARDWOOD TIMBER FRAME/PAINTED SOLID HARDWOOD DOOR/SLIP DOOR FOR DOOR SWEPT, REFER TO LAYOUT	
Size	AS DIMENSIONED - CHECK ON SITE. DOORS TO BE PAINTED WITH BRICK GULLS	
Glazing		
Accessories	HANDLE TO ALLOW FC OF BRASS FOR DOUBLE HUNG HANDLE SET AND KEY HOLE COMBINATOR, HANDLE AS PER SCHEDULE	
Notes and special conditions	TIMBER WORKING AS PER MANUFACTURER'S SPECIFICATION DOORS ARE TO BE CHECKED ON SITE BEFORE INSTALLATION	

WINDOW SCHEDULE

NOTE: ALL HEIGHTS TO BE CHECKED ON SITE PRIOR TO MANUFACTURING

ALL FRAMES TO BE LAMBER IN COLOR

WINDOW TYPE	WINDOW NUMBERS	TOTAL
B	GROUND FLOOR W 02 - W 17	16
Description	FRAMELESS 10MM SOUND PROOF TOUNDED SAFETY GLASS PANELS WITHIN DRYBALL FRAME	
Size	AS DIMENSIONED - CHECK ON SITE	
Glazing	10 mm SOUNDPROOF CLEAR FLOAT GLASS AS PER NBR.	
Accessories		
Notes and special conditions	ALL FRAMES TO BE POLYMER COATED LAMBER	

DOOR AND WINDOW SCHEDULES

SEE YOU SOON

