



I'm Serena Frank

Born to Swiss and Italian parents and raised in Switzerland and South Africa. After graduating from the German International School in Cape Town it was inevitable that the design world was the environment for me as I am keenly aware of visual aesthetics and detail. I am a creative and motivated person. I enjoy all residential design and smaller hospitality projects.

CONENT PAGE

- 01 STRATA | PG BISON
HOSPITALITY DESIGN
- 02 BOXWOOD | THE LUXX
COMMERCIAL DESIGN
- 03 ON Q | CUBE DEVELOPMENT
RESIDENTAL DESIGN
- 04 FERNWOOD | HOUSE GESS
RESIDENTAL DESIGN
- 05 CABIN DESIGN|STAY UNIQUE
COMMERICAL DESIGN
- 06 BARBER SHOP | BARNET FAIR
COMMERICAL DESIGN
- 07 TECHNICAL DRAWINGS

“At first encounter the Karoo may seem arid, desolate and unforgiving, but to those who know it, it is a land of secret beauty and infinite variety”

- Eve Palmer



01 STRATA | PG BISON HOSPITALITY DESIGN

BRIEF

We were tasked to design a dream oasis for content creators and location scouts consisting of a luxury residence with entertainment areas and landscaped surrounds. It is all about experience and creating an instagrammable location. The design must celebrate eating, sleeping, bathing and socializing using the four elements: fire, water, earth and air.

CONCEPT

The Karoo has an incredibly well preserved ecosystem and one of the most important fossil deposits in the world. The concept has been based on fossil and archaeological stratification slabs to represent the strata where fossilisation was formed. Pathways lead the client to discover different experiences making the client interact with the space as an explorer of "fossilisations as experiences". The interiors reflect the barren and rocky semi-desert of the Karoo and gives the feeling of being part of the environment while luxury suites emulate fossil finds. Interiors mirror the Karoo's semi-desert landscape, offering an immersible experience. This visually engaging oasis caters to location scouts and content creators. The structures harmoniously blend the four elements, especially water, a vital part in fossil formation. A celebration of basic human needs, the design intertwines sustenance, resting, bathing, and socializing, epitomizing the Karoo's allure.

> PLACED TOP 9 - 2023 PG BISON COMPETITION

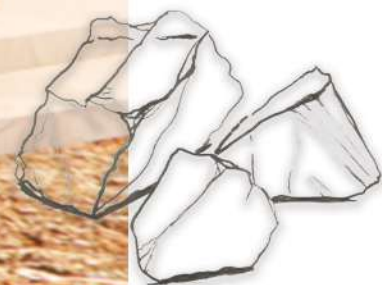


STRATA EXTERIOR





RECEPTION AREA TO THE STRATA





EATING EXPERIENCE WITH INTERACTIVE COOKING CLASSES WITH KAROO INSPIRED FOOD



OPEN BAR EXPERIENCE WITH LOCAL BEERS, WINES AND SPIRITS



SONGOLO - HALDANE MARTIN



CAMARA LIGHTS



TOBO CHAIR



CUSTOM MADE



ASH WOOD STOOL



WATER



AIR



EARTH



FIRE

COURTYARD WITH FOSSIL POOL AND
ABSTRACT SKELETON INSTALLATION





LIVING IN LUXURY SUITE



LUXURY SUITE | KITCHEN LOUNGE AREA



POD SUITE | BATHROOM FOR SMALL



BATHROOM IN LUXURY SUITE



OUTDOOR SOCIALIZING BATHING AREA



02 BOXWOOD | THE LXXX COMMERCIAL DESIGN

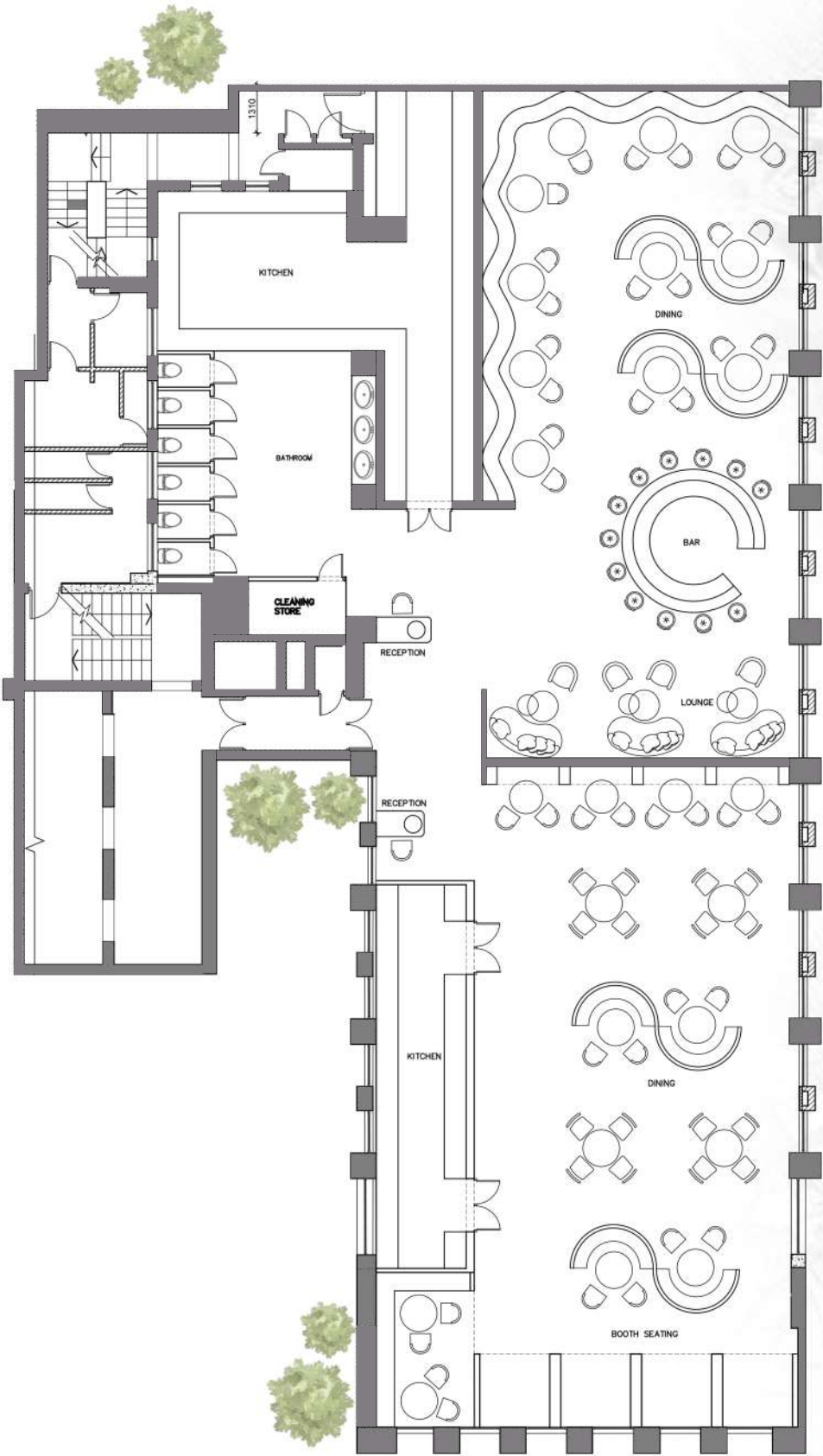
BRIEF

We were tasked a competition by the property by the development company Boxwood to design a city block along Strand, Loop and Bree street with a wide range of possibilities. The primary objective is to embrace creativity and uniqueness. To achieve this, consider factors such as the needs of the greater cbd.

CONCEPT

The Cape Town CBD is a bustling city comprising dynamic business, social activities and night life. It is a perfect central place from which to explore the mother city. For this reason I have designed a botique hotel and life style center offering entertainment such as a casino, a design/ art gallery, shops, apartments, bar/lounge as well as a collection of restaurants providing the best of global cusuine under one roof. The building will also include a hamman (spa) for physical detoxification and deep relaxation. The rooftop also includes and infinity pool and a lounge and bar area.







DINNING SEATING OF MORROCCON RESTAURANT



DINNING SEATING OF MORROCCON RESTAURANT



BOOTH SEATING IN MOROCCO RESTAURANT



1. MORROCON LIGHT 2. CUSTOM MADE SIDE TABLE 3. PUNTO DINNING CHAIR LAVA | WEYLANDTS 4. NG-WANYA PENDANT 5. TURRENT GOLD TABLE LAMP 6. EDEN-ROCK ARMCHAIR | ROCHE BOBOIS 7. CUSTOM MADE COFFEE TABLE



1. ANTIQUITY SAGE BY VERTEX USED ON SOFA AND CUSHIONS 2. NO IVORY BY HERTEX FOR CHAIRS, SOFAS AND CUSHIONS 3. CONTESSA VELVET RUST BY HERTEX USED IN RESTAURANT CHAIR AND CUSHIONS 4. PERVERADE BRASS USED FOR DIVIDERS 5. BRASS FITTINGS USED FOR ALL BRASS ELEMENTS AND DETAILS 6. ROCK CLADDING REFERENCE USED FOR WALL IN SPA 7. TERRA BY BEST WOOD USED FLOORING IN RESTAURANT 8. CUSTOM MADE WALL PAPER FROM ROBIN SPRONG 9. GREYMIST BRUSHED BY OGGIE FLOORING USED ON TABLES 10. BRASS FITTINGS FOR ALL BRASS ELEMENTS AND DETAILS 11. CUSTOM MADE WALLPAPER FROM ROBIN SPRONG 12. STRATA ARGENTUM FROM NEOLITH 13. TEAL TILE BY STUDIO MASION



LOUNGE SEATING IN ASIA RESTAURANT



DINNING IN ASIA RESTAURANT



BUILT IN SEATING WITH CURVED WALL IN ASIA RESTAURANT



1.COSTUM MADE BRASS HANGING INSTALLATION 2. PALM LEAF DECOR 3. BOLETUS 4 WATT LED PORTABLE BLACK | LIGHTING.CO.ZA 4. BLACK COFFEE TABLE | WEYLADTS 6. 0414 CHAIR | GALOTTI & RADDICE



SPA AND HAMMAN ON ROOF TOP



02 CUBE DEVELOPMENT | ON Q RESIDENTIAL DESIGN

BRIEF

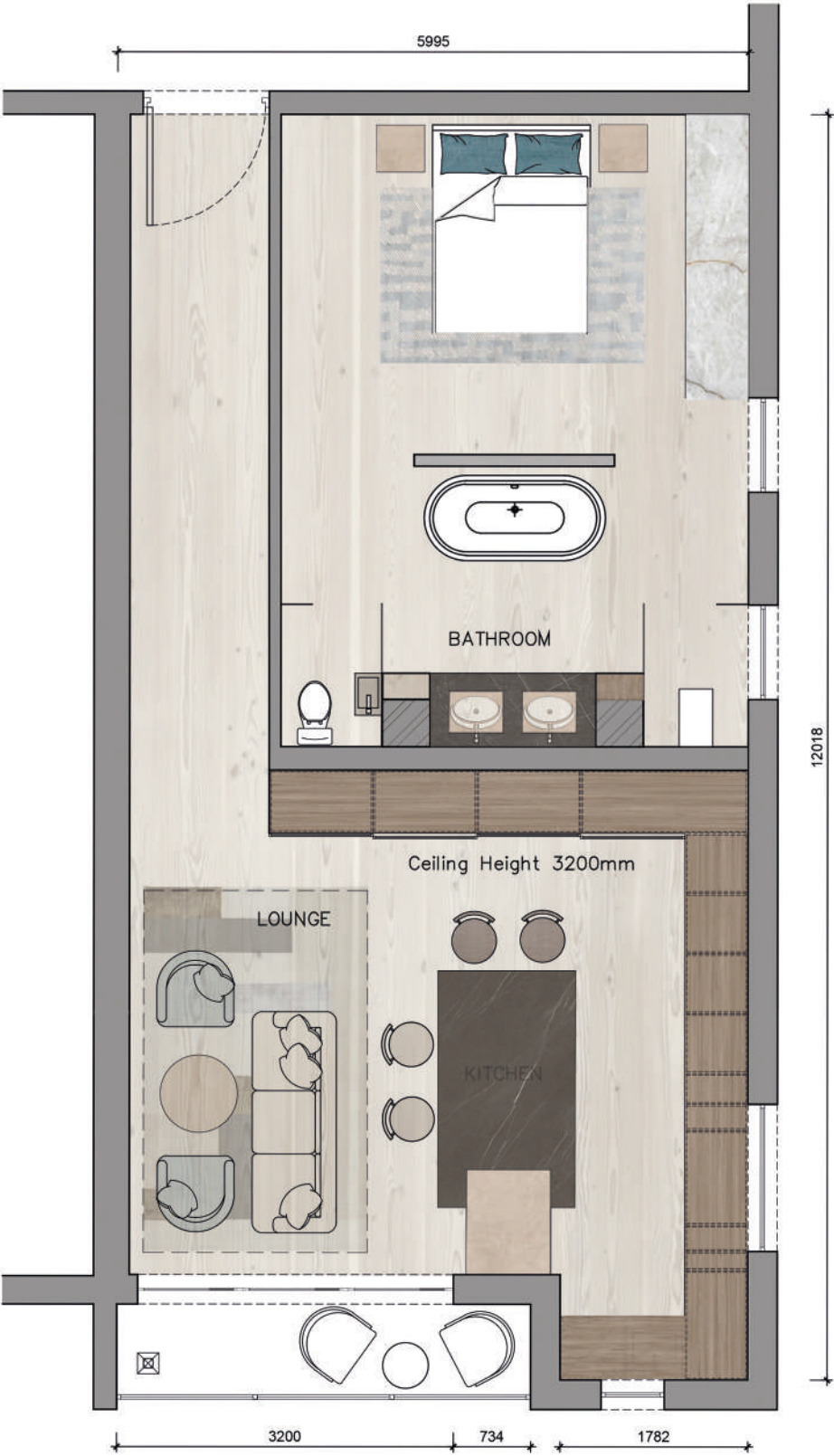
We were tasked to design one the three 'show apartments' in order for clients to select their chosen purchase. We were asked to choose a design aesthetic and carefully consider this when designing your kitchen, bathroom and cabinetry detail.

ABOUT

The beautiful one bedroom apartment showcases a contemporary look with a fairly open floor plan. The main entrance of the apartment leads you into the lounge area with stunning backdrop of Cape Town city and table mountain. There is plenty of storage space in this apartment, situated all around the kitchen as well as the bathroom. The lounge area includes a cozy electric indoor fire place accompanying the light blue touches on the furniture. The bedroom includes an open plan bathroom divided by a free standing wall at the foot of the bed. The toilet however may be entered either through the bedroom or the main passage way. Despite the smaller size of the apartment, the openness and flow gives this space an overall bigger look and elegant feel. Overall this apartment is perfect for an individual or couple looking for an escape of Cape Town's busy city life with the comfort of a maintainable homely space.



LOUNGE AND KITCHEN IN ON Q SHOW APARTMENT





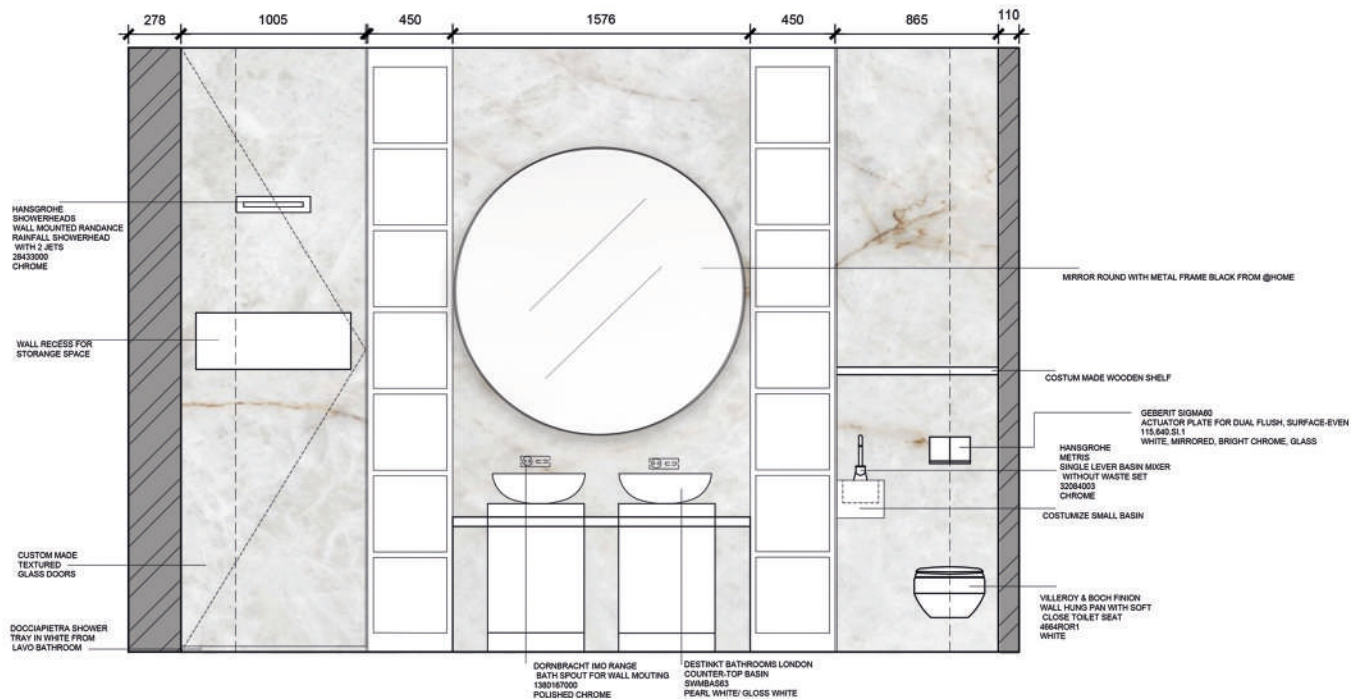
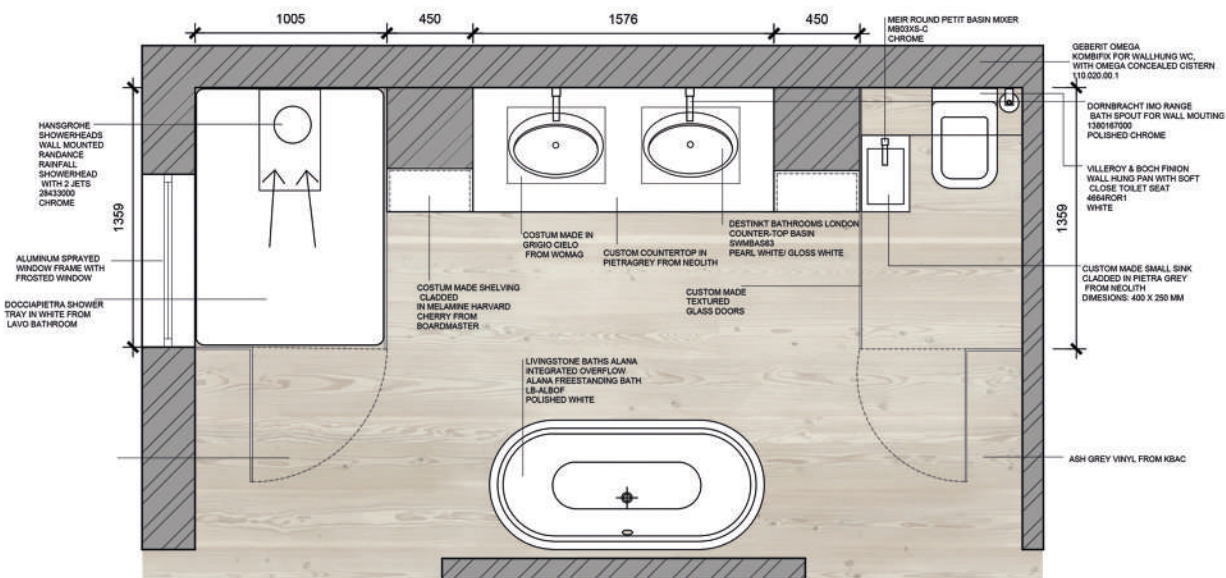
LOUNGE WITH FIREPLACE



BEDROOM IN ON Q APARTMENT



BEDROOM IN ON Q APARTMENT

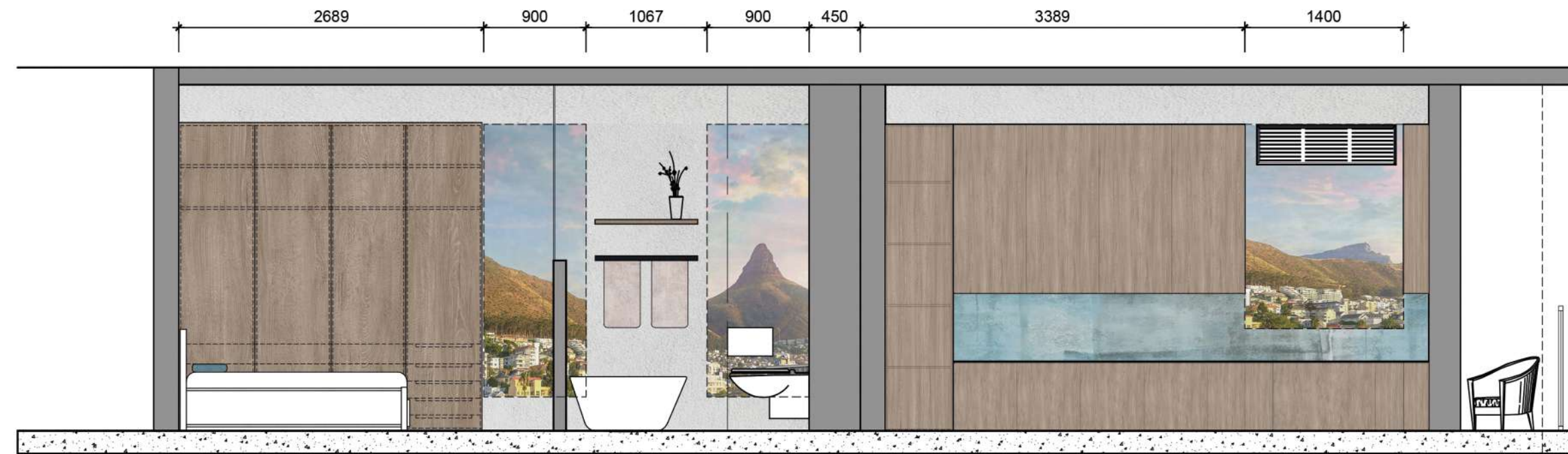




1. BUBLE CHANDELIER | LIGHTING.CO.ZA 2. TOLEDO VELVET STOOL | @HOME 3. WOOD SLATTING



6. BARSTOOL | @HOME 7. CUSTOM MADE LIGHT 8. APPARATUS STUDIO MEDIAN SCONCE | MOOILIGHT 9. WHITE SOFA | WEYLANDTS 10. REEVES CHAIR | MINOTTI



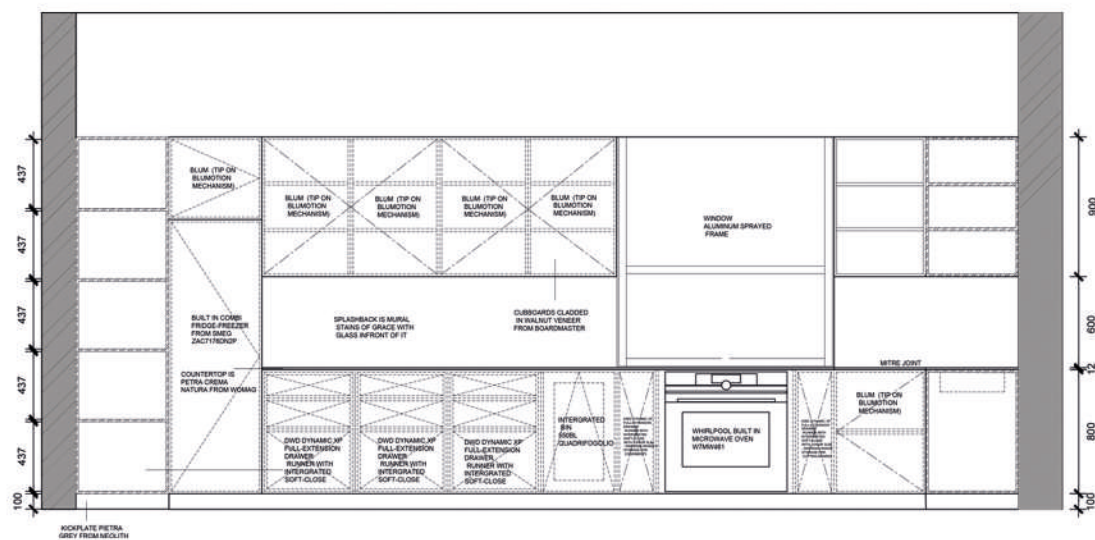
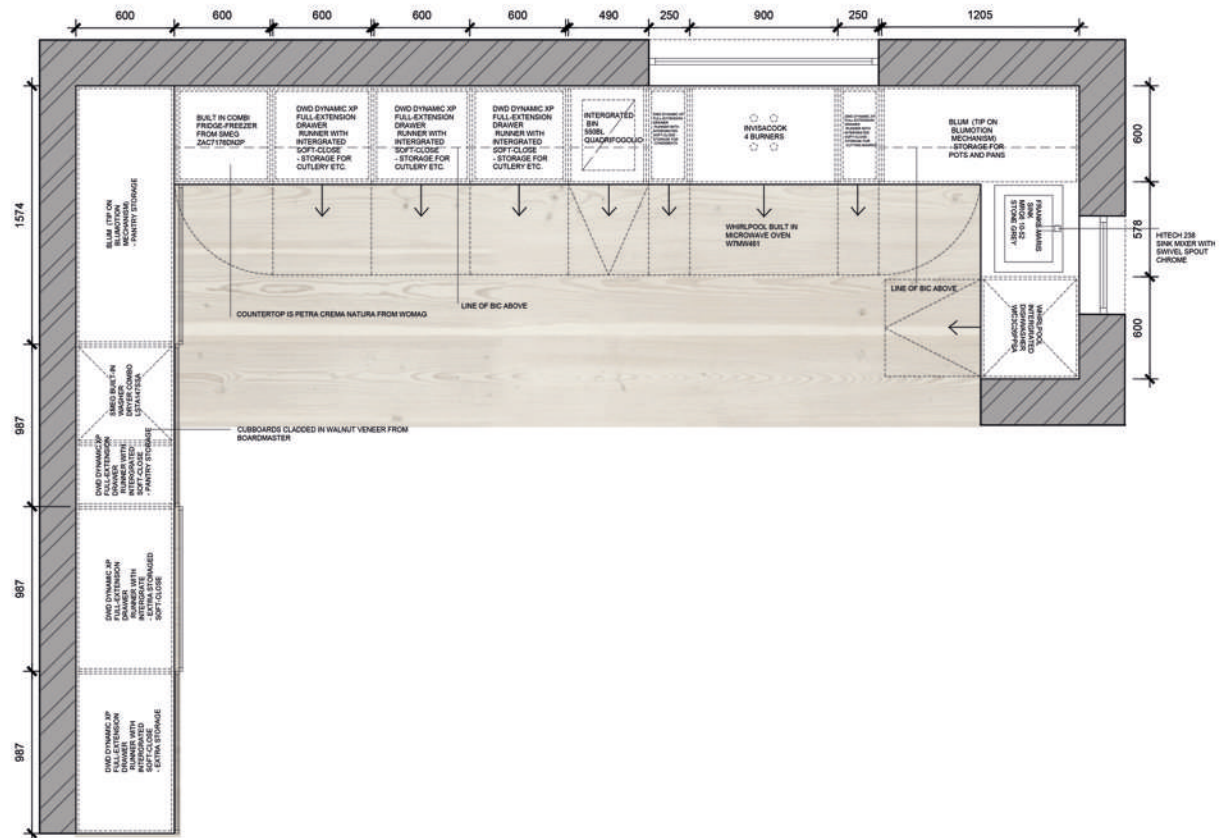
ELEVATION OF APARTMENT

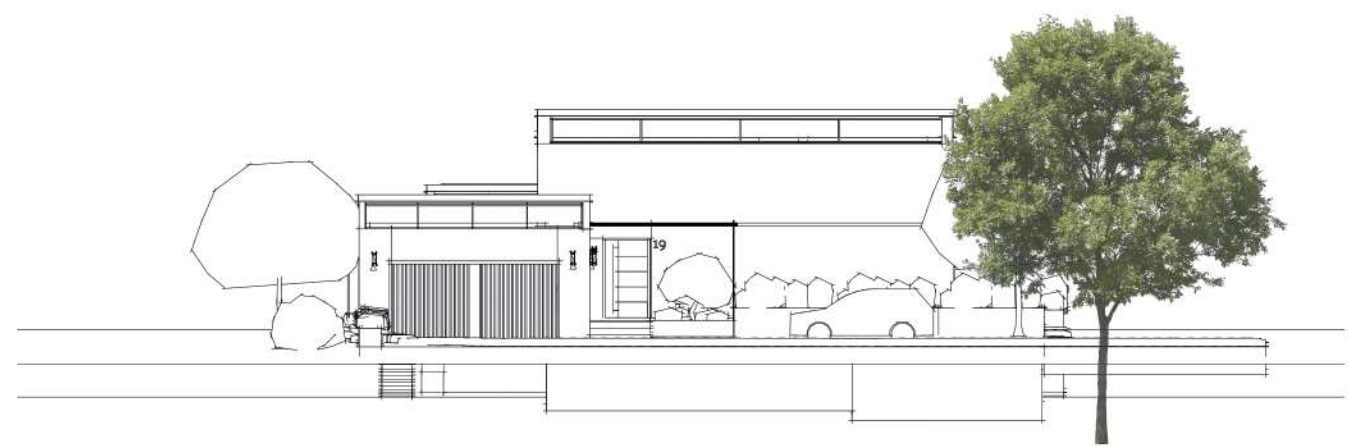


DETAIL OF KITCHEN WITH SLIDING BUILT IN CUPBOARDS FOR EXTRA STORAGE



1. SEEM AQUA BY HERTEX FROM ON ARMCHAIRS AND OTTOMAN 2. PRIME SANDSTONE FROM HERTEX USED ON ON COUCH 3. MAGICAL (UNBACKED) TIMBER FROM HERTEX USED ON DINNING CHAIRS 4. ASH GREY VINYL FROM KBAC USED FOR FLOORING IN THE WHOLE APARTMENT 5. BRASS FITTING USED FLOOR FINISHES IN THE APARTMENT 6. AMERICAN SILVER FROM WOMAG USED AS FEATURE WALL 7. TEXTURED GLASS FROM PEAK COOK GLASS USED ON THE BATHROOM DOORS 8. HIMALAYA CRISTAL FROM NEOLITH USED AS FEATURE WALLS 9. WALNUT VENEER FROM BOARD MASTER USED FOR CUPBOARDS, KITCHEN AND SHELFING 10. FLUTTED GLASS FROM PEAKCOOK GLASS USED FOR CUPBOARDS IN KITCHEN 11. PETRA CREMA NATURA FROM WOMAG USED ON VANITY AND KITCHEN TABLE 12. GRIGIO CIELO FROM WOMAG USED AS FEATURE WALL 13. PIETRA GREY FROM NEOLITH USED ON TABLE TOP AND VANITY





04 FERNWOOD RESIDENTIAL DESIGN

ABOUT

We were tasked to design a new house in the Fernwood estate to accomodate a family. The property should be designed in a way to optimze the view.

CONCEPT

The surroundings in Knysna are green with a lot of natural elements, which I have incorporated into my design by using natural materials. The flow of the house is open plan with a lot of sliding doors and windows. This and the mono-pitched roof help to bring light into the entire space. Additionally, by creating many large windows I have prioritized the importance of having a view all around. The floating staricase is a big feature of the house, as the plants below it incoperate the natural surroundings of the property.



FERNWOOD EXTERIOR





SIDE VIEW OF HOUSE



LOUNGE WITH BOOK SHELF



DINNING ROOM WITH WINE AND COFFEE STATION





KITCHEN WITH DINNING



STAIRCASE WITH PLANTS



05 CABIN DESIGN | STAY UNIQUE COMMERCIAL DESIGN

ABOUT

We were given the opportunity to create unique and innovative cabin designs for the company Stay unique. A picturesque location was chosen to expand in the Western Cape.

CONCEPT

Location is luxury. That's why we have decided to place our cabin at the breathtaking waterfall farm situated in Citrusdal. A stone throw away from the Cederberg mountains. Drawing inspiration from the surroundings like the fynbos greenery and the rocky background. We decided to go for a natural color palette and materials. The farm grows lots of citrus fruit trees which can be plucked and used to make fresh juice. Additionally, its kloof and ravines shelter ancient Khoisan rock art which can be explored. Across the farm there are places to cycle and hike to

this is the perfect location
to relax and connect with nature.



EXTERIOR OF CABIN





FIRST IMPRESSION WHEN ENTERING THE CABIN



BATHTUB WITH VIEWS OUTSIDE



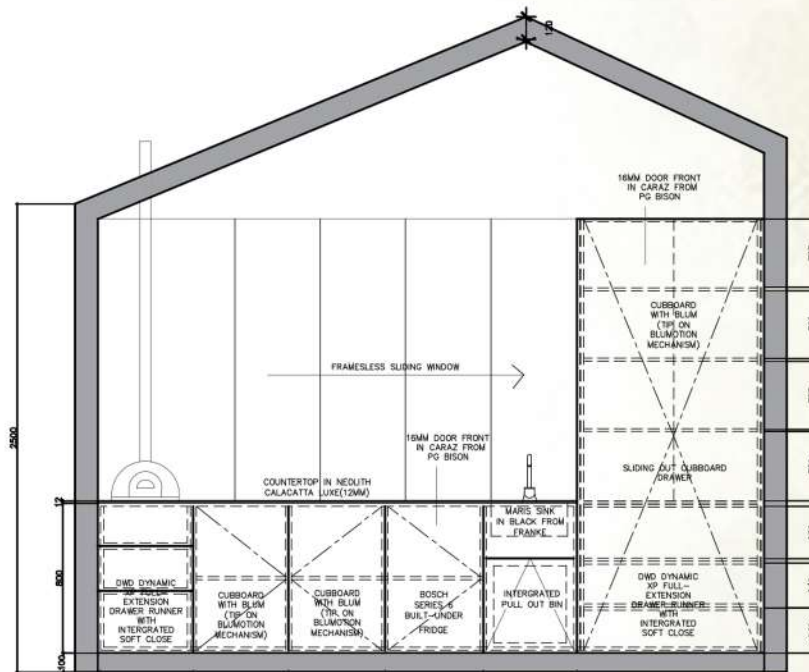
BASIN WITH VIEWS



1. IRREGULAR MIRROR | ELEVEN PAST 2. CUSTOM MADE LIGHT 3. MIER ROUND HAND SHOWER WALL MOUNTED | FLUSH 4. WOOD SIDETABLE | CIELO 5. MIER ROUND | FLUSH 6. FREESTANDING BATH | FLUSH



BED WITH ABOVE BED STORAGE





DOUBLE SHOWER WITH BEAUTIFUL VIEW



1. COCO BROWN DECKING | BEST DECK 2. FORTY WINKS DREAMLAND MATERIAL | HERTEX FOR CUSHIONS 3. CASA NIVEL PLASTER | HHERTEX FOR BENCH SEATING 4. ESQUIRE CHIC SAGE MATERIAL | HERTEX FOR CUSHIONS 5. LIGHT OAK VINYL | KBAC FLOORING 6. TREVIO MELAWOOD SUPERTEXTURE | PG BISON 7. BLACK HANDLE | HANDLES INC 8. ONA BRUSHED | OGGIE FOR BUILT IN ITEAMS 9. CALACATA LUXE ULTRA SOFT | NEOLITH FOR KITCHEN COUNTER TOP 10. CICAL CANAMA SABLE RUG | ROWLEY & HUDGGES 11. STRATA ARGENTUM | NEOLITH FOR FEATURE WALLS 12. MOSS LIM TILE FROM WOLKBERG FOR VANITY SPLASHBACK



OUTSIDE SEATING AREA



FIREPIT SEATING AREA





06 BARBER SHOP | BARNET FAIR

ABOUT

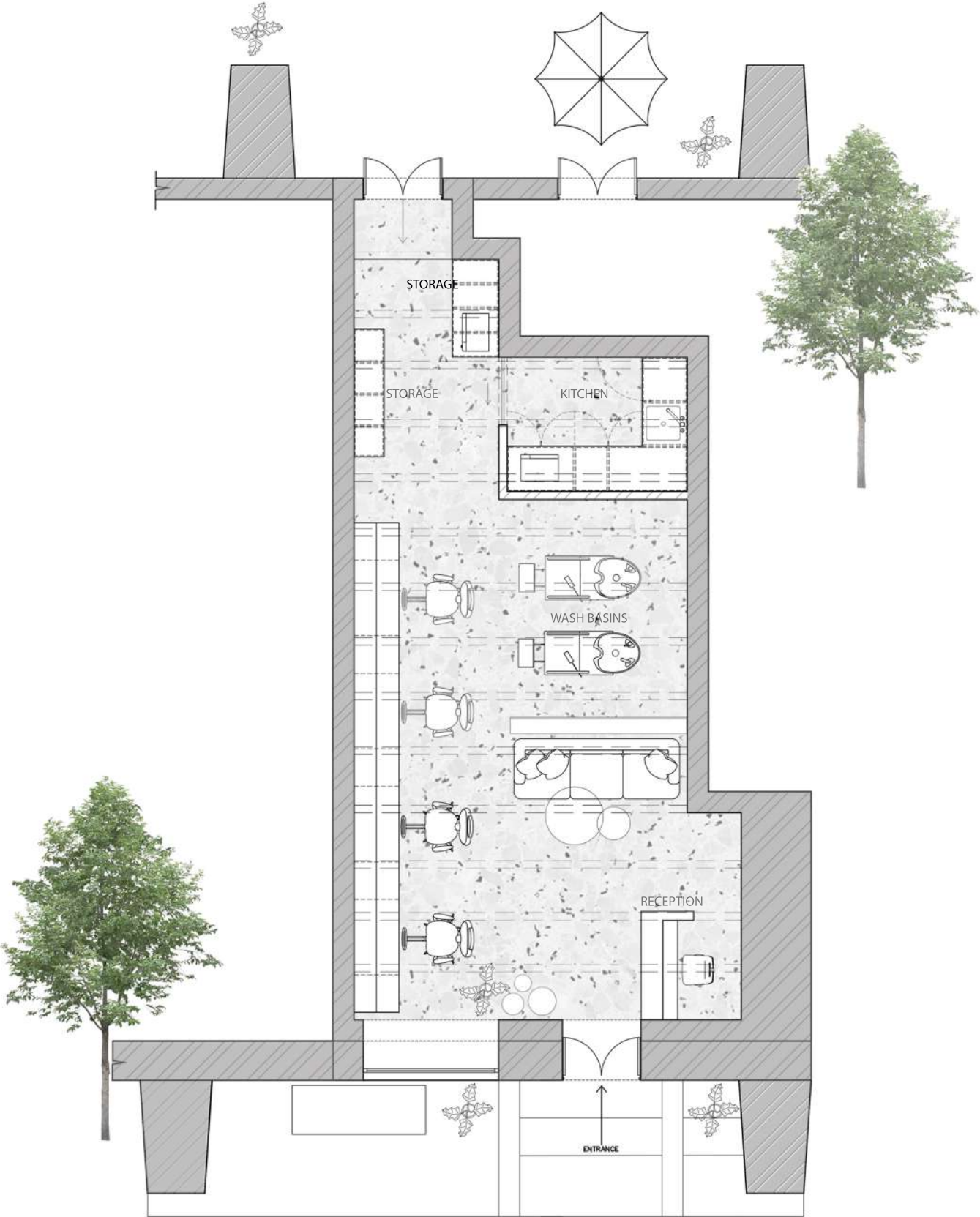
We were tasked to redesign and refresh an Interior space of Barnett Fair Barbershop located on bustling Bree street in Cape Town city center. The design should be contemporary, edgy and clean while taking into account the natural, stone, etc.) and should evoke a feeling of freshness and a sense of a "hidden gem in the city center"

CONCEPT

Barnet Fair Barbershop has been a traditional Barbershop for over 12 years and will now be redesigned. I have created a design with a fairly clean look with some edgy and contemporary elements. Additionally I have added some natural elements such as wood and plants to bring some life into the space. I have used colours such as brown and black to create a masculine feel. The space has lots of space for storage and display shelf for products. The redesigning of the space will have a new and comfortable atmosphere for the customers.



ENTRANCE AND WAITING AREA





CUTING STATIONS WITH SMART STORAGE



WAITING AREA WITH DISPLAY SHELF BEHIND



WASH STATIONS WITH SHELFING BEHIND IT



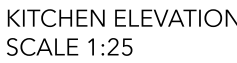
1. MANHATTAN FABRIC STOOL BROWN | LEROYMERLIN 2. CUSTOM MADE PENDANT LAMP | WIREWORLD 3. CUSTOM MADE POT 4. BOLETUS 4 WATT LED PORTABLE BLACK RECHARGEABLE TABLE LAMP | LIGHTING.CO-ZA 5. JOHAN, 3-SEATER SOFA, MAYA CREAM | THE SOFACOMPANY 6. MALDIVES COFFEE TABLE IN PEARL 7. ZARRINA NESTED COFFEE TABLE SET | CIELO 8. POTTED STRELITZIA IN BLACK PLASTIC POT

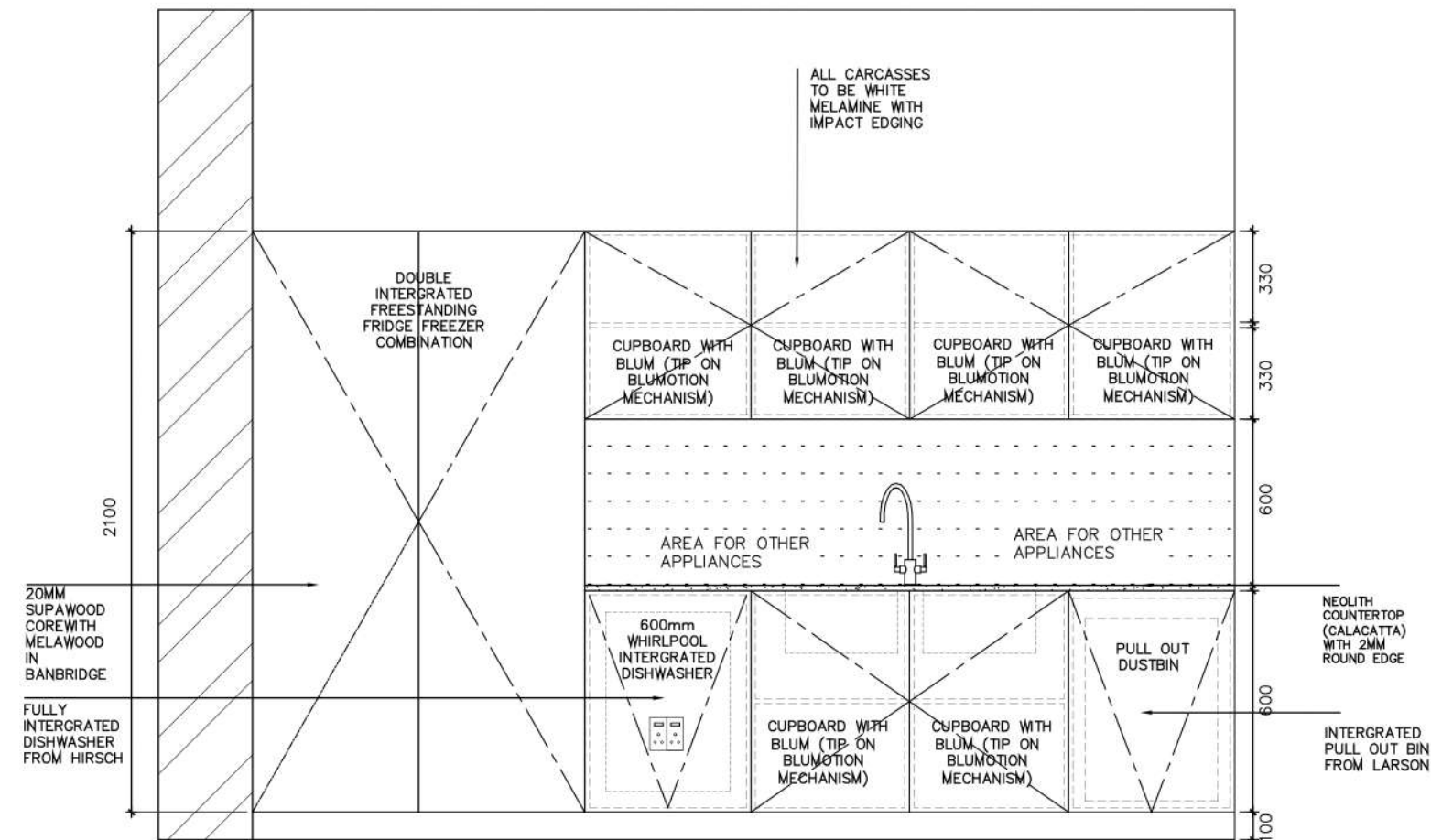


1. ONA LIVING BRUSHED GREYMIST FROM OGGIE FLOORING USED ON RECEPTION DESK, COFFEE TABLE AND WOOD PANNELING
- 2.TERAZZO LG22HPSL FROM UNION TILE USED ON FLOOR
3. STARRY NIGHT ROCKFACE FROM WOMAG USED AS A STONE WALL
4. CUSTOM MADE WALLPAPER FROM ROBIN SPRONG
5. SKYLIGHT DARKNESS FROM DELUX USED ON WALLS
6. CONGO SUPERMATT MELAWOOD FROM PG BISON USED IN KITCHEN, WORKSTATIONS, CUBBOARDS
7. BLACK HANDLE FROM HANDLES INC
8. AR-BENTO DUKAT FROM MAX ON TOP USED FOR KICKPLATES
9. CALDERA MELAWOOD SUPERGLOSS FROM PG BISON USED ON RECEPTION DESK AND KITCHEN
10. LAZY WHISPER FROM HERTEX USED ON CUSHIONS
11. CHILLING NOUGAT FROM HETEX USED ON SOFA
12. CROCODILE CREEK MOCHA FROM HERTEX USED BARBER SHOP

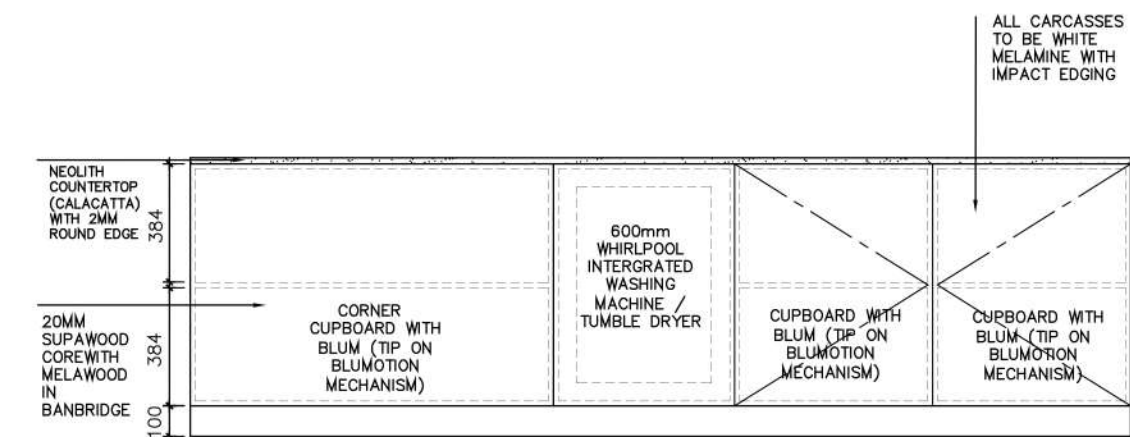
TECHNICAL DRAWINGS

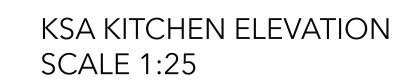
KITCHEN JOINERY
KSA ELEVATIONS
WORKING DRAWING PACKAGE

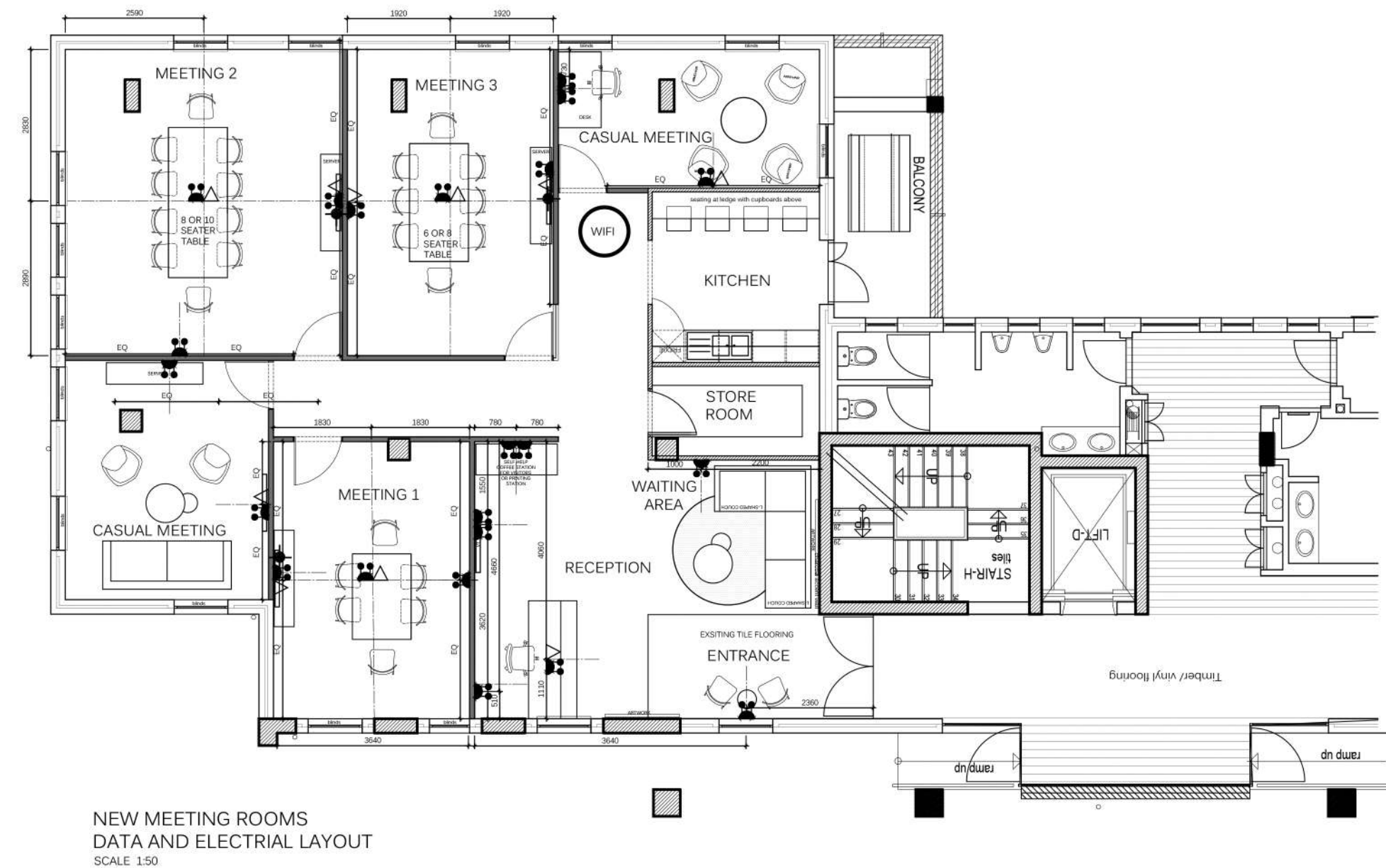
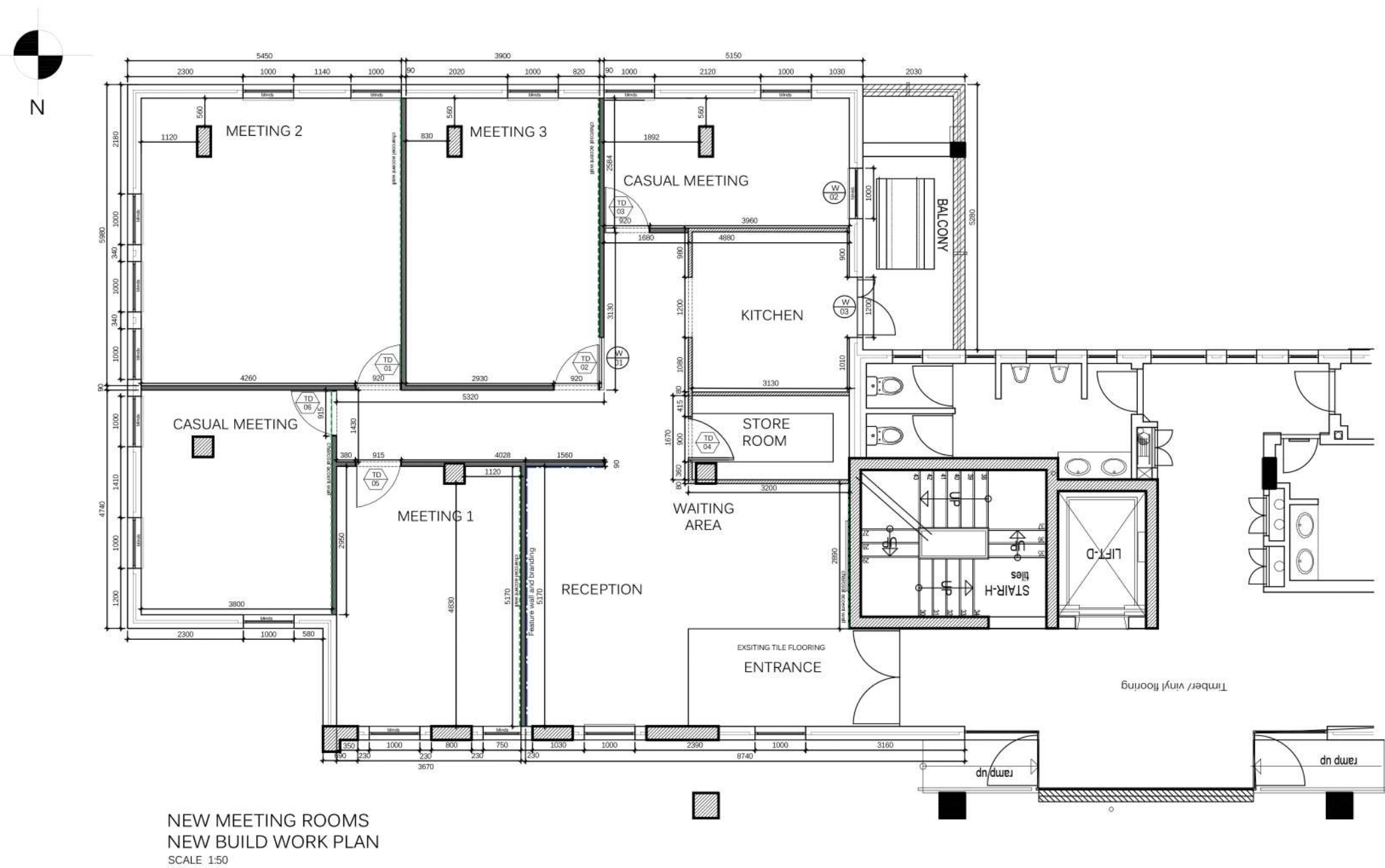




SCULLERY ELEVATION
SCALE 1:25







ELECTRICAL OUTLET LEGEND:

	16A Double Switched Socket
	16A Single Switched Socket
	Bell at front entrance with motion sensor
	100mm x 100mm Floor box as per spec

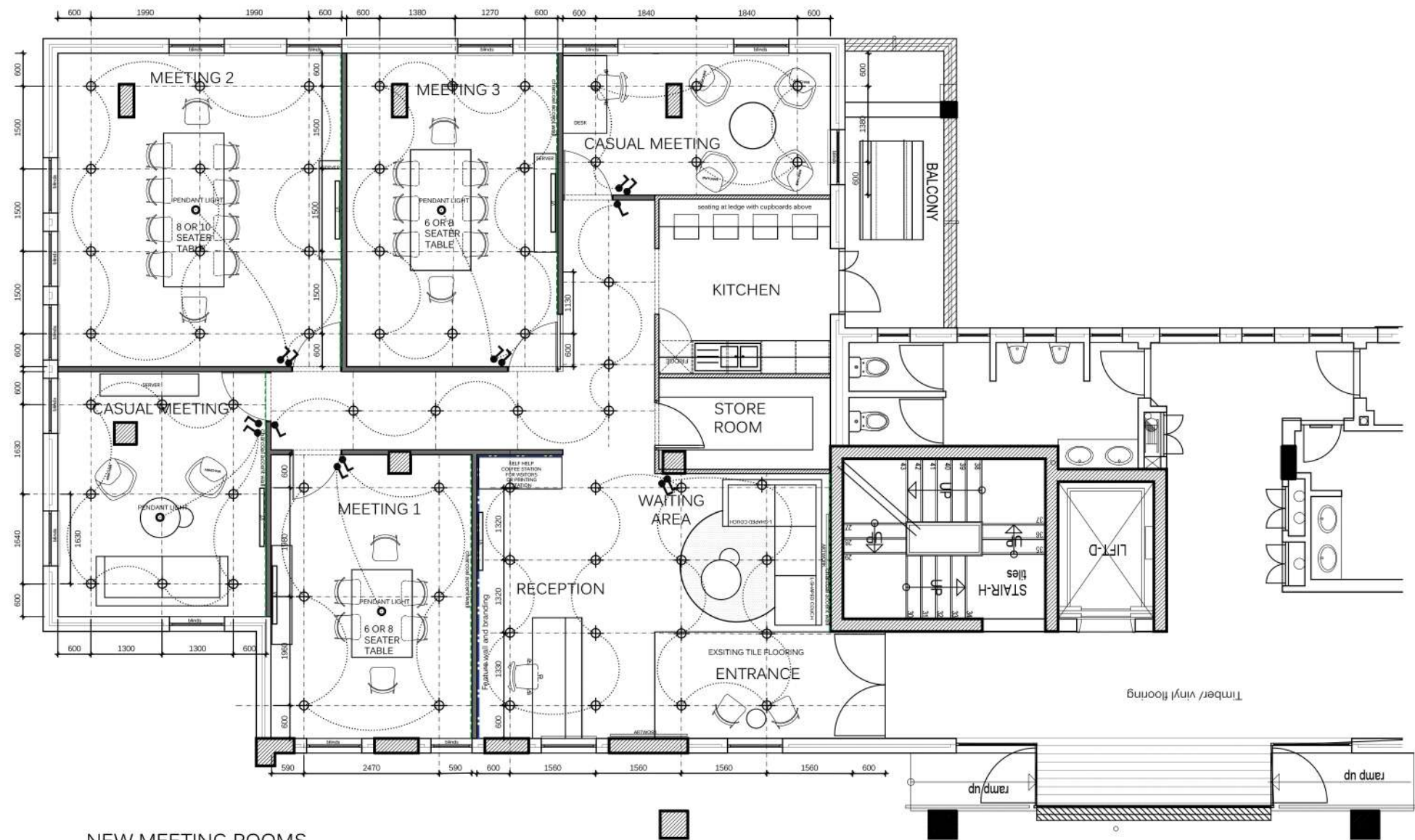
	Data Point
	Telephone Point
	power skirting
	TV antenna point
	Data analog phone points for meeting room 1,3,4

NOTES : PLUGS IN ALL PODS TO HAVE THE FOLLOWING:
- USB
- 2POINT
- 3POINT

ALL PLUGS TO BE AT 300mm AFFL UNLESS OTHERWISE SPECIFIED.

NOTE: ALL PLUGS TO BE 300mm UNLESS OTHERWISE SPECIFIED.

WIFI INTERNET SYSTEM TBC CLIENT



NEW MEETING ROOMS
OPTION 2
SCALE 1:50

LIGHTING LEGEND:

	PANTO 2210 ROUND GU10 78MM DOWNLIGHT
	LE GRAND YSALIS CHAMPAGNE LEVER WALL DIM PRESS FROM THE LIGHTING WAREHOUSE
	MERCURY OPAL ROUND GLASS PENDANT LIGHT FROM LIGHTING.CO.ZA



NEW MEETING ROOMS
OPTION 2
SCALE 1:50

STAINLESS STEEL EDGE TRIMS BETWEEN FLOOR FINISHES WHERE REQUIRED.

150mm x 16mm painted hardwood skirting with 5mm x 5mm cutout 50mm from the top

	BELGOTEX CAST EXPOSED COLOUR BEIGE TOTAL M2:63m6
	BELGOTEX MOD DESIGN ENTERPRISE CARPET TILE IN COLOUR RED TOTAL M2:16m9
	VINYL FLOORING BELGOTEX DAVENPORT. COLOUR ASH BROWN TOTAL M2:60.3
	10MM STAINLESS STEEL TRIM FROM MTRM
	GLAZED PORCELAIN TILE FROM UNION TILES CODE :6S24MAT

OFFICE PROJECT | TIMBER DOOR SCHEDULE

Date: 15/09/2023

Version: 1.0

Door Type	Door Numbers	Total #
A	GROUND FLOOR	
	TOTAL: TD01, TD04, TD06, TD08	4
	FIRST FLOOR	
	SECOND FLOOR	

Description: PAINTED SOLID HARDWOOD TIMBER FRAME PAINTED SOLID TIMBER DOOR WHITE COLOUR FINISH PLACED IN HARDWOOD. SIZES SHOWN. THE DOOR SHALL REFER TO LARGEST DIMENSION. CHECK ON SITE DOORS TO BE FIXED ONTO BRICK WALLS

Size: AS DIMENSIONED

Glazing: N/A

Interpenetration: N/A

Notes and special conditions: N/A

OFFICE PROJECT | WINDOW SCHEDULE

Project Name: **Alpha Office Building**

Location: **123 Main Street, Cityville**

Architect: **Architects & Co.**

Client: **ABC Corporation**

NOTE: ALL HEIGHTS TO BE CHECKED ON SITE PRIOR TO MANUFACTURING

ALL FRAMES TO BE GREY IN COLOUR

WINDOW TYPE	WINDOW NUMBERS	TOTAL
B	SINGLEHUNG (W001, W002, W003)	3
	FIRST FLOOR	0
	SECOND FLOOR	0
		0
Descriptions FRAMELESS 3MM SOUND PROOF TOUGHENED SAFETY GLASS PANELS WITH WHITE FRAME		
Size AS DIMENSIONED - CHECK ON SITE		
Glazing 30 mm SOUNDPROOF CLEAR FLOAT GLASS AS PER NBR.		
Manufacturing ALL FRAMES TO BE POWDER COATED IN WHITE		
Notes and special conditions		

SEE YOU SOON!