

MICHAELA JOHNSTON FORBES  
INTERIOR DESIGN PORTFOLIO 2023

MICHAELA JOHNSTON FORBES

PORTFOLIO



# CONTENTS

---

- 01. BOXED  
PG 1 - 5
- 02. CAESARSTONE  
PG 6 - 9
- 03. HOUSE BENNETT  
PG 10 - 15
- 04. STAY UNIQUE  
PG 16 - 20
- 05. ON Q  
PG 21 - 24

- 06. BARNET FAIR  
PG 25 - 28
- 07. METaverse  
PG 29 - 32
- 08. PRODUCT DESIGN  
PG 33 - 36
- 09. PHOTOGRAPHY  
PG 37 - 38
- 10. CAD WORKING DRAWINGS  
PG 39 - 45

# 01. BOXED

## BRIEF

YOU live alone / with family / friends / a partner  
... you write the script of this story.

Aparment J Forbes is a modern and relaxed  
home for two, featuring natural earthy tones  
with touches of colour.

Location - 7 Welgemeend Rd, Gardens CPT

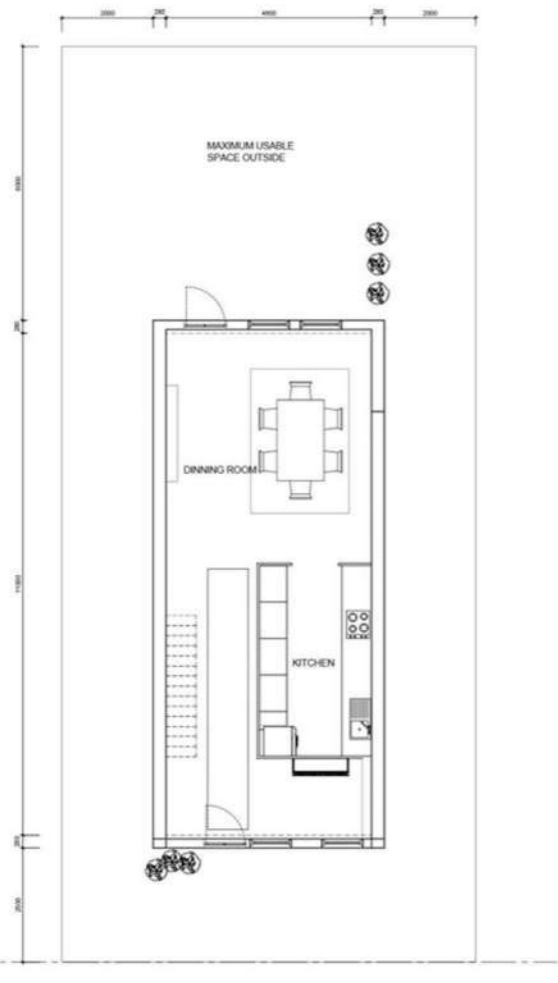




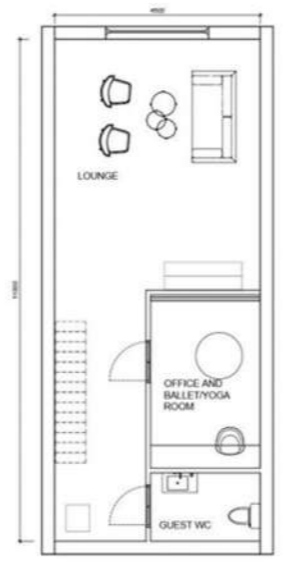
DINNING ROOM



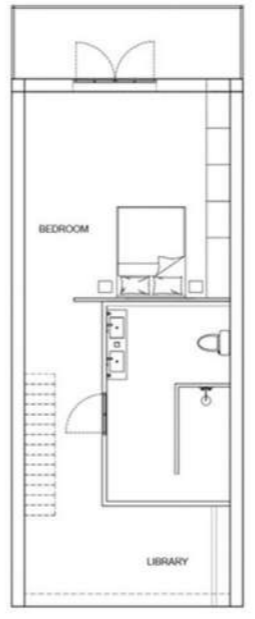
ENTRANCE



FLOOR 1



FLOOR 2



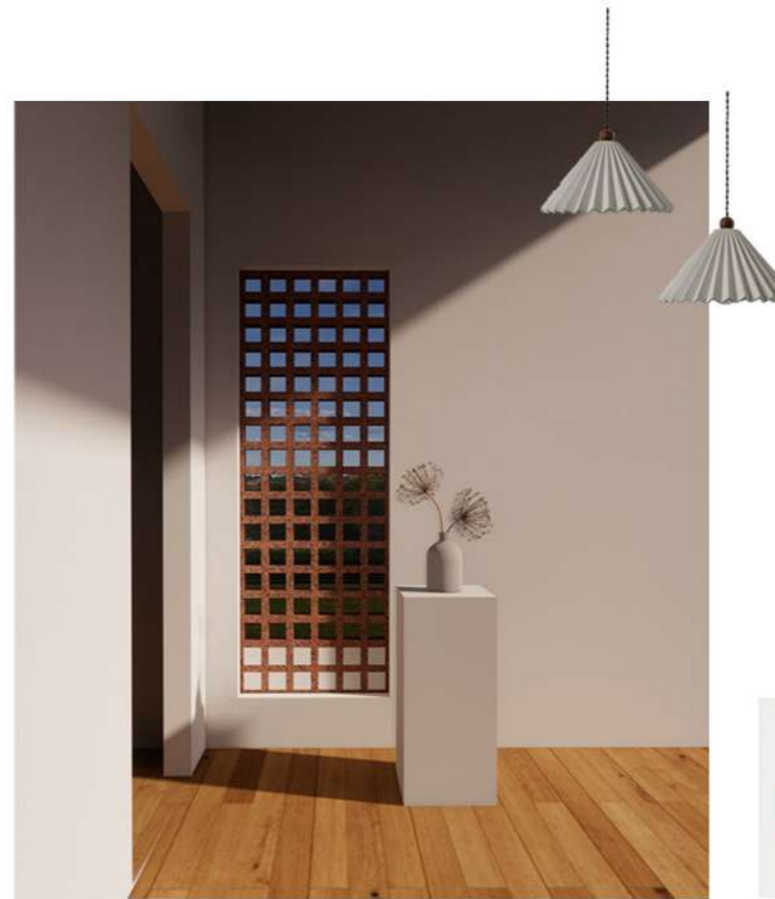
FLOOR 3







BEDROOM



PASSAGE



## 02.

### C A E S A R S T O N E C O M P E T I T I O N

SDC 2023 Brief: Amplify

At its core, Amplify set out to build a sustainable, inclusive legacy for future generations. While bearing this in mind, students also needed to design a space to strengthen the bid for hosting the Summer Olympic and Paralympic Games in 2040. In essence, Cape Town 2040 and Our Future Cities invited the entrants to create a conceptual and functional design for a sports centre in Nantes Park, Athlone.

The objective was for the design to be a permanent, shared services structure that acts as a unifying, youth-oriented gathering space and a central welcoming point. As the heartbeat for the new urban sports park, it needs to link the sports facilities in the short term and the potential Olympic Games in 2040.

Special mention - Caesarstone top 9 finalist



# ATHLONE OLYMPIC URBAN SPORTS CENTRE



UNITY



IDENTITY



COMMUNITY

FINDING IDENTITY WITHIN UNITY TO CREATE HARMONY



NATURE



SPORT



REJUVINATE

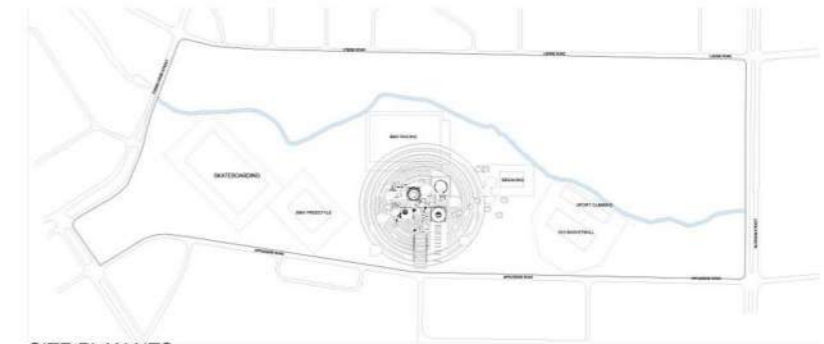
MAIN GATE ENTRANCE



SITE PLAN



PLAN NTS | 1. RESTAURANT 2. GYM & OFFICE. 3. COMMUNITY HALL  
4. RECEPTION. 5. SKATE BOWL



SITE PLAN NTS

**ATHLONE OLYMPIC URBAN SPORTS CENTRE KEY ELEMENTS:**

AIM | ENHANCE AND UPLIFT THE COMMUNITY.

FINGERPRINT | PATHWAYS FORM A FINGERPRINT. THE FINGERPRINT CONNECTS ALL THE STRUCTURES AND REPRESENTS THE COMMUNITY.

CIRCLE | AN IMPORTANT FEATURE USED IN EACH BUILDING. THIS CAPTURES THE SENSE OF STRENGTH AND TOGETHERNESS IN THE COMMUNITY AND UNITES IT AS ONE

UNITY | COMING TOGETHER AS ONE FOR THE OLYMPICS LEAVING A POSITIVE IMPACT IN THE COMMUNITY.



COMPETITION SUBMISSION BOARDS

## 03. HOUSE BENNETT

Design Time has been approached by two clients, Kim Gess and Mark Bennett from Knysna. Both clients have recently bought plots in Fernwood Private Estate (<https://fernwood-knysna.co.za/>) and they have asked YOU to design their new homes. You must select ONE of the briefs below. Your task is to design both the exterior and interior of the clients' new homes, keeping the architectural guidelines of the estate and the clients preferred look and feel in mind.



HOUSE BENNETT



HOUSE BENNETT

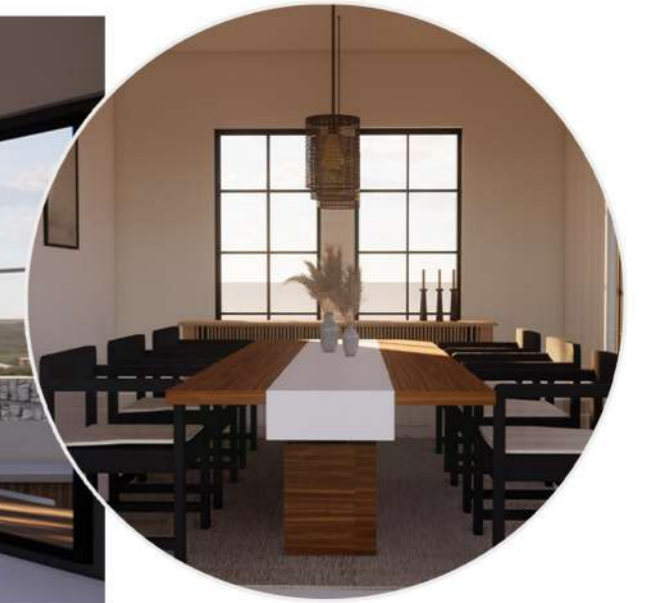




KITCHEN SEATING



ENTERTAINMENT AREAS



DINNING TABLE



LOUNGE



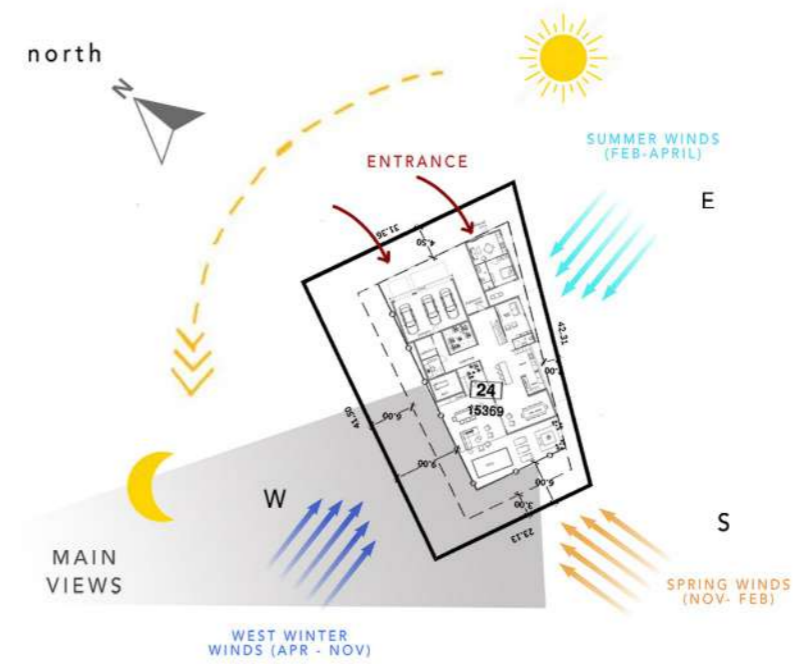
DINNING TABLE



KITCHEN



HOUSE BENNETT FLOOR PLAN  
NTS





FRONT VIEW



BACK VIEW



# 04. STAY UNIQUE

LUXURY IS THE LOCATION

## CONCEPT

Located in the Cederberg on a Wild Olive, Edenveld Farm, 5 pods are spread out to enjoy as much of the surrounding landscape as possible.

Guests can seclude themselves in the natural majestic rock mountains and delicate fynbos grown in the area.

The cabin's facade camouflages into nature with a light steel frame and solid dark timber cladding.

To contrast, the interior has a warm Scandinavian design, simple built in finishes and lighter birch timber cladding.

This Produces a holiday getaway that is cozy, luxurious, picturesque and all round a **UNIQUE STAY.**



ENTRANCE



BACK GARDEN



Wild Olive, Edenfeldt Farm, Cederbergs

STAY  
UNIQUE  
Elevation A  
1:50

Bonbon 2 Rechargeable, Portable table Lighting  
Osaka Round Table, Pedersen Lennard  
Kaku lighting range Weylands  
Arm table lamp Weylands  
Vogel Designs custom room divider

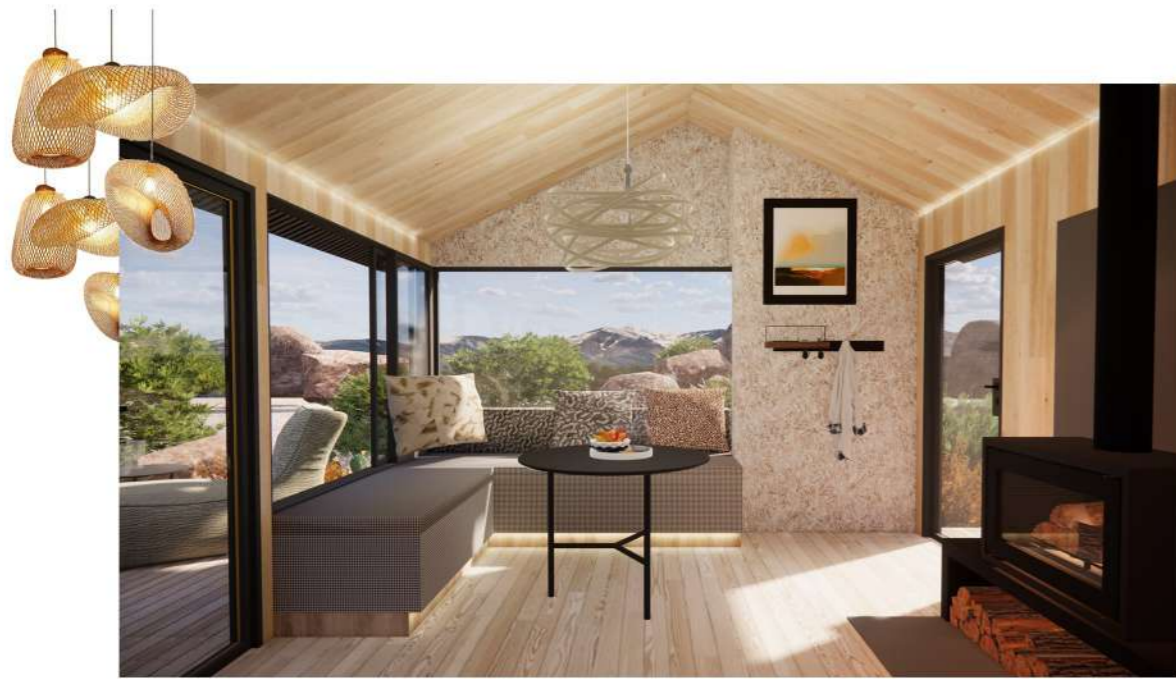
STAY  
UNIQUE  
Elevation B  
1:50

Italtile  
Franke Sirius Carbon Black sink  
Tivoli Vincenza Sink mixer  
SIBO wall hung toilet  
Geberit dual flush  
Bathroom Butler holder  
Meir mounted basin spout  
Villeroy and Boch top basin  
Meir round shower head  
SMEG kettle



STAY  
UNIQUE  
Floor plan 1:50





ENTRANCE



BEDROOM



BATHROOM

# 05.

## ON Q APARTMENT

Brief

Design your dream apartment .

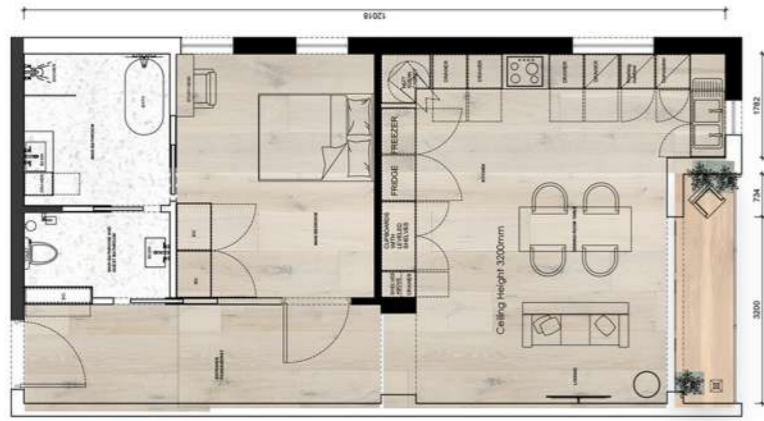


ENTRANCE

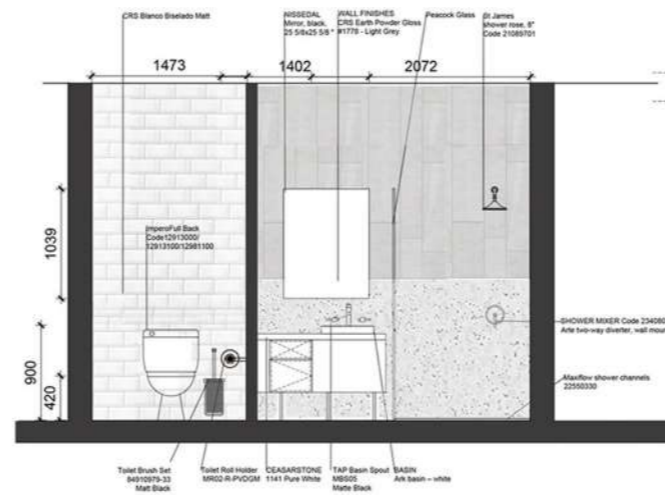


LOUNGE

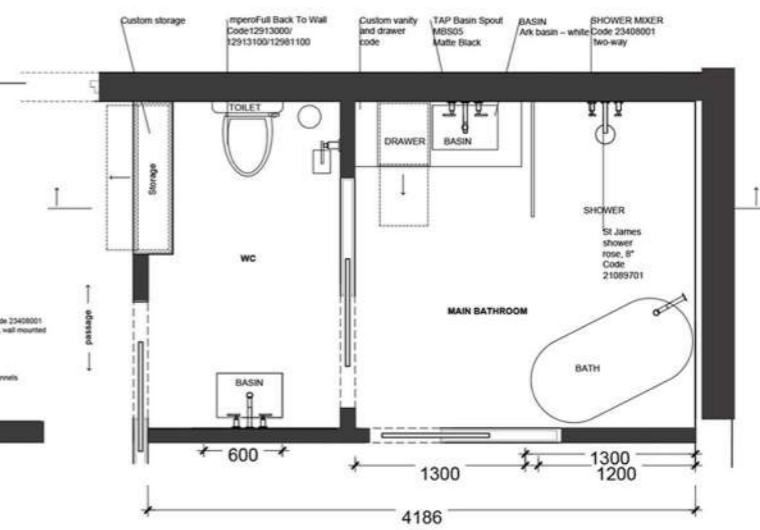




ON Q | APARTMENT 602  
FLOOR PLAN  
SCALE 1:50



ON Q | APARTMENT 602  
BATHROOM ELEVATION AA  
SCALE 1:25



ON Q | APARTMENT 602  
BATHROOM FLOOR PLAN  
SCALE 1:25



KITCHEN



PASSAGE



BEDROOM



BATHROOM

# 06.

## BARNETT FAIR

### Client Brief

To redesign and refresh the interior space of Barnett Fair Barbershop.

- To assist in repositioning and upliftment of the overall brand by redesigning the look and feel of the space

Barnet Fair barber shop is located on 98 Bree Street Cape

Town. The shop sits under a St Stevens church. They are both

heritage sites. The Church was originally a theatre then later

became a church. By redesigning Barnett Fair within it being

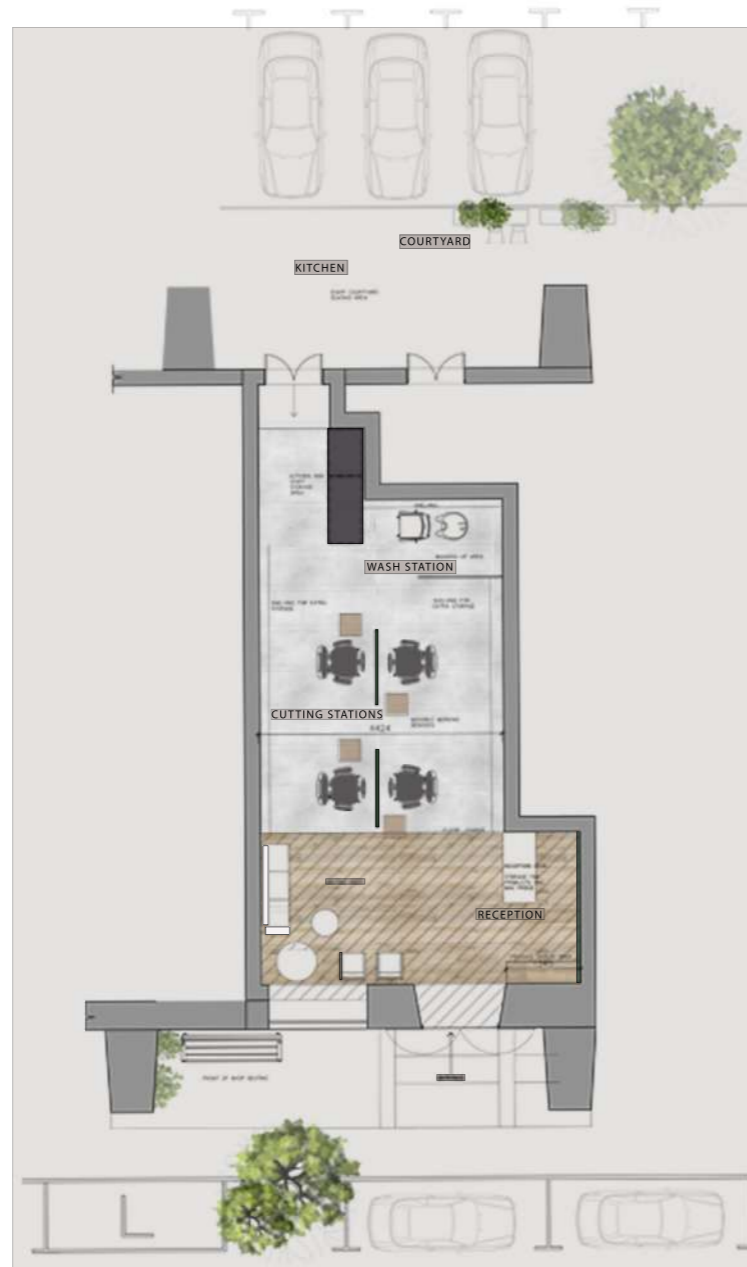
a heritage site. My objective is to convey the period of history

in a fresh new way.

I am presenting a small look back in time within a new era.



FIRST IMPRESSION OF BARNET FAIR



BARNET FAIR LAYOUT PLAN  
SCALE 1:50



ENTRANCE





WAITING AREA



WASH UP BASIN PERSPECTIVE

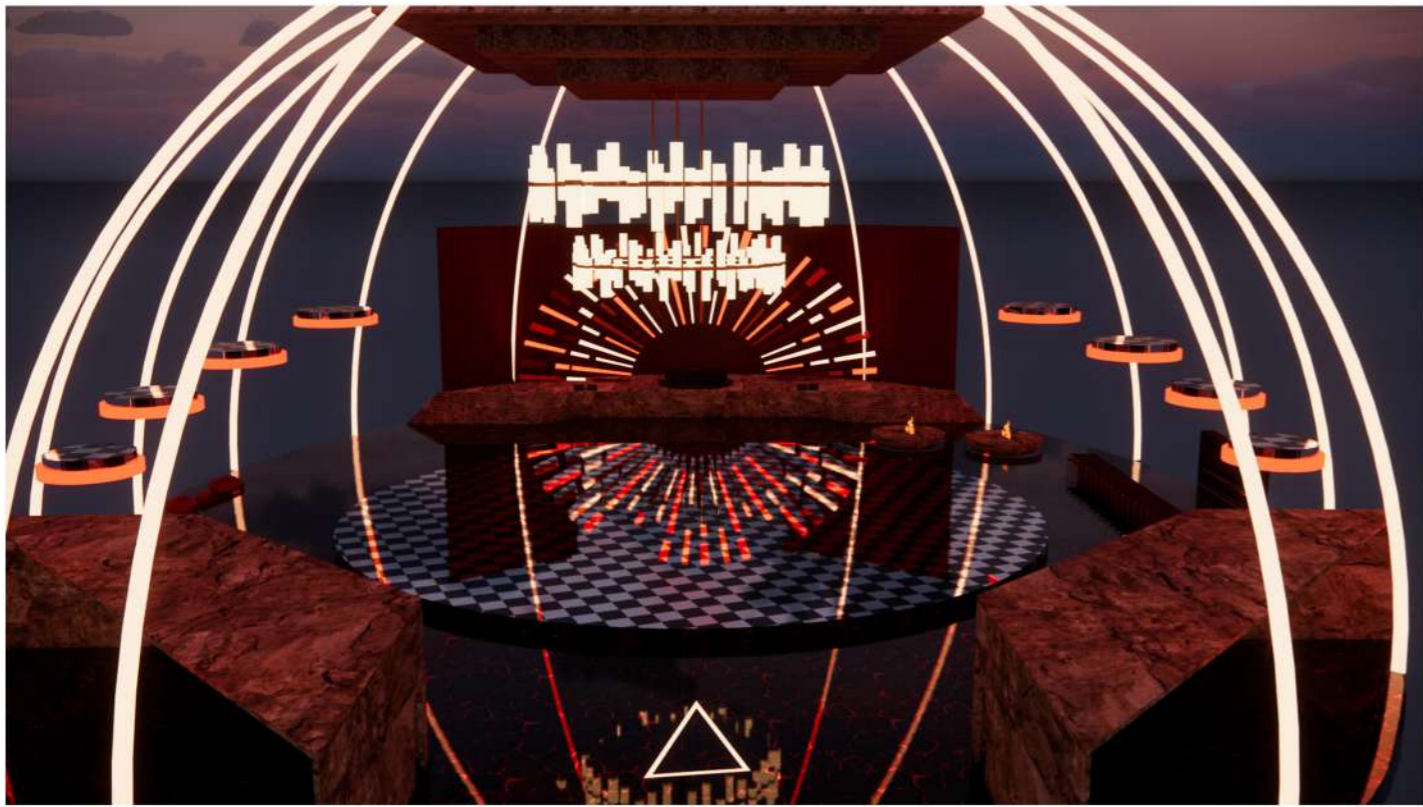
# 07. METAVERSE GROUP PROJECT

## BRIEF

Students will collaborate in groups to design a virtual adult nightclub within the metaverse using AI-generated imagery. This project challenges students to fuse traditional interior design principles with new age technology.



NIGHTCLUB FACADE



FIRE LEVEL



WATER LEVEL



EARTH LEVEL



AIR LEVEL

# 09.

PRODUCT DESIGN

# RE-5



RE-5 ANGLED VIEW

A REVIVAL OF THE 5's

reduce, reuse, recycle, re-purpose, and refuse

Special mention : Featured design at DECOREX 2023

## STORY

THE CLIMATE CRISIS OUR PLANET IS FACING HAS PUT US UNDER PRESSURE AND A NEED FOR SUSTAINABILITY HAS BECOME VITAL.

WITH MY DESIGN I WANT TO BRING AWARENESS TO ONE OF THE PROBLEMS CONTRIBUTING TO THIS CRISIS WHICH IS THE FASHION INDUSTRY.

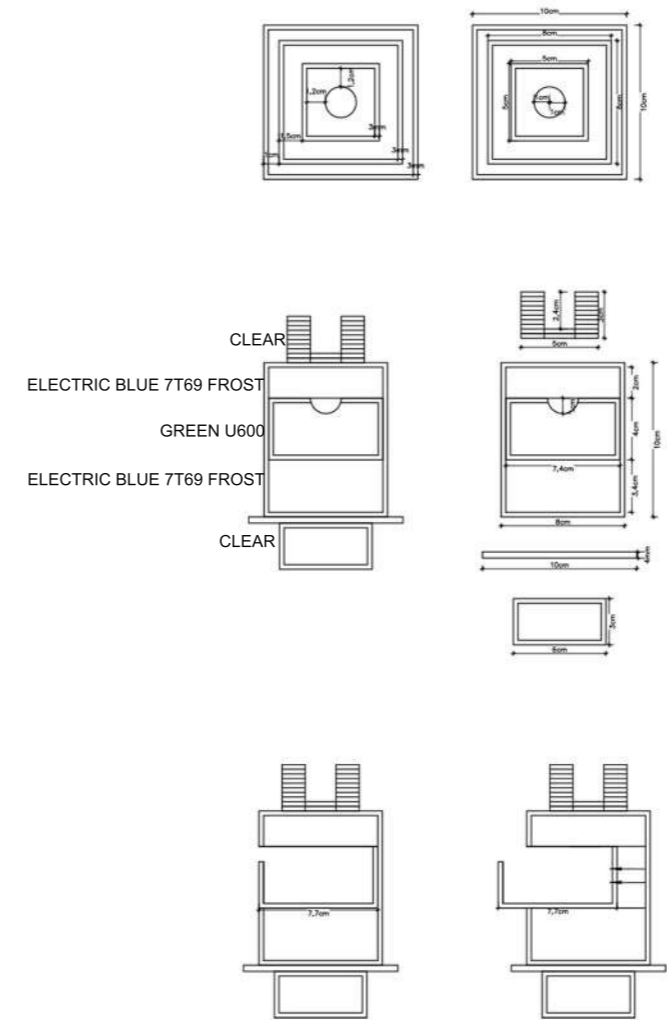
THE FASHION INDUSTRY PRODUCES 10% OF THE WORLD'S CARBON EMISSIONS AND IS THE SECOND LARGEST CONSUMER OF THE PLANET'S WATER SUPPLY.

MY DESIGN USES WASTE TEXTILES AND



### OBJECT DESIGN 2023

The challenge is to design a candlestick holder / vase using Acrylic/Perspex. The candlestick holder I have designed is multi-functional. The design is used to hold a candlestick as well as houses the matches used to light the candle. The matches are stored in a drawer that is placed in the middle of the design. This makes the design have a beautiful form as well as being functional.







COMPLETED DESIGN



# 10.

## PHOTOGRAPHY

LOCATION - The Winchester Hotel



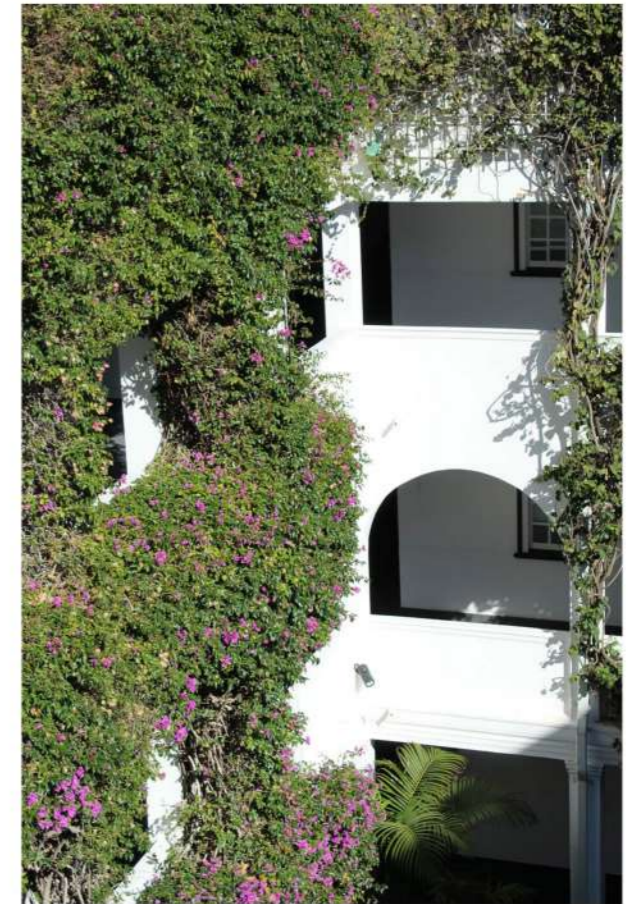
PORTRAIT B+W



PORTRAIT



INTERIOR



EXTERIOR

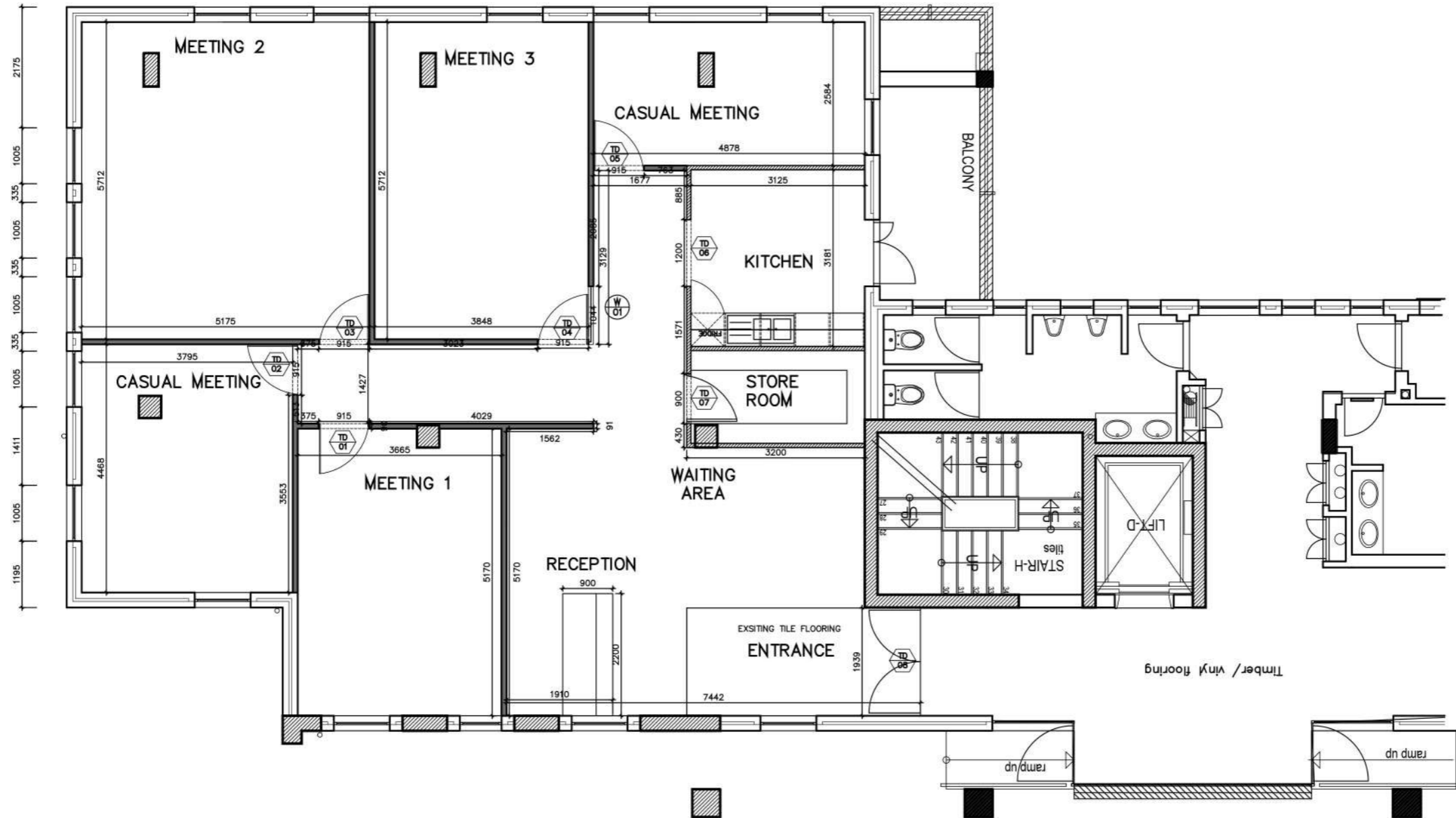
# 10.

CAD WORKING DRAWINGS

GENERAL LAYOUT



NEW MEETING ROOMS  
OPTION 2  
SCALE 1:50

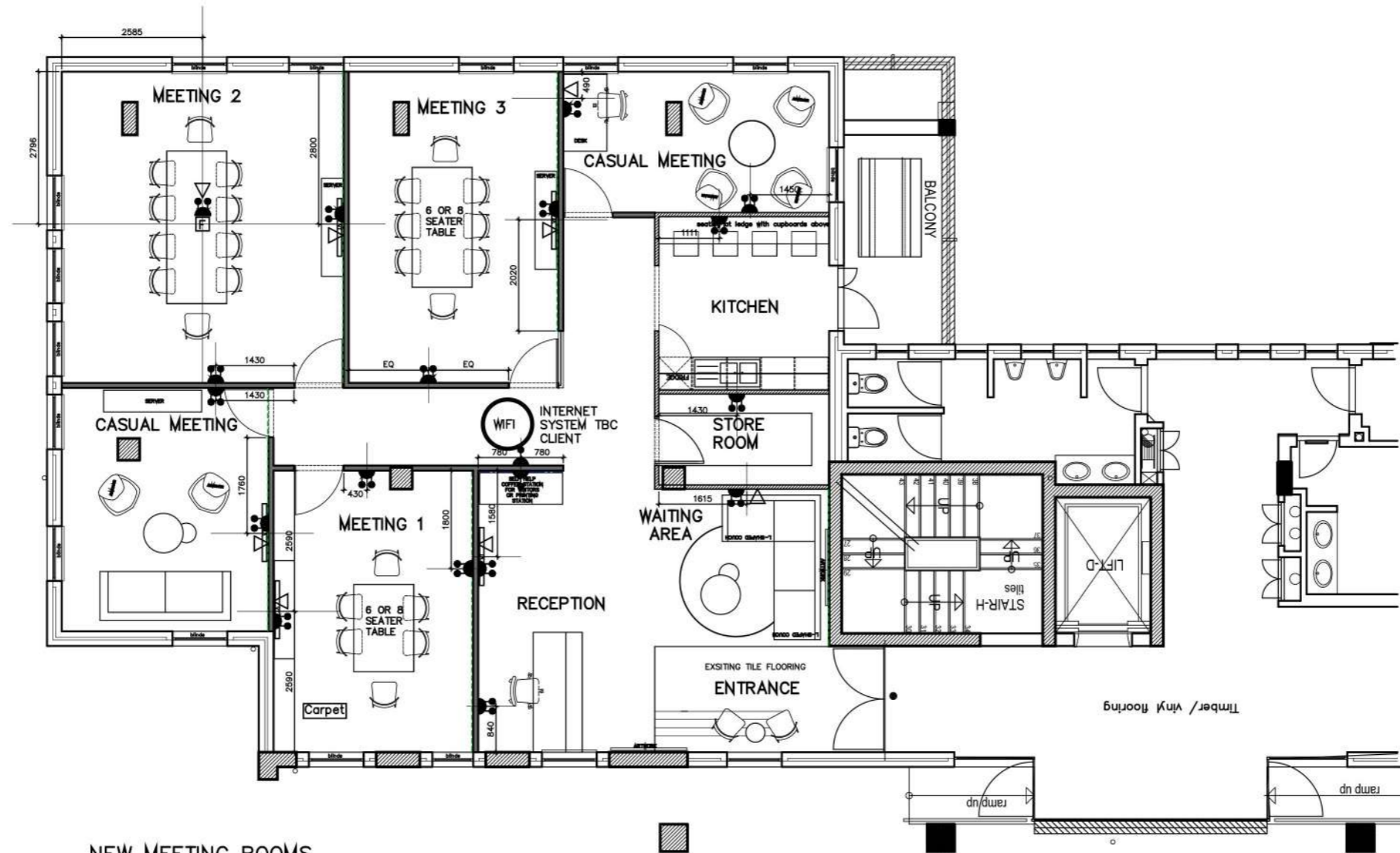


NEW MEETING ROOMS  
 OPTION 2  
 SCALE 1:50

 NEW 90mm DRYWALL with Insulation as per Spec. below

 NEW 90mm DRYWALL up to 1600mm in height as per spec. below.

DATA AND ELECTRICAL








NEW MEETING ROOMS  
OPTION 2  
SCALE 1:50

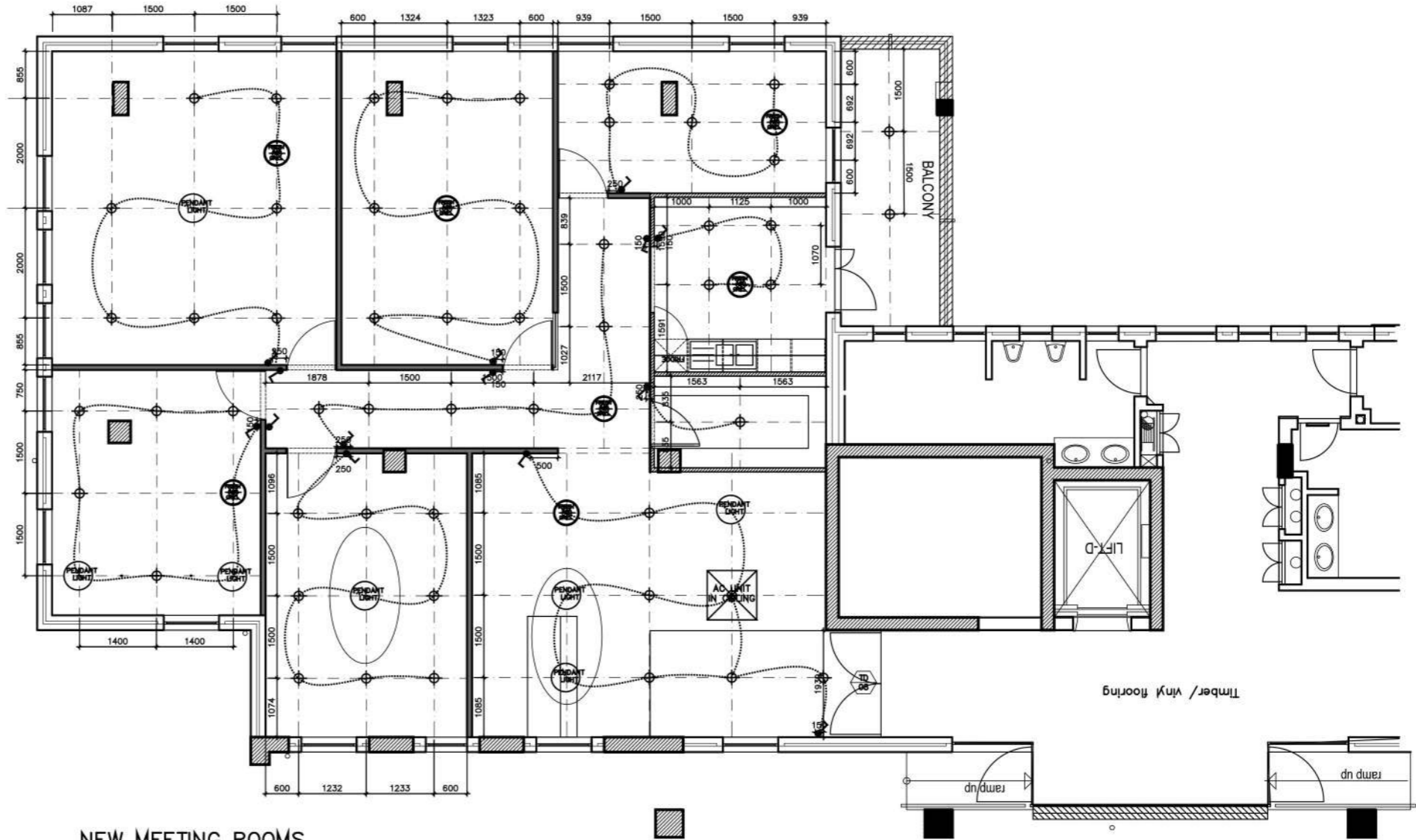
ELECTRICAL OUTLET LEGEND:

	16A Double Switched Socket		Data Point	NOTE: ALL PLUGS TO BE 300mm
	16A Single Switched Socket		Telephone Point	
	Bell at front entrance with motion sensor		power skirting	
	100mm x 100mm Floor box as per spec			

LIGHTING

LIGHTING LEGEND:

	LED White down light Juno®5"/6" LED Retrofit Downlight, Switchable White (2700-5000K), 840 Lumens		Cassette unit in ceiling
	Switch Spec: WHITE SWITCH AND COVERPLATE		Fresh air grill TBC ENGINEER
	Pendant light from Hoi Ploy Molecule4		

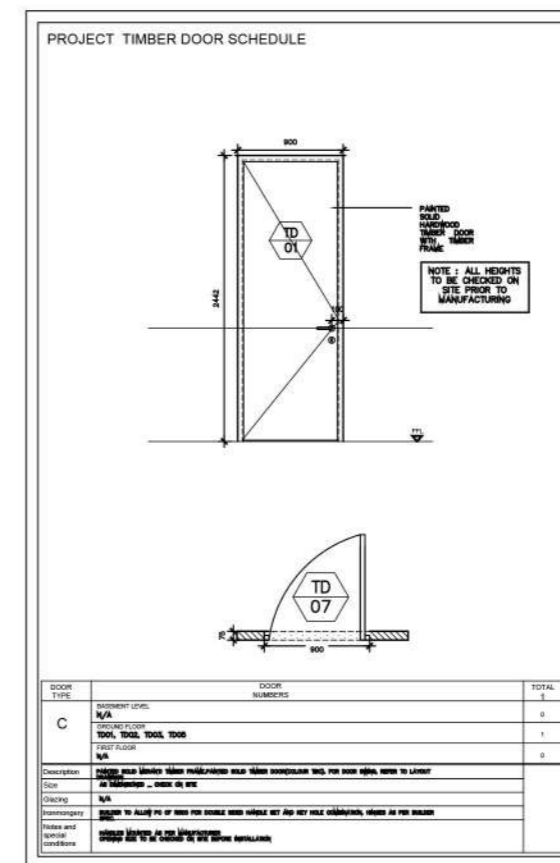
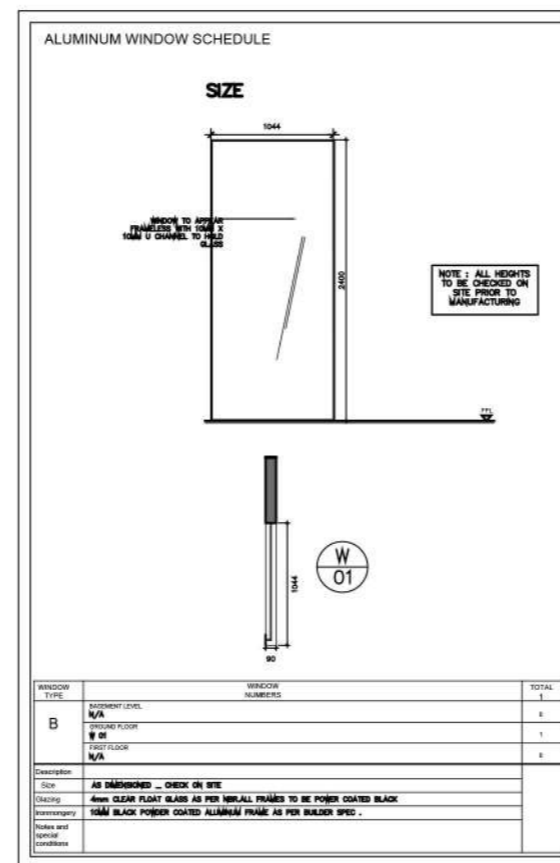
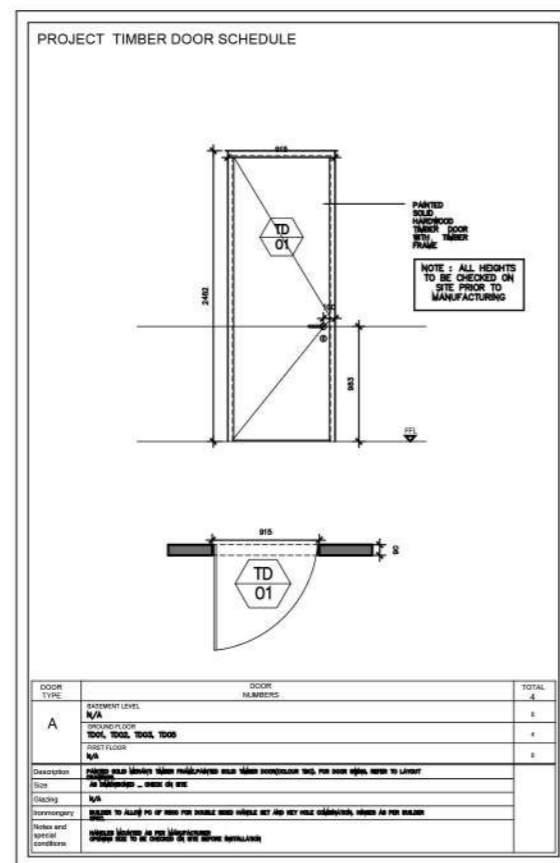


NEW MEETING ROOMS  
OPTION 2  
SCALE 1:50





DOOR AND WINDOW SCHEDULE



THANK YOU!

SEE YOU SOON