

# ANNABELLE BROWN

INTERIOR ARCHITECTURAL DESIGN PORTFOLIO

DESIGN TIME | DIPLOMA | 2023-2025



<b>01</b>	RESORT
<b>02</b>	RESTAURANT DESIGN
<b>03</b>	RESIDENTIAL DESIGN
<b>04</b>	KITCHEN DESIGN
<b>05</b>	RETAIL DESIGN
<b>06</b>	CAESARSTONE
<b>07</b>	SERVER TABLE DESIGN
<b>08</b>	SCREEN DESIGN
<b>09</b>	PLANTER DESIGN
<b>10</b>	SIDE TABLE DESIGN
<b>11</b>	TECHNICALS



## RESORT DESIGN

### **Nacre-**

Named after the iridescent inner layer of shells, NACRE is a resort inspired by the shimmering beauty of abalone, found along the Cape coastline.

From the outside, abalone appears rugged and weathered, protective against the ocean's force, yet within, it reveals a dazzling spectrum of shifting colours: blues, greens, violets, and silvers that seem to hold light itself. The architecture of Nacre reflects this duality. Exteriors echo the strength and raw texture of the shell, grounding the resort in Scarborough's natural landscape.

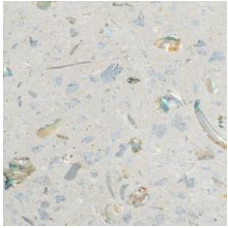
Interiors, however, shimmer with the fluid, reflective hues of abalone, creating immersive spaces that shift with light and mood.

Each room is designed as a chamber of colours and atmosphere, inviting discovery and renewal.

Guests are at the heart of this vision: just as abalone transforms light into brilliance, Nacre transforms rest into radiance. The resort becomes a sanctuary of replenishment, where visitors leave restored, luminous, and deeply connected to the rhythm of the ocean.



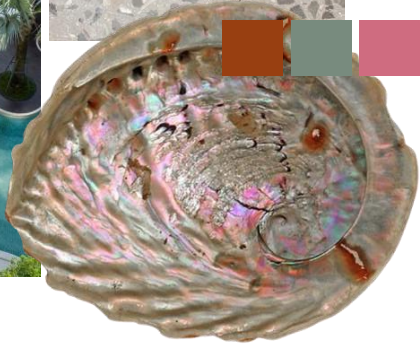
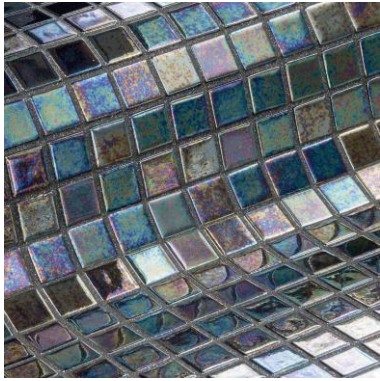














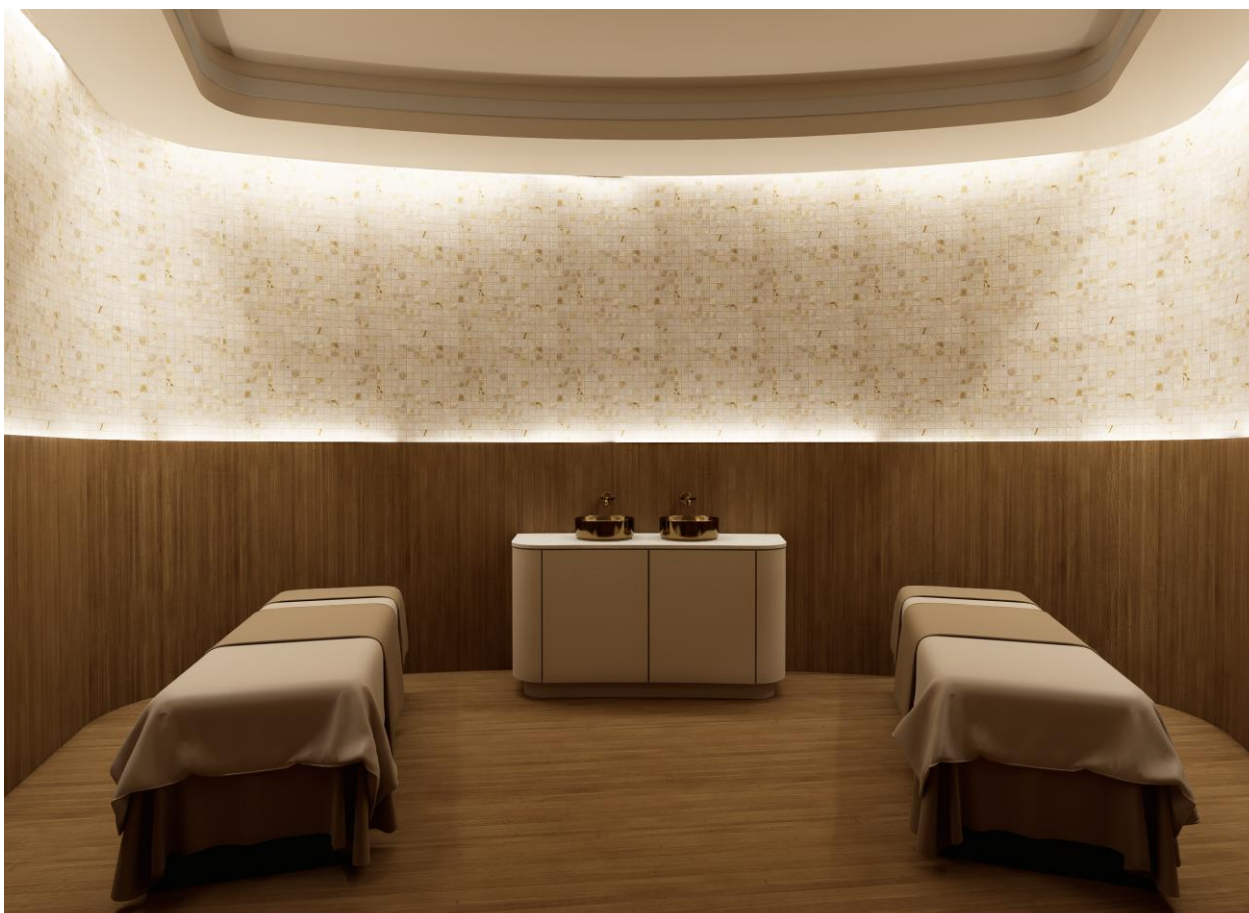




































## GMUNDER RESTAURANT DESIGN

### GNAMMA-

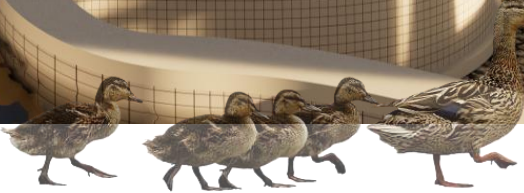
a natural hole in a rock in which rainwater collects

is a design concept rooted in the intentional tension between opposites, fire and stillness, rawness and refinement, wilderness and craft. It draws from the elemental landscape of Namibia and the heritage of Austrian ceramics to create a space that feels both grounded and elevated.

This restaurant becomes a place of quiet ritual, where open-fire cooking honors the primal, and curated table settings using Gmundner's Green Flamed ceramics celebrate the art of making. The architecture and interiors are shaped by contrasts: curved whitewashed walls soften blackened steel, raw oak sits beside smooth ceramic glaze, and the sound of running water cuts through the dry desert air.

Sacred Contrast seeks not to decorate, but to distill, creating a layered, soulful space where every material, texture and moment feels deliberate, timeless and quietly powerful.

















## RESIDENTIAL DESIGN

### CEST SI BON / Villa Soleil

#### FIBERS

"Inspired by the intricate textures and organic forms of Camps Bay's natural landscape, this home celebrates the beauty of fibers in all their forms. From the stone that anchors the building to the ground, to the delicate shells that scatter the beach, and the soft cotton grasses that sway in the breeze, every element of this design is woven together by the thread of fiber.

Linen, hemp, and wool, all sourced from local, sustainable suppliers, are used throughout the interior to create a warm, tactile atmosphere that echoes the natural world. This home is a testament to the enduring beauty of fibers, and the ways in which they can be woven together to create a rich, textured tapestry that reflects the stunning natural surroundings of Camps Bay."



















## KITCHEN DESIGN

### KSA COMPETITION

I was asked to redesign a family kitchen that, while functional, lacked practicality and flow. The clients wanted to transform it into a modern, open-plan space that connects the kitchen and lounge, encouraging cooking, socializing, and family interaction.

They envisioned a warm, contemporary aesthetic with dark grey and natural wood finishes, earthy tones, and abundant natural light. A feature island was essential, ideally two if space allowed, to serve as both a social and functional centerpiece.

The brief also included converting the existing carport into a combined scullery and laundry area, maintaining a total renovation budget of R250,000 including countertops.







## RETAIL DESIGN

### MAX ON TOP COMPETITION GROUP PROJECT

#### THE RED ONYX Vega Vita

A mesmerizing gemstone, the red onyx is formed over thousands, sometimes millions of years. As silica-rich water flows through rocks and cavities, it deposits delicate layers of minerals, slowly creating the distinctive banded patterns we admire today.

Onyx has long been admired for its mystical properties, believed to offer protection and strength to those who wear it. This symbolism is what inspired us.

We sought to craft a space imbued with magic, layering textures and patterns just as nature does with onyx over time. The deep red marble texture woven throughout our space mirrors the essence of this extraordinary stone. To enhance the experience, we thoughtfully divided the store into two distinct areas: one dedicated to trying on exquisite jewellery, and the other designed to showcase their brilliance. The softly arched passageways create a tunnel-like effect, evoking a sense of curiosity, just as the natural bands of onyx reveal hidden depths.

Then there is Vega Vitae, the name of our store.

Vega, Latin for "star," reflects the celestial and mystical qualities of crystals, while Vitae, meaning "life," embodies our brand's focus on vitality and energy. Together, they form a name that captures the essence of beauty, power, and wonder.





















## CAESARSTONE 2024 TOP 5 IN HOUSE

### MAROLELOKO

"The place of language."

An immersive destination celebrating Africa's linguistic and cultural richness.

The journey begins through a tunnel leading to a waterfall, symbolizing the source of language and human connection. From there, visitors follow a winding "river" of languages that reveals the continent's diverse voices and traditions.

The first floor features a dramatic, stone-clad space anchored by the waterfall, while the upper level unfolds into a bright, interactive landscape of words, stories, and art. Surrounded by indigenous planting and a serene restaurant, MAROLELOKO offers a holistic experience uniting nature, culture, and the shared evolution of communication.

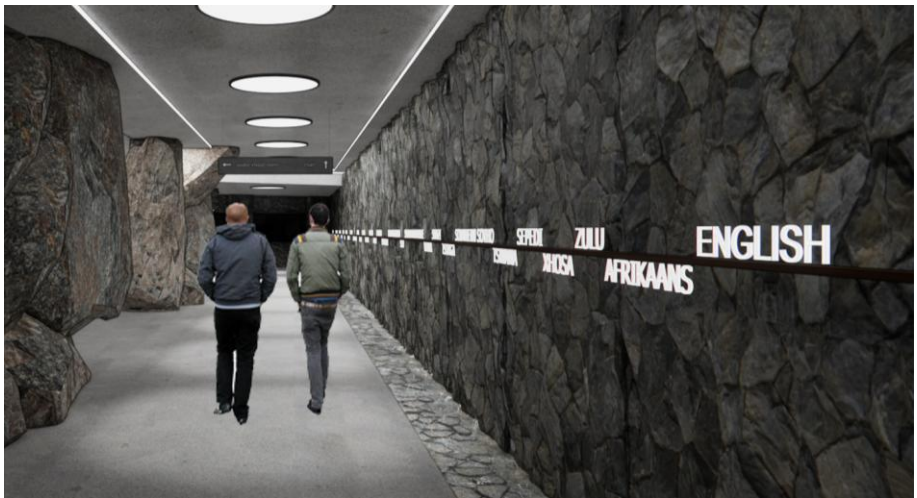
















## PRODUCT DESIGN

### SERVER TABLE RIPPLE

This server table captures the essence of South Africa's Western Cape mountains. Its tinted, mottled glass reflects the warm amber tones of mountain tea water, while the brass detailing mirrors the rugged texture of rocky peaks, creating a functional statement piece.











## PRODUCT DESIGN NANDOS DREAM SCREEN 2024

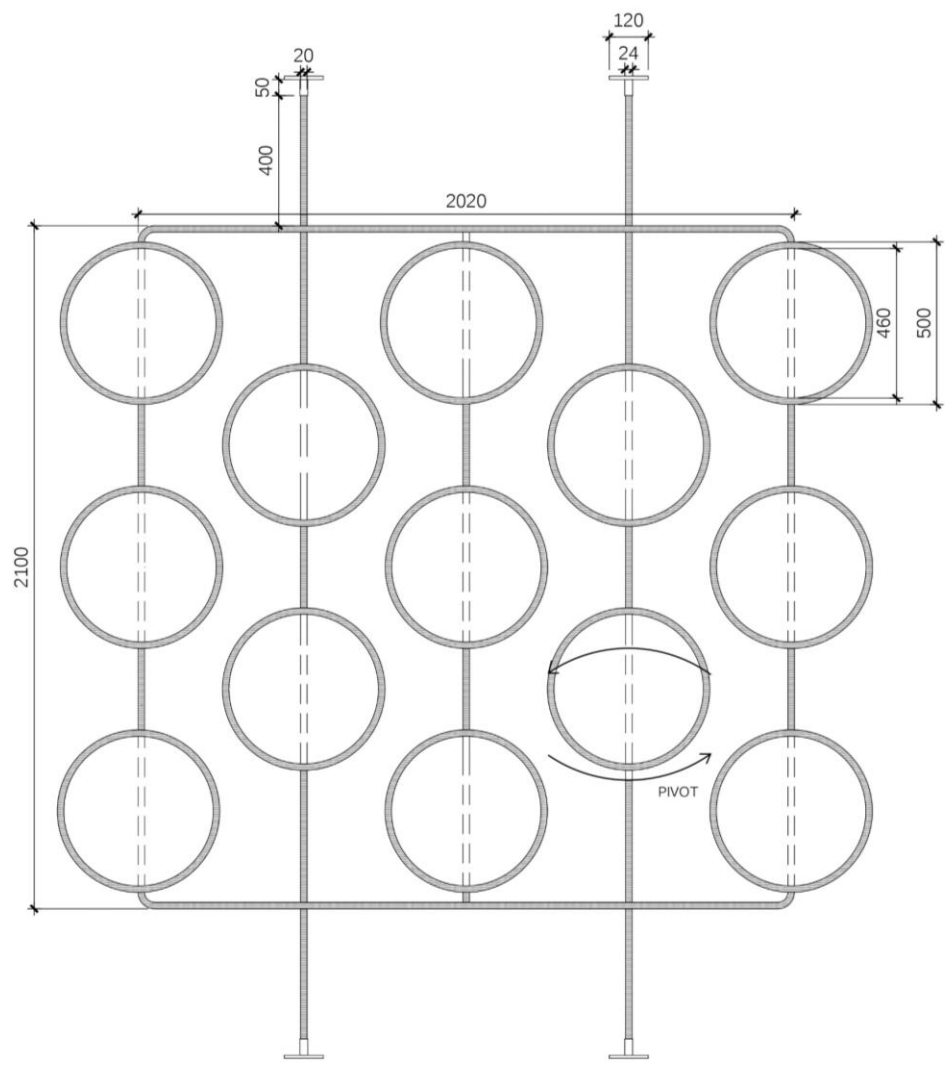
### Rattan Rouge

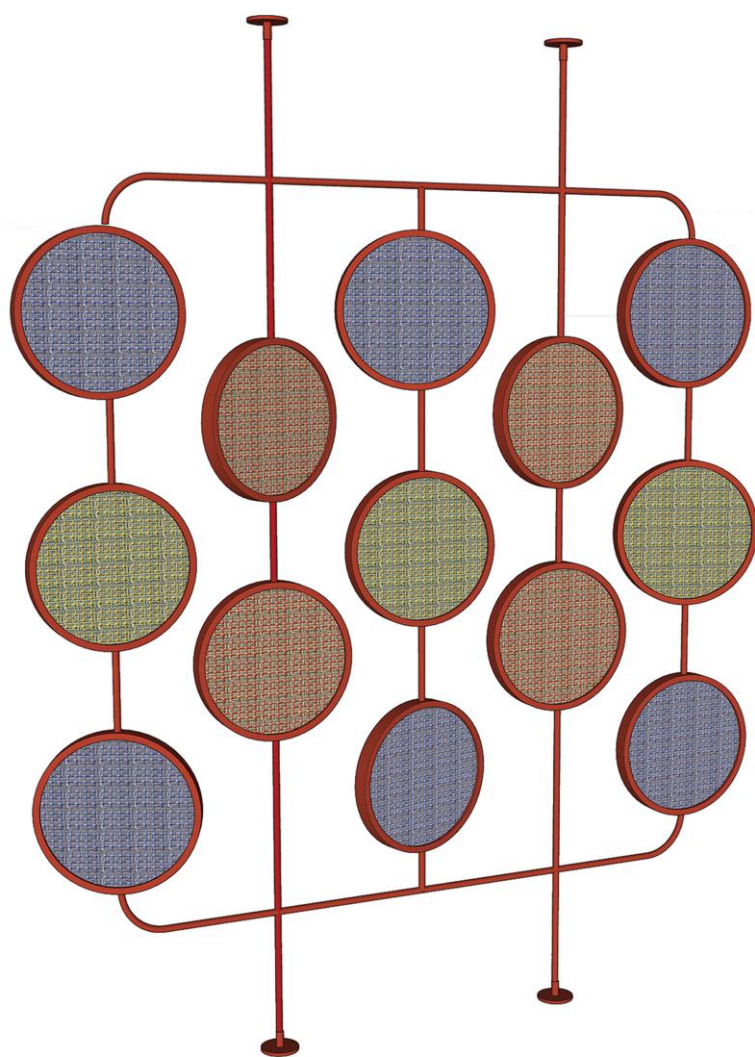
The 5th edition of the Nando's Hot Young Designer (HYD) business accelerator invites participants to design a distinctive screen, a defining feature in every Nando's restaurant. Managed by Clout/SA on behalf of Nando's, this initiative nurtures South Africa's emerging design talent, positioning local creativity on the global stage.

"Rattan Rouge" is a minimalist yet expressive room divider inspired by the craftsmanship of Zulu and Xhosa artisans. Its vibrant red, blue, and green rattan panels celebrate heritage while reimagining tradition through modern design. Supported by a sleek, powder-coated red steel frame with curved edges, the 2100mm x 2020mm screen offers both beauty and stability. Symbolizing the connection between tradition and innovation, Rattan Rouge bridges past and present. *honoring the past, dividing the present.*











TOP 10 FINALISTS . TOP 10

**Annabelle Brown**

21 years old from Vredehoek, Cape Town



**NANDO'S**  
**MYD 2024**

*screen  
dream*

FINALISTS . TOP 10 FINALISTS .

FINALISTS . TOP 10 FINALISTS .

TOP 10 FINALISTS . TOP 10

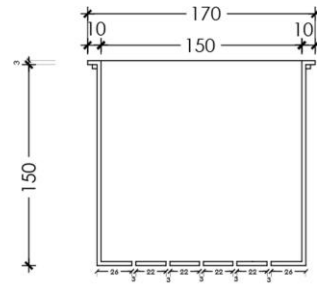
## PRODUCT DESIGN

### PERSPEX OBJECT SELF-WATERING PLANTER

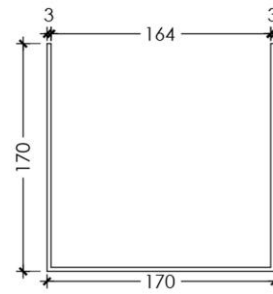
I designed a self-watering planter using 51255 (frosted light green) and matt black Perspex from maizey Perspex. The planter has 2 compartments: one for the water storage and the other for the plant itself.

The purpose of this self-watering planter is to be a convenient way to keep your plants alive without over watering and under watering. The carbon is an essential part of the planter as it maintains optimal water flow in the system and, reduces algae growth, it increases oxygen levels in the water, promoting root growth and microbial activity, it also helps purify the water and helps stabilize the PH levels in the water.

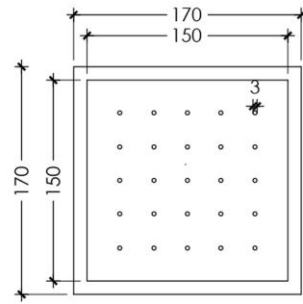




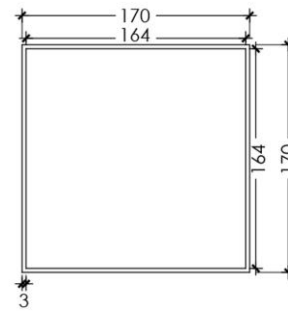
PART ONE SECTION



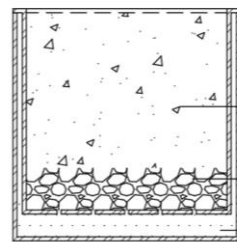
PART TWO SECTION



PART ONE TOP VIEW



PART TWO SECTION TOP VIEW



SECTION CUT

PERSPEX

SOIL (SUPPLIED  
AFTERWARDS)

STONE (SUPPLIED  
AFTERWARDS)

WATER

NOTE:

SILICONE STOPPERS 8X2 WILL BE  
ADDED TO THE BOTTOM OF THE  
PLANT POT





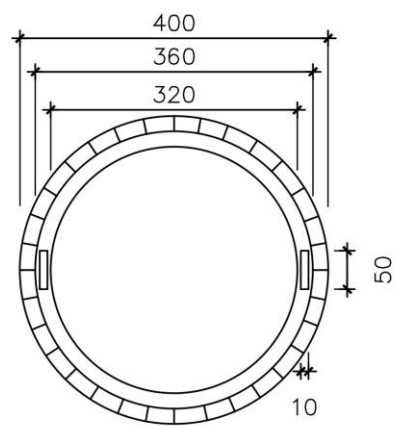
## PRODUCT DESIGN

### **Always Welcome Competition MULTI-FUNCTIONAL SERVER TABLE**

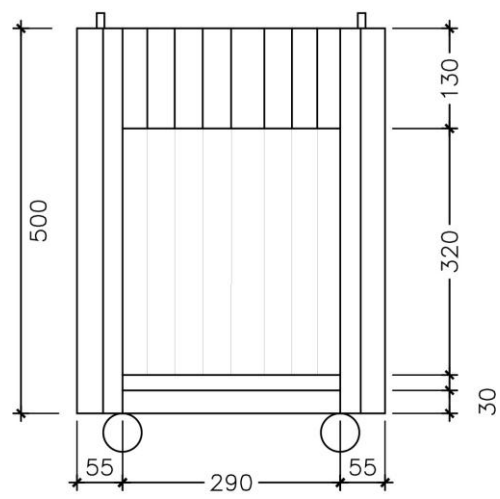
Inspired by the restoration of Muizenberg's iconic colorful beach huts, the Always Welcome "HUT" design competition invited African designers to reimagine salvaged timber into functional, limited-edition pieces. The CozyCorner Side Table embodies this spirit of creativity and sustainability.

Crafted from reclaimed wood, it features a removable built-in coffee tray that seamlessly transforms from a stylish table for your morning brew to a functional side table for decor or essentials. Beneath, a cozy pet bed offers a warm retreat for small companions, keeping them close to the heart of home life.

Merging practicality, comfort, and thoughtful design, the CozyCorner Side Table celebrates connection, sustainability, and the joyful character of the Muizenberg huts, turning every corner into a shared sanctuary for people and pets alike.



TOP VIEW  
NTS



FRONT VIEW  
NTS

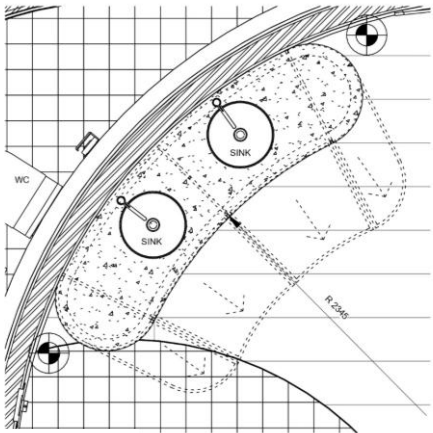
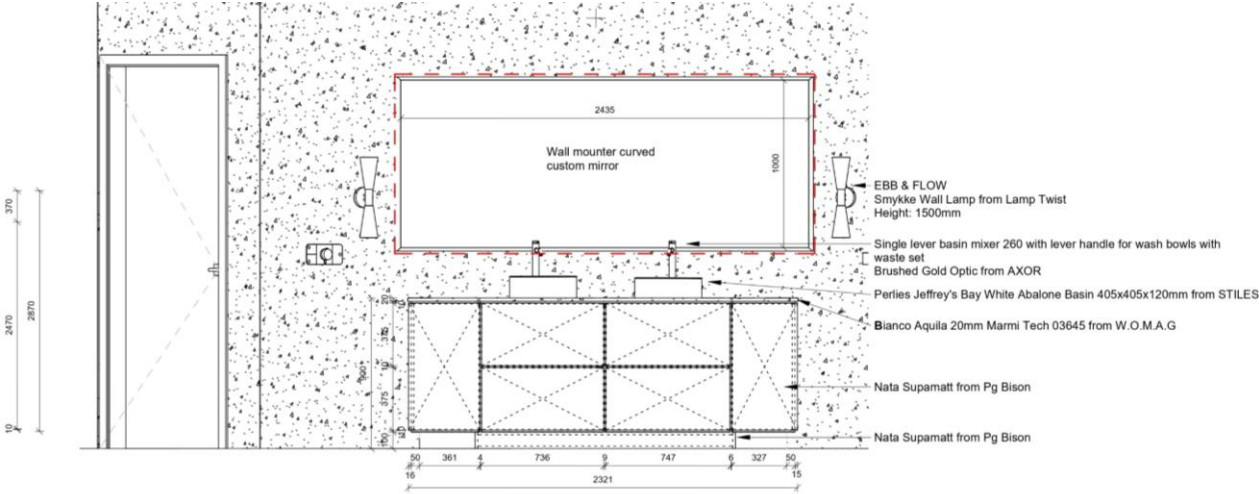




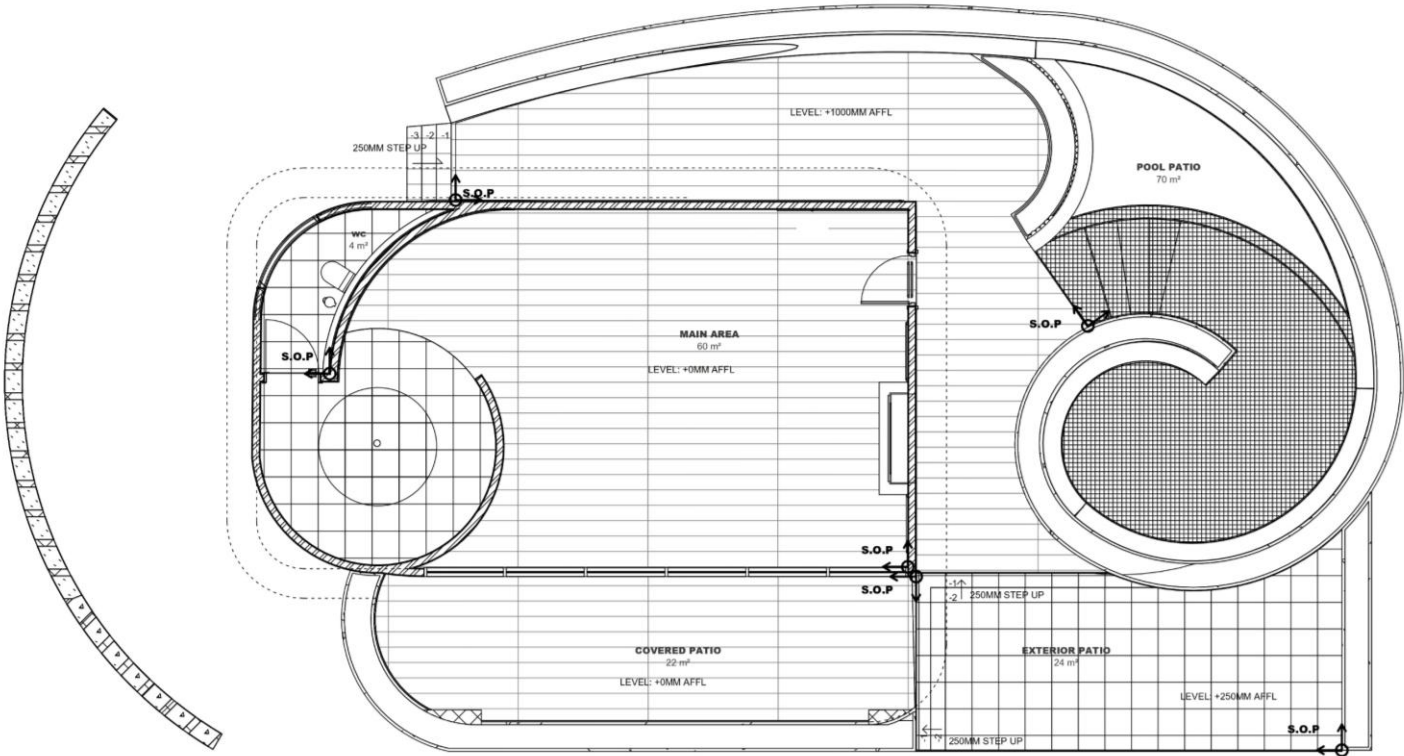
## TECHNICAL DRAWINGS



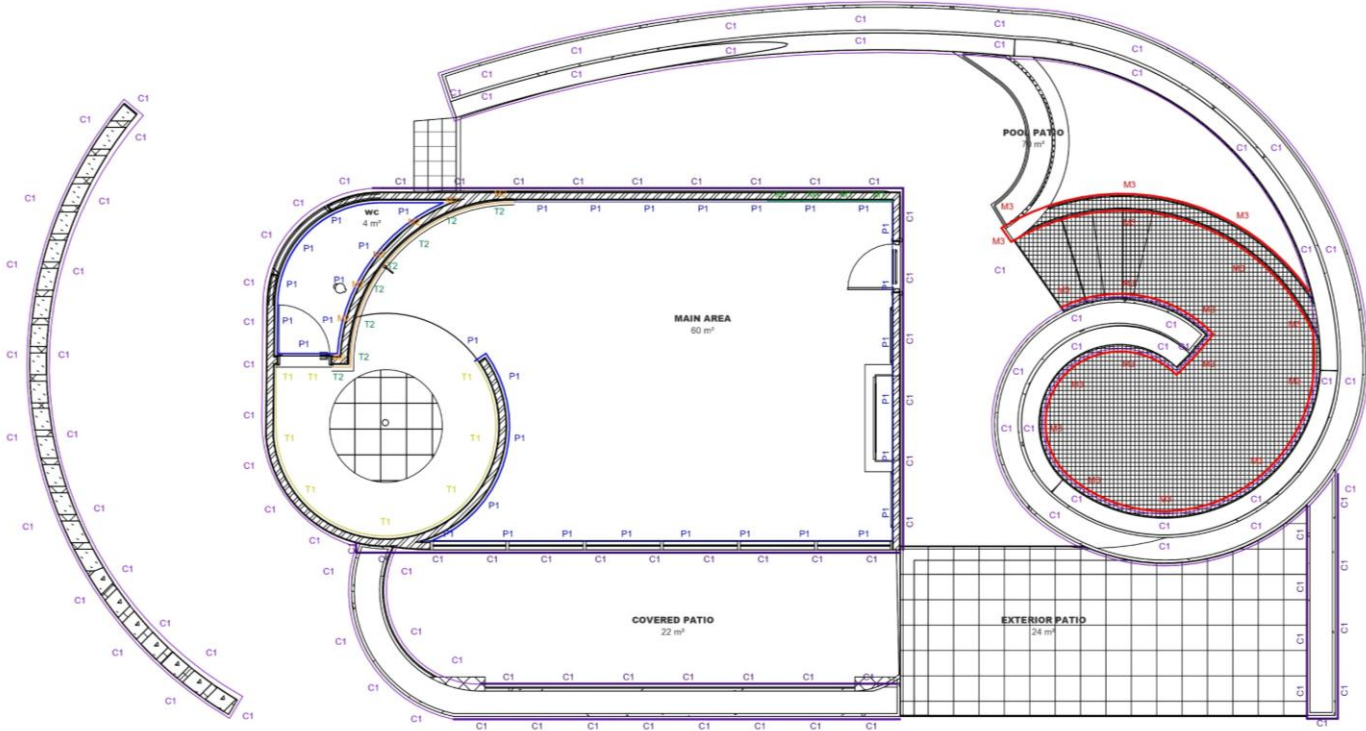




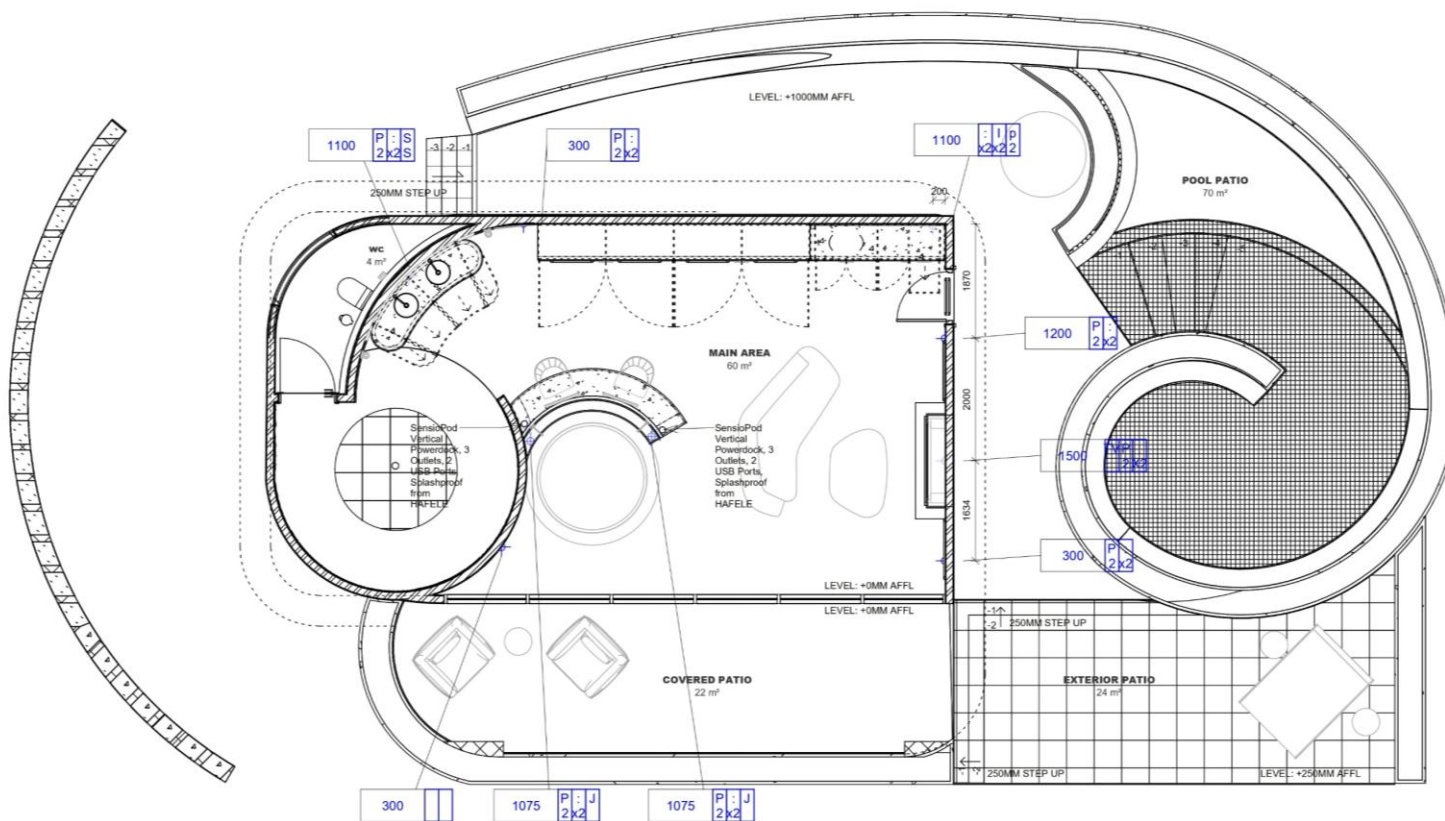




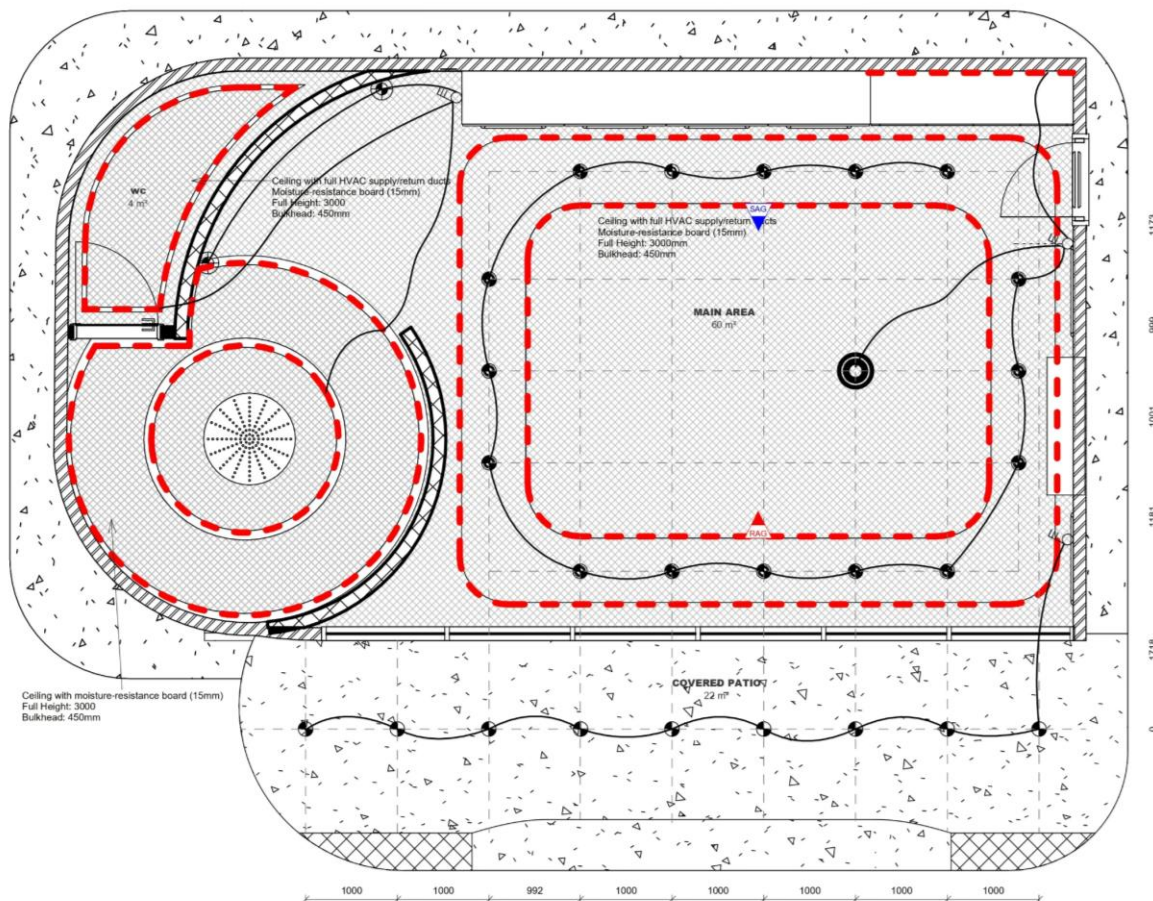
FLOOR FINISHES LEGEND	
FLOOR FINISH	
	<b>Timber Flooring</b> Crudo Living   Oggie Flooring   White uv oil   47.859m²
	<b>Timber Decking</b> Name   RareWoods   finish   67.885m²
	<b>Mosaic Pool Flooring</b> Perla 25 Idescent collection   ezant   19.667m²
	<b>Tiled Flooring</b> Tuscania Ceramiche Etna Beige Slip Resistant Rectified STILES   Slip Resistant   16.4m²
	<b>Exterior Tile Flooring</b> Nacre Polished Concrete Paver with Blackstone- Colour   Cape Stones   Polished   24m²
FLOOR FINISHES NOTES	
All finishes to comply with SANS 10400.	
Dimensions shown for reference only. Contractor to verify on site.	
All finishes to align with FFL + level benchmarks as indicated on drawings.	
Where two materials meet, provide transition strip or threshold detail.	
Maintain falls in wet areas: Min. 1:60 to drain (SANS guidance)	
Waterproofing required to wet areas up walls 150mm min behind finishes.	
All external floor finishes & wet area floor finishes to have anti-slip finish.	
All materials to be approved by Client prior to procurement.	



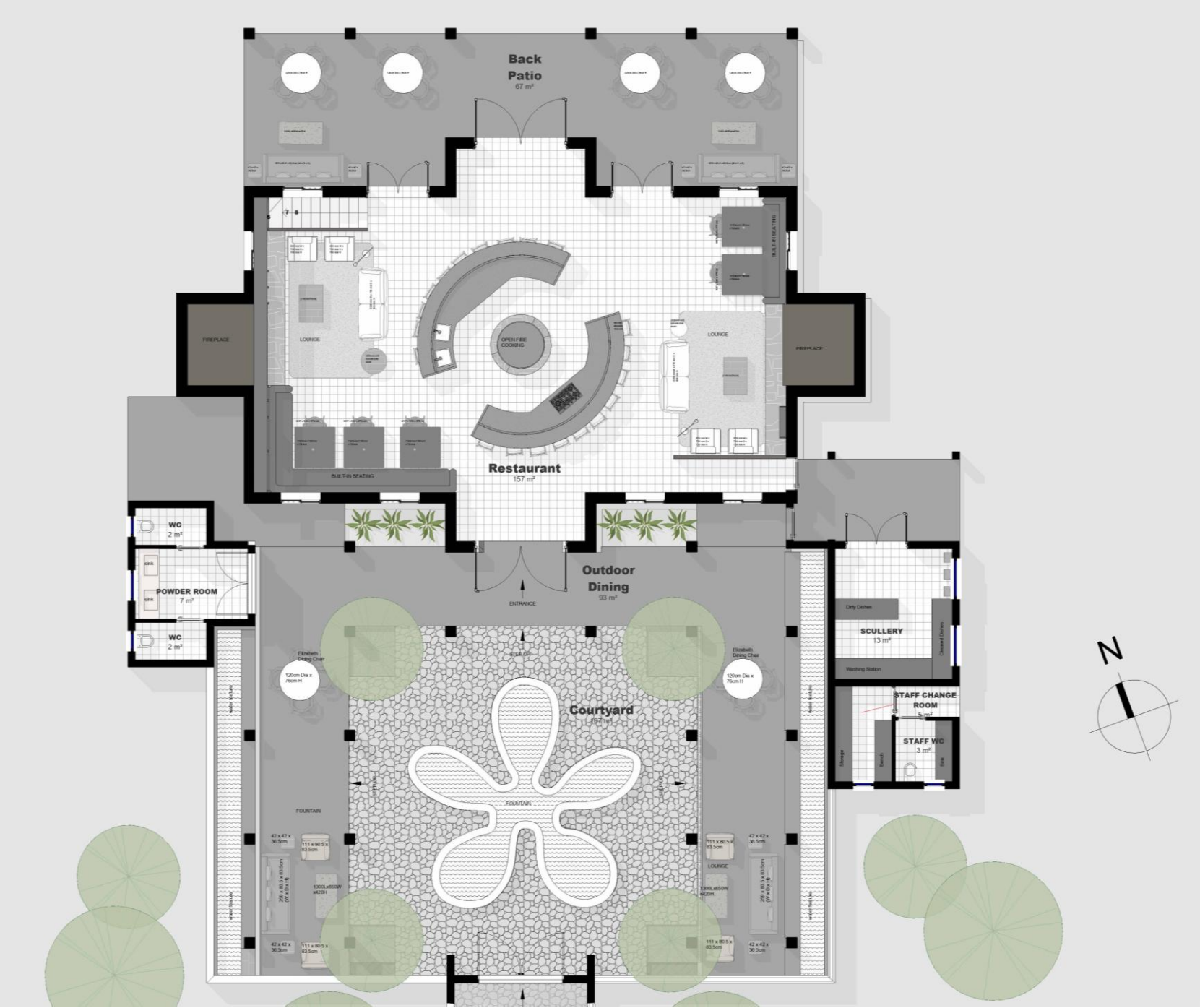
WALL FINISHES LEGEND	
MOSAIC	
	<b>Gold Mosaic:</b> JH-P8 Shell Mosaic   Union Tiles   300x300mm
	<b>Blue Mosaic:</b> JH-P19 Shell Mosaic   Union Tiles   300x300mm
	<b>Pool Mosaic:</b> Perla 25 Idescent Collection   Ezant   25mm format
Paint	
	<b>Beige Paint:</b> Cotton Breeze   56YY 87/037   Dulux
Concrete	
	<b>CONCRETE:</b> Rough textured Concrete   Cape Concrete   Exposed Aggregate   Beige Pigmented
Tile	
	<b>Tile:</b> Urano Linear 30x60 Ivory   Distribution Supplies LTD   MATT
	<b>Tile:</b> Labradorite Maximum   Studio Masson
GENERAL NOTES	
All wall finishes to comply with SANS 10400 and manufacturer's installation guidelines.	
Wall finish types, heights, and extents to be confirmed on relevant Wall Finishes Layouts, Elevations, and Detail Drawings.	
All substrates must be smooth, clean, dry, and free of loose material prior to finish application.	
Ensure compatibility between adhesives, primers, waterproofing systems, and finish materials.	
Provide movement joints aligned with structural joints and tile grid lines where applicable.	
All bathroom and wet area walls to receive waterproofing to a minimum height of 1500mm around showers and 300mm above all basins (unless otherwise noted).	
Corners to be reinforced with corner beads or approved reinforcement tape.	
All finishes to extend behind sanitary fixtures unless otherwise specified.	
All materials to be approved by Client. Plaster and paint samples to be tested on site prior to final approval by client.	

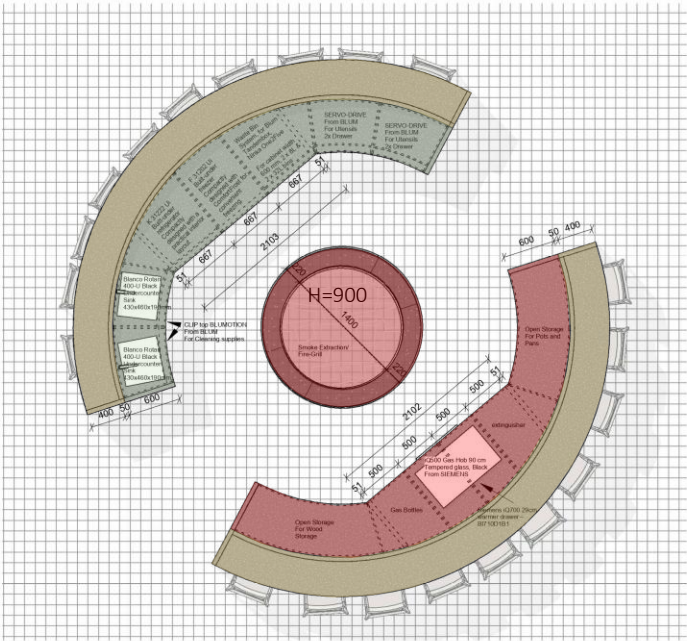


ELECTRICAL LEGEND	
	ELECTRICAL POINT INDICATOR (WALL)
	ELECTRICAL POINT INDICATOR (FLOOR AND SOFFIT)
	INDICATION OF HEIGHT OF FITTING ABOVE FLOOR
	FITTING IS BUILT INTO A JOINERY ITEM
	RECESSED FITTINGS IN CONCRETE BOXES IN SLABS OR SURFACE BEDS
	SINGLE 3-WAY PLUG POINT
	DOUBLE 3-WAY PLUG POINT
	SINGLE 2-WAY PLUG POINT
	USB POINT
	KEY PAD POINT
	WATERPROOF PLUG POINT
	FLOOR PLUG
	ISOLATOR
	WATERPROOF ISOLATOR
	PROVIDE POWER POINT
	SHAVER PLUG SOCKET
	DISTRIBUTION BOARD
	METERBOX
	INTELLIBUS DISTRIBUTION BOARD
	PROBES FOR UNDERFLOOR HEATING
	TELEVISION SUPPLY
	AC CONTROL PANEL
	BLIND ISOLATOR
	BLIND CONTROL SWITCH
	CONDUIT FOR AUTO IRRIGATION
	AUTO IRRIGATION MAIN CONTROLLER
	ISOLATOR SWITCH A/C
	CEILING FAN
	MOTION SENSOR
	HEATED TOWEL RAIL
	GEYSER
	HOME AUTOMATION LOCAL CONTROL PAD
	HOME AUTOMATION MAIN CONTROL PAD
	CIRCUIT LINKED TO ELECTRIC BACK-UP
	INTERNET SUPPLY
	LIGHT SWITCH

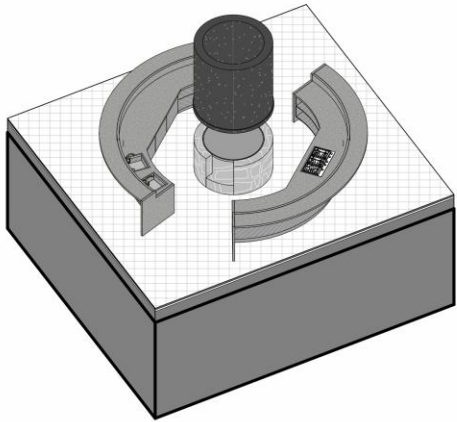






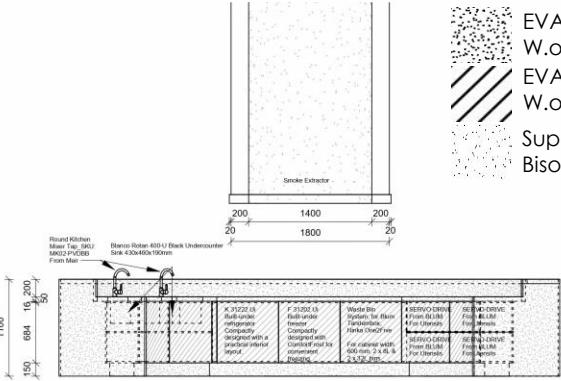


- Dining
- Food Prep and cooking
- Cleaning

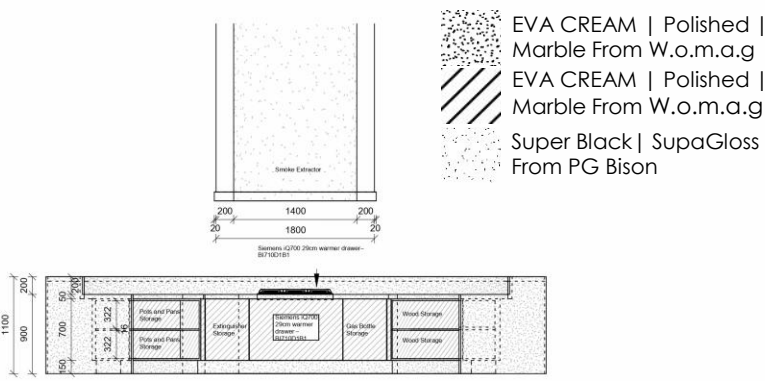


1 I\_1000\_I0\_Ground Floor - Callout 1

4 AXO OF OPEN FIRE COOKING



- EVA CREAM | Polished | Marble From W.o.m.a.g
- EVA CREAM | Polished | Marble From W.o.m.a.g
- Super Black | SupaGloss From PG Bison

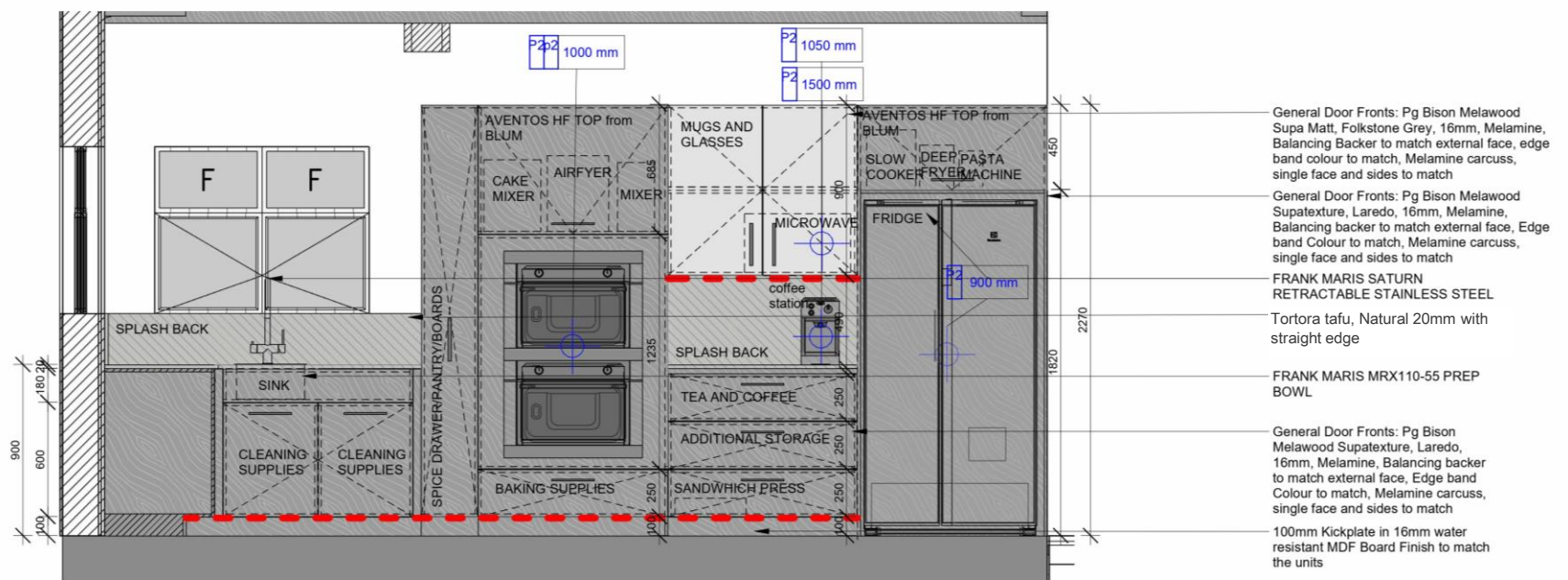


- EVA CREAM | Polished | Marble From W.o.m.a.g
- EVA CREAM | Polished | Marble From W.o.m.a.g
- Super Black | SupaGloss From PG Bison

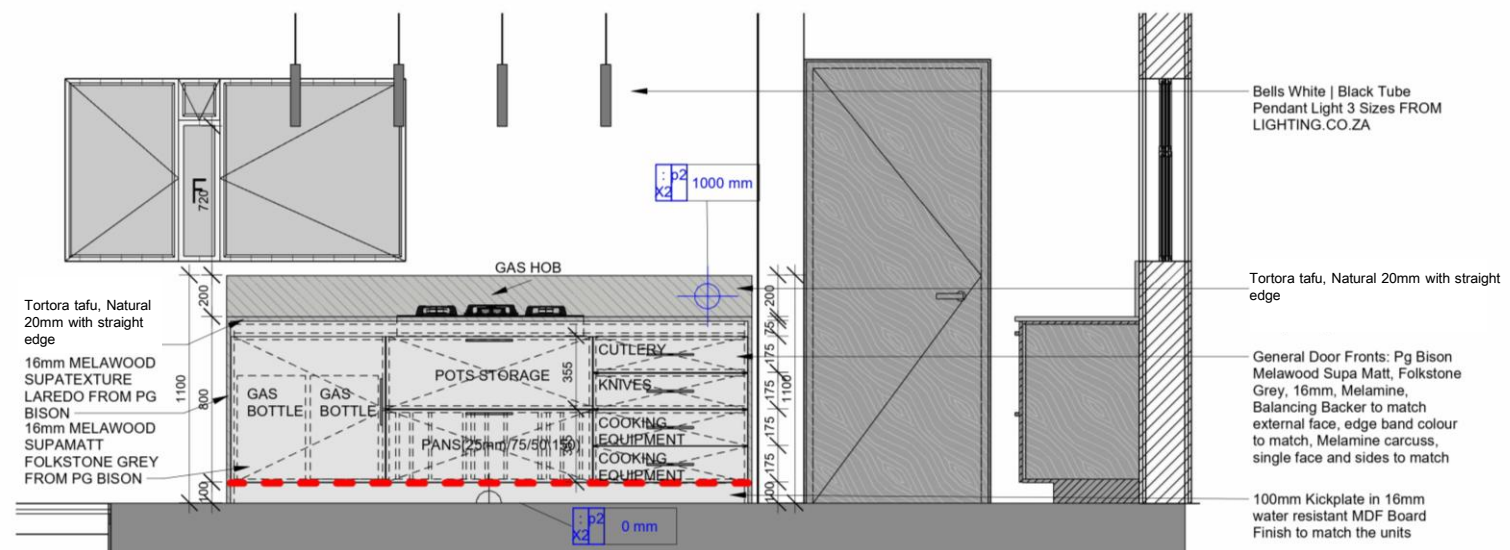
2 COOKING SECTION\_CLEANING SECTION

3 COOKING SECTION\_PREP AREA

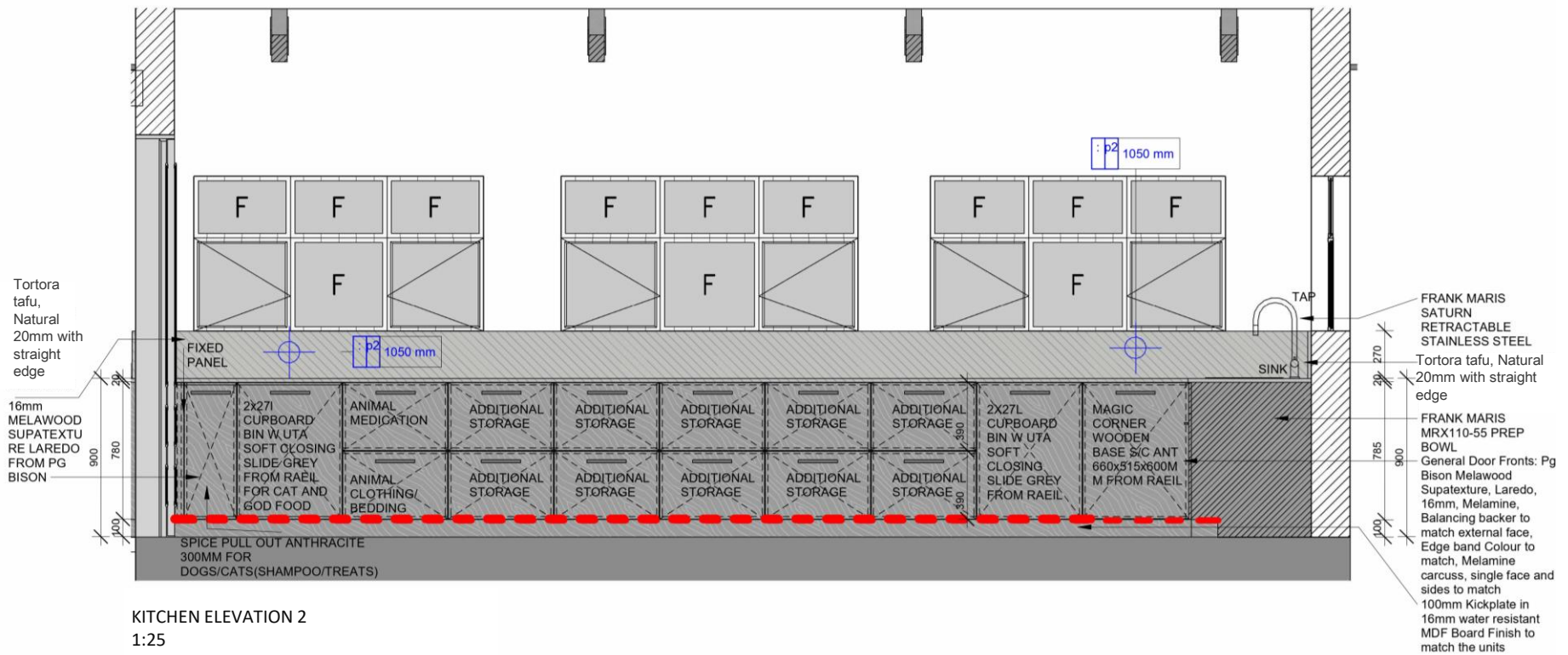




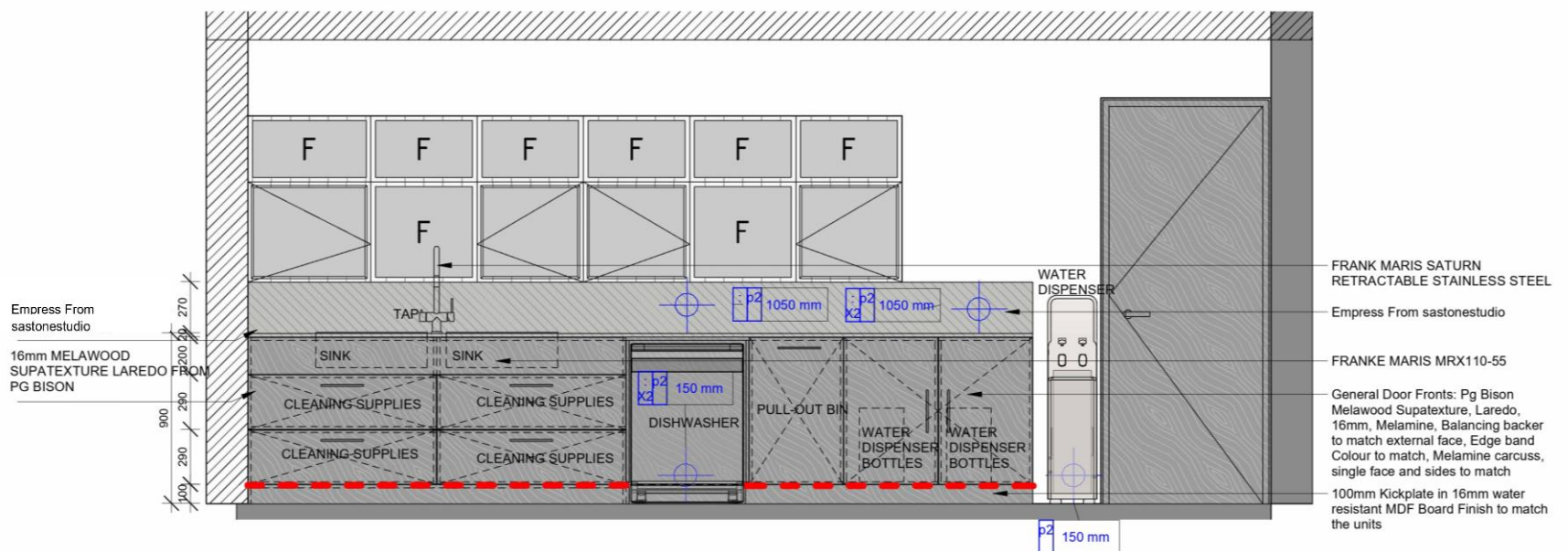
KITCHEN ELEVATION 1  
1:25



KITCHEN ELEVATION 2  
1:25



KITCHEN ELEVATION 2  
1:25



SCULLERY ELEVATION 1  
1:25

## 04 KITCHEN DESIGN







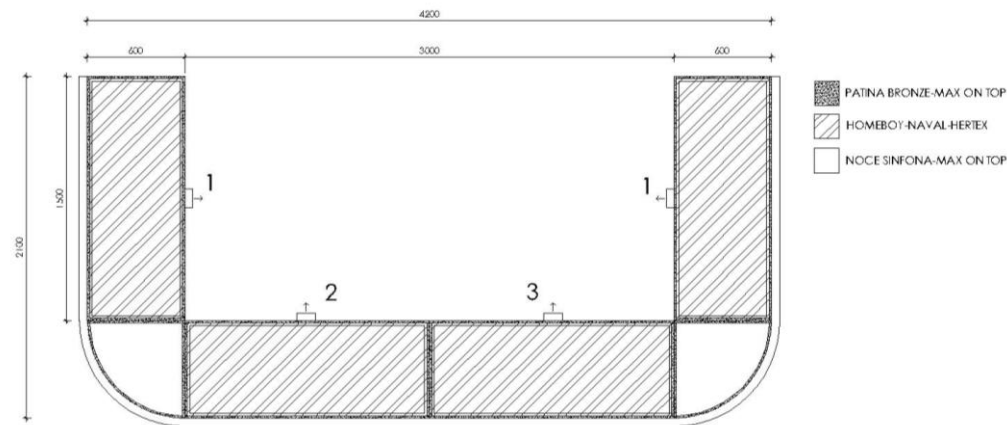
## SPECIFICATIONS:

### Cladding for Walls

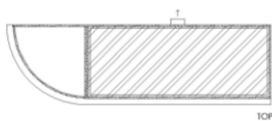
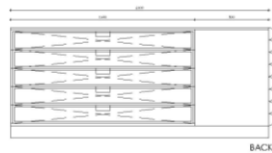
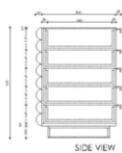
1. (MOT)(Arpa HPL)(Noce Sinfonia)(4625)(Aleve)(1.2mm) bonded onto (MDF 16mm)(with balancing backer of equivalent/similar thickness to HPL)(PUR bonding to match Noce Sinfonia 1.3mm ABS)

### Cladding for Skirting

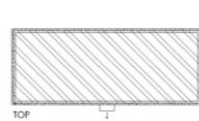
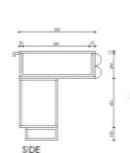
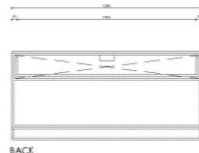
2. (MOT)(Arpa HPL)(Noce Sinfonia)(4625)(Aleve)(1.2mm) bonded onto (Moisture Resistant MDF 16mm)(with balancing backer of equivalent/similar thickness to HPL)(PUR bonding to match Noce Sinfonia 1.3mm ABS)



2.



1.



3.

