

CHLOE BARNARD

INTERIOR DESIGN PORTFOLIO



CHLOE BARNARD

INTERIOR DESIGN PORTFOLIO | 2022 - 2023
DESIGN TIME SCHOOL OF INTERIOR DESIGN

01 FERNWOOD

02 BOXED

03 STAY UNIQUE

04 BOXWOOD

05 HARTLEY HAUS

06 VINTAGE FOR LOVE

07 OBJECT DESIGN | VASE

01 FERNWOOD

Design Brief: The Bennett family seeks a home on a rectangular, generously sized, gently sloped erf with no building constraints. The site boasts gentle rolling hills with limited sea views, yet a 45° rotation reveals breathtaking Knysna lagoon views, prioritized for the entertainment area(s) and main bedroom. The location benefits from a neighboring home (no. 23) positioned farthest away from our plot, ensuring ample space. Additionally, the building line of the adjacent erf (no. 25) aligns favorably, offering distance and privacy. The goal is to maximize the lagoon vistas, particularly in the main living areas and bedroom while creating a modern, functional, and spacious dwelling for the Bennett family of five and their furry companion, Bailey the Beagle.



STREET FACING FACADE



FACADE FACING THE LAGOON



KITCHEN PERSPECTIVE



PANTRY PERSPECTIVE



SCULLERY PERSPECTIVE



KITCHEN/DINING PERSPECTIVE



LIVING ROOM PERSPECTIVE



MAIN BEDROOM PERSPECTIVE



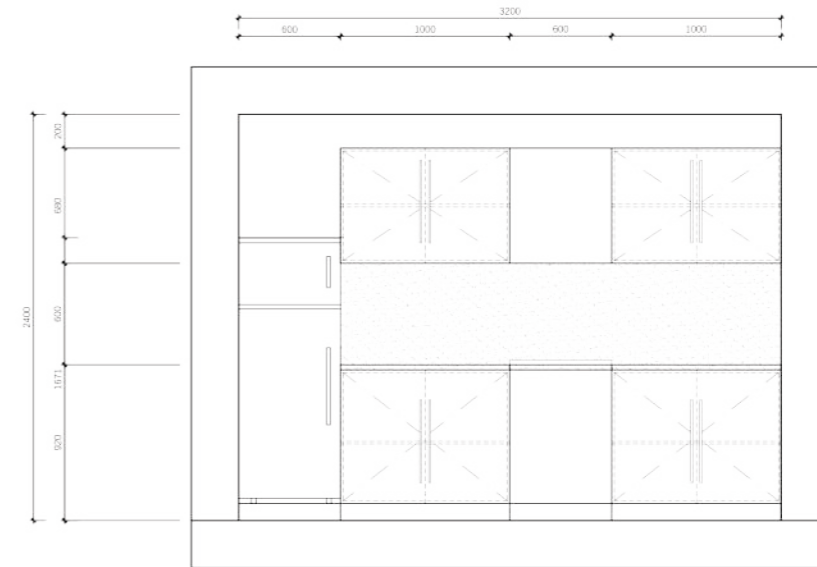
CLOSET PERSPECTIVE



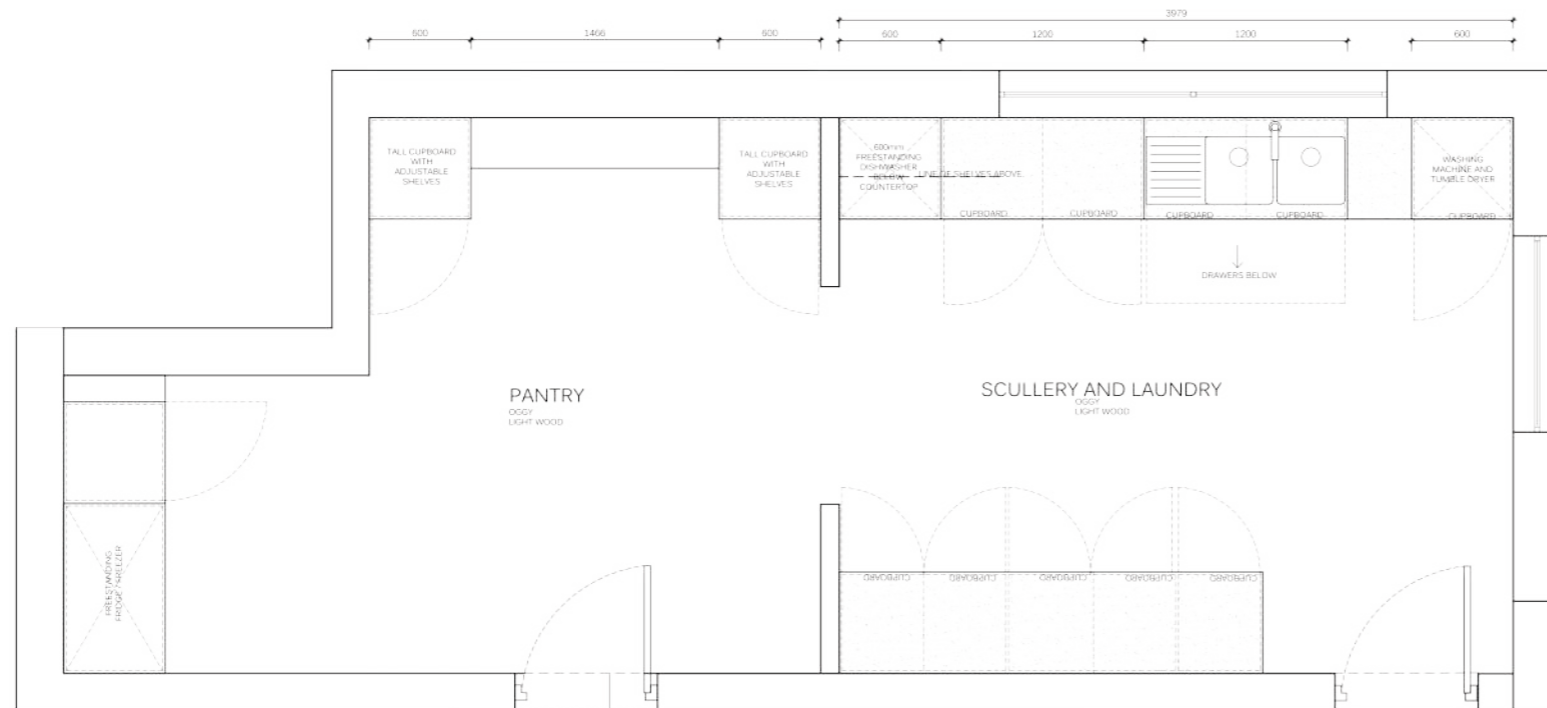
BATHROOM PERSPECTIVE



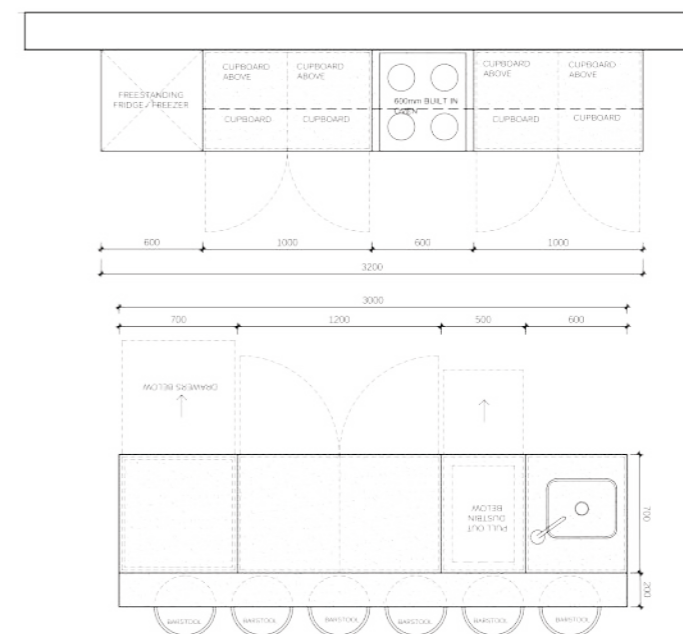
BATHROOM PERSPECTIVE



KITCHEN ELEVATION A NTS



PANTRY/SCULLERY FLOOR PLAN NTS



KITCHEN FLOOR PLAN NTS

02 BOXED

Design a light-filled, modern abode in V&A Waterfront, Cape Town. Embrace the narrow space's potential by maximizing natural light through expansive windows, skylights, and a rooftop garden. The open-plan ground floor merges living, dining, and kitchen areas, extending seamlessly into a private courtyard. Balance privacy and connection to the vibrant surroundings by strategically placing windows and balconies. Craft versatile spaces adaptable to family needs. Ensure a sleek, contemporary aesthetic harmonizes with the urban landscape. Consider potential connectivity to neighboring buildings while maintaining functionality within the given dimensions. Prioritize views, airflow, and flexibility to create an inviting, modern haven amidst Cape Town's bustling



DINING/KITCHEN PERSPECTIVE



DINING/KITCHEN PERSPECTIVE



DINING/LOUNGE PERSPECTIVE



DINING/KITCHEN PERSPECTIVE



BEDROOM PERSPECTIVE



BALCONY PERSPECTIVE



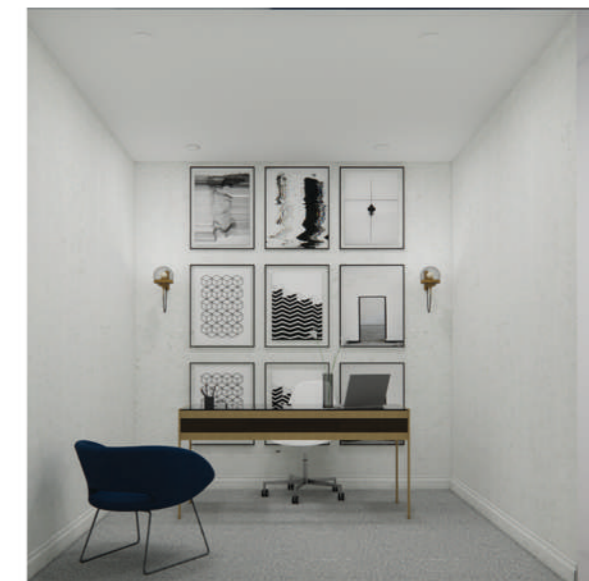
BATHROOM PERSPECTIVE



CINEMA PERSPECTIVE



GUEST BATHROOM PERSPECTIVE



STUDY PERSPECTIVE



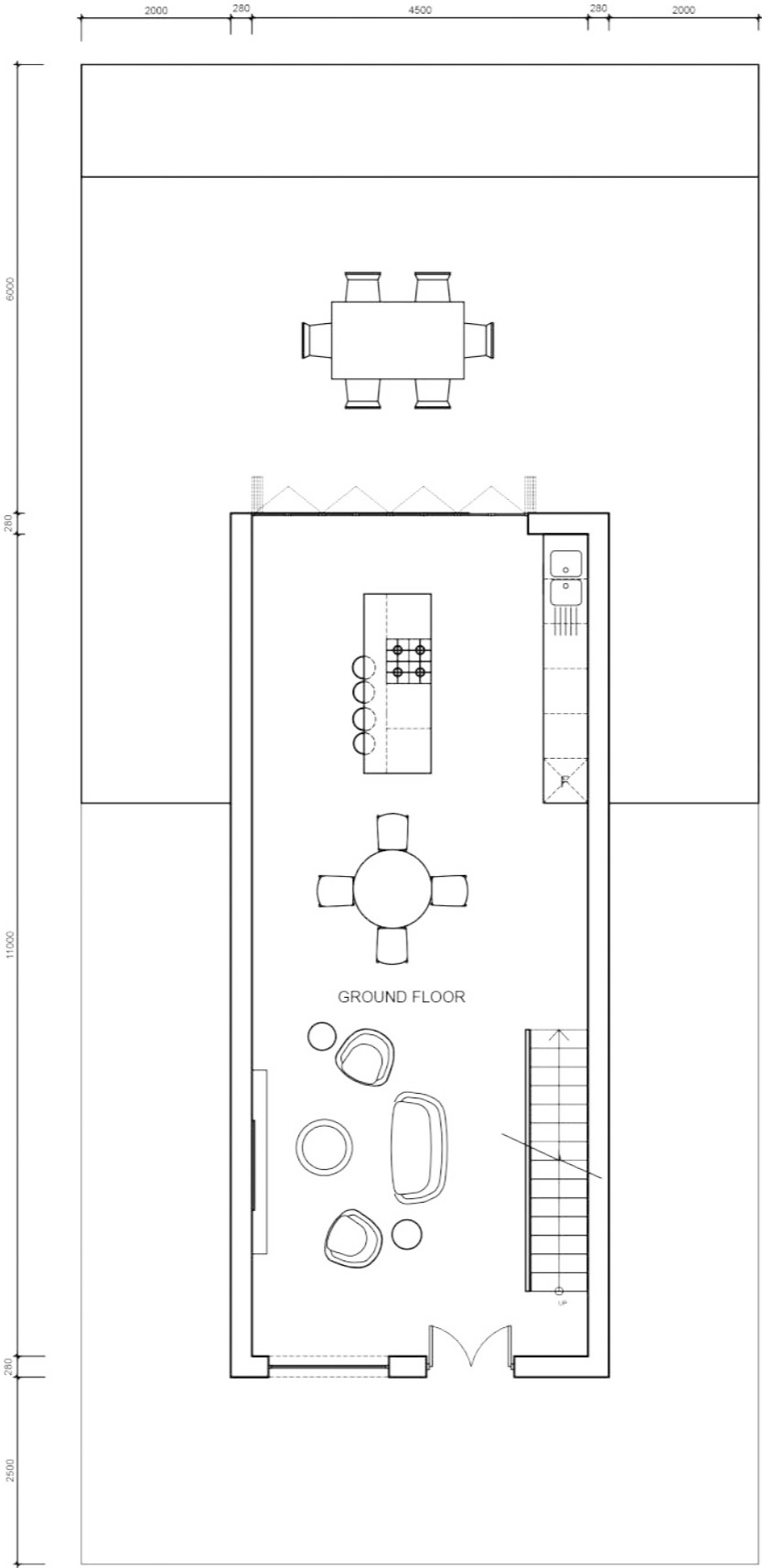
ROOFTOP POOL / LOUNGE PERSPECTIVE



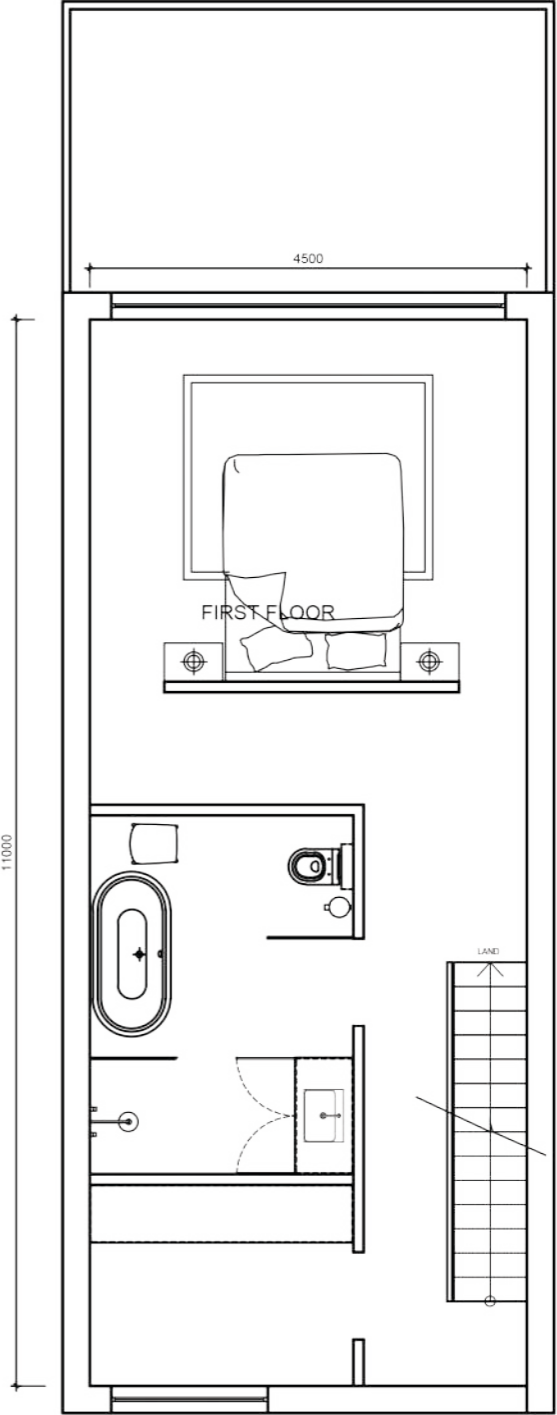
ROOFTOP PERSPECTIVE SEATING



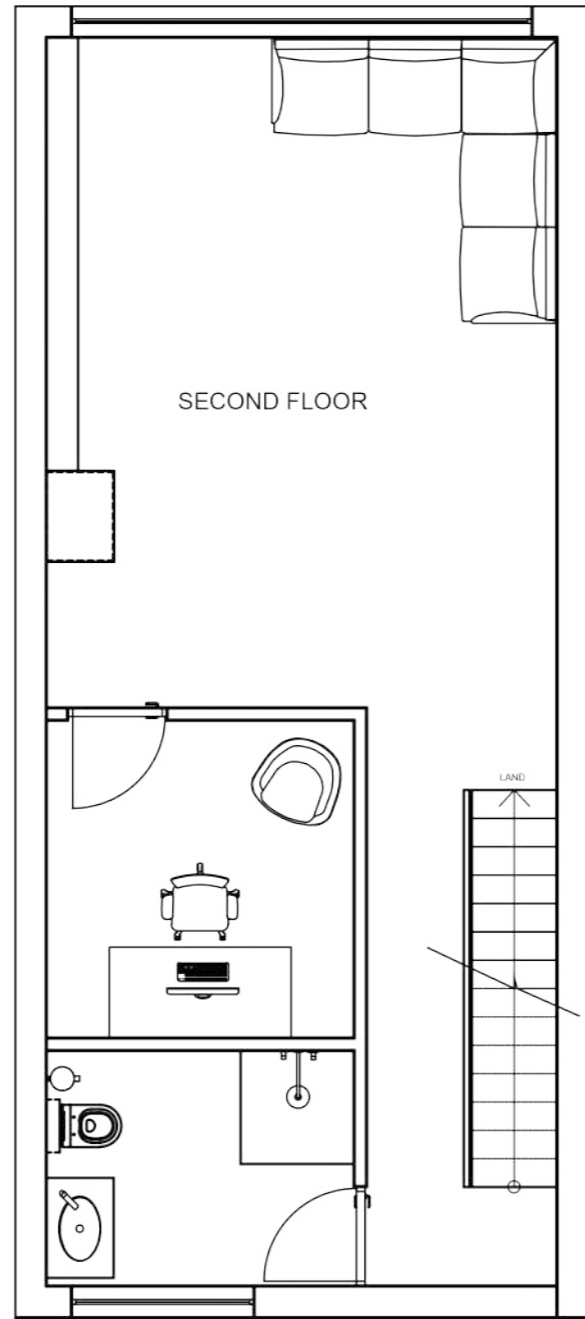
ROOFTOP BIC PERSPECTIVE



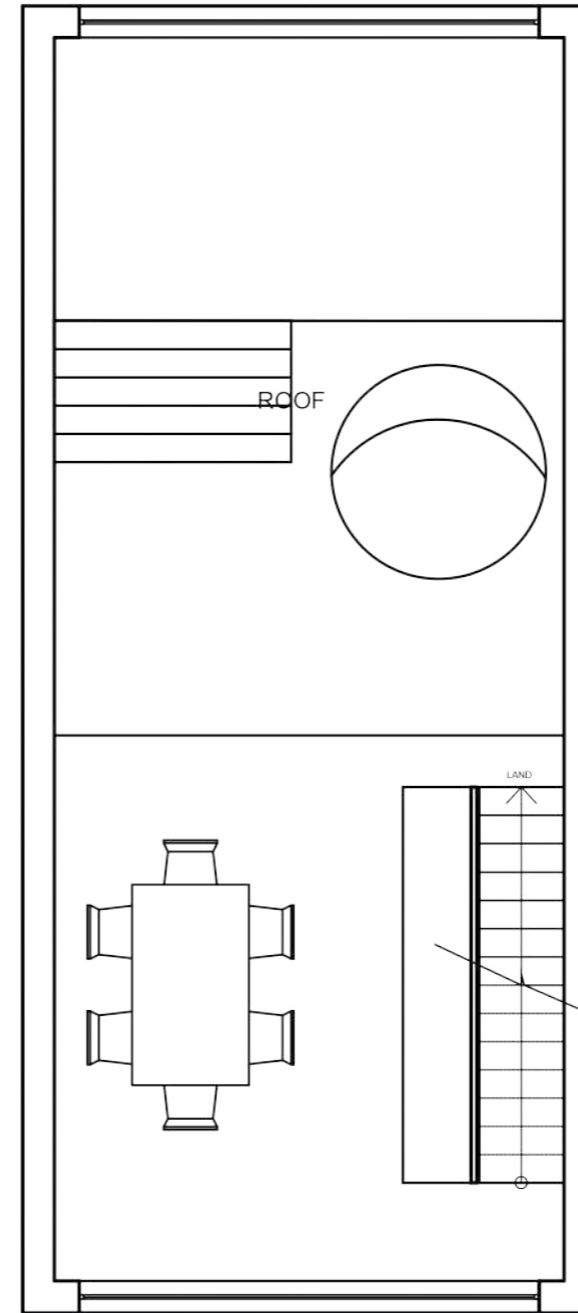
GROUND FLOOR PLAN NTS



FIRST FLOOR PLAN NTS



SECOND FLOOR PLAN NTS



ROOFTOP FLOOR PLAN NTS

03 STAY UNIQUE

The elevated small house embodies minimalist living, intricately connected to nature. Perched on stilts, it blends with the landscape, boasting clean lines and functionality. Abundant natural light floods through its large windows, blurring interior and exterior boundaries. The house seamlessly integrates outdoor elements, while also embracing multi-functional furniture for a versatile living space.

STAY UNIQUE



FACADE



FACADE



TOP PERSPECTIVE



KITCHEN / LOUNGE PERSPECTIVE





LOUNGE PERSPECTIVE



KITCHEN PERSPECTIVE

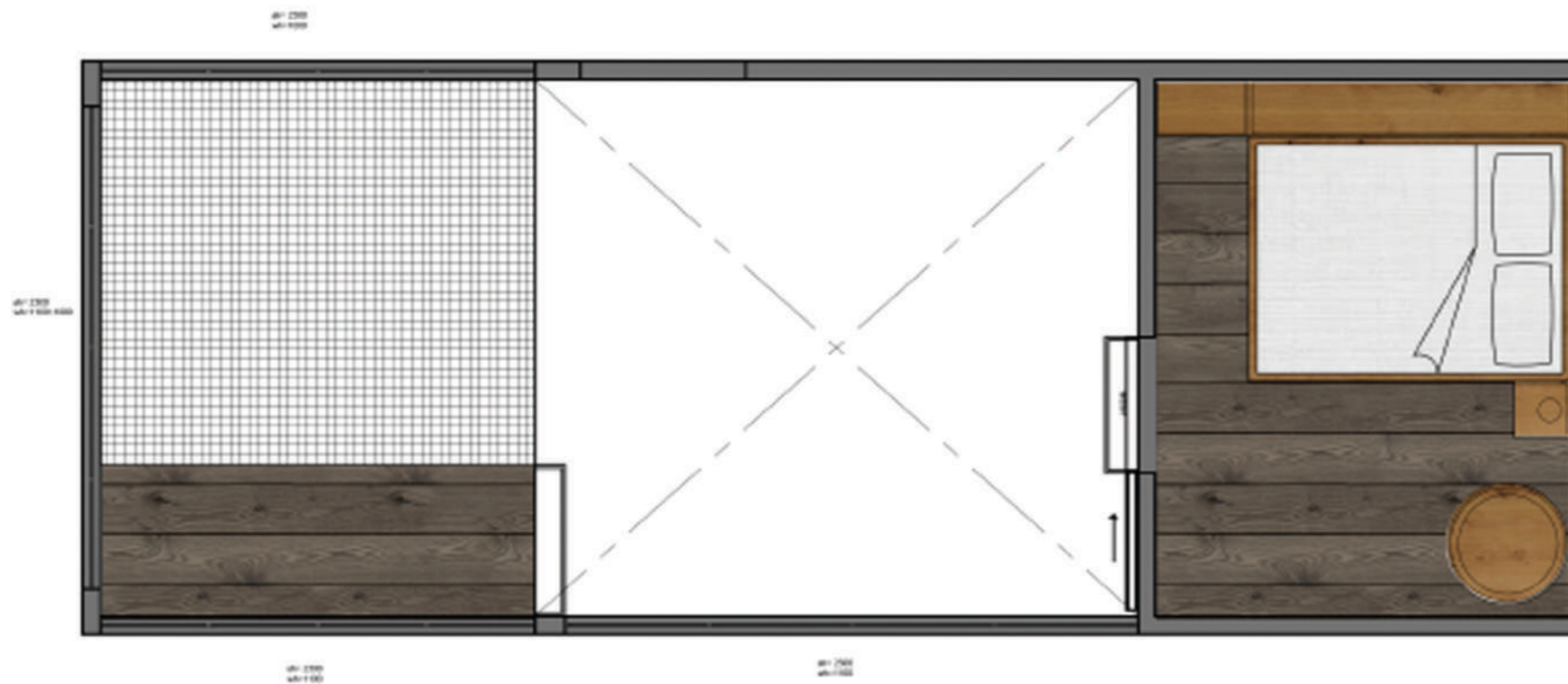


BATHROOM PERSPECTIVES

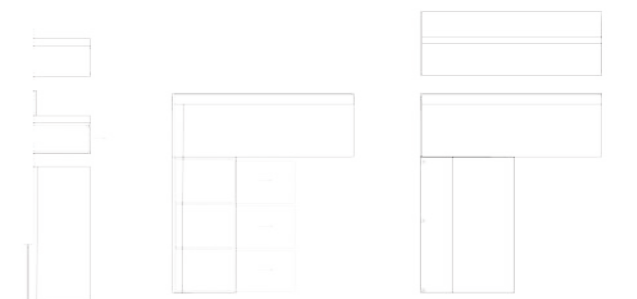
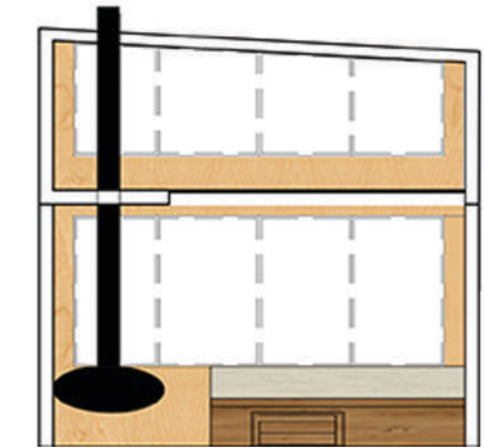
STAY UNIQUE



GROUND



GROUND FLOOR PLAN NTS



SLEEPER COUCH WITH STORAGE

Run a competition with Design Time students whereby they put together a design scope for the city block fronting Strand, Loop, and Bree Street. Think residential conversion, new offices, campus, hotel, hostel etc – the world is your oyster.

Main objective – be creative/quirky/different and to not play it safe



FACADE FACING STREET



PERSPECTIVE OF LOBBY



BOXWOOD



PERSPECTIVE OF KITCHEN



PERSPECTIVE OF LOUNGE

BOXWOOD



PERSPECTIVE OF BEDROOM



PERSPECTIVE OF BATHROOM

BOXWOOD



PERSPECTIVE OF ROOFTOP BAR

BOXWOOD

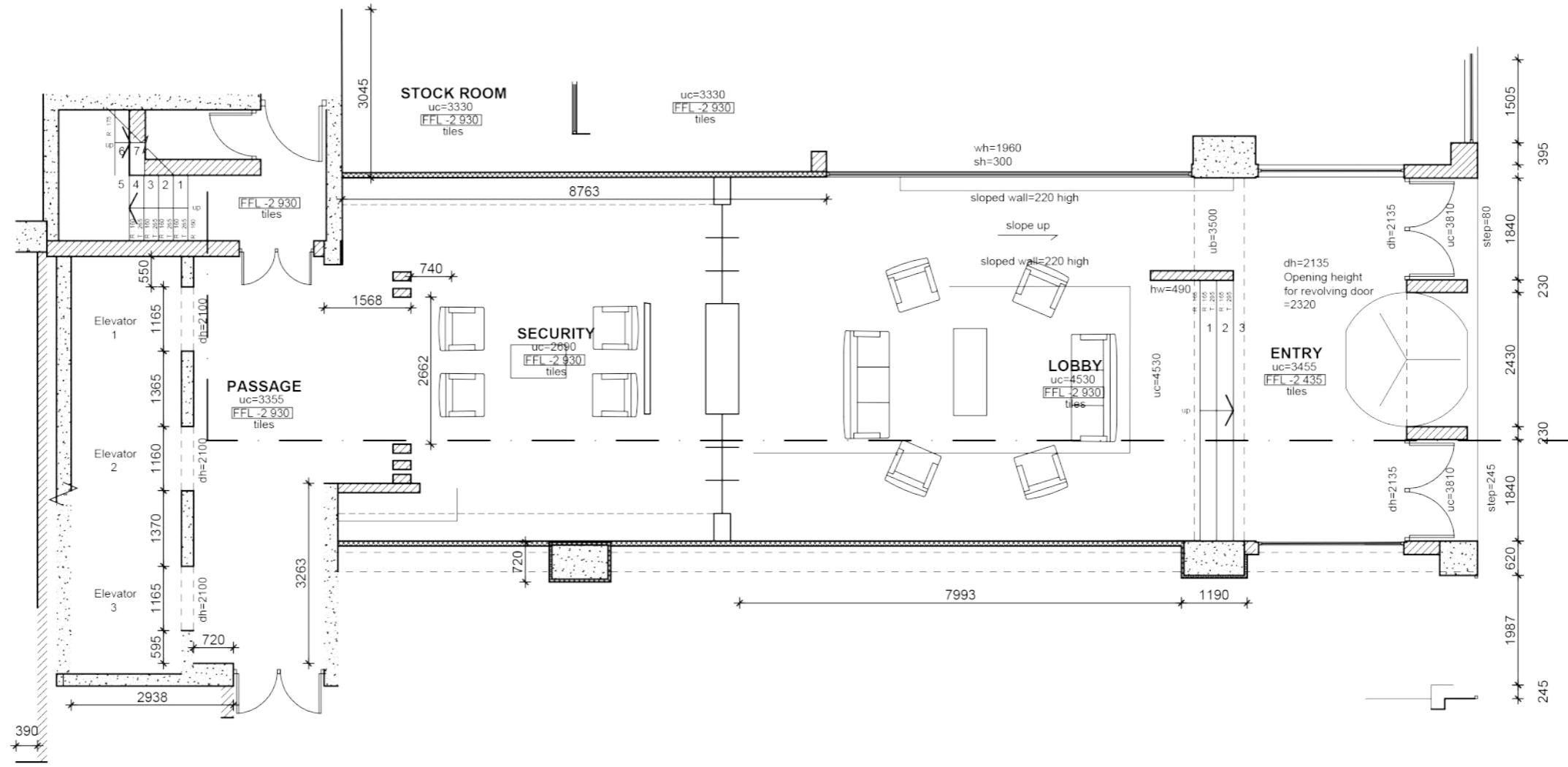


PERSPECTIVE OF BATHROOM/BOOTH SEATING



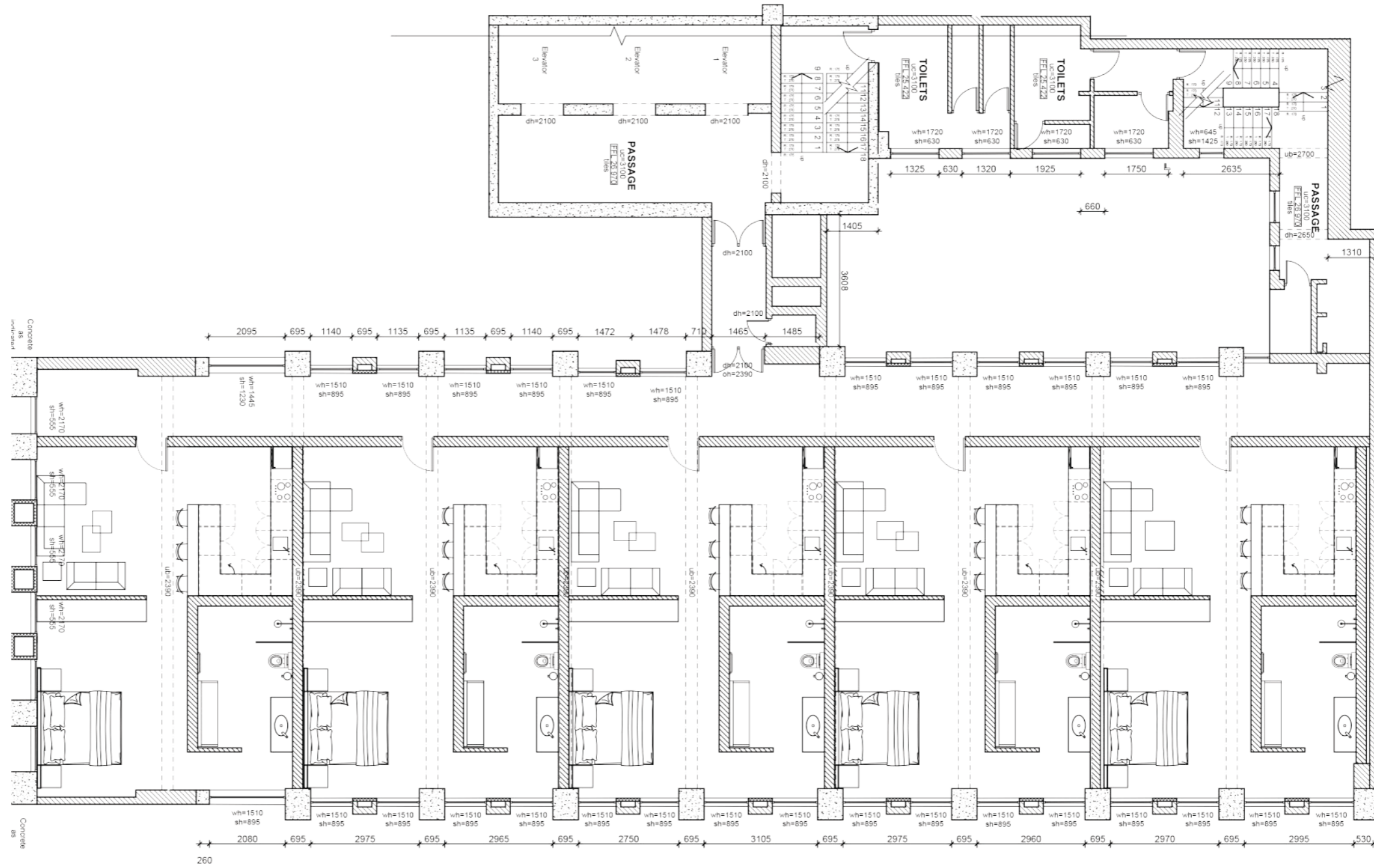
PERSPECTIVE OF BAR SEATING

BOXWOOD



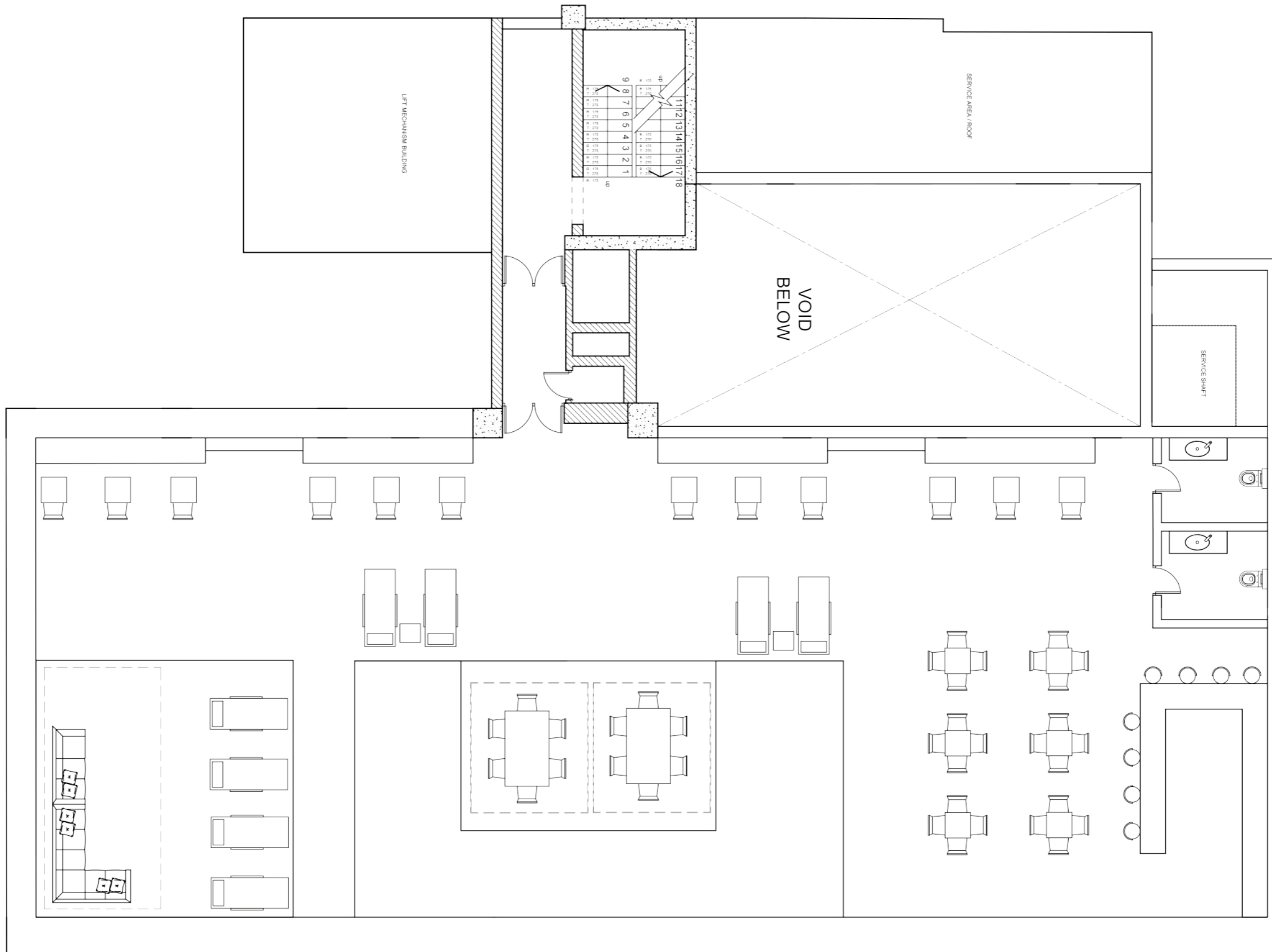
LOBBY FLOOR PLAN NTS

BOXWOOD

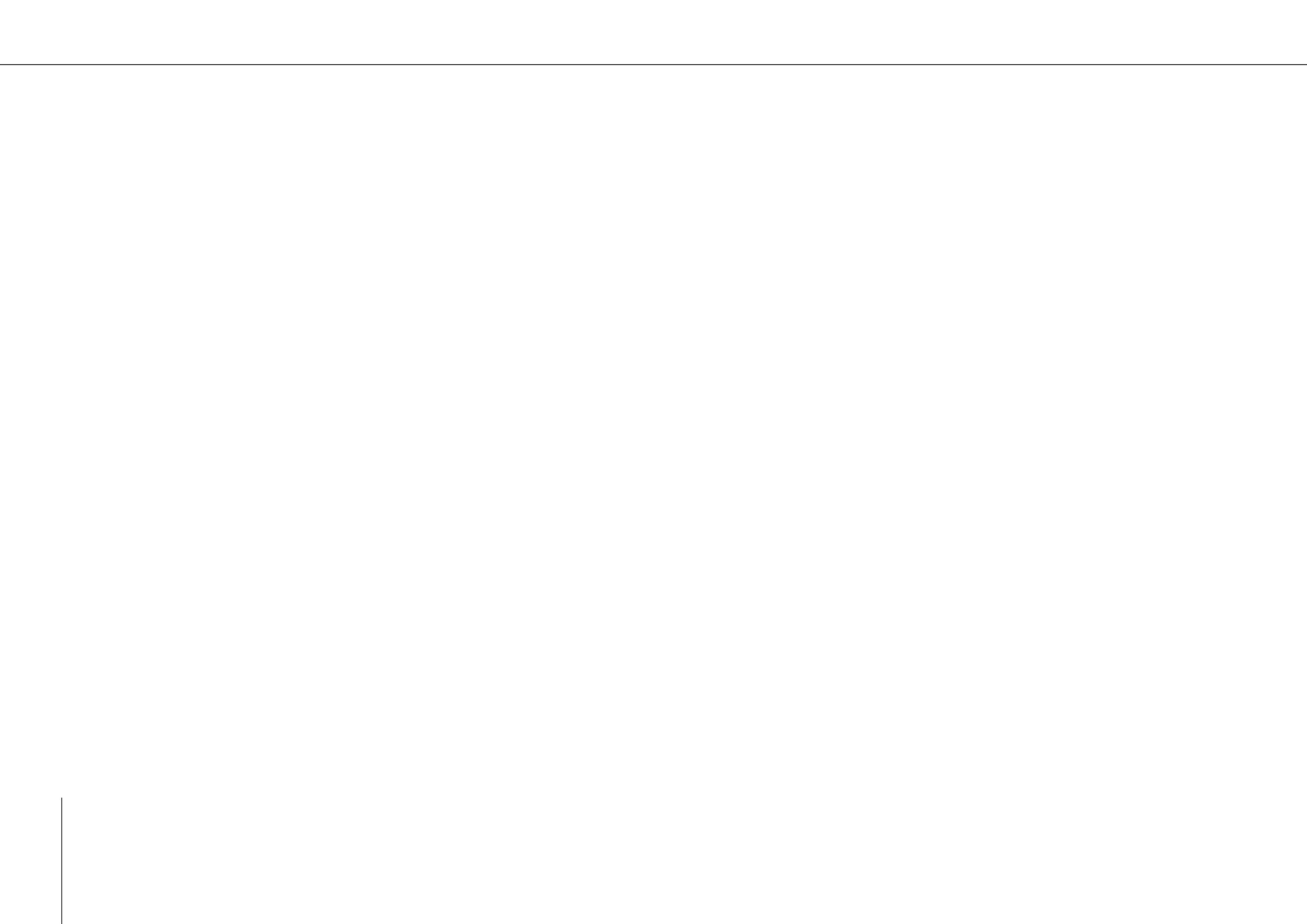


APARTMENT FLOOR PLAN NTS

BOXWOOD



NEDBANK ROOFTOP FLOOR PLAN NTS



The envisioned hotel in New York for artists is a dynamic blend of creativity and comfort. Drawing inspiration from the city's vibrant art scene, the design focuses on fostering a communal atmosphere where artistic minds converge. Studios, exhibition spaces, and collaborative areas harmonize with cozy, loft-style rooms. Industrial elements merge with eclectic decor, showcasing local artwork throughout. Flexible spaces cater to various mediums, encouraging workshops, performances, and networking. Natural light floods communal areas, enhancing the ambiance. The hotel aims to be a haven for creative souls, fostering inspiration, connection, and a distinctive New York experience for artists from all disciplines.



PERSPECTIVE OF LOBBY



PERSPECTIVE OF LOBBY



PERSPECTIVE OF RECEPTION DESK



PERSPECTIVE OF RECEPTION DESK



PERSPECTIVE OF LOUNGE



PERSPECTIVE OF LOUNGE





PERSPECTIVE OF COFFEE STATION / DRESSING TABLE



SEATING AREA



PERSPECTIVE OF COFFEE STATION / DRESSING TABLE



SEATING AREA



PERSPECTIVE OF BATHROOM



PERSPECTIVE OF BATHROOM

06 VINTAGE WITH LOVE

You have been approached by the VINTAGE WITH LOVE team and have been tasked with designing their next show stopping event at the Cape Town Cruise Terminal at the V&A Waterfront. Vintage with Love is the dream of a group of savvy, fashion-forward women doing their part for the community, by incorporating fashion + charity into one FUN event - a vintage fashion sale. All money raised goes to literacy charities.



PERSPECTIVE OF RUNWAY



PERSPECTIVE OF BAR AND SEATING



PERSPECTIVE OF SEATING /AND RUNWAY



PERSPECTIVE OF RUNWAY

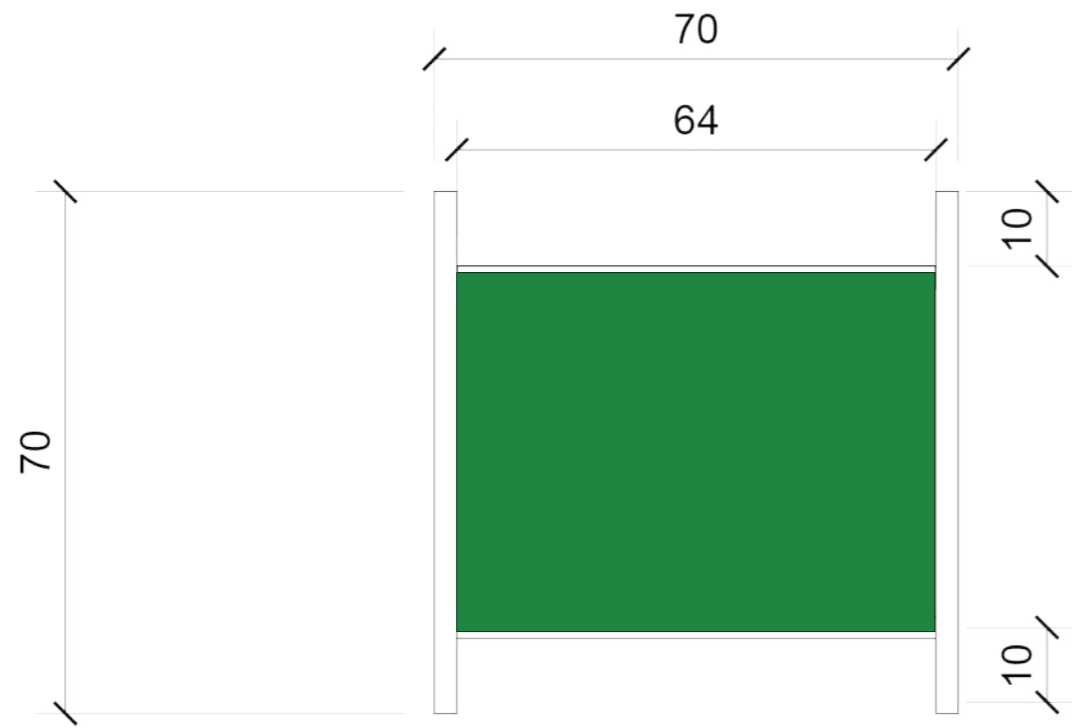
INTERIOR PERSPECTIVES



07 OBJECT DESIGN | VASE

Introducing the "Emerald Arc" vase, a fusion of nature's serenity and modern aesthetics. Its exterior boasts a serene seafoam green, evoking tranquility and harmony, while inside lies a hidden story—a darker green rectangular base merging seamlessly into a graceful curved bottom, a subtle nod to the enigmatic depths of the ocean. This duality symbolizes the balance between softness and strength, nature and contemporary design. Crafted to complement diverse interiors, the Emerald Arc vase stands as an embodiment of elegance and sophistication, inviting one to appreciate the beauty in contrasts and the allure of understated complexity.





Width - 70mm
Hight - 200mm
Colour - green U6010
- green U650

