



INTERIOR / PRODUCT DESIGN

# PORTFOLIO

2020 - 2021

Matt Muir

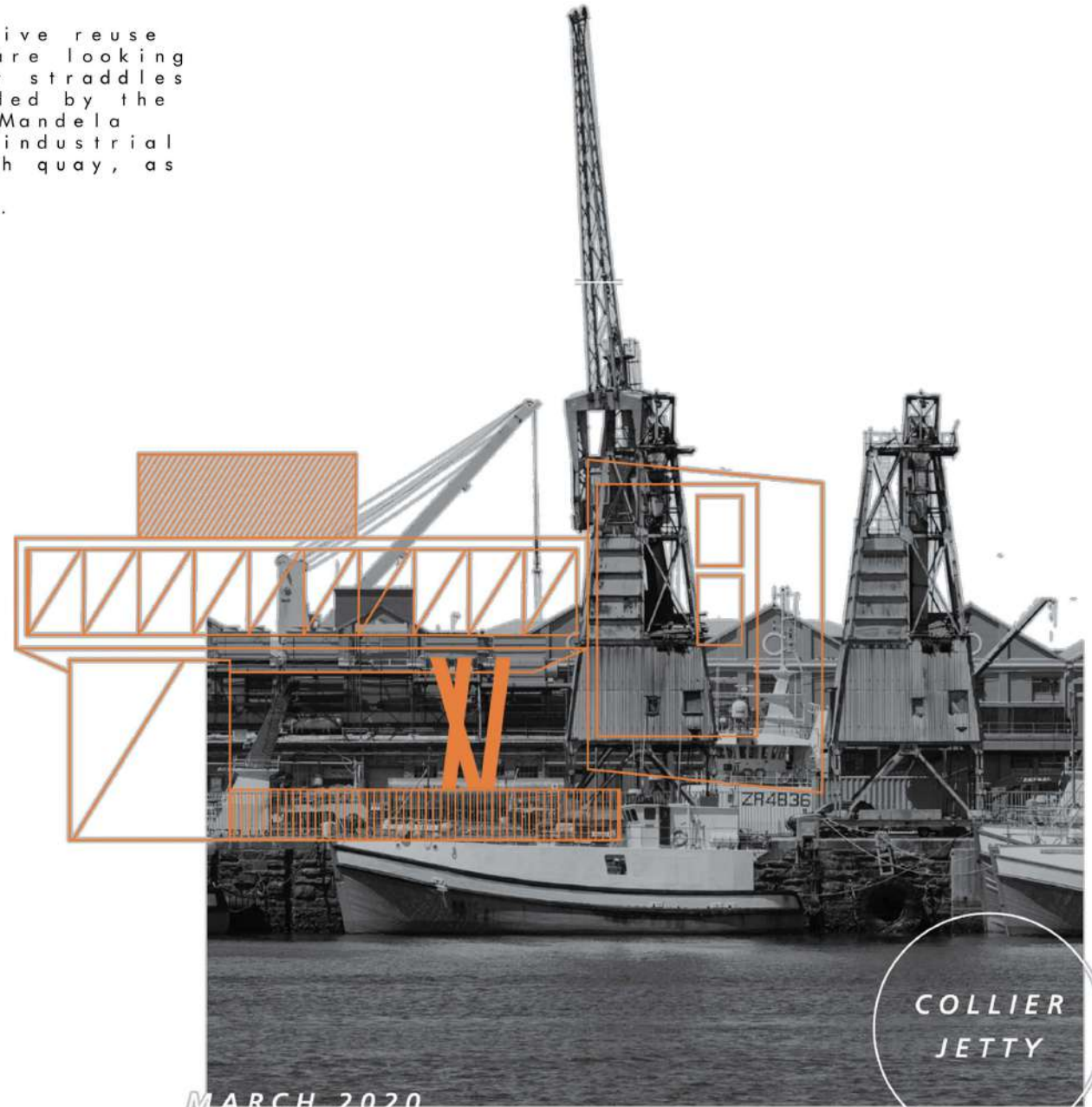
# TABLE OF CONTENTS :

Projects	Page Numbers
Caesarstone: Swell	01 / 06
PG Bison: The Block	07 / 11
Into the Future: The Helical	12 / 17
Airstream: Simplicity	18 / 21
Florstore: Designer Showcase	22 / 25
Pendent Light: Design Challenge	26 / 28
Plantr: Design Challenge	29 / 31

# CAESARSTONE

BRIEF

Drawing from the concept of adaptive reuse your clients, the V&A Waterfront, are looking to reactivate the Collier Jetty. It straddles the tourist-driven industry provided by the Waterfront mall and The Nelson Mandela Gateway to Robben Island, and the industrial function of boat repair at the fish quay, as well as several marine and logistical industries.

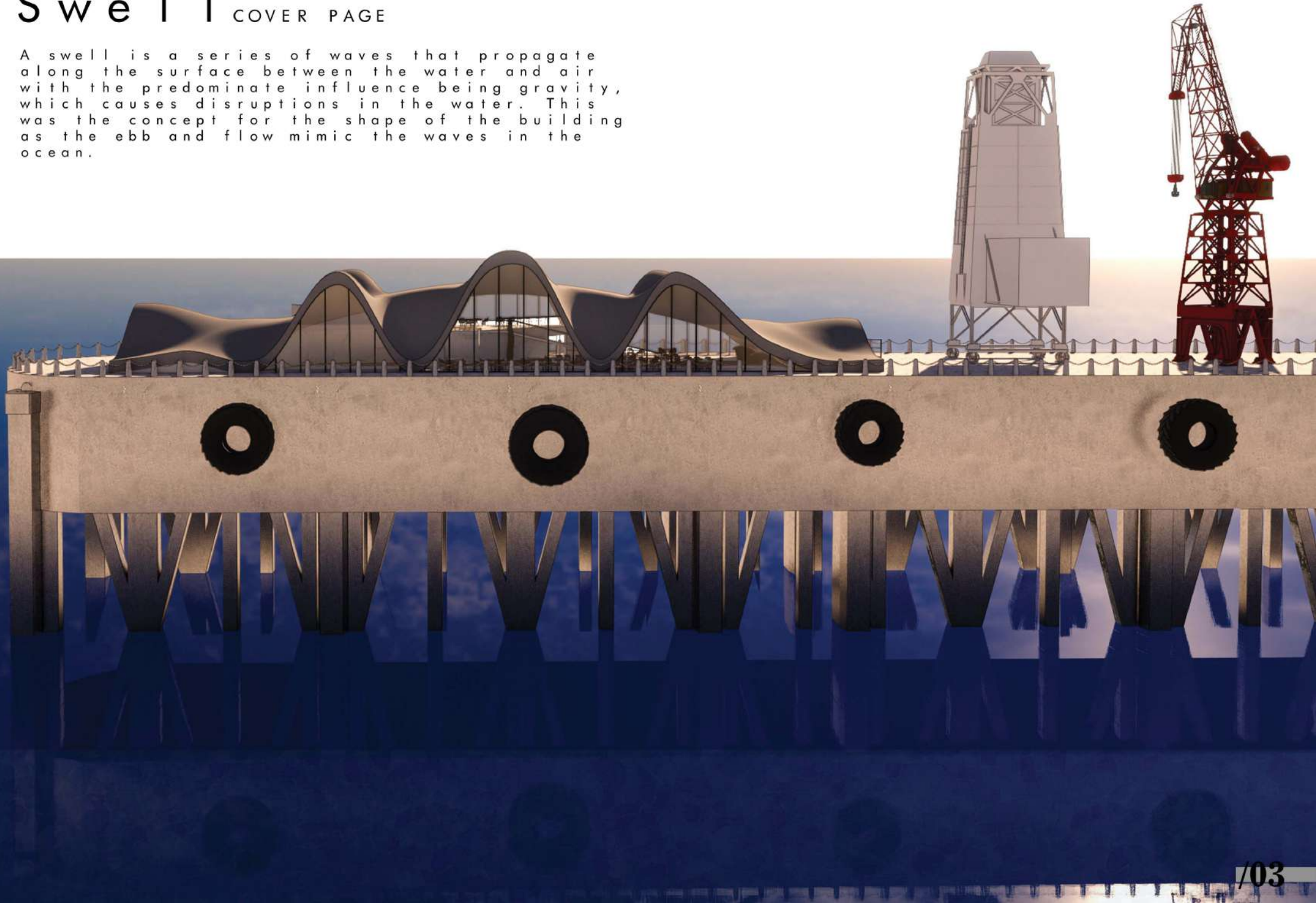


COLLIER  
JETTY

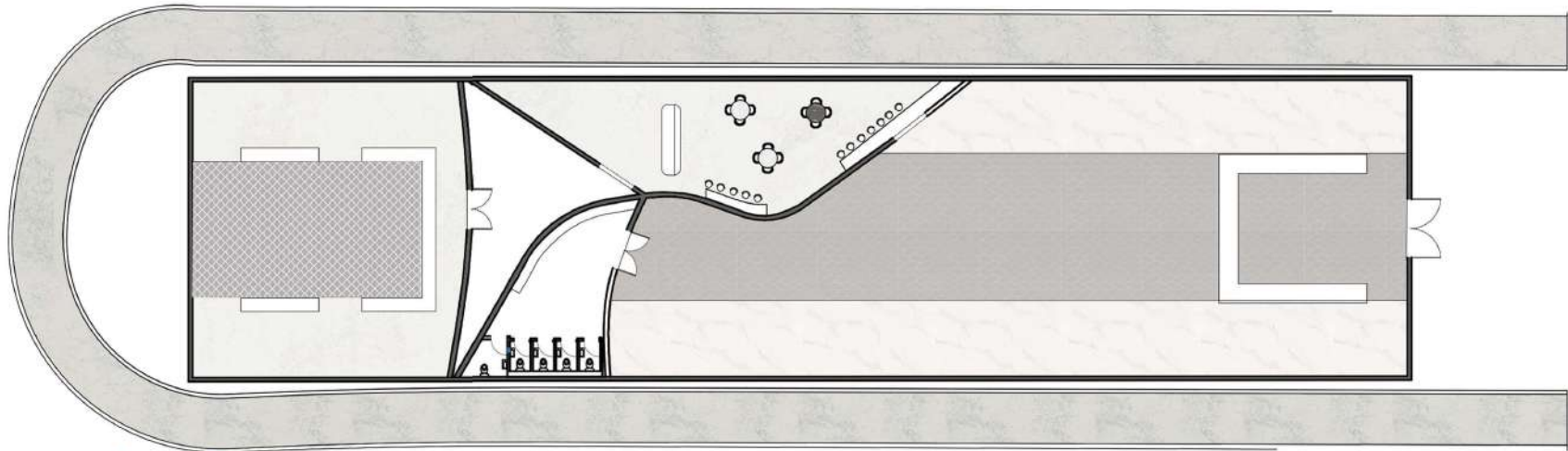
MARCH 2020

# Swell | COVER PAGE

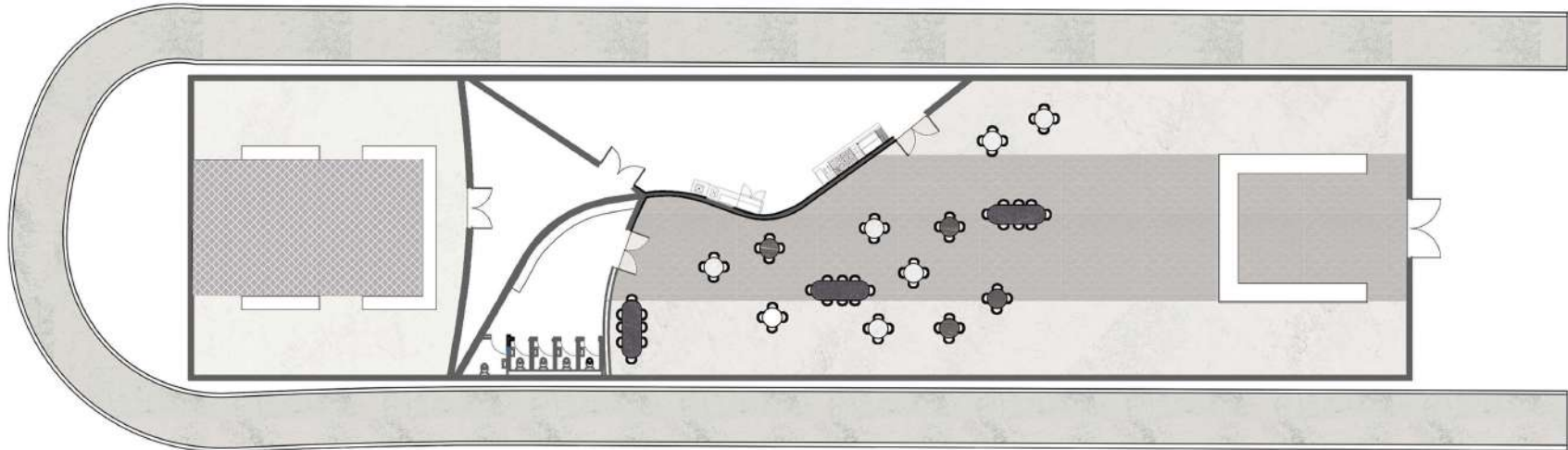
A swell is a series of waves that propagate along the surface between the water and air, with the predominate influence being gravity, which causes disruptions in the water. This was the concept for the shape of the building as the ebb and flow mimic the waves in the ocean.





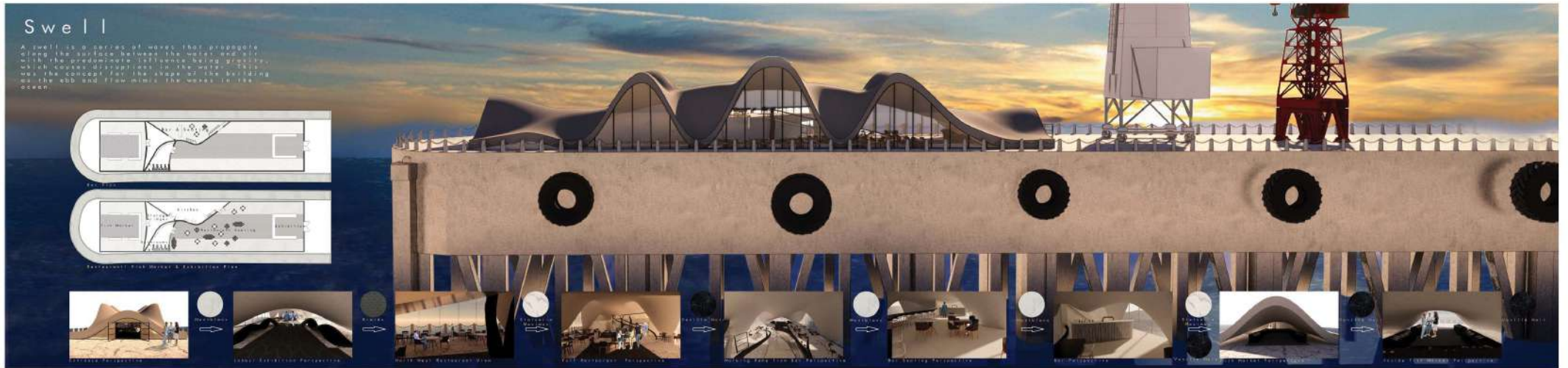


Bar Plan



Restaurant/ Fish Market & Exhibition Plan

# Swell | ORIGINAL BOARD



# THE BLOCK

The Block is a very modular building made from pre-fabricated steel framed boxes that represent the scaffolding used in the quarry when it was in use. As you enter, the interior mimics the exterior with a very simple Japanese style with lots of detail where every item has a use and purpose. Soft colours makes one feel comfortable and relaxed while waiting for the cable car or dining in the restaurant.





THE BLOCK PG BISON  
GENERAL PERSPECTIVES



Interior Restaurant Seating  
Perspective



Interior Restaurant Bar  
Perspective



Restaurant Outside Seating  
Perspective



Restaurant Exterior View  
Perspective



Cable Car Waiting Area  
Perspective



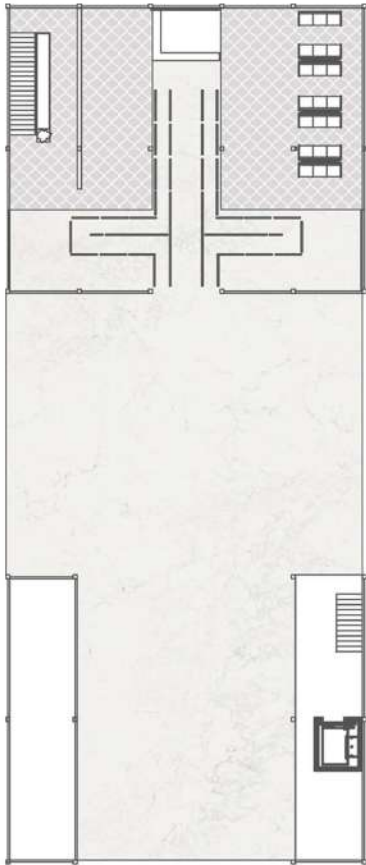
Banquette Seating Perspective



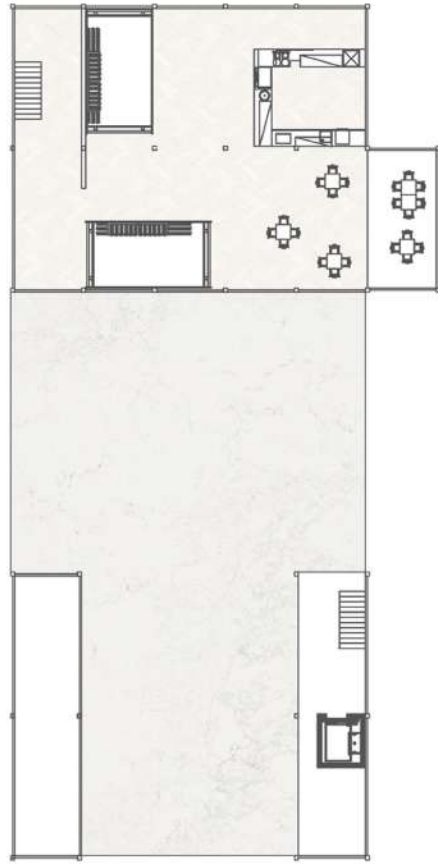
Cable Car/ Learning Centre  
Reception Perspective



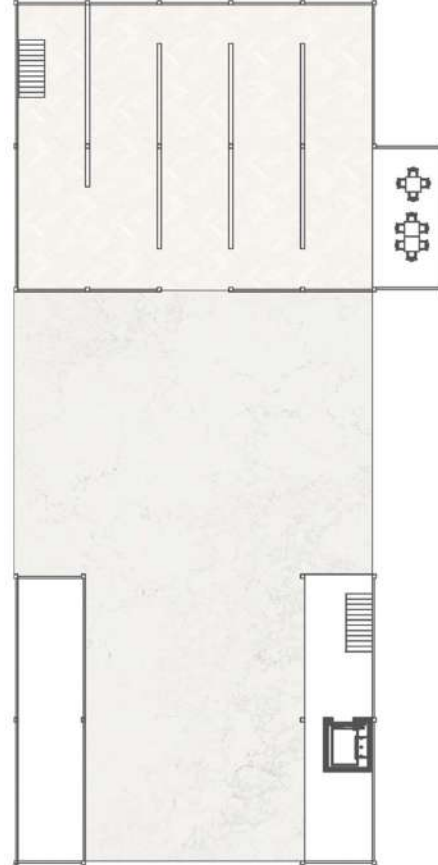
Learning Centre Waiting Area  
Perspective



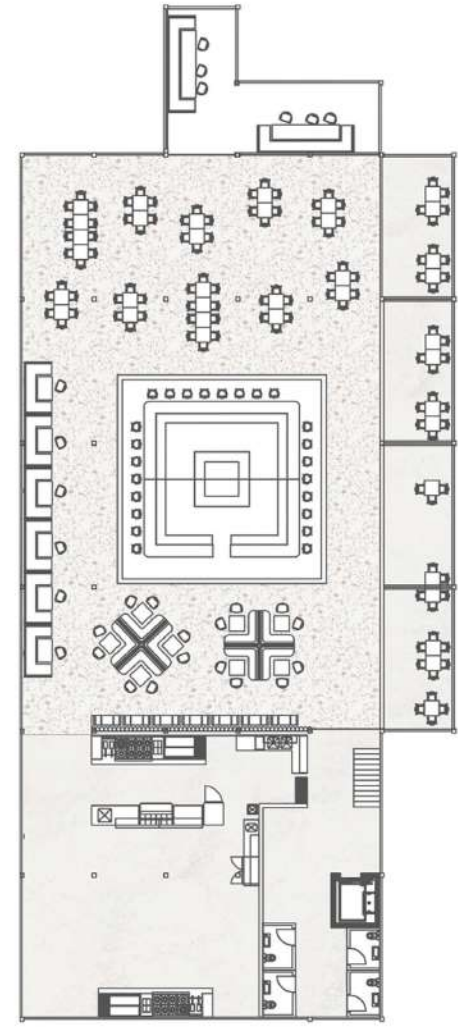
1st Floorplan: Reception/  
Queueing Area



2nd Floorplan: Retail Pods



3rd Floorplan: Learning  
Centre (History)



4th Floorplan: Kitchen,  
Restaurant & Bar

THE BLOCK

The Block is a very modular building made from prefabricated steel framed boxes that represent the scaffolding used in the quarry when it was in use. As you enter, the interior mimics the exterior with a very simple Japanese style with lots of detail where every item has a use and purpose. Soft colours make one feel comfortable and relaxed while waiting for the cable car or dining in the restaurant.



Interior Restaurant Seating Perspective



Interior Restaurant Bar Perspective



Interior Restaurant South Seating Perspective



Restaurant Exterior View Perspective



Exterior Perspective



Cable Car Waiting Area Perspective



Restaurant Outdoor Seating Perspective



Cable Car Waiting Area Restaurant Perspective



Cable Car Waiting Area Restaurant Perspective

# INTO THE FUTURE

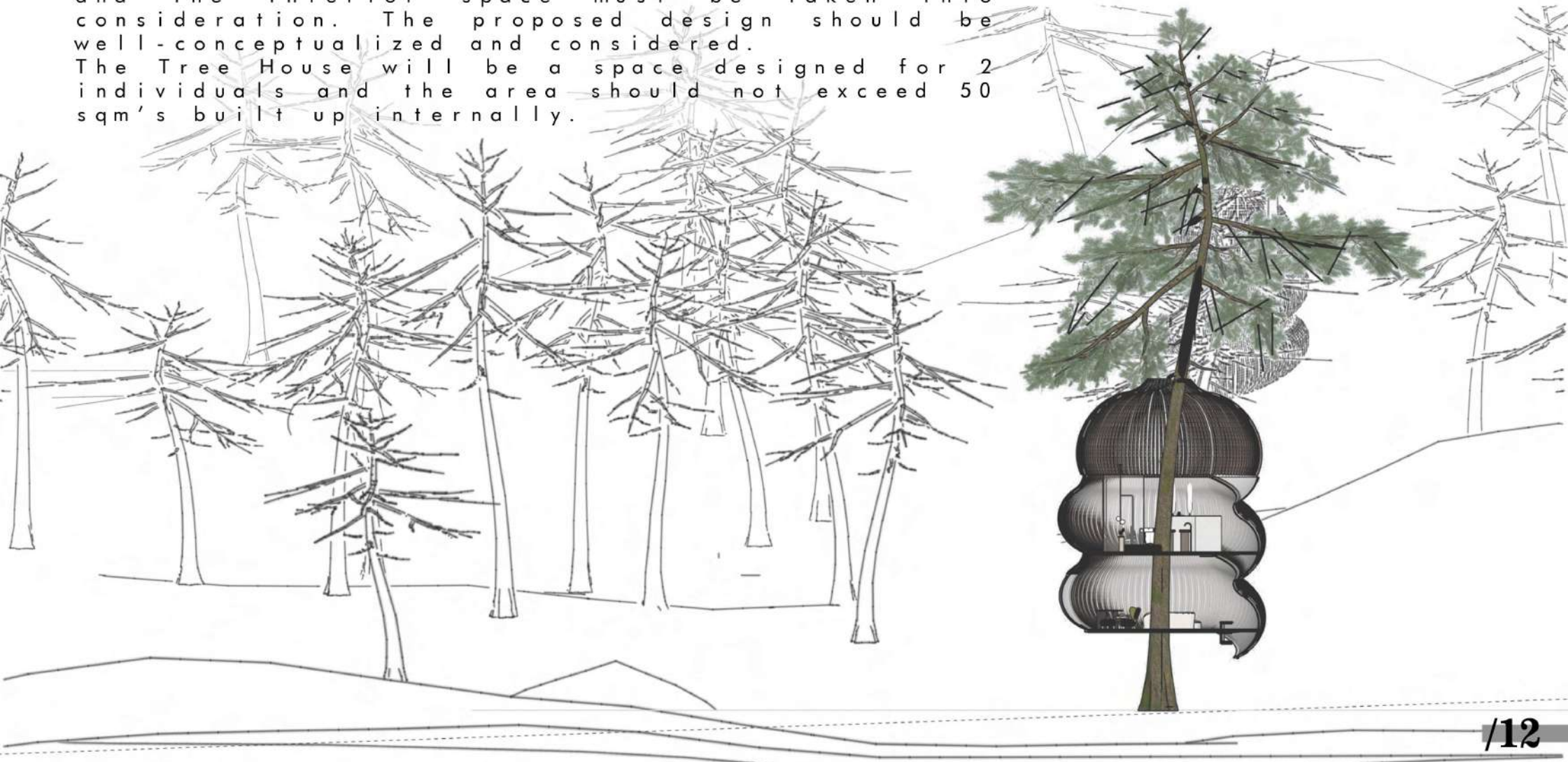
BRIEF

We invite you to imagine a way of living in the lap of nature, suspended amongst a magnificent forest, under starry skies, anywhere in the world.

The design of the Tree House must be innovative, creative with a sustainable edge whilst adhering to biophilic design principals.

The relations between the exterior surroundings and the interior space must be taken into consideration. The proposed design should be well-conceptualized and considered.

The Tree House will be a space designed for 2 individuals and the area should not exceed 50 sqm's built up internally.





# THE HELICAL GENERAL PERSPECTIVES



KITCHEN



WORK SPACE READING CORNER



WORK SPACE AND LIVING ROOM

# THE HELICAL GENERAL PERSPECTIVES



BATHROOM



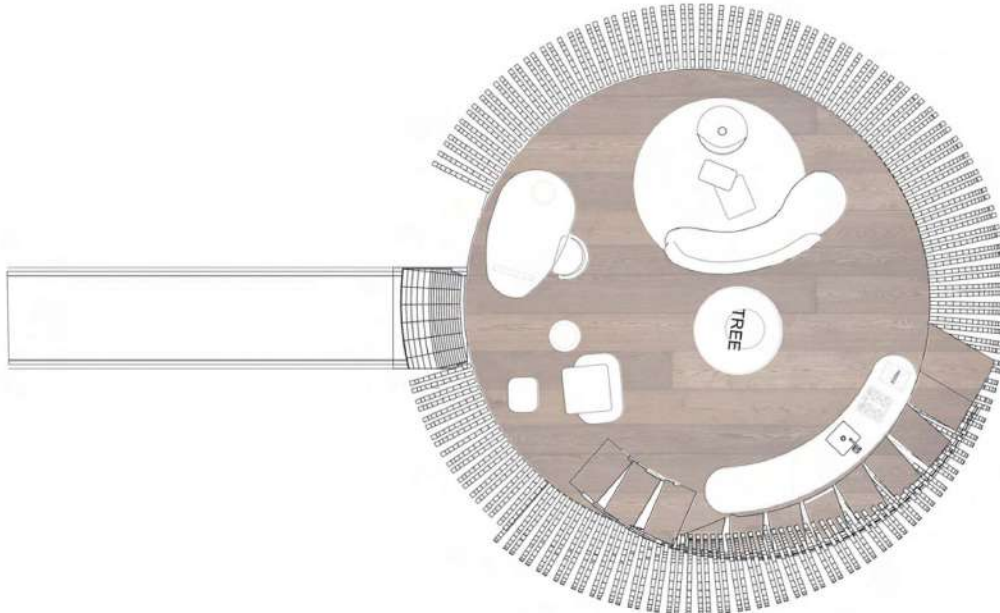
BEDROOM



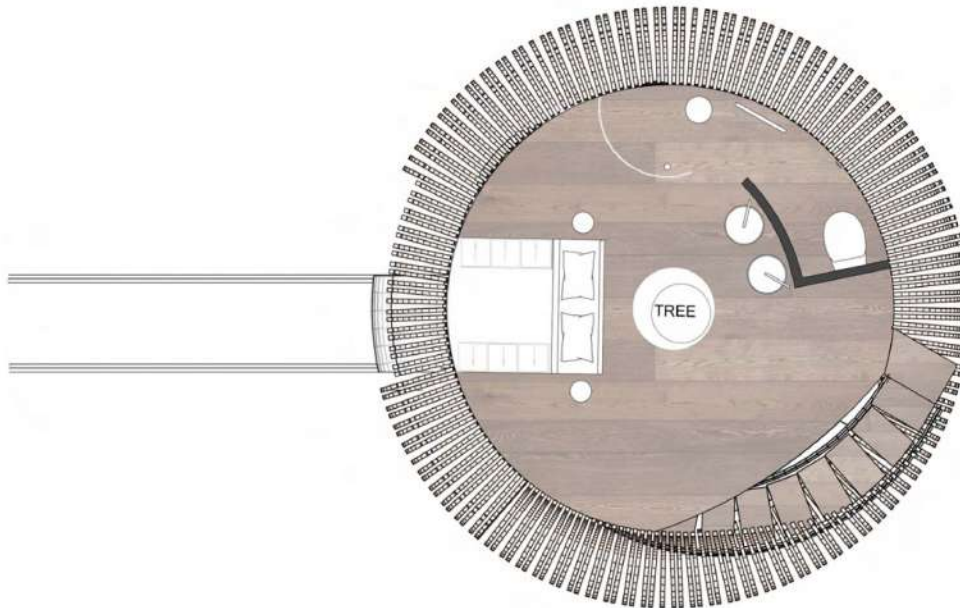
SHOWER



# THE HELICAL FLOORPLANS



FIRST LEVEL FLOOR PLAN  
NTS

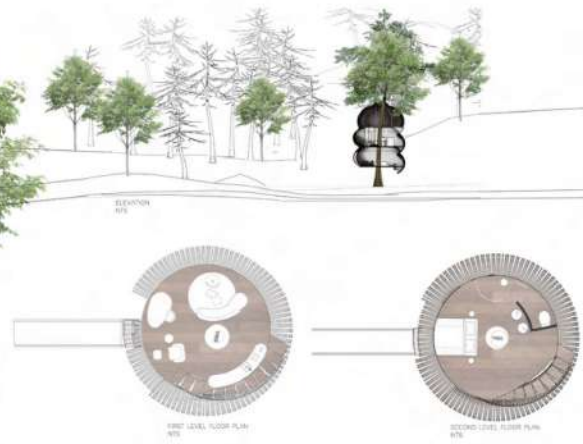


SECOND LEVEL FLOOR PLAN  
NTS

# THE HELICAL ORIGINAL BOARD



**MISSION**  
 To create the world's first helical park building that  
 serves as a multi-use facility in the heart of the park. The building will  
 be a landmark structure that will serve as a focal point for the park and  
 provide a space for visitors to enjoy the park's amenities. The building will  
 be a multi-use facility that will serve as a focal point for the park and  
 provide a space for visitors to enjoy the park's amenities.



AIRSTREAM

# SIMPLICITY

BRIEF: You have been tasked with designing and conceptualizing an inspiring Airstream trailer with an international aesthetic.



# SIMPLICITY GENERAL PERSPECTIVES



KITCHEN PERSPECTIVE



HALLWAY PERSPECTIVE

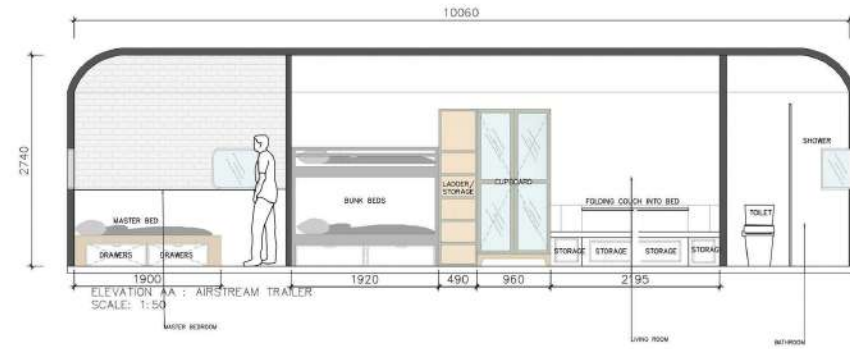
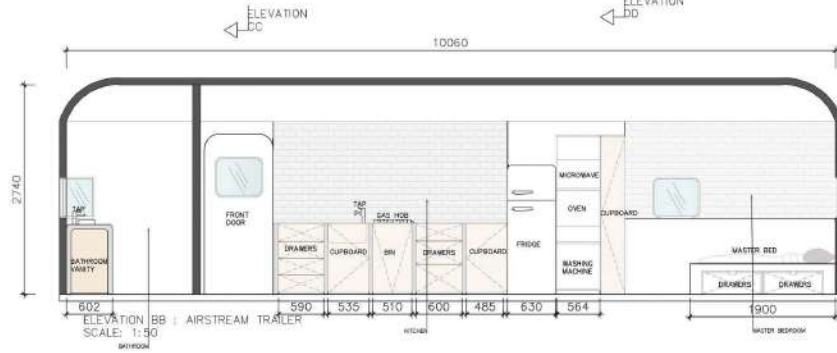
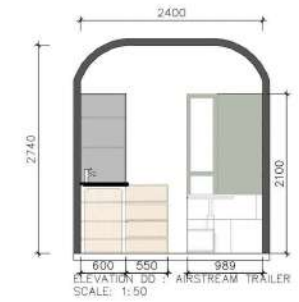
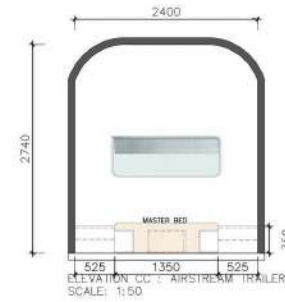
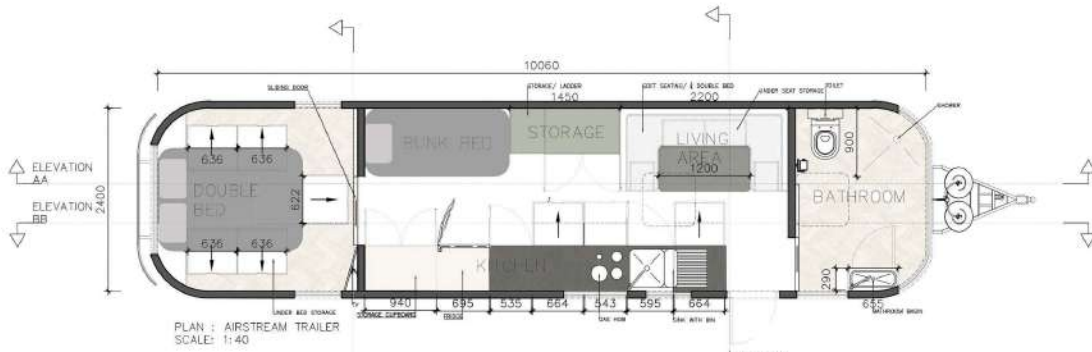


BATHROOM PERSPECTIVE



BUNK BED PERSPECTIVE

# SIMPLICITY FLOORPLANS



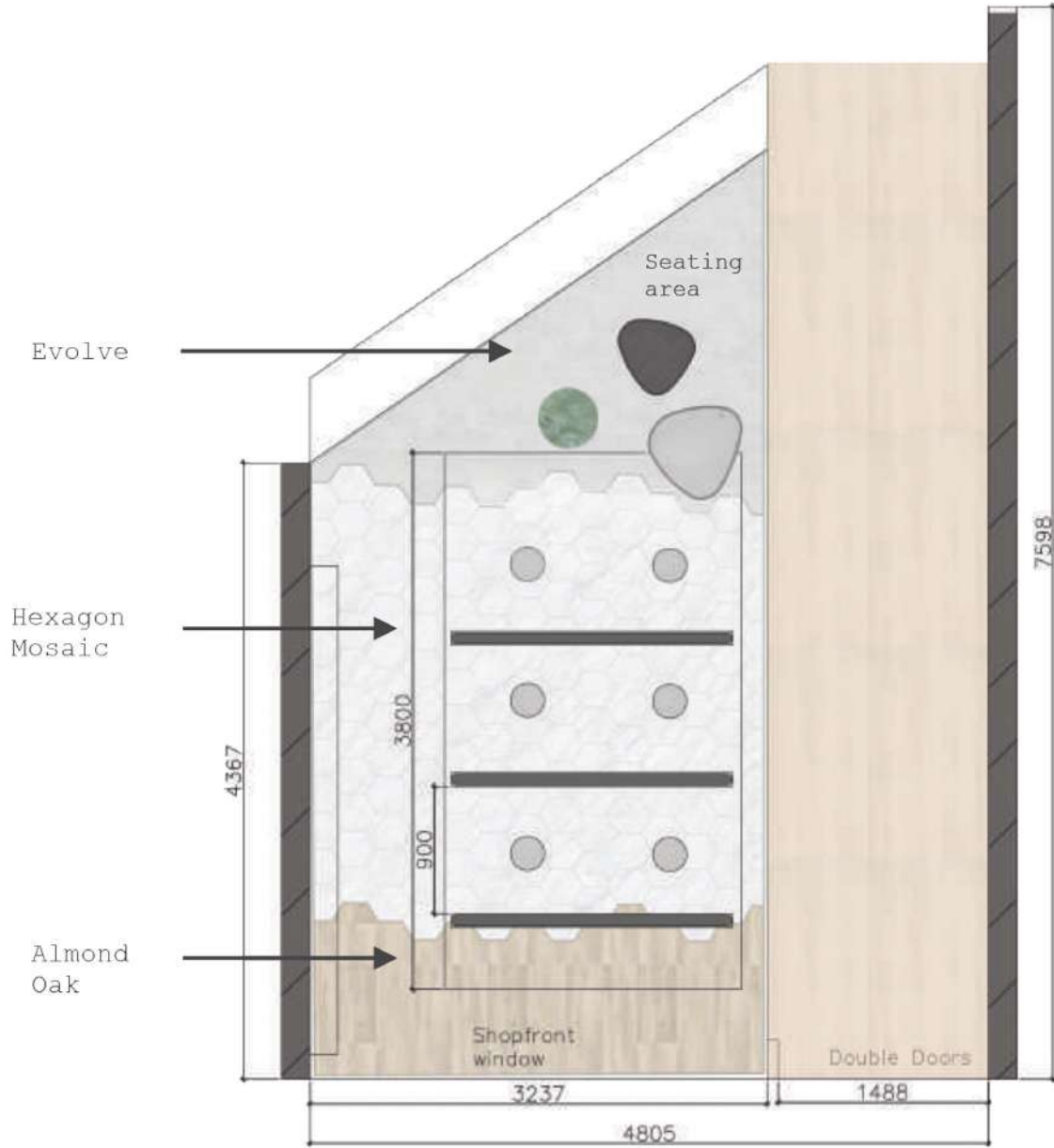
You and your partner have been appointed by Florstore OnTrend, a reputable and professional provider of exclusive home finishing products, to design and create an inviting space where visitors and guests to their new showroom in Sea Point; will be greeted as they enter and await further assistance.



# F L O R S T O R E   G E R N E R A L   P E R S P E C T I V E S



# F L O R S T O R E F L O O R P L A N S



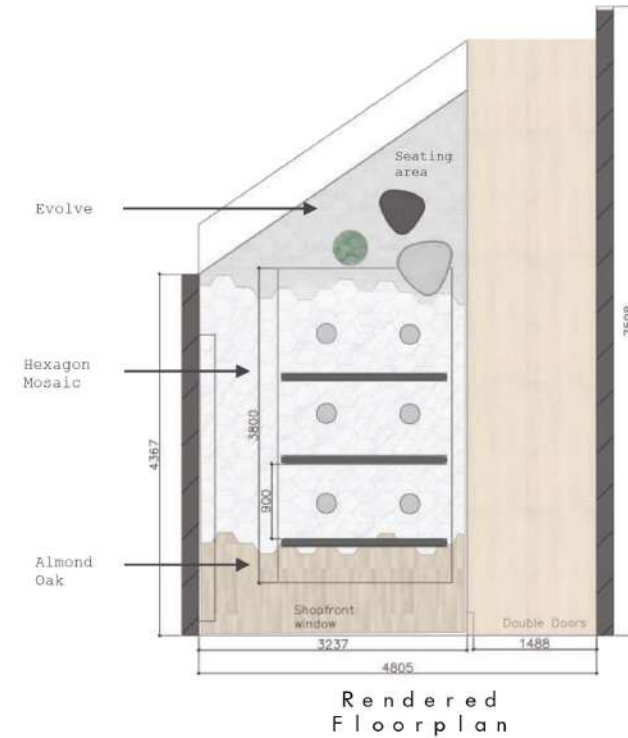
Rendered Floorplan



# F L O R S T O R E ORIGINAL BOARD



The concept behind the design is a neat vertical space that customers can walk around and view all the materials offered. While also being eye catching and easy to follow.



## Aspen Flooring



Alpine Oak



Almond Oak

## Belgotex



Algarve



Fully Woke

## WOMAG



Alps White



Hexagon Mosaic

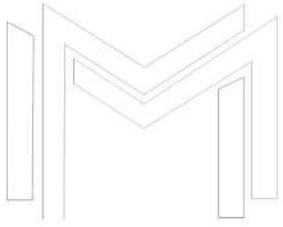
## Tile Toria



Bisel

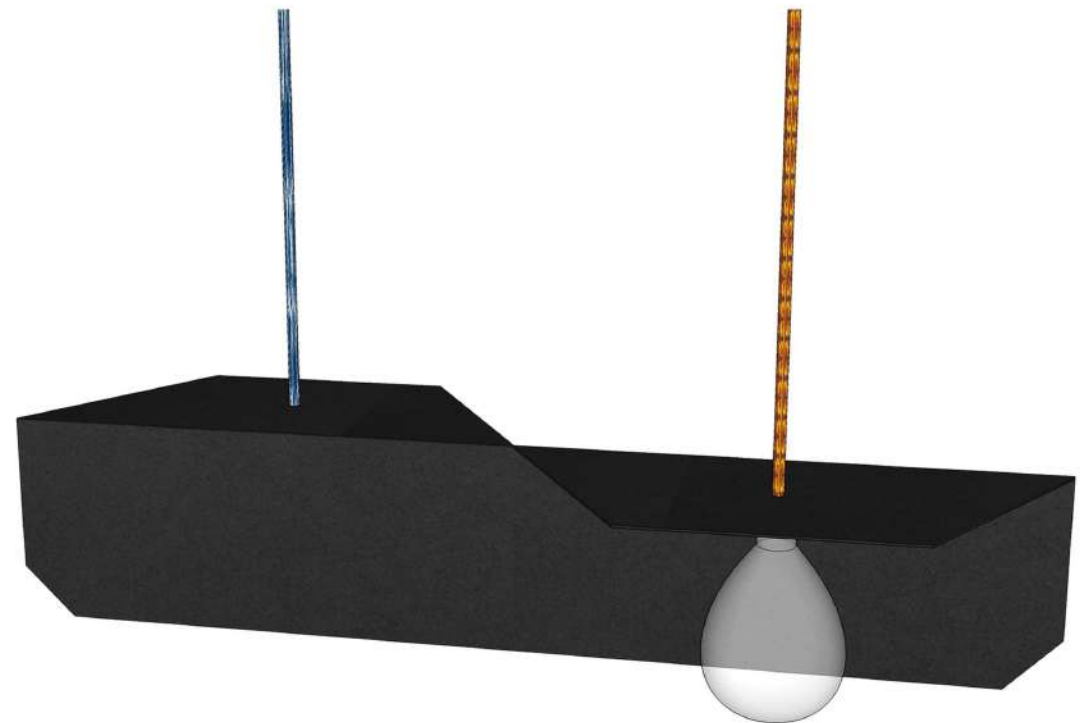


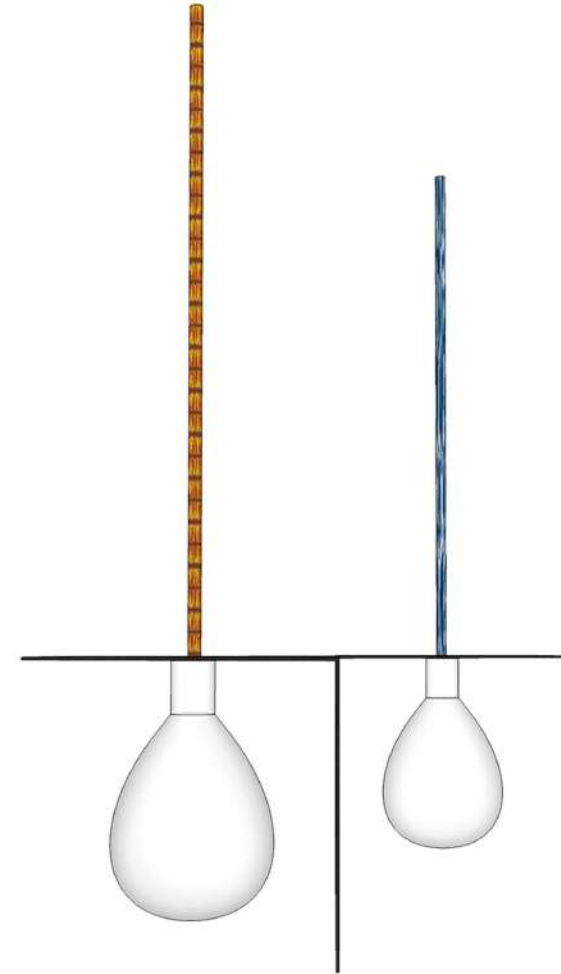
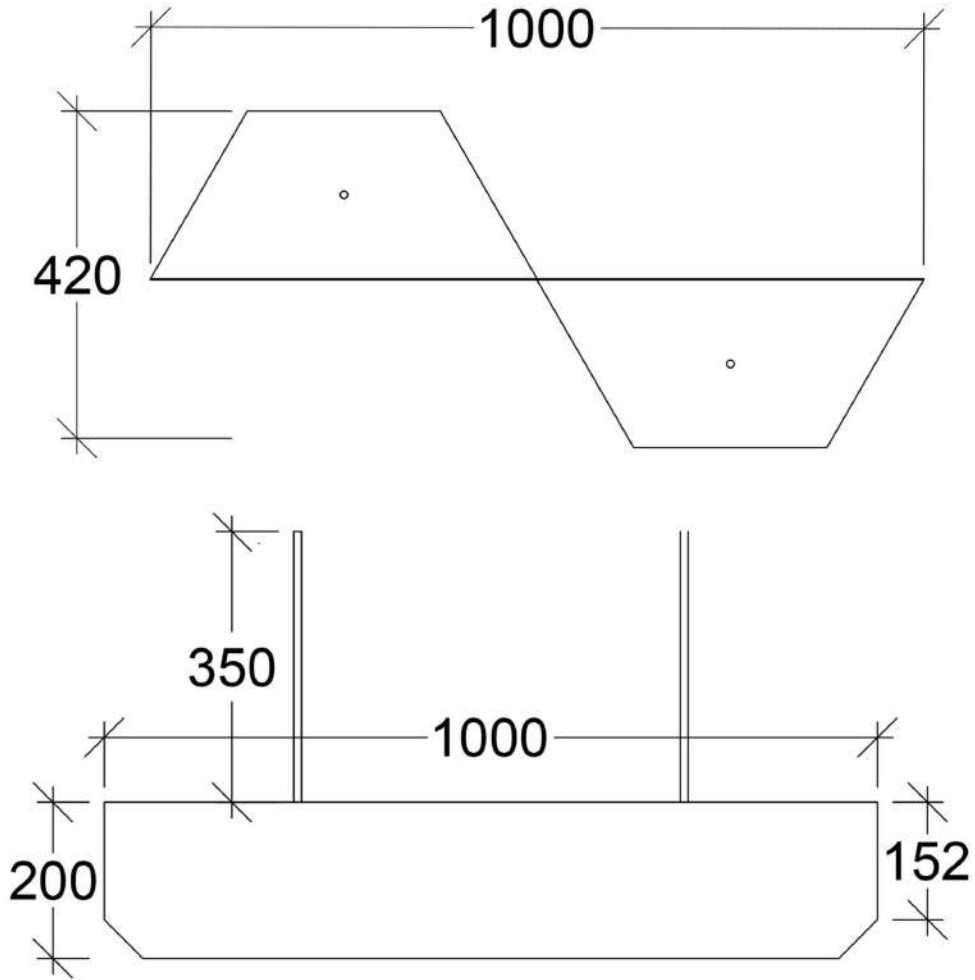
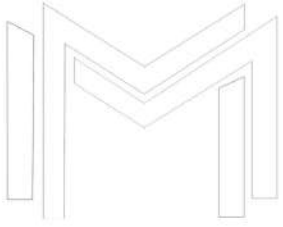
Matt Muir & Paige Van Rensburg

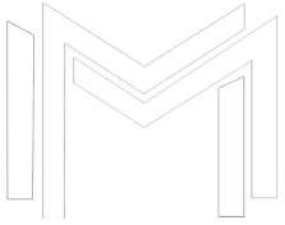


**BRIEF:** Design + create a working Pendant Light that will be incorporated into your restaurant project. This light may be positioned anywhere in your space. You are free to play with a variety of materials and techniques when designing the light, however, be sure that the design of this product relates to your restaurant interior.

**Product:** The Half and Half Light is made from a single flat piece of mild steel that is laser cut and bent into the light shape, with one smoky led bulbs on either side and two different colour hounds tooth fabric cables supporting and supplying power.







Stone Grey and Ocean  
Hounds Tooth



Red and White Hounds Tooth



LED Smoky Light Bulb



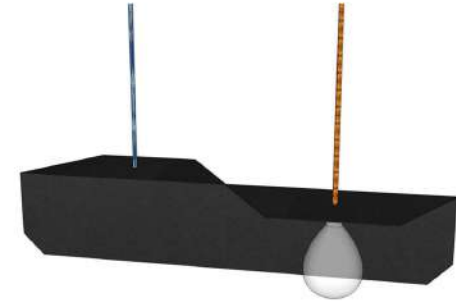
Powdercoated 2mm  
mild steel



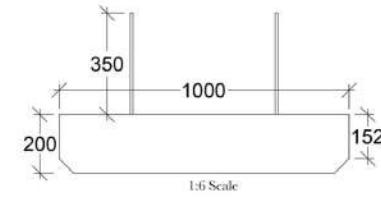
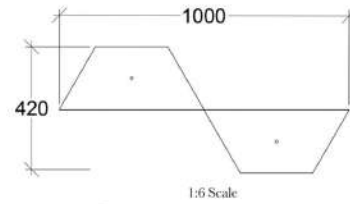
The Half and Half Light is made from a single flat piece of mild steel that is laser cut and bent into the light shape, with one smoky led bulbs on either side and two different colour hounds tooth fabric cables supporting and supplying power.



Light Perspective 1



Light Perspective 2



Stone Grey and Ocean  
Hounds Tooth



Red and White Hounds Tooth



LED Smoky Light Bulb



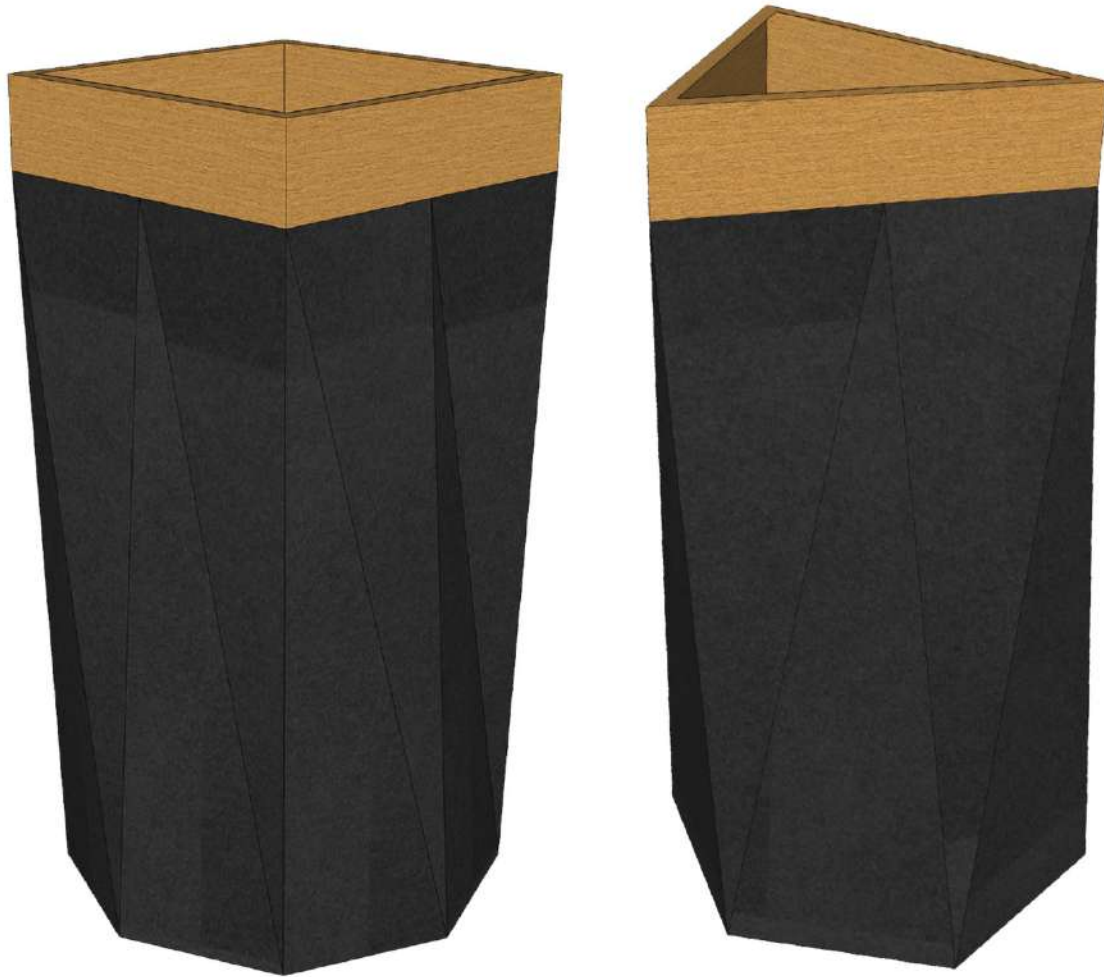
Powdercoated 2mm  
mild steel



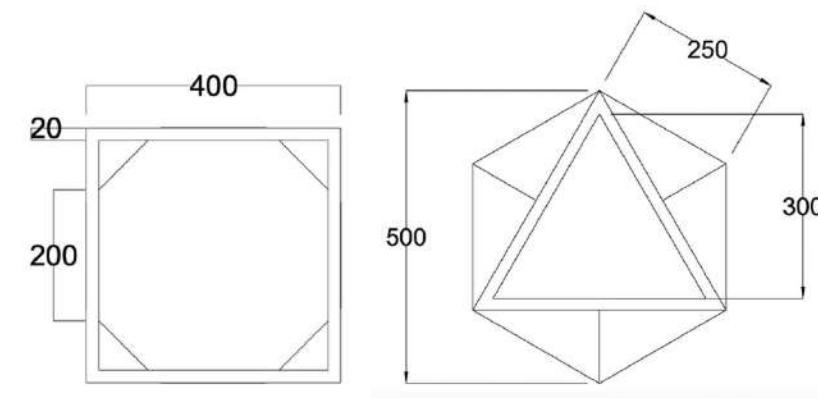
To design a set of 2 to 3 planters that encompass the look and feel of Plantr's aesthetic. The set must contain a size variety.

- The planters should be as environmentally friendly as possible. See guidelines for bringing sustainability into your designs from the Green Building Council SA below.
- The maximum of 3 materials may be used (excluding fixtures).
- Each planter in the set shall not be smaller than 400mm (wide) x 400mm (deep) x 600mm (high)
- Each planters in the set shall not be larger than 1400mm (wide) x 600mm (deep) x 1200mm (high)
- The manufacturing cost must not exceed R4,000 Incl. VAT.
- The planters must be designed to fit our self-watering liners. Drawings and dimensions are below, and 3D models are available for download.

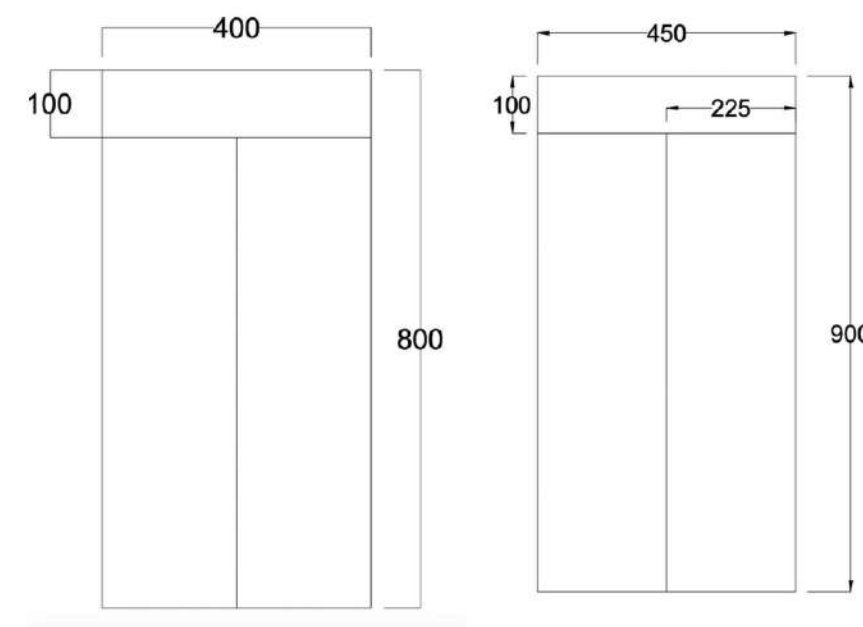




Top Plan View



Side Plan View





Plantr



Powder Coated 2mm laser cut steel



Weather treated 20mm oak trim

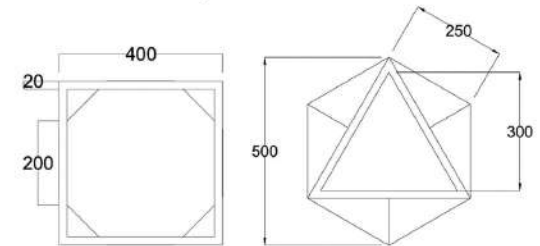
## Simplicity

I have created a minimalist/industrial style while still making it pleasing to look at and modern enough to be in fashion for many years to come.

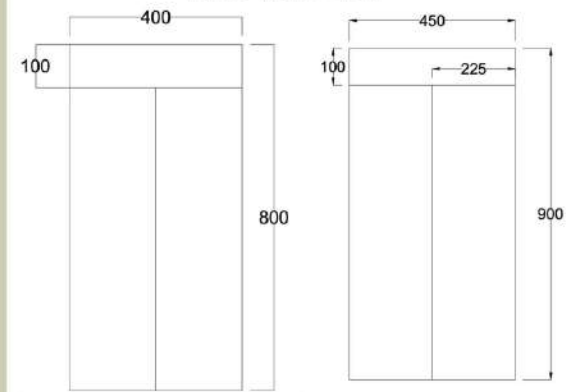
This geometric design comes from the base being an octagon/hexagon and the top being a square/triangle with the body morphing from one to the other.



Top Plan View



Side Plan View



All materials used are Sustainable Materials