



Iryna Khanenko

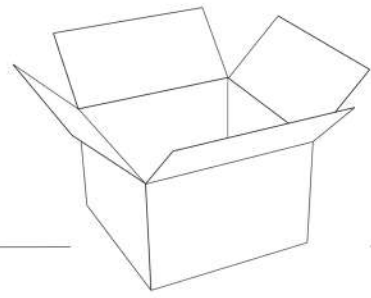


IRYNA KHANENKO

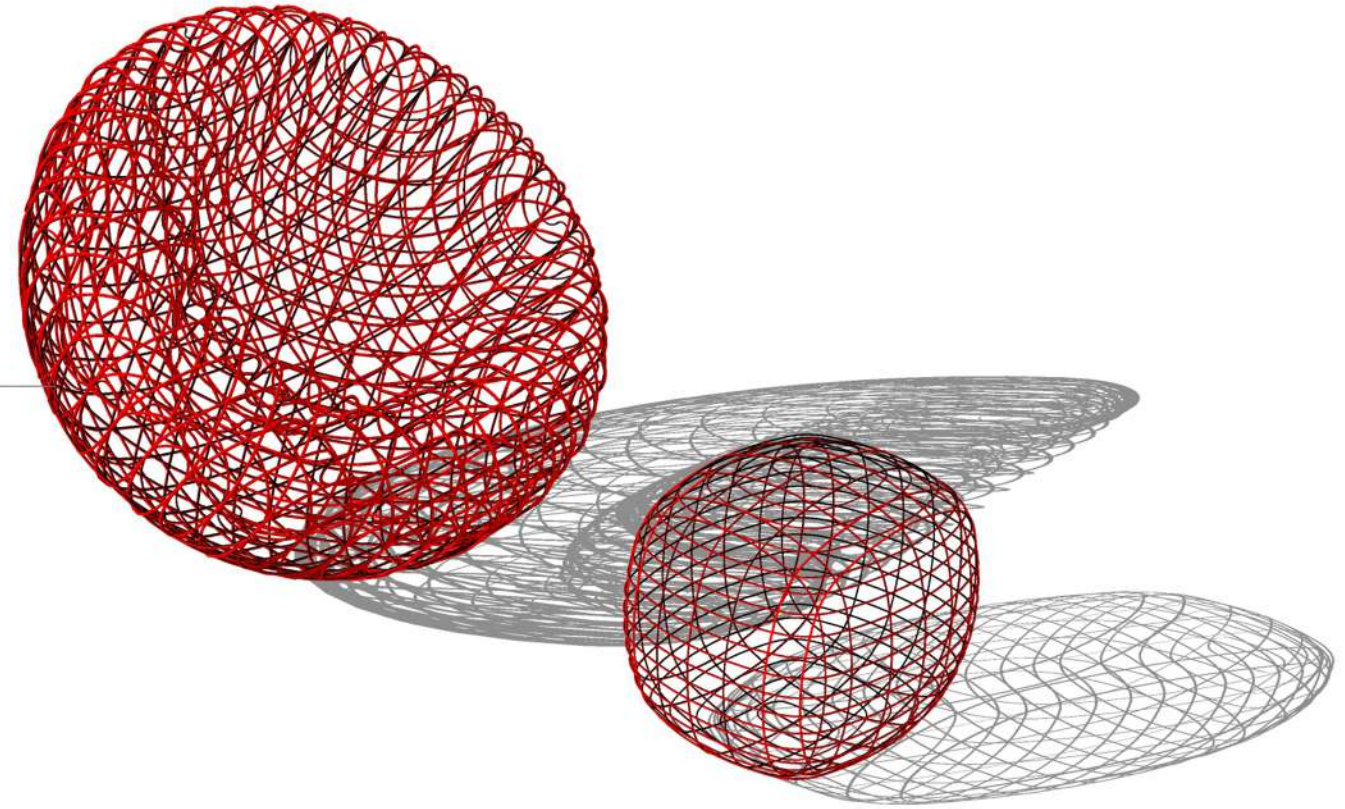
"Underneath all I design lies the solid belief that
THE DETAIL IS THE KEY TO PERFECTION..."

INTERIOR DESIGN PORTFOLIO | 2021

DESIGN TIME SCHOOL OF INTERIOR DESIGN



"Think Out of the Box"



01	pg. 05 CAESARSTONE SOUTHERN RIGHT / NOVEMBER 2021
02	pg. 13 PLANTR TWIN BARON / SEPTEMBER 2020
03	pg. 21 SPECTACLE ON BREE / MAY 2021
04	pg. 29 PG BISON FREEDOM QUARTER / JULY 2021
05	pg. 37 BEACH FRONT HOTEL ECO-SHORE / NOVEMBER 2021
06	pg. 47 BOXWOOD PROPERTY FUND PICBEL / MARCH 2021

CONTENTS PAGE

pg. 52 BC JOINERY / MARCH 2021	07
pg. 53 BC DRAWING PACKAGE / MARCH 2021	08
pg. 57 APARTMENT 4 ON 0 / AUGUST 2020	09
pg. 63 GENKO FOILAGE COLLAGE TEXTILE DESIGN / JULY 2020	10
pg. 65 LA BELLA PENDANT LIGHT DESIGN / OCTOBER 2020	11
pg. 68 INTERIOR HAND RENDERING / FEBRUARY 2020	12

REUSE

DESIGN CHALLENGE

Drawing from the concept of adaptive reuse your clients, the V&A Waterfront, are looking to reactivate the Collier Jetty. It straddles the tourist-driven industry provided by the Waterfront mall and The Nelson Mandela Gateway to Robben Island, and the industrial function of boat repair at the fish quay, as well as several marine and logistical industries.

Drawing from the Concept of Adaptive Re-use your clients the V&A Waterfront are looking to reactivate the Collier Jetty as it straddles the tourist driven industry provided by the Waterfront mall and The Nelson Mandela Gateway to Robben Island and the industrial function of boat repair at the Fish quay and several marine and logistical industries.

The Collier Jetty used to have a gantry that housed four conveyor belt systems that delivered grain from the shipping elevator to the ship loaders, to be transported to the export markets and was a significant link to the sea.

The gantry has subsequently be demolished but the jetty still stands and provides an opportunity to create a corridor from the Silo District to the sea, allowing views of the working Fish Quays and the city.

Your challenge is to design a journey along the jetty that houses various programs around the concept of what the historical significance of the jetty was. This would be in the form of a fish market to reignite the industry with an exterior intervention and a restaurant with a specific exterior and interior aesthetic.

One must not be overwhelmed by the size of the jetty (220m x 22.5m) and utilise the end of the jetty with the remaining tower structures for the building intervention.

Emphasis should be placed on the concept of Adaptive re-use of the Site and the remaining crane and tower structures to be retained, utilised and or displayed as an artefact in the new intervention.

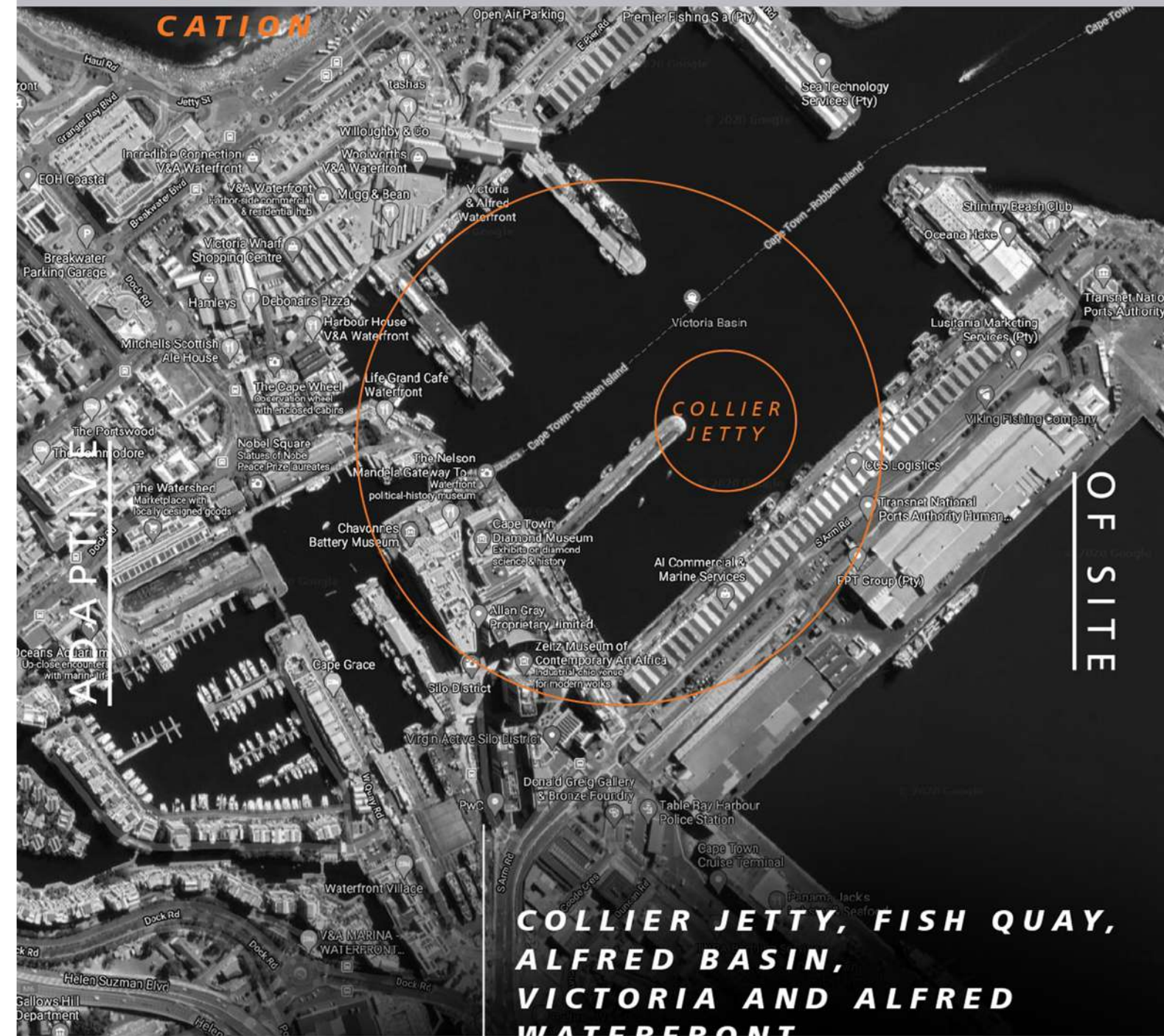
ADAPTIVE

OF SITE

CAESARSTONE



LOCATION



**COLLIER JETTY, FISH QUAY,
ALFRED BASIN,
VICTORIA AND ALFRED
WATERFRONT,
CAPE TOWN, 8001.**

33.9061° S, 18.4245° E



CAESARSTONE



Student Designer 2020/2021

3RD PLACE

CONGRATULATIONS

IRYNA KHANENKO

Design Time School of Interior Design

On your outstanding achievement
and contribution to the future of South African design.
Presented in Cape Town on the 4th of November 2021.

Megan Noel
Head of Marketing, Caesarstone SA

CAESARSTONE
STUDENT DESIGNER
2020/2021





CAESARSTONE

SOUTHERN RIGHT



The Design of SOUTHERN RIGHT connects the Heritage of the Collier Jetty by using parts of the original steel structures found on the jetty as structural elements whilst also raising Marine conservation awareness through it's industrial Whale shaped structure.

Marine conservation is key in the reverse of climate change and to restore the carbon levels in our atmosphere.

The purpose of Southern Right design is to rase understanding of Whales.

Whales are protecting the entire Planet, as they release Phytoplankton, which absorbs 4 times more Carbon Dioxide than Amazon forest does yearly. It's 85% of all the oxygen we breath.

SOUTHERN RIGHT will be making a mark in the magnificent Victoria Basin, a new tourism attraction for locals and visitors to South Africa.

No Ocean - no Life...No Ocean - no Us.

SOUTHERN RIGHT

caesarstone
ADAPTIVE REUSE



NET ZERO



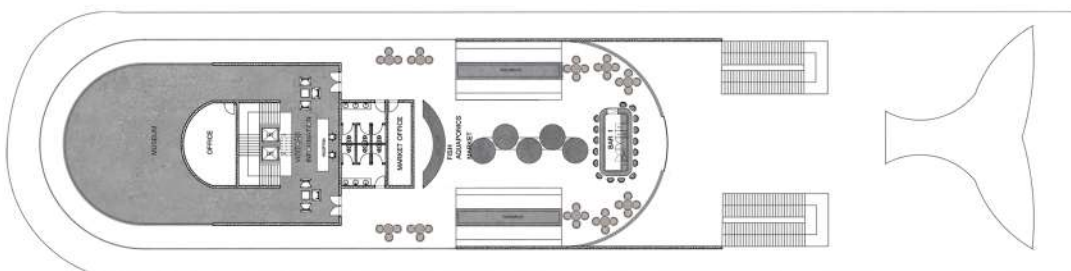
Ocean Conservancy



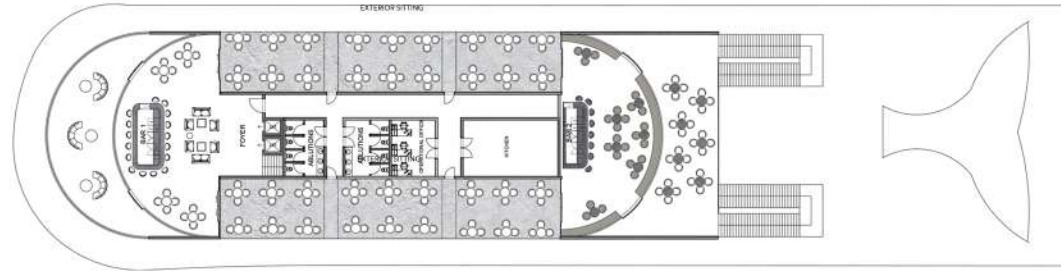
SOUTHERN RIGHT | CURVED STEEL SOLAR ROOF



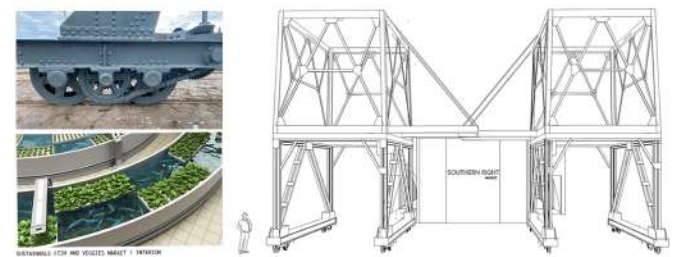
FIRST IMPRESSION | ENTRANCE TO SOUTHERN RIGHT FISHMARKET



GROUND FLOOR PLAN: NTS



FIRST FLOOR PLAN: NTS



TOWERS CUT IN HALF AND USED AS NEW SUPPORT FOR BOTH LEVELS



AQUAPONIC SOUTHERN RIGHT FISHMARKET



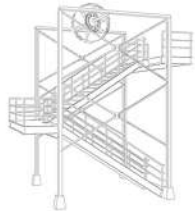
TOWER STRUCTURE USED AS A FISH DISPLAY



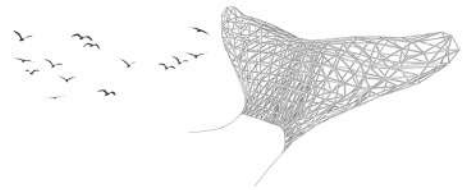
VISITORS INFORMATION CENTRE



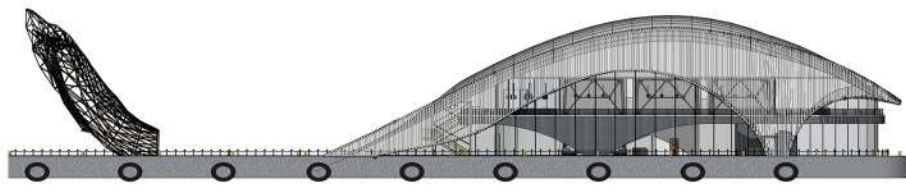
OCEAN CONSERVANCY IN THE HEART OF CAPE TOWN FISH QUAY



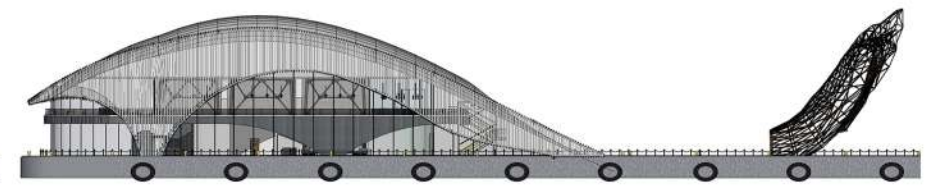
TOP HALF OF THE TOWERS USED AS A NEW STAIRCASE



REUSED STEEL | ABSTRACT ART | WHALE TAIL STATUE



EAST ELEVATION: NTS



WEST ELEVATION: NTS



RESTAURANT EXTERIOR



RESTAURANT INTERIOR | REUSED FURNITURE



OYSTER BAR | VICTORIA BASIN VIEW



BRIEF

- To design a set of 2 to 3 planters that encompass the look and feel of Plantr's aesthetic. The set must contain a size variety.
- The planters should be as environmentally friendly as possible. See guidelines for bringing sustainability into your designs from the Green Building Council SA below.
- The maximum of 3 materials may be used (excluding fixtures).
- Each planter in the set shall not be smaller than 400mm (wide) x 400mm (deep) x 600mm (high)
- Each planters in the set shall not be larger than 1400mm (wide) x 600mm (deep) x 1200mm (high)
- The manufacturing cost must not exceed R4,000 Incl. VAT.
- The planters must be designed to fit our self-watering liners.

CONCEPT

'NATURE INSPIRED BY DESIGN...'

This design is inspired by a geometrical shape triangle and the main motivation is to maximise the use of a living space (tricky corners and other wasted spots).

Planter sets can be arranged in many different triangle combinations.

Twin Baron can be a free standing set or a hanging set with an easily tools free removable railing hook. It can be used both outdoor and indoor.

The outdoor option has a simple drainage system allowing rain water to escape.

This design proposal includes 2 size variations to suit a small round self-watering liner and medium round size liner.

New triangle self-watering liners would suit it best and can be an additional design.

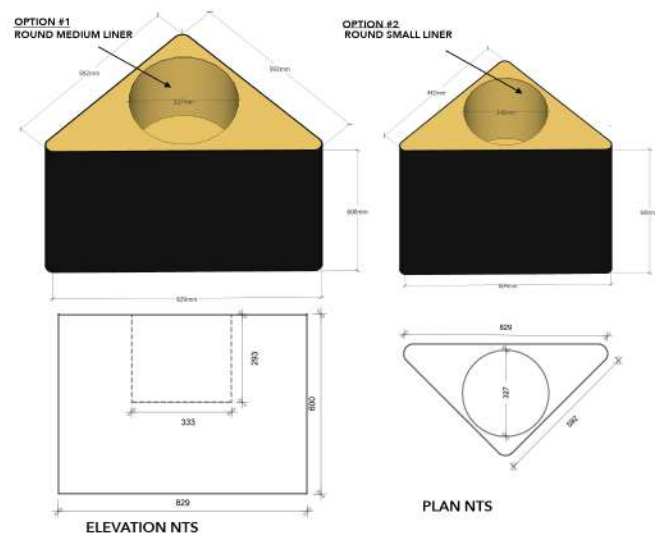
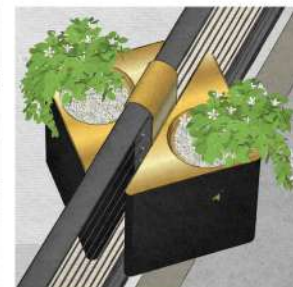
Proposed material is powder coated aluminium, matt black with gold or silver top detail for sleek minimalist look and extra tough Cape weather protection.

TWIN BARON

'NATURE INSPIRED BY DESIGN...'



This design is inspired by a geometrical shape triangle and the main motivation is to maximise the use of living space (tricky corners and other wasted spots).
 Planter sets can be arranged in many different triangle combinations.
 Twin Baron can be a free standing set or a hanging set with an easily tools free removable railing hook. It can be used both outdoor and indoor.
 The outdoor option has a simple drainage system allowing rain water to escape.
 This design proposal includes 2 size variations to suit a small round self-watering liner and medium round size liner.
 New triangle self-watering liners would suit it best and can be an additional design.
 Proposed material is powder coated aluminium, matt black with gold or silver top detail for sleek minimalist look and extra tough Cape weather protection.



TWIN CORNER BARON ARRANGING COMBINATIONS



MATERIALS:



- POWDER COATED ALUMINIUM 100% RECYCABLE AND 100% SUSTAINABLE
- SMOOTH SURFACE COATING
- GOOD IMPACT RESISTANCE
- CORROSION RESISTANCE
- RESISTANCE TO ULTRAVIOLET RADIATION

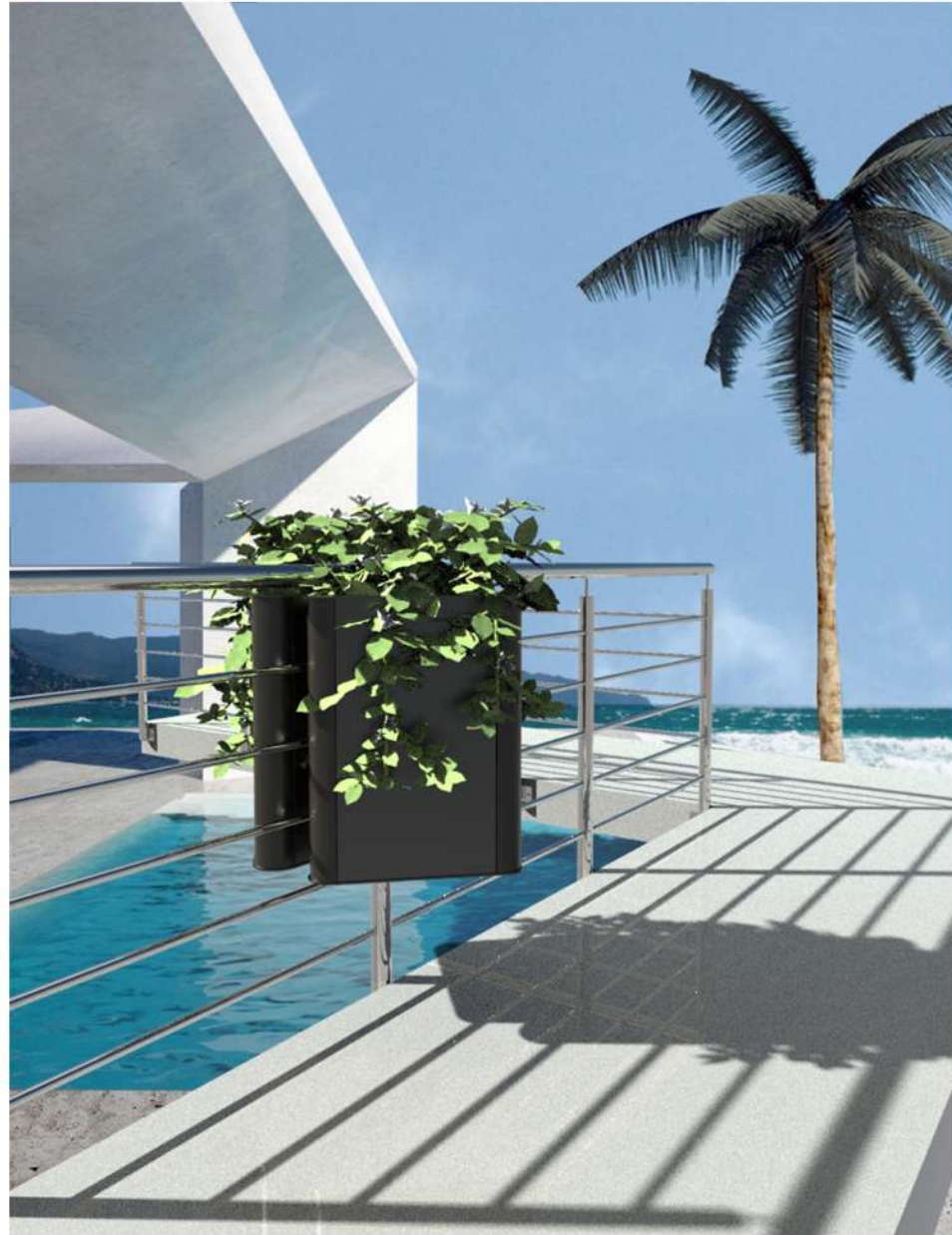
COST ESTIMATE:

MATERIAL	UNIT	PRICE
Aluminium Sheet, 1.22m Long, 3.5kg/m ² , 1.22m x 3mm		
Lots 60+.....	2	R1583.395 per unit
Labour per hour.....	1	R550
Powder Coating.....	1	R350
TOTAL:		R 4,066.79



Cardboard box packaging

TWIN BARON





Plantr Design Challenge 2020

CERTIFICATE OF ACHIEVEMENT

This is to certify that Iryna Khanenko has placed first in The Annual Plantr Design Challenge 2020.

A stylized, handwritten signature in black ink, appearing to read "N. Christy".

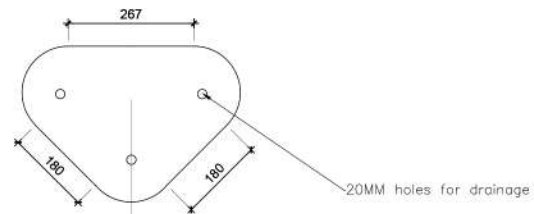
Nicholas Christy



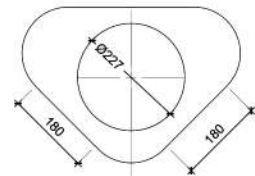
TWIN BARON



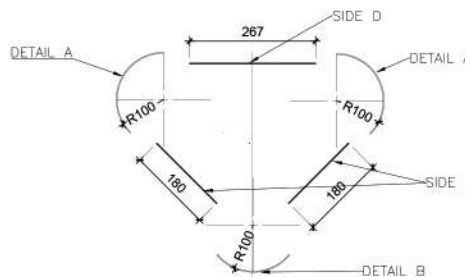
PLANTR | PRODUCT DESIGN



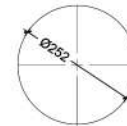
PLANTER BOTTOM PLATE PLAN 2MM STAINLESS STEEL (TO BE LAZERCUT)
SCALE 1:10



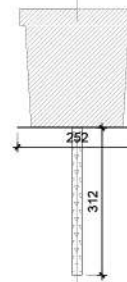
PLANTER TOP PLATE PLAN (TO BE LAZERCUT) 2MM STAINLESS STEEL
SCALE 1:10



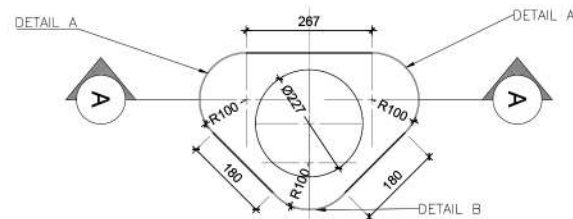
PLANTER EXPLODED PLAN 2MM STAINLESS STEEL
SCALE 1:10



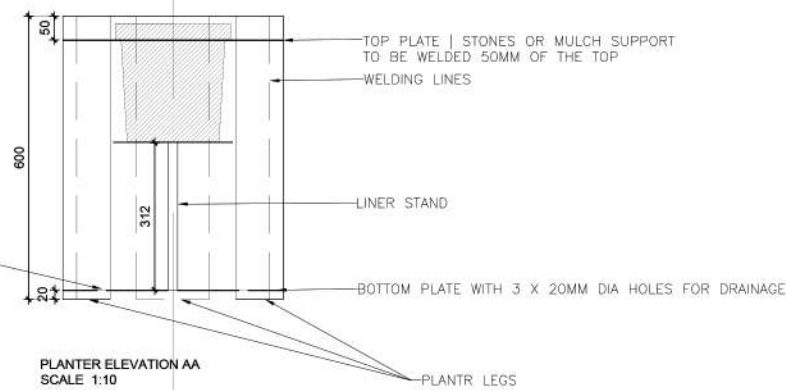
SMALL ROUND LINER 2MM STAINLESS STEEL STAND PLAN
SCALE 1:10



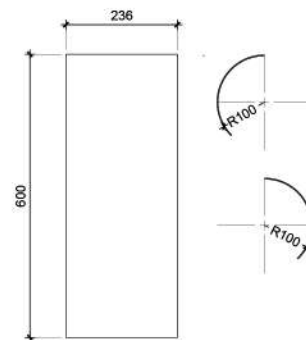
SMALL ROUND LINER STAND ELEVATION
SCALE 1:10



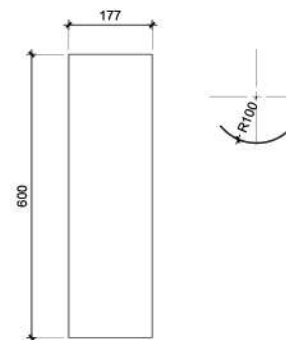
PLANTER OVERALL PLAN
SCALE 1:10



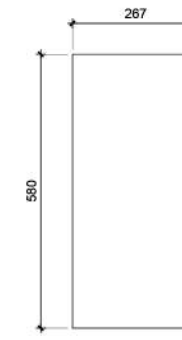
PLANTER ELEVATION AA
SCALE 1:10



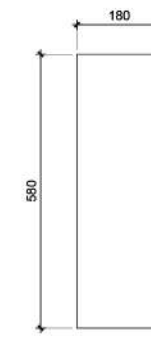
DETAIL A PLAN (TO LAZERCUT 2MM STAINLESS STEEL AND ROLL R100 | 2PCS)
SCALE 1:10



DETAIL B PLAN (TO LAZERCUT 2MM STAINLESS STEEL AND ROLL R100 | 1PCS)
SCALE 1:10



SIDE D | 2MM STAINLESS STEEL PLAN
SCALE 1:10



SIDE C X 2PCS 2MM STAINLESS STEEL PLAN
SCALE 1:10

DRAWING NOTES

DRAWING NOTES

REVISIONS

0	DATE	DESCRIPTION
item	date	description



project title
TWIN BARON
28.11.2021

drawing description
DETAILED PLAN 1:10

drawing number

scale

project number

date

designer
IRYNA K

revision

client approval

VISI / REASONS

12

PLANTING THE SEED

The winner of the Plantr design challenge 2020 has been announced: congratulations to young designer Iryna Khanenko on her stylish, geometrical Twin Baron planter.



This year, the Plantr team launched a challenge for design students that would not only enable them to showcase their creativity, but would also provide them with an opportunity to kick-start their career. According to Plantr founder Nick Christy, the brief called for young designers to submit two or three planter designs in a variety of sizes that would not only embody the aesthetic of the Plantr brand, but also be environmentally friendly, and use a maximum of three materials during the manufacturing process.

The challenge, which was set up in partnership with VISI, the Green Building Council South Africa, the African Institute of the Interior Design Professions and KeyShot Pro, was open to design-school students across South Africa, providing a platform for up-and-coming talent.

After five finalists had been identified, first place was awarded to Cape Town-based Iryna Khanenko for her Twin Baron planter design. "This design is inspired by a geometrical shape - the triangle - and the main motivation is to maximise the use of tricky living spaces such as corners and other 'wasted' spots," Iryna says. "The planters can be arranged in different triangle combinations: Twin Baron can be a free-standing set - or a hanging set that uses an easy, tools-free, removable railing hook. It can be used both outdoors and inside."



WIN WITH VISI Plantr is giving away a Twin Baron planter worth R5 999 to two lucky VISI readers. Go to visi.co.za/win to enter.

PHOTOS: JAN DAS (PORTRAIT); SUPPLIED; WORDS: MICHAELA STEHR

SA'S MOST BEAUTIFUL MAGAZINE

FROM VAN LIFE TO KENYA GLAMOUR

visi

WIN PRIZES WORTH R82 300

SEASONAL WRAP-UP

COVETABLE AND ORIGINAL GIFTING IDEAS



2011 SA R75 (incl. GST) R65 22 (incl. GST) 9 771810 470000

JOANA VASCONCELOS / ROCHE BOBOIS BONNEH COLLAB

SUMMER OF COLOR

OCEAN BLUES, SAVANNAH GREENS, KAROO PINKS & BOLD BOMBOMS



IID

Plantr Design Challenge 2020

How Plantr was born

Growing up with a mother who obsessed over interior design and renovating homes, our living spaces were constantly being changed around and altered, and mom was forever dragging me along to furniture, fabric and trade stores. I didn't realise until after my career in the creative music industry that this had brewed up a natural and subliminal design flair in me. Designing and renovating my first apartment concluded that this was where my passion and future lay. Combined with my love for plants, nature and the outdoors - Plantr seemed like the natural progression for me. I decided to head onto the yachts to save up capital, and after a lot of hard work, research, planning and studying - Plantr was born - Nick Christy.

The Design Challenge | The entities

The Plantr team decided to launch a challenge whereby students of design can not only showcase their design creativity, but have an opportunity where they could gain all the tools and exposure to 'kickstart' their career.

We decided to get in touch with our favourite most influential design entities for involvement. Visi Magazine, IID, GBCSA and Key Shot were just as excited about the project as we were, and took the leap to collaborate and make this challenge a reality.

Each entity shared ideas and added their own aspect to the challenge, making it a fun and unique experience. Lots of lessons were learnt in terms of timelines and planning, which will be carried forward for future design challenges.

We wanted to emphasise the sustainable aspect, which is where the GBCSA has incorporated an element to the competition, ensuring that the

environment in which people and the planet can both thrive. The students needed to take this into consideration when creating their planters and focus on using materials which align in an environmentally friendly aspect.

Visi is an innovative magazine that prides itself on quality and integrity in design and editorial content.

VISI provides a platform to launch and elevate the careers of design students around SA. The winning student will receive a subscription and their design will be featured as a giveaway to one lucky reader.

The IID is dedicated to establishing, promoting and providing expertise, professionalism and high standards throughout the design industry. The IID have created an institute for design students and those within the interior industry. They have provided the ultimate creative network platform; inspiring, connecting and providing the best possible design solutions. The IID will be providing a membership for the winner of this year's Design Challenge.

KeyShot is advanced software made by Luxion, which is designed to bring you real-time 3D rendering that displays your designs instantly and reduces the time to create realistic product visuals. KeyShot has offered the winning student a rendering software license.

The overall challenge

The Design challenge 2020 was a huge success, we had over 60 entries from various students all over South Africa. Every student should be proud of their design as all of the planters were innovative and it was amazing to see all of the young talent we have in our country. Members from each entity judged based

on; innovation and originality, detail, adherence to the original design brief, aesthetic appeal, presentation and the GBCSA had its own sustainability criteria.

Our top five included Katlego Madumo, Megan Goodwin, Iryna Khanenko, Sarah Sperry and Sophonia Mosethe - all of these students had to go into phase two, whereby they had to make prototypes of their designs. We know a lot of blood, sweat and tears went into these planters and it was very difficult to do the final judging as each planter was so unique. There could be only one winner and after a second round of judging - our winner is Iryna Khanenko with her planter Twin Baron. A huge congratulations to Iryna! We cannot wait to see what the Plantr 2021 Design Challenge holds.

Twin Baron | The Winner

"This design is inspired by a geometrical shape triangle and the main motivation is to maximise the use of living space (tricky corners and other wasted spots). Planter sets can be arranged in many different triangle combinations. Twin Baron can be a free-standing set or a hanging set with an easily tools free removable railing hook. It can be used both outdoor and indoor.

The outdoor option has a simple drainage system allowing rain water to escape. This design proposal includes 2 size variations to suit a small round self-watering liner and medium round size liner. New triangle self-watering liners would suit it best and can be an additional design. Proposed material is powder coated aluminium, matt black with gold or silver top detail for a sleek minimalist look and extra tough Cape weather protection".



THE CONICA

VISIT OUR SHOWROOM
The Palms Décor & Lifestyle Centre
145 Sir Lowry Rd
Woodstock | Cape Town



THE AFRICAN INSTITUTE OF THE INTERIOR DESIGN PROFESSIONS

Iryna Khanenko

I have always considered myself to be an artist, designer, innovator and explorer. I love collaborating with the people, sharing ideas and the things that inspire me to make the world a beautiful place.

I was born on 12 August 1979 in Kyiv, Ukraine.

At the end of my studies in Kiev's Physics and Mathematics High School I won the final exam competition and I was automatically enrolled into the Ukrainian National University of Civil Aviation in Electrical Engineering.

After a few years at University, I decided to pause my studies to explore South East Asia, China and Europe. During this time, I found work in the advertising industry as a production manager and line producer. It was here that I discovered my passion for creativity and South Africa. In 2007 the film industry brought me to South Africa.

In 2010 I graduated from the Ukrainian National University of Civil Aviation and have a bachelor's degree in Economics and Entrepreneurship under my belt.

Being a businesswoman, I always had the yearning to be more intellectual and to explore my passion for creative fulfilment. Having a strong work ethic and being a perfectionist, I push myself as I am never, ever satisfied with the status quo.

To me, good design realises the potential of any space. It involves considered choices teamed with a sense of bravery and sometimes quirk. As a designer, I have a sound understanding of how interior spaces come together, from the architectural elements, to the furniture and soft furnishings that fill it. Colour palette, material choice and finishes are all equally important - each element is essential to creating one cohesive look that is both resolved and innovative.



On a personal level, I have an immense appreciation for a range of design periods and styles. For me, spaces truly work when balance is created through contrast. They should tell a story about the people who inhabit them.

My passion for diversity and progress lights the fire beneath everything I do.

Currently I am a full-time design student, motivated by my love for learning and succeeding as I strive to become an outstanding and successful woman in today's society. With the definitive goal of becoming a professional designer, I am currently completing my first year of the Advanced Interior Design Diploma Course at Design Time School of Interior Design, Cape Town.

Thanks for spending your time learning more about me. We may be future collaborators, partners, or friends!

www.iidprofessions.org.za



Spectacle

ON BREE



Spectacle on Bree

BRIEF

The all-day cafe & bar on the ground floor will serve breakfast from an extensive menu, from 7am on a weekday and a more leisurely 8am at the weekend. For lunch and dinner we will offer the choice of a la carte menus inspired by the grand cafes of Europe. Every afternoon, classic afternoon tea will be served, whether for a traditional cream tea or a celebratory Champagne alternative. The bar will open from midday till late, serving classic cocktails with an extensive wine list with a friendly setting catering to the local Cape Town nightlife scene.

The shop will offer the experience. To be explored for the perfect present or indulgent treat from our pastry kitchen.

The brasserie on the second floor will be a classical French brasserie with its own separate entrance from the street. Making great use of the high volumes the building has to offer, original floorboards, floor to ceiling windows, and massive walk in safe that will be converted into a wine cellar, leather banquettes, white linen, crystal glassware, chandeliers, art on the walls, extensive wine list, lounge & bar. Bringing back the old and original way of cooking and serving food, when the Maitre'd hotel was the celebrity, mixing and finishing dishes table side, cheese and desert trolleys. Bringing back all the beautiful classics but in our modern way with lots of theatre.

The private club on the third floor with its own private entrance and lift, will be Cape Town's most unique, modern social club. Members will be made up with leading artists, entrepreneurs, philanthropists and other individuals from a range of interesting fields. The club will be a place members will love to wine and dine, relax, entertain or simply interact with a stimulating crowd. In addition to hosting engaging events from fine art exhibitions, readings by leading authors to wine maker tastings, the club will also offer a whiskey corner and wine locker room for members 'storage', a private dining room, meeting room and roof-top deck with a view of Signal Hill. Membership will be limited and exclusive.

CONCEPT

SPECTACLE its an exclusive all-day cafe & bar, restaurant, local organic produce shop & private club in the Grand French European tradition on Cape Town's Iconic Heritage Square

Dining in Spectacle is as much about interior designs as it is about excellent food. This new hot spot set new standards for both.

At Spectacle it's always celebration time and the endless flow of food is mixed with a bona fide nightclub atmosphere.

The setting is comfortable and chic, and the interior design intriguing, moody and modern, but respectful of the historical elements contained in the building. The delicious cusine is French-inspired, and the menu contains many comfortable classics - often with a twist.

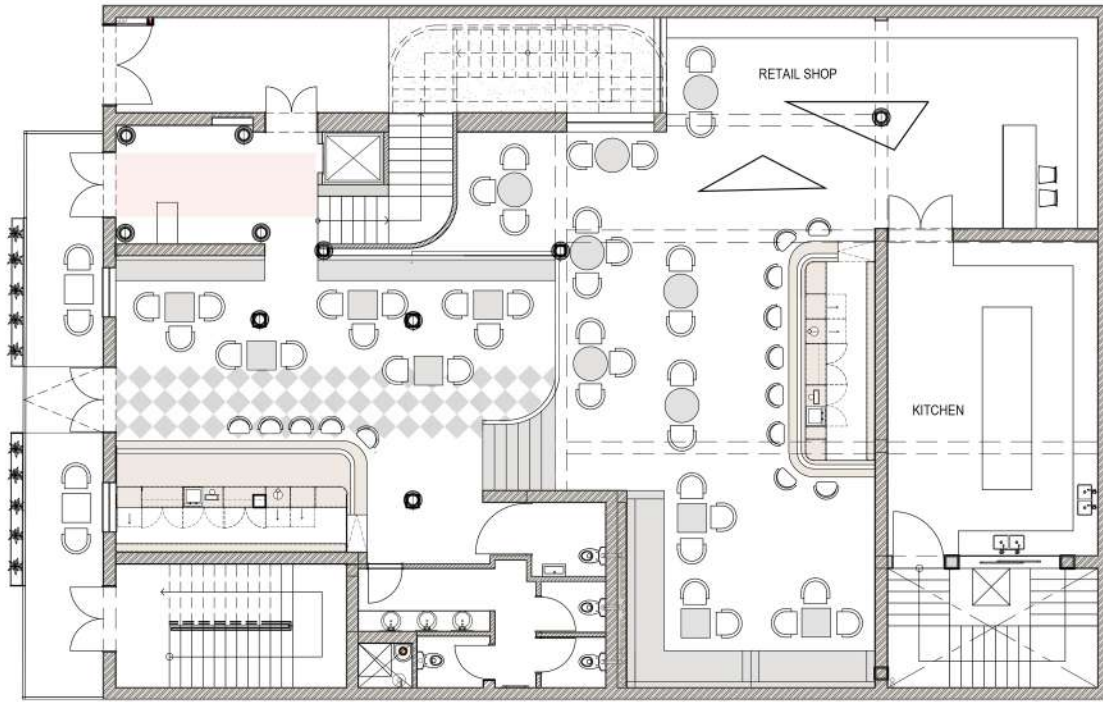
The food is prepared simply, and a wood-burning oven is in use in the open kitchen.

The treed terrace has a stellar view of the Lion's Head and Signal Hill, and is the ideal place to meet friends, have dinner, or just pop in for a drink.

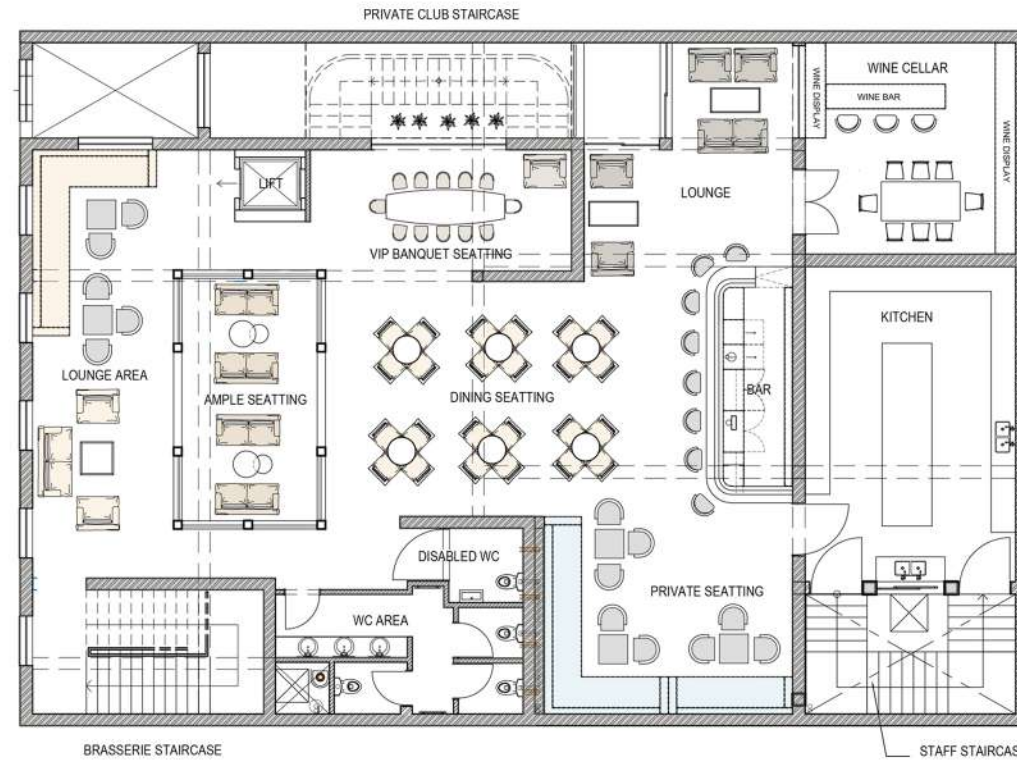
Spectacle on Bree



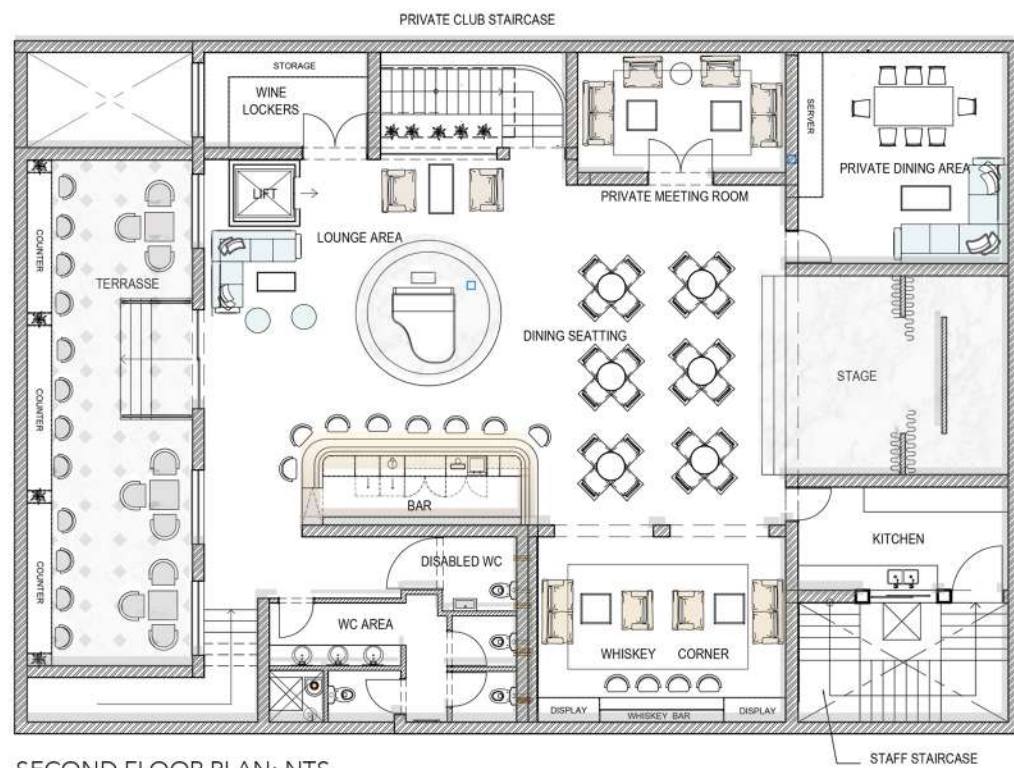
Spectacle on Bree



GROUND FLOOR PLAN: NTS



FIRST FLOOR PLAN: NTS



SECOND FLOOR PLAN: NTS

Spectacle on Bree



PÂTISSERIE



RETAIL STORE



VIP BANQUET SEATING

Spectacle on Bree



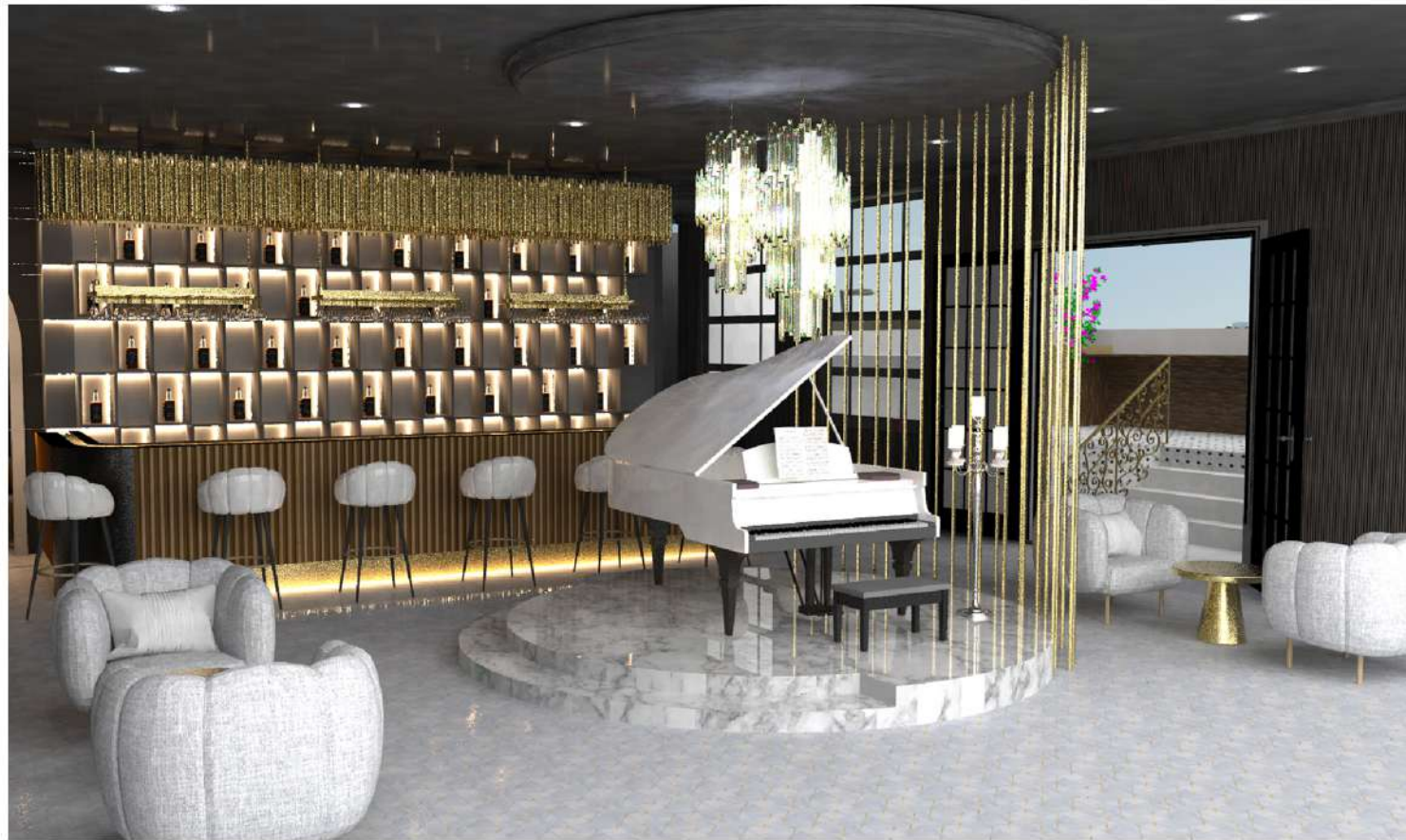
BRASSERIE | AMPLE SEATING

Spectacle on Bree



AMPLE SEATING | FIRST FLOOR

Spectacle on Bree



PIANO BAR



WHISKEY CORNER | PRIVATE CLUB

It's
PG Bison.Brought to you by the PG BISON
1.618 EDUCATION INITIATIVE**2021 Brief**

MOBILITY AND THE HERITAGE ROUTE

With sincere thanks to Henk Marais, Director, Connect Architects
for his time and effort in sourcing, investigating and collaborating
on the writing of this brief.**Towards a
World Connected****2021****Brief**You must **design the Strand Street Quarry node** for the Heritage Route.**Thought starters**

- **What** does your design offer that makes it a big drawcard for tourists?
- **Consider current pandemic protocols** in future-proofing your design.
- **How** does the site and its context inform your design?
- **How** do you consider inclusive design in your solution?
- **Consider environmentally responsible** and sustainable materials and methods.
- Do not fixate on whether this requires an architectural or interior design intervention. Use your strengths to design the experience, considering the internal and external needs to execute against the brief.

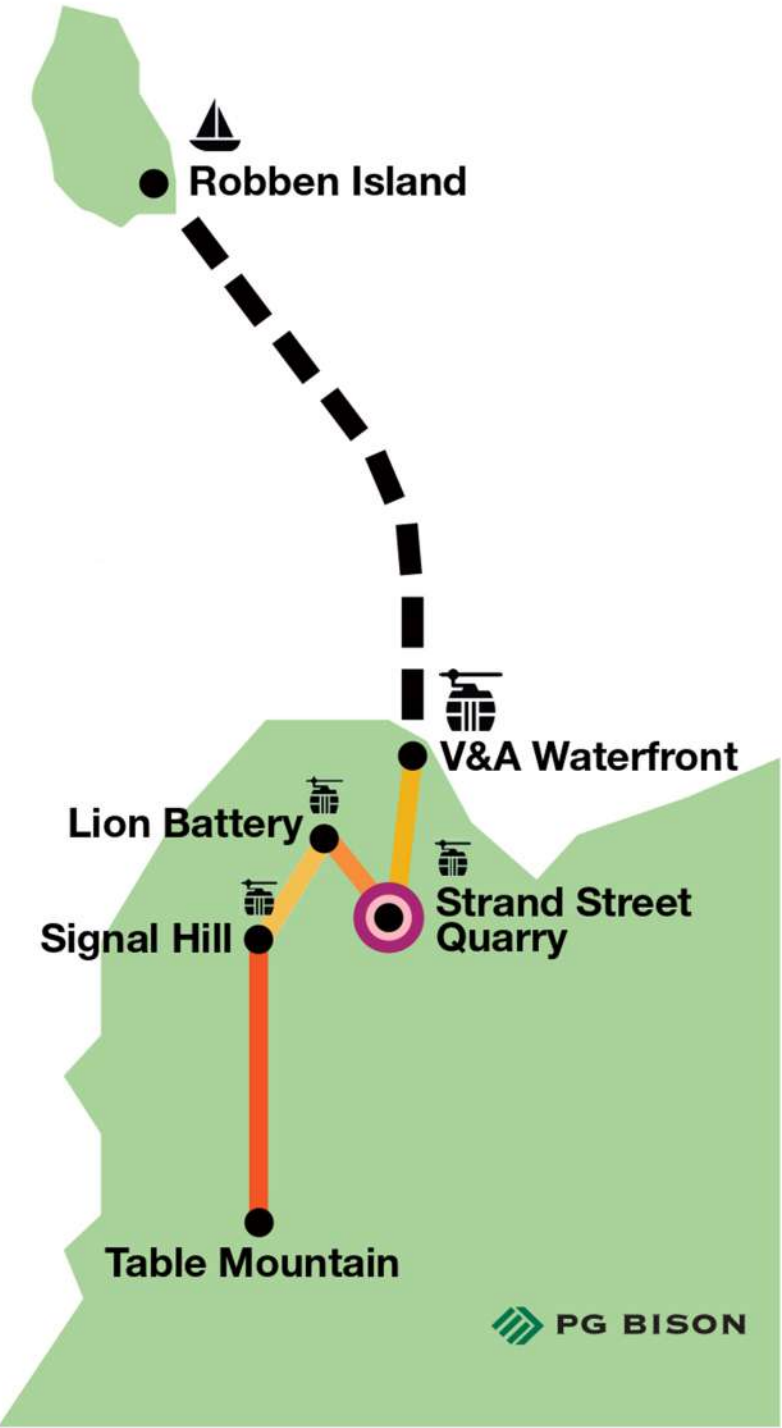
Your design must include:

- A pedestrian entrance point with bus drop-off area adjoining Strand Street.
- A learning centre.
- Tourist retail, a visitor information centre and ticket sales for the **Heritage Route**.
- The tourist retail element is intended to **offer opportunities to the local community**. You are required to design six functional pods only, in keeping with your scheme, that will house these individual businesses.
- A restaurant, with seating capacity for 50 patrons, including both an interior and covered exterior space.
- The Strand Street Quarry terminus for the Lion Battery cable car, to include gantry walkway to hold queuing tourists.
- A pedestrian gateway to a mountain promenade / viewpoint system linking to Lion Battery.
- The Strand Street Quarry terminus for the V&A Waterfront cable car, to include gantry walkway to hold queuing tourists.
- You are **not required** to consider or detail the actual retail offering within the local community-operated retail pods.
- You **do not have to consider parking** nor detail any back of house functionality or ablutions within the scheme.

Considerations:

- Weather conditions.
- Interventions to **relieve potential boredom** during longer queues in peak seasons / times.
- The route between the two termini should be **well considered to link and promote** the use of all the other functions on the site.
- Your design intervention must be **sensitive to its context** and needs to **reflect its Bo-Kaap heritage**.

Use your understanding of the given location to design more than just a pitstop or halfway station. This **must be a drawcard tourist destination** in its own right.



FREEDOM QUARTER



Freedom Quarter is an architectural landmark that celebrates the history and culture of the Cape Malay and the Bo-Kaap community, Cape Town's the most colourful neighbourhood.

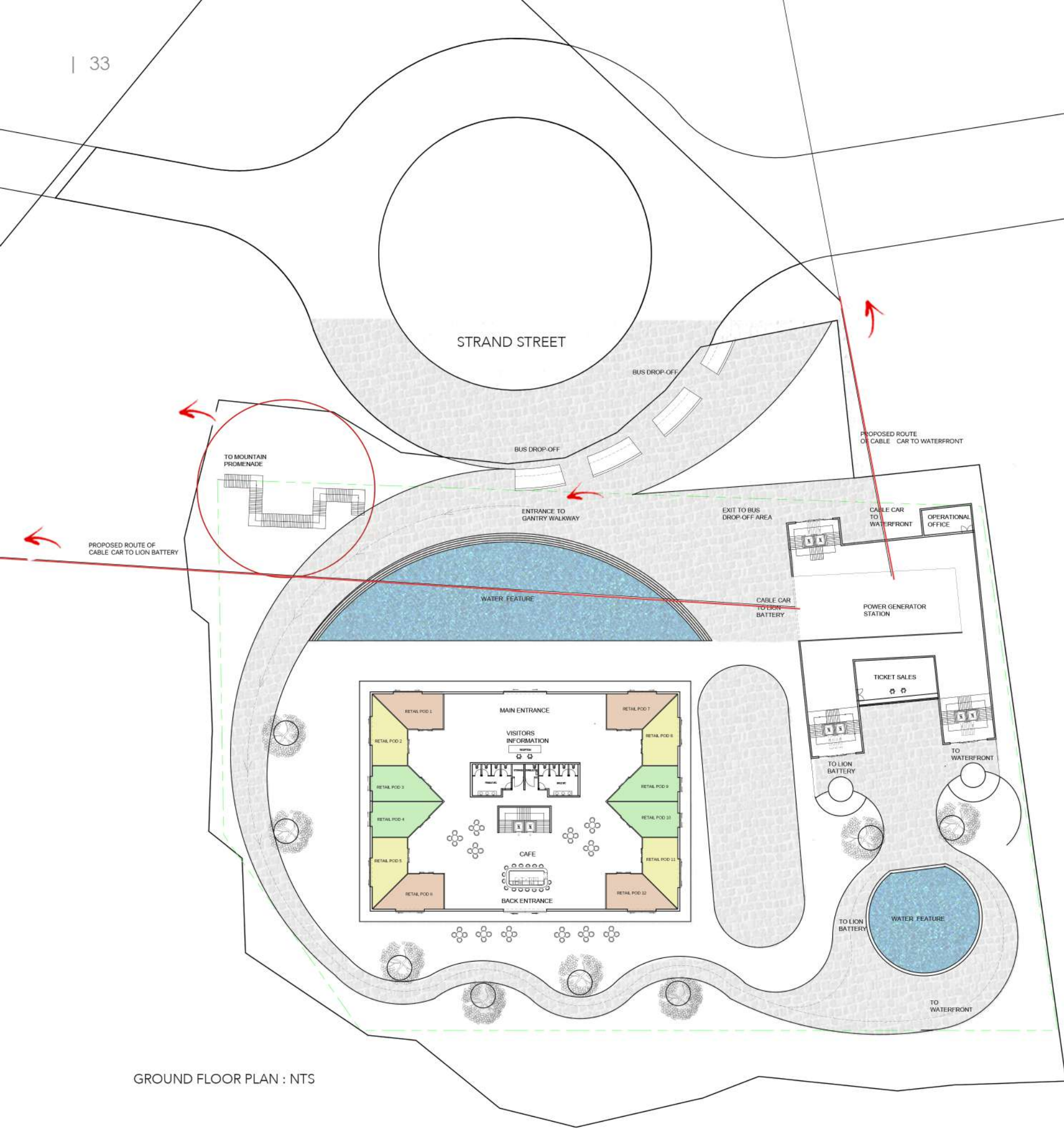
Freedom Quarters' architecture is inspired by an ARCH which is symbolic of rebirth and the emblem of the Muslim faith and the four Holy Muslim Burial grounds located on the slopes of Signal Hill just above the Quarry.

The colour palette seen in the decorative screen and interior of the retail pods represents and reflects the spirit of the vibrant Bo-Kaap , its community and celebrates freedom.

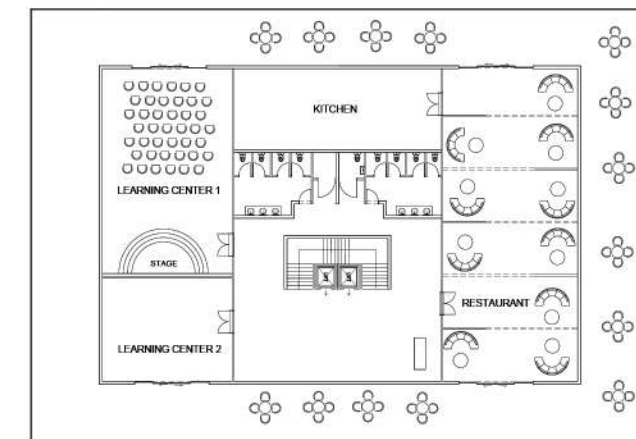
Freedom Quarter connects local and international visitors to the rich history of the area and links them via cable cars to tourist attractions across Cape Town.

FREEDOM QUARTER





GROUND FLOOR PLAN : NTS



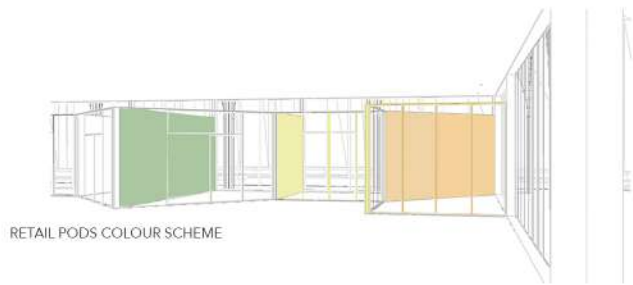
FIRST FLOOR PLAN : NTS



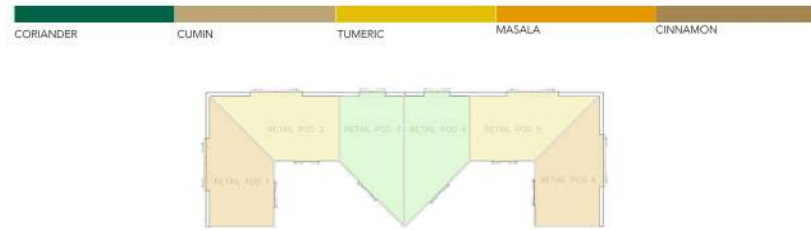
MOUNTAIN PROMENADE TO LION BATTERY | VIEWPOINT SYSTEM



QUEUING WALKWAY | TOURIST RETAIL EXPERIENCE



RETAIL PODS COLOUR SCHEME



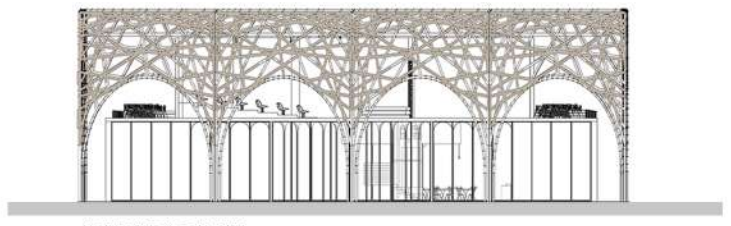
RETAIL PODS MODULAR LAYOUT



FAITH | BY ANTON SMITH



ANGEL | BY ANTON SMITH



NORTH ELEVATION : NTS



QUEUING WALKWAY | SPICE ROUTE CAFE



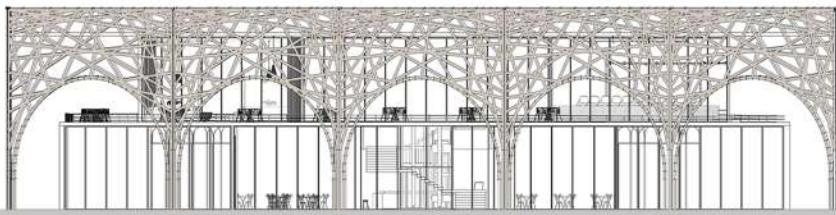
MAIN ENTRANCE | VISITORS INFORMATION CENTRE



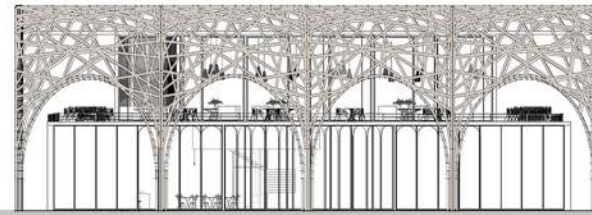
GANTRY WALKWAY | RETAIL EXPERIENCE



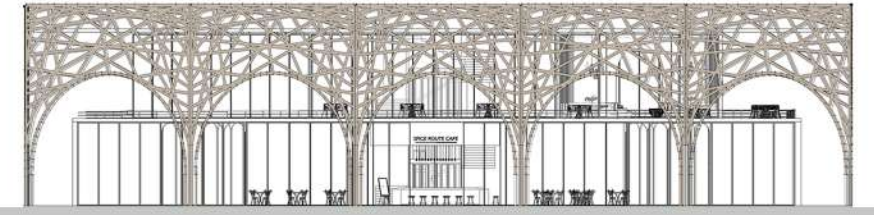
PG BISON | 1.618



EAST ELEVATION : NTS



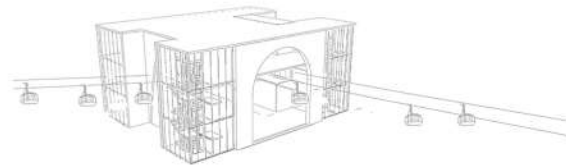
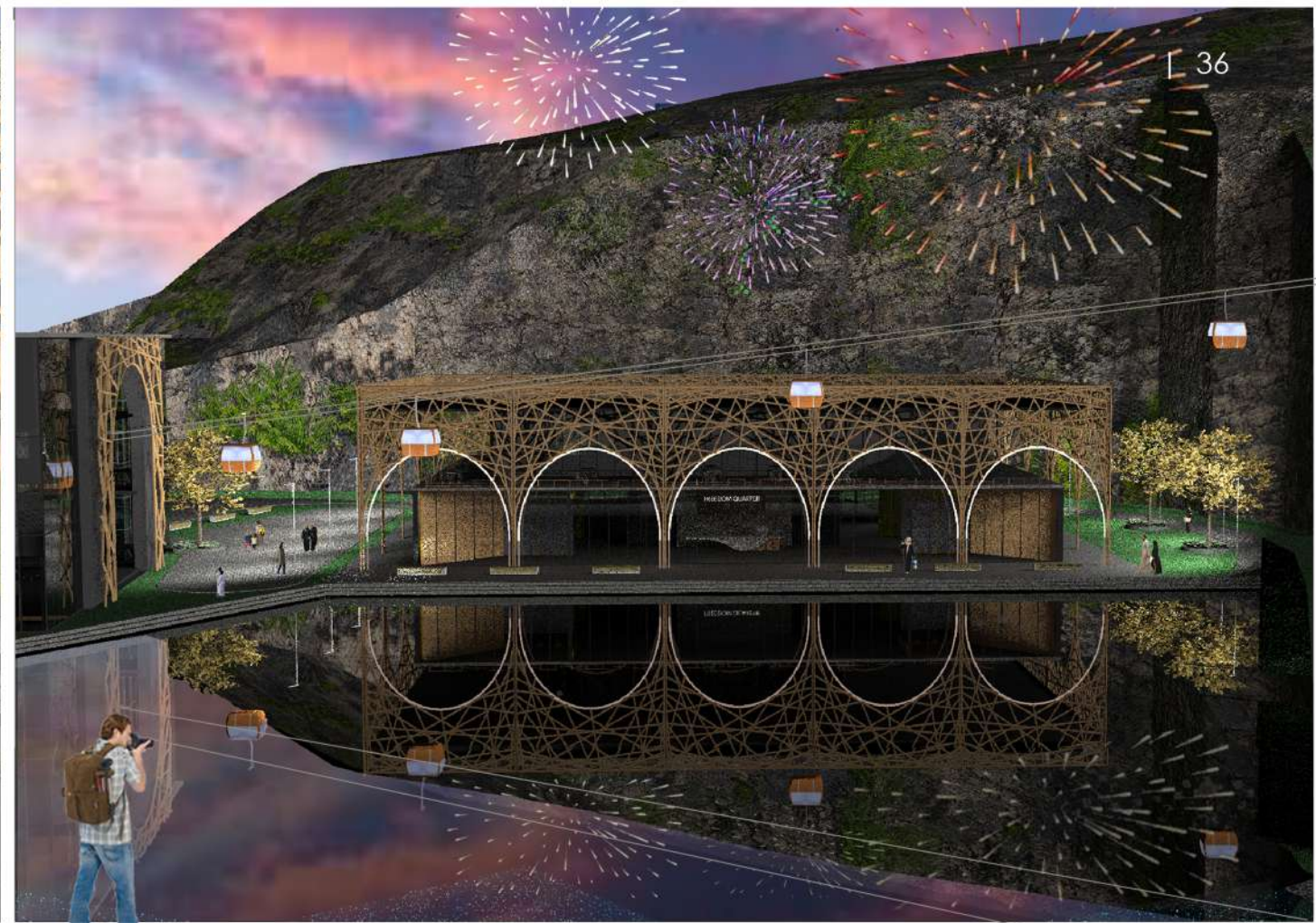
SOUTH ELEVATION : NTS



WEST ELEVATION : NTS



MAIN ENTRANCE | VISITORS INFORMATION CENTRE | TOURIST RETAIL EXPERIENCE

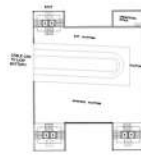


CABLE CAR TERMINUS | DIRECTIONS TO WATERFRONT AND LION BATTERY

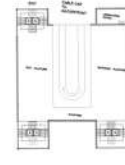
CABLE CAR TERMINUS



GROUND FLOOR PLAN : NTS



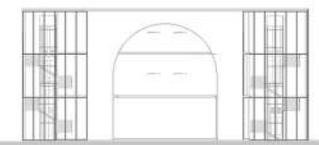
FIRST FLOOR PLAN : NTS



SECOND FLOOR PLAN : NTS



TERMINUS WEST ELEVATION : NTS



TERMINUS NORTH ELEVATION : NTS



RETAIL PODS | NIGHT VIEW



RESTAURANT | 1ST FLOOR | INTERIOR AND EXTERIOR VIEW



LEARNING CENTRE | 1ST FLOOR INTERIOR



ECO - SHORE

Luxury Beach Front Hotel

Camps Bay, Cape Town



Research conducted by global on-line travel agency Booking.com has revealed that awareness of eco-friendly accommodation options is growing, showing a willingness to spend more as the travellers seek to book more of these greener stays than ever.

Most people assume that being eco-friendly involves a compromise on comfort and luxury, but that isn't the case. Eco-friendly hotels have embraced geothermal energy, upcycled furniture, and are sourcing food directly from farms, to provide guests with an experience that is both sustainable and top-quality. Luxury eco-friendly hotels and eco-lodges offer the best to their guests, but never at the cost of damaging the health and environment.

My design will be holistically pleasing to the guests mind and body while also being aesthetically pleasing to the eye.
I would like to connect design to nature to support the wellbeing of it's users due to stress: physical, mental, emotional.

ECO-LUXURY BEACH FRONT HOTEL

HOTEL RECEPTION AND LOBBY



SAND DUNES INSPIRED BAMBOO PARAMETRIC RECEPTION



COCONUT LOUNG CHAIR



SLIM 0914 CONE PENDANT LIGHT



MARBLE SURF BOARDS

HOTEL LOBBY | SOUTHERN RIGHT FEATURE LIGHTING CUSTOM DESIGN



CUSTOM DESIGN SUSTAINABLE FURNITURE



SEED COFFE TABLE



ISLAND SOFA



GEOMETRIC BAR STOOL



RECYCLED OCEAN PLASTIC
PARAMETRIC PHANTOM CHAIR



HOUT BAY'S
ZIMBABWEAN
ARTISTS



MBONGENI BUTHELEZI ART |
REUSED PLASTIC

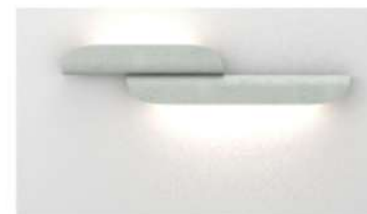
ECO-LUXURY BEACH FRONT HOTEL



HOTEL LOUNGE



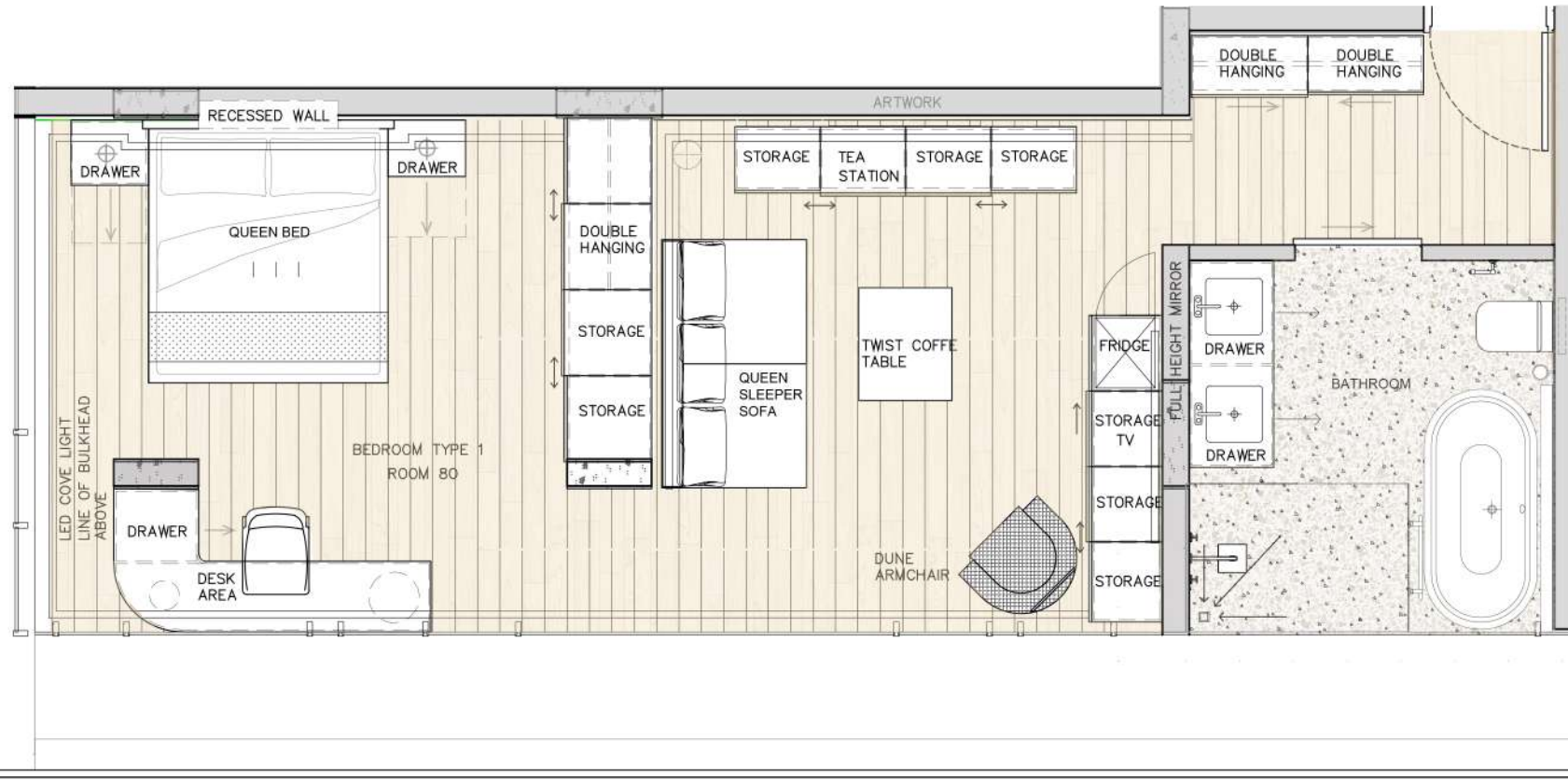
HOTEL TERRACE



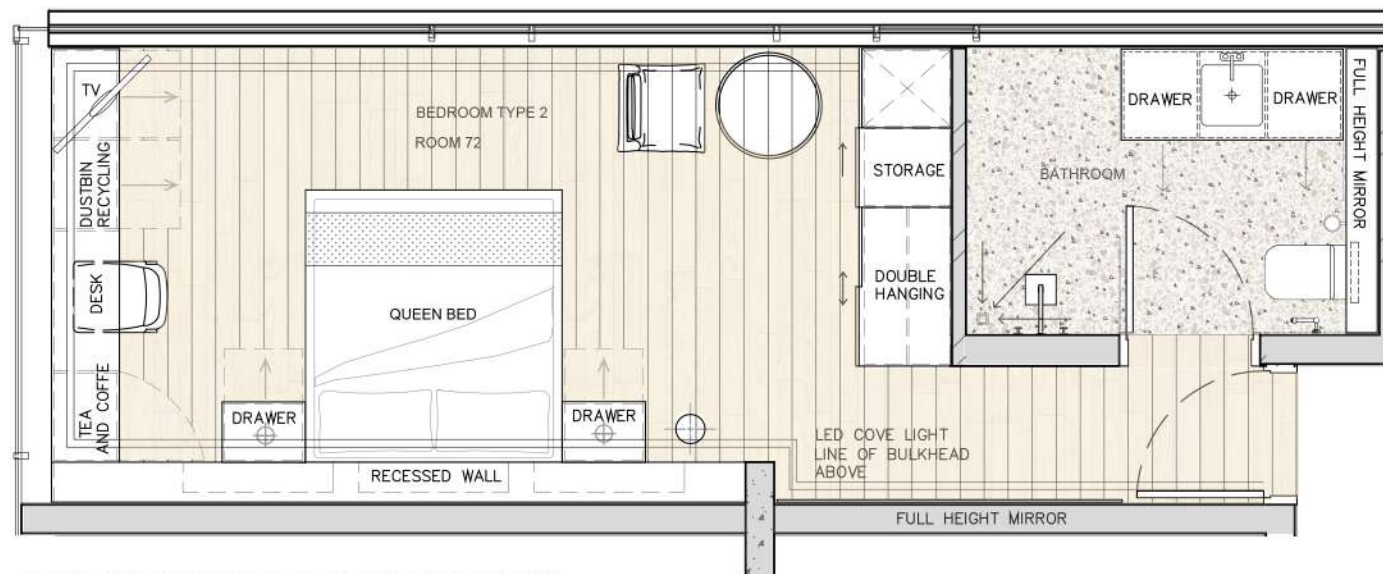
LIV LINEAR OUTDOOR FACADE LIGHTING
DEXTER LIGHTING



EXOSET MULTIFUNCTIONAL POOL CHAIR



LUXURY ECO ROOM 80 | 40 M2 PLAN 1:50



STANDARD ECO ROOM 72 | 26,74 M2 PLAN 1:50

ECO-LUXURY BEACH FRONT HOTEL

HOTEL ROOMS



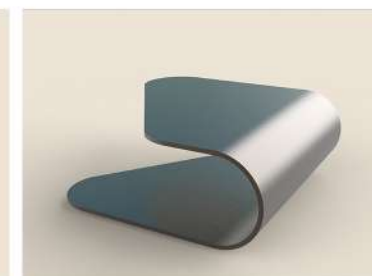
LUXURY ECO ROOM FIRST IMPRESSION



BALA LIGHTING WEYLANDTS



RATTAN CUSTOM PENDANT



TWIST COFFE TABLE



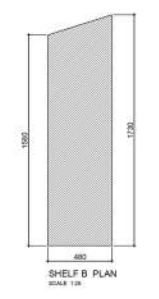
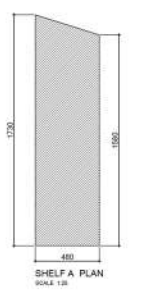
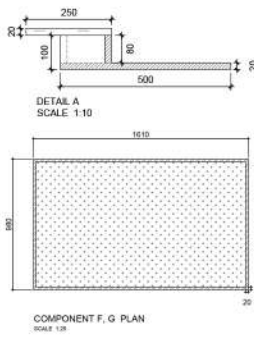
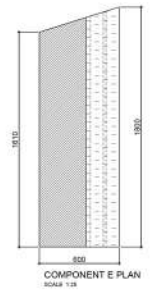
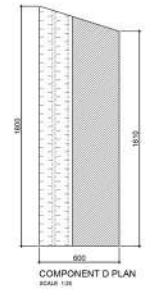
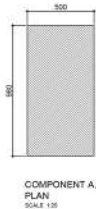
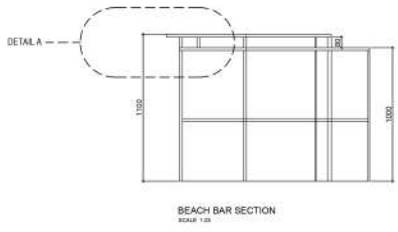
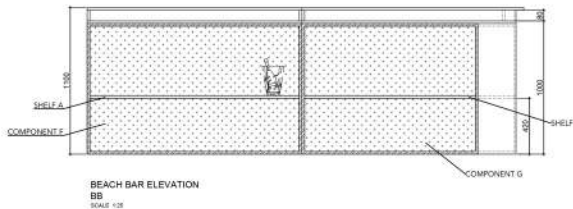
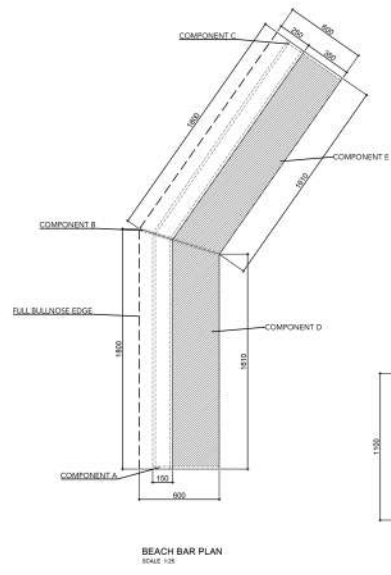
DUNES CHAIR | CUSTOM ECO DESIGN

ECO-LUXURY BEACH FRONT HOTEL

BEACH BAR DESIGN



PORTABLE AND DEMOUNTABLE BEACH BAR



- KEY:**
- 22mm Natural Pine, Matt non yellowing polyurethane sustainable coating Varconex Estanca 1500
 - 30x30 square base 4.0mm 100g steel mesh powder coated Black (mat)
 - Full Balinese edge
 - Recycled PFD Yut Poly White
 - Flashed Large Density Corrosion-resist zinc, sealed with Varconex Estanca XD 470

ECO-LUXURY BEACH FRONT HOTEL

BEACH BAR AREA



PORTABLE SUSTAINABLE BEACH GAZEBO



VIP BEACH BAR AND DINING



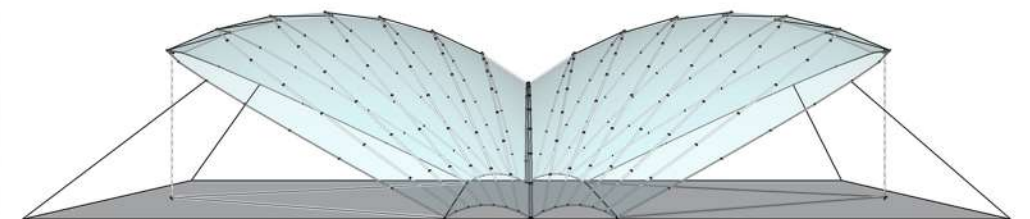
VIP DINING ON THE BEACH



LIGHTWEIGHT CORK BAR STOOL



RECYCLED PFP LEAF BEACH CHAIR



BEACH GAZEBO STRUCTURE



MATERIAL BOARD

ECO-LUXURY BEACH FRONT HOTEL



MATERIAL BOARD

PICBEL

50 STRAND STR., CITY BOWL, CAPE TOWN, 8001



Office Design Subtly Influences Employee Behavior.

Color schemes in their work environment can have a profound impact on the mood and productivity of the company.

The color of sunshine and fun, yellow, promotes cheer, creativity and can fuel optimism and innovation.

For people who need a peppy place to work, yellow is a good choice.

Blue is one of the most productive colors you can choose for your color scheme. With a wide variety of shades, it can be vibrant or soothing, and can have a calming influence on a hectic environment.

However, some shades of blue can come across as sad or cold, so balancing them out with warm yellow tones or complimenting those blues with contrasting shades of brown or green keeps them on a spectrum that's appealing to everyone.

Office interior filled with different seating options such as pods, booths, bench type and privacy sofas which each are defined by the floor and ceiling design pattern. The ceiling features a led strip outlining the shape and boundary of the whole area.

Casual seating or break out areas offer comfortable build in sofas, hidden from the rest of the office to offer a quiet space where users can either enjoy a coffee or work in a laid-back atmosphere.



BOXWOOD PROPERTY FUND

OFFICE DESIGN 10TH FLOOR



RECEPTION





PRIVATE OFFICE



MEETING ROOM #1

BOXWOOD PROPERTY FUND



EXECUTIVE OFFICE



MEETING ROOM #2

- 

LIGHT TIMBER FLOORING
- 

PLASCON YELLOW TANG
- 

TERRAZZO COUNTER TOP
- 

DECORATIVE ECO FRIENDLY WALL PANELS
- 

PLASCON BASHFULL BLUE
- 

DELICIOUS MONSTER PLANTS
- 

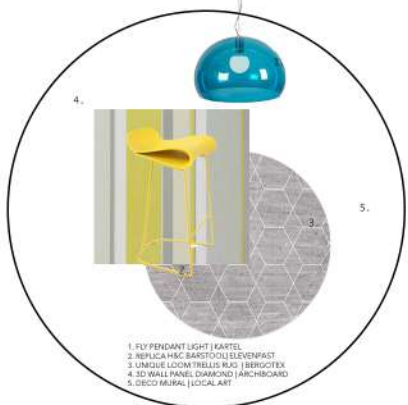
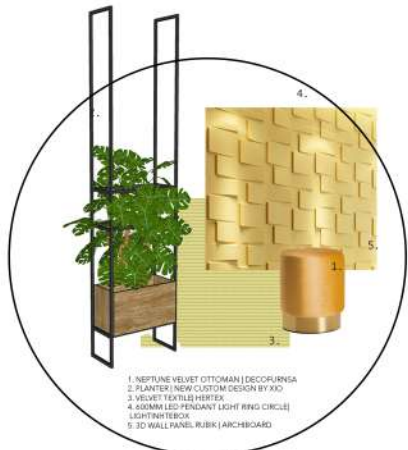
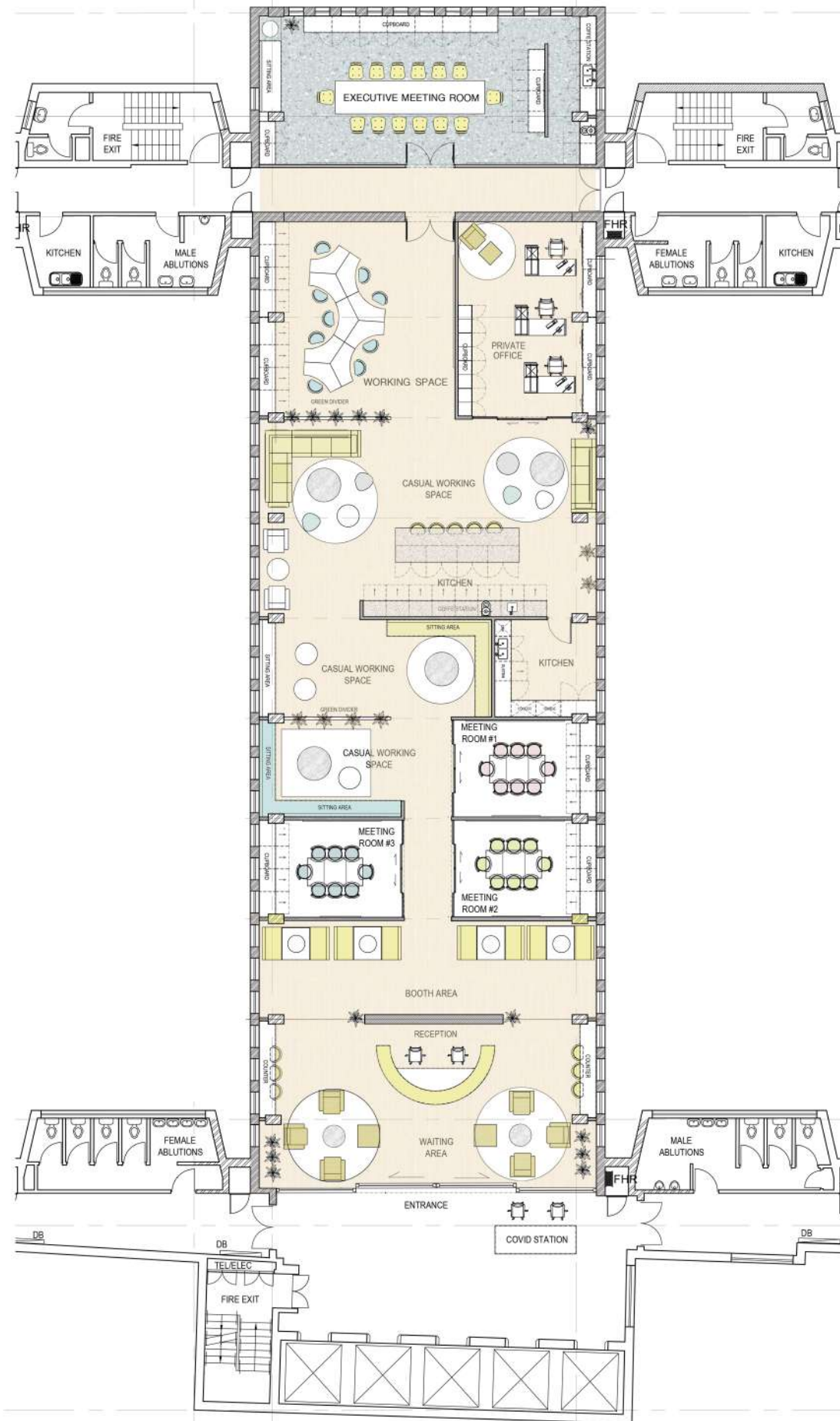
ACOUSTIC CEILING PANELS
- 

GLASS WRITING BOARD
- 

PAINTED GLASS
- 

TIMBER CLADDING

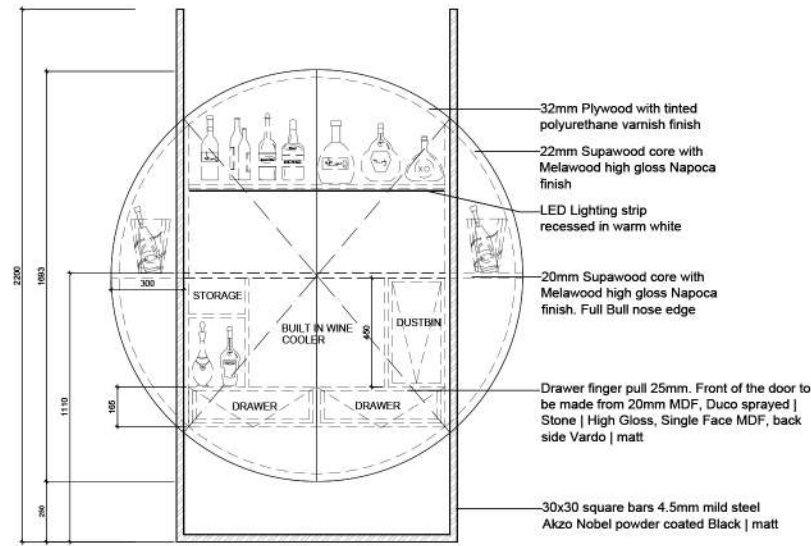
BOXWOOD PROPERTY FUND



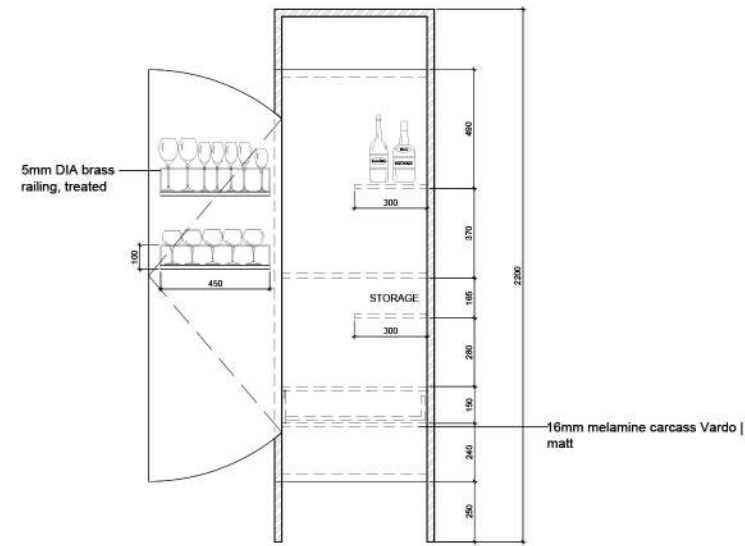
MEETING PODS can be easily dismantled and relocated, which reduces the cost of wall bungs. It is great for encouraging one-to-one interactions and promotes privacy of operations.

10TH FLOOR OFFICE PLAN: NTS

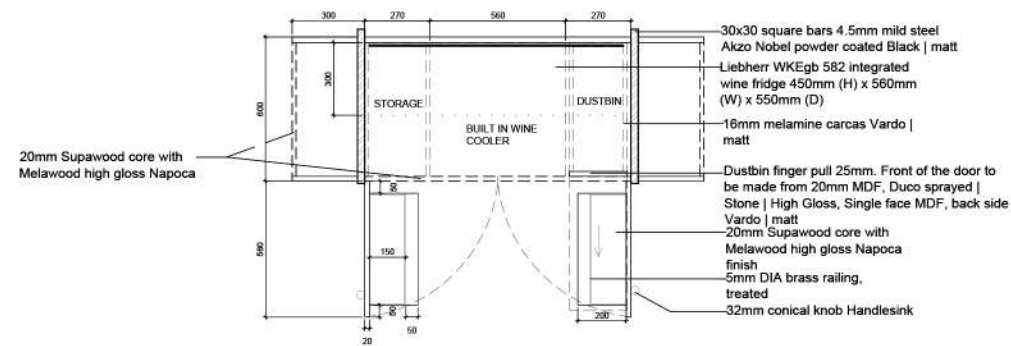
BC JOINERY



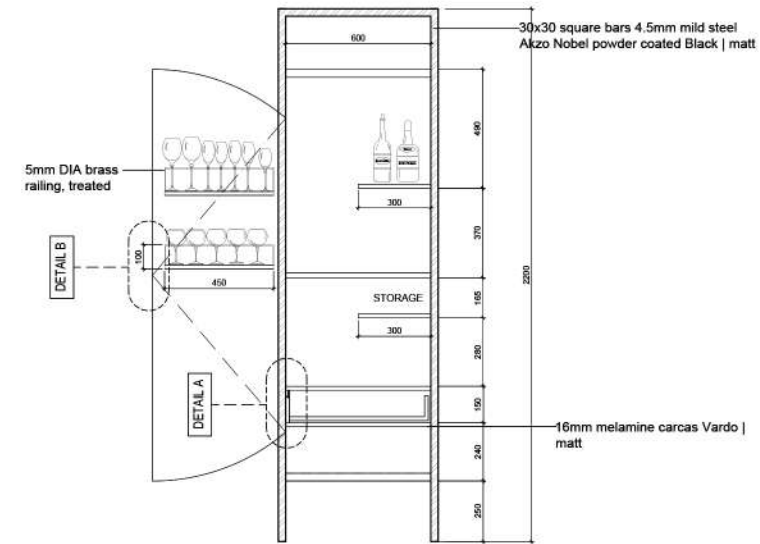
DRINKS CUPBOARD ELEVATION A
SCALE 1:20



DRINKS CUPBOARD ELEVATION B
SCALE 1:20



DRINKS CUPBOARD PLAN
SCALE 1:20



DRINKS CUPBOARD SECTION
SCALE 1:20

KEY:

- 20mm Supawood core with Melawood high gloss Napoca finish
- 30x30 square bars 4.5mm mild steel Akzo Nobel powder coated Black | matt
- Full Bullnose edge
- LED LIGHTING STRIP RECESSED IN WARM WHITE

TRADE NOTES

Copyright over all design and drawings shall remain the intellectual property of Design Time Studio and any provision to the contrary is hereby null and void. Copyright Act No. 63 of 1964 is hereby specifically invoked.

Reproduction of this drawing or design under any portion thereof, other than in terms of the Client/Designer Agreement, is strictly prohibited.

Contractor and subcontractors to verify all levels, heights and dimensions on site, and to check same against the drawings, before putting any work in hand.

Quality of all materials and workmanship to comply with the relevant SABS and BSB specifications.

The contractor is responsible for correct setting out on the specified works.

Contractor are to ensure that all details shown on this drawing are in complete compliance with local authority by laws and regulations.

Contractor are to locate and identify existing services on site, and are to protect these from damage through the duration of work.

Contractor shall be responsible for ensuring the structural stability of all components of their work and materials that the work structure is capable of supporting all loads applied thereto.

Contractor are to ensure that their work, in situ, is adequately protected at all times, during construction, and the responsibility for any damage incurred on site shall remain with the contractor until final hand over to the site, contractor and subcontractors are to ensure that all components, glazing panels and claddings items fit through all doorways, windows and etc.

This drawing is not to be used. Figured dimensions are to be used at all times.

Any queries or variations arising from any of the above, must be reported to Design Time Studio for clarification, prior to the commencement of any work.

DRAWING NOTES

KEY:

- 20mm Supawood core with Melawood high gloss Napoca finish
- 30x30 square bars 4.5mm mild steel Akzo Nobel powder coated Black | matt
- Full Bullnose edge
- LED LIGHTING STRIP RECESSED IN WARM WHITE

REVISIONS

0	DATE	DESCRIPTION
Item	date	description

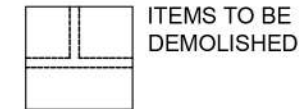
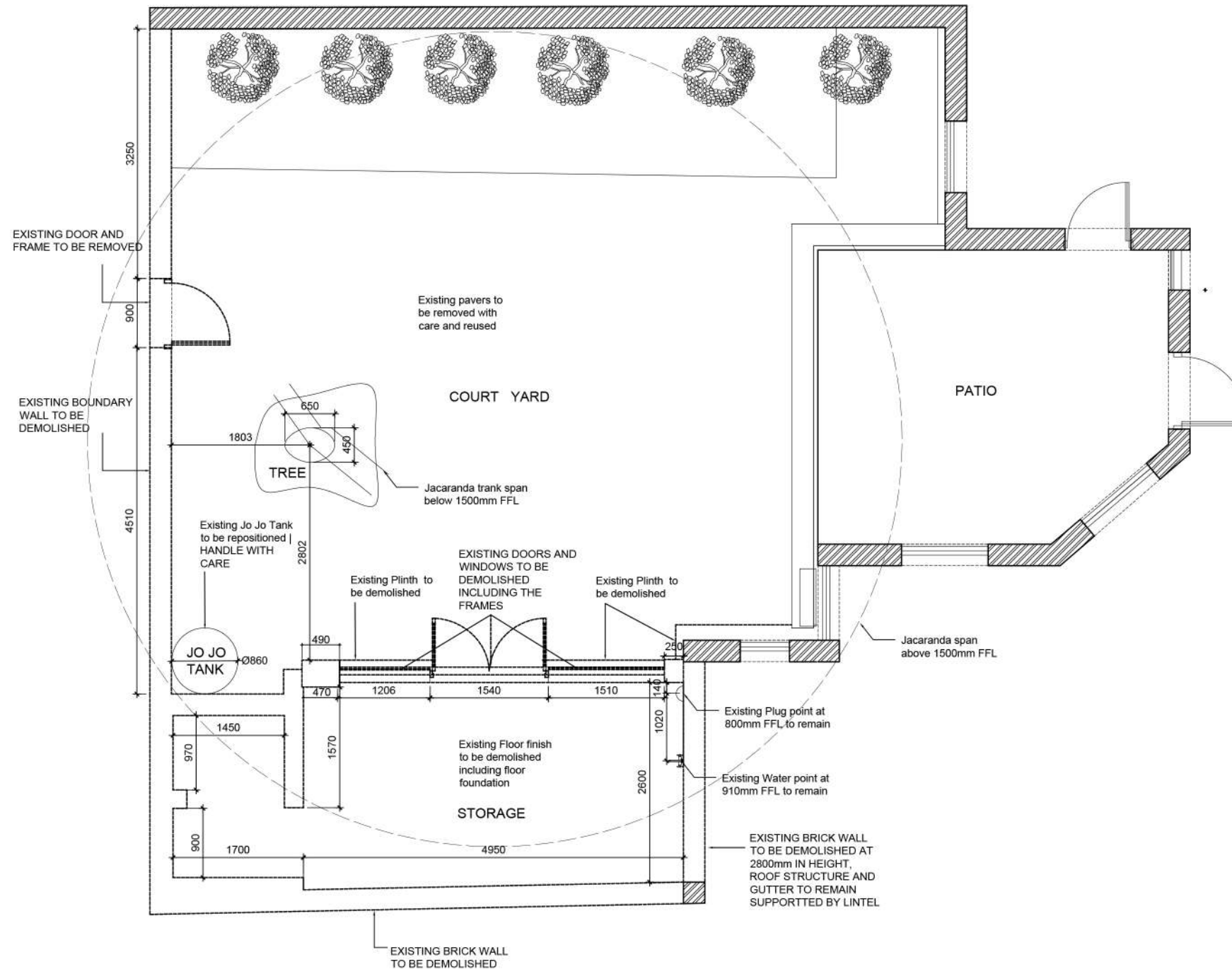
DESIGN TIME

63-65 Trill Rd, Observatory, Cape Town, 7925

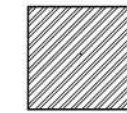
project title
Freestanding Drinks Cabinet

drawing description
JOINERY DRAWINGS

drawing number 01	scale 1:20
project number 01	date 07.10.2021
designer IRYNA	revision
client approval	



ITEMS TO BE DEMOLISHED



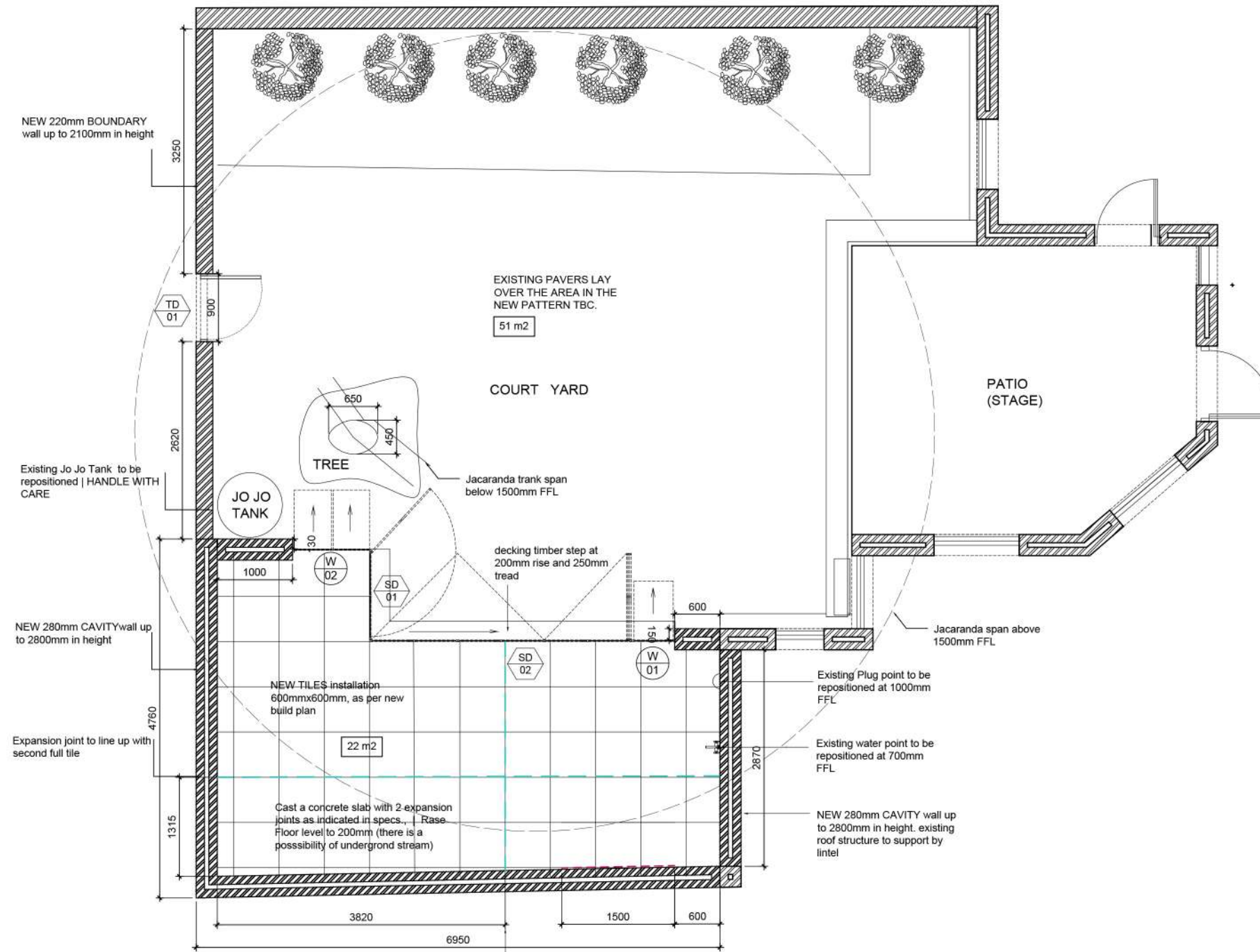
EXISTING brick walls to remain

NOTES:


1. Existing floor to be demolished including foundation. Cast new concrete slab and apply waterproofing in the indicated area. Rase floor level up to 200mm.
2. Existing JOJO tank handle with care and move into new position indicated on New Build work plan.
3. All the pavers to be removed and reused for new installation, handle with care
4. Jacaranda tree to remain untrimmed.

DT COURTYARD DEMOLITION PLAN
SCALE 1:50

BC | WORKING DRAWING PACKAGE



DT COURTYARD NEW BUILD WORK PLAN
SCALE 1:50

-  NEW 220mm DOUBLE SKIN BRICK BOUNDARY WALL up to 2100mm in height
-  NEW 280mm CAVITY WALL up to 2800mm in height as per spec. below.
-  EXISTING BRICK WALLS AND CAVITY WALLS to remain

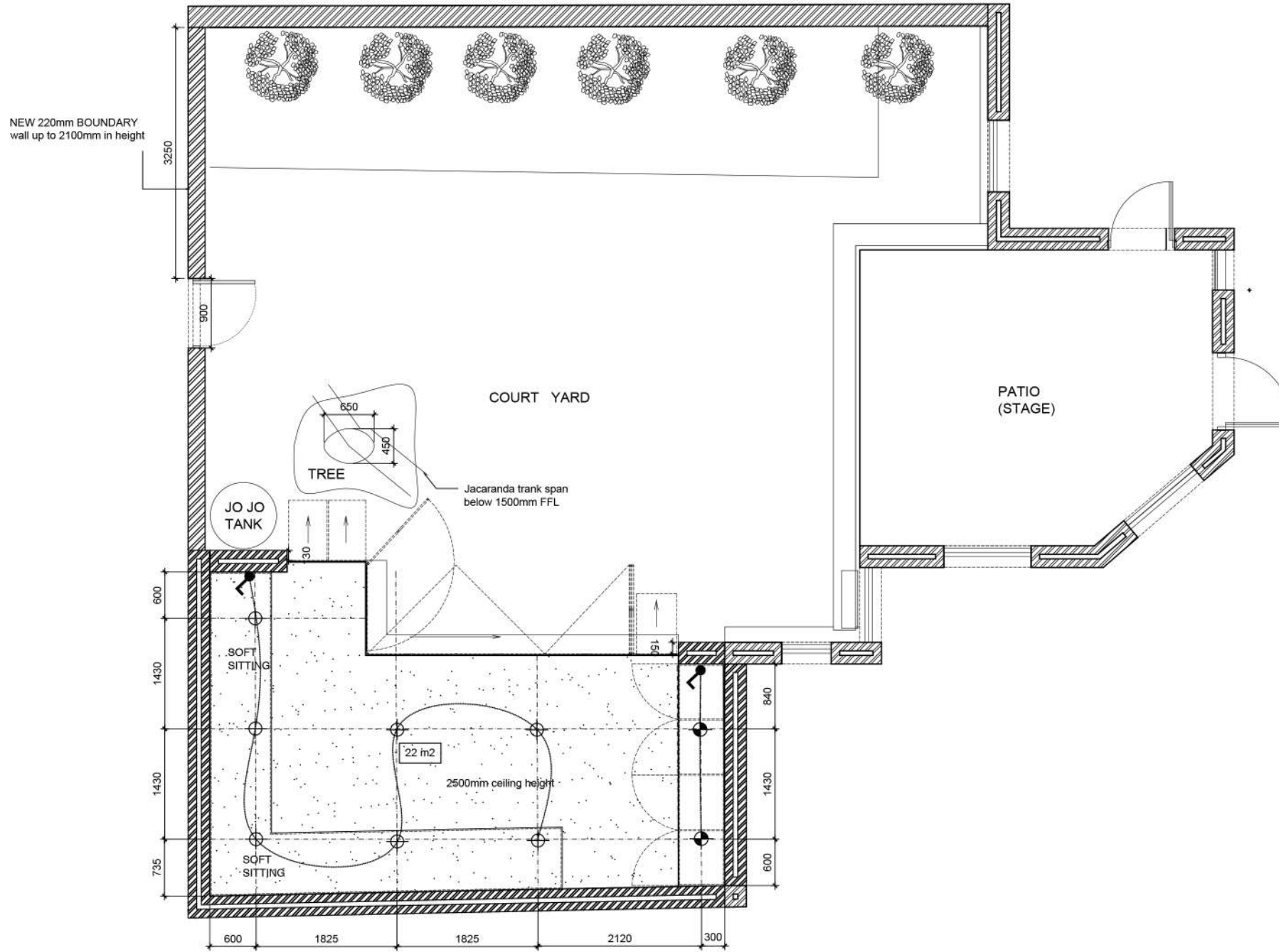
NOTES:

1. Existing patio floor cast new concrete slab and apply waterproofing in the indicated area. Raise floor level up to 200mm. Create a step 200mm rise and 250mm tread from decking timber.
2. Existing JOJO tank handle with care and move into new position indicated.
3. All the pavers to be reinstalled in the new pattern, handle with care
4. Jacaranda tree to remain untrimmed.
5. Cast a concrete slab with 2 expansion joints as indicated, apply waterproofing before installation of cavity walls and new tiles installation | raise Floor level to 200mm (there is a possibility of underground stream)

-  PORCELAIN TILES Midway Greige Matt Glaze non slip 600x600mm | ITALTILE
-  Timber scirtings in indicated area H:100mm W:1500mm

NOTES:

1. Grout color light grey, spacing 3mm



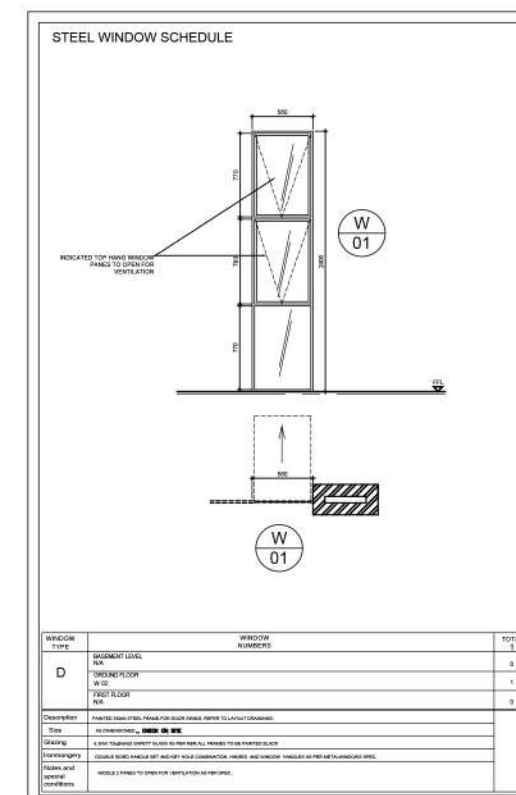
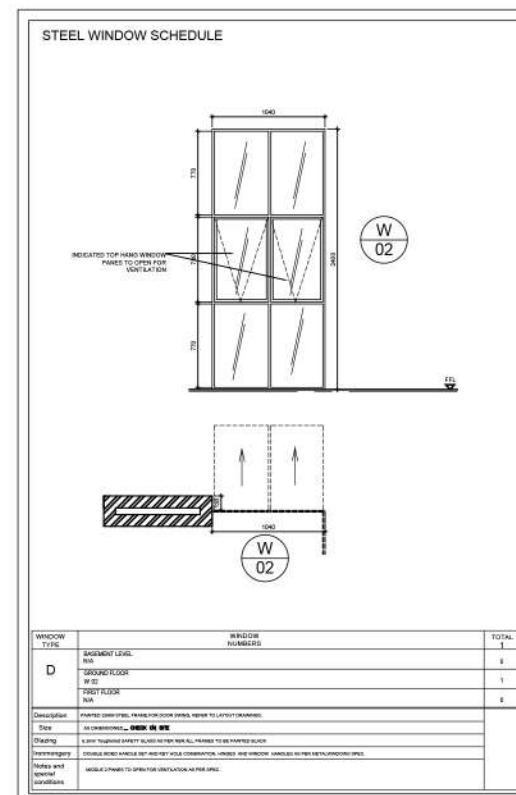
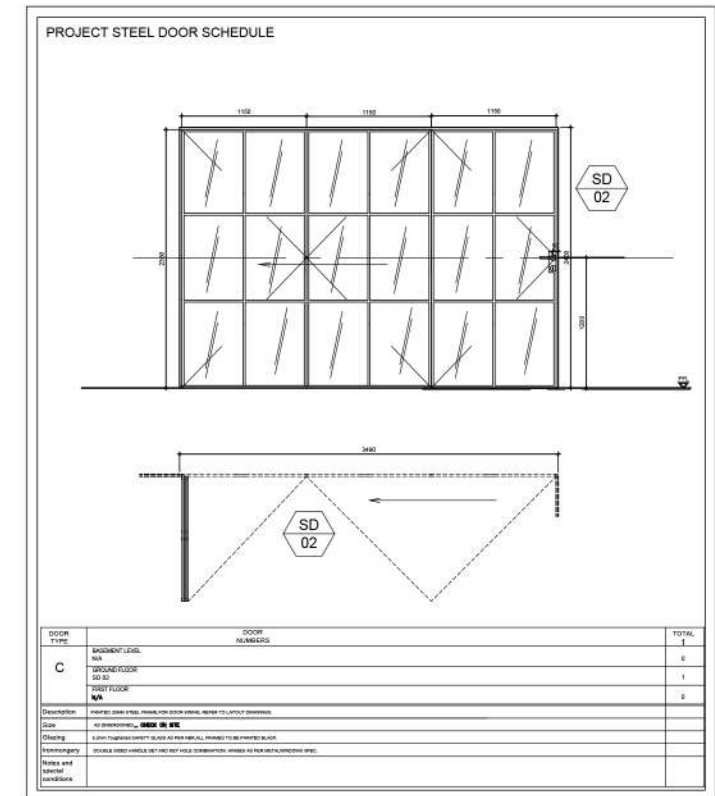
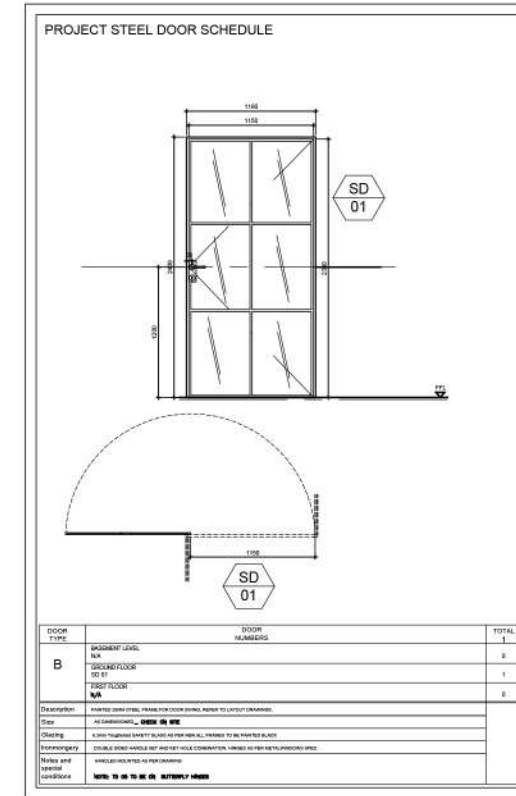
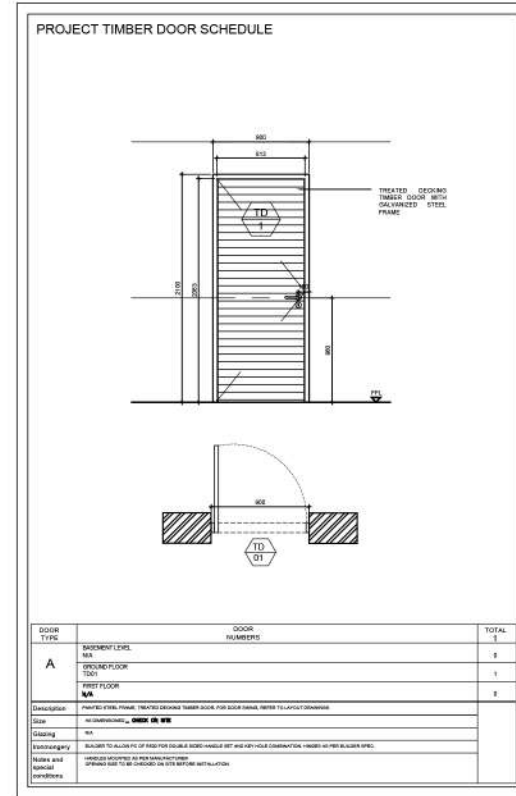
LIGHTING LEGEND:

⊕	<p>Aluminium recessed down lights. <i>SPEC:</i> white Eurolux D63W 3X Curved Rim Dowlight (50W). Die cast aluminium. /AC/DC NOTE: all down lighters to be on dimmer switches</p>
⊙	<p>Cabinet Downlights <i>SPEC:</i> Radiant LN349-3 LED /White, with transforme r/ recessed into top kitchen cupboard NOTE: all down lighters to be on dimmer switches/ Builders Warehouse</p>
⌚	<p>Switch <i>Spec:</i> Ysalis Universal Dimmer Switch / Builders Warehouse</p>

SKIMMED AND PAINTED PLASTERBOARD CEILINGS WITH 25mm DONN PLASTERBOARD TRIM ALL ROUND. PAINTED WHITE
 22m²

DT COURTYARD LIGHTING PLAN
 SCALE 1:50

BC | WORKING DRAWING PACKAGE



DT COURTYARD DOORS AND WINDOWS SCHEDULE
 SCALE 1:50

BRIEF

FOUR ON O. Blok's 12th development, is situated on the localised streets of Oliver and Lincoln that connect the urban life so intrinsically a part of Sea Point, to the natural wonder of the ocean. This connection, between human and nature, is something powerful that defines and softens our entire urban way of living and makes Cape Town so unique.

Your client is a young city living couple (aged 28 - 38). The husband owns a small advertising agency and his wife is a freelance graphic designer.

Your client has bought an apartment in the new residential block, FOUR ON O. They bought this apartment mainly as an investment and for its complex mix of urban growth and natural splendours.

They want you to design their interior beautifully, bearing in mind that they are looking for a contemporary, on-trend, yet comfortable living space. This client loves clean lines, edgy design and a sense of 'space'.

Design :

- o An open plan living / dining / kitchen area. Your client has got a quirky, fun side to them, this should be considered in your design.
- o Main bedroom, BIC, with spacious en-suite bathroom. Please note the emphasis of a spacious bathroom layout.
- o A second bedroom that doubles up as a study where they can do the odd bit of work.
- o A second bathroom with shower, small basin and WC for guests.
- o A considered, and designed balcony space.

CONCEPT

'LESS IS MORE'

Tackled a red and grey colour palette for maximum impact, the apartment plays host to a vibrant red sectional sofa, red rug and red pendant light combination that dominates an open plan living space.

All other parts of the living area are knocked back in shades of grey and black, with light relief from wood panelling. White is used to offset swathes of grey and black, and only a smidge of red accent colour showcases inside the scheme.



Apartment 4 on O



OPEN PLAN LIVING ROOM / KITCHEN



HAMMOCK BATH



FOUR ON 0

APARTMENT 402, OLIVER ROAD, SEA POINT, CAPE TOWN 8001

DESIGN PROPOSAL / IRYNA

'LESS IS MORE'

Tackled a red and grey colour palette for maximum impact, the apartment plays host to a vibrant red sectional sofa, red rug and red pendant light combination that dominates an open plan living space. All other parts of the living area are knocked back in shades of grey and black, with light relief from wood panelling. White is used to offset swathes of grey and black, and only a smidge of red accent colour showcases inside the scheme.



Apartment 4 on 0 MOOD BOARD

LIVING AREA



KITCHEN



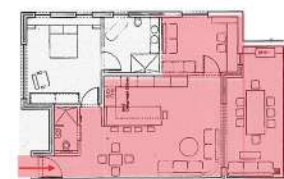
MAIN BEDROOM / BATHROOM



GUEST BEDROOM / STUDY



FLOOR PLAN NTS



PUBLIC VS PRIVATE SPACE



BUILD-IN VS FREESTANDING



OCEAN VIEW



FOUR ON 0

APARTMENT 402, OLIVER ROAD, SEA POINT, CAPE TOWN 8001

BATHROOM DESIGN PROPOSAL / IRYNA



HUMMOCK BATH

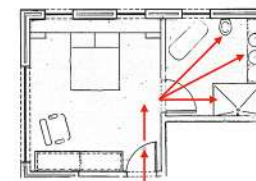


SHOWER

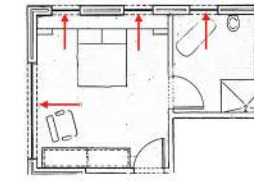
VANITY



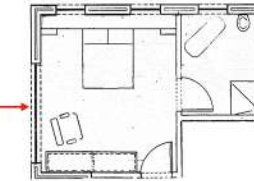
MAIN BEDROOM / BATHROOM FLOOR PLAN NTS



MOVEMENT DIAGRAM



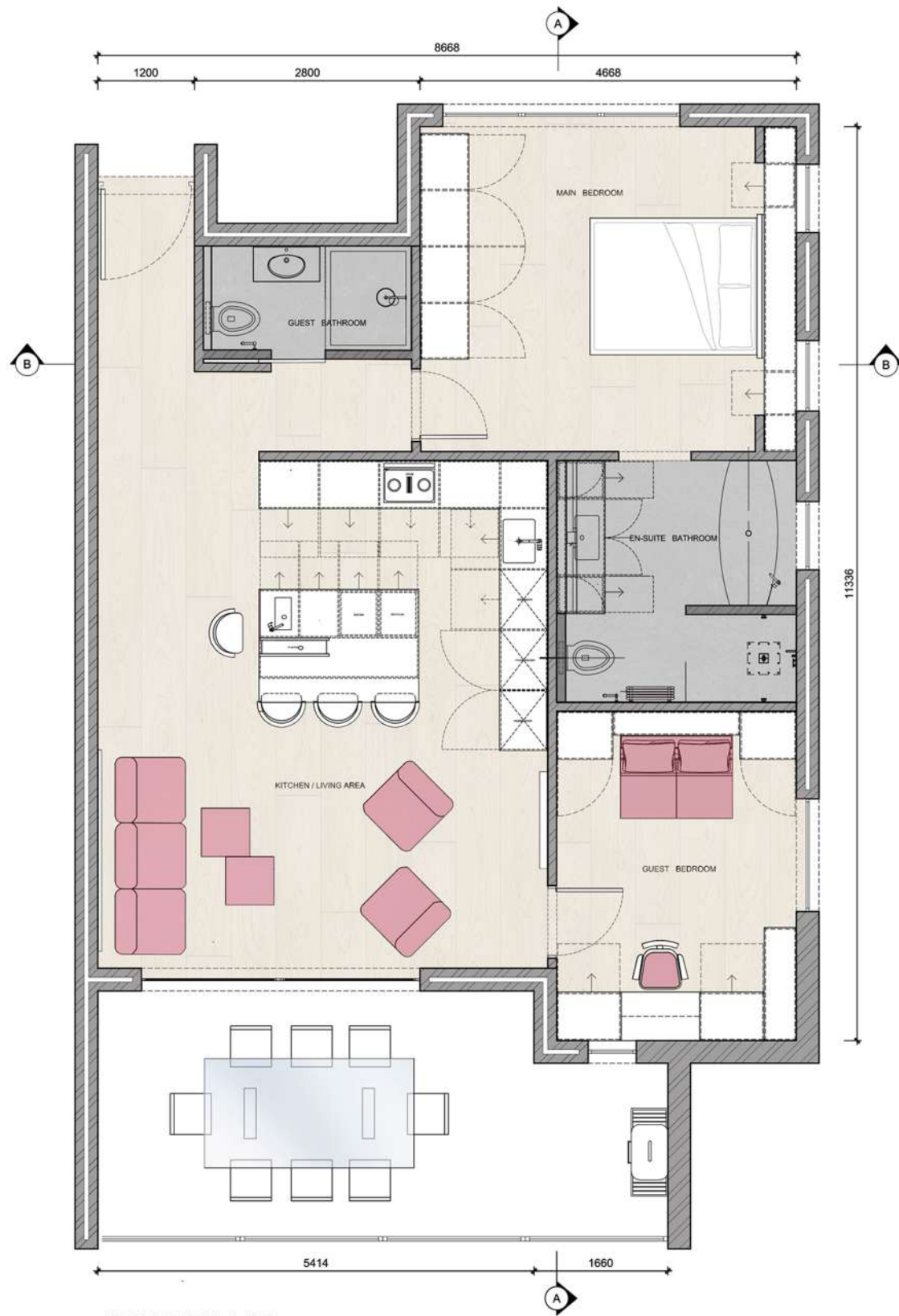
VIEW DIAGRAM



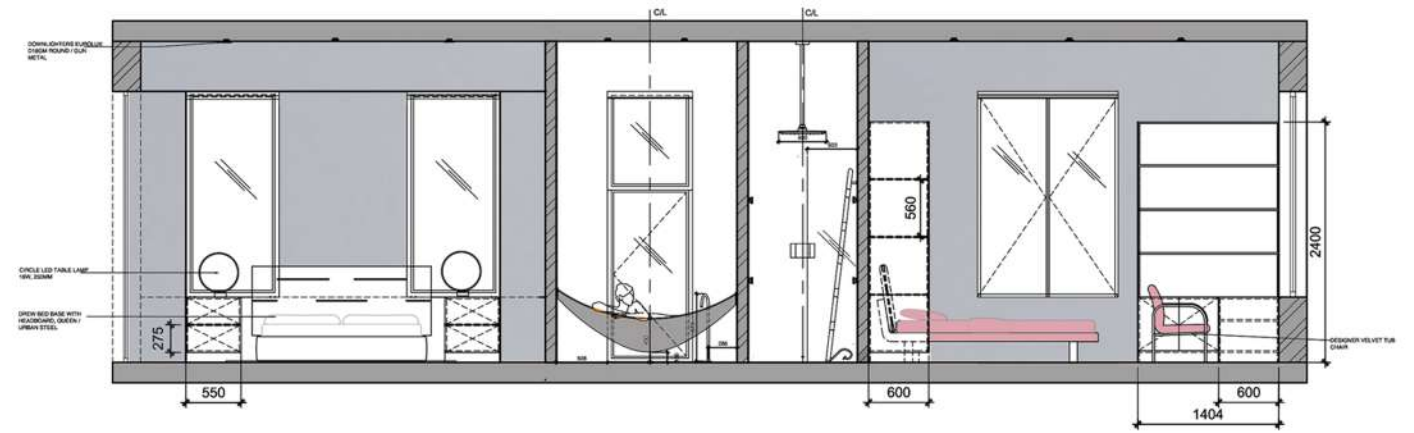
MORNING SUNLIGHT DIAGRAM



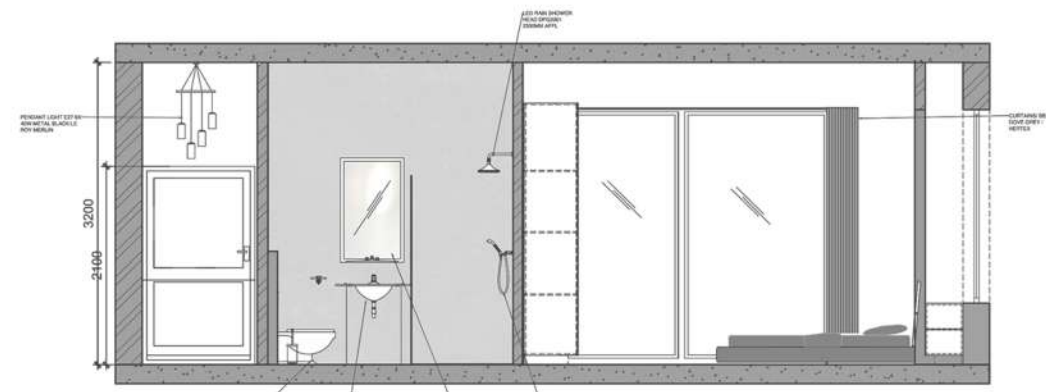
Apartment 4 on O



APARTMENT 402
FOUR ON O
FLOOR PLAN: NTS



APARTMENT 402
FOUR ON O
ELEVATION AA: NTS

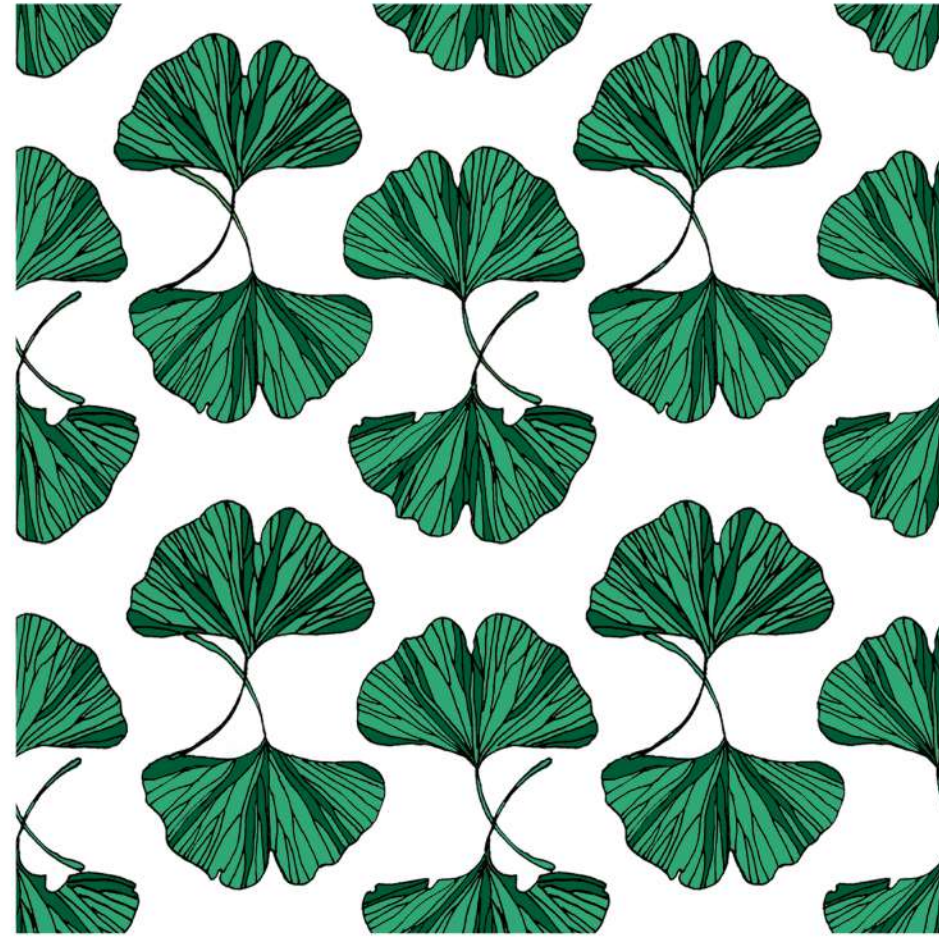


APARTMENT 402
FOUR ON O
ELEVATION BB: NTS

TEXTILE DESIGN | GENKO FOLIAGE COLLAGE



TEXTILE DESIGN | GENKO FOLIAGE COLLAGE



Design available through Printing By FORM, A New Department of Orms
Print Room & Framing.

9 Natural Textiles
Eco-Friendly Ink
100+ Exclusive Designs by Local Artists

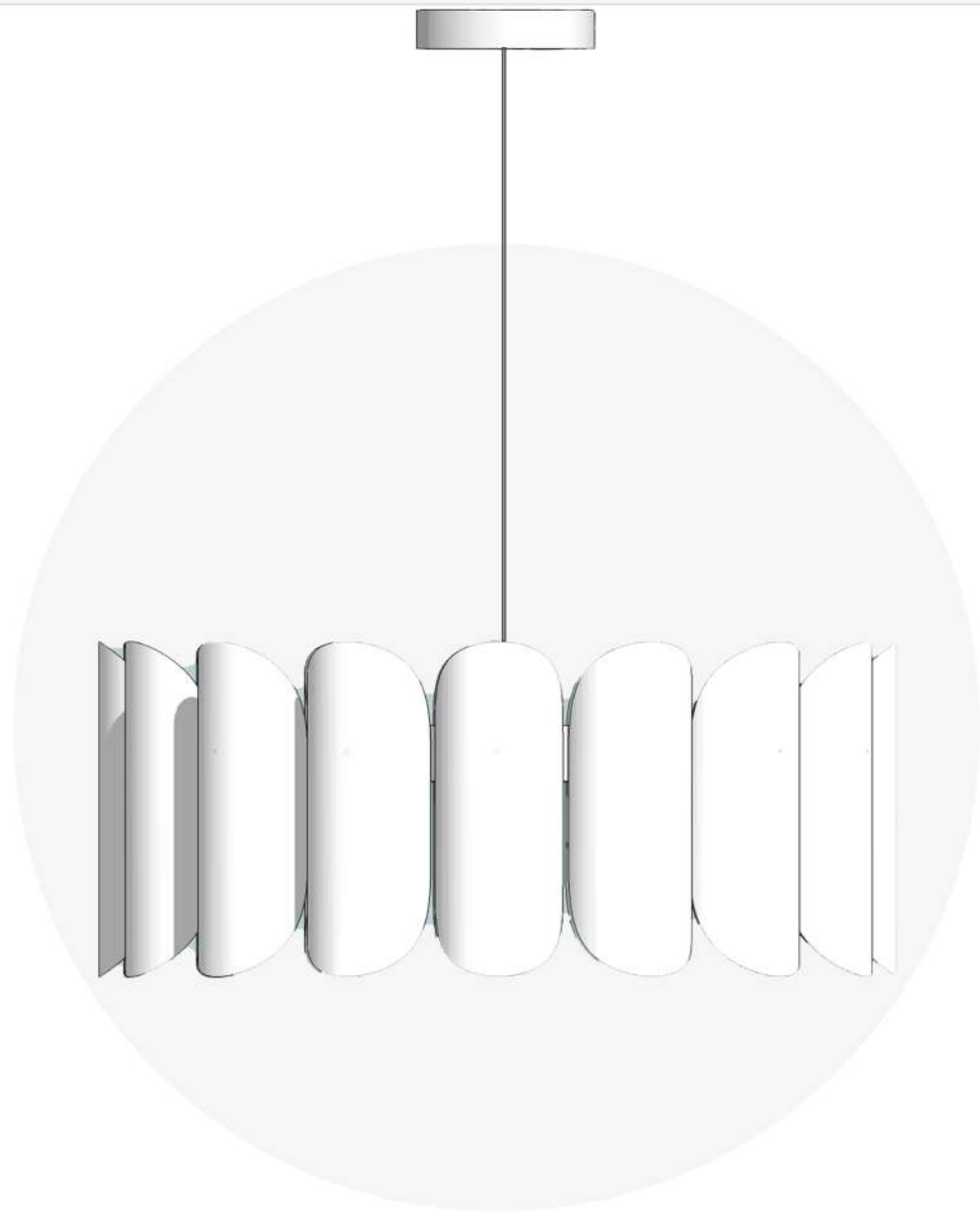
formbyorms.com
@OrmsDirect
#FORMBYORMS

Link : <https://online.anyflip.com/femy/yudh/mobile/index.html>



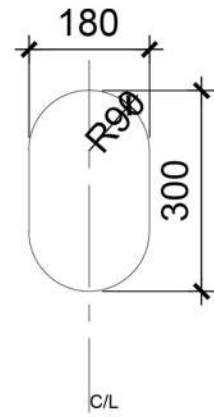
LA BELLA

PENDANT LIGHT | PRODUCT DESIGN



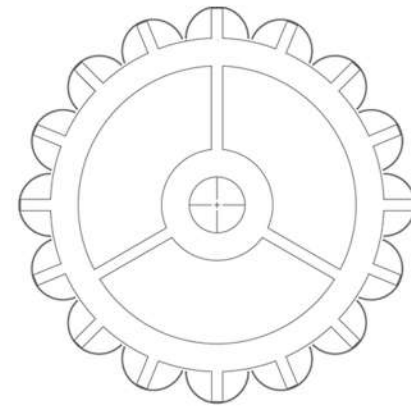
- 100% locally handmade & designed in Cape Town
- Made from Aluminium and Mild Steel
- Powder-coating (WHITE OR ANY COLOUR)
- BULB requirements: 1x100W or 1x60W
- Dimensions: H 320mm, O 600mm
- Excellent quality + Made to last
- Variety of different sizes

PENDANT LIGHT | PRODUCT DESIGN

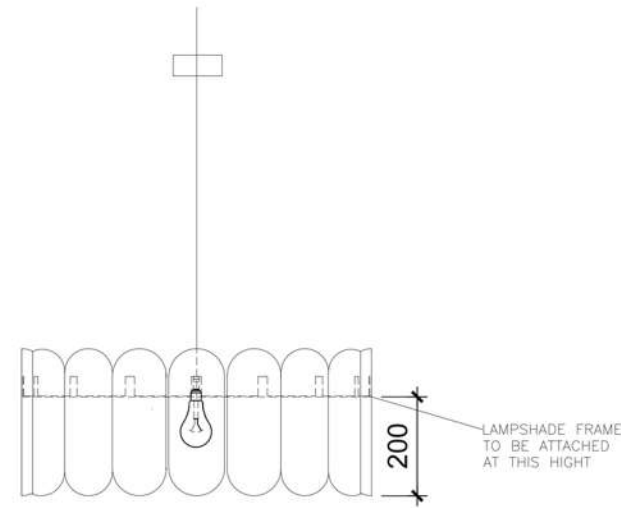


LA BELLA (FLAT) PETALS PLAN
FOR LAZER CUTTING: NTS

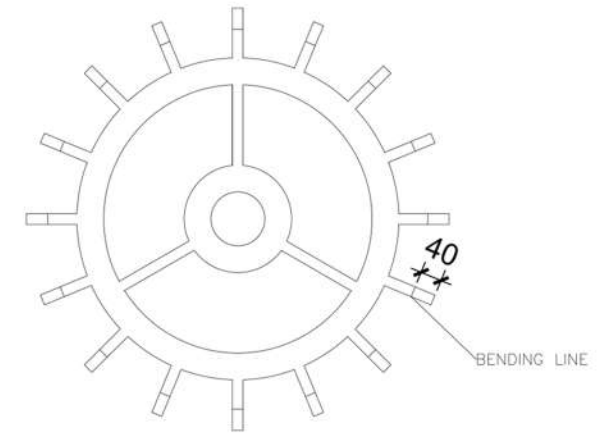
PETALS TO BE LAZERCUT AND ROLLED 180 DEGREE



LA BELLA PLAN: NTS



LA BELLA ELEVATION: NTS



LA BELLA LAMP SHADE FRAME PLAN
FOR LAZERCUTTING: NTS



LA BELLA LAMP SHADE FRAME ELEVATION
AFTER 90 DEGREE BENDING: NTS



HAND RENDERING

