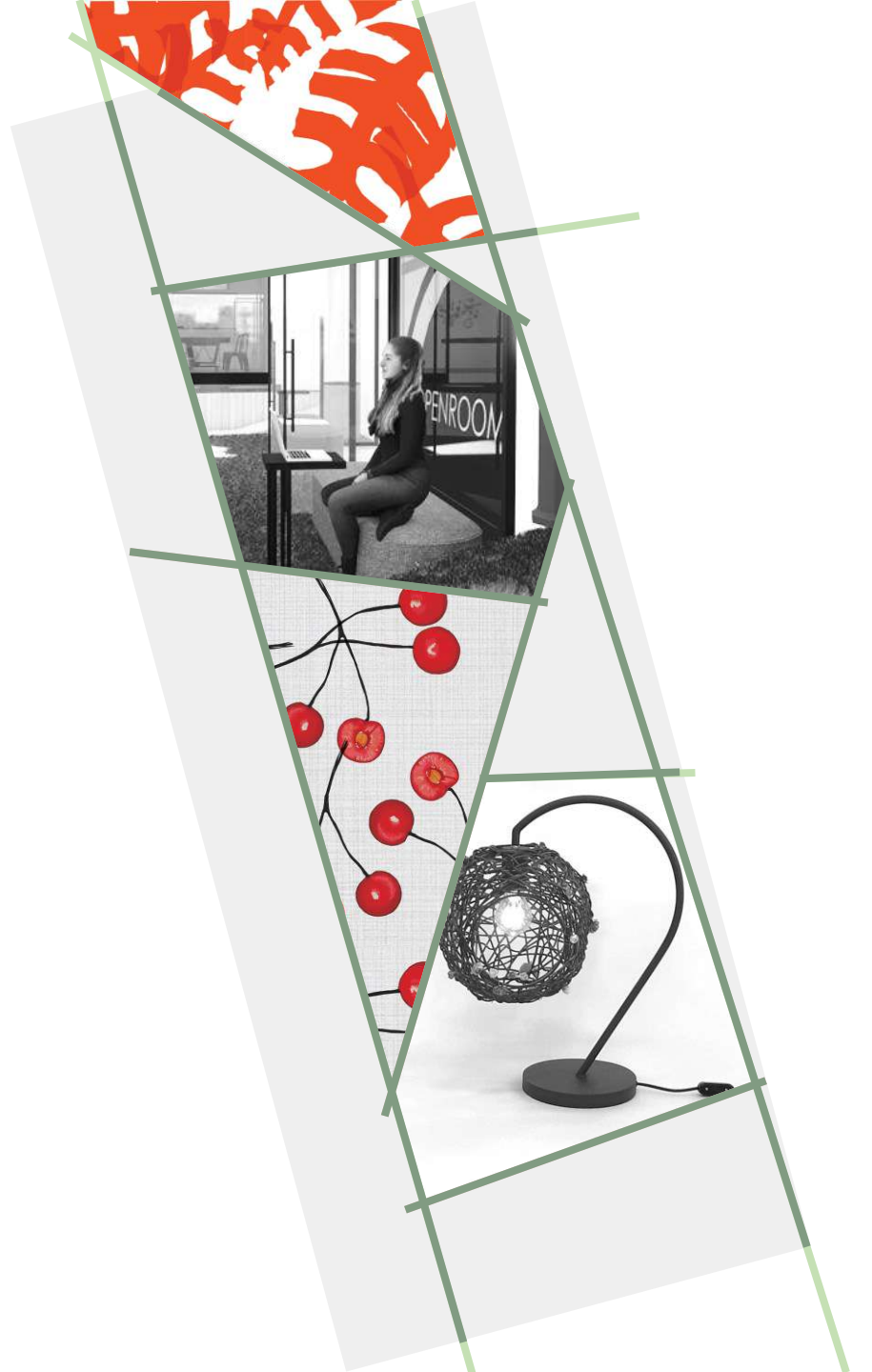


RENATE MATTHEE
PORTFOLIO



ABOUT ME

Hello, my name is Renate Matthee.

Based in Bellville, Oakdale, I have previous experience designing spaces with Sketch Up, with a focus on individuality and comfort. Since I started at Design Time, I have grown to be adept at Auto CAD and Photoshop and have worked on spaces for various clients of the studio along with the rest of my fellow graduates.

In this portfolio, I'd like to present some of my favourite projects.



CONTENTS



1

PG BISON
COMPETITION



2

STAY UNIQUE
TINY HOUSE



3

KSA
KITCHEN DESIGN



4

OTAKU: ON
RETAIL DESIGN

CONTENTS



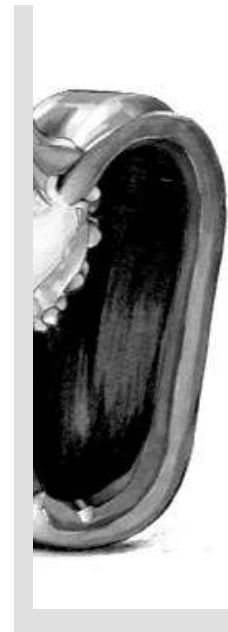
5

OPENROOM
OFFICE DESIGN



6

BARNET FAIR
BARBOUR SHOP



7

HAND RENDERS
COPIC MARKERS



8

PRODUCT
DESIGNS

A detailed architectural sketch of a modern, two-story house. The house features a prominent gabled roof with wide eaves. The front facade is characterized by large, multi-paned windows and a two-car garage with a horizontal-slatted door. To the left of the main house, there is a smaller, open-sided structure, possibly a pool house or a covered patio area. In the foreground, there are sketches of a swimming pool, a set of stairs leading down to it, and some landscaping elements like bushes and trees. The drawing is executed in a fine-line, sketchy style.

COMPITETION
PG BISON

As part of the PG Bison competition, we were asked to design a luxury desert oasis, that celebrates eating, sleeping, bathing, and socializing, using the four elements.

Oasis Rest



Oasis Rest



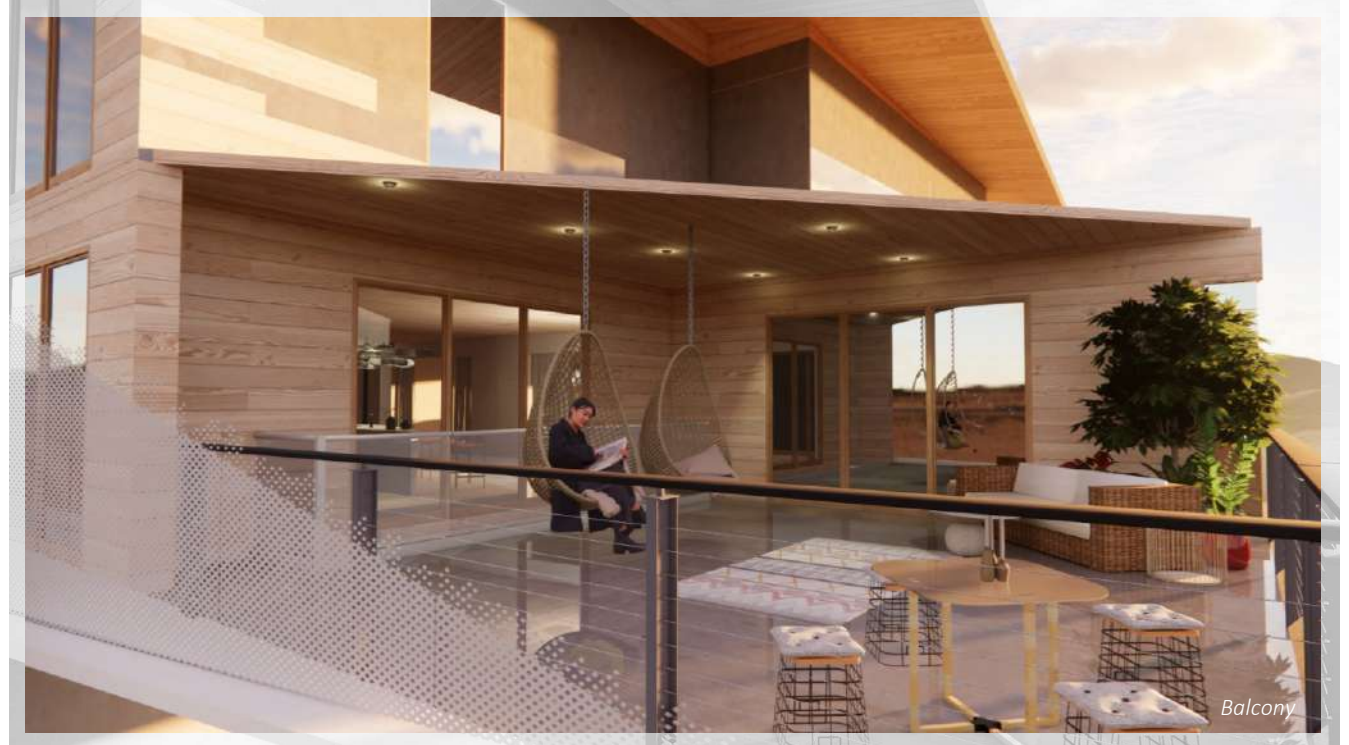
Welcome to Oase'Rest, a tranquil desert oasis located in Tankwa Karoo. From serene landscapes and modern architecture to relaxing amenities and a calming interior, this residential retreat is truly a site to see. The building runs electricity off the grid using a hybrid inverter solar system. The insulated walls and UV film-tinted windows provide a balanced temperature during a potentially harsh climate in this semi-desert region. Enjoy fantastic views, abundant opportunities for socializing, and many open and customizable spaces. Don't forget to take pictures and to like comment and subscribe.



Fire Pit



Pool



Balcony



Sauna



Bathroom



Bedroom



Lounge 1

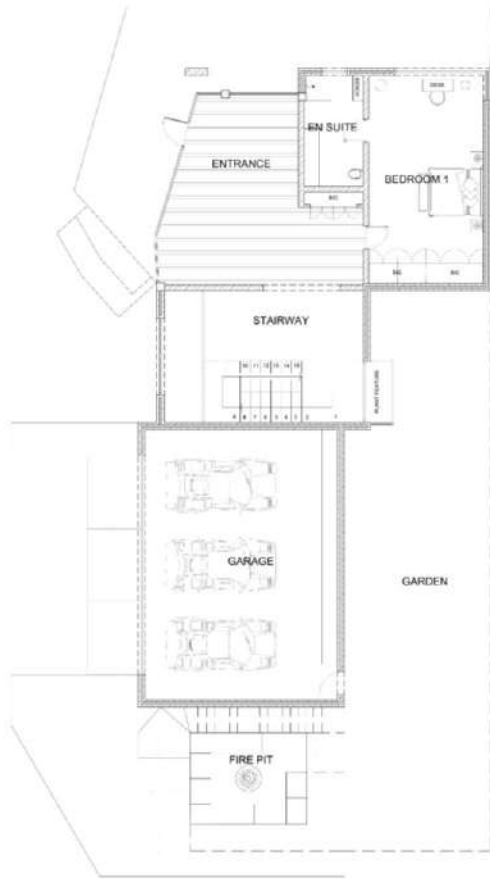


Lounge 2

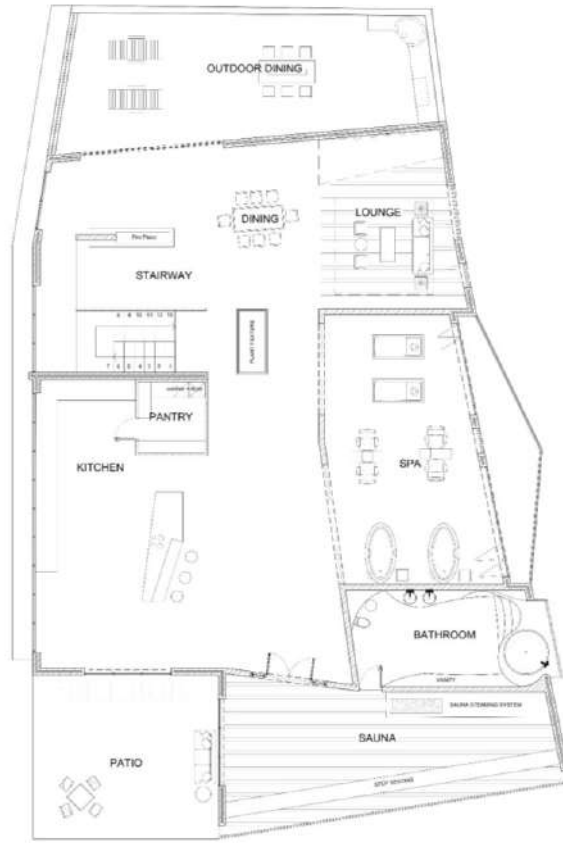


Kitchen

water : The bathroom floor is a printed beach wallpaper, covered with a resin layer. The waterfalls at the pool can also display the movement of water.
earth : I've taken a very literal approach with rock climbing as a feature
air : The suspended hammock is a representation of sleeping/ lounging in the air.
fire : I used a fire pit and sauna as features/functions for fire.



Ground Floor
NTS



First Floor
NTS



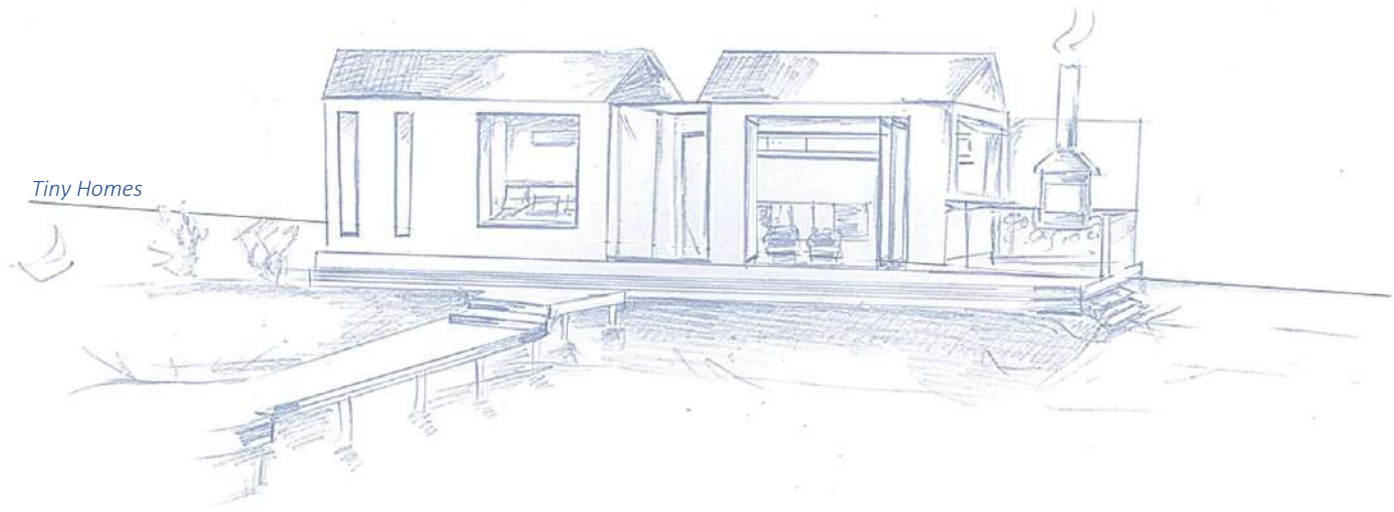
Second Floor
NTS

A light blue architectural sketch of a tiny house. The house has a gabled roof and large windows. To the right, there is a wood stove with a chimney pipe extending upwards, emitting two wavy lines representing smoke. The drawing is done in a loose, sketchy style with visible pencil or light blue lines. The background is plain white.

Tiny Homes T I N Y H O U S E
STAY UNIQUE

In this group project, we designed a Tiny home for Stay Unique. The home should house 2 to 3 people and have all amenities, such as a kitchen, outdoor braai area, heated tub, and outdoor activities or some form of entertainment.

Tiny Homes





Facade



Tiny Home Floor Plan
NTS



Kitchen



Bedroom Storage



Bedroom



Lounge



Bathroom Vanity



Shower



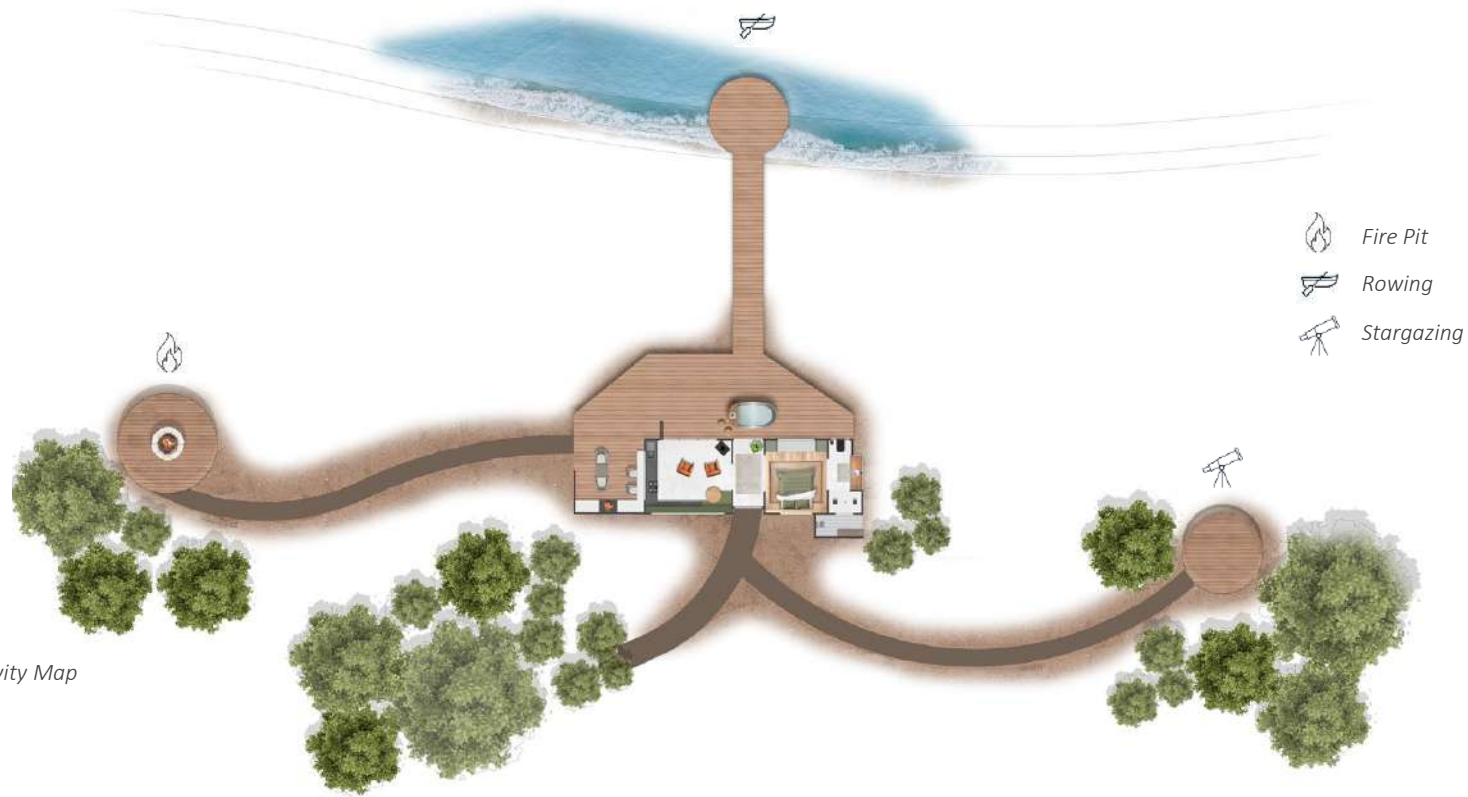
Outdoor Braai



Fire Pit



Star Deck



-  Fire Pit
-  Rowing
-  Stargazing

Activity Map
NTS

KITCHEN DESIGN
KSA

There was a competition open to all students who wanted to participate. The competition required us to design a kitchen for a disabled woman who requires both crutches and a wheelchair to move around. The project is largely focused on functionality, as Tembi, the client, requires a kitchen where she could be self-sufficient.







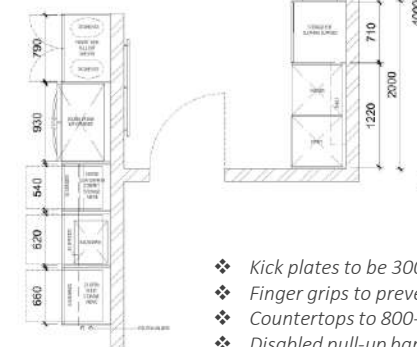
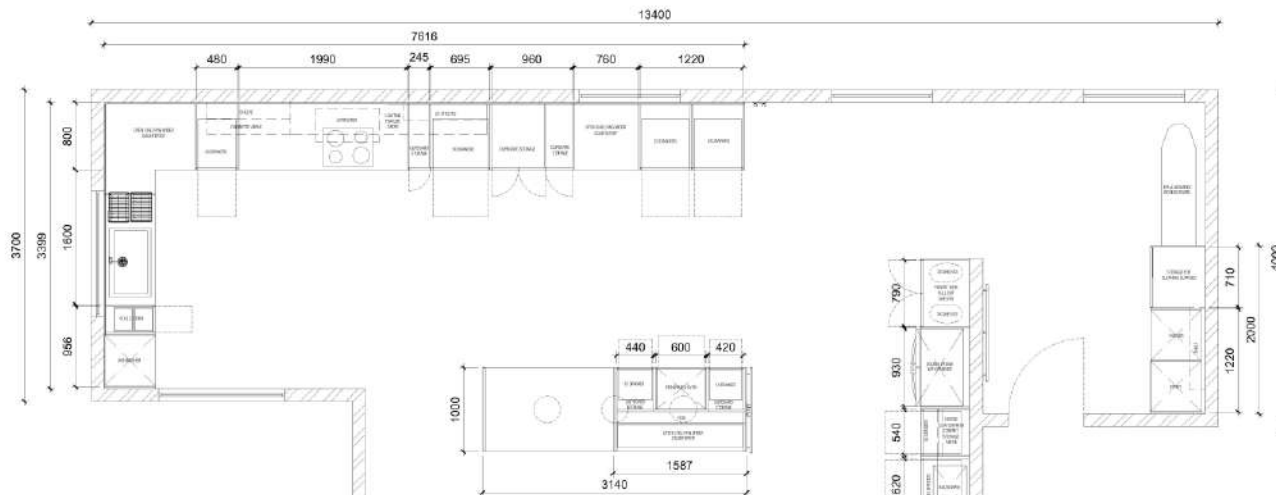
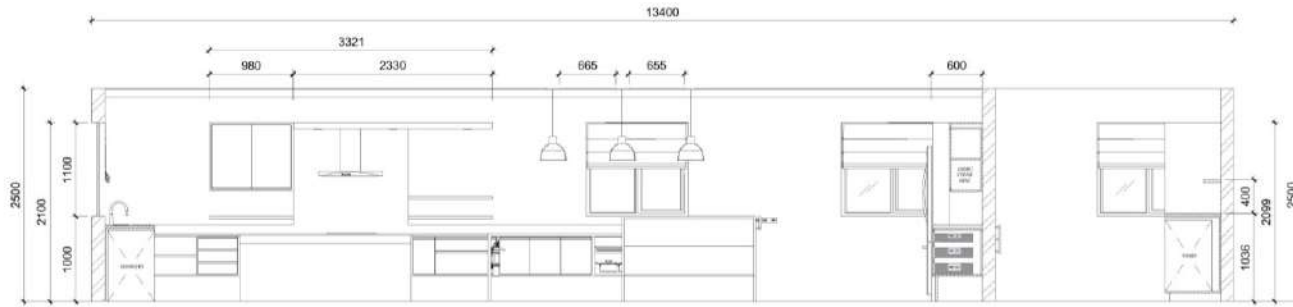
Fridge/ Coffee Station



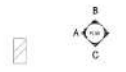
Laundry Nook



Kitchen Island



- ❖ Kick plates to be 300mm FFL.
- ❖ Finger grips to prevent collision.
- ❖ Countertops to 800-850mm FFL.
- ❖ Disabled pull-up bars and crutch holders in each section of the kitchen.
- ❖ Open spaces beneath workspaces like sink/ stove.



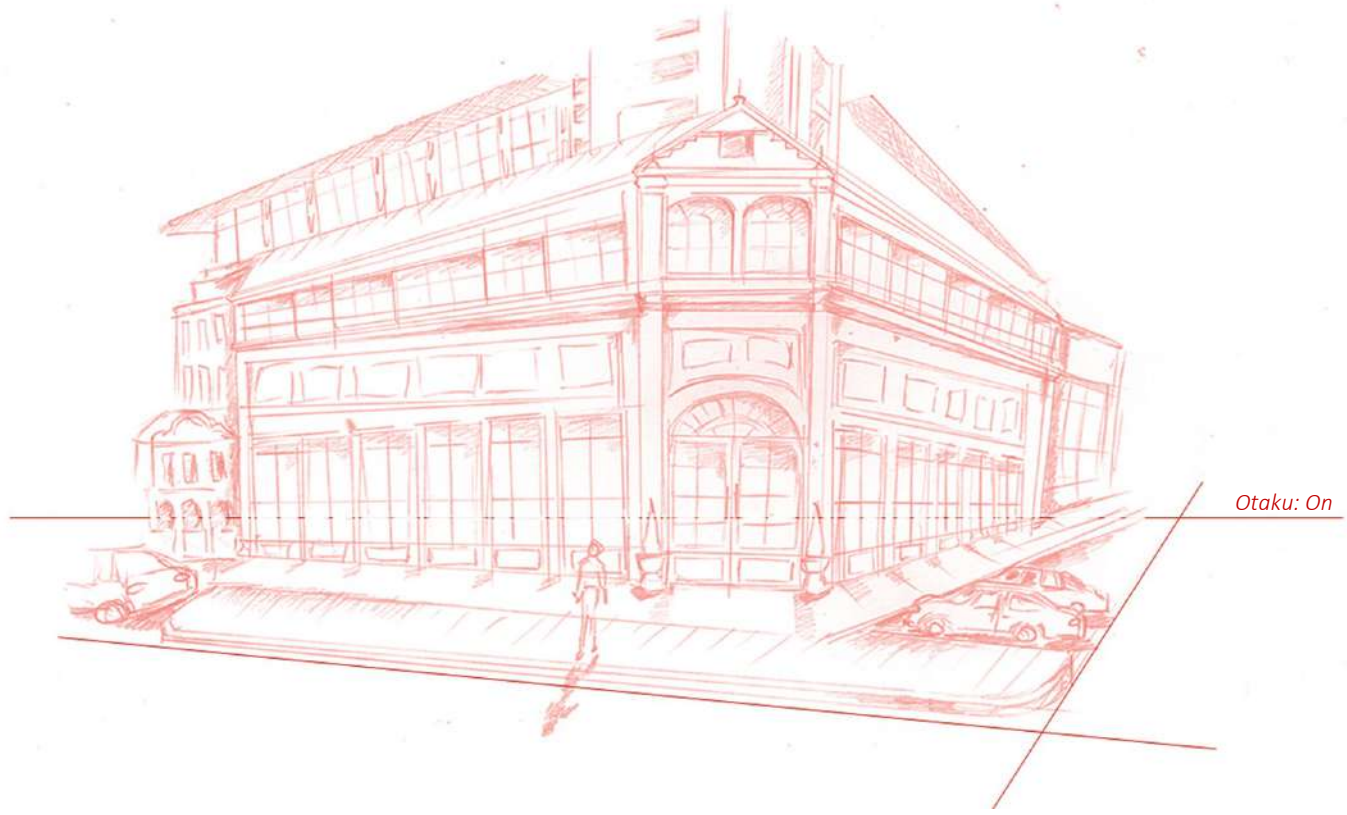


RETAIL DESIGN

OTAKU:ON

Create a store layout for a specialty store. The concept should be an experience with beautifully designed displays and storage that are both functional and unique.

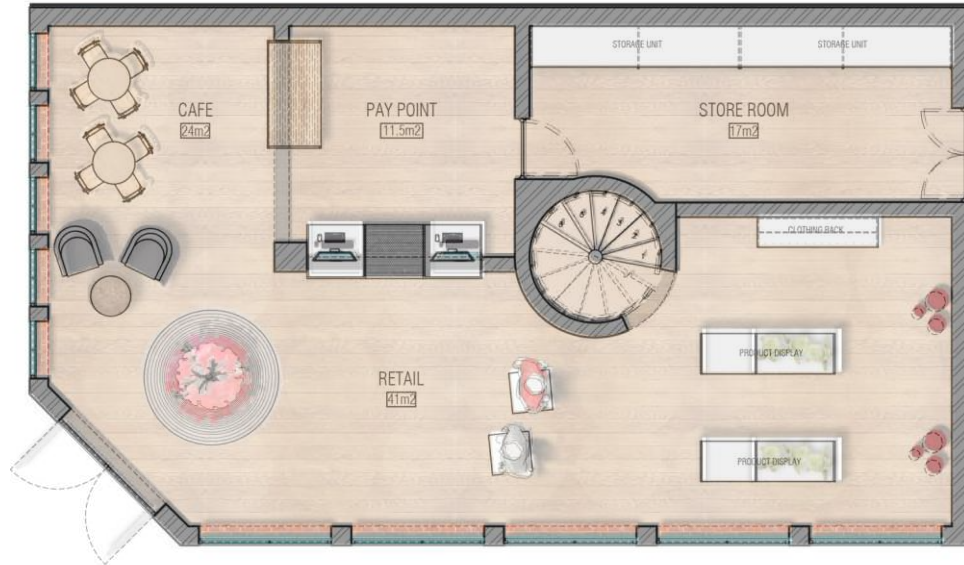
Otaku: On



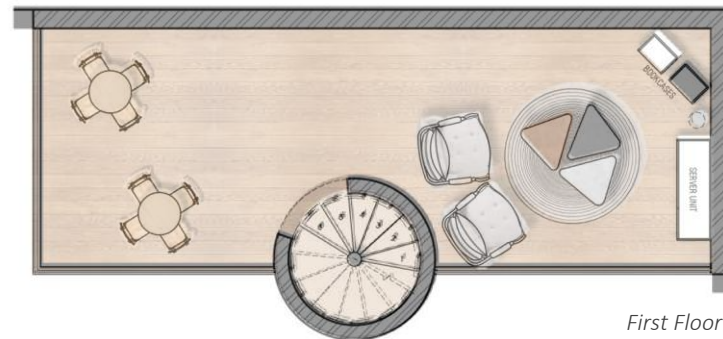


My store's name is OTAKU: ON. Otaku is a widely used Japanese term meaning anime consumer or supporter. I want this space to be an anime merchandise store and a gathering place for Otaku's where they can share their thoughts and interests with one another.

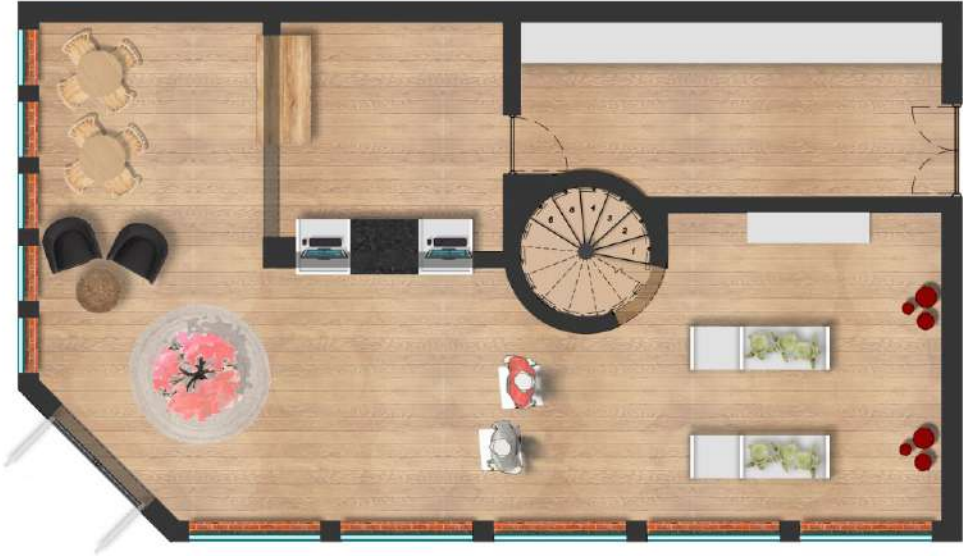
Facade



Ground Floor
NTS



First Floor
NTS



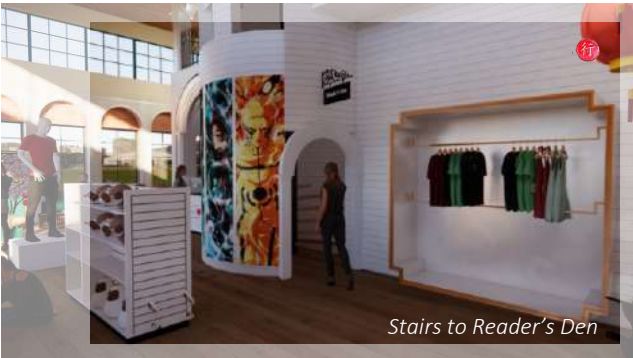
Ground Floor
NTS



First Floor
NTS



One Piece Katana Display



Stairs to Reader's Den



First Impression



Reader's Den

L o g o D e s i g n

As a part of the retail design, we were tasked with designing a logo for our store. While packaging wasn't a requirement, we were advised to showcase how the logo could be used.



An architectural sketch of a barbershop interior, rendered in a light brown, hand-drawn style. The sketch shows a long, narrow room with several barber stations, each equipped with a chair and a mirror. The ceiling features exposed wooden beams. On the right side, there is a counter or reception area with the word 'BARBERSHOP' written on the wall above it. The overall atmosphere is clean and modern.

BARBERSHOP
BARNET FAIR

Barnet Fair has recently been purchased by Aruzagraph (Pty) Ltd which owns Hermanos barbershop. Hermanos is a premium male barbershop focused on high-quality experience and luxury barber services. Barnet Fair will be repositioned from its current mid-tier barbershop to mid-upper-tier barbershop. Its focus will be on a high-quality practical service offering with a quick turnaround time and less focus on experience.

Barnet Fair



Barnet Fair





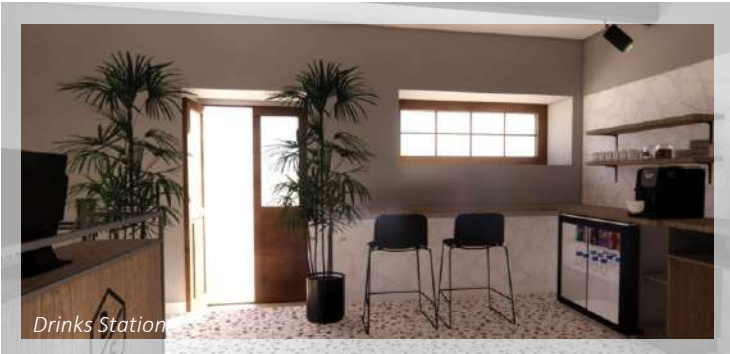
Barnet Fair Plan
NTS



Barnet Fair Plan
NTS



Waiting Area



Drinks Station



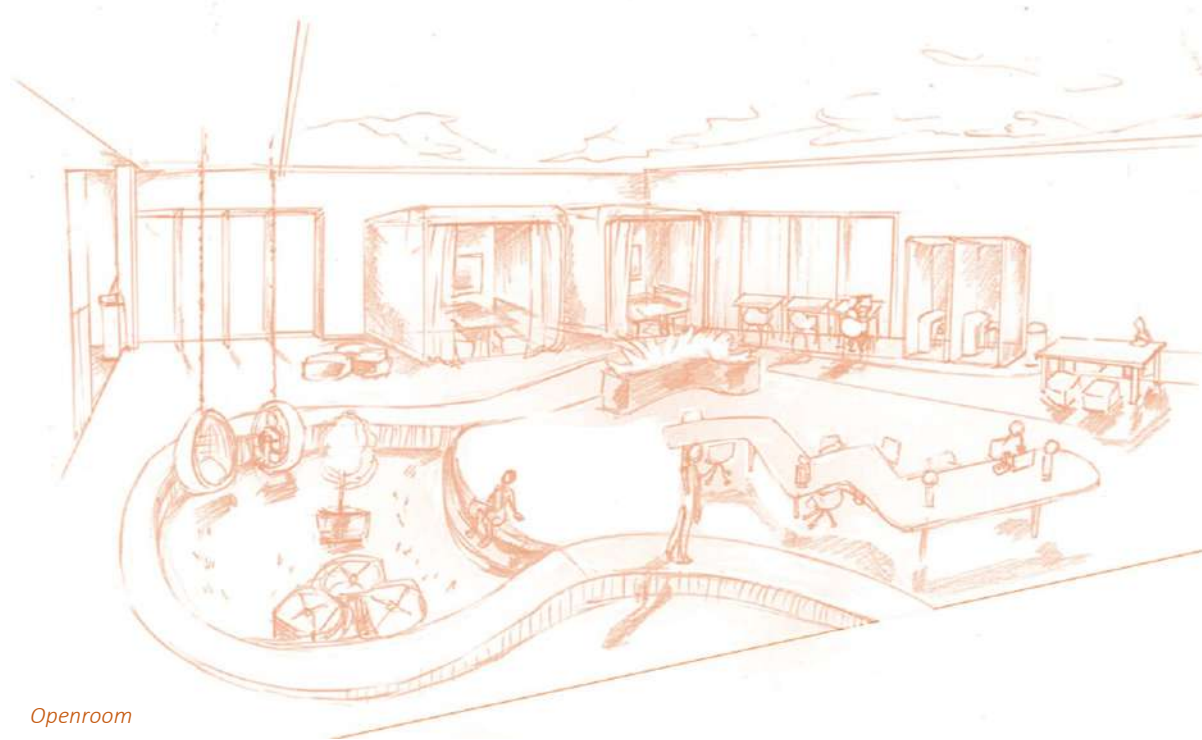
Reception



OFFICE DESIGN
OPENROOM

Design an energized, collaborative, and playful members-only work environment where like-minded, creative professionals; architects, and interior, graphic, textile, and product designers alike, share this creative space. "A common ground for uncommon people".

Openroom

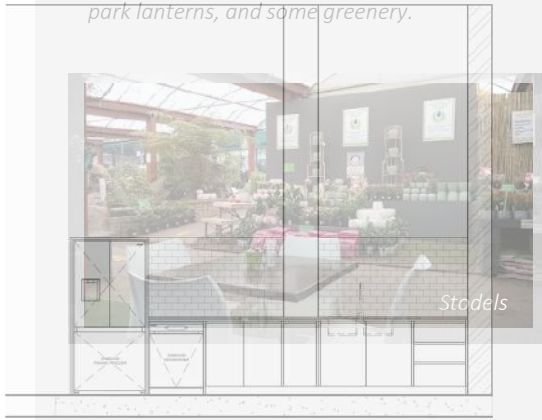


Openroom



First Impression

Inspired by places like Stodels and the Cape Garden Centre, both places are large gathering places that are open and peaceful, the perfect place to be productive. My design brings the outside, in with winding paths, park lanterns, and some greenery.



Stodels

*Kitchen Elevations
NTS*



*Floor Plan
NTS*

Inspired by places like Stodels and the Cape Garden Centre, both places are large gathering places that are open and peaceful, the perfect place to be productive. My design brings the outside, in with winding paths, park lanterns, and some greenery.



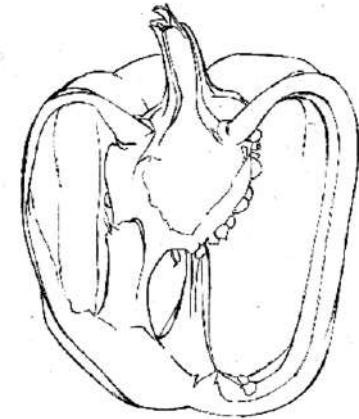
Floor Plan
NTS



Coffee Shop

*Coffee Shop
A comfortable and energizing
environment to keep you going
during long work hours.*





C O P I C M A R K E R
**H A N D
R E N D E R S**

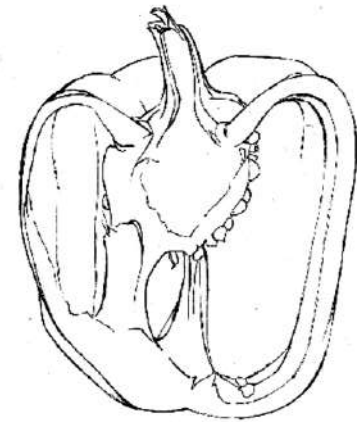
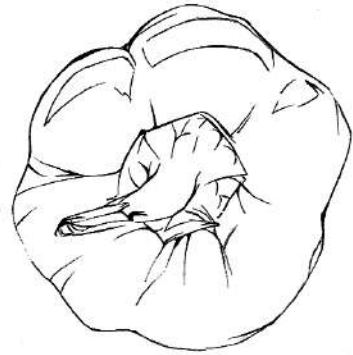
A rendering exercise to study how shadow and light interact with each other.

Rendering with COPIC markers, although time consuming, turns out to be one of my favourite past times. I really enjoyed this exercise, as well as its inclusion of technical drawing training. time-consuming

Plan

Elevation

Section



Plan

Elevation

Section



Original



Render



2point perspective render

PRODUCT DESIGN

NESTING LAMP

Conceptualize, design, and create a working TABLELIGHT: bear in mind, the purpose of your light. A decorative bed lamp with a pop of fantasy. I call it the 'Nesting lamp' because the overall design was based on a woven basket or bird's nest. Add some flowers and you get the impression of a nest that could be from a fairy tale story.



Nesting Lamp





Nesting Lamp

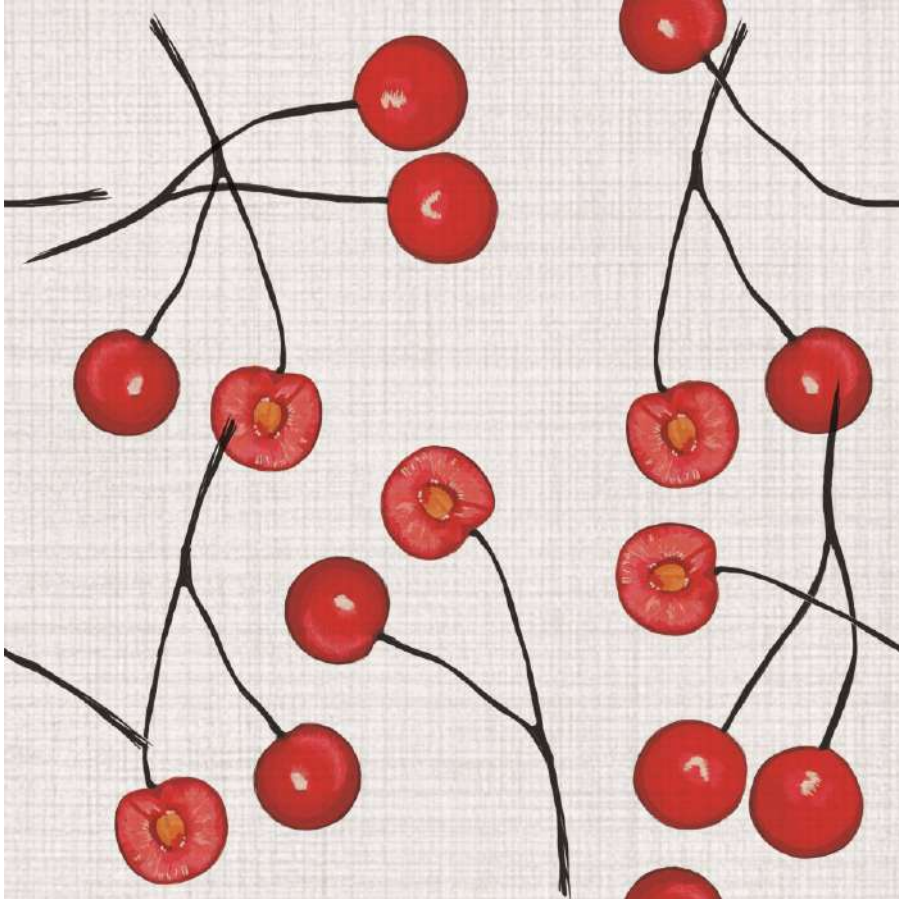




An Edible Section



Type-Oh-Graphy



An Edible Section



Type-Oh-Graphy