

RACHEL JEAN PIPER



Credit: Studio Kinship



Contents:

Project 01 - Lagoon D'Amor

Project 02 – Gmundner

Project 03 - KSA

Project 04 - C'est Si Bon

Project 05 - Caesarstone Competition

Project 06 - Finsbury Court

Project 07 - Summer House

Project 08 – Axis

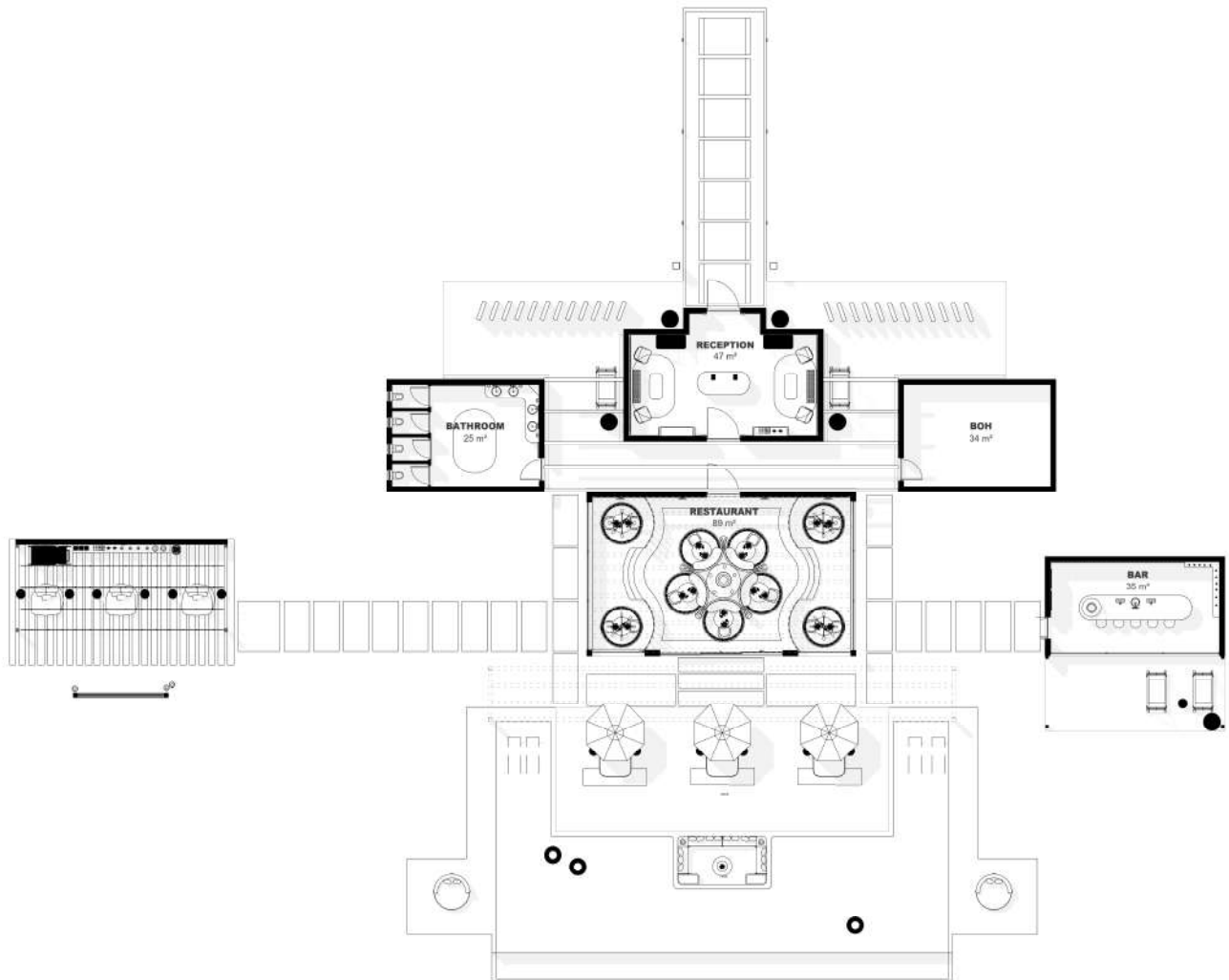
Project 09 – Object design

Project 01

D'Amor

This is your chance to design a world-class resort in South Africa, where luxury meets authenticity, and every detail tells a story of place. The challenge is to create not just a space, but an experience guests will remember for a lifetime." A visionary local developer is investing in three exclusive resorts across South Africa. Each will be entirely unique, inspired by its landscape, culture, and vernacular design language. You, as the appointed Interior Designer, must select one location and design a high-end boutique resort that celebrates its setting, responds to its clientele, and positions itself as a world-class destination brand. This project challenges you to think holistically: not only about layouts and finishes, but also about storytelling, guest experiences, and brand identity. Your design should feel authentic, aspirational, and buildable - an offering that could genuinely roll out into reality.





1 MAIN LAPA FLOOR PLAN
1:200







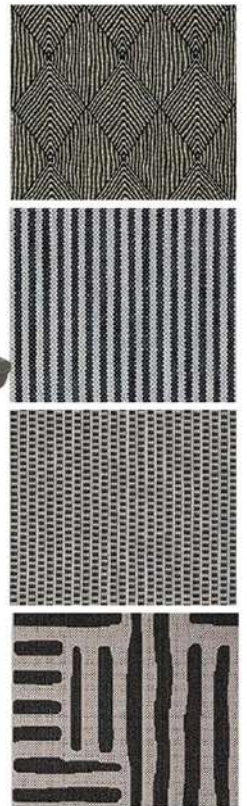


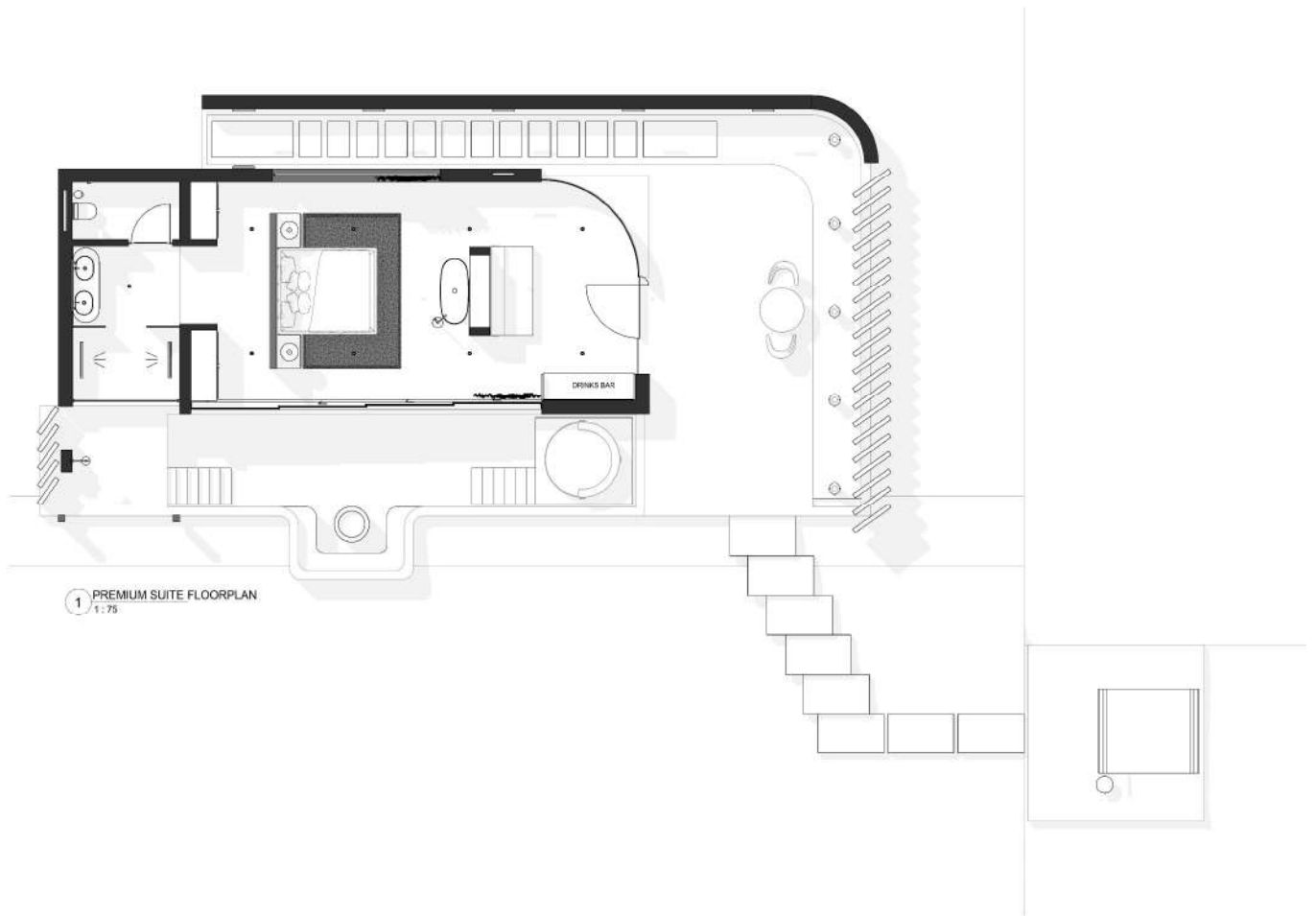






1. PEBBLE BIG TABLE LIGHT – WEYLANDTS 2. FRENCH RIVIERA ROUND RUG IN NOIR - HERTEX 3. KUNDA SIDE TABLE | SMALL – WEYLANDTS
4. FLY CHAIR SC10 & TRADITION – CREMA 5. HOURGLASS SIDE TABLE – MR PRICE HOME 6. LOAFER ^{SC24} SPACE COPENHAGEN 2019 7.
BONNET ^{SC92} SPACE COPENHAGEN 2024 8. NIRVANA OUTDOOR TABLE 4-SEATER - HERTEX





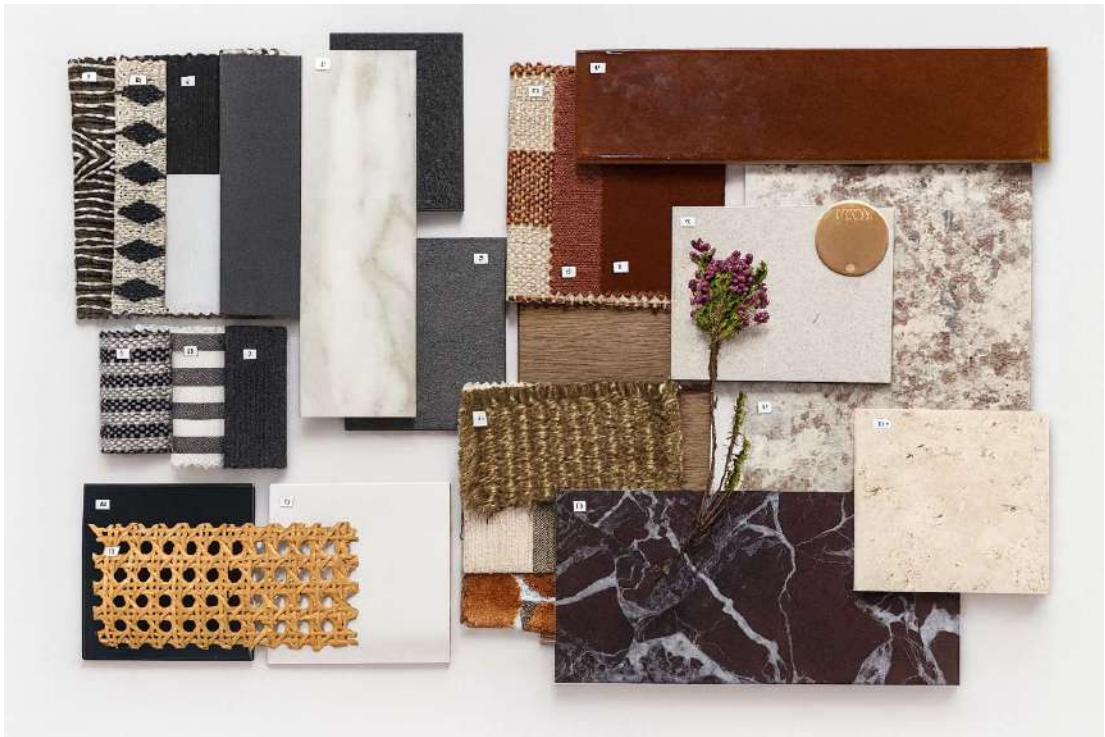








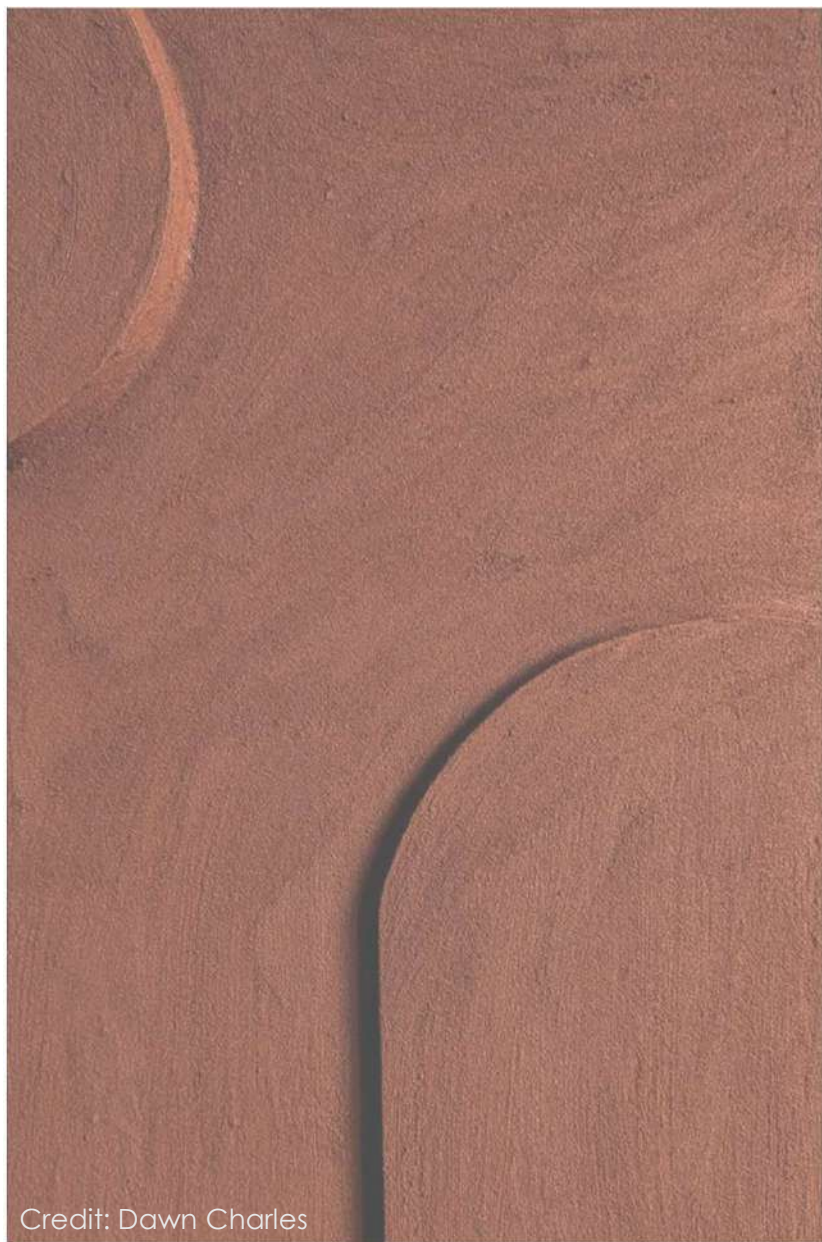




Project 02

Gmundner

Set against the raw beauty of the Namibian landscape, this project entailed designing a bespoke, high-end restaurant extension for the renowned Gmundner Lodge. Commissioned by an Austrian couple behind GMUNDNER Keramik, the space was conceived as an exclusive destination for private helicopter arrivals and immersive open-fire dining. Rooted in a Cape Dutch artisan aesthetic, the design celebrates authenticity, craftsmanship, and legacy. The interior scope included spatial planning, bespoke joinery, curated finishes, and the integration of the clients' signature "Green Flamed" ceramics as both tableware and display. Key features include a central horseshoe-shaped open-fire kitchen, flexible dining layouts, two fireplaces, lounge and bar seating, and a wine cellar for private tastings. Natural materials, whitewashed lime plaster, oak, copper, stone, and black metal, create textural richness, while sustainable details like olive-pip flooring, curated furniture, running water, and courtyard olive trees foster a deep connection to place. The result is a layered, soulful retreat that fuses rustic luxury with story and stillness.



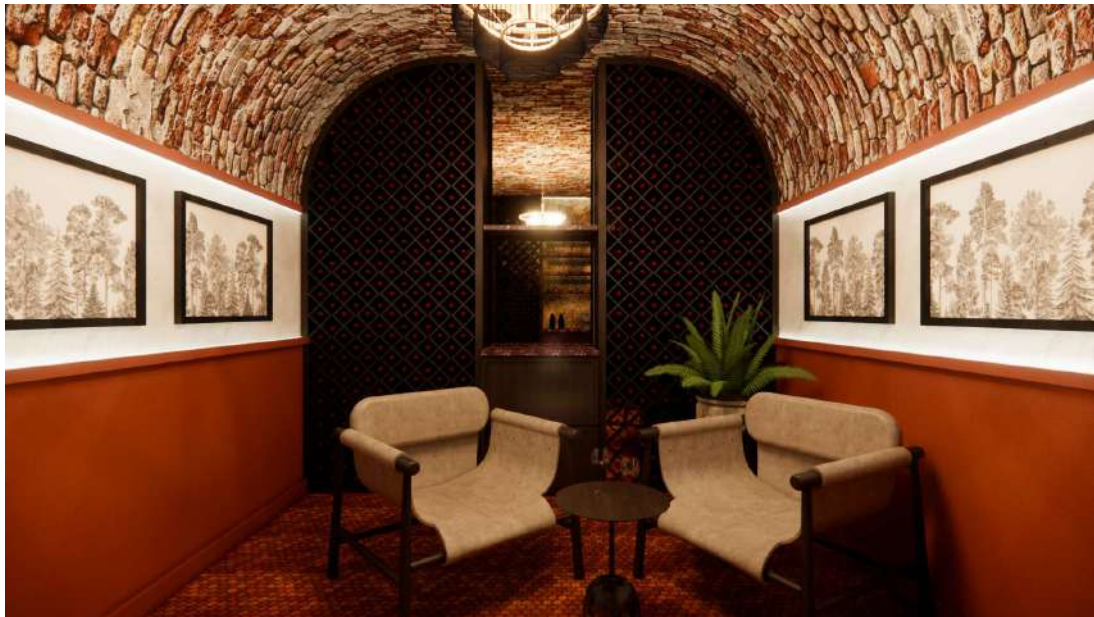
Credit: Dawn Charles











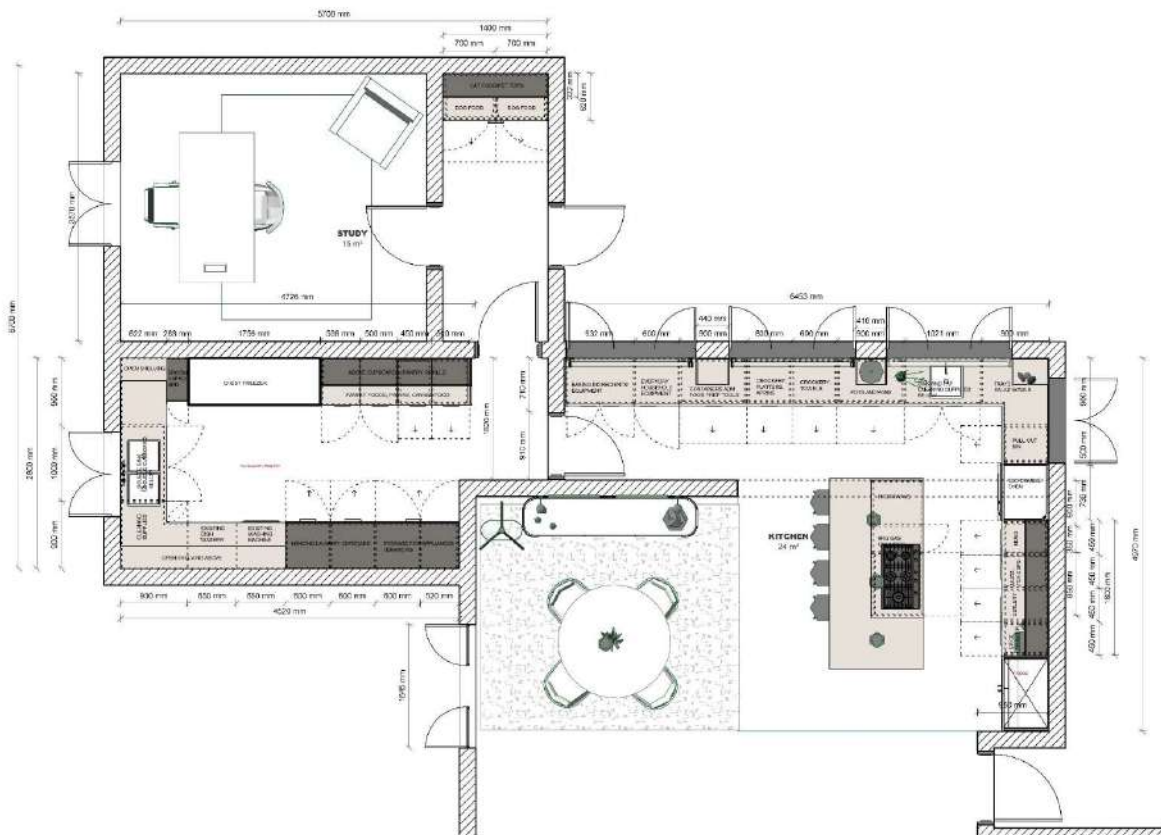
Project 03

KSA

The Hicks family is a lively, close-knit household with a 17-year-old daughter and a playful 4-year-old son. Their kitchen is the heart of their home, a space for cooking, conversation, and connection. Currently, the kitchen is outdated, poorly laid out, and separated from the lounge, making it difficult to engage as a family while preparing meals. Their goal is to create a warm, modern, and open-plan space that flows seamlessly into the living area and brings everyone together. They'd like to convert the carport into a scullery/laundry with a home office, while improving light through new or reconfigured windows. Aesthetic preferences include natural tones, dark grey or earthy cabinetry, and rich wood finishes. A feature seating island is essential. The overall design should balance function, comfort, and style, all within a R250 000 budget.



Credit: FIFBackgrounds







Project 04

C'est Si Bon

C'est si Bon is envisioned as a refined beachfront escape along one of the world's most iconic shorelines, where barefoot luxury meets the gentle rhythm of Clifton's tides. The clients requested an interior décor proposal for two luxury villas (*Villa Étoile* and *Villa Soleil*) with a focus on soft furnishings, spatial layering, and window treatments. The architectural foundation and fixed joinery were already in place, guided by a natural material palette of stone, plaster, and solid wood, with no use of faux finishes. My role was to further develop the concept by curating light, textured fabrics and creating thoughtful spatial compositions that captured a relaxed, coastal elegance. Each student was assigned one villa and tasked with delivering a uniquely layered interpretation of the barefoot luxury aesthetic.



Credit: Milk + Chocolate







Project 05

Caesarstone Competition

The Caesarstone Student Designer Competition 2025 challenges participants to design an inclusive urban retreat that promotes wellbeing through the thoughtful integration of nature, architecture, and the five senses. Set along the banks of Emmarentia Dam in Johannesburg, the site calls for a sensory-rich experience, a refuge from the overstimulated, hyper-connected world where visitors can reflect, reconnect, and recharge. Rooted in empathy and inclusivity, the design must be accessible to all and engage the senses of sight, sound, touch, taste, and smell. The brief encourages a retreat that is immersive, nature-centred, and deeply human using materiality, spatial awareness, and environmental storytelling to create harmony between people and place. Entrants must respond with a clear concept, strong visual presentation, and a sensitivity to context, ensuring that the space serves as a meaningful antidote to digital overwhelm and societal disconnection.



Credit: Moreen M Evans





Project 06

Finsbury Court

Your destination hotel must be located in South Africa. It should be designed with South Africans in mind while celebrating the inherent beauty of its location. The design language must be contemporary, progressive, and internationally competitive. The hotel must express a core identity not rely on decorative add-ons or curio-style design. You are required to brief the AI of your choice to generate initial design ideas for your hotel. Using the AI's results as a starting point, you must then apply your own point of view to either substantially improve upon, or completely reject, the AI results in order to generate a unique, authentic experience. Finally, give your hotel an appropriate name that reflects and reinforces your design thread.



Credit: Volodymyr Konko | Dreamstime









Project 07

Summer House

The Glencairn Hotel, a timeless gem nestled in history, awaits a restoration and revival that honours its rich past, while embracing the future with opulent flair. Our vision for this project is to encapsulate the essence of maximalism, weaving together a tapestry of antique pieces and intricate detailing to breathe new life into the old soul of the hotel. Each corner will tell a story of the era, inviting guests to immerse themselves in the charm of the 'old days' while indulging in modern luxuries. The hotel needs to celebrate local design and where possible the original art, floors and antiques should be re-used.



Credit: Zofia & Co



FLOOR PLAN
SCALE: NTS









1. Potted fig tree - Woolworths
2. Bright side 4 – Allied Maker
3. String attached lounge chair – Studio882
4. Bloom hanging pendant – Weylandts
5. Chez Pitou Black Wood & Woven Cane Bar Stool – Rockett st George
6. Ellipsis 3 – Allied Maker
7. Outdoor Faux Rattan Bawang Chair
8. Alabaster Eclipse – Allied Maker

Project 08

Axis

This brief challenges you to design a commercially viable occasional table either for indoor or outdoor use that strikes a balance between creativity and real-world functionality. Whether it's a side table, coffee table, or server, your design must be distinctive, desirable, and ready for market. You will step into the role of a product designer and manufacturer, exploring ergonomics, proportions, materiality, and detailing through sketching, Revit modelling, and refinement. To bring your vision to life, you'll produce a scaled 3D-printed prototype, a professional set of assembly drawings, a detailed product spec sheet, and three compelling Instagram posts designed to capture attention and communicate your design's unique value.



Credit: Raphael Sloane

AXIS

RACHEL JEAN PIPER



THE AXIS TABLE IS A MODULAR DESIGN WITH A CENTRAL VERTICAL ROD THAT ALLOWS LAYERS TO BE STACKED, ROTATED, AND INTERCHANGED EASILY. INSPIRED BY ARCHITECTURAL COLUMNS, SPINNING TOTEMS, AND MID-CENTURY MODULAR FURNITURE, IT SHOWS PLAYFUL GEOMETRY AND PRECISE CRAFTSMANSHIP. MORE THAN JUST FURNITURE, IT CELEBRATES ADAPTABILITY, CREATIVITY, AND THE BEAUTY OF EVOLVING DESIGN.

PRODUCT CODE: SKU 200426

DIMENSIONS:

HEIGHT: 923 mm

WIDTH: 647 mm

DEPTH: 647 mm

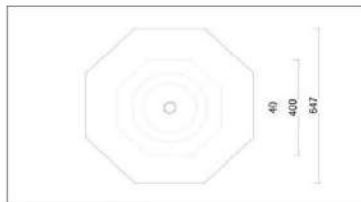
FINISH: OAK WOOD



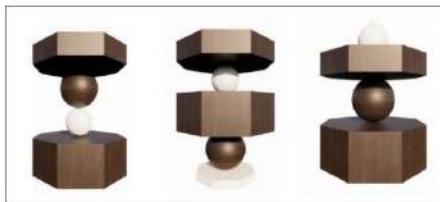
DARK OAK TIMBER



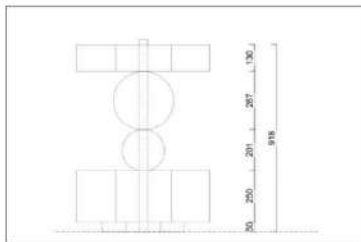
IVORY MARBLE



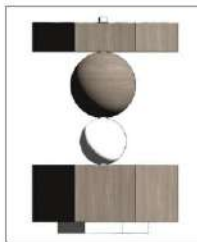
PLAN ELEVATIONS



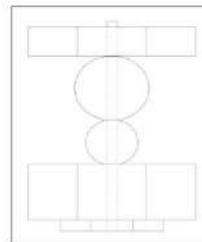
DIFFERENT CONFIGURATIONS



ELEVATION DIMENSIONS



ELEVATION



ELEVATION



Project 09

Object Design

We are excited to challenge you to create a signature chair that incorporates the 5 R's (reduce, reuse, recycle, repurpose, and refuse) in your design process. This is an opportunity for you to showcase your commitment to promoting sustainable design while creating beautiful and economically viable solutions.

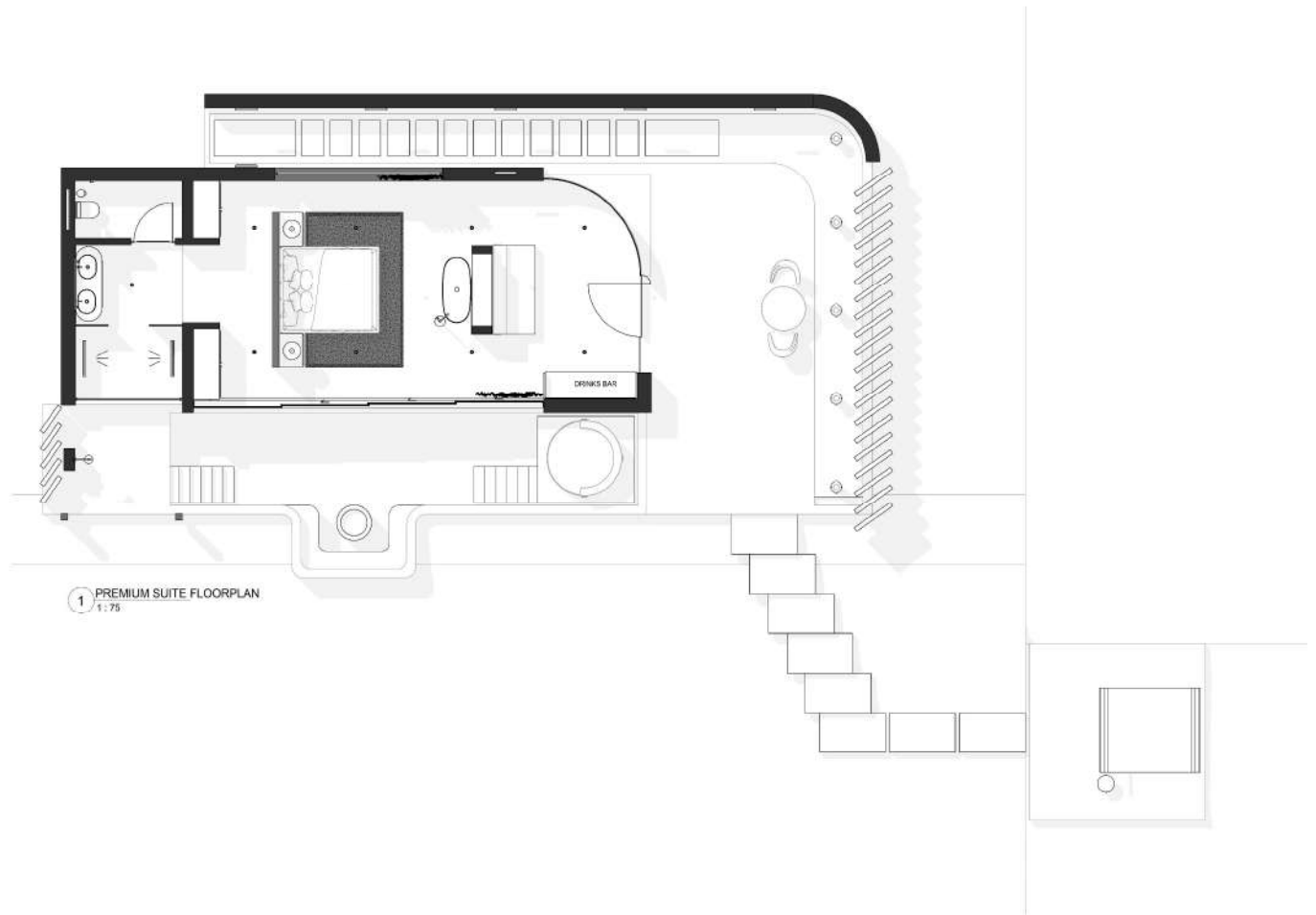


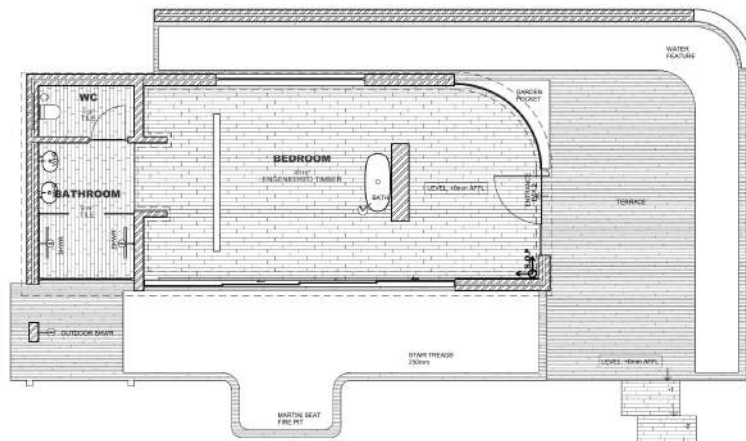
Credit: Jorunn Hron



Project 01

D'Amor





1 PREMIUM SUITE FLOORPLAN
1:75

FLOOR FINISHES LEGEND	
FLOOR FINISH	
	ENGINEERED TIMBER Oak - Rustic Grey Knot (OODGE) Boca Downward (OY GL) 450x75 1200x250x1800 (Metric) LENGTH 1800mm
	POMERAN TILE POMERAN TILE SUPPLY 120x120 1200x1200 10 mm
	WOOD DECKING WOOD DECKING (CANE TOWN) 120x120 1200x1200 10 mm 1200x1200x1800 (Metric) 1200x1200x1800 (Metric) 1200x1200x1800 (Metric)
FLOOR FINISHES NOTICE	
All finishes to comply with SANS 10400.	
Dimensions shown for reference only. Contractor to verify on site.	
All finishes to align with FFL + level (as indicated) or finished floor.	
Where floor material is used, provide transition strip or threshold detail.	
Minimum: 100mm x 100mm (SANS guidelines)	
Where required, provide transition strip or threshold detail.	
All external floor finishes & wet areas floor finishes to have anti-slip finish.	
All materials to be approved by Client prior to procurement.	

GENERAL NOTES
The drawings are not construction drawings. They are more detailed design drawings at a larger scale. They suggest materials, finishes and fittings, describe the intended look and feel of the design. They are not to be used in conjunction with other drawings, specifications and standards. The drawings are not to be used for construction purposes.
Any discrepancies or conflicts in drawings or specifications to be clarified in writing by the contractor with the architect. Incorrect interpretations which result in alterations shall be made good by the contractor at his own risk. Backfill to be made good by the contractor prior to approval prior to order.
All measurements to be confirmed on site. All points to be marked out on site and approved. Please see separate notes and schedule with images for detailed floor specifications. All areas to be marked and marked. All materials to be marked and marked. All materials to be marked and marked.
LIGHTING NOTES
Integrated LED lighting to be installed between the floor and ceiling to ensure design intent & details are visible. Lighting temperature to be 2000K throughout.

No.	Description	Date
1	CONSTRUCTION PACKAGE	18/11/2025

PROJECT	D'AMOR
SHEET	L0_Ground FLOOR Finish Plan

CLIENT	Barbara Strong
Date	18/11/2025
Drawn by	RACHEL PIPER
Checked by	DESIGN TIME
Project number	Project 1
Drawing number	1_1501
Scale (if A3)	As indicated
REV	1



GENERAL NOTES

The drawings represent are not construction drawings. They are more detailed development designs at a larger scale. They suggest materials, finishes and things that are standard on our designs. They should be used to help in preparation of all other drawings, lighting and coordinated systems.


Any discrepancy or omission in drawings or drawings to be created in writing by the contractor are the architect's responsibility. The architect is not responsible for construction details or construction methods. The contractor is responsible for construction details and construction methods.

All measurements to be confirmed on site. All points to be marked out on site and approved. Please see construction notes and schedule for detailed finishing specifications. All items finished to be tested and tested. All drawings & schedule notes to be used on site.

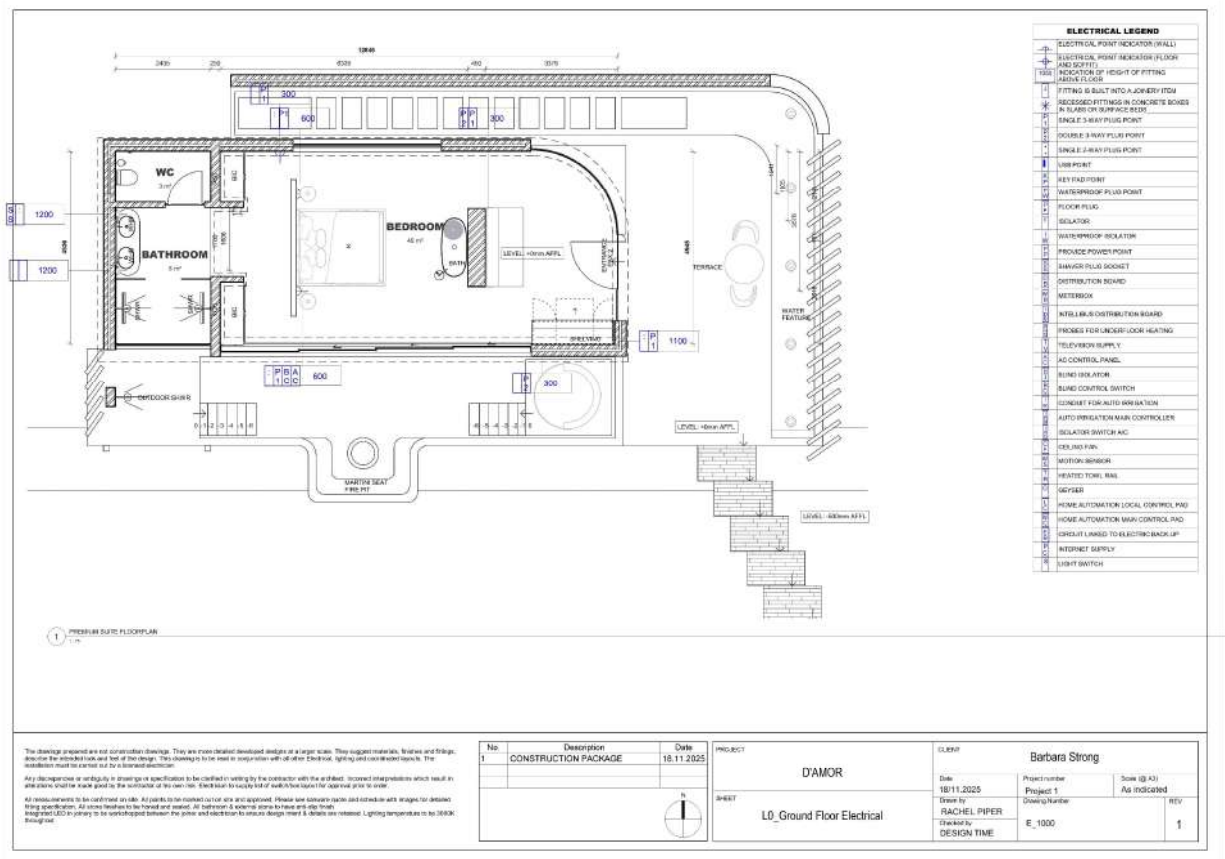
LIGHTING NOTES

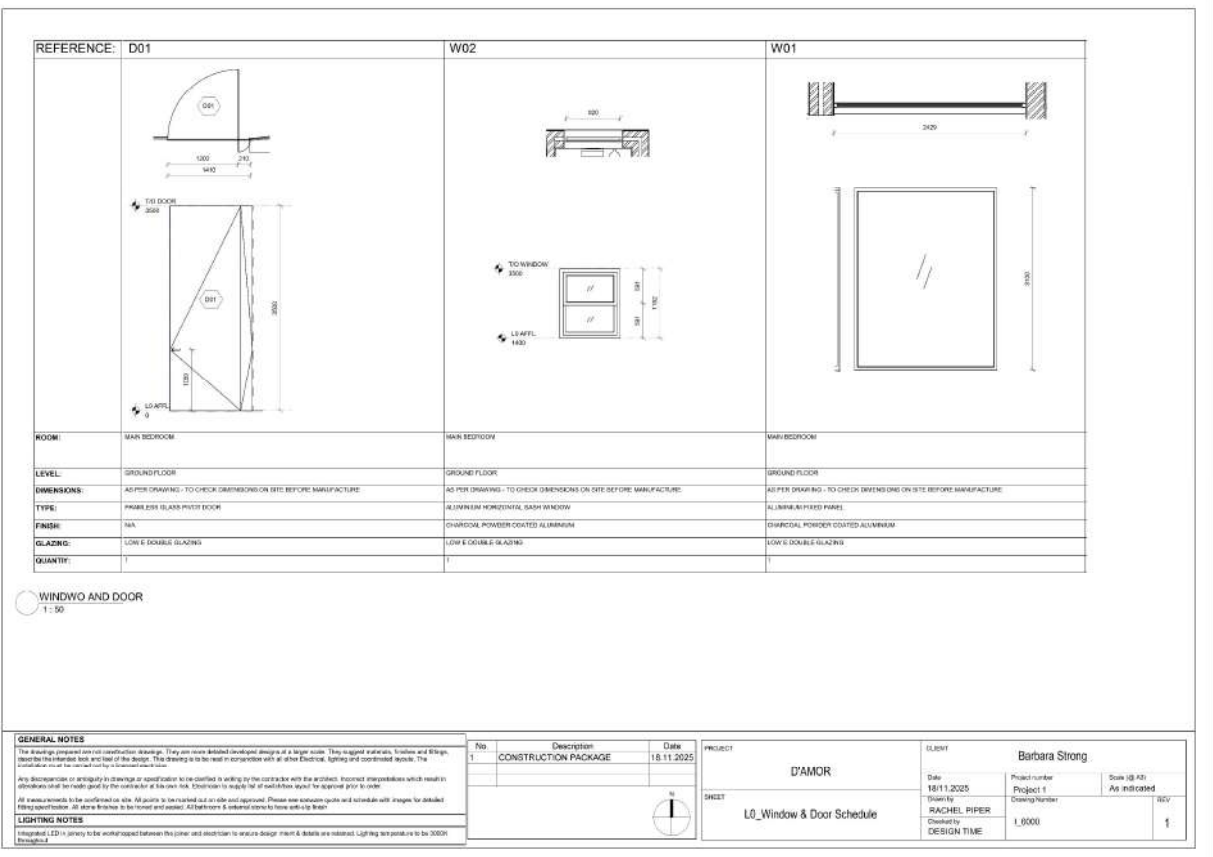
Integrated LED is primary to be employed between the joint and electrical to ensure a large joint is visible. Lighting temperatures to be 2000K.

No	Description	Date
1	CONSTRUCTION PACKAGE	18.11.2022



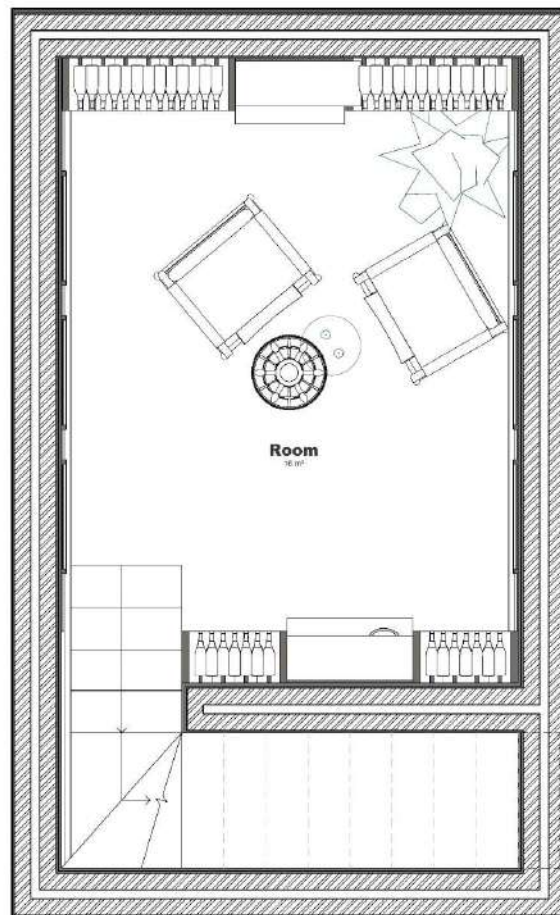
PROJECT		CLIENT	
D'AMOR		Barbara Strong	
SHEET		Date 10/11/2020	Scale (to A3) As indicated
		Drawn by Rachel Piper	Revised Number
		Checked by Design Time	1, 1200
L0_Ground Floor Ceiling Plan			1



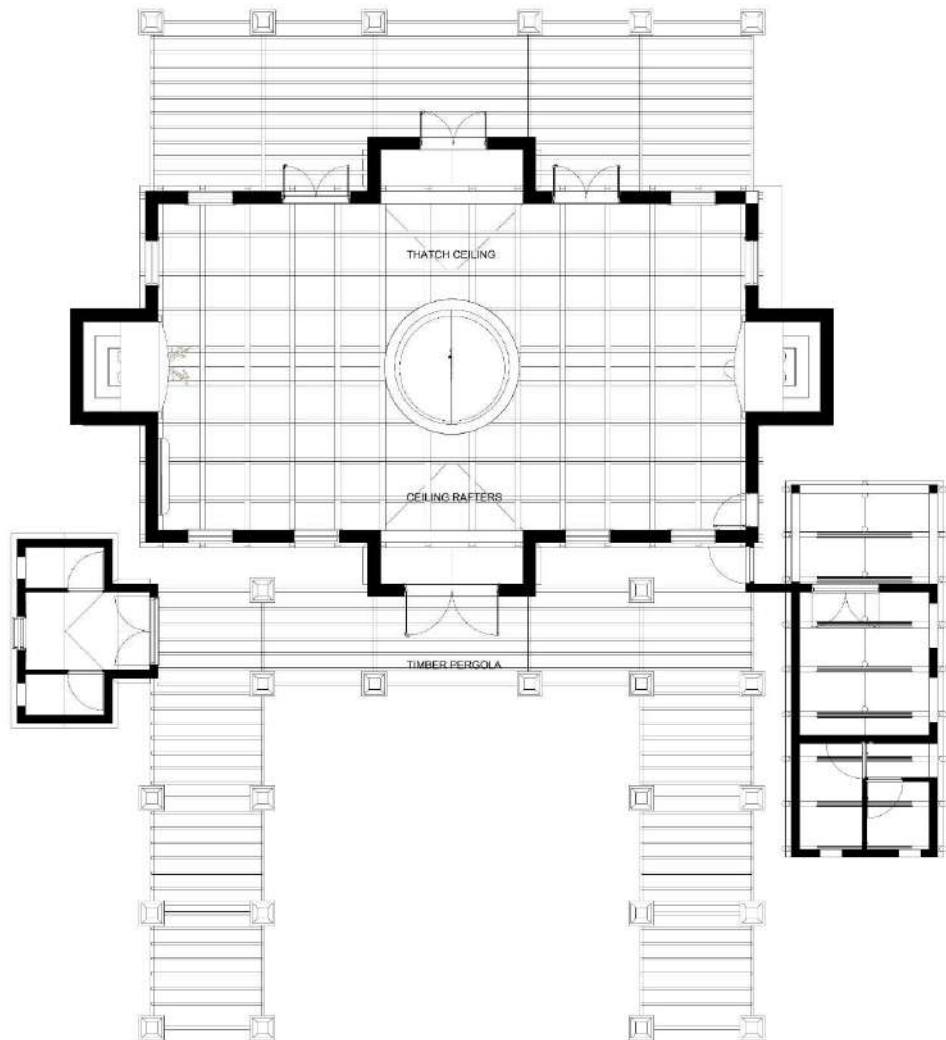


Project 02

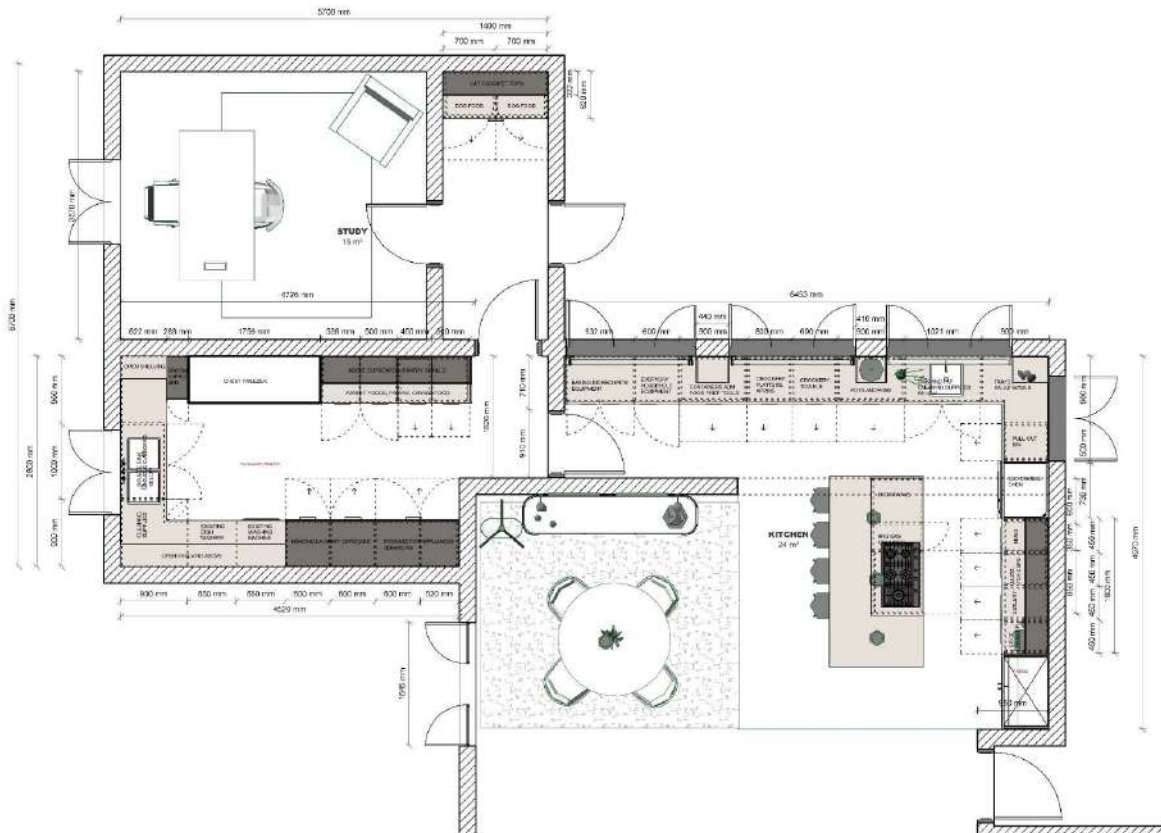
Gmundner

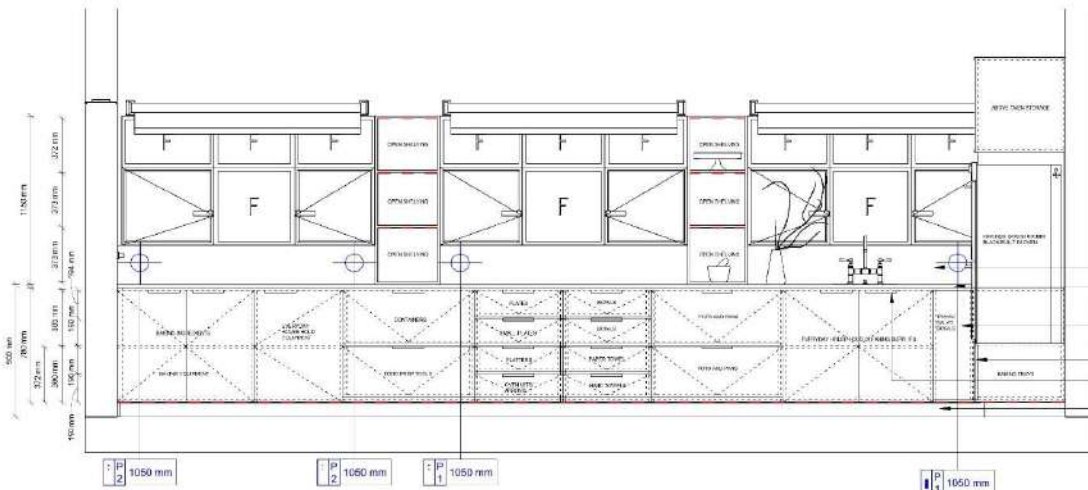


1 I. 1000_Lower Ground Level
1:25



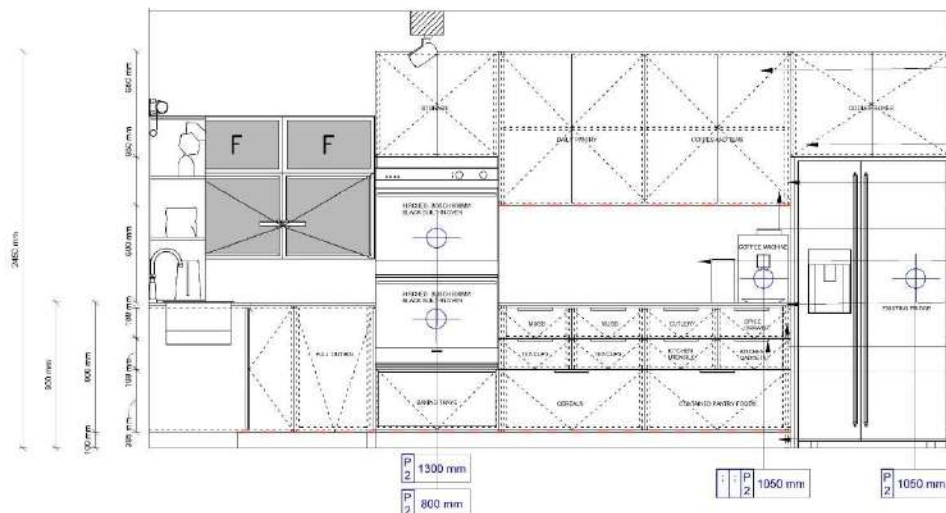
KSA





ELECTRICAL & LIGHTING LEGEND	
CAD SYMBOLS - GENERAL	
	ELECTRICAL POINT INDICATOR
	ELECTRICAL POINT INDICATOR (WALL)
	INDICATOR OF HEIGHT OF FITTING
	INDICATOR OF HEIGHT OF FITTING (JOINERY)
CAD SYMBOLS - POWER	
	SINGLE 3-WAY PLUG POINT
	DOUBLE 3-WAY PLUG POINT
	SINGLE 2-WAY PLUG POINT
	USB POINT
	POWER DOCK
	WATERPROOF PLUG POINT
	FLOOR PLUG
	ISOLATOR
LIGHTING KEY LEGEND	
CAD SYMBOLS - LIGHTING	
	CONCEALED LED LIGHTING

GENERAL NOTES	
<p>The drawings prepared are not construction drawings. They are more detailed developed designs at a larger scale. They suggest materials, finishes and fittings, describe the intended look and feel of the design. This drawing is to be used in conjunction with all other electrical, lighting and coordinated details. The installation must be carried out by a licensed electrician.</p> <p>Any discrepancies or omissions in drawings or specifications to be checked in writing by the contractor with the architect. Incomplete interpretations which result in alterations shall be made good by the contractor at his own risk. Electrical is supply (L&L) (switchgear) layout for approval prior to order.</p> <p>All measurements to be confirmed on site. All points to be marked out on site and approved. Please see separate quote and submit with images for detailed fitting specification.</p>	
LIGHTING NOTES	
<p>Integrated LED in joinery to be worktop depth between the joinery and electrical to create design intent & details are relevant. Lighting temperature to be 3000K throughout.</p>	
FITTING SPECIFICATION	
<p>All new door hinges and drawer runners to be mid-range, but bearing soft close.</p>	

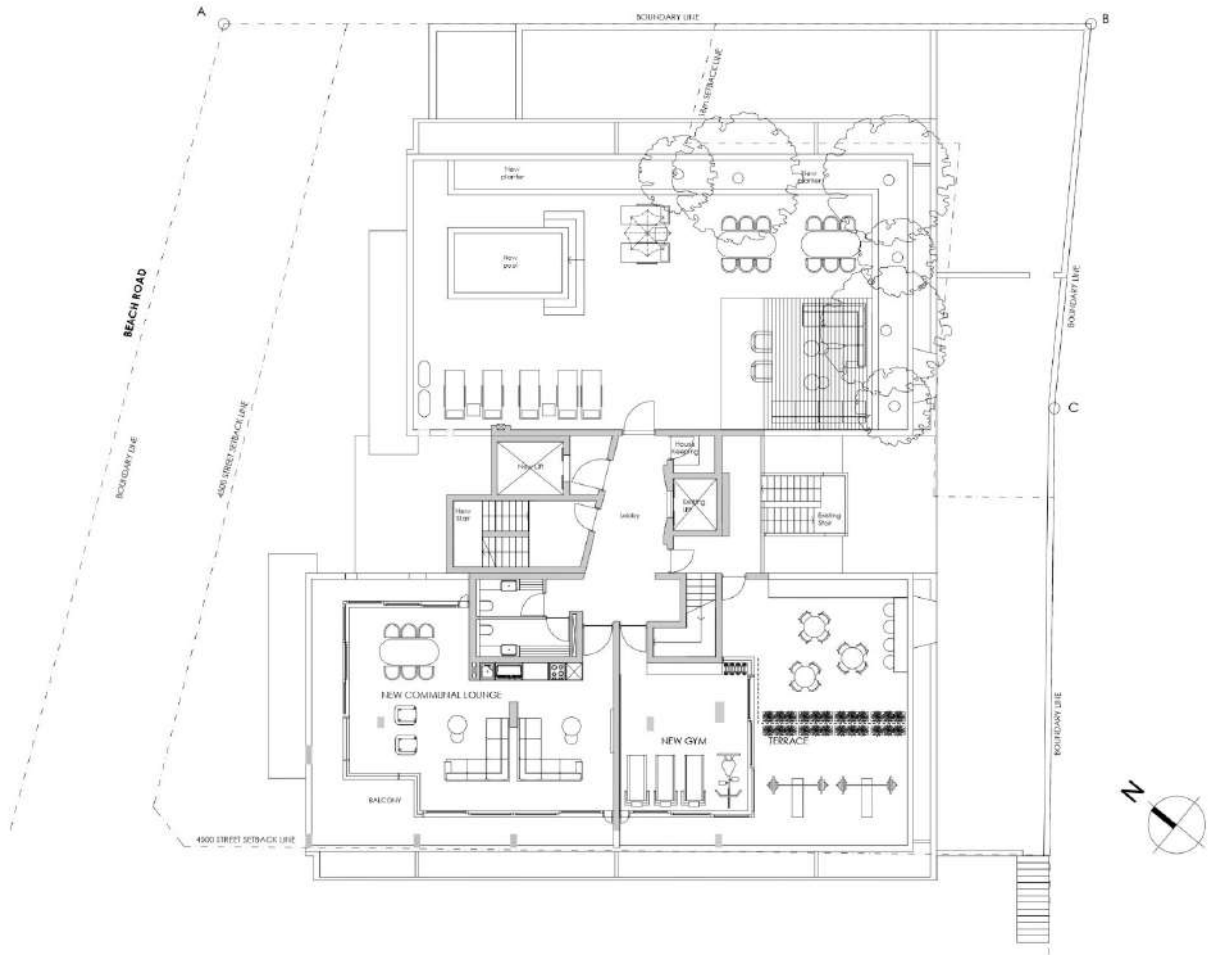


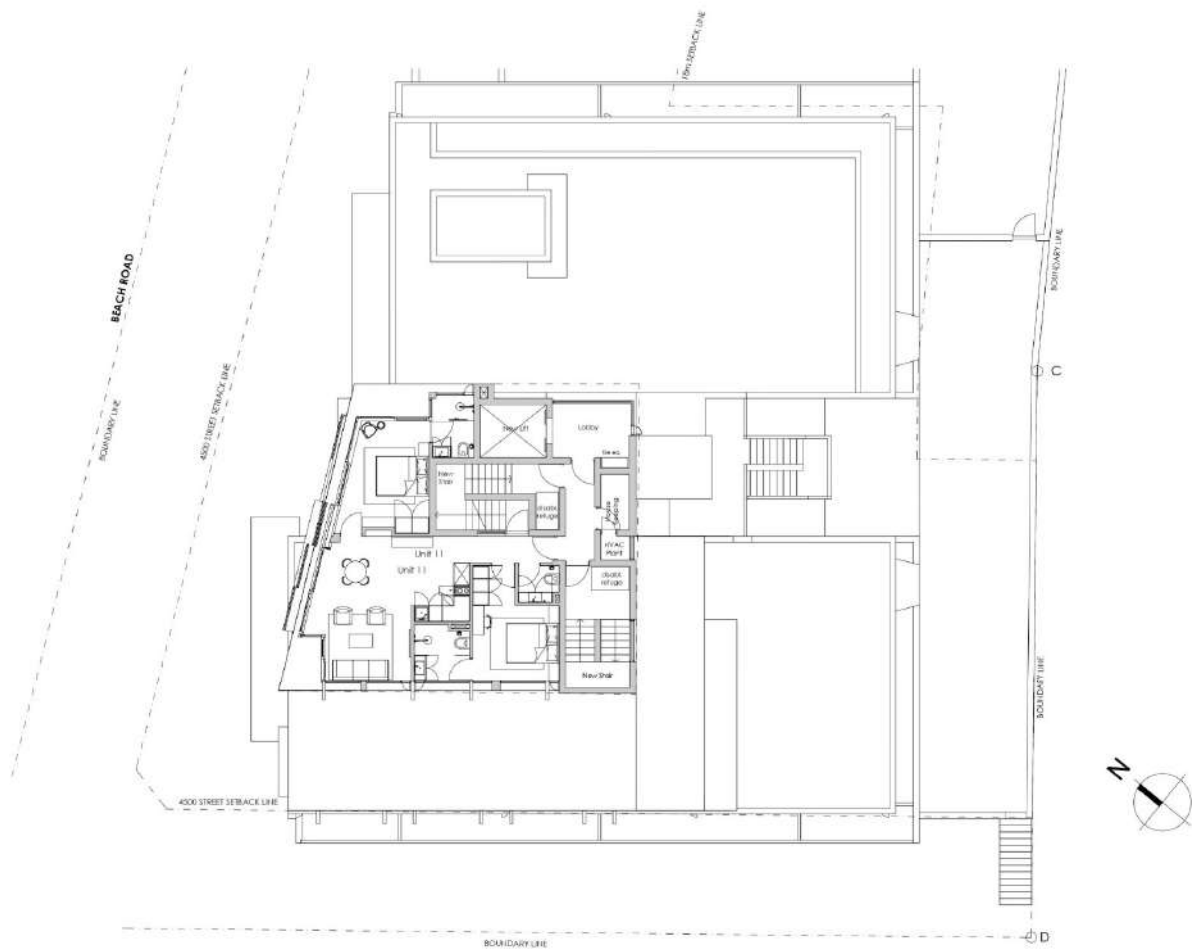
ELECTRICAL & LIGHTING LEGEND	
CAD SYMBOLS - GENERAL	
	ELECTRICAL POINT INDICATOR
	ELECTRICAL POINT INDICATOR (WALL)
	INDICATOR OF HEIGHT OF FITTING
	INDICATOR OF HEIGHT OF FITTING (JOINERY)
CAD SYMBOLS - POWER	
	SINGLE 3-WAY PLUG POINT
	DOUBLE 3-WAY PLUG POINT
	SINGLE 2-WAY PLUG POINT
	USB POINT
	POWER DOCK
	WATERPROOF PLUG POINT
	FLOOR PLUG
	ISOLATOR
LIGHTING KEY LEGEND	
CAD SYMBOLS - LIGHTING	
	CONCEALED LED LIGHTING

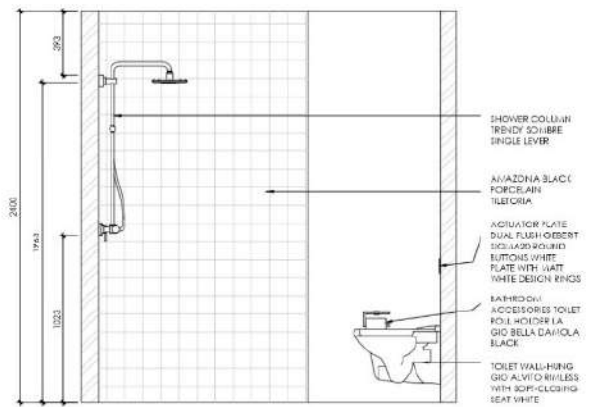
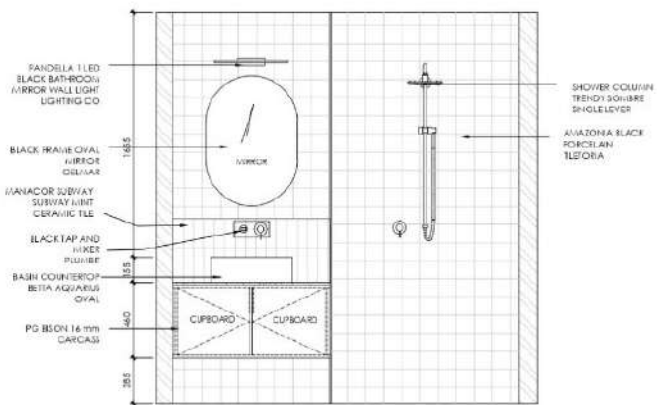
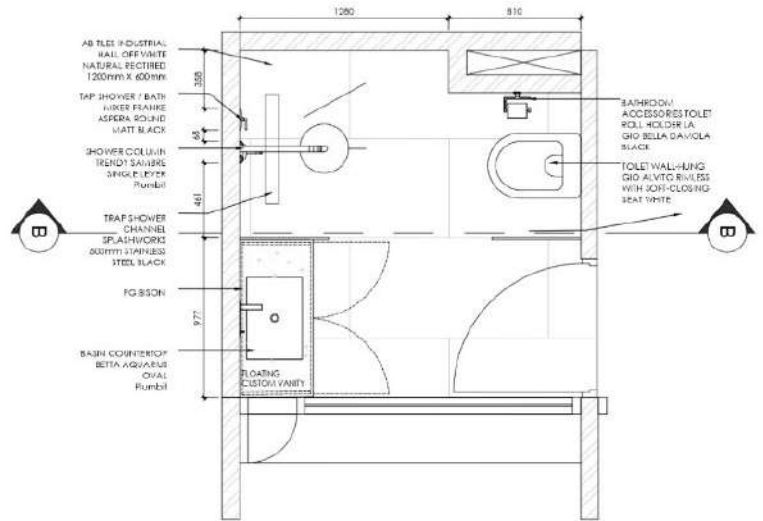
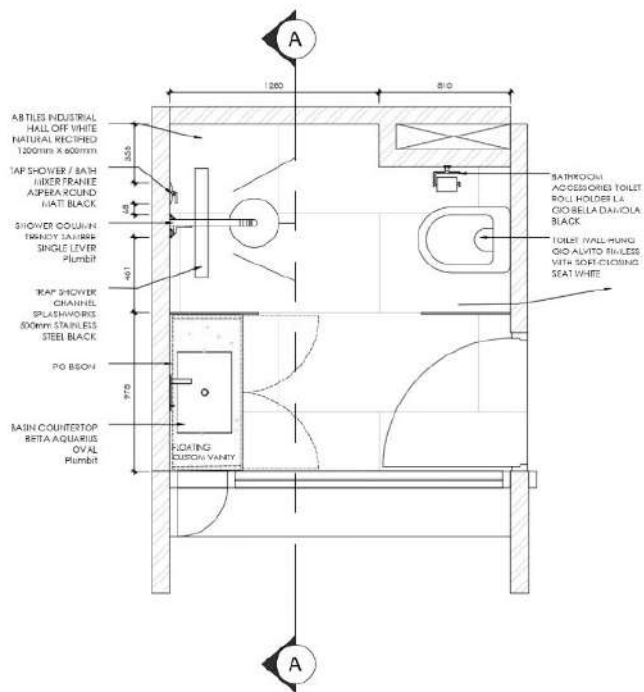
GENERAL NOTES	
<p>The drawings prepared are not construction drawings. They are more detailed developed designs at a larger scale. They suggest materials, finishes and fittings, describe the intended look and feel of the design. This drawing is to be used in conjunction with all other electrical, lighting and coordinated details. The installation must be carried out by a licensed electrician.</p> <p>Any discrepancies or omissions in drawings or specifications to be checked in writing by the contractor with the architect. Incomplete interpretations which result in alterations shall be made good by the contractor at his own risk. Electrical is supply (L&L) (switchgear) layout for approval prior to order.</p> <p>All measurements to be confirmed on site. All points to be marked out on site and approved. Please see separate quote and submit with images for detailed fitting specification.</p>	
LIGHTING NOTES	
<p>Integrated LED in joinery to be worktop depth between the joinery and electrical to create design intent & details are relevant. Lighting temperature to be 3000K throughout.</p>	
FITTING SPECIFICATION	
<p>All new door hinges and drawer runners to be mid-range, but bearing soft close.</p>	

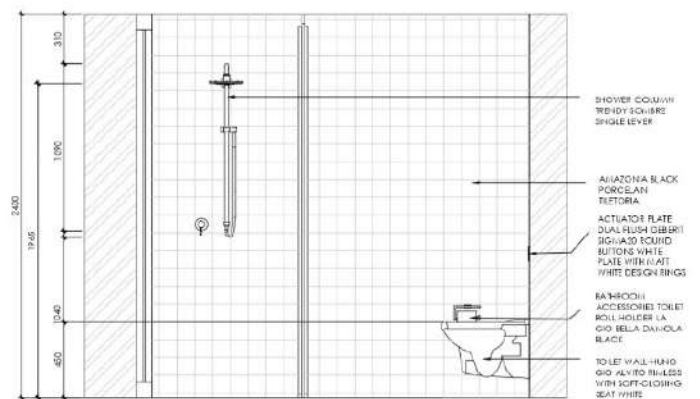
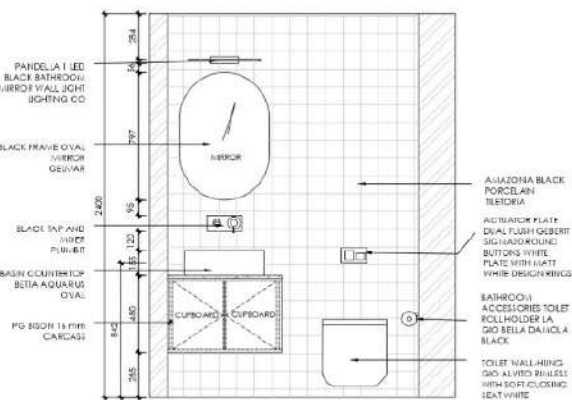
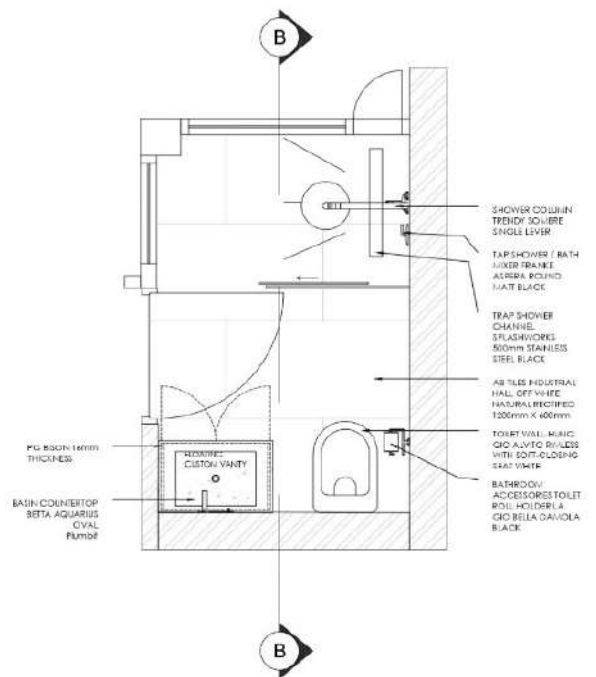
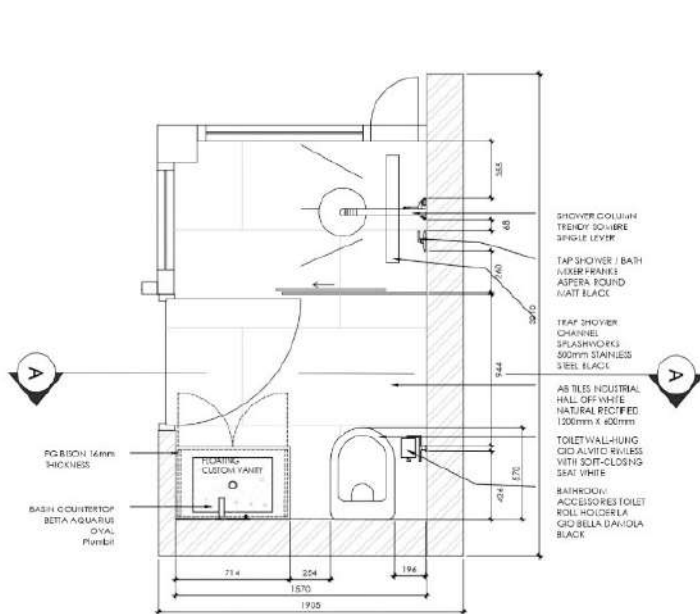
Project 06

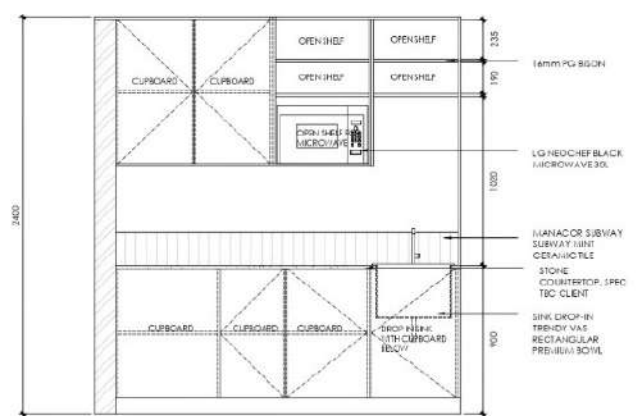
Finsbury Court





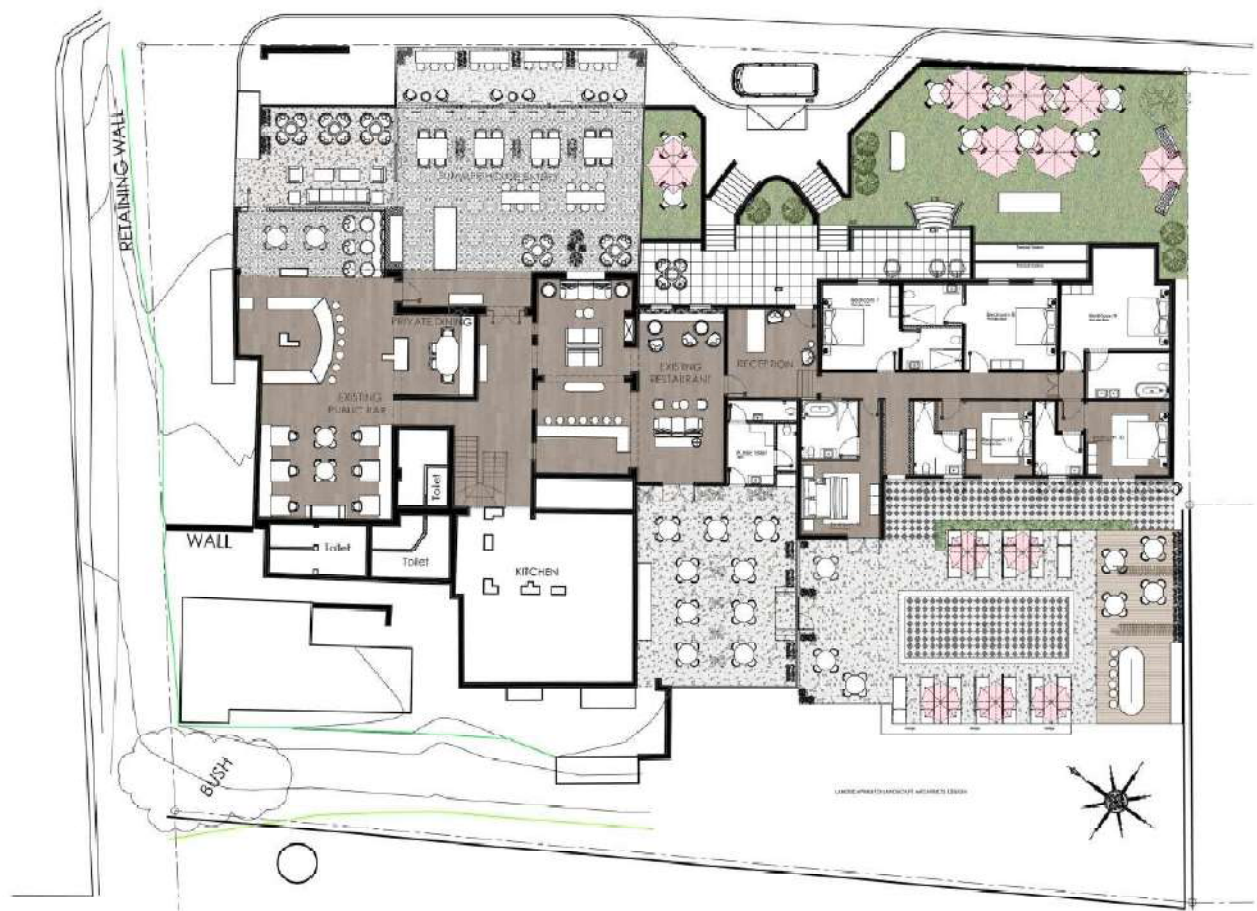




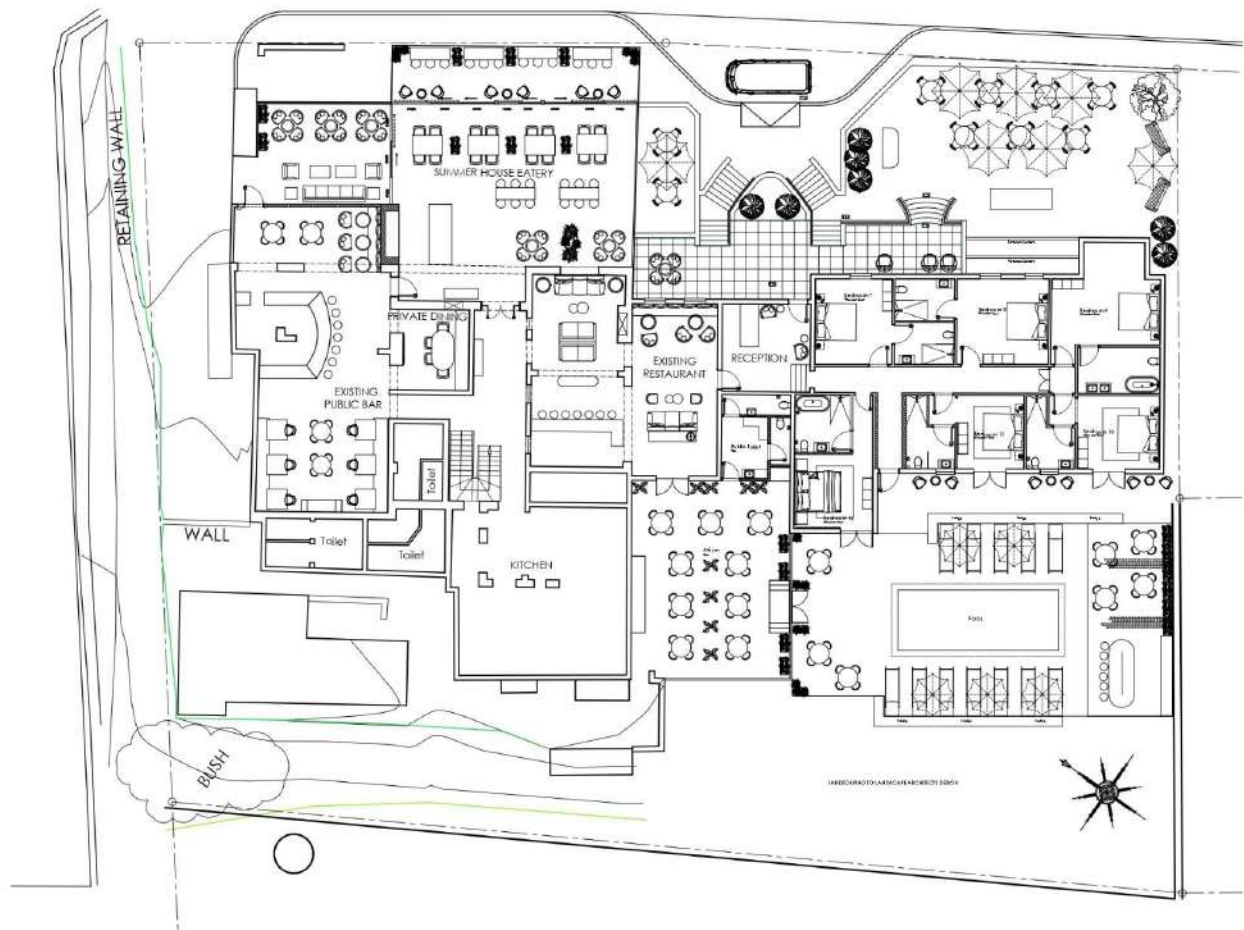


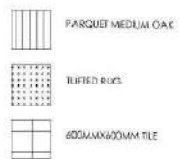
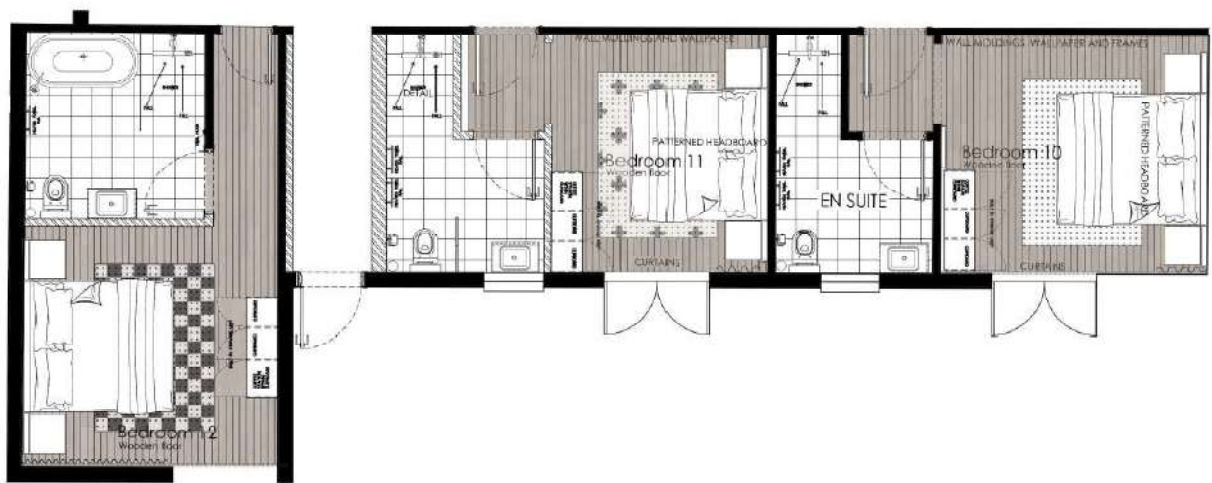
Project 07

Summer House



FLOOR PLAN
SCALE: NTS





FLOOR PLAN
SCALE: NTS

THANK YOU