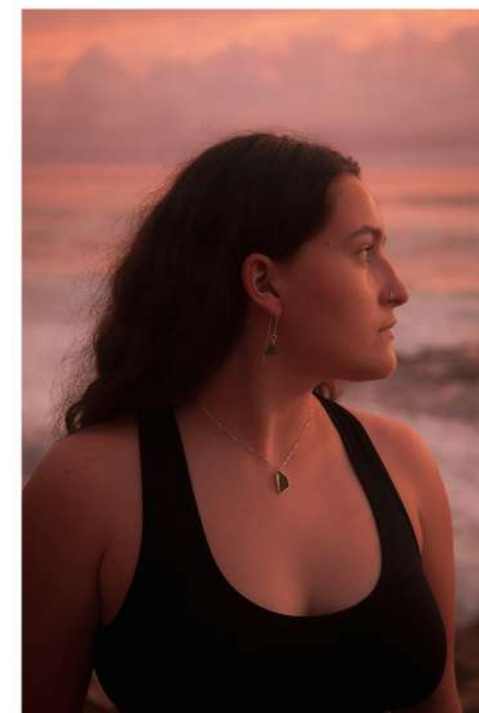


CLAIRE CUTHILL  
PORTFOLIO



HELLO!

My name is Claire Cuthill, born and raised in Cape Town, I grew up in Cape Point Nature reserve, My love for nature and wildlife grew from my childhood. I aspire to design authentic and grounded projects that align with nature. I enjoy many different design styles but I gravitate towards English country design, with a lot of patterns and colours.



FERNWOOD ESTATE  
RESIDENTIAL  
OCT 2023



PG BISON  
NATIONAL COMPETITION  
AUG 2023



STAY UNIQUE  
COMMERCIAL  
APR 2023



BOXED  
RESIDENTIAL  
SEP 2023



CAESARSTONE  
NATIONAL COMPETITION  
MAY 2023



BOXWOOD  
COMMERCIAL  
MAR 2023



ON Q  
RESIDENTIAL  
NOV 2022



WESTLAKE  
COMMERCIAL  
OCT 2022

1. FERNWOOD ESTATE - RESIDENTIAL  
FINAL PROJECT - 3RD PLACE

Nestled in the picturesque Fernwood Estate in Knysna, you'll find the exquisite House Number 19. Designed with a perfect blend of modern English interior aesthetics and a natural color palette that seamlessly integrates with the surrounding nature, this home exudes a charming lakehouse vibe. Situated on multiple levels that gracefully follow the land's gentle slope, minimal stairs ensure easy access throughout the interior. The pièce de résistance is the expansive main bedroom, boasting panoramic views of the tranquil lake, a generous walk-in dressing room, and a luxurious en suite. Two guest bedrooms, each with its own en suite, offer comfort and privacy. A small flatlet at the back of the house, accessible through a quaint courtyard, adds versatility to the living space. The open-plan living and kitchen area not only captures the mesmerizing lake view but also provides effortless access to the inviting deck and pool area. For those who love to cook, the kitchen is equipped with a well-sized scullery, making it a true masterpiece of design and comfort. This house is a harmonious blend of modern elegance and the natural beauty of its surroundings, a true gem in the heart of Knysna's Fernwood Estate.







The front door is inviting and sets the tone for the rest of the home, the creepers and plants surrounding give the home a natural and soft appearance. The front door is custom made with timber and glass.



The guest bathroom is situated near the entrance of the house. This bathroom gives a calm impression for the house. A warm and inviting palette has been used with beautiful wallpaper from Cara Saven and stunning bathroom tiles from Douglas and Jones. The bathroom has a modern English feel.



The living area has an open feeling with a high vaulted ceilings and concertina doors onto the patio. The furniture choices are more classical which is in line with the client. The tones are warm and natural, relating the design to the vegetation in Fernwood estate. A front of house kitchen with island allows the owners to enjoy the lagoon view while cooking.





The front door is inviting and sets the tone for the rest of the home, the creepers and plants surrounding give the home a natural and soft appearance. The front door is custom made with timber and glass.



The guest bathroom is situated near the entrance of the house. This bathroom gives a calm impression for the house. A warm and inviting palette has been used with beautiful wallpaper from Cara Saven and stunning bathroom tiles from Douglas and Jones. The bathroom has a modern English feel.

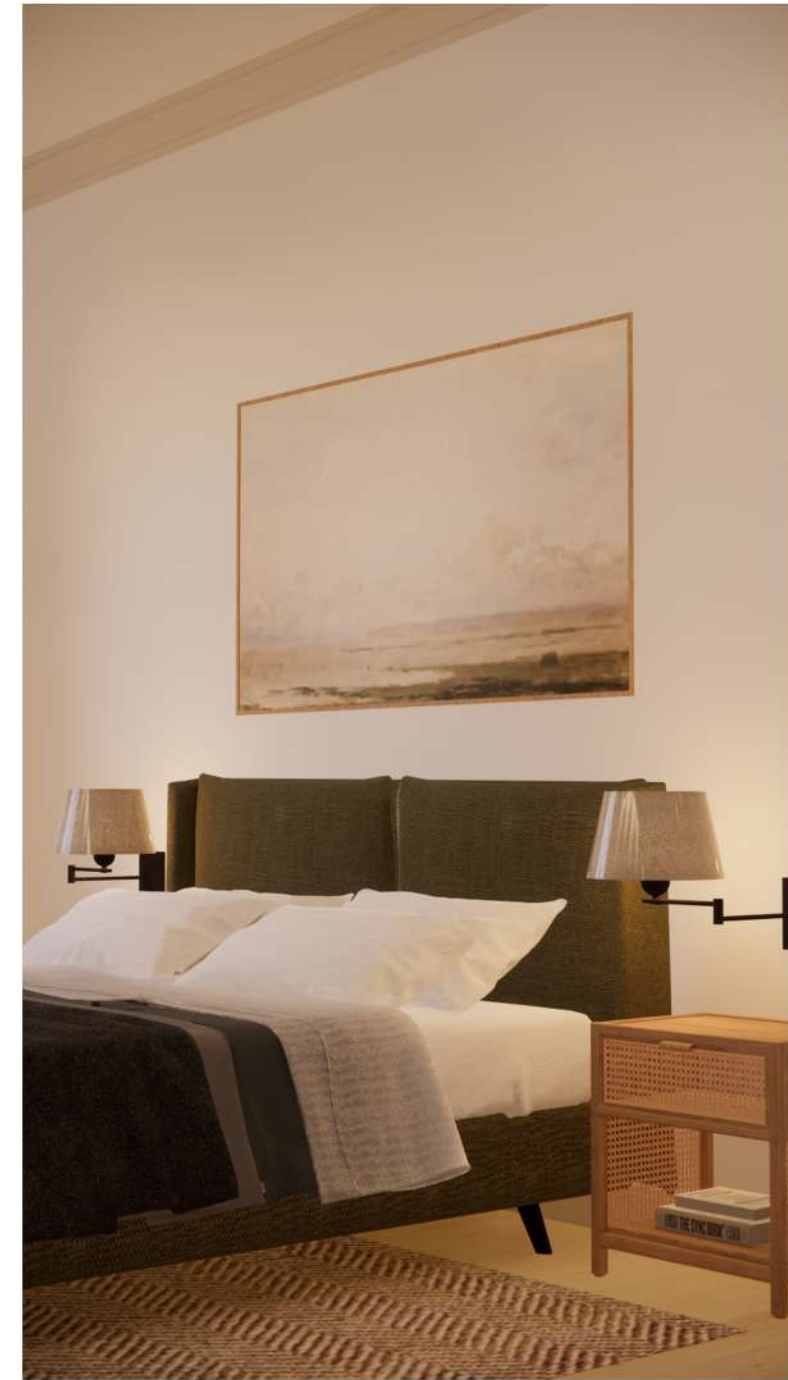


The house also includes a TV room as seen in the perspective above. The room has access to the courtyard through double wooden doors. The TV room also has a built in unit which has bookshelves as well as a study area. The perspective below shows the spacious scullery. Ample storage for appliances and fridges are on the right hand side. The side hosts a double sink, washer and dryer, dishwasher and bin.





The house has an additional flatlet with access to the main house through the courtyard. The flatlet has a small single wall kitchen and small living space with a sofa bed, built in cupboards and an en suite. The view above shows the bed details.



The guest bedrooms are designed to host guests in the main house, the design is minimal and neat but keeping in the English style of the home. The house has two guest bedrooms both with a small en suite attached.



The main bedroom, walk in closet and en suite are the highlights of the build. The bedroom has a beautiful watercolour wallpaper from Cara Saven, a king sized bed with a custom built headboard. The walk in closet is made with natural timber and glass, giving it a warm and friendly feeling. The en suite has wall paneling to tie in the English design and beautiful terracotta tiles. The bathroom is soft and inviting with beautiful wall sconces and gold accents throughout.



2. PG BISON - NATIONAL COMPETITION

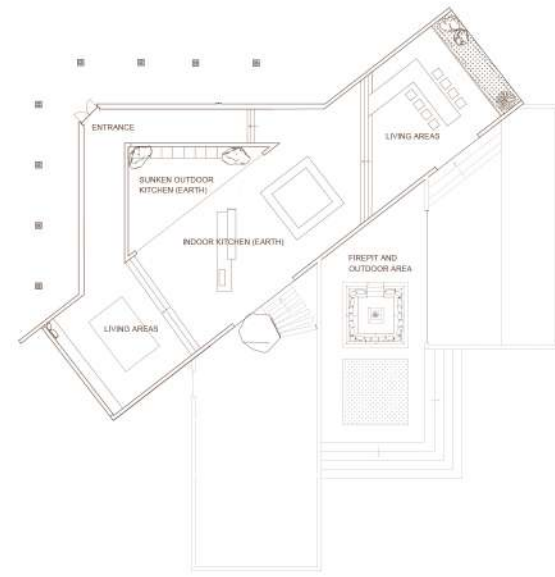
Introducing the Aardvark Retreat, an architectural wonder nestled in the Karoo desert, inspired by the elusive Aardvark's lifestyle. Half-submerged underground, the building mirrors the Aardvark's burrowing behavior, immersing visitors in the desert's essence. At night, the building comes alive, emulating the creature's nocturnal activity with subtle lighting, creating an enchanting nocturnal haven

The Aardvark Retreat invites guests to connect with nature, fostering a deep appreciation for the Karoo's beauty. This extraordinary architectural masterpiece beckons adventurers and nature enthusiasts to embrace the magic of the Karoo, uncover the secrets of the night, and find solace in the embrace of the Aardvark-inspired retreat.

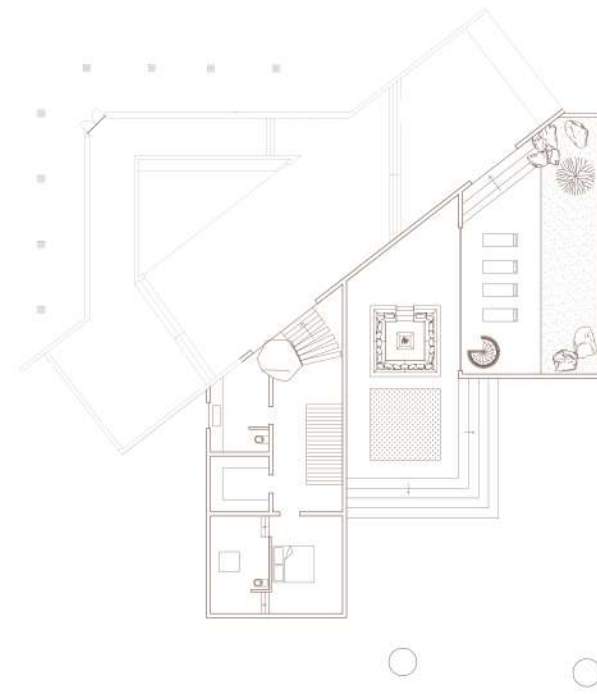
With strong diagonal lines, the structure elegantly showcases the Aardvark's zigzagging movements through the desert, blending seamlessly with the landscape. The bedrooms are designed as underground pods, offering guests an intimate experience of the Aardvark's lifestyle, complete with small skylights that replicate the view from underground burrows. Sustainability remains paramount, with eco-friendly materials and low-impact construction techniques to preserve the delicate desert ecosystem.

The Aardvark Retreat beckons adventurers, nature enthusiasts, and those seeking a truly unique experience to embark on a journey that celebrates the enigmatic Aardvark and its desert home. Immerse yourself in the magic of the Karoo, discover the secrets of the night, and find solace within the embrace of this extraordinary architectural masterpiece

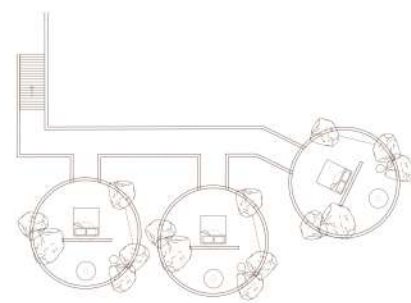




PG BISON GROUND FLOOR PLAN  
SCALE: NTS



PG BISON - 1 FLOOR PLAN  
SCALE: NTS



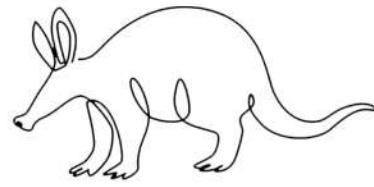
PG BISON - 2 FLOOR PLAN  
SCALE: NTS



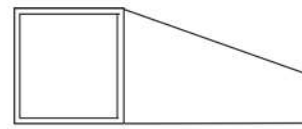




DIAGONAL LINES TO REPRESENT THE WAY THE ARMADILLO MOVES



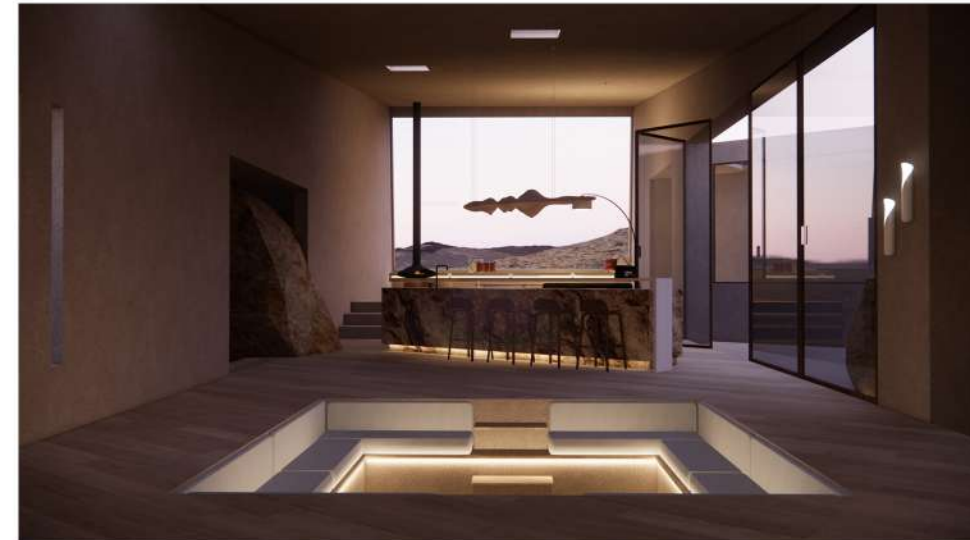
THE ARMADILLO:  
NIGHT SCENES TO REPRESENT THE NOCTURNAL ANIMAL



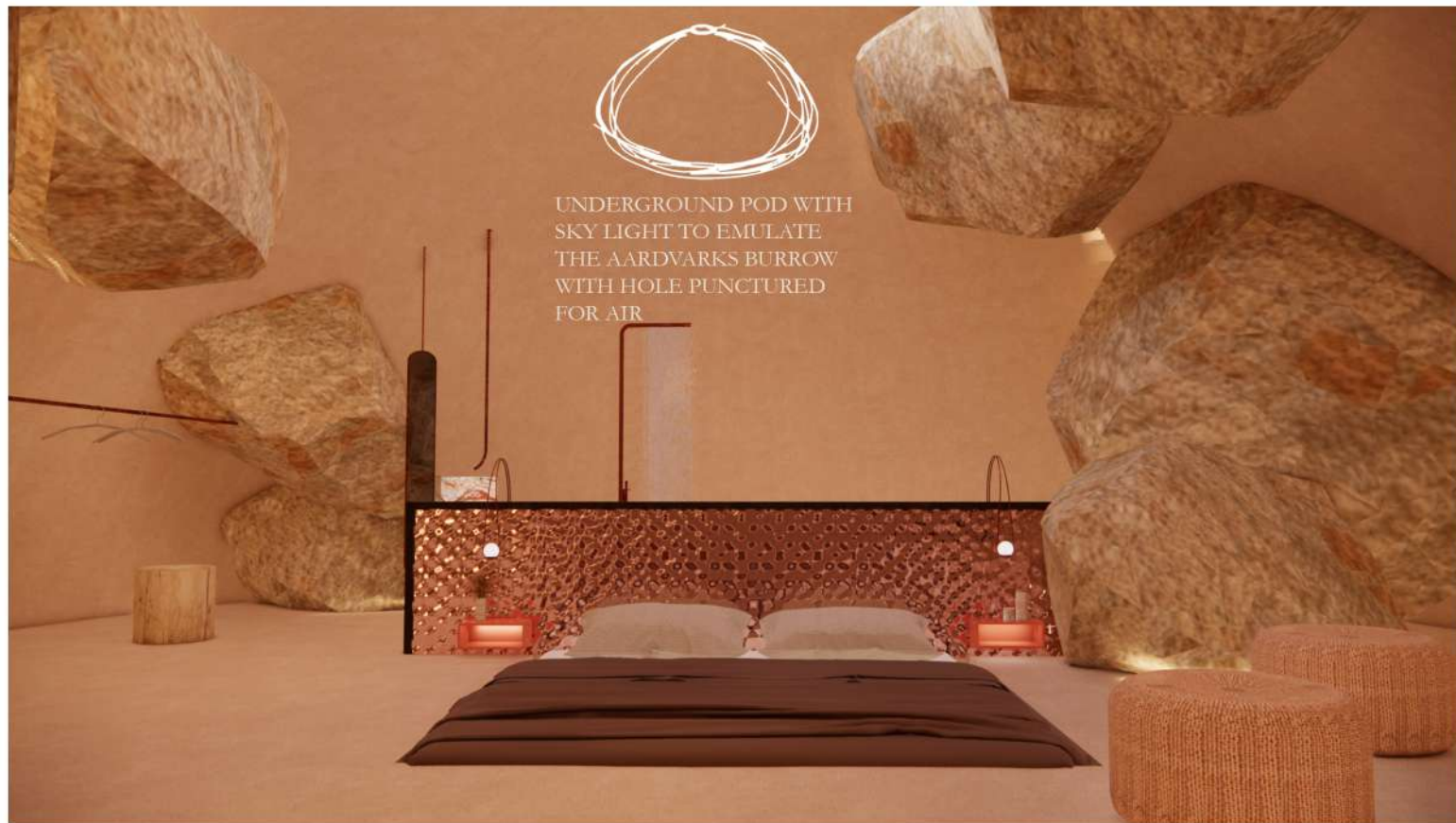
STRUCTURE REPRESENTING THE BURROW OF THE



The concept behind the build is to emulate the life and home of the armadillo, the interior design theme is neutral with minimal furniture throughout. The building has been pierced with square windows allowing shards of light through, this represents the way the armadillo burrows, leaving a hole for air to enter the hole. The building is also partially submerged in the earth, copying the armadillo, this also is a technique used in desert architecture to keep the building cool. The dining area shown above represents the air element. With a floating table and white pendants. Behind the dining table there's a water feature bringing in the water element.



The kitchen is designed with the earth element in mind, a stone cladding is used to emulate earth and the kitchen is half indoors and half outdoors. Seating inside has been lowered into the earth creating more relations to the armadillo. The lounge area has views out into the desert. The interior is minimal desert middle eastern inspired with a Persian rug and patterned cushions.



The sleeping pods are found lower down into the earth, the building layout creates a labyrinth for the guests like the burrows of the aardvark. The sleeping pods are based off the fire element, warm coppers and red tones are used. The bed is sunken down into the earth and there's a small skylight above that ties in the aardvark's sleeping burrow again.



The bath area is placed behind the bed. Red marble representing fire is used and copper sanitary is used throughout. Rocks are a feature in the pods adding the natural raw feel of a burrow. LED strips are placed behind the rocks to give them a glowing effect.

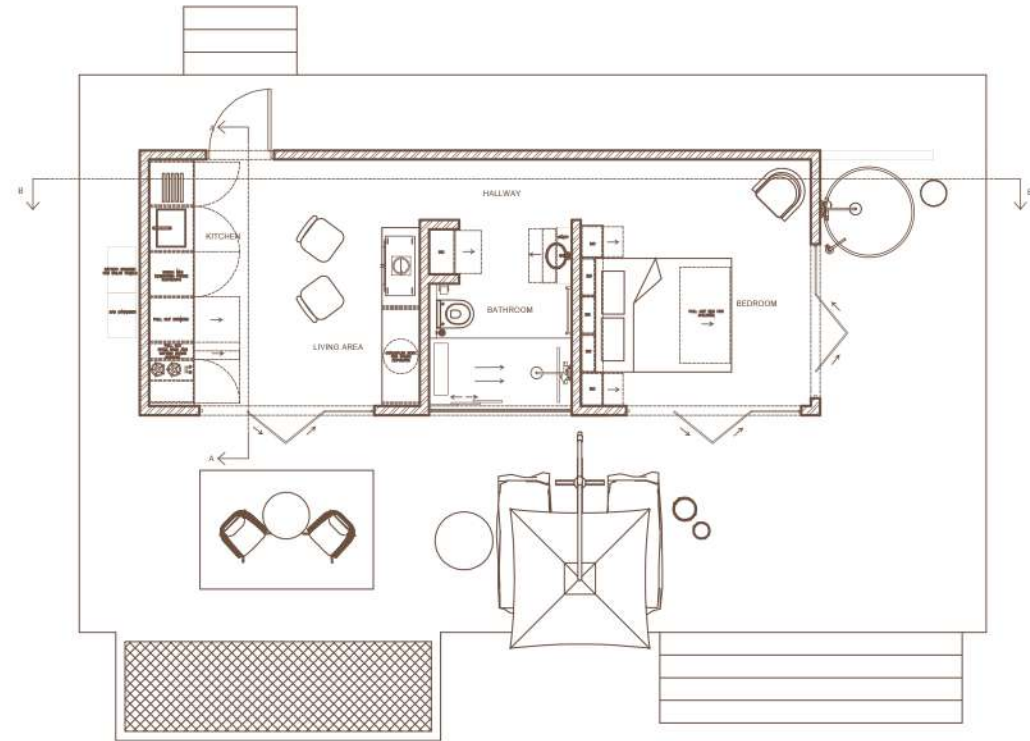


3. STAY UNIQUE - COMMERCIAL  
TEAM PROJECT - 3RD PLACE

brief: design a unique and innovative cabin design for Stay Unique. The company plans to build six cabins in 2023, each situated in distinct and picturesque locations within 2,5h radius of Cape Town. As the company looks to expand into other provinces beyond Western Cape in 2024, they are seeking inspiration for its next four cabins.

In collaboration with Stay Unique, our goal is to create an exceptional haven of tranquility and relaxation. Drawing inspiration from the breathtaking dune landscapes along the coasts of South Africa, we seek to forge a profound connection between our guests and the natural beauty of the ocean. To evoke a sense of serenity, we have meticulously curated a soft colour palette that harmonizes with the distinctive brand identity of Stay Unique, enticing guests to embark on a journey of unparalleled calmness and rejuvenation. Nestled against the awe-inspiring backdrop of De Mond nature reserve, which graces the vicinity near Struis Bay and Arniston. Our retreat promises an immersive escape amidst the untamed beauty of the surroundings





STAY UNIQUE FLOOR PLAN  
SCALE: NTS





The cabin's colour palette matches the beautiful rolling dunes of the surroundings. Keeping it neutral with pops of green. The layout is open and airy with easy access to each section and minimal doors creating a sense of freedom and openness. Views are available in every area through either glass paneled windows or glass sliding doors that open out onto the deck. The ocean can be seen in the distance creating a serene calming experience for the guests.

BEDROOM



1. Lapa rug | Ivory | Hertex 2. Louvre | occasional chair | cielo 3. Custom made bed 4. Olivia | swiveled light | brushed brass | lighting.co.za 5. Dunes art work | knus 6. Basket light | Lighting.co.za

KITCHEN AND LIVING



1. Custom made chair 2. Daze | Round Rug | Natural | Hertex 3. Fireplace accessories | Pedersen and Lennard 4. Charnwood C Eight | Almond | GC fires 5. Meir | Single Lever Tap | Tiger Bronze | Flush 6. Wooden boards 7. Kitchen rail with hooks | Brass | Douglass and Douglass 8. Basket Pendant |

BATHROOM



1. Meir | single lever tap | tiger bronze | Flush 2. Sandstone basin | Persian Tiles 3. Stay Unique | Hand soap 4. Brass | LED back-lit mirror | knus 5. Silo | Bench | Coricraft 6. Brass | Heated towel rail | Flush 7. Meir | Shower rail set | Tiger bronze | Flush 8. Giberit | Actuator flush | White | Flush 9. Sibio | Wall hung toilet | Flush

PATIO



1. Luciana | Patio dining chair | Cielo 2. Ryka Square | Outdoor light | White | Lighting.co.za 3. Intersect | Outdoor rug | Vapour | Hertex 4. Marrakesh | Outdoor Bistro Table | MKHUBA 5. Single Patio Lounger | Sunny Spot 6. Weaved baskets | knus 7. Martini Stool | Weylandts 8. Contilever Umbrella | Beige | Cielo 9. Brass | Outdoor Shower | John Brass





The bedroom and en suite both give a calm and relaxed feeling, a beautiful built in unit around the bed allows for generous amount of storage for guests, with pockets for bedside tables that are lit up with LED strips. The bed is a queen sized bed with fresh white linen and a built in roll out single bed to allow for small children to stay. The en suite hosts a built in cupboard for towels and toiletries, a vanity with ample storage, a large shower with views of the ocean and a toilet. The bathroom also has beautiful cream shutters which allow privacy when using.



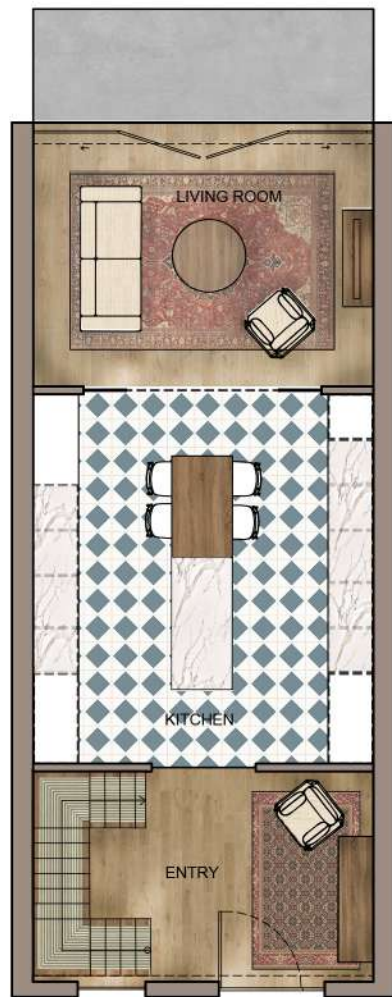
The living spaces are soft and inviting to the guests. The living room has a warm white fireplace from GC Fires and cosy armchairs in a moss green. The cupboard has pocket doors revealing a built in games and study section for guests. The kitchen offers the essentials to a holiday away. With two cook plates, a mini fridge, and lots of storage, fully equipped. The table swings out from the counter which is a great space saver for when you aren't using it.

4. BOXED - RESIDENTIAL

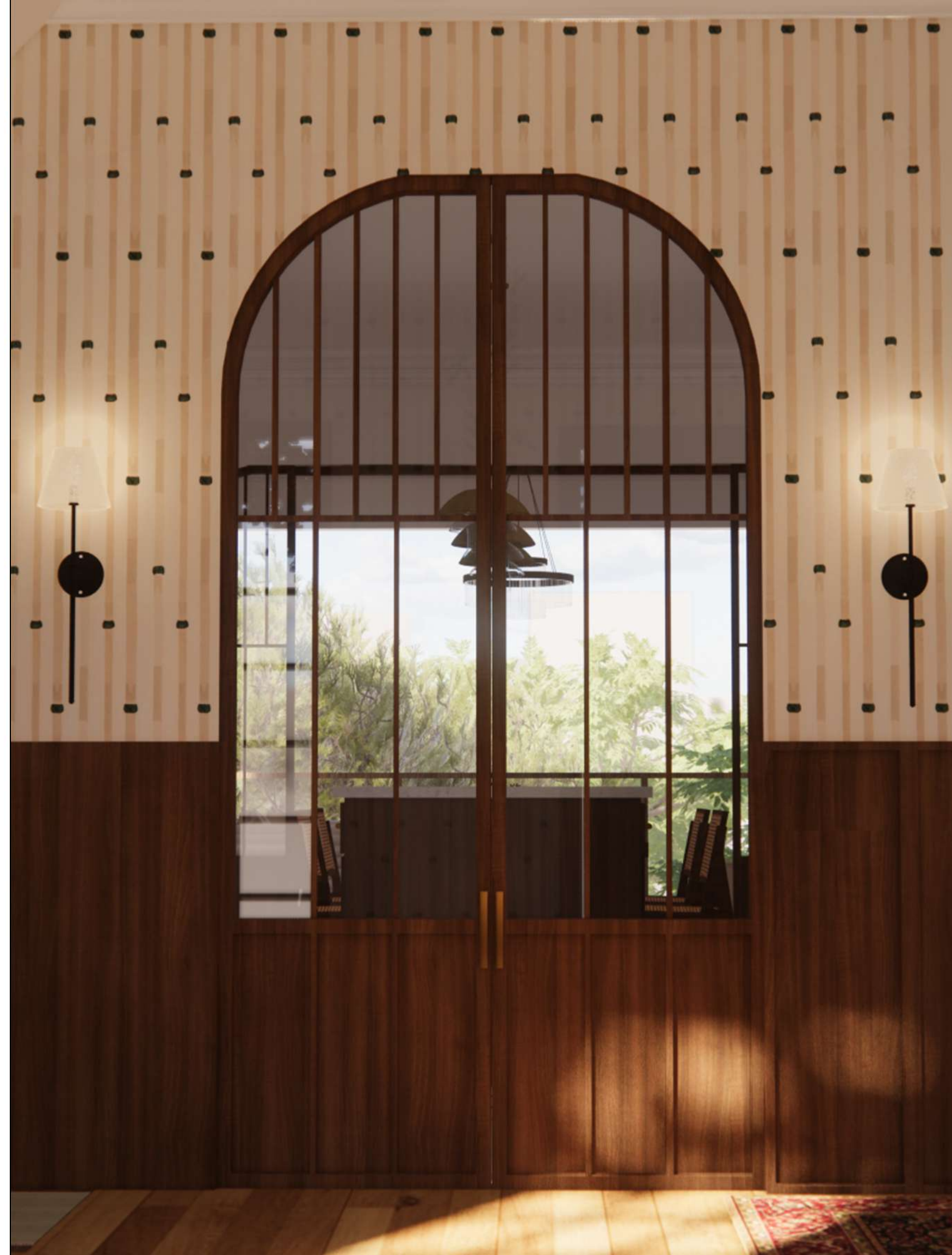
brief: Choose a site in the Cape Town City bowl. You can chose from the following: Bo Kaap, Cape Town Central, De Waterkant, Devils Peak, Foreshore, Gardens, Higgovale, Kloof Nek, Oranjezicht, Salt River, Tamboerskloof, University Estate, V&A Waterfront, Vredehoek, Walmer Estate, Woodstock or Zonnebloem. You have the option to position your building between two existing buildings or you can demolish an existing structure to make space for your building on a specific site. The property is characterized by its elongated and narrow shape, with its entrance located at the shorter end facing the street. Please specify your chosen address on your submission.

Nestled within the charming neighborhood of Gardens in Cape Town, House C exudes an inviting ambiance with its traditional English country interior. As you step through its doors, you're transported to a world of timeless elegance and cozy comfort. The walls adorned with intricate wall moldings harken back to a bygone era, adding a touch of sophistication to the space. Delicate floral-patterned wallpapers adorn the walls, infusing each room with a sense of natural beauty and warmth. The interior seamlessly marries classic design elements with modern functionality, creating a space that feels both refined and livable. House C stands as a captivating testament to the enduring allure of traditional English country aesthetics, offering a haven of tranquility and style in the heart of Cape Town's vibrant Gardens district.





↑  
BOXED  
GROUND FLOOR PLAN  
SCALE: NTS



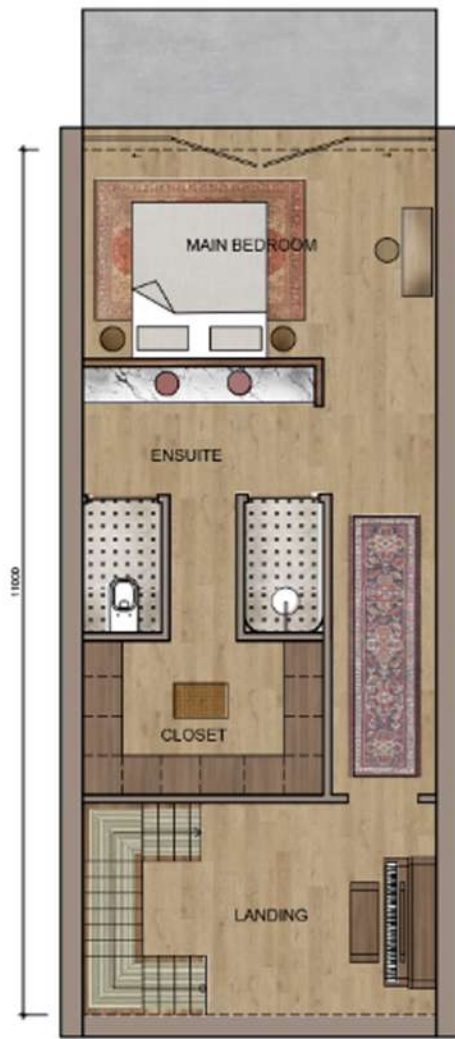


The living spaces are located on the ground floor of the building, the kitchen has an English style layout and design with checkered floors and moulding used throughout. The divider to the lounge is open and airy allowing natural light and ventilation into the kitchen. The island has a built in dining table attached to it, saving on space and keeping the place looking complete.



The kitchen has red moulding on the cabinets, giving the design a pop of colour against the white. The extractor fan has been set within a brass built in unit. Rattan has been used in the detailing of the dining table and the chairs. The right hand side of the kitchen has timber cabinets with white moulding, this is in contrast with the opposite side. The lounge is soft and warm with its tones, leaf wallpaper adds texture to the room and a Persian rug is used to bring in the warmth from underneath.





BOXED  
1ST FLOOR PLAN  
SCALE: NTS





The master bedroom and en suite are located on the first floor of the building, with views overlooking Cape Town. The design incorporates patterns, rattan, natural timber and a bit of colour. The bed has a variety of colourful cushions adding a bit of fun to the space. Rattan lampshades cast a soft light and the switch has been built into the headboard, elevating the design. A small dressing table is placed in the room with abundant natural light from the wall to wall doors that are used to access the balcony. The dressing room brings in the rattan with full timber doors with rattan inserts.



The en suite is placed behind the bed, a custom rattan divider is built to differentiate the areas. The shower and toilet are designed adjacent to each other in their own cubicles. There is a hallway to the dressing room in between them. The vanity has two basins and face the view. The paneling has been extended into the bathrooms, as well beautiful tiles used in the shower and toilet. The toilet also has a floral wallpaper bringing back the English design throughout the build.





BOXED  
BASEMENT FLOOR PLAN  
SCALE: NTS





The building also has a basement level which offers a spare bedroom, office, bathroom and access to the small garden. The view above shows the spare bedroom with doors leading to the small garden which has outdoor seating, a small pond as well as lots of lush plants to bring in the nature element.



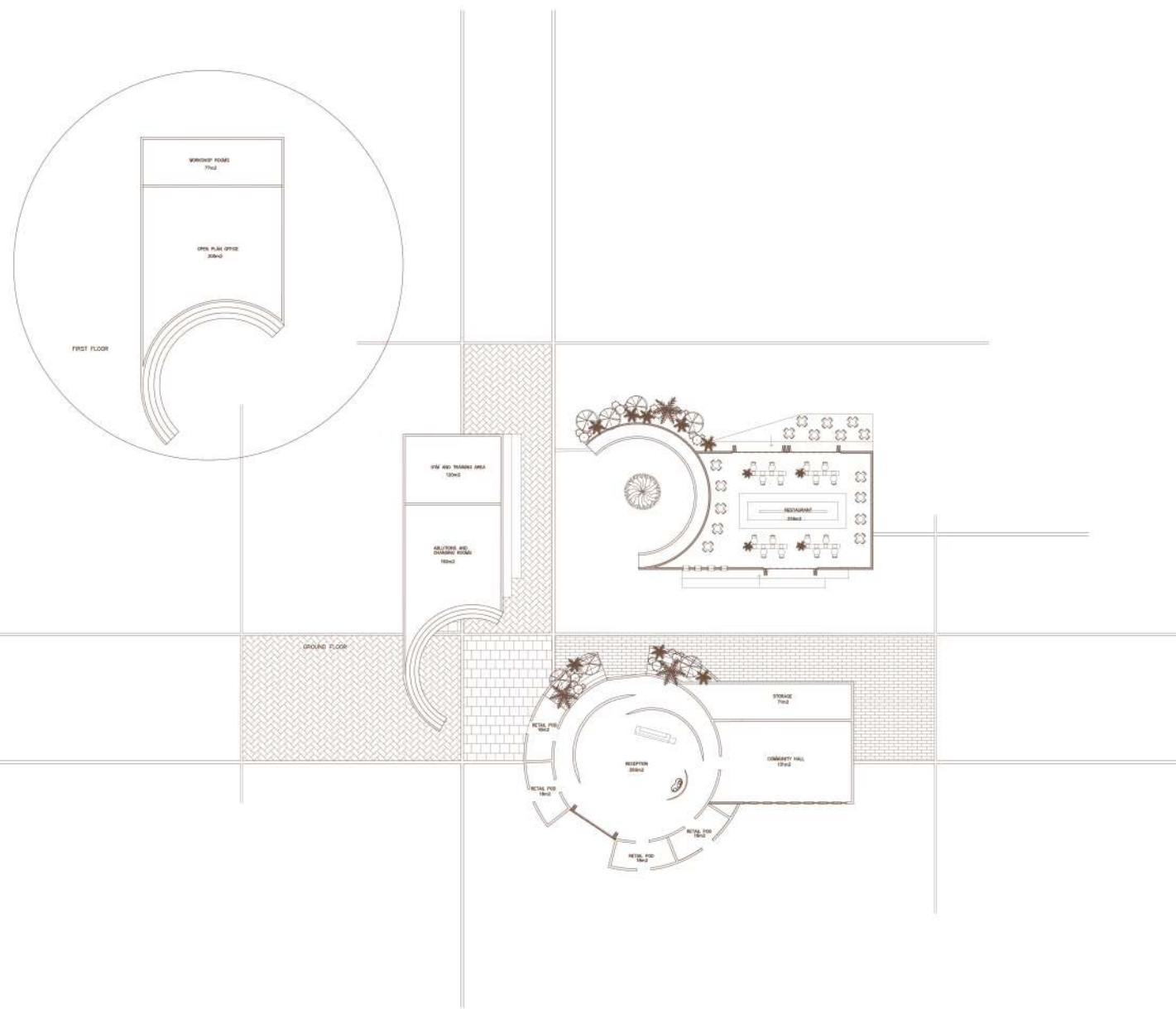
The office is open plan and is accessed off the corridor to the spare room. The design has a lot of timber and darker accents, with beautiful green tiles from Veel Vlak. The garden space is perfect for catering friends and family with a six seater outdoor table and vines and hanging lights creating a vibe.

5. CAESARSTONE - NATIONAL COMPETITION



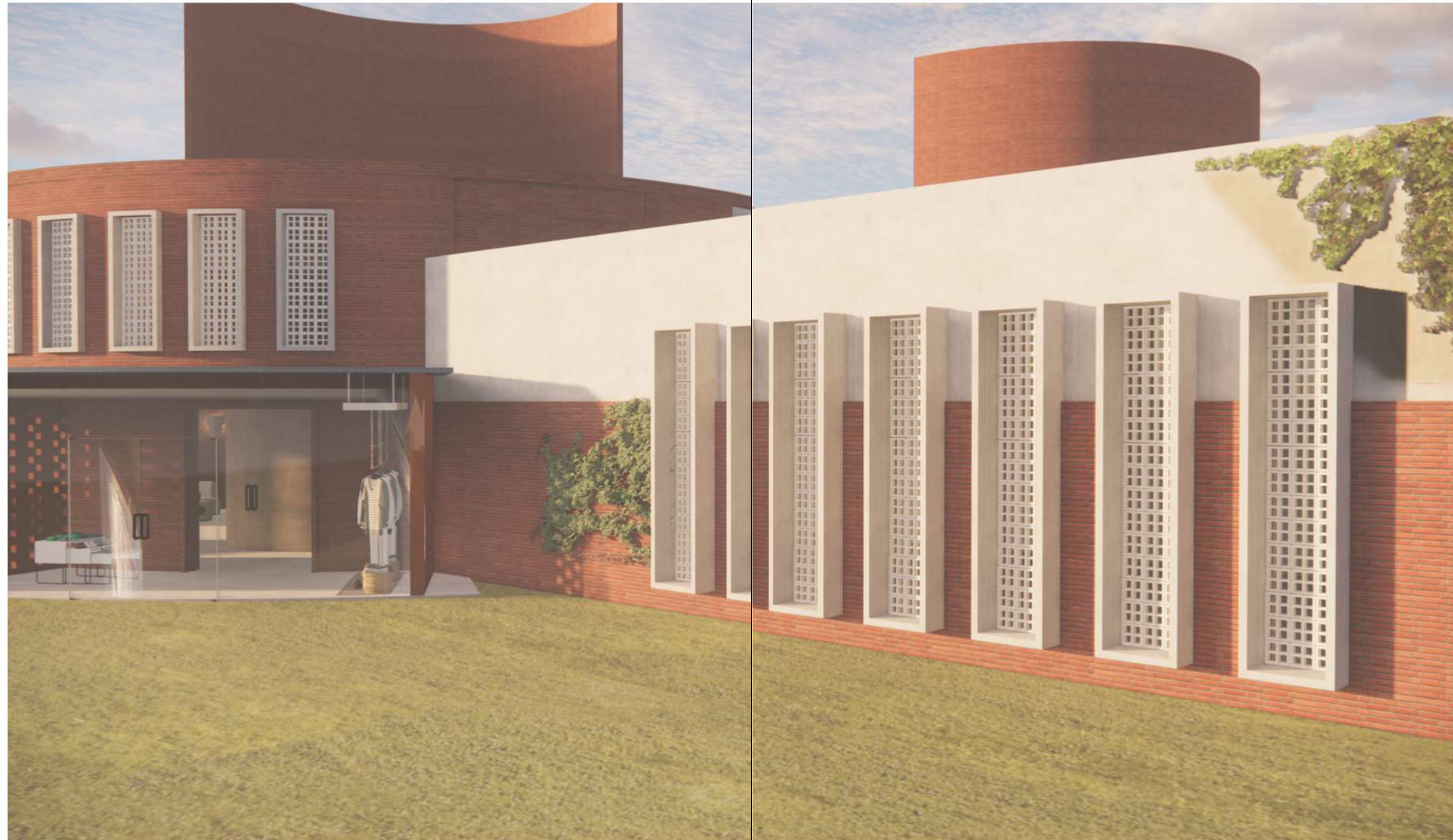
The sports center concept designed for Athlone Nantes Park, intended for use in the 2040 Olympics, has a unique and meaningful design. The concept draws inspiration from the former coal power station, which was the last in Cape Town. The design uses organic shapes and circles to symbolize inclusivity and unity, with circles also representing the Olympic rings. The use of brick is strong in the design, representing the power station, and providing a sense of durability and strength. The center comprises of three buildings, the main building hosts the welcome centre and reception, as well as the community hall that will be available to the community. The second building training facilities and ablutions as well as a second level for meeting rooms and workshop areas. And the third building is the restaurant / food court area. The concept has been thoughtfully crafted, with elements that pay tribute to the history of the area and the struggles faced by the people who live there





CAESARSTONE SITE PLAN  
 SCALE: NTS





The architecture of the sports centre represents the coal power station, use of bricks and white windows and curved walls.

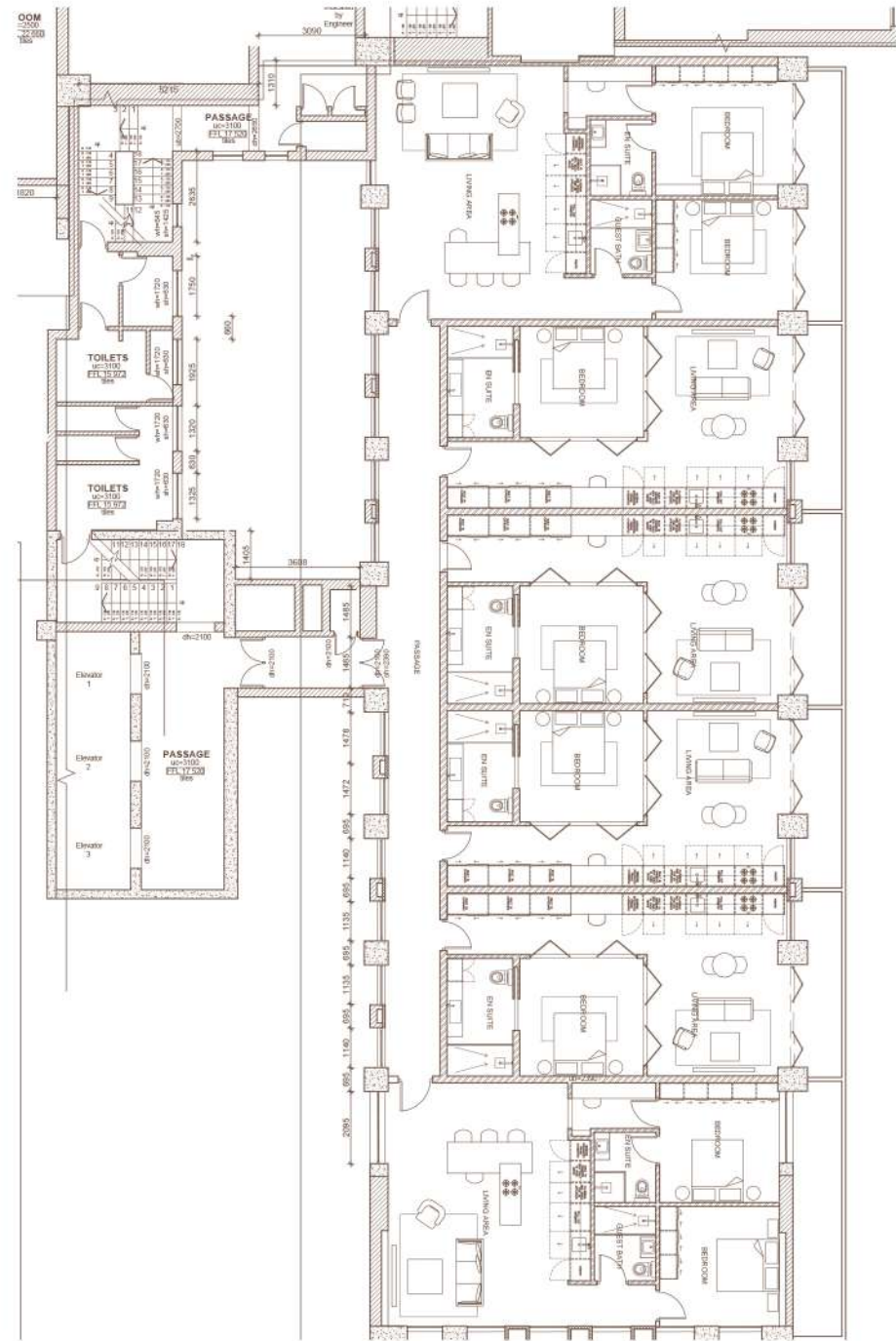
6. BOXWOOD - COMMERCIAL

brief: put together a design scope for the city block fronting Strand, Loop, and Bree Street. This residential conversion, new offices, campus, hotel, etc. The main object is to be creative, quirky and not play it safe. Also include colour.

The Central is a unique and innovative building that combines various facilities and amenities in one convenient location. With its modern design and use of vibrant colors, The Central stands out as a distinctive and contemporary building in any urban setting. It offers comfortable and stylish apartments, as well as a state-of-the-art gym and flexible workspaces to meet the needs of modern professionals. The highlight of the building is its rooftop pool and bar area, which provides a relaxing and enjoyable space for residents to unwind and socialize with friends and neighbours. With its versatile layout and dynamic atmosphere, The Central is an ideal choice for anyone looking for a comfortable and convenient place to live, work and play.







BOXWOOD 9TH FLOOR PLAN  
SCALE: NTS





The client loved vibrant colours, so the central has been designed with blue and orange as the main contrasting colours and with black as the accent colours. The studio apartments have a single wall kitchen that flows into a workspace and storage towards the entrance, an open plan dining and living space with a bedroom that is divided with a black steel and glass wall. The furniture choices are more modern and economical.



The en suite is off the bedroom, the bathrooms colour palette is blue with black accents. There is a vanity, cupboard for storage, a walk in shower and toilet. The design is sleek and modern to fit into the design of the building.



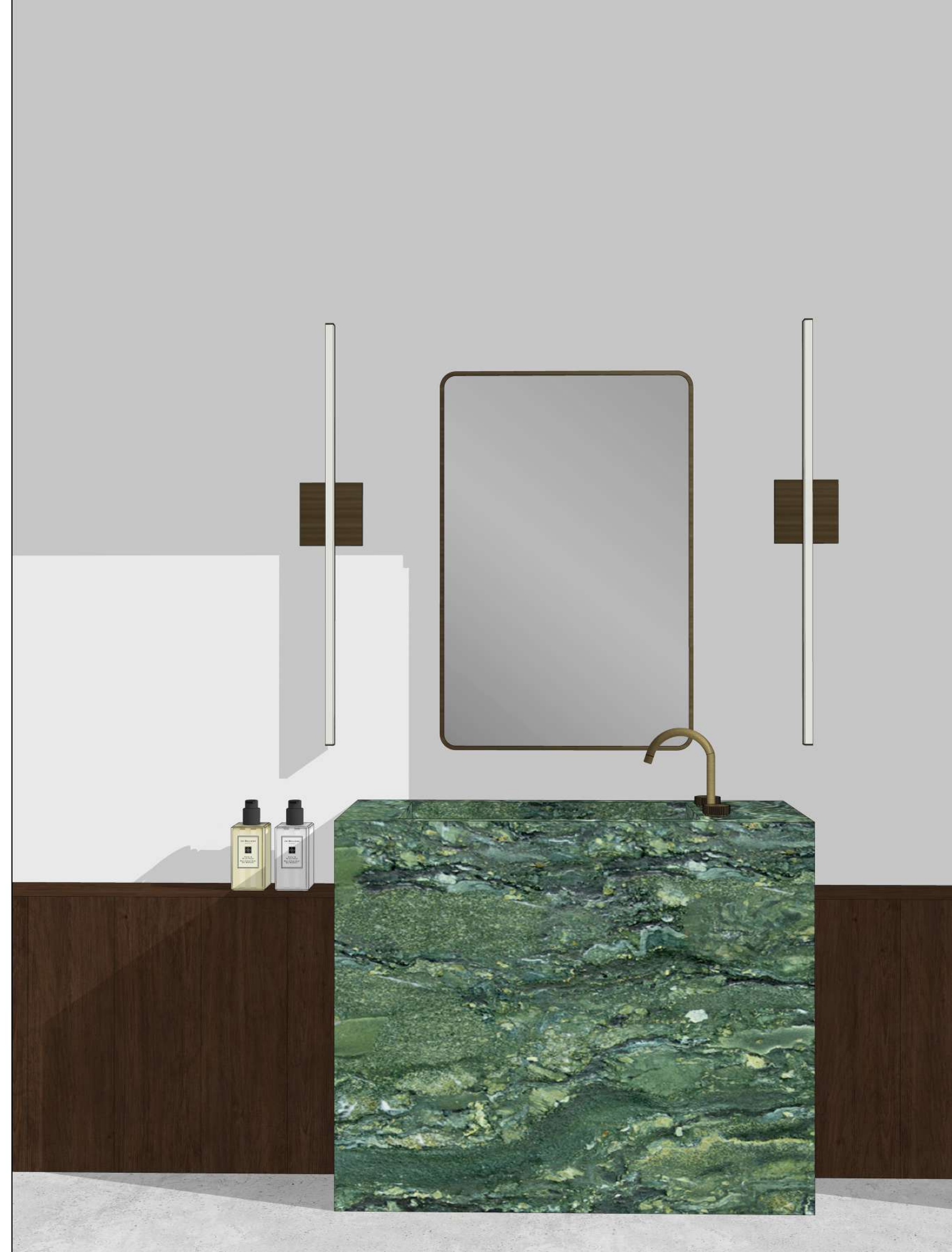
The 2 bedroom apartment speaks a similar language to the studio, with similar furniture and colour scheme. the kitchen is darker with a stone counter top and a blue island for a pop of colour. The living spaces are open plan with the lounge just off the kitchen, wall paneling is used for some texture and interest.

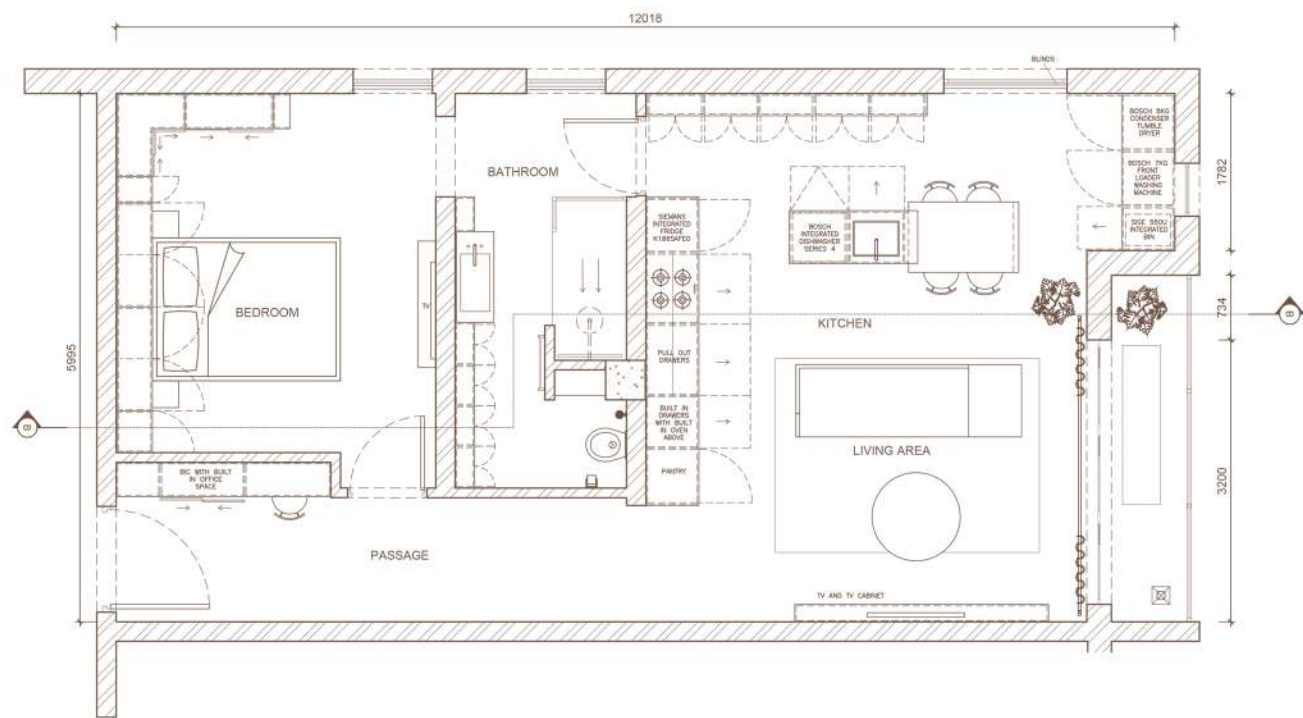
8. ON Q TECHNICALS - RESIDENTIAL

brief: CUBE Developers are looking for 3 beautifully designed and curated 'show apartments' in order for clients to select their chosen model for purchase. Your task is to design ONE of three 'show apartments'. Research the following interior design aesthetics and select one style. This aesthetic will govern your interior scheme broadly and must be carefully considered when designing your kitchen, bathroom, and cabinetry detail.

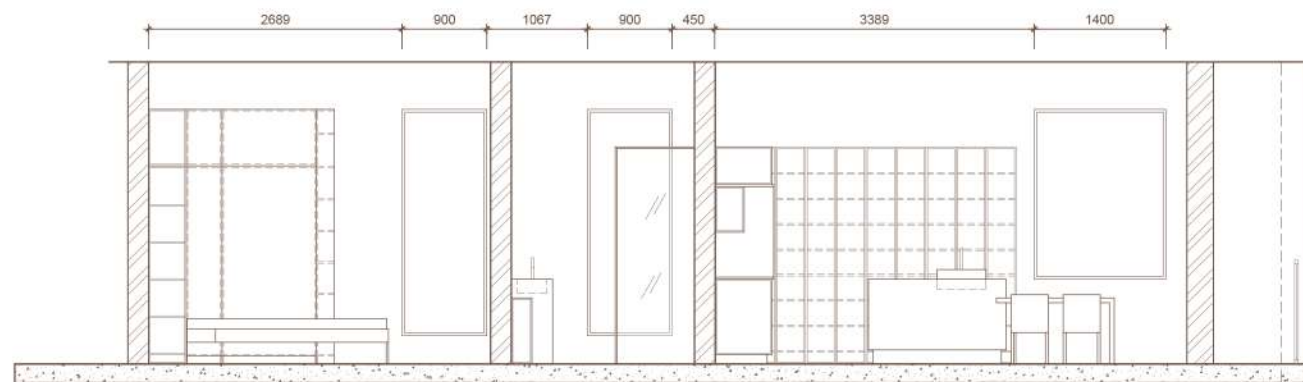
1. CLASSICAL
2. CONTEMPORARY
3. MINIMALIST

The envisioned contemporary apartment design harmoniously blends sophistication and comfort through a seamless fusion of soft hues, timber elements, luxurious marble, and opulent gold accents. Soft, muted colors create a serene ambiance, while the integration of natural timber textures infuses warmth and earthy elegance into the space. The subtle yet lavish incorporation of gold accents adds a touch of refinement, elevating the overall aesthetic. The strategic use of marble surfaces not only exudes timeless luxury but also enhances the sense of modernity. This design concept seeks to create a space where modernity meets tranquility, offering residents a haven of stylish serenity amidst the bustling urban landscape.





ON Q FLOOR PLAN  
SCALE: NTS



ON Q ELEVATION BB  
SCALE: NTS





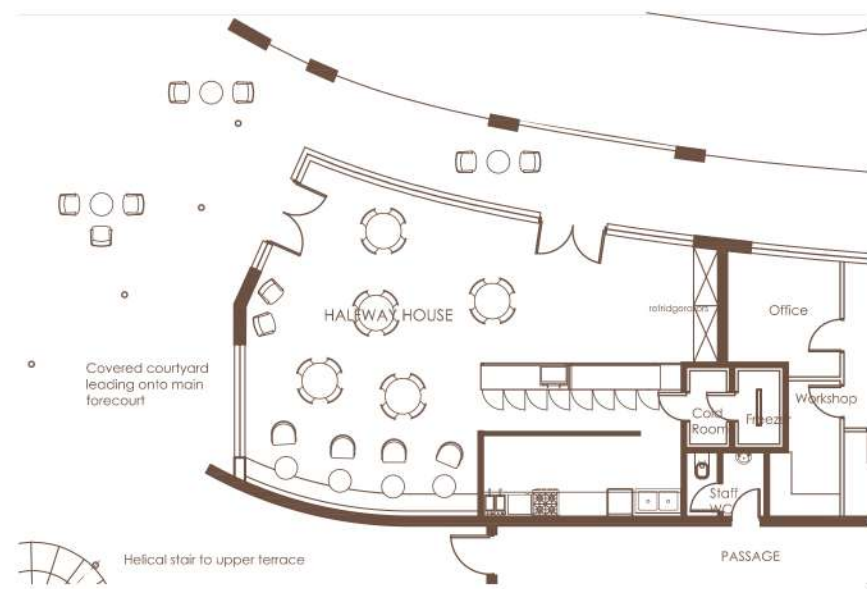
9. WESTLAKE GOLF CLUB - COMMERCIAL



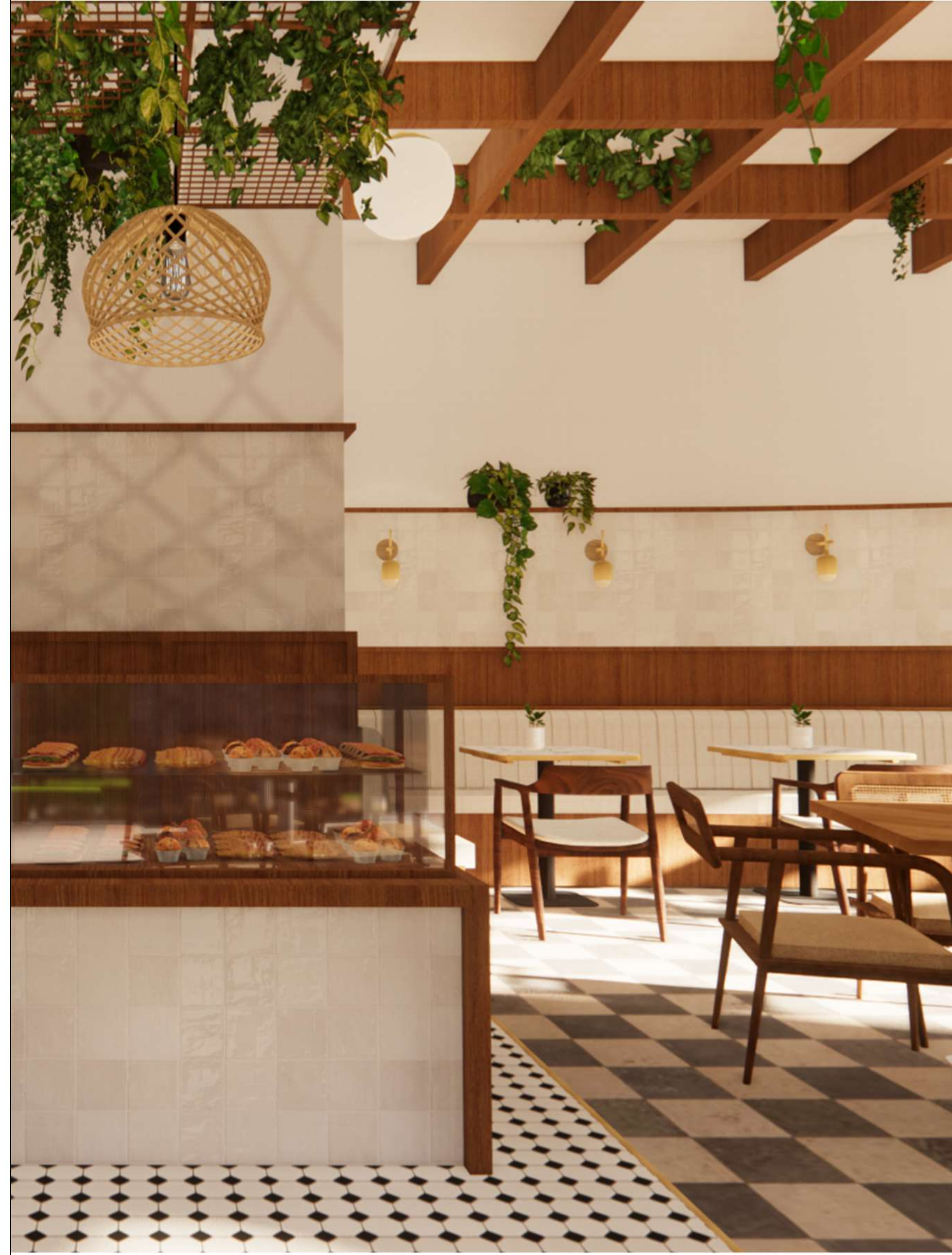
brief: Luxury hospitality brand, and developers TINTSWALO, have appointed Architect Neal Sachs, to redesign the existing Westlake Golf Clubhouse. Together, Tintswalo, and Zuckerman Sachs have appointed and gifted YOU, the designer, the freedom to re imagine, design and curate the interior of this exciting, NEW and REAL space, bringing an original design aesthetic to the table.

Westlake Golf Club, the design strikes a balance between classic golf club vibes and a trendy, fresh atmosphere. The halfway house is a bright, green space with hanging plants, inviting golfers to relax. Meanwhile, the changing rooms go for a more traditional look, featuring wall paneling and tiled accents. This mix of old-school charm and modern elements creates a welcoming haven for golf lovers, offering a blend of tradition and contemporary style.





WESTLAKE HALFWAY HOUSE FLOOR PLAN  
SCALE: NTS

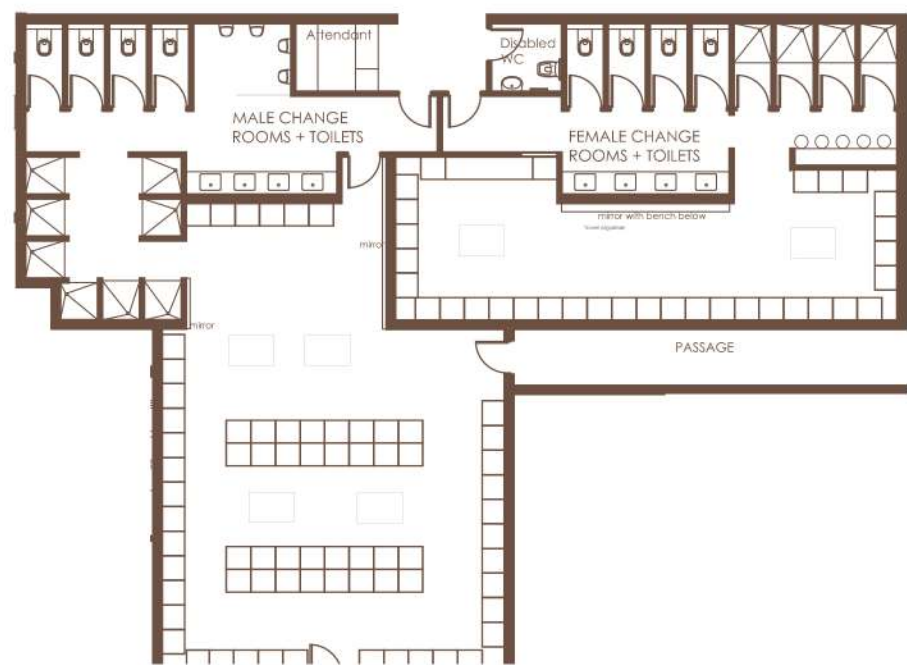




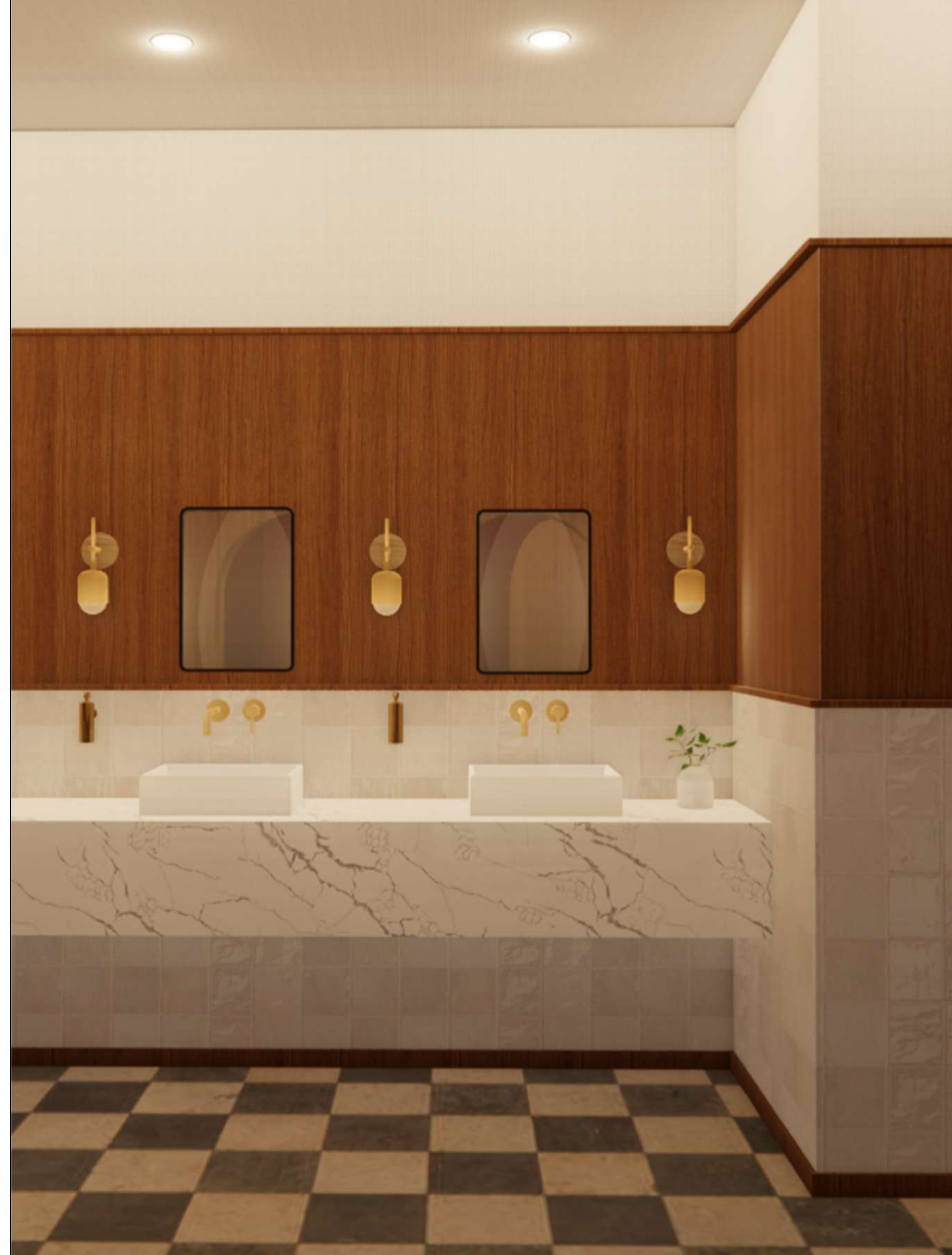
The halfway house is fresh and open for members. Located below the main clubhouse, the halfway house gives members the option to grab a snack while on the course. Lots of timber is used and checkered tiles give the area a fresh communal feel.



Above shows sketch up views of the project as this was a first year project.



WESTLAKE CHANGING ROOMS FLOOR PLAN  
SCALE: NTS





The clubhouse design also includes changing rooms for the members. Black and white patterned tiles are used for a sleek feel, while the white wall tiles and timber wall cladding gives the classic golf club feel.

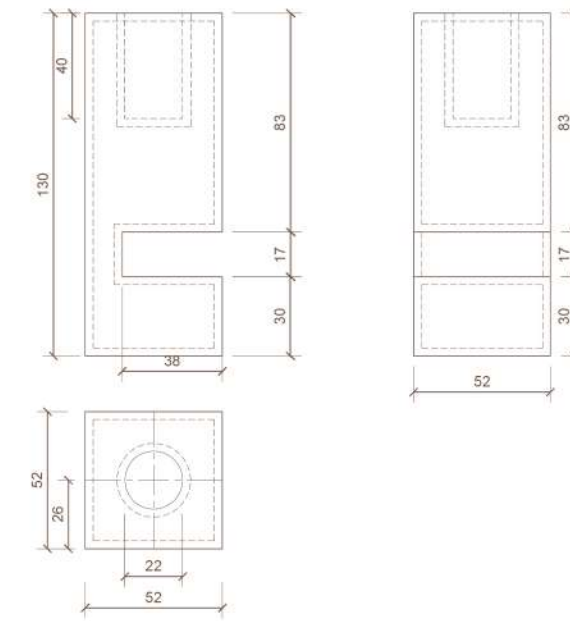


The womens and mens changing rooms have a similar layout and same sanitary finishes, however the colour scheme changes, the mens has a beautiful green tile whereas the womens has a cream square tile. A lighter timber is used for the lockers to keep the small room feeling more open.

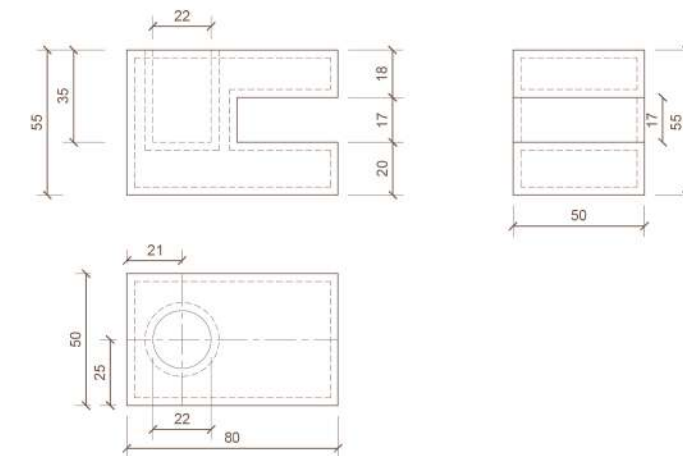




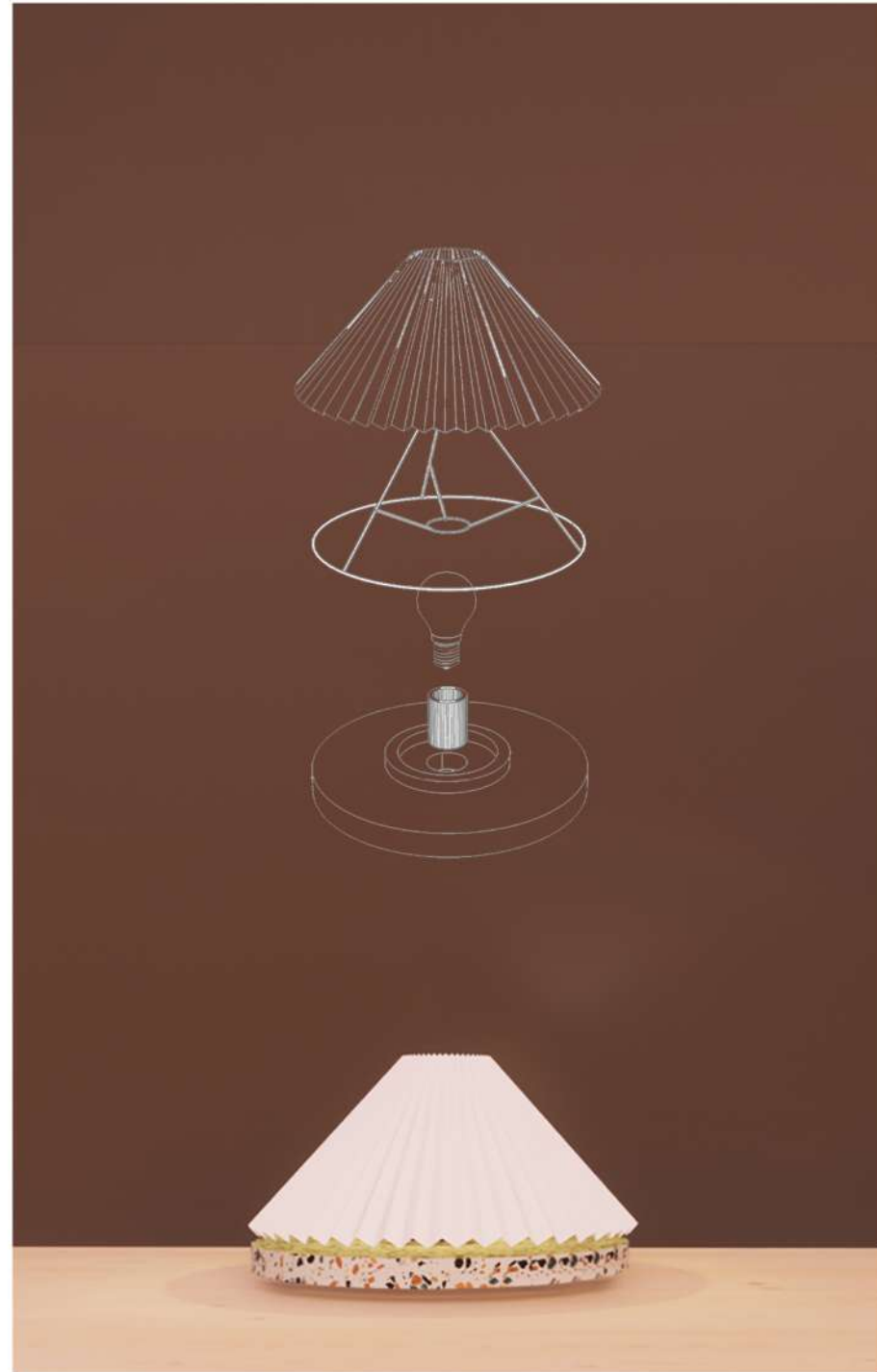
The Perspex candle holder design embodies both elegance and functionality. Crafted with precision, it features a sleek, transparent body that exudes a modern aesthetic. The candlestick has a slot incorporated on the side, perfectly sized to snugly accommodate a standard matchbox. This addition transforms the candle holder into a versatile multitasker, ensuring you always have a convenient and stylish way to store your matches. The collection includes two variations: one short, offering a minimalist charm, and one tall, providing a striking centerpiece for any setting.



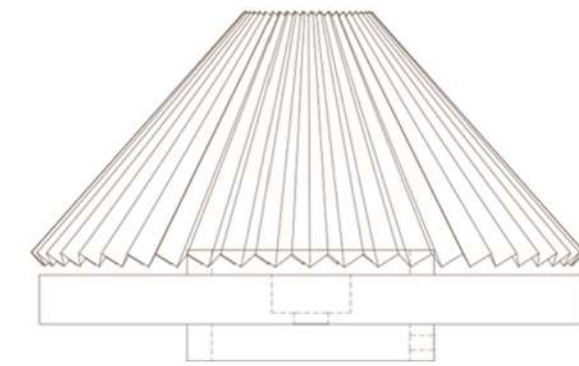
TALL CANDLESTICK PLANS AND ELEVATIONS  
SCALE: NTS



SHORT CANDLESTICK PLANS AND ELEVATIONS  
SCALE: NTS



Introducing the Gerel Lamp, a fusion of tradition and modernity inspired by the iconic Mongolian yurt. Gerel is the homo phonic word for light in Mongolian. Its unique design features a fluted shade that not only diffuses light softly but also adds a touch of texture reminiscent of traditional yurt patterns. The circular base, reminiscent of the yurt's structure, is crafted from sustainable terrazzo embedded with recycled tiles, paying homage to the environment while honoring heritage.



COMPLETE LAMP ELEVATION  
SCALE: NTS



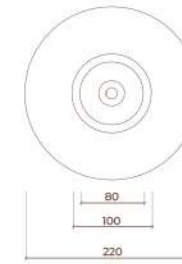
SHADE ELEVATION  
SCALE: NTS



SHADE PLAN  
SCALE: NTS



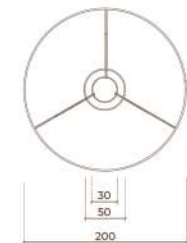
BASE ELEVATION  
SCALE: NTS



BASE PLAN  
SCALE: NTS



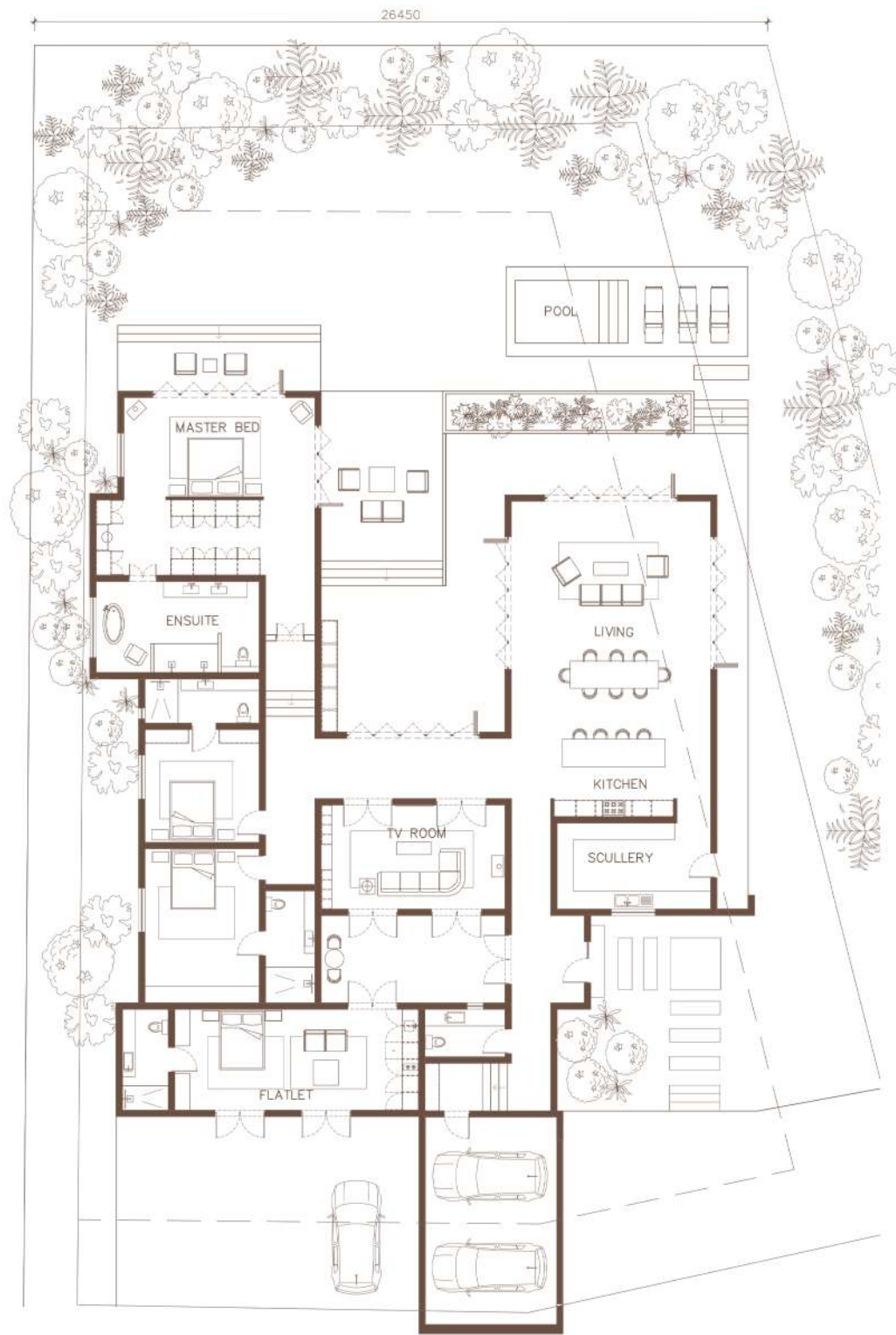
WIRE FRAME ELEVATION  
SCALE: NTS



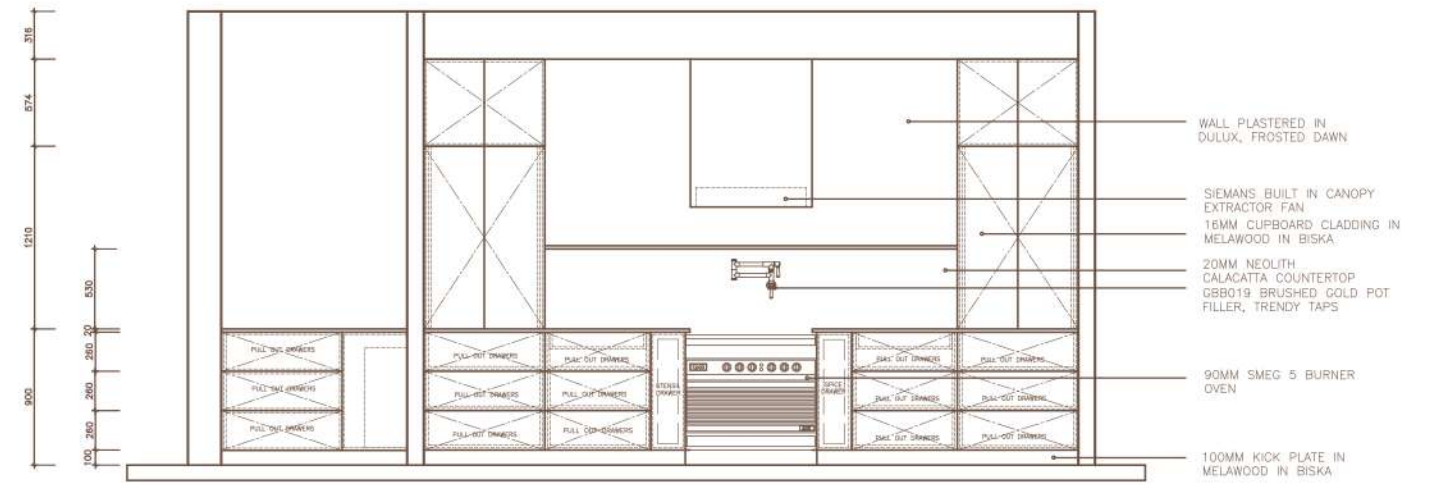
WIRE FRAME PLAN  
SCALE: NTS



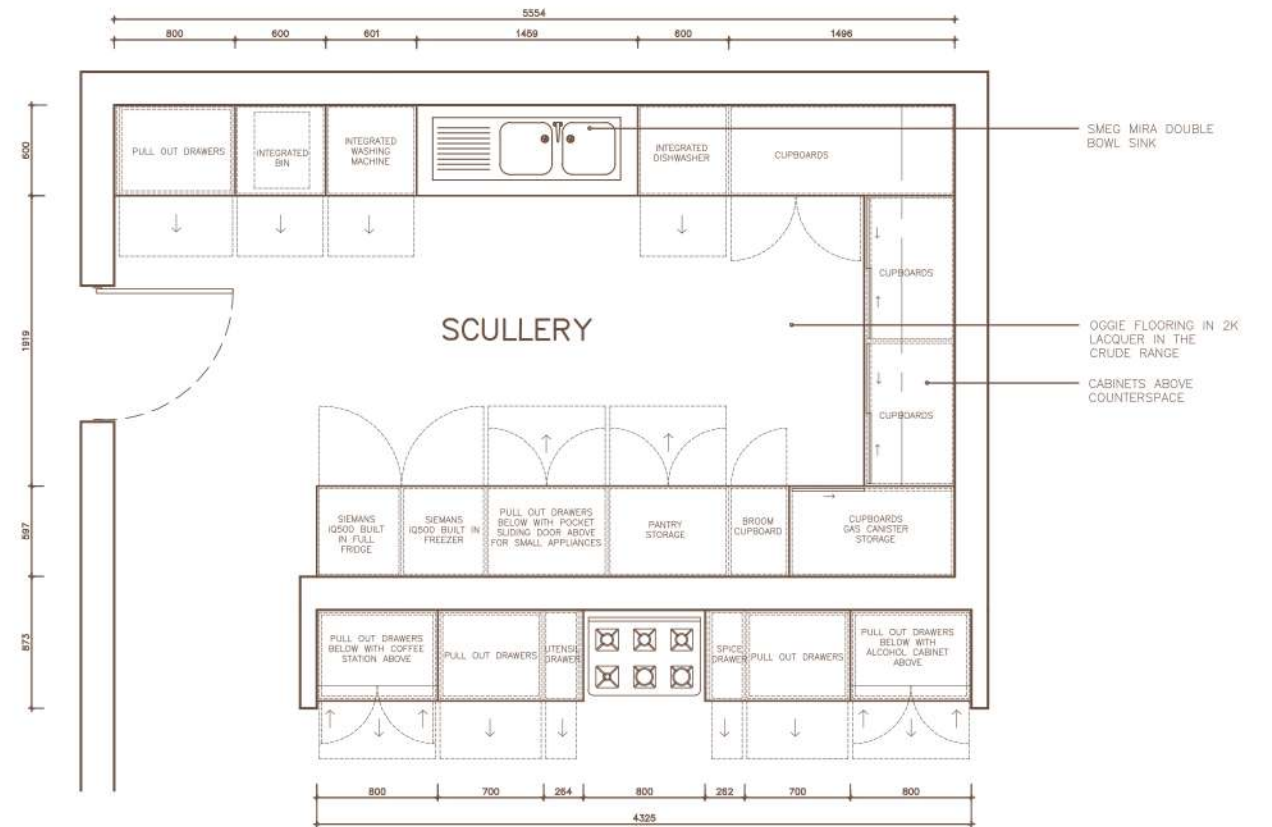




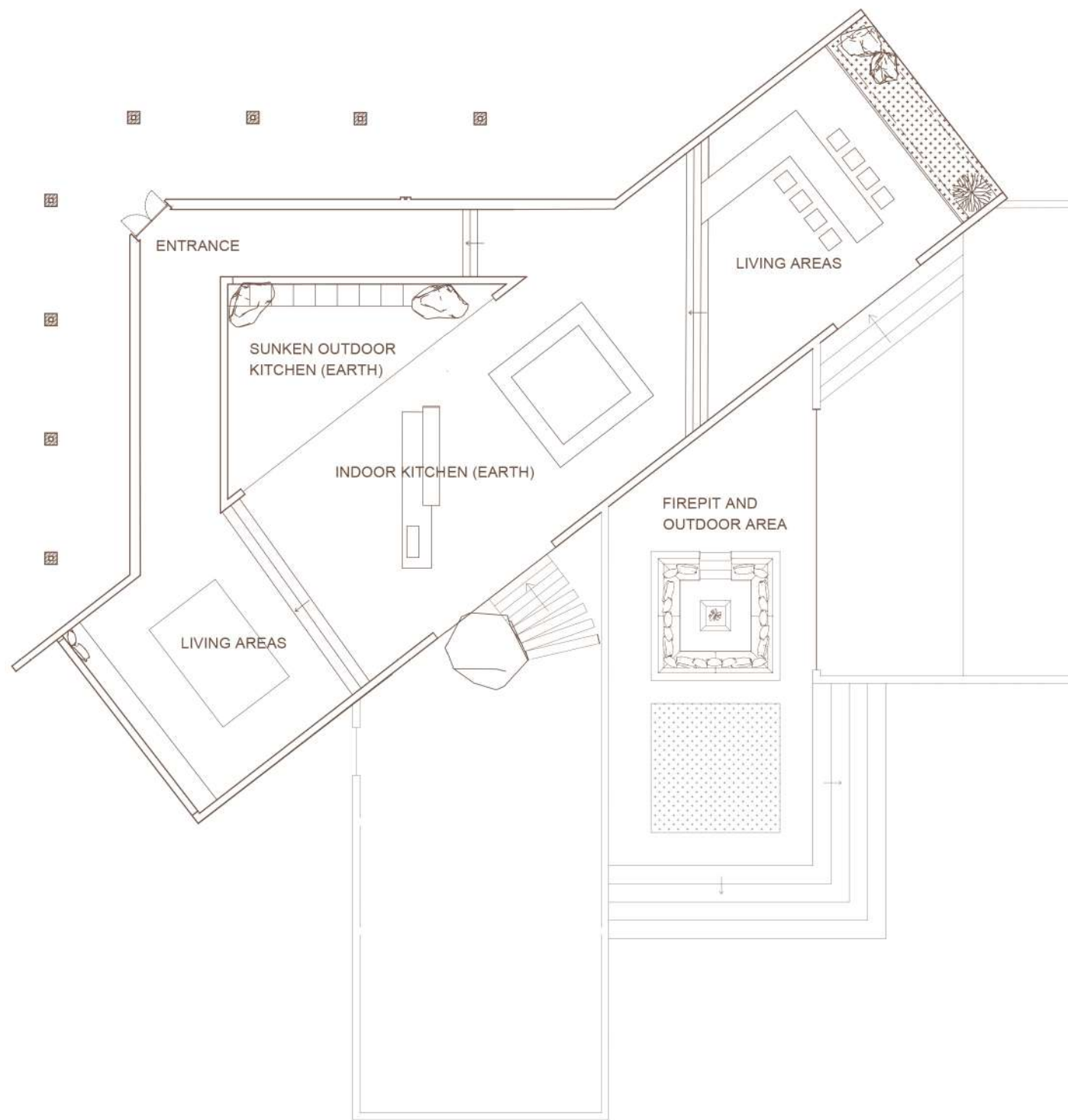
FERNWOOD PLAN  
SCALE: NTS



KITCHEN DETAIL ELEVATION  
SCALE: 1:50

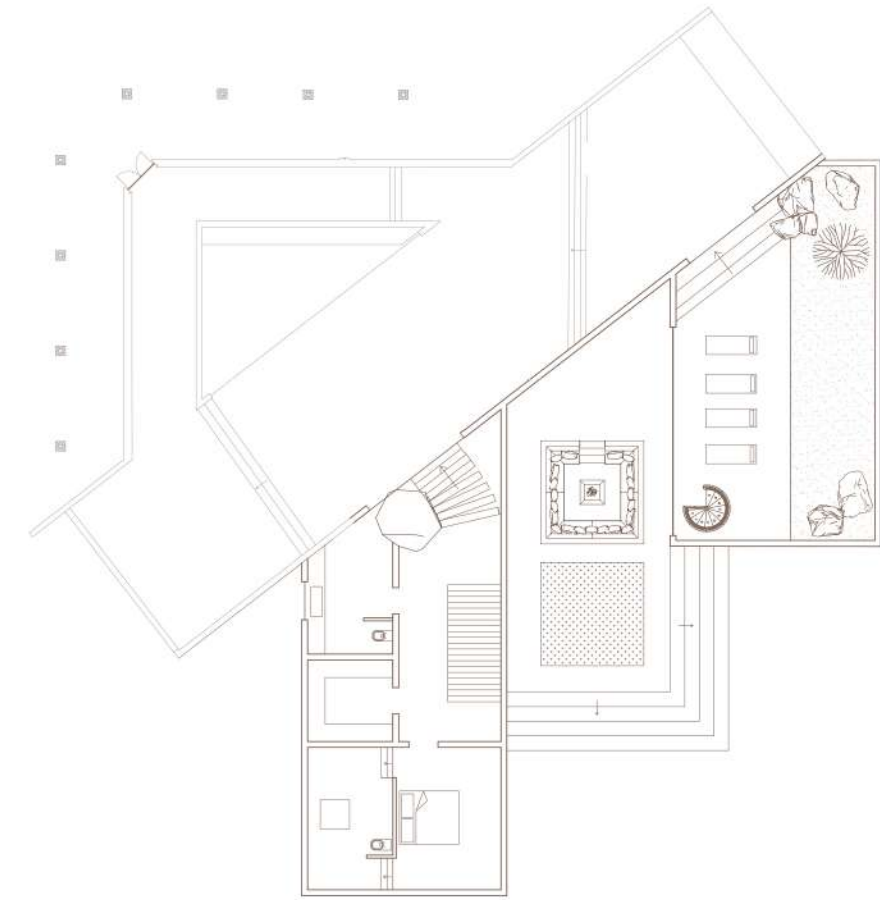


KITCHEN DETAIL PLAN  
SCALE: 1:50

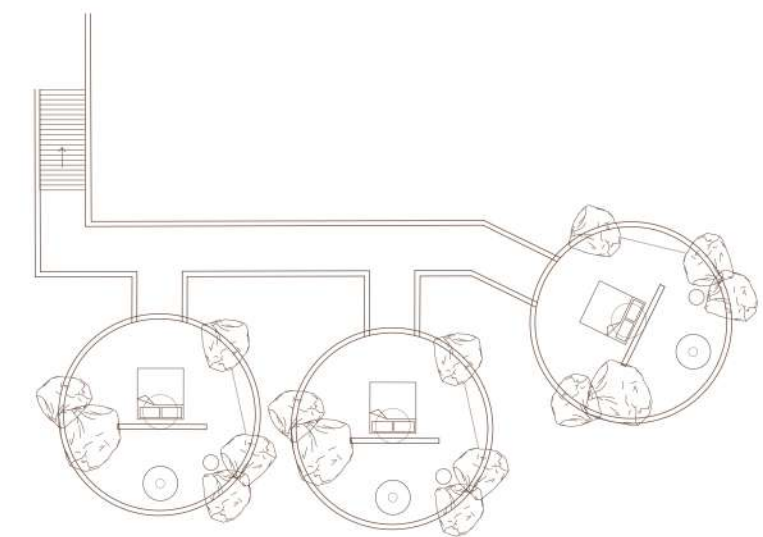


PG BISON GROUND FLOOR PLAN  
SCALE: NTS

PG BISON TECHNICALS

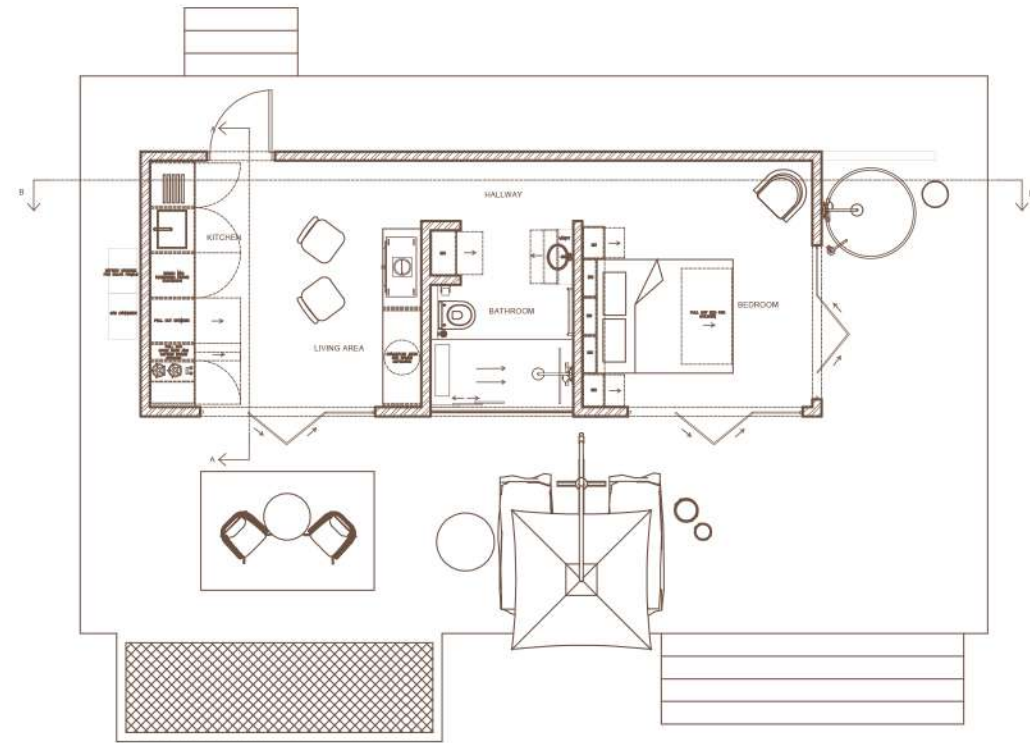


PG BISON - 1 FLOOR PLAN  
SCALE: NTS

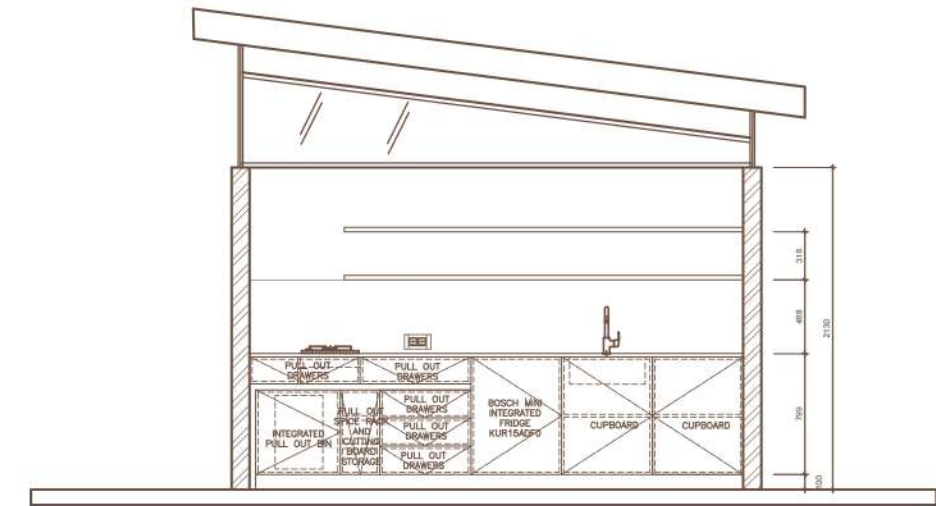


PG BISON -2 FLOOR PLAN  
SCALE: NTS

PG BISON TECHNICALS



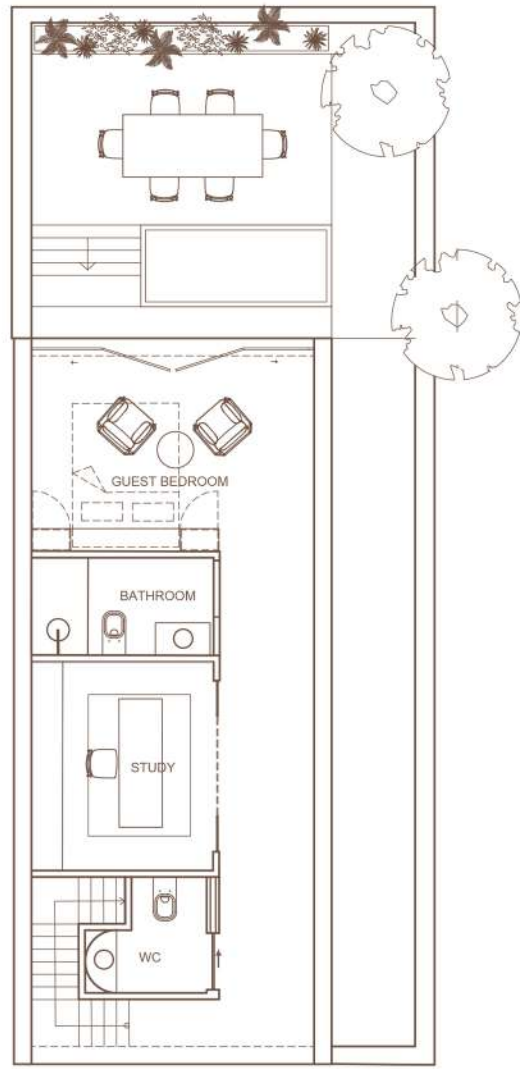
STAY UNIQUE FLOOR PLAN  
SCALE: NTS



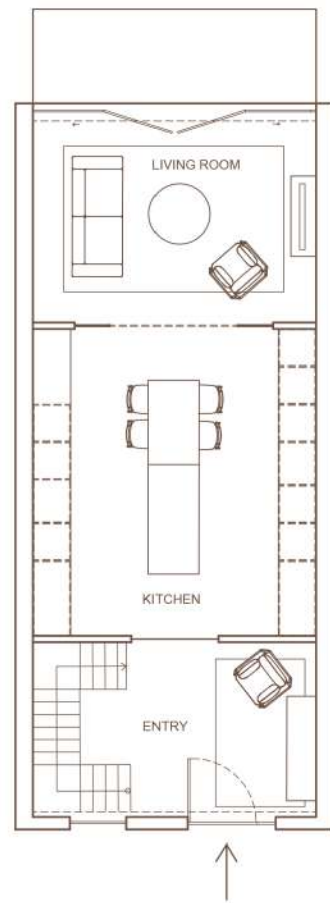
STAY UNIQUE ELAVATION AA  
SCALE: NTS



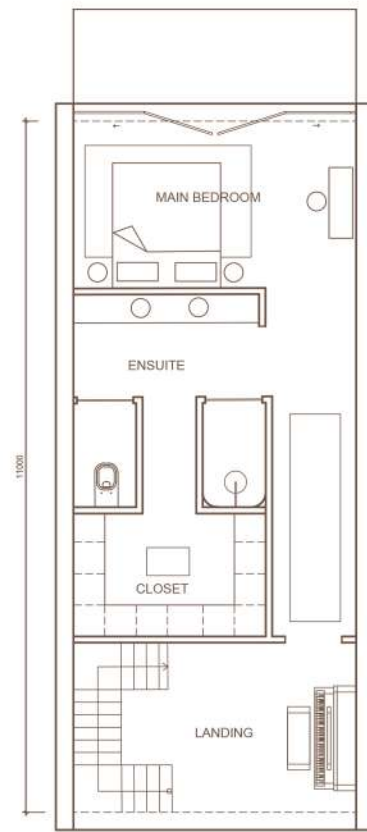
STAY UNIQUE ELEVATION BB  
SCALE: NTS



BOXED  
BASEMENT FLOOR PLAN  
SCALE: NTS

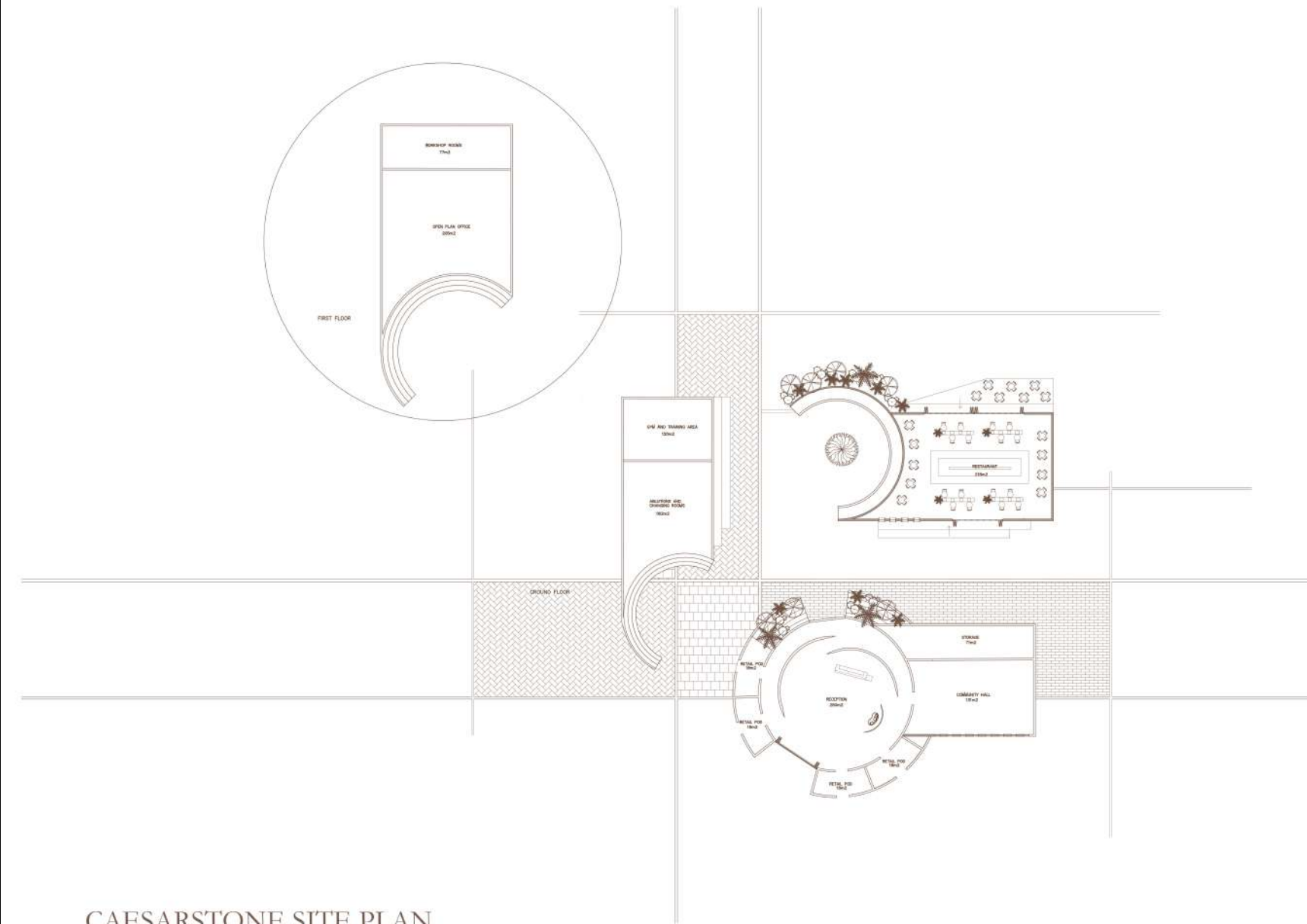


BOXED  
GROUND FLOOR PLAN  
SCALE: NTS



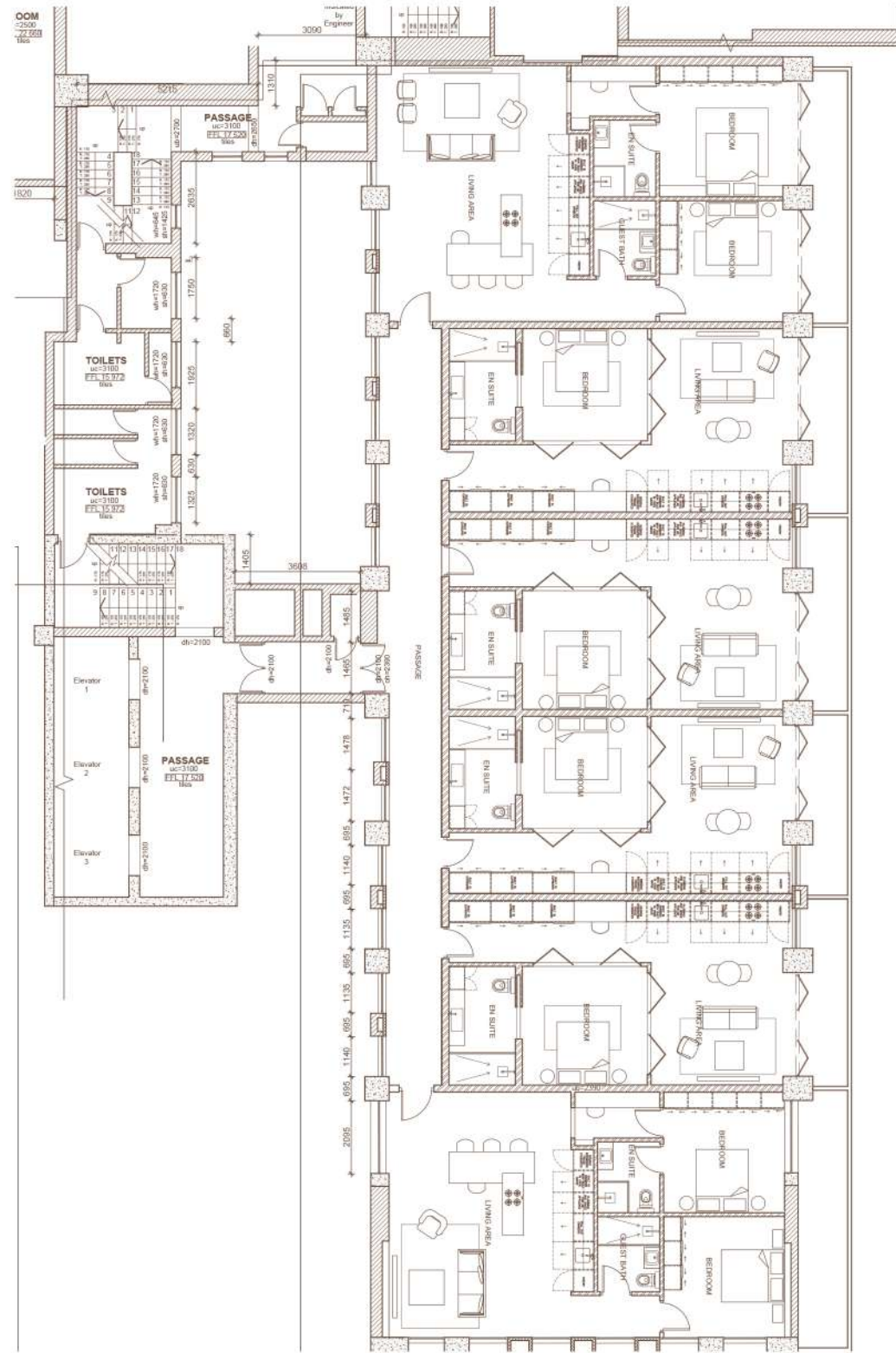
BOXED  
1ST FLOOR PLAN  
SCALE: NTS

BOXED TECHNICALS

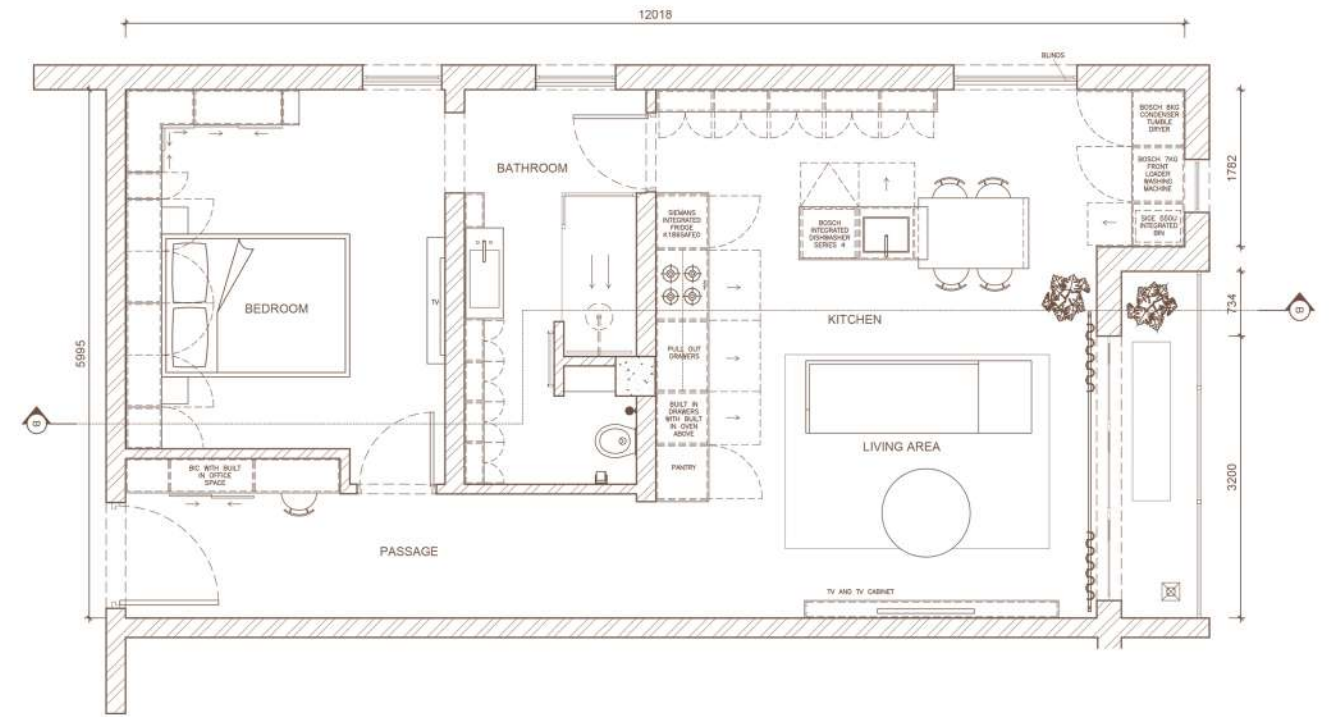


CAESARSTONE SITE PLAN  
SCALE: NTS

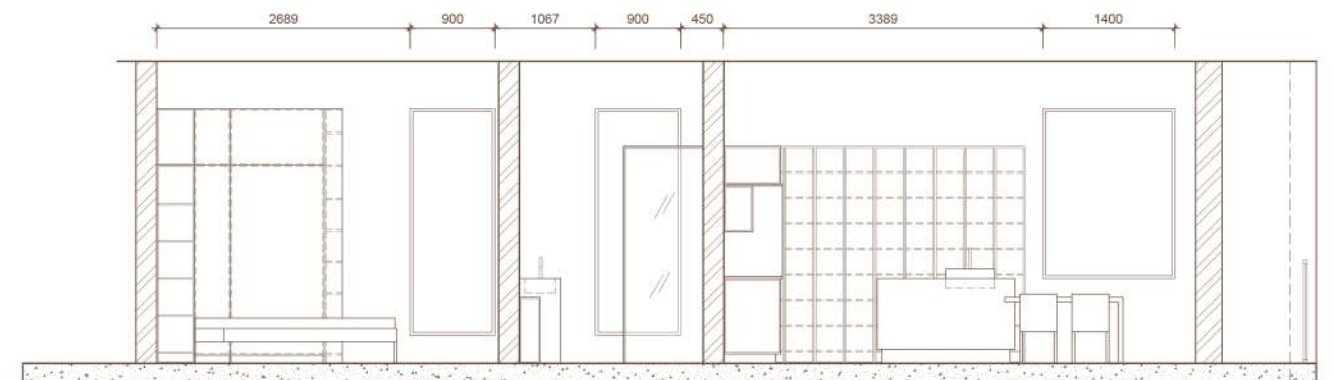
CAESARSTONE TECHNICALS



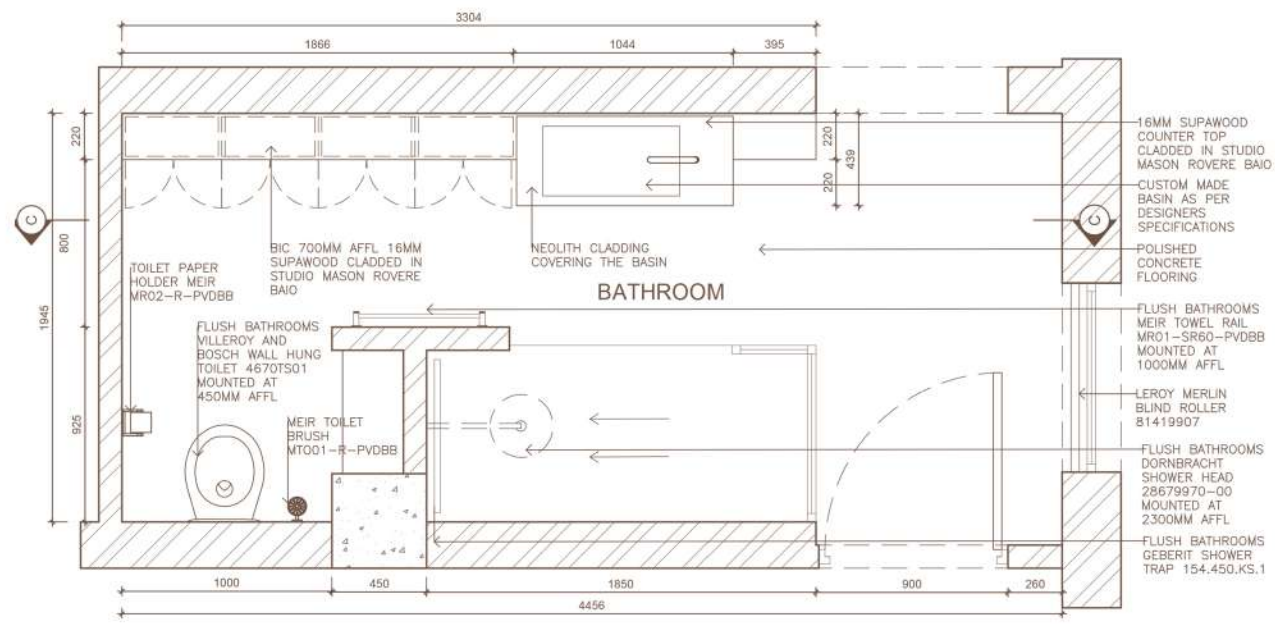
BOXWOOD 9TH FLOOR PLAN  
SCALE: NTS



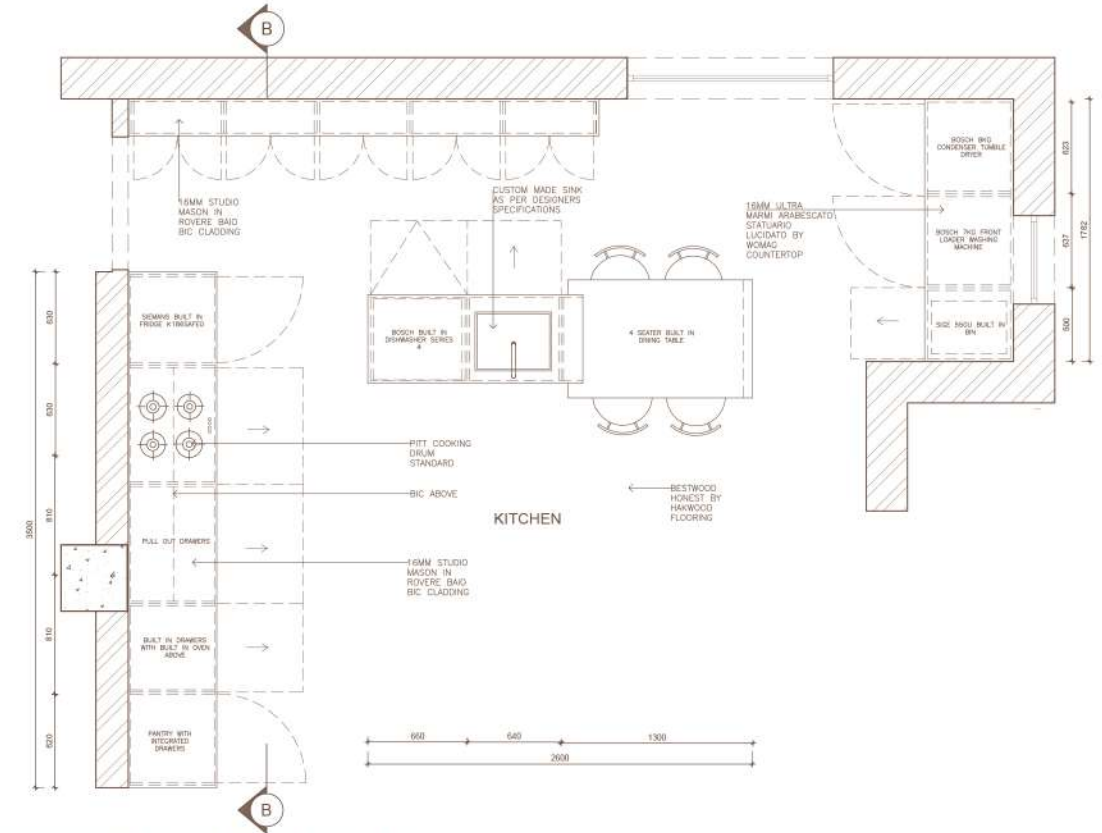
ON Q FLOOR PLAN  
SCALE: NTS



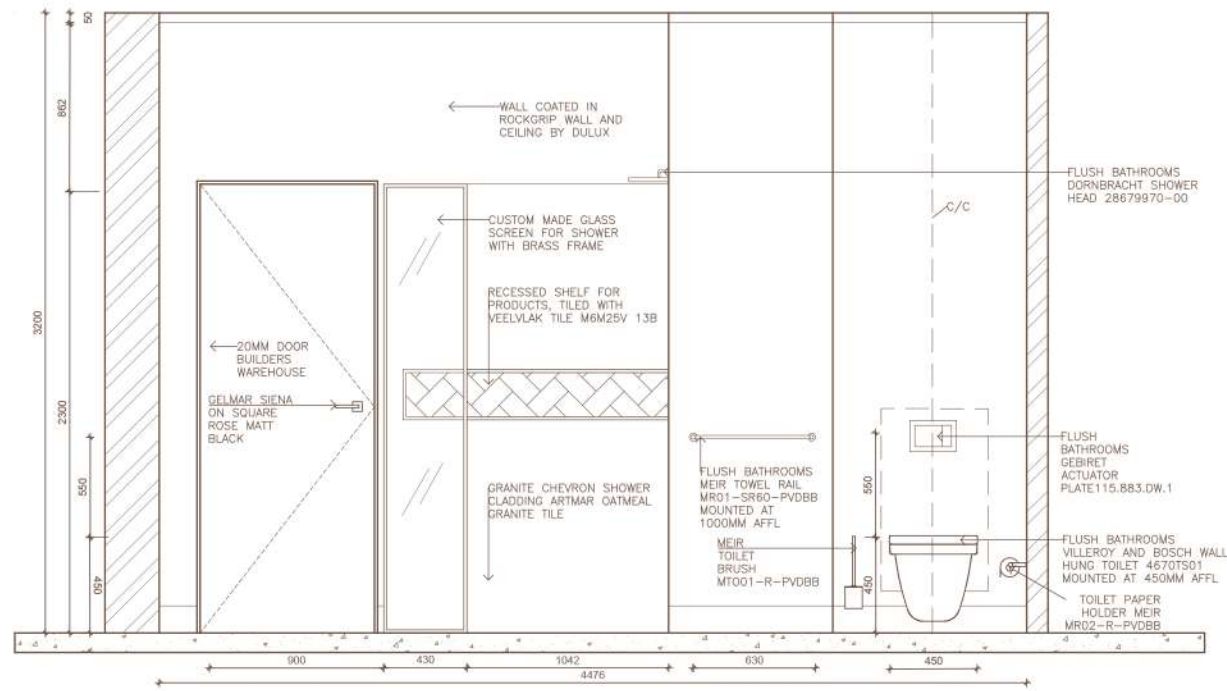
ON Q ELEVATION BB  
SCALE: NTS



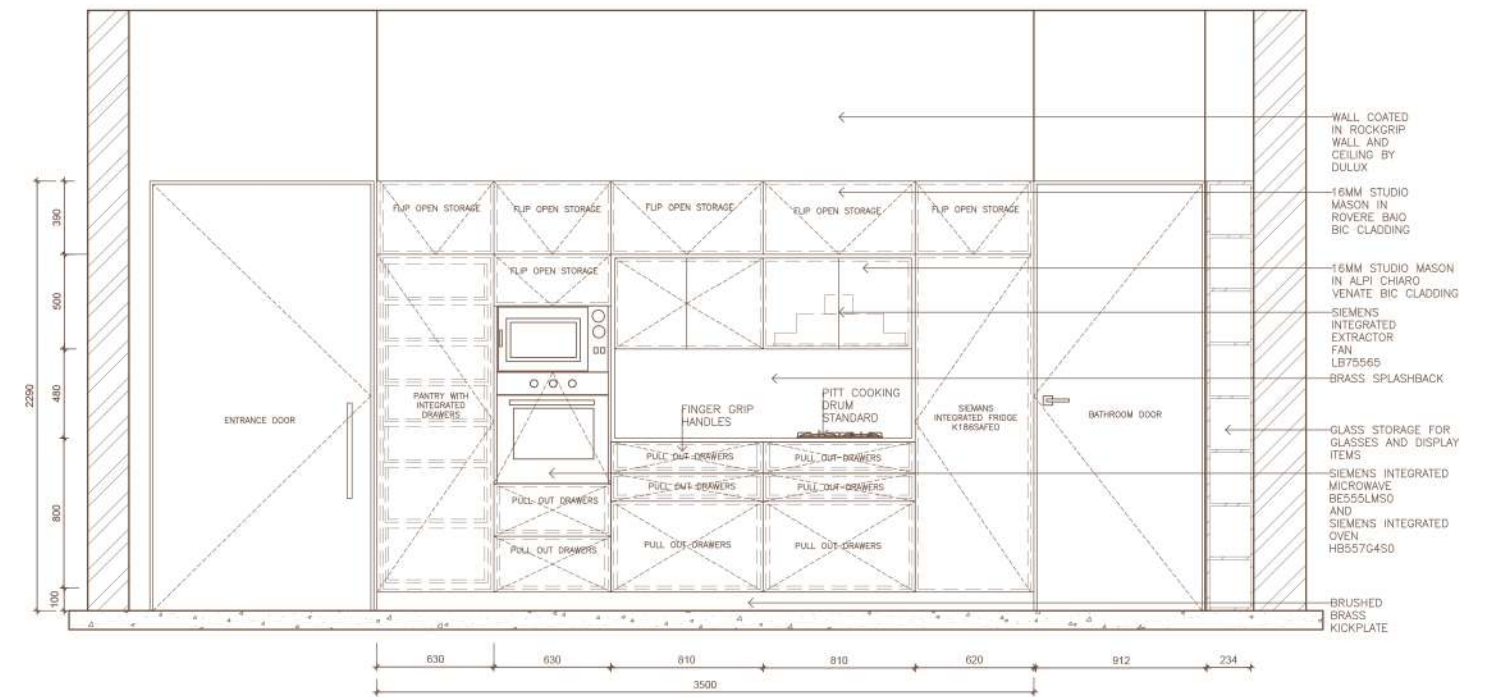
ON Q BATHROOM FLOOR PLAN  
SCALE: NTS



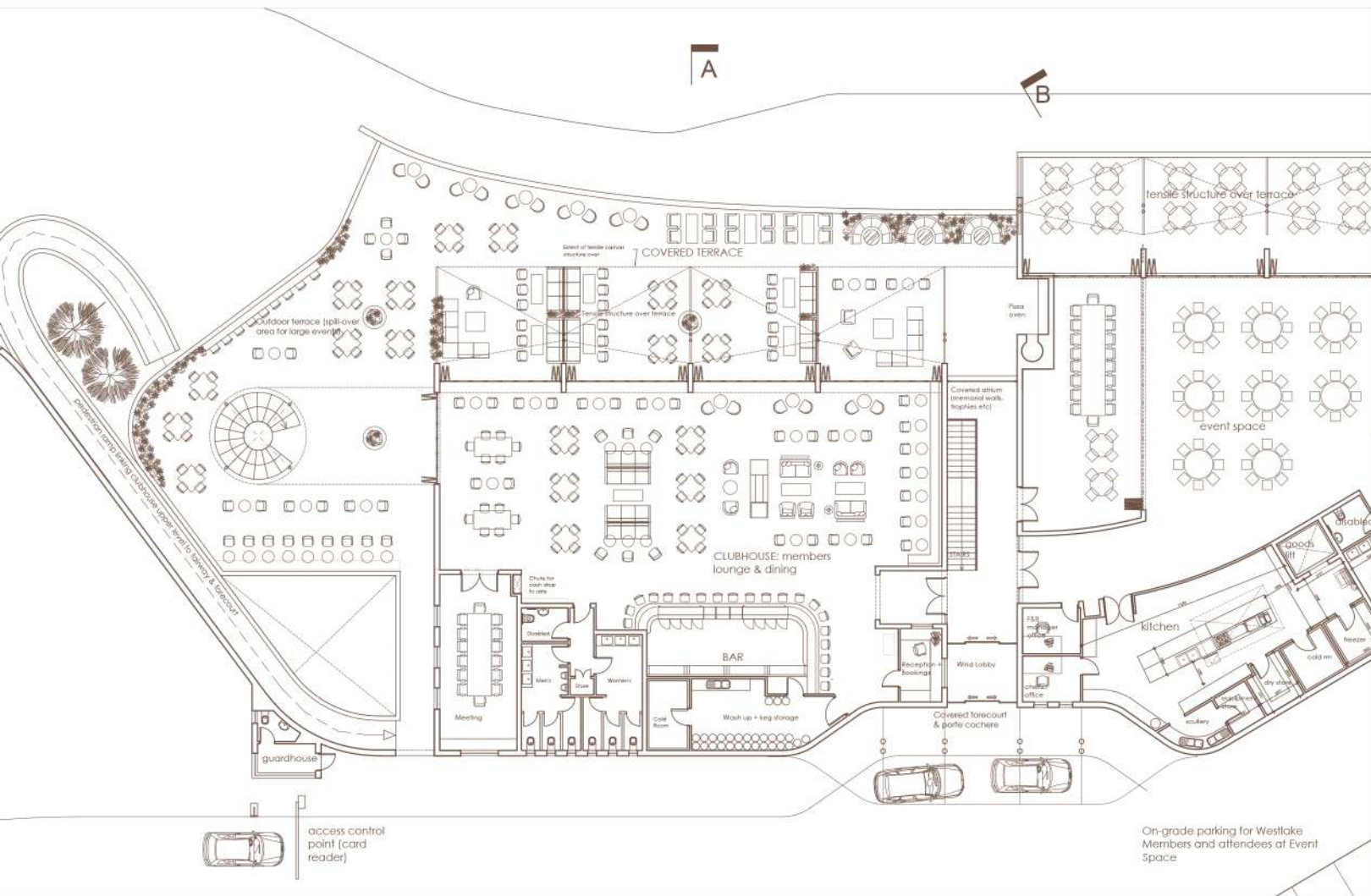
ON Q KITCHEN FLOOR PLAN  
SCALE: NTS



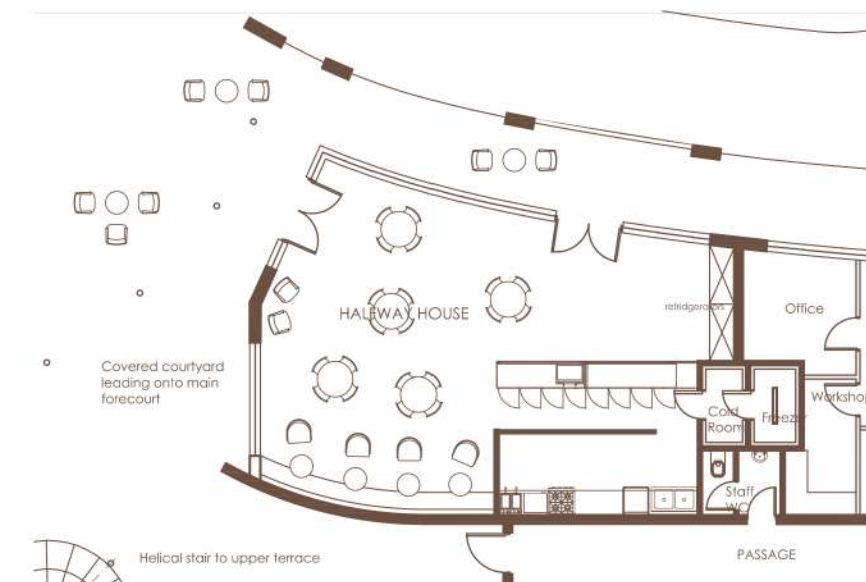
ON Q ELEVATION CC  
SCALE: NTS



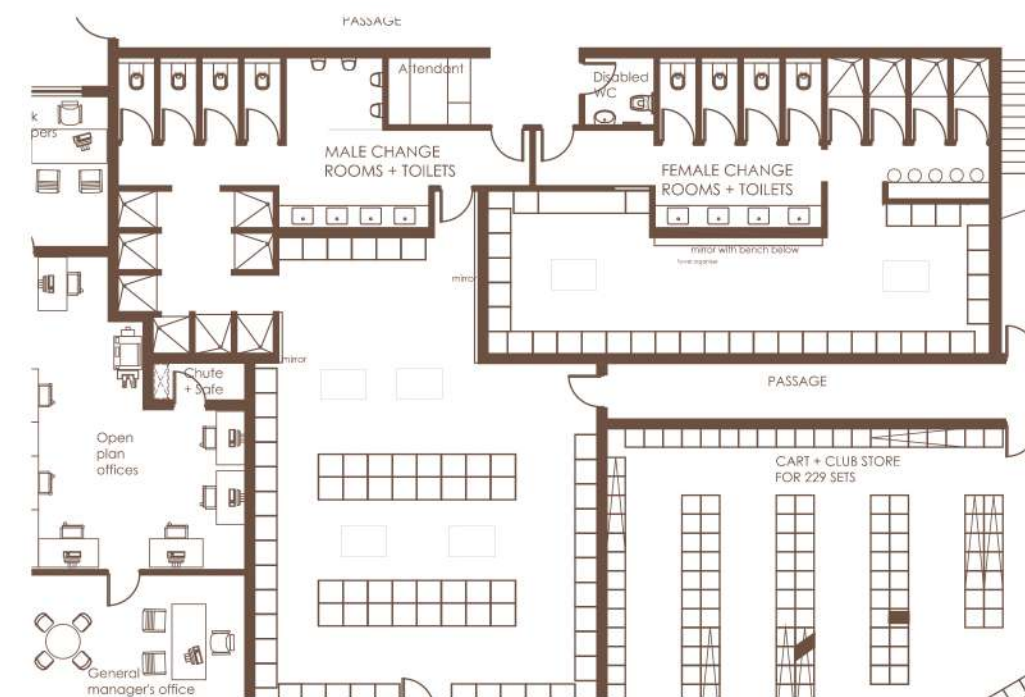
ON Q ELEVATION BB  
SCALE: NTS



WESTLAKE CLUB HOUSE FLOOR PLAN  
SCALE: NTS



WESTLAKE HALFWAY HOUSE FLOOR PLAN  
SCALE: NTS

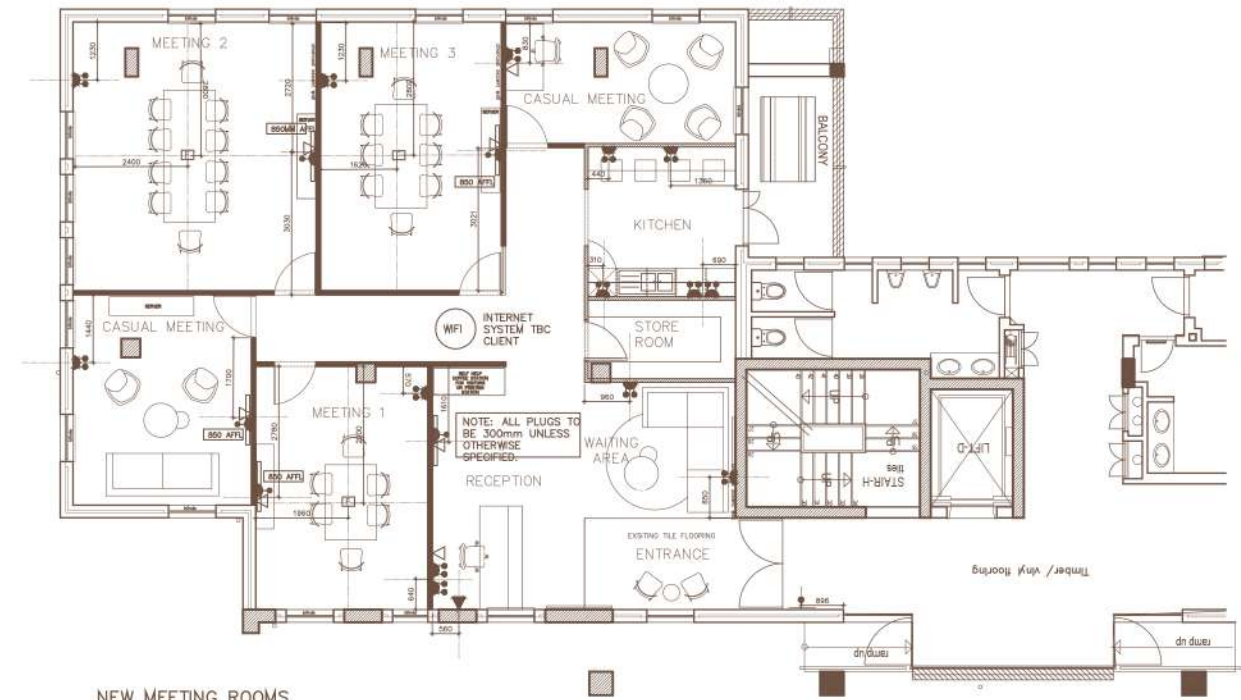


WESTLAKE CHANGING ROOMS FLOOR PLAN  
SCALE: NTS





NEW MEETING ROOMS  
GENERAL LAYOUT



NEW MEETING ROOMS  
ELECTRICAL AND DATA

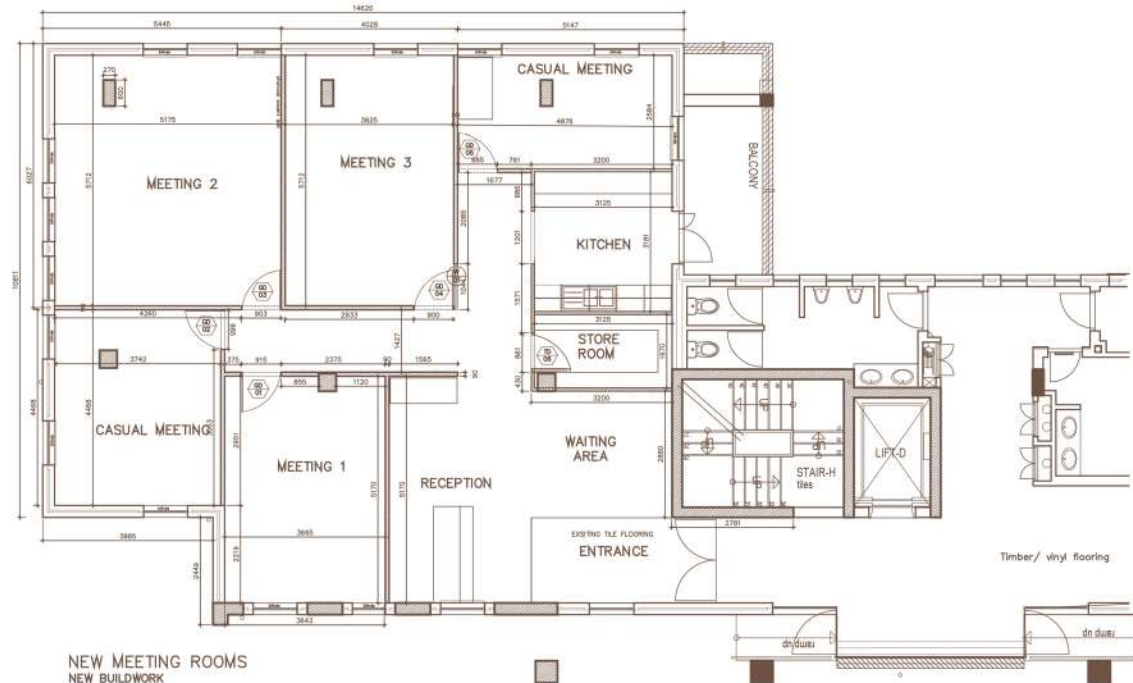
ELECTRICAL OUTLET LEGEND:

- 15A Dual Switched Socket
- 15A Single Switched Socket
- Socket at front entrance with motion sensor
- 100mm x 100mm Floor box as per spec
- Slide Point
- Telephone Point

NOTES: PLUGS IN ALL POOS TO HAVE THE FOLLOWING:  
- USB  
- 2POINT  
- 3POINT

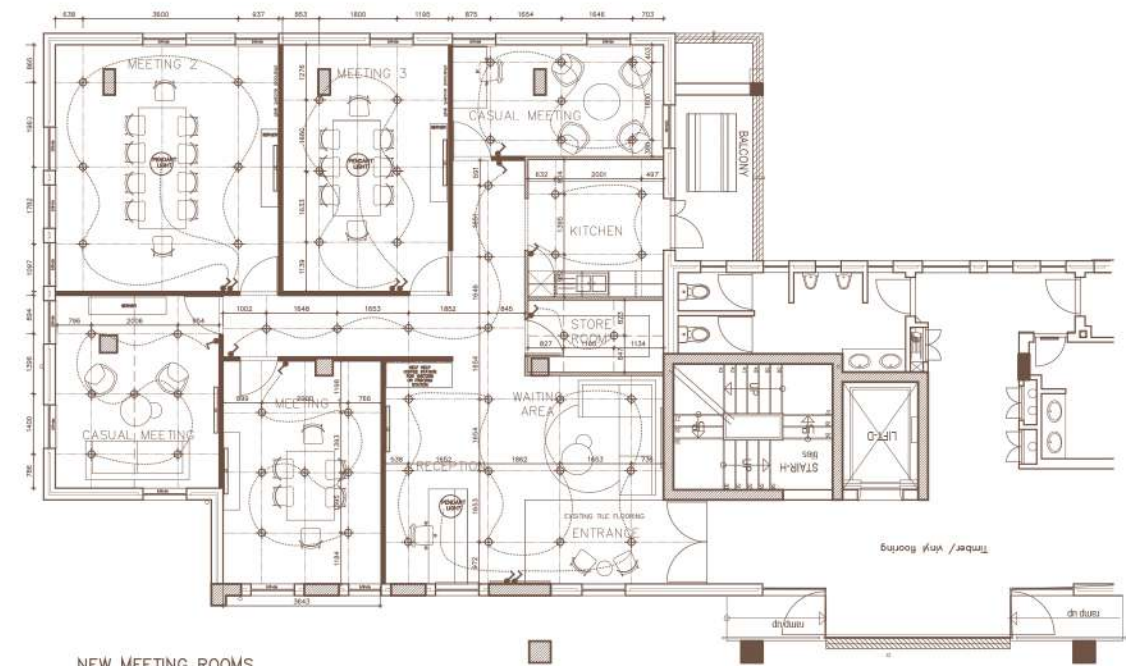
ALL PLUGS TO BE AT 300mm AFFL UNLESS OTHERWISE SPECIFIED.

NOTE: ALL PLUGS TO BE 300mm UNLESS OTHERWISE SPECIFIED.



NEW MEETING ROOMS  
NEW BUILDWORK

NEW 90mm DRYWALL with insulation



NEW MEETING ROOMS  
GENERAL LIGHTING PLAN

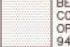


LIGHTING LEGEND:

- SPEC: LED Ectopie Tri Round GU10 recessed 85mm Downlight Lighting.co.nz
- SPEC: BLACK SWITCH WITH 1/2 LEVERS LEROY MERLIN CODE: 81447481
- SPEC: George Ribbond Gray Or White LED Pendant Light Lighting.co.nz

NOTE: FINAL POSITION OF PENDANT LIGHTS TO BE DETERMINED ON SITE



NEW MEETING ROOMS  
FLOOR FINISHES PLAN

-  BELGOTEX LIFESTYLE CONSCIOUS RANGE IN OPEN STATE 94m<sup>2</sup>
-  TERAZZO TILE FROM UNION TILES - CODE W34HPSL 41m<sup>2</sup>
-  ITALTILE PROMAX BLACK ALUMINIUM SQUARE EDGE TRIM

THANK YOU!

