

Gillian van der Westhuizen

Interior Design | Design Time Pty Ltd.



01 LUXURY PODS & HOTEL | EXAM PROJECT  
01- 17

02 CAESARSTONE STUDENT DESIGN COMPETITION  
IN HOUSE TOP 5  
18- 25

03 VINTAGE WITH LOVE | GROUP PROJECT WINNING TEAM  
26- 32

04 WORKING DRAWING PACKAGE  
33- 38

05 ATLANTIC STUDIO PROJECT  
39- 44

06 PRODUCT & OBJECT DESIGN  
45- 50

07 DOCK HAUS  
51- 55

08 KSA - KITCHEN DESIGN  
56-60

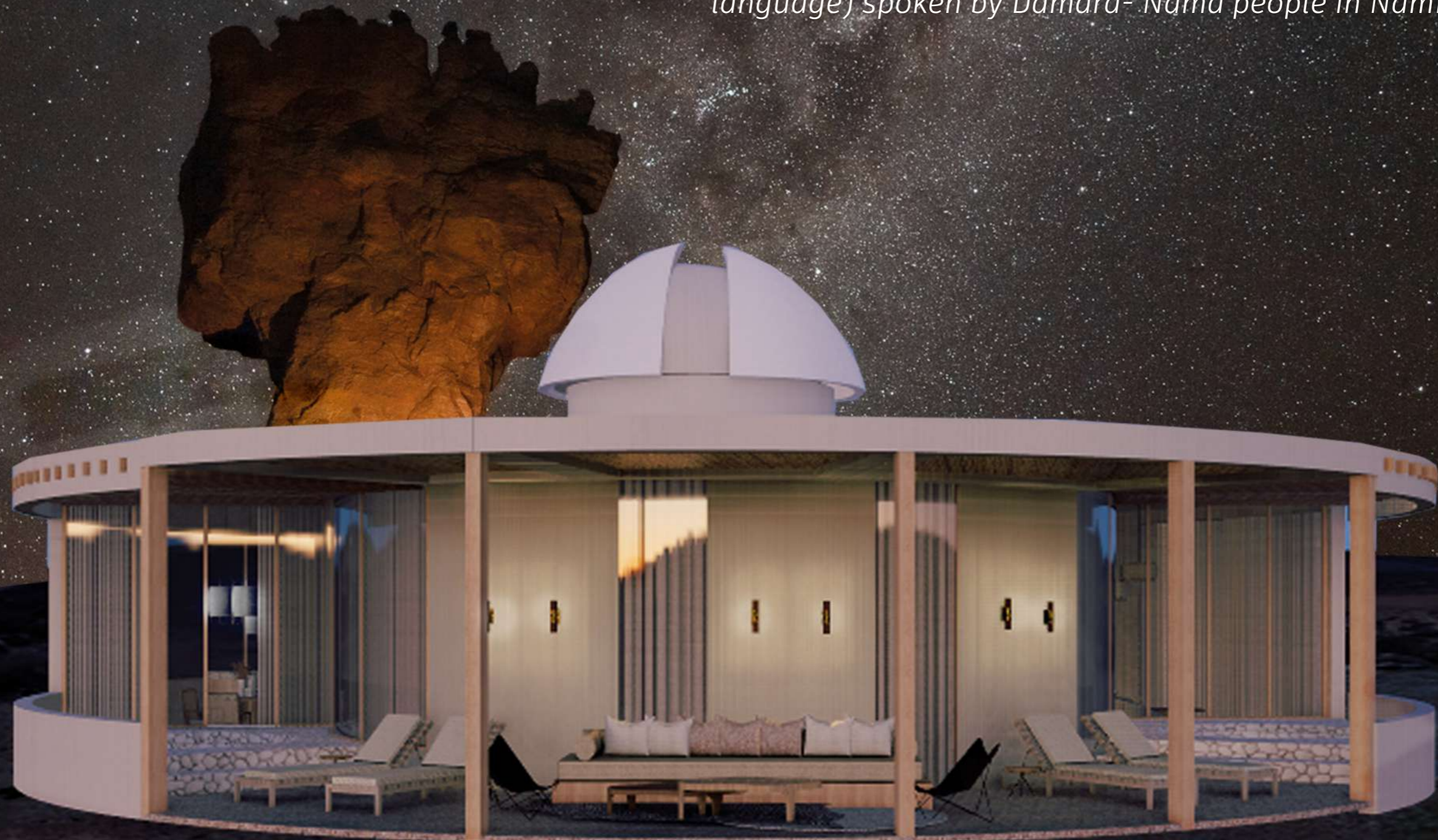
## CONCEPT

In my search for the perfect location for an out of this world experience within 4 hours drive from Cape Town I was immediately drawn to the Cederberg. This locations natural beauty and rich history linked to The San and The KhoiKhoi tribes (now known as the The Khoisan) inspired my design for both my hotel and the experiential pods . The Khoisan lifestyle, use of materials, color hues and tales about the constellations, specifically the milky way, are key design influences in my luxury pods, called "Ti Homi" (my sky) . In addition, the architecture mimics the original homes of The San and Khoi.

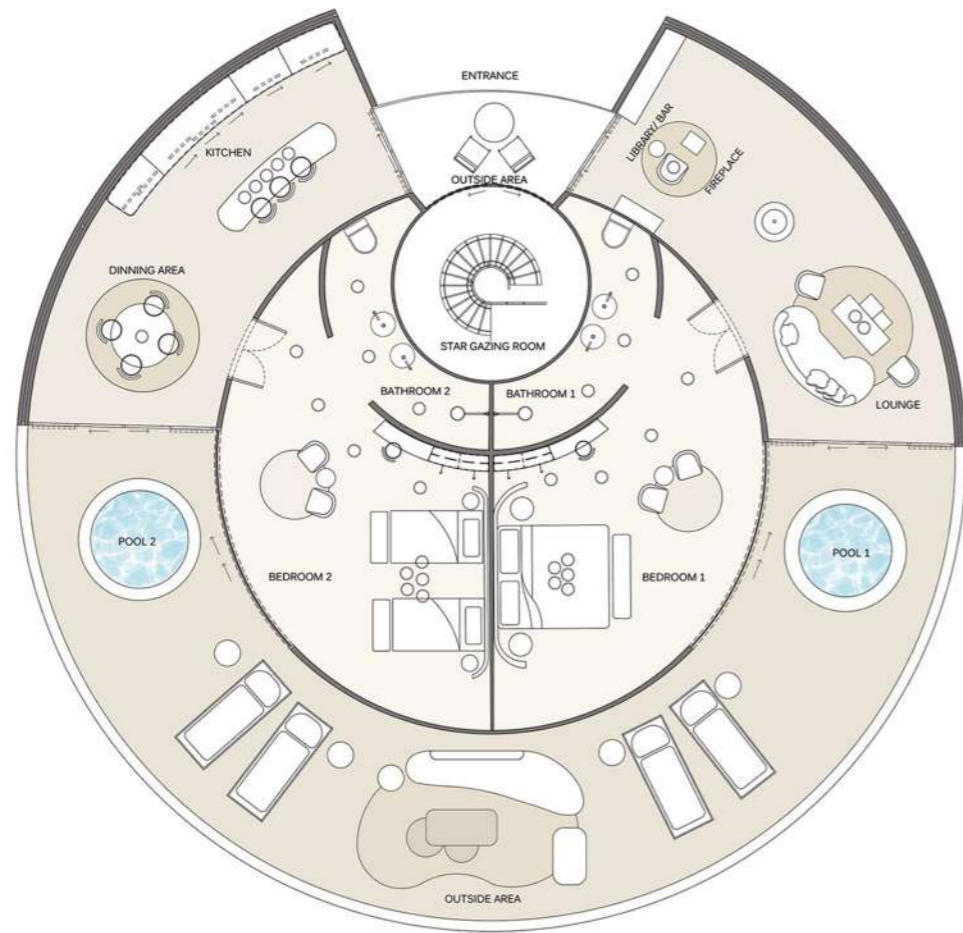


# Ti lHomi

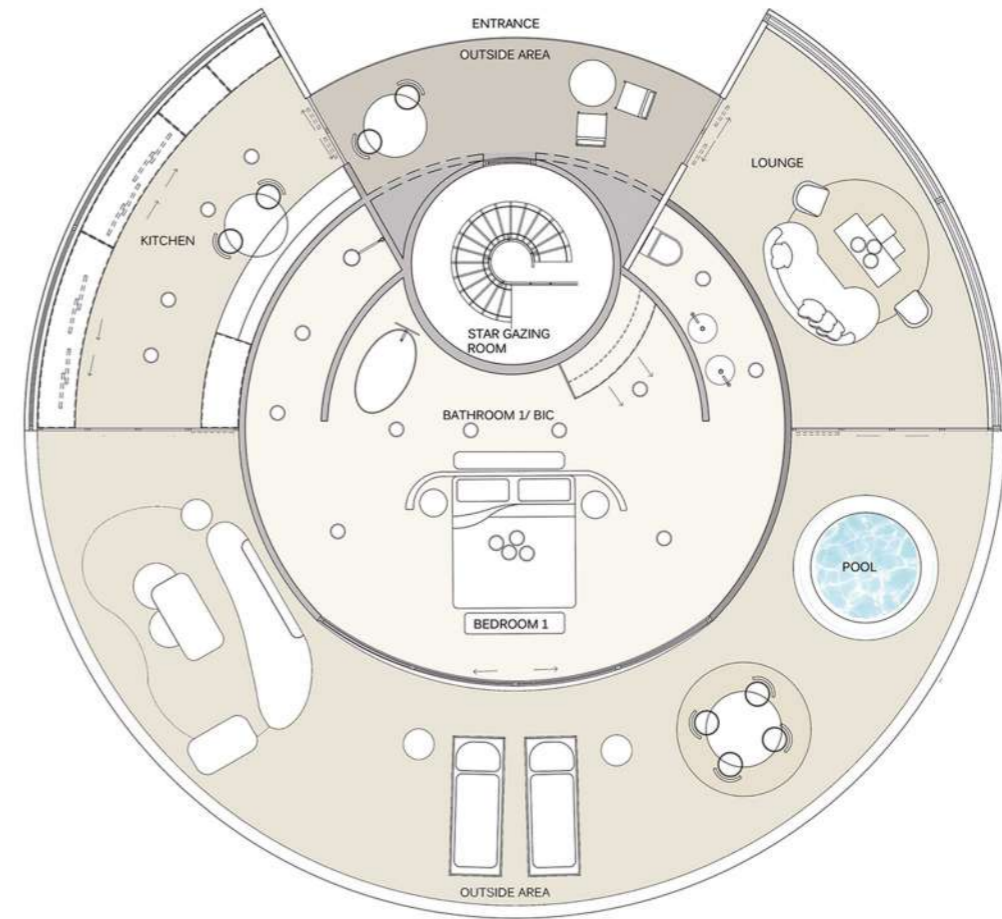
*“My Sky”: Khoe-Khoe Gowab (Gowab means Damara language) spoken by Damara- Nama people in Namibia*



Ti Homi Luxury pod exterior



Ti Homi single luxury pod floor plan



Ti Homi double luxury pod floor plan



Scientific Anatomy of the milk-way= floor plan design

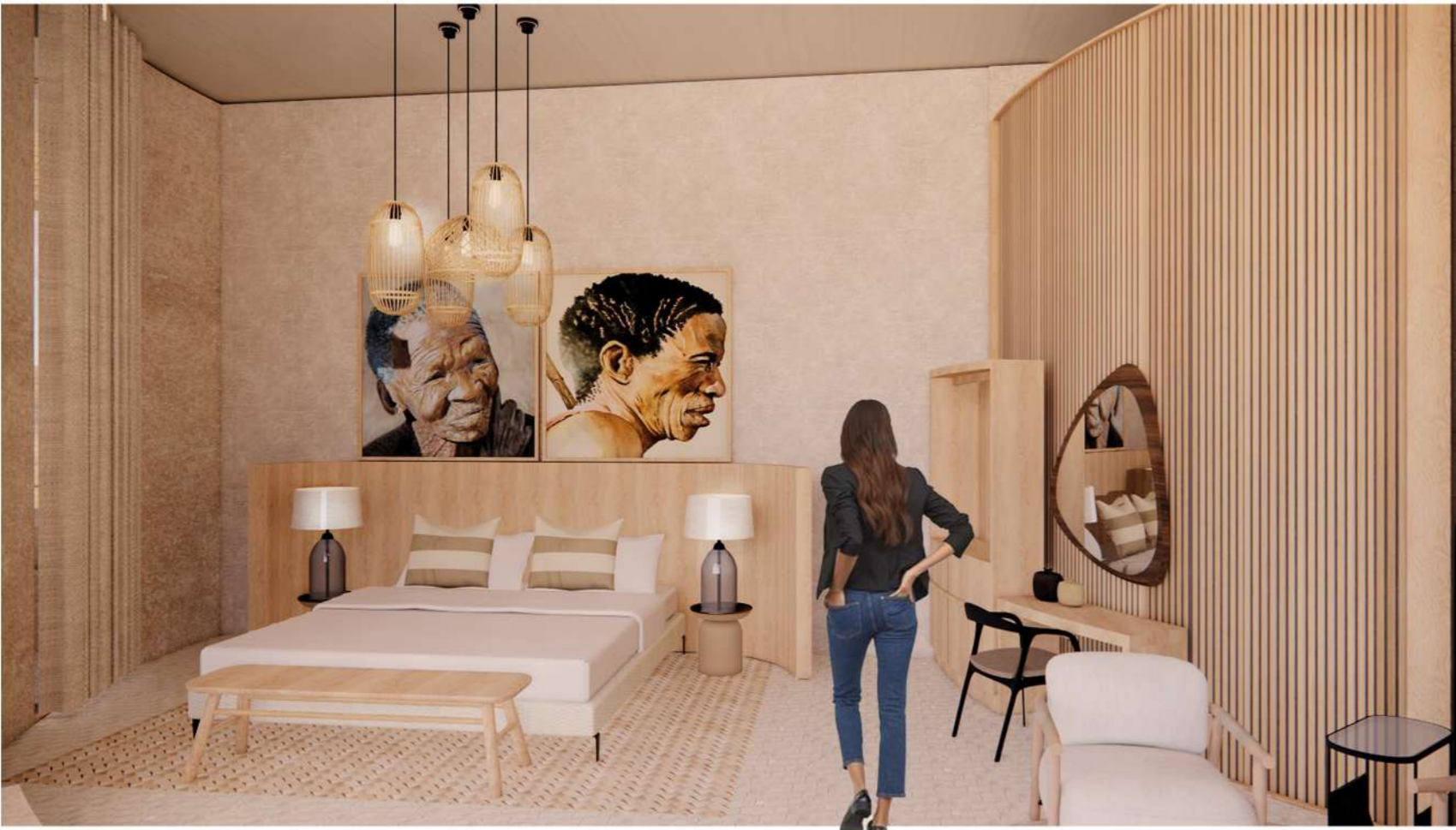


The milky way the human eye sees

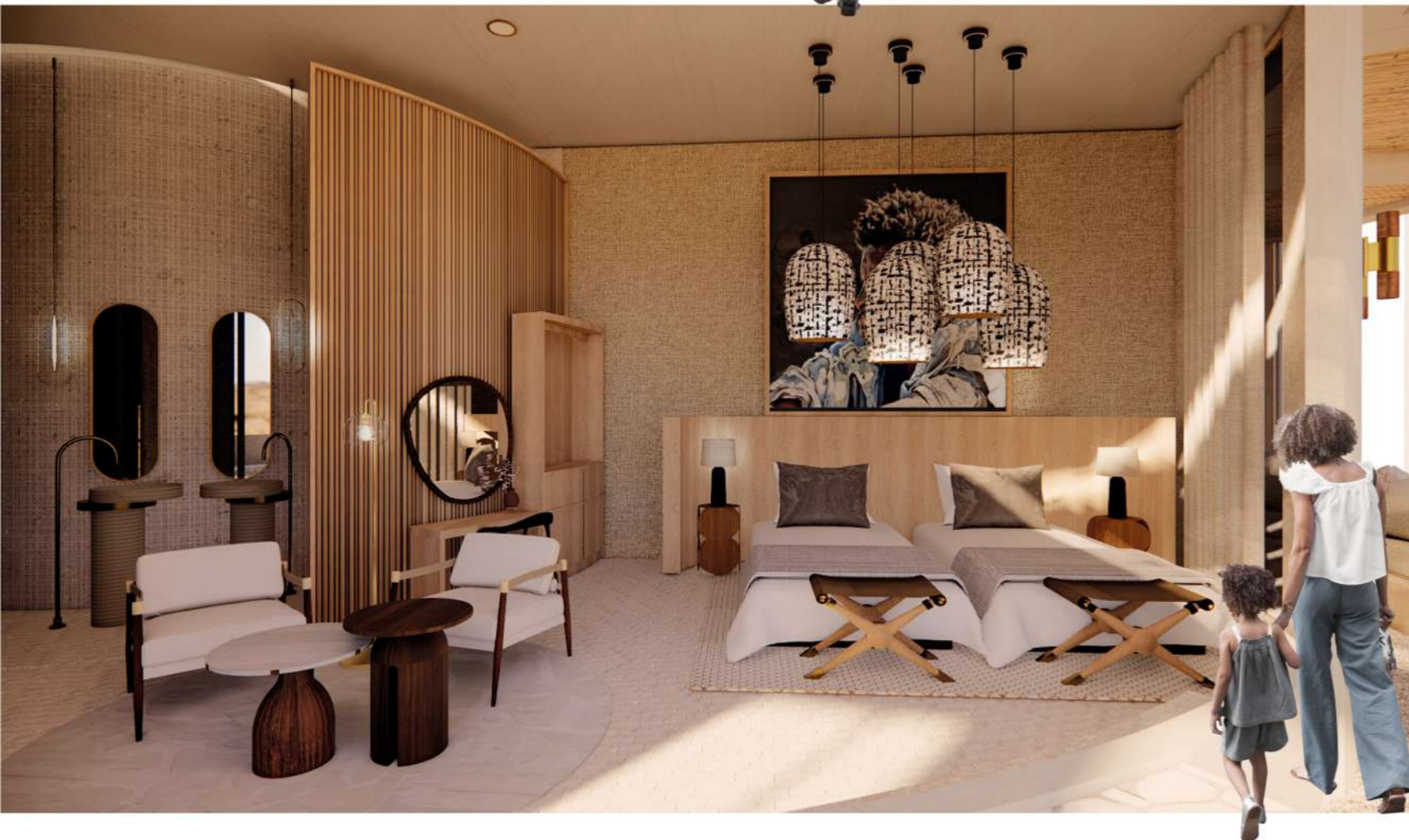


The Khoisan tale of the girl who threw ashes to the sky



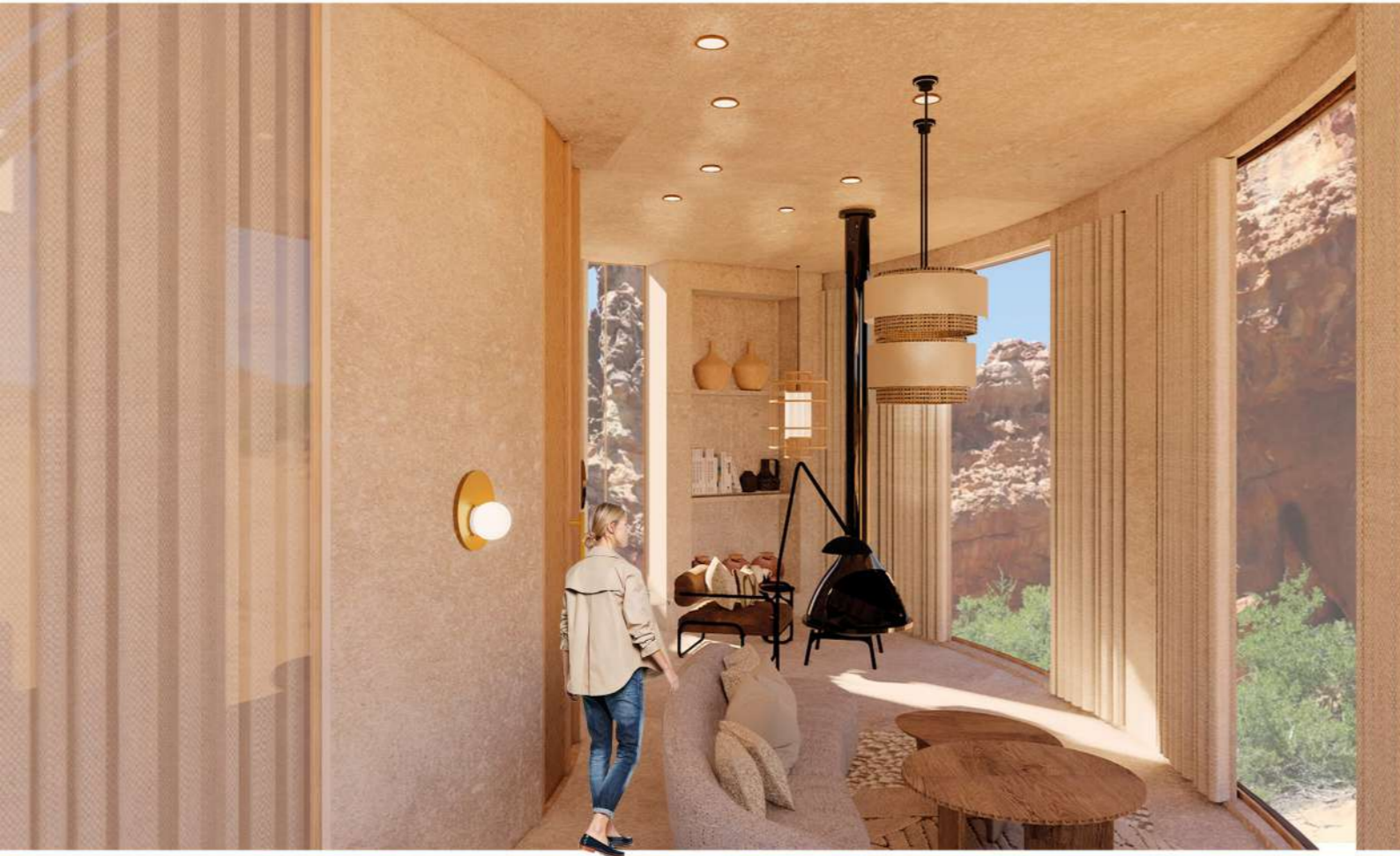


Ti Homi bedroom 1

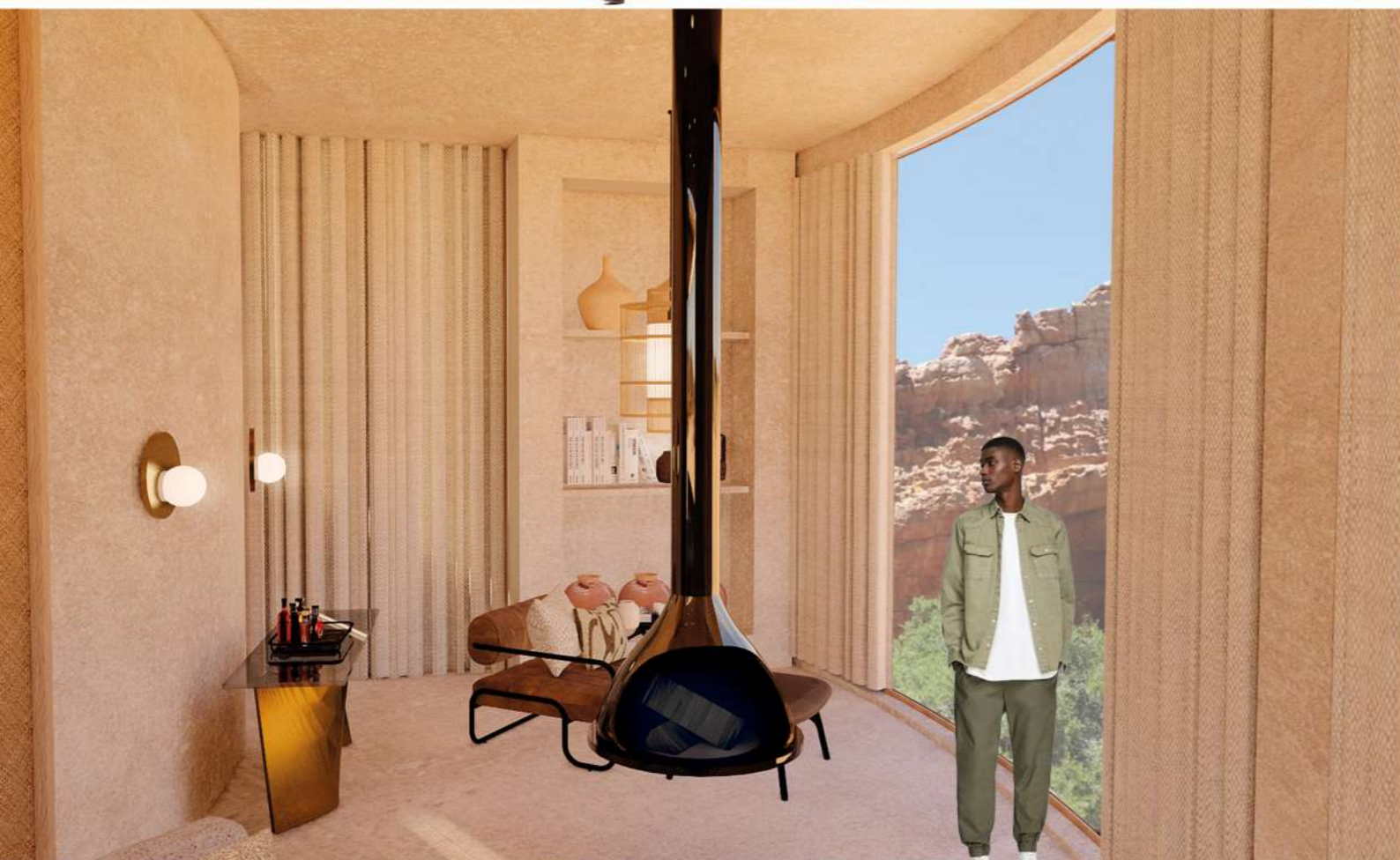


Ti Homi bedroom 2





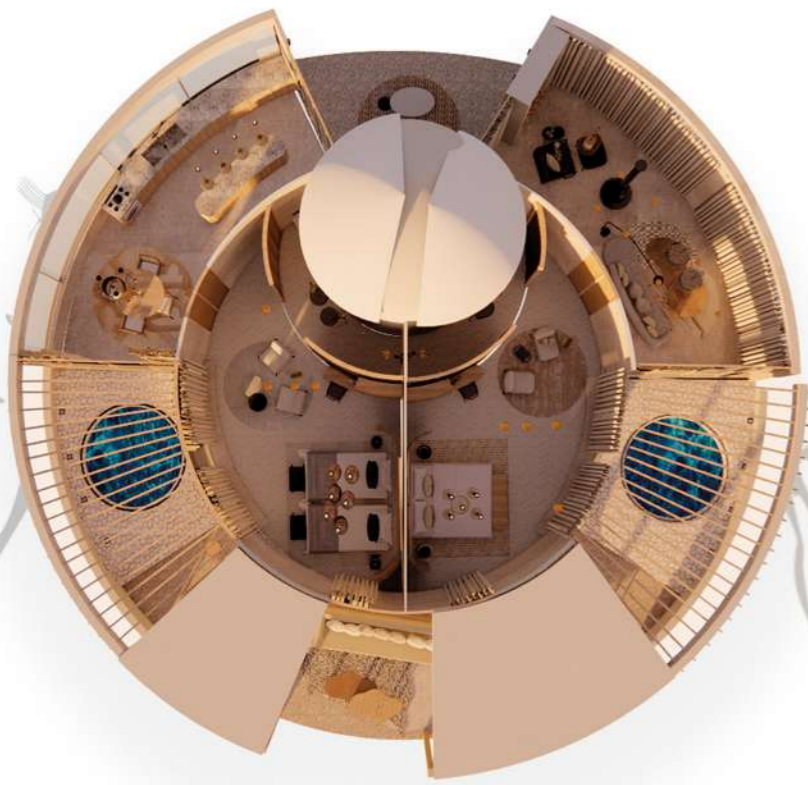
Ti Homi living room



Ti Homi reading nook



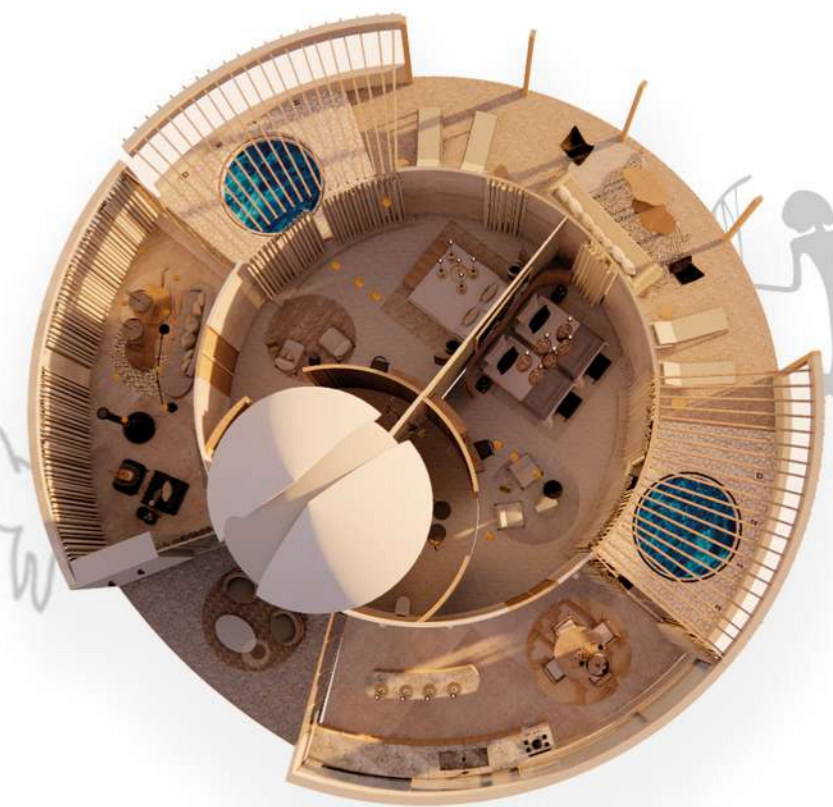




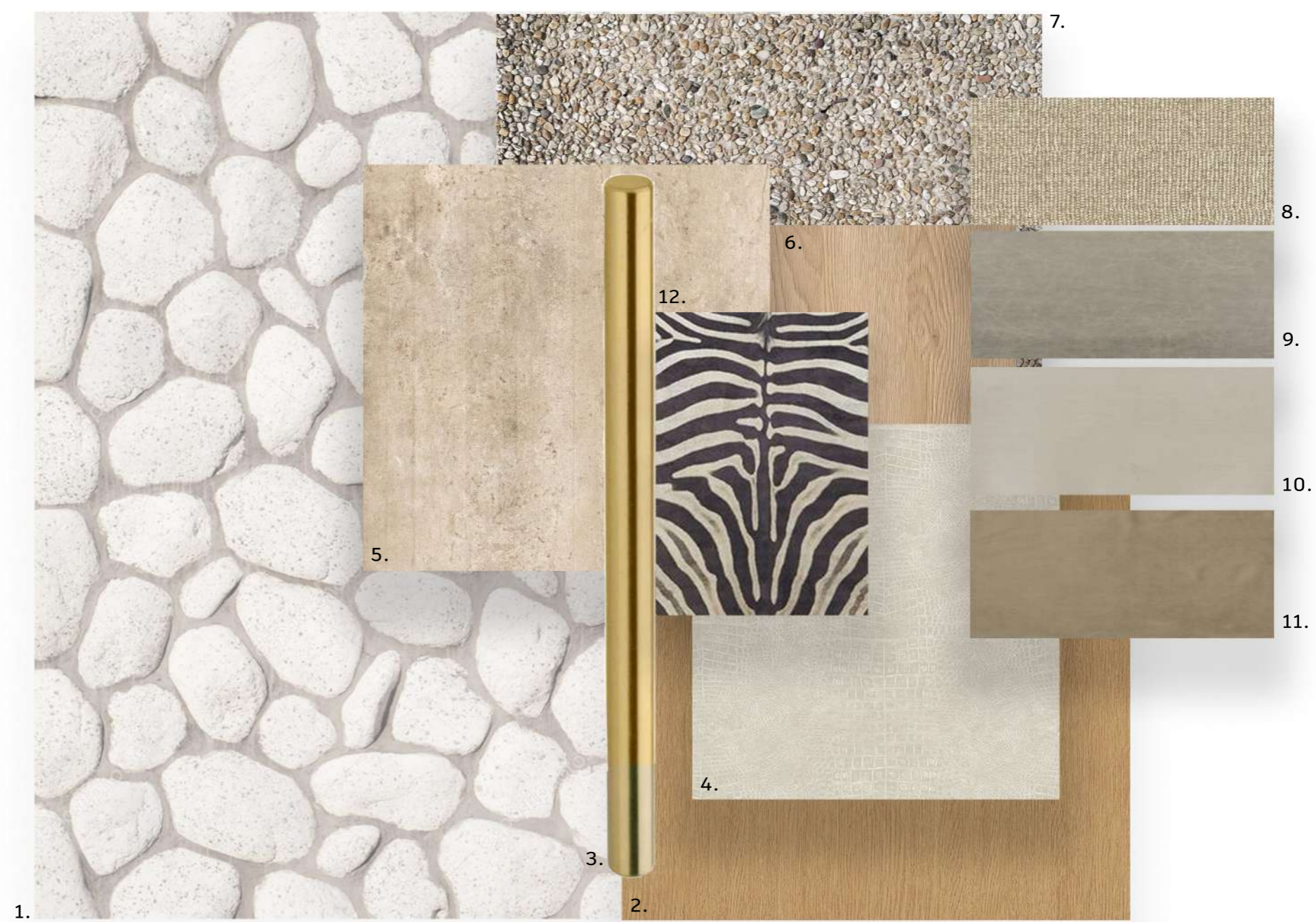
Ti Homi Luxury pod axo



Ti Homi Luxury pod exterior



Ti Homi Luxury pod axo



1. WILSTONE STONE 2. OGGIE HARD WOOD FLOORING 3. HANDLES INC 4. MAVROMAC WALLPAPER 5. CEMCRETE WALL FINISH 6. OGGIE HARD WOOD FLOORING 7. CEMCRETE AGGREGATED EXTERIOR FLOOR FINISH 8. MAVROMAC FABRICS 9. HERTEX LEATHER 10. HETEX LEATHER 11. HERTEX LEATHER 12. FAUX ZEBRA PRINT RUG SIXTH FLOOR

Ti Homi Luxury pod materials board



Ti Homi Luxury pod kitchen & dining area



Ti Homi Luxury pod kitchen & dining area



1. VIPP CABIN ROUND TABLE- OAK BASE 2. NATURAL LINEN COLLAPSIBLE PENDANT LIGHT - BESPOKE HOME 3. ROUND JUTE RUG - ESQUE 4. FIONA DINING CHAIR LA GRANGE INTERIORS



1. ABBRACCI CURVED COUCH BY LORENZA BOZZOLI 2. BLEVIO COFFEE TABLE BY MOLTENI & C. 3. ROUND ITALO TABLE BY MERIDIANI 4. MOONS WHITE & GOLD ROUND WALL SCONE 5. TIANA DOUBLE DRUM RATTAN





Ti Homi Luxury pod stargazing room and exterior

## CONCEPT

10 ON SEARLE STREET where my hotel “!hom Aib” is situated, was home to The San and The Khoi pre-colonialism, historically spoken. The strong Khoisan influences are thus also evident in my luxury hotel, celebrating and acknowledging the first inhabitants of South Africa, through the use of natural color, hues, subtle patterns, warm timber as well as the shape and form of the moon.

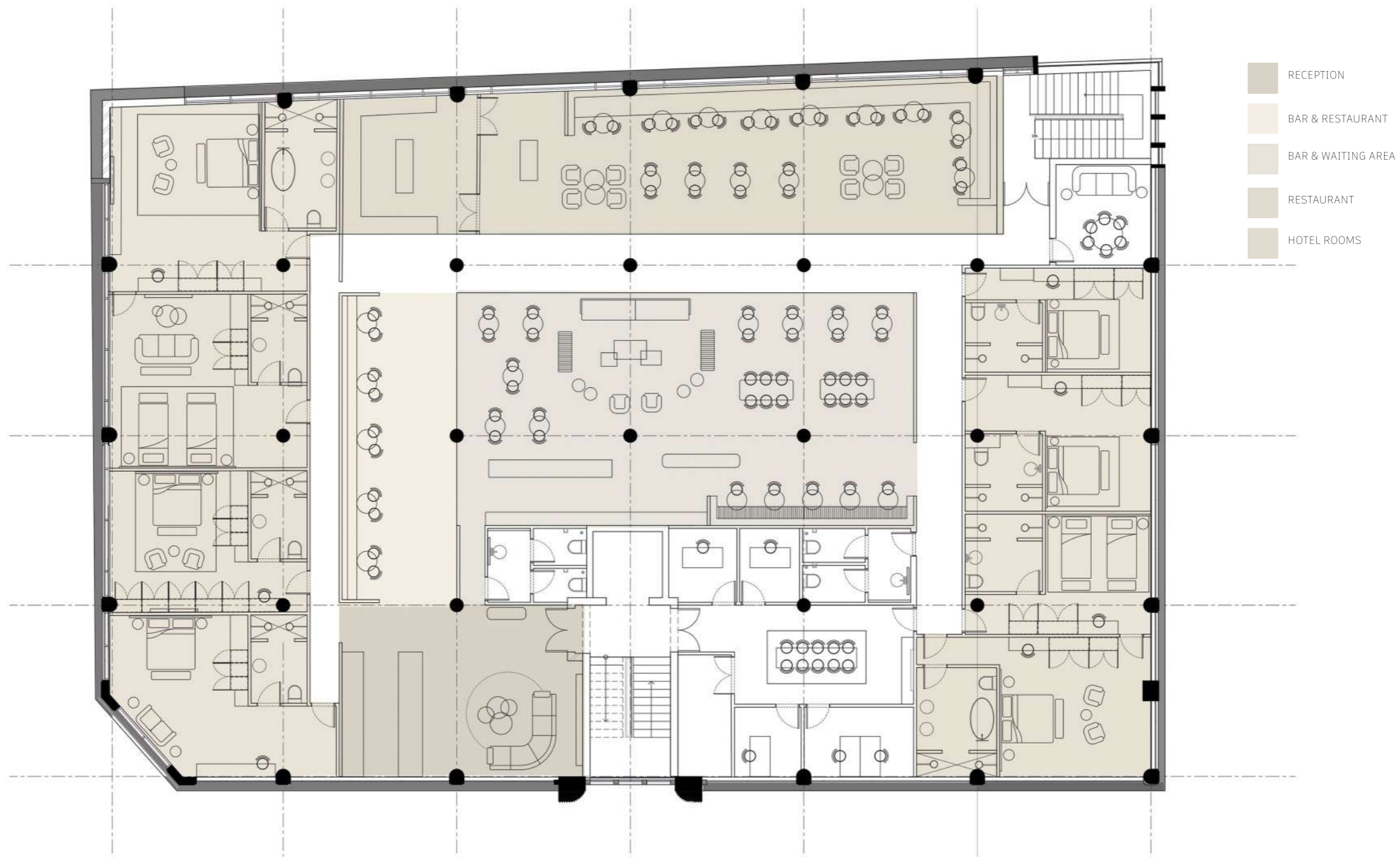
10 SEARLE STREET DISTRICT 6 CAPE TOWN 7925



# !hom Aib

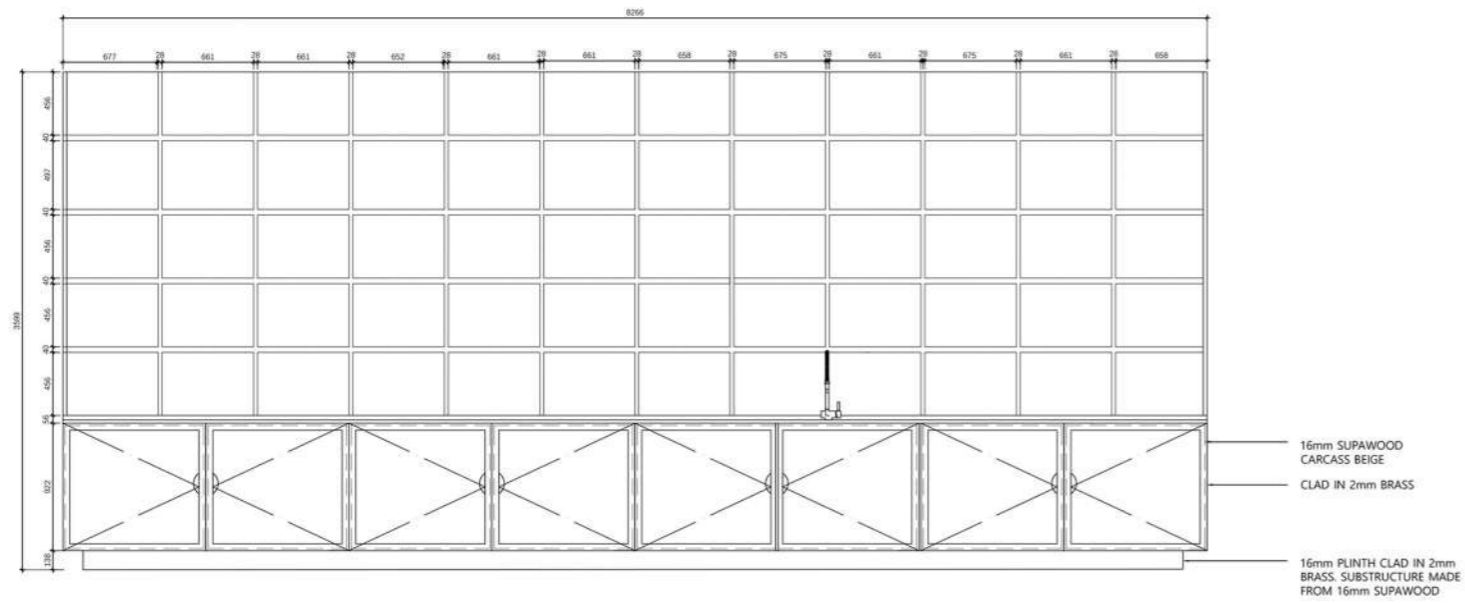
*"Heaven": Khoe-Khoe Gowab (Gowab means Damara language )spoken by Damara- Nama people in Namibia*



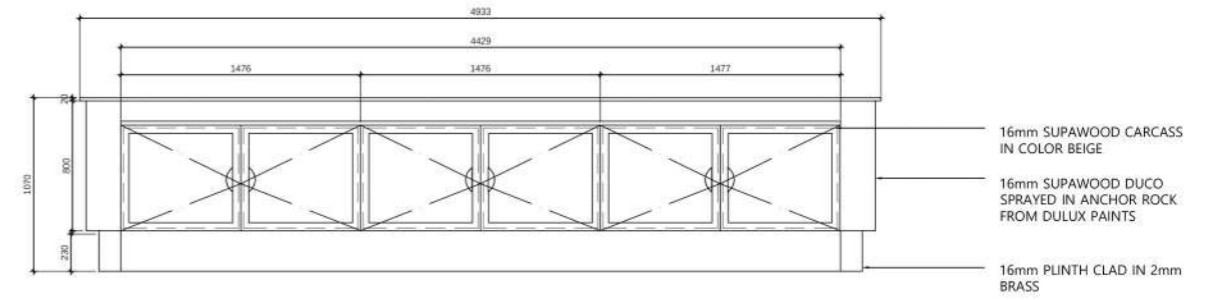


Ihom Aib luxury hotel floor plan

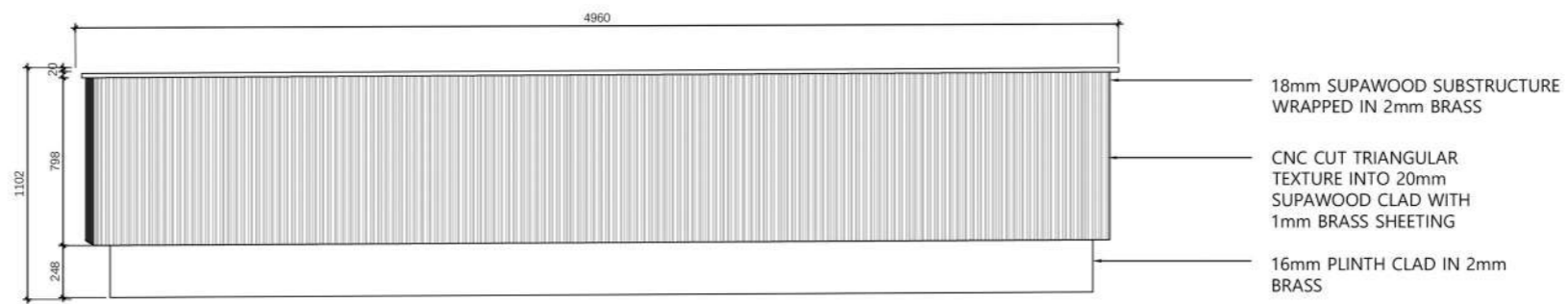
NTS



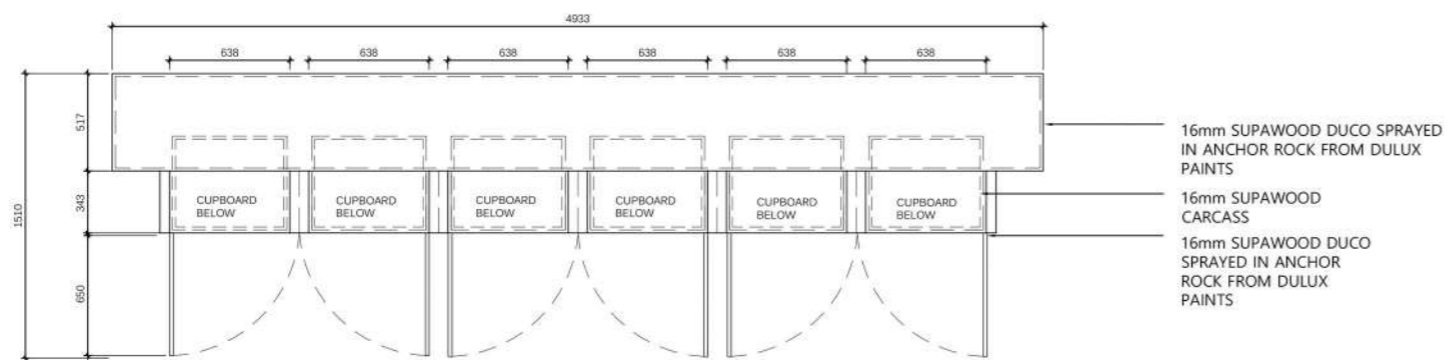
BAR ELEVATION AA  
NTS



BAR ELEVATION BB  
NTS



BAR ELEVATION CC  
NTS



BAR ELEVATION DD  
NTS



BAR DETAIL  
NTS

!hom Aib bar joinery





\ae\\gams bar



Gaokhen restaurant

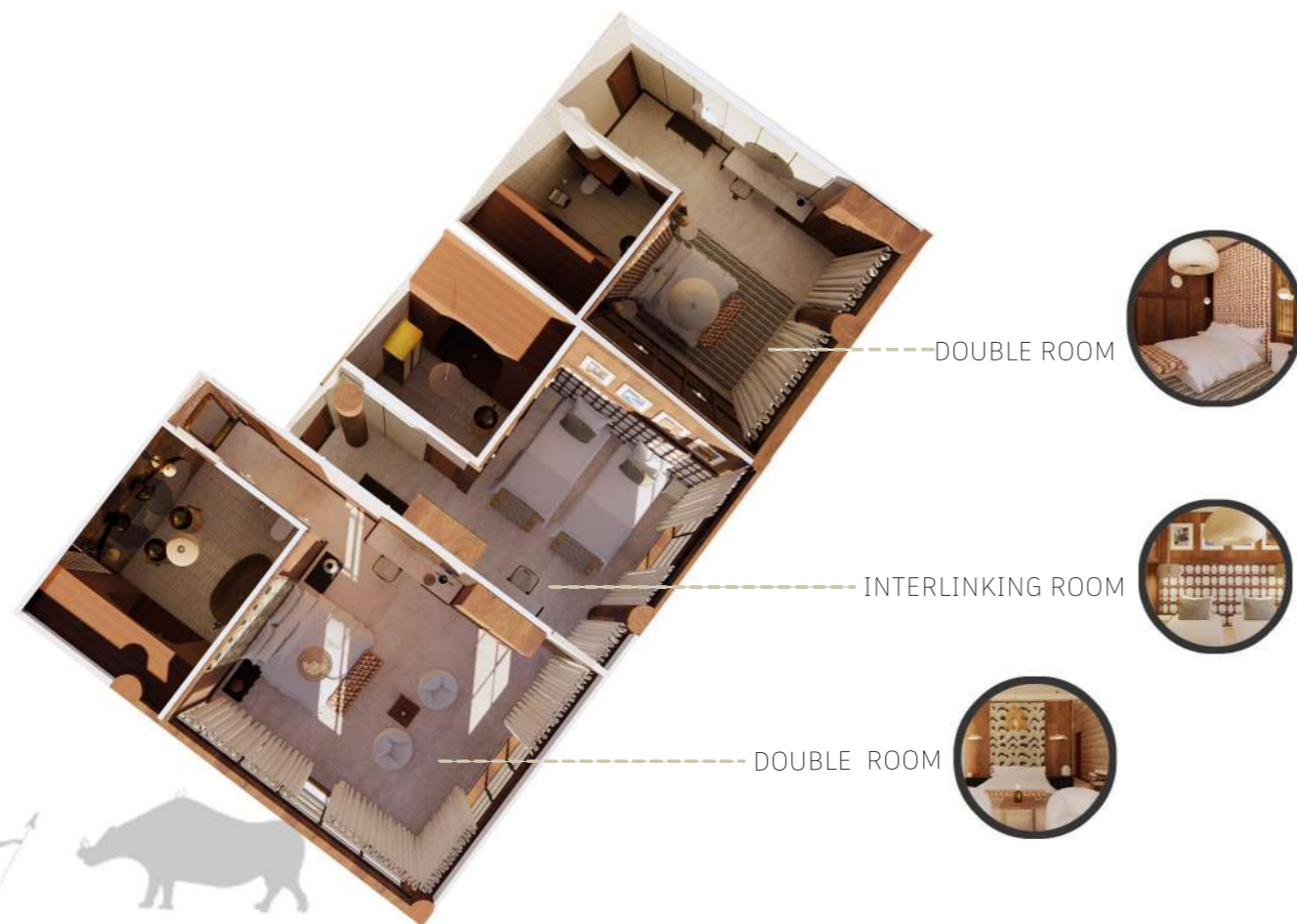




!hom Aib double room

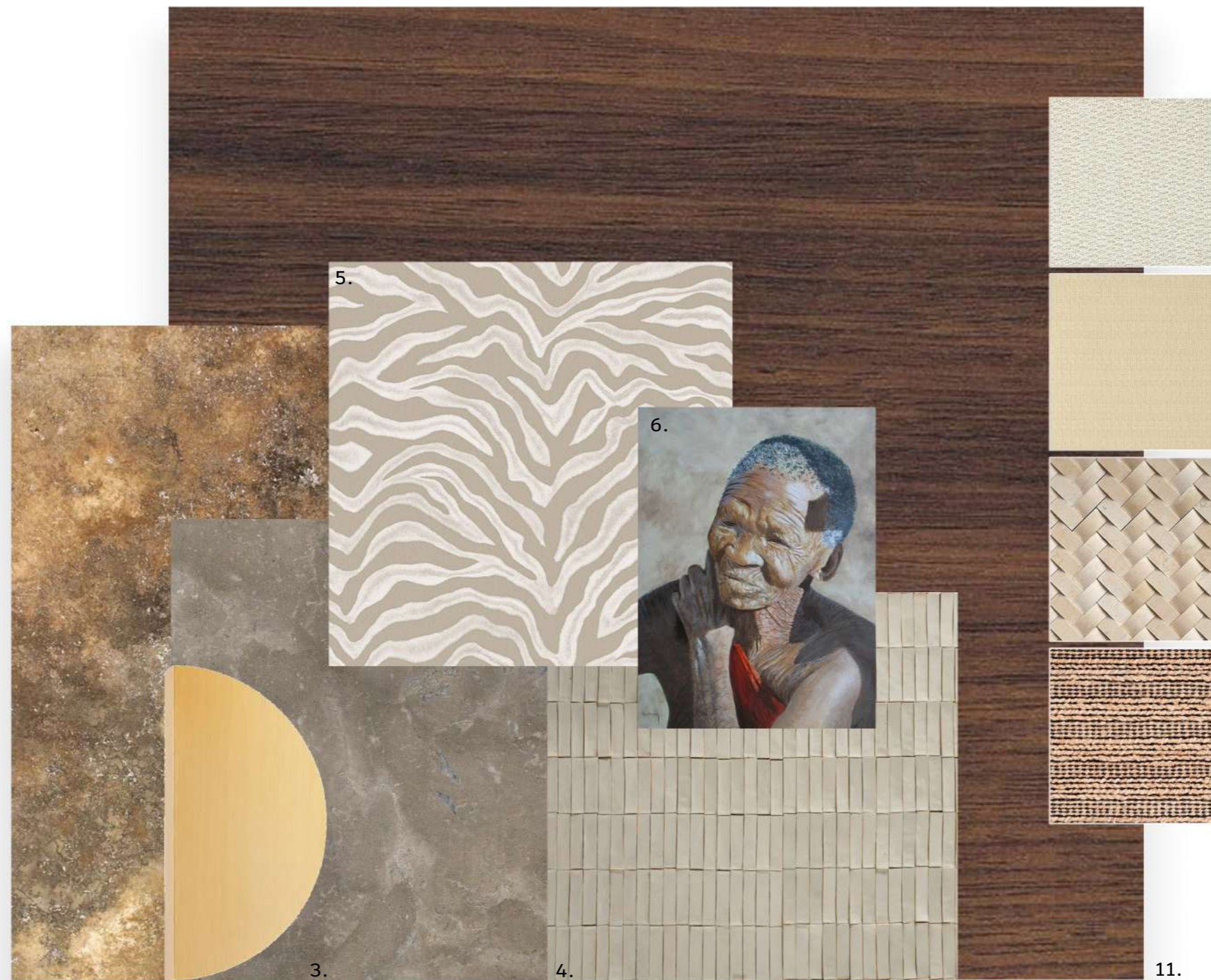
!hom Aib double room bathroom

!hom Aib interlinking room



1. ALLIED MAKER CERAMIC WALL SCONCE 2. WAVES BY GALBRIATH & PAUL 3. KURU ART 4. ANTONYM BY BOTTEGA INTRECCIO 5. MIRAGE BY CAPITAL COLLECTION 6. BB.8 BY SPHAUS 7. THE RUG COMPANY- STRIPE RUG





1. BRONZE ANTIQUE MIRROR CAPE MIRRORS 2. HALF MOON HANDLE LEROY MERLIN 3. KOROS GREY WOMAG 5. ZEBRA PRINT WALLPAPER MAVROMAC 6. RON WALDECK PAINTING 7. SCHAAP MAVROMAC 8. OFFWHITE RATTAN MAVROMAC 9. WOVEN LEATHER WOODHEADS IN LATTE 10. BLACK AND WHITE JUTE TEXTURED WALLPAPER MAVROMAC 11. WALNUT OGGIE HARD WOOD FLOORING

!hom Aib luxury hotel materials board



!hom Aib double room

## CONCEPT

The rebirth of the South African National Assembly represents an opportunity both to pay homage to the history of the South African people and to look forward to a thriving future. The National Assembly embodies the tenets of an Afro futuristic cultural movement – the freedoms of a diverse people and their will to rise to new beginnings. Eleven pillars stand tall to represent the official languages of our nation; just as all our country's people rise to and beyond the feats of our ancestors.





IN HOUSE TOP 5 CANDIDATE FOR  
CAESARSTONE STUDENT DESIGNER  
COMPETITION



National Assembly exterior



National Assembly site plan

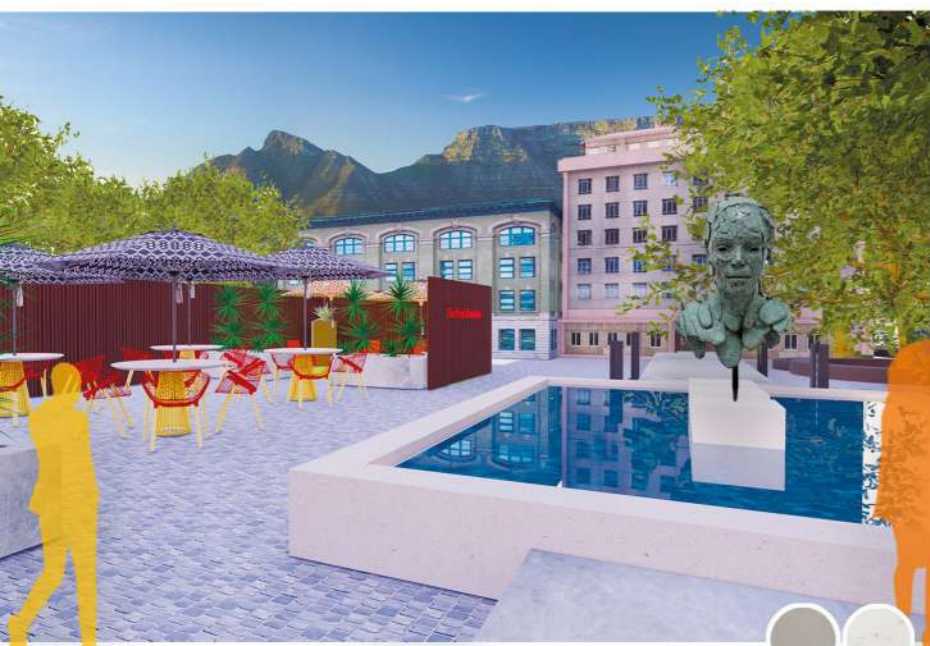


National Assembly site plan



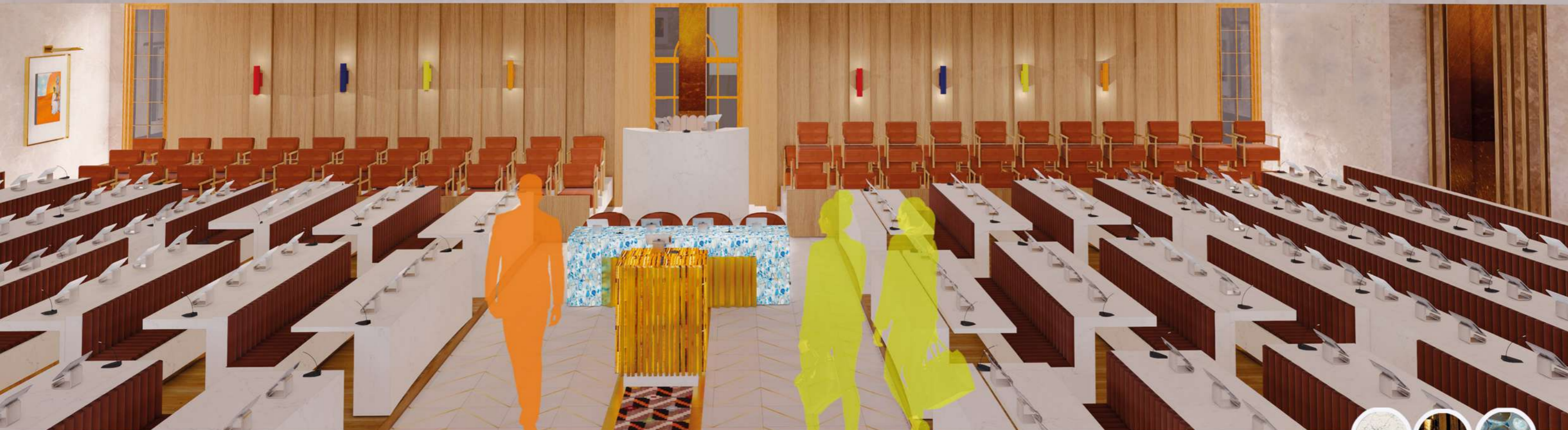
National Assembly site plan



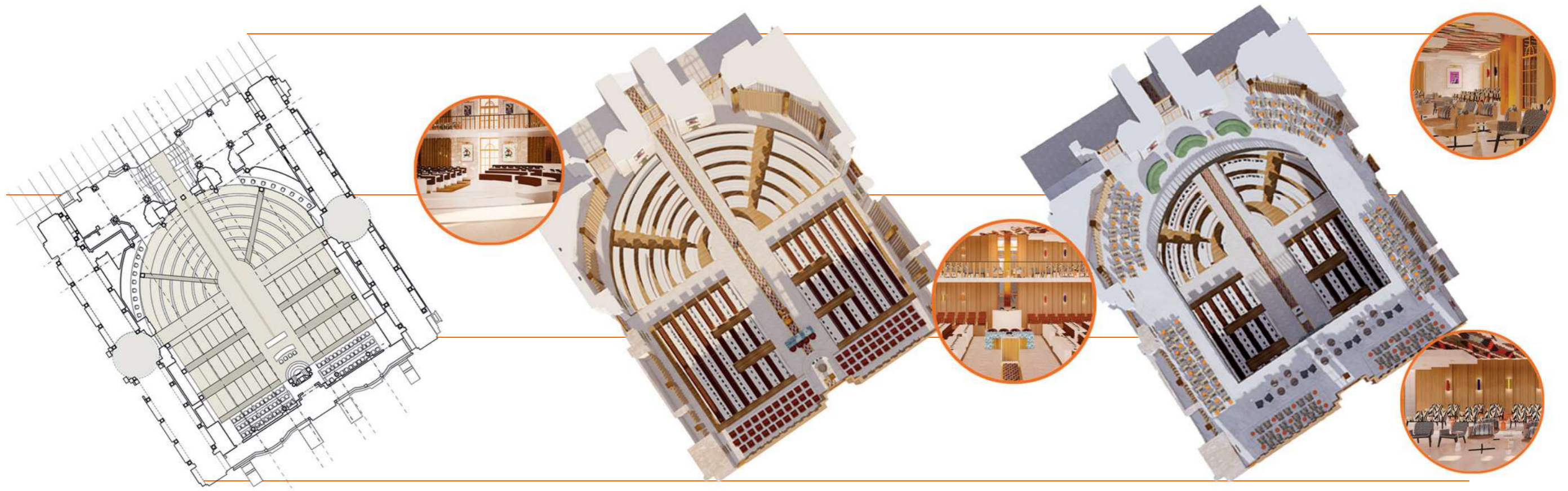


National Assembly exterior





National Assembly interior



National Assembly floor plan  
NTS

National Assembly ground floor

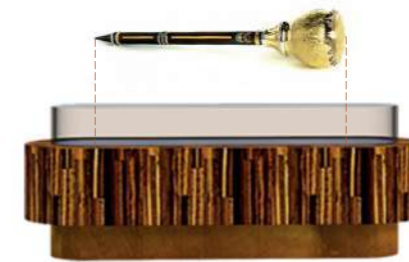
National Assembly first floor



Desk in National Assembly



Podium



Mace display





Podium in National Assembly



National Assembly exit



First floor seating



**South African designer- Laduma Ngxokolo** is the founder of the luxury African knitwear brand. He designed with the intention for the knitwear to be suitable to wear at Xhosa initiates as well as for the knitwear to be modern inspired by the Xhosa patterns. I have decided to use his pattern design throughout my design in the form of printed vinyl.



National Assembly exterior



## CONCEPT

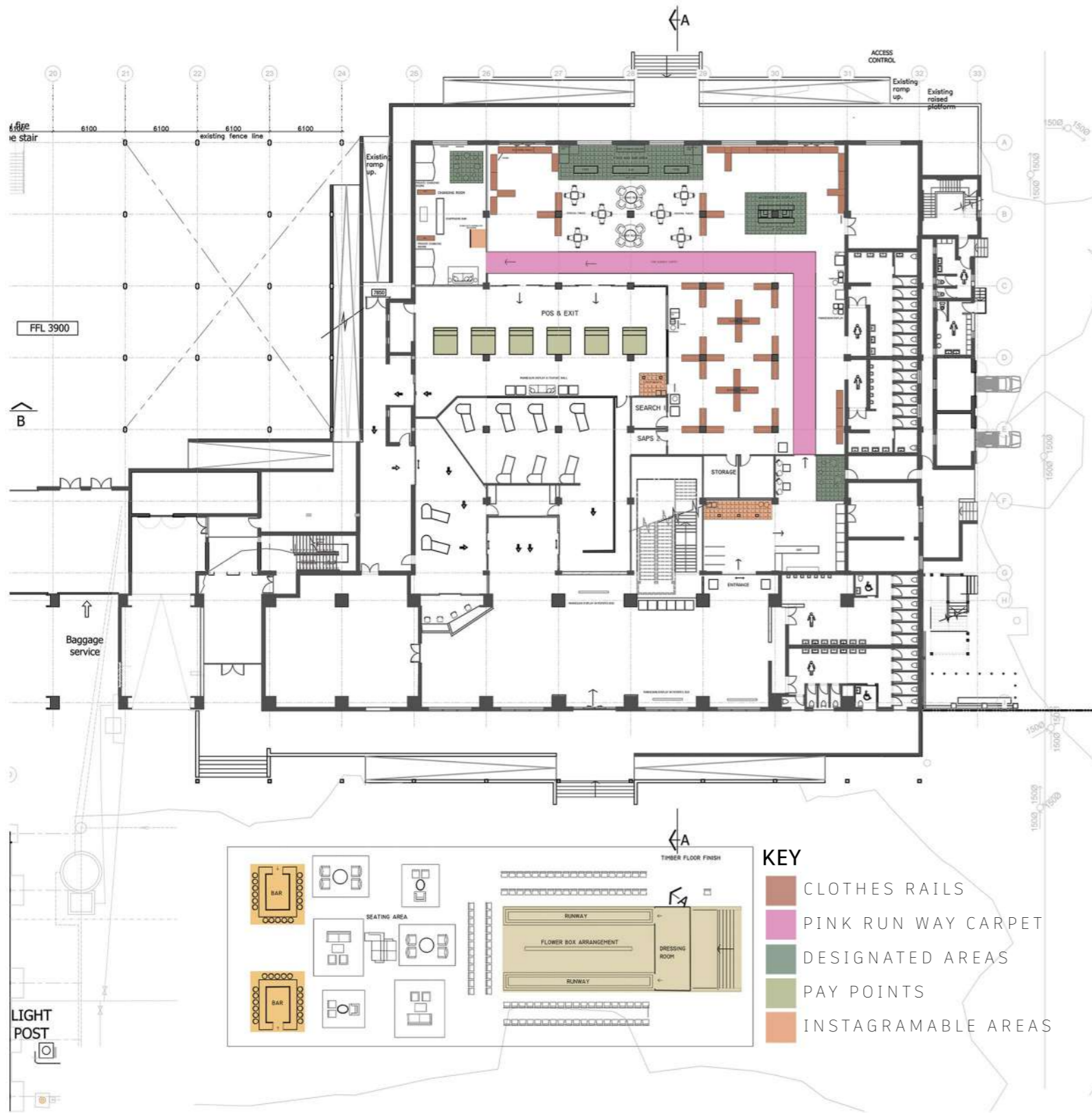
THE VINTAGE WITH LOVE SALE IS BACK

Group Project- Winning Team

The Vintage with Love annual makers landing market will epitomize industrial chic interior and atmosphere while retaining the beautiful clothing as the star of the show. Pops of color, glam bar areas, instagrammable moments and bare mannequins granting the eye to fantasize and wonder allowing the clothing to speak for themselves



Vintage with love entrance



Vintage with Love floor plan  
NTS





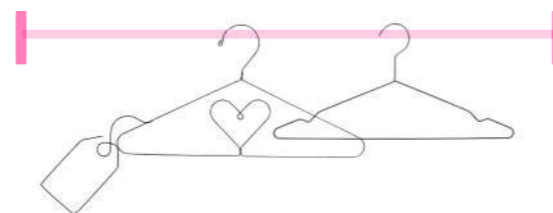
Vintage with love photobooth



Vintage with love welcoming drinks station



Vintage with love dressing room





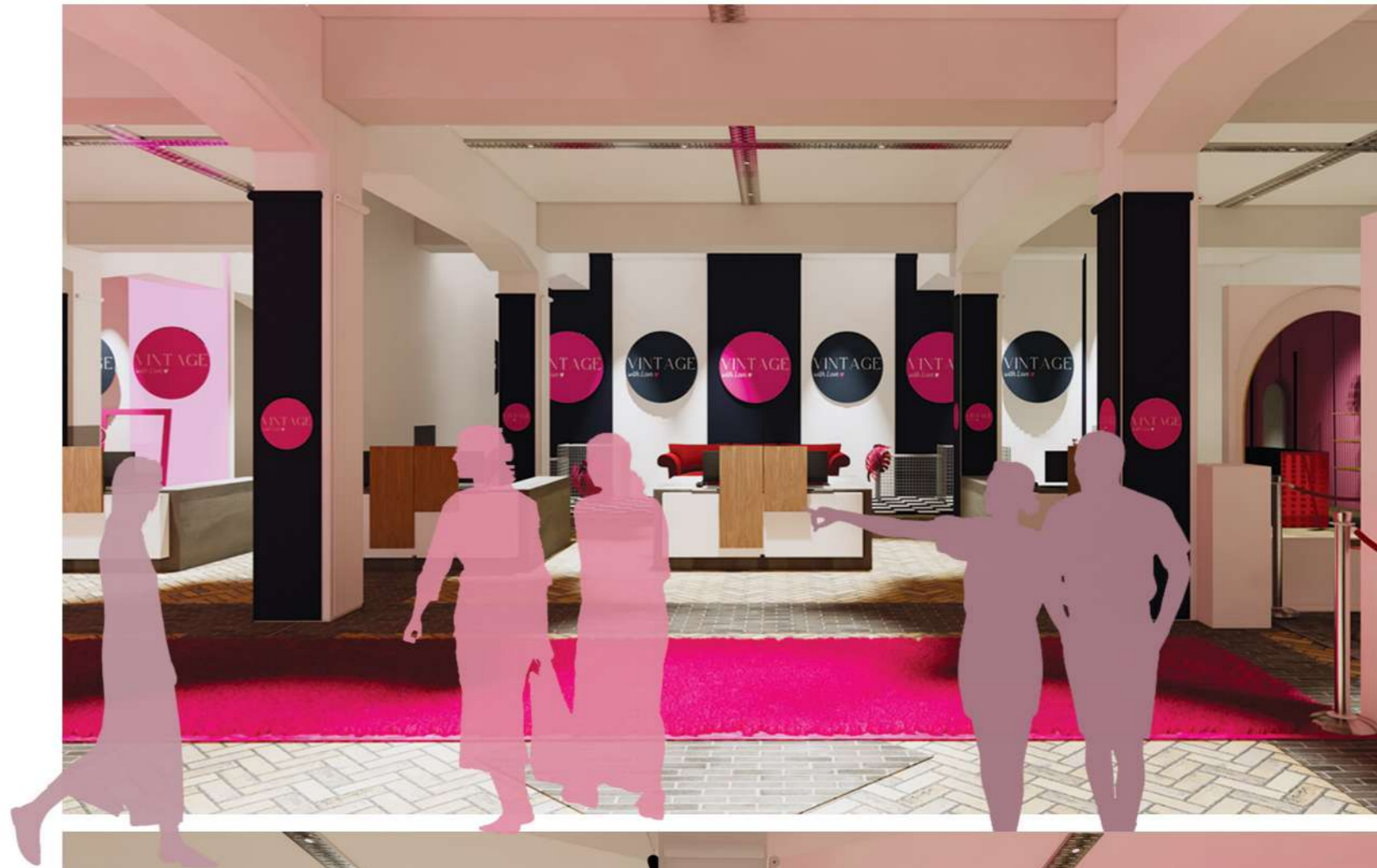


Vintage with love shopping area



Vintage with love drinks & food bar

Vintage with love pay point and exit



Vintage with love photobooth in dressing room

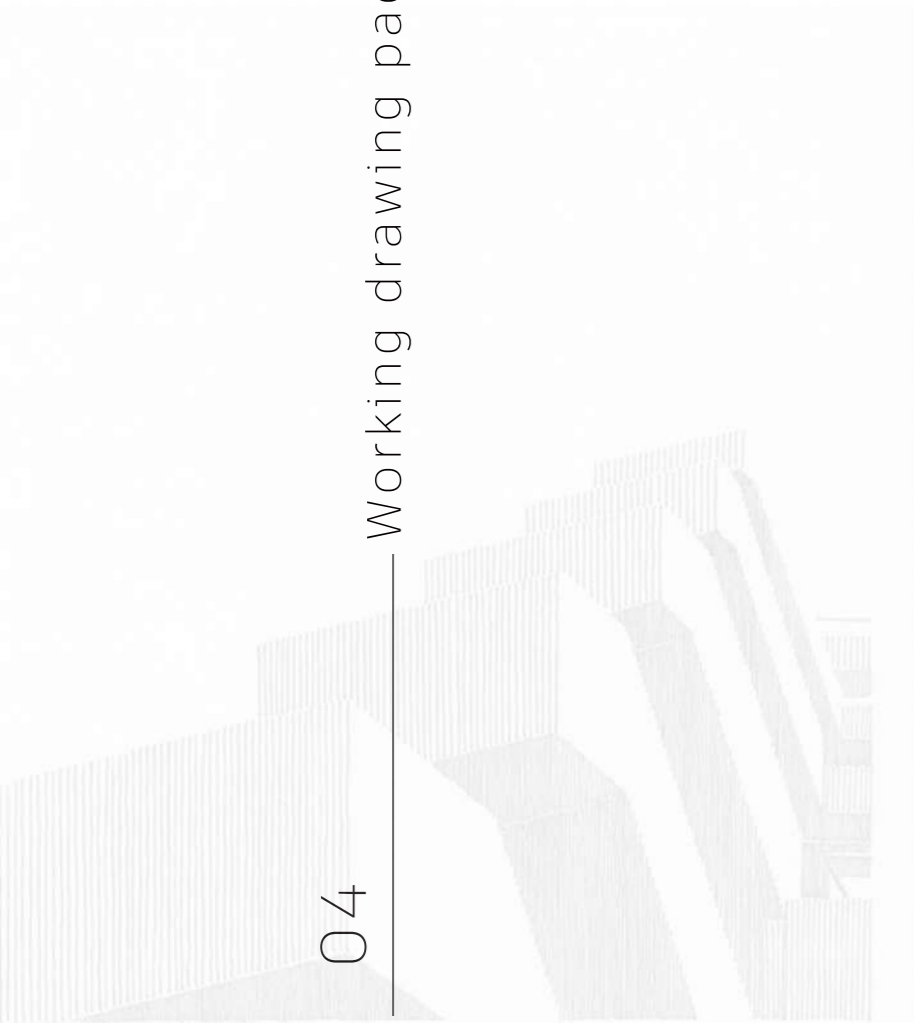


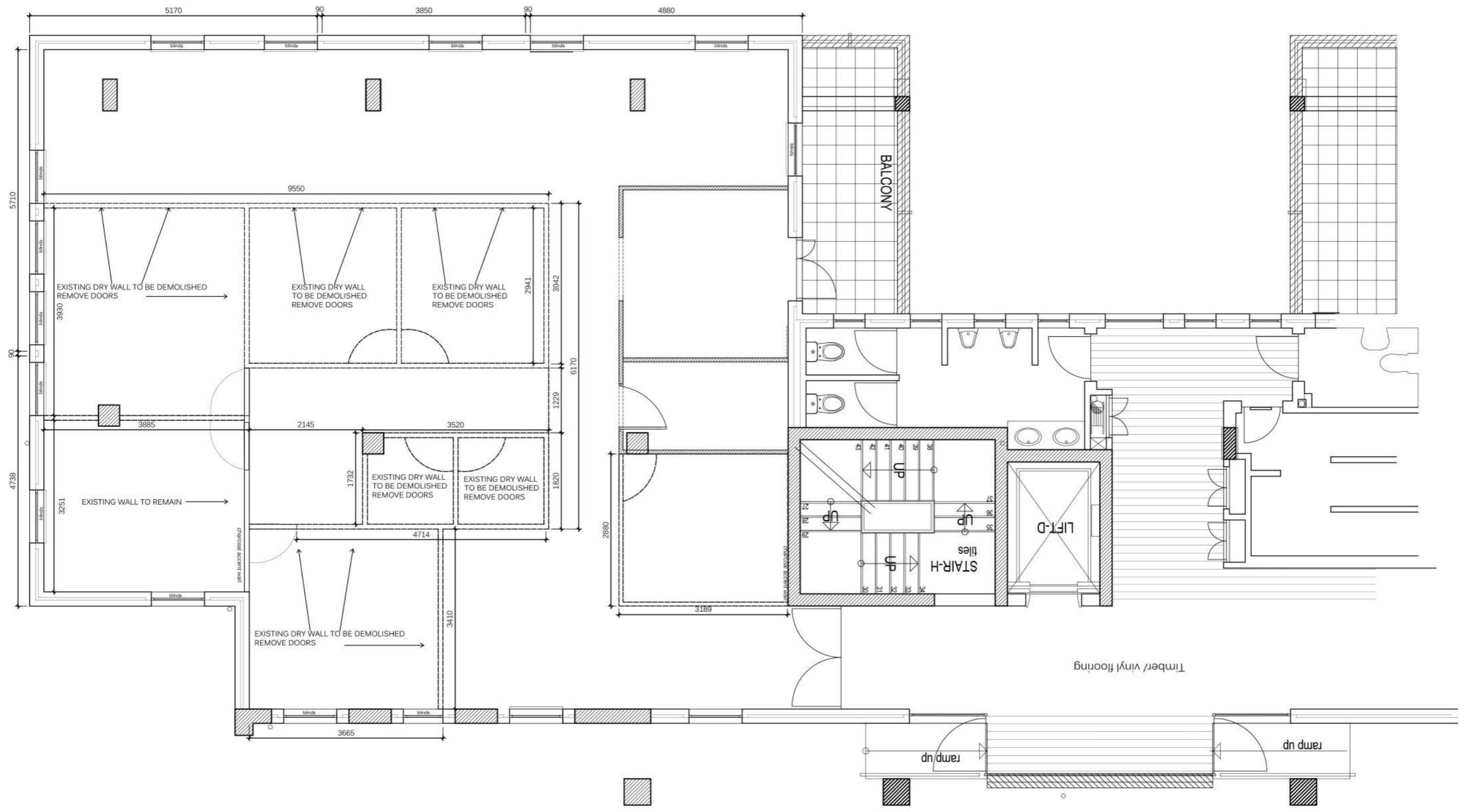


Vintage with love photobooth at exit point

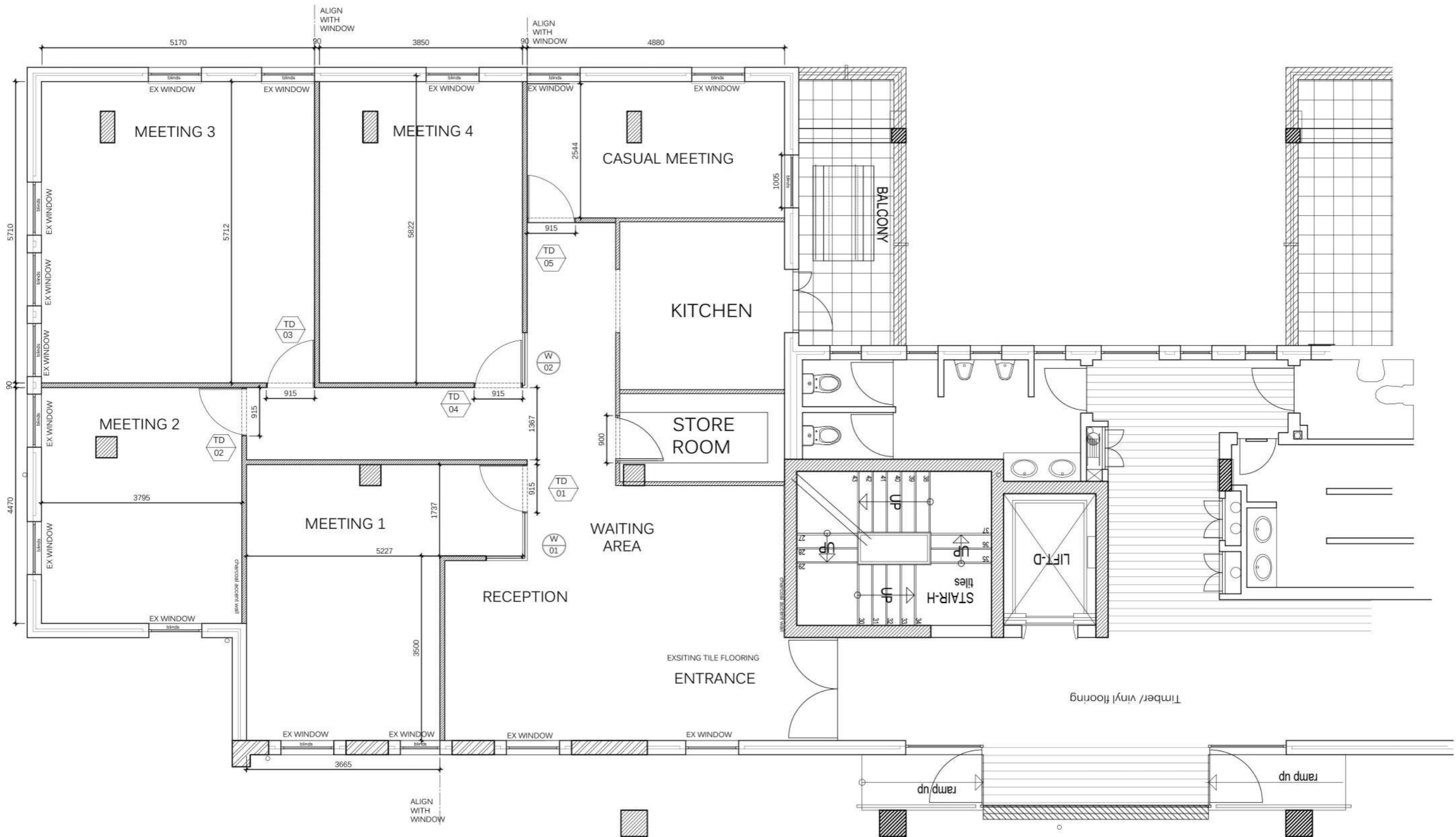
04

Working drawing package





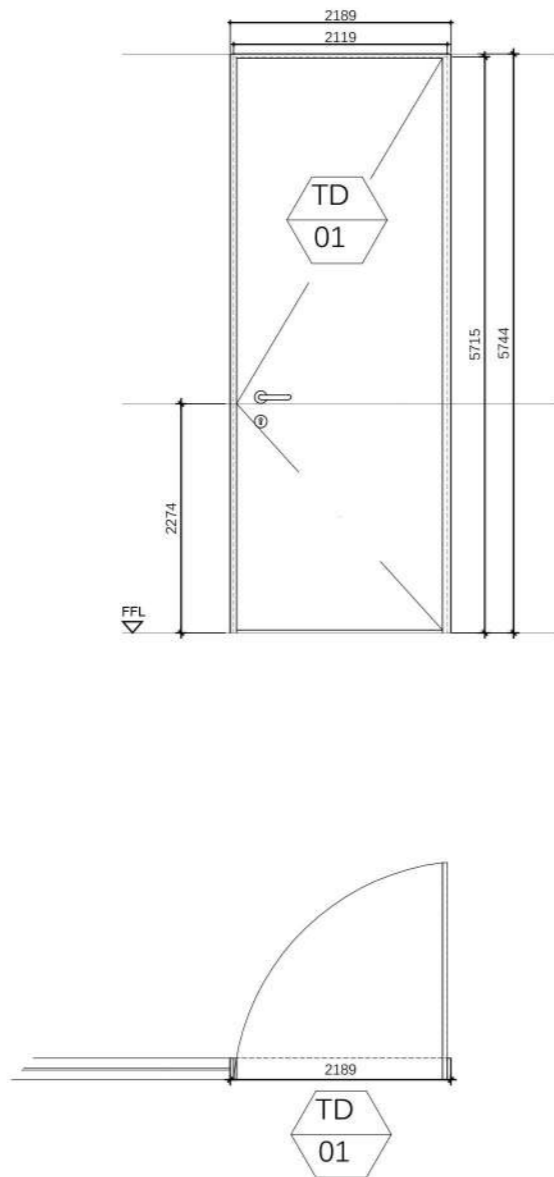
Demolition plan  
1:100



New build plan

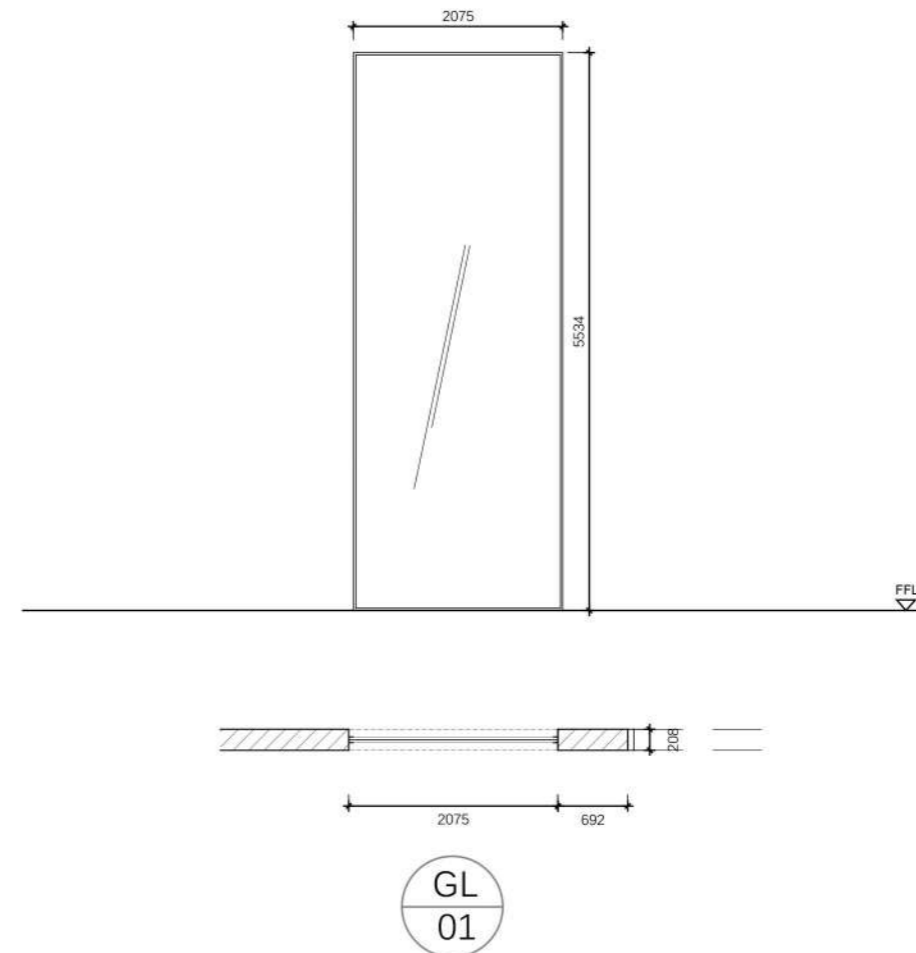
1:100

### GLASS PANE DOOR SCHEDULE



DOOR TYPE	DOOR NUMBERS	TOTAL
<b>A</b>	BASEMENT LEVEL N/A	0
	GROUND FLOOR TD01 , TD02 , TD03 , TD04 , TD05	5
	FIRST FLOOR N/A	0
	<b>Description</b>	FULL PANE GLASS SINGLE DOOR WITH BLACK POWDER COATED FRAME INTEGRATED INTO DRYWALL
<b>Size</b>	AS DIMENSIONED _ CHECK ON SITE	
<b>Glazing</b>	10mm CLEAR TOUGHENED SAFETY GLASS	
<b>Ironmongery</b>	BUILDER TO ALLOW PC OF R500 FOR DOUBLE SIDED HANDLE SET AND KEY HOLE COMBINATION. HINGES AS PER BUILDER SPEC.	
<b>Notes and special conditions</b>	HANDLES MOUNTED AS PER MANUFACTURER OPENING SIZE TO BE CHECKED ON SITE BEFORE INSTALLATION	

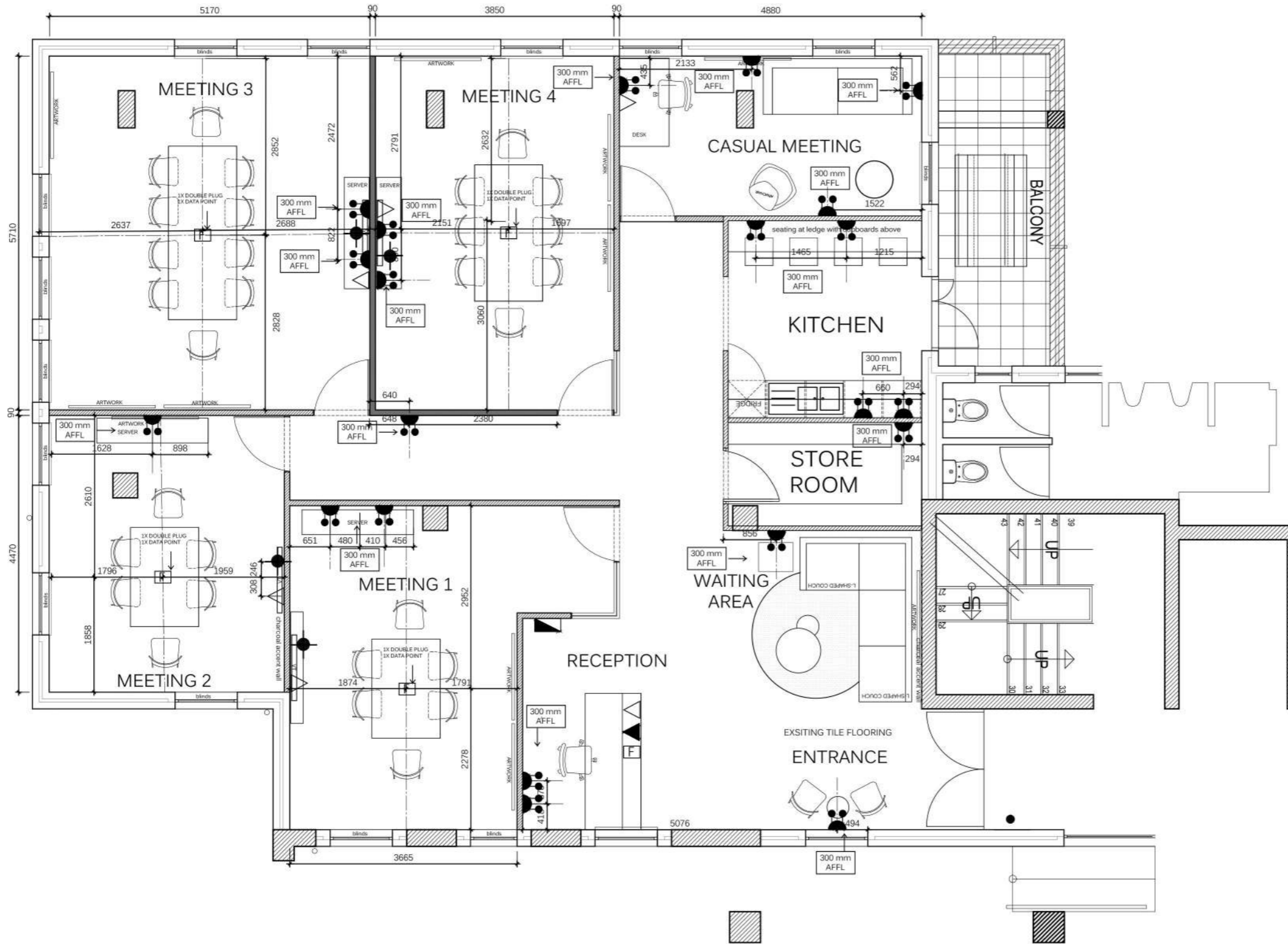
### FRAMELESS GLASS WINDOW SCHEDULE



WINDOW TYPE	WINDOW NUMBERS	TOTAL
<b>C</b>	BASEMENT LEVEL N/A	0
	GROUND FLOOR GL01 , GL02	2
	FIRST FLOOR N/A	0
<b>Description</b>	AS DIMENSIONED _ CHECK ON SITE	
<b>Size</b>	4mm CLEAR FLOAT GLASS AS PER NBR ALL FRAMES TO BE POWER COATED BLACK	
<b>Glazing</b>	10MM BLACK POWDER COATED ALUMINUM FRAME AS PER BUILDER SPEC .	
<b>Notes and special conditions</b>		

Window & Door schedule

1:100



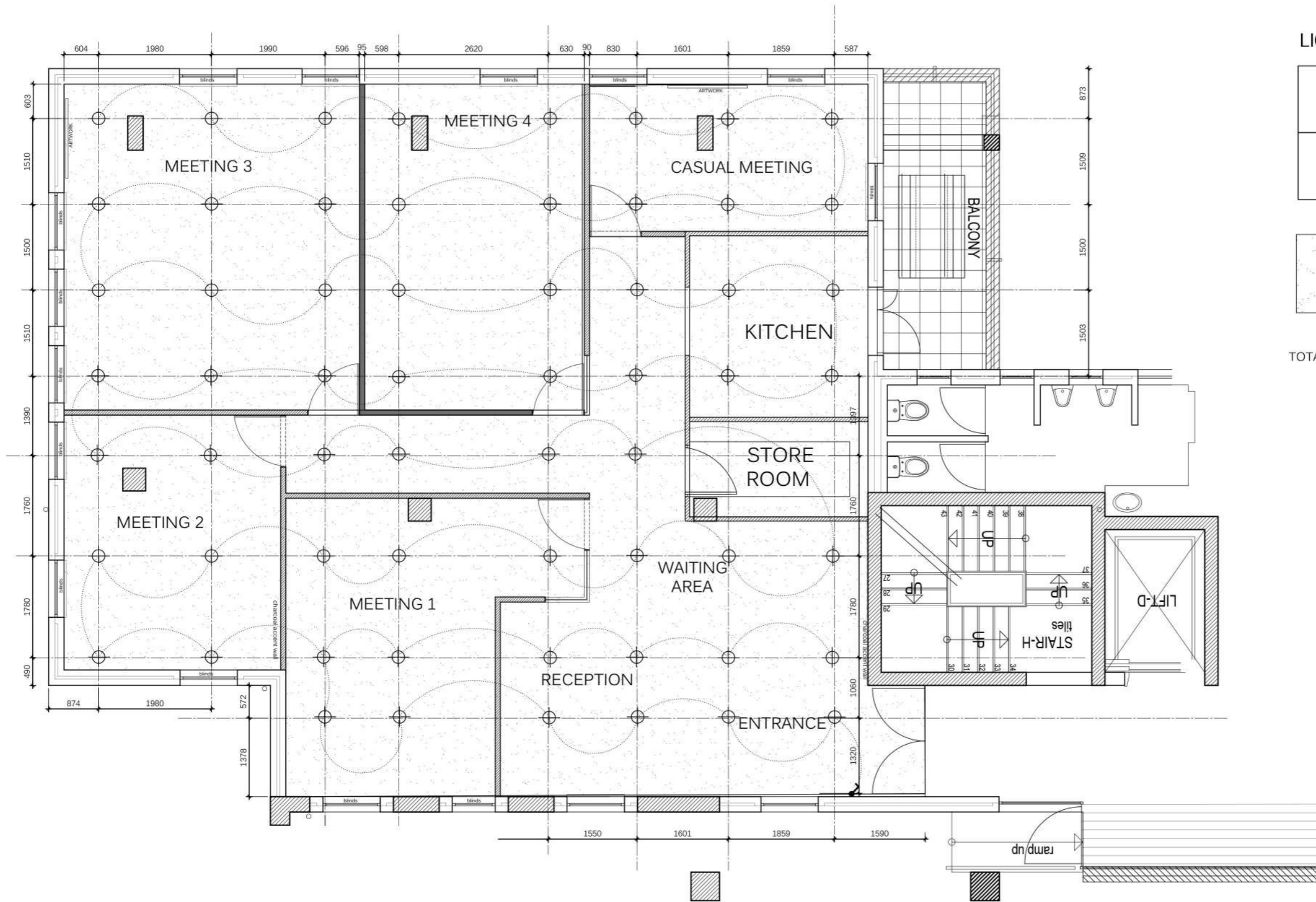
**ELECTRICAL OUTLET LEGEND:**

	Electrical Distribution Board
	16A Due Switched Socket
	Data Point
	Telephone Point
	TV antenna point (4 in total)
	Bell at front entrance with motion sensor
	100mm x 100mm Floor box as per spec

Electrical Layout of new office

1:100





**LIGHTING LEGEND:**

⊕	Aluminum downlight 72V 50W tilt <i>Leroy Merlin</i>
⤵	Switch Spec: Major Vetri VS 111BK One way switch with indicator ( socket switch- black) Glo lighting


 SKIMMED AND PAINTED PLASTERBOARD  
 CEILINGS WITH 25mm DONN PLASTERBOARD  
 TRIM ALL ROUND. PAINTED WHITE

TOTAL SQUARE METER **163M<sup>2</sup>**

Lighting Layout of new office

1:100

## CONCEPT

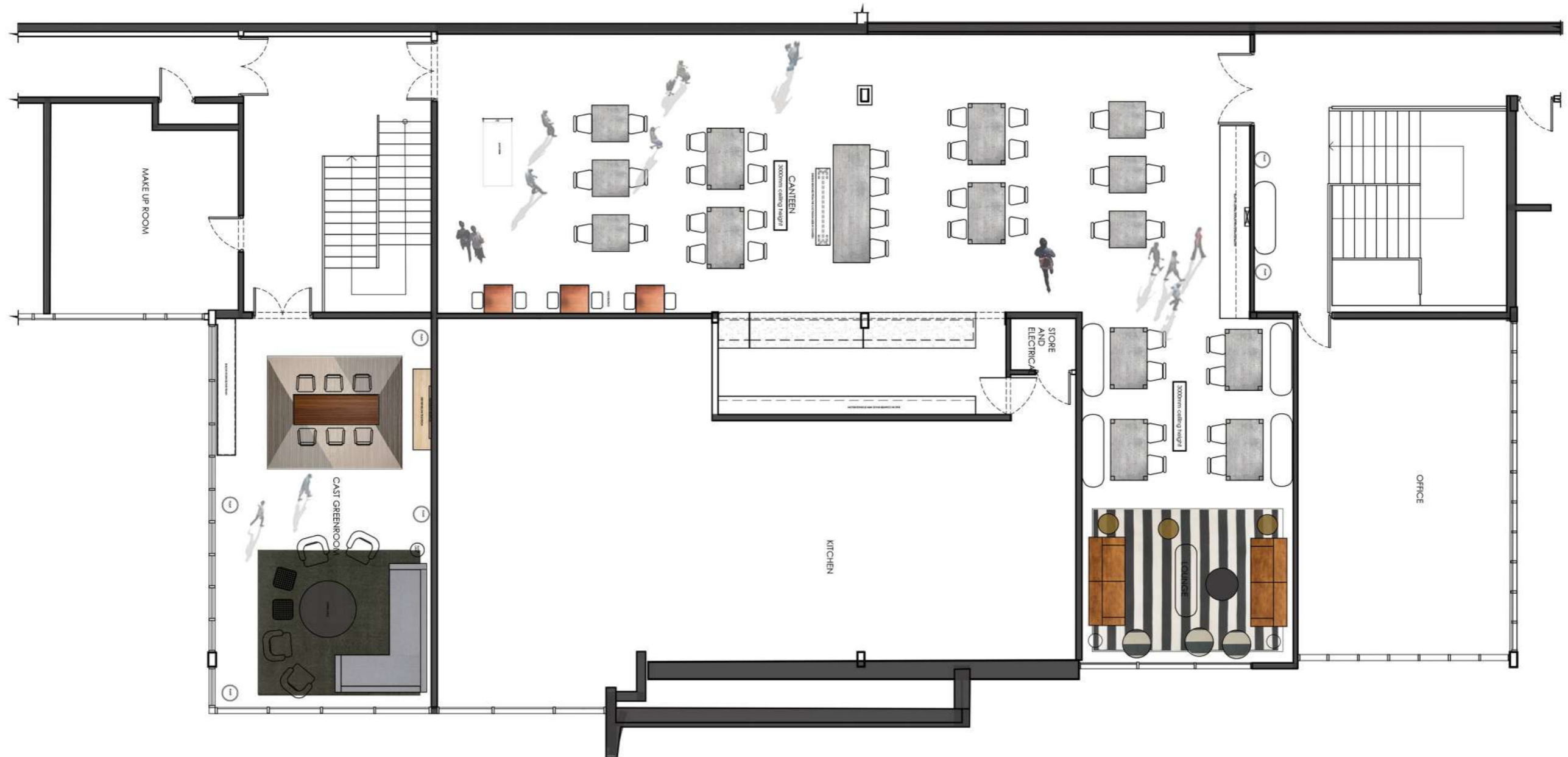
The concept is based on vintage and retro style, however as the project grew I decided to combine the retro vintage style along with a modern style. The space is styled with wallpaper to create feature walls with colour painted walls to enhance the already beautiful wallpaper I used in these spaces. I also paid attention to the ceiling choosing to not add colour but rather add texture to it. Another important concept for me as a designer is to always include various textures and materials. This done by adding rugs to the spaces, upholstery, scatter cushions, blinds or curtains. It is also important to consider lighting as it adds to a room, lights create warmth and ambience.



Goodhood canteen



Goodhood canteen



Atlantic Studios canteen & cast room floor plan  
NTS



Goodhood slow lounge

CANTEEN FURNITURE SELECTION



1. AIRLOOM JAILBIRD RUG 2. KNUS UNITY GOLD PENDANT LIGHT 3. INCANDA FURNITURE SAHARA STOOL 4. TABLE TOP FURNITURE INDUSTRIAL VINTAGE DINING CHAIR 5. HOUTLANDER DINER BENCH IN OAK

CANTEEN & LOUNGE MATERIALS BOARD



1. ROBIN SPRONG PROTEA COMBO BLACK & WHITE WALLPAPER 2. CARA SAVEN GEUSS WHO- WALLPAPER 3. HERTEX FABRICS IN NOLA DESERT 4. HERTEX FABRICS COPENHAGEN GRAPHITE 5. RAREWOODS TIMBER IN BAMBOO 6. TABLE TOP FURNITURE COPPER COUNTERTOPS 7. BRASS HANDLES FROM HANDLESINC 8. TABLE TOP FURNITURE WERZALIT COUNTERTOPS IN CEMENT 9. TABLE TOP FURNITURE ALL PURPOSE COUNTERTOPS IN SMOOTH SPECKED SM09

LOUNGE AREA FURNITURE SELECTION



1. AIRLOOM JAILBIRD RUG 2. CLEO PEDESTAL BLACK & CLEAR FLOOR LAMP FROM LIGHTING.CO.ZA 3. CORICRAFT MATISSE SIDE TABLE 4. INCANDA FURNITURE HAMLET COUCH IN GINGER 5. THE SOFA COMPANY OTTOMAN 6. SIXTH FLOOR EMERALD GREEN BENCH



CAST ROOM FURNITURE SELECTION & MATERIALS BOARD



1. BJORN BLACK FLOOR LAMP SIXTH FLOOR 2. HERTEX RUGS DASH RUG IN IVY 3. THULA VOKE RUGS 4. PILL MIRROR CORICRAFT 5. HOUTLANDER SERVER IN OAK 6. KNUS LEATHER OTTOMAN 7. HOUTLANDER TABLE 8. CARMEN CHAIR FROM 11 PAST



1.ROBIN SPRONG RUBBERY LEAF WALLPAPER 2. HERTEX FABRICS IN EXCITE DOVE 3. HERTEX FABRICS RECKLESS CACCOON 4. RAREWOODS OAK TIMBER 5. RAREWOODS AMERICAN WALNUT TIMBER



## CONCEPT

### THE **GOLDEN** GLOBE

Inspired by the award ceremony called the 'The Golden Globe', the pendant light is created with a uniqueness to it as well as serving versatility for residential, commercial or retail spaces. Creating the perfect mood setting and ambiance all within a pendant light.



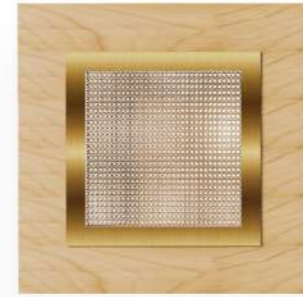


The Golden Globe pendant light

## CONCEPT

### Mia Stool

Upcycling what is known as the 'milk stool' to a stool that is functional yet appealing and aesthetically pleasing. I chose to use rattan and brass rods as additional material to the original stool. Once all of the changes were made to the original stool the Mia stool birthed. Which is now a stool with dimension and a bit of rustic touches with the added brass foot rest.



1. Rattan material 2. Pine timber 3. Brass detailing 4. Steel rod

The Mia stool

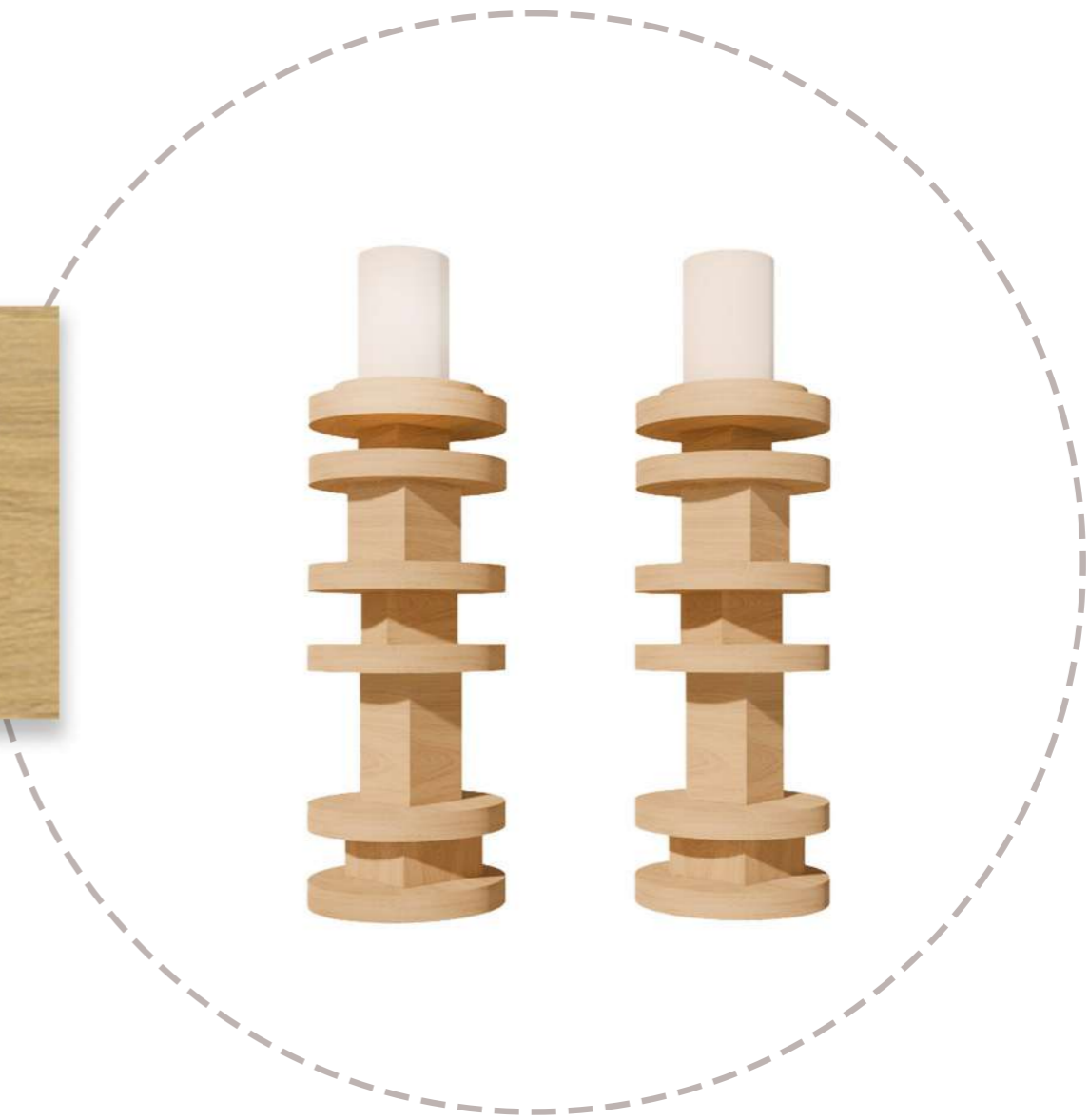
## CONCEPT

### Candlestick Holder

My inspiration for this candle holder stems from the shape of a coaster. It inspired me to play with a similar shape to that of coaster and adding dimension and depth by adding a different shape. The shapes also do vary in size adding more detail to the design.



Pine wood

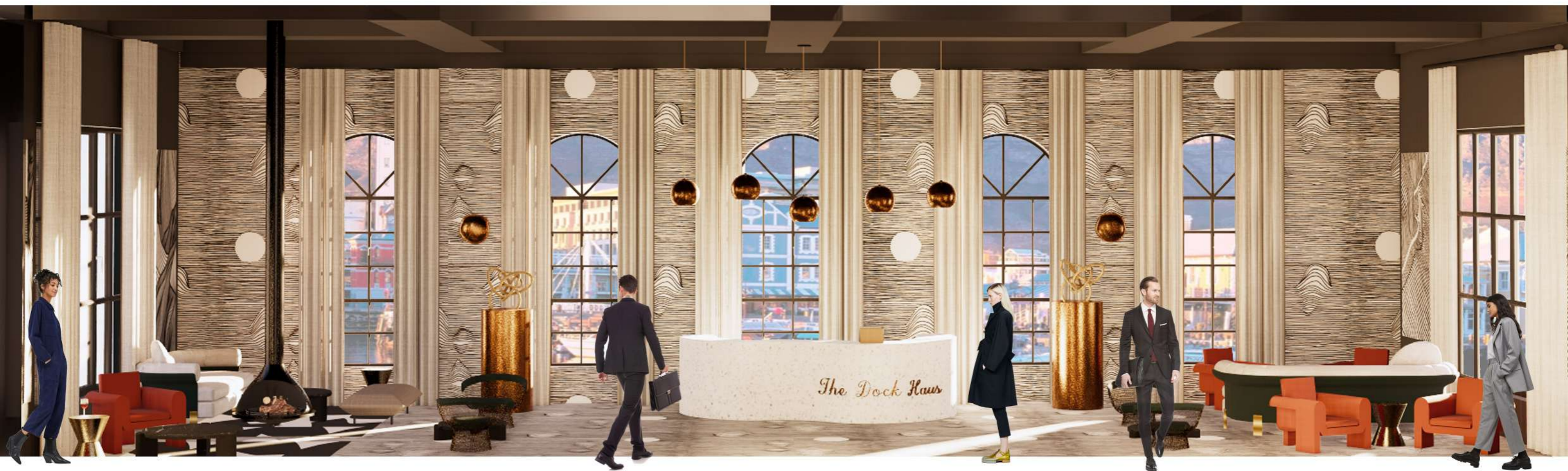


Ash candlestick holder

## CONCEPT

The Dock Haus inspired me to create a cozy space yet elegant and modern. Adding texture through use of wallpaper and materials pulls the space together with hints of color that breaks the pattern of the wallpaper and classic black and white checkered tiles. The aim was to create a classic lobby with elegance.

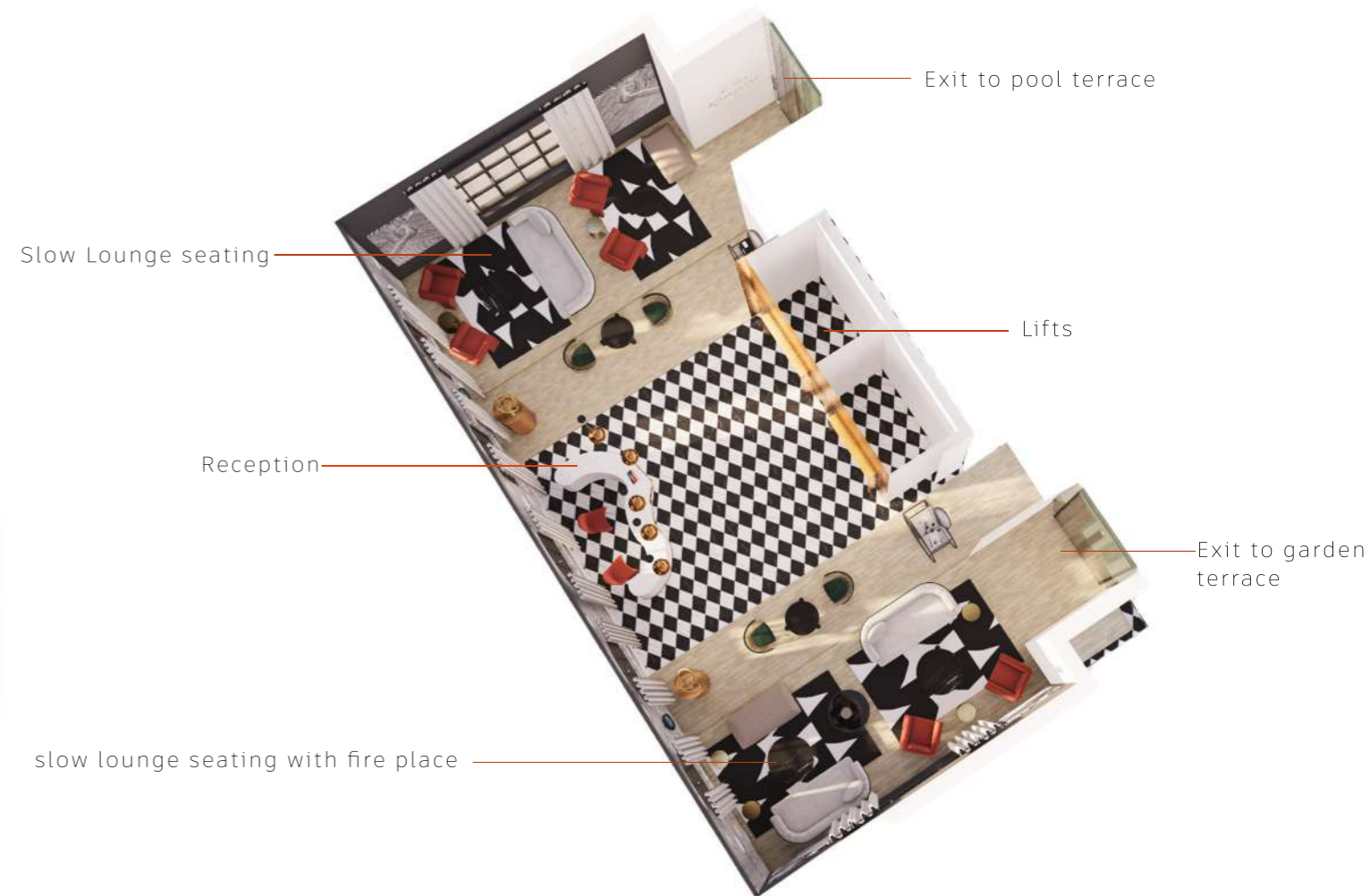




Dock Haus Reception & slow lounge



Dock Haus top view



Dock Haus Axo's





Dock Haus slow lounge





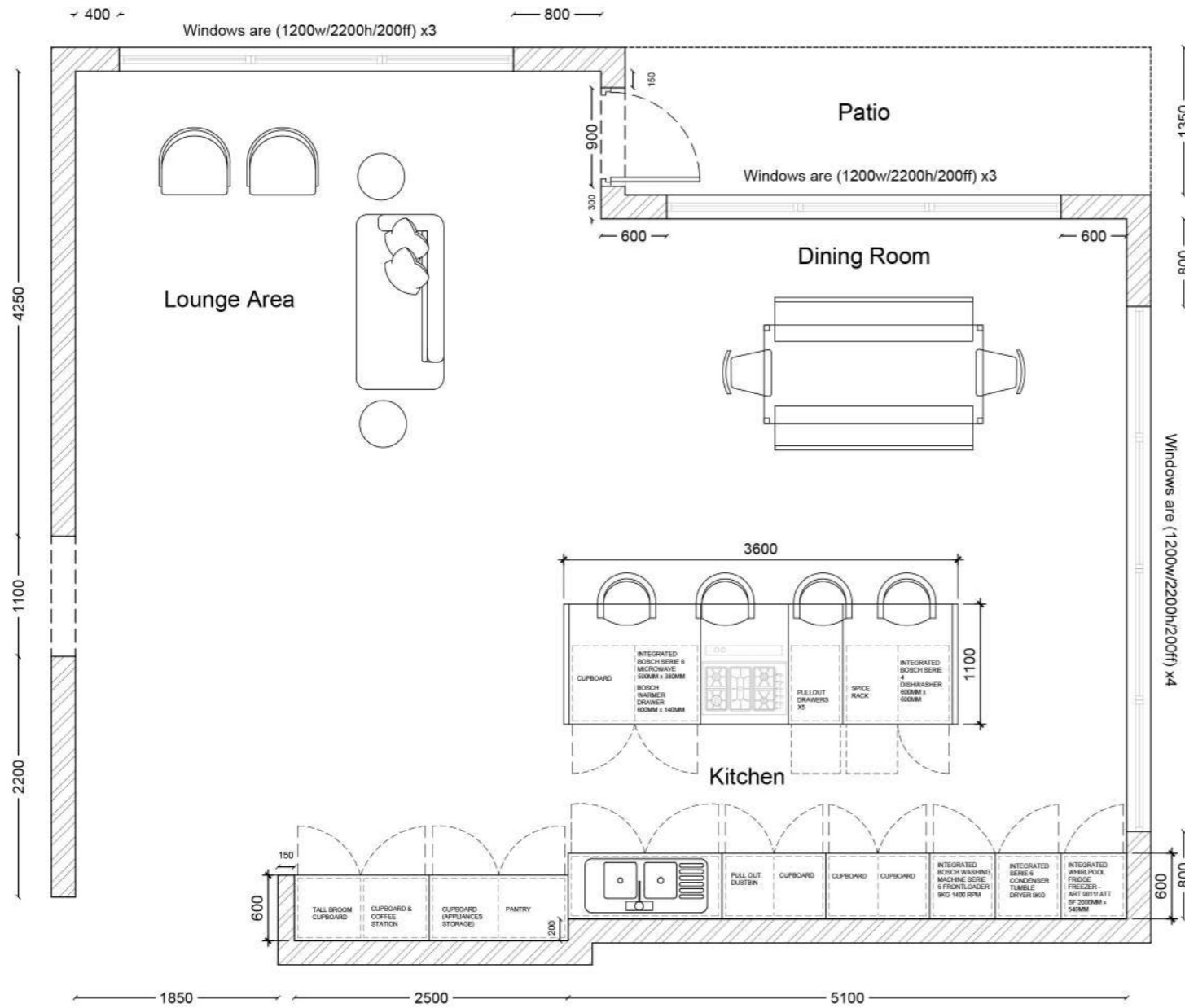
Dock Haus Reception

## CONCEPT

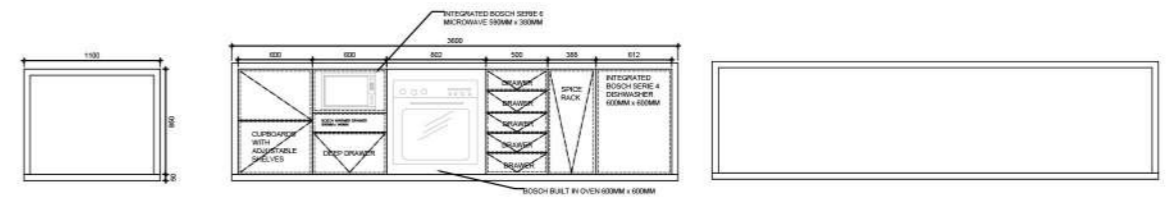
Tasked to design a sleek kitchen filled with the latest technology for a same sex couple. I equipped the kitchen with technology that enhances and eases the couple's day to day life. Ensuring that the interior is not forgotten. The kitchen design translates a masculine style softened with timber finishes and brass touches.

IN HOUSE TOP 5 CANDIDATE FOR  
CAESARSTONE STUDENT DESIGNER  
COMPETITION

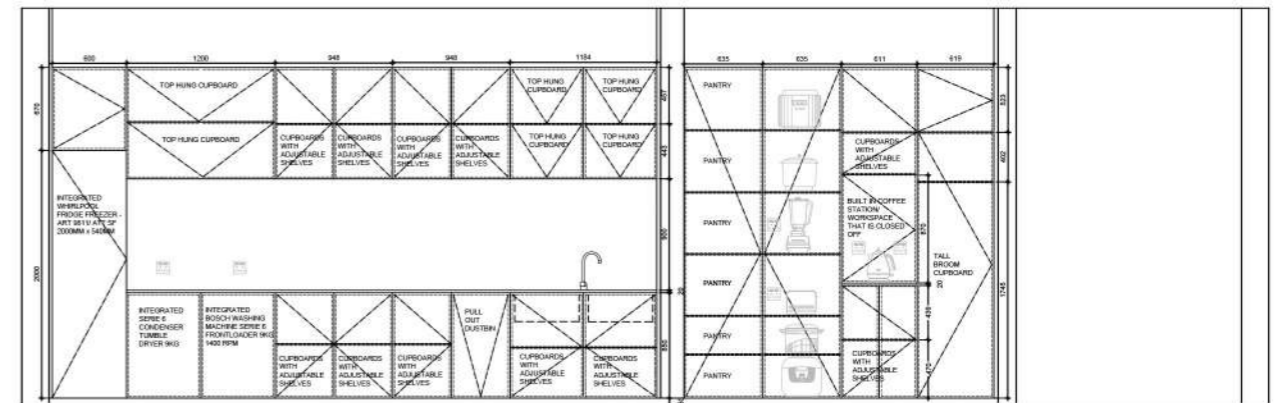




KSA kitchen design floor plan  
1:50



Elevation AA  
1:50



Elevation BB  
1:50



Kitchen Design axo- KSA



Kitchen Design- KSA

