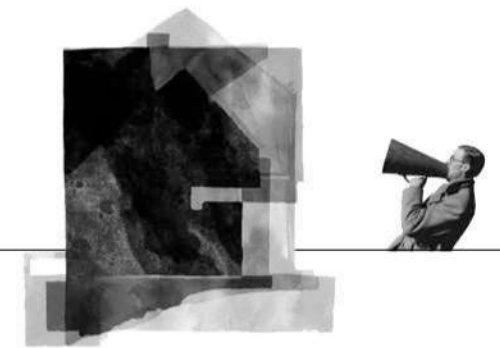


“Every great design
begins with an even
better story “

Lorinda Mamo, Designer

C

ONTENTS PAGE



01	The Shift - Hospitality (3rd position in class).....	01 to 19
02	Caesarstone - Competition (Top 5 in-house).....	20 to 28
03	Vintage with love - Commercial	29 to 33
04	KSA - Kitchen design	34 to 39
05	Atlantic Studios - Film Studio (2nd runner up).....	40 to 46
06	Ecology - Treehouse design.....	47 to 50

07	Co Create - Office design	51 to 56
08	LittleBig - Festival design	57 to 60
09	Hashi - Upcycle design	61 to 64
10	Cubic Chaos - Product design	65 to 67
11	Technicals	68 to 85

T

HE SHIFT

BRIEF

An existing plan of the second floor of 10 Searle Street Woodstock is to be converted into a new 5 star luxury holding hotel, the structure of which cannot be altered. i was given the freedom to design the internal layout and aesthetic with a limitless brief focused on the experience the clients would receive. From this luxurious holding hotel the clients would travel to their luxury pods which had to be located within four hours of the hotel.

CONCEPT

As humans expand and grow we develop environments to live in, whilst unfortunately destroying everything around us in the process. I wanted to create a space that celebrates its surroundings despite the mass destruction for both my hotel and luxury pods.



THE SHIFT - HOLDING HOTEL

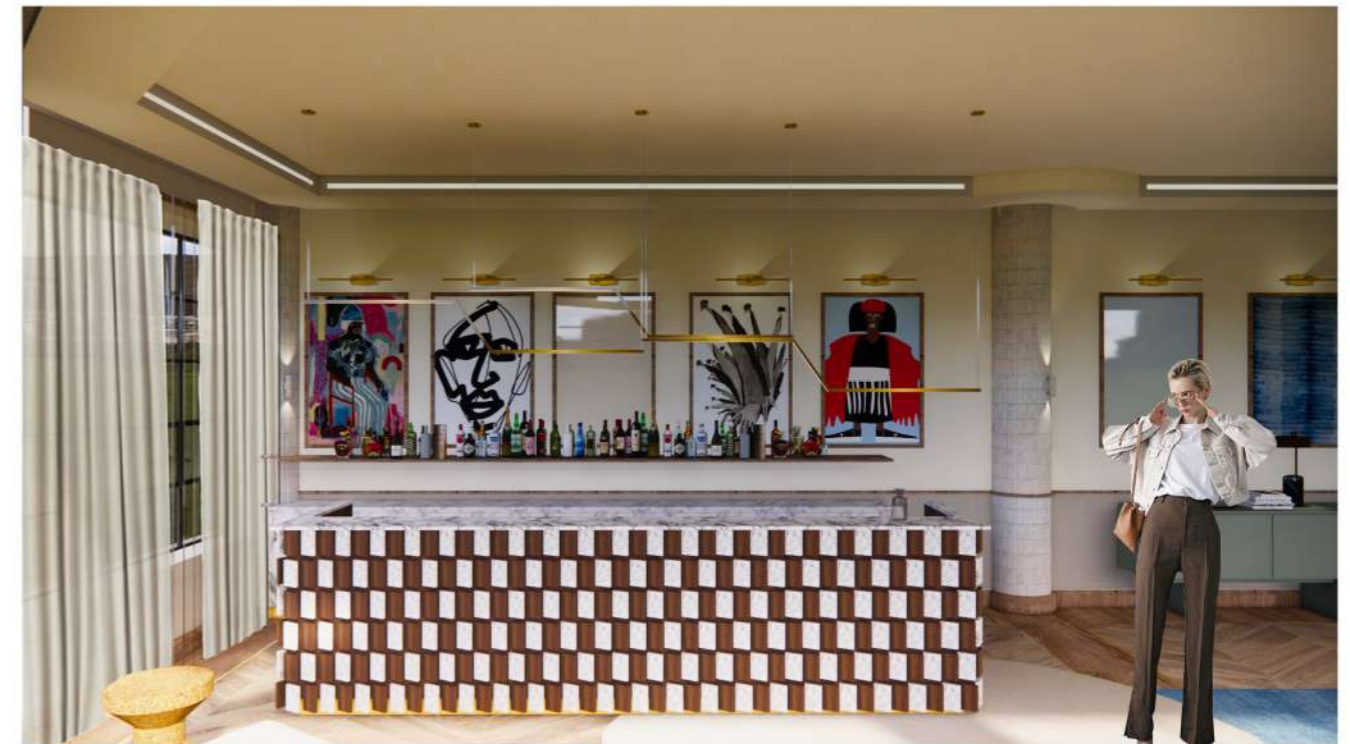
THE HOLDING HOTEL CELEBRATES ALL THINGS WOODSTOCK, IT IS VIBRANT, WILD, ALIVE AND EXCITING, LAYERED WITH LOCAL AND INTERNATIONAL BESPOKE FURNITURE PIECE SAND RICH MATERIALS FOLLOWING A MAXIMALIST APPROACH, WHICH IS A HUGE GLOBAL TREND AT THE MOMENT IN PERSONALIZING SPACES ESPECIALLY AMONGST THE "GEN Z" EVERY CORNER OF THE HOTEL IS AN INSTAGRAMABLE MOMENT, CREATING PERSONA FOR THE HOTEL. THE DESIGN OF MY HOTEL HOTEL (THE SHIFT) IS IN COMPLETE CONTRAST TO THAT OF THE LUXURY PODS.



FIRST IMPRESSION OF SLOW LOUNGE



RECEPTION WITH FEATURE KEY DETAILING



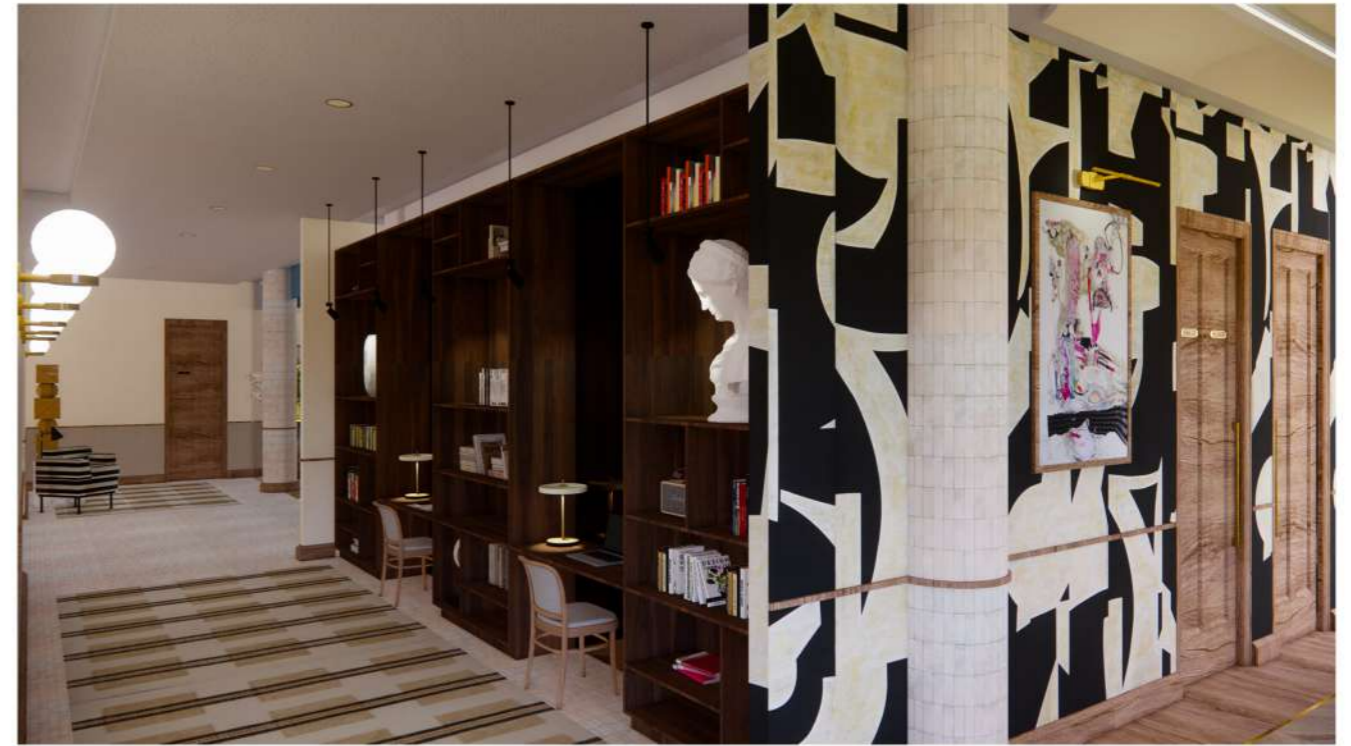
SLOW LOUNGE BAR DESIGN



FLOOR PLAN
NTS



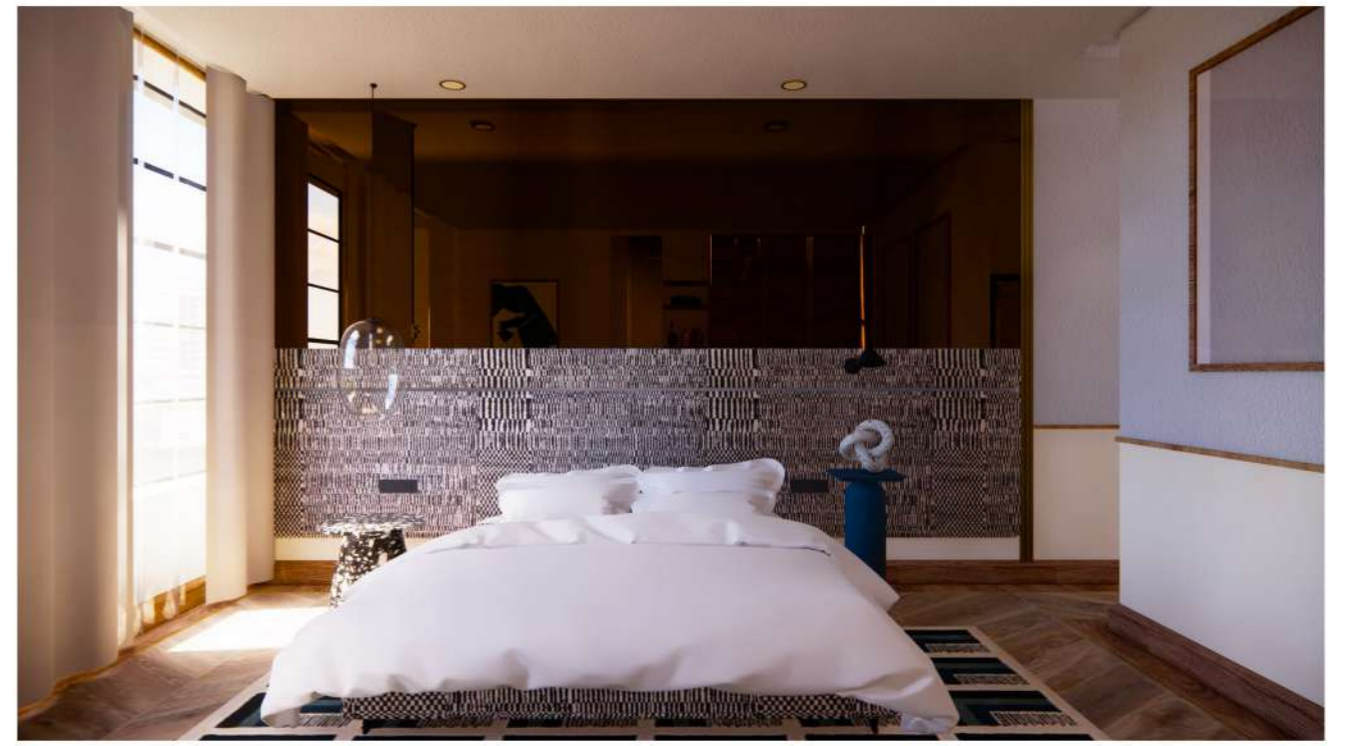
HALLWAY DESIGN AND SEATING OUTSIDE BATHROOM



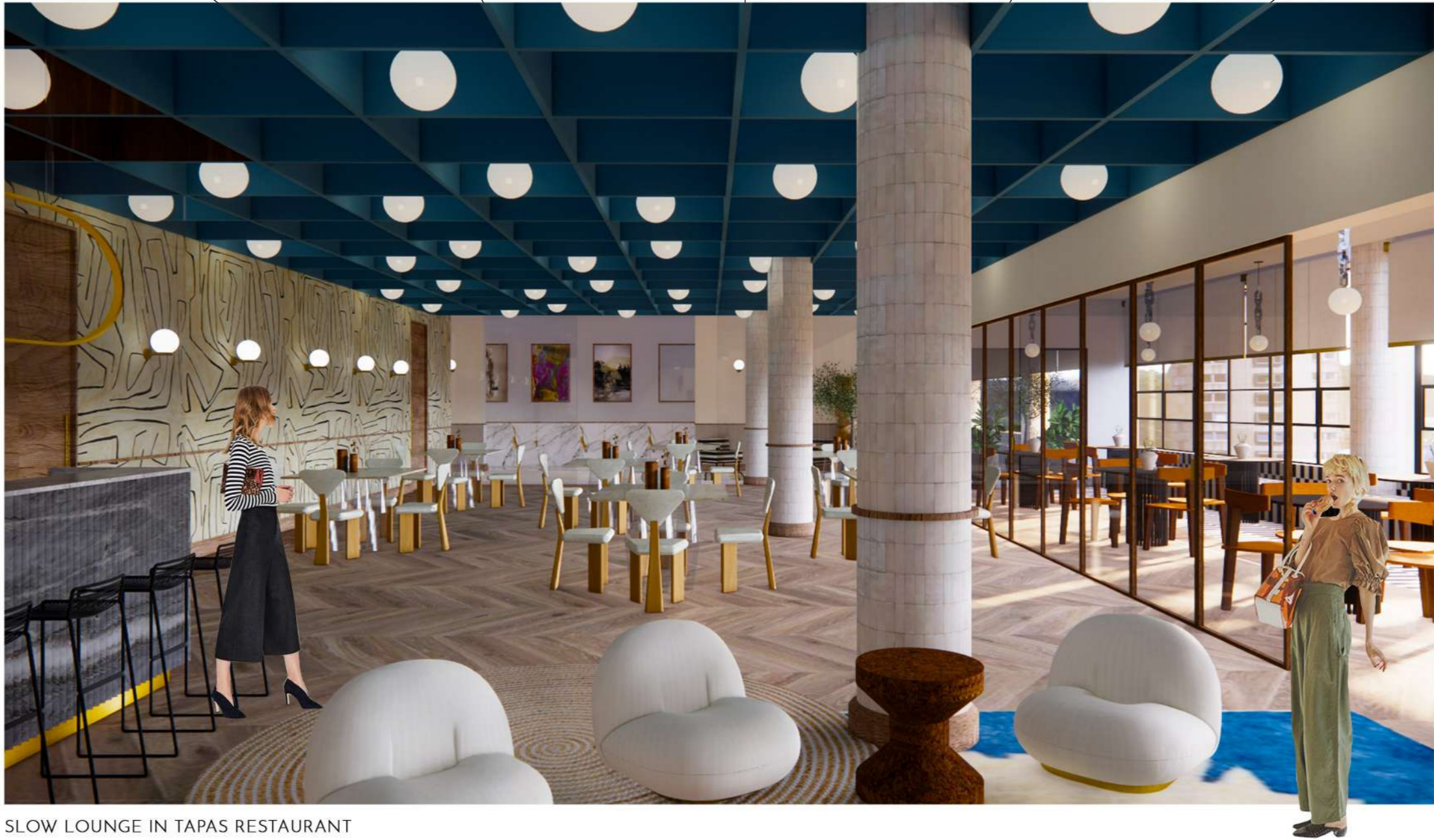
WALK-THROUGH LIBRARY DESIGN



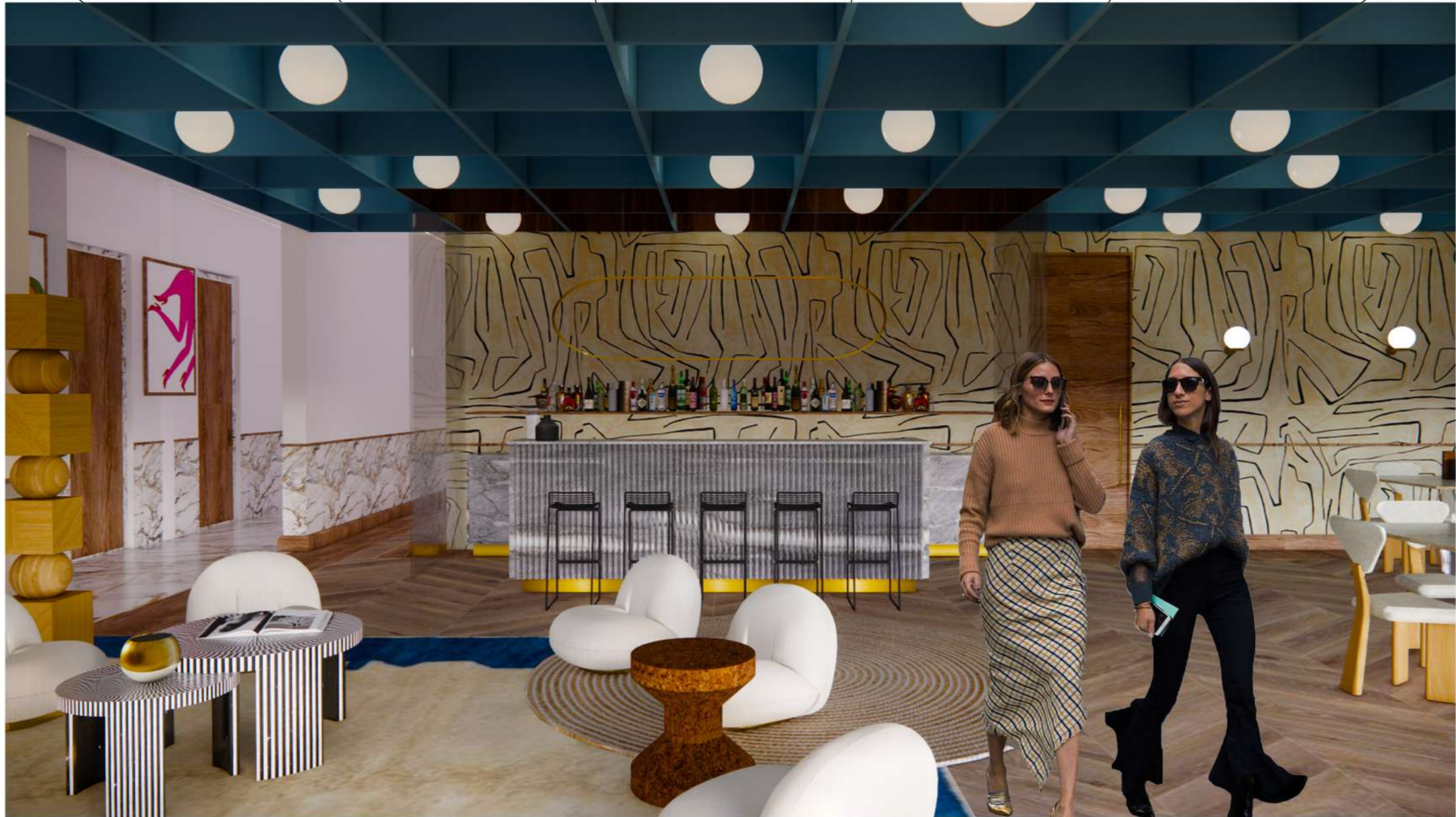
BEDROOM TYPE 1 DESIGN



BEDROOM TYPE 1 DESIGN



SLOW LOUNGE IN TAPAS RESTAURANT



BAR DESIGN IN TAPAS RESTAURANT



SLOW LOUNGE IN TAPAS RESTAURANT

THE SHIFT - LUXURY PODS

FOR THE LUXURY PODS, I HAVE CHOSEN A CHALLENGING LOCATION THAT HAS NOT BEEN INHABITED BEFORE WITH THE AIM TO MAKE IT A LUXURIOUS HABITABLE SPACE WITH A SENSE OF CALM INFLUENCED BY ITS NATURAL SURROUNDINGS. I WANT THE GUESTS TO FEEL LOST IN THE DUNES SO THAT THEY WILL BE ABLE TO COMPLETELY UNWIND AND UNPLUG FROM THE CHAOS THAT SURROUNDS THEM IN THEIR DAILY LIVES. THE CHOSEN LOCATION FOR THE LUXURY PODS: WITSAND SAND DUNES. TRANSPORTATION TO THE PODS WILL BE VIA HELICOPTER AS THE CHOSEN LOCATION IS REMOTE AND OFF THE GRIND.

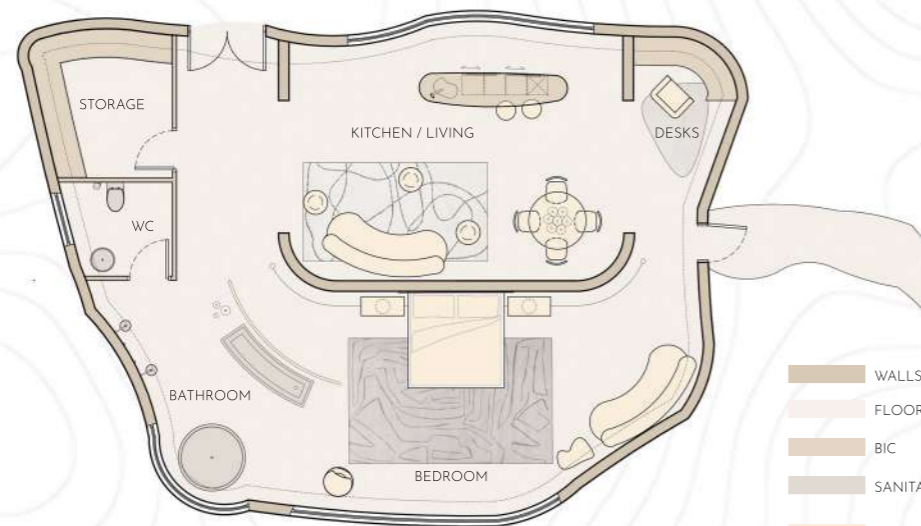
- 1. Ceiling mounted clothes rail in gold - rackbuddy joey
- 2. Custom made teddy bear beds
- 3. Colina end table in white - Kelly Wearstler
- 4. Cocoon fireplace - Federico Otero
- 5. Pazl wallpaper - Dedar, Milano



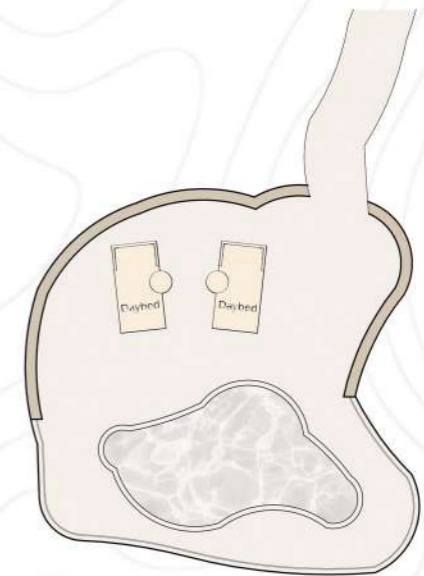
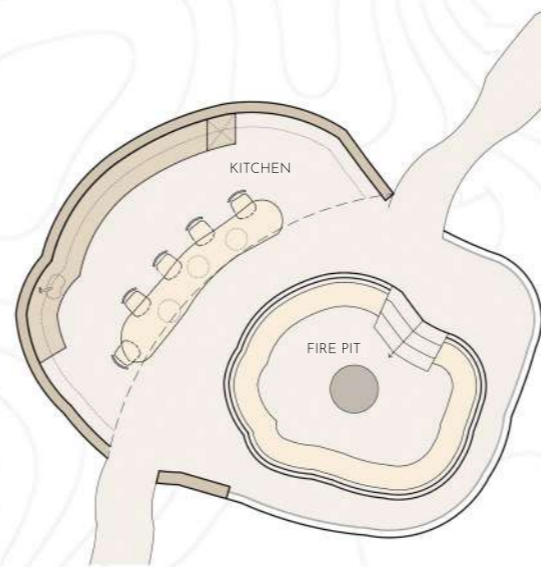
SITE PLAN
NTS

- 1. Detour rug in white out - Hertex Haus
- 2. Beetle Timber - Studio19
- 3. Pierre Augustin Rosa sofa 280 - Pierre Augustin
- 4. Cork family model A and model C - Vitra
- 5. Custom made Travertine table
- 6. Giraffe chair - The invisible collection
- 7. Cloud chandelier - Apparatus studio





- WALLS
- FLOORS
- BIC
- SANITARY WARE
- FURNITURE
- POOL



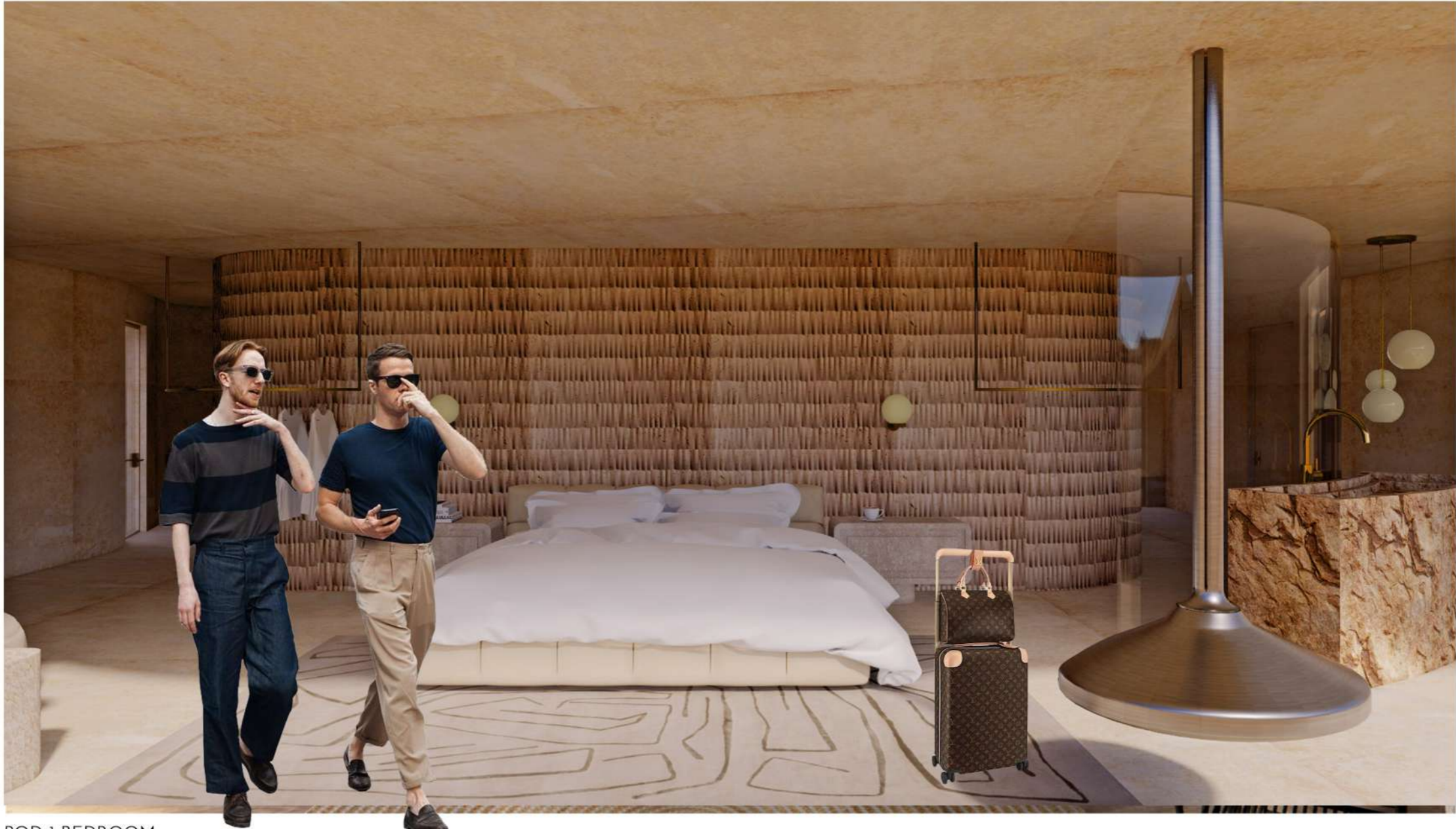
POD 1
SCALE NTS

FIRE PIT AND ENTERTAINMENT POD
SCALE NTS

POOL AND SUN-BATHING POD
SCALE NTS



POD 1 KITCHEN/ LOUNGE DESIGN



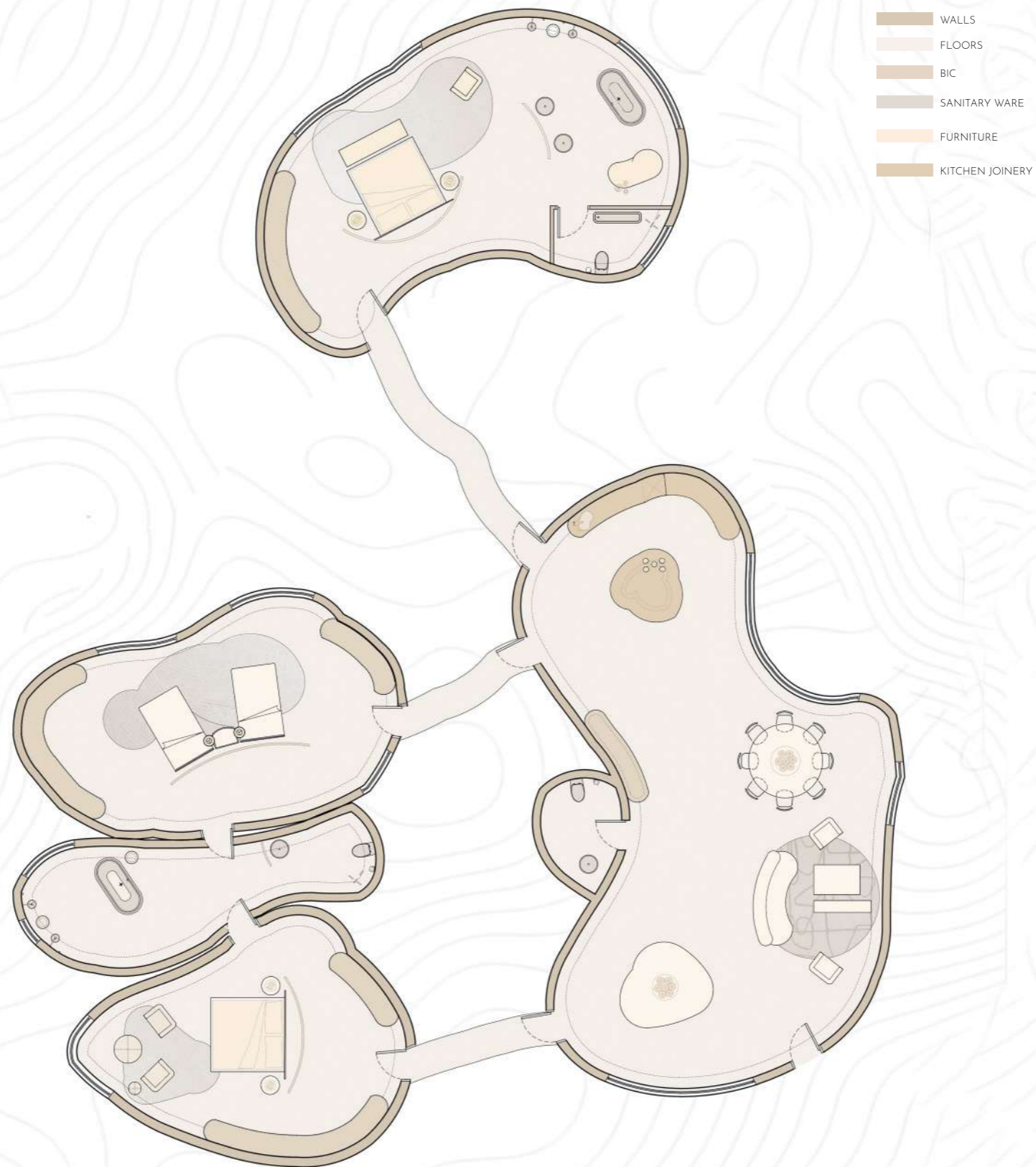
POD 1 BEDROOM



POD 1 BATHROOM



FIRE PIT DESIGN





FIRST IMPRESSION



KITCHEN DESIGN



MASTER BEDROOM



MASTER BATHROOM



GUEST BEDROOM 1



INTER-LEADING BATHROOM

C

EASARSTONE - STUDENT DESIGN COMPETITION

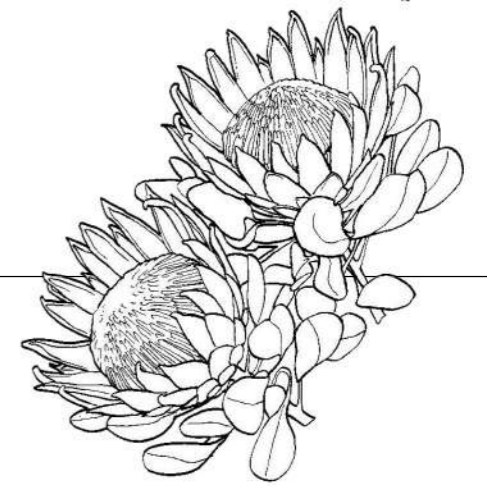
BRIEF

It is time to re-imagine and rebuild the home of South African Democracy, understanding that the National Assembly of 2022 and beyond. This design challenge will call you to inspire both the people and politics of South Africa through the interiors / exteriors of this project. It will ask you to draw on history and design a future that is bright and BOLD!

CONCEPT

BUD = ESSENCE = DEMOCRACY

PETALS PROTECT ESSENCE = DEMOCRACY PROTECTED
= ASSEMBLY NAVIGATES THE DEMOCRACY







FIRST IMPRESSION OF THE NATIONAL ASSEMBLY

UV-RESISTANT ACRYLIC
FOR PROJECTOR
SCREENS = WIND
PROTECTION

INTERIOR PROJECTION
=
EXTERIOR PROJECTION
=
COMMUNITY GATHERS
AROUND PARLIAMENT
=
CIVILIANS,
JOURNALISTS,
NEWS CHANNELS,





SCRAP METAL SHEETS FOR PROTEA

WILLIE BESTER

PROTEA SCULPTOR

BRASS CLADDING

MIDDAY 405 EXTERIOR FOR BENCHES

ZEBRA HYDE TILE INLAY

ENTRANCE TO NATIONAL ASSEMBLY



VIEW FROM FIRST FLOOR ON GROUND FLOOR

"ABESIFAZANE" ZULU
WOMEN
=
DRESSED IN ZEBRA
SKIN
=
REPRESENTS
COMMUNITY,
INDIVIDUALISM,
FREEDOM
=
HIERACHY IN THE
ZULU CULTURE





THE REWARD WALLPAPER
LOCAL ARTIST - CARA
SAVEN



SNOW WHITE 2141
THERMOFOLD



CALACATTA NUVO
5131 TEXTURED IN 3D
CLADDING



MONT BLANC 5043
THERMOFOLD



MISTY CARRERA 4141
THERMOFOLD



VIEW OF PODIUM FROM SEATING



BACK SEATING DETAILING

CALACATTA NUVO 5131
TEXTURED IN 3D CLADDING

"UMUNTU" ZULU
MAN
=
DRESSED IN
LEOPARD
SKIN
=
REPRESENTS
STRENGTH, SELF
RESILIENTS,
AUTHENTICITY
=
HIERACHY IN THE
ZULU CULTURE





FROSTY CARRINA 5141
THERMOFOLD CEILING



THE REWARD WALLPAPER
LOCAL ARTIST - CARA
SAVEN



MONTBLANC 5043



SNOW WHITE 2141
THERMOFOLD



MISTY CARRERA 4141
THERMOFOLD

VIEW FROM AISLE OF SEATING



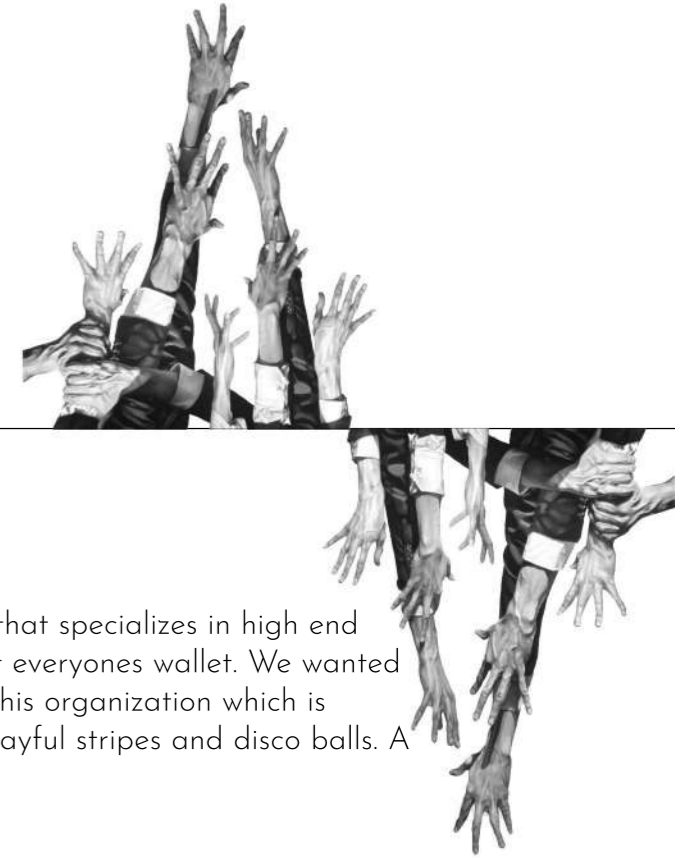
FIRST IMPRESSION



SCAN ME

V

VINTAGE WITH LOVE



BRIEF

You have been approached by the VINTAGE WITH LOVE team and have been tasked with designing their next show stopping event at the Cape Town Cruise Terminal at the V&A Waterfront. The VWL team want you to consider the following, Spatial planning/layout, look and feel concept/interior design scheme, furniture and softs collection, wall graphics and branding in collaboration with orms.

Additional WOW element.

In addition to the interior layout, you have been asked to design an exciting outdoor space in the parking area, in front of the terminal. To include, seating for 100 people to view a fashion show under a bedouin tent, a ramp for the models showcasing clothing, a custom designed slow lounge area with informal lounge and seating at a bar. Your bar needs to feature and celebrate a specific alcohol brand. A few food trucks from the tenants of Makers landing terminal should be positioned around the Bedouin tent.

CONCEPT

VINTAGE WITH LOVE is a none profit organization that specializes in high end second hand clothing and accessories at prices that suit everyones wallet. We wanted to create a space that celebrates the very meaning of this organization which is LOVE. We have used colors that evoke emotion with playful stripes and disco balls. A space that is high end and celebrates the shopper.



FIRST IMPRESSION



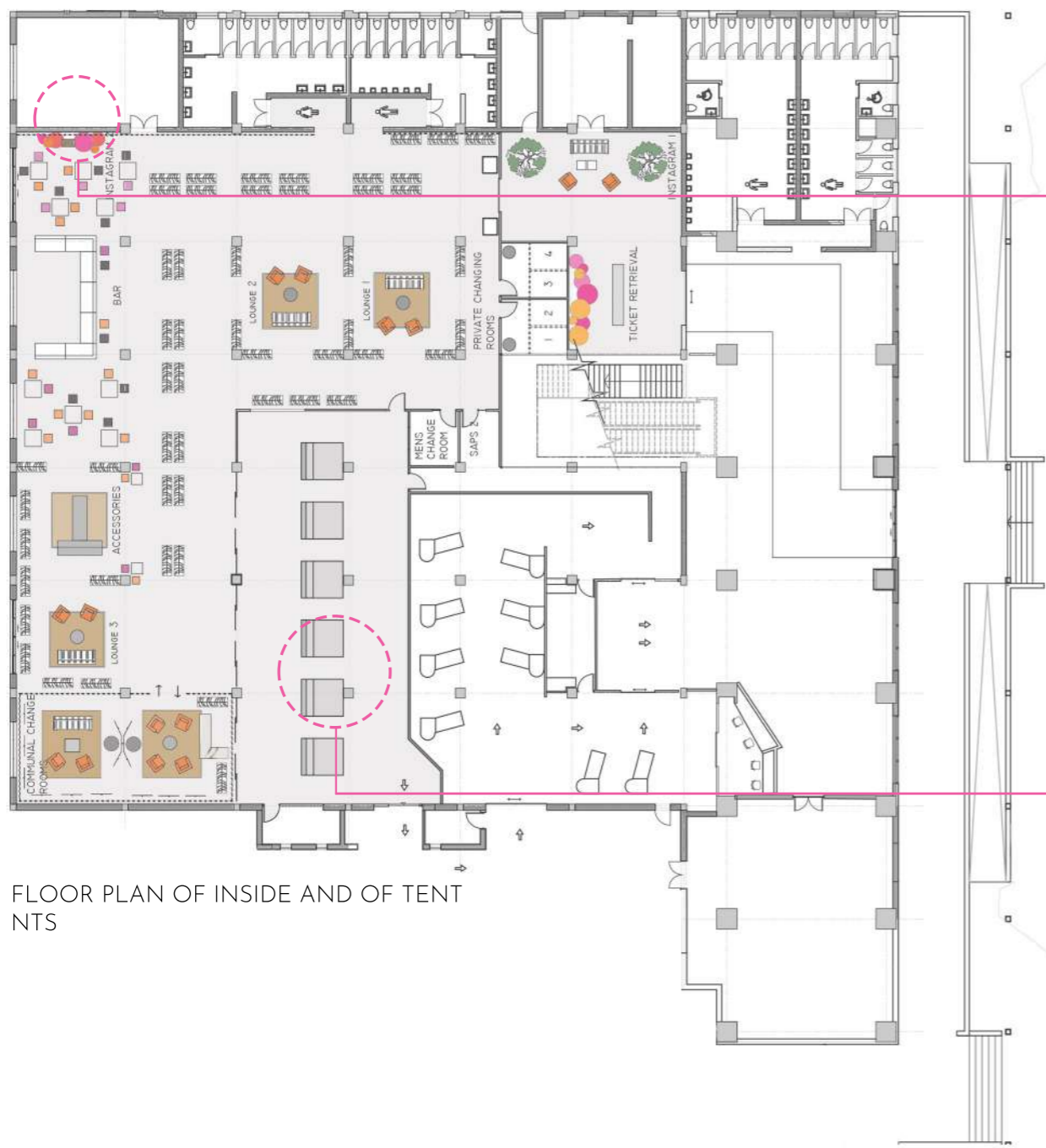
CHANGING ROOMS



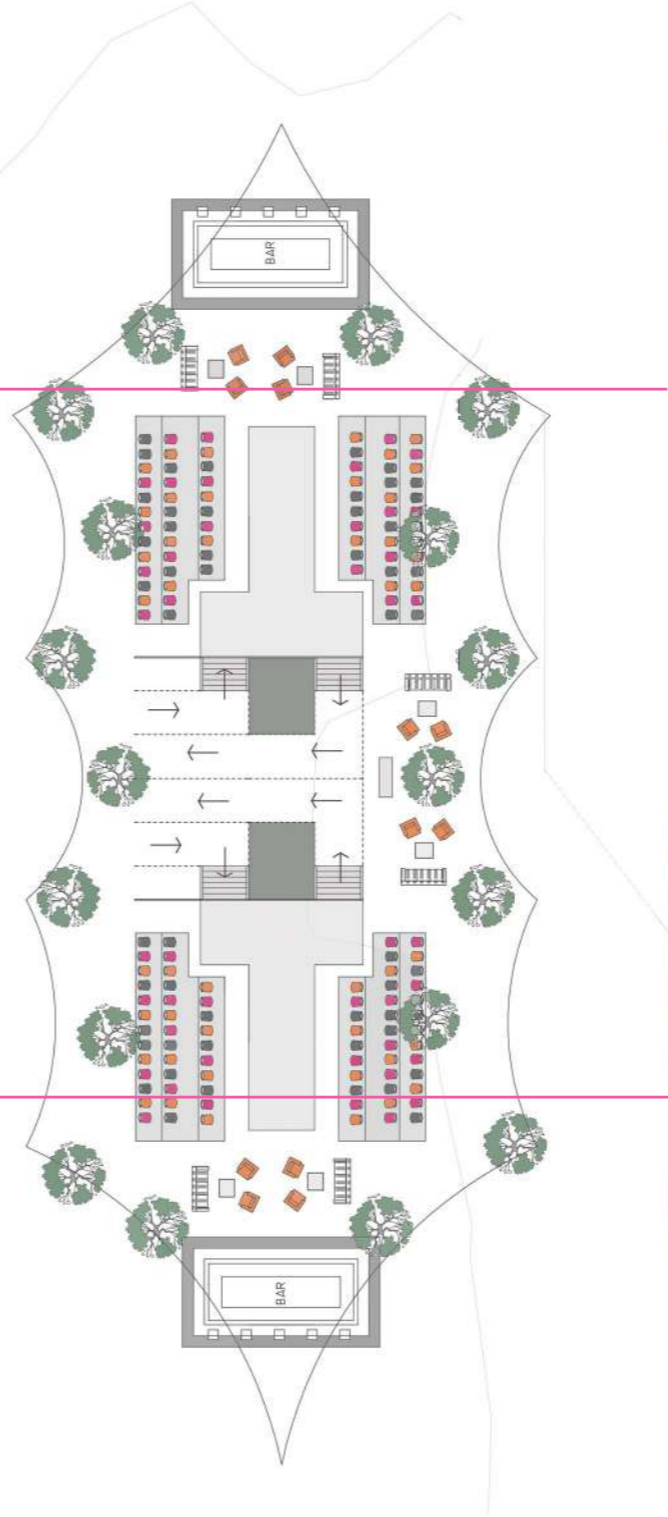
FIRST IMPRESSION OF CLOTHING RAILS AND LOUNGES



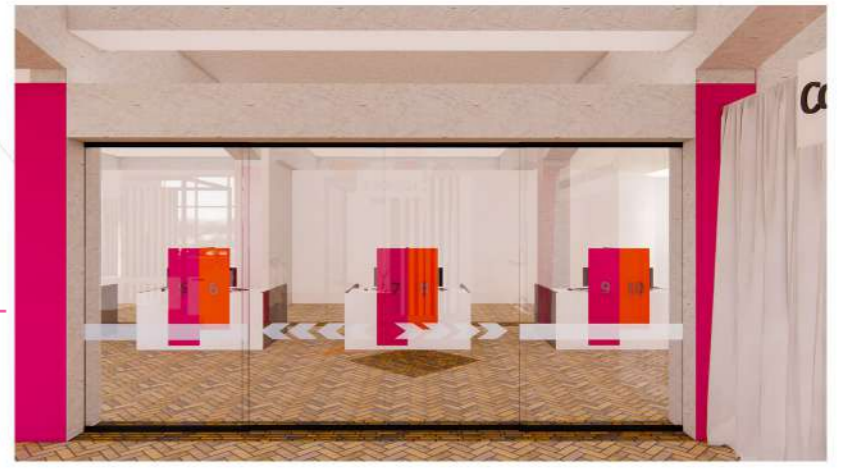
LOUNGE AND CLOTHING RAIL



FLOOR PLAN OF INSIDE AND OF TENT
NTS



INSTAGRAM WALL WITH SWING
AND BALLOONS



PAY POINT DESIGN



FIRST PERSPECTIVE OF FASHION TENT



SECTION OF FASHION TENT



PERSPECTIVE OF BAR & LOUNGE AREA



PERSPECTIVE OF RUNWAY

K

KITCHEN SPECIALIST ASSOCIATION

BRIEF

A couple in their late 40's have just bought a large, older home in a good area and are renovating it, looking to keep some of the original features but combine them well with contemporary aspects. While they are not short of money they believe in being sensible with expenses. They are looking for a sophisticated contemporary kitchen that ties in well with the older elements of the home. They want the kitchen to have longevity - they don't want to have to do this again. It needs to be ergonomically designed to work for them as they get older. They want to collect wine and entertain. The kitchen will be open-plan to the main living room which has more traditional elements in it, so the kitchen design has to flow well into this space creating a harmonious link between the old and the new.

CONCEPT

I wanted to design a space that keeps some of the original features of a Victorian home and combine them with contemporary aspects such as fully integrated kitchen cabinets, modern finishes with high end appliances. I was heavily inspired by a marble that is quite busy yet I think it adds great warmth to the kitchen and really adds that "WOW" factor. The kitchen has tons of storage space for all of the kitchen equipment as well as huge work spaces to use while cooking. It has a built in wine fridge for when entertaining guests or wanting to add a little bit of flavor to your dinner.

The space offers two island chairs which are perfect for entertaining someone while you cook them a delicious meal. An integrated extractor fan which is hidden by the marble tiles keeping and sleek and clean look.

This design is a statement and won't age as I have designed it in a way to be timeless, sleek and clean. A statement piece that will bring a lot of joy to the home in the future.

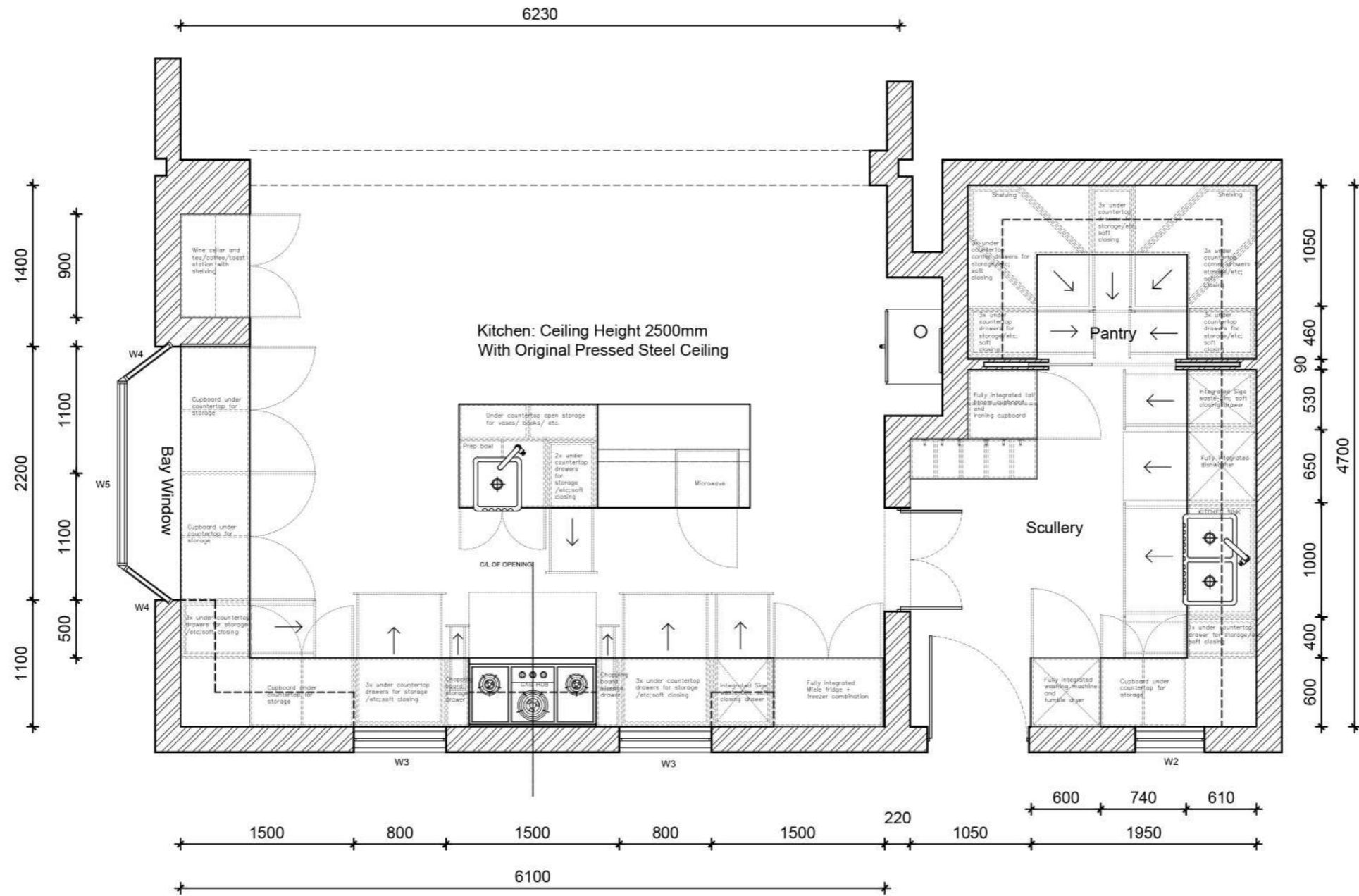


FIRST IMPRESSION



FRONT ON OF KITCHEN DESIGN





FLOOR PLAN
NTS



SIDE VIEW OF BACK OF HOUSE , SCULLERY AND PANTRY



BACK OF HOUSE , SCULLERY AND PANTRY



VIEW FROM ISLAND OF KITCHEN



BRIEF

Atlantic Studios is known as a cutting-edge film and television studio facility in the industry. Unfortunately when it comes to their canteen on the 2nd floor of the main building together with their cast and crew lounge their facilities fail to impress. Atlantic Studios has approached me to re-design their current canteen together with their crew and cast lounge in order to breath new life into these neglected spaces. The upgrade of these areas together with an upgrade of the existing coffee shop on the ground floor will ensure that their cutting-edge status remains intact for years to come.

CONCEPT

Inspired by neutral colours and clean lines i designed a space that is both beautiful and functional. The space makes use of both new and existing furniture which has either been reupholstered or a fresh coat of paint. I was inspired by a space that wouldnt 'age' and that would stay in style for the years to come. Using neutral colours suchs as charcoals and greys with pops of colours like Sage green and Buuterscotch leather. When designing the canteen space i wanted to create 'zones' for people to eat/work so that the food would stay in one place. I designed an informal work station infront of the coffee station for those wanting to work and have a coffee, multiple tables with existing plastic chairs for eating as well as a new booth seating section to create a more comfortable eating area for those staying longer in the canteen, the back lounge section was designed in a way which high seating for an informal work space and then a steel room divider seprates the informal work space from the lounge area, which is an assortment of comfortable armchairs and curved sofas which prevent people from eating of them as the are curved and you cant really find a comfrotable place to eat. When designing the Cast lounge it was important to have space for the cast to read lines/ relax before shooting. I used the existing bench as a work space as well as having a low seating alone the window for an informal work space, next to that i have intergrated bins which are hidden away in terms of site and smell. I also made use of the existing couches which have been reupholsterd and refoamed. In the Crew room i really wanted to design a space that was ideal for their routine, a coffee station which has ampel amounts of storages as well as a microwave, hydroboil and sink. A curved sofa has been used in this space as it prevent people from eating on it which will prevent food being kept in this space. I use lockers along the back wall for storage for the crew for their personal belongings as well as a low seating informal work space incase they have some admin work to do. Neon lights have been used throughout the space as it adds a sense of happiness and joy.



FIRST IMPRESSION APON ENTRANCE TO CAFE



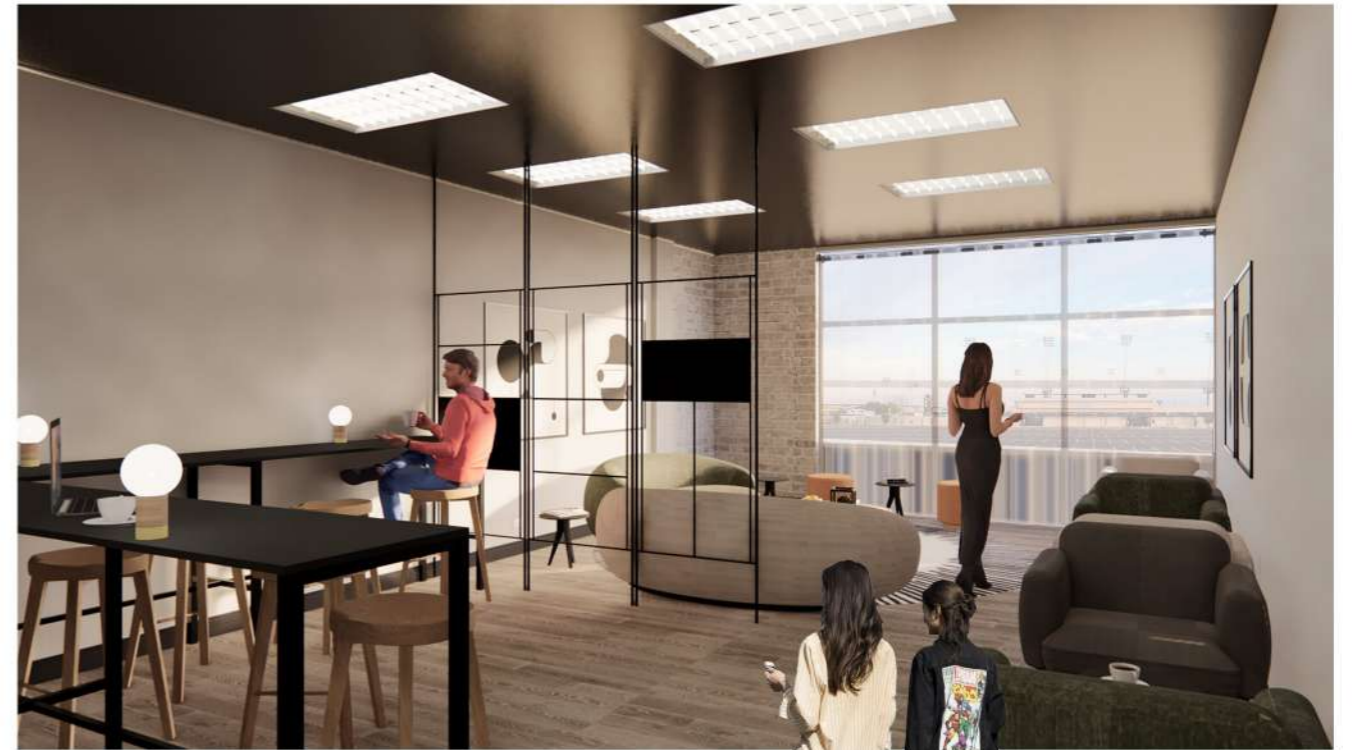
COFFEE STATION AND INFORMAL WORK SPACE



SERVICE COUNTER



CANTEEN LOUNGE



CANTEEN INFORMAL WORK SPACE AND LOUNGE





SIDE VIEW OF CAST LOUNGE

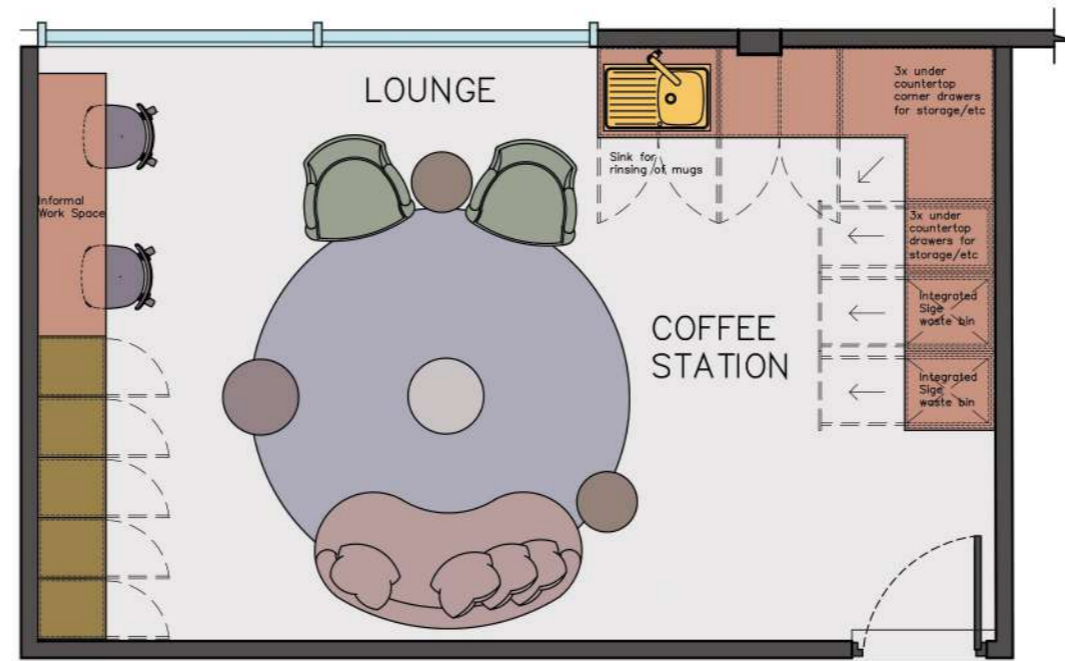




FIRST FLOOR
 CANTEEN / LOUNGE AND WORKSPACE
 SCALE 1:50

- | | | |
|--------------------------------------|-------------------------------|-------------------|
| ARMCHAIRS | EXISTING COUCHES REHOLPOSTERD | NEW ROUND TABLES |
| COFFEE TABLE | NEW CHAIRS | WALLS |
| EXISTING PLASTIC CHAIRS | STEEL SERVER | WINDOWS |
| SIDE TABLES | EXISTING BENCH | STANITARY WARE |
| BUILT IN ITEMS | BOOTH SEATING | RUGS |
| EXISTING SQUARE TABLES WITH NEW TOPS | NEW SOFAS | EXISTING FLOORING |
| STOOLS | OTTOMANS | |

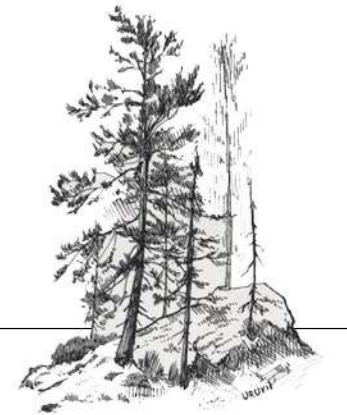
- NEW SOFAS
- ARMCHAIRS
- WALLS
- COFFEE TABLE
- WINDOWS
- RUGS
- STANITARY WARE
- SIDE TABLES
- OTTOMANS
- BUILT IN ITEMS
- EXISTING FLOORING



GROUND FLOOR
CREW LOUNGE
SCALE 1:50

F

UTURE FORWARD - ECOLOGY



BRIEF

the brief invited me to imagine a way of living in the lap of nature, suspended amongst a magnificent forest, under starry skies, anywhere in the world. the design of the tree house must be innovative, creative with a sustainable edge whilst adhering to biophilic design principles. the exterior surroundings and the interior space must be taken into consideration. the tree house space will be designed for 2 individuals and the area should not exceed 50 sqms built up internally

CONCEPT

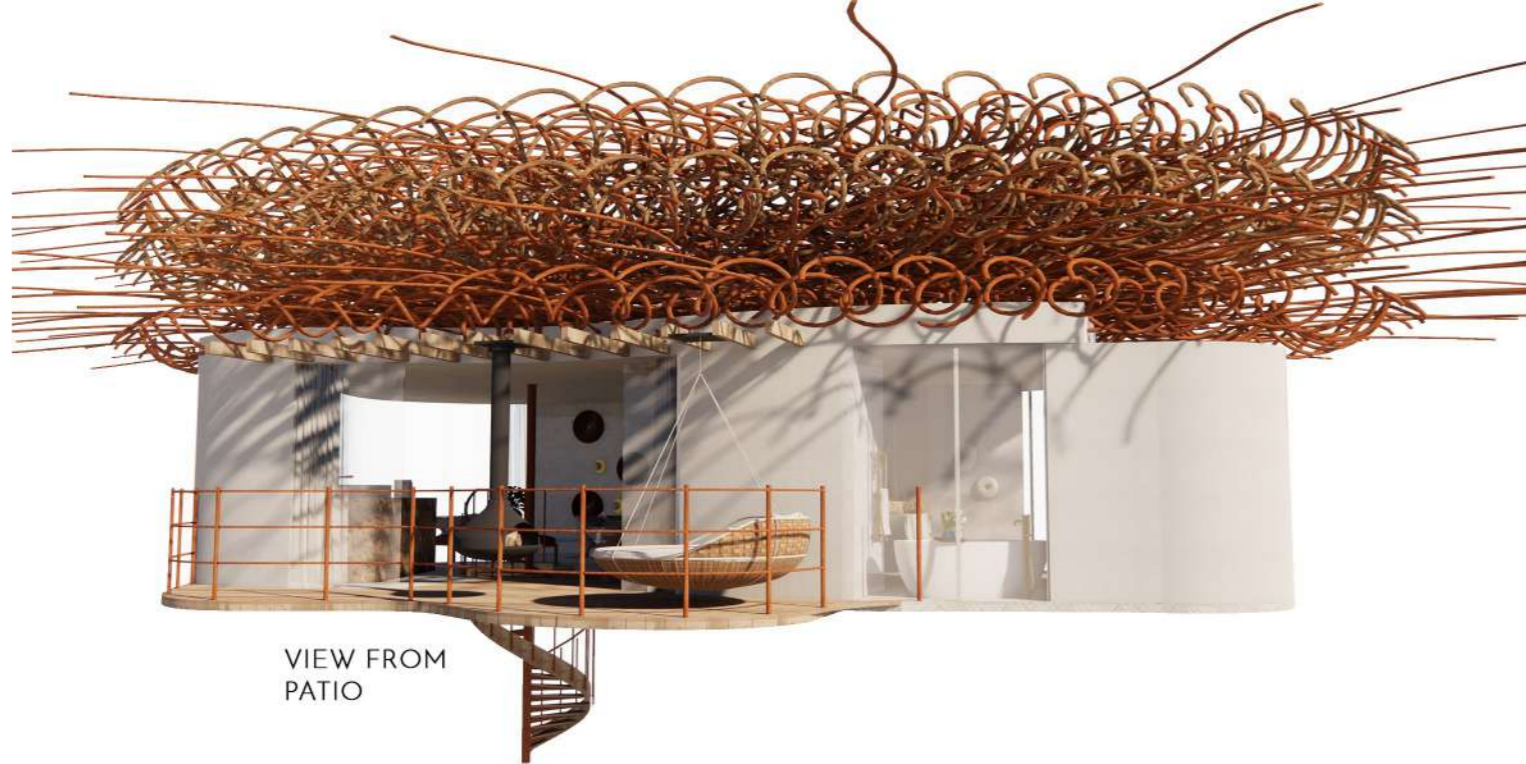
inspired by the baobab fruit and the modern aspects of design ecology was built. a space that takes you far away from your chaotic and stressful life, your very own dream space rooted in mother nature. ecology has been designed to cater , sleep, bath and enjoy a dreamy fireplace. with a spiral staircase situated in the trunk of a baobab tree as well as chandelier hanging from the trees for transport to the recreational pods, designed for relaxation and comfort



FIRST IMPRESSION



VIEW FROM PATIO



VIEW FROM PATIO



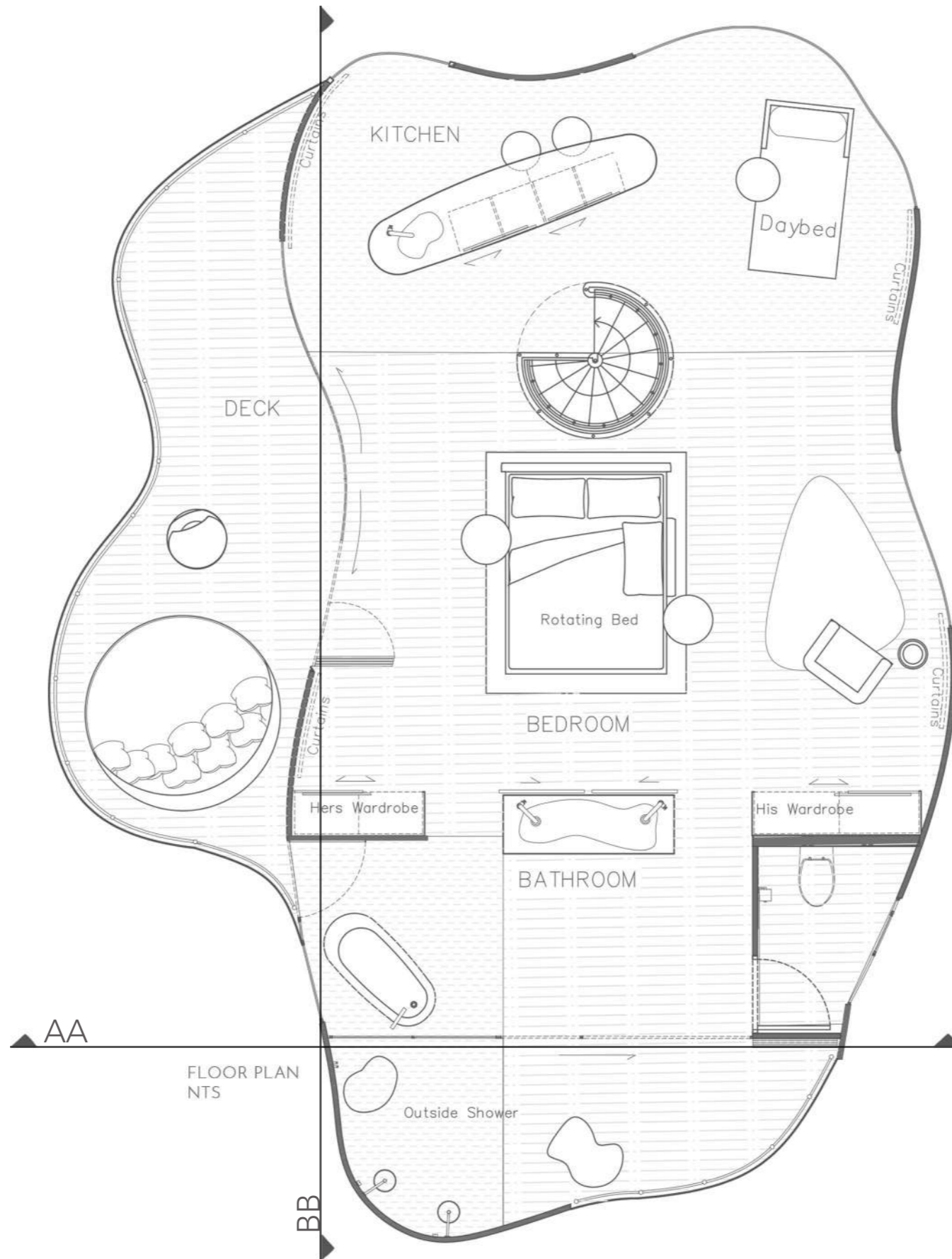
ELEVATION AA NTS



ELEVATION BB NTS



SUSPENSION POD



C

CO CREATE - OFFICE PROJECT

BRIEF

the brief was to design a energized, daring + playful and members only work enviroment where like-minded, creative professionals; Architects, Interior, Graphic, Textile and Product designers alike, share this creative space. Gone are the days of employees who are trapped in isolated booths, heads down with little social interaction. Instead, office design has shifted towards flexible working, with spaces to suit different needs, such as co-working and collaboration, socializing and private research.

CONCEPT

inspired by modern industrial design, this space is designed to feel spacious and airy with a touch of warmth. the cold industrail elements contrasted with burnt oranges, rich reds, mustard yellows, reef blues, olive greens and natural light timber. Creating a space for creatives to be most inspired and productive, different spaces within the space

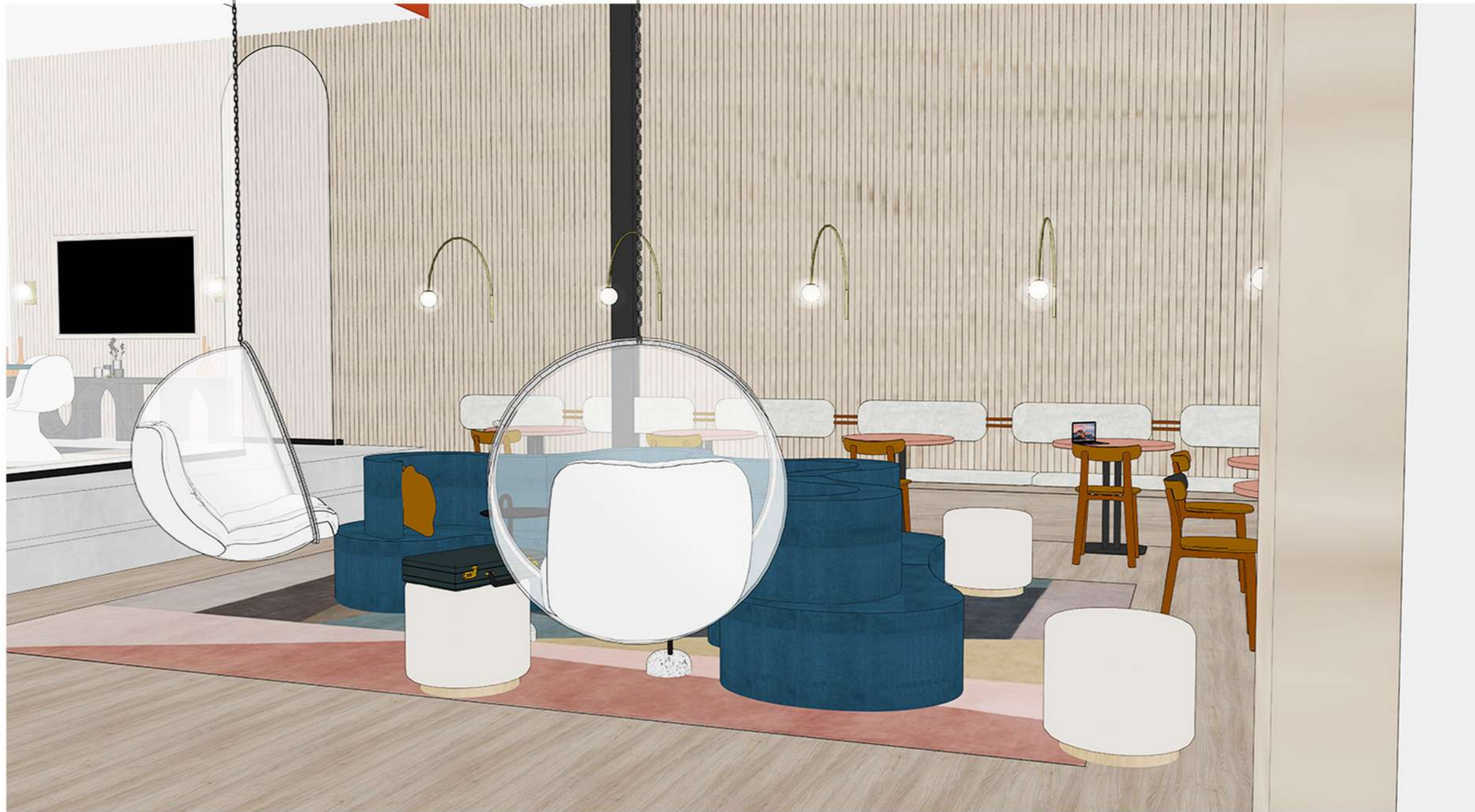




FIRST IMPRESSION OF RECEPTION



LOUNGE SEATING IN OFFICE SPACE



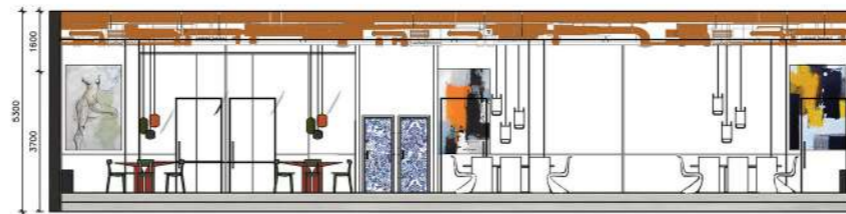
INFORMAL WORK SPACE AND LOUNGE



1. FLUTTED WOOD PANELS | WHITE OAK | OGGIE
2. PINK WALLS IN LOBBY AND SNACK STATION | BRIGHT BLUSH | PLUSCON
3. SHELVING ABOVE PRINTERS | SUNSET ROGUE | PLUSCON
4. EXPOSED DUCTING | SAHARA WILD | PLUSCON
5. CONCRETE FLOORING | OCEAN | CEMCRETE
6. BRASS FINISHES
7. KITCHEN COUNTERTOP | ARABESCATO VAGLI | WOMAG
8. RECEPTION WALLPAPER | VINTAGE - REST FOR A BIT | CARASAVEN
9. PRINTER STATION AND COFFEE STATION WALLPAPER | LOWVELD SOIL LINENE TEXTURE | ENVY&CO | ROBIN SPRONG
10. CLOVERLEAF SOFA | MAGICAL - IN REEF | HERTEX
11. KITCHEN CUPBOARD | FENIX BLOOM - GIALLO KASHMIR | MOT
12. ROLF BENZ ARMCHAIRS AND THROW CUSHIONS ON CHAPTER 2 SOFA | MAGICAL - IN PORT | HERTEX
13. CHAPTER 2 SOFA, OTTOMANS AND BOOTH SEATING | CAREFREE- SPUNKY IN SARDINIA | HERTEX
14. WOODEN FLOORING | ASH | OGGIE



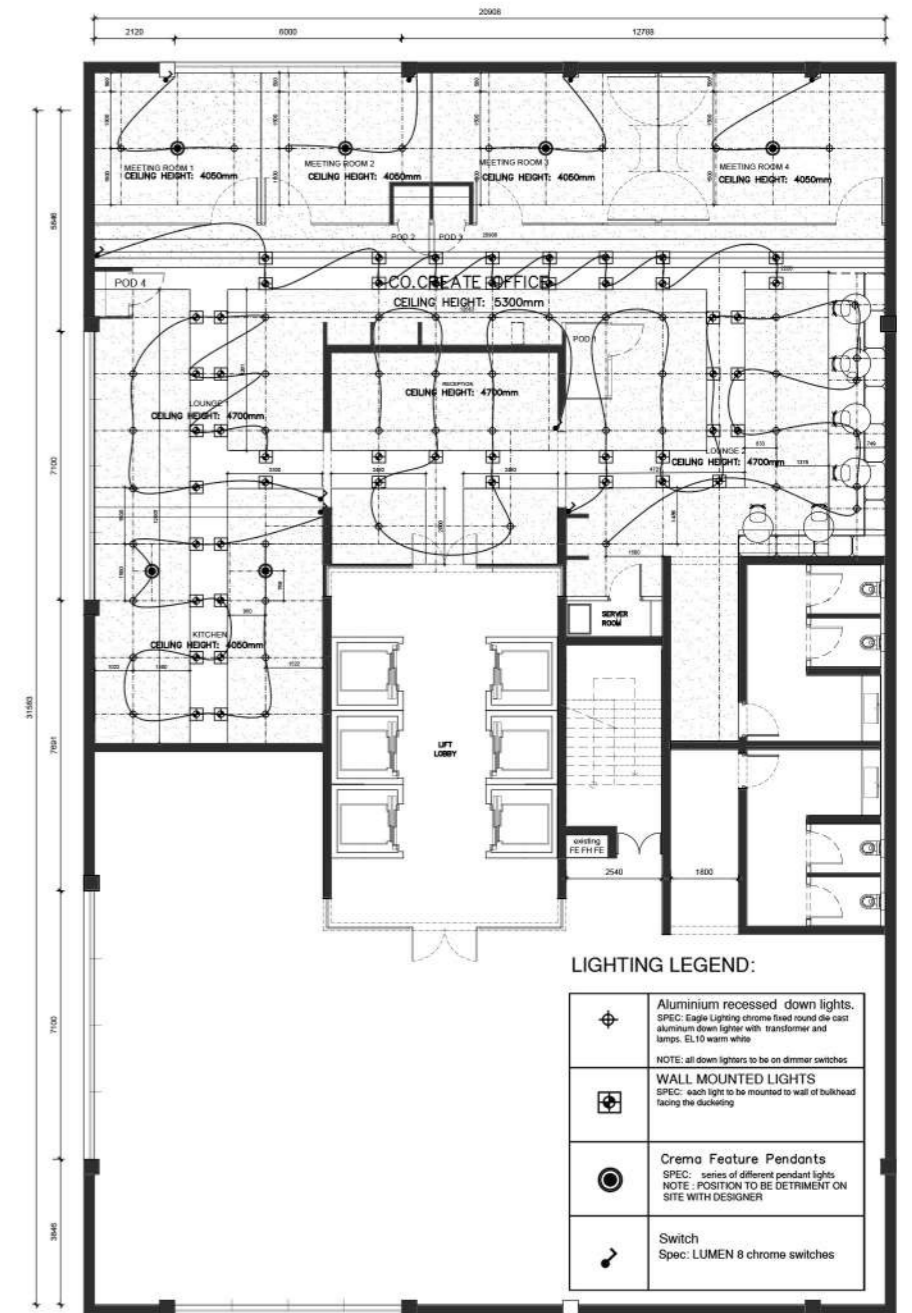
FLOOR PLAN
NTS



ELEVATION AA
NTS



ELEVATION BB
NTS



LIGHTING PLAN
NTS

L

LITTLEBIG - FESTIVAL DESIGN



BRIEF

Forty minutes outside of Cape Town, in a forest at the Wisenhof farm, an annual pilgrimage of around 800 revelers would gather for 24 hours of music, design, art, and food. Come February 2022, prepare yourself for a sensory overload, of carefully curated magic. The brief asked me to design, conceptualize and curate glamping tents, which must sleep two guests, 1 exceptional pop-up food stand as well as a gin and tequila bar accompanied by its very own slow lounge, set below a bedouin tent

CONCEPT

Life's too short to be 'normal'. Are you ready?

The littleBIG show is a one of a kind 24hr music festival, located only 40 minutes from Cape Town. Inspired by the circus as well as a Masquerade ball, the littleBIG show makes use of victorian styled furniture with some bonkers features. As most festivals are always bright and colourful, i wanted to take a different approach that being said using beige's, gold's, silver's and green's. That being said i have designed a glamping tent, food stall and a slow



GLAMPING TENT

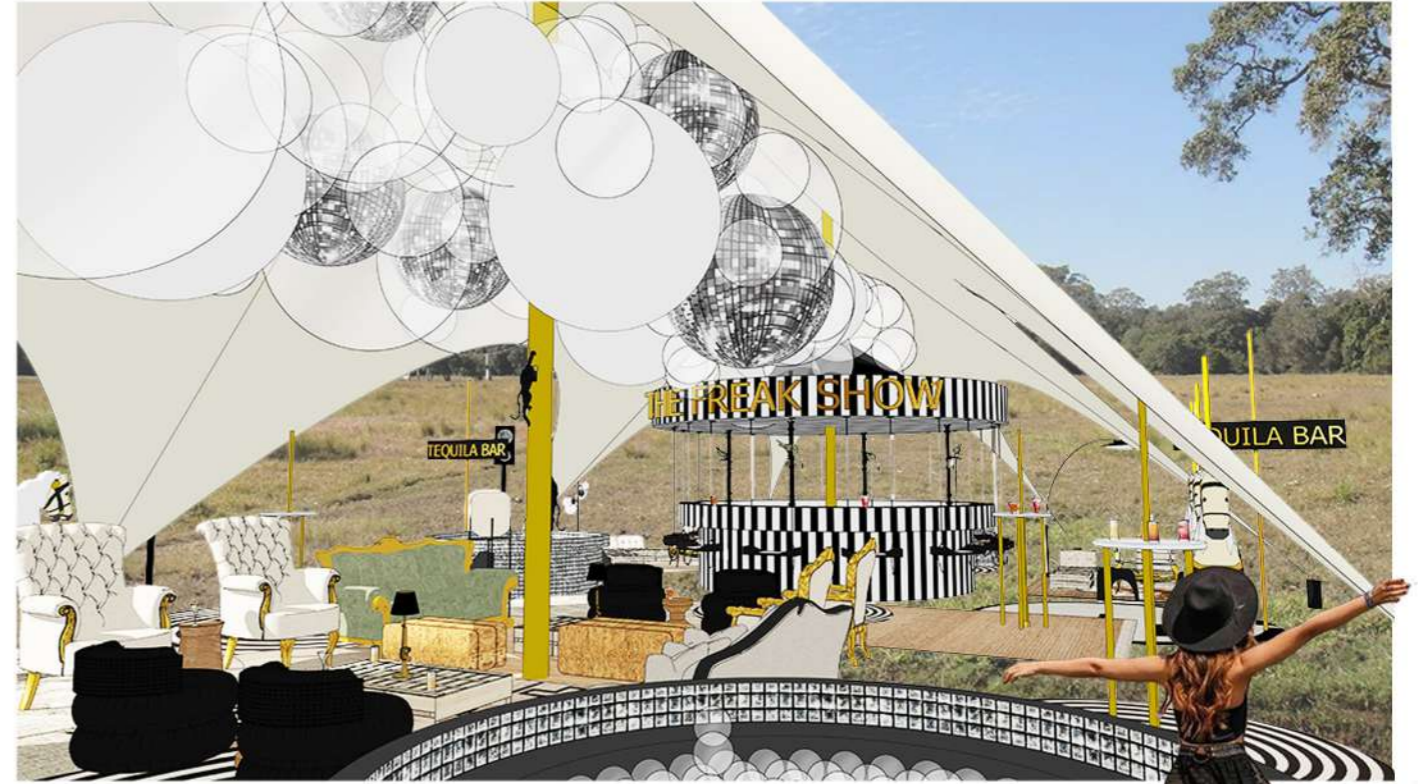




FIRST IMPRESSION OF SLOW LOUNGE



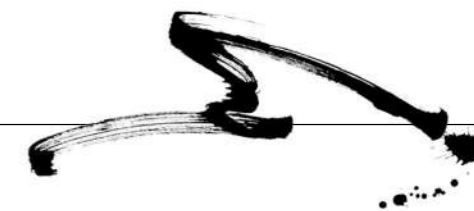
IMPRESSION OF TEQUILA BAR



VIEW FROM DISCO BALL PIT

H

ASHI - UPCYCLE



BRIEF

the brief was to upcycle and breath new life into a simple timber stool. This gave me the opportunity to tranform our selected stool into something fresh, relevant and exciting. This stool must be unique and globally trend worhty. No less that 60% of the stools existing structure must remain intact

CONCEPT

inspired by the japanse culture and the way the poddle is cut , the stool Hashi was designed



FIRST IMPRESSION



CLOSE UP OF SEAT DESIGN



CLOSE UP OF LEG DESIGN WITH CUFFS



CLOSE UP OF ARCH DESIGN



FRONT ON OF STOOL

C

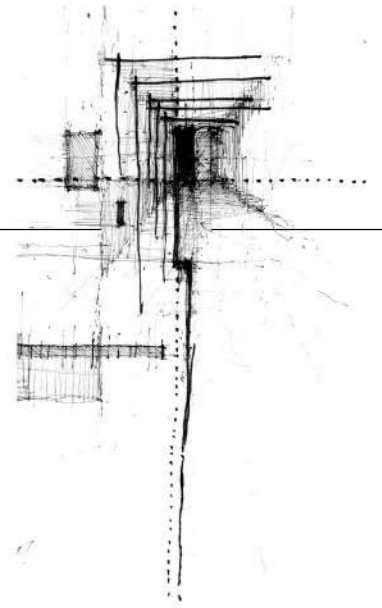
UBIC CHAOS - PRODUCT DESIGN

BRIEF

the brief was to design and create a working pendant that was designed around the cable. making the cable the design of the light. a choice between 2 bulbs, clear filament or frosted filament. a minium of 2 meters cable to be used in lenght

CONCEPT

inspired by the chaos that surrounds our daily lives and how we often bottle it all up. a simple yet effective and beautiful design.

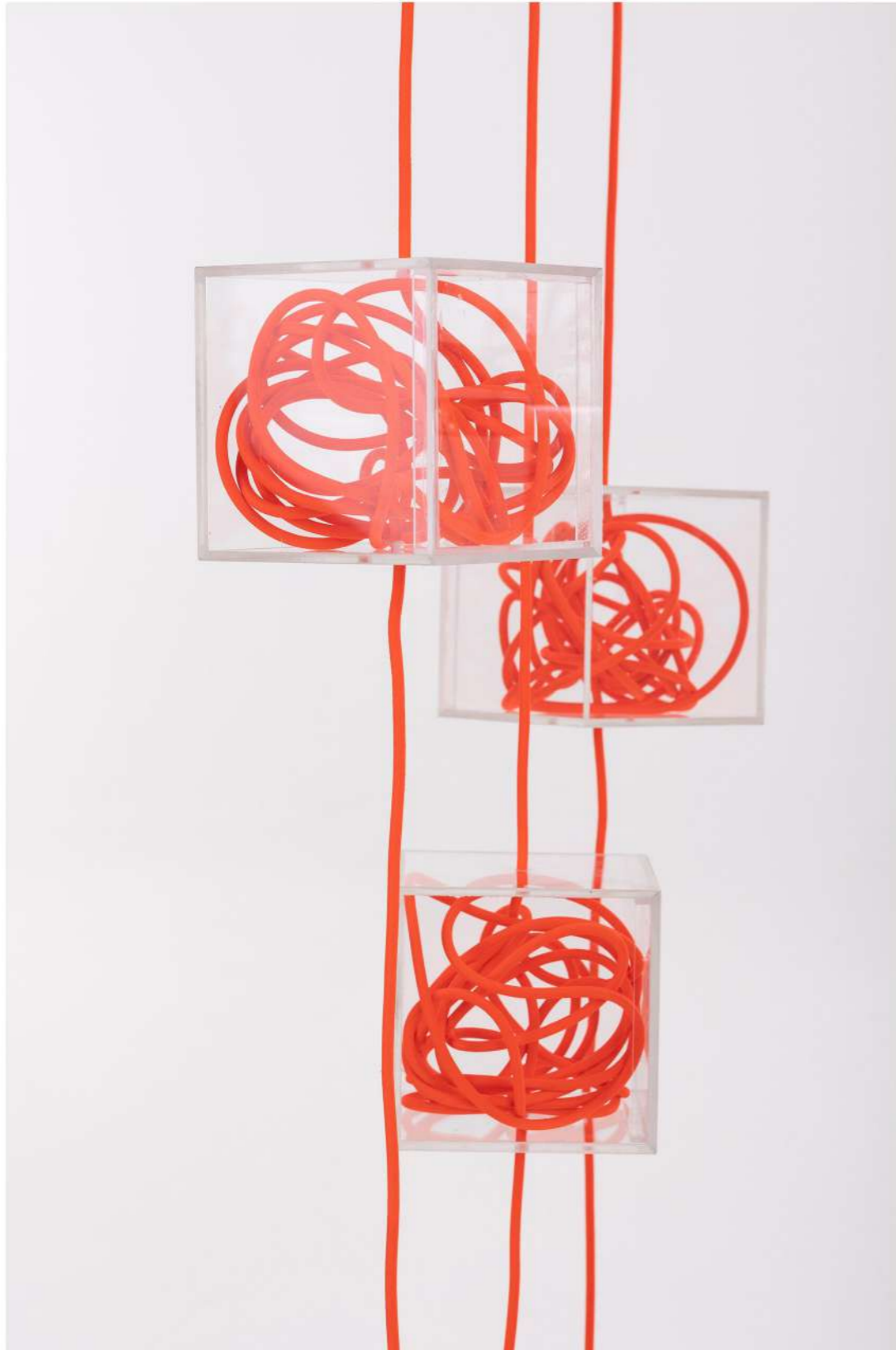




FIRST IMPRESSION



DETAIL OF CABLE IN BOX



CLOSE UP OF BOX



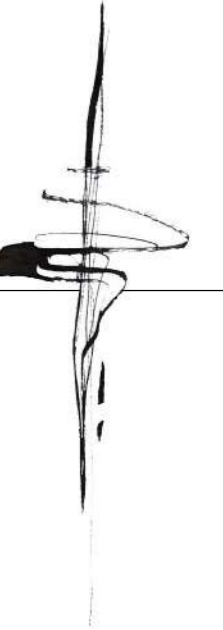
ELEVATION

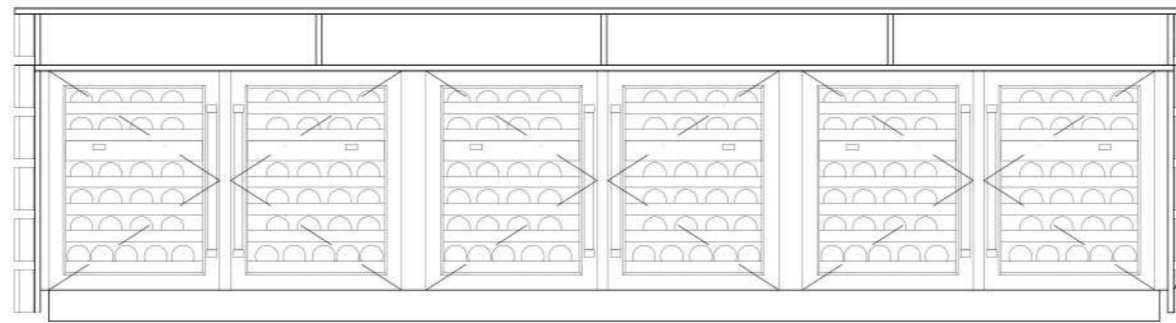
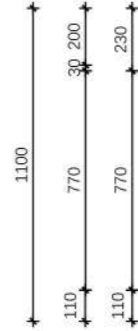
T

TECHNICALS

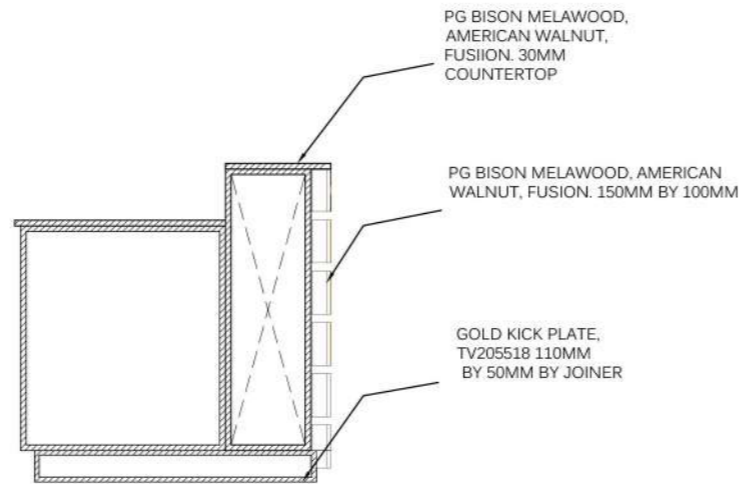
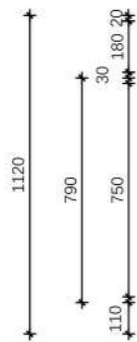
BRIEF

A composed selection of all the technical drawings i have done throughout the year





**SLOW LOUNGE BAR
BACK ELEVATION**
SCALE 1:25



**SLOW LOUNGE BAR
SECTION**
SCALE 1:25

TRADE NOTES

Copyright over all design and drawings shall remain the intellectual property of Design Time Studio and any provision to the contrary in terms of the Copyright Act No. 62 of 1964 is hereby specifically excluded.

Reproduction of this drawing or design and/or any portion thereof, other than in terms of the Client/Contractor/Designer Agreement, is strictly prohibited.

Contractors and subcontractors to verify all levels, heights and dimensions on site, and to check same against the drawings, before putting any work in hand.

Quality of all materials and workmanship to comply with the relevant SABS and BCS specifications.

The contractor is responsible for correct setting out on the specified works.

Contractors are to ensure that all details shown on this drawing are in complete compliance with local authority by-laws and regulations.

Contractors are to locate and identify existing services on site, and are to protect these from damage through the duration of work.

Contractors shall be responsible for ensuring the structural stability of all components of their work and ascertain that no main structure is capable of supporting all loads applied thereto.

Contractors are to ensure that their work, on site, is adequately protected at all times, during construction, and the responsibility for any damages incurred lies with the contractor until final hand over on the site. Contractors and subcontractors are to ensure that all components, glazing panels and shapings fit through all doorways, stairwells and lifts.

This drawing is not to be scaled. Figured dimensions are to be used at all times.

Any queries or variations arising from any of the above, must be referred to Design Time Studio for clarification, prior to the commencement of any works.

DRAWING NOTES

DRAWING NOTES

REVISIONS

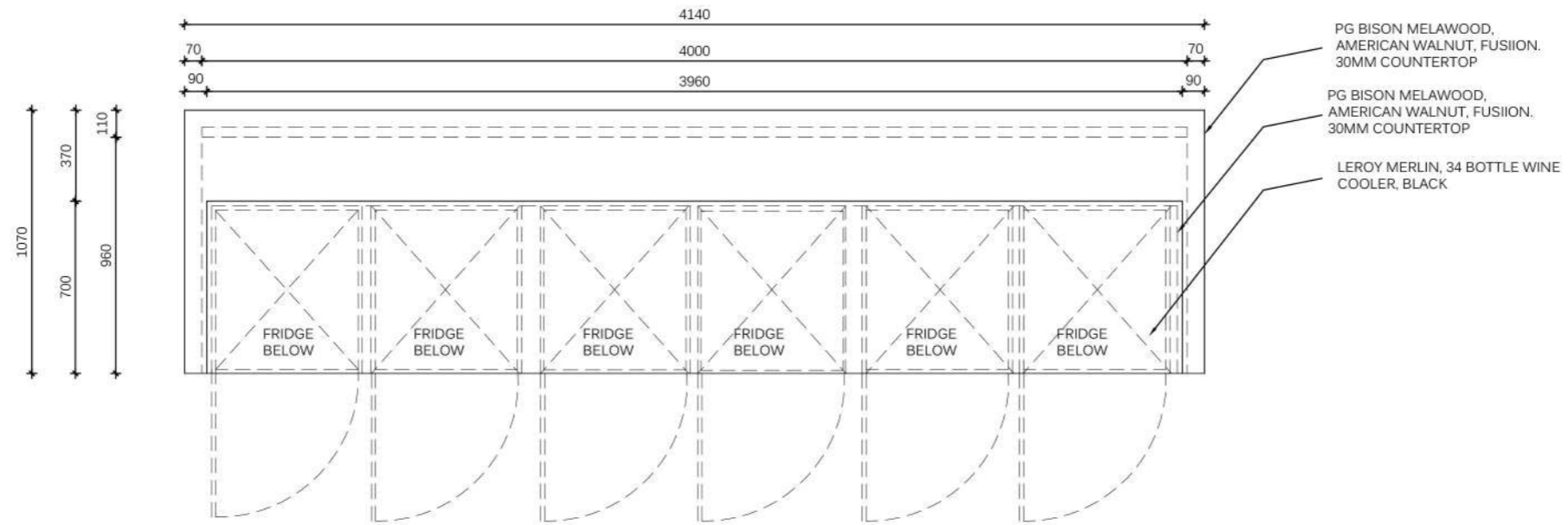
0	DATE	DESCRIPTION
Item	date	description

project title
BC COMPONENT

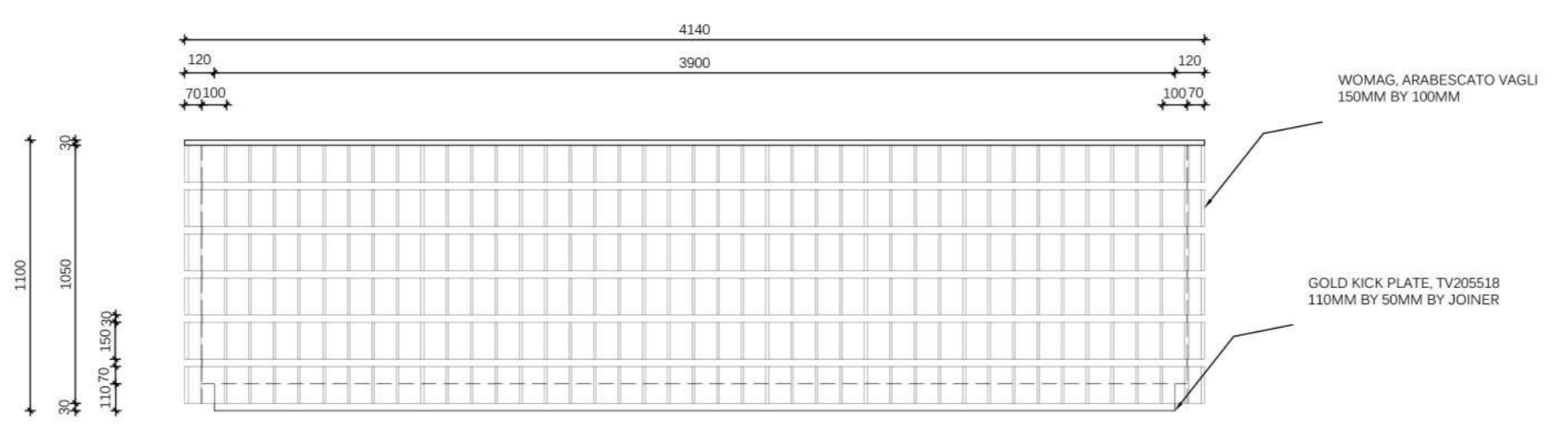
drawing description
**SLOW LOUNGE BAR
BACK ELEVATION
SECTION**

drawing number	02	scale	1:25
project number	100.2	date	15.11.22
designer	DROOMER	revision	1

client approval



**SLOW LOUNGE BAR
PLAN
SCALE 1:25**



**SLOW LOUNGE BAR
FRONT ELEVATION
SCALE 1:25**

TRADE NOTES

Copyright over all design and drawings shall remain the intellectual property of Design Time Studio and any provision to the contrary in terms of the Copyright Act No. 63 of 1964 is hereby specifically excluded.

Reproduction of this drawing or design without any portion thereof, other than in terms of the Client/Architect/Designer Agreement, is strictly prohibited.

Contractors and subcontractors to verify all levels, heights and dimensions on site, and to check same against the drawings, before putting any work in hand.

Quality of all materials and workmanship to comply with the relevant SABS and BSS specifications.

The contractor is responsible for correct setting out on the specified works.

Contractors are to ensure that all details shown on this drawing are in complete compliance with local authority by-laws and regulations.

Contractors are to locate and identify existing services on site, and are to protect these from damage through the duration of work.

Contractors shall be responsible for ensuring the structural stability of all components of their work and ascertain that the main structure is capable of supporting all loads applied thereto.

Contractors are to ensure that their work, on site, is adequately protected at all times, during construction, and the responsibility for any damage incurred lies with the contractor until final hand over to the site. Contractors and subcontractors are to ensure that all components, glazing panels and shopfit items fit through all doorways, stairwells and lifts.

This drawing is not to be scaled. Figure dimensions are to be used at all times.

Any queries or variations arising from any of the above, must be reported to Design Time Studio for clarification, prior to the commencement of any works.

DRAWING NOTES

DRAWING NOTES

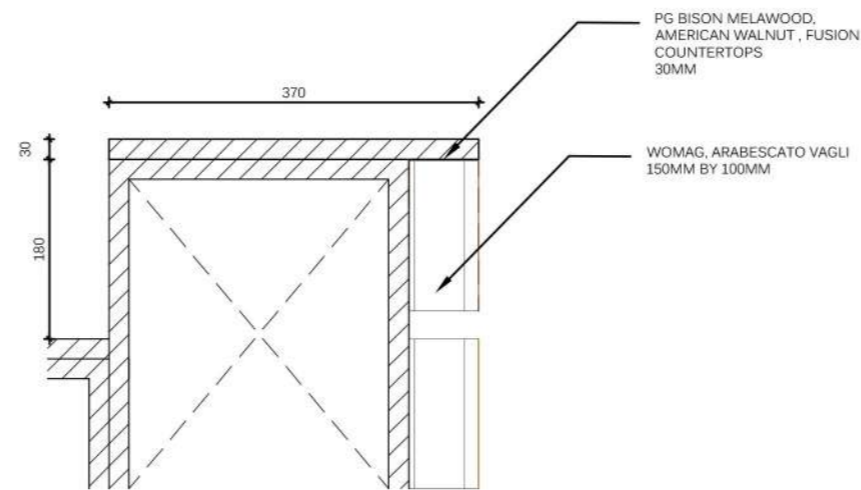
REVISIONS

0	DATE	DESCRIPTION
term	date	description

project title
BC COMPONENT

drawing description
**SLOW LOUNGE BAR
PLAN
FRONT ELEVATION**

drawing number	01	scale	1:25
project number	100.1	date	15.11.22
designer	DROOMER	revision	1
client approval			



SLOW LOUNGE BAR
 DETAILED SECTION
 SCALE 1:10

TRADE NOTES

Copyright over all design and drawings shall remain the intellectual property of Design Time Studio and any provision to the contrary in terms of the Copyright Act No. 63 of 1988 is hereby specifically excluded.

Reproduction of this drawing or design and/or any portion thereof, other than in terms of the Client/Architect/Designer Agreement, is strictly prohibited.

Contractors and subcontractors to verify all levels, heights and dimensions on site, and to check against the drawings, before putting any work in hand.

Quality of all materials and workmanship to comply with the relevant SABS and BSS specifications.

The contractor is responsible for correct setting out on the specified works.

Contractors are to ensure that all details shown on this drawing are in complete compliance with local authority by-laws and regulations.

Contractors are to locate and identify existing services on site, and are to protect these from damage through the duration of work.

Contractor shall be responsible for ensuring the structural stability of all components of their work and ascertain that the main structure is capable of supporting all loads applied thereto.

Contractors are to ensure that their work, on site, is adequately protected at all times, during construction, and the responsibility for any damages incurred lies with the contractor and that held over on the site, contractors and subcontractors are to ensure that all components, glazing panels and structural beams through all doorways, windows and lifts.

This drawing is not to be scaled. Figured dimensions are to be used at all times.

Any queries or variations arising from any of the above, must be reported to Design Time Studio for clarification, prior to the commencement of any work.

DRAWING NOTES

REVISIONS

0	DATE	DESCRIPTION
Item	date	description

project title
BC COMPONENT

drawing description
**SLOW LOUNGE BAR
 DETAILED SECTION**

drawing number	03	scale	1:10
----------------	----	-------	------

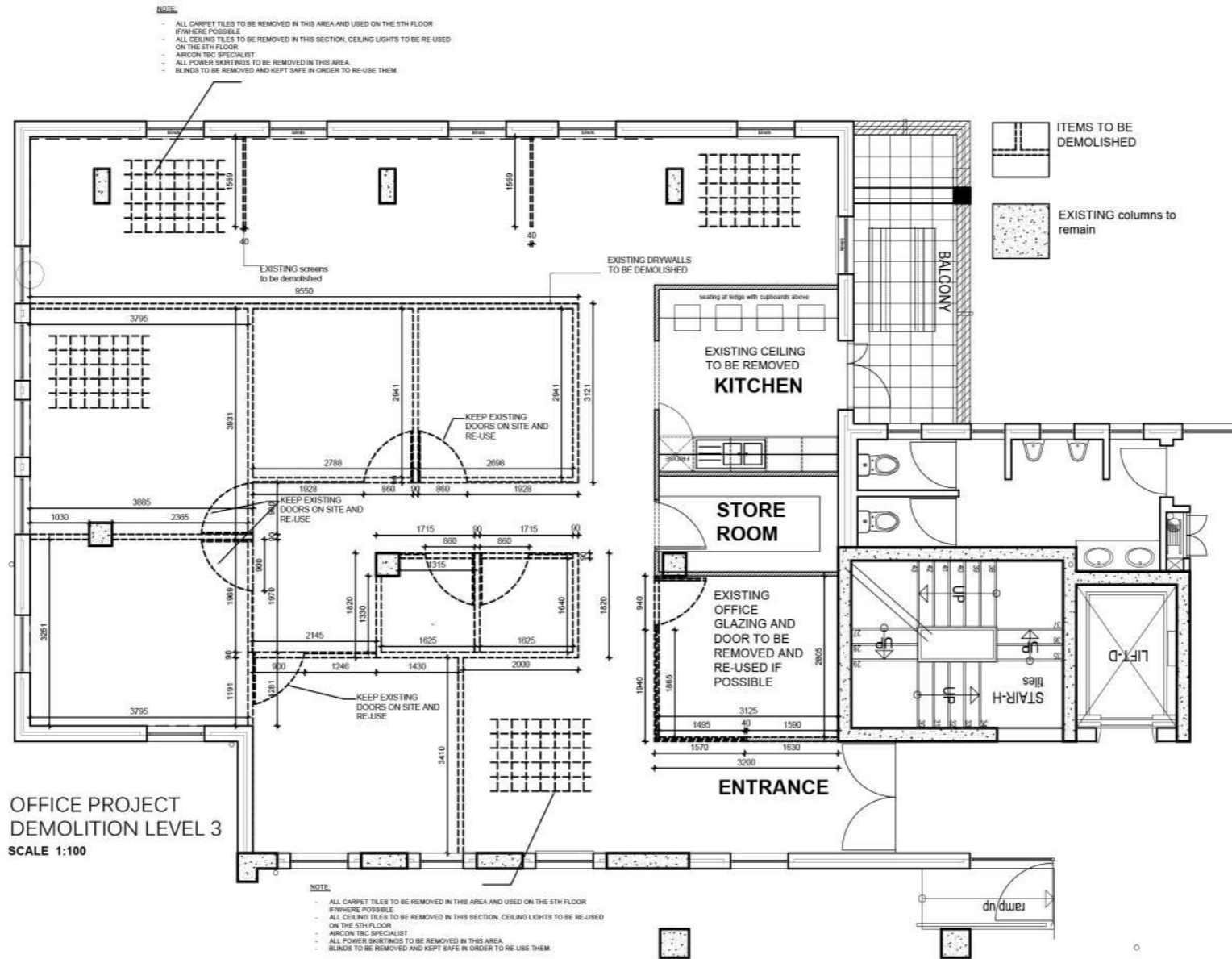
project number	100.3	date	15.11.22
----------------	-------	------	----------

designer	DROOMER	revision	1
----------	---------	----------	---

Client approval

LEVEL 3

WORKING DRAWING PACKAGE



TRADE NOTES

Copyright over all design and drawings shall remain the intellectual property of Design Time Studio and any provision to the contrary in terms of the Copyright Act No. 62 of 1962 is hereby specifically excluded.

Reproduction of this drawing or design under any portion thereof, other than in terms of the Client/Designer Agreement, is strictly prohibited.

Contractors and subcontractors to verify all levels, heights and dimensions on site, and to check same against the drawings, before putting any work in hand.

Quality of all materials and workmanship to comply with the relevant SANS and BQC specifications.

The contractor is responsible for correct setting out on the specified works.

Contractors are to ensure that all details shown on this drawing are in complete compliance with local authority by-laws and regulations.

Contractors are to locate and identify existing services on site, and are to protect these from damage through the duration of work.

Contractors shall be responsible for ensuring the structural stability of all components of their work and ascertain that the main structure is capable of supporting all loads applied thereto.

Contractors are to ensure that their work, or site, is adequately protected at all times, during construction, and the responsibility for any damages incurred lies with the contractor until final hand over of the site. Contractors and subcontractors are to ensure that all components, glazing panels and shopfit items fit through all doorways, windows and etc.

This drawing is not to be scaled. Pictured dimensions are to be used at all times.

Any queries or variations arising from any of the above, must be reported to Design Time Studio for confirmation, prior to the commencement of any works.



DRAWING NOTES

REVISIONS

0	DATE	DESCRIPTION
Item	date	description

project title	
BUILDING CONSTRUCTION	
drawing description	
WORKING DRAWING PACKAGE DEMO PLAN	
drawing number	scale
100.1	1:100
project number	date
100	15.08
designer	revision
CHELSEA	REV.2
client approval	

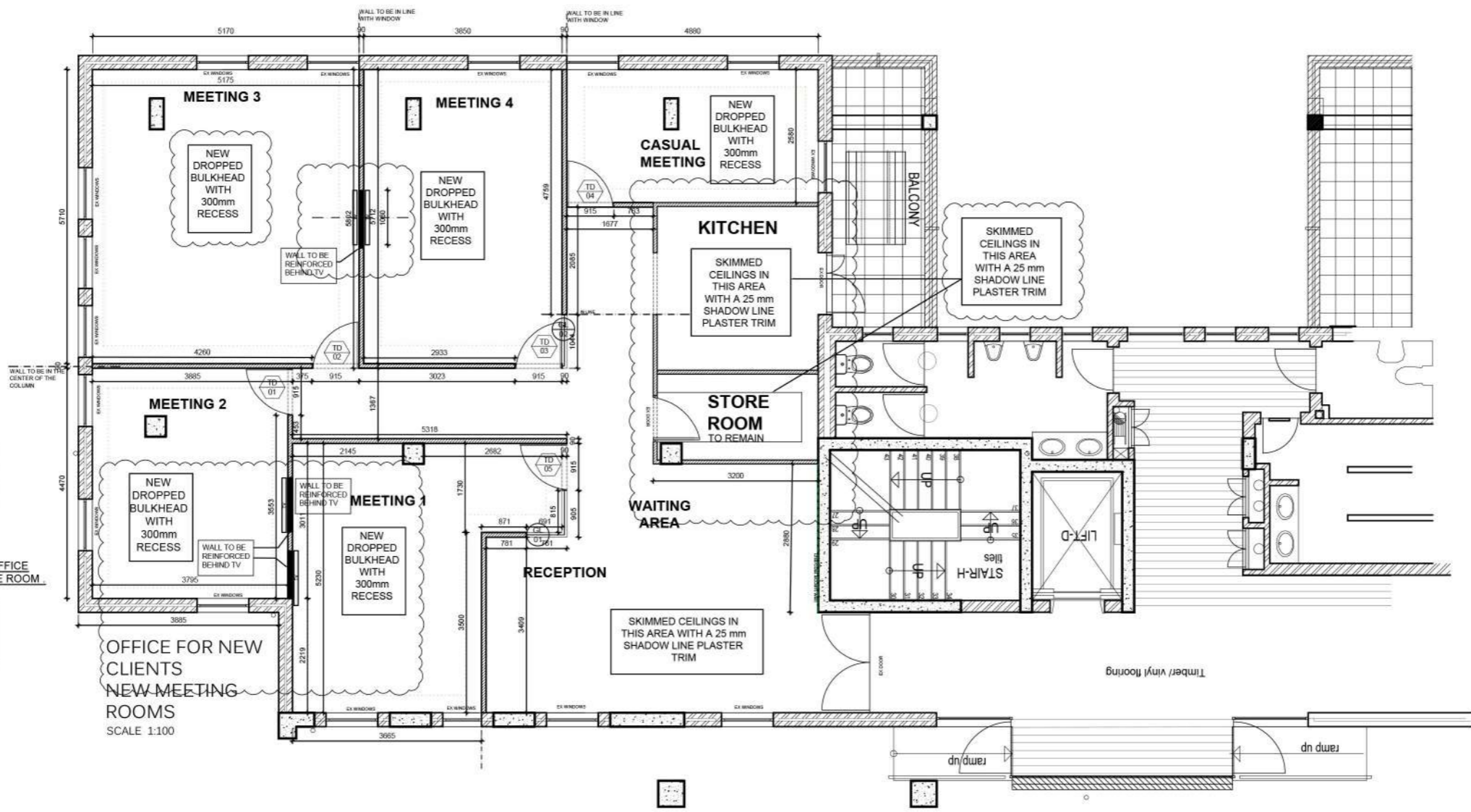
LEVEL 3

-  EXISTING brick walls to remain
-  NEW 90mm DRYWALL with Insulation as per Spec. below

- NOTES:**
1. Drywall positions to be marked on site and confirmed with Designer prior to installation.
 2. Timber doors, windows and glass panels as per Window and door schedule.
 3. 25mm Donn Plasterboard Shadow line edge trim in white, to be used throughout office where Drywall meets with ceiling.
 4. Builder to quote on painting all walls with 2 coats of Plascon Double velvet - Colour Etc.
 5. 150mm painted supawood skirting to installed to areas.

DRYWALL WITH SOUND INSULATION TO ALL OFFICE AREAS EXCEPT AROUND KITCHEN AND STORE ROOM

Rhino-Drywall partitioning shall comprise steel studing formed of 63.5mm top and bottom tracks with vertical studs at maximum 600mm centres, friction fitted or pop riveted to the top and bottom tracks with similar additional vertical studs as necessary at abutments, ends, etc. and covered as described with wallboard screwed to studing with Drywall screws at maximum 220mm centres. Boards are to be buff painted and finished with Rhino tape and Ready mix D jointing compound all in accordance with the manufacturer's instructions. Insert Rhinoflex insulat mineral fibre blanket in cavity.



TRADE NOTES

Copyright over all design and drawings shall remain the intellectual property of Design Time Studio and any provision by the contractor in terms of the Copyright Act No. 62 of 1992 is hereby specifically excluded.

Reproduction of this drawing or design and/or any portion hereof, other than in terms of the Contractor/Designer Agreement, is strictly prohibited.

Contractors and subcontractors to verify all levels, heights and dimensions on site, and to check same against the drawings, before putting any work in hand.

Quality of all materials and workmanship to comply with the relevant SABS and BSS specifications.

The contractor is responsible for correct setting out on the specified works.

Contractors are to ensure that all details shown on this drawing are in complete compliance with local authority by laws and regulations.

Contractors are to locate and identify existing services on site, and are to protect these from damage through the duration of work.

Contractors shall be responsible for ensuring the structural stability of all components of their work and ensure that the main structure is capable of supporting all loads applied thereto.

Contractors are to ensure that their work, on site, is adequately protected at all times, during construction, and the responsibility for any damages incurred lies with the contractor and their hand on site. Contractors and subcontractors are to ensure that all components, glazing panels and structural items fit through all openings, clearances and fits.

This drawing is not to be scaled. Pictured dimensions are to be used at all times.

Any queries or variations arising from any of the above, must be reported to Design Time Studio for clarification, prior to the commencement of any work.

DRAWING NOTES

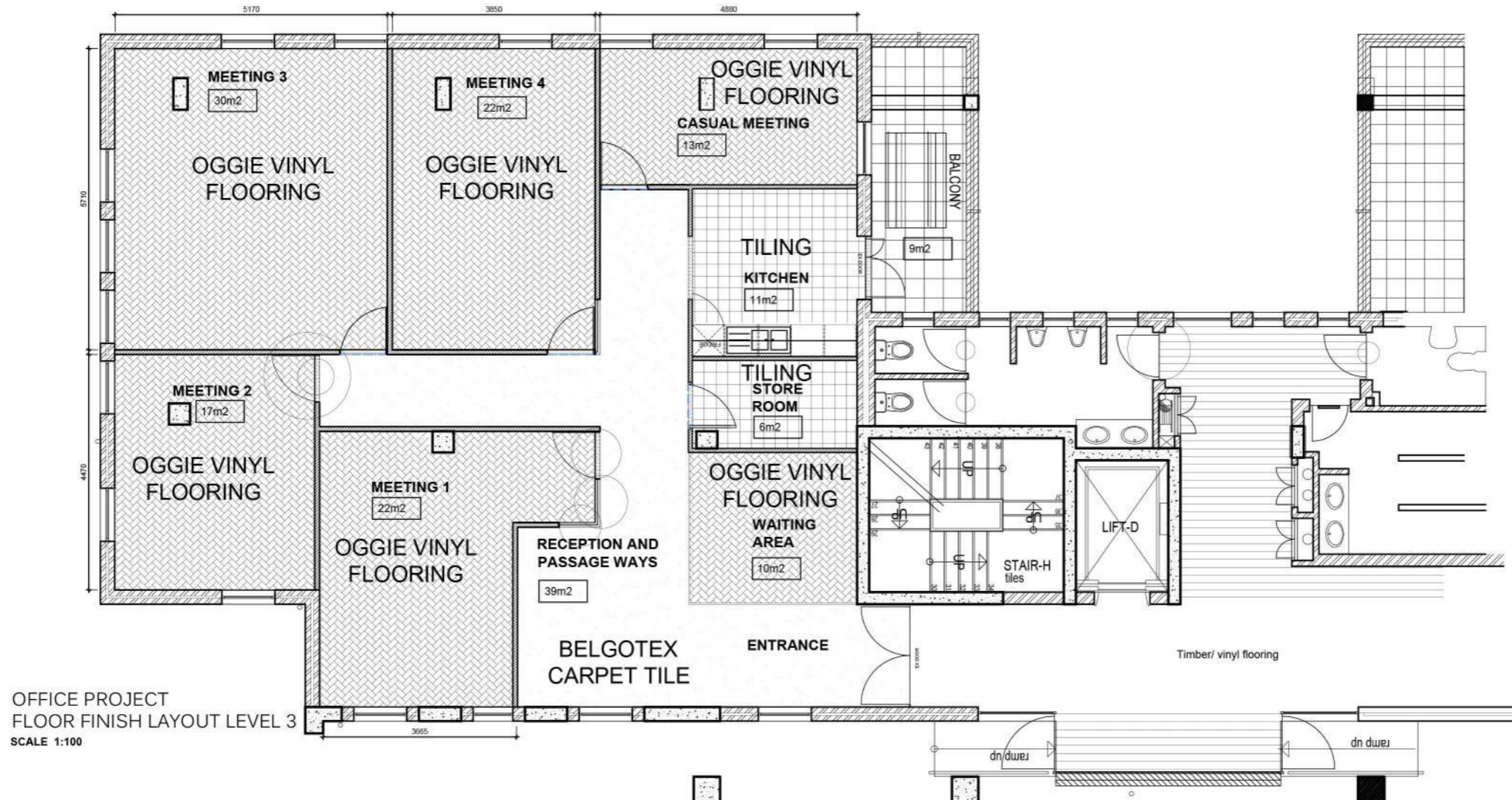
DRAWING NOTES

REVISIONS

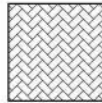
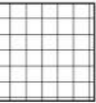



0	DATE	DESCRIPTION
Item	date	description

project title	
BUILDING CONSTRUCTION	
drawing description	
WORKING DRAWING PACKAGE NEW BUILD PLAN	
drawing number	scale
100.2	1:100
project number	date
100	15.08
designer	revision
CHELSEA	REV.2
client approval	

LEVEL 3



OFFICE PROJECT
FLOOR FINISH LAYOUT LEVEL 3
SCALE 1:100

-  HERRINGBONE VINYL FLOOR PLANKS OGGIE 15-ABCD-90 BRUT-VG 100 m²
-  FS DAMERO CERAMIC TILE TILITORIA 17m²
-  BERBERPOINT 650 BROADLOOM BELGETEX 39 m²
-  7 METERS MTRIM STANDARD STAINLESS STEEL STRAIGHT EDGE TRIM
-  NEW 150MM SKIRTING WITH DETAIL TO MATCH THE SKIRTING ON THE OTHER SIDE

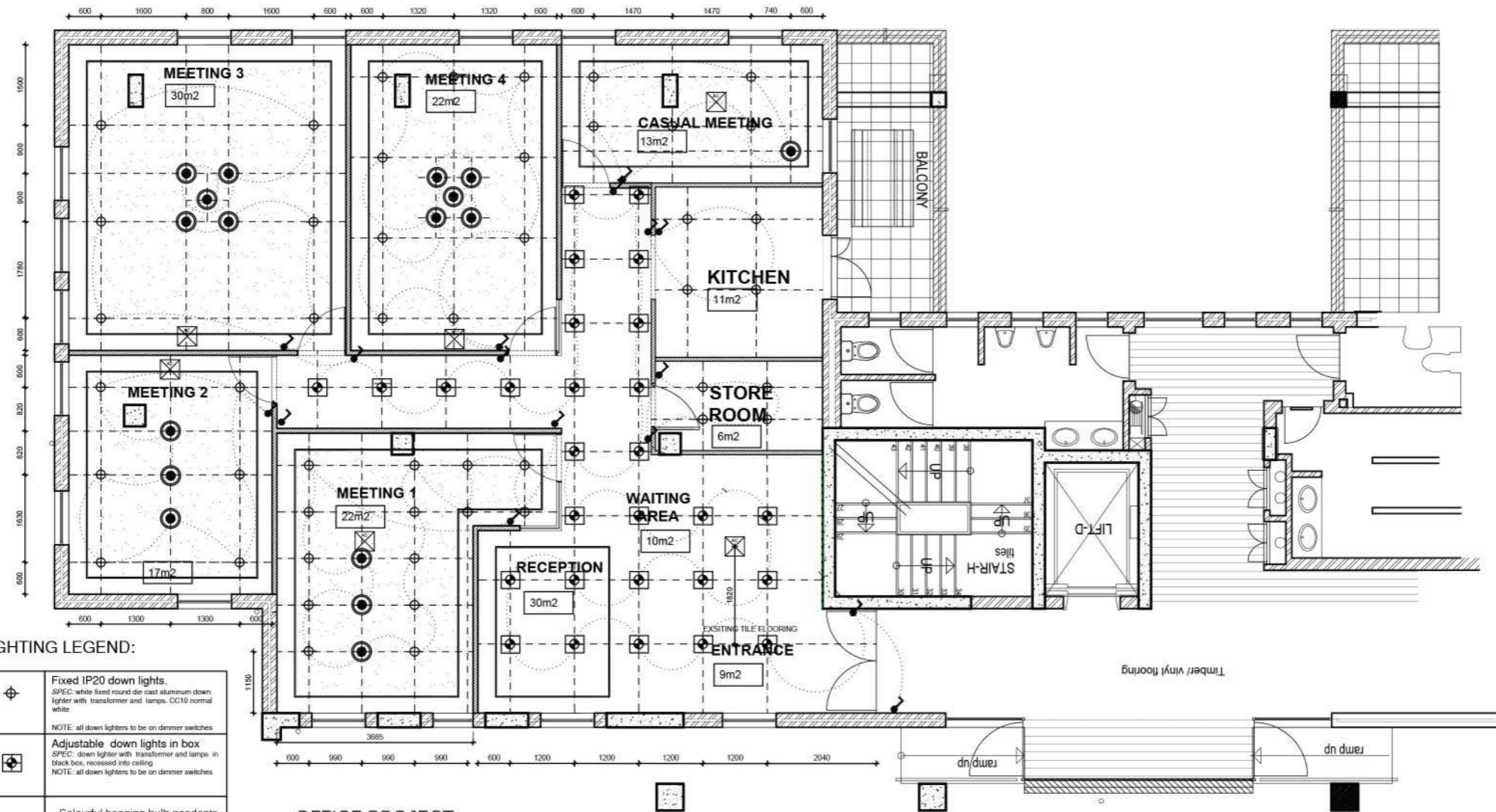
TRADE NOTES	
Copyright over all design and drawings shall remain the intellectual property of Design Time Studio and any provision to the contrary in terms of the Copyright Act No. 63 of 1964 is hereby specifically excluded.	
Reproduction of this drawing or design under any pretence, in whole or in part, without the written consent of Design Time Studio, is strictly prohibited.	
Contractors and subcontractors to verify all levels, heights and dimensions on site, and to check same against the drawings, before putting any work in hand.	
Quality of all materials and workmanship to comply with the relevant SANS and BSS specifications.	
The contractor is responsible for correct setting out on the specified works.	
Contractors are to ensure that all details shown on this drawing are in complete compliance with local authority by-laws and regulations.	
Contractors are to locate and identify existing services on site, and are to protect these from damage through the duration of work.	
Contractors shall be responsible for ensuring the structural stability of all components of their work and ascertain that the main structure is capable of supporting all loads applied thereto.	
Contractors are to ensure that their work, on site, is adequately protected at all times, during construction, and the responsibility for any damage incurred lies with the contractor until final hand over to the client. Contractors and subcontractors are to ensure that all components, glazing panels and structural items fit through all doorways, stairwells and lifts.	
This drawing is not to be scaled. Figure dimensions are to be used at all times.	
Any queries or variations arising from any of the above, must be reported to Design Time Studio for clarification, prior to the commencement of any work.	

DRAWING NOTES	
DRAWING NOTES	

REVISIONS	
0	DATE DESCRIPTION DESCRIPTION
Rev date description	description

Project title	
BUILDING CONSTRUCTION	
Drawing description	
WORKING DRAWING PACKAGE FLOOR FINISH	
Drawing number	Scale
100.4	1:100
Project number	Date
100	15.08
Designer	Revision
CHELSEA	REV.2
Client approval	

LEVEL 3



LIGHTING LEGEND:

	Fixed IP20 down lights. SPEC: white fixed round die cast aluminum down lighter with transformer and lamps, CC10 normal white NOTE: all down lighters to be on dimmer switches
	Adjustable down lights in box SPEC: down lighter with transformer and lamps in black box, recessed into ceiling NOTE: all down lighters to be on dimmer switches
	Colourful hanging bulb pendants SPEC: entrepo large bulbs with colourful cord. NOTE: POSITION TO BE DETERMINED ON SITE WITH DESIGNER
	Switch Spec: CLIPSAL white switches

	AIRCONDITIONING TBC CLIENT. EXISTING WALL MOUNTED UNITS TO BE RE-USED OR NEW DUCTED SYSTEM TO MATCH THE AIRCON IN THE EXISTING MEETING ROOMS.
	SKIMMED AND PAINTED PLASTERBOARD CEILING WITH 25mm DOWN PLASTERBOARD TRIM ALL ROUND. PAINTED WHITE 110m ²

OFFICE PROJECT
LIGHTING LAYOUT LEVEL 3
SCALE 1:100

TRADE NOTES

Copyright over all design and drawings shall remain the intellectual property of Design Time Studio and any provision to the contrary in terms of the Copyright Act No. 63 of 1964 is hereby specifically excluded.

Reproduction of this drawing or design and/or any portion thereof, other than in terms of the Client/Designer Agreement, is strictly prohibited.

Contractors and subcontractors to verify all levels, heights and dimensions on site, and to check same against the drawings, before putting any work in hand.

Quality of all materials and workmanship to comply with the relevant SABS and BSS specifications.

The contractor is responsible for correct setting out on the specified works.

Contractors are to ensure that all details shown on this drawing are in complete compliance with local authority by-laws and regulations.

Contractors are to be liable and identify existing services on site, and are to protect these from damage through the duration of work.

Contractors shall be responsible for ensuring the structural stability of all components of their work and ascertain that the main structure is capable of supporting all loads applied thereto.

Contractors are to ensure that their work, on site, is adequately protected at all times. During construction, and the responsibility for any damages incurred lies with the contractor until final hand over of the site. Contractors and subcontractors are to ensure that all components, glazing panels and slatted louvers fit through all doorways, windows and lifts.

This drawing is not to be scaled. Figured dimensions are to be used at all times.

Any queries or variations arising from any of the above, must be referred to Design Time Studio for confirmation, prior to the commencement of any works.

DRAWING NOTES

DRAWING NOTES

REVISIONS

NO	DATE	DESCRIPTION
0		

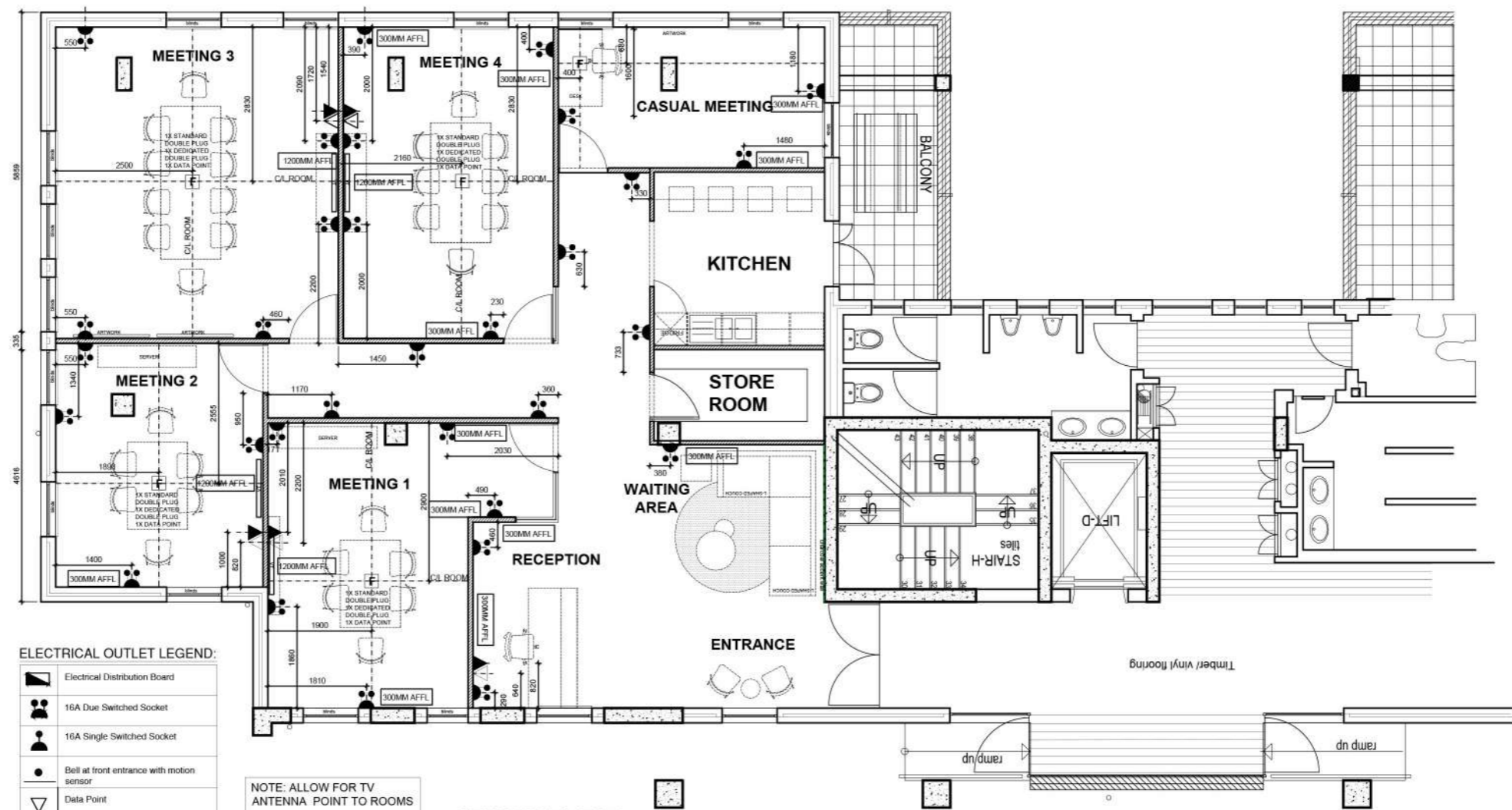
project title
BUILDING CONSTRUCTION

drawing description
WORKING DRAWING PACKAGE ELECTRICAL PLAN

drawing number 100.6	scale 1:100
project number 100	date 22/07
designer CHELSEA	revision REV.1

client approval

LEVEL 3



ELECTRICAL OUTLET LEGEND:

	Electrical Distribution Board
	16A Double Switched Socket
	16A Single Switched Socket
	Bell at front entrance with motion sensor
	Data Point
	Telephone Point
	100mm x 100mm Floor box as per spec
	TV antenna point

NOTE: ALLOW FOR TV ANTENNA POINT TO ROOMS

NOTE: ALL PLUGS ON WALLS TO BE 300mm AFFL UNLESS SPECIFIED.

OFFICE PROJECT
DATA AND ELECTRICAL LEVEL 3
SCALE 1:100

TRADE NOTES

Copyright over all design and drawings shall remain the intellectual property of Design Time Studio and any provision to the contrary in terms of the Copyright Act No. 63 of 1962 is hereby specifically excluded.

Registration of this drawing or design and/or any portion thereof, other than in terms of the Client/Designer Agreement, is strictly prohibited.

Contractors and subcontractors to verify all levels, heights and dimensions on site, and to check same against the drawings, before pulling any work in hand.

Quality of all materials and workmanship to comply with the relevant SANS and BSB specifications.

The contractor is responsible for correct setting out on the specified works.

Contractors are to ensure that all details shown on this drawing are in complete compliance with local authority by-laws and regulations.

Contractors are to locate and identify existing services on site, and are to protect these from damage through the duration of work.

Contractors shall be responsible for ensuring the structural stability of all components of their work and ascertain that the main structure is capable of supporting all loads applied thereto.

Contractors are to ensure that their work, on site, is adequately protected at all times, during construction, and the responsibility for any damage incurred lies with the contractor and that they cover up the site, construction and excavations are to ensure that all components, gassing panels and shapelled items fit through all openings, standards and etc.

This drawing is not to be scaled. Figure dimensions are to be used at all times.

Any queries or variations arising from any of the above, must be requested to Design Time Studio for confirmation, prior to the commencement of any works.

DRAWING NOTES

DRAWING NOTES

REVISIONS

0	DATE	DESCRIPTION
Rev	date	description

project title
BUILDING CONSTRUCTION

drawing description
WORKING DRAWING PACKAGE D&E PLAN

drawing number 100.5	scale 1:100
project number 100	date 15.08
designer CHELSEA	revision REV.2

client approval

TRADE NOTES

Copyright over all design and drawings shall remain the intellectual property of Design Time Studio and any provision to the contrary in terms of the Copyright Act No. 63 of 1978 is hereby specifically excluded.

Reproduction of this drawing or design, either in whole or in part, without the written consent of Design Time Studio, is strictly prohibited.

Contractors and subcontractors to verify all levels, heights and dimensions on site, and to check same against the drawings, before putting any work in hand.

Quality of all materials and workmanship to comply with the relevant SABS and BSS specifications.

The contractor is responsible for correct setting out on the specified works.

Contractors are to ensure that all details shown on this drawing are in complete compliance with local authority by-laws and regulations.

Contractors are to locate and identify existing services on site, and are to protect these from damage through the duration of work.

Contractors shall be responsible for ensuring the structural stability of all components of their work and ascertain that the new structure is capable of supporting all loads applied thereto.

Contractors are to ensure that their work, on site, is adequately protected at all times, during construction, and the responsibility for any damages incurred lies with the contractor and that held over on the site. Contractors and subcontractors are to ensure that all components, glazing panels and structural items fit through all openings, setbacks and site.

This drawing is not to be scaled. Pictured dimensions are to be used at all times.

Any queries or variations arising from any of the above, must be requested to Design Time Studio for resolution, prior to the commencement of any works.

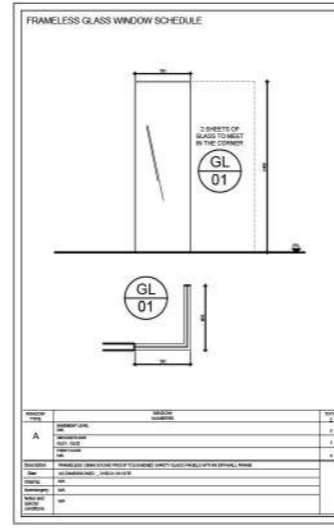
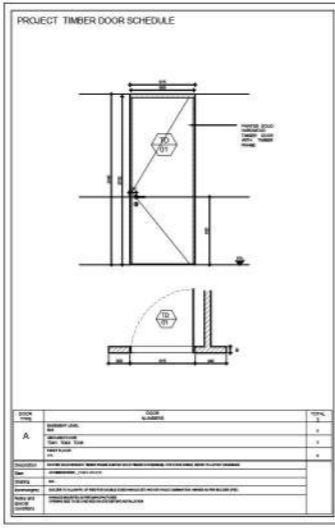
DRAWING NOTES

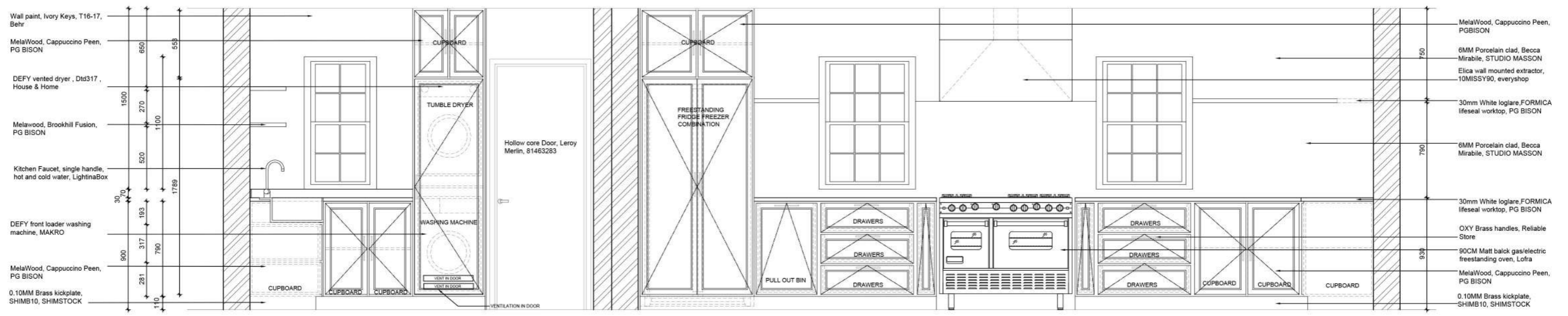
DRAWING NOTES

REVISIONS

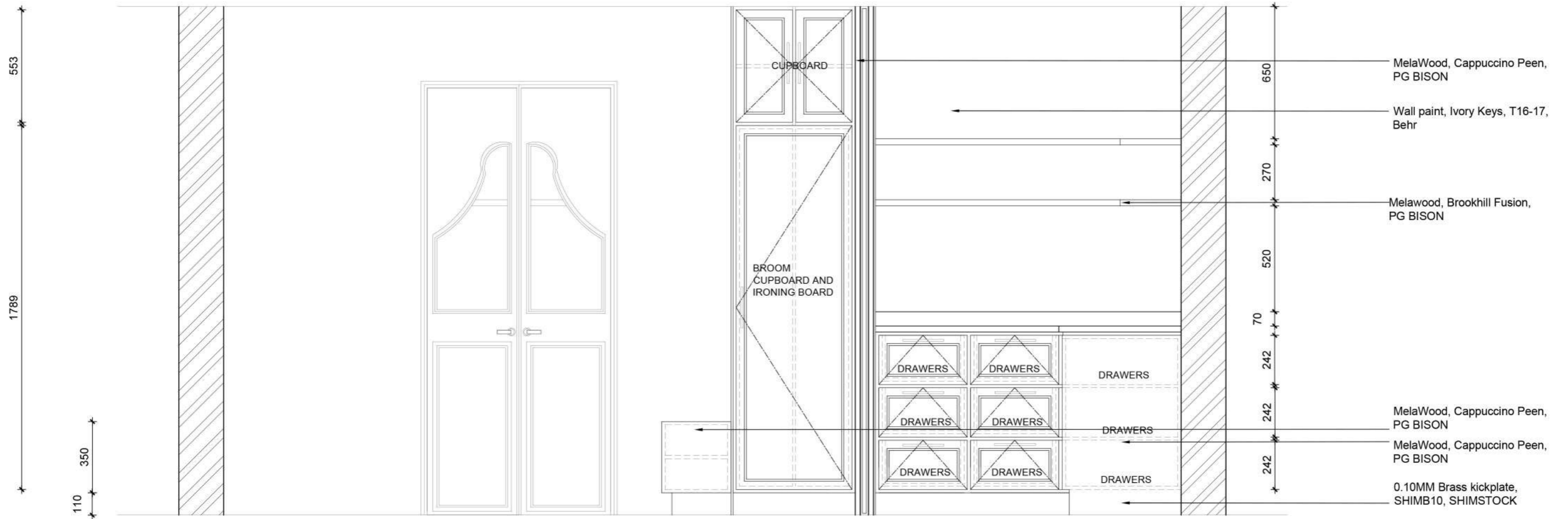
0	DATE	DESCRIPTION
		DESCRIPTION
		DESCRIPTION
		DESCRIPTION
Rev	date	description

project title	
BUILDING CONSTRUCTION	
drawing description	
WORKING DRAWING PACKAGE D&W SCHEDULE	
drawing number	scale
100.3	1:100
project number	date
100	15.08
designer	revision
CHELSEA	REV.2
client approval	

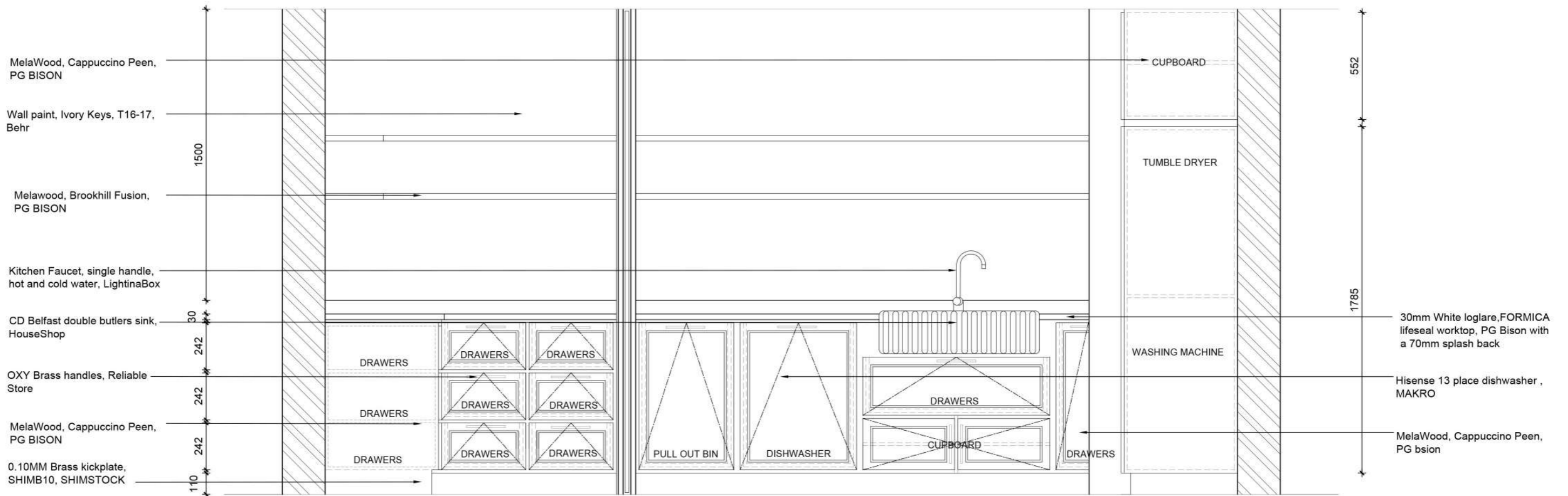




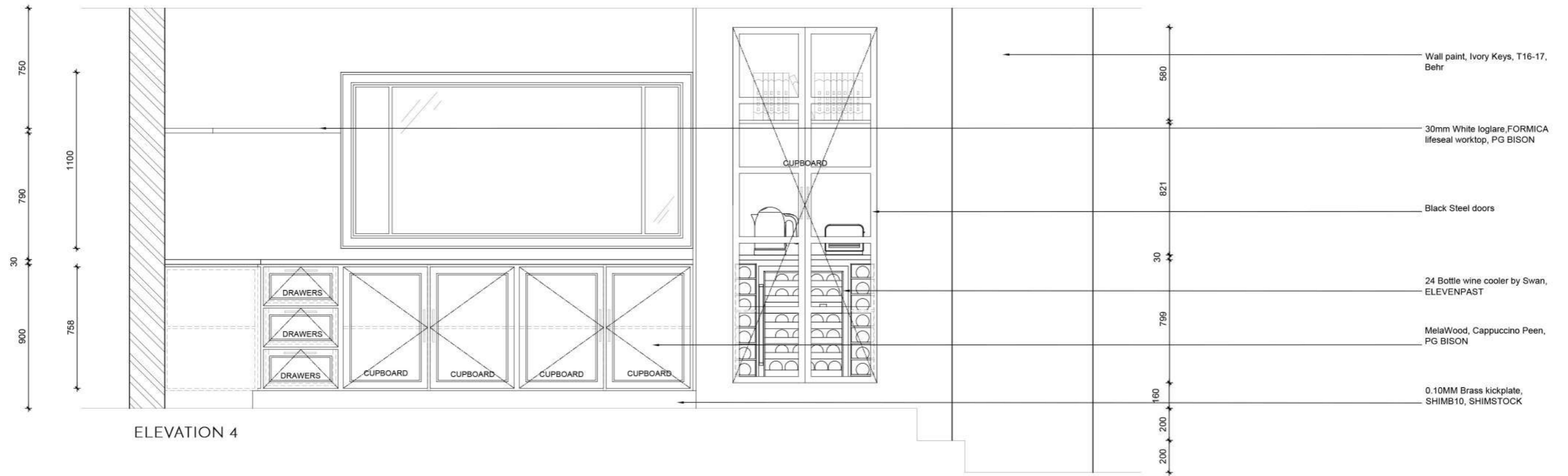
ELEVATION 1



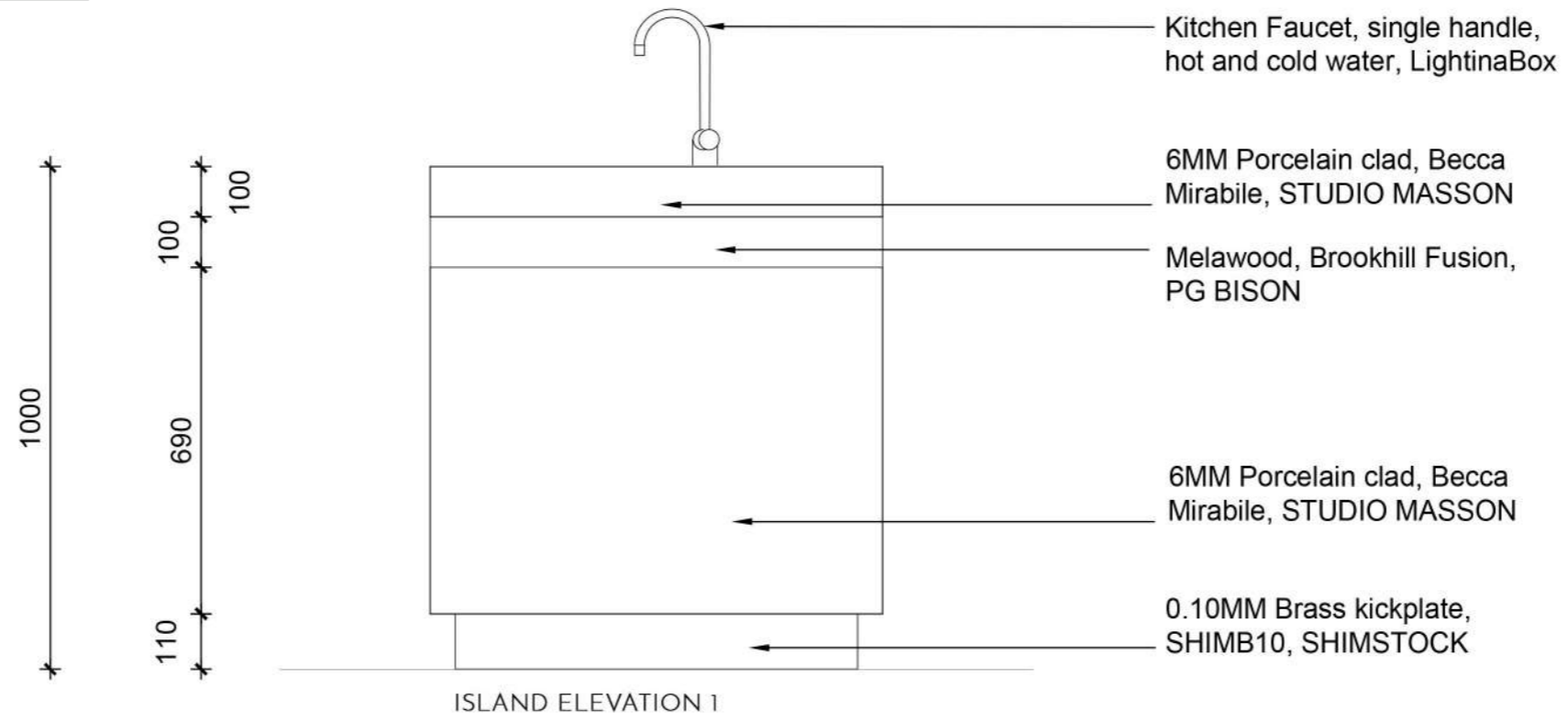
ELEVATION 2

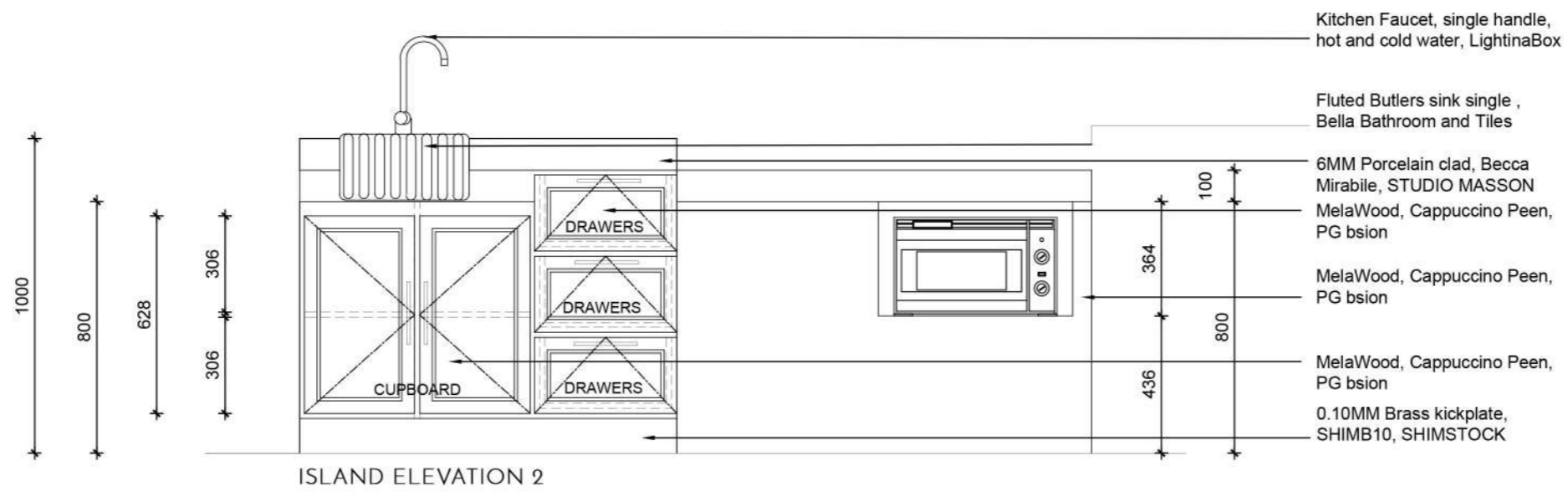


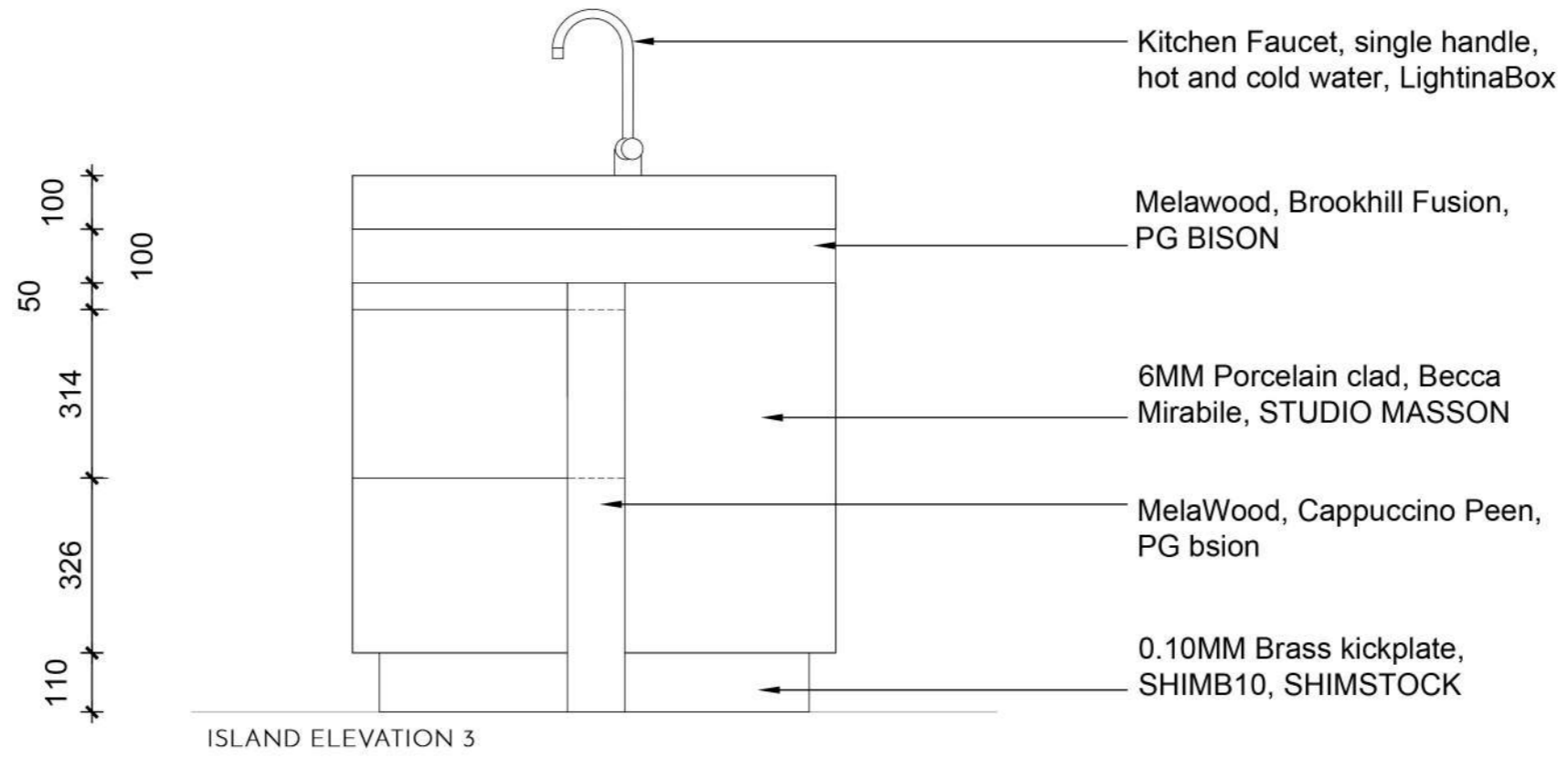
ELEVATION 3

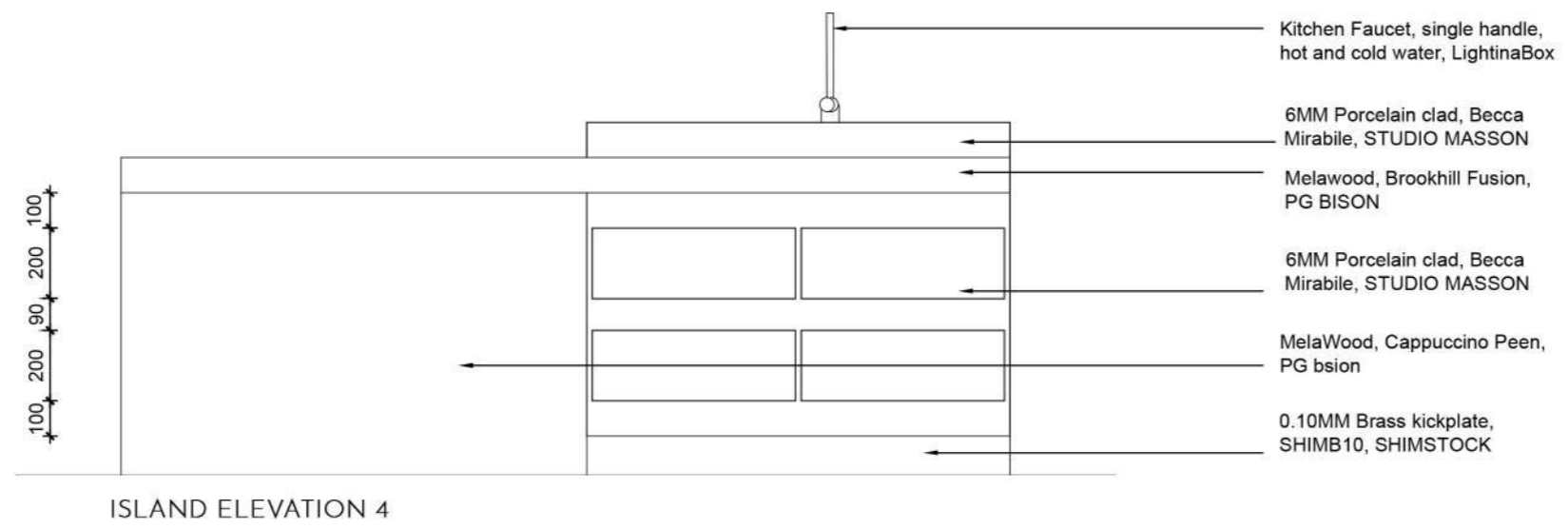


ELEVATION 4









ISLAND ELEVATION 4

“Design can be art. Design can be aesthetics. Design is so simple, that’s why it is so complicated “

Paul Rand

