

SH

Serena Frank

INTERIOR DESIGN PORTFOLIO



I am Serena Frank

Born to Swiss and Italian parents and raised in Switzerland and South Africa. After graduating from the German International School in Cape Town it was inevitable that the design world was the environment for me as I am keenly aware of visual aesthetics and detail. I am a creative and motivated person. I enjoy all residential design and hospitality projects.

01 STRATA | PG BISON
HOSPITALITY DESIGN

05 LLANDUDNO VILLA
RESIDENTIAL DESIGN

09 DUNE
OBJECT DESIGN

02 FERNWOOD | HOUSE GESS
RESIDENTIAL DESIGN

06 CABIN DESIGN | STAY UNIQUE
COMMERCIAL DESIGN

10 TECHNICAL DRAWINGS

03 ON Q | CUBE DEVELOPMENT
RESIDENTIAL DESIGN

07 BARBER SHOP | BARNET FAIR
COMMERCIAL DESIGN

04 BOXWOOD | THE LUXX
COMMERCIAL DESIGN

08 KSA | KITCHEN DESIGN
RESIDENTIAL DESIGN



01 STRATA | PG BISON HOSPITALITY DESIGN

BRIEF

We were tasked to design a dream oasis for content creators and location scouts consisting of a luxury residence with entertainment areas and landscaped surrounds. It is all about experience and creating an instagrammable location. The design must celebrate eating, sleeping, bathing and socializing using the four elements: fire, water, earth and air.

CONCEPT

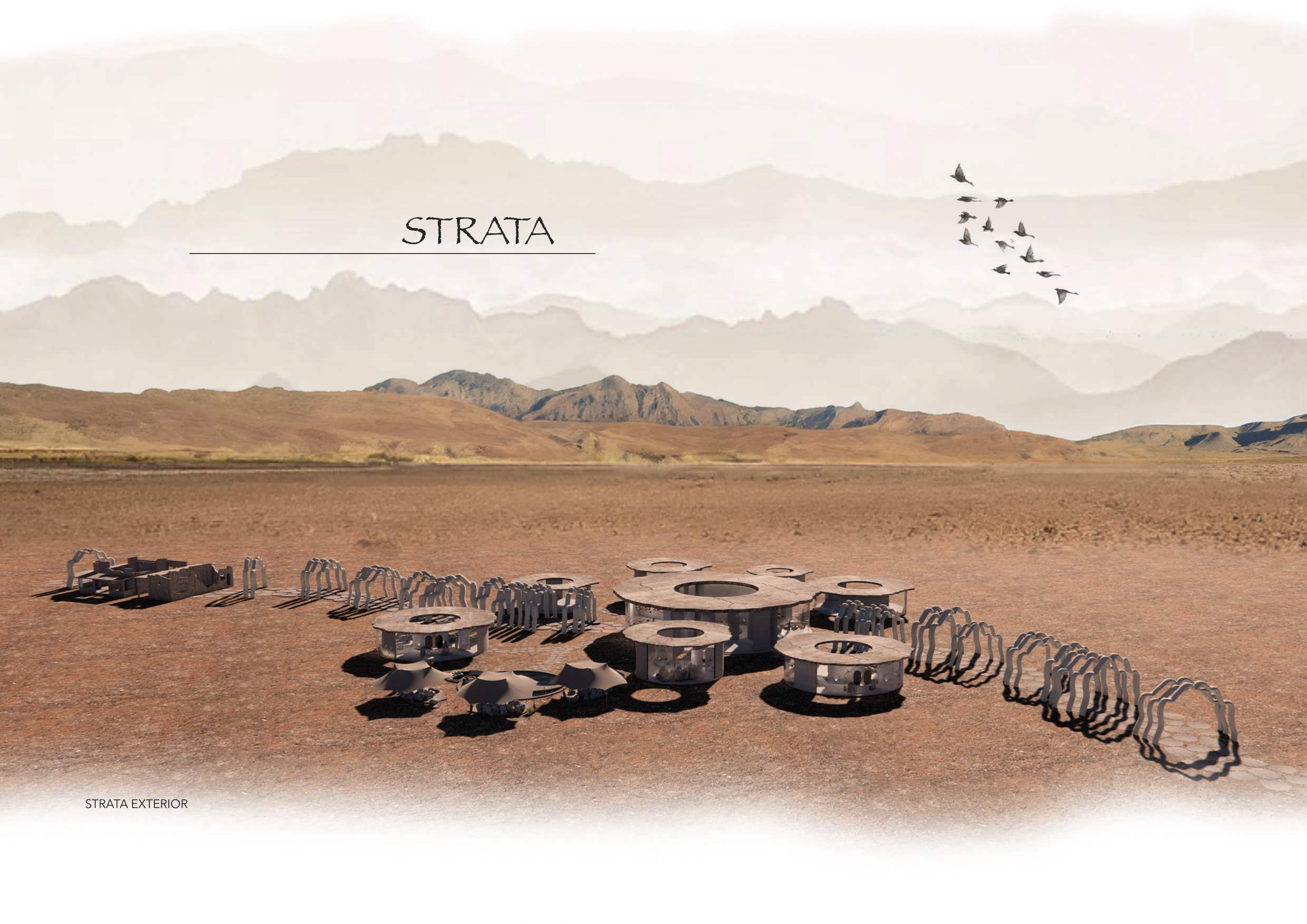
The Karoo has an incredibly well preserved ecosystem and one of the most important fossil deposits in the world. The concept has been based on fossil and archaeological stratification slabs to represent the strata where fossilisation was formed. Pathways lead the client to discover different experiences making the client interact with the space as an explorer of "fossilisations as experiences". The interiors reflect the barren and rocky semi-desert of the Karoo and gives the feeling of being part of the environment while luxury suites emulate fossil finds. Interiors mirror the Karoo's semi-desert landscape, offering an immersible experience. This visually engaging oasis caters to location scouts and content creators. The structures harmoniously blend the four elements, especially water, a vital part in fossil formation. A celebration of basic human needs, the design intertwines sustenance, resting, bathing, and socializing, epitomizing the Karoo's allure.

> PLACED TOP 9 - 2023 PG BISON COMPETITION



STRATA

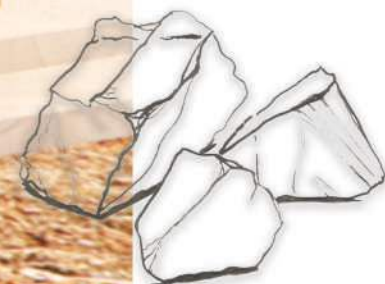
STRATA EXTERIOR







RECEPTION AREA TO THE STRATA





EATING EXPERIENCE WITH INTERACTIVE COOKING
CLASSES WITH KAROO INSPIRED FOOD



OPEN BAR EXPERIENCE WITH LOCAL
BEERS, WINES AND SPIRITS



SONGOLO - HALDANE MARTIN



CAMARA LIGHTS



TOBO CHAIR



CUSTOM MADE



ASH WOOD STOOL



WATER



AIR



EARTH



FIRE

COURTYARD WITH FOSSIL POOL AND
ABSTRACT SKELETON INSTALLATION







LIVING IN LUXURY SUITE



LUXURY SUITE | KITCHEN LOUNGE AREA



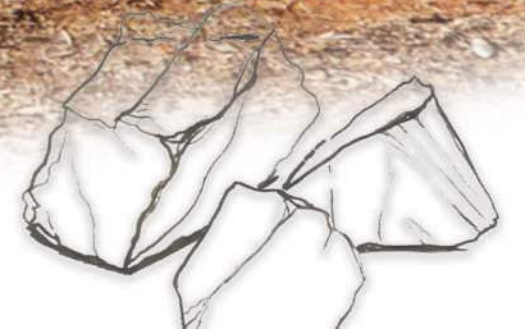
POD SUITE | BATHROOM FOR SMALL SUITE



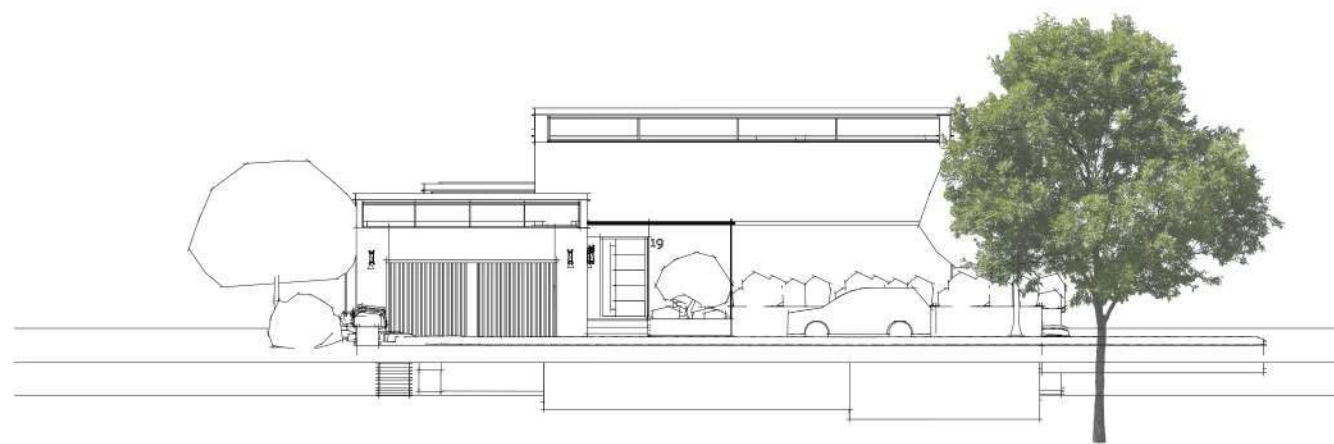
BATHROOM IN LUXURY SUITE



OUTDOOR SOCIALIZING BATHING AREA



 PG BISON



04 FERNWOOD RESIDENTIAL DESIGN

ABOUT

We were tasked to design a new house in the Fernwood estate to accomodate a family. The property had to be designed in a way to optimize the view.

CONCEPT

The surroundings in Knysna are green with a lot of natural elements, which I have incorporated into my design by using natural materials. The flow of the house is open plan with many sliding doors and windows. This and the mono-pitch roof help to bring light into the entire space. Additionally, by creating many large windows, I have prioritized the importance of having an all around view. The floating staircase is a big feature of the house, as the plants below it incorporate the natural surroundings of the property.



FERNWOOD EXTERIOR



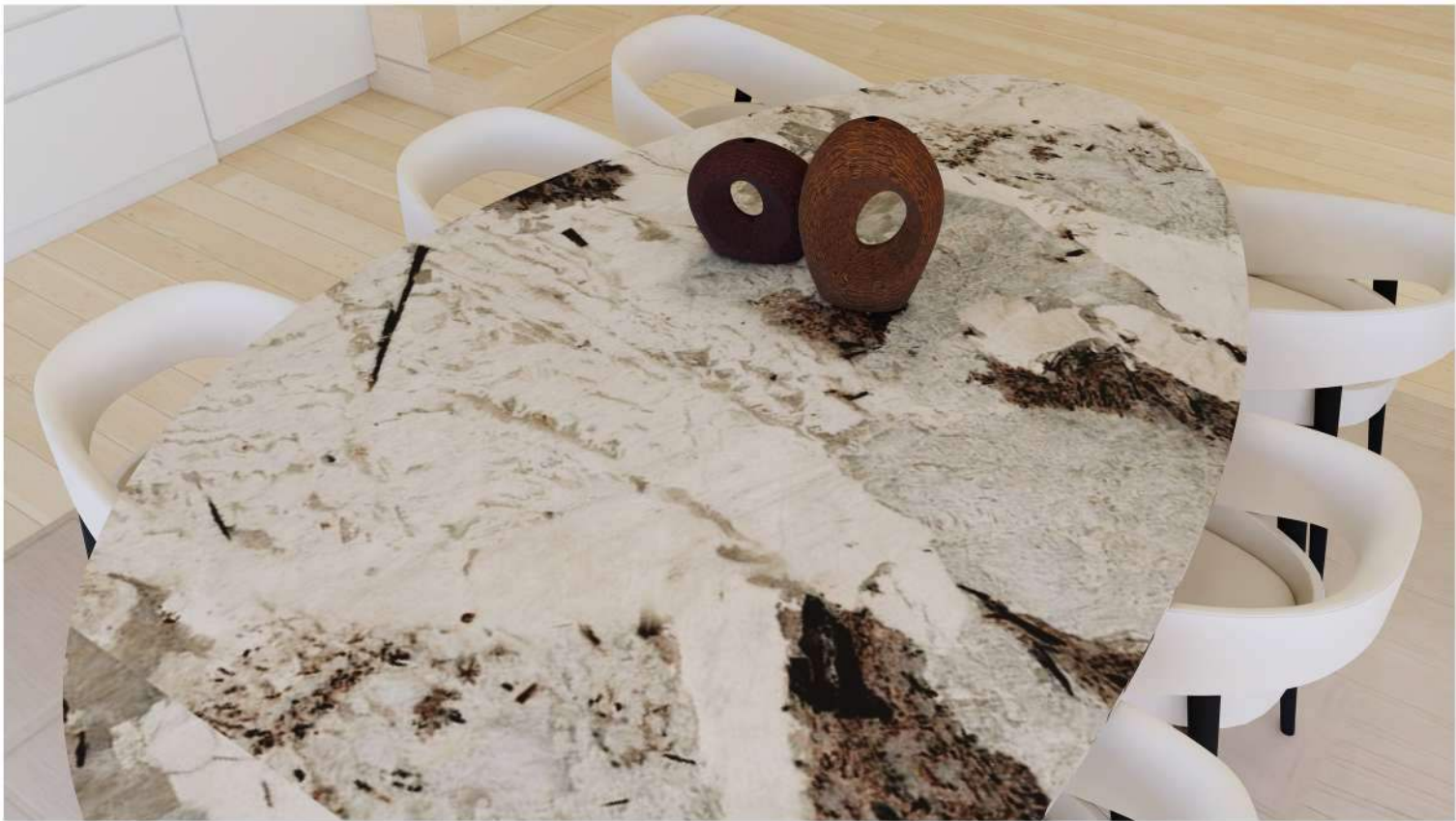
FLOOR PLAN | NTS



LOUNGE AREA WITH BOOKSHELF AND FIREPLACE



DINING ROOM WITH KITCHEN IN THE BACKGROUND



CUSTOM MADE DINING TABLE DETAIL



LOUNGE DETAIL



1. CUSTOM MADE DINING CHAIR 2. MODERN
ABSTRACT PAINTING FROM ARTEXPLORE 3. TO
BE ONE | OKHA 4. CUSTOM MADE SIDE TABLE



VIEW FROM DINING ROOM TO ENTRANCE / STAIRCASE AND WINE / COFFEE STATION



MASTER BEDROOM



MASTER BATHROOM







03 CUBE DEVELOPMENT | ON Q RESIDENTIAL DESIGN

BRIEF

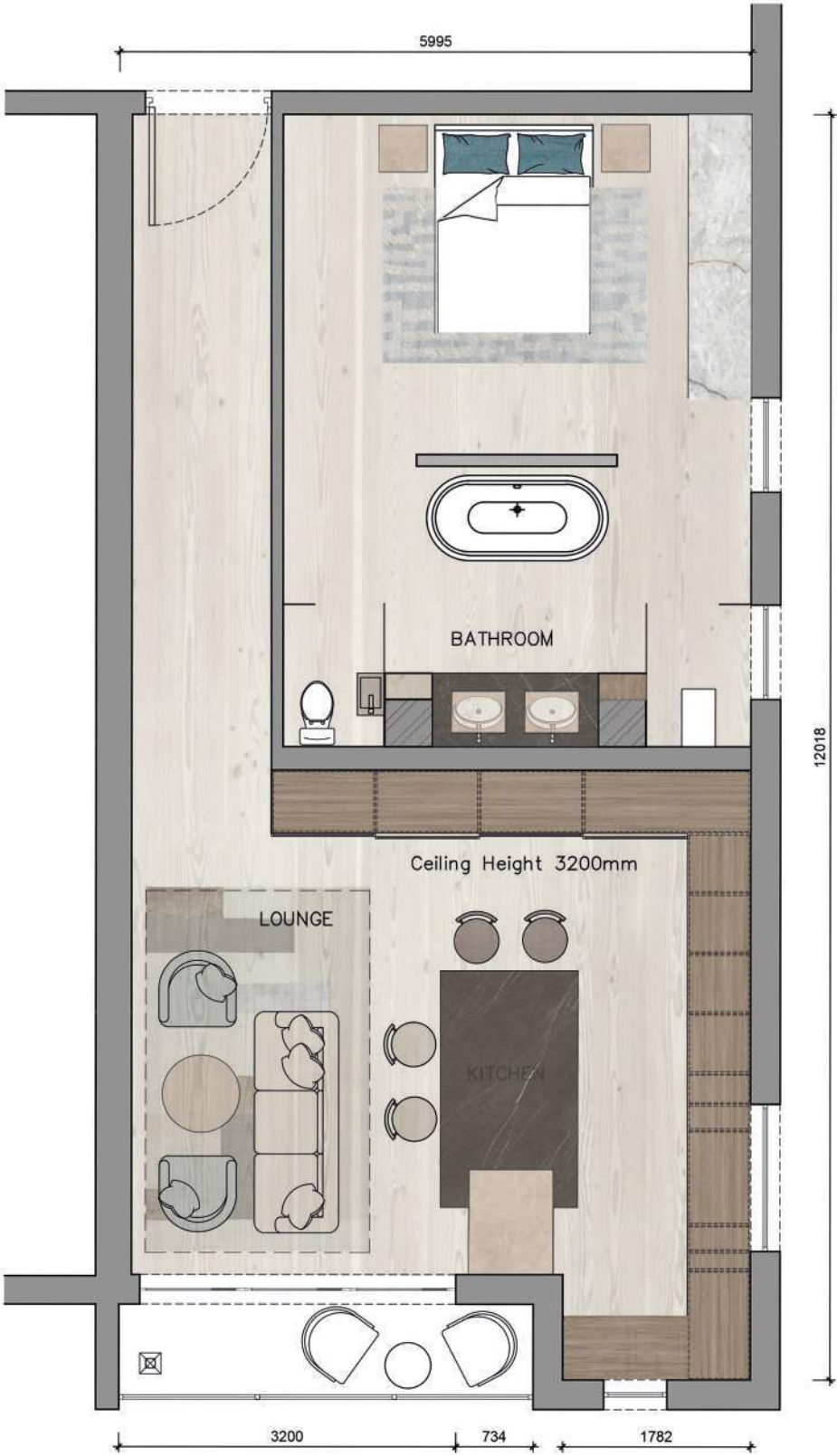
We were tasked to design one of the three 'show apartments' in order for clients to select their chosen purchase. We were asked to choose a design aesthetic and to carefully consider this when designing the apartment.

ABOUT

The beautiful one bedroom apartment showcases a contemporary look with a fairly open floor plan. The main entrance of the apartment leads into the lounge area with a stunning backdrop of Cape Town CBD and Table Mountain. There is plenty of storage space in this apartment, situated all around the kitchen as well as the bathroom. The lounge area includes a cozy electric indoor fireplace accompanying the light blue touches on the furniture. The bedroom includes an open plan bathroom divided by a free standing wall at the foot of the bed. The toilet however may be entered either through the bedroom or the main passage way. Despite the small size of the apartment, the openness and flow gives this space an overall bigger feel and elegant look. Overall this apartment is perfect for an individual or couple looking for an escape from Cape Town's busy city life with the comfort of a maintainable homely space.



LOUNGE AND KITCHEN IN ON Q SHOW APARTMENT





LOUNGE WITH FIREPLACE

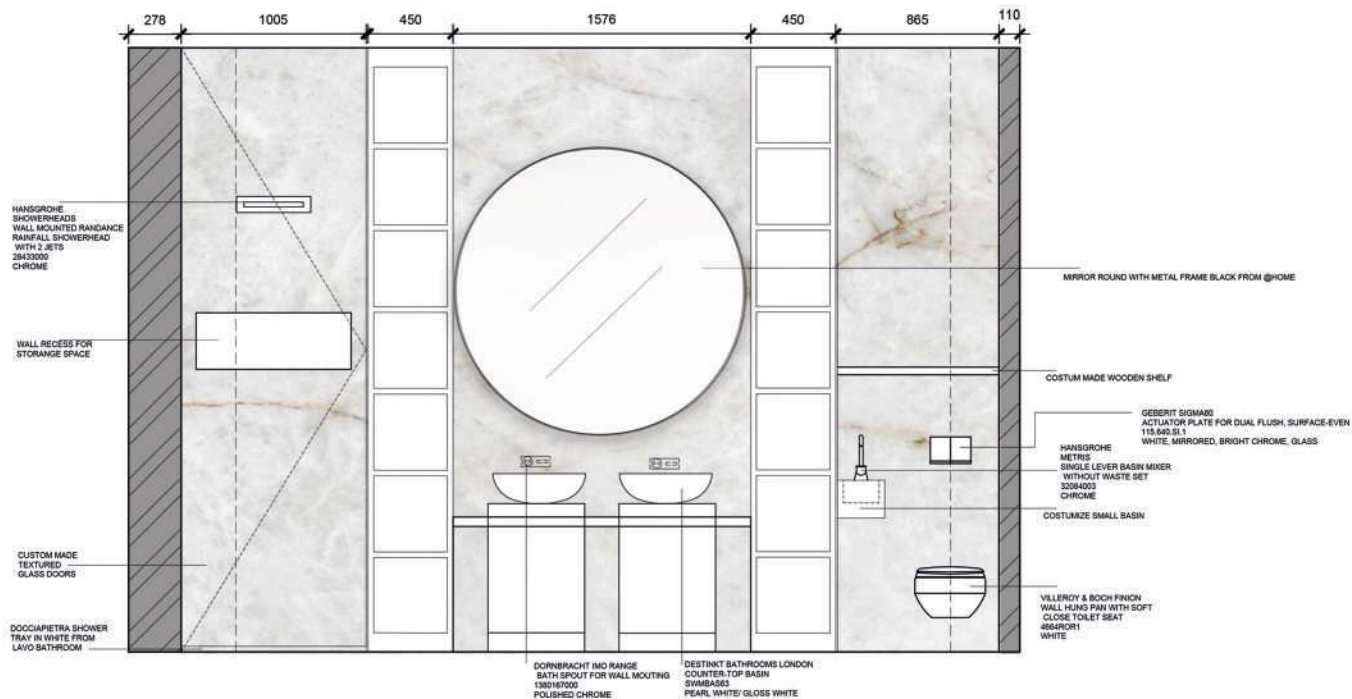
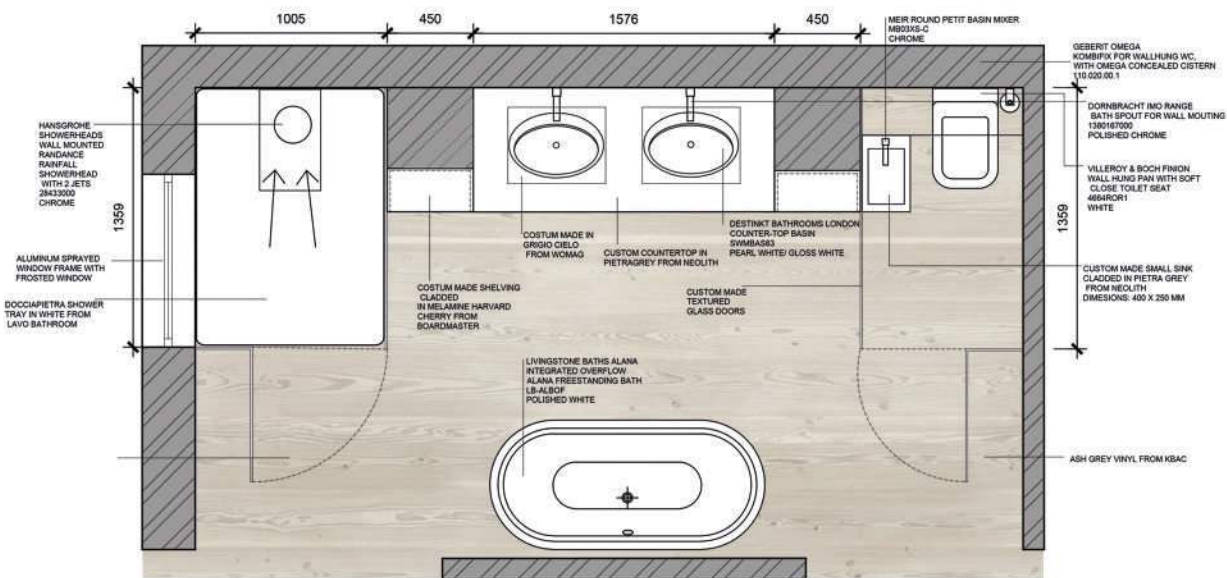




BEDROOM IN ON Q APARTMENT



BEDROOM IN ON Q APARTMENT

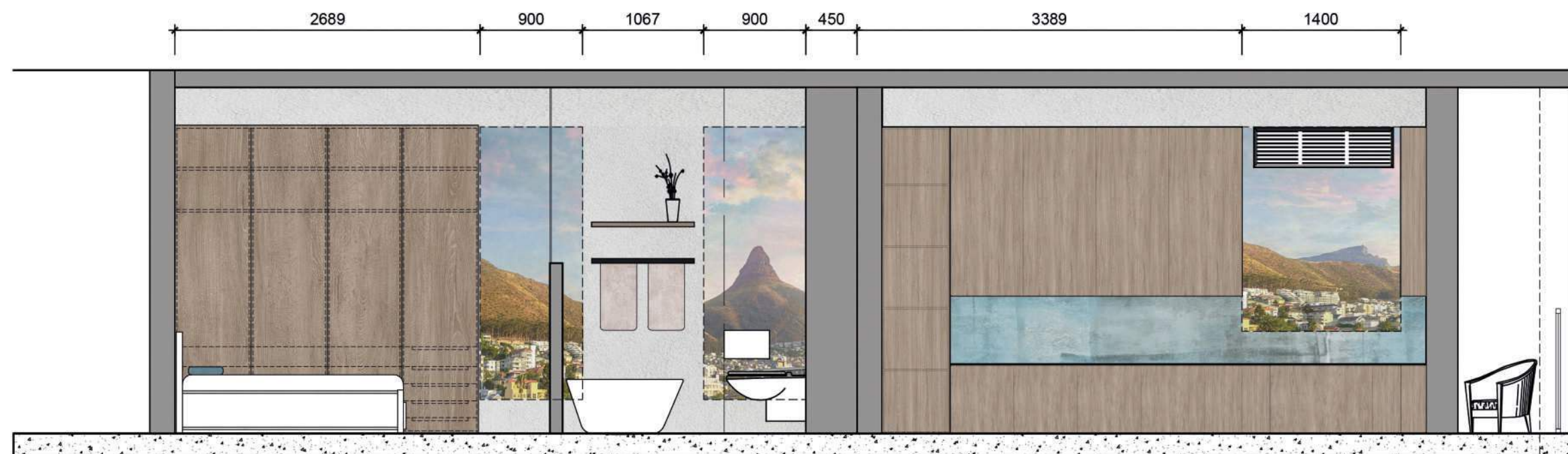




1. BUBLE CHANDELIER | LIGHTING.CO.ZA 2. TOLEDO VELVET STOOL | @HOME 3. WOOD SLATTING



6. BARSTOOL | @HOME 7. CUSTOM MADE LIGHT 8. APPARATUS STUDIO MEDIAN SCENCE | MOOILIGHT 9. WHITE SOFA | WEYLANDTS 10. REEVES CHAIR | MINOTTI



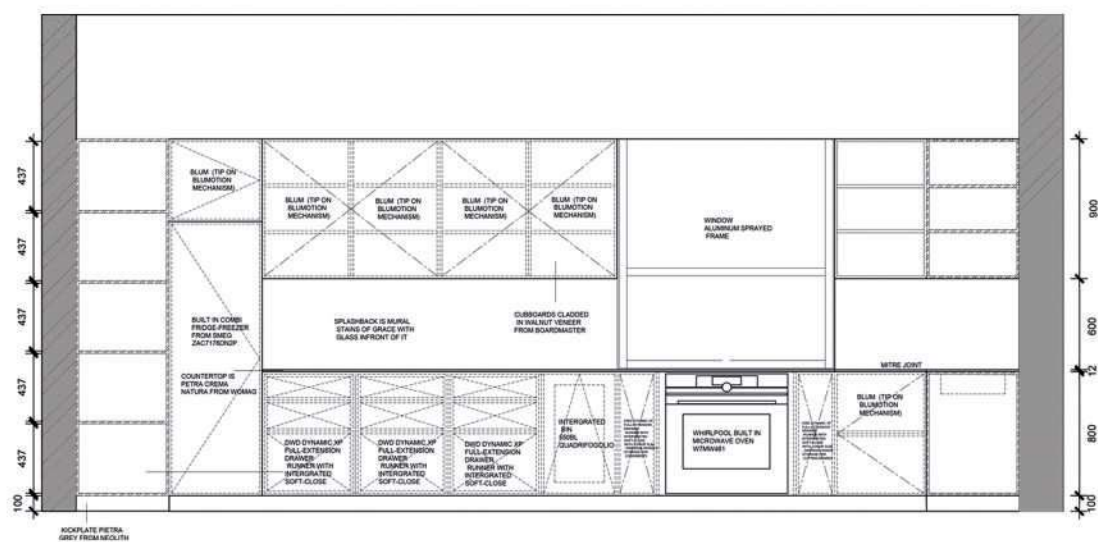
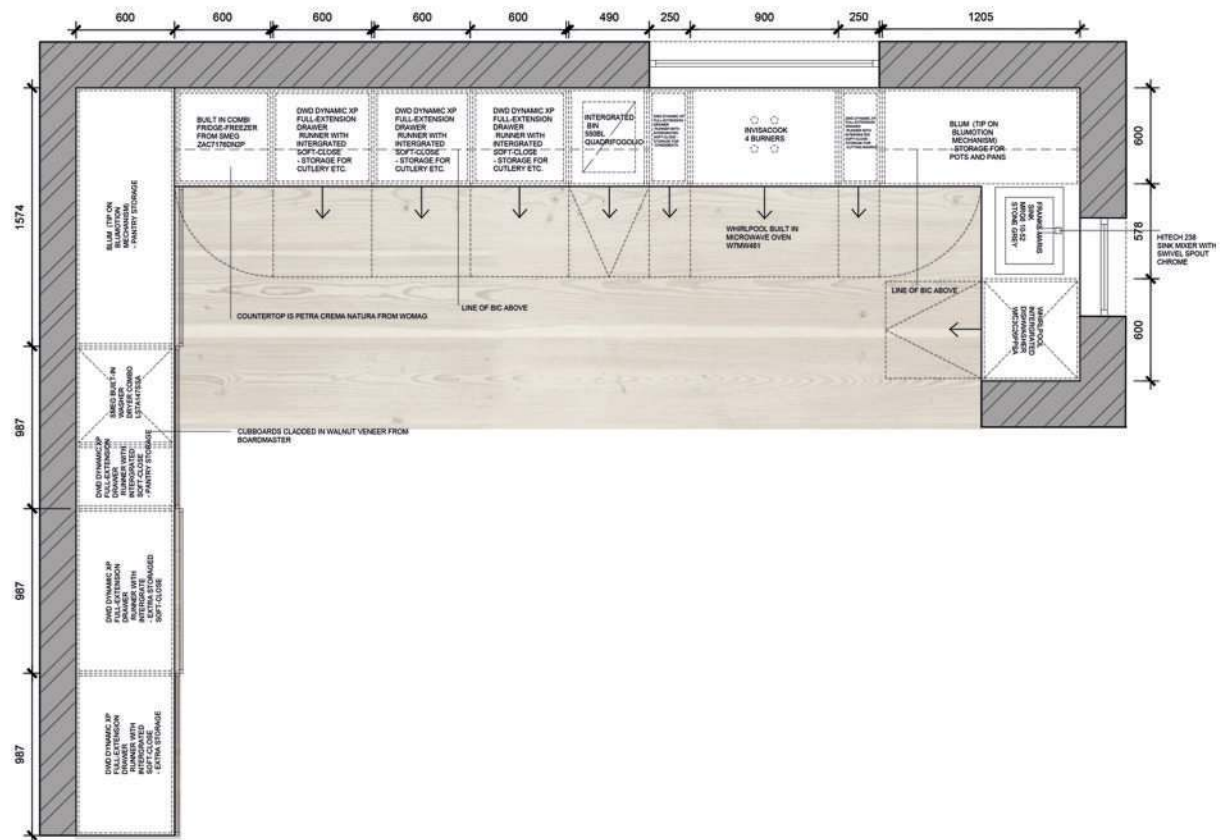
ELEVATION OF APARTMENT



1. SEEM AQUA BY HERTEX FROM ON ARMCHAIRS AND OTTOMAN 2. PRIME SANDSTONE FROM HERTEX USED ON ON COUCH 3. MAGICAL (UNBACKED) TIMBER FROM HERTEX USED ON DINNING CHAIRS 4. ASH GREY VINYL FROM KBAC USED FOR FLOORING IN THE WHOLE APARTMENT 5. BRASS FITTING USED FLOOR FINISHES IN THE APARTMENT 6. AMERICAN SILVER FROM WOMAG USED AS FEATURE WALL 7. TEXTURED GLASS FROM PEAK COOK GLASS USED ON THE BATHROOM DOORS 8. HIMALAYA CRISTAL FROM NEOLITH USED AS FEATURE WALLS 9. WALNUT VENEER FROM BOARD MASTER USED FOR CUPBOARDS, KITCHEN AND SHELFING 10. FLUTTED GLASS FROM PEAKCOOK GLASS USED FOR CUPBOARDS IN KITCHEN 11. PETRA CREMA NATURA FROM WOMAG USED ON VANITY AND KITCHEN TABLE 12. GRIGIO CIELO FROM WOMAG USED AS FEATURE WALL 13. PIETRA GREY FROM NEOLITH USED ON TABLE TOP AND VANITY



DETAIL OF KITCHEN WITH SLIDING BUILT-IN CUPBOARDS FOR EXTRA STORAGE





02 BOXWOOD | THE LUXX COMMERCIAL DESIGN

BRIEF

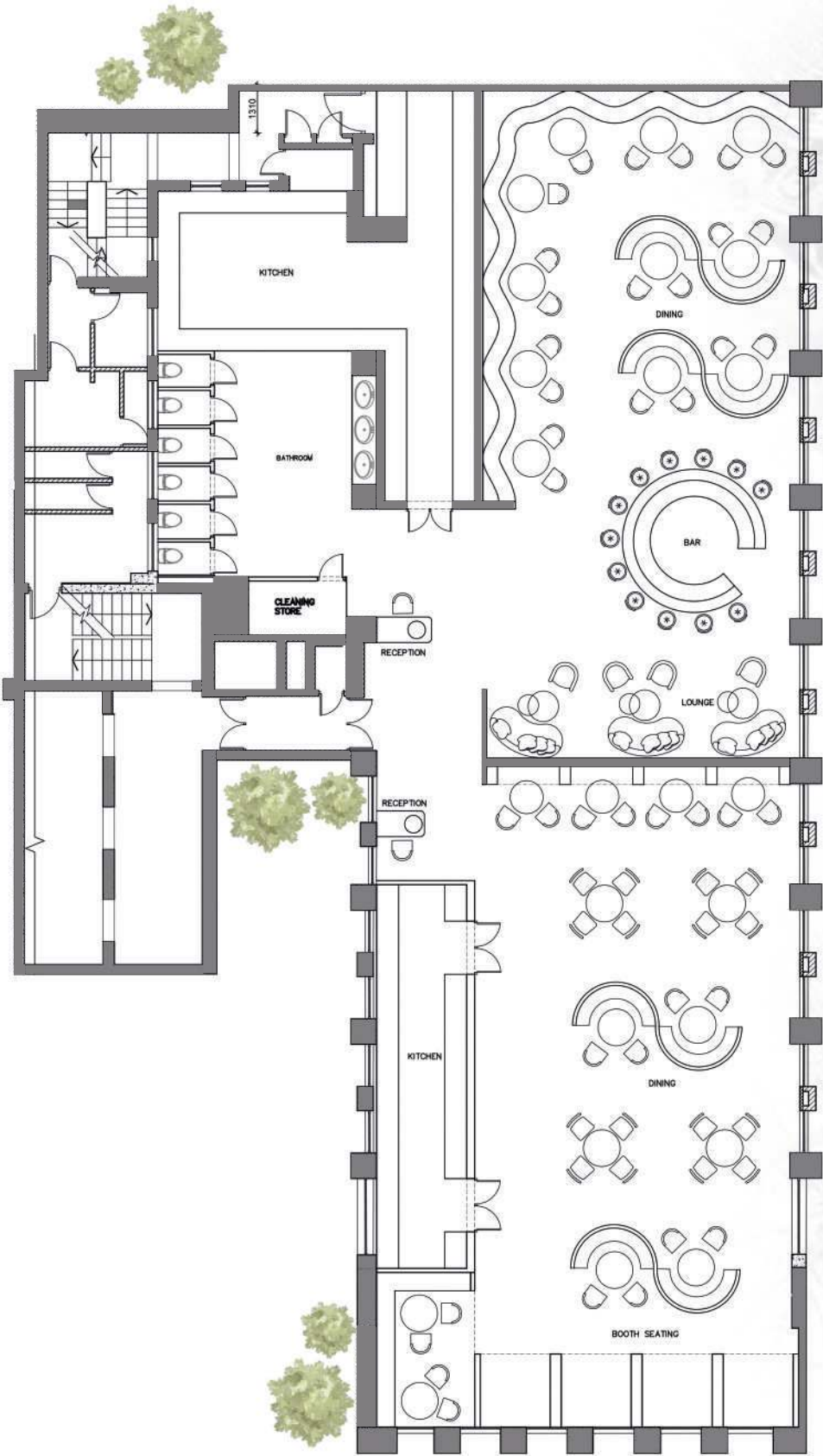
We were tasked to design a city block along Strand, Loop and Bree street with a wide range of possibilities by the development company Boxwood. The primary objective is to embrace creativity and uniqueness. To achieve this, consider factors such as the needs of the greater CBD.

CONCEPT

The Cape Town CBD is a bustling city comprising of dynamic businesses, social activities and night life. It is a perfect central place from which to explore the Mother City. For this reason I have designed a boutique hotel and life style centre offering entertainment such as a casino, a design/art gallery, shops, apartments, bar/lounge as well as a collection of restaurants providing the best of global cuisine under one roof. The building will also include a hamman (spa) for physical detoxification and deep relaxation. The rooftop also includes an infinity pool and a lounge/bar area.



BOXWOOD EXTERIOR





DINING SEATING OF MOROCCAN RESTAURANT



DINING SEATING OF MOROCCAN RESTAURANT



BOOTH SEATING IN MOROCCAN RESTAURANT



1. MOROCCAN LIGHT 2. CUSTOM-MADE SIDE TABLE 3. PUNTO DINING CHAIR LAVA | WEYLANDTS 4. NGWAN-YA PENDANT 5. TURRENT GOLD TABLE LAMP 6. EDEN-ROCK ARMCHAIR | ROCHE BOBOIS 7. CUSTOM-MADE COFFEE TABLE



LOUNGE SEATING IN ASIAN RESTAURANT



DINING IN ASIAN RESTAURANT



BUILT-IN SEATING WITH CURVED WALL IN ASIAN RESTAURANT



1.CUSTOM-MADE BRASS HANGING INSTALLATION 2. PALM LEAF DECOR 3. BOLETUS 4 WATT LED PORTABLE BLACK | LIGHTING.CO.ZA 4. BLACK COFFEE TABLE | WEYLADTS 6. 0414 CHAIR | GALLOTTI & RADICE



1. ANTIQUITY SAGE BY VERTEX USED ON SOFA AND CUSHIONS 2. NO IVORY BY HERTEX FOR CHAIRS, SOFAS AND CUSHIONS 3. CONTESSA VELVET RUST BY HERTEX USED IN RESTAURANT CHAIR AND CUSHIONS 4. PERVERADE BRASS USED FOR DIVIDERS 5. BRASS FITTINGS USED FOR ALL BRASS ELEMENTS AND DETAILS 6. ROCK CLADDING REFERENCE USED FOR WALL IN SPA 7. TERRA BY BEST WOOD USED FLOORING IN RESTAURANT 8. CUSTOM MADE WALL PAPER FROM ROBIN SPRONG 9. GREYMIST BRUSHED BY OGGIE FLOORING USED ON TABLES 10. BRASS FITTINGS FOR ALL BRASS ELEMENTS AND DETAILS 11. CUSTOM MADE WALLPAPER FROM ROBIN SPRONG 12. STRATA ARGENTUM FROM NEOLITH 13. TEAL TILE BY STUDIO MASION



05 LLANDUDNO HOUSE RESIDENTIAL DESIGN

Brief

Design a dream space that is perfectly tailored to your preferences, lifestyle, and aspirations. It's an opportunity to bring your imagination to life and craft a sanctuary that reflects your unique personality.

Concept

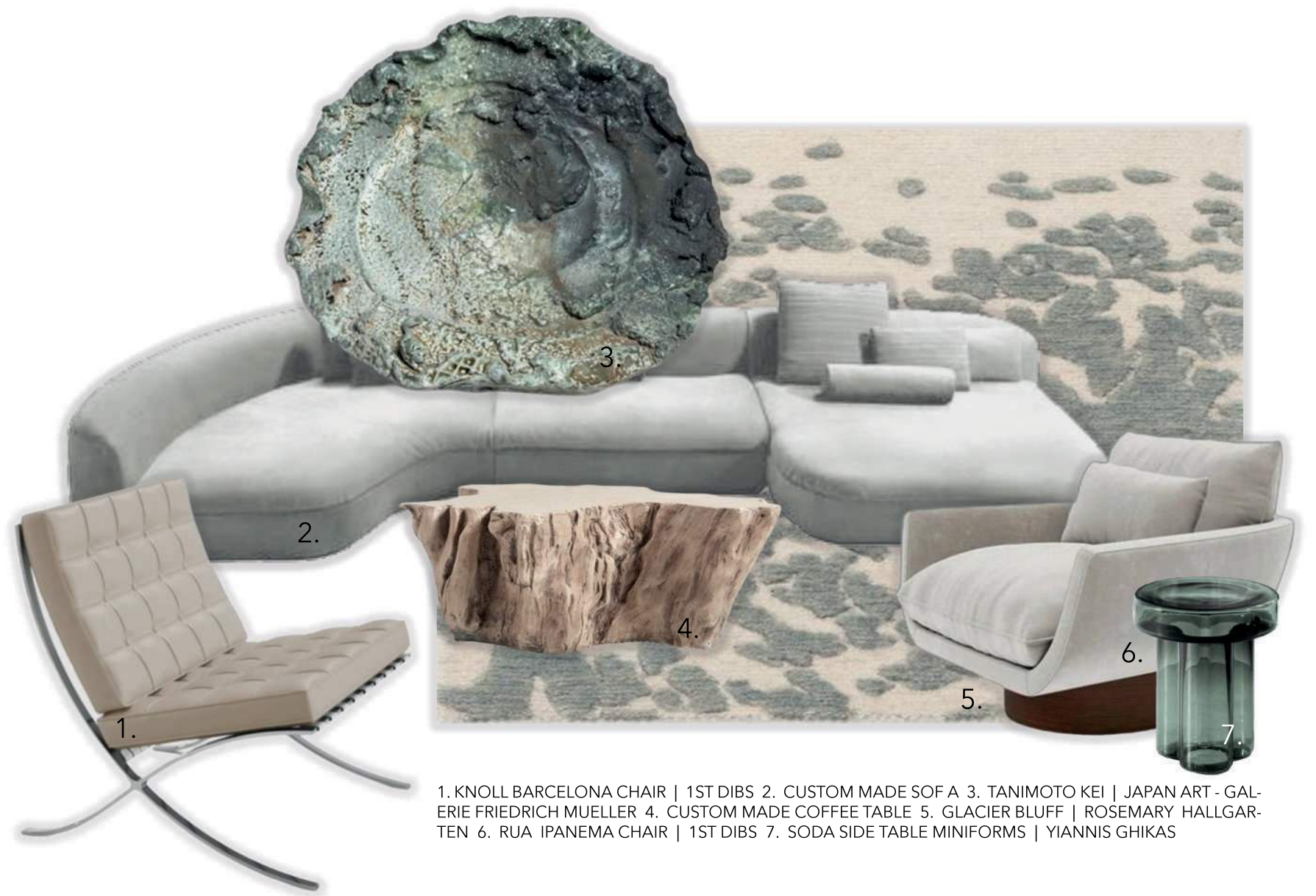
Nestled in the serene hills of Llandudno, Cape Town, this charming house embodies a tranquil, green aesthetic that feels like a breath of fresh air. Surrounded by lush vegetation and framed by the rugged beauty of the surrounding landscape, the home blends seamlessly into its natural environment. Soft, earthy tones of stone and wood complement the vibrant greenery, creating a soothing atmosphere both inside and out.



DINING



COCKTAIL LOUNGE



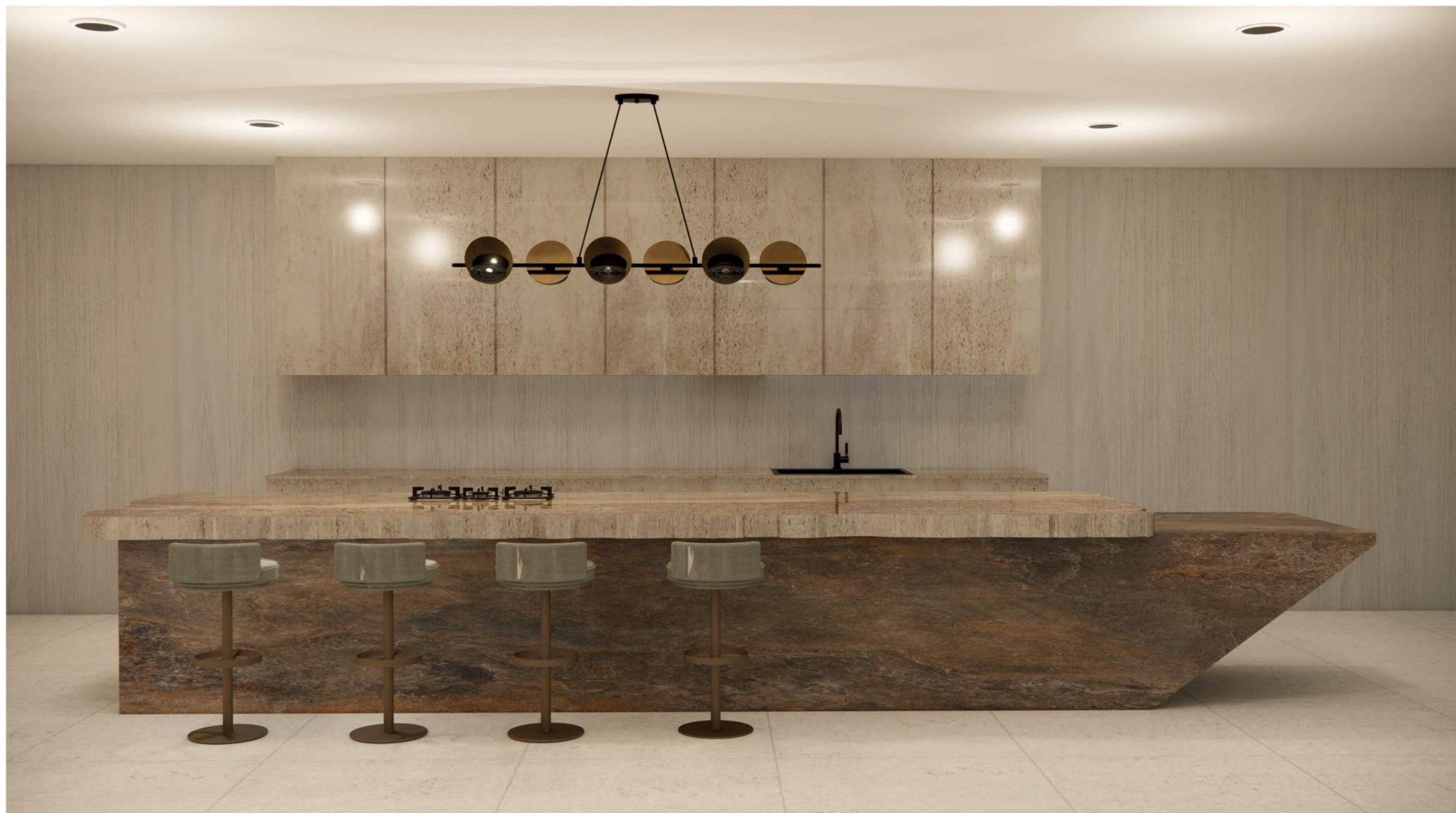
1. KNOLL BARCELONA CHAIR | 1ST DIBS 2. CUSTOM MADE SOF A 3. TANIMOTO KEI | JAPAN ART - GAL-
ERIE FRIEDRICH MUELLER 4. CUSTOM MADE COFFEE TABLE 5. GLACIER BLUFF | ROSEMARY HALLGAR-
TEN 6. RUA IPANEMA CHAIR | 1ST DIBS 7. SODA SIDE TABLE MINIFORMS | YIANNIS GHIKAS



FORMAL LOUNGE



8. ROCK SIDE TABLE | CUSTOM MADE 9. DEAR DIARY DAYBED | STUDIO19 10. RUG | CUSTOM MADE RUG 11. SOFA | CUSTOM MADE SOFA 12. PETRIFIED WOOD SIDE TABLE | BERNHARDT 13. GORLOIS COFFEE TABLE | WAY-FAIR 14. JIA CHAIR | 1ST DIBS 15. SODA SIDE TABLE MINIFORMS | YIANNIS GHIKAS 16. CONTEMPORARY ABSTRACT PAINTING | JEANE MYERS



KITCHEN



1. KOOLHIDE BASI | HERTEX 2. BALNEARIO DRIZZLE | HERTEX 3. SHAUN DORPER | HERTEX 4. RUSTED METAL | CUSTOM MAD E
 5. CRUDO RUSTIC WHITE OIL | HERTEX 6. ARABESCATO LIA | WOMAG 7. BRASS DETAILING 8. CRUDO RUSTIC | CARBO BLACK
 9. CUSTOM MADE METAL 10. CRUDO RUSTIC | PURO ICE



05 CABIN DESIGN | STAY UNIQUE COMMERCIAL DESIGN

ABOUT

We were given the opportunity to create unique and innovative cabin designs for the company Stay Unique. We were tasked to find a picturesque location in the Western Cape.

CONCEPT

Location is luxury. That's why we have decided to place our cabin at the breathtaking Waterfall Farm situated in Citrusdal. The farm is a stone's throw from the beautiful Cederberg mountains and grows lots of citrus fruit trees which can be plucked and used to make fresh juice. The farm offers cycle and hiking paths leading to beautiful waterfalls and rock pools. Drawing inspiration from the surroundings such as the fynbos greenery and the rocky background. We decided to go for a natural color palette and materials. Escape from the hustle and bustle



EXTERIOR OF CABIN





MAIN SPACE IN CABIN





1. IRREGULAR MIRROR | ELEVEN PAST 2. CUSTOM MADE LIGHT 3. MIER ROUND HAND SHOWER WALL MOUNTED | FLUSH 4. WOOD SIDETABLE | CIELO 5. MIER ROUND | FLUSH 6. FREESTANDING BATH | FLUSH



BATHTUB WITH VIEWS OUTSIDE



BASIN WITH VIEWS

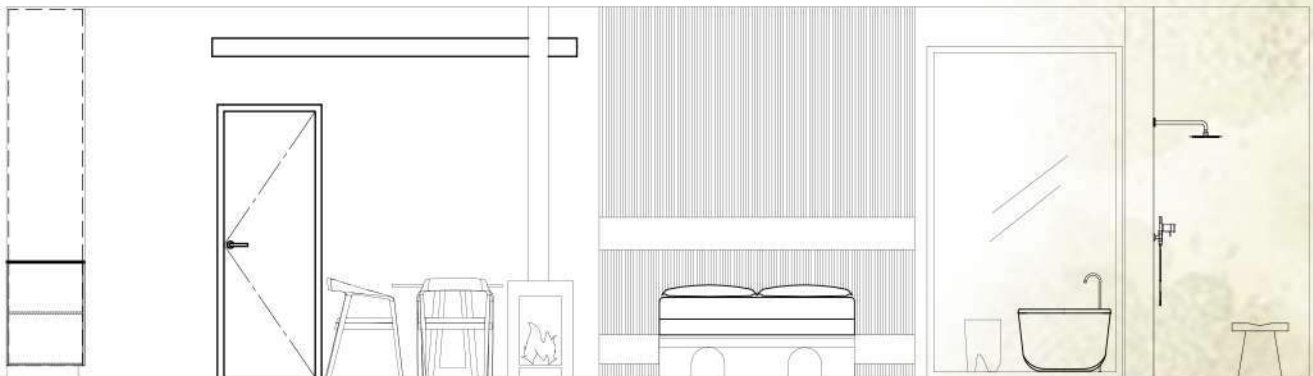


BED WITH ABOVE BED STORAGE



DOUBLE SHOWER WITH BEAUTIFUL VIEW



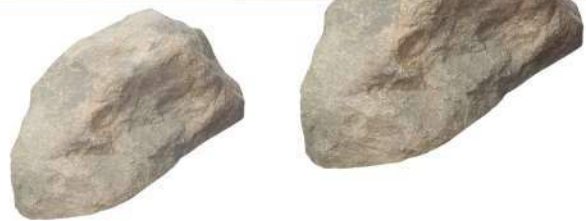




OUTSIDE SEATING AREA



FIREPIT SEATING AREA





06 BARBER SHOP | BARNET FAIR

ABOUT

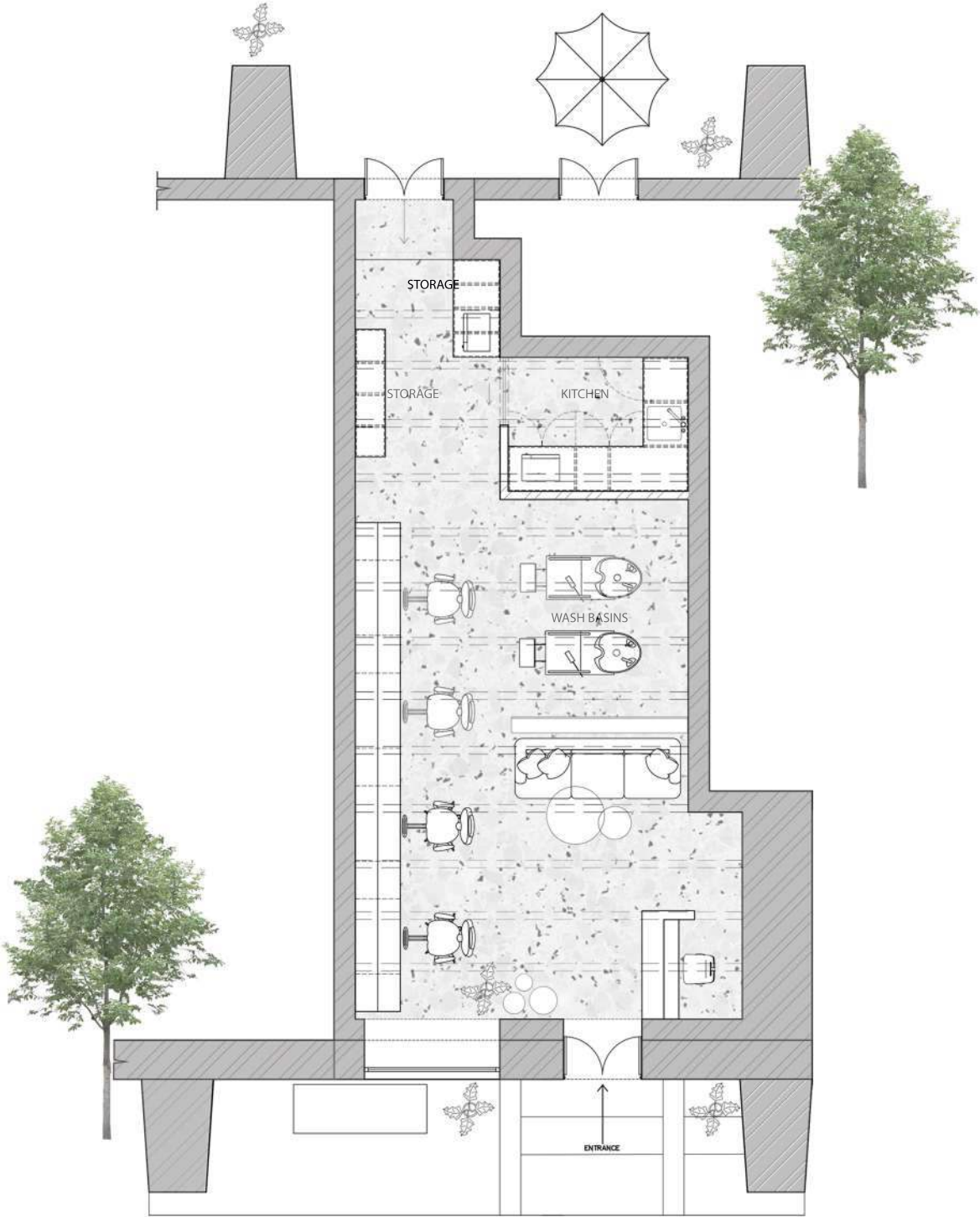
We were tasked to redesign and refresh the interior space of Barnet Fair Barber Shop located on bustling Bree Street in Cape Town city center. The design should be contemporary, edgy and clean whilst making use of natural materials (such as natural stone, etc.) and should evoke a feeling of freshness and be seen as a “hidden gem in the city center”

CONCEPT

Barnet Fair Barber Shop has been a traditional barber shop for over 12 years and will now be redesigned. I have created a design with a fairly clean look with some edgy and contemporary elements. Additionally, I have added some natural elements such as wood and plants to bring some life into the space. I have used colours such as brown and black to create a masculine feel. The shop has lots of space for storage and display options for products. The redesigned space will have a new and comfortable atmosphere for the customers.



ENTRANCE AND WAITING AREA





CUTTING STATIONS WITH SMART STORAGE



WAITING AREA WITH DISPLAY SHELF BEHIND



WASH STATIONS WITH SHELVING BEHIND IT



1. MANHATTAN FABRIC STOOL BROWN | LEROYMERLIN 2. CUSTOM MADE PENDANT LAMP | WIREWORLD 3. CUSTOM MADE POT 4. BOLETUS 4 WATT LED PORTABLE BLACK RECHARGEABLE TABLE LAMP | LIGHTING.CO.-ZA 5. JOHAN, 3-SEATER SOFA, MAYA CREAM | THE SOFACOMPANY 6. MALDIVES COFFEE TABLE IN PEARL 7. ZARRINA NESTED COFFEE TABLE SET | CIELO 8. POTTED STRELITZIA IN BLACK PLASTIC POT



1. ONA LIVING BRUSHED GREYMIST FROM OGGIE FLOORING USED ON RECEPTION DESK, COFFEE TABLE AND WOOD PANNELING
- 2.TERAZZO LG22HPSL FROM UNION TILE USED ON FLOOR
3. STARRY NIGHT ROCKFACE FROM WOMAG USED AS A STONE WALL
4. CUSTOM MADE WALLPAPER FROM ROBIN SPRONG
5. SKYLIGHT DARKNESS FROM DELUX USED ON WALLS
6. CONGO SUPERMATT MELAWOOD FROM PG BISON USED IN KITCHEN, WORKSTATIONS, CUBBOARDS
7. BLACK HANDLE FROM HANDLES INC
8. AR-BENTO DUKAT FROM MAX ON TOP USED FOR KICKPLATES
9. CALDERA MELAWOOD SUPERGLOSS FROM PG BISON USED ON RECEPTION DESK AND KITCHEN
10. LAZY WHISPER FROM HERTEX USED ON CUSHIONS
11. CHILLING NOUGAT FROM HETEX USED ON SOFA
12. CROCODILE CREEK MOCHA FROM HERTEX USED BARBER SHOP



08 KSA | KITCHEN DESIGN RESIDENTIAL DESIGN

Brief

Design

The brief was to design a high-end elegant kitchen space that, despite being small, will fulfill all their needs of accessible and efficient storage. Additionally the client wants a calm, natural aesthetic.

Concept

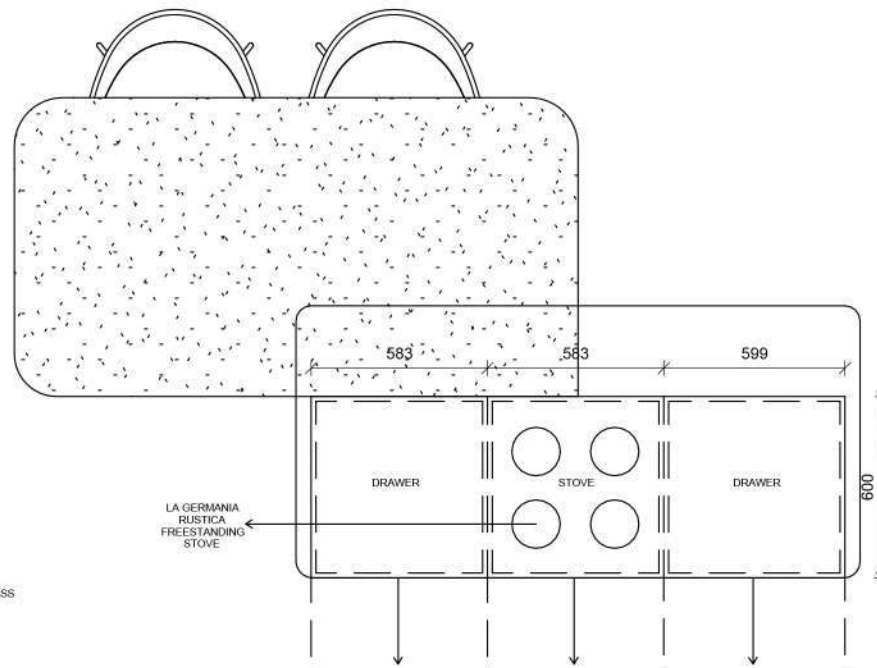
For this project the focus has been to create a calm and practical space for the client. Natural materials and earthy finishes have been used to maintain a sleek and concealed design, while also adding a few interesting elements. Abundant storage space has been allocated with concealing solutions to keep the slightly smaller kitchen tidy. A few practical elements were added such as a custom-made sink with a cutting board and bin has been integrated for convenience and time efficiency, storage behind the backsplash, top cupboards that move downwards so they don't have to reach far.



KITCHEN FRONT VIEW



Twist out cupboard drawers

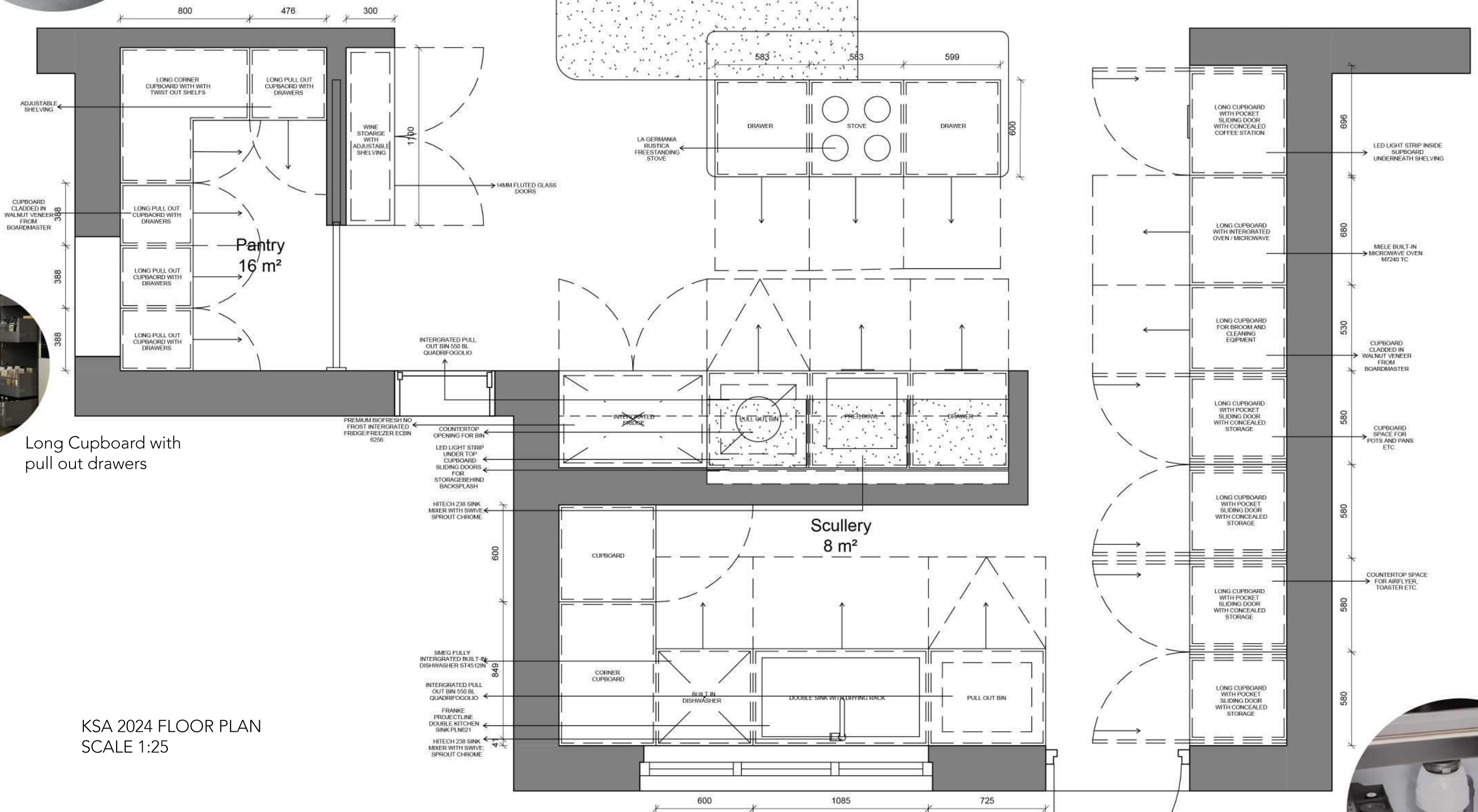


LA GERMANIA
RUSTICA
FREESTANDING
STOVE



Long Cupboard with
pull out drawers

KSA 2024 FLOOR PLAN
SCALE 1:25



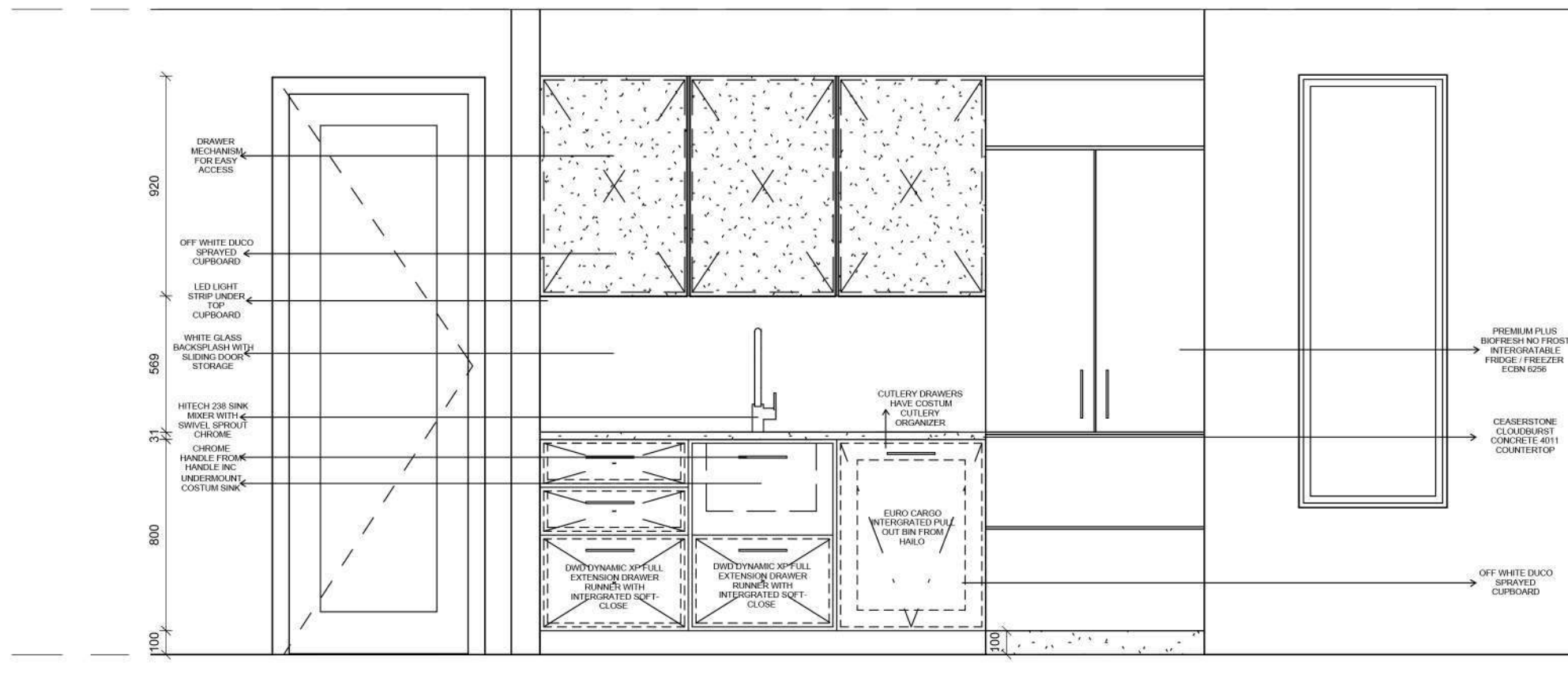
Bin with cleaning products
that pull outwards



Cupboard that open ups down-wards



Countertop bin for conviences and to make cooking easier



Backsplash with stoarge behind it

KSA 2024 ELEVATION
SCALE 1:25



Costum sink for practicallity



Pull out bin for comfort



KITCHEN RIGHT VIEW





KITCHEN LEFT VIEW





07 CHAIR DESIGN PRODUCT DESIGN

BRIEF

We were tasked to design a commercially viable chair and choosing a suitable target market.

CONCEPT

Dune is a luxurious occasional chair crafted with boucle fabric and solid bent timber frame aswell as a latex cushion sponge for ultimate comfort. The chair comes with an adjustable head piece mechansim for indiviual need. It draws inspiration from the desert landscape.

> SKILLED SET | FAMILY CREATED IN REVIT

DUNE.

STYLE MEETS FUNCTIONALITY



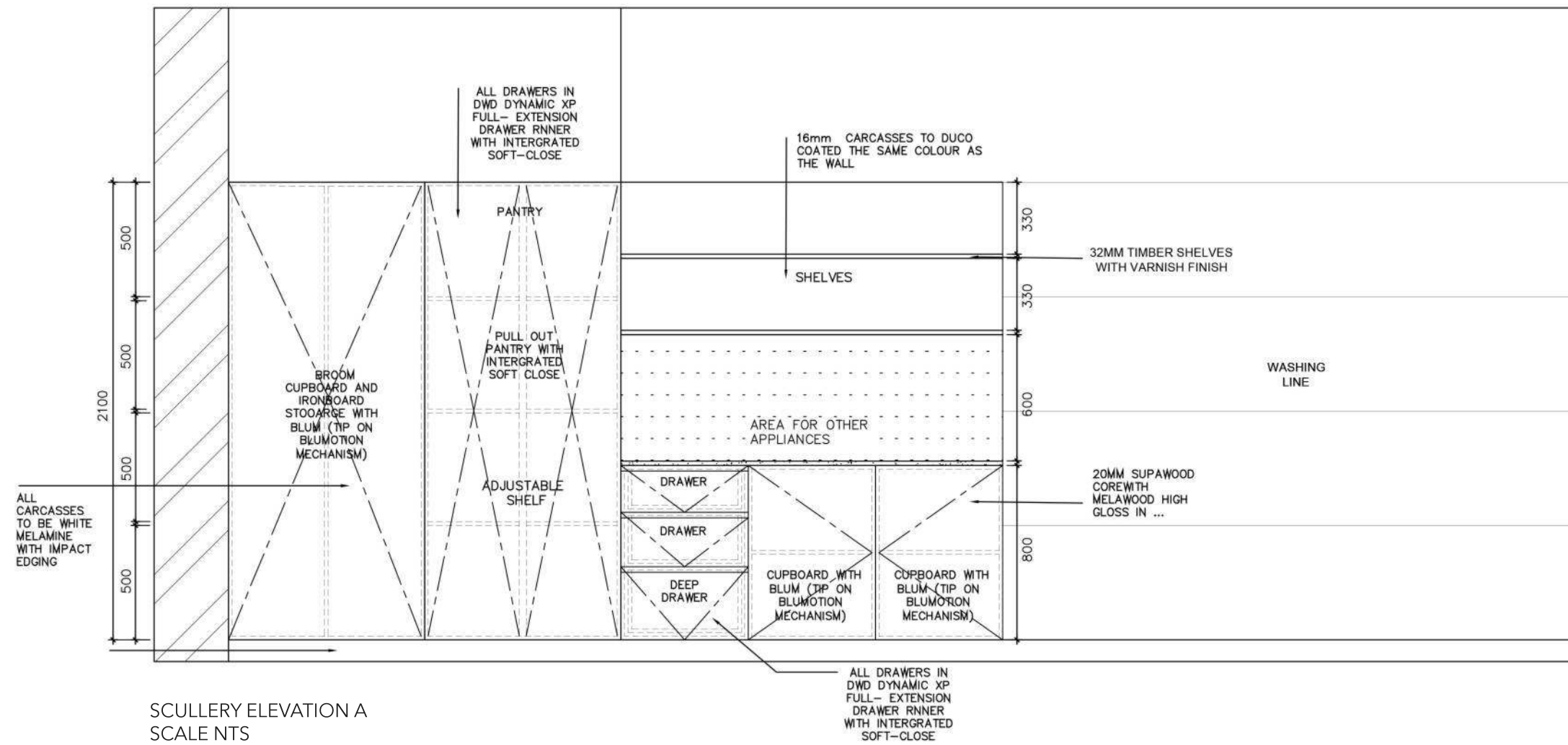


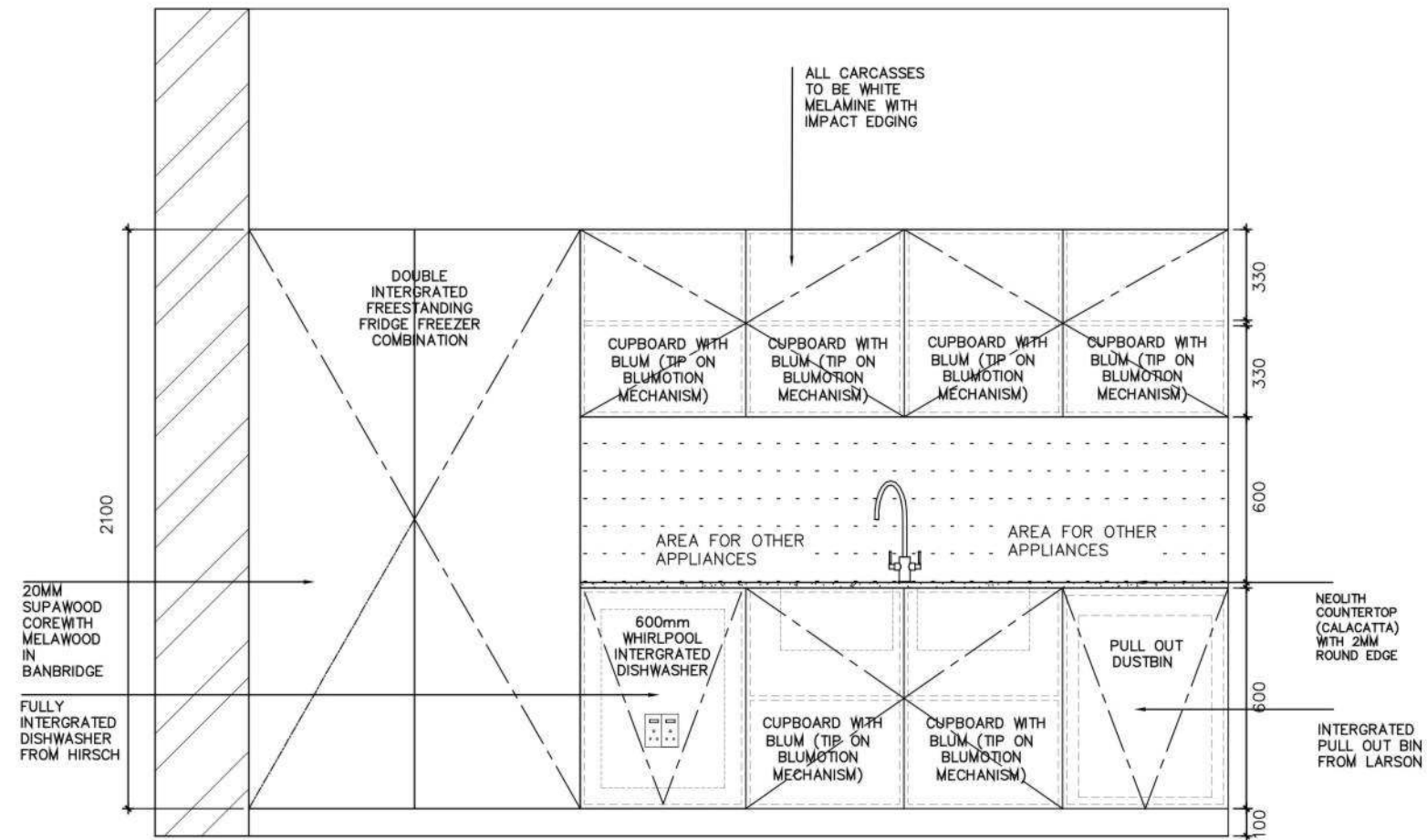


DUNE.

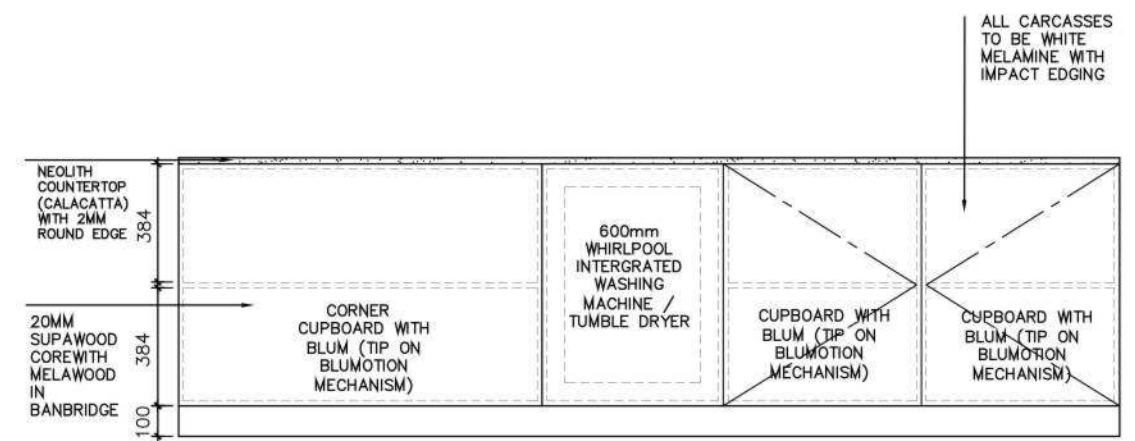
OCCASIONALCHAIR WITH NEW
HEAD PIECE MECHANISM



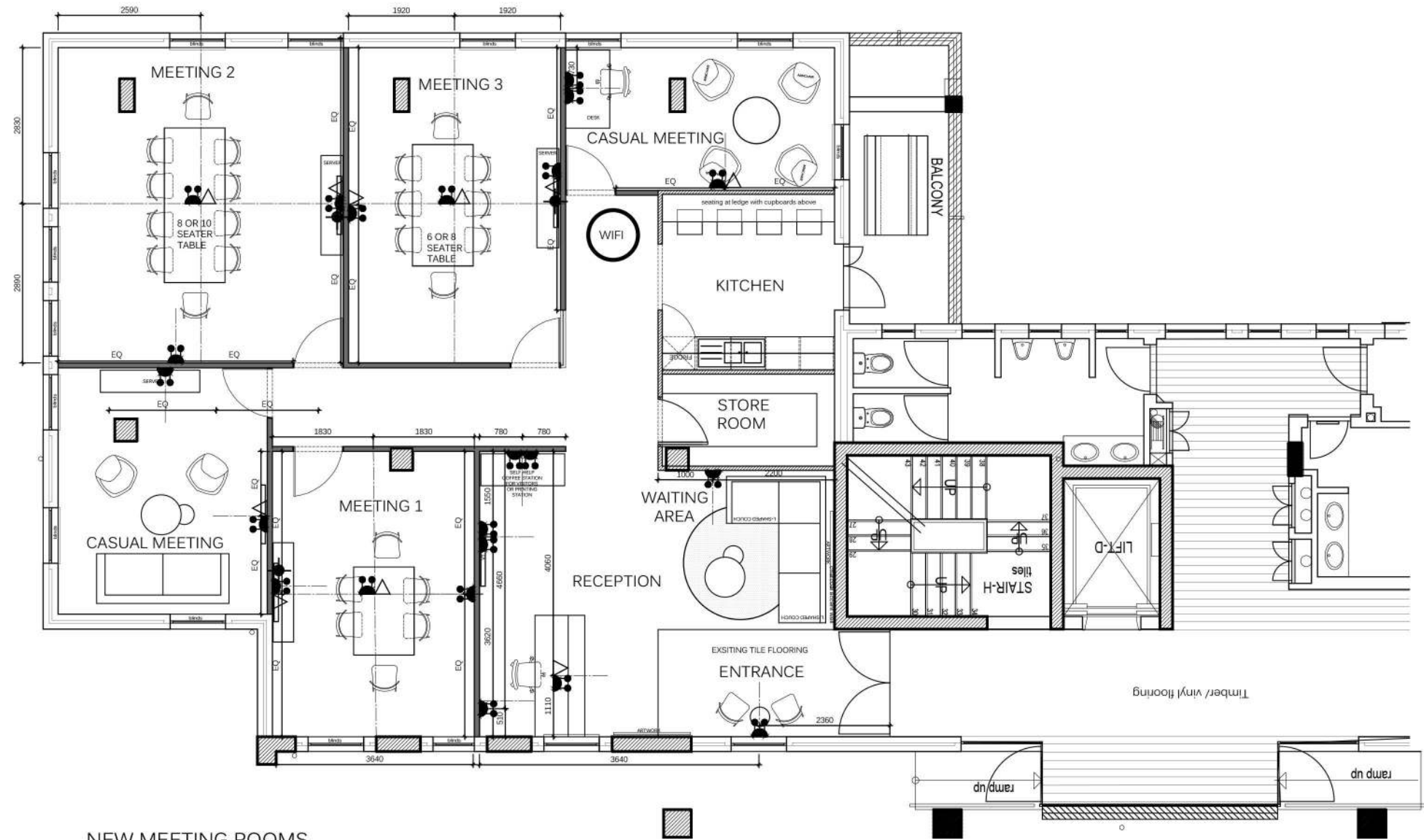




SCULLERY ELEVATION B
SCALE NTS



SCULLERY ELEVATION C
SCALE NTS



NEW MEETING ROOMS
DATA AND ELECTRICAL LAYOUT
SCALE 1:50

ELECTRICAL OUTLET LEGEND:

	16A Double Switched Socket
	16A Single Switched Socket
	Bell at front entrance with motion sensor
	100mm x 100mm Floor box as per spec

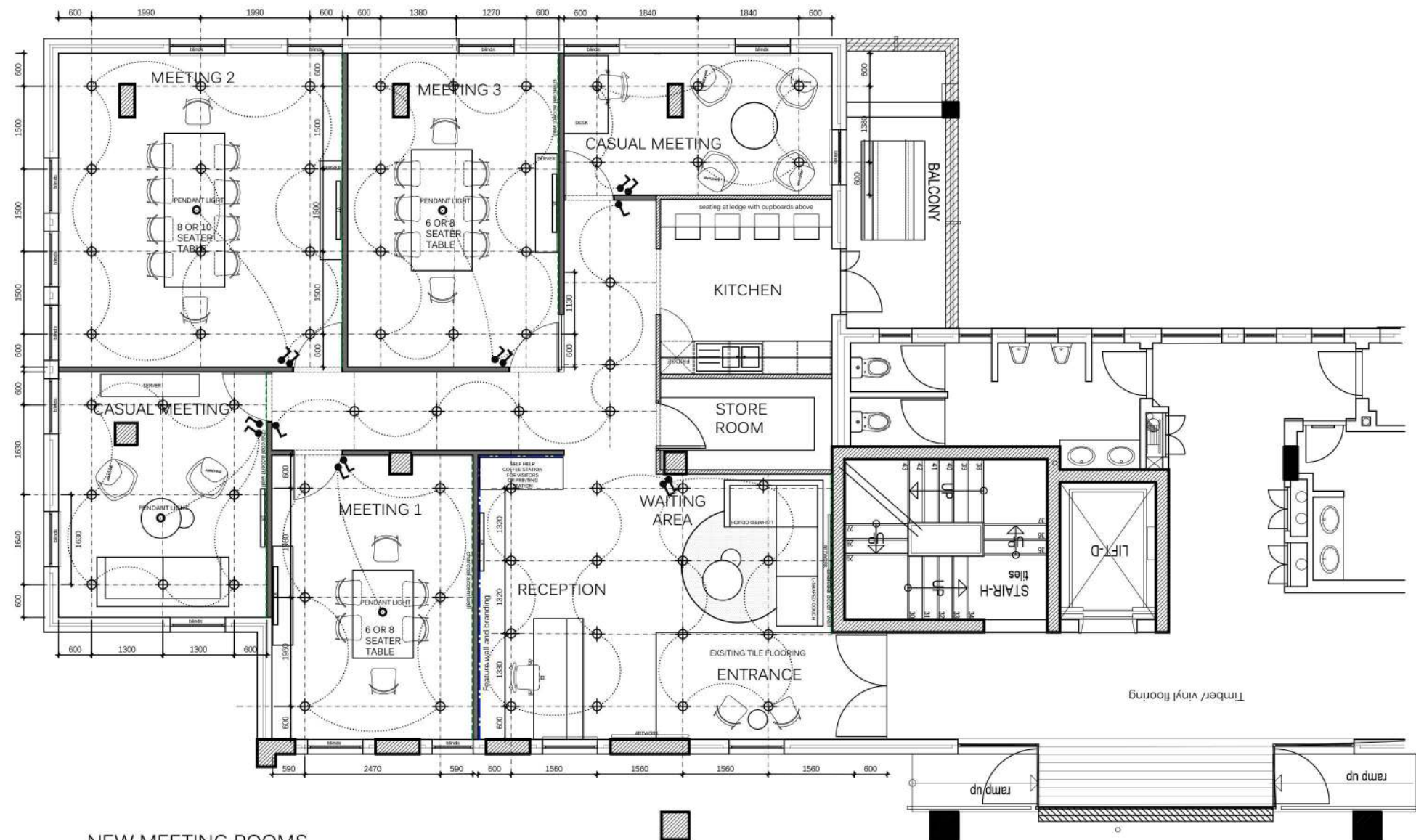
	Data Point
	Telephone Point
	power skirting
	TV antenna point
	Data analog phone points for meeting room 1,3,4

NOTES : PLUGS IN ALL PODS TO HAVE THE FOLLOWING:
- USB
- 2POINT
- 3POINT

ALL PLUGS TO BE AT 300mm AFFL UNLESS OTHERWISE SPECIFIED.

NOTE: ALL PLUGS TO BE 300mm UNLESS OTHERWISE SPECIFIED.

WIFI INTERNET SYSTEM TBC CLIENT



NEW MEETING ROOMS
OPTION 2
SCALE 1:50

LIGHTING LEGEND:

	PANTO 2210 ROUND GU10 78MM DOWNLIGHT
	LE GRAND YSALIS CHAMPAGNE LEVER WALL DIM PRESS FROM THE LIGHTING WAREHOUSE
	MERCURY OPAL ROUND GLASS PENDANT LIGHT FROM LIGHTING.CO.ZA



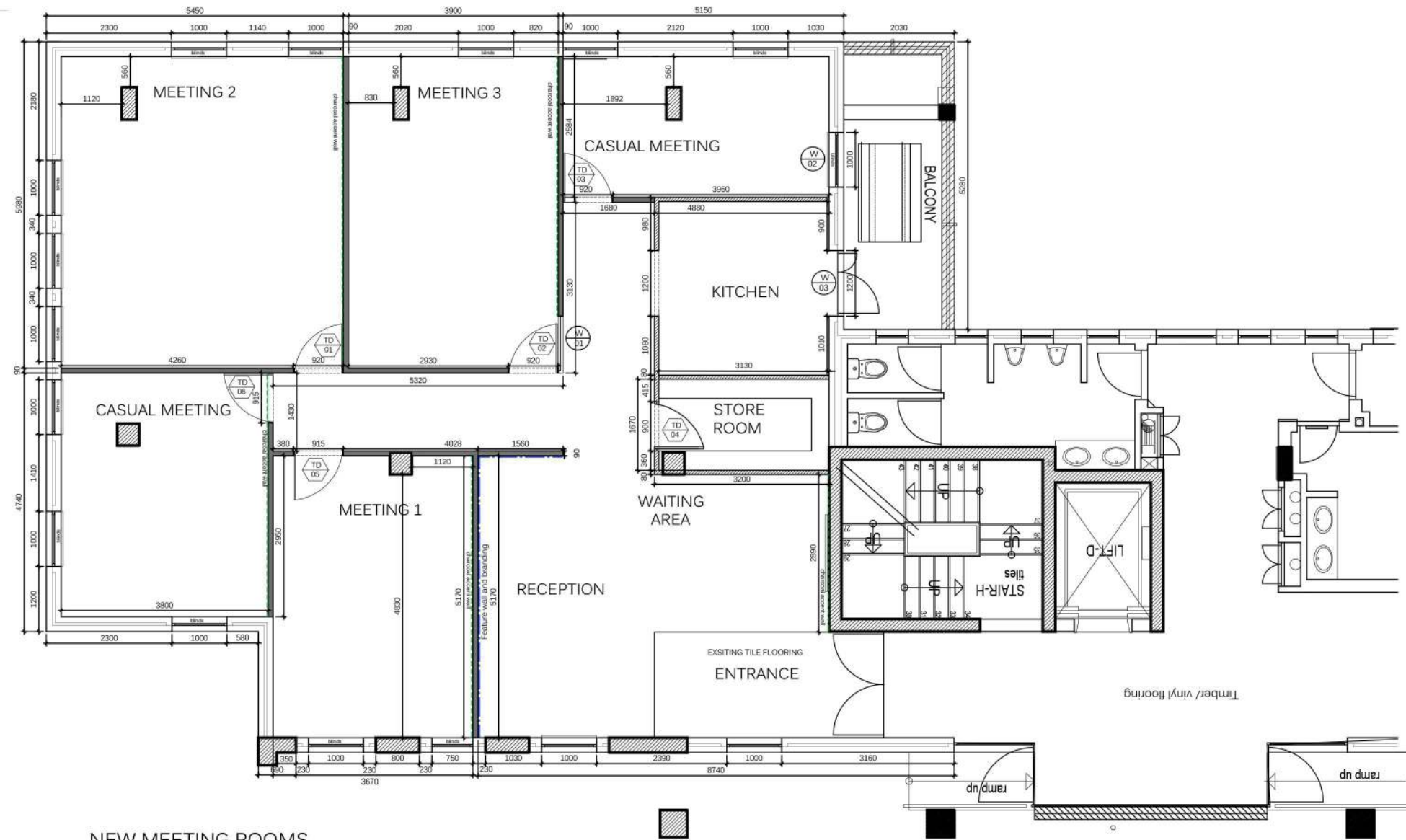
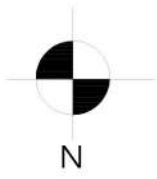
NEW MEETING ROOMS OPTION 2

SCALE 1:50

STAINLESS STEEL EDGE TRIMS BETWEEN FLOOR FINISHES WHERE REQUIRED .

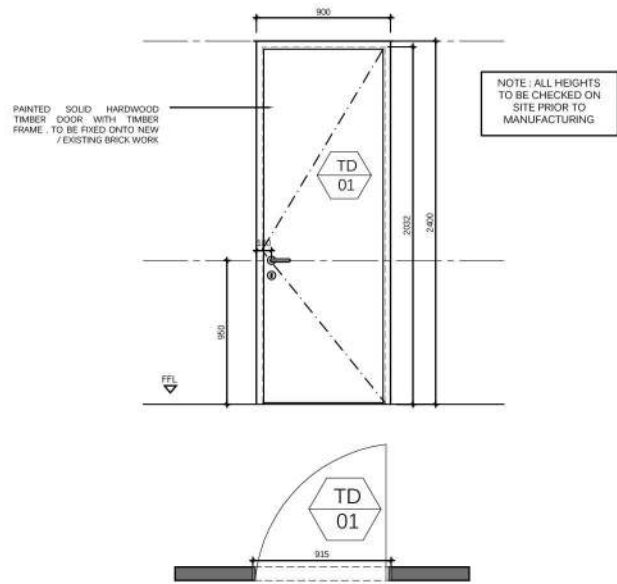
150mm x 16mm painted hardwood skirting with 5mm x 5mm cutout 50mm from the top

	BELGOTEX CAST EXPOSED COLOUR BEIGE TOTAL M2:63m6
	BELGOTEX MOD DESIGN ENTERPRISE CARPET TILE IN COLOUR RED. TOTAL M2:16m9
	VINYL FLOORING, BELGOTEX DAVENPORT, COLOUR ASH BROWN TOTAL M2:60,3
	10MM STAINLESS EDGE TRIM FROM MTRM
	GLAZED PORCELAIN TILE FROM UNION TILES . CODE :6S24MAT



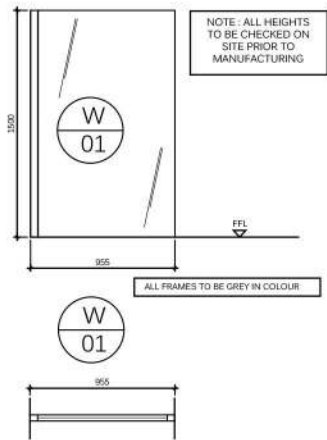
NEW MEETING ROOMS
NEW BUILD WORK PLAN
SCALE 1:50

OFFICE PROJECT | TIMBER DOOR SCHEDULE

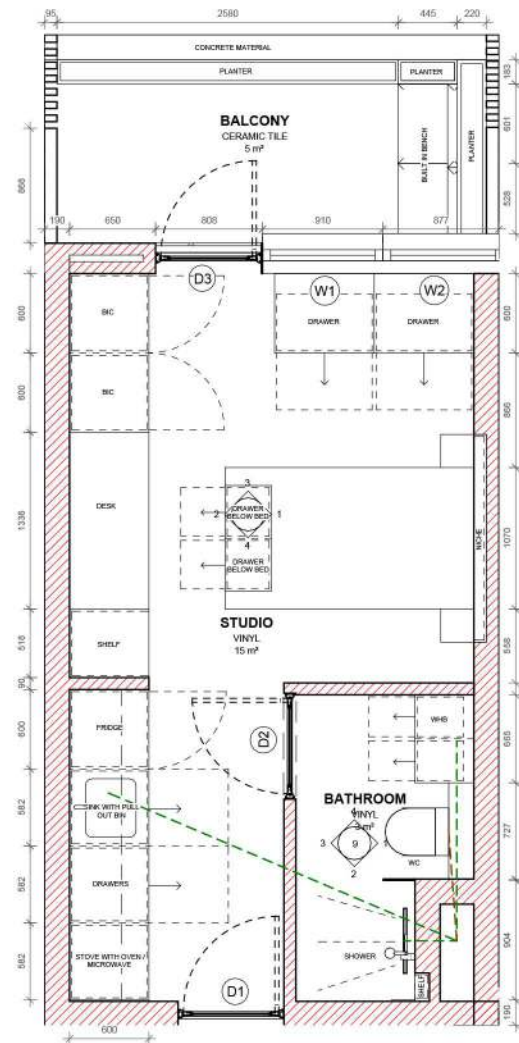


DOOR TYPE	DOOR NUMBERS	TOTAL
A	GROUND FLOOR	
	TD01, TD02, TD03, TD04, TD05, TD06	6
	FIRST FLOOR	
	SECOND FLOOR	
Description	PAINTED SOLID METAL/ALUMINUM FRAME PAINTED SOLID TIMBER DOOR(WHITE) COLOUR FROM PLASCO IN PARAMOUNT GLOSS ENAMEL FOR DOOR SWING REFER TO LAYOUT DRAWINGS.	
Size	AS DIMENSIONED - CHECK ON SITE DOORS TO BE FIXED ONTO BRICK WALLS	
Glazing	N/A	
Ironmongery	BUILDER TO ALLOW PC OF 15000 FOR DOUBLE SIDED HANDLE SET AND KEY HOLE COMBINATION. HINGES AS PER BUILDER SPEC.	
Notes and special conditions	HANDLES MOUNTED AS PER MANUFACTURER. HANDLES FROM HANDLES INC IN HIGGINS LINES ON ROUND ROSE IN COLOUR STAINLESS STEEL BRUSHED. ORIGINAL SIZE TO BE CHECKED ON SITE BEFORE INSTALLATION	

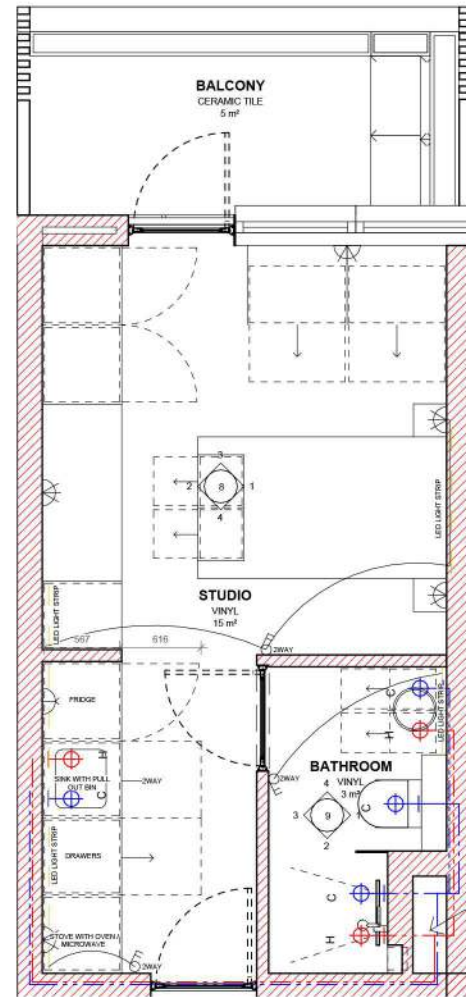
OFFICE PROJECT | WINDOW SCHEDULE



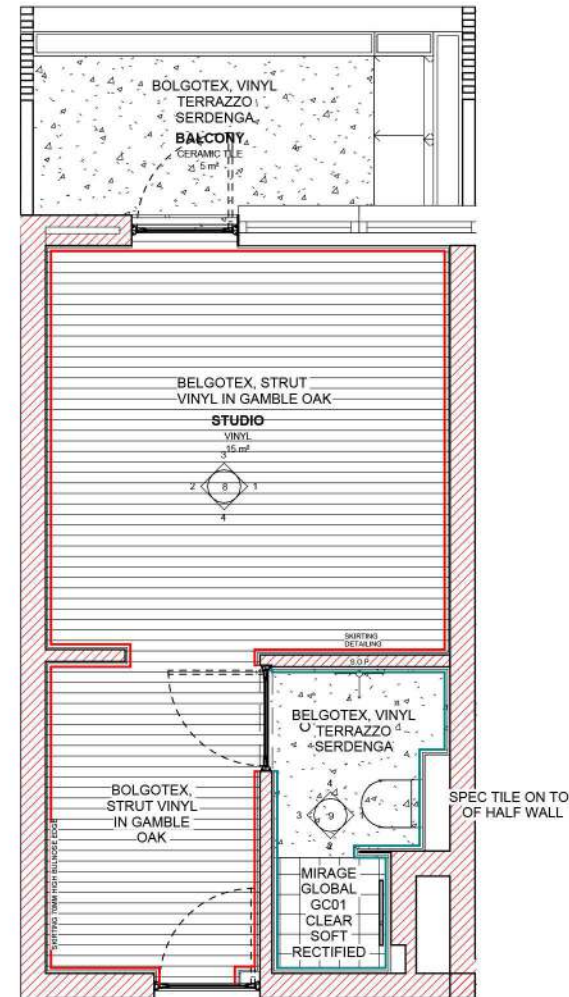
WINDOW TYPE	WINDOW NUMBERS	TOTAL
B	SECOND FLOOR	
	WD01, WD02, WD03	3
	FIRST FLOOR	0
	SECOND FLOOR	0
Description	FRAMELESS 10MM SOUND PROOF TOUGHENED SAFETY GLASS PANELS WITH WHITE FRAME	
Size	AS DIMENSIONED - CHECK ON SITE	
Glazing	10 mm SOUNDPROOF CLEAR FLOAT GLASS AS PER NBR.	
Ironmongery		
Notes and special conditions	ALL FRAMES TO BE POWDER COATED IN WHITE	



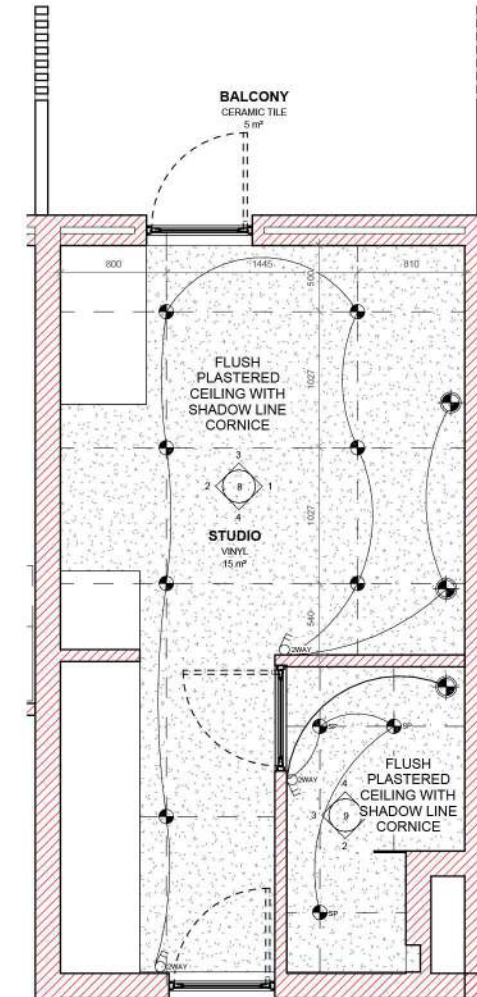
1 5. TYPICAL STUDIO (CONSTRUCTION LAYOUT PLAN)
1:50



2 5. TYPICAL STUDIO (WATER RETICULATION & ELECTRICAL PLAN)
1:50



3 5. TYPICAL STUDIO (FINISHES PLAN)
1:50



4 TYPICAL STUDIO (REFLECTED CEILING PLAN)
1:50

LEGEND

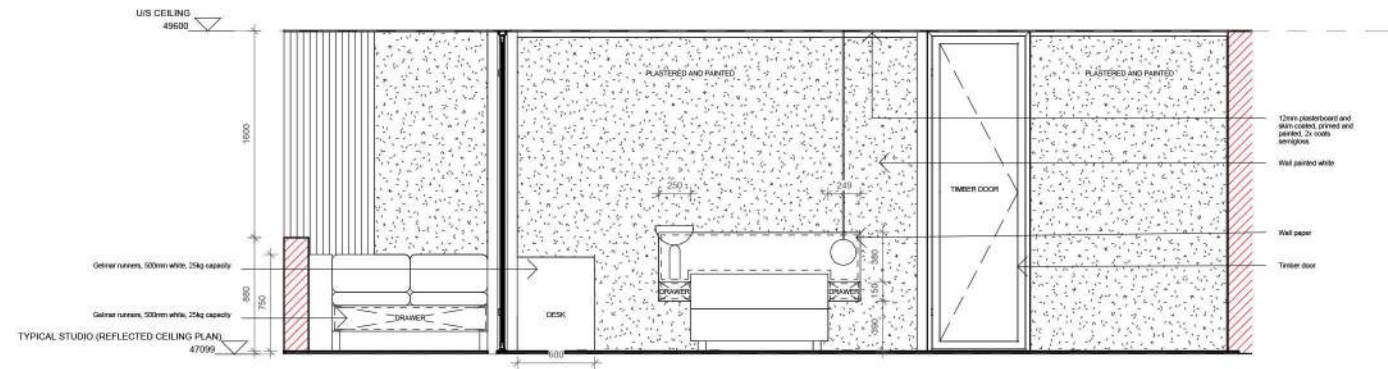
—	PLASTERED WALL WITH PRIMER, 2x COATS PLASTER, 1x COAT OF PUTTY, 1x COAT OF PAINT (OR SIMILAR) COLOUR WHITE
—	12V KAT TIE FROM STUDIOS WITH 2MM BEIGE GROUT COLOUR

	LED pendant light Underneath of fitting to be 2200mm APTL unless otherwise specified
	Steam proof LED recessed downlighter
	Double lower switch 1000mm APTL unless otherwise specified
	Double socket power outlet 1000mm APTL unless otherwise specified
	Double socket power outlet APT unless otherwise specified

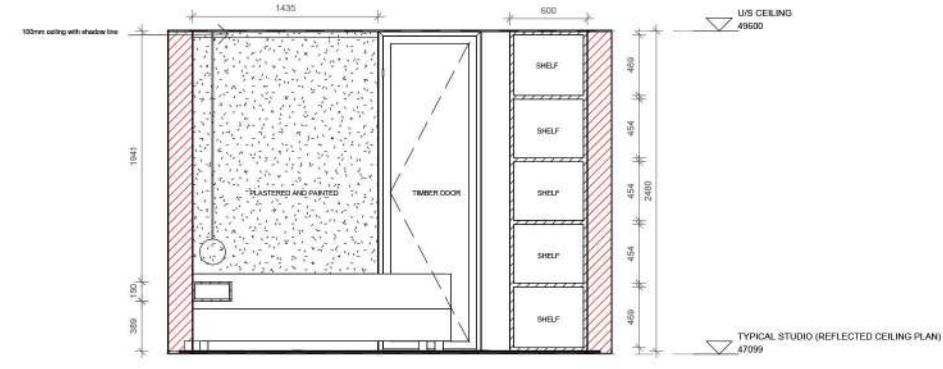
No.	Description	Date

CODE	STATUS	SUITABILITY DESCRIPTION	PURPOSE OF ISSUE

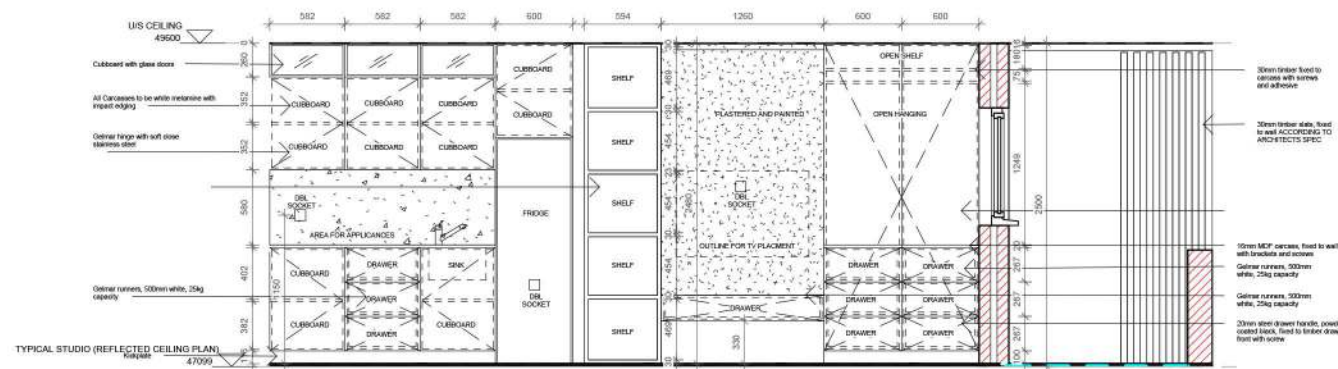
PROJECT	Fibonacci	CLIENT			FIBONACCI CONSTRUCTION DRAWINGS		
SHEET		STUDIO APARTMENT PLANS	Date	Project number	Scale (@ A3)		
			2024/11/15	2024_P9	1 : 50		
			Drawn by	Drawing Number		REV	
	SF	ID - 105					
		Checked by					
		EM					



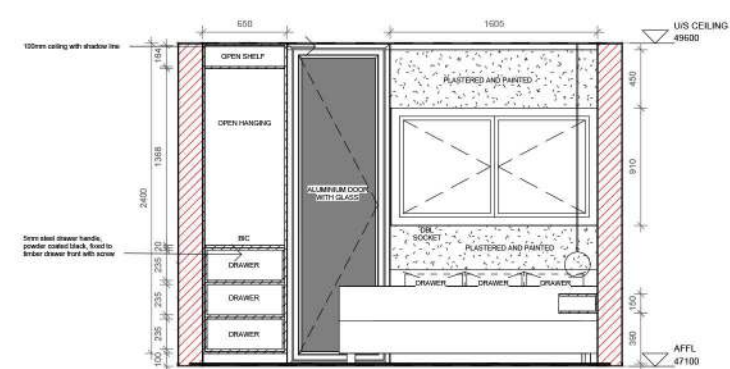
1 STUDIO APARTMENT ELEVATION 1
1 : 50



4 STUDIO APARTMENT ELEVATION 2
1 : 50



2 STUDIO APARTMENT ELEVATION 3
1 : 50



3 STUDIO APARTMENT ELEVATION 4
1 : 50

	No.	Description	Date

				PROJECT	Fibonacci			CLIENT			FIBONACCI CONSTRUCTION DRAWINGS		
				Date				Project number	Scale (@ A3)				
				2024/11/15	2024_P9	1 : 50							
				SHEET	STUDIO APARTMENT ELEVATION			Drawn by	Drawing Number		REV		
								SF					
								Checked by					
								EM	8				

SEE YOU SOON!