

KAY-LEE SMITH
INTERIOR DESIGN PORTFOLIO



KAY-LEE SMITH

INTERIOR DESIGN PORTFOLIO 2021-2022



01 LUXURY HOTEL & PODS GAO B ESCAPE

Pg 01 - 12

A luxury hotel based in an existing building in Woodstock, accompanied by luxury holiday pods based in Hawequwa.

02 PG BISON COMPETITION 2022 EKHAYA

Pg 13 - 21

A design for a low income mixed-use residential and retail space

03 CAESARSTONE COMPETITION 2022 RISE OF THE ASHES

Pg 22 - 28

South Africa's National Assembly re-imagined to celebrate the new South Africa

04 TREE HOUSE HAVEN ESCAPE

Pg 29 - 33

A futuristic tree house design with a creative and sustainable edge whilst adhering to biophilic design principals.

05 FILM STUDIO ATLANTIC STUDIOS

Pg 34 - 38

A renovated studio in Montague Gardens Cape Town

06 RESIDENTIAL DESIGN TRILL ROAD 63-65

Pg 39 - 44

A redesign of the Victorian dwelling, situated in the heart of Observatory, Cape Town at 63-65 Trill Road

07 KITCHEN DESIGN KSA COMPETITION

Pg 45 - 51

A freestanding Victorian dwelling, situated in heart of Observatory, Cape Town, for the client that is a financial business executive (aged 32-45)

08 RETAIL OXYGEN

Pg 52 - 55

A retail shop within the confines of a shipping container

09 RESTAURANT PESCE AZZURRO

Pg 56 - 58

A contemporary Italian seafood restaurant located in Bree Street Cape Town

10 DRAWING ROOM HARTLEY HOUSE

Pg 59

a drawn, inked and rendered 3D axonometric projection

11 PRODUCT DESIGN LIGHT -THE NAUTICAL EYE

Pg 60 - 61

A nautical inspired pendant light

-PINK BOKKIE

An upcycled wooden stool

Pg 62 - 63

12 SURFACE DESIGN TEXTILES

Pg 64 - 65

a range of my top pattern designs

13 MURAL KUUMBA

Pg 66 - 67

A mural design for interior designer Justin Van Breda at Cape Looms

14 PHOTOGRAPHY ELLERMAN HOUSE

Pg 68

Photography course submission

01 GAO B ESCAPE

HOSPITALITY DESIGN

BRIEF

YOU HAVE BEEN APPOINTED AS THE INTERIOR DESIGNER FOR A NEW AND EXCITING URBAN EXPERIENCE IN THE HEART OF WOODSTOCK IN THE FORM OF A LUXURY HOLDING HOTEL PAIRED WITH FOUR EXPERIENTIAL LUXURY ECO PODS WHOSE LOCATION IS WITHIN A 4 HOUR DRIVE FROM WOODSTOCK. YOU HAVE BEEN THE GIFTED THE LUXURY OF A CARTE BLANCHE DESIGN AESTHETIC. YOU HAVE BEEN GIVEN AN EXISTING PLAN OF THE 2ND FLOOR OF NO 10 SEARLE STREET WOODSTOCK, THE STRUCTURE OF WHICH CANNOT BE ALTERED AT ALL.

CONCEPT

THE CORNERSTONE OF GAO B DESIGN IS ROCK AND STONE, ONE OF NATURE'S STRONGEST AND MOST STABLE RESOURCES. THE WESTERN CAPE REGION IS WORLD RENOWNED FOR ITS MOUNTAIN RANGES AND ROCK FORMATIONS, BOASTING THE POPULAR FAMOUS TABLE MOUNTAIN AND THE BEAUTIFUL MOUNTAIN RANGES IN HAWQUA NATURE RESERVE. WITHIN THE DESIGN, I UTILIZE THE CULTURAL AND NATURAL HERITAGE OF THESE REGIONS TO GIVE GUESTS THE MOST AUTHENTIC OF EXPERIENCES. ROCKS AND STONE FROM THE WESTERN CAPE'S MOST FAMOUS ROCK FORMATIONS ARE INCORPORATED THROUGHOUT THE DESIGN TO BRING THE FEELING OF RAW NATURAL BEAUTY INTO THE LUXURIOUSLY DESIGNED HOTEL. GORGEOUS SANDSTONE FROM TABLE MOUNTAIN FEATURES THROUGHOUT THE DESIGN, WITH THE COLOURS AND TEXTURES OF THE MOUNTAIN ACCENTING THE SPACE. GRANITE FROM THE REGION FEATURES PROMINENTLY TOO, WHILE THE REGIONS NATURAL COLOURS ARE INCORPORATED THROUGHOUT THE SPACE. TO ENCAPSULATE THE FULL EXPERIENCE, THE RICH AND DIVERSE CULINARY SCENE OF THE WESTERN CAPE IS ALSO CELEBRATED WITHIN THE HOTEL, WITH A LOCALLY INSPIRED TAPAS RESTAURANT CELEBRATING THE REGION'S LOCAL FLAVOUR AND PRODUCE. WINES FROM SOUTH AFRICA'S FAMOUS WINELANDS REGION ARE FEATURED TO PAIR WITH THE DELICIOUS MENU OPTIONS. AFTER YOUR HOTEL STAY YOU ARE TRANSFERRED TO THE A BEAUTIFUL EXPERIENCE IN THE HAWQUA NATURE RESERVE.



FAMILY POD EXTERIOR PERSPECTIVE



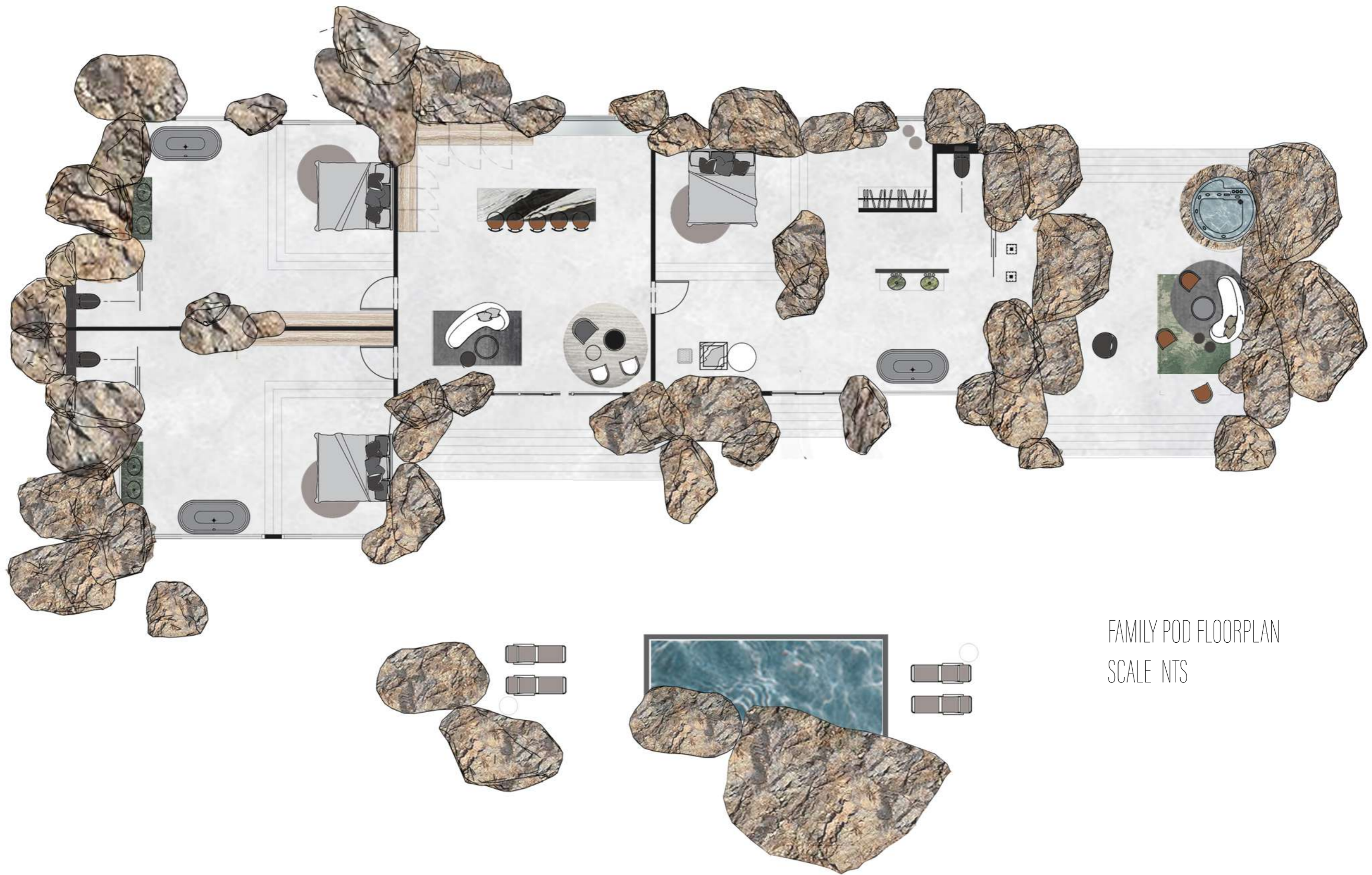
INTERIOR PERSPECTIVE



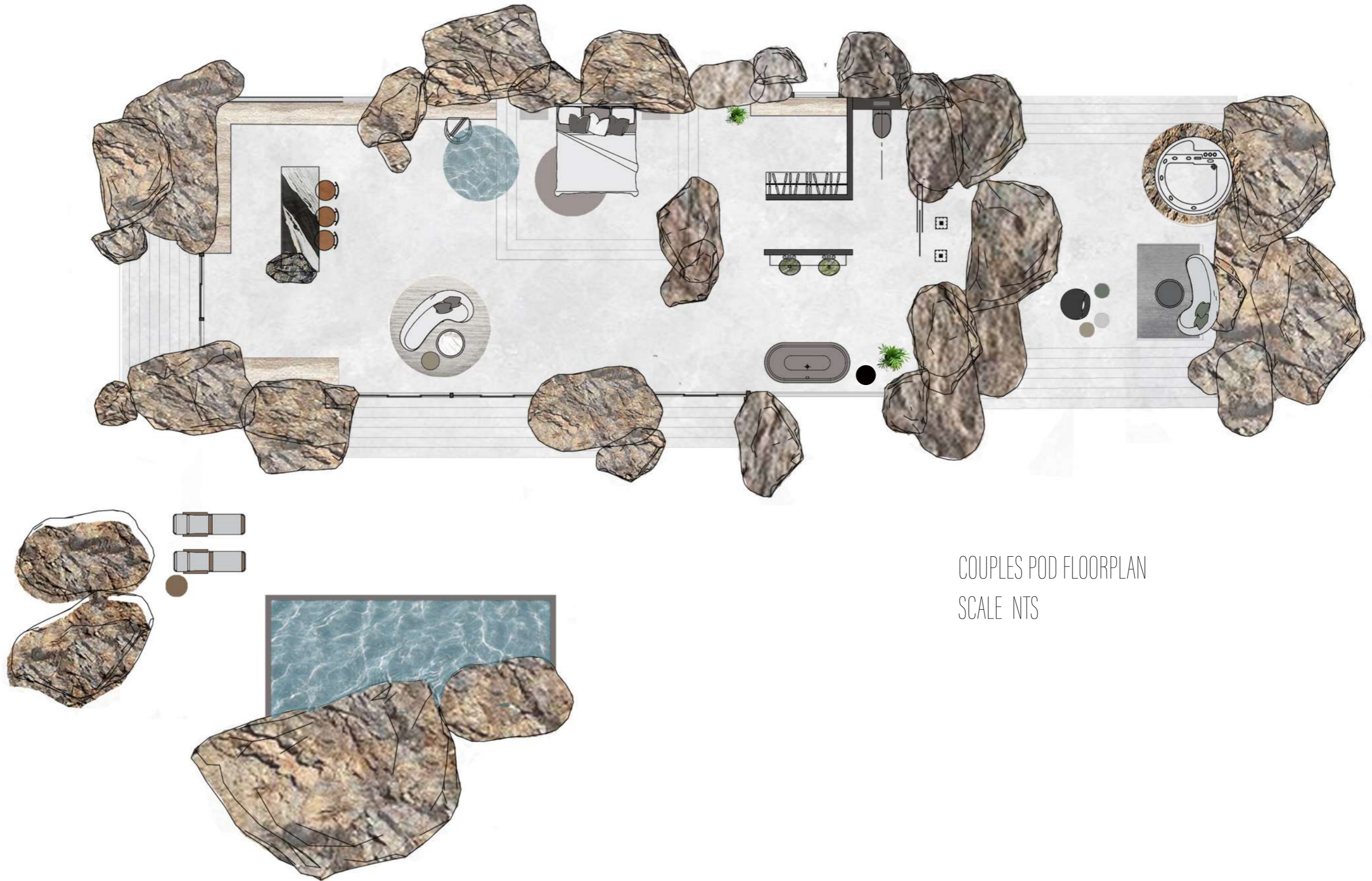
FAMILY BEDROOM PERSPECTIVE



COUPLES POD EXTERIOR PERSPECTIVE



FAMILY POD FLOORPLAN
SCALE NTS



COUPLES POD FLOORPLAN
SCALE NTS



RESTAURANT PERSPECTIVE



HOTEL BATHROOM PERSPECTIVE



HOTEL BED PERSPECTIVE



BATHROOM VANITY PERSPECTIVE



HOTEL ROOM PERSPECTIVE



HOTEL BED PERSPECTIVE



BATHROOM VANITY PERSPECTIVE



GAO B ESCAPE HOTEL FLOORPLAN
SCALE 1:100

02

eKHAYA

RISE FROM THE ASHES, NEW NATIONAL ASSEMBLY

BRIEF

THE BRIEF FROM THE COEGA DEVELOPMENT CORPORATION HAS ISSUED A REQUEST FOR PROPOSAL (RFP) TO ASSIST IN PROVIDING A DESIGN FOR A MIXED-USE RESIDENTIAL AND RETAIL SPACE. THE RESIDENTIAL UNITS OF VARIOUS SIZES ARE TO ACCOMMODATE THE NEED FOR HOUSING LOCATED WITHIN CLOSE PROXIMITY TO THE VARIOUS AREAS WHERE WORKERS ARE EMPLOYED, INCURRING MINIMAL UNNECESSARY COSTS FOR TRAVEL. YOUR DESIGN PROPOSAL MUST REDEFINE THE MARKET'S PERCEPTIONS AND EXPECTATIONS OF HOUSING IN THIS CATEGORY, PROVIDING A "REAL-WORLD SOLUTION TO A REAL-WORLD PROBLEM." YOUR SOLUTION MUST BE REGARDED AS THE NEW INNOVATIVE FOOTPRINT FOR FUTURE DEVELOPMENTS OF SIMILAR NATURE, THE NEXT EVOLUTIONARY STEP IN HOUSING THE MASSES. THE PROPOSED SITE AND STRUCTURES LOCATED ON IT HAS NO HERITAGE IMPACT AND WILL ALLOW FOR MORE FLEXIBILITY WITHIN YOUR DESIGN PROPOSAL. EXISTING STRUCTURES ON THE PROPERTY ARE TO BE RETAINED AND THE DESIGN PROPOSAL SHOWING INTEGRATION OF THESE MODULAR UNITS AND ON THEIR OWN, ARE REQUIRED. THIS AFFORDABLE HOUSING MUST BE LOCATED IN DERILECT NURSERY SCHOOL MM MAKU AND TYNIRA STREET MOTHERWELL GQEBERHA (PORT ELIZABETH).

CONCEPT

EKHAYA MAKES A HOUSE A HOME. AS THE STRUCTURE SUSTAINS DAY-TO-DAY LIVING, IT FOSTERS A CULTURE OF COMMUNITY FROM WITHIN. THE MIXED-USE BUILDING PROVIDES SUSTAINABLE LIVING THAT IS COHESIVE WITH ITS ENVIRONMENT AND THE COMMUNITY. MODULAR RESIDENTIAL UNITS SECURE SPACES FOR FAMILIES TO GROW AND SHARE IN THEIR EXPERIENCES. LOCAL AND COMMUNITY-DRIVEN BUSINESS NURTURES THE FOUNDATIONS OF THE DEVELOPMENT.

Top 10 finalist in South Africa





Module 1
Sleeps up to 3 people

Module 2
Sleeps up to 5 people











COURTYARD | KHULA & YITYA
KHULA (Retail Store selling locally crafted clay pots)



COURTYARD
YITYA (Eatery) and YENDAWO (Grocery Store)



YENDAWO
Grocery Store selling locally grown fresh produce, and meat from local butchers



YITYA
Eatery selling local traditional meals



PUBLIC ENTRANCE TO SHOPS



KHULA
Retail Store that sells locally made clothing,



BEDROOM MODULES



Module 1&2 Main Bedroom
Sleeps up to 3 people



Module 2 Kids Bedroom
Sleeps up to 2 people

BATHROOM MODULES



Type 1 Bathroom Module
With bath



Type 2 Bathroom Module
With shower

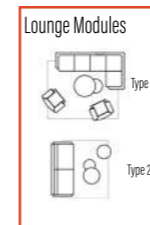
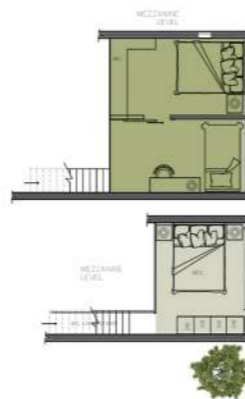
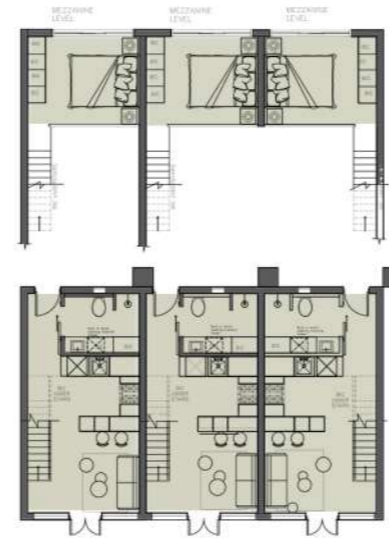
KITCHEN MODULES



Type 1 Kitchen Module
With CARAZ cupboards (customizable)

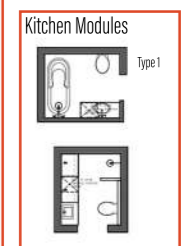
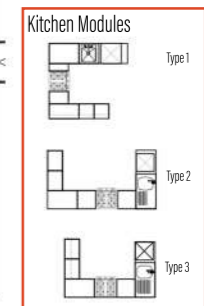


Type 2 Kitchen Module
With FOLKGREY cupboards (customizable)



Module 1
Sleeps up to 3 people

Module 2
Sleeps up to 5 people



Site Plan
Scale NTS



03

CAESARSTONE

RISE FROM THE ASHES, NEW NATIONAL ASSEMBLY

BRIEF

THE BRIEF IS TO REDESIGN THE FREESTANDING VICTORIAN DWELLING, SITUATED IN HEART OF OBSERVATORY, CAPE TOWN, AT # 63 - 65 TRILL ROAD.

YOUR CLIENT IS A FINANCIAL BUSINESS EXECUTIVE (AGED 32-45). HE WILL BE SHARING THE SPACE WITH HIS WIFE, SHE IS A WELL PUBLISHED WRITER. THEY HAVE PURCHASED THIS PROPERTY AS A LONG TERM RESIDENCE. THIS CLIENT IS LOOKING FOR A COMBINATION OF MODERN AND CLASSICAL ELEMENTS, STILL IN KEEPING WITH THE CURRENT TRENDS, BUT FUSED WITH A SOFTER, MORE SOPHISTICATED FEEL. THEY ARE VERY SPECIFIC ABOUT NOT WANTING SOMETHING THAT WILL DATE QUICKLY, AND ALTHOUGH ON FIRST IMPRESSION THEY SEEM QUITE ORDINARY, WHEN IT COMES TO GOOD TASTE AND STYLE, THEY KNOW WHAT THEY'RE TALKING ABOUT. THE BUILDING IS A HERITAGE BUILDING, AND THEREFORE THE FACADE MAY NOT BE ALTERED. OPENINGS MUST REMAIN INTACT, AND AS IS. SOME REQUIREMENTS INCLUDE TO SHOWCASE THE EN-SUITE BATHROOM AND KITCHEN DETAIL AND TO USE A CHOSEN DESIGNER TO INSPIRE YOUR SPACE

CONCEPT

FOR FYNBOS, FIRE IS FOLLOWED BY REBIRTH AND NEW GROWTH. MY DESIGN HAS THEREFORE BEEN INSPIRED BY SOUTH AFRICA'S MAGICAL FYNBOS. LIKE THE MYTHICAL PHOENIX, FIRE IS ESSENTIAL FOR THE FYNBOS LIFECYCLE AS IT IS REQUIRED FOR REPRODUCTION. THE FIRE AT SOUTH AFRICA'S NATIONAL ASSEMBLY THUS PROVIDES AN OPPORTUNITY FOR A NEW ERA OF GROWTH AND RECONCILIATION IN OUR COUNTRY. I HAVE CHOSEN TO USE THE PROTEA TO INSPIRE MY SPACE AND THEME. THE PROTEA IS SOUTH AFRICA'S NATIONAL FLOWER, AND THE MOST WELL-KNOWN SPECIES OF FYNBOS, WHICH MAKES IT THE PERFECT SYMBOL FOR THE REBIRTH OF THE NATIONAL ASSEMBLY BUILDING. THE PROTEA ALSO SYMBOLIZES KEY CHARACTERISTICS OF SOUTH AFRICA SUCH AS DIVERSITY, COURAGE, AND TRANSFORMATION. BRIGHT AND BOLD COLOURS OF PROTEAS WHICH EVOKE POSITIVITY AND DETERMINATION FEATURE ACROSS MY DESIGN. TO MIMIC THE PROGRESSIVE NATURE OF OUR NATIONAL ASSEMBLY, POPS OF AFROFUTURISM DESIGN ARE INCORPORATED INTO THE DESIGN. THE NEW SPACE WILL REFLECT THE BEAUTY, GROWTH, AND UNITY OF SOUTH AFRICA.

Nominated top 3 at Design Time to enter Caesarstone Competition



CAESARSTONE
EXTERIOR



Protea leaf shape



Movement of leaf



Spikes to emphasize importance



BRICKS
Red brick and glass brick
to represent futurism



CAESARSTONE
406 Clearskies outdoor used
to mould roof shape



CAESARSTONE MIX
Laser cut Caesarstone 405 Middy
outdoor & 5100 Vanilla Noir



BRASS
Matte brass spikes

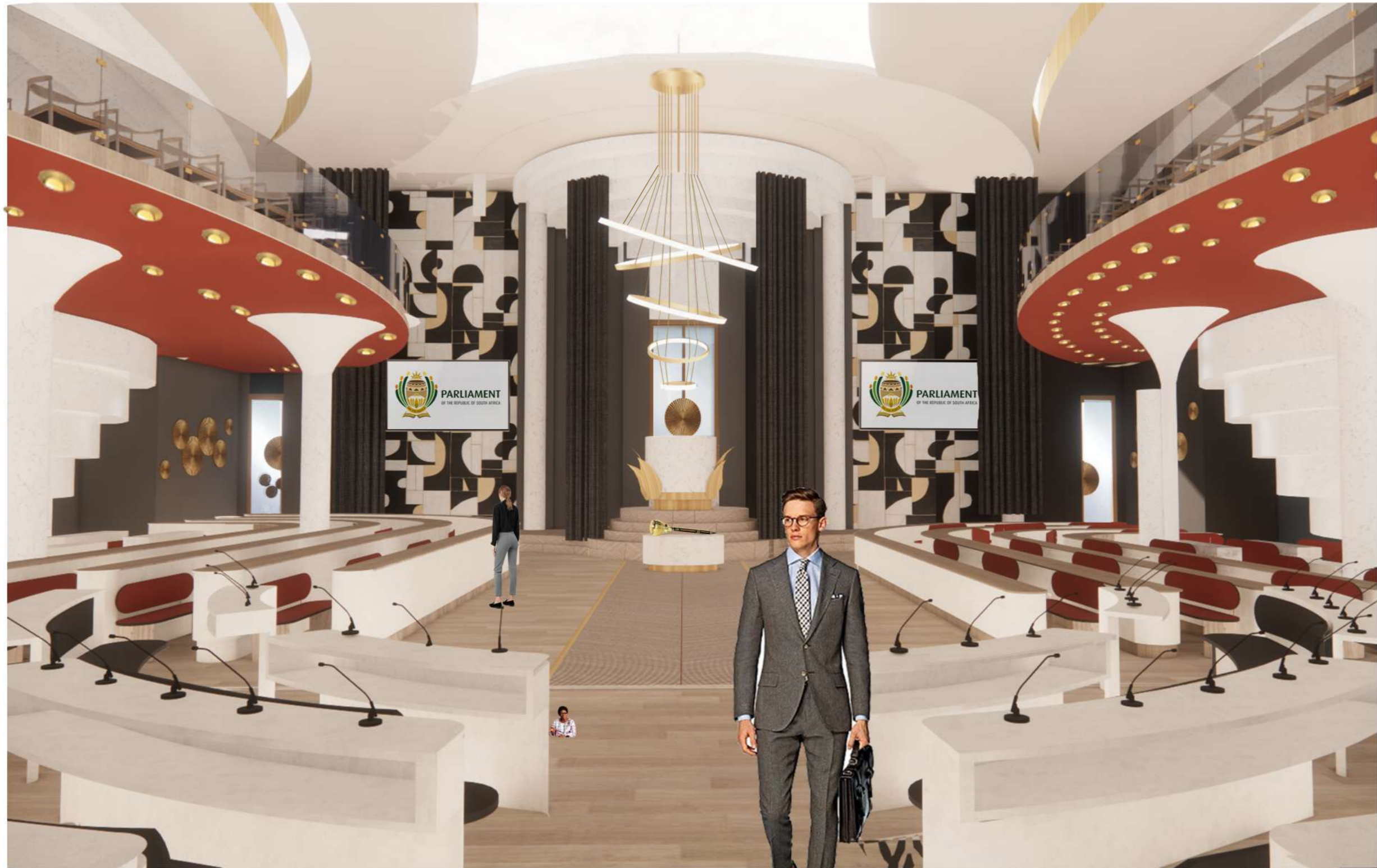


ASSEMBLY PERSPECTIVE



PODIUM PERSPECTIVE

CAESARSTONE
INTERIOR



FIRST IMPRESSION PERSPECTIVE



CAESARSTONE
Cut 5100 Vanilla Noir &
5151 Empire White



PAINT
Charcoal paint



PAINT
Burnt Orange



BRASS



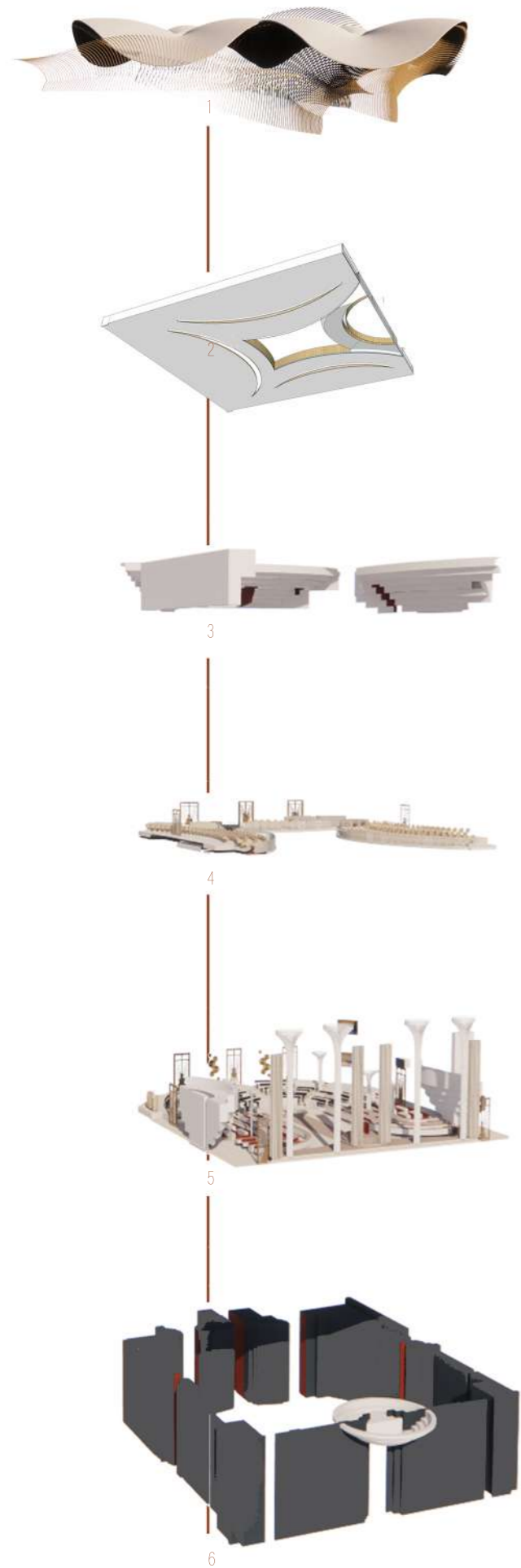
CAESARSTONE
5151 Empire White



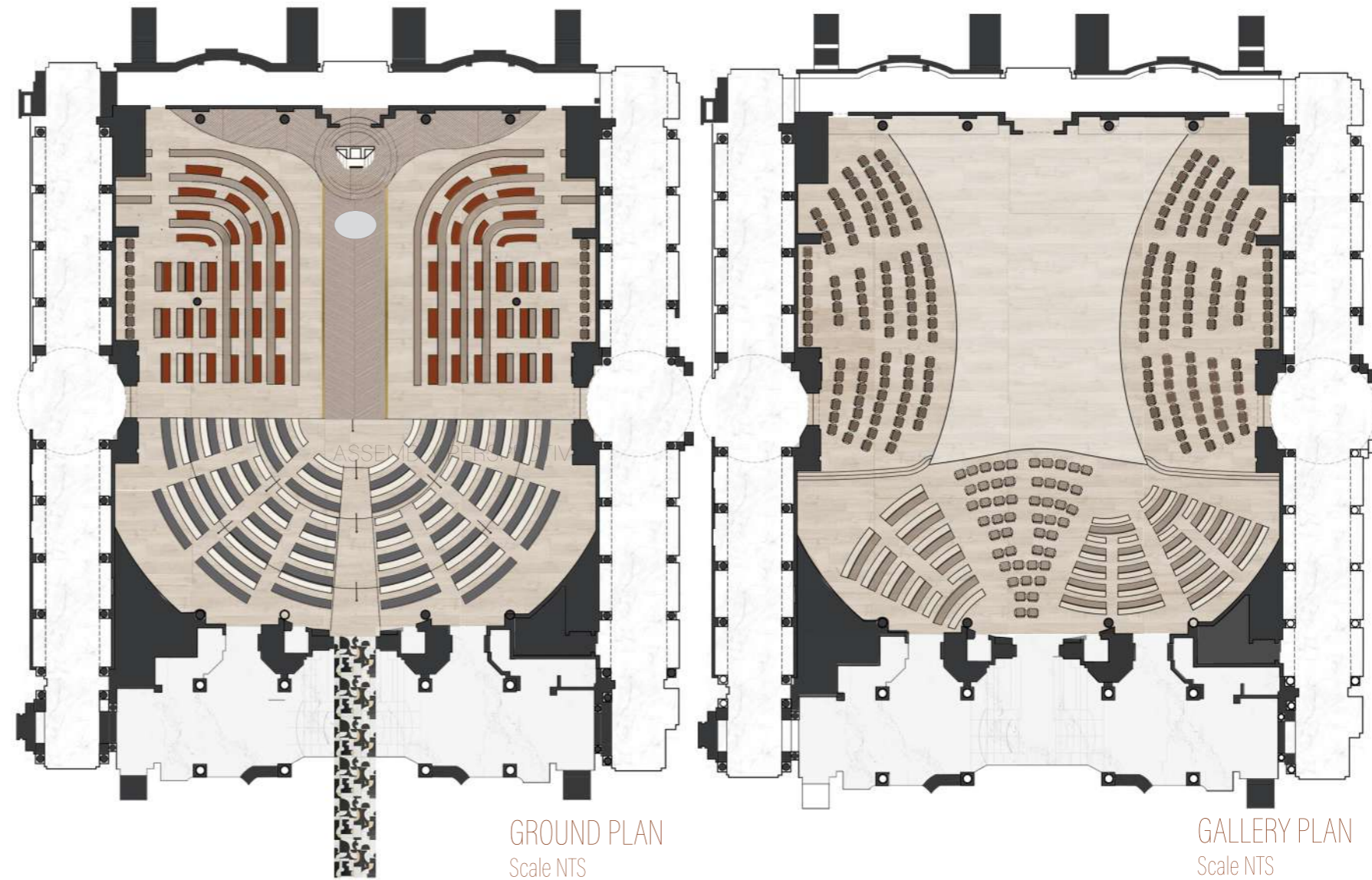
GALLERY PERSPECTIVE



GALLERY PERSPECTIVE



AXO OF NATIONAL ASSEMBLY



- 1. **ROOF**- Sculptured roof made out of outdoor caesarstone that was inspired by the protea leaf concept
- 2. **CEILING**- Skylight mimicking the organic shape below to let light shine into the National Assembly, this is used to represent hope and clarity for our SA nation
- 3. **WALL FEATURE**- Sculptured caesarstone clad steps, this representing our country's growth that is reaching new heights.
- 4. **GALLERY**- Organic shaped gallery to mimic shape of the protea.
- 5. **GROUND FLOOR**- Floor with columns, that represent the stems of proteas, which is holding up the national assembly.
- 6. **WALLS**- Existing shell of the National Assembly

04

HAVEN ESCAPE

BOKEO NATURE RESERVE, LAOS



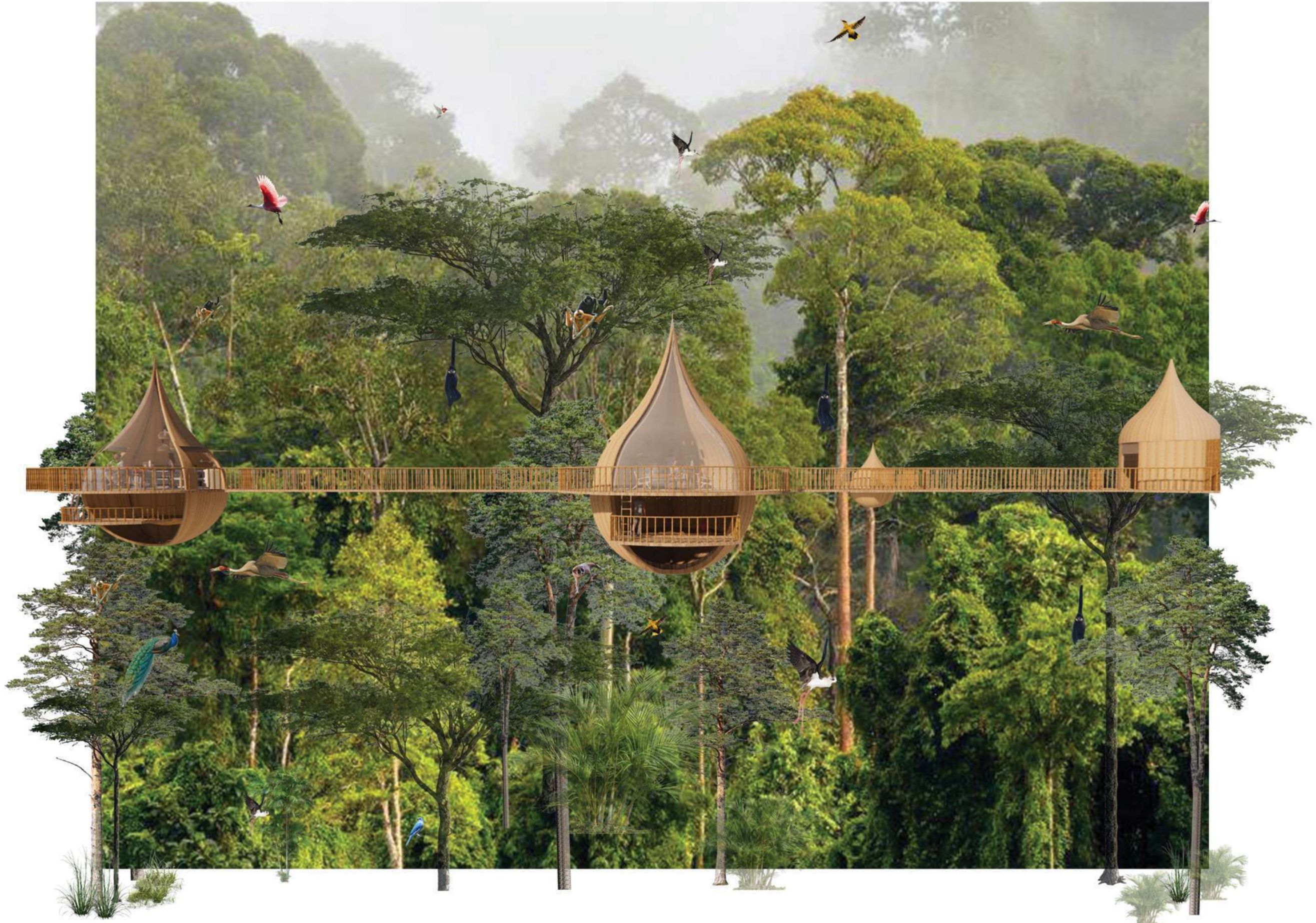
BRIEF

THE BRIEF WAS TO DESIGN A TREE HOUSE SUSPENDED IN A MAGNIFICENT FOREST. IN NATURE, ANYWHERE IN THE WORLD. THE DESIGN OF THE TREE HOUSE MUST BE INNOVATIVE, CREATIVE WITH A SUSTAINABLE EDGE WHILST ADHERING TO BIOPHILIC DESIGN PRINCIPALS. THE RELATIONS BETWEEN THE EXTERIOR SURROUNDINGS AND THE INTERIOR SPACE HAD TO BE TAKEN INTO CONSIDERATION. THE PROPOSED DESIGN SHOULD BE WELL-CONCEPTUALIZED AND CONSIDERED. THE TREE HOUSE HAD TO BE A SPACE DESIGNED FOR 2 PEOPLE AND THE AREA COULD NOT EXCEED 50 SQM'S INTERNALLY.

CONCEPT

THE HAVEN ESCAPE, A SANCTUARY FOR COUPLES TO LEAVE THEIR WORRIES AND TROUBLES BEHIND. A SUSTAINABLE STRUCTURE, BASED ON BIOMIMICRY TO ALLOW THE FOREST AND SURROUNDING TO LIVE AND BREATHE ALONE AS IT HANGS AMONGST THE TREES LIKE A COCOON. HERE AT THE HAVEN ESCAPE WE AIM FOR YOU TO FEEL APART OF THE BOKEO NATURE RESERVE BY HAVING A 360 DEGREE LOOKOUT VIEW AND ELEMENTS SUCH AS AN OPEN SHOWER, BALCONIES, SEATING AND WINDOWS TO MAKE IT FEEL LIKE YOU ARE ONE WITH NATURE.

OUR WORLD IS MOVING AT SUCH A FAST PACE THAT PEOPLE FORGET TO 'STOP AND SMELL THE ROSES', SO HERE AMONGST THE FOREST IT IS YOUR TURN TO REACH FOR THE FUTURE WHERE PEOPLE REALISE WHAT IS REALLY IMPORTANT, WHICH IS SPENDING QUALITY TIME WITH ONE ANOTHER AND THE PLANET.





KITCHEN

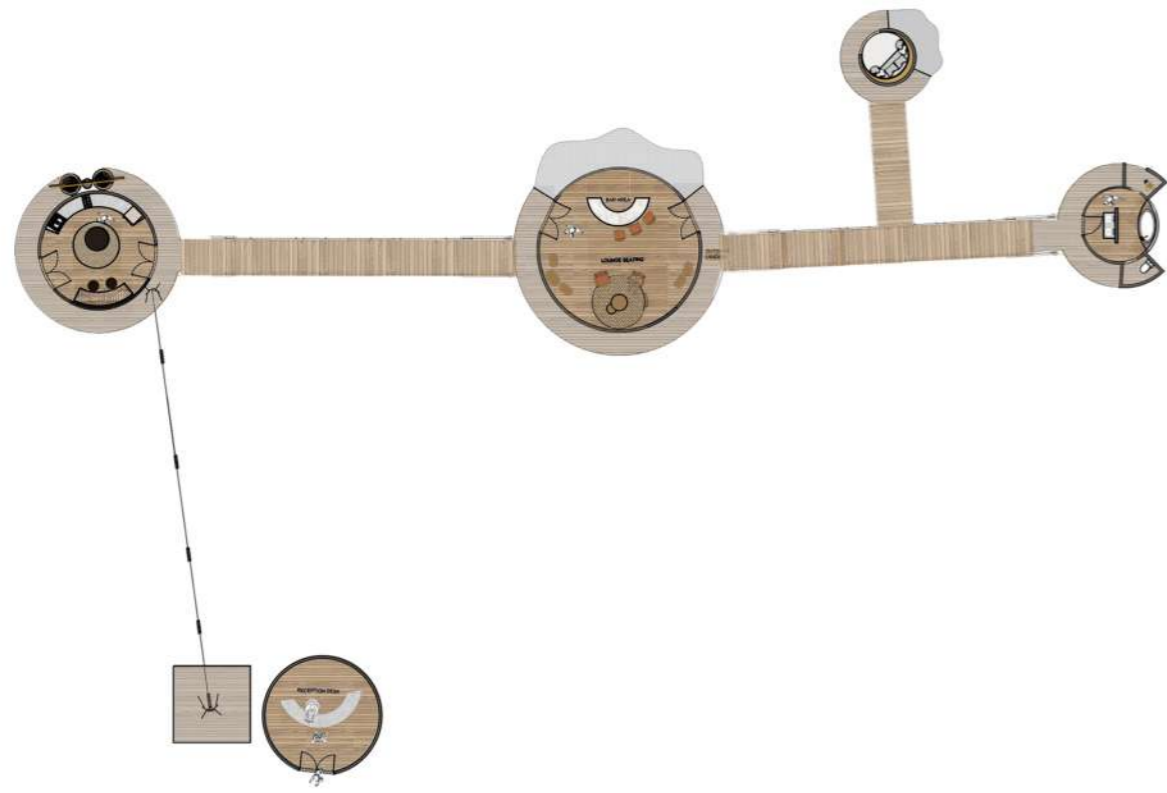


BAR LOUNGE





BEDROOM & BATHROOM SUITE



ZIP LINE PLATFORMS



SITE PLAN

05 ATLANTIC STUDIOS

MONTAGUE GARDENS , Cape Town

BRIEF

THE ATLANTIC STUDIOS MANAGEMENT TEAM ASKED US TO REDESIGN THEIR SPACES. ATLANTIC STUDIOS IS KNOWN AS A CUTTING-EDGE FILM AND TELEVISION STUDIO FACILITY IN THE INDUSTRY. ATLANTIC STUDIOS APPROACHED US TO RE-DESIGN THEIR CURRENT CANTEEN TOGETHER WITH THEIR CREW AND CAST LOUNGE IN ORDER TO BREATHE NEW LIFE INTO THESE NEGLECTED SPACES. THE UPGRADE OF THESE AREAS TOGETHER WITH AN UPGRADE OF THE EXISTING COFFEE SHOP ON THE GROUND FLOOR WILL ENSURE THAT THEIR CUTTING-EDGE STATUS REMAINS INTACT FOR YEARS TO COME.

CONCEPT

I WANTED TO RECREATE THE SPACE TO BECOME A BEAUTIFUL, SOPHISTICATED, AND COOL AREA WITH WARM ELEMENTS AND AND AIRY FEEL. I WOULD LIKE TO USE A NEUTRAL COLOUR PALETTE, WITH TONES OF RUST AND POPS OF BLUE AND GREEN TO SYMBOLIZE TRANQUILITY, COMFORT AND POSITIVITY. NATURAL WOODEN SLATS AND FURNITURE WILL BE USED TO KEEP THE SPACE ORGANIC, LIGHT, AND SIMPLISTIC. THE SPACE WILL BE FINISHED WITH ACCENTS OF BRASS TO SHOW SOPHISTICATION AND MIMIC THE GOLDEN 'OSCAR'.

My design won 1st place for this real life project



FILM STUDIO
CANTEEN PERSPECTIVES



COFFEE STATION



CUSTOM MADE SERVER



CUSTOM MADE BOOTH SEATING

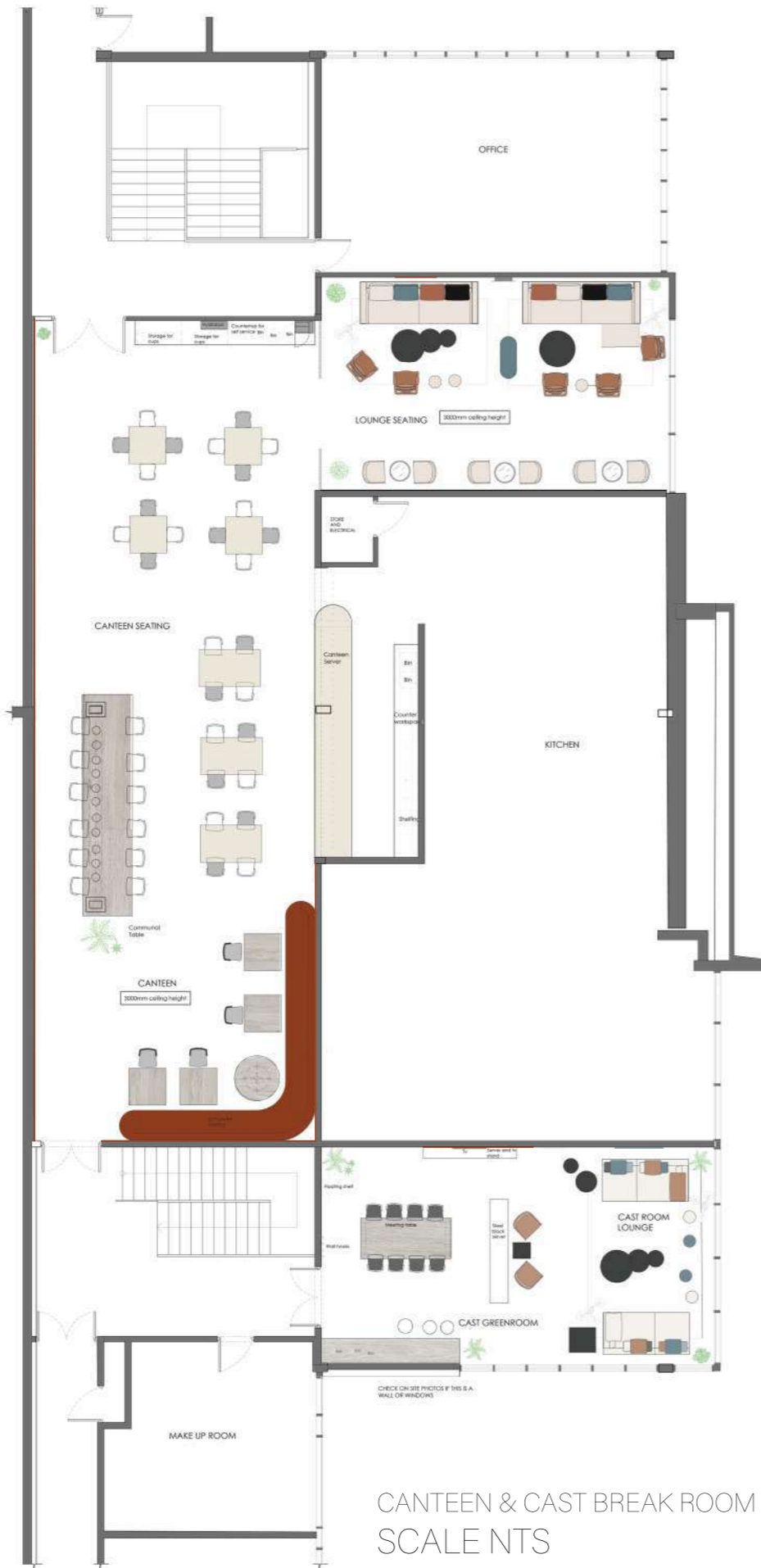


FILM STUDIO
CANTEEN LOUNGE PERSPECTIVES

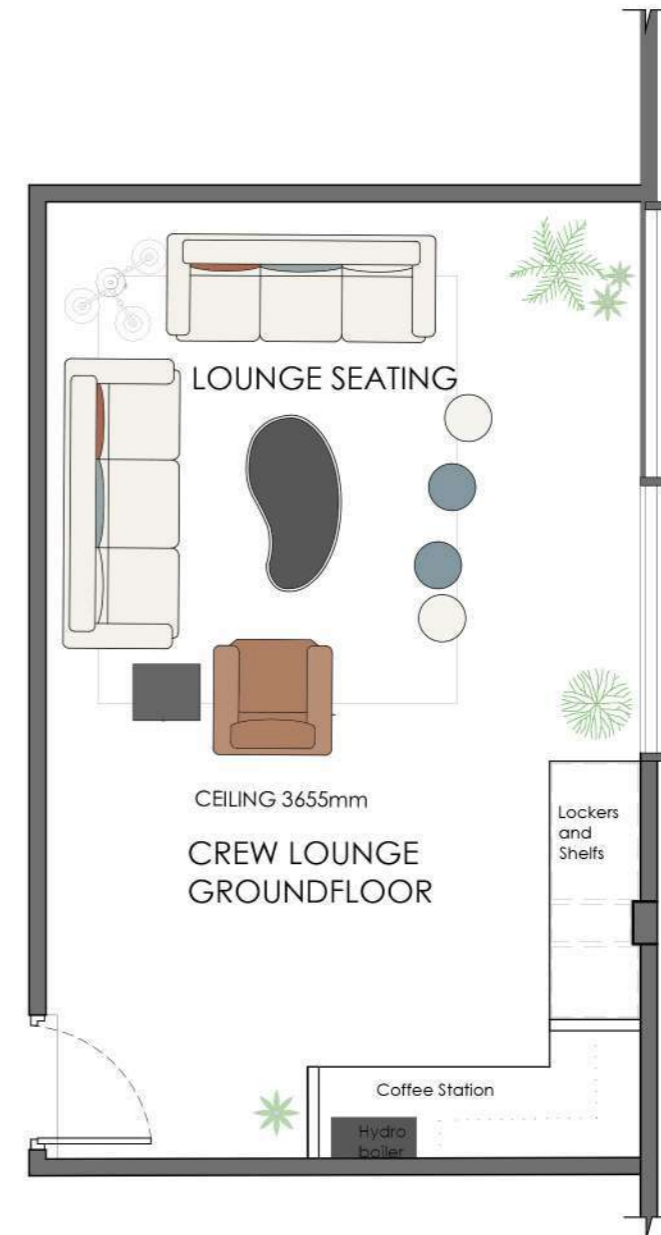




CAST MEETING TABLE



CANTEEN & CAST BREAK ROOM
SCALE NTS



CREW BREAK ROOM
SCALE NTS

06

TRILL ROAD

Cape Town, Observatory, Trill road 73-75

BRIEF

THE BRIEF IS TO REDESIGN THE FREESTANDING VICTORIAN DWELLING, SITUATED IN HEART OF OBSERVATORY, CAPE TOWN, AT # 63 – 65 TRILL ROAD.

YOUR CLIENT IS A FINANCIAL BUSINESS EXECUTIVE (AGED 32-45). HE WILL BE SHARING THE SPACE WITH HIS WIFE, SHE IS A WELL PUBLISHED WRITER. THEY HAVE PURCHASED THIS PROPERTY AS A LONG TERM RESIDENCE. THIS CLIENT IS LOOKING FOR A COMBINATION OF MODERN AND CLASSICAL ELEMENTS, STILL IN KEEPING WITH THE CURRENT TRENDS, BUT FUSED WITH A SOFTER, MORE SOPHISTICATED FEEL. THEY ARE VERY SPECIFIC ABOUT NOT WANTING SOMETHING THAT WILL DATE QUICKLY, AND ALTHOUGH ON FIRST IMPRESSION THEY SEEM QUITE ORDINARY, WHEN IT COMES TO GOOD TASTE AND STYLE, THEY KNOW WHAT THEY'RE TALKING ABOUT. THE BUILDING IS A HERITAGE BUILDING, AND THEREFORE THE FACADE MAY NOT BE ALTERED. OPENINGS MUST REMAIN INTACT, AND AS IS. SOME REQUIREMENTS INCLUDE TO SHOWCASE THE EN-SUITE BATHROOM AND KITCHEN DETAIL AND TO USE A CHOSEN DESIGNER TO INSPIRE YOUR SPACE

CONCEPT

I HAVE DESIGNED A SPACES SPECIFICALLY FOR MY CLIENT. I HAVE AIMED TO CREATE A BEAUTIFUL, SOPHISTICATED, MINIMAL CLASSIC-MODERN INTERIOR THAT HAS LOTS OF POPS OF COLOUR FOR THAT FUN QUIRKY ELEMENT. MY SPACE HAS BEEN INSPIRED BY MY CHOSEN INTERIOR DESIGNER, JEREMIAH BRENT, HE LOVES TO USE CLASSICAL SPACES, AND ADDS POPS OF MODERNISM THROUGH COLOURS AND FURNITURE, I HAVE AIMED TO EMBRACE HIS CHARACTERISTICS AND SHOWCASE IT IN MY DESIGN. I HAVE USED BRIGHT COLOURS THAT WON'T DATE QUICKLY, AND A MIXTURE OF MODERN AND PAST DESIGN AESTHETICS.





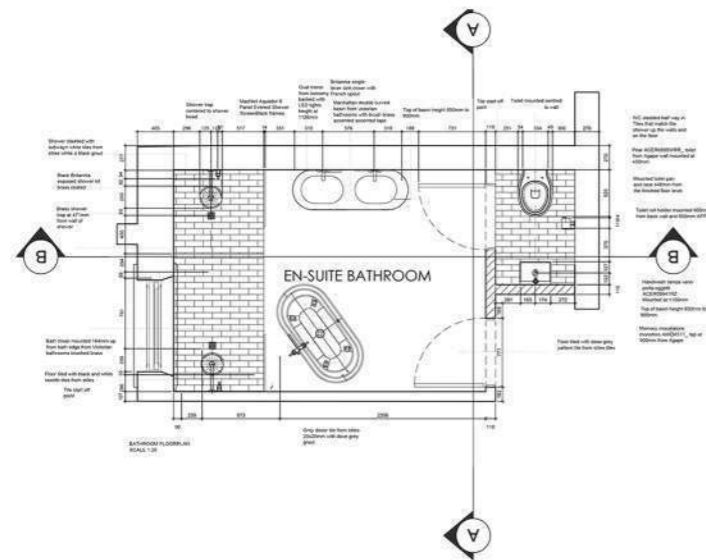
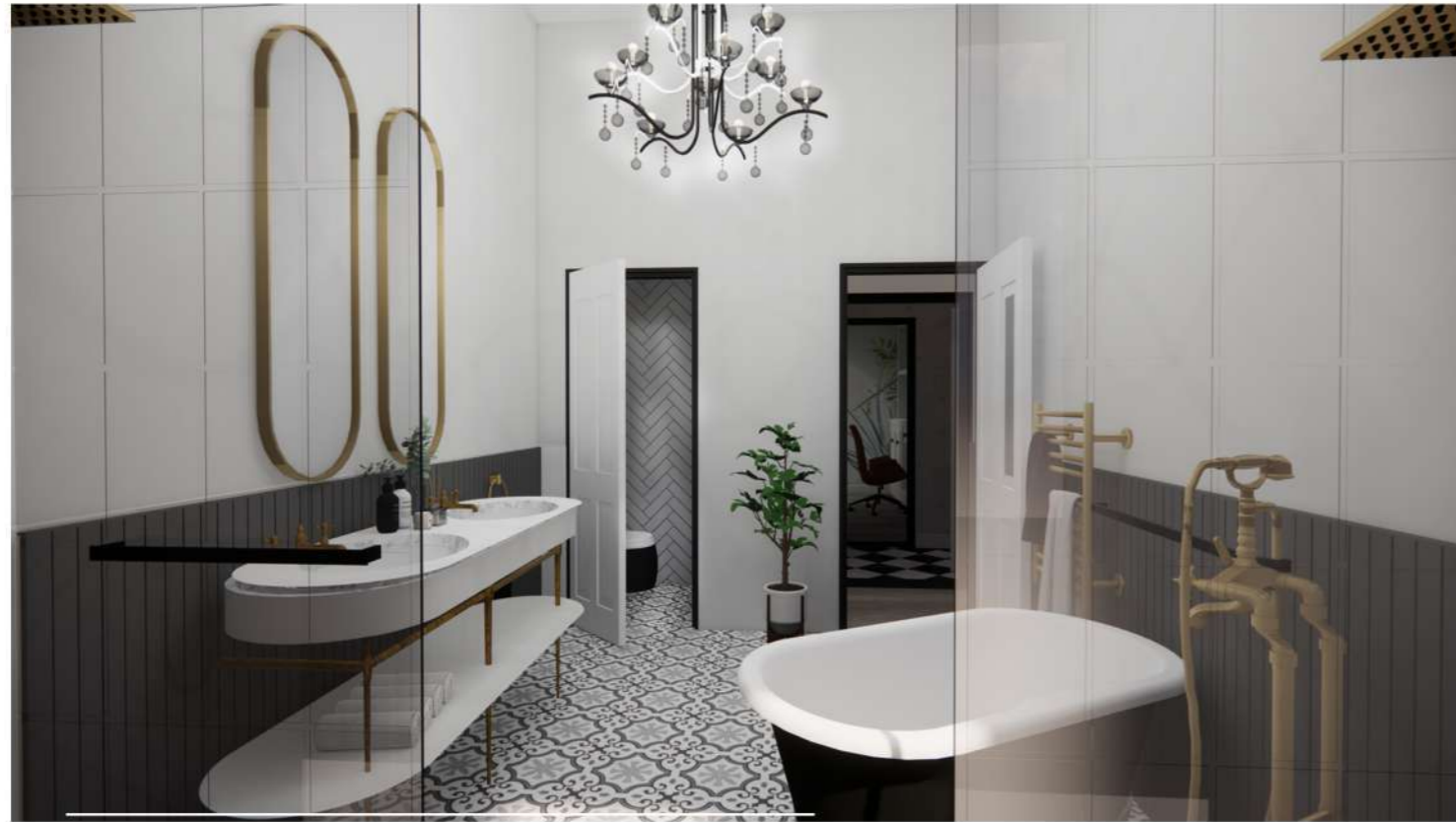
LOUNGE



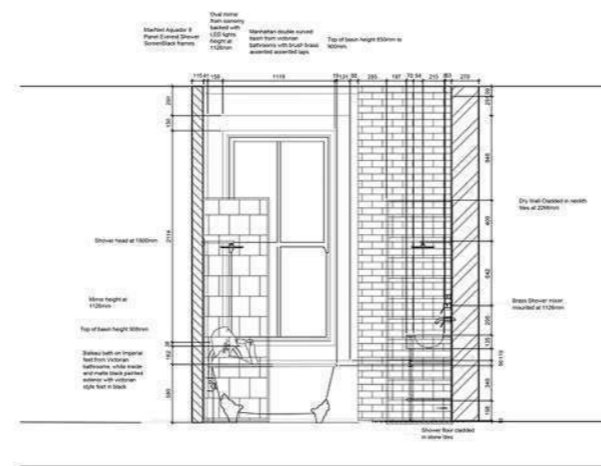
DINING ROOM



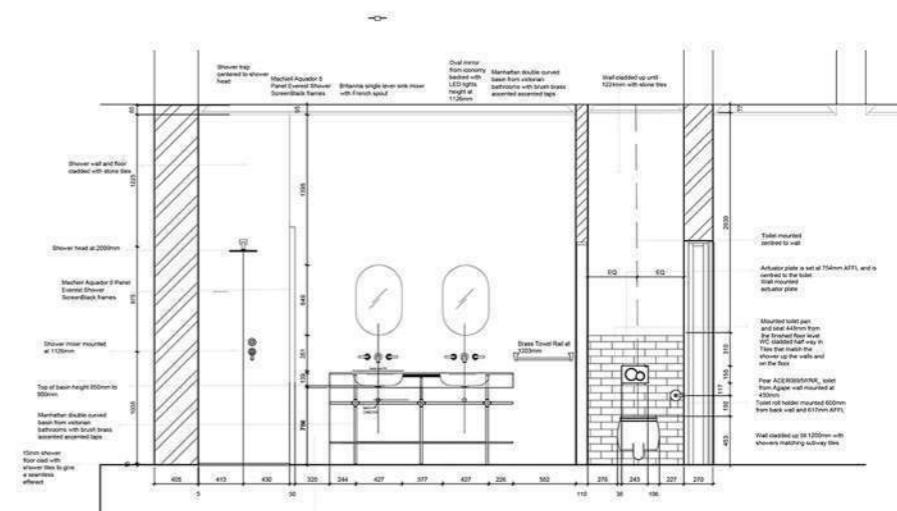
RESIDENTIAL DESIGN BATHROOM TECHNICALS



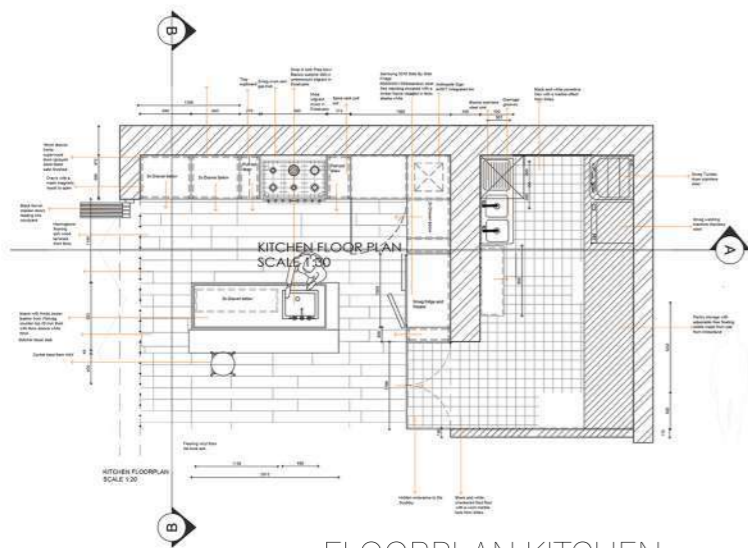
FLOORPLAN EN SUITE



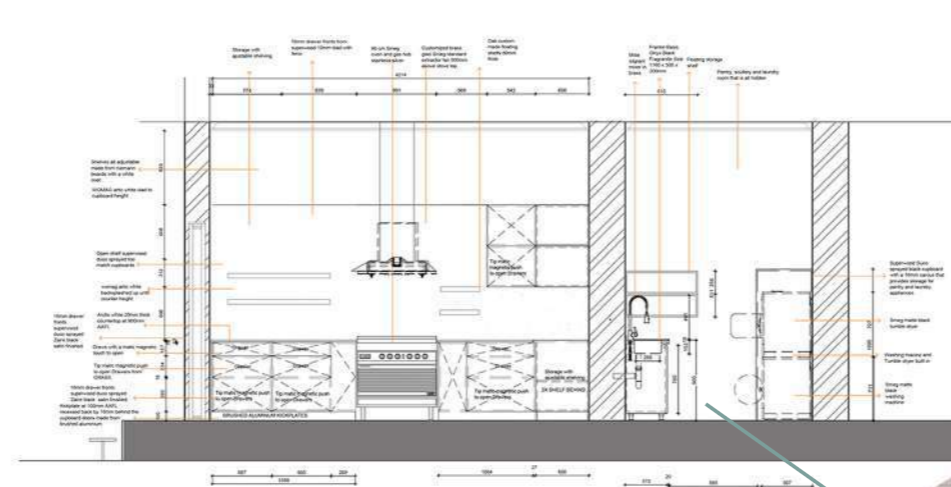
ELEVATION AA



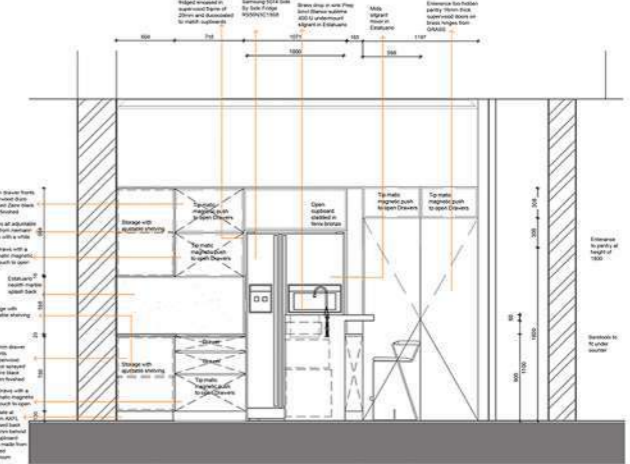
ELEVATION BB



FLOORPLAN KITCHEN



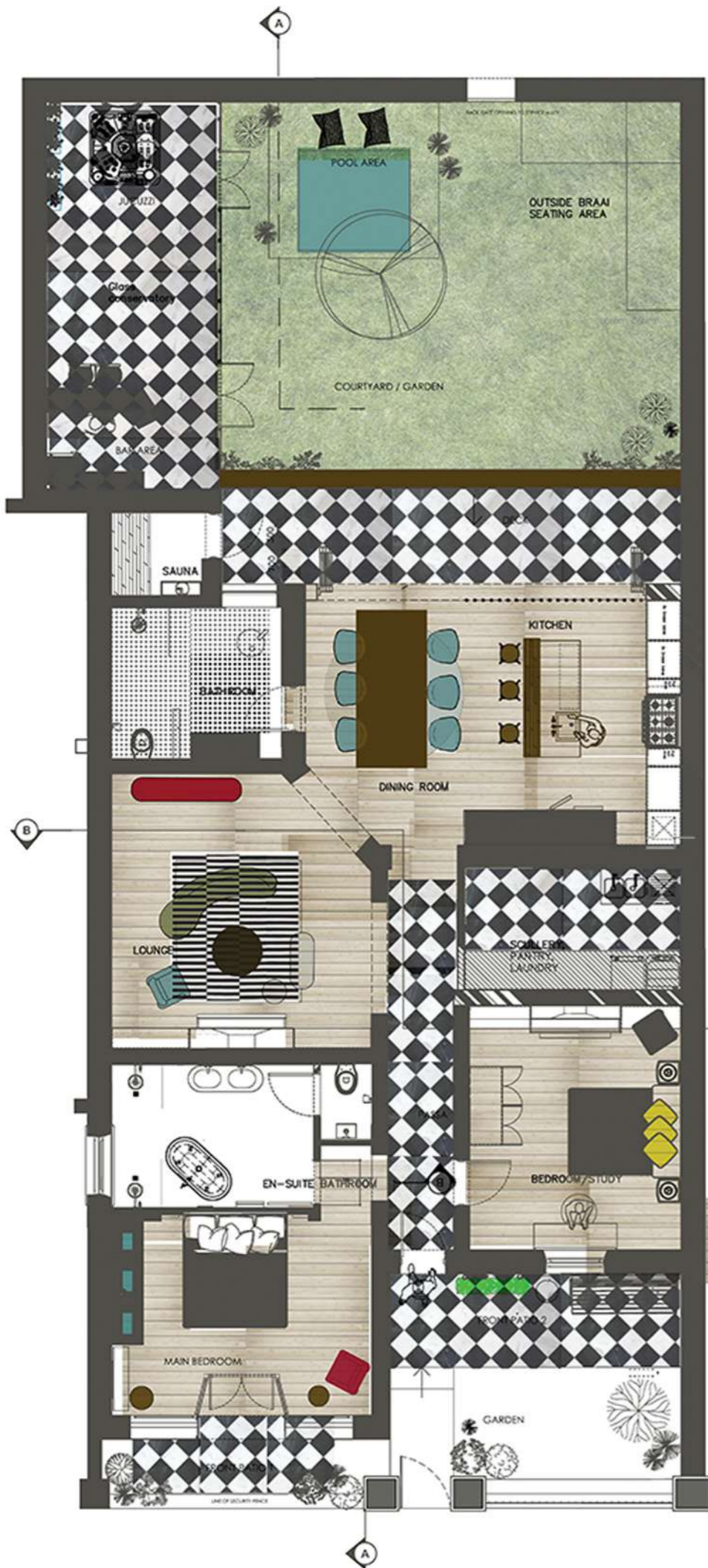
ELEVATION AA



ELEVATION BB



HIDDEN PANTRY
PERSPECTIVE



63-65 TRILL ROAD
GROUND FLOORPLAN
SCALE NTS



63-65 TRILL ROAD
ELEVATION AA
SCALE NTS



63-65 TRILL ROAD
ELEVATION BB
SCALE NTS

07

KITCHEN

KSA KITCHEN DESIGN COMPETITION

BRIEF

THE BRIEF WAS TO DESIGN A KITCHEN FOR MR. AND MRS. A THAT ARE IN THEIR LATE 40'S. THEY HAVE BOUGHT A LARGE, OLDER HOME IN A GOOD AREA AND ARE RENOVATING IT, LOOKING TO KEEP SOME OF THE ORIGINAL FEATURES BUT COMBINE THEM WELL WITH CONTEMPORARY ASPECTS. WHILE THEY ARE NOT SHORT OF MONEY THEY BELIEVE IN BEING SENSIBLE WITH EXPENSES. THEY ARE LOOKING FOR A SOPHISTICATED CONTEMPORARY KITCHEN THAT TIES IN WELL WITH THE OLDER ELEMENTS OF THE HOME. THEY WANT THE KITCHEN TO HAVE LONGEVITY - THEY DON'T WANT TO HAVE TO DO THIS AGAIN. IT NEEDS TO BE ERGONOMICALLY DESIGNED TO WORK FOR THEM AS THEY GET OLDER. THEY BOTH LIKE TO COOK SO NEED PLENTY WORK SURFACE AND EASY ACCESS TO THEIR COOKING AND BAKING EQUIPMENT. THEY ENJOY TO COLLECT WINE AND ENTERTAIN. THEIR KITCHEN WILL BE OPEN-PLAN TO THE MAIN LIVING ROOM WHICH HAS MORE TRADITIONAL ELEMENTS IN IT, SO THE KITCHEN DESIGN HAS TO FLOW WELL INTO THIS SPACE CREATING A HARMONIOUS LINK BETWEEN THE OLD AND THE NEW.

CONCEPT

I HAVE DESIGNED A KITCHEN THAT IS CLASSIC CONTEMPORARY. I WANT MY KITCHEN TO BE OPEN PLANNED AND SPACIOUS. THE DESIGN MUST LOOK SLEEK AAND MINIMAL , KEEPING UP WITH THE CURRENT TRENDS. USING CONTRASTING MATTEE COLOURS ELEMENTS OF NATURAL LIGHT OAK WOOD. I WANT MY KITCHEN TOLOOK AND FEEL SOPHISTICATED WITHH A CLASSICAL TOUVH THAT BRINGS THE OLD INTO THE MODERN DESIGNED KITCHEN DESIGN.THE SPACE IS DESIGNED TO HIDE AWAY THE MESSIN A HIDDEN SCULLERY WHILE THE BEAUTIFUL COUNTERTOP SURFACE FOR FOOD PREP ABND ENTERTAINING GUESTS, THAT MAKES IT FUN TO WORK AND ENTERTAIN IN.



FIRST IMPRESSION PERSPECTIVE



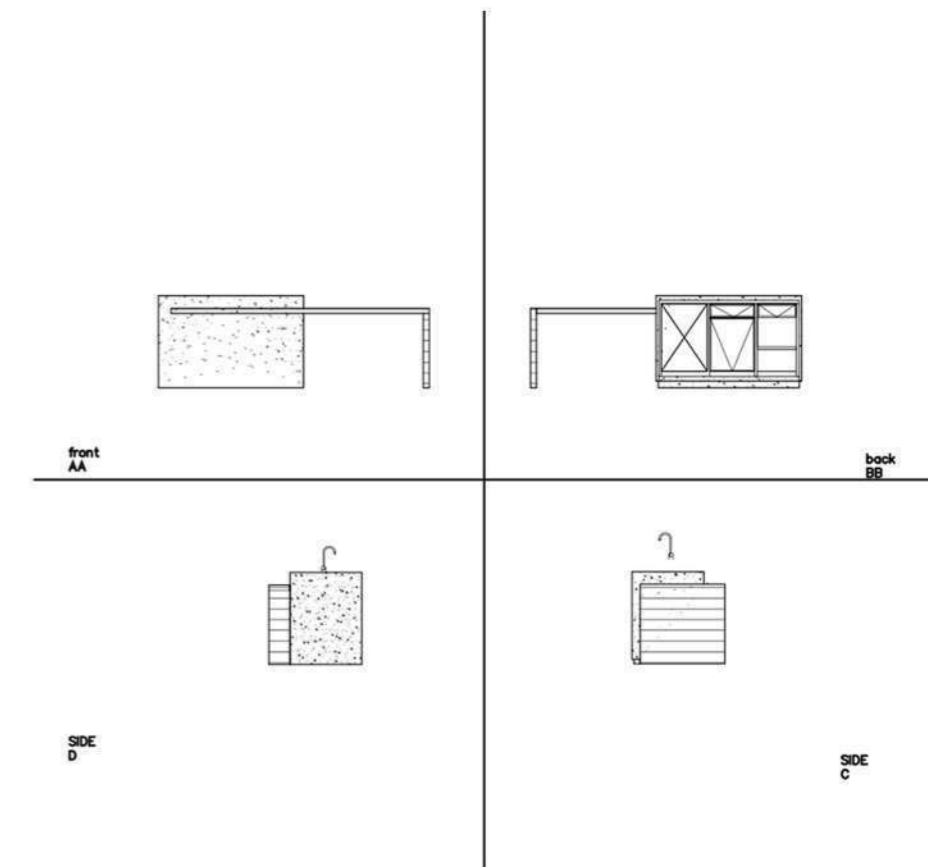
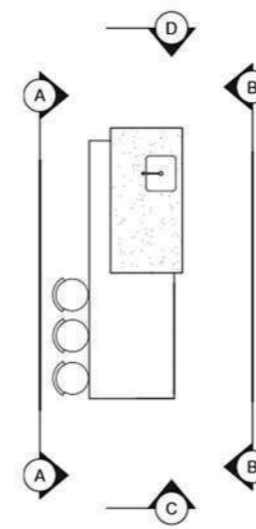
BACK OF ISLAND PERSPECTIVE



KITCHEN PERSPECTIVE



WINDOW SEATING PERSPECTIVE



ISLAND DETAIL
SCALE NTS



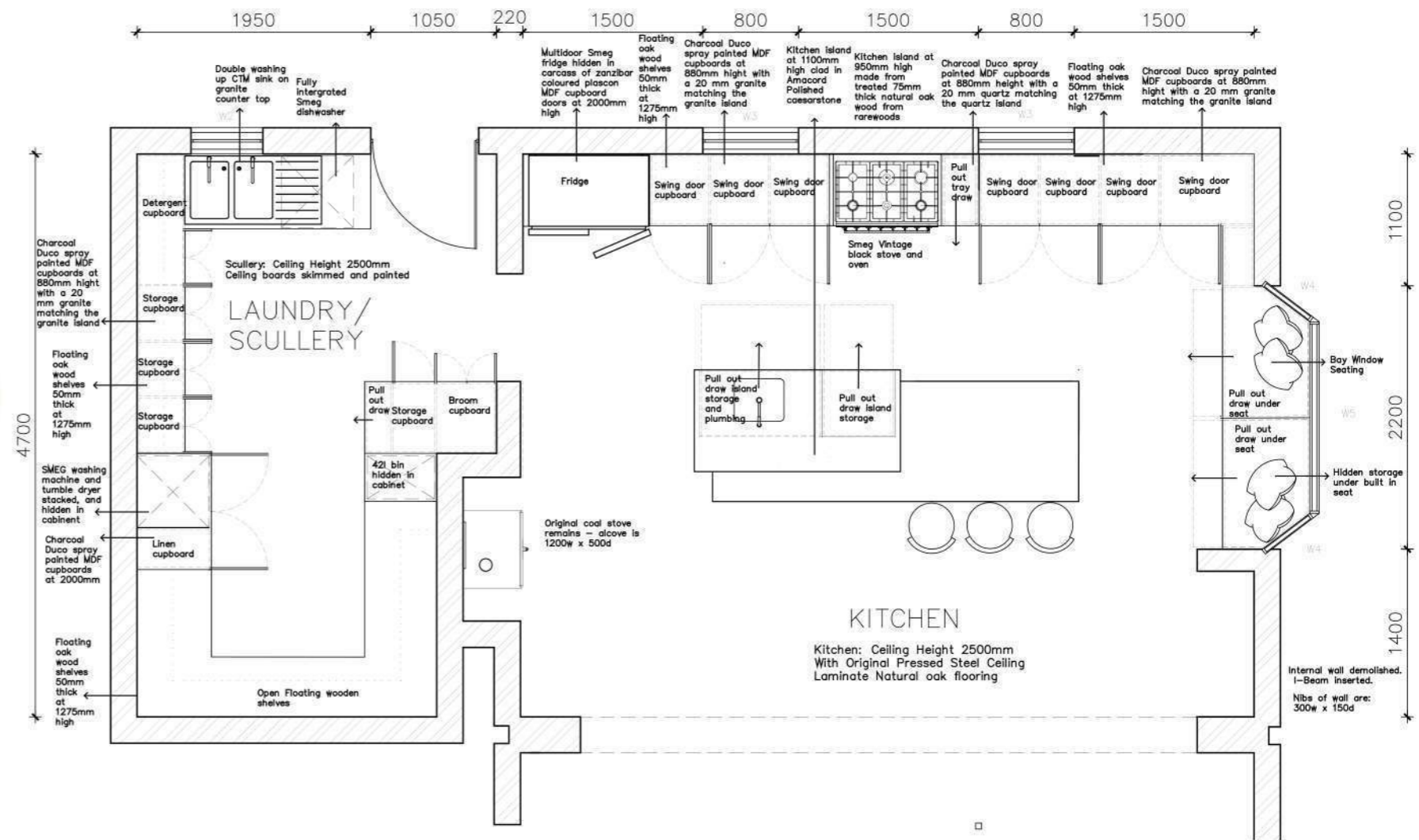
PANTRY PERSPECTIVE



PANTRY STORAGE PERSPECTIVE



MATERIAL CLUSTER



KITCHEN PLAN
SCALE NTS

08

RETAIL

BRYANT PARK, NEW YORK

BRIEF

THE BRIEF WAS TO DESIGN EDGY, RETAIK STORE WITHIN THE CONFINES OF A SHIPPING CONTAINER. THIS MUST BE A UNIQUE 'POP UP' CONCEPT STORE THAT PUSHES THE BOUNDARY OF YOUR SAFE, EVERYDAY RETAIL EXPERIENCE, AND SHOULD BE LEAVING CUSTOMERS WITH A MEMRABLE EXPERIENCE. THE SHIPPING CONTAINER CAN BE BASED ANYWHERE IN THE WORLD.

CONCEPT

OXYGEN WAS DESIGNED TO BE THE LITTLE BIT OF NATURE IN NEW YORKS CONCRETE JUNGLE. I HAVE DESIGNED AN EDGY, 'GREEN' RETAIL SPACE WITHIN AN SHIPPING CONTAINER THAT IS FILLED TO THE BRIM WITH PLANTS OF ALL SHAPES AND SIZES. I WANTED TO GIVE THE SPACE A FRESH , EARTHY, GREEN AESTHETIC. THE CLIENTS WALKING INTO OXYGEN WILL BE TRANSPORTED INTO NAATURE, WHERE THEY CAN TAKE A BIG BREATH OF FRESH AIR AND ESCAPE FROM THE POLLUTED STREETS OF NEW YORK.





EXTERIOR PERSPECTIVE

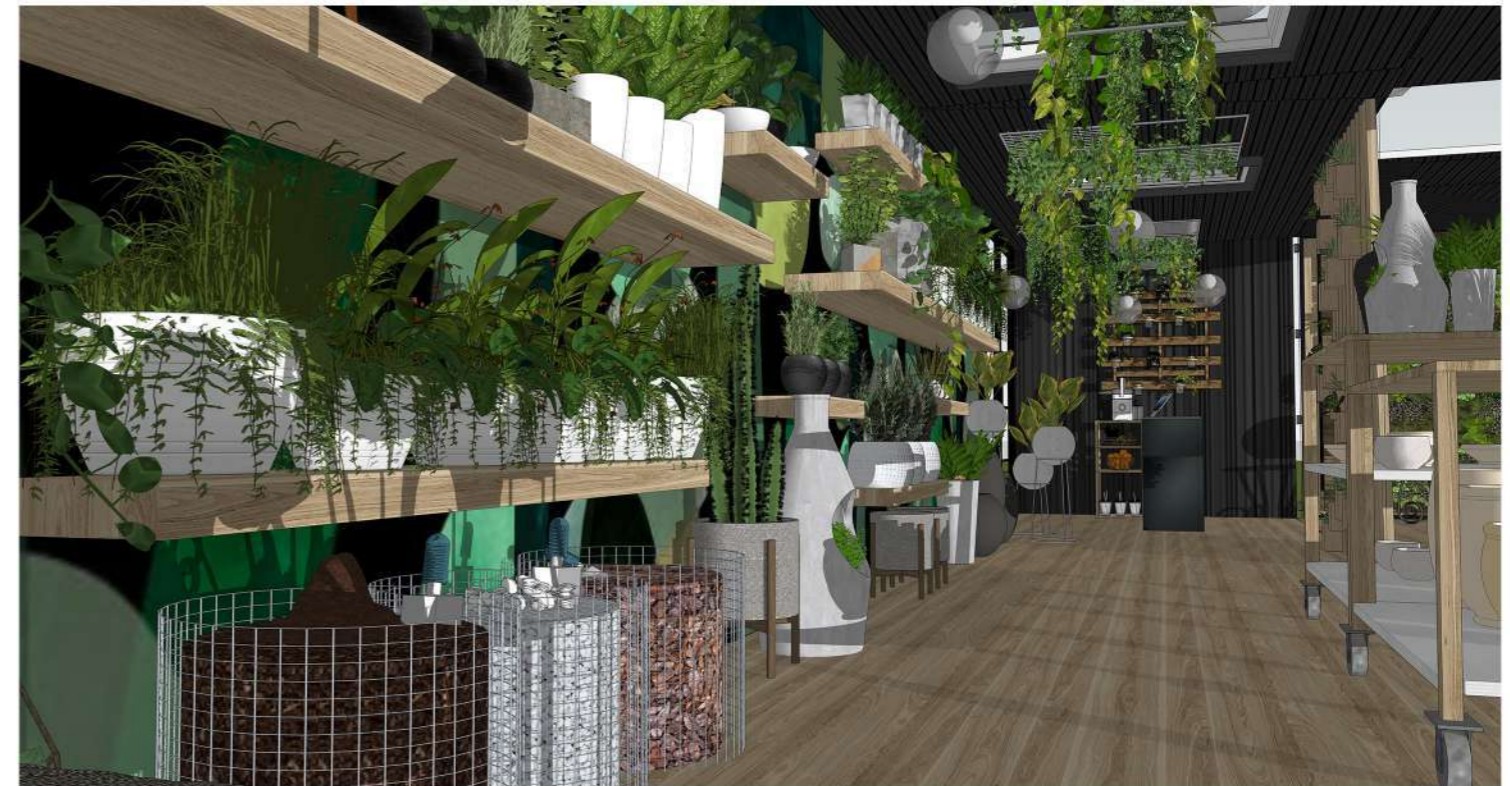




PAYPOINT PERSPECTIVE



ROUND WINDOW PERSPECTIVE



09

PESCE AZZURO

CAPE TOWN, CNR. BREE + WATERKANT STREET

BRIEF

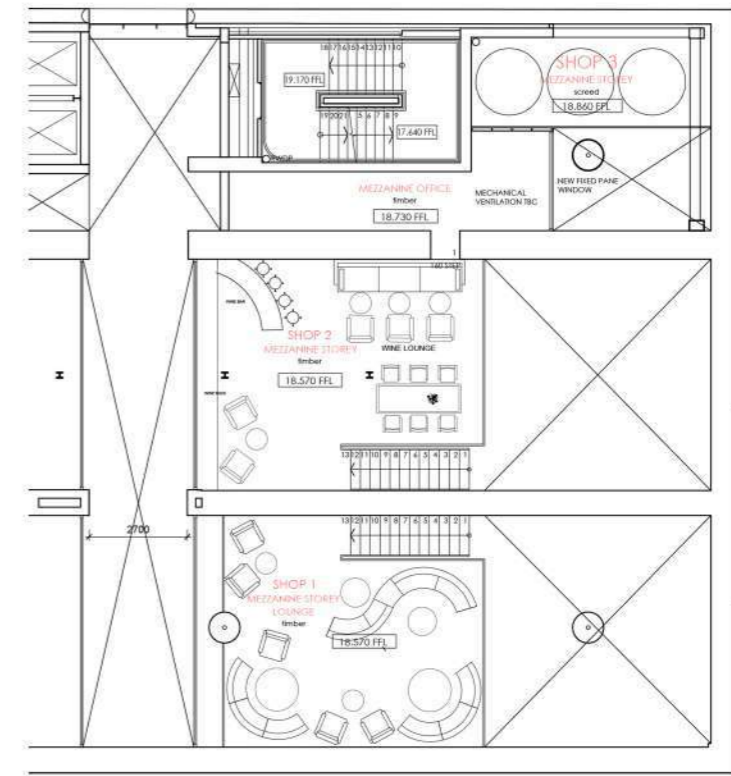
CURRENTLY SITUATED IN WOODSTOCK, PESCE AZZURO STRIVES TO OFFER THE ULTIMATE CONTEMPORARY ITALIAN SEAFOOD CUISINE. IN AUGUST 2021, YOUR CLIENT WILL BE MOVING THEIR PREMISES TO BREE STREET, AND HAS APPOINTED YOU TO CONCEPTULIZE AND DESIGN THE INTERIOR OF THIS NEW, AND EXCITING SPACE. THE RESTAURANT REQUIRES TO SEAT 60 PAX MINIMUM. THERE MUST BE OUTDOOR SEATING, WINE LOUNGE SEATING AND A DELI.

CONCEPT

THE NEW AND IMPROVED PESCE AZZURO THAT IS NOW BASED IN THE BUSTLING CITY OF CAPE TOWN. I HAVE USED QUITE A NEUTRAL COLOUR PALLETTE AS REQUESTED, WITH ACCENTS OF COLOUR AND ART TO MAKE THE SPACE CONTEMPORARY, SOPHISTICATED AND FUN. GOLD IS USED IN THE SPACE TO SHOWCASE THE GLITS AND GLAM OF THE SPACES DESIRED ATMOSPHERE. THE SPACE IS DESIGNED SO THAT PRIVTE EVENTS CAN BE HELD UPSTAIRS, WHILE GUESTS CAN STILL COME FOR MEALS ANYTIME THROUGHOUT THE DAY. THE DELI IS DESIGNED TO SUPPLY CAPETONIANS WITH FRESH FOOD AND BAKES TO TAKE HOME, OR ENJOY WITH THEIR ITALIAN ROASTED COFFEE THAT THEY CAN ENJOY WITH BREAKFAST, OR A CROSSAINT AT THE DELI SEATING AREA.



UPSTAIRS COCKTAIL LOUNGE



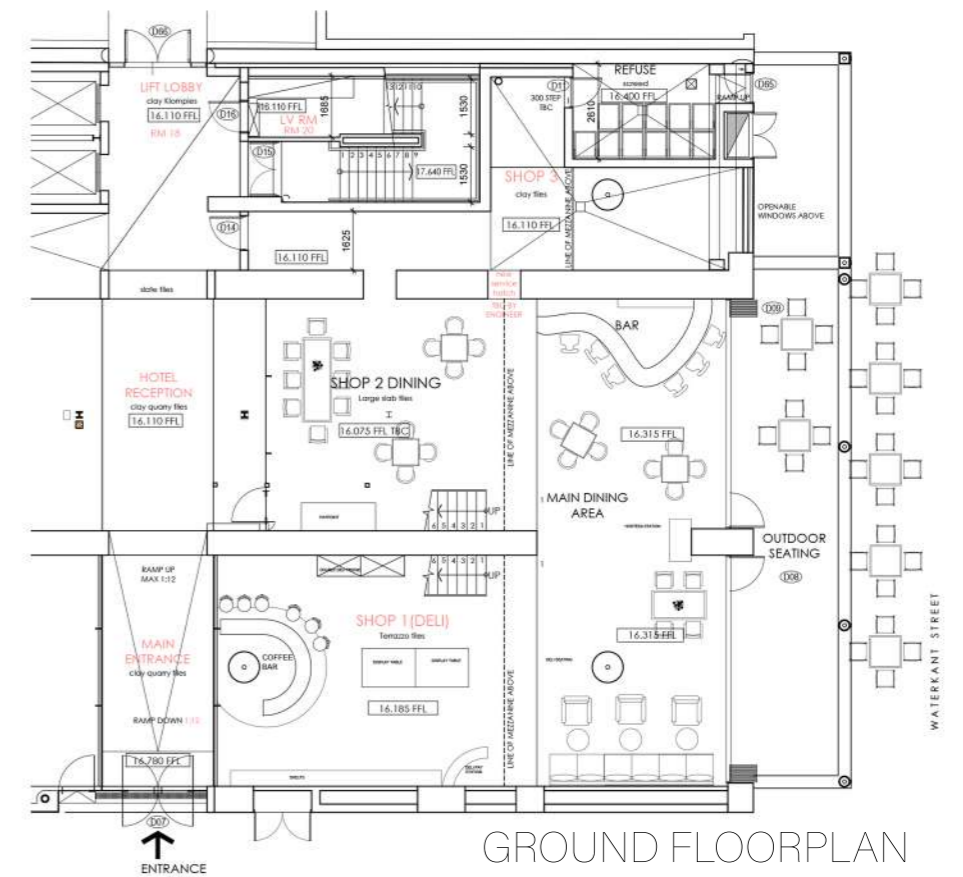
1ST FLOOR FLOORPLAN



UPSTAIRS WINE LOUNGE



MATERIALS



BRIEF

THE BRIEF WAS TO DRAW, INK AND RENDER A 3D AXONOMETRIC PROJECTION OF A DRAWING ROOM

DRAWING ROOM

10

HARTLEY HOUSE

AXONOMETRIC



HARTLEY HOUSE | DRAWING ROOM NTS



11 THE NAUTICAL EYE

PENDANT LIGHT

BRIEF



THE BRIEF WAS TO DESIGN AND CREATE A WORKING PENDANT LIGHT

CONCEPT

THE NAUTICAL EYE WAS DESIGNED AS A 'NATURAL' COASTAL PENDANT LIGHT THAT IS UNIQUELY DESIGNED AND MADE FROM NATURAL MATERIALS AND FIBRES. THIS IS SPECIFICALLY DESIGNED FOR THOSE THAT ARE IN TOUCH WITH NATURE, AND DESIRE A NATURAL PIECE OF FURNITURE TO MATCH THE BEAUTY OF A (RESIDENTIAL OR COMMERCIAL) DESIGNED COASTAL INTERIOR SPACE

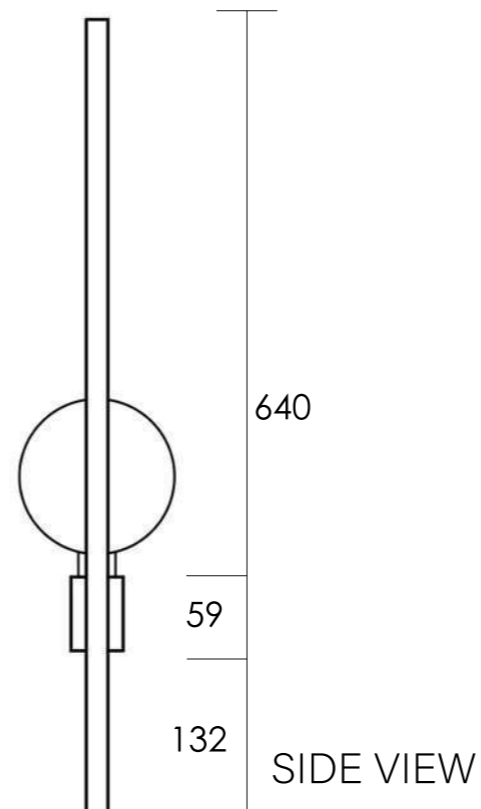
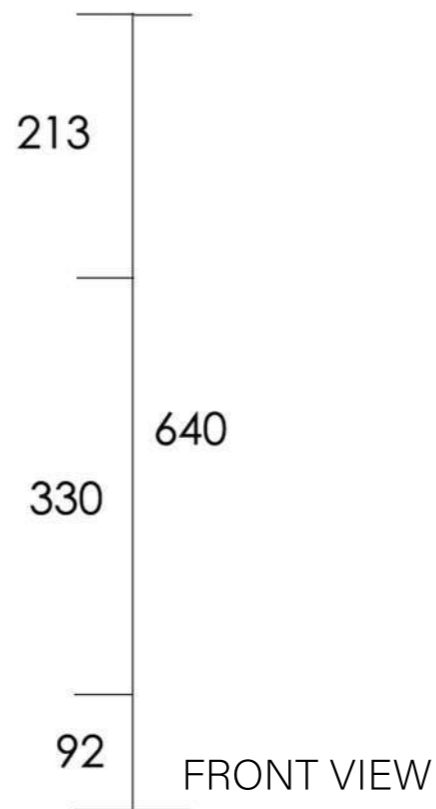
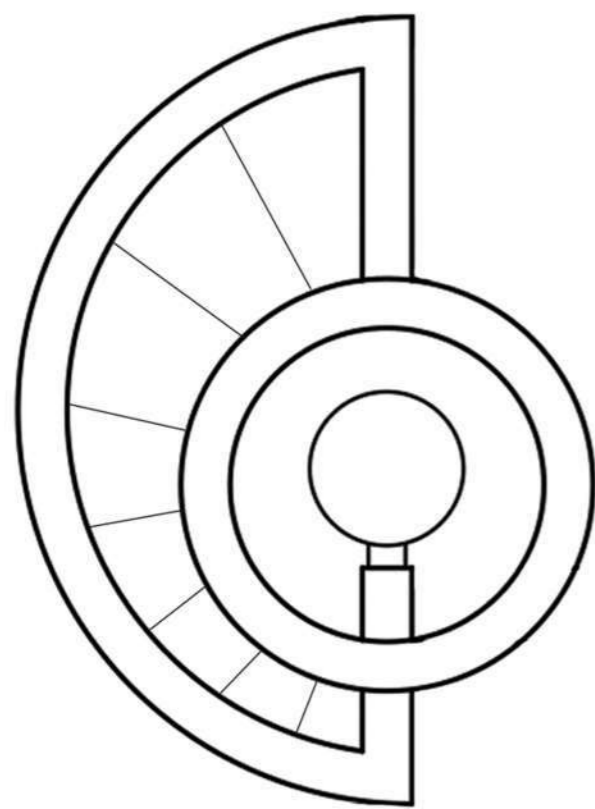


PENDANT LIGHT IN A COASTAL INTERIOR

PRODUCT DESIGN
PENDANT LIGHT



RENDERED PERSPECTIVE OF
PENDANT LIGHT NTS



- Raw Pine Wood from Lumber City
- Pine white washed
- Round Electric Cable covered by Jute fabric RN06 from Creative Cables
- Twisted Electric Cable covered by Natural Linen TN01 Neutral from Creative Cables
- K Light 4w 2200k LED E27 G125 supplied by Newport Lighting
- White bulb holder from Eagle Lighting. Covered with Twine from Builders Warehouse
- Old White Annie Sloan Old White paint

MATERIALS

TECHNICALS OF PENDANT LIGHT

11

PRODUCT DESIGN
UPCYCLE

PINK BOKKIE

BESPOKE TIMBER STOOL

BRIEF

THE BRIEF WAS TO UPCYCLE, AND BREATHE NEW LIFE, INTO A SIMPLE TIMBER STOOL. YOU MUST TRANSFORM YOUR SELECTED STOOL INTO SOMETHING FRESH, RELEVANT AND EXCITING.

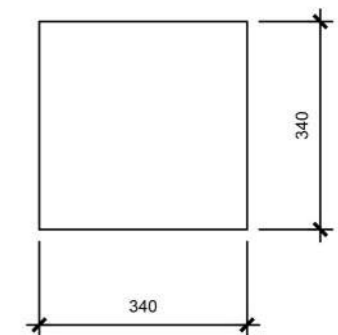
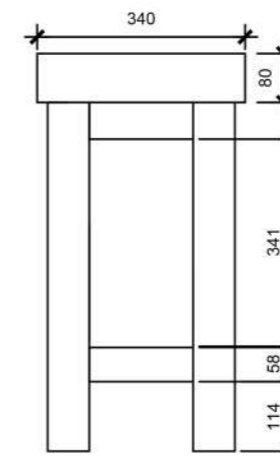
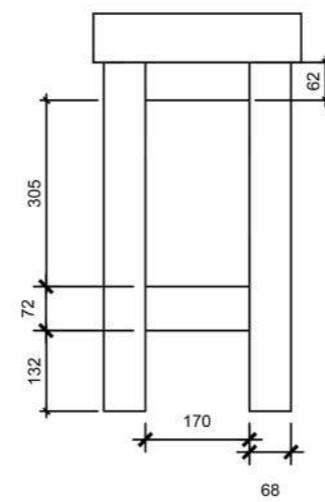
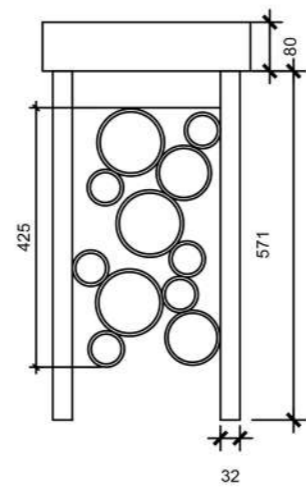
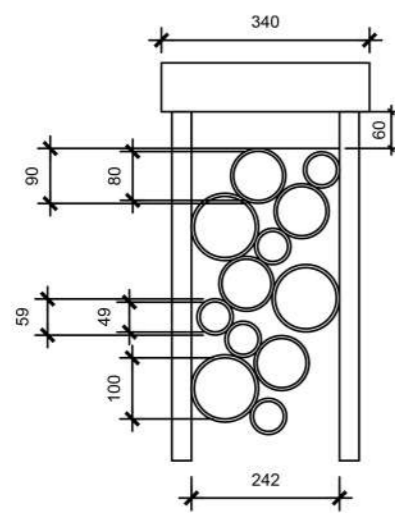
THIS TASK SHOULD ENCOURAGE YOU TO VIEW CONSUMPTION DIFFERENTLY, BY BREATHING NEW LIFE INTO AN OTHERWISE ORDINARY OBJECT.

THE PIECE MUST BE UNIQUE + GLOBALLY TREND WORTHY. USING YOUR IMAGINATION TO CREATE CONCEPT/S FOR YOUR PRODUCT WITH A TANGIBLE WOW FACTOR WITH COMMERCIAL "VALUE".

NO LESS THAN 60% OF THE STOOLS EXISTING STRUCTURE MUST REMAIN INTACT.

CONCEPT

I HAVE UPCYCLED YOUR CLASSIC OLD BORING TIMBER STOOL INTO A QUIRKY, EXCITING MULTIPURPOSE STOOL THAT HOLDS YOU AND YOUR WINE! THE STOOL HAS A BUILT IN RACK THAT ALLOWS STORAGE FOR MULTIPLE ITEMS INCLUDING BOTTLES, MAGAZINES AND SO MUCH MORE. IT HAS A QUIRKY, YET INDUSTRIAL AESTHETIC TO FIT THE LOOK AND FEEL OF OF A MODERN FARMHOUSE INTERIOR.



12 SURFACE DESIGN

TEXTILES

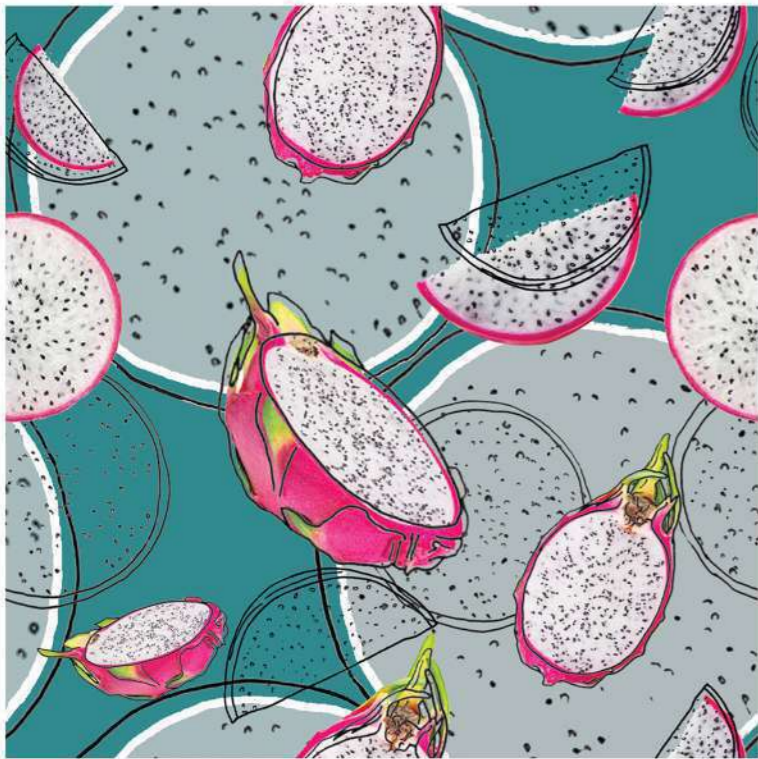
BRIEF

THE BRIEF WAS TO DESIGN TEXTILES FROM OUR OWN ORIGINAL REPEATING PATTERNS THAT IS INSPIRED BY THE GIVEN TOPICS

TOPICS

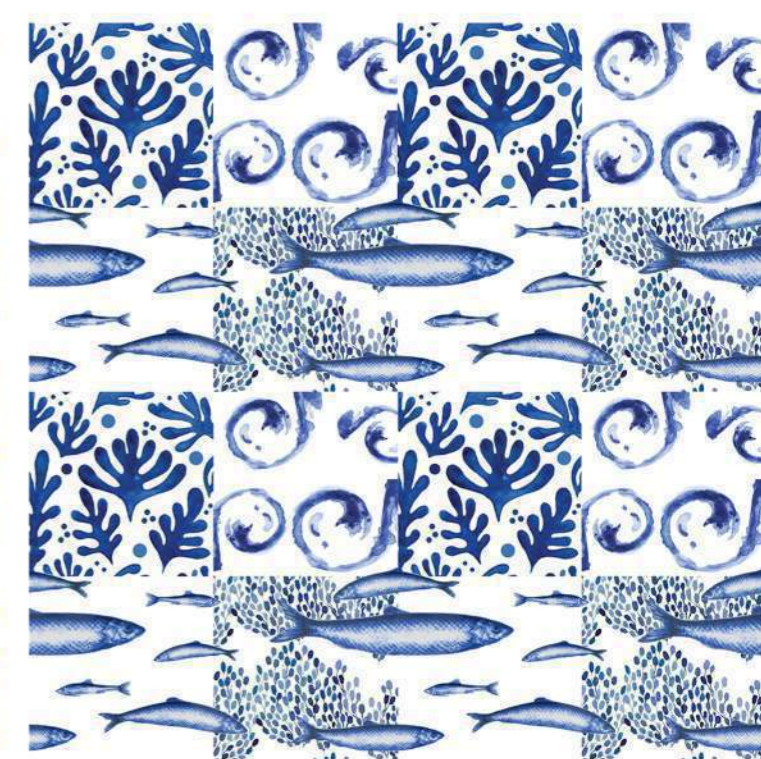
-TUTTI FRUTTI

-DELFT



TUTTI FRUITTI

TEXTILE INSPIRED BY THE USE OF FRUIT AND HAND DRAWINGS



DELFT

TEXTILE INSPIRED BY THE CLASSICAL BLUE AND WHITE DELFT PATTERN BUT TRANSFORMING IT INTO MY OWN STYLE

13 CAPE LOOMS

VOORTREKKER ROAD, SALT RIVER IN CAPE TOWN

BRIEF

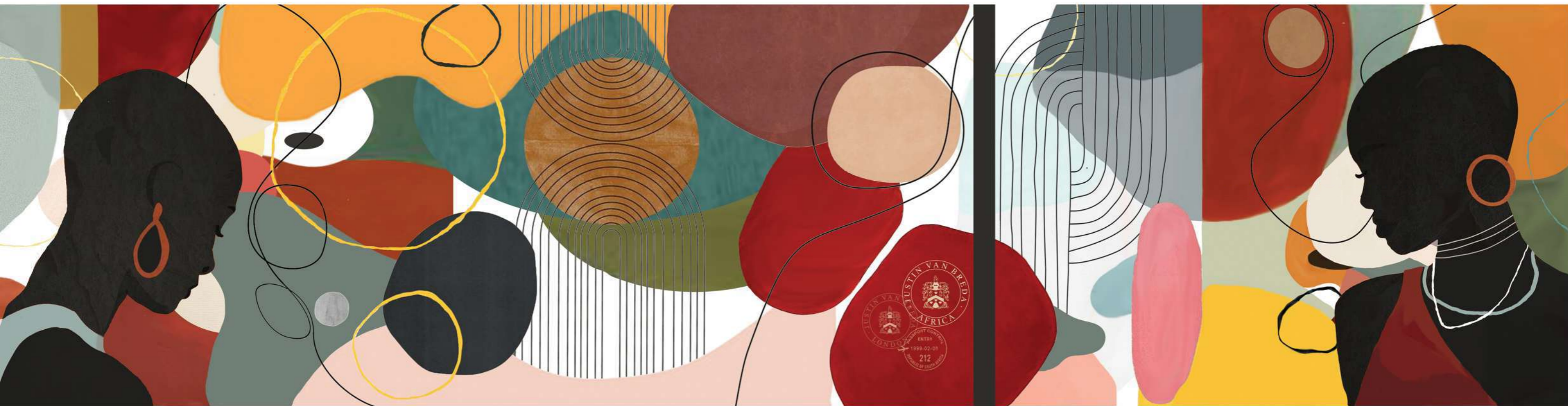
INTERIOR DESIGNER JUSTIN VAN BRED A WANTED US TO CREATE A MURAL, WHICH WILL REPRESENT THE ETHOS, FIBERS, AND COMMUNITY OF HIS NEW RUG COMPANY, CAPE LOOMS. IT MUST BE AT ONCE MODERN AND ALSO HINT AT OUR HISTORY AND BRAND ASSOCIATIONS. IT WILL HANG IN THE WORKSHOP ABOVE THE BIGGEST LOOM WHICH IS 6.5M WIDE.

CONCEPT

THIS MURAL HAS BEEN DESIGNED TO CELEBRATE THE LIFE AND CULTURE OF THE COMMUNITY INVOLVED IN PRODUCING THE RUGS FOR CAPE LOOMS. INSPIRATION FOR THE MURAL CAME FROM A VISIT TO THE CAPE LOOMS WORKSHOP WHERE WE WERE FORTUNATE ENOUGH TO MEET SOME OF THE POTENTIAL WOMEN INVOLVED IN THE COMPANY. THE MURAL CAPTURES THE RICH HISTORY AND CULTURE OF AFRICA BY USING SOFT EARTHY COLOURS WHICH REPRESENT THOSE OF THE AFRICAN LANDSCAPE. VIVID COLOURS HAVE BEEN INTRODUCED TO MATCH THOSE OF THE BEAUTIFUL DYED WOOLS USED BY CAPE LOOMS. THE LINES DEPICTED IN THE MURAL ILLUSTRATE THE TIGHTLY PULLED WOOL AND MOHAIR ON THE LOOMS, WHILE THE ORGANIC SHAPES REPRESENT THE BUNDLES OF WOOL USED. THE MURAL HAS BEEN CALLED "KUUMBA" WHICH IS AN AFRICAN WORD MEANING "TO DO ALWAYS AS MUCH AS WE CAN IN ORDER TO LEAVE OUR COMMUNITY MORE BEAUTIFUL AND BENEFICIAL THAN WHEN WE INHERITED IT". OVERALL, THE MURAL THEREFORE CAPTURES THE STORY OF THE AFRICAN WOMEN INVOLVED IN CREATING BEAUTIFUL ART AND PRODUCTS MADE FROM THE LOCALLY SOURCED MOHAIR AND WOOL, AS WELL AS THE STORY OF THE CAPE LOOMS COMPANY.

KUUMBA





KUUMBA



14 PHOTOGRAPHY

ELLERMAN HOUSE, BANTRY BAY, CAPE TOWN

BRIEF

WE HAVE BEEN BRIEFED TO CAPTURE A INTERIOR SPACE THAT EVIKES AN EMOTION IN US., WE HAD TO TAKE PHOTOGRAPHS AT THE ELLERMAN HOUSE, A BEAUTIFUL GUEST HOUSE BASED IN BANTRY BAY. THE SPACE MUST PORTRAY OUR PHOTOGRAPHY SKILLS LEARNNT IN OUR PHOTOGRAPHY COURSE COMPLETED AT DESIGN TIME



SCENE CAPTURED IN THE STUDY

THE END

Thank You

HOPE YOU ENJOYED

THE END

06

TRILL ROAD

Cape Town, Observatory, Trill road 73-75

BRIEF

THE BRIEF IS TO REDESIGN THE FREESTANDING VICTORIAN DWELLING, SITUATED IN HEART OF OBSERVATORY, CAPE TOWN, AT # 63 – 65 TRILL ROAD.

YOUR CLIENT IS A FINANCIAL BUSINESS EXECUTIVE (AGED 32-45). HE WILL BE SHARING THE SPACE WITH HIS WIFE, SHE IS A WELL PUBLISHED WRITER. THEY HAVE PURCHASED THIS PROPERTY AS A LONG TERM RESIDENCE. THIS CLIENT IS LOOKING FOR A COMBINATION OF MODERN AND CLASSICAL ELEMENTS, STILL IN KEEPING WITH THE CURRENT TRENDS, BUT FUSED WITH A SOFTER, MORE SOPHISTICATED FEEL. THEY ARE VERY SPECIFIC ABOUT NOT WANTING SOMETHING THAT WILL DATE QUICKLY, AND ALTHOUGH ON FIRST IMPRESSION THEY SEEM QUITE ORDINARY, WHEN IT COMES TO GOOD TASTE AND STYLE, THEY KNOW WHAT THEY'RE TALKING ABOUT. THE BUILDING IS A HERITAGE BUILDING, AND THEREFORE THE FACADE MAY NOT BE ALTERED. OPENINGS MUST REMAIN INTACT, AND AS IS. SOME REQUIREMENTS INCLUDE TO SHOWCASE THE EN-SUITE BATHROOM AND KITCHEN DETAIL AND TO USE A CHOSEN DESIGNER TO INSPIRE YOUR SPACE

CONCEPT

I HAVE DESIGNED A SPACES SPECIFICALLY FOR MY CLIENT. I HAVE AIMED TO CREATE A BEAUTIFUL, SOPHISTICATED, MINIMAL CLASSIC-MODERN INTERIOR THAT HAS LOTS OF POPS OF COLOUR FOR THAT FUN QUIRKY ELEMENT. MY SPACE HAS BEEN INSPIRED BY MY CHOSEN INTERIOR DESIGNER, JEREMIAH BRENT, HE LOVES TO USE CLASSICAL SPACES, AND ADDS POPS OF MODERNISM THROUGH COLOURS AND FURNITURE, I HAVE AIMED TO EMBRACE HIS CHARACTERISTICS AND SHOWCASE IT IN MY DESIGN. I HAVE USED BRIGHT COLOURS THAT WON'T DATE QUICKLY, AND A MIXTURE OF MODERN AND PAST DESIGN AESTHETICS.





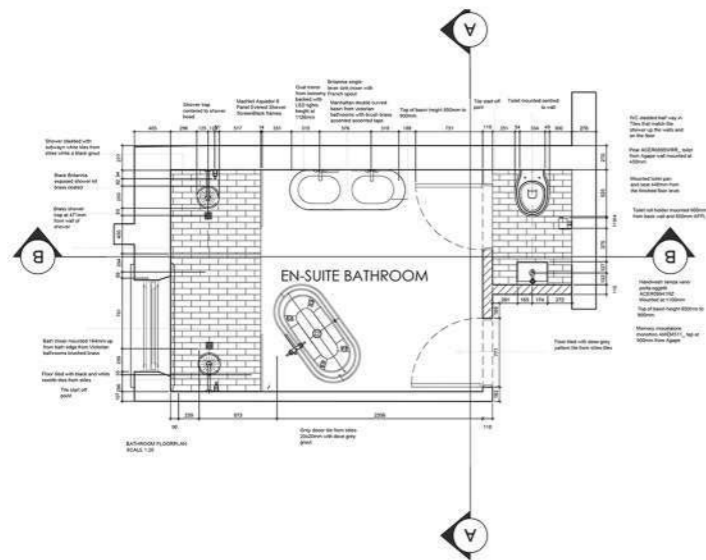
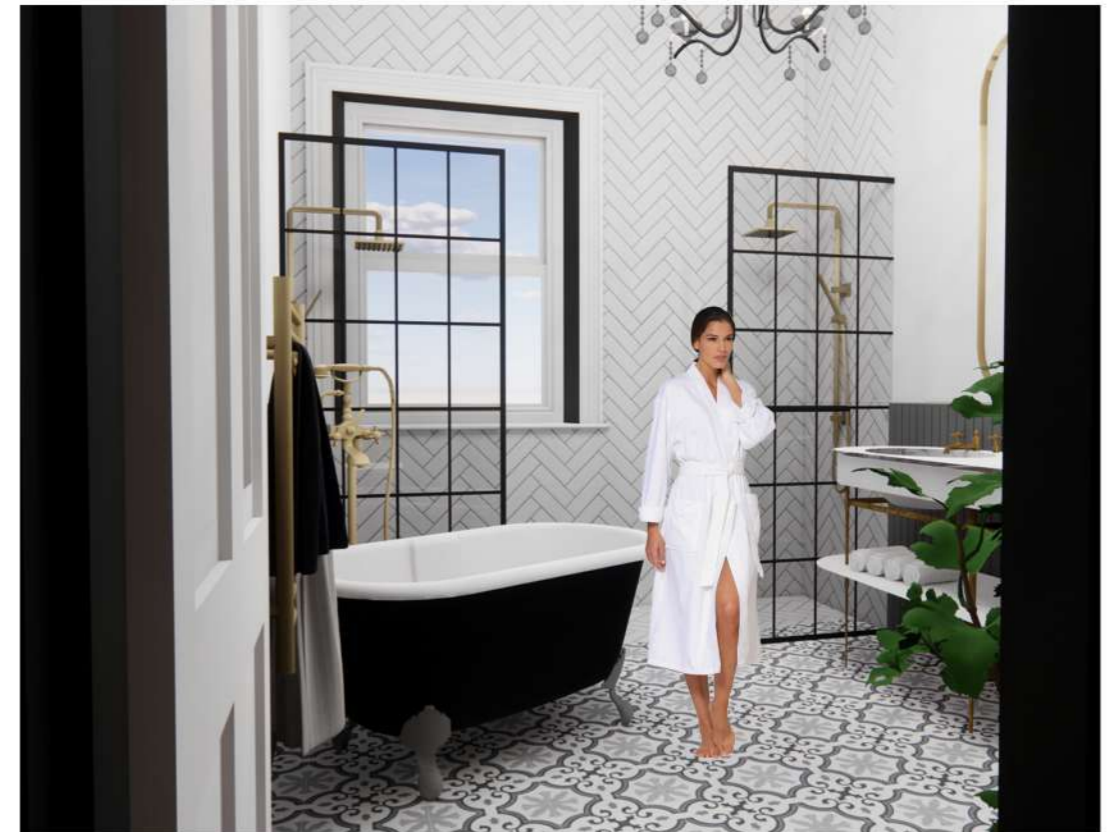
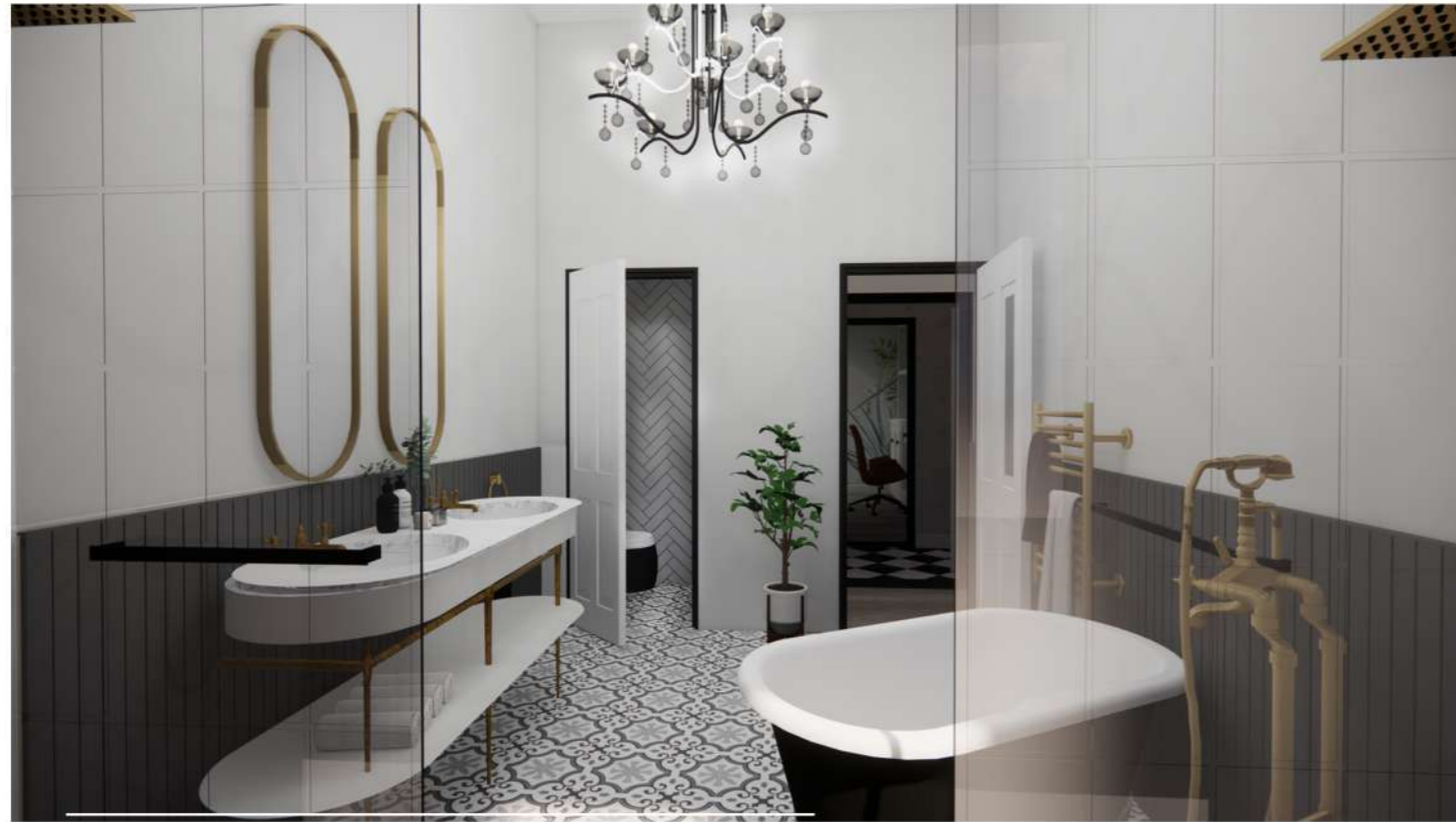
LOUNGE



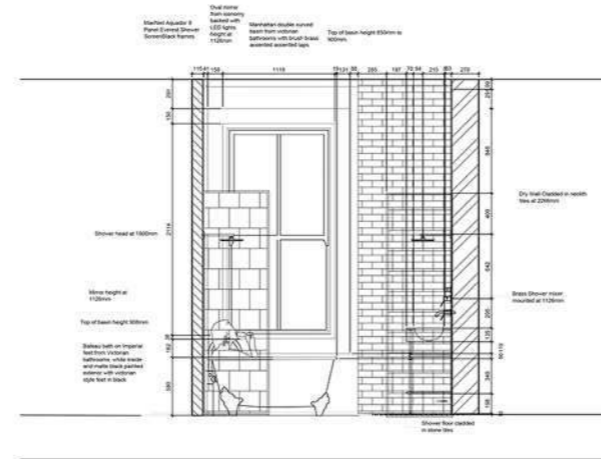
DINING ROOM



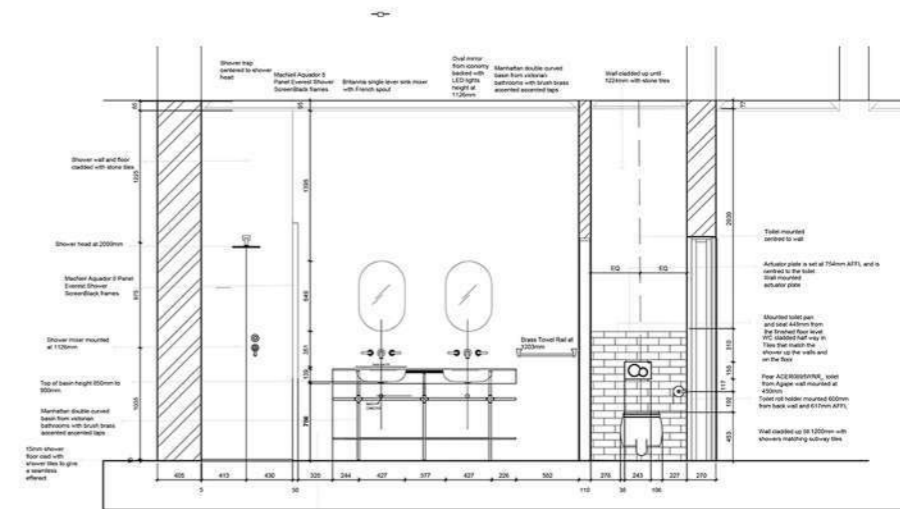
RESIDENTIAL DESIGN BATHROOM TECHNICALS



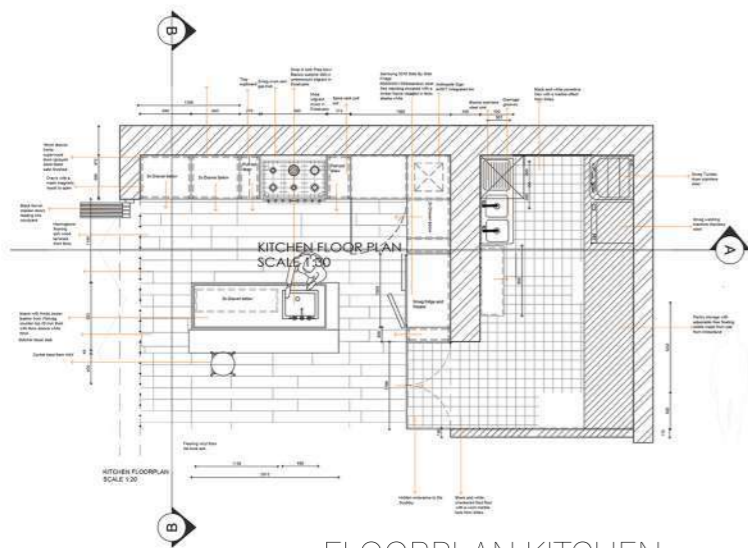
FLOORPLAN EN SUITE



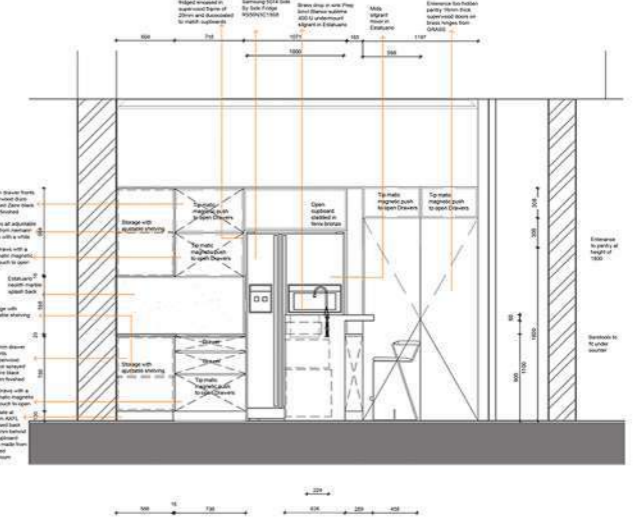
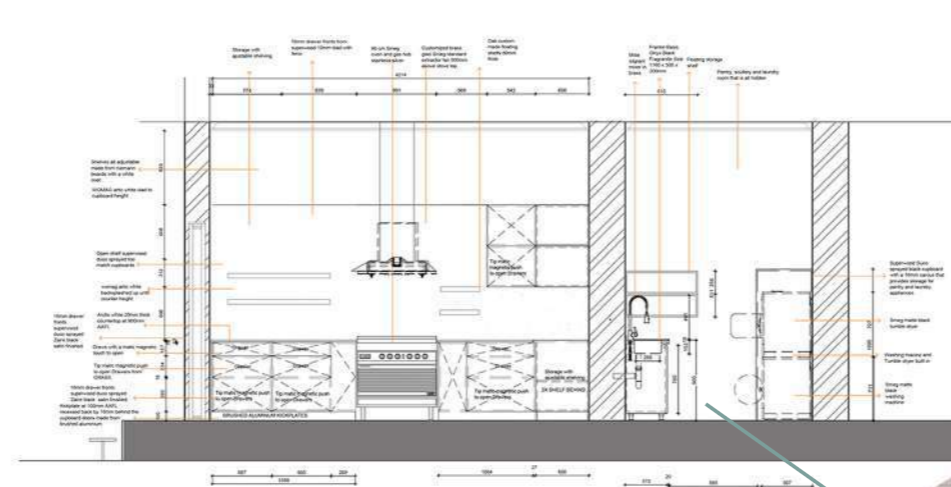
ELEVATION AA



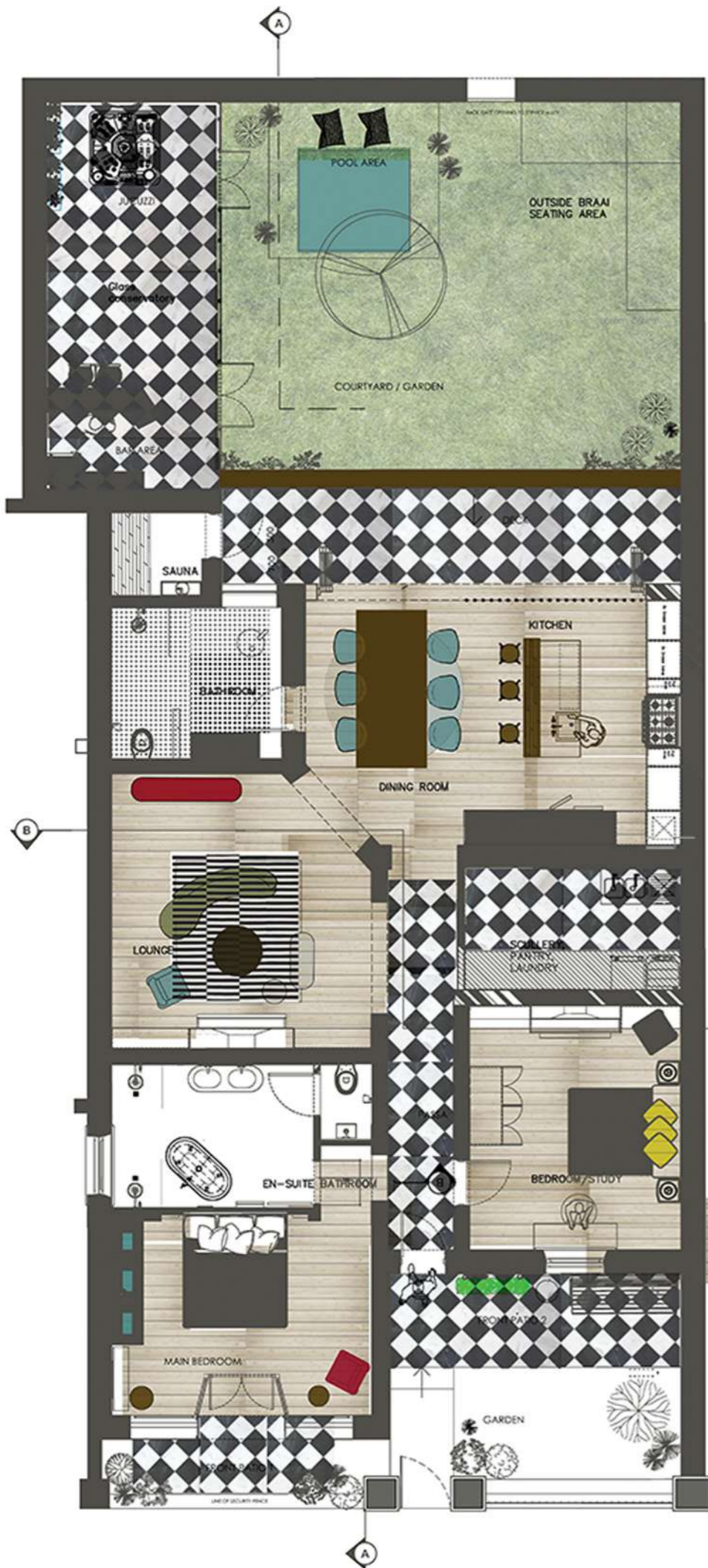
ELEVATION BB



FLOORPLAN KITCHEN



HIDDEN PANTRY PERSPECTIVE



63-65 TRILL ROAD
GROUND FLOORPLAN
SCALE NTS



63-65 TRILL ROAD
ELEVATION AA
SCALE NTS



63-65 TRILL ROAD
ELEVATION BB
SCALE NTS