

POR

TFO

LIO

---

DANIELLE RAAFF

01

URBAN EXPERIENCE 1-9

02

FUTURE FORWARD 10-14

03

JVB MURAL 15-17

04

KSA 18-20

05

LITTLE GIG 21-25

06

DOC HAUS 26-28

07

PHOTOGRAPHY 29-30

08

TEXTILES 31-33

# 01

## URBAN EXPERIENCE

THIS PROJECT WAS GIVEN TO US BY THE ARCHITECT GREG SCOTT, WE WERE TASKED TO DESIGN THE INTERIOR SPACE FOR A HOTEL, WHICH WAS A HOLDING SPACE FOR OVERSEAS CLIENTS. THESE CLIENTS WOULD BE HELD AT THE HOTEL UNTIL TRANSPORTED TO THEIR DESTINATION PODS, WHICH WE ALSO HAD TO DESIGN.

THIS PROJECT TOOK PLACE IN SECOND YEAR.



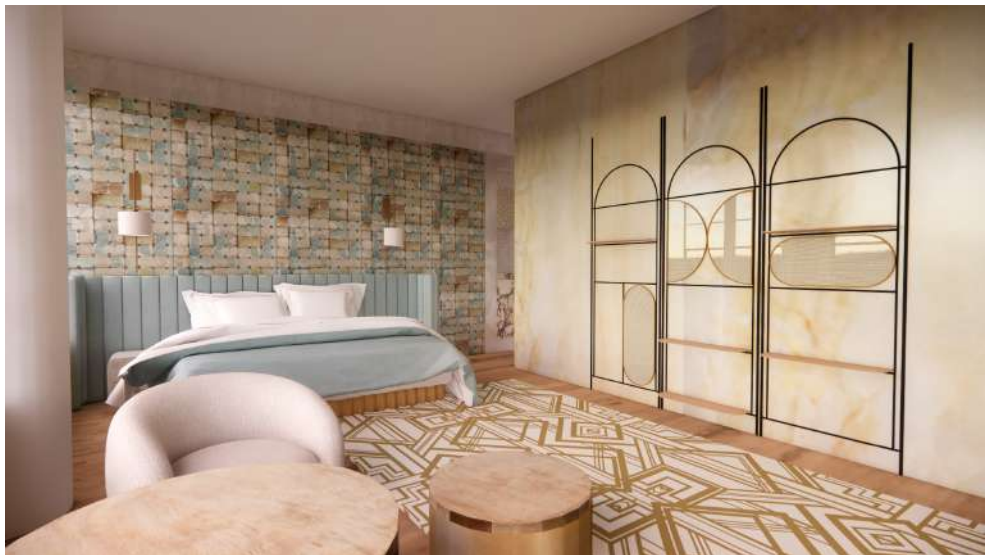
HOTEL - PERSPECTIVES



RECEPTION AREA



BAR AREA

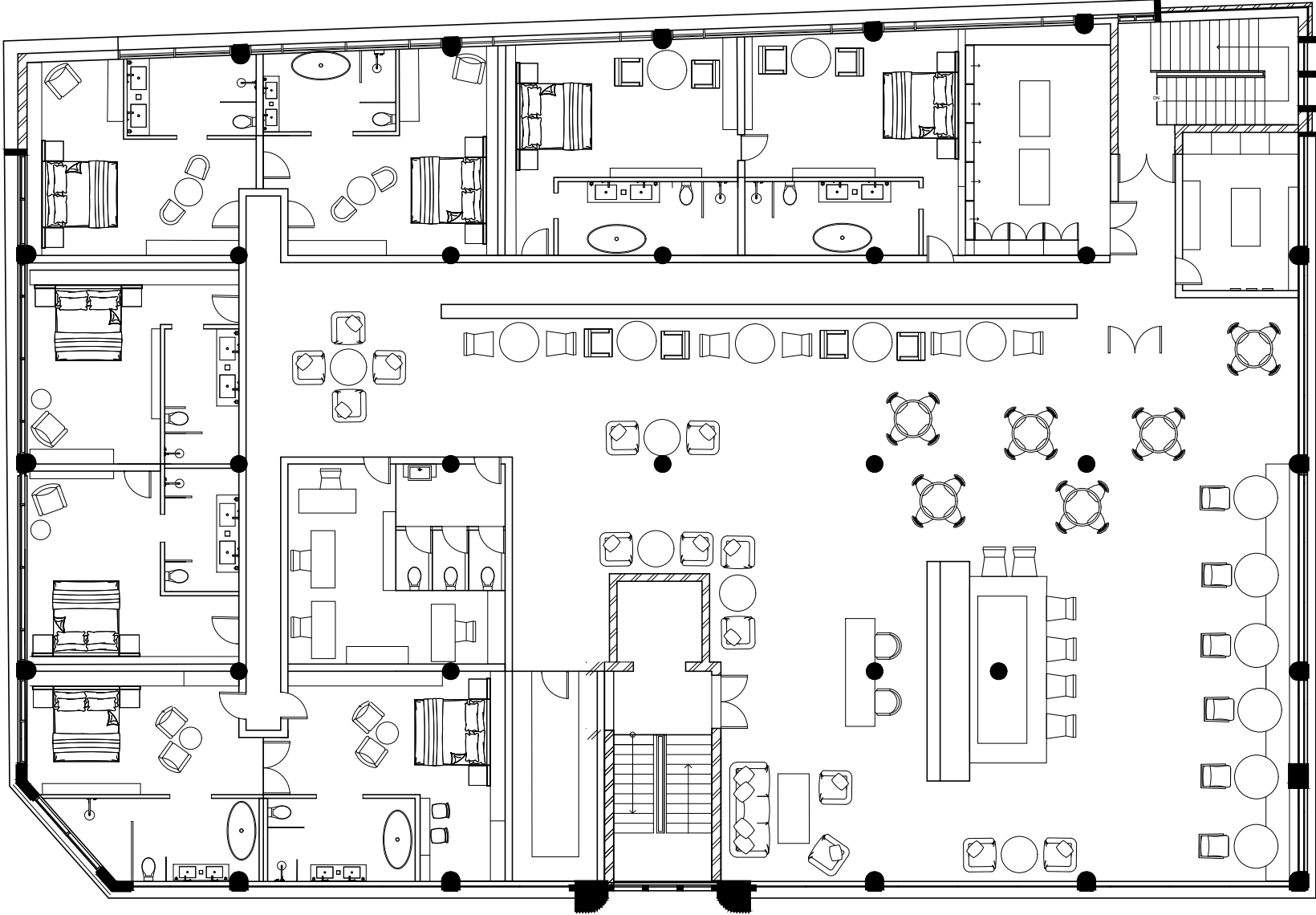


BEDROOM 1



BEDROOM 2

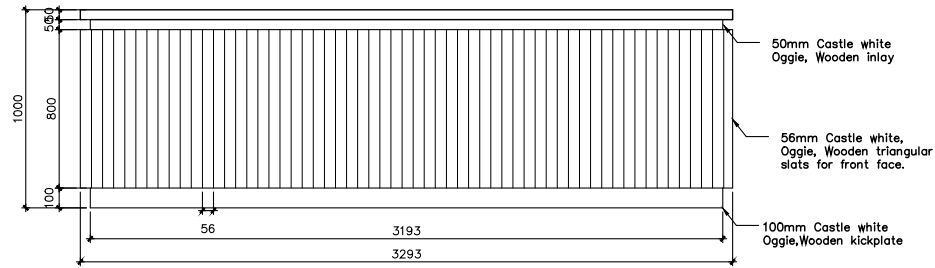
HOTEL - FLOORPLAN



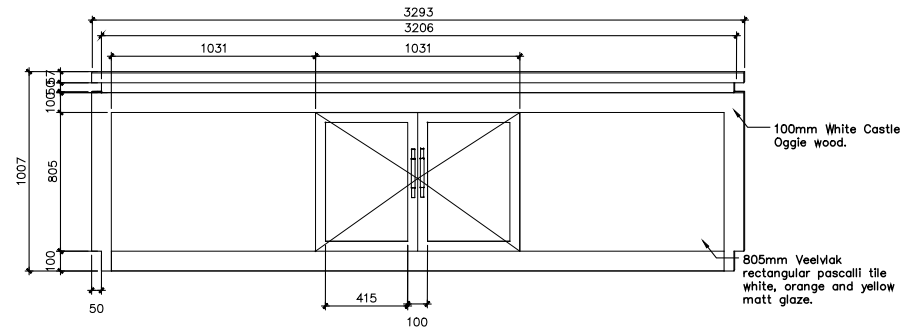
SECOND FLOOR

SCALE nts

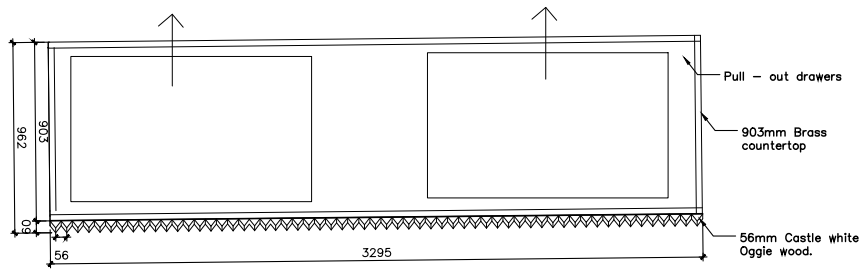
# HOTEL - TECHNICAL (RECEPTION)



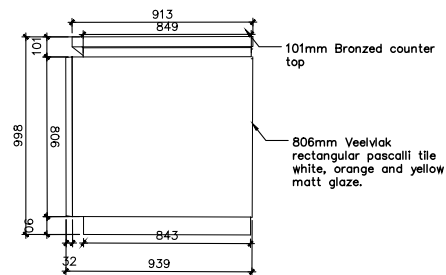
Front Elevation  
SCALE 1:25



Back elevation  
SCALE 1:25



Plan  
SCALE 1:25



Side Elevation  
SCALE 1:25

HOTEL - FURNITURE CLUSTER



RECEPTION



BAR



SEATING



BEDROOM



GUEST BATHROOM



OTHER FINISHES

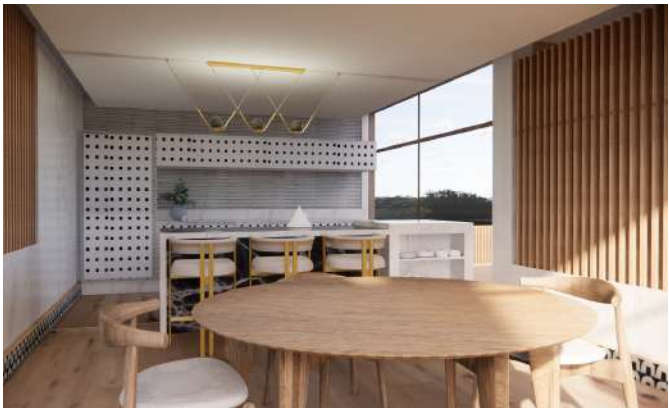
POD - PERSPECTIVES



ELEVATOR / ENTRANCE



LOUNGE AREA



KITCHEN 1



KITCHEN 2



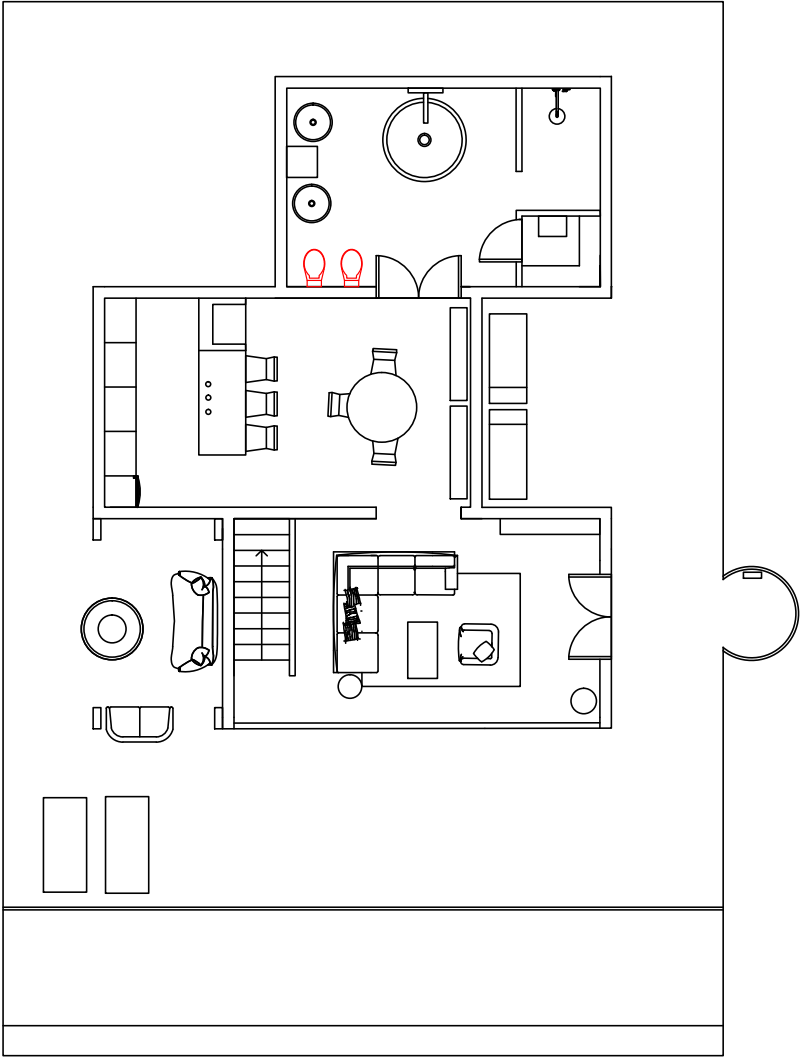
BATHROOM



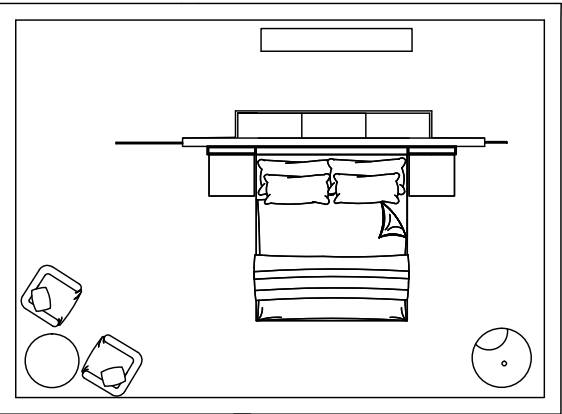
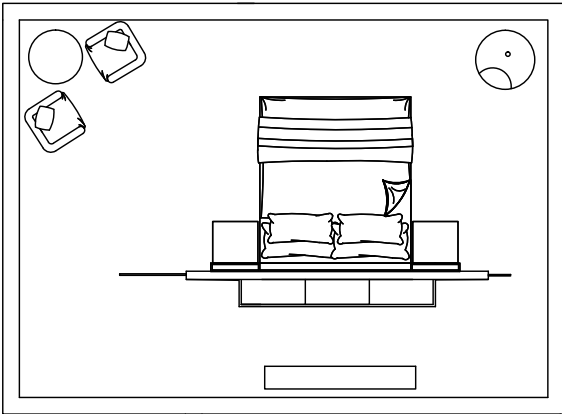
BEDROOM



POD - FLOORPLAN



LEVEL 1



LEVEL 2

**POD - FURNITURE CLUSTER**



**LIVING ROOM**



**KITCHEN**



**BATHROOM**



**BEDROOM**



**OTHER FINISHES**

# POD & HOTEL - MATERIALS BOARD

## KEY FOR MATERIALS :

1. Dandelion - Mavromac
2. Madison - Mavromac
3. Blue crush - Mavromac
4. Diamond tile linen whites - Veelvlak
5. Natural oil timber - Oggie
6. Fluted marbled tile partial glaze - Veelvlak
7. Rectangular 3d white tile matt - Veelvlak
8. Rectangular chunky tile muted - Veelvlak
9. AfricaCULTURE - Kelly Wearstler
10. Cinnamon leather - Hertex
11. Soft shapes - Veelvlak
12. Rectangular pascalli tile - Veelvlak
13. Brass - Pro Metal SA
14. Dots on top - Kelly Wearstler
15. Stone wall - Womag
16. Range - Womag
17. Hand black print - Mavromac
18. Rectangular klompie cream - Veelvlak
19. Coffee stain - Veelvlak
20. Etherial - Studio Masson
21. Rectangular metallic bronze and blue tiles - Veelvlak
22. Ultra Calcatta - Studio Masson
23. Square tile black u-shaped pattern on matt white - Veelvlak
24. Maximum azul - Studio Masson
25. Gold onyx - Studio Masson
26. Teddy bear - Mavromac
27. Antwerp - Mavromac
28. Dune Chevron - Mavromac



# 02

## FUTURE FORWARD

IN THIS PROJECT WE WERE TASKED WITH CREATING A FUTURISTIC TREEHOUSE WITH THE INTENTION OF RELEASING ONE'S INNER-CHILD. OUR TREEHOUSE WAS INSPIRED BY THE JAPANESE 'LESS IS MORE,' AESTHETIC AND TRADITIONS. UKIYO WAS THE NAME OF OUR PROJECT WHICH MEANS 'TO LIVE IN THE MOMENT,' THE FLOATING WORLD.

THIS PROJECT WAS DONE IN FIRST YEAR WITH THE PARTNERSHIP OF A SECOND YEAR.



STRUCTURE - PERSPECTIVES



LOUNGE



OUTDOOR BATHROOM

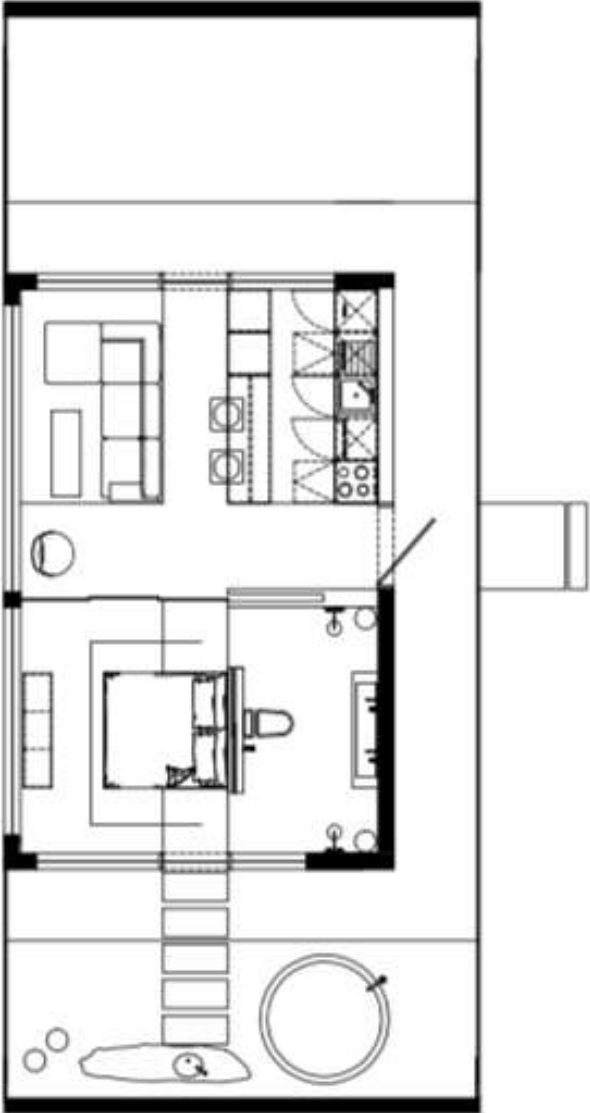


OUTSIDE OF TEAROOM

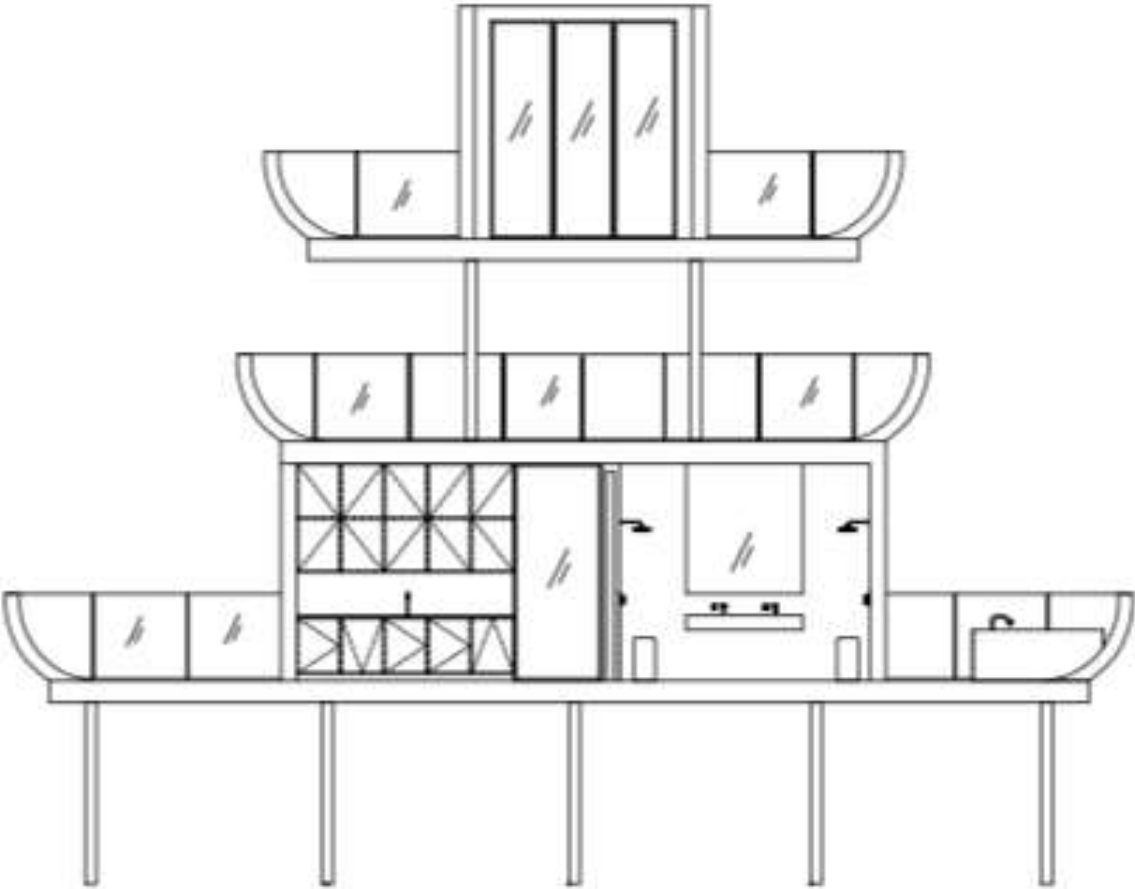


INDOORS OF TEAROOM

STRUCTURE - FLOORPLANS



FLOORPLAN



ELEVATION PLAN

STRUCTURE - **FURNITURE CLUSTER**



**KITCHEN**



**LOUNGE**



**BEDROOM**



**OUTDOOR**

STRUCTURE - MATERIALS BOARD

KEY FOR MATERIALS :

- 1. Maximum dark Marquita - Studio Masson.
- 2. Bonsai - Bonsai organisation.
- 3. Gold screen - emu.
- 4. Wicker - wicker association.
- 5. Natural oil timber - Oggie.





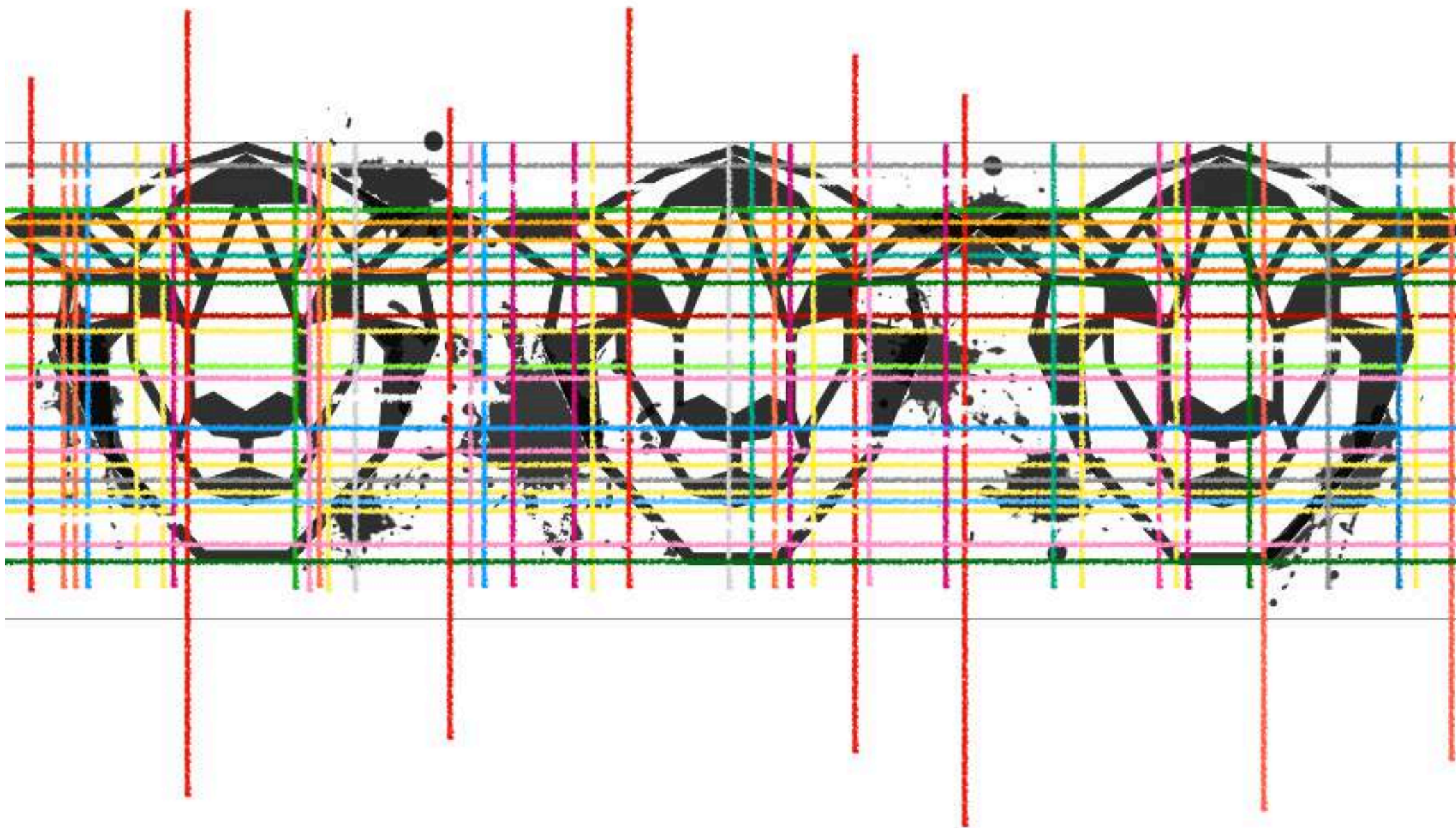
# OS

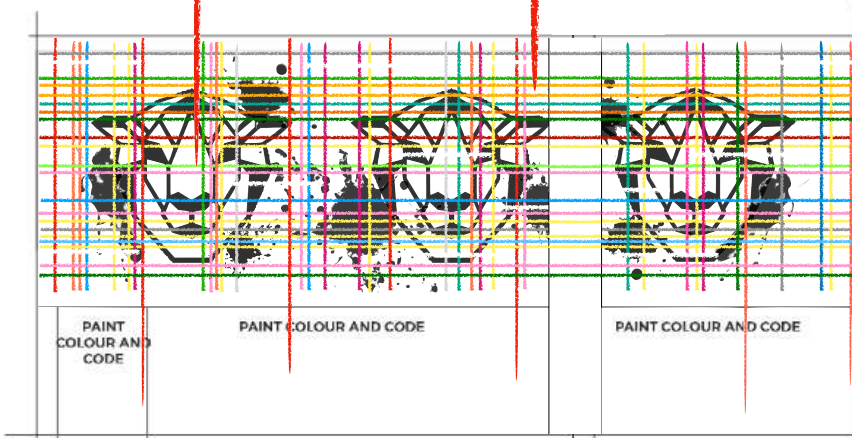
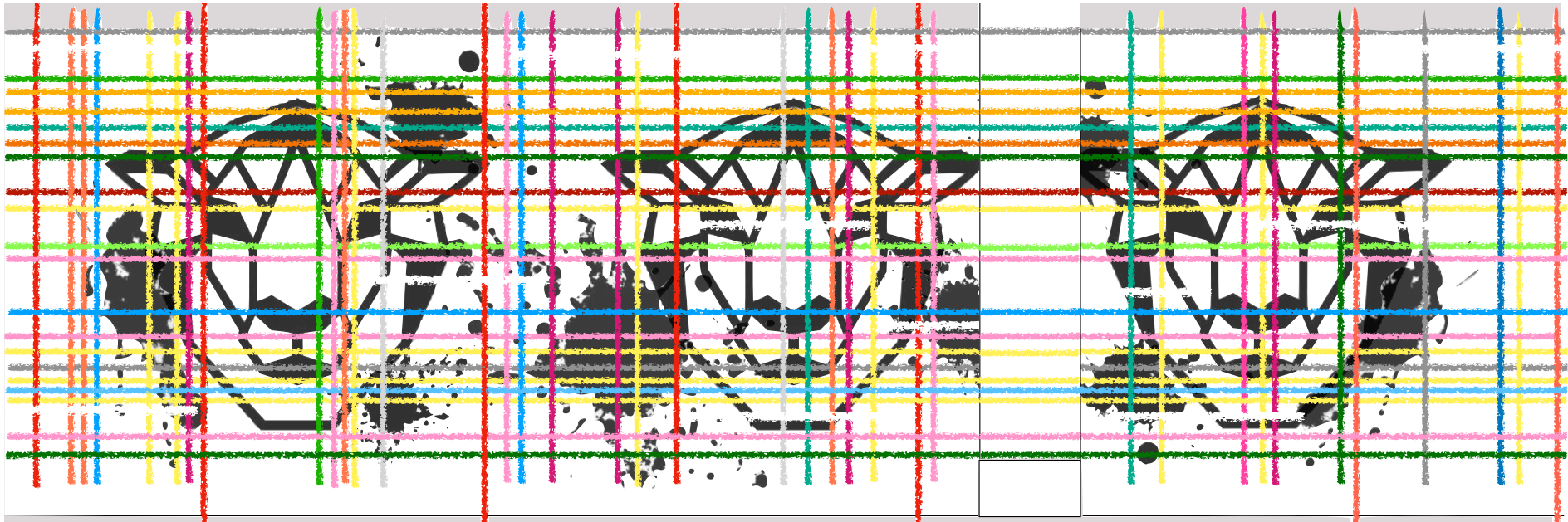
## JVB MURAL

IN THIS PROJECT WE WERE TASKED BY DESIGN TIME ALUM JUSTIN VAN BREDA TO CREATE A LARGE SACLE MURAL FOR HIS UPCOMING SHOWCASE IN SALT RIVER, SHOWCASING LUXARY LOOMED CARPETS. REGARDING DIRECTION HE GAVE US FREE-REIGN BUT DID INSIST ON THERE BEING A SLIGHT AFRICAN INFLUENCE.

THIS WAS DONE IN SECOND YEAR.







DRAWING OF MURAL SCALED ONTO WALL

The Pillar will remain white apart from the multi-colored horizontal stripes which match with the mural.

The walls and door will remain white apart from the small amount of paint strips that extend from the mural.

## WOOL AT PLAY

DANIELLE RAAFF

[danielleraaff@gmail.com](mailto:danielleraaff@gmail.com)

0762586738

The concept for my mural is rather simple. The horizontal and vertical multi-colored lines represents the wide array of colors used in each of the different loomed rugs. The way in which i have placed the lines reinforces the movement in which one creates a loomed rug. The symbolism of the three sheep is to harken back to an older time when one of the ancestors of Justin Van Breda stole three of the twelve prized sheep from a traveler who was on his way to deliver them to the King of England as a gift. The dashes of paint are used to represent the "old becoming the new", meaning that even though the art of the loom is one of society oldest art forms it has found a home in new age design. In the society we live in we are starting to pay homage to older skills that might have been forgotten, and instead of over-looking the earlier crafts of the design society we celebrate where we've come from and where we are headed.

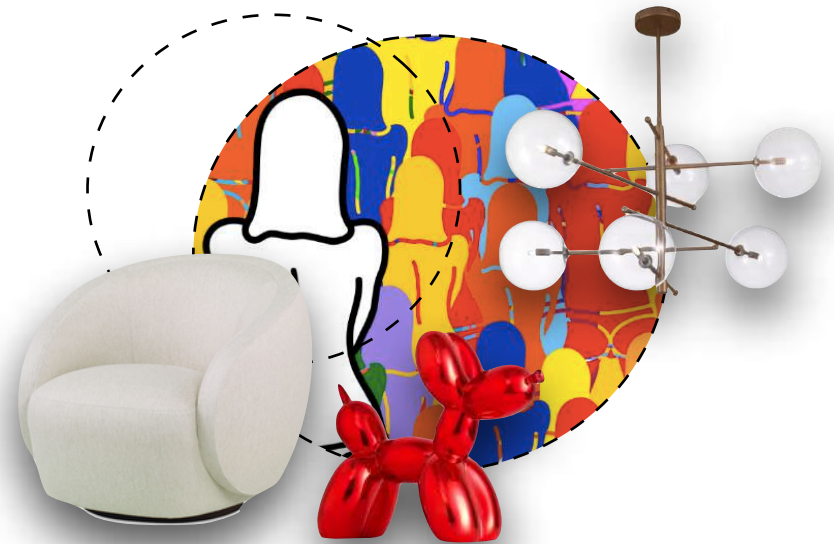


04

## KSA KITCHEN

IN THIS PROJECT WE WERE GIVEN TWO DIFFERENT LAYOUTS OF A KITCHEN. A, WHICH WAS LARGER AND HAD MORE SPACE, WHEREAS B, WAS MORE QUAIN. I CHOSE OPTION B AS I ENJOY THE SIMPLISTIC KITCHEN AESTHETIC. MY INSPIRATION WAS DARK AND MOODY SPACE WITH POPS OF RED TO MAKE THE SPACE MORE VIBRANT. I ALSO CREATED THE KITCHEN AS ONE SEAMLESS SPACE SO THAT IT CONVEYED A MORE MODERN APPROACH.

THIS PROJECT WAS DONE IN SECOND YEAR.



KITCHEN - PERSPECTIVES



ELEVATION PLAN



ELEVATION PLAN



ELEVATION PLAN



ELEVATION PLAN

## KITCHEN - MATERIALS AND FURNITURE CLUSTERS

KEY FOR MATERIALS :

1. Graffiti girls uma - Robin Sprong.
2. Majestic onyx - Studio Masson.
3. metal lux - ESTRO.
4. Sics - BOTERO.
5. Aflex - LIZZY.

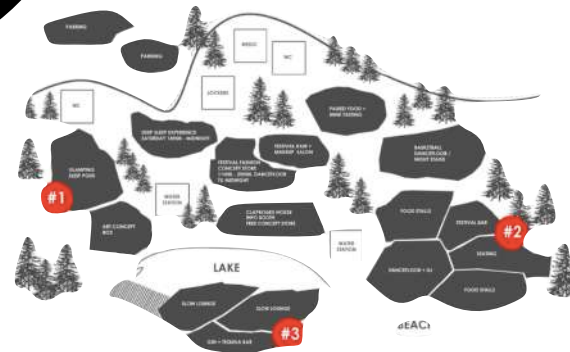


# 05

## LITTLE GIG

IN AND AMONGST THE WONDROUS FARMS LOCATED THROUGHOUT STELLENBOSCH LIES THE ALLURING ATTRACTION OF THE LITTLEBIG FESTIVAL WHICH INVITES ALL TYPES OF CREATIVES TO APPRECIATE A 24 HOUR OUT OF THIS WORLD EXPERIENCE. LITTLEBIG HAS DECIDED TO CREATE A FESTIVAL WHICH CELEBRATES THE COUNTRY OF ITS BIRTH, SOUTH AFRICA, BY INCORPORATING FEATURES SUCH AS ANIMAL STATUES AND REPURPOSED PLASTIC. PAIRED WITH VINTAGE FURNITURE, GREENERY AND LOCAL SA DESIGNERS.

THIS PROJECT WAS DONE AT THE END OF FIRST YEAR.



GLAMPING TENT - PERSPECTIVES



FRONT



ENTRY-WAY



INTERIOR



GLAMPING TENT IN ITS LOCATION



FOODSTAND - PERSPECTIVES



FRONT



ENTRY-WAY



INTERIOR



FOOD STAND IN ITS LOCATION

BEDOUN TENT - PERSPECTIVES



FRONT



CLOSEUP



LOUNGE



SIDE

FESTIVAL - MATERIALS AND FURNITURE CLUSTERS

- KEY FOR MATERIALS :
- 1. Nordic Giraffe floor lamp - AliExpress.
  - 2. Crescent wallpaper - Kelly Wearstler.
  - 3. Maxolta daybed - Appollo.
  - 4. Blue crush - Mavromac.
  - 5. Teddy bear - Mavromac
  - 6. Antwerp - Mavromac.
  - 7. Dune Chevron - Mavromac
  - 8. Graffito - Kelly Wearstler.
  - 9. Ivory gold, Avant - Kelly Wearstler.
  - 10. London lazy chair - Bloc & Chisel.
  - 11. Wooden carved hand chair - Sortana.
  - 12. Smoke chair - Moooi.



# 06

## DOC HAUS

DOC HAUS WAS CREATED AS A LOUNGE SPACE FOR THE ARTISTICALLY INCLINED. THE SPACE WAS TO ALLOW FOR AN INDIVIDUAL TO COMFORTABLY RELAX IN THIS LOUNGE AND BE ABLE TO OBSERVE ART AND DESIGN WITHOUT BEING BOMBARDED WITH CLUTTER. IN OUR SPACE WE WERE INSPIRED BY THE COLOUR SCHEME OF RED, WHITE, HINTS OF GOLD AND BRASS ACCENTS.

THIS PROJECT WAS DONE IN FIRST YEAR WITH A FELLOW STUDENT.



DOC HAUS - PERSPECTIVES



LOUNGE



LOUNGE



ART INSTALLATION



FRONT DESK

DOC HAUS - MATERIALS BAORD, FURNITURE CLUSTERS AND FLOORPLAN

KEY FOR MATERIALS :

- 1. Chestnut - Oggie.
- 2. Black - Styles Tiles.
- 3. White - Styles Tiles.
- 4. Brass - Brass SA association.
- 5. Paddock plaid - Mavromac.
- 6. Horse - MOOOI.
- 7. Piano - Piana association.
- 8. BFF - MOOOI
- 9. Monster chair - MOOOI.
- 10. Disk - Archiproducts.
- 11. Ma Maison - Mavromac.



MATERIAL BOARD



FURNITURE CLUSTER

# 07

## PHOTOGRAPHY

IN THIS PROJECT OUR GUEST LECTURER INGE PRINS, A WELL-KNOWN AFRICAN PHOTOGRAPHER TASKED US TO TRAVEL TO THE SPECTACULAR ELERMAN HOUSE IN BANTRY BAY. THE ASSIGNMENT WAS TO TAKE A CLOSE-UP, EXTERIOR AND INTERIOR PHOTOGRAPH. ALL-IN-ALL WE HAD TO LET OUR PERSONALITY AND UNIQUE NICHE TO SHINE THROUGH.

THIS PROJECT WAS DONE IN SECOND YEAR.





EXTERIOR



CLOSE-UP



INTERIOR

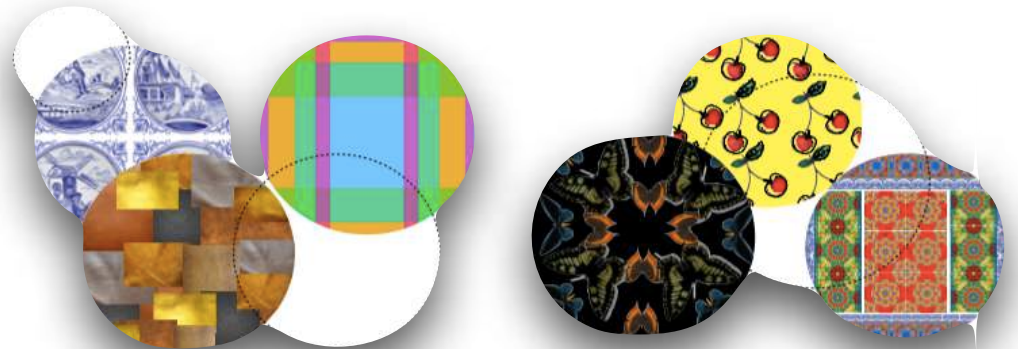




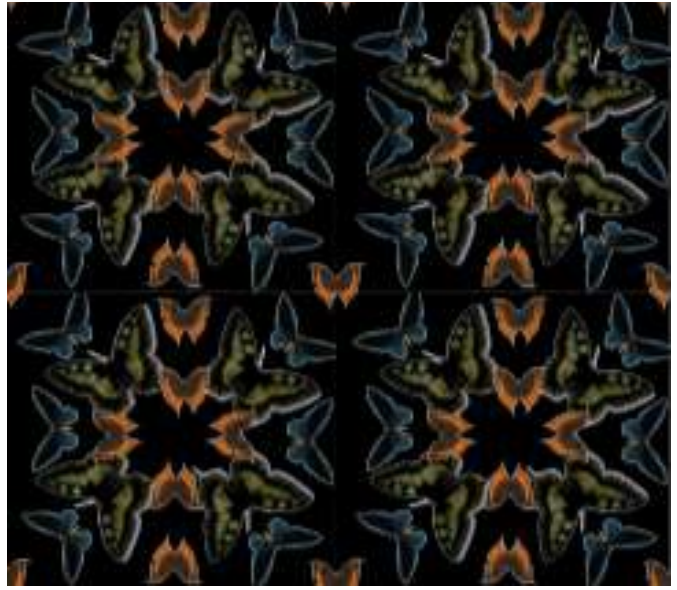
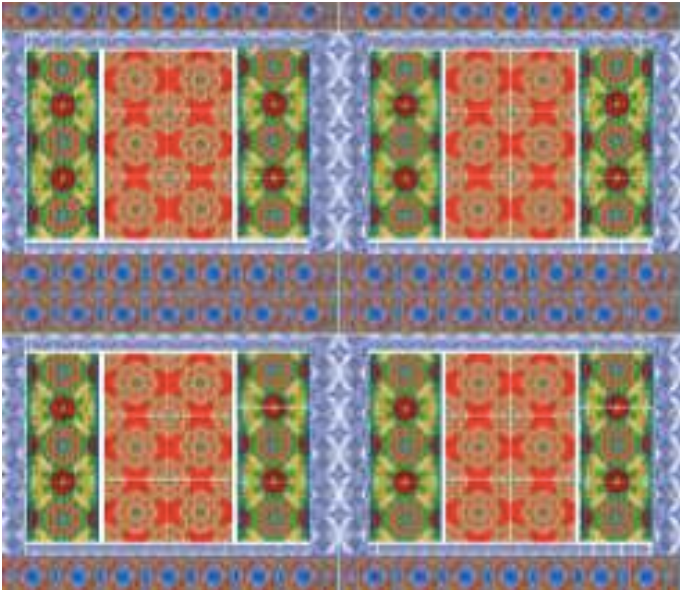
## TEXTILES

IN THIS PROJECT THE OBJECTIVE WAS TO INTERPRET THE BRIEF FOR EACH OF THE SIX TITLES GIVEN, AND TO CREATE YOUR OWN UNIQUE TEXTILES WHIST GIVING OWN FLAIR AND STICKING CLOSELY TO THE FORUM. THE SIX DIFFERENT TOPICS WERE VASTLY DIFFERENT TO THE NEXT... PATTERN BLOCKING, TUTTI FRUITY, GIVE IT WINGS, TARTAN WEAVE, MATERIALS MASH-UP AND DELFT.

THIS PROJECT WAS DONE IN FIRST YEAR.



TEXTILES - SUBMITTED

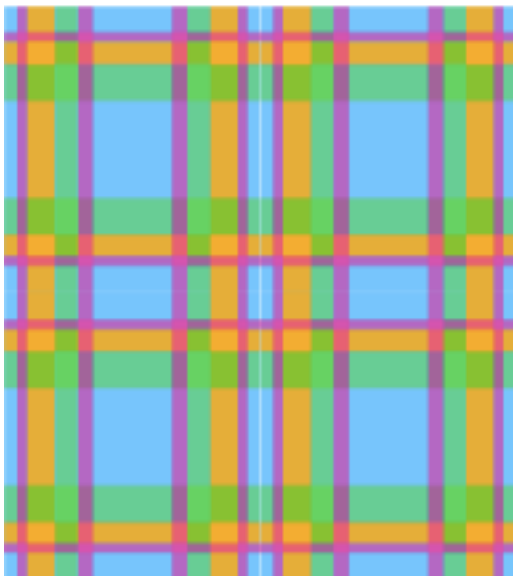
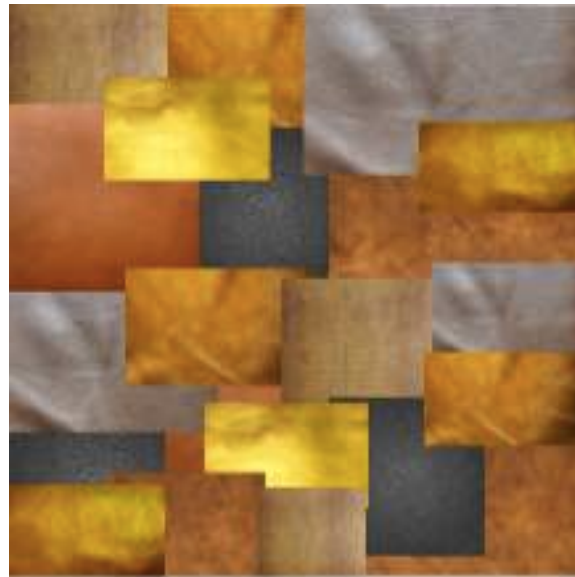
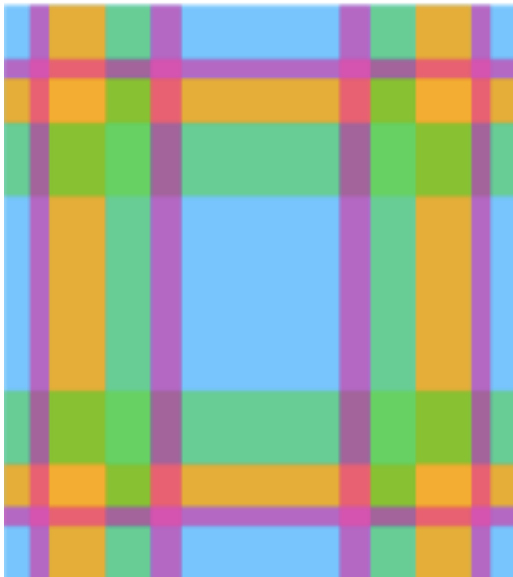


1. PATTERN BLOCKING

2. TUTTI FRUITY

3. GIVE IT WINGS

TEXTILES - SUBMITTED



4. TARTAIN WEAVE

5. MATERIALS MASHUP

6. DELFT

POR

TFO

LIO

---

DANIELLE RAAFF