

VAN ZYL  

---

*interior*



**A**nke van Zyl

I am a young, passionate interior designer who grew up on a farm in the heart of the West Coast. For as long as I can remember, I've had this innate love for renovating spaces, bringing them to life, and infusing them with love. What keeps me going in this field is the incredible feeling of satisfaction when I see a project's final result – something only a designer truly understands. I thrive on creativity, and I absolutely love crafting unique, one-of-a-kind spaces.

IG - [vanzyl\\_interior](#)

Email - [ankevanzyl@gmail.com](mailto:ankevanzyl@gmail.com)

0810191832

“Good design is a language, not a style.”  
- Massimo Vignelli

# Contents

01.

Fernwood  
House Bennett | Knysna  
page 1 - 13

02.

Boxed  
Apartment van Zyl | Cape Town  
page 14 - 22

03.

PG Bison  
Distinct oasis | The Tankwa karoo  
page 23 - 32

04.

Stay Unique  
Clanwilliam cabin | Clanwilliam  
page 33 - 40

05.

Boxwood  
The Globetrotter | Cape Town  
page 41 - 46

06.

Metaverse club  
Atlantis Abyss | Metaverse  
page 47 - 55

07.

Cube developers  
On Q | De Waterkant  
page 56 - 60

08.

Decorex chair  
Chair collection | Cape Town  
page 61 - 64

09.

Acrylic object design  
Puzzle flower vase | Cape Town  
page 65 - 67

10.

Working drawing package  
page 68 - 76

# 01.

## Fernwood

### House Bennett | Knysna

The Bennett family consists of Mark (42), Elzette (42), Joe (10), Neve & Kaye (twins of 7) and Bailey the Beagle.

The erf that the home will be built on is rectangularly shaped, generously sized and with a gentle gradient posing no real building challenges. The highlight of the erf are the views ahead of gentle rolling hills with limited sea views above same. An even more impressive view is when one rotates 45° to the right (north-westward) which brings into view the beautiful Knysna lagoon. It is this lagoon view that the owners cherish and would like to maximise, particularly from the entertainment area(s) and main bedroom, if possible. When standing on the erf and looking ahead to the rolling hills and sea, a home has already been built on the erf to the left (no. 23), which has fortunately been positioned furthest away from our plot, being no. 24. As can be seen from the cadastral, the building line of the erf to the right (no. 25) is fortunately aligned to the right of the erf and therefore also furthest away from our erf. A double story or split-level modern farmhouse / winelands style home of roughly 400 – 450 sqm under roof. Charcoal IBR type roof sheeting is preferred. Outdoor living space with a pool of approximately 15 – 18sqm. Ideally, a generous drive-way to park 4 cars (in addition to 3 x garage parking). Maximum use of solar energy and underground water tanks.





Exterior of the Bennett house. A farmhouse style exterior build. Chromadek in charcoal grey is used for the roof. Burmese beige paint for the walls and desert sandstone cladding from Artmar for exterior cladding. Fynbos fauna landscaping.



Master bedroom perspectives. Decorated with farm style decor, lighting and furniture. The sage green panelling behind the bed and the stone clad fireplace adds to the aesthetic of the style. A few planters, rugs and photo frames gives the space a serene mood.





---

Master bathroom perspectives. The bathroom has a white interior that gives a clean and fresh look to the space.



Master bathroom



---

Kids bedroom. The room has a country feel featuring a geometric wallpaper from Hertex and charcoal paneling to add a layer of decor. Light timber and warm colours were used.



Kids bathroom



Kitchen. The design has a farmhouse style decorated with pendants, LED lighting and beautiful Smeg appliances. The cabinets is a light grey from PG Bison in the colour Folkstone grey with the counter tops in Blanco pewter from Eezi quartz.



Entertainment area. This area has a open floor plan that connects the lounge and dining with the kitchen while still being separate and keeps a cohesive feeling.



Entertainment areas. The patio, braai with bar counter and lounge



Back view of patio & pool area





---

Fernwood materials board

# 02.

## Boxed

### Apartment van Zyl | Cape Town

Choose a site in the Cape Town City bowl. You can choose from the following: Bo Kaap, Cape Town Central, De Waterkant, Devils Peak, Foreshore, Gardens, Higgovale, Kloof Nek, Oranjezicht, Salt River, Tamboerskloof, University Estate, V&A Waterfront, Vredehoek, Walmer Estate, Woodstock or Zonnebloem. You have the option to position your building between two existing buildings or you can demolish an existing structure to make space for your building on a specific site. The property is characterized by its elongated and narrow shape, with its entrance located at the shorter end

yourself living alone / with family / friends / a partner. The structure : The internal dimensions of the rectangular space are 4500 mm x 11000 mm. The space consists of a ground floor, first floor, second floor, and a rooftop garden. Depending on the chosen site, the building can be connected to another building on both sides or at least on one side. Access to the building is only available from the front, but you have the option to include a small courtyard space at the back. However, you are free to manipulate, rework, or completely redesign the structure to match the interior style, as long as you remain within the given parameters. Additionally, you are allowed to create openings in the building to incorporate windows, balconies, skylights, and doors.





Lounge & Kitchen. These spaces has a white interior with elements of minimalism like concrete, timber, marble and brass.



Second floor  
An open closet, en-suite with a balcony and a big modern bedroom with a fireplace and comfortable seating.

Rooftop  
A fire pit with comfortable seating and a film projector with a mini bar surrounded by bougainvilleas and lavenders.

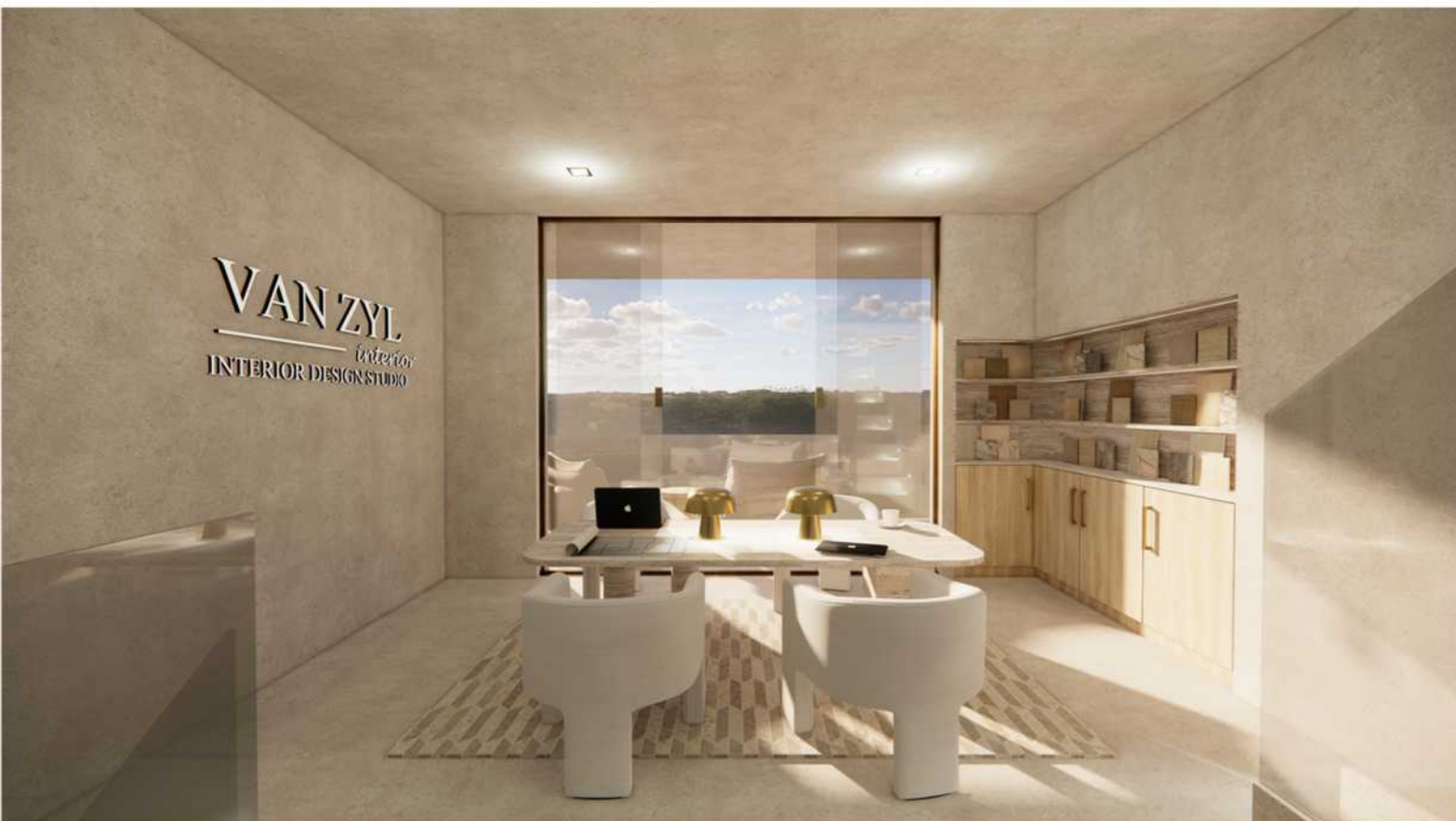
First floor  
An at home interior design studio with a coffee station, a separate office and a balcony.

Ground floor  
Upon entry you have the lounge, leading you into the kitchen and courtyard.

Section view of all levels of the house



Main office



Interior design studio & Kitchenette with coffee station. These areas are designed to accommodate a small team of designers and the equipment needed.



Bedroom, walk in closet & en-suite.





Rooftop mini bar, film projector & outdoor fire pit. This space was designed to entertain friends and family. The space is surrounded by a colourful landscape which contrasts the crisp white upholsterd furniture.



# 03.

## PG Bison

### Distinct oasis | Tankwa karoo padstal

You must design your client's dream desert oasis consisting of a luxury residence, with entertainment areas and landscape surrounds. Your design proposal must celebrate the basic human needs of: eating, sleeping, bathing and socializing. Your client wants every aspect and feature of your design solution, including the landscaping, to be photogenic, i.e. instagrammable. It's all about the experience! And how you share that experience with your followers. You need to wow your client with a solution for multiple spaces that forms a cohesive whole yet works as distinct and separate areas too. This is an important practicality for your client as she needs to be able to offer her potential clients the opportunity to maximise their time and investment with a variety of settings for filming and photographic shoots, all in one location. Consider how your solution lends itself to visually interesting spaces for a multitude of content creating opportunities. While the three elements of fire, earth, and air identify easily with the surrounding dry landscape, your client's requirement is to create something unique by highlighting the fourth element of water. My take on the brief : The outdoor curved structure covers the elements of water, earth, fire and wind, is an architectural masterpiece that is designed to provide a shelter against the harsh elements of nature. Water plays a central role in the design of the structure. With a water harvester that runs on top across the curved walls of the structure. Water will be harvested through condensation. The water will collect throughout the day in the warm weather and will create a drinking pond at the bottom of the structure for the wild animals. Fire is represented through fireplaces and fire pits, providing warmth and adding to the cozy ambiance of the space. Wind is incorporated through the use of strategically placed vents throughout the structure. Earth is also prominently featured, with the use of natural materials all around the structure.





---

Exterior view of the oasis.  
The swimming pool is a salt-water pool to limit evaporation in the harsh karoo sun.



Kitchen & Bar. The interior of the kitchen and bar have accents of steel. On the right of the kitchen is a waterfall that represent the element of water. The rest of the kitchen's interiors are materials like concrete, glass and stone in curved shapes.



Kitchen & dining



---

Underground disco & Arts and crafts room. Both of these spaces are circular. The circular shape represents the contrast this building has with the nature surrounded by it.





Lounge, fire place, cinema, stargazing area & spa. All of these rooms are designed around one concept- serenity. The lounge has wall to wall carpeting where guests are encouraged to feel grounded by sitting on the floor comfortably. The cinema is a dual purpose space, where people can have a space to edit and work on projects but also wind down and watch a movie. The star gazing area will mostly be utilized in the evening and has a pyjama lounge. The spa has a skylight to maximise sunlight and is surrounded by shallow water patches.



Master bedroom



Master en-suite & lounge. The bathroom has an ultra modern design where the whole structure is made of stainless steel moulded into curved shapes. The curved shapes go hand in hand with contrasting the surrounding landscape. A fireplace and outdoor swings are placed just off the lounge to allow guests to take in the desert views.



---

PG Bison's materials board

# 04.

## Stay unique

### Clanwilliam cabin | Clanwilliam

Design Time students have been given an exciting opportunity to create unique and innovative cabin designs for Stay Unique. The company plans to build up to six cabins in 2023, each situated in distinct and picturesque locations within a 2.5-hour radius of Cape Town in the Western Cape. As the company looks to expand into other provinces beyond the Western Cape in 2024, they are seeking inspiration for its next four cabins. Stay Unique is currently building two cabins and eagerly anticipates the innovative designs that the Design Time group or groups can offer. Moreover, the selected designs

ished product when it is ready for guests. Stay Unique will provide professional photography of the cabins inspired by the students, along with content from notable influencers in eco, adventure, and travel categories. This content can be used by the students in their portfolios, which will be advantageous for their future careers. This opportunity is an excellent chance for Design Time students to showcase their creativity and gain valuable exposure in the industry.





Exterior & patio



Interiors of the cabin in respect to the outside area





---

Close up of kitchen and bedroom. The kitchen has a lot of storage space with shelves on the left. The cabinets are in Brookhill from PG Bison. The bedroom has panelling that gives the area a decorative layer.



Overview of bedroom, lounge & outdoor seating.



Side view of the exterior of the cabin. The bathroom has two doors opening to outside bath.



---

Stay unique materials board

# 05.

## Boxwood

### The globetrotter | Cape Town

Run a competition with Design Time students whereby they put together a design scope for the city block fronting Strand, Loop, and Bree Street. Think residential conversion, new offices, campus, hotel, hostel etc – the world is your oyster. Main objective – be creative/quirky/different and to not play it safe. Things to think about : the greater CBD - What does it need? Who lives there? Who is the target market? Parking requirements (5 floors of parking will be added). Heritage requirements – bergastan façade structure remain as is (but can be painted) What to include : Concept – and why you choose it. Concept name of building and a reason for it. Façade design (exterior design). Matrix entrance lobby design and concept floor.





Rooftop pool & seating



---

Close up perspectives of bar and booth seating





Rooftop bar and seating



Top view of rooftop bar, pool, seating & garden

# 06.

## Metaverse club

### Atlantis Abyss | Metaverse

Students will collaborate in groups to design a virtual adult nightclub within the metaverse using AI generated imagery. This project challenges students to fuse traditional interior design principles with new age technology. Virtual Space Mastery: Gain insight into designing an immersive metaverse environment, considering user experiences and sensational aesthetics. Innovative Concepts: develop original nightclubs theme and spaces that push creative boundaries. Adapt Traditional Principles: apply interior design fundamentals such as ergo-

teamwork and communication while brainstorming and executing your projects. Presentation Skills: learn to articulate concepts and final design effectively through succinct presentation boards. Project phases : Research and Concept: explore metaverse design, propose look and feel and define your target clientele. Design Development: compile layout plans using Autocad and build virtual club spaces using 3D modelling software, ensuring theme consistency. You can use a combination of Sketchup and AI generated imagery from your renders for your final presentation. Presentation: communicate design rationale, AI integra-

nightclub and out of this world concepts. Seamless graphic AI integration for immersive designs. Attention to detail in layout, lighting, furnishings and materiality. User-centred approach for an engaging experience. Effective teamwork and presentation skills. Adherence to deadlines and project brief. This project equips students with metaverse design skills, AI integration exploration, and collaborative aptitude, preparing you for the future of interior design. Minimum design requirements : Brand your club cleverly and choose appropriate typography. Reception/hostess/welcoming/waiting area. Unisex bathroom(s). Multi level bar experience(s). Slow lounge(s). My take on the brief : Welcome to Atlantis abyss where reality fades and adventure begins. Step into a world where the mythical meets the modern, where the lost city of Atlantis is reborn as a pulsating nightclub and an immersive escape room. Experience the thrill of solving intricate puzzles and uncovering the secrets of Atlantis as you navigate through hidden chambers and artefacts. Collaborate with fellow explorers, forging bonds. But the journey does not stop there. As mysteries are unravelled, the nightclub's energy ignites. Dance between ancient ruins, swept away by the music's rhythm and the magic of a city brought back to life. The Atlantis Abyss awaits. Dare to venture?





Poseidon's laundromat. Upon entering the building you will be greeted by colourful interiors. Once inside you can create your avatar. You then are able to access the reception of the night club through the washing machine.



Reception & Zeus' chambers (bathroom). The reception is a circular room with Roman pillars ruins. The bathroom is situated in the clouds. The furniture used is modern and unique. Basins are in the form of crying statues



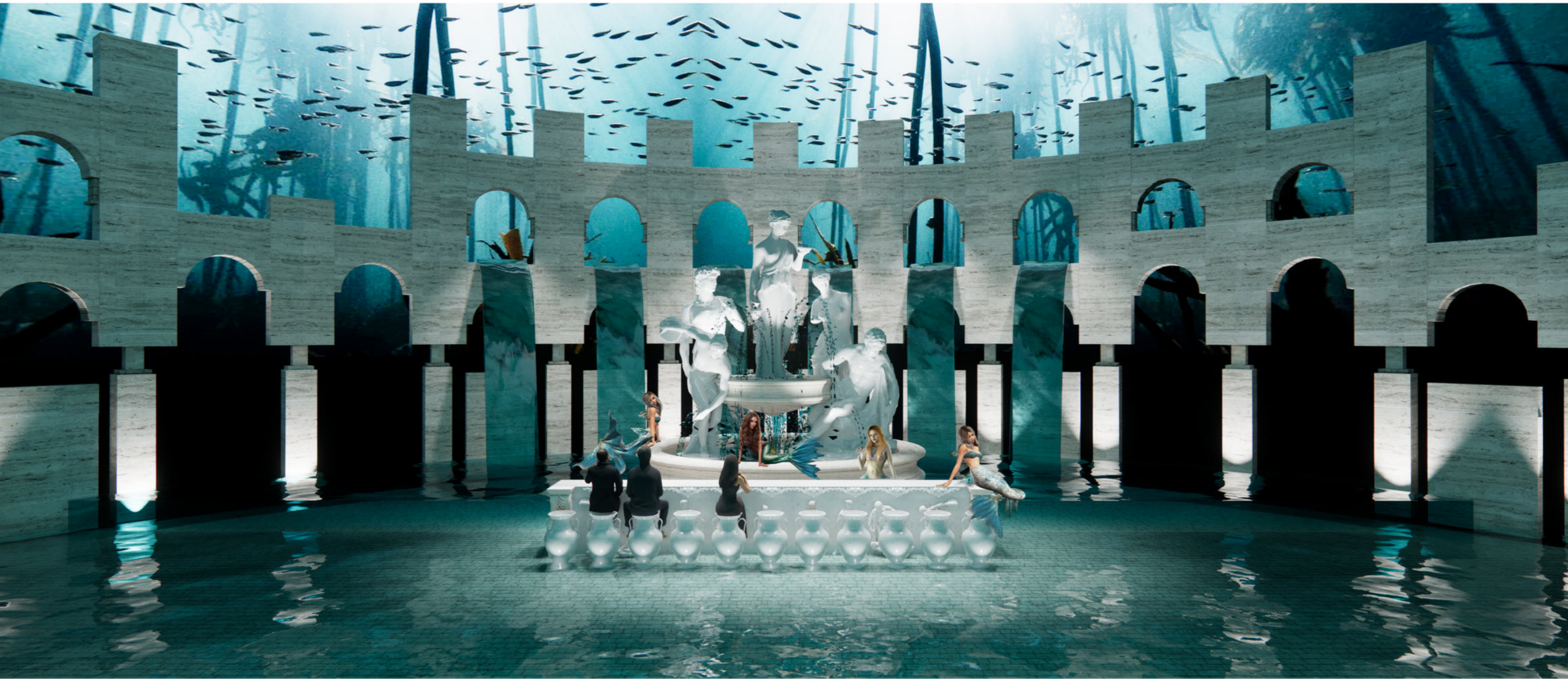
Apollo's temple bar. The bar counter is a fish tank. The drinks are displayed on the pillars. The jellyfishes are the waiters and will be serving the customers.



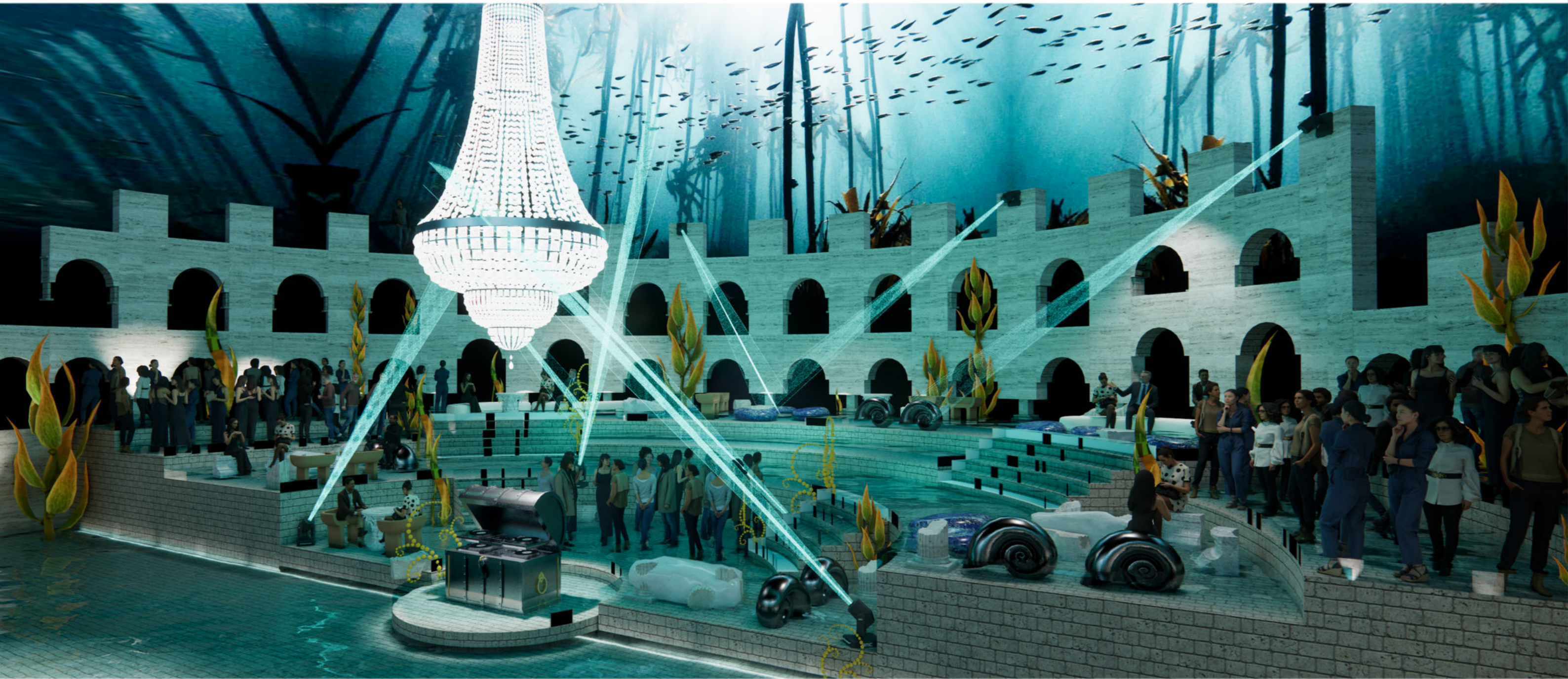
---

Apollo's dance floor & slow lounge. The dance floor is a circular stage with ancient Greek statues. The slow lounge is arched architecture with hanging curtains that represents ancient Greek clothing that will be used as seating.





Triton's teatro bar - where mermaids are the servers, serving drinks from an alcohol fountain.



Triton's teatro slow lounge & dance floors. The dance floor is a theatre with seating and dancing being separated by different levels. The DJ booth is a treasure chest.



---

Atlantis abyss materials board

# 07.

## Cube developers

### On Q | De Waterkant

On Q. cube's 12th development, is situated on the localized streets of De Waterkant CUBE Developers are looking for 3 beautifully designed and curated show apartments' in order for clients to select their chosen model for purchase. Your task is to design one of three 'show apartments'. Research the following interior design aesthetics and select one style. This aesthetic will govern your interior scheme broadly and must be carefully considered when designing your kitchen, bathroom, and cabinetry detail. Styles to choose from: classical, contemporary or minimalist. project requirements : An open plan living / dining / kitchen area, 1 x main bedroom, 1 x bathroom, BIC. Limitations : You have the freedom to design the layout of the internal space, bearing in mind your

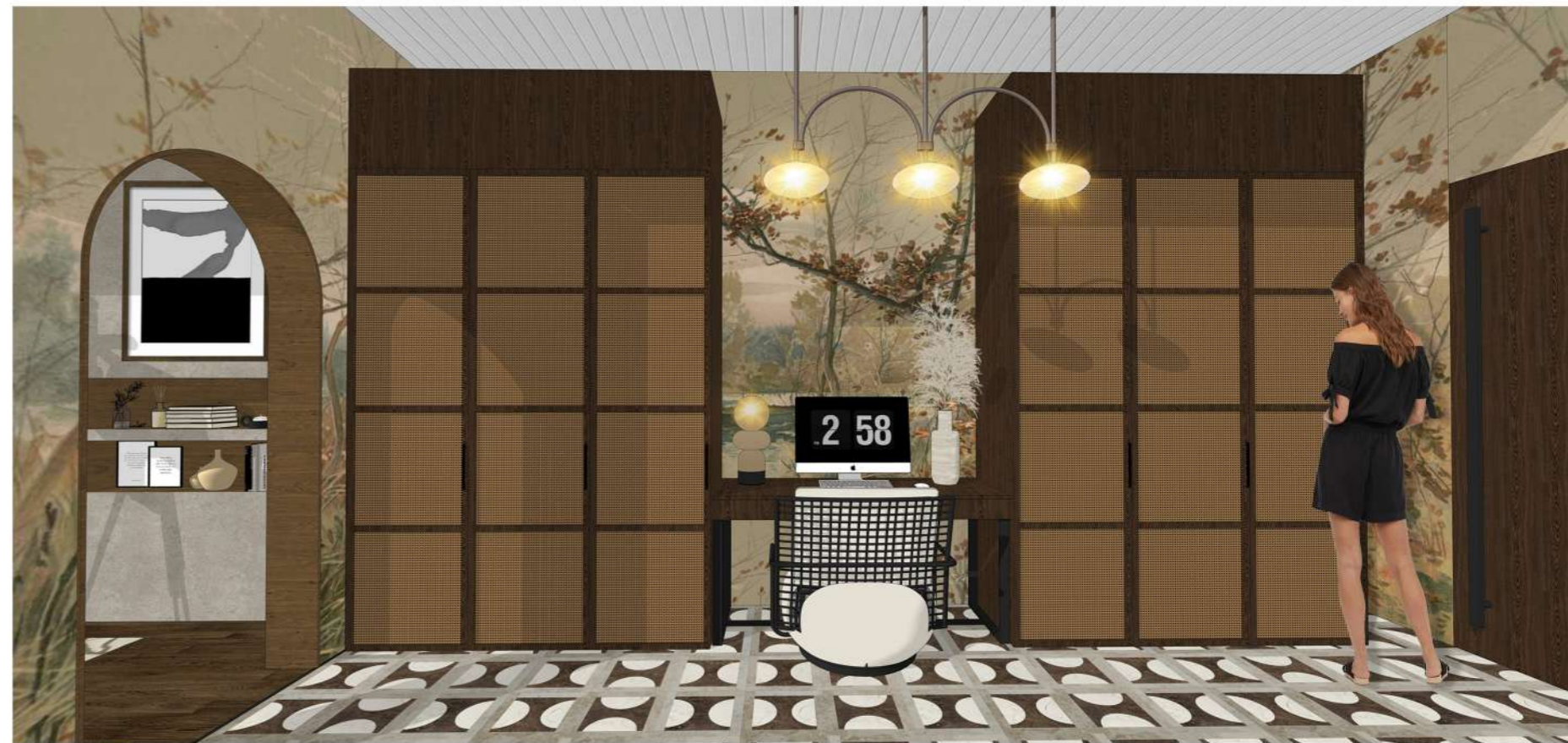
free to change the location of your front door, anywhere along its existing wall.





---

Lounge with fireplace.



Bedroom and hallway with study and extra storage.



---

Bathroom & kitchen



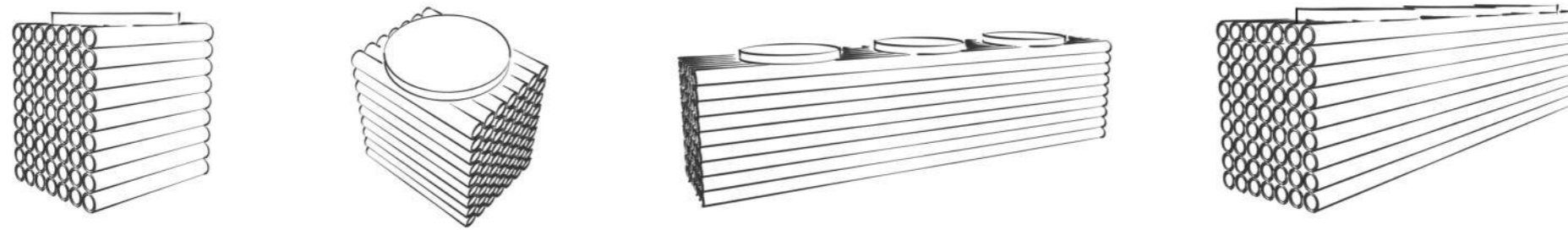
# 08.

## Decorex chair

### Chair collections | Cape Town

We are excited to challenge you to create a signature chair that incorporates the 5 R's (reduce, reuse, recycle, repurpose, and refuse) in your design process. This is an opportunity for you to showcase your commitment to promoting sustainable design while creating beautiful and economically viable solutions. We will then showcase these chairs at a restaurant seating area at Decorex in Cape Town and Johannesburg. This is a unique opportunity to showcase your design skills, promote your commitment to sustainability, and gain exposure through media coverage and promotion on the Decorex platforms. We look forward to receiving your submissions and selecting the winning chair design for this exciting project. Design requirements : The chair must be made primarily from waste materials, such as recycled plastics, reclaimed wood, upcycled textiles, or other repurposed waste materials. The use of eco-friendly production techniques and processes is encouraged. The chair must be fully functional and suitable for use as seating in a restaurant area. It should provide comfort, stability, and durability, and be able to withstand regular use by restaurant patrons. The chair should have an attractive and innovative design that showcases the creative use of waste materials. It should be visually appealing and complement the overall aesthetic of a restaurant space. The chair should demonstrate a commitment to sustainable design principles, such as reducing waste, promoting recycling, and minimizing the environmental impact of production processes. The use of non-toxic materials and finishes is encouraged.

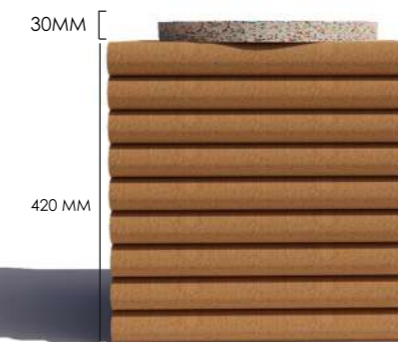




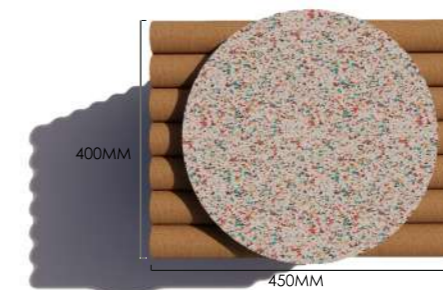
SINGLE SEAT



3D Axo



Elevation

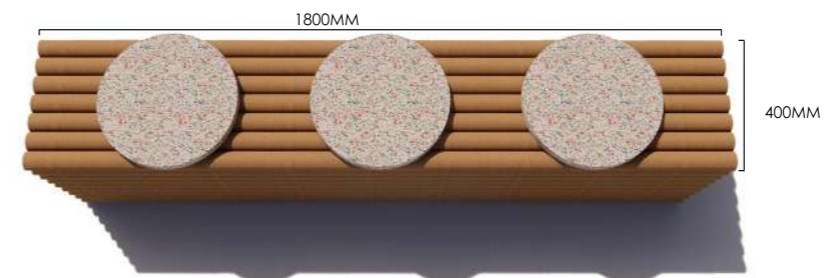


Plan



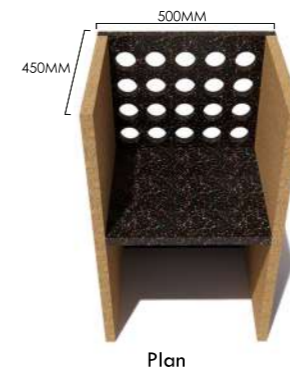
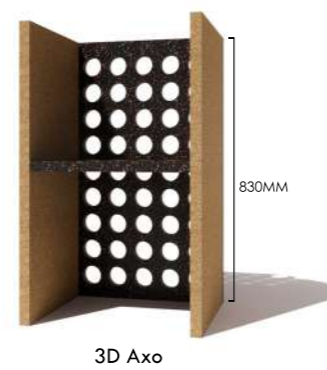
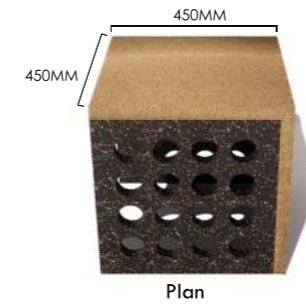
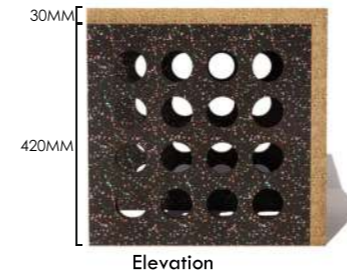
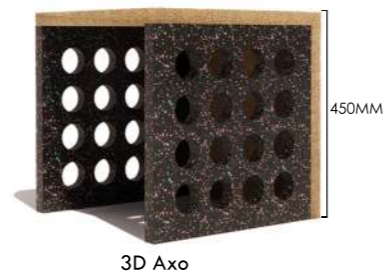
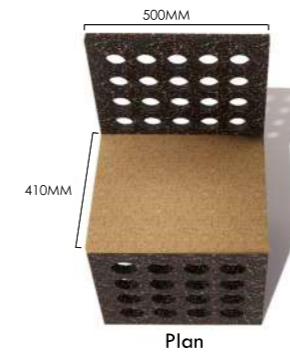
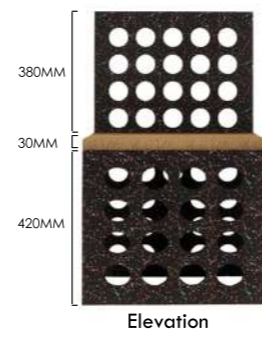
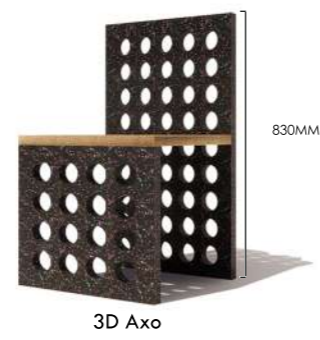
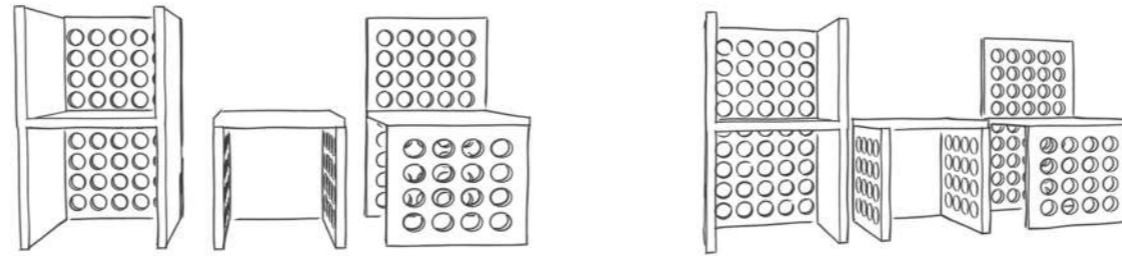
3D Axo

BENCH



Plan

The fluted postal chair collection | I designed this chair as a way to utilise paper waste. The fluted postal chair is made from recycled paper rolls traditionally used to transport art and other paper items via the postal services. The seat cushion is made up of melted and compressed rubber offcuts. The paper rolls are glued together with eco friendly glue making this the perfect way to give a new life to these disregarded materials.



Connect for nature collection | For this chair collection I wanted a wide range of chairs that is made of recycled plastic and cork. This collection has a modern and sophisticated look, while still being eco friendly- and sustainable.

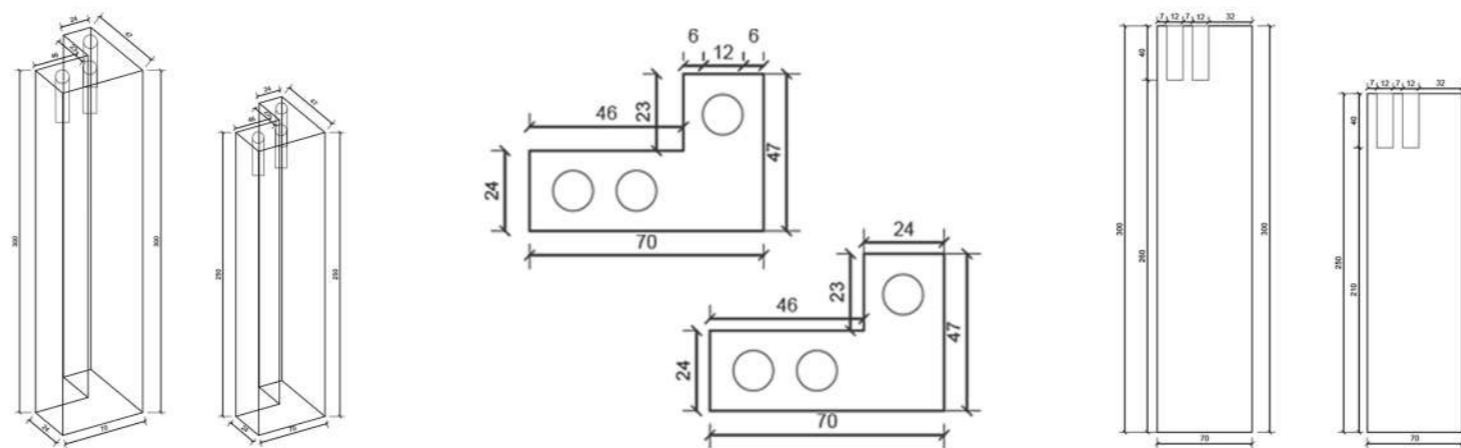
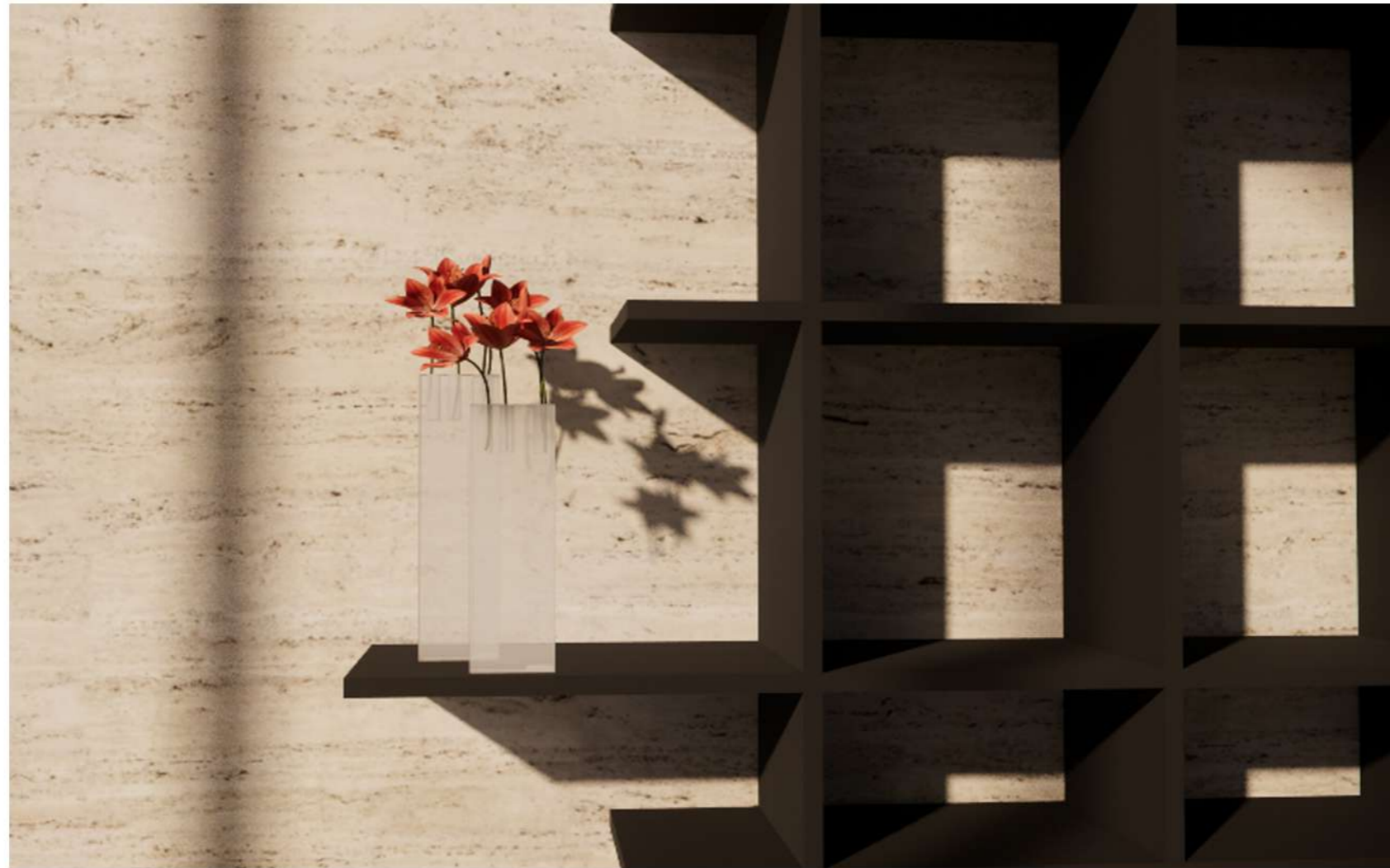
# 09.

## Object design

### Puzzle flower vase | Cape Town

Candlestick holders and vases are currently on trend and can be seen all over social media. There is however a gap in the Design and Décor industry for acrylic candle holders/vases and décor and design enthusiasts around the country need your designs in order to bring new life to their boring table settings. Your challenge is to design a candlestick holder / vase with a maximum height of 300mm and a maximum width of 70 mm. Note : Your holder van only consist of acrylic / perspective but can be any colour and shape of your choice.





Puzzle flower vase | For my vase design , I have created a versatile and unique multi-purpose product that consists of two components. These components have the same shape but vary in height. The two separate components acts as a puzzle ,allowing you to personalize your space with a one-of-a-kind decorative piece. The material utilized in the creation of this vase is a carefully sourced and manufactured white pearl acrylic, provided by the company Clear Design.

# 10.

## Technical working drawings

### Office meeting rooms

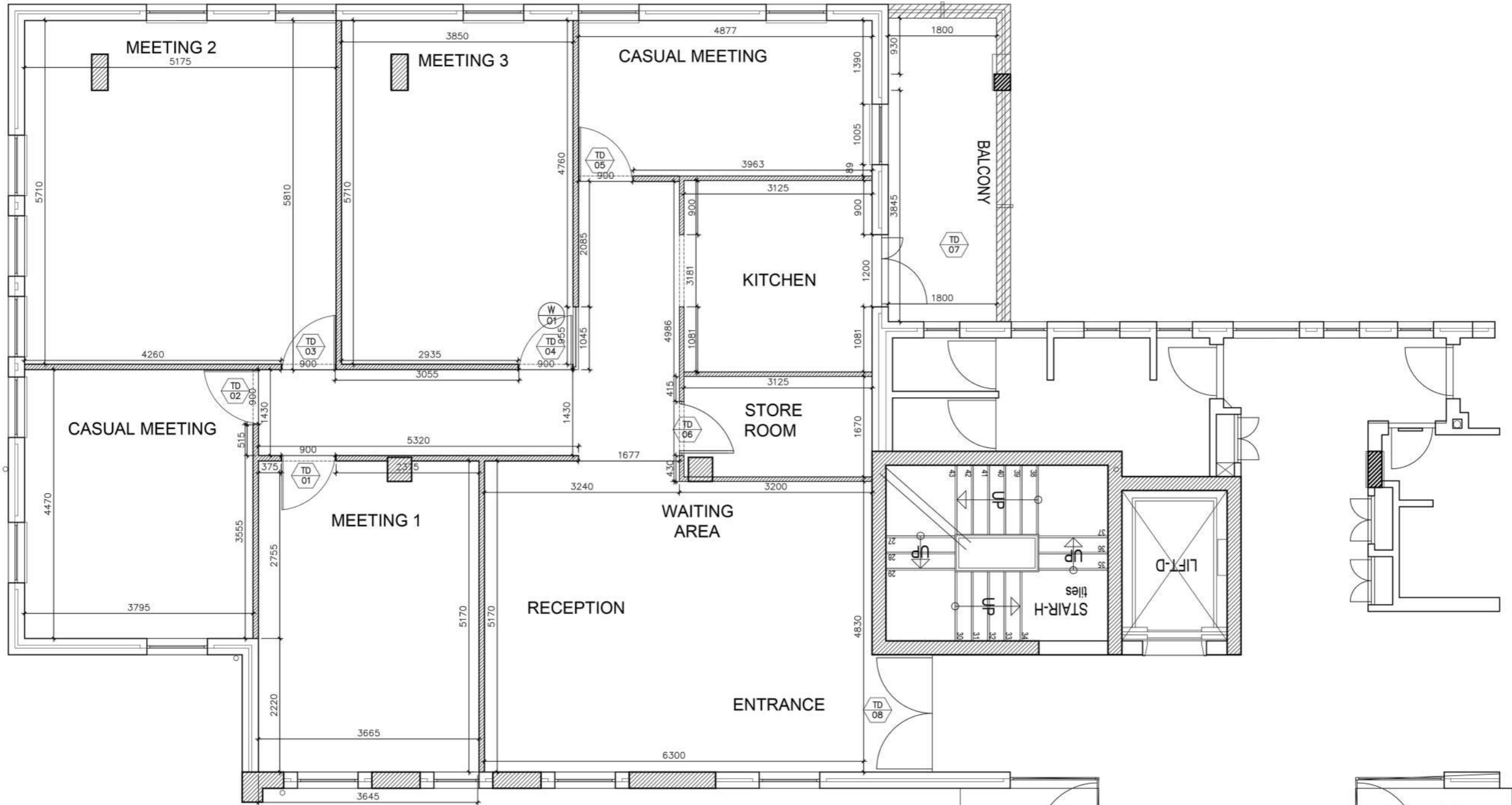
Technical working drawings for new office meeting rooms. The working drawing package consists of the following | General layout, new build work, data & electrical, lighting , floor finishes layout and door and window schedules.







New meeting rooms floor plan | General layout  
Scale NTS

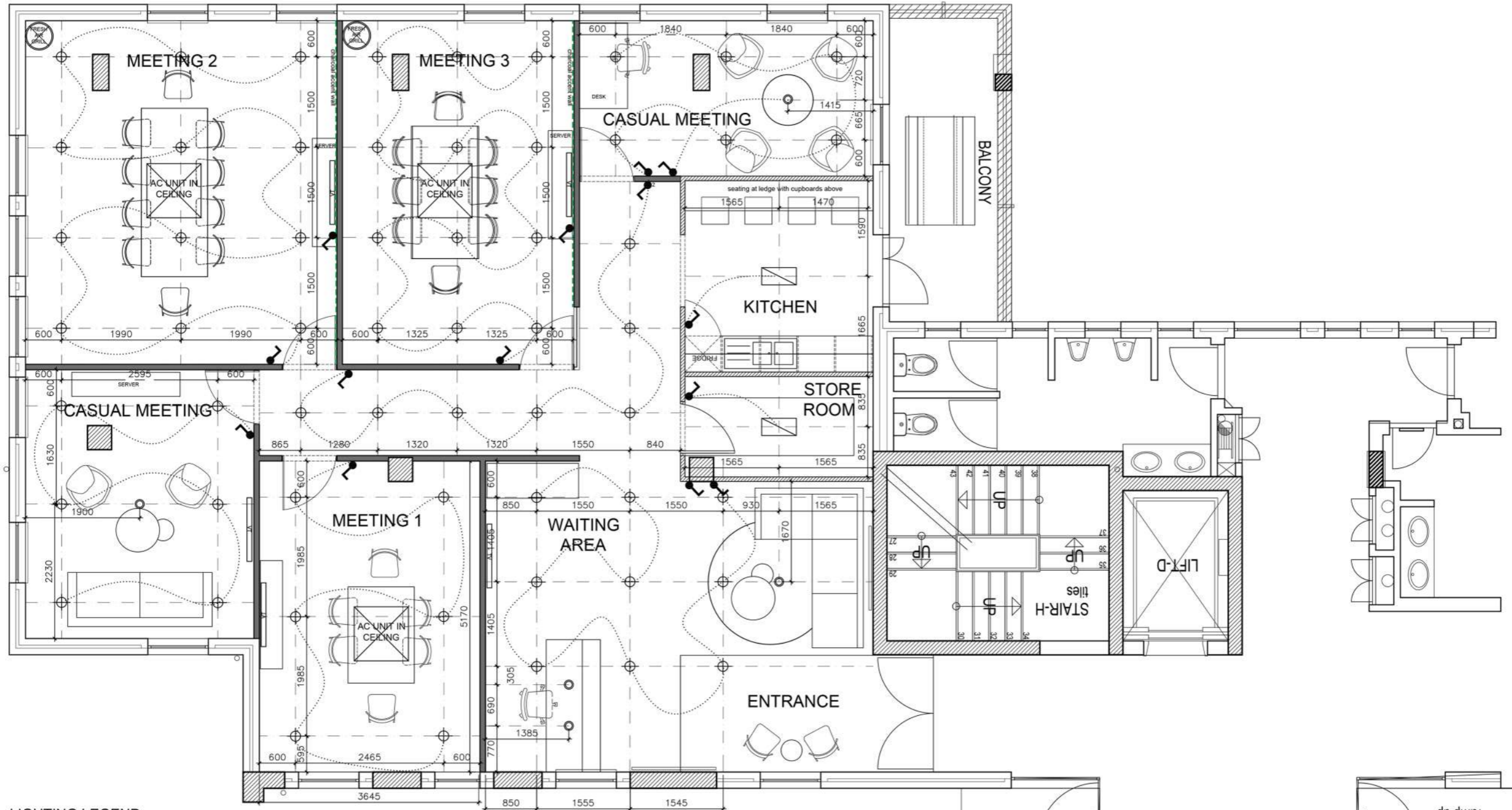


NOTES:  
 ALL WALLS TO BE PAINTED WITH PLASCON WALL AND ALL OR SIMILAR. COLOUR TBC  
 ALL CEILINGS TO BE PAINTED WITH WHITE PVA  
 DOOR FRAMES, SKIRTINGS AND EXISTING WINDOW FRAMES TO BE PAINTED IN WHITE VELVAGLO.

NEW 90mm DRYWAL with Insulation

New meeting rooms floor plan | New build work  
 Scale NTS





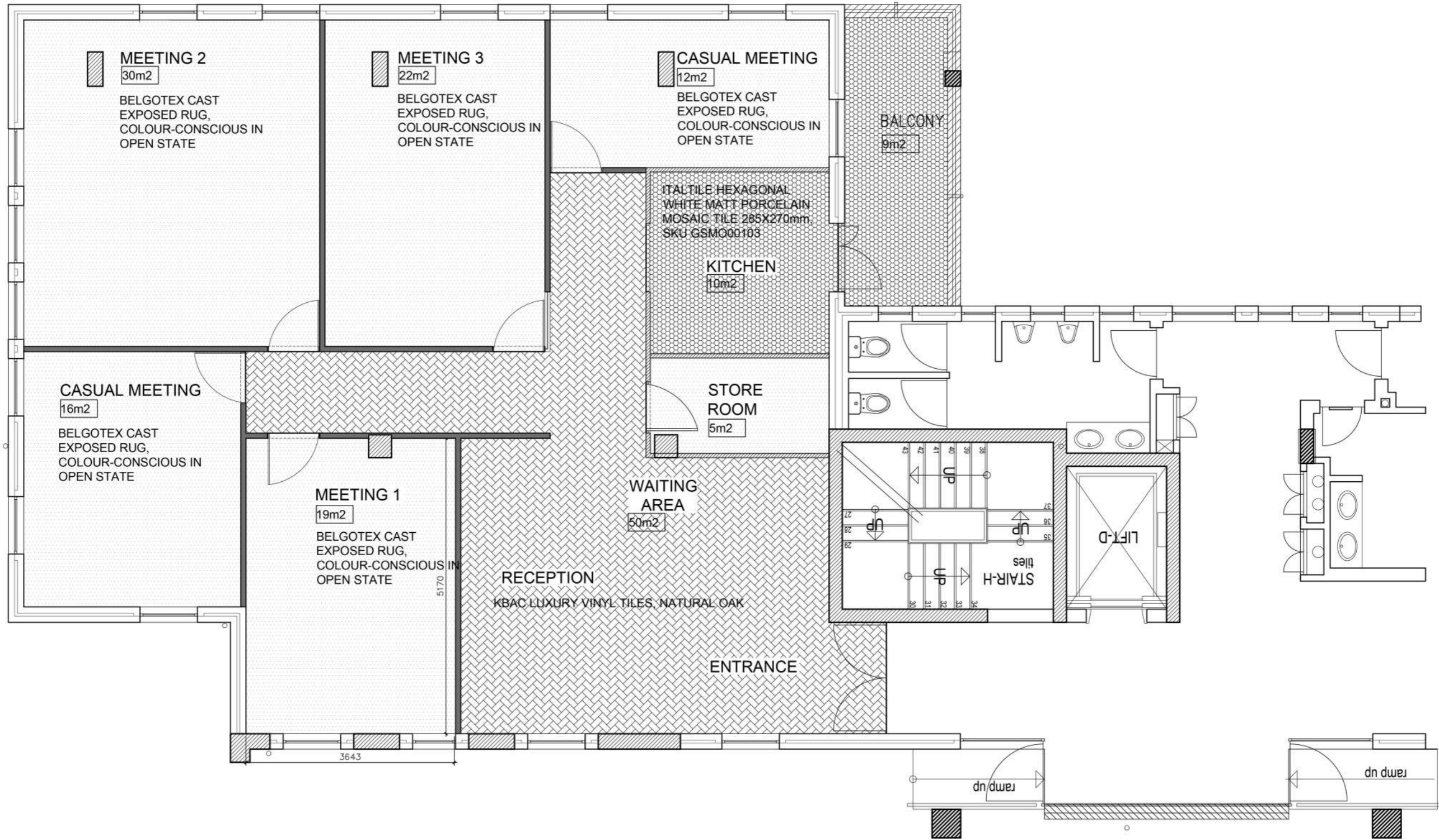
**LIGHTING LEGEND:**

	Actros 2 – White – 30W / 4000K (Spazio)LED downlight - 2859.30.40.31 Lightstore
	Switch Spec: White 4 Lever 1 Way Light Switch - SKU ESW008 WHITE, Lighting.co.za
	Ceiling light Spec: Grate – LED Steel Pendant Black / Opal- P616B Lightstore


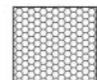


	Fresh air grill TBC ENGINEER
	Cassette unit in ceiling TBC ENGINEER

**NOTE :** Sombre Black Nordic Pendant Light- SKU 8675.10, Lighting.co.za  
Final position of pendant lights to be determined on site.

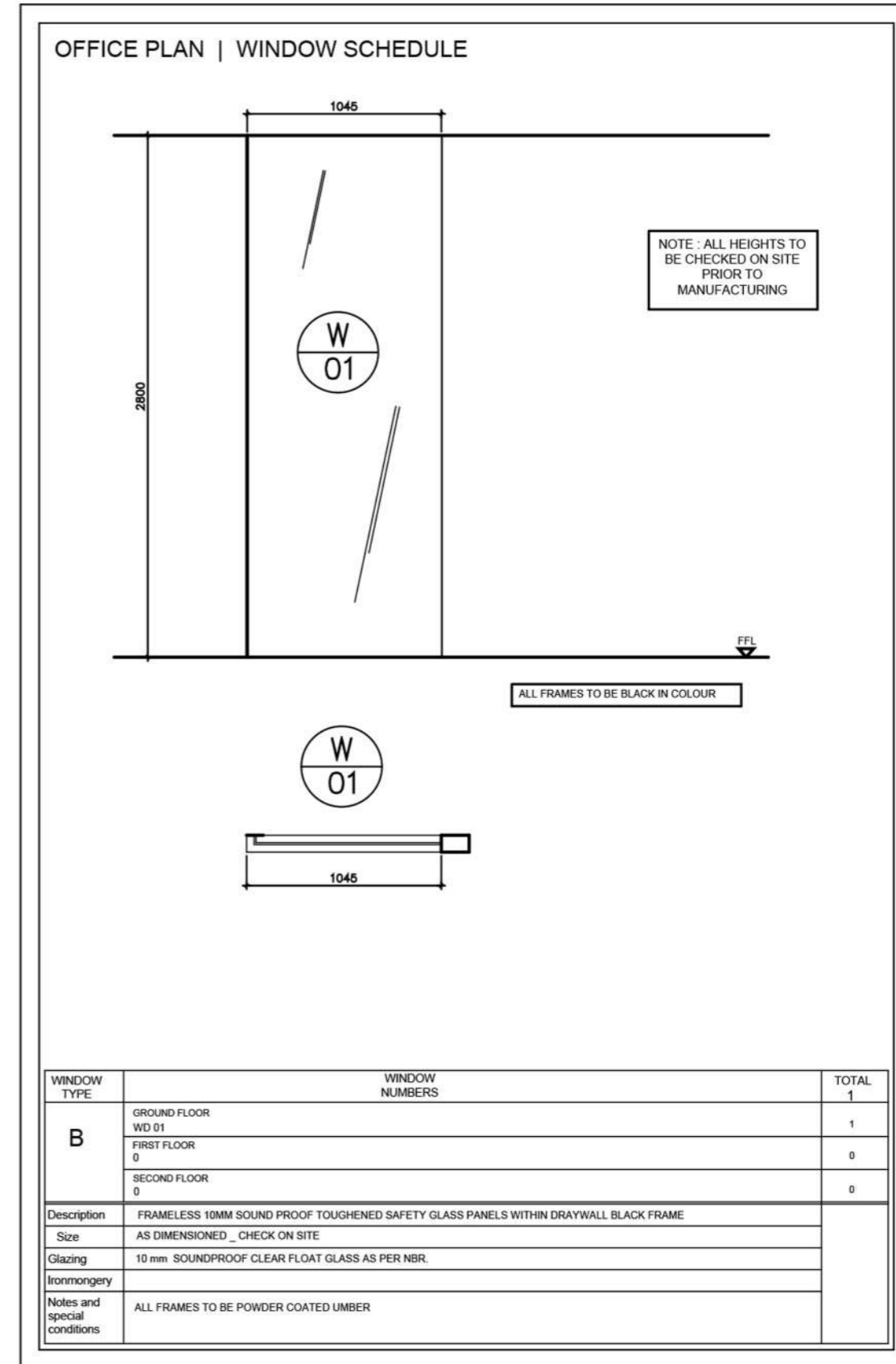
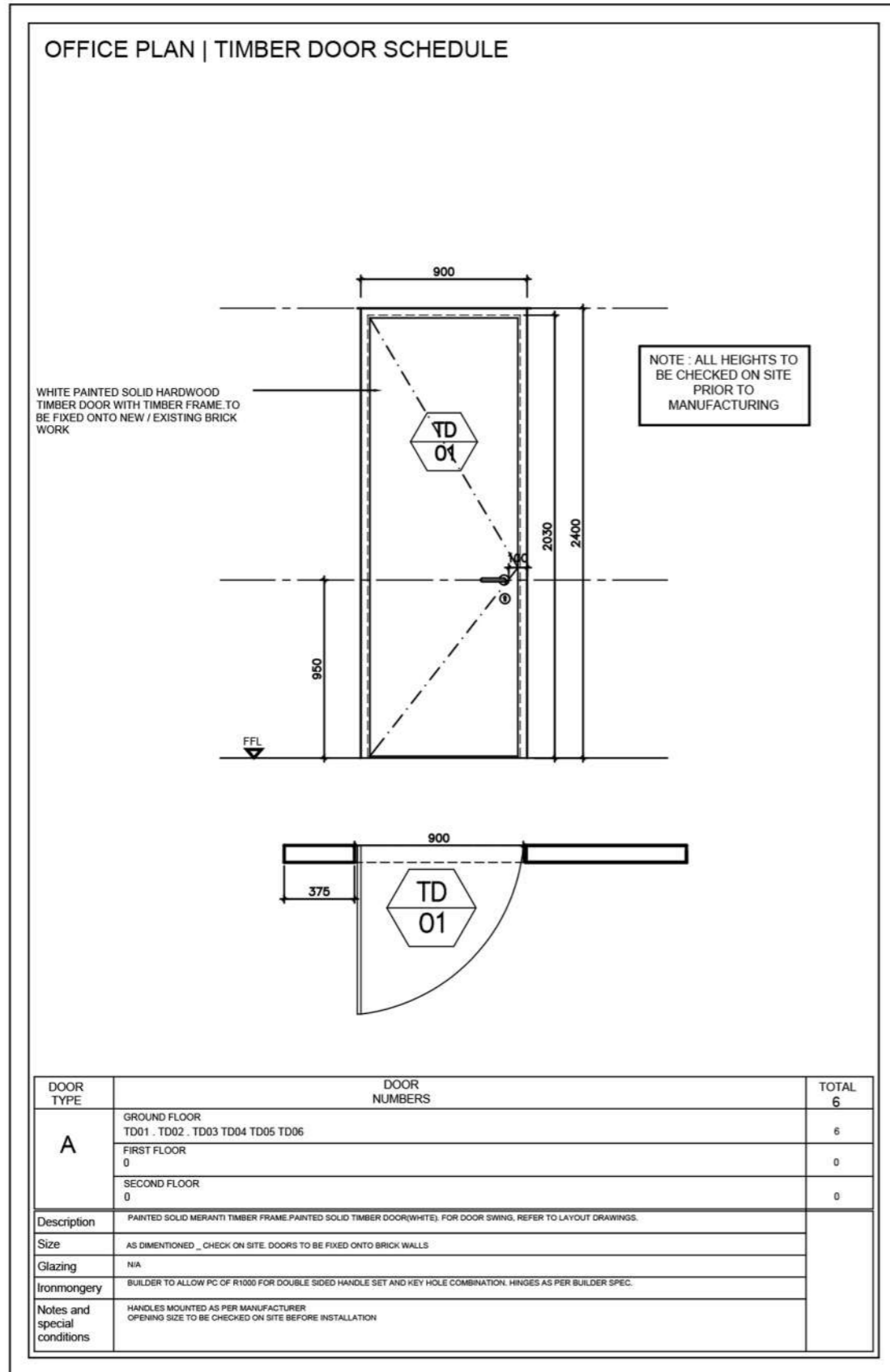
New meeting rooms floor plan | Lighting  
Scale NTS



NOTE : NEW SKIRTINGS TO ALL WALLS WHERE THERE IS NO POWER SKIRTINGS. STAINLESS STEEL EDGE TRIMS BETWEEN FLOOR FINISHES WHERE REQUIRED . 150mm x 16mm painted hardwood skirting with 5mm x 5mm cutout 50mm from the top

-  BELGOTEX CAST EXPOSED RUG, COLOUR-CONSCIOUS IN OPEN STATE 104m2
-  ITAL TILE HEXAGONAL WHITE MATT PORCELAIN MOSAIC TILE 285X270mm, SKU GSM000103 19M2
-  KBAC LUXURY VINYL TILES, NATURAL OAK 50M2
-  GENEISIS BLACK STEEL EDGE TRIM - 82 ANTHRACITE 10M2

New meeting rooms floor plan | Floor finishes layout  
Scale NTS



New meeting rooms floor plan | Door and window schedules  
Scale NTS

**THANK YOU!**

SEE YOU SOON :)