

## THE BRIEF

You have been appointed as the Interior Designer for a new and exciting urban experience in the heart of Woodstock in the form of a LUXURY Holding Hotel paired with four luxury eco pods within a 4-hour drive from Woodstock. The Holding hotel will be the first stop in your journey. So let's take a look.

## THE VISION

WU WEI ; CHINESE WORD FOR “NOT - DOING”

The WU WEI hotel will be the first stop in this luxury holiday experience. Where comfort and class roam around in a symbiotic relationship. Created to serve its guests and link back to the purpose of our core pillar “WU WEI”. To have you surrender into the natural flow state. We offer only the most popular standards of service when it comes to the individual treatment of our guests. our one true goal is to help achieve a calm and peaceful state of mind when you are in our care. A sensory driving journey that will help guide you into your own comfortable flow state. Featured zen garden and sensory deprivation tanks.



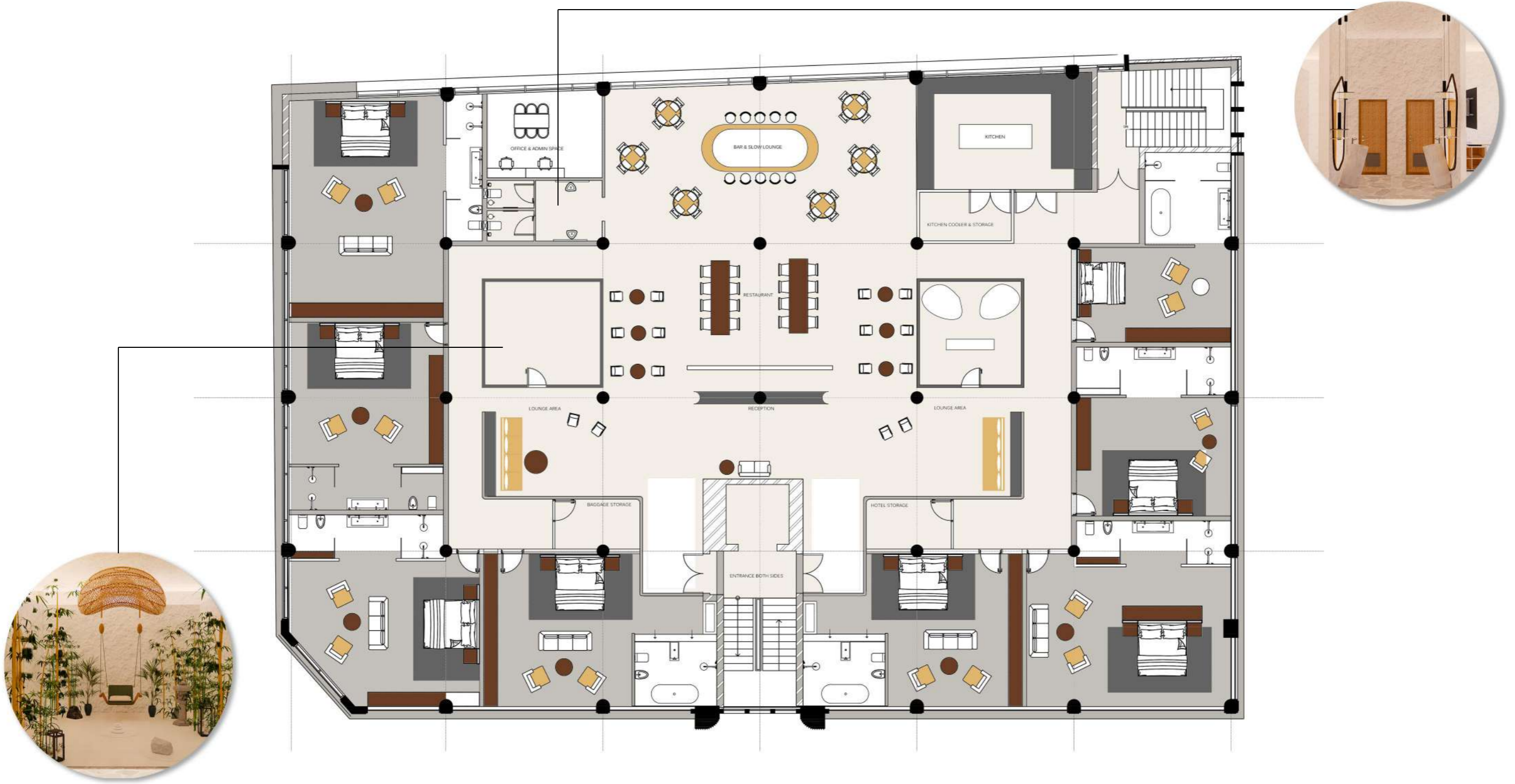






COPPER CRUZ BAR







ROOM 4.







### THE BRIEF

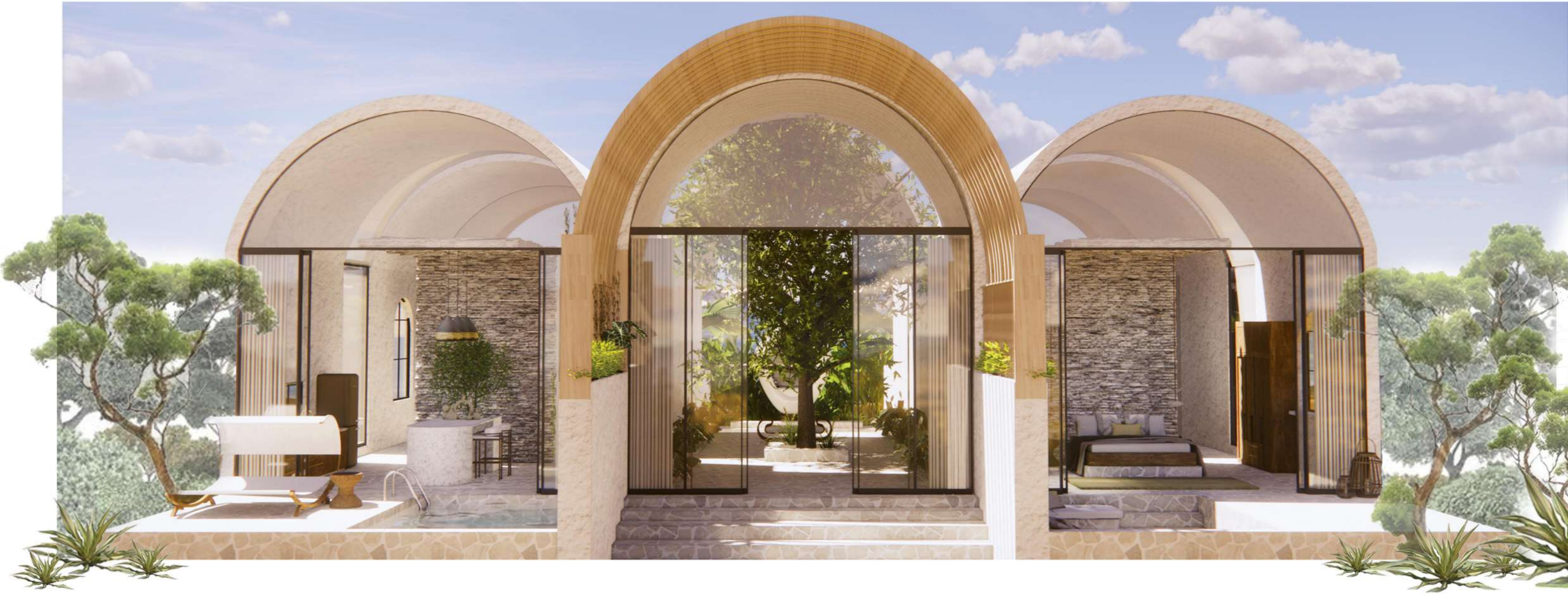
You have been appointed as the Interior Designer for a new and exciting urban experience in the heart of Woodstock in the form of a LUXURY Holding Hotel paired with four luxury eco pods whose location is within a 4-hour drive from Woodstock. The luxury pods will be the second stop in your relaxing journey. Let us take a closer look ...

### THE VISION

The pods are developed following the natural slope of the plot so that each space enjoys an unobstructed view of the sea and the vast landscape surrounding it. Your very own “floating” world is perfect for an escape into one of Africa's undiscovered gems. Where both families and singles will equally enjoy the many activities, luxury treatments, and overall complete privacy. The pod's sport top-of-the-line DORNBRACHT amenities in the wellness and treatment section. Our aim here is to help guide you through the experience of relaxing as you have never before. The best thing you can gift yourself:

is the space and time to relax & revive.





UKIYO PODS  
“THE FLOATING WORLD”



OUTSIDE LOUNGE

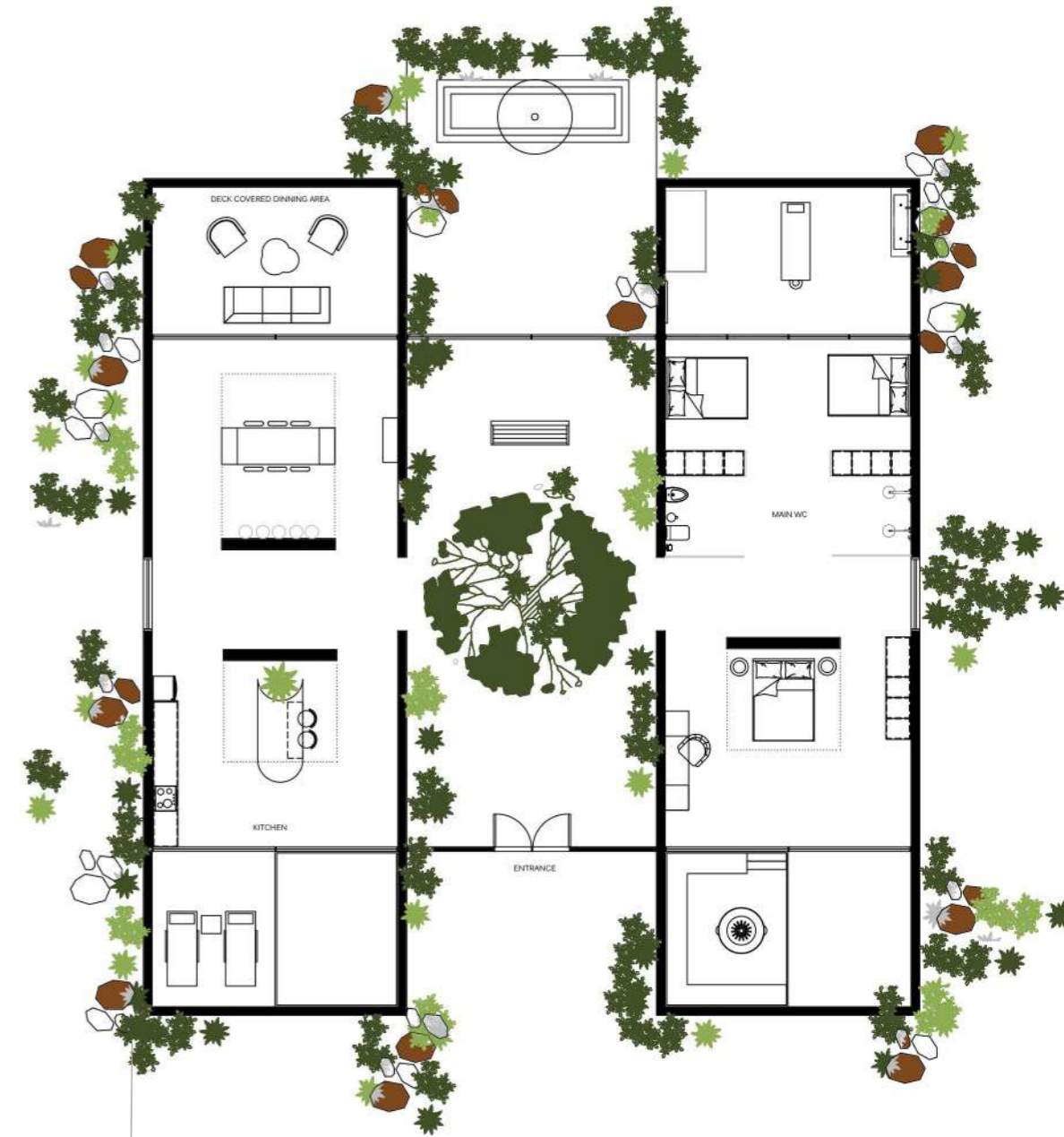


HANGING MEDITATION POD



VIEW FROM THE BATH





TWO SLEEPER POD  
FLOORPLAN NTS

FOUR SLEEPER POD  
FLOORPLAN NTS



MAIN BEDROOM





EN SUITE W.C & SAUNA



DORNBRACHT HYDRO SHOWER FEATURE





## THE BRIEF

Atlantic Studios is known as a cutting-edge film and television studio facility in the industry. Unfortunately, when it comes to their canteen on the 2nd floor of the main building together with their cast and crew lounge their facilities fail to impress. Atlantic Studios has approached YOU to re-design their current canteen together with their crew and cast lounge in order to breathe new life into these neglected spaces. The upgrade of these areas will ensure that their cutting-edge status remains intact for years to come.

## THE VISION

In designing this space I wanted to hold a few key factors close. Firstly, designing a modern, clean, and professional space and secondly capturing the richness and flare that shines through in the film and production industries. A space in which both actors & crew members alike can come together in a comfortable and inclusive setting. My final design was inspired by all these factors and more. The bare and raw nature of the building inspired me to use grounding tones, such as warm timbers and soft golds.





MAIN LOUNGE





CREW LOUNGE



" THE NAUGHTY FROG CAFE "

CANTEEN



**MATERIALS LIST:**

1. Plaster textured wallpaper x Superbalist
2. Black & Grey washed wallpaper x Superbalist
3. Olive thin velvet upholstery x Hertex
4. Avco rug in White Dust x Haus
5. Blondie wood x Leroy merlin
6. Granite counter top x Italtile Cape Town
7. Custom dark wood paneling x custom
8. Camps Bay rug x Haus
9. Swirl tile in creme x Weylandts
10. Butterscotch leather x
11. Fan club wallpaper x Cara Saven
12. Upholstery x Hertex
13. Rug samples x Rugology
14. Cherry imitation oak x Custom build x Ben Bing.





## THE VISION

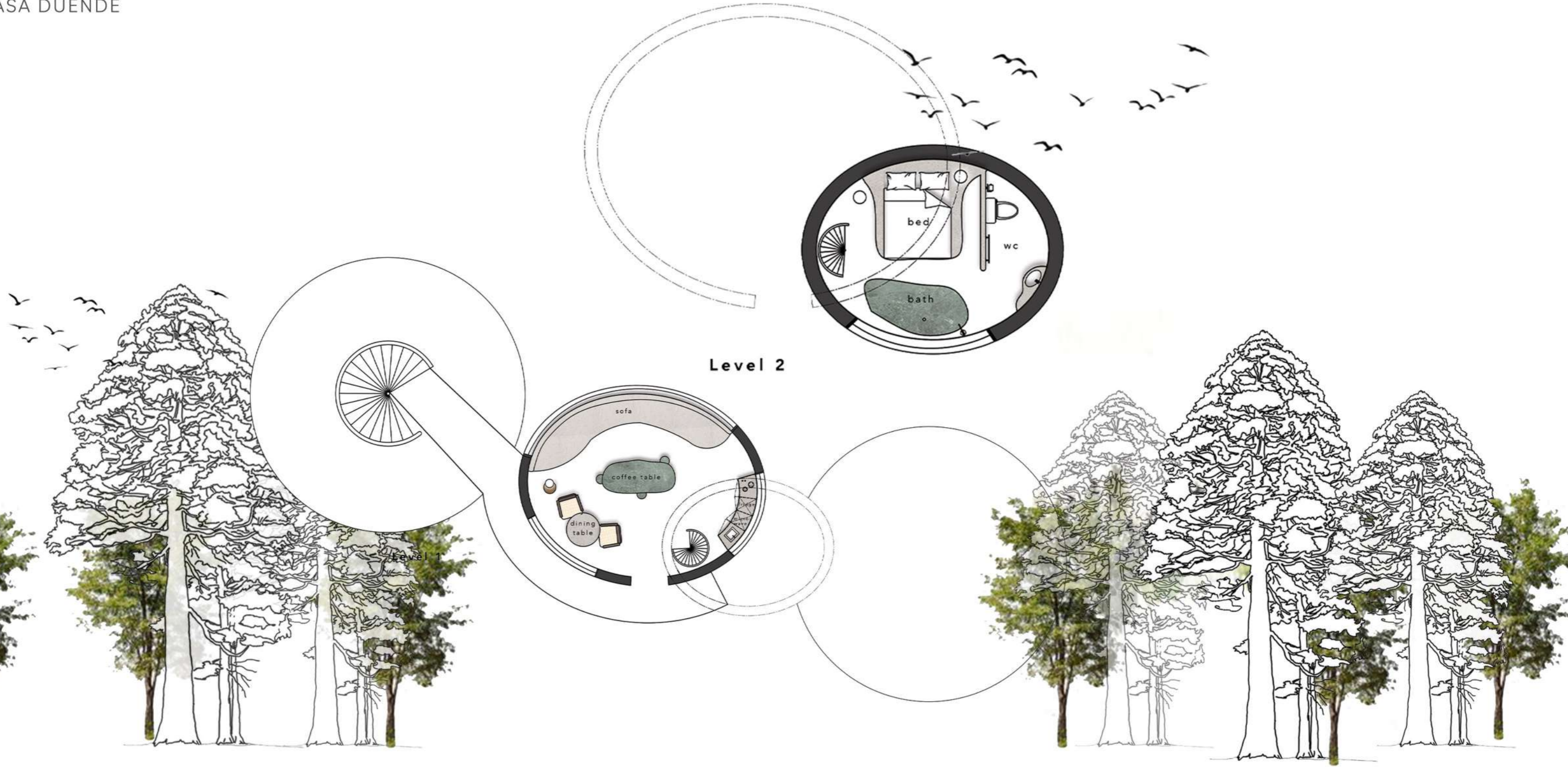
CASA DUENDE, our space was fashioned to serve two creative individuals by giving them a personalized space in which they can relax and produce works of their own. We chose to curate our treehouse for a writer, author, or poet. We were heavily inspired by all-natural, organic, and biophilic designs. A domed cylindrical space, generated by 3D printing concrete to achieve our envisioned free-flowing organic interior, that seamlessly meshes with the shell of the building itself. The interior space is natural to embrace its surroundings. The colours are muted, earth-toned colour palettes with furniture feature pieces to match, complimented by Spanish art.



## WHY?

(n.) *"the mysterious power of art to deeply move a person"*

*We read poems because they change us, and our reasons for writing them to hover around that same fact. A good poem speaks to and from a place that belongs to us - that elusive pitch of being some might call the soul, the psyche, the sub- or unconscious. The best readers know that this place is where poems go when they hit hard, teach us, and reach home. The Spanish poet, "Frederico Garcia Lorca, named the keeper of that space the - Duende.*



## A CLOSER LOOK ...



LIVING AREA



LOUNGE



DINING AREA



BEDROOM



KITCHEN



elevation level 2  
CC



elevation level 1  
AA



elevation level 2  
DD



elevation level 1  
BB



## MATERIALS LIST

1. Wall & Flooring | Renocrete | Mollusc
2. Couch | Pacha saddlecloth | Mavromac
3. Carpets | Softology | Plum | Sheepskin rug
4. Bedding | Linen | Stonewash linen | Standered linen | Mavromac
5. Curtains | Sheer white | Milky way | Mavromac
6. Bath cladding | Guatamala green marble | Womag
7. Custom Kelly Weastler inspired coffee table |
8. Smokey mirror | All Glass
9. Black steel accents
10. Brass accents
11. Salvador Dhali painting

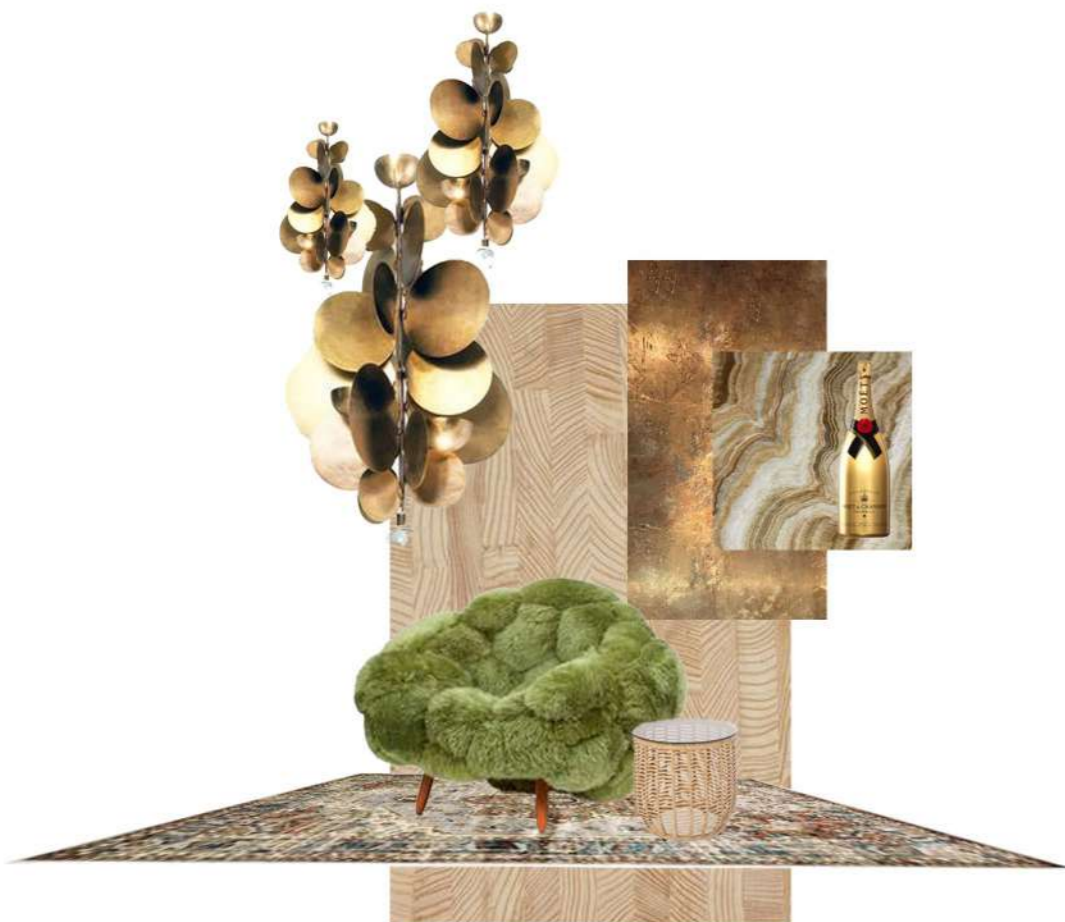


## THE BRIEF

For this project, we were tasked with creating a crazy and captivating festival space. As a class, we were shown a previous festival that we were to reimagine and draw inspiration from. The Little Gig festival was carefully curated. A boutique festival that ran for a total of three years. It was a huge one-day, one-night party, that sported the most outrageous elements. We were given the project of designing one glamping tent, one food stall, and the overall bedwin tent which would be the main communal space, as well as featuring gin and tequila bars.

## THE VISION

I wanted to essentially create a space that felt comfortable for any person to come together, party, relax, and just enjoy their time in my ethereal wonderland. Centered around the ancient rune concept. A lush and soft forest environment paired with carefully stylized vintage furniture. That fills the glamping and slow lounge areas. I wanted every piece I put in my space to be individually unique. As every person who will enter the space be so themselves.











GLAMPING TENT





# 06

CAESARSTONE



## THE BRIEF

Seated in the lap of Table Mountain, beneath sea-salted skies and windy thermals, stands South Africa's home of democracy; also known as The Houses of Parliament. Within this historical complex, you will find The National Assembly, both old and new. Our role as the designer was to re-imagine the interior & architecture of the National Assembly building. To rise it from the ashes again.

## THE VISION

Focusing mainly on the interior layout and design. I wanted to capture the pure and raw beauty of the naturalistic features of South Africa. Using woods & stone in combination with and leaning more towards my second vision strand, one of afro-futurism, I chose to dress the interior in gold hammered metals, soft burnt velvets, and a striking furniture collection. Clothed in subtle prints. The design overall is bold, rooted, and illuminated in golden light.

# 06

CAESARSTONE



ENTRANCE VIEW

VIEW FRM PODIUM

# 06

CAESARSTONE



CUSTOM BENCH SEATING & MONITOR STAND DESIGN

2ND FLOOR VIEWING LOUNGE

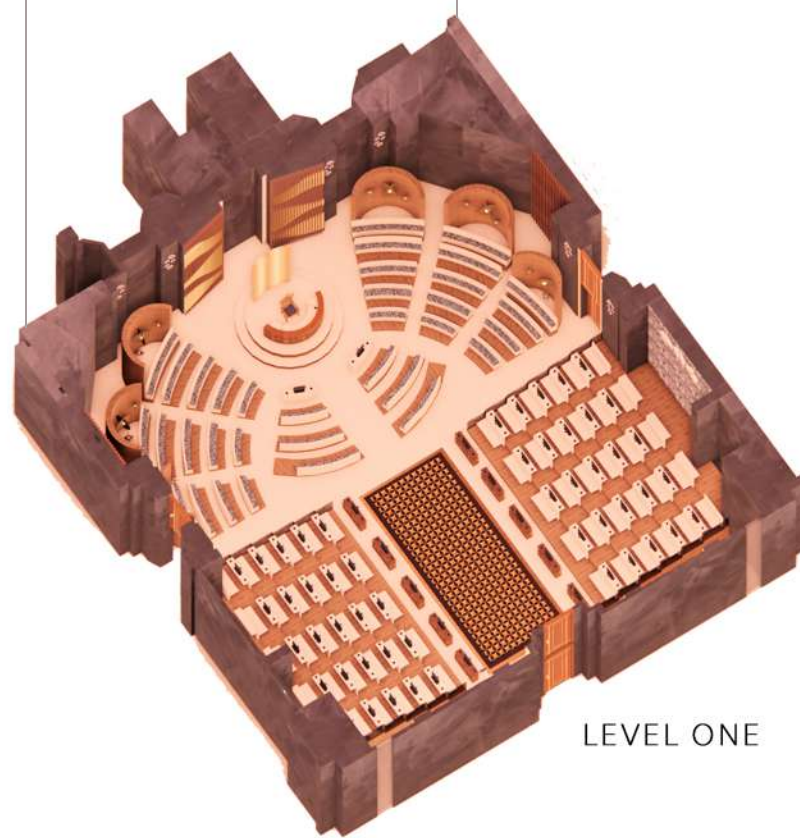


# 06

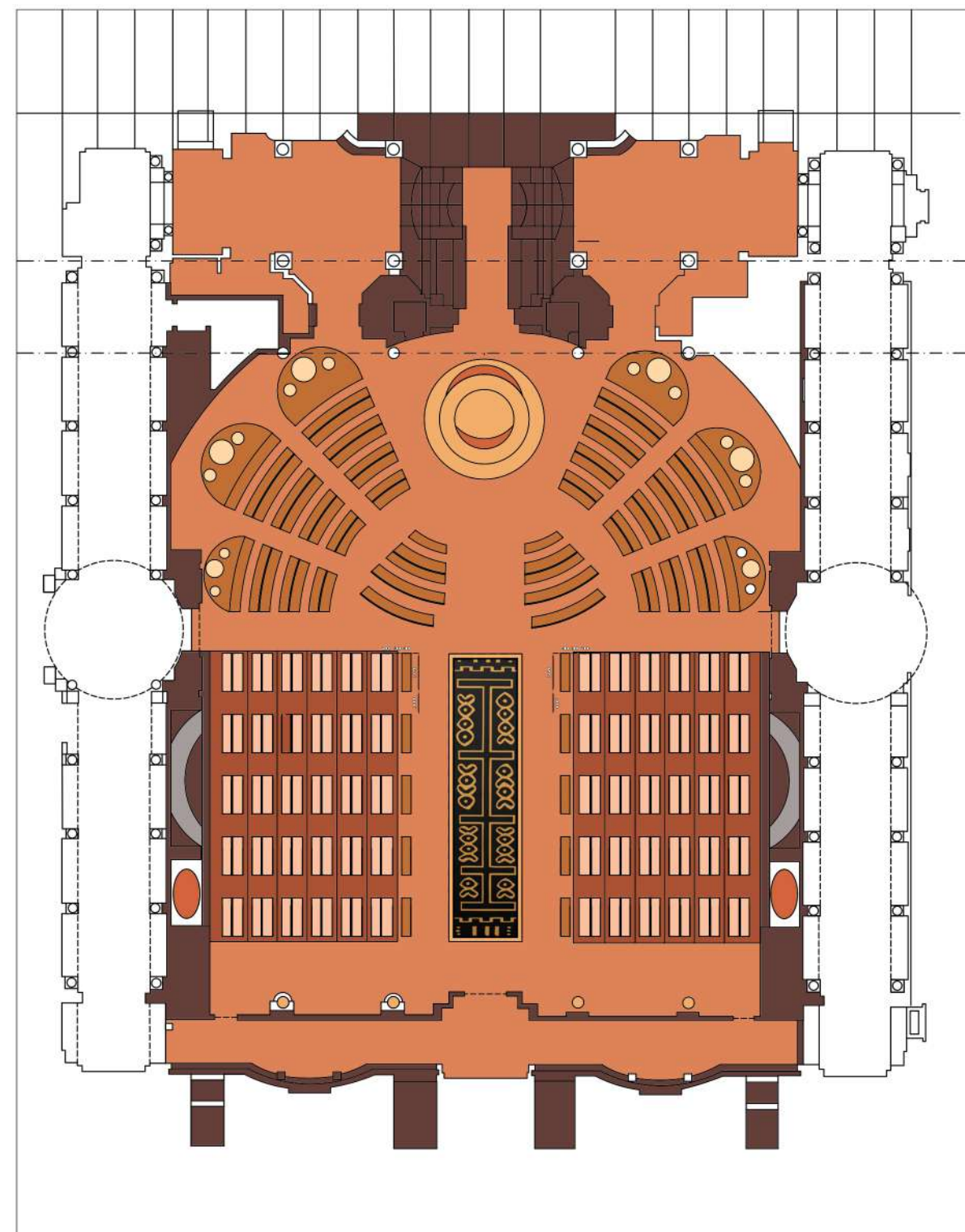
CAESARSTONE



LEVEL TWO



LEVEL ONE



LEVEL ONE FLOORPLAN NTS



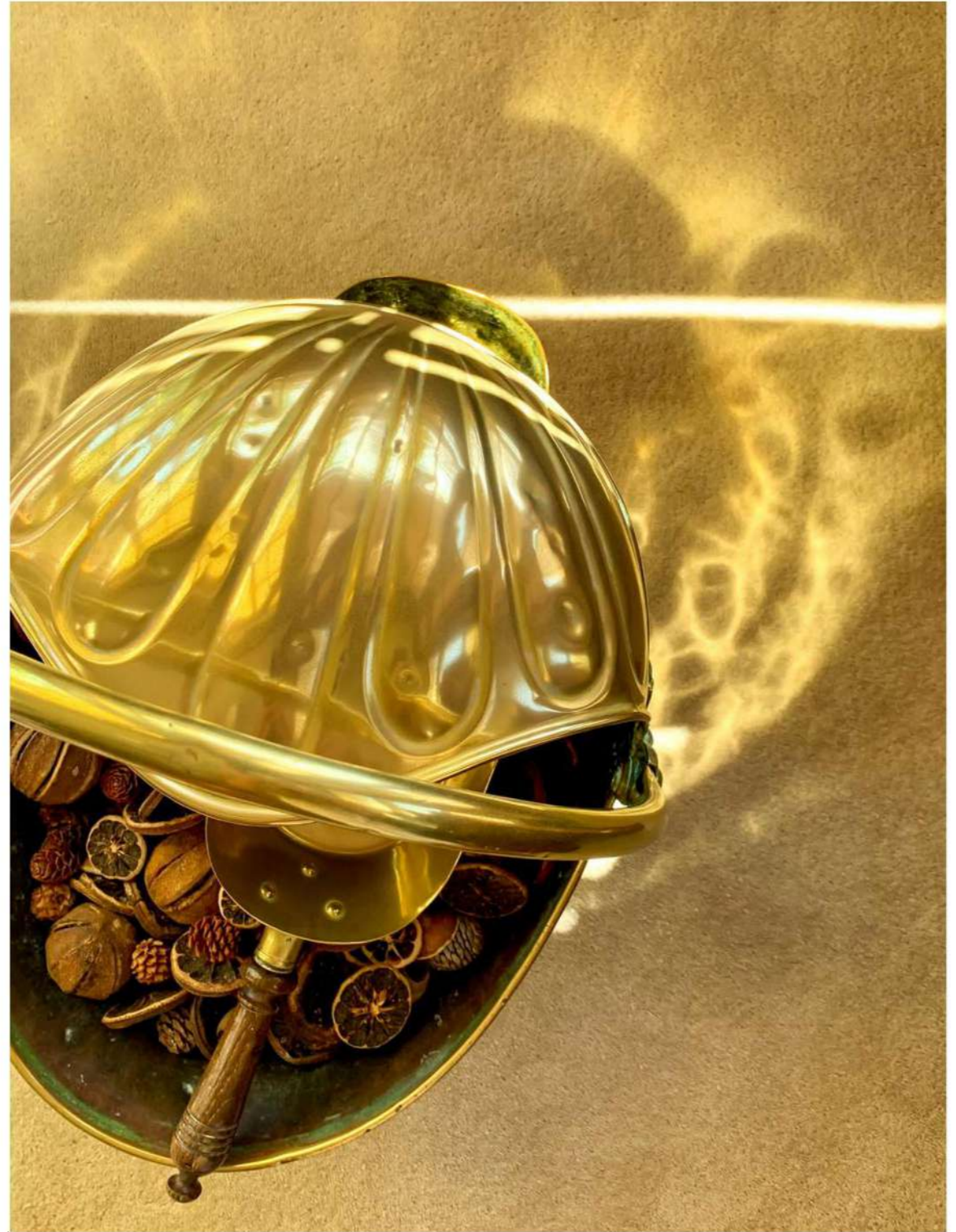
## THE BRIEF

1. EXTERIOR PHOTOGRAPHY. CAPTURED AT ELLERMAN HOUSE HOTEL, CAMPS BAY
2. INTERIOR PHOTOGRAPHY. CAPTURED AT ELLERMAN HOUSE HOTEL, CAMPS BAY
3. DETAIL PHOTOGRAPHY. CAPTURED AT ELLERMAN HOUSE HOTEL, CAMPS BAY





EXTERIOR



DETAIL



PRODUCT

INSPIRED BY THE LILY FLOWER AND THE TONES AND TEXTURE OF THE MOON

MADE OUT OF ONE MATERIAL & FINNISHING MATERIAL UNFIRED PORCELAIN



HIDDEN BOTTEM, TEXTURED TO RESEMBLE THE FACE OF THE MOON



THE CUSTON HAS BEEN DESIGNED DETACHED USING THE LEATHER STRAPS.



LOGO DESIGN

BLACK PAINT FINNISH WITH BUTTERSCOTCH LEATHER INLAYS. WITH A HANDMADE PACHA WOOL TUBE CUSION.







HAND RENDER WITH COPICS



MAGAZINE EXTRACT

THANK YOU!

---

MARY RAGAVELAS



---

NO. +27 72-475-2495

MARYRAGAVELAS@GMAIL.COM

PORTFOLIO



MARY RAGAVELAS  
INTERIOR DESIGNER



*DEDICATED TO ;*

*MY FAMILY, MY BEST FRIEND*

*&*

*ALL THE AMAZING SOULS THAT HAVE GUIDED ME THROUGH MY CREATIVE JOURNEY*



# CONTENTS

---

01

WU WEI

HOTEL DESIGN

A LUXURY HOLDING HOTEL IN WOODSTOCK.

P1- 8

02

UKIYO

POD DESIGN

VACATIONAL PODS LOCATED IN THE HEART OF CAPE TOWN.

P9-16

03

ATLANTIC STUDIOS

FILM STUDIO RE-DESIGN

RE-CONCEPTULISING AN INTERIOR & LAYOUT PLAN OF A FILM STUDIO.

P17-24

04

CASA DUENDE

TREEHOUSE DESIGN

A POD OASIS TUCKED AWAY HIGH IN THE FORGOTTEN RED WOODS OF SOUTH AFRICA.

P25-30

05

LITTLE BIG

FESTIVAL DESIGN

AN ETHERIAL DEEP DIVE INTO NATURE & ALL THE SPLENDOR THAT COMES WITH MOVING YOUR BODY TO SOME GROOVY BEATS

P31-36

06

CAESARSTONE

HOUSES OF PARLIAMENT DESIGN

RE-CONCEPTULIZING THE NATIONAL ASSEMBLYS INTERIOR.

P37-42

07

Bits & Bobs

CANDLE HOLDER , STOOL DESIGN, HAND RENDERS AND PHOTOGRAPHY

P43-50

