

*Natalia Osman*

---

DESIGNING YOUR DREAMS

01.  
LUXURY HOTEL

06.  
COTINGA GETAWAY

02.  
ELLESMERE ENTRANCE

07.  
WHISKEY HOUSE

03.  
HAVEN ESCAPE

08.  
CHAIR DESIGN

04.  
GEOMETRIC

09.  
GRIIK PACKAGING AND LOGO

05.  
TRAILER

10.  
TEXTILE DESIGNS

DIVE INTO THE EYES OF MY DESIGN...

---

# LOUX HOTEL

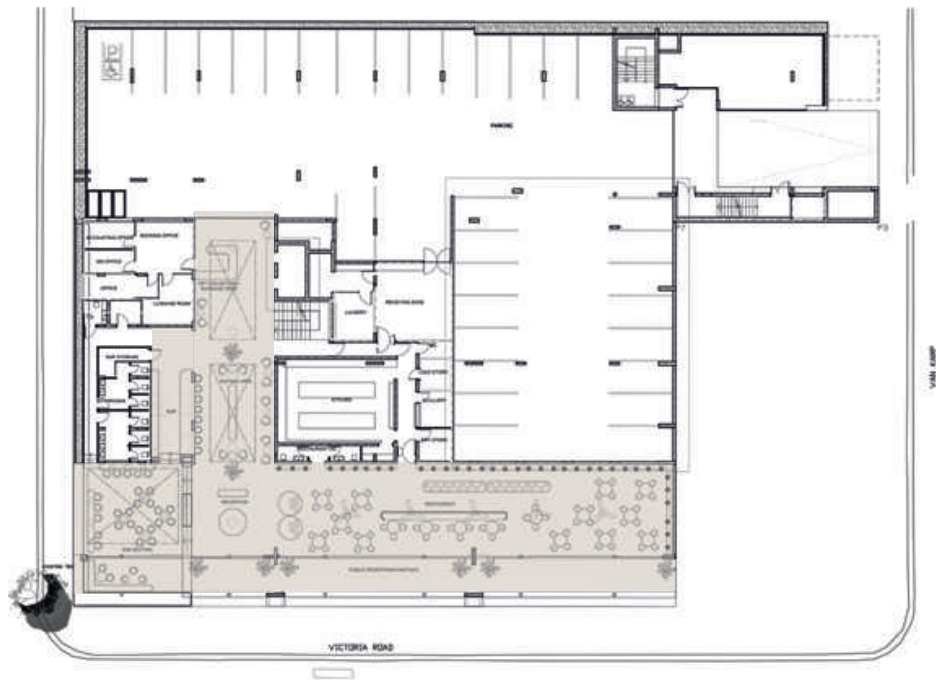
noun: luxury  
a state of great comfort or elegance

Loux Hotel, a place of luxury and comfort with the atmosphere of one of the finest areas in cape town, Camps Bay  
Cape town, a mini Europe, with be introducing a new hotel called the Loux. This is where i would like combine Mediterranean design and South African design to create a luxury space filled with natural and environmentally friendly materials and finishes that match the surroundings of camps bay, such as the twelve apostles, the beach and the vibe of the famous camps bay strip. i would like to create a space that fits into the look of Camps bay yet has a European feel to it which makes it stand out,

Matching the exterior of the buildings, woods, concretes and terrazzo will be used in the interior, a very bright and clean look, where the spa has a comforting moody look to emphasis the feeling of relaxation and spiritualness of your experience.  
The restaurant and bar, hotel guest exclusive or reservation only will have an open cleanliness with unique aspects to create a Mediterranean dining experience with South African cuisine. Maximizing the look of the space provided, many long and grand designs have been added.

Rooms of the loux have a variety of views from cape town. Each room will be treated individually by paying close attention to the surroundings of it, using softer or more textural elements.





GROUND LEVEL PLAN  
SCALE NTS



GROUND LEVEL (RECEPTION / BAR / RESTAURANT)  
SCALE NTS

FIRST IMPRESSION (RECEPTION)







WAITING AREA / BAR



RESTAURANT



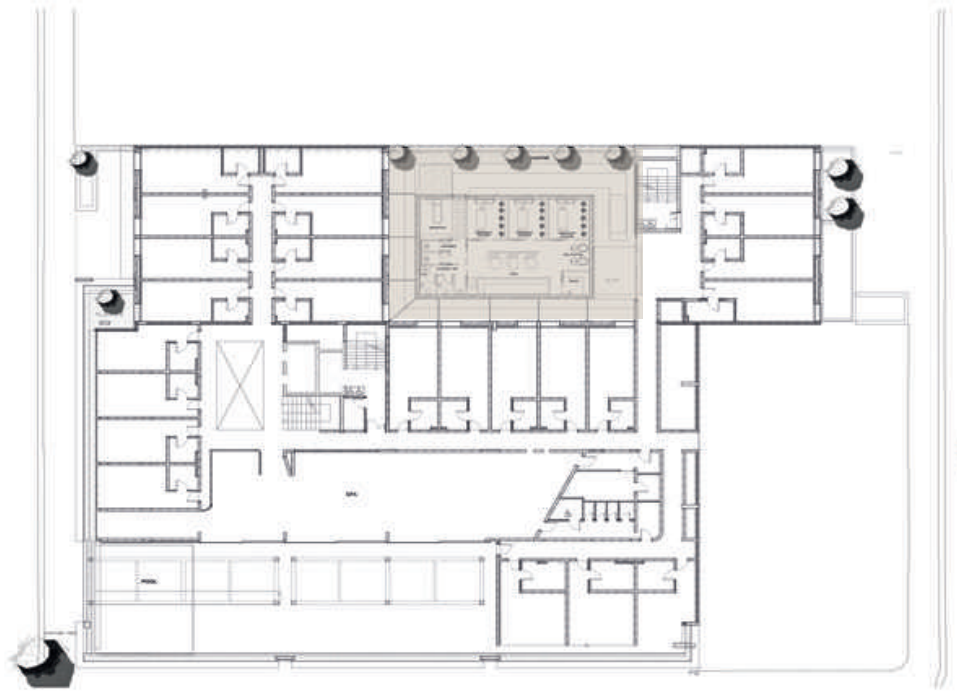




RESTAURANT VIEW 2



BAR



LEVEL 3 PLAN  
SCALE NTS



LEVEL 3 SPA  
SCALE NTS



SPA RECEPTION



WC







POOL AND RELAXATION AREA



TREATMENT ROOM



SHOWERS

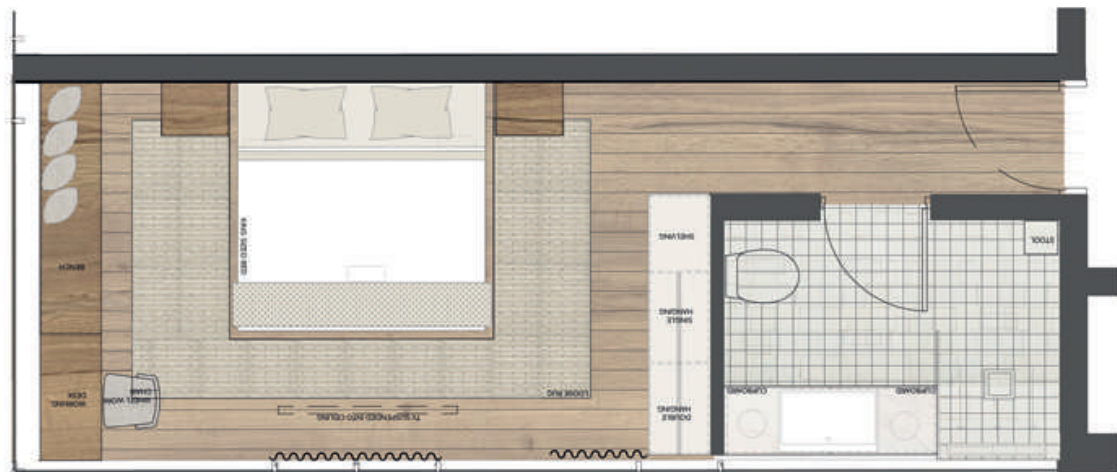




GROUND LEVEL PLAN  
SCALE NTS



ROOM 95  
SCALE NTS



ROOM 80  
SCALE NTS



BEDROOM 80





ENTRANCE (ROOM 80)



BATHROOM (ROOM 80)



BEDROOM (ROOM 95)

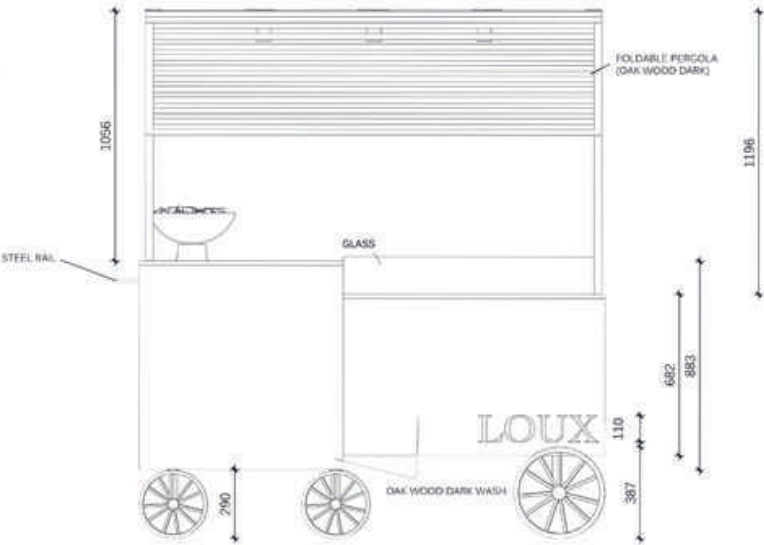


BATHROOM (ROOM 95)

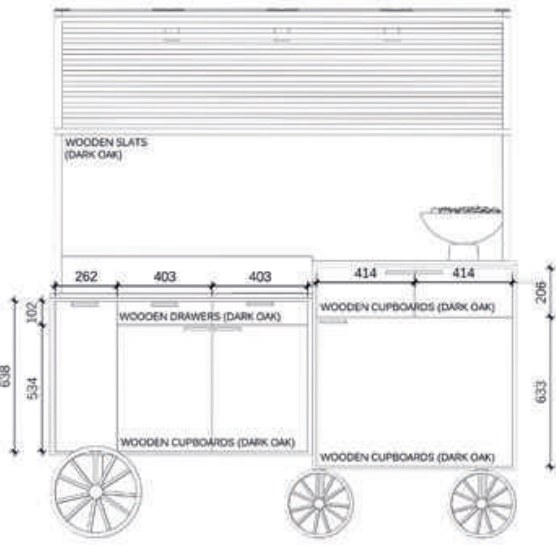




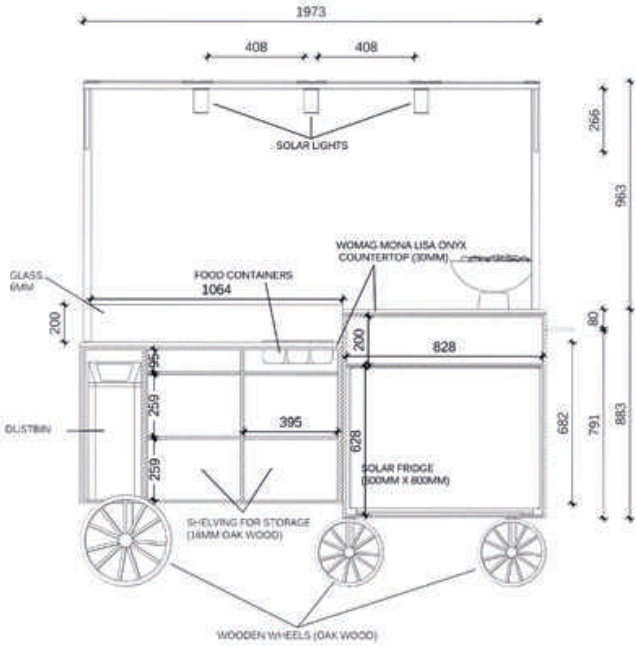
# TRANSPORTABLE DRINKS CART TECHNICALS



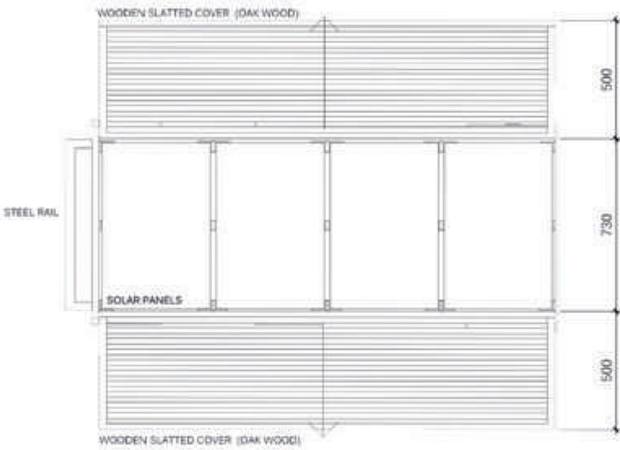
**FRONT VIEW**  
SCALE 1:25



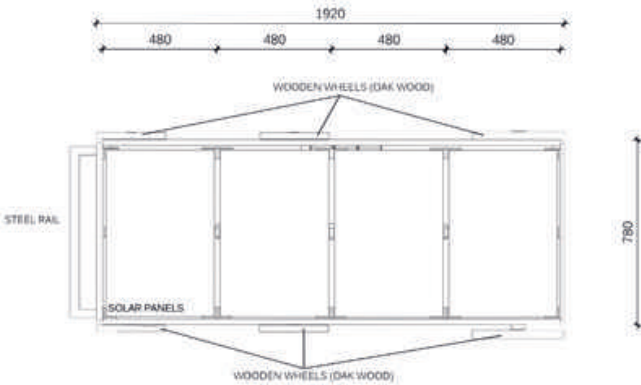
**BACK VIEW CLOSED**  
SCALE 1:25



**BACK VIEW OPEN**  
SCALE 1:25



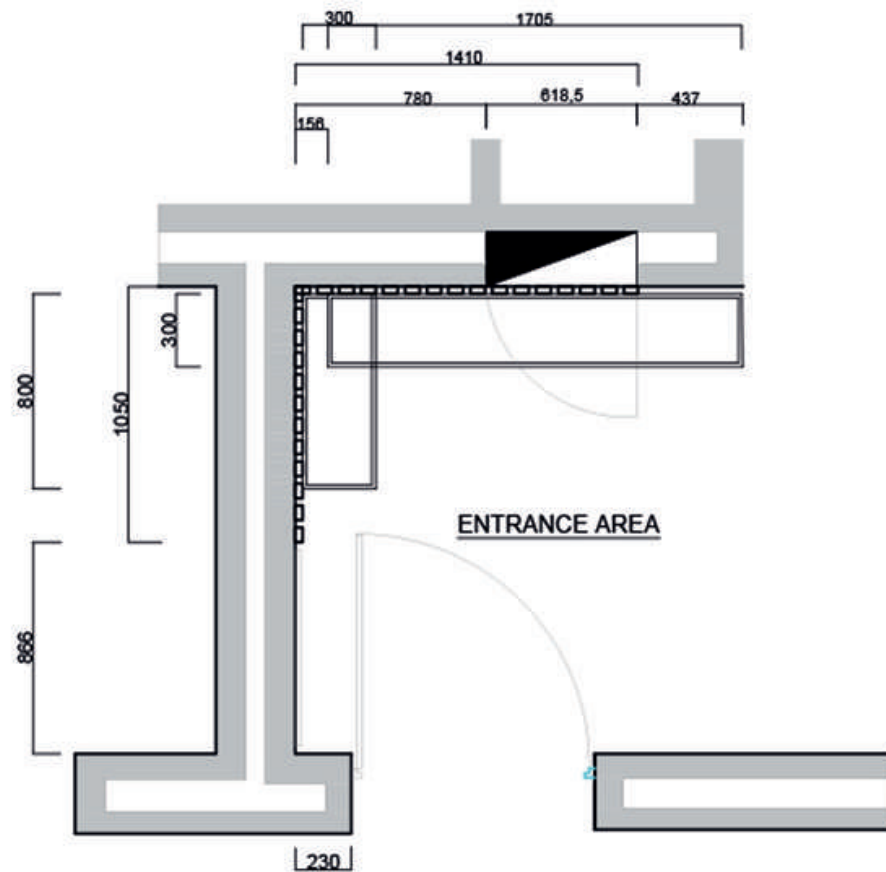
**TOP VIEW OPEN**  
SCALE 1:25



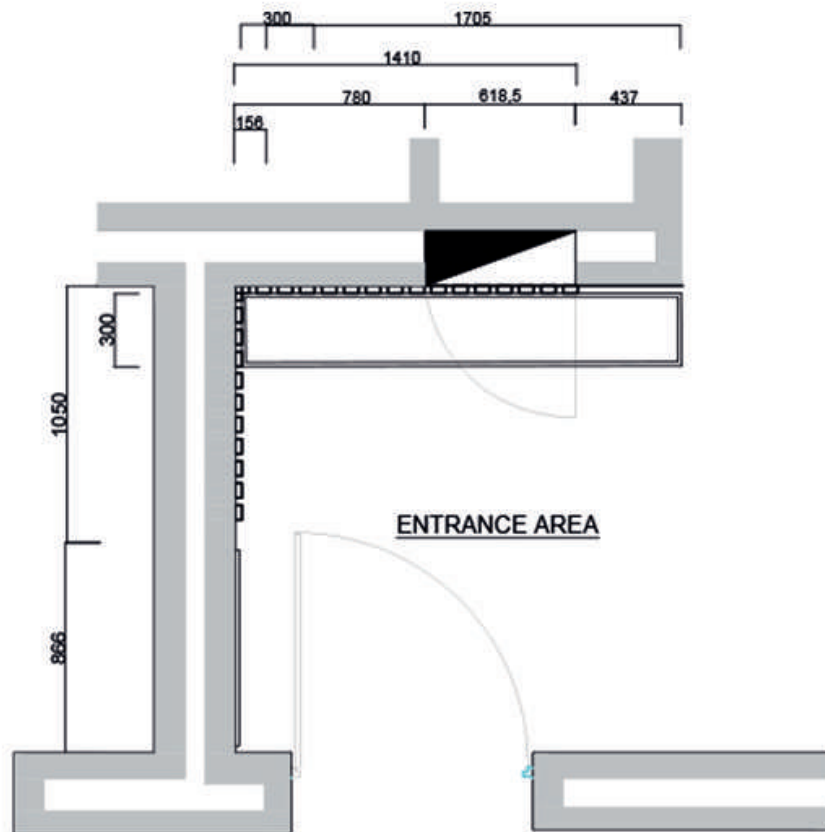
**TOP VIEW CLOSED**  
SCALE 1:25

# HOUSE ELLESMERE ENTRANCE

La Grange interiors was designing a house for a couple in Sea Point, Cape Town. This House fully designed needed special attention to the entrance as they were trying to hide a DV board and the electrical boxes as well as wifi router. They were over budget and couldn't afford to do something very expensive for this small space. I then designed a few different options, 2 being the finalists that they chose from and had Option 2 being the final design choice. This small entrance way complimented and set the tone of this very wooden and natural space with a stunning view of the sea.



OPTION 1  
SCALE nts



OPTION 2  
SCALE nts



OPTION 1



OPTION 2



# THE HAVEN ESCAPE

THE HAVEN ESCAPE, A SANCTUARY FOR COUPLES TO LEAVE THEIR WORRIES AND TROUBLES BEHIND. A SUSTAINABLE STRUCTURE, BASED ON BIOMYMICRY TO ALLOW THE FOREST AND SURROUNDING TO LIVE AND BREATHE ALONE AS IT HANGS AMONGST THE TREES LIKE A COCOON. HERE AT THE HAVEN ESCAPE WE AIM FOR YOU TO FEEL APART OF THE HUAY XAI FOREST BY HAVING A 360 DEGREE LOOKOUT VIEW AND ELEMENTS SUCH AS AN OPEN SHOWER, BALCONIES, SEATING AND WINDOWS TO MAKE YOU FEEL AT PEACE. HERE AT A THE HAVEN ESCAPE WE WILL TRANSPORT YOU INTO A WORLD OF YOUR OWN, A WORLD WHERE CONTACT TO THE OUTER WORLD DOES NOT EXIST. OUR WORLD IS MOVING AT SUCH A FAST PACE THAT PEOPLE FORGET TO “STOP AND SMELL THE ROSES”, SO HERE AMONGST THE FOREST IS YOUR TURN TO GO BACK IN TIME OR REACH FOR THE FUTURE WHERE PEOPLE REALISE WHAT IS IMPORTANT WHICH IS NOT MONEY, POWER OR MACHINES BUT QUALITY TIME WITH ONE ANOTHER AND THE WORLD. SO COME AND PAUSE AT OUR WONDERFUL HAVEN ESCAPE.





# Haven Escape







KITCHEN



RELAXATION POD



BEDROOM



BATHROOM



BATH



SHOWER

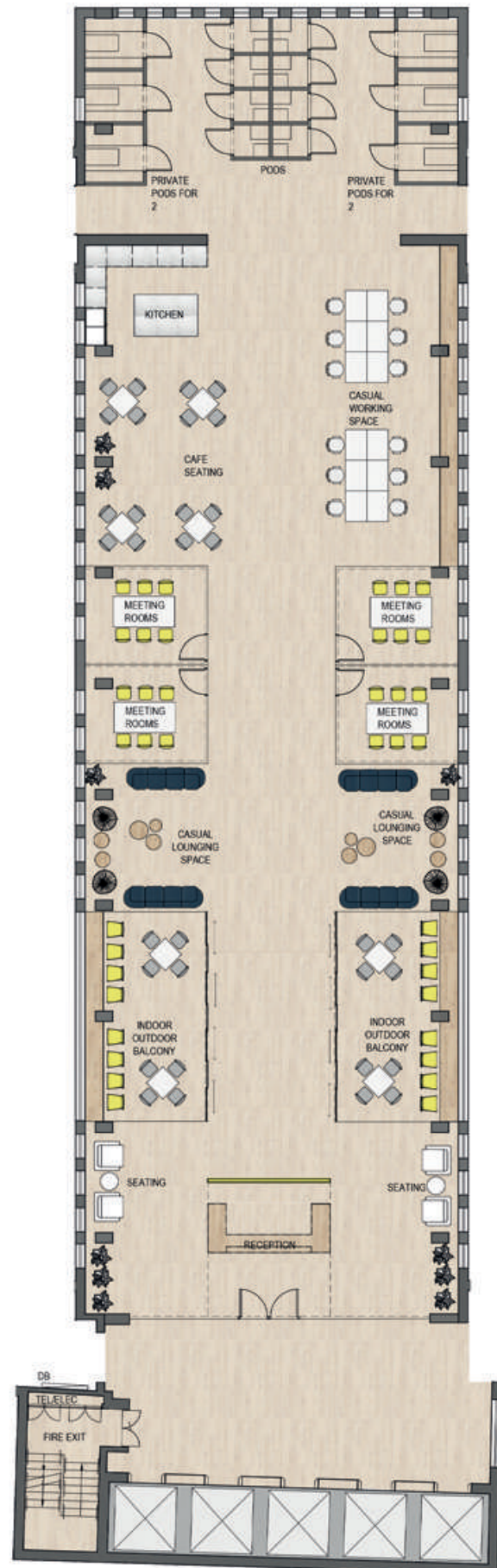


# GEOMETRIC

(AN OFFICE SPACE)

Using a bright and vibrant colour pallet to help motivate and encourage everyone in the offices this space has an open and collaborative style, encouraging creativity and inspiration with the environment around you. This office space is filled with light and lively furniture to bring life in a usually boring area, playing around with powder coated steel mesh to create a textural element as-well as keeping an open feeling with glass meeting rooms and open working spaces. This central office has a beautiful view of the atrium from both sides which is a beautiful green oasis created for you to step out into an “outdoor” area for a break or change in environment for work. Moving to the roof top which transports you into the world of Cape Town with a gorgeous view of the city a casual space for you to sit and enjoy some drinks. The Geometric building is the place that all office workers dream of being in because of its unique qualities and design elements.

WINNING FIRST PLACE



OFFICE PLAN  
SCALE nts





FIRST IMPRESSION RECEPTION AREA



INDOOR / OUTDOOR BALCONY



CASUAL WORKING SPACE



BOARD ROOM





KITCHEN / CAFETERIA

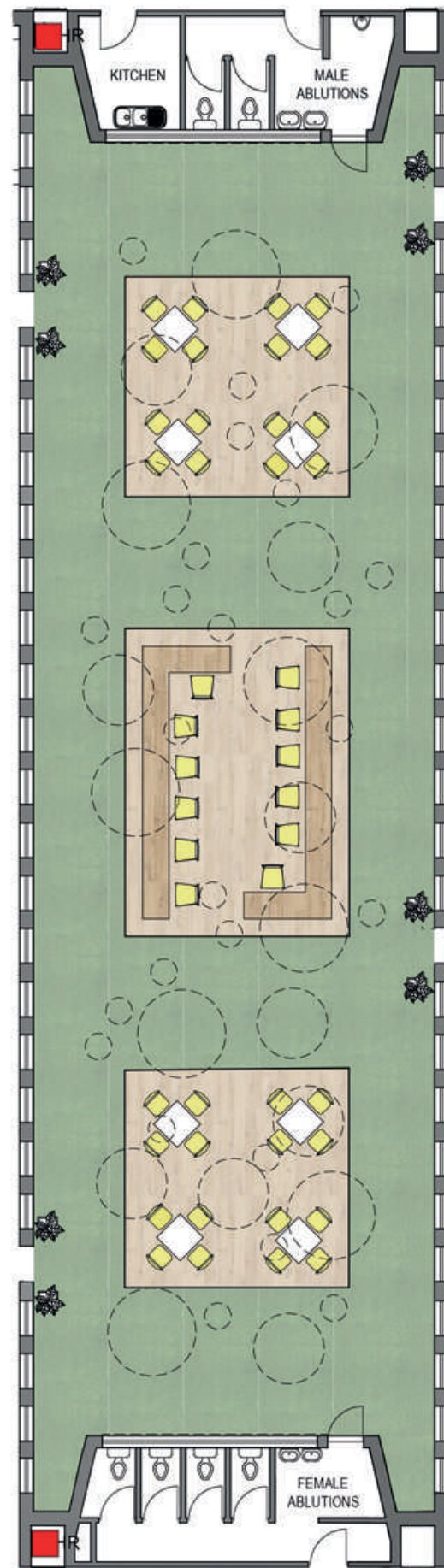


PRIVACY BOOTHS

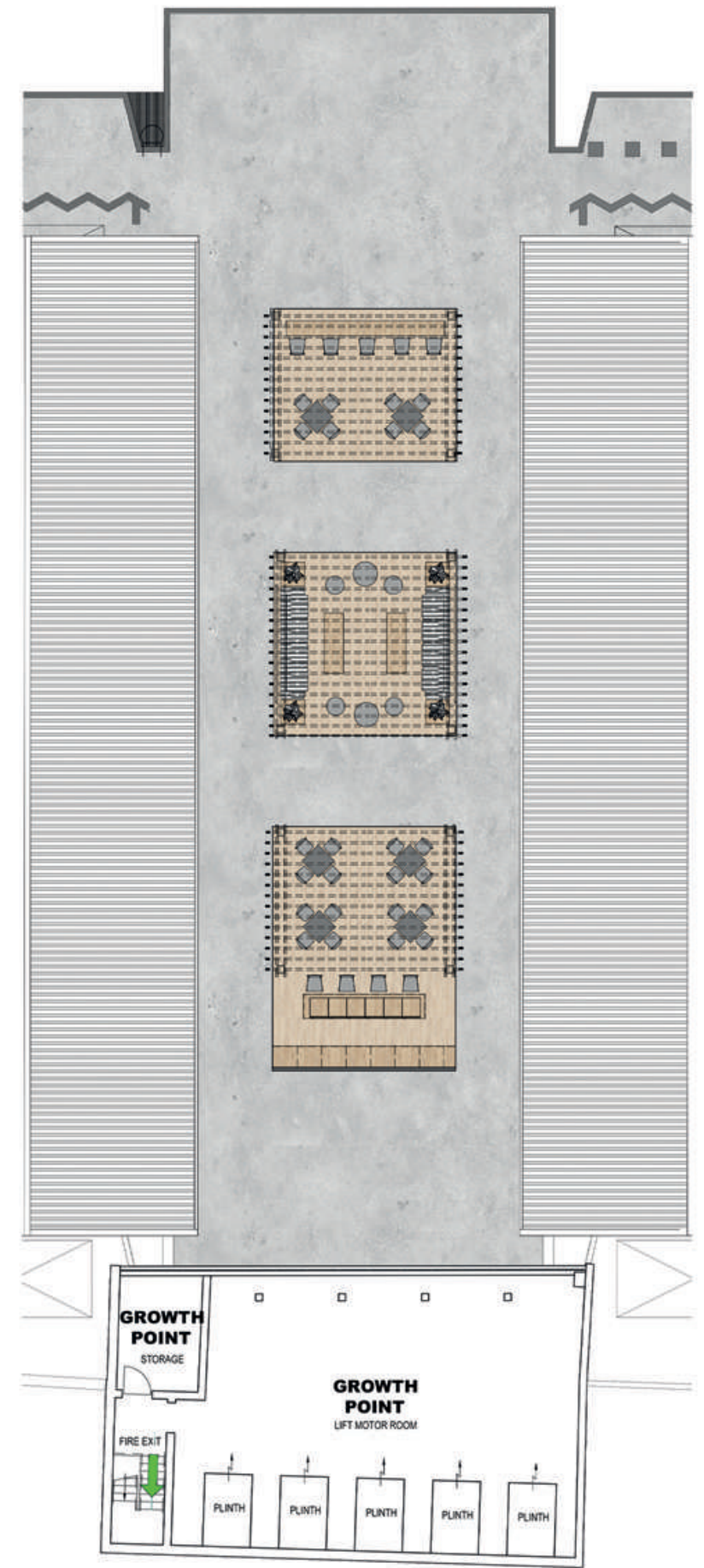


OPEN WORKING SPACE





ATRIUM PLAN  
SCALE nts

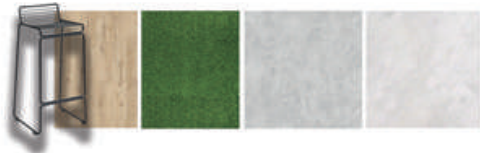


ROOF TOP  
SCALE nts



ATRIUM

A garden oasis used to calm and relax your mind and create an outdoor feeling even though you are inside a building in the middle of the city. This light weight laminate platform and minimal yet functional seating creates an open area for people to enjoy while working. The fake grass and beautiful hanging plants create a feeling of being in a forest which has a tranquil and comfortable relation and encourages a calm mindset.



PLANTERS  
 Inspired by nature's natural way for plants to receive water, this hanging planter receives water on its own from the roof that drips into the gutters and flows downwards towards the planters.  
 1. Water level indicator  
 2. Water supply shaft – allows water from drains and gutters to drip and be stored  
 3. Separator – stores the water and allows the plants roots to absorb the water  
 4. Drain plug





# ROOF TOP

An open and airy roof top bar area where people can come and enjoy the view of Cape Town as-well as socialize with co-workers and friends. This space has a very minimal and simplistic design, using natural wood and concrete finishes with black and white designs so that the main focus is the view around you.



## FURNISHINGS

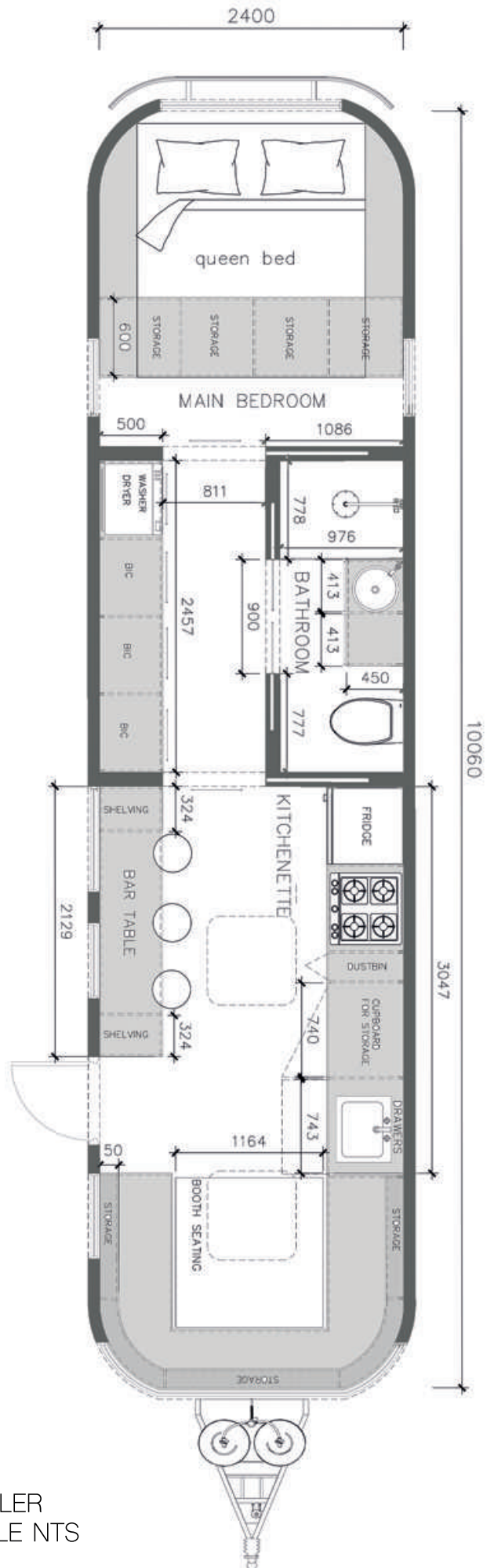
1. oak wood laminate flooring from top floors and carpets.
2. bristol outdoor lounge set from cielo.
3. iron railing
4. high tide deck resize from hertex
5. steel rod powder coated chair from chair crazy

# TRAILER

A traveling trailer designed with comfort and all necessities to suite your every need while you are travelling by road across the country.







TRAILER  
SCALE NTS

KITCHEN







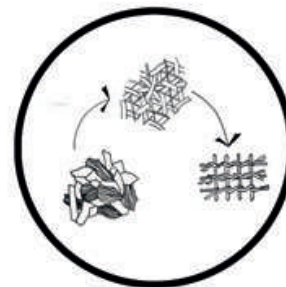
BEDROOM



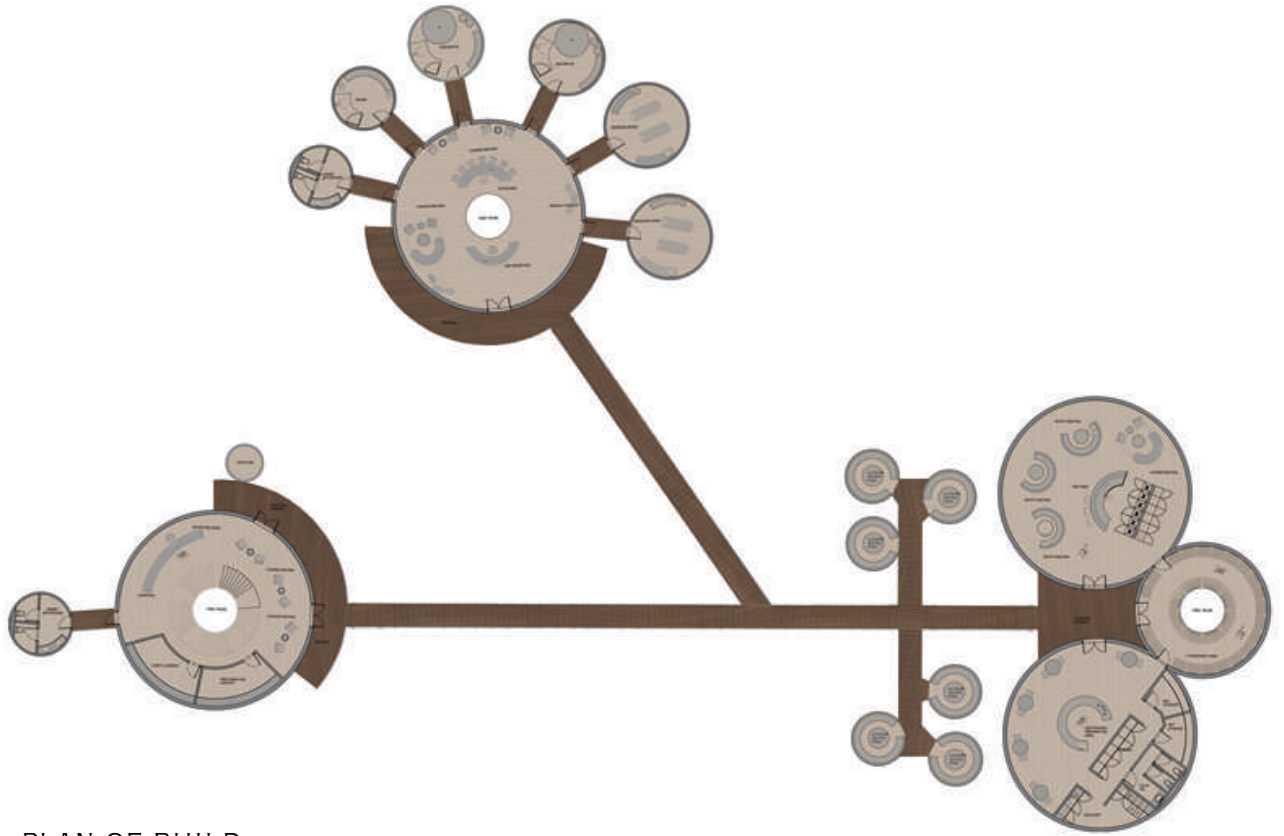
BATHROOM

# THE COTINGA SKY WALK

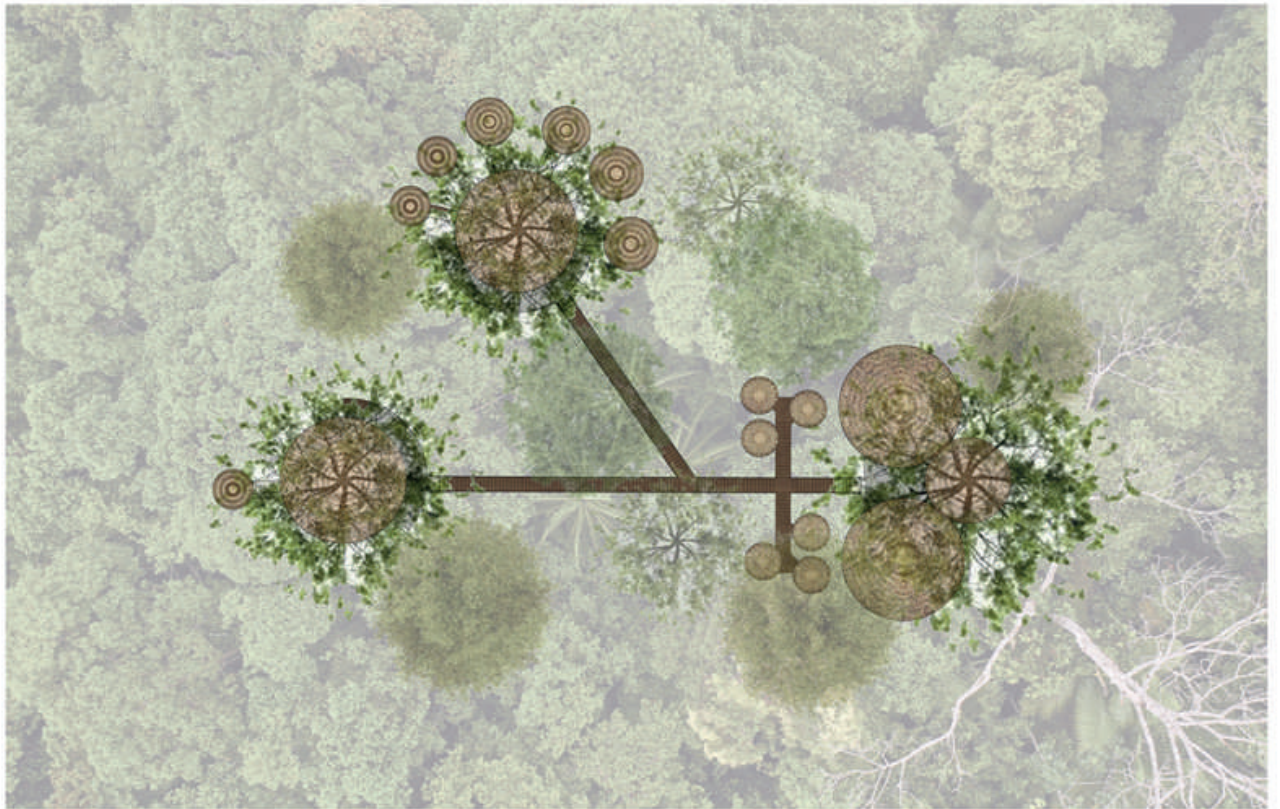
SUSPENDED IN THE LUSH TROPICAL SURROUNDINGS OF THE AMAZON RAIN FOREST IN BRAZIL, THE EXCLUSIVE COTINGA SKY WALK DAY RESORT AIMS TO NOT ONLY PROVIDE AN EXCITING, UNIQUE, AND PLAYFUL EXPERIENCE BUT ALSO PAYS HOMAGE TO THE EARTH. AS AREAS SUCH AS THE AMAZON ARE THREATENED BY LOGGING, MINING AND OTHER HUMAN ACTIVITIES, IT BECOMES IMPORTANT TO CELEBRATE THE EARTHS IMPORTANCE BY ENCOURAGING AND EDUCATING INDIVIDUALS ABOUT SUSTAINABLE ACTIVITIES. BY USING DIRECTOR-FRIENDLY, LOCALLY SOURCED MATERIALS, THE COTINGA SKY WALK AIMS TO HAVE A LOW IMPACT ON ITS SURROUNDING ENVIRONMENT. THE LIGHT WEIGHT BUILDING MAKES USE OF ELEMENTS SUCH AS BIOMIMICRY, MIMICKING THE SHAPES OF BIRDS NESTS PRESENT IN THE REGION. THE INTERIORS FEATURE A RANGE ON NATURAL MATERIALS INCLUDING THAT OF WARM TIMBERS, RAMMED EARTH WHICH ARE CONTRASTED WITH COOLER STONE ELEMENTS. THE COTINGA SKY WALK RESORT OFFERS TWELVE GUESTS THE OPPORTUNITY TO RELAX, AND PLAY IN ONE OF THE MOST IDYLLIC LOCATIONS IN THE WORLD, PROVING TO BE AN UNFORGETTABLE EXPERIENCE.







PLAN OF BUILD  
SCALE NTS



SITE PLAN  
SCALE NTS



## RECEPTION AREA

GUESTS ARE BROUGHT UP INTO THE AIR WITH OUR AMAZONIAN “ELEVATOR” OR THEY CAN ENJOY A JOURNEY UP THE MAGICAL SPIRAL STAIRCASE WHERE THEY ARE WELCOMED WITH OUR SIGNATURE APERITIFS. THE CAIPIRINHA COCKTAIL, PREPARED WITH CACHACA (SIMILAR TO RUM), LIME JUICE AND SUGAR. ALL LOCALLY SOURCED. GUESTS DISPERSE TO THE REST OF THE RETREAT VIA A SKY WALK IN THE MAGICAL TREE CANOPY OF THE AMAZON RAIN FOREST.







## BAR AREA

LOCAL BRAZILIAN ALCOHOL AND COCKTAILS ARE SERVED SUCH AS ALUA, PREPARED WITH MAIZE, RICE & SUGAR, ALSO KNOWN AS CORN WINE. BOMBEIRINHO, PREPARED WITH CACHACA & GOOSE-BERRY SYRUP. LIMONADA SUICA, PREPARED WITH LIME PIECES, ICE CUBES, SUGAR, WATER & A TYPE OF CONDENSED MILK.

GUESTS CAN ENJOY AND OUTDOOR HAPTIC EXPERIENCE AND COOL OFF FROM THE TROPICAL HEAT WITH A COCKTAIL IN THE SEATING PODS. HERE ONE IS SERVED BY SILENT DRONES AND TASTES THE REGIONAL FLAVOURS OF THE EARTH BELOW WHILE ENGULFED BY THE BEAUTIFUL SOUNDS,





# SPA RECEPTION

NUTRITIONAL BEVERAGES ARE SERVED AT THE SPA BAR, SUCH AS YERBA MATE (DRUNK LIKE COFFEE) FOR SKIN REJUVENATION. ALOE VERA DE-TOXIFY, HYDRATE AND HEAL SKIN AND INFUSED HERBAL WATERS AND TEAS. ONE IS ALSO GIVEN THE OPPORTUNITY TO PURCHASE CREAMS AND TREATMENTS FROM THE SMALL GIFT SHOP.







## COTINGA SPA

THE SPA SPECIALIZES IN LOCAL TREATMENTS SUCH AS A PURIFYING AMAZONIAN WHITE CLAY FACIAL AND BODY MASK. RED GRAPE MASKS FULL OF MINERALS, VITAMINS AND ANTIOXIDANTS. GARLIC TREATMENT FOR WEAK NAILS. PAPAYA, COCONUT OIL AND LEMON MASK FOR DARK SPOTS. FULL BODY MASSAGE, MUD BATHS AND A SAUNA ROOM.



# HYDROPONIC FARM

TWENTY-FIVE PERCENT OF THE WORLDS MEDICINAL DRUGS ARE SOURCED FROM PLANTS IN BRAZIL. SOME OF THESE HERBS, AMONGST OTHER FRESH PRODUCE ARE GROWN IN OUR HYDROPONIC POD. THIS ALLOWS THE KITCHEN EASY ACCESS TO LOCAL HERBS, ALLOWING GUESTS A TASTE OF THE REGION, ALONG WITH THE NUTRITIONAL BENEFITS OF THESE PLANTS. THE SUSPENDED GARDEN ALSO AVOIDS DISRUPTING THE NATURAL ECOSYSTEM BELOW.



## MATERIALS BOARD

1. TEAK WOODEN DECKING, 2. TEAK CUPBOARD FINISH, 3. LOOM ELIMINATION BASKETS AND STAND - NICOLE, TOMAZI, 4. ROUND DINING TABLE - JOSE ZANINE CALDAS, 5. COPPER FINISHES, 6. QUARTZ COUNTER TOPS, 7. PINE DECKING, 8. TEAK FINISH, 9. PINE FINISH, 10. QUARTZ COUTERTOP



# WHISKEY HOUSE

The Whiskey House, a bespoke whiskey store in the heart of Cape Town. Filled with copper interiors and clean designs to make the whiskey the main focus of the store. Having a unique experience by using the whiskey taps to taste and learn the differences between the whiskeys as well as how to identify the quality will transform the whole experience of just purchasing a bottle without knowing about it. Every bachelors dream to enter into this whiskey play ground, a guaranteed amazing experience by the Whiskey House.





# The Whiskey House



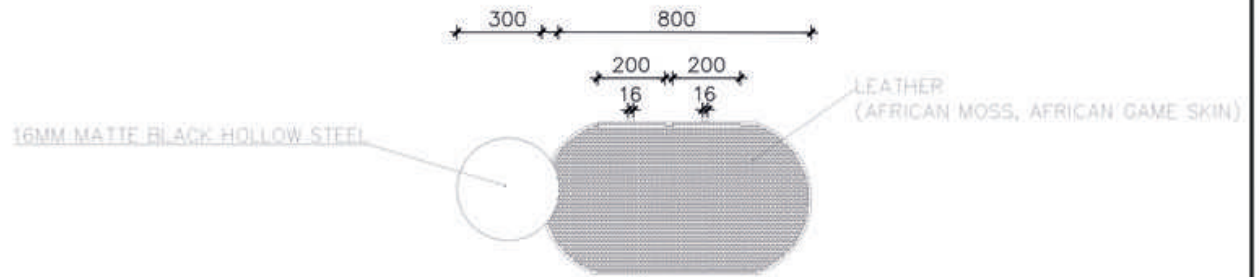
CHAIR DESIGN



IRON AND KHAKI LEATHER

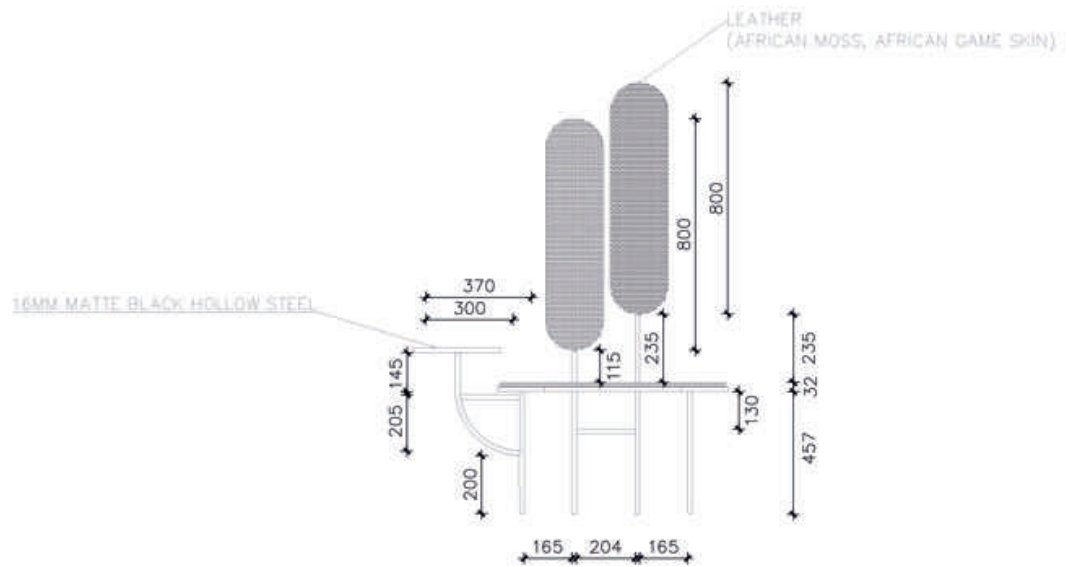


VIEW 1



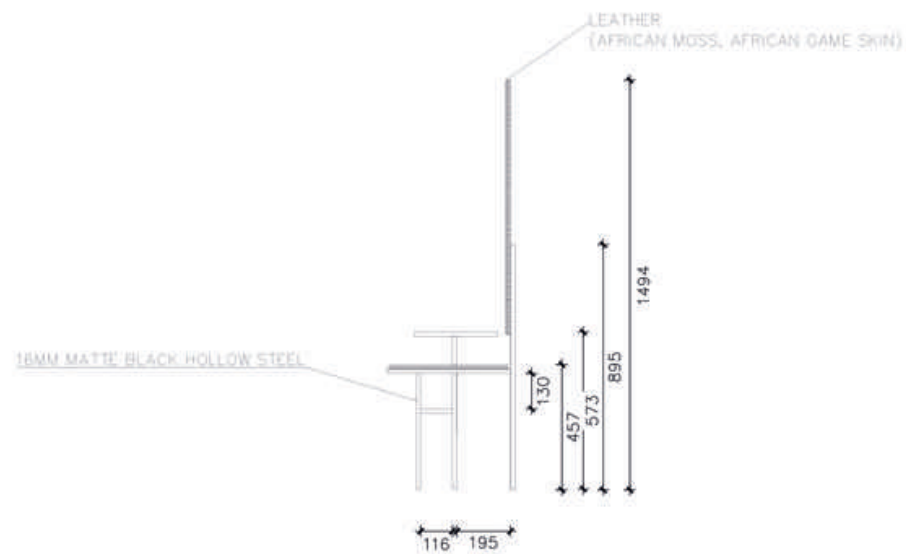
## PLAN

SCALE 1:20



## FRONT ELEVATION

SCALE 1:20



## SIDE ELEVATION

SCALE 1:20





IRON AND KHAKI LEATHER

# GRiik LOGO / PACKAGING DESIGN

A local Greek Restaurant in Zimbabwe was wanting to package products and distribute to supermarkets and local businesses to sell. They required a logo, and package design for such products. Creating a simple yet eye catching design that stands out on a shelf this is what i came up with and what was used.

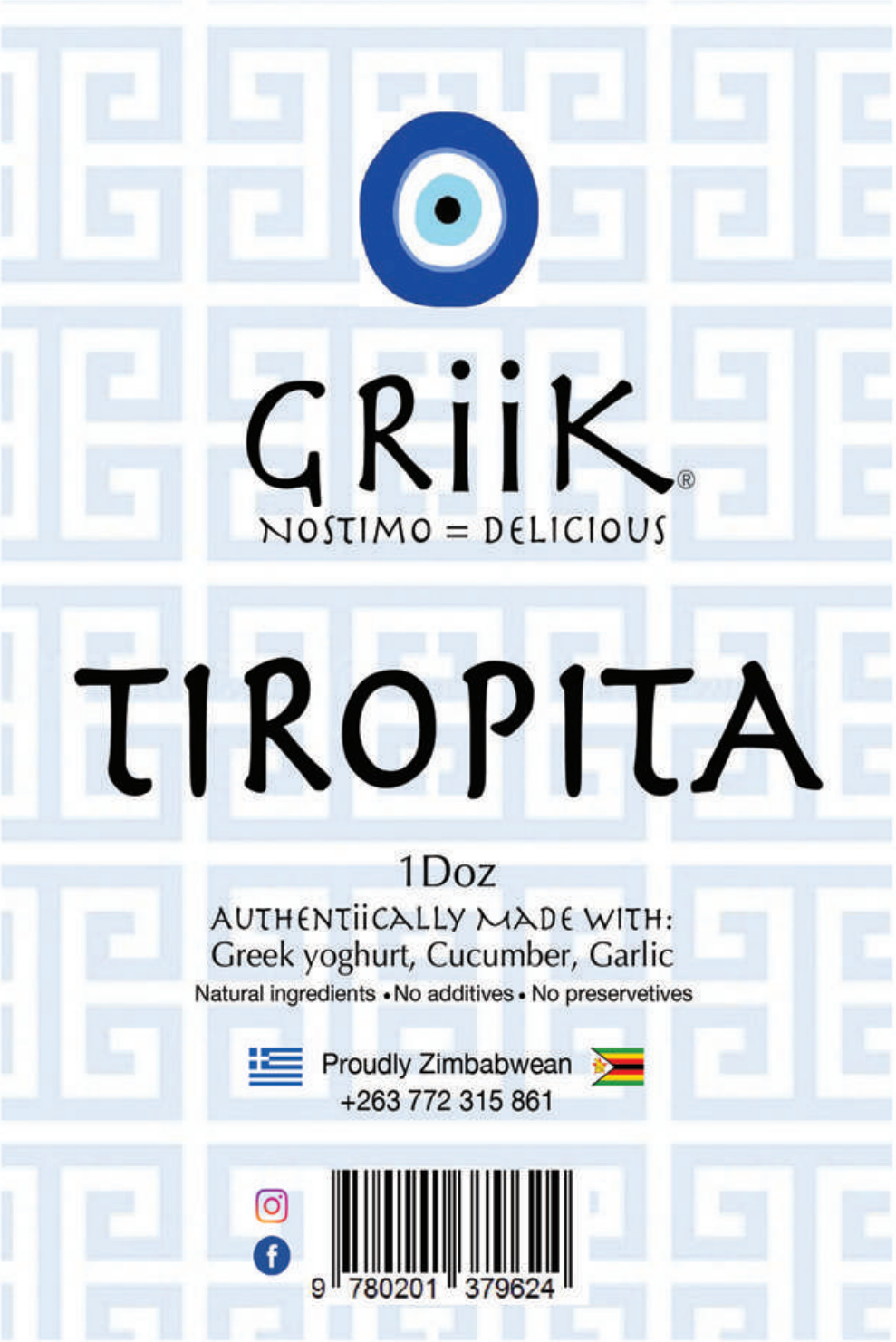






LOGO

A6 FROZEN PACKAGING DESIGN



LONG WRAP AROUND PACKAGING DESIGN



ROUND STICKER DESIGN







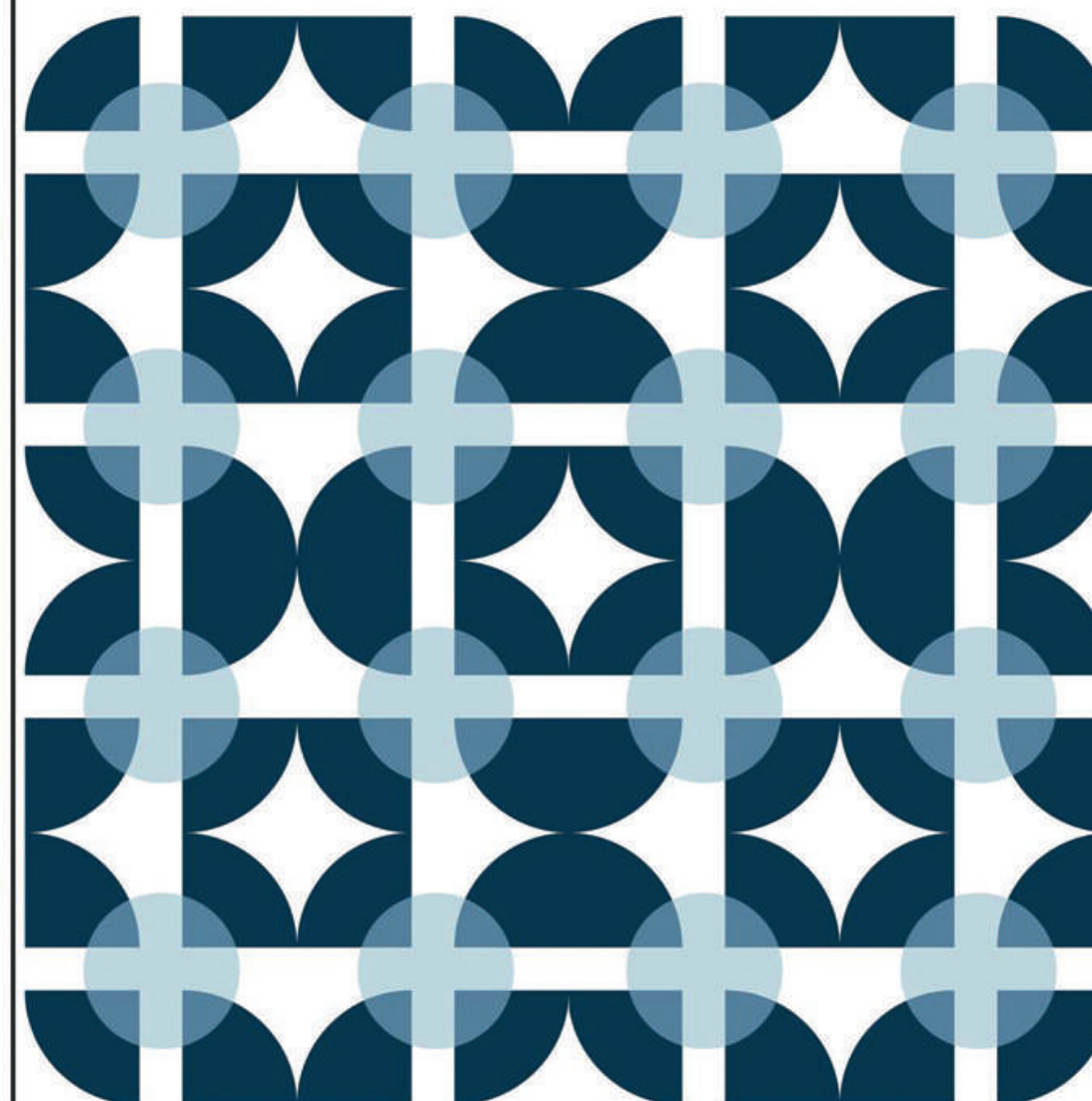


TEXTILES



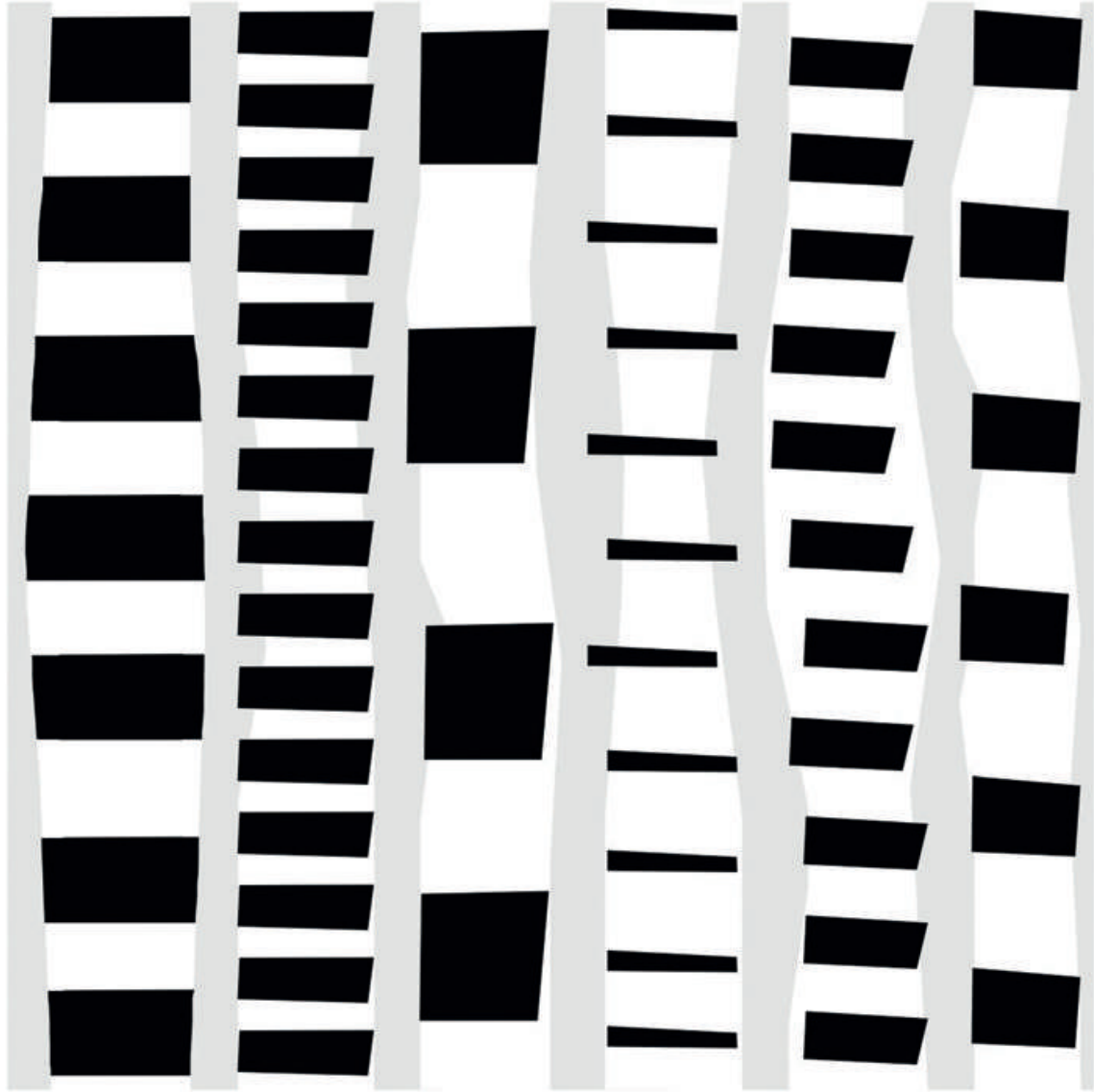


SINGLE

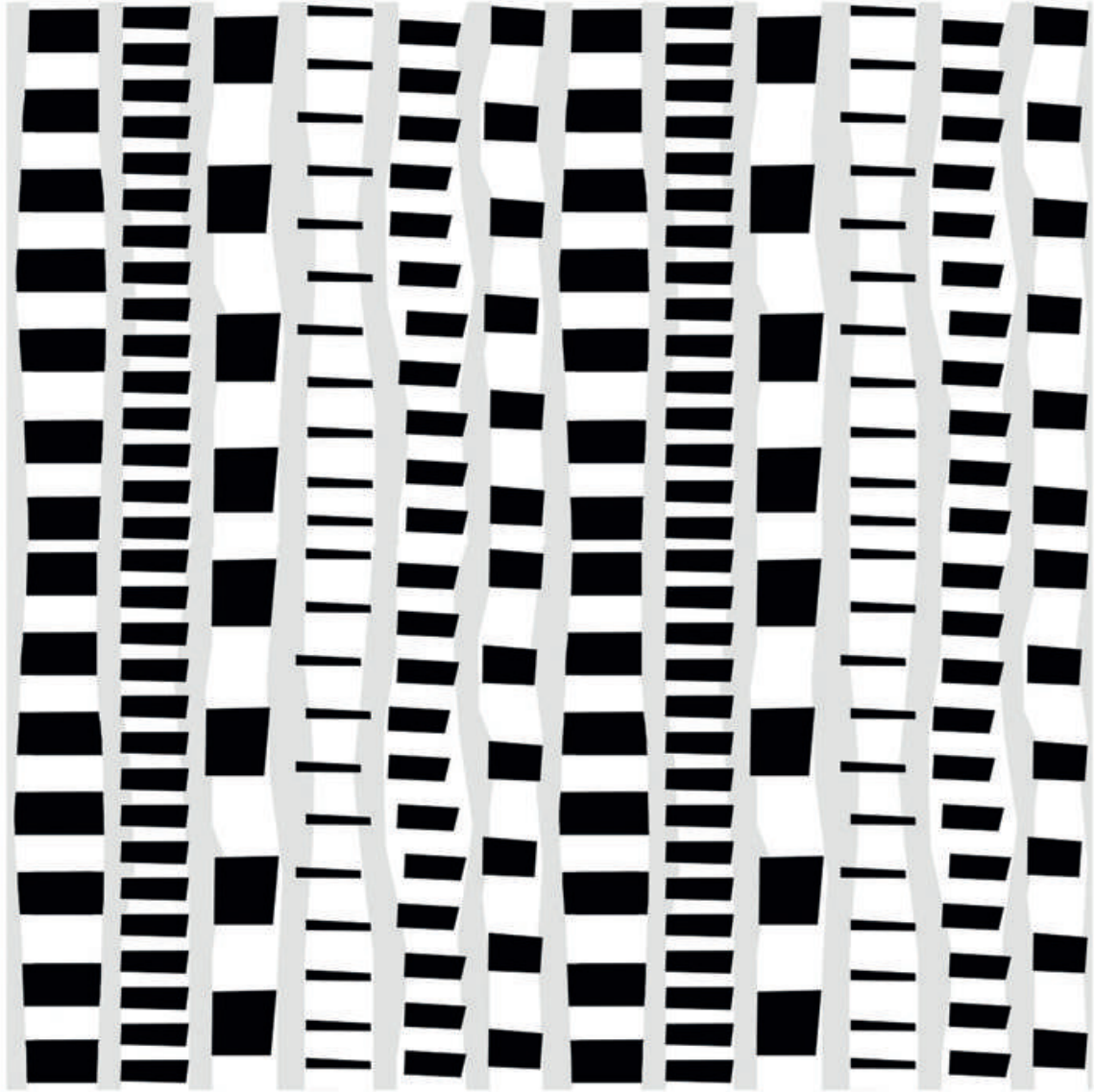


REPEAT

BLACK AND WHITE LINE



SINGLE



REPEAT



MAPS



SINGLE



REPEAT