

ABOUT



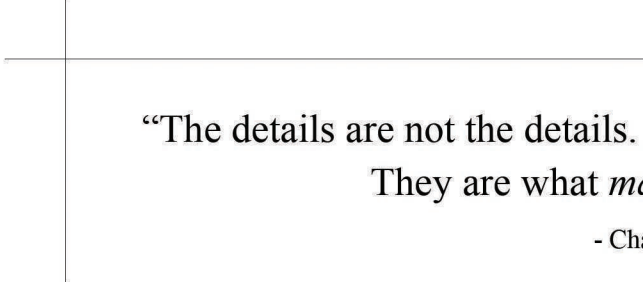
I am a dedicated professional who was born and raised in a small town in the Eastern Cape. Growing up in a diverse and culturally rich environment, I have had the privilege of experiencing and appreciating a wide range of cultures and traditions. This exposure has greatly contributed to my ability to understand and connect with people from all walks of life. The cultural richness of my upbringing has seamlessly blended with my passion for aesthetics, leading me on a path where I bring together my deep appreciation for diversity and my expertise in interior design to create spaces that resonate with people on a profound level. My lifelong fascination with art and design has been the driving force behind my journey into the field of interior design. I have always been drawn to the power of aesthetics and how they can transform spaces, evoke emotions, and enhance the quality of life. As an interior designer, I have channeled this passion into a fulfilling career where I specialize in curating beautiful and functional spaces that are not only visually appealing but also conducive to the well-being of those who inhabit them.



c.b.g



Carmen
Bridget
Gregan



“The details are not the details.
They are what *make* the design”

- Charles Eames





1. PG BISON | NATIONAL COMPETITION | 🏆 NATIONAL WINNING DESIGN | TOP MARK
2. CAESARSTONE | NATIONAL COMPETITION | 🏆 INHOUSE TOP 5 MARK
3. HOUSE GESS | RESIDENTIAL
4. BOXWOOD | RESIDENTIAL | 🏆 INHOUSE TOP 5
5. STAY UNIQUE | HOSPITALITY | 🏆 INHOUSE TOP 5
6. LUMINA | METAVERSE NIGHTCLUB
7. ON Q. | HOSPITALITY
8. FOREST FLUSH | RETAIL DESIGN
9. THE HARMONIOUS VASE | PRODUCT DESIGN
10. A SAILORS HEXAHEDRON | PRODUCT DESIGN | 🏆 TOP MARK
11. AN EDIBLE SECTION | SURFACE DESIGN | 🏆 INHOUSE TOP 5
12. THE WINCHESTER HOTEL | PHOTOGRPAHY
13. TECHNIQUELS

BRIEF

Design your clients dream desert oasis consisting of a luxury residence, with entertainment areas and landscaping.

Your design Proposal must celebrate the basic humans needs of:

- ~ Eating
- ~ Sleeping
- ~ Bathing
- ~ Socialising.

Using the four elements:

- ~ Fire
- ~ Water
- ~ Earth
- ~ Air

THE CHRONO

 NATIONAL WINNING DESIGN
TOP MARK

Inspired by the passage of time, the design juxtaposes humanity's environmental impact with nature's flourishing when undisturbed. The building's striking design employs a timeline motif, shaping diverse heights and lengths. This concept embodies gradual human-induced degradation versus the untamed allure of nature.

Lush terrariums parallel the structure, vibrant green against the desert's neutrality. These self-sustaining ecosystems thrive unaided, showcasing nature's resilience. Interiors seamlessly integrate stones and timbers, harmonizing with the desert.

A captivating water curtain traverses three floors, celebrating its beauty. The design emanates sophistication and serenity, crafting an inviting oasis. The name "Chrono" draws from the prefix's temporal connotations, encapsulating nature's pre-human essence within the terrariums.



Carmen Gregan
GRAND WINNER - Design Time School of Interior Design (CPT)

15XONEIGHT™

PG BISON

COMPETITION BOARD

THE CHRONO

Inspired by the passage of time, the design juxtaposes humanity's environmental impact with nature's flourishing when undisturbed. The building's striking design evokes a timeless world, shaping diverse heights and lengths. This concept embraces gradual human-induced degradation versus the untamed allure of nature. Lush terrariums parallel the structure, vibrant green against the desert's aridity. These self-sustaining ecosystems thrive amidst, showcasing nature's resilience. Interiors seamlessly integrate stone and timber, harmonizing with the desert. A captivating water curtain traverses three floors, celebrating its beauty. The design emanates sophistication and serenity, crafting an inviting oasis. The name "Chrono" draws from the prefix's temporal connotations, encapsulating nature's pre-human essence within the terrariums.

Combining time
in relation to time [from now]

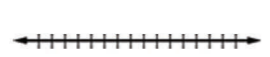


DIAGRAMS



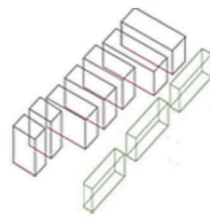
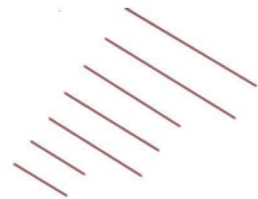
CONCEPT OF HUMANS DESTROYING THE PLANET OVER TIME AND NATURE THRIVING WHEN NOT DISTURBED BY HUMANS

→ THE TIMELINE OF HUMANS DESTROYING NATURE OVER TIME



RESEMBLES A SOUND WAVE

→ TAKEN INSPIRATION FROM THE DIFFERENT HEIGHTS



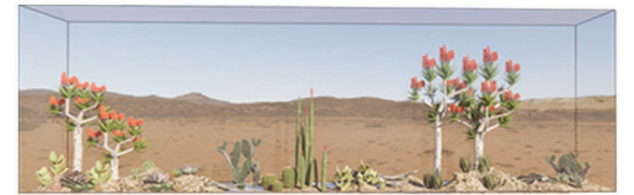
→ -USING THE DIFFERENT HEIGHTS AS INSPIRATION TO CREATE DIFFERENT HEIGHTS AND LENGTHS OF THE BUILDINGS.
-THE CONCEPT OF NATURE THRIVING WITHOUT HUMAN INTERFERENCE IS REPRESENTED BY CLOSED TERRARIUMS WHICH CREATES ITS OWN ECO-



SKETCH OF BEDROOM & BATHROOM SHOWING FLOW OF WATER CURTAIN

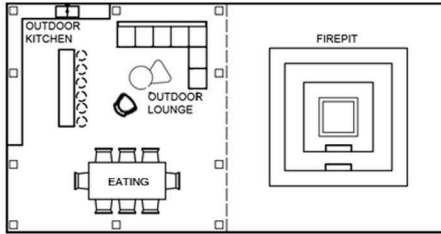
TERRARIUM ECOSYSTEM

Water goes in. 1. Roots absorb water through the soil. 2. Water treads up to the stems 3.

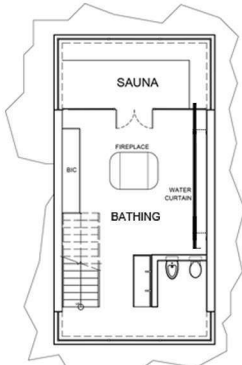


4. The water evaporates. 5. Condensation is made. 6. The process is repeated.

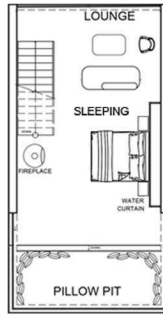
FLOOR PLANS



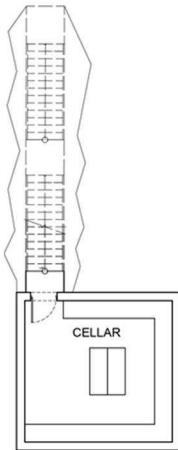
OUTSIDE AREA
SCALE: NTS



UNDERGROUND BATHING
SCALE: NTS

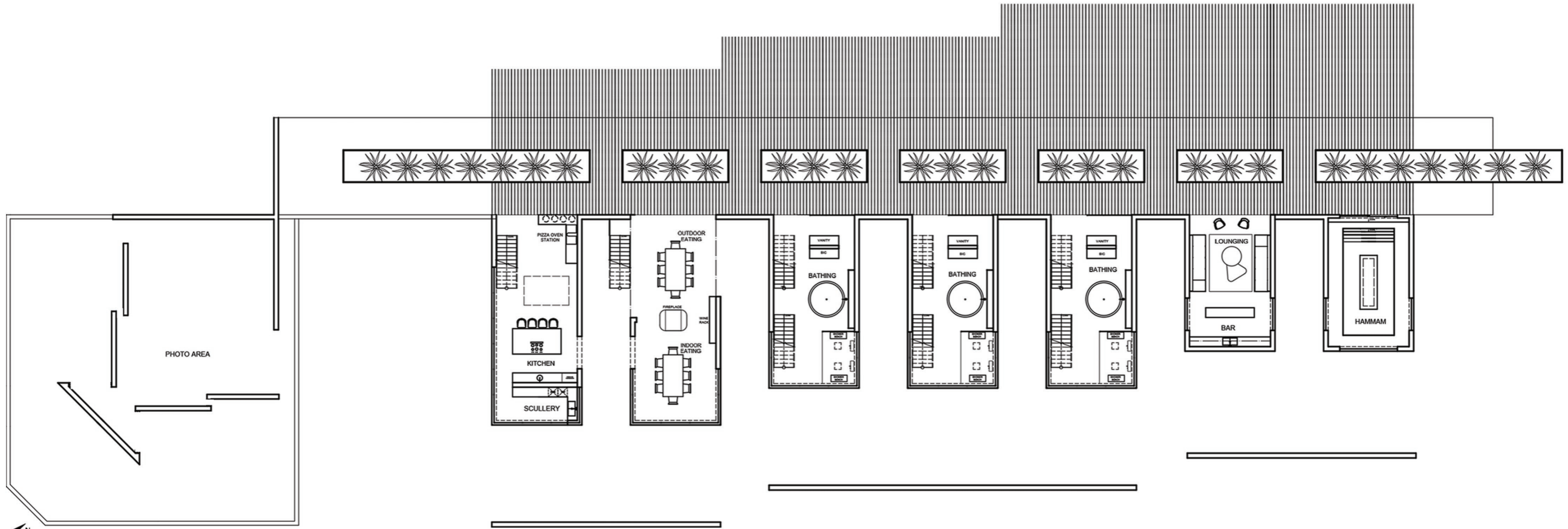


SLEEPING
SCALE: NTS



UNDERGROUND CELLAR & SOCIALISING
SCALE: NTS

FLOOR PLAN



GROUND FLOOR PLAN
SCALE: NTS



PADSTAL | SOCIALISING



TERRARIUM PASSAGE

SUPAGLOSS | AMERICAN WALNUT



EATING

SUPAMATI | SUPER BLACK



SLEEPING

SUPAGLOSS | SUPER BLACK



 BATHING

SUPAGLOSS | SUPER BLACK



BASEMENT | BATHING

SUPAMATI | SUPER BLACK



LOUNGING



HAMMAM | BATHING

SUPAMATT | KALAPANA



EXTERIOR SOCIALISING



BRIEF

Student designers are invited by Cape Town 2040 and Our Future Cities to create a conceptual and functional design for a sports centre located in Nantes Park. The sports centre will function as a clubhouse for all the current and upcoming urban sports facilities in the park.

LANGUAGE

 INHOUSE TOP 5 MARK

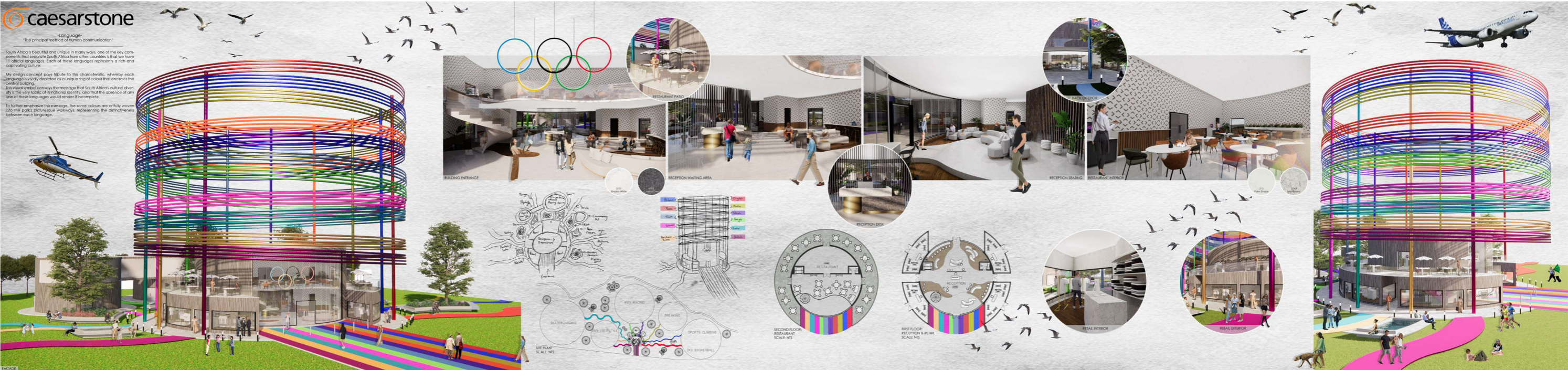
South Africa is beautiful and unique in many ways, one of the key components that separate South Africa from other countries is that we have 11 official languages. Each of these languages have their own rich and captivating culture.

My design concept pays tribute to this characteristic, whereby each language is vividly depicted as a unique ring of colour that encircles the central building.

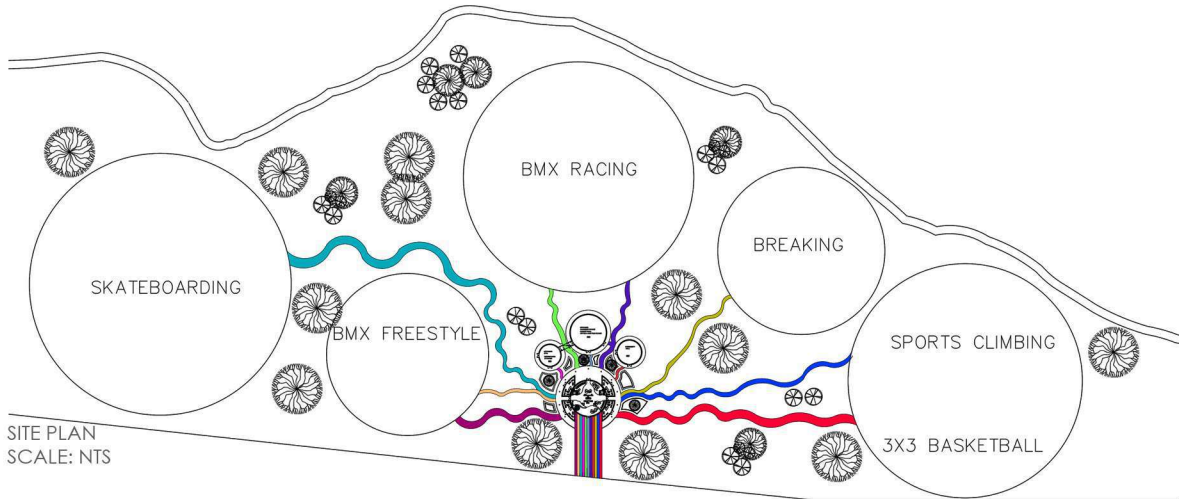
This visual symbol conveys the message that South Africa's cultural diversity is the very fabric of its national identity, and that the absence of any one of these languages would render it incomplete.

To further emphasize this message, the same colours are artfully woven into the park's picturesque walkways, representing the distinctiveness between each language.

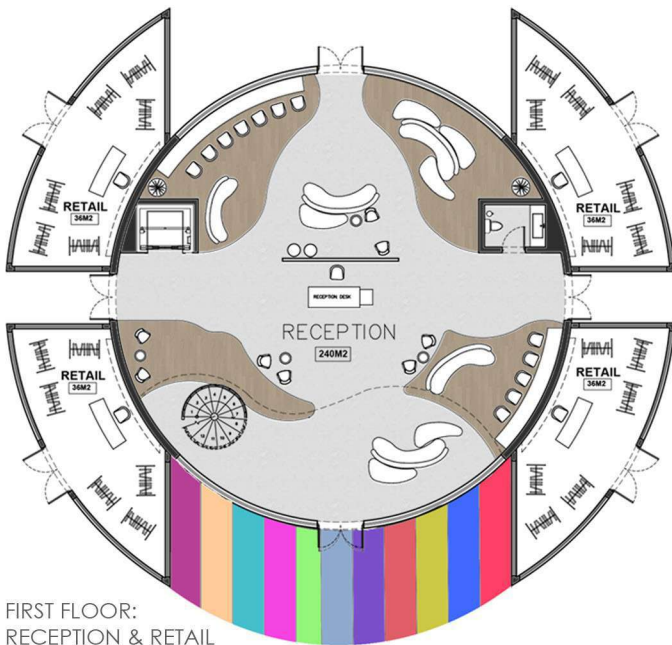
COMPETITION BOARD



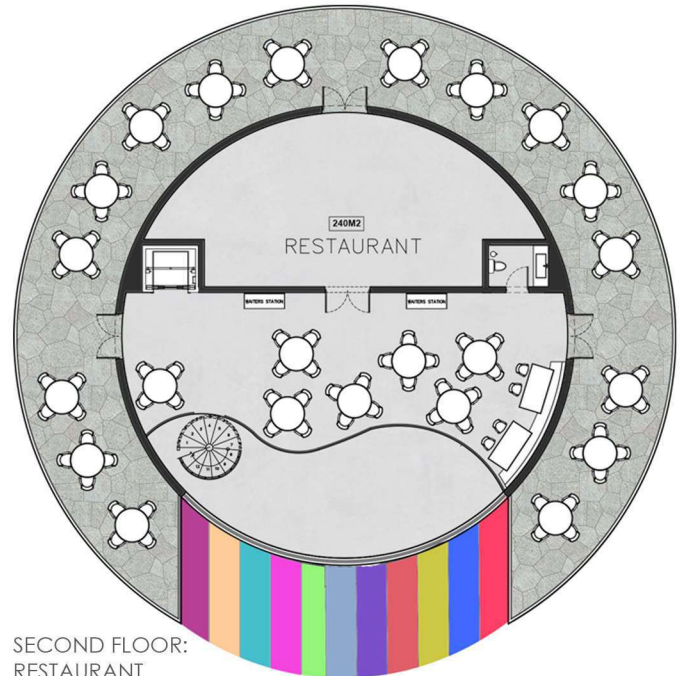
FLOOR PLANS



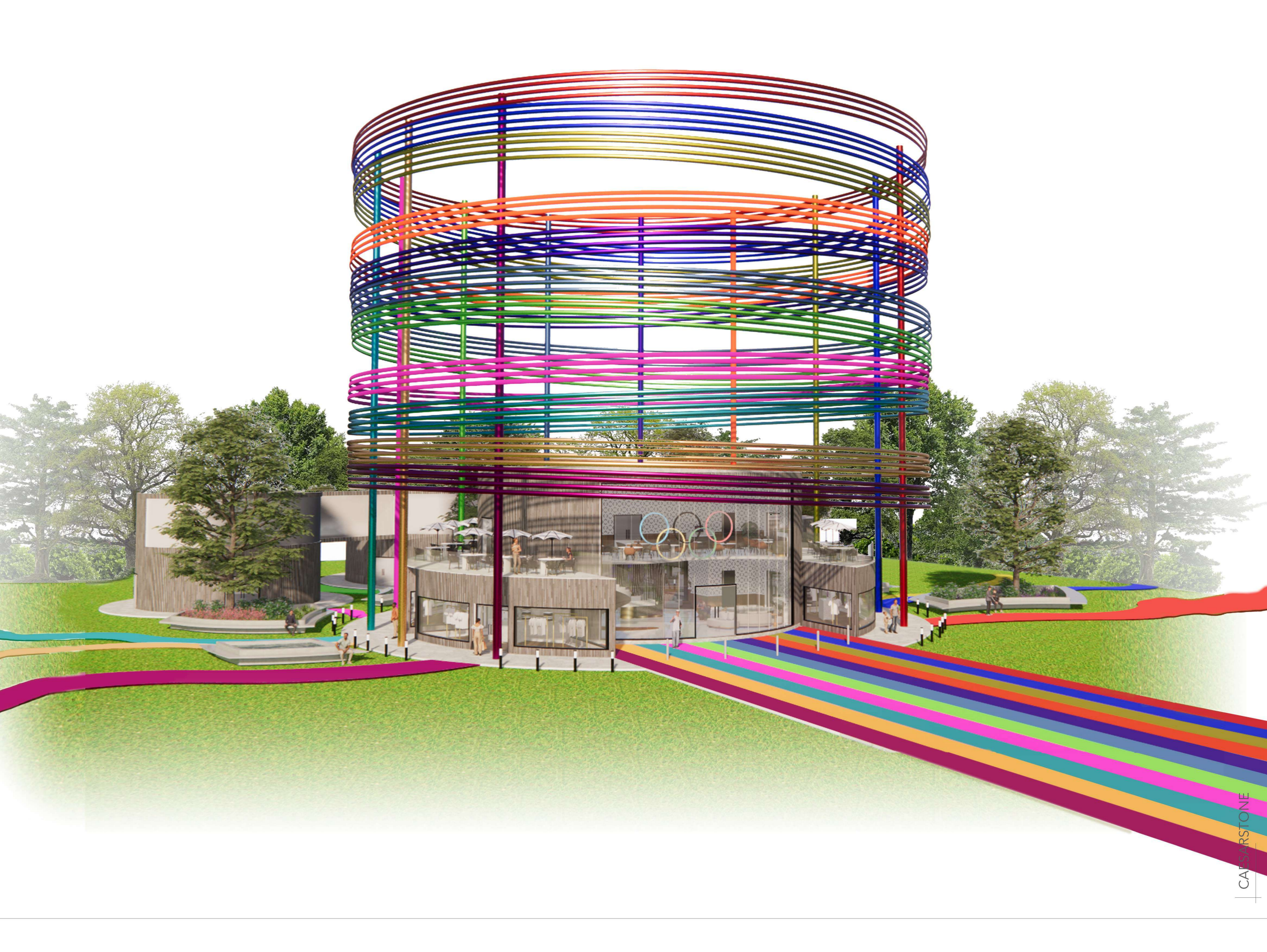
SITE PLAN
SCALE: NTS



FIRST FLOOR:
RECEPTION & RETAIL
SCALE: NTS



SECOND FLOOR:
RESTAURANT
SCALE: NTS





BUILDING ENTRANCE



RECEPTION SEATING

BRIEF

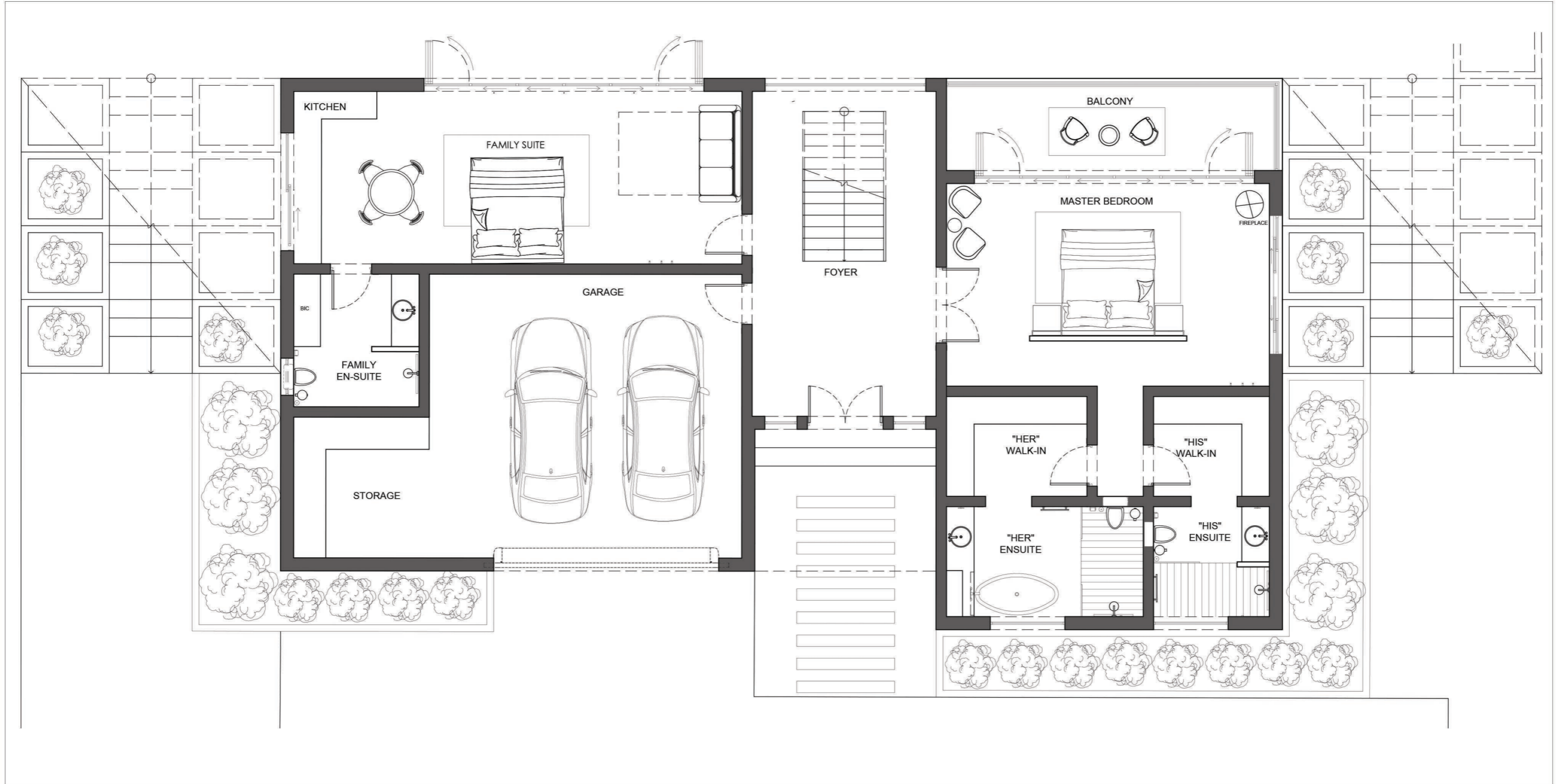
Design Time has been approached by a new client, Kim Gess from Knysna. She has recently bought a plot in Fernwood Private Estate and has asked you to design her new home. Your task is to design both the exterior and interior of the clients new home, keeping the architectural guidelines of the estate and the clients preferred look and feel in mind

HOUSE GESS

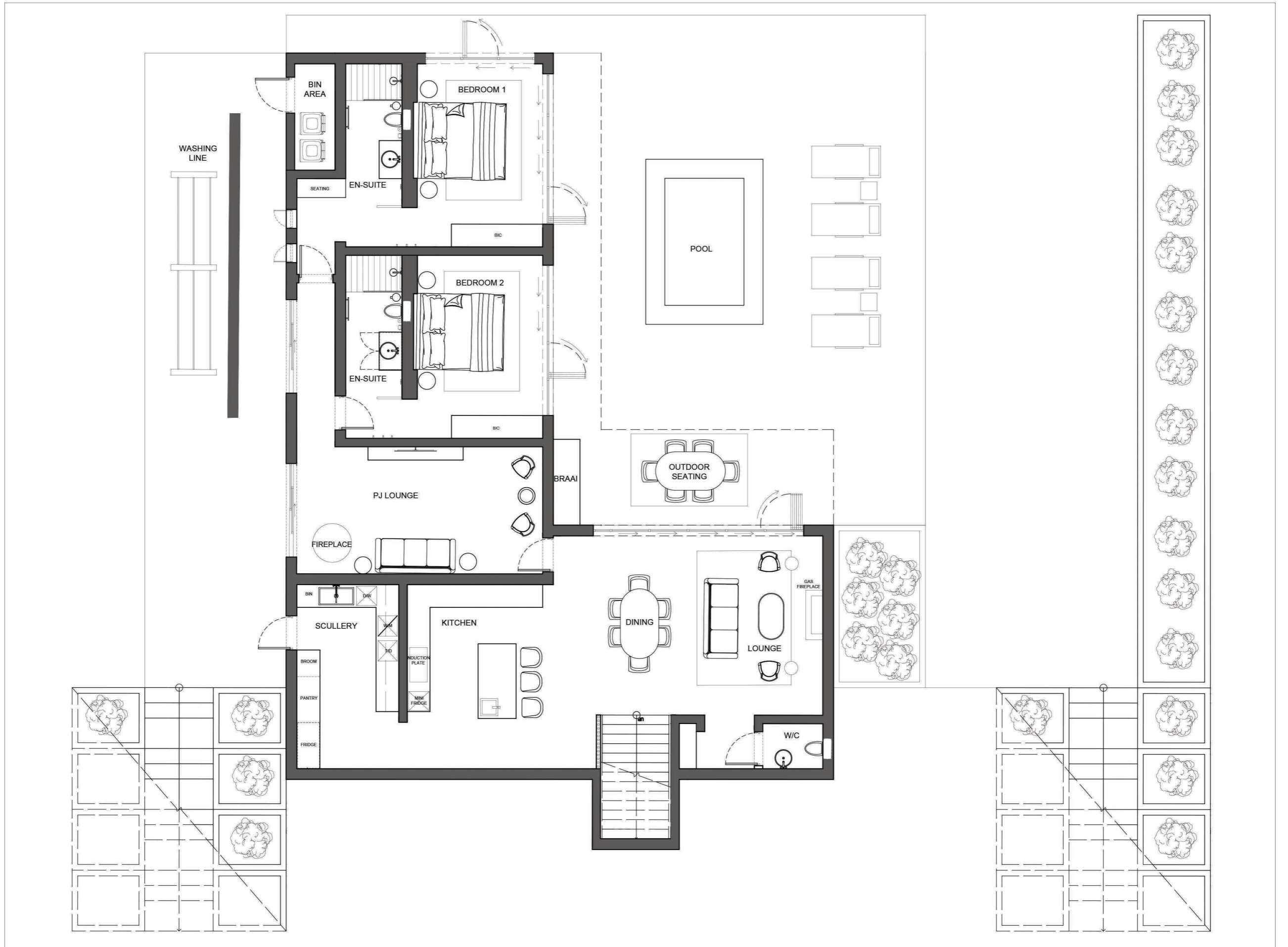
This design effortlessly blends modern aesthetics with classical charm, epitomizing timeless elegance through meticulous details like wall moulding and enduring materials such as marble and granite. This harmonious fusion creates a visually captivating and functionally efficient living space, where the synergy of contemporary design and classical elements tells a story of refined taste and enduring sophistication. Welcome to a residence where tradition meets innovation in a concise celebration of enduring style.



MASTER BEDROOM



HOUSE GESS
 UPPER LEVEL
 SCALE: NTS



HOUSE GESS
 LOWER LEVEL
 SCALE: NTS



FRONT EXTERIOR





"HER" BATH



"HIS" BATH





KITCHEN



KITCHEN ISLAND



LOUNGE



LOUNGE

BRIEF

You are required to create a design scope for the city block fronting Strand, Loop, and Bree Street. Think residential conversion, new offices, campus, hotel, hostel, etc.

Consider the following:

1. The greater CBD:
 - What does it need?
 - Who lives there?
 - Who is the target market?
2. Parking requirements – assume 5 floors of parking will be added.

THE MEADOW

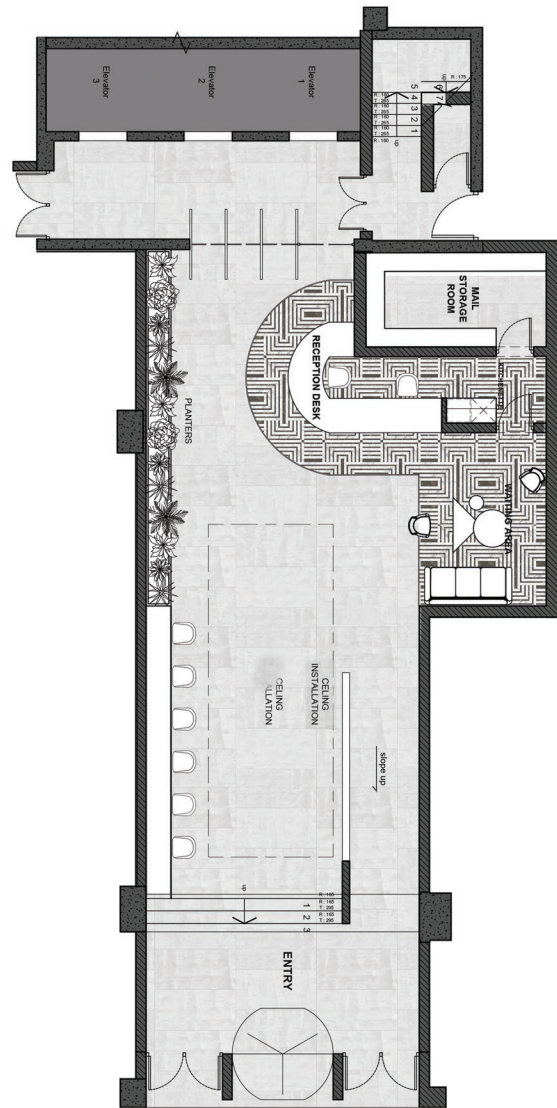
 INHOUSE TOP 5

Meadow bloom a luxury apartment building has been designed to bring nature into the center of the city. The facade of the building mimics the roots of a tree and are encasing the building showcasing the impact this building will have on the city. As you walk into the building a beautiful greenery and lighting installation hangs overhead paired with the natural finishes used it truly transports you out of the city into a meadow in full bloom.

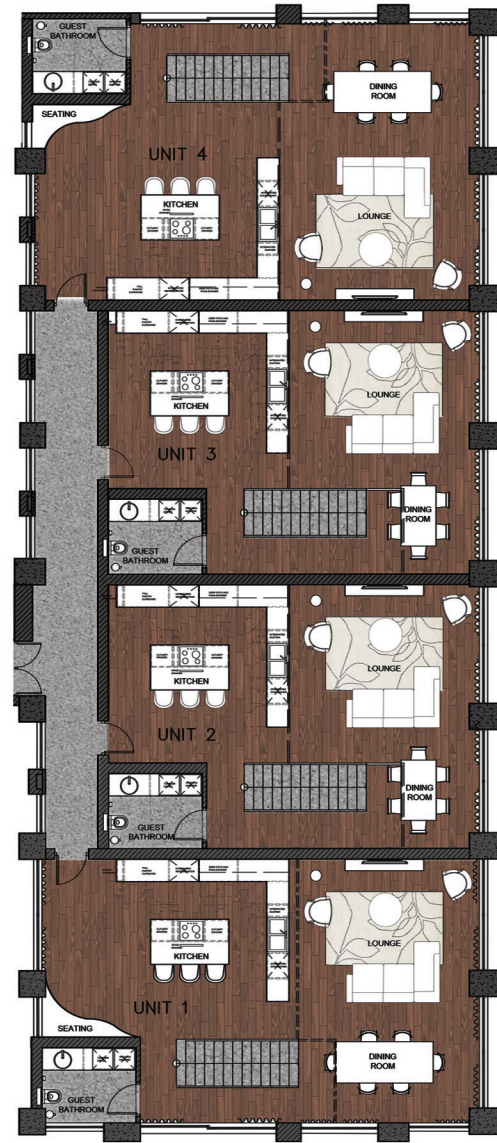
Meadow Bloom is a luxury apartment building. The standard units are extremely spacious and are perfect for a young professional. However the luxury is found on the 12th and 13th floor where the units have been converted to 4 luxury loft apartments.

The magic of this building is found on the rooftop garden, exclusive to tenants, which includes local plants, a large pond, braai areas and a conservatory with comfortable seating and a self catering bar.

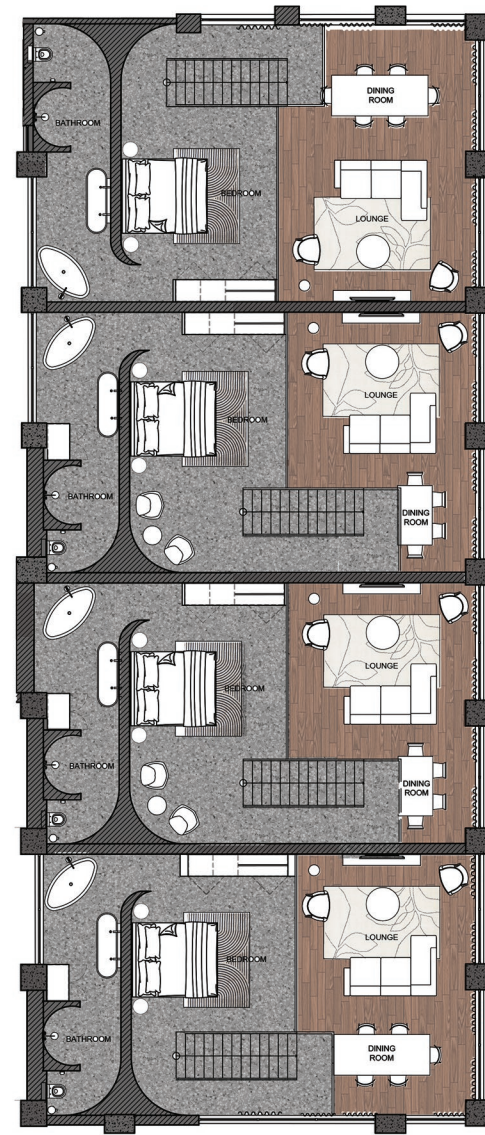
FLOOR PLANS



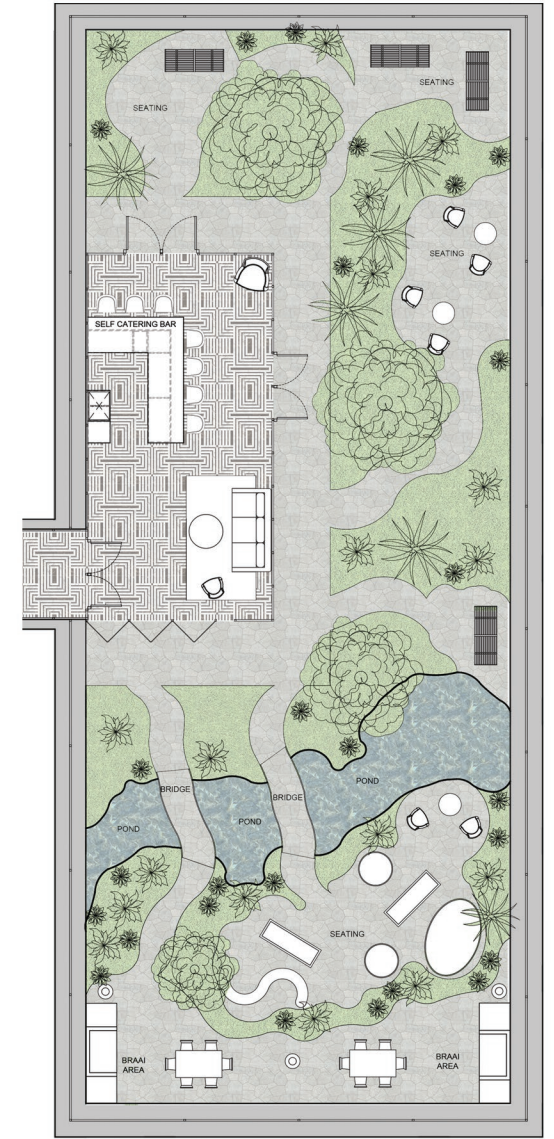
LOBBY
SCALE: NTS



DELUXE UNIT | LOWER LEVEL
SCALE: NTS



DELUXE UNIT | UPPER LEVEL
SCALE: NTS



ROOFTOP GARDEN
SCALE: NTS



LOBBY | ENTRANCE



LOBBY | WAITING ROOM



ROOFTOP | BAR



ROOFTOP | GARDEN



ROOFTOP | GARDEN



BRIEF

Stay Unique is excited to receive innovative and creative design concepts from Design Time students that will elevate the brand and create a unique and fresh brand image. Stay Unique is aiming to stand out in the Eco cabin/accommodation category, making design one of several unique selling points as the business grows and develops in the future. Your teams challenge is to curate a design influenced by the natural surroundings resulting in a style that is timeless and premium in aesthetic.

HAWEQWA NATURE RESERVE

IN COLLABORATION WITH MARLET VAN ZIJL

 INHOUSE TOP 5

Discover the breathtaking beauty of Haweqwa Nature Reserve as it winds through mountains, valleys, and rivers adorned with dramatic waterfalls. Just a two-hour drive from Cape Town, this accessible destination offers stunning mountain views, invigorating swimming opportunities in amber pools, and cozy winter relaxation by the fireplace. Our Stay Unique Eco Cabin, located beside a peaceful river, draws inspiration from the surrounding Cape Granite, amber waters, and vibrant Fynbos tones, ensuring a calming and immersive experience. Embark on an unforgettable journey in the heart of nature at Haweqwa Nature Reserve.



ELEVATIONS



STAY UNIQUE ECO-CABIN
ELEVATION A
SCALE: NTS



STAY UNIQUE ECO-CABIN
ELEVATION B
SCALE: NTS

FLOOR PLANS



STAY UNIQUE ECO-CABIN
FLOOR PLAN
SCALE: NTS



EXTERIOR



KITCHEN



FIREPLACE



LOUNGE



BEDROOM



BATHROOM



EXTERIOR

BRIEF

In collaboration with your group create an adult nightclub within the Metaverse. This project is aimed to challenge you to infuse traditional design principles with new technology. In The Metaverse physics is not a concern, play with this, there are no limitations to what you wish to design.

LUMINA

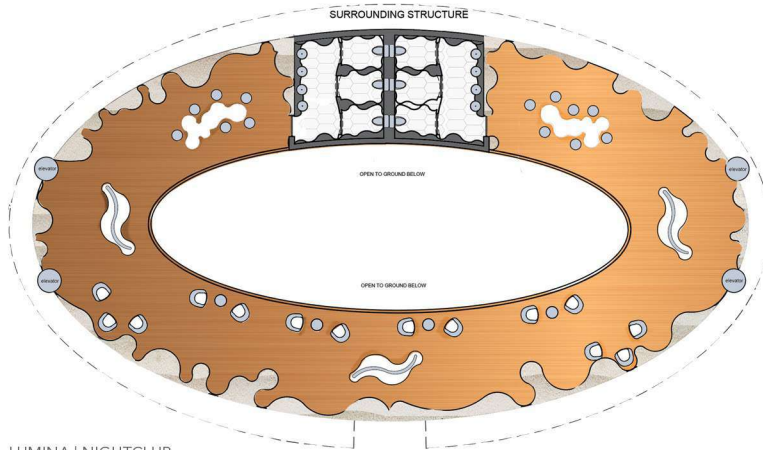
GROUP LEADER

IN COLLABORATION WITH KAYLEIGH CROUSEN
PRIYANKA VERMA
RENATE MATTHEE

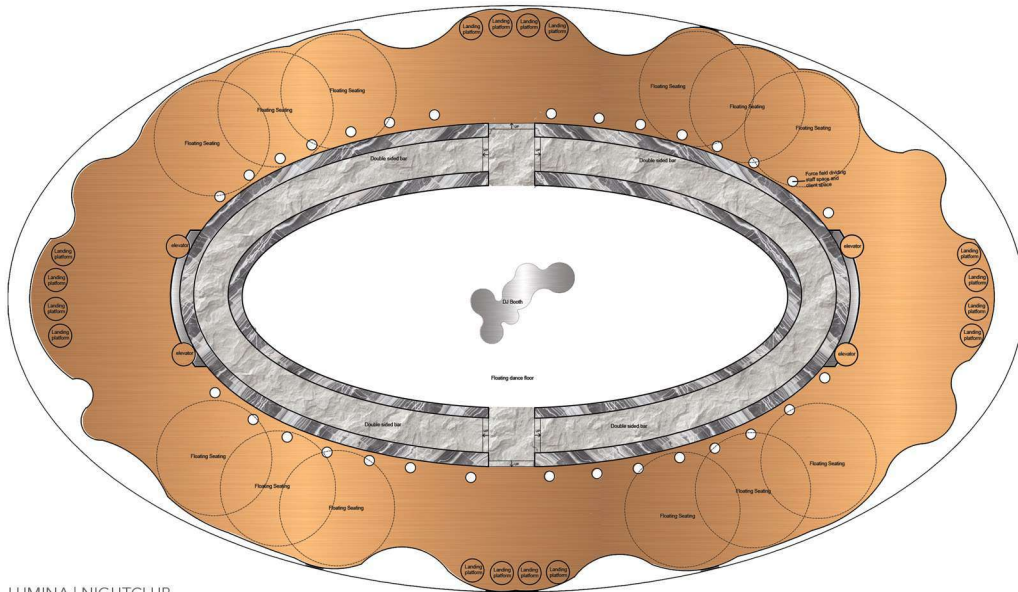
Embark on a one-of-a-kind nightlife adventure at Lumina Night Club, where the ethereal beauty of floating hot air balloons comes to life in our unique pod design. The entire club is a mesmerizing journey through pods that gracefully float above the ground, each encapsulating a distinct atmosphere. The central pod, suspended like the largest balloon, houses our lively dance floor and expansive bar. VIP pods offer exclusive experiences. Dynamic lighting enhances the feeling of drifting through the night sky, creating an immersive experience that transcends the ordinary. Lumina Night Club invites you to soar into the night, where the magic of floating pods meets the pulse of an unforgettable evening.



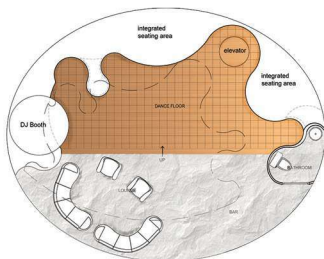
FLOOR PLANS



LUMINA | NIGHTCLUB
SLOW LOUNGE
SCALE: NTS



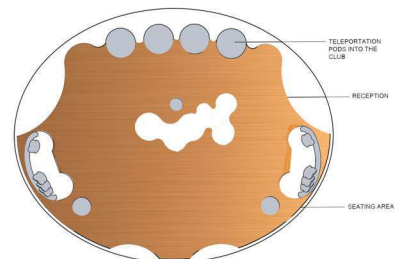
LUMINA | NIGHTCLUB
MAIN DANCE FLOOR
SCALE: NTS



LUMINA | NIGHTCLUB
VIP | DANCE FLOOR
SCALE: NTS



LUMINA | NIGHTCLUB
VIP | SLOW LOUNGE
SCALE: NTS



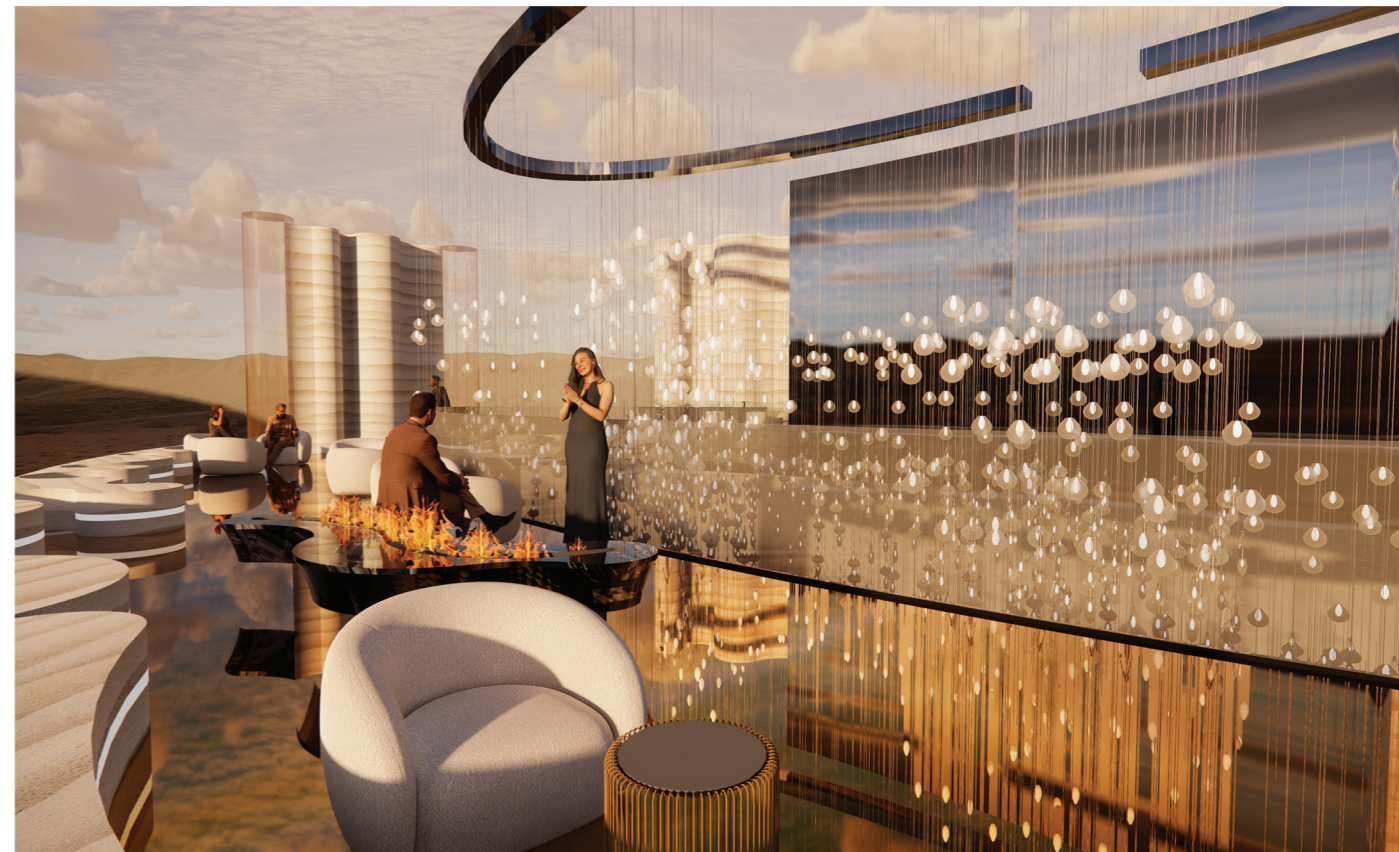
LUMINA | NIGHTCLUB
RECEPTION
SCALE: NTS



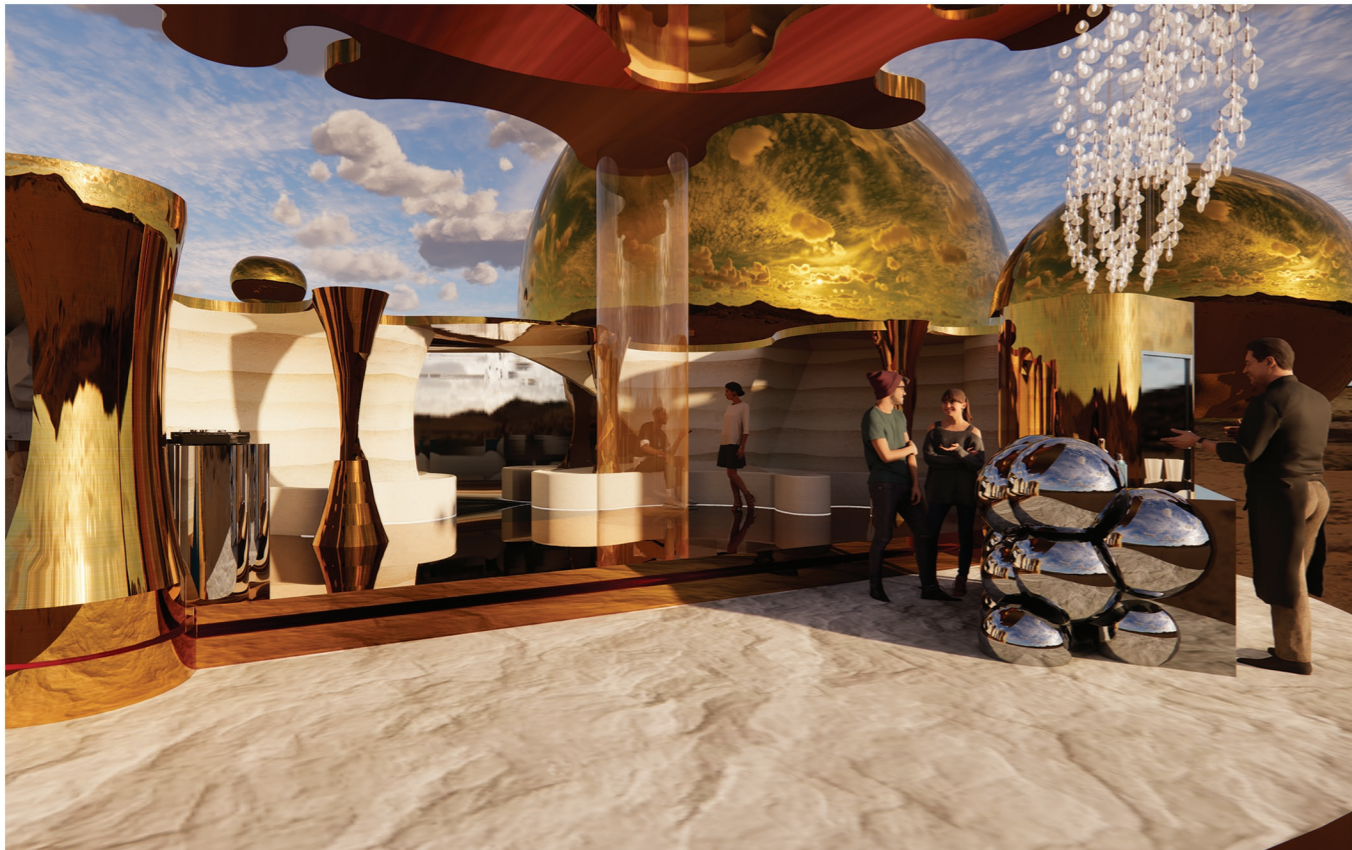
RECEPTION



DANCE FLOOR



SLOW LOUNGE



VIP | DANCE FLOOR



VIP | SLOW LOUNGE



FLOATING LOUNGES

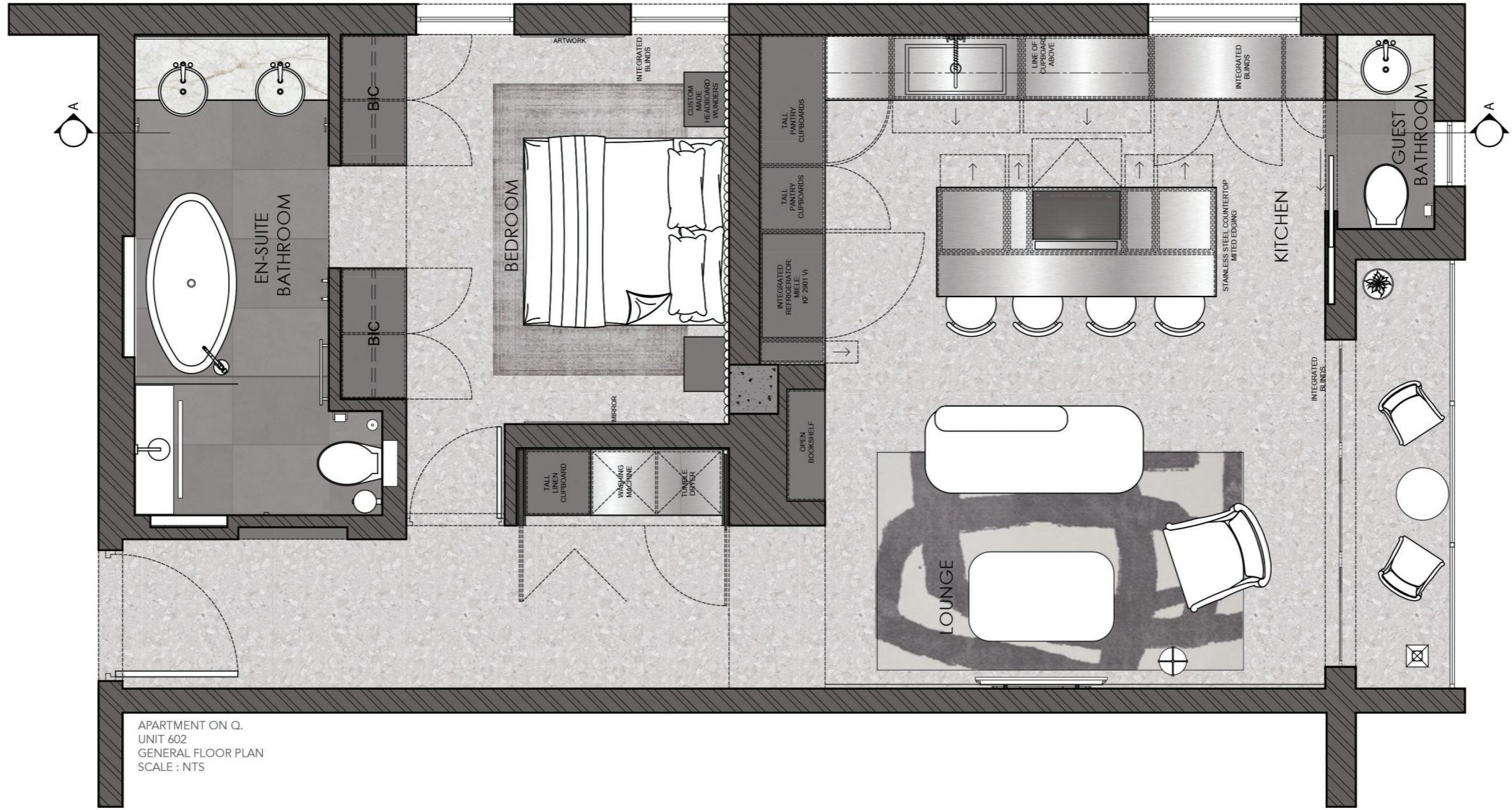


BRIEF

Your task is to design a contemporary show apartment. This aesthetic will govern your interior scheme broadly and must be carefully considered when designing your kitchen, bathroom and cabinetry detail.

APARTMENT ON Q.

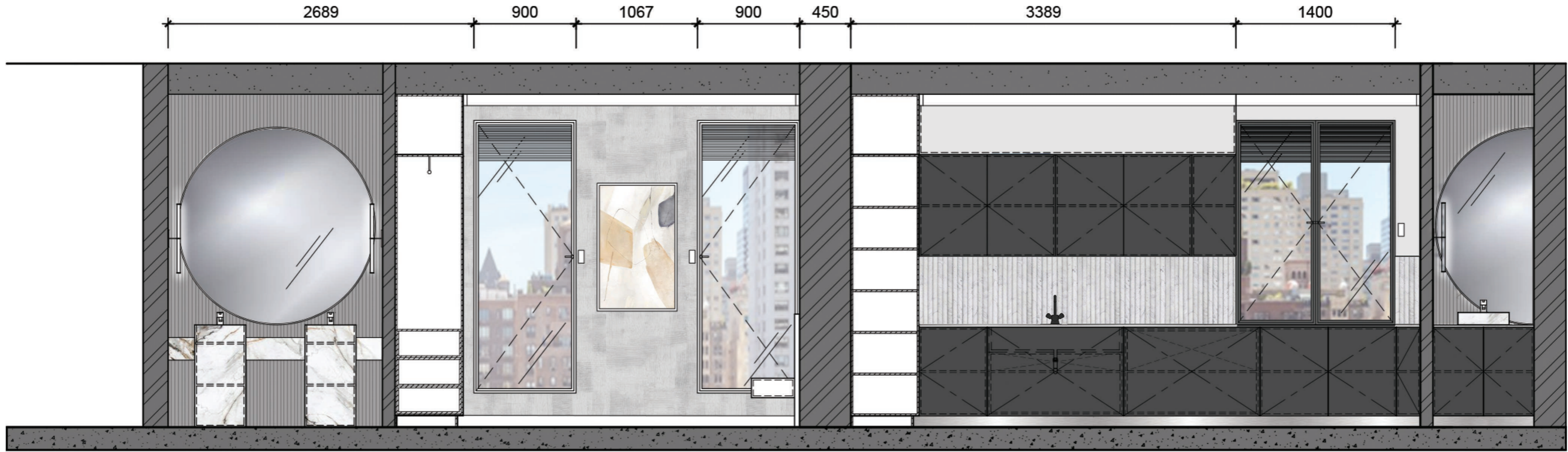
Apartment On Q. Unit 602, has been meticulously transformed with a sophisticated modern contemporary style, breathing life into the living space. This residence has been thoughtfully curated to not only appeal to the senses but also prioritize functionality. Each door conceals meticulously crafted cabinetry, presenting residents with a seamless blend of aesthetic charm and practicality. The attention to detail extends beyond mere visual appeal, offering ample storage solutions that enhance the overall living experience. Welcome to a home where form meets function in perfect harmony.



APARTMENT ON Q.
 UNIT 602
 GENERAL FLOOR PLAN
 SCALE : NTS







APARTMENT ON Q.
UNIT 602
GENERAL ELEVATION
SCALE : NTS

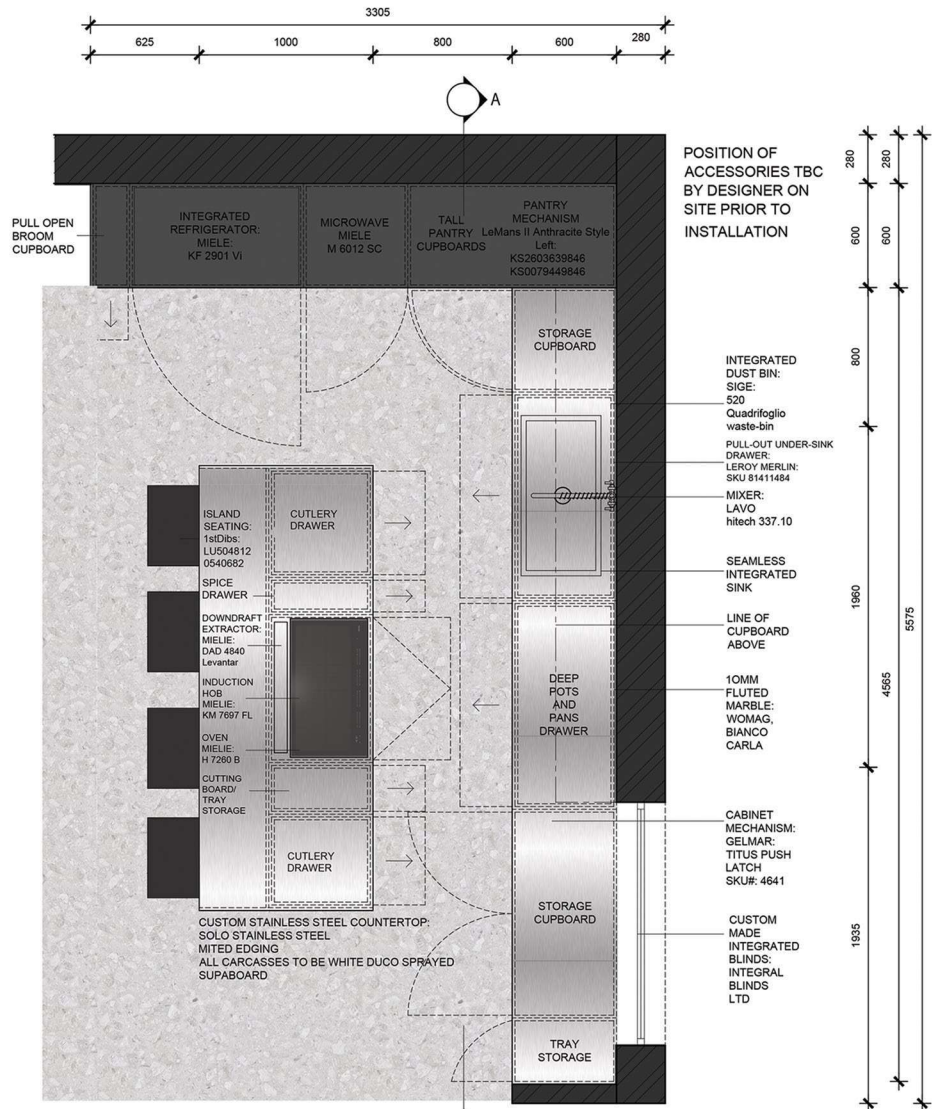


PERSPECTIVE OF LOUNGE

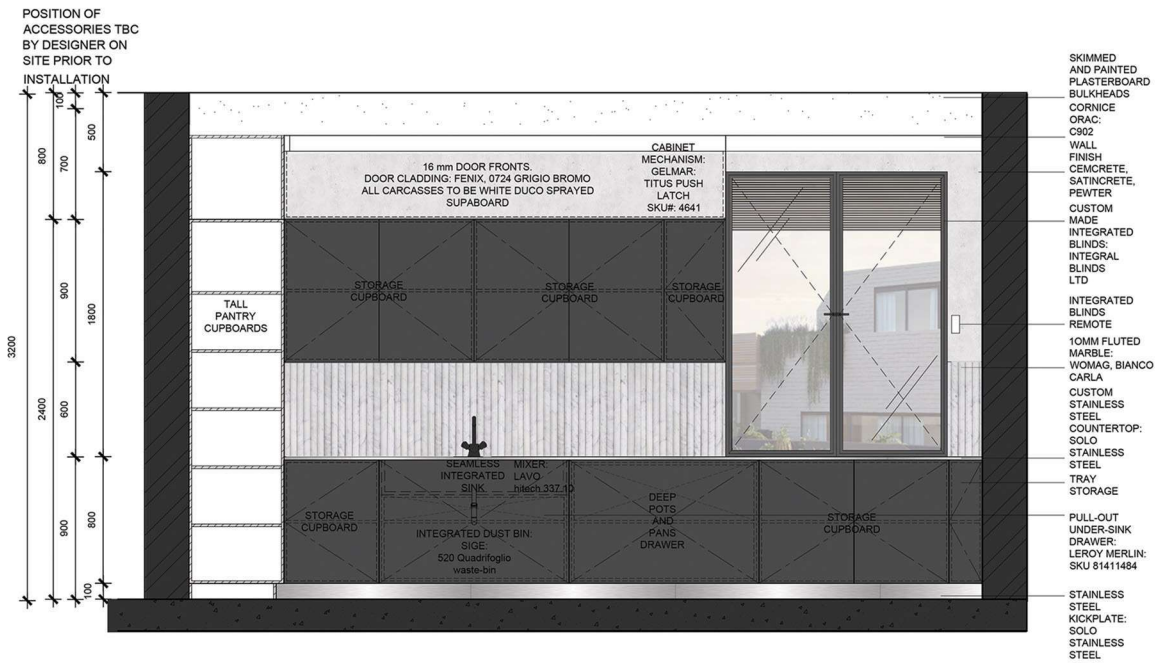


PERSPECTIVE OF BEDROOM





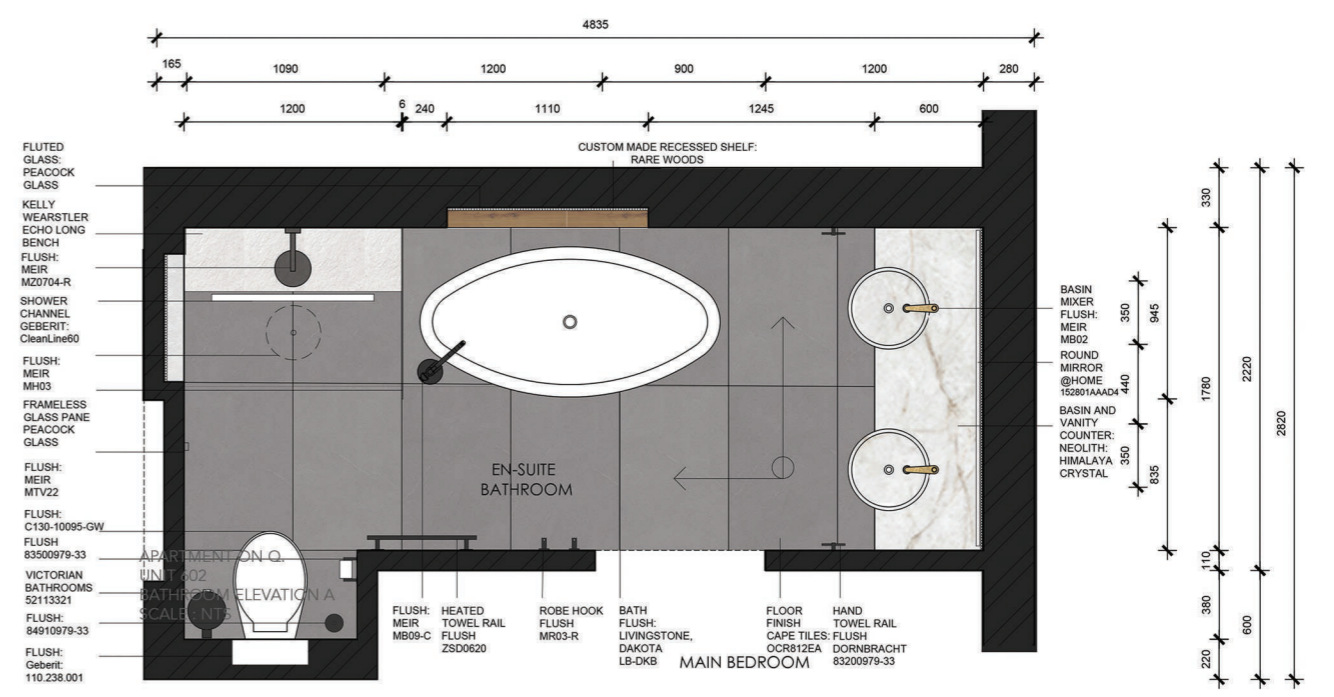
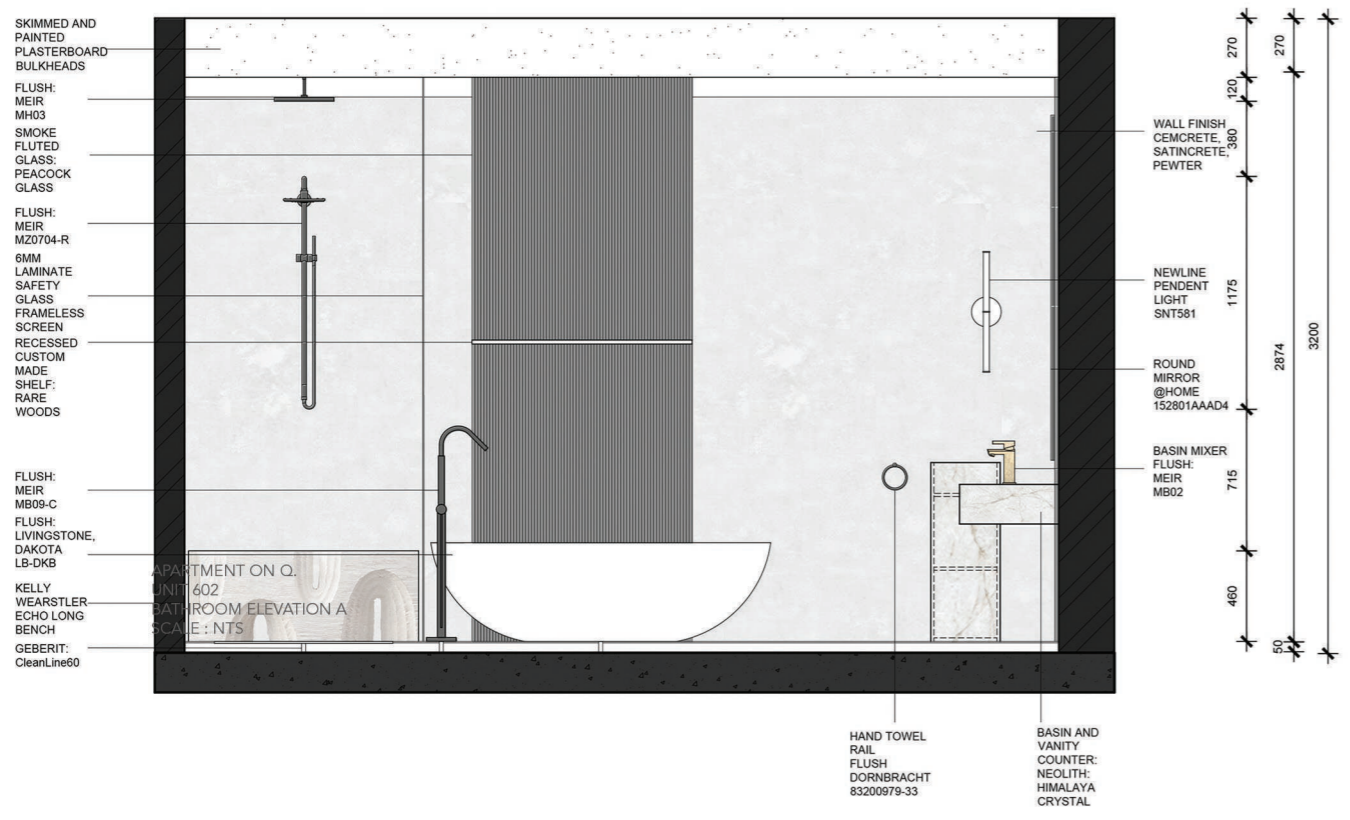
ON Q | APARTMENT 602
 KITCHEN FLOOR PLAN
 SCALE 1:25















BRIEF

Design an edgy, on trend retail store with a eye-catching window display that will draw customers into your unique store. Create a successful store layout to suit the style of your product and promote your brand to its full potential.

FOREST FLUSH

Forest Flush has been designed to create a unique experience for consumers by allowing them to create their own floral arrangements with the help of an experienced staff member. The space has been designed to accommodate for a large flow of people with a large table in the centre to allow floral arrangements to be assembled. There is also a courtyard located in the back of the store to allow customers to relax and to enjoy the flora around them.



ELEVATION



WORKSPACE



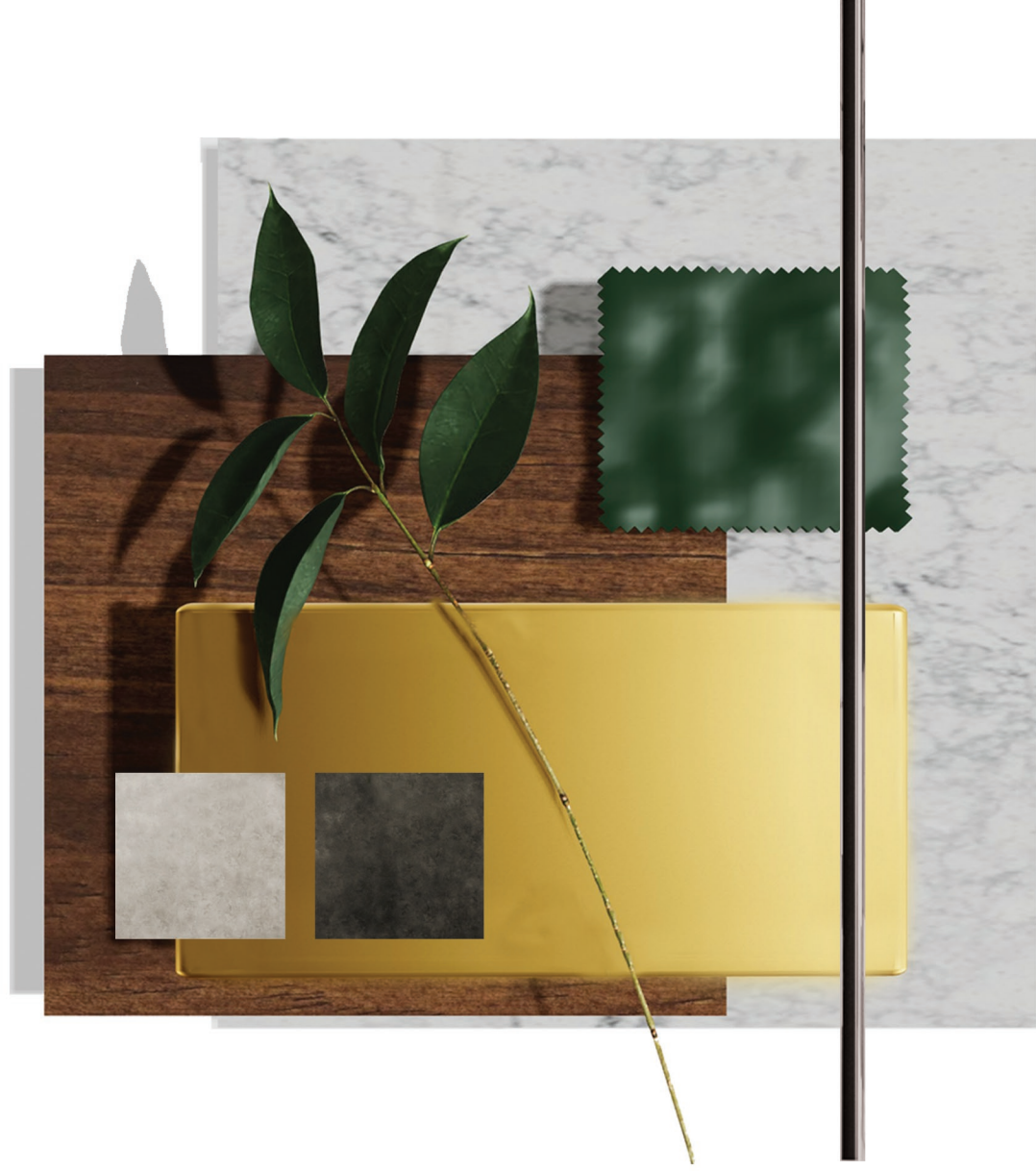
WINDOW DISPLAY



COURTYARD



FLORAL STORAGE



BRIEF

Candlestick holders and vases are currently on trend and can be seen all over social media. There is however a gap in the Design and Décor industry for acrylic candleholders/vases and décor and design enthusiasts around the country your designs in order to bring new life to their boring table settings.

Your challenge is to design a candlestick holder / vase with a maximum height of 300mm and a maximum width of 70 mm.

Note: Your holder can only consist of acrylic/Perspex but can be any colour and shape of your choice.

THE HARMONIOUS VASE

The Harmonious vase is a stunning and unique representation of the delicate balance between masculinity and femininity. The vase itself boasts strong, angular lines and a sturdy, robust construction, symbolizing masculinity.

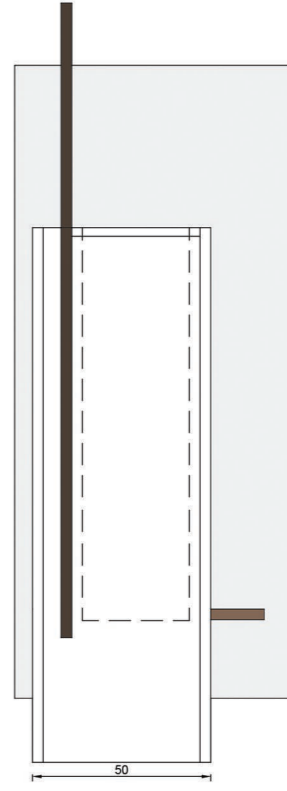
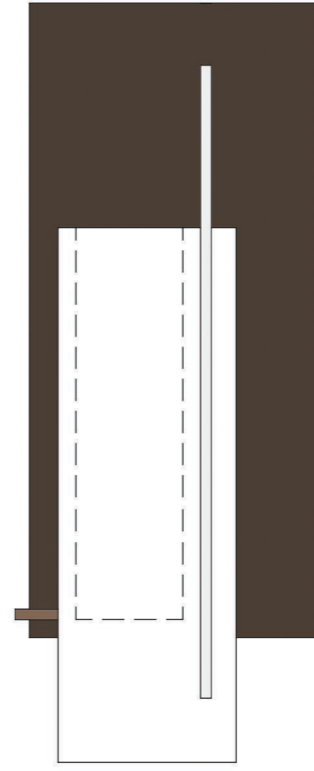
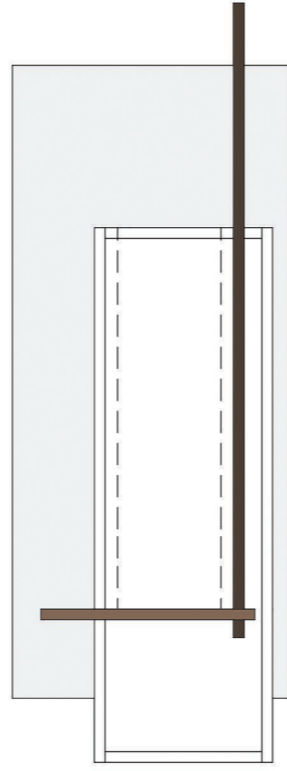
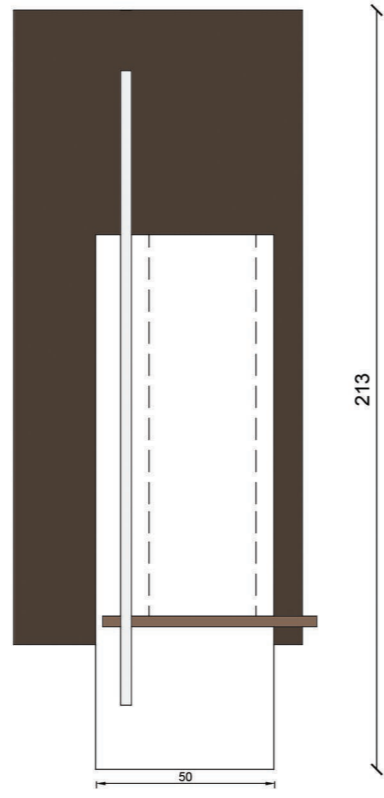
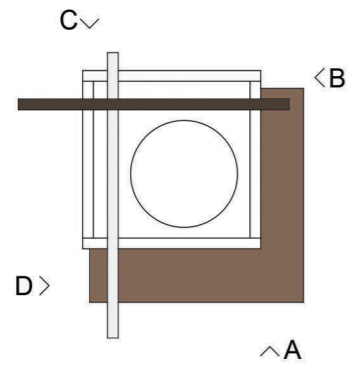
However, the true beauty of this vase lies in its ability to embrace and complement the feminine aspect. It is designed to hold and display an arrangement of fresh, vibrant flowers. The floral arrangement represents femininity with its softness, grace, and vibrant colors. Together, the rigid exterior of the vase and the delicate, flowing flowers inside create a harmonious union of the two contrasting elements.

The Harmonious serves as a visual metaphor for the idea that true strength and balance come from the seamless integration of both masculine and feminine qualities. It's not just a piece of decor; it's a statement of unity and equilibrium, reminding us that beauty can be found in the fusion of opposites.



Product Photographs





BRIEF

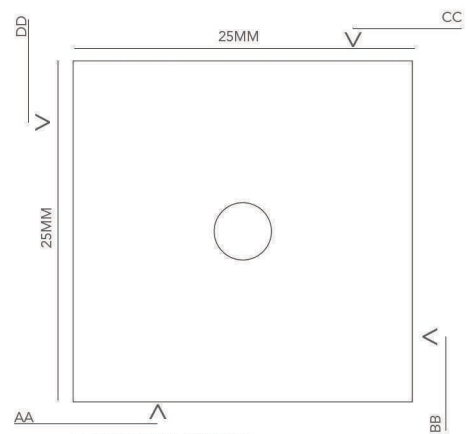
Lighting is crucial in interior design as it influences the ambiance, highlights architectural details, and showcases decor. Proper lighting enhances functionality, creates focal points, and establishes mood. It impacts color perception and spatial dynamics, turning spaces into aesthetically pleasing, comfortable, and functional environments.

You have been tasked to conceptualise, design and create a working table light. bear in mind the purpose of your light. Is it an ambience or a task light?

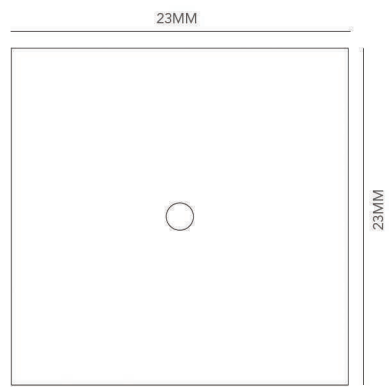
A SAILORS HEXAHEDRON

 TOP MARK

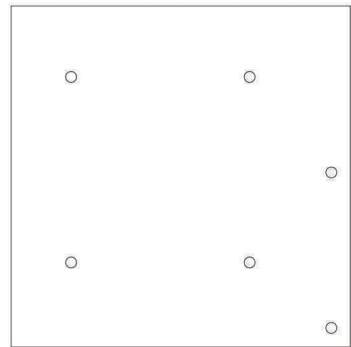
A Sailors Hexahedron was inspired by the knots sailors use to secure their vessels. The light is made out of a clear blue perspex with multiple holes drilled into it. Through these holes, rope can be threaded in and out of them to create different patterns and knots. The light bulb can be placed inside the box or be secured to the top. The Rope pattern can be altered and the table light does have an option to be hung on a wall.



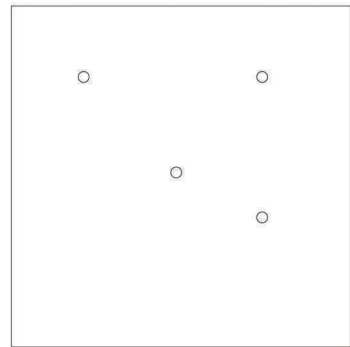
HEXAHEDRON | LID PART 1
PLAN
SCALE: NTS



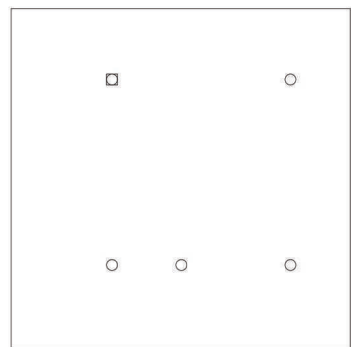
HEXAHEDRON | LID PART 2
PLAN
SCALE: NTS



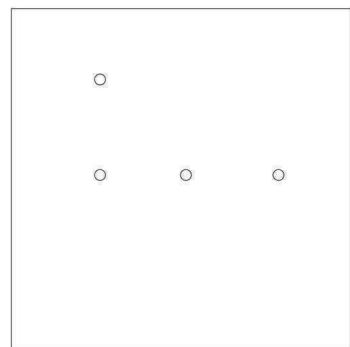
HEXAHEDRON | ELEVATION AA
SCALE: NTS



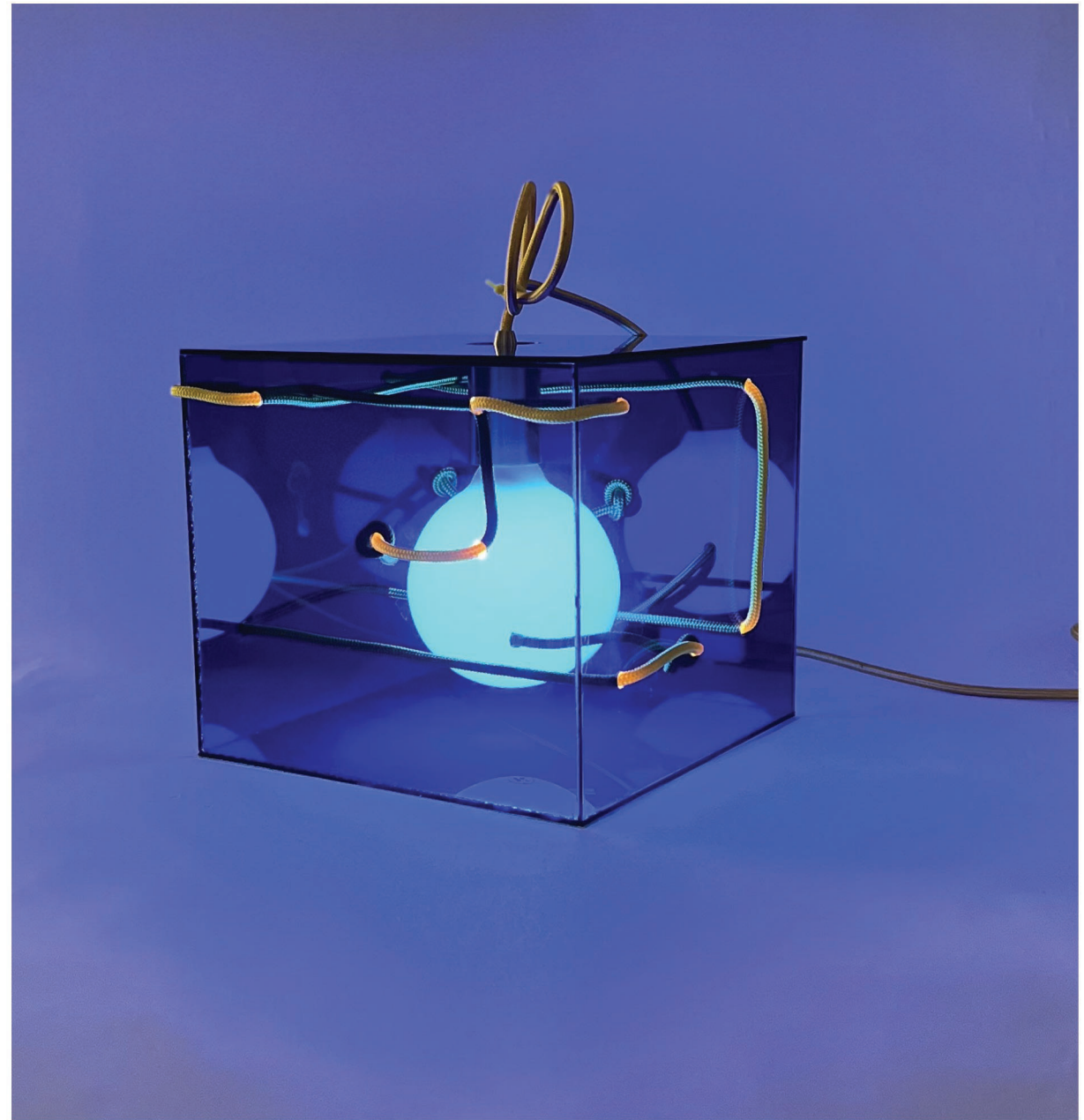
HEXAHEDRON | ELEVATION BB
SCALE: NTS



HEXAHEDRON | ELEVATION CC
SCALE: NTS



HEXAHEDRON | ELEVATION DD
SCALE: NTS



BRIEF

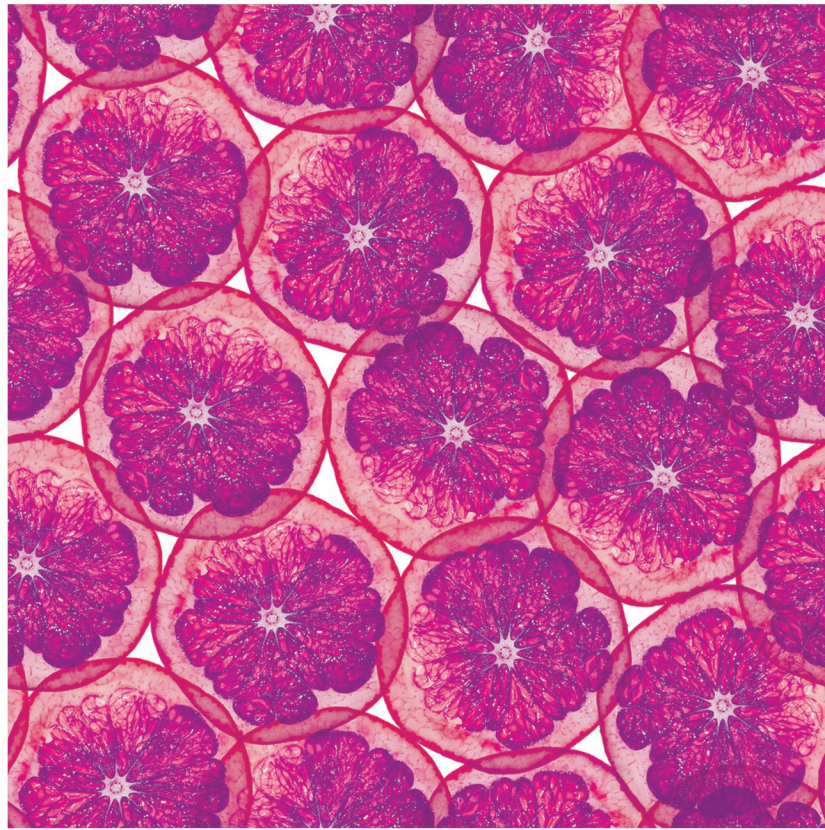
You have been commissioned to create a textile with the use of a fruit. Textiles are vital in interior design, offering a versatile toolkit for enhancing aesthetics and functionality. From drapery to rugs, they add texture and color, influencing the overall atmosphere. Beyond decoration, textiles contribute to comfort and practicality, making them essential for well-designed living or working spaces.

With this in mind create an adventurous textile by photographing a fruit section and manipulate its colour and visual properties.

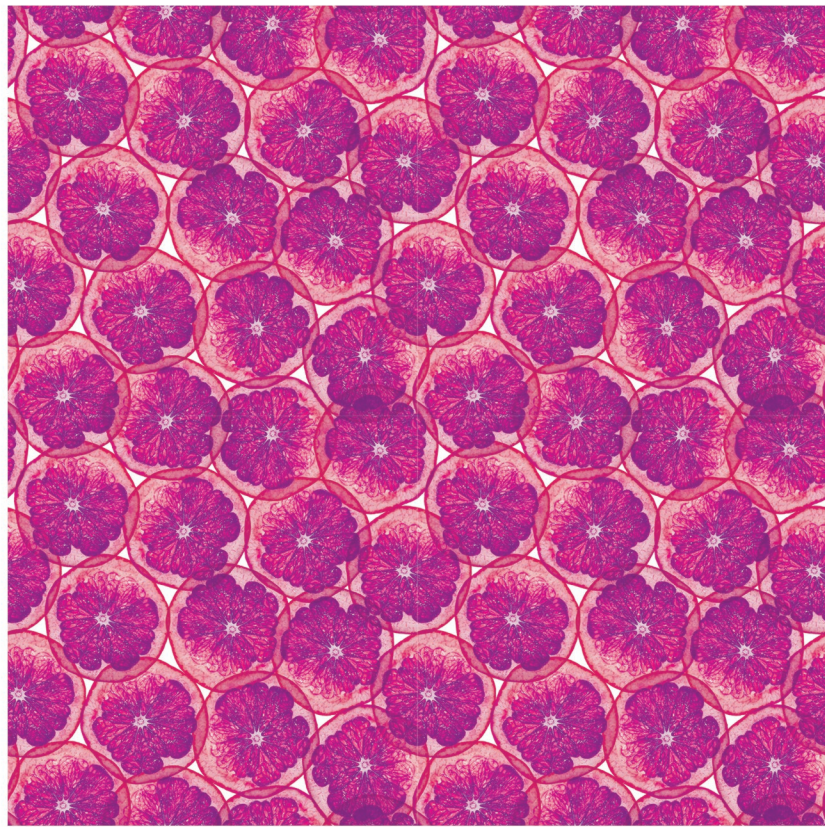
AN EDIBLE SECTION

 INHOUSE TOP 5

An Edible Section is a visual journey of a thinly sliced grapefruit. Each segment has been meticulously photographed and unveils the natural beauty of this citrus jewel. Through hue and saturation adjustments, i have accentuate the grapefruit's inherent pink tones, creating a captivating visual display.



SINGLE



REPEAT



PROTOTYPE

BRIEF

Photography is crucial in interior design for visually articulating design concepts. It captures the details, ambiance, and aesthetic of a space, serving as a powerful tool to communicate the designer's vision to clients and the broader audience. Through compelling images, interior photography becomes an essential medium for showcasing craftsmanship and creating a lasting visual narrative that underscores the impact of thoughtful design.

With this in mind, choose a location and under the guidance of Inge Prins take the following photographs:

1. Interior Photograph.
2. Exterior Photograph.
3. A Self Portrait - Submitted as black and white.

THE WINCHESTER HOTEL

The Winchester Hotel in Cape Town, as captured through my lens, exudes a captivating blend of cultural resonance and natural beauty. Emphasizing the inviting interiors and a picturesque bougainvillea courtyard, my photographs showcase a tranquil oasis within the urban setting. Carefully composed images highlight the hotel's dedication to incorporating local textures and materials, infusing each space with warmth and style.



1. Interior Photograph | Winchester Hotel



2. Exterior Photograph | Winchester Hotel



3. Self Portrait | Black and White

BRIEF

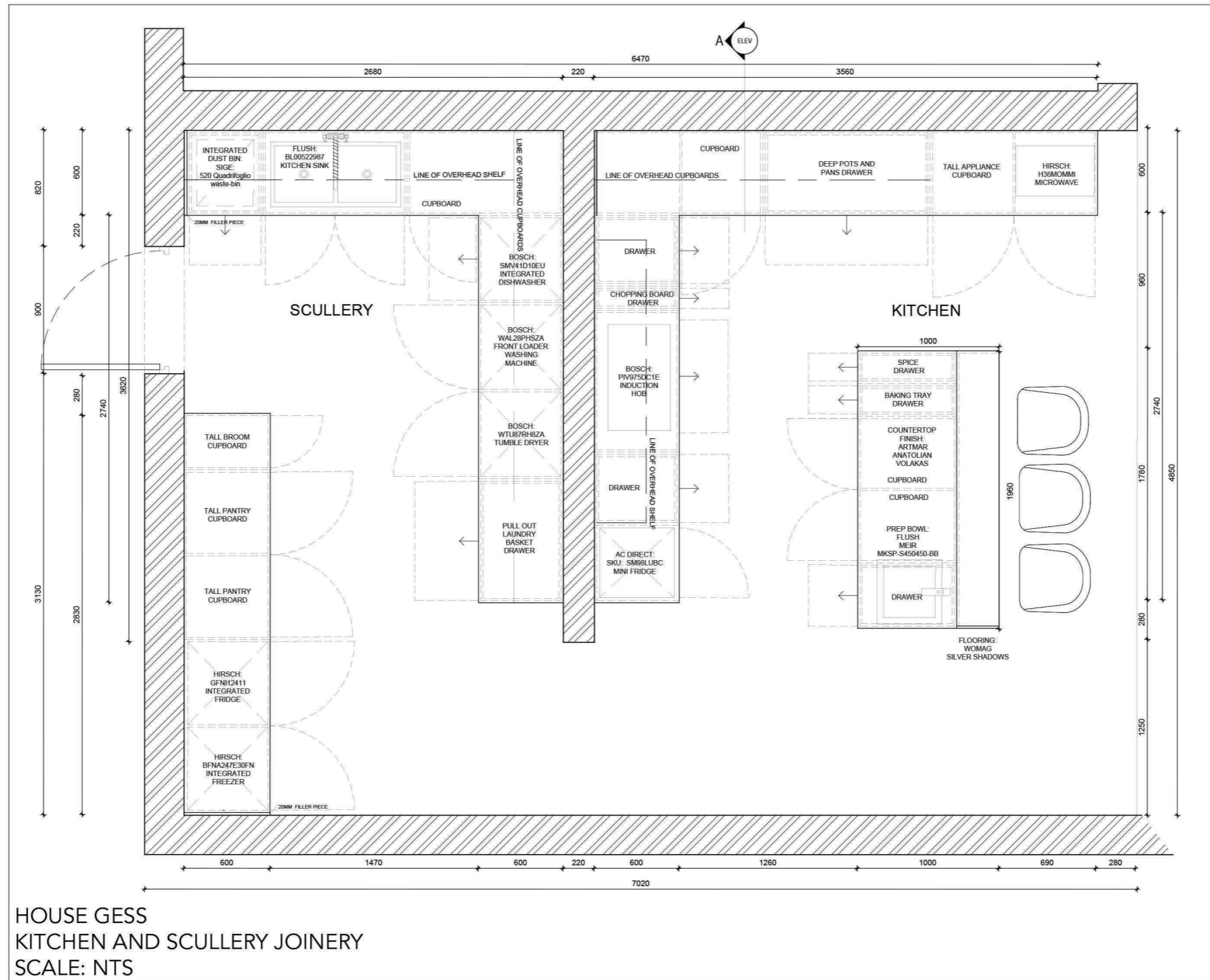
Technical drawings, such as floor plans and elevations, are vital in interior design as they serve as visual guides for translating creative concepts into functional spaces. These drawings optimize space, address practical considerations, and facilitate effective communication among designers, clients, architects, and contractors. They play a crucial role in ensuring the precise execution of design ideas during construction or renovation, balancing functionality and aesthetics in interior spaces.

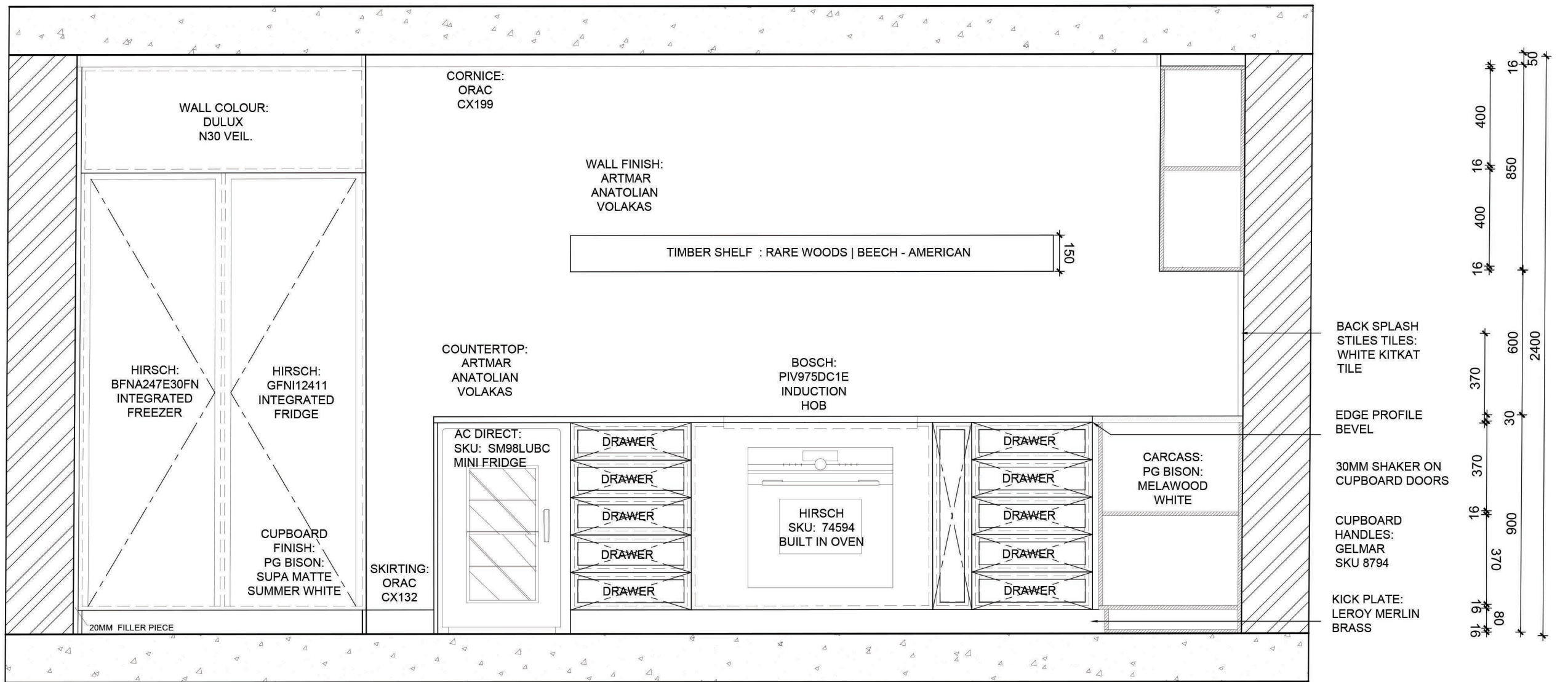
TECHNICALS

House Gess Joinery: ~ Kitchen Plan
~ Kitchen Elevation

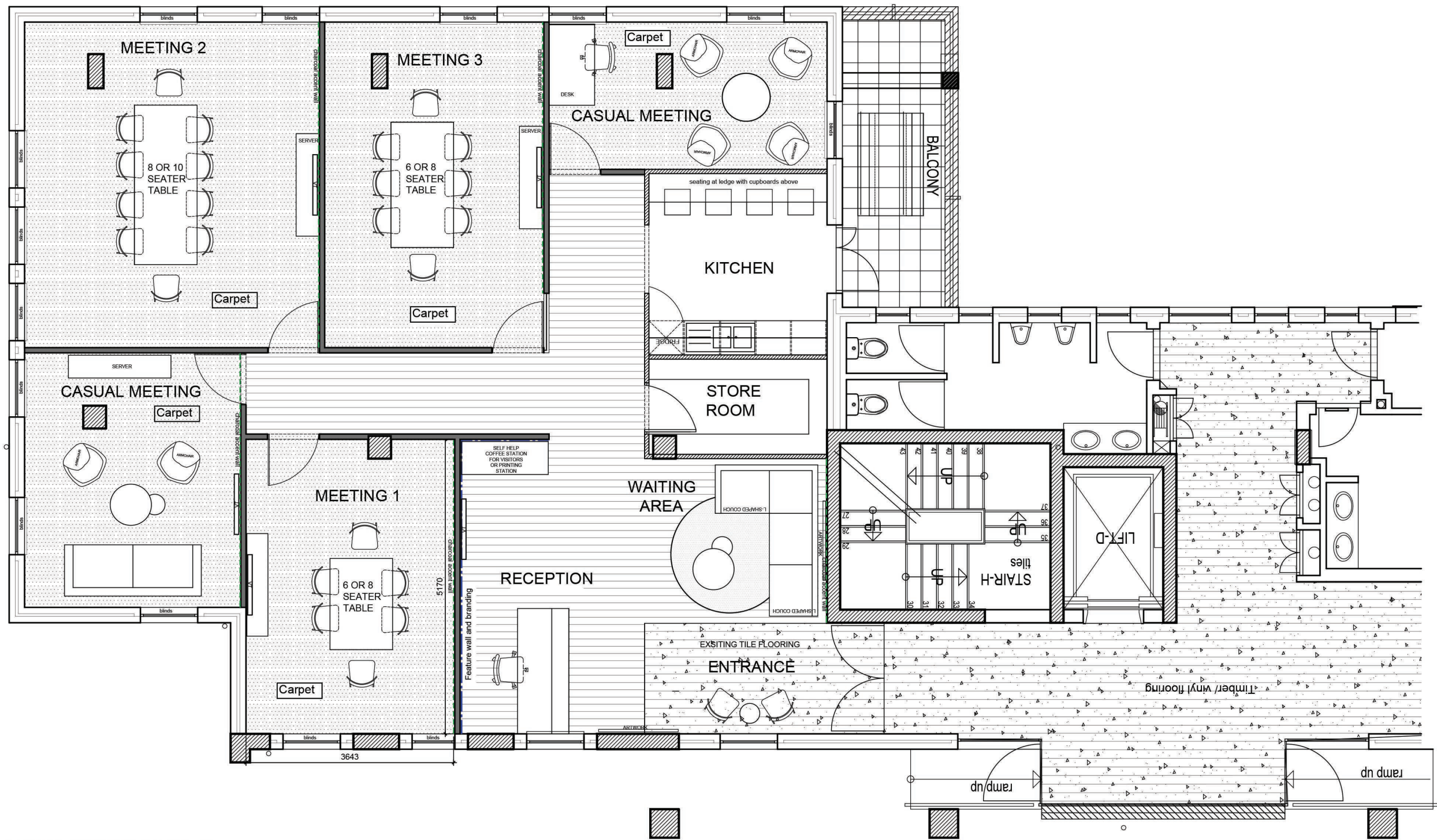
Building Construction | Working Drawing Package:

- ~ General Layout
- ~ New Build work
- ~ Data and Electrical
- ~ Lighting Plan
- ~ Floor Finishes Layout
- ~ Door and Window Schedule

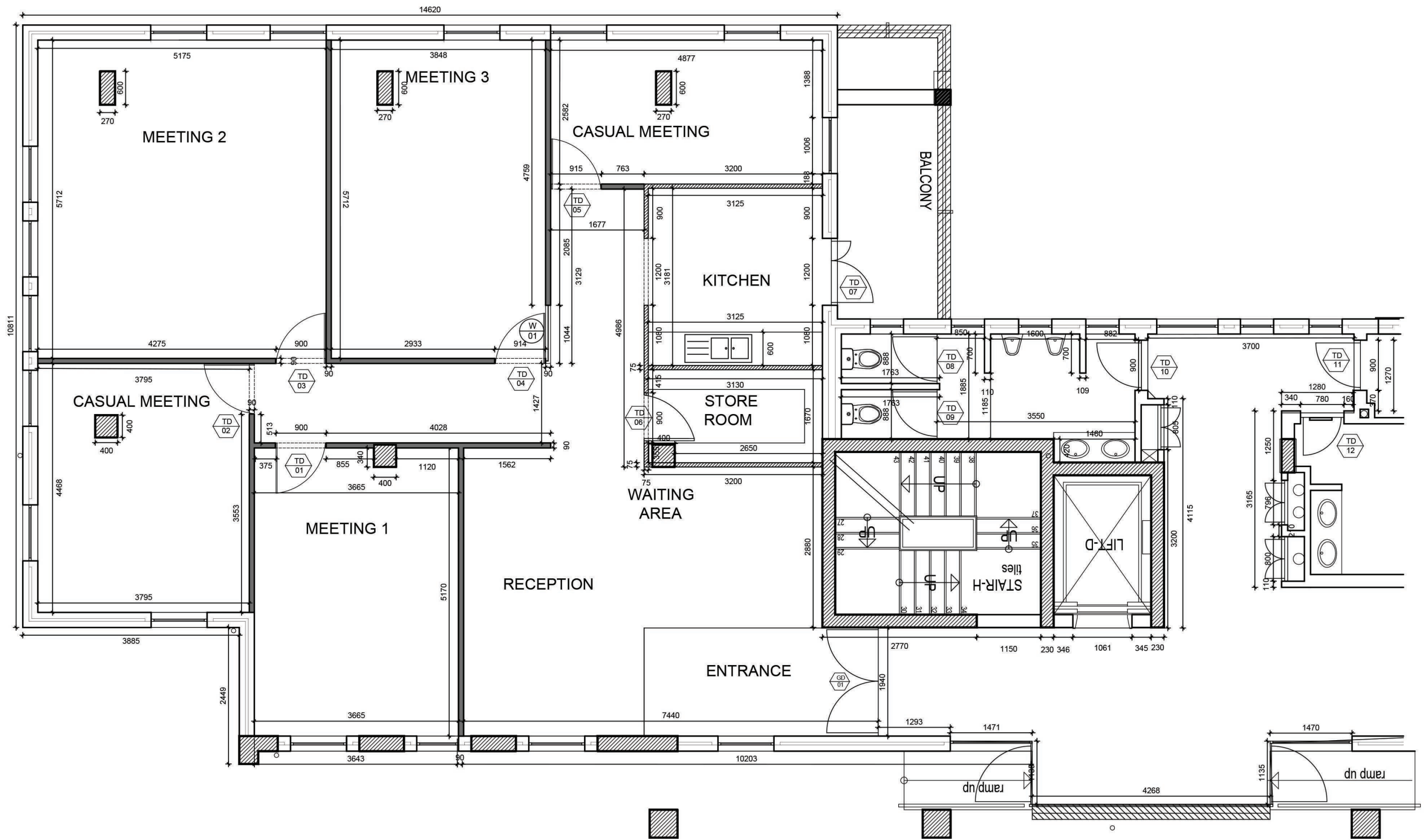




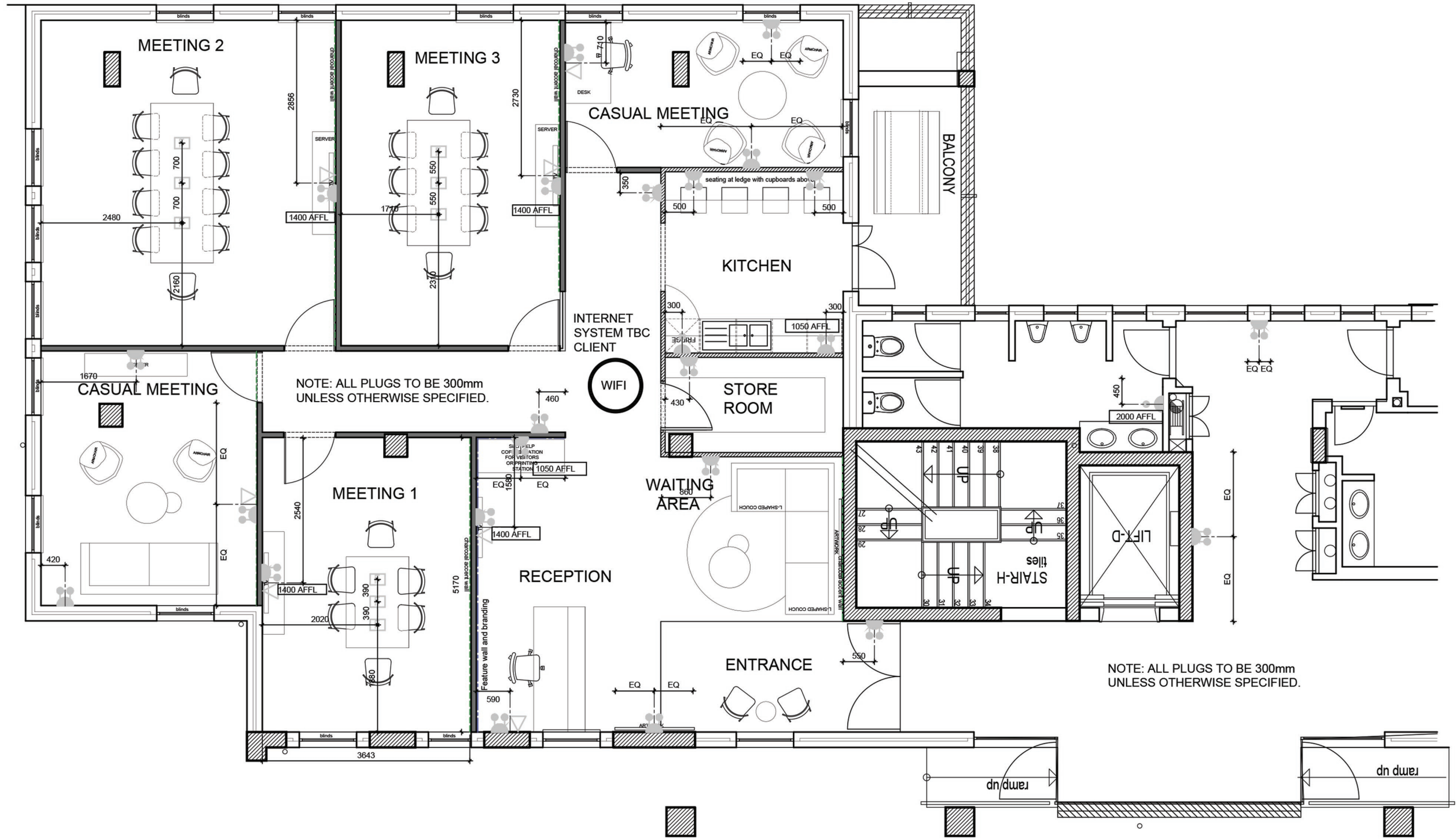
HOUSE GESS
 KITCHEN AND SCULLERY JOINERY
 ELEVATION A
 SCALE: NTS



NEW MEETING ROOMS
 GENERAL LAYOUT
 SCALE: NTS



NEW MEETING ROOMS
 NEW BUILD WORK
 SCALE: NTS



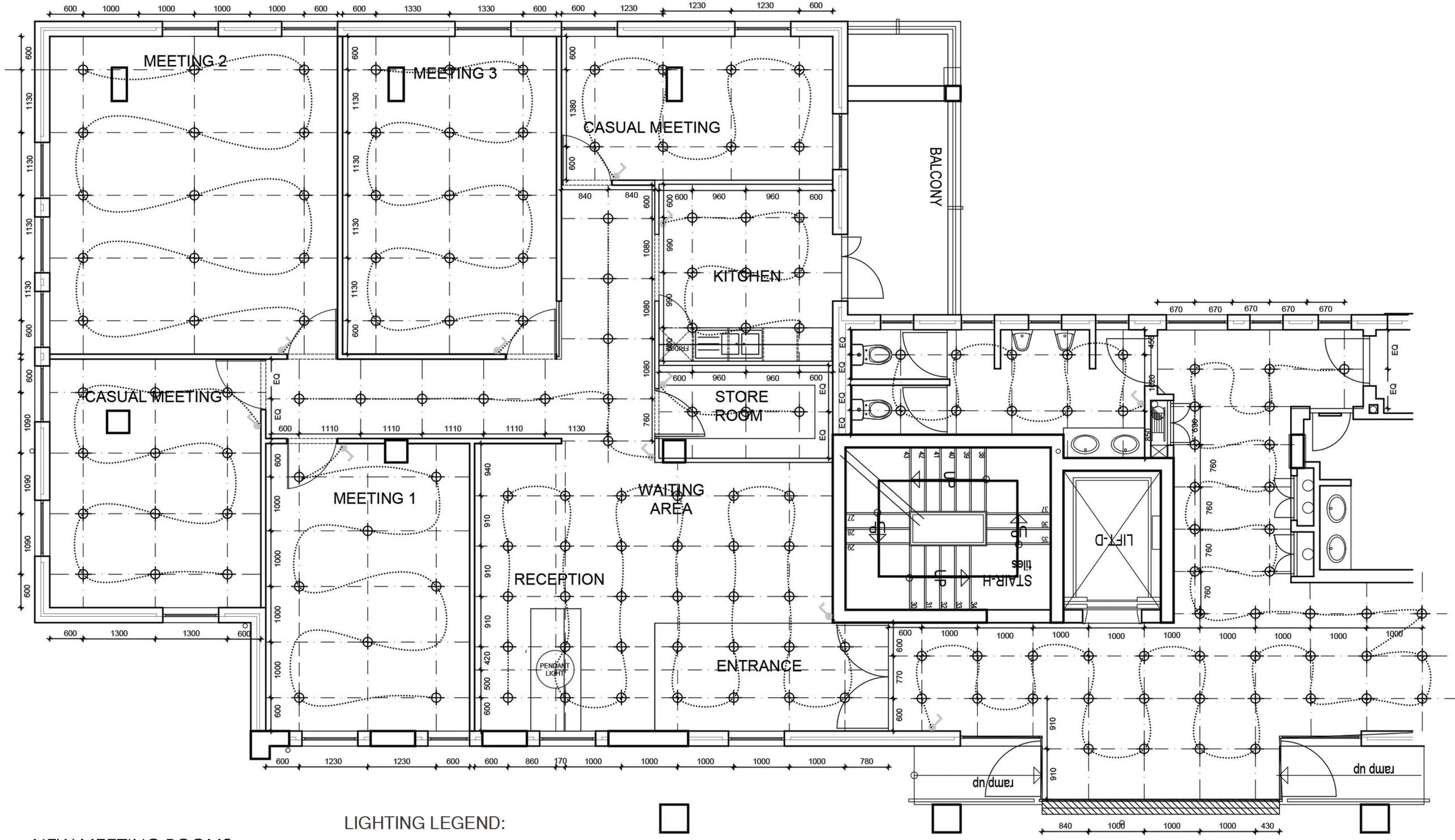
NEW MEETING ROOMS
DATA AND ELECTRICAL
SCALE: NTS

ELECTRICAL OUTLET LEGEND:

	16A Due Switched Socket
	16A Single Switched Socket
	100mm x 100mm Floor box as per spec

INTERNET SYSTEM TBC CLIENT

NOTE: ALL PLUGS TO BE 300mm UNLESS OTHERWISE SPECIFIED.



NEW MEETING ROOMS
LIGHTING PLAN
SCALE: NTS

LIGHTING LEGEND:

⊕	Downlight Lighting.co.za : Straight Twist GU10 80mm Downlight
○	Pendant Light Lighting.co.za : Kerala Gold Dome Industrial Pendant Light Size: Large
⤵	Switch Spec: Builders Warehouse - PY124WHT

P PENDANT LIGHT NOTE : FINAL POSITION OF
 P PENDANT LIGHTS TO BE
 D DETERMINED ON SITE

LET'S TALK.

- ✉ carmengregan@gmail.com
- 📞 +27 71 208 9668
- 📷 @carmen_bridget_interiors
- 📍 Salt River | Cape Town