

MARISA MARQUES

INTERIOR DESIGN AND INTERIOR ARCHITECTURE PORTFOLIO



POR
TFO
LIO

MARISA MARQUES

INTERIOR DESIGN & ARCHITECTURE

CONTENTS

01

THE FIFTH ELEMENT

A LUXURY URBAN HOTEL AND POD EXPERIENCE

PAGE 1 - 9

PAGE 10 - 17

02

ATLANTIC STUDIOS

RENOVATION OF FILMING STUDIO

03

KSA

RENOVATION OF HIGH-TECH KITCHEN

PAGE 18 - 22

PAGE 23 - 33

04

TECHNICAL PACKAGE

JOINERY AND BUILDING CONSTRUCTION DRAWINGS IN DETAIL

05

VINTAGE WITH LOVE

RETAIL DESIGN AND SPACIAL PLANNING

PAGE 34 - 37

06

DOCK HAUS

ECLECTIC HOTEL LOBBY AND RECEPTION DESIGN

PAGE 38 - 42

PAGE 43 - 45

07

DESIGNER'S APARTMENT

CREATE A "CAPSULE FOR LIVING" TO SUIT YOUR CLIENT'S NEEDS.

08

ELLERMAN HOUSE

PHOTOGRAPHY

PAGE 46 - 47

PAGE 48 - 49

09

PRODUCT DESIGN

CANDELABRA

10

PRODUCT DESIGN

UP-CYCLED STOOL

PAGE 50 - 51

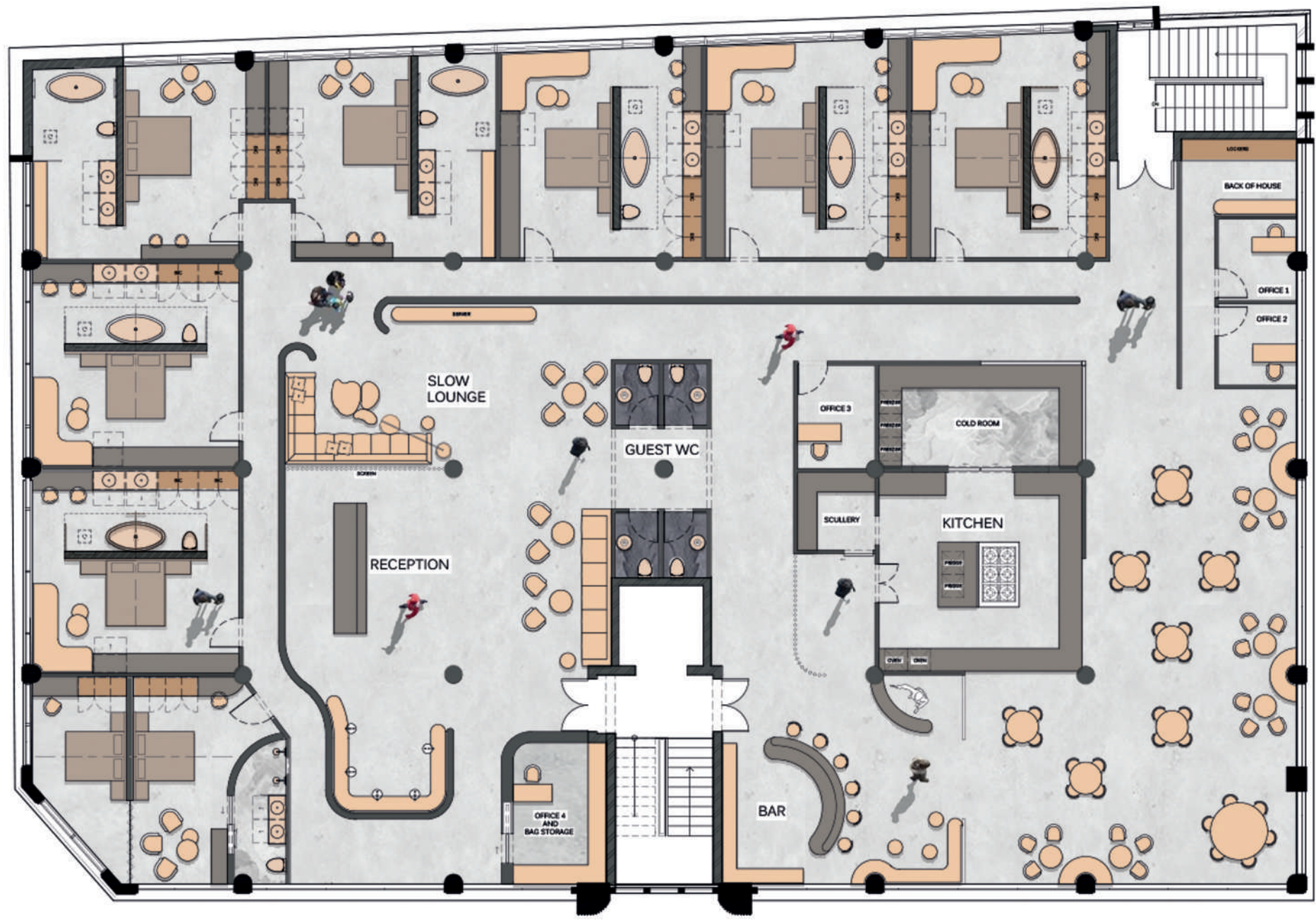
01

THE FIFTH ELEMENT

CREATE AN EXCITING URBAN EXPERIENCE IN THE HEART OF WOODSTOCK IN THE FORM OF A LUXURY HOLDING HOTEL PAIRED WITH FOUR EXPERIENTIAL LUXURY ECO PODS WHOSE LOCATION IS WITHIN A 4 HOUR DRIVE FROM WOODSTOCK.

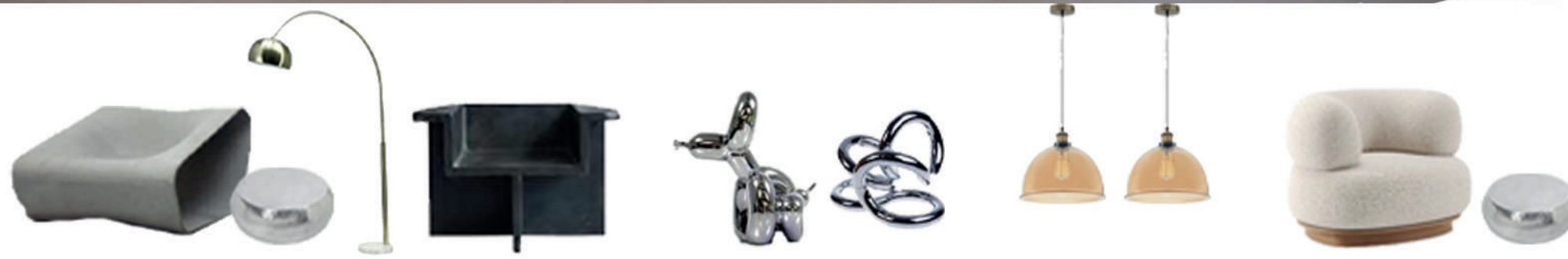
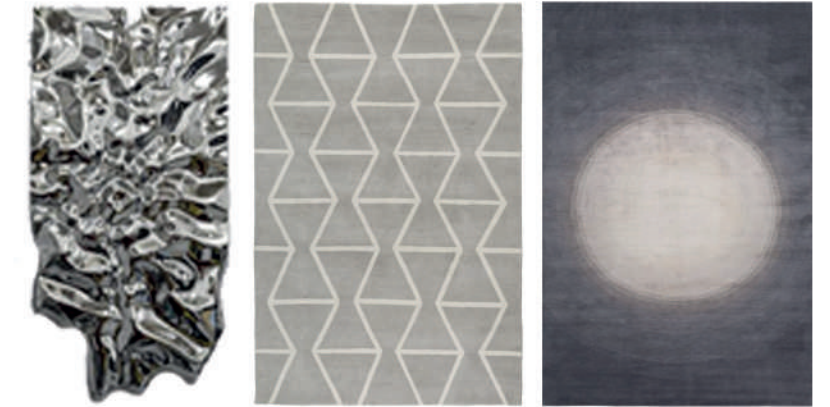
CONCEPT

THE FOUR ELEMENTS HOLD SUCH VALUE IN OUR CURRENT SOCIETY. A MENTION OF THEM CREATES A MULTITUDE OF TOPICS IN CONVERSATION. KEEPING THIS IN MIND, WHY NOT CREATE A NEW ELEMENT AND EVOKE MORE CONVERSATIONS AND FEELINGS. TECHNOLOGY IS TAKING OVER, SO LETS MAKE THE FIFTH TAKE OVER THE FUTURE OF HOTELS



FLOOR PLAN
NTS





THE FIFTH ELEMENT PODS DE HOOP NATURE RESERVE



FRONT OF POD



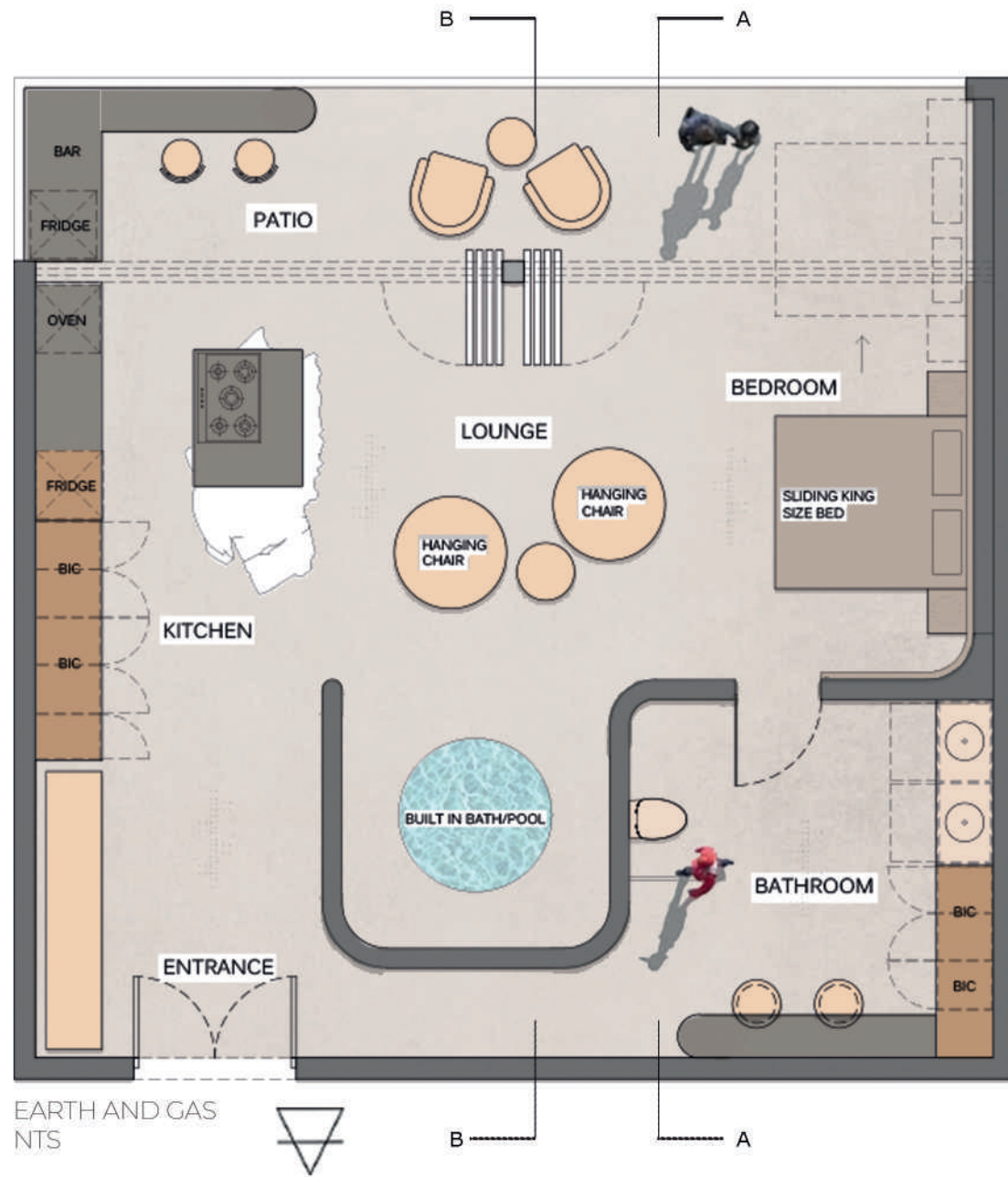
LEFT SIDE OF POD



RIGHT SIDE OF POD

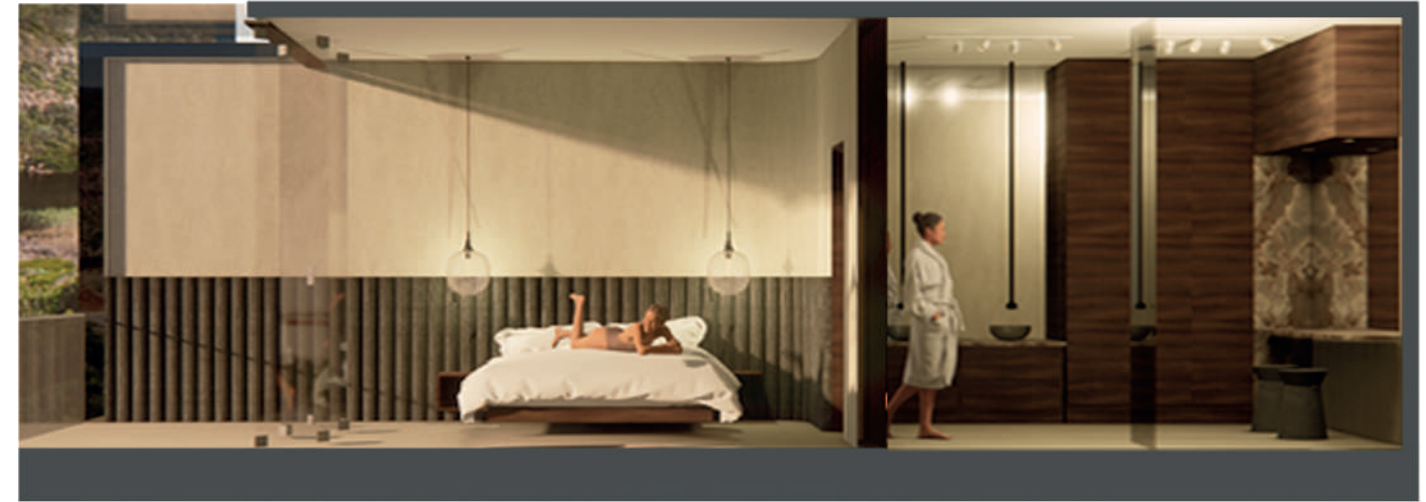


BACK OF POD

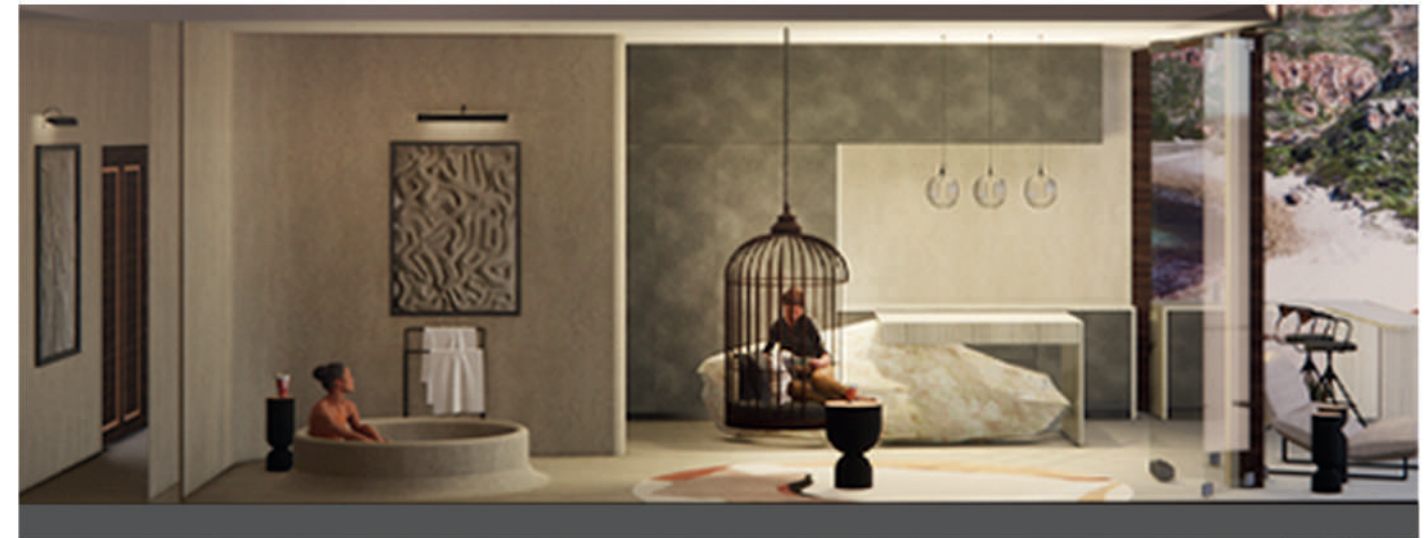


EARTH AND GAS REFLECTS MIDNIGHT AS ITS TIME OF DAY, PLAYING AROUND WITH MOVEMENT OF PARTICLES RELATING TO THE GAS THROUGH MARBLES WITH MOVEMENT IN THE GRAIN AND THE FREE CURVES WITHIN THE WALL STRUCTURE. THE EARTH ASPECT COMES THROUGH THE BUILT IN, OR SUNKEN IN FEELING OF BEING AT ONE WITH THE EARTH.

BIC BEDS SANITARYWARE COUNTERTOPS FURNITURE

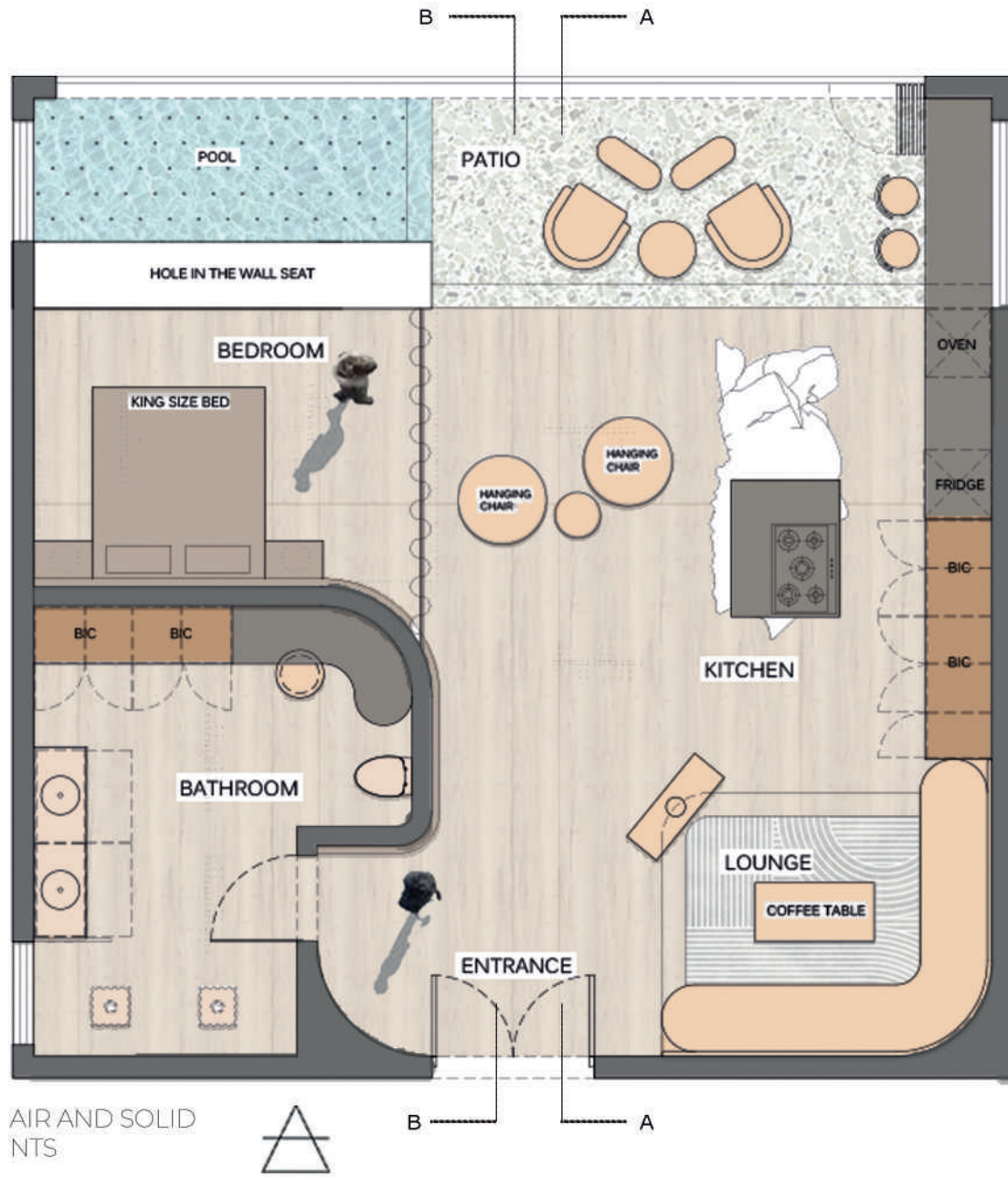


SECTION AA



SECTION BB





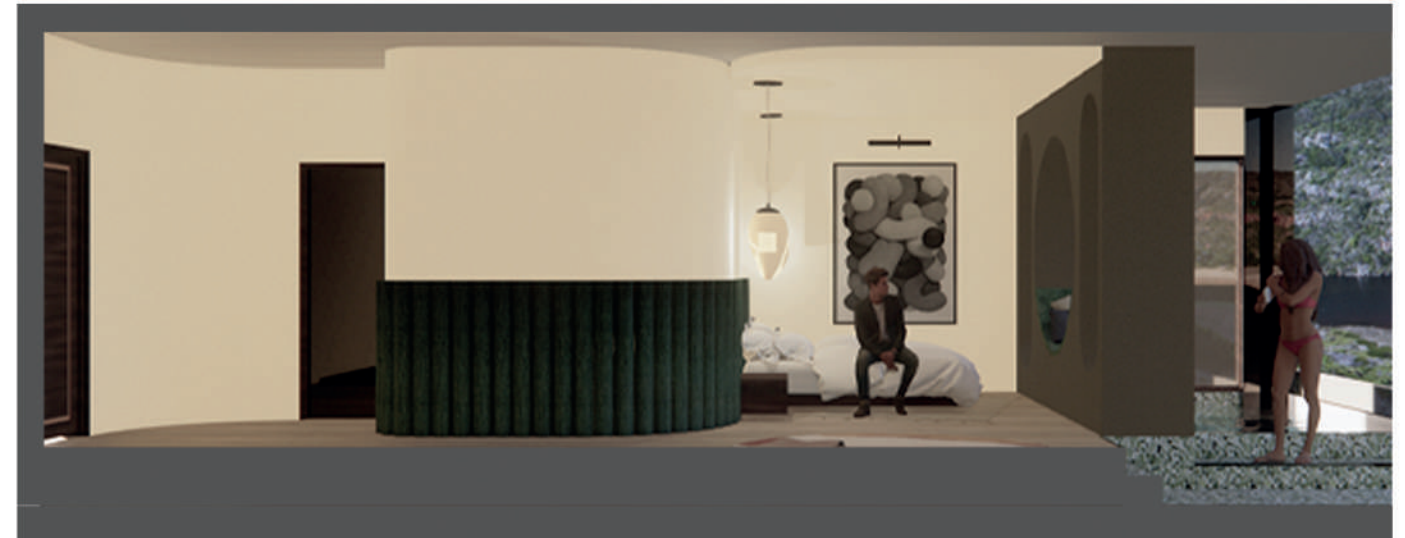
AIR AND SOLID NTS

BIC BEDS SANITARYWARE COUNTERTOPS FURNITURE

AIR AND SOLID REFLECTS SUNRISE. THE ARCHITECTURE OF THIS POD SHOULD CELEBRATE THAT AND FACE TOWARD THE EAST BRINGING IN THE MOST AMOUNT OF LIGHT IN THE MORNING. FREEDOM TO PASS THROUGH OBJECTS IS AN INDICATION OF AIR, AND WHEN SOMETHING IS STERN, AND HAS THE INABILITY FOR ANYTHING TO PASS THROUGH IT, IT IS AN INDICATION OF SOLID.

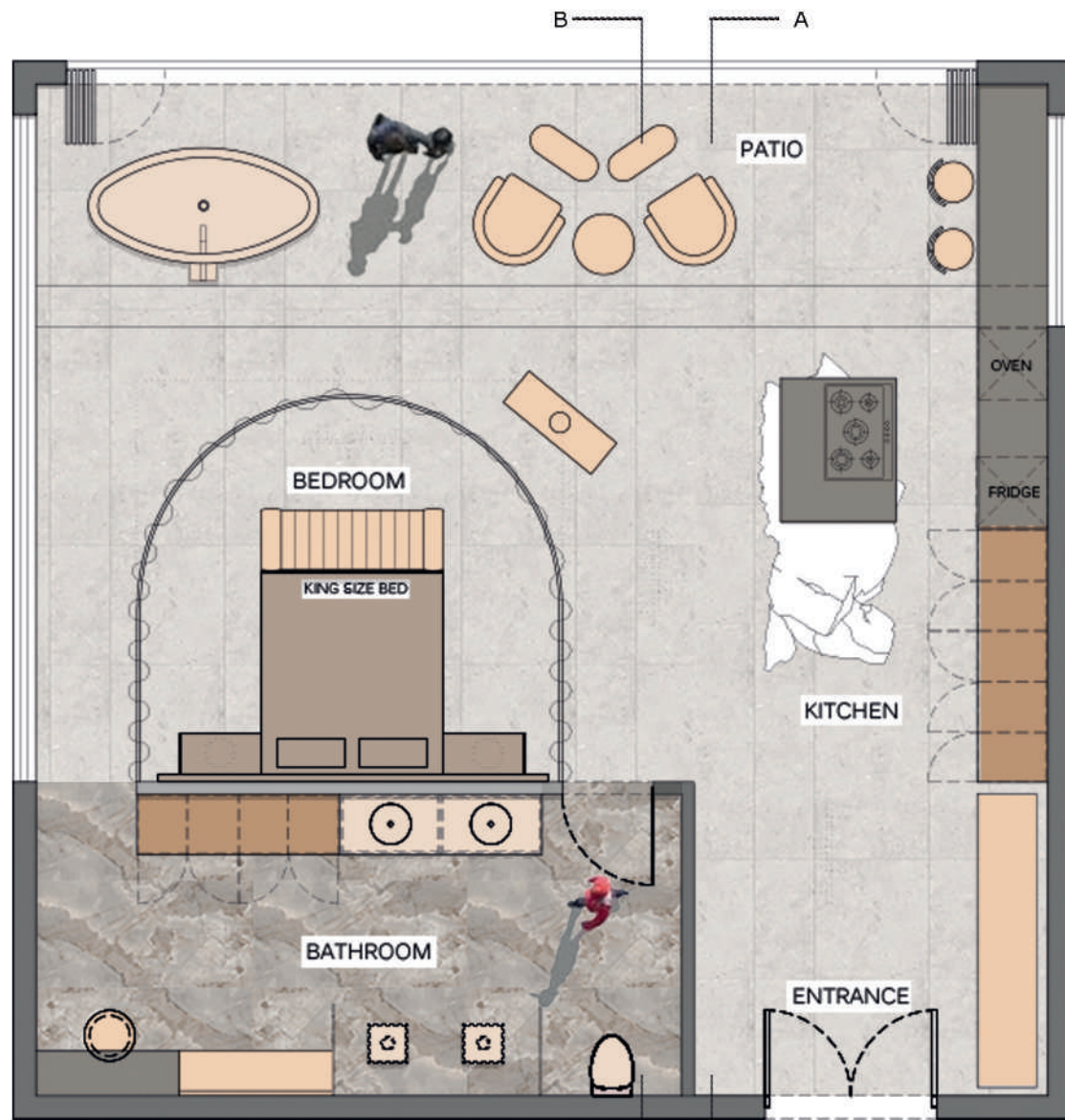


SECTION AA



SECTION BB





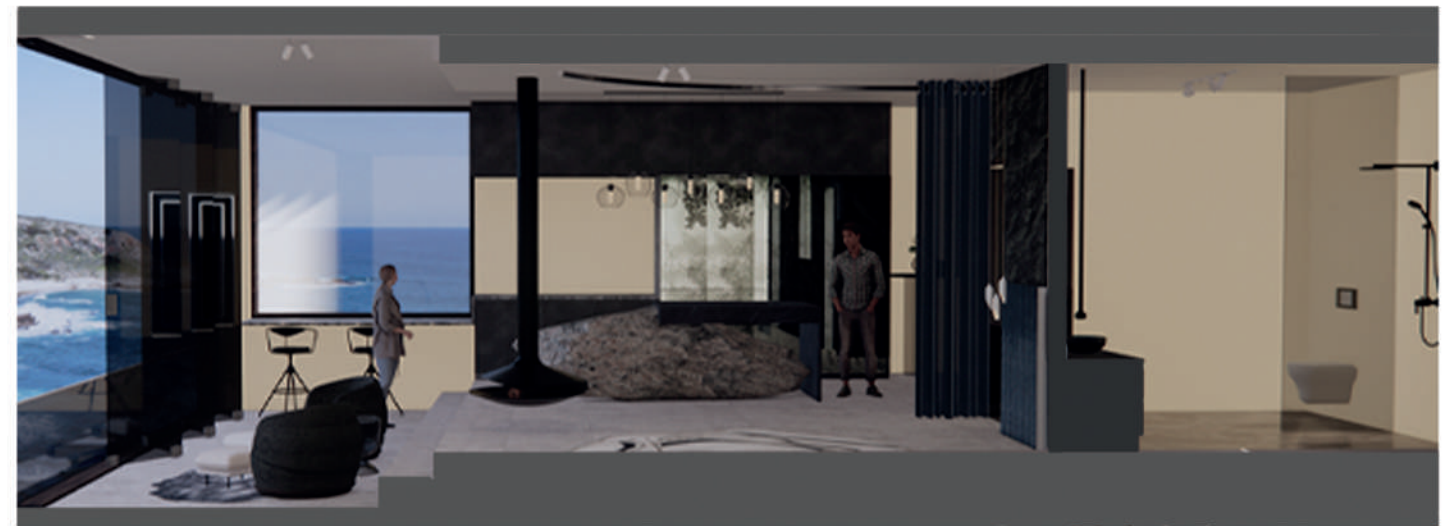
FIRE AND LIQUID
NTS



FIRE AND LIQUID RELATES TO NOON. THE HOTTEST TIME OF THE DAY, LIKE A HOT COAL THROWN INTO WATER CAUSING A THICK DARK SMOKE. TAKING SOMETHING FROM BEING BRIGHT TO ITS NATURAL DARK STATE. BRINGING THOSE OPPOSITES TOGETHER TO EVOKE FEELING.



SECTION AA



SECTION BB

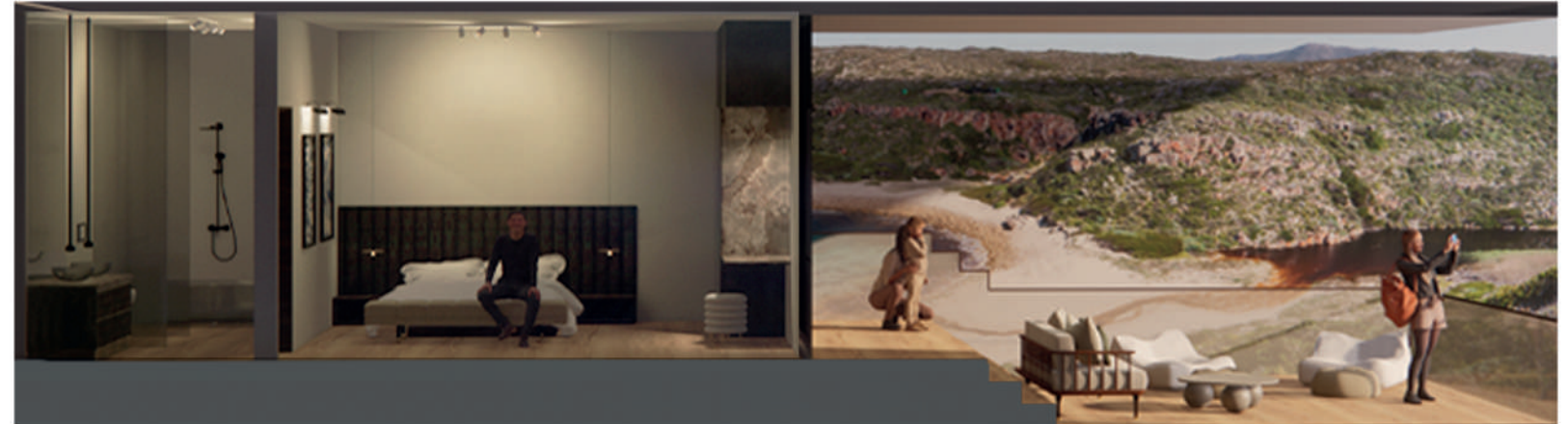




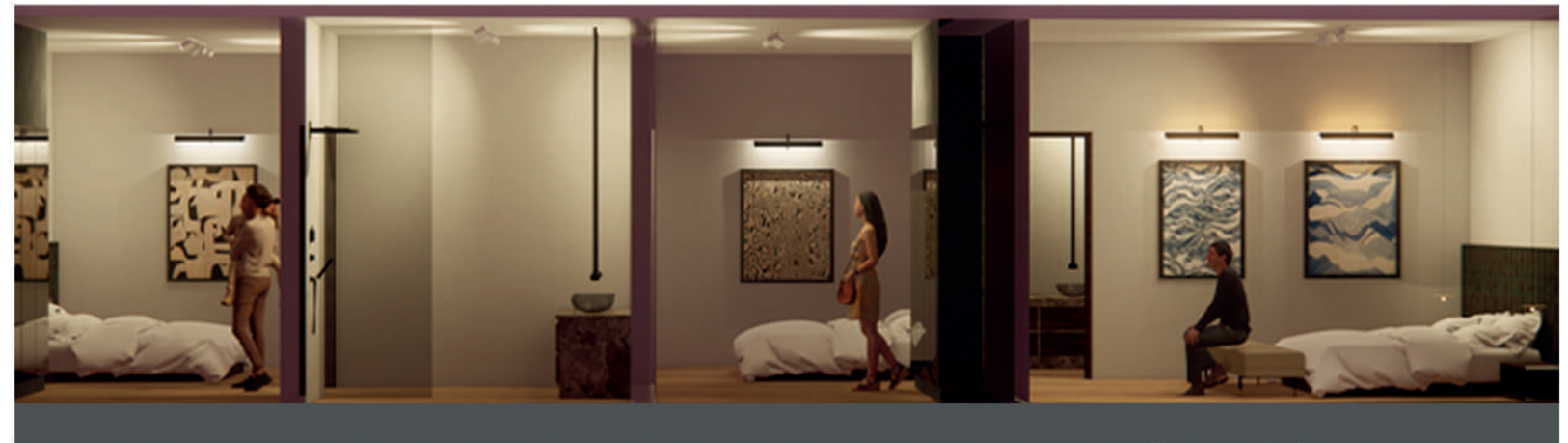
WATER AND PLASMA
NTS



WATER AND PLASMA RELATES TO SUNSET AS ITS TIME OF DAY. THIS IMAGE OF WARM LAVA - SUN HITTING AND MOULDING THE INTERIORS WITH WATER. THIS IDEA OF FORMING ROCK THROUGH FLUID MOVEMENT.



SECTION AA



SECTION BB



02

ATLANTIC STUDIOS








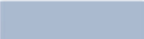



BREATHE NEW LIFE INTO THE CANTEEN, CAST LOUNGE AND CREW LOUNGE. ENSURE THE CUTTING-EDGE DESIGN REMAINS INTACT FOR YEARS TO COME.

CONCEPT

BREATHING NEW LIFE WAS THE DRIVING FORCE IN MOST OF MY DESIGN DECISIONS. USING THE COLOUR GREEN UPLIFTS THE SPACE IN A CALM AND FRESH WAY, JUST LIKE BREATHING IN AND SMELLING A FRESHLY BREWED COFFEE. THE NEW LIFE ASPECT CAME INTO PLAY WITH UPCYCLING AND REFINISHING ITEMS ALREADY IN THE SPACE AND CREATING A NEW SPACE WITH THEM.



ATLANTIC STUDIOS
FIRST FLOOR PLAN
SCALE 1:100

- | | | | |
|---|---|--|--|
|  CANTEEN TABLES |  CAST ROOM SEATING |  CANTEEN LOUNGE FLOOR LAMPS |  CAST ROOM RUGS |
|  CANTEEN LOUNGE TABLES |  CANTEEN LOUNGE RUGS |  CANTEEN SEATING |  BUILT IN ITEMS |
|  CAST ROOM TABLES |  CAST ROOM BENCH |  CANTEEN LOUNGE SEATING | |



CANTEEN LOUNGE AREA



CANTEEN LOUNGE AREA



CANTEEN COFFEE STATION



CANTEEN HIGH SEATING AREA

CANTEEN

FURNITURE AND MATERIALS



1. MAX ON TOP - WINTER WHITE 2. AMX ON TOP - SAFFRON 3. MAX ON TOP - FIR GREEN 4. @HOME - 4 SEATER COUCH 5. AIRLOOM - CHAI LATTE RUG 6. AIRLOOM - BAUHAUS BLUSH RUG 7. ESQUE - FLOOR LAMP

8. ERGOFORM - THE BON BON 9. ERGOFORM - PARK BENCH 10. ESQUE - SIMPLE CAFE CHAIR (BLACK) 11. EXISITING CANTEEN TABLES 12. ESQUE - SIMPLE CAFE CHAIR (WHITE) 13. HAUS - DIVERSION ART 14. HAUS - ARABIAN DESERT 15. HAUS - OBSCURE.ART



CAST ROOM



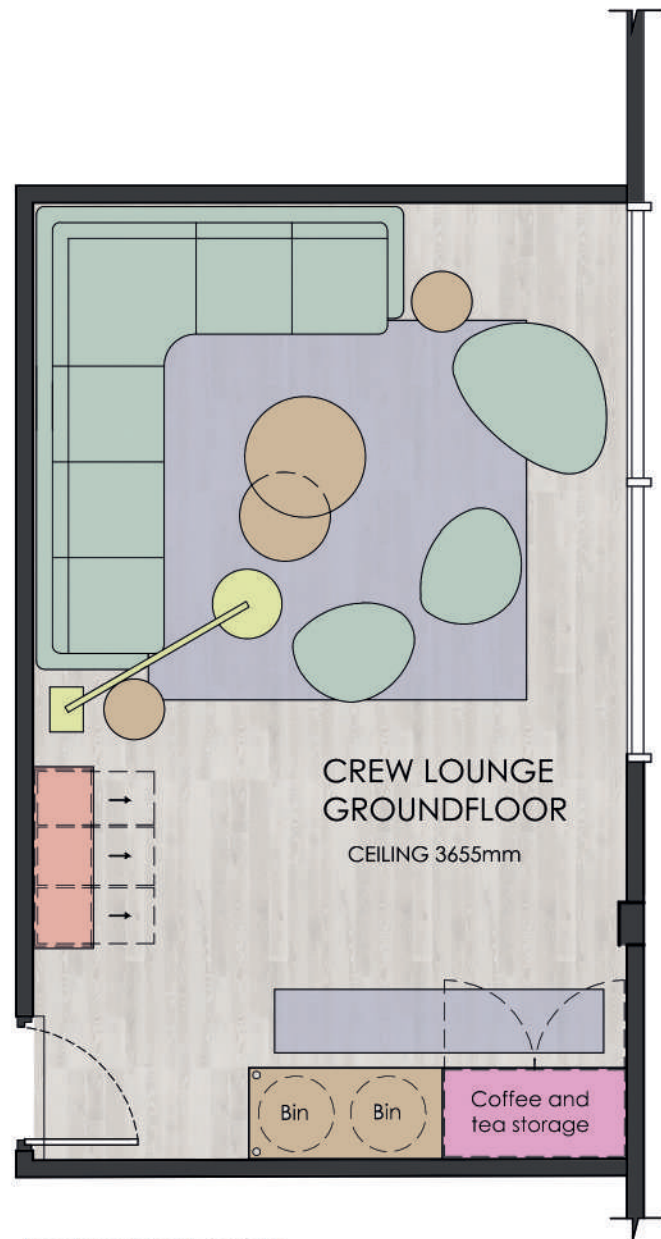
CAST ROOM

CAST ROOM

FURNITURE AND MATERIALS



16. HAUS HERTEX - BALANCE BOULDER RUG IN BLACK 17. HAUS HERTEX - BORA RUNNER IN TYPHOON 18. SUPERBALIST - AVA SIDE TABLE IN WHITE 19. @HOME - 4 SEATER COUCH 20. RHOSIGNS - NEON LIGHT 21. ESQUE - FLOOR LAMP 22. SOFA COMPANY - OTIS IN BUTTERSKOTCH 23. SUPERBALIST - AVA COFFEE TABLE IN GREY 24. SOFA COMPANY - FLORA CHAIR IN VELOUR LUX DARK GREEN 25. HAUS - CIRCULAR GEOMETRIC WALL ART



ATLANTIC STUDIOS
CREW ROOM FLOOR PLAN
SCALE 1:50



CREW ROOM



CREW ROOM COFFEE STATION

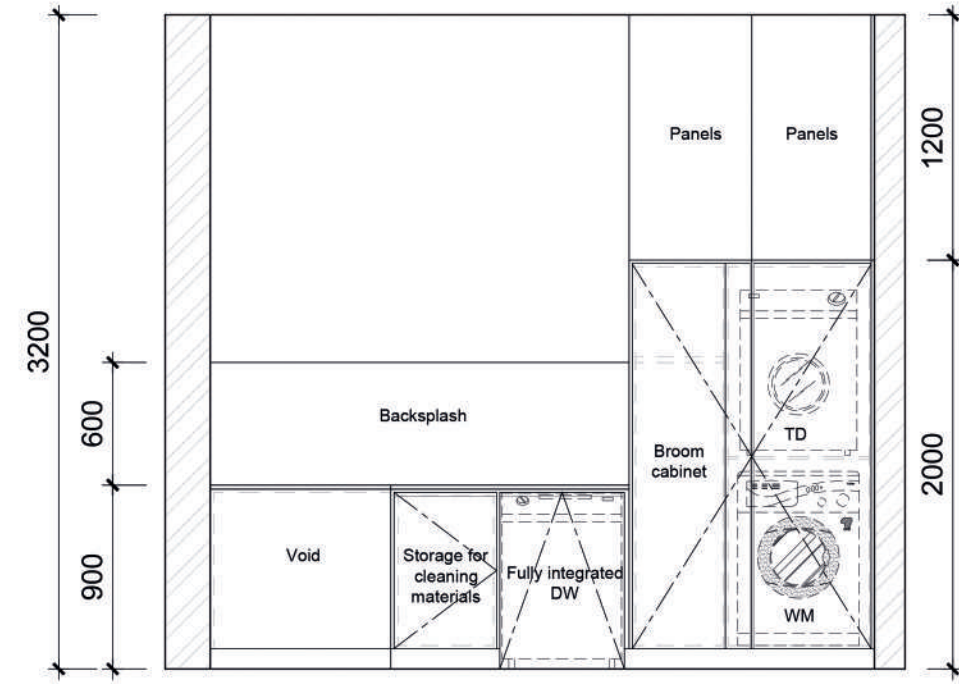
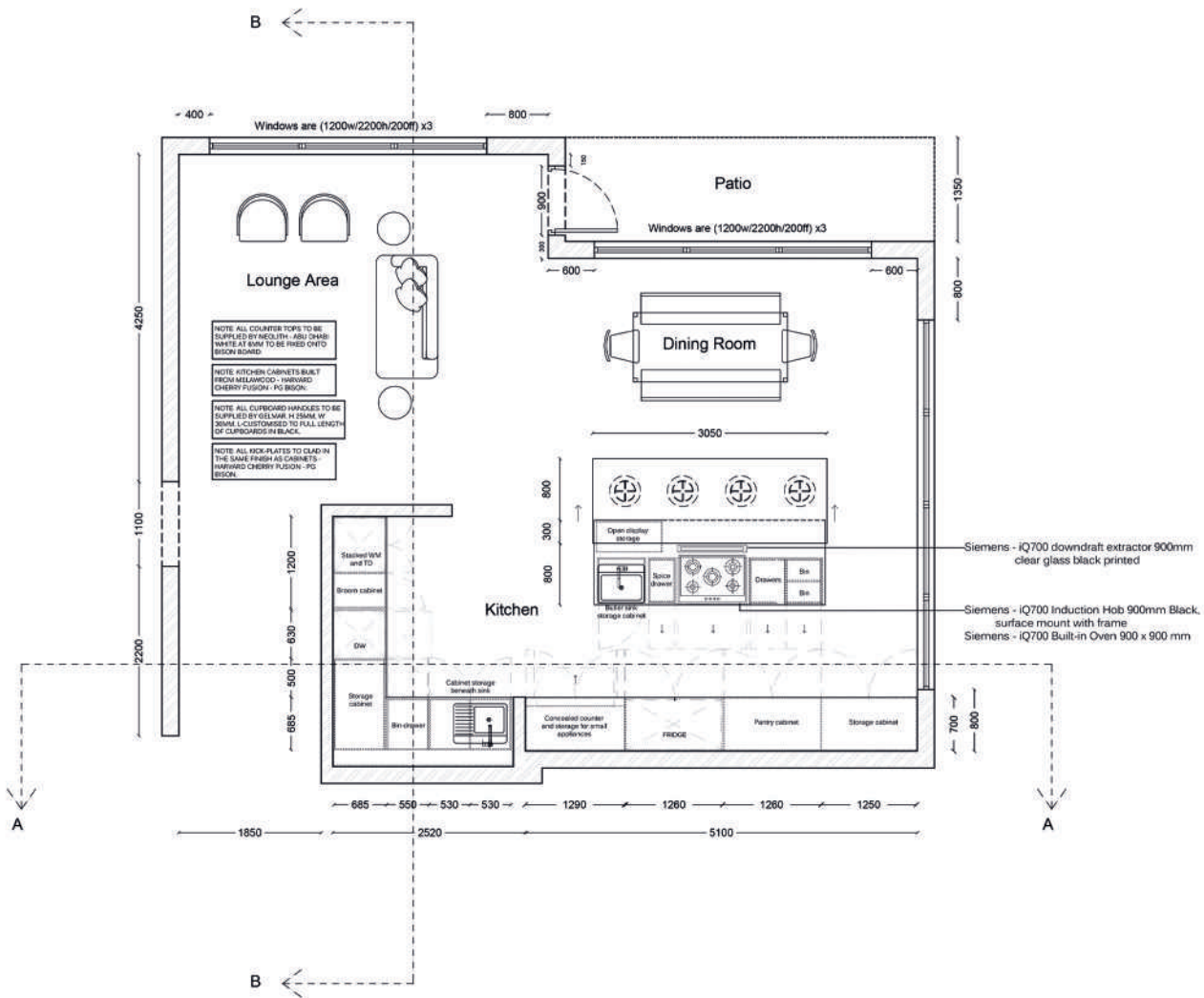
02

KSA

RENNOVATE A HIGH-TECH, MODERN KITCHEN, WITH A LOW BUDGET FOR A SAME SEX COUPLE.

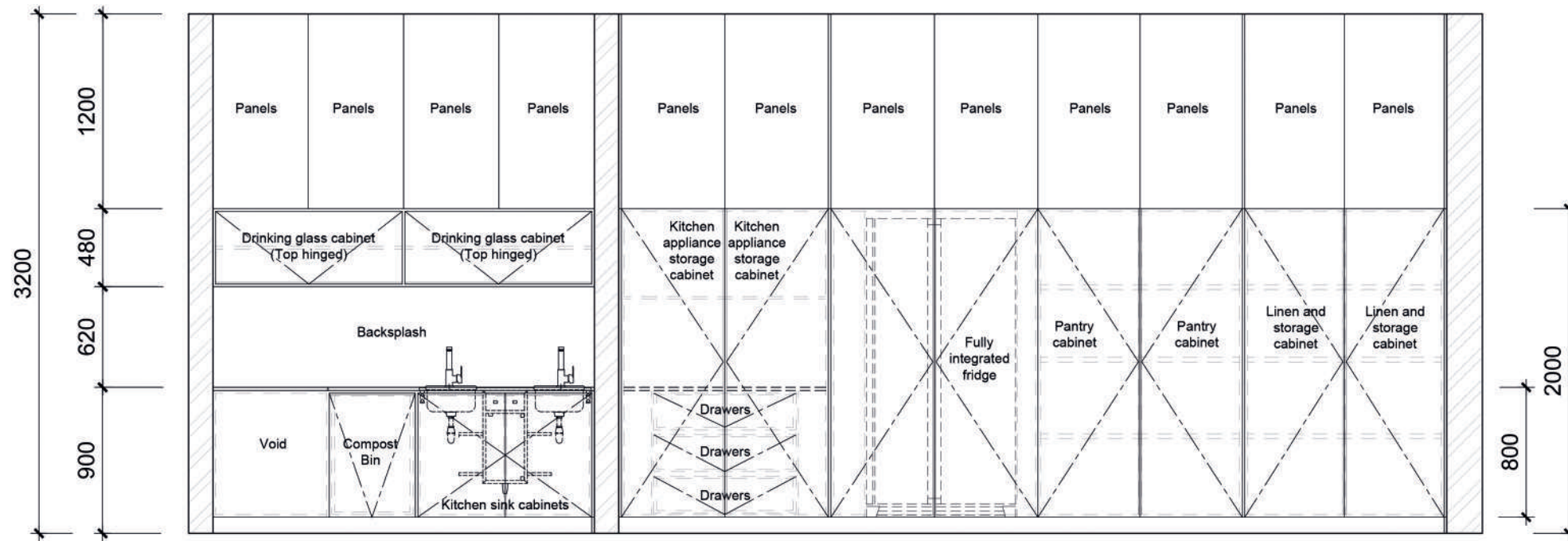
CONCEPT

NOTHING LIKE WALKING INTO YOUR KITCHEN FEELING FRESH WITH THE SMELL OF FRESHLY BREWED COFFEE DOWN THE STREET AND THE VIBEY HOUSE MUSIC SURROUNDING YOU. THIS KITCHEN ENVELOPES THE EXCITEMENT OF OF THE NEIGHBOURHOOD AND THE CALMNESS OF A CUP OF COFFEE.

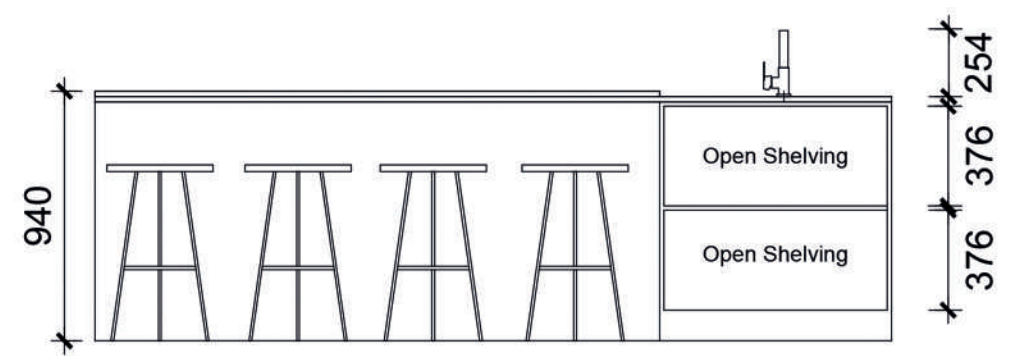
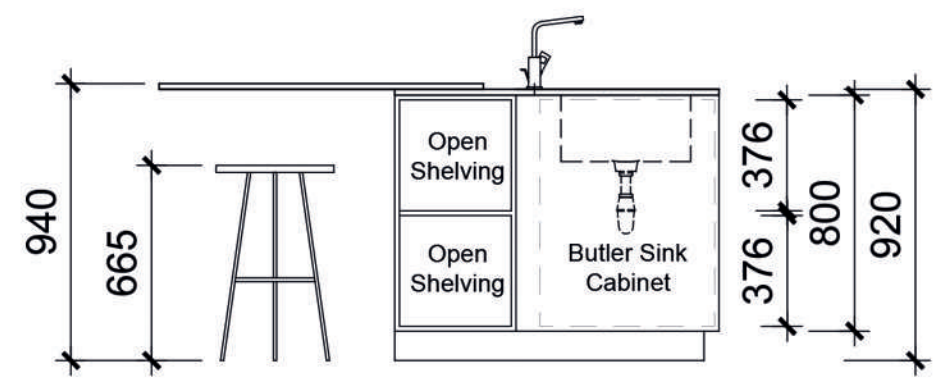
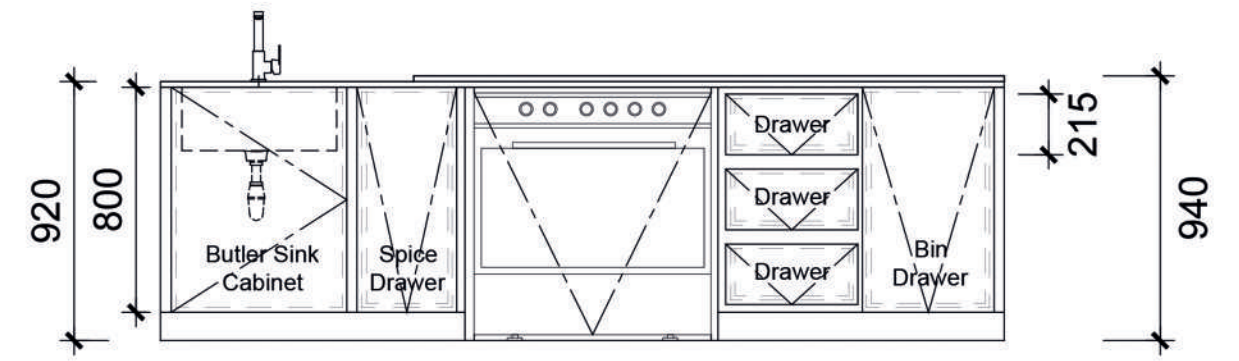
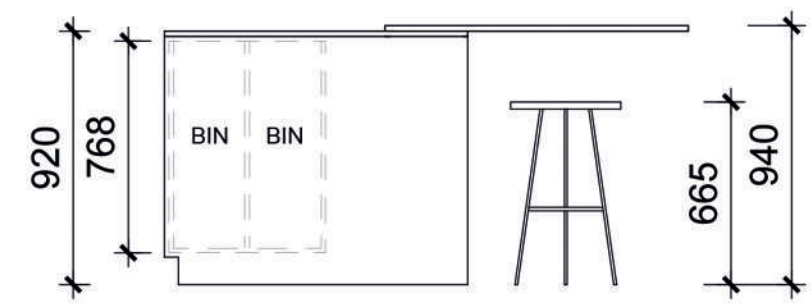
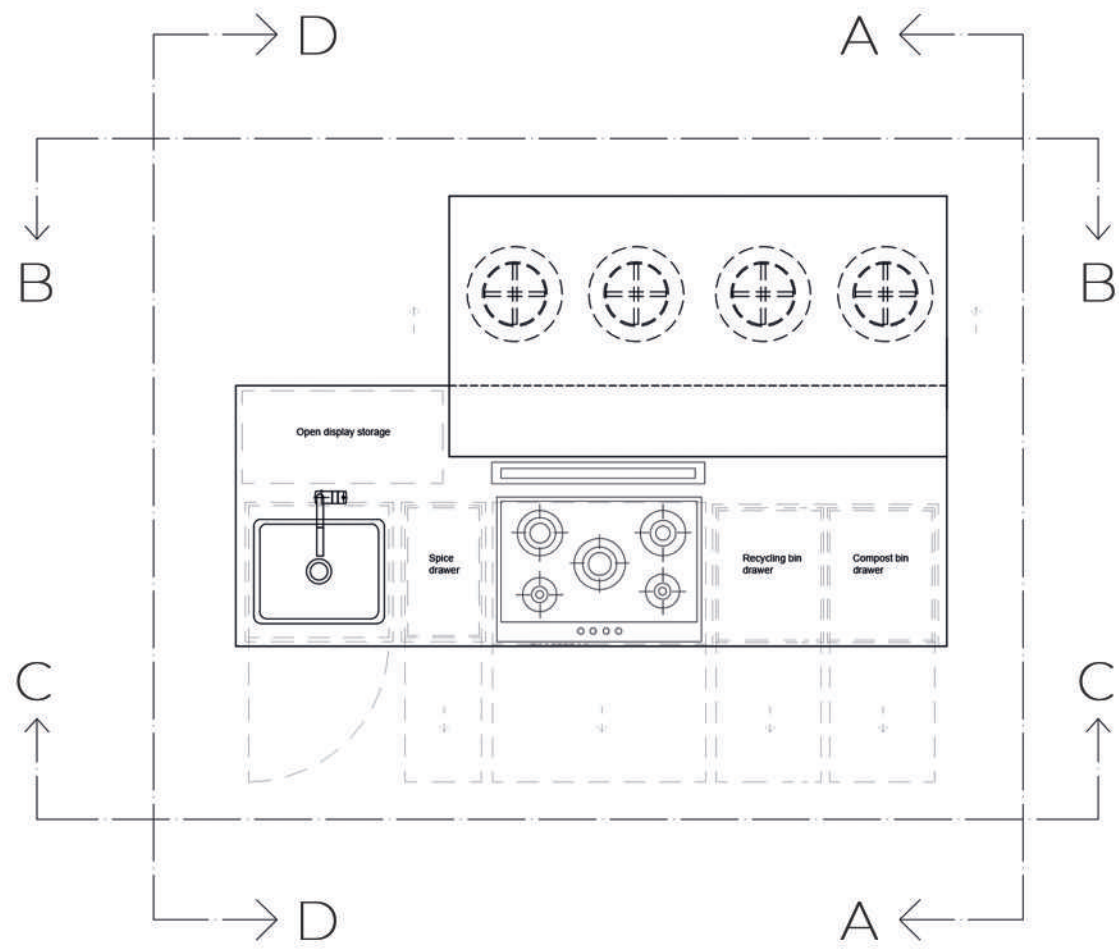


ELEVATION BB | BRIEF 2
NTS

FLOOR PLAN | BRIEF 2
NTS



ELEVATION AA | BRIEF 2
NTS





KITCHEN AND DINING



FRONT OF KITCHEN



ISLAND WITH VIEW



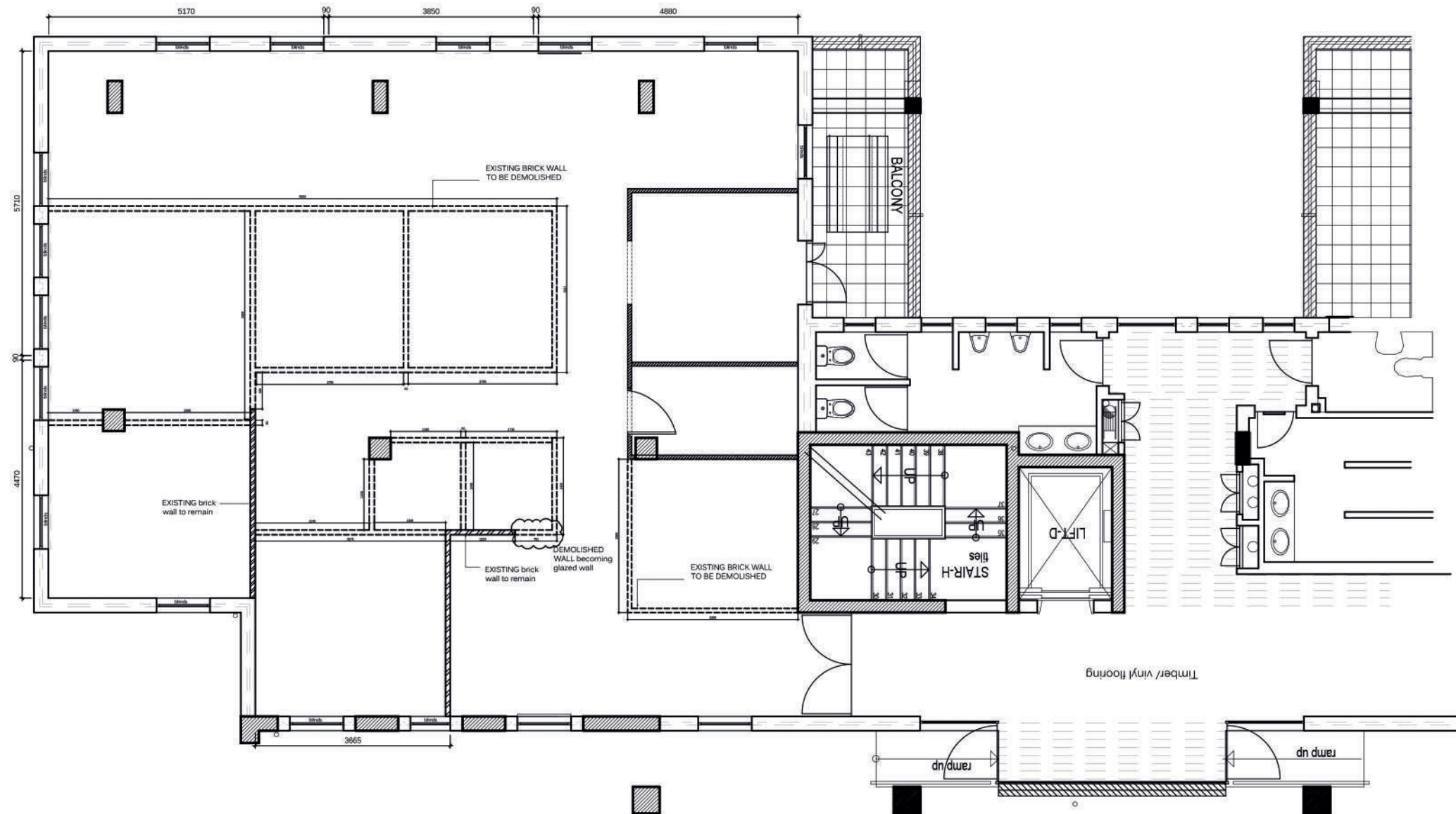
CLOSED ISLAND SIDE



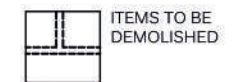
04

TECHNICAL DRAWING PACKAGE

TECHNICAL DRAWINGS FROM A RANGE OF PROJECTS AS WELL AS A BUILDING CONSTRUCTION COMPONENT AND JOINERY DETAILS.



DEMOLISHING LEGEND:



ITEMS TO BE DEMOLISHED



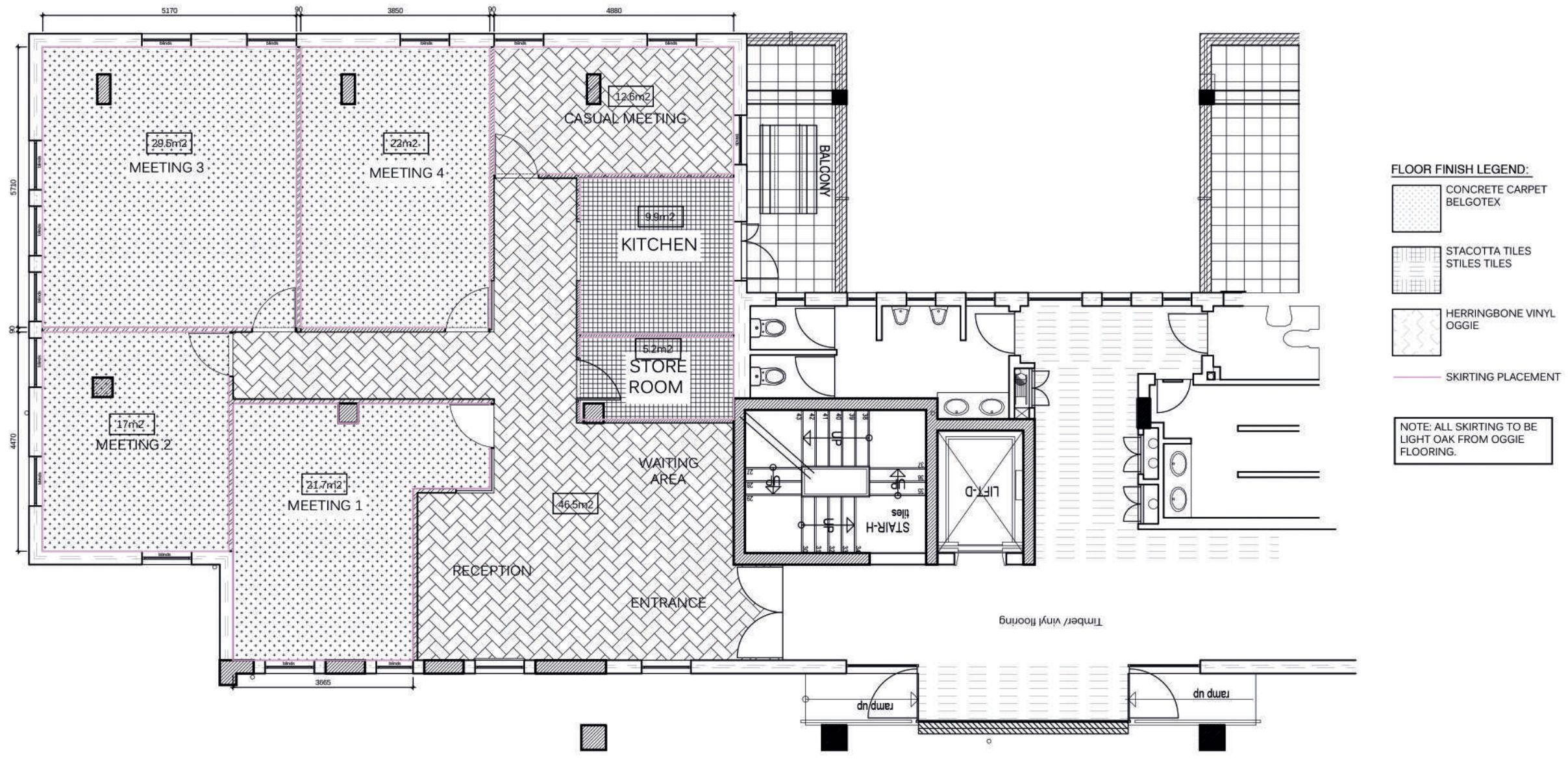
EXISTING BRICK WALLS TO REMAIN



EXISTING DRY WALLS TO REMAIN

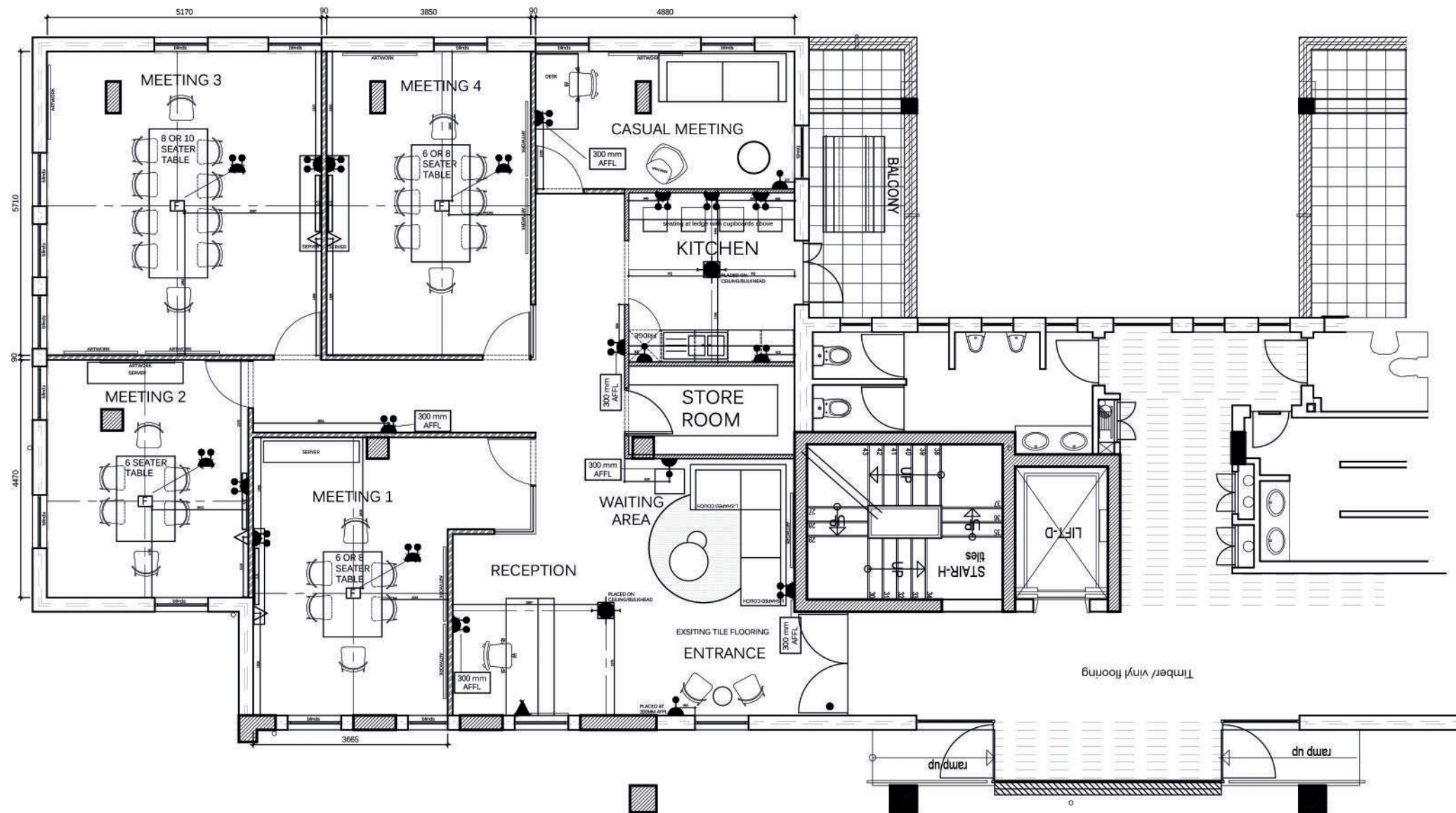
DEMOLITION OF OFFICE FOR NEW CLIENTS
REMOVAL OF OLD MEETING ROOMS

SCALE 1:100



OFFICE FOR NEW CLIENTS
NEW FLOOR FINISHES

SCALE 1:100



ELECTRICAL OUTLET LEGEND:

	16A Due Switched Socket
	16A Single Switched Socket
	WiFi Router
	Data Point
	Telephone Point

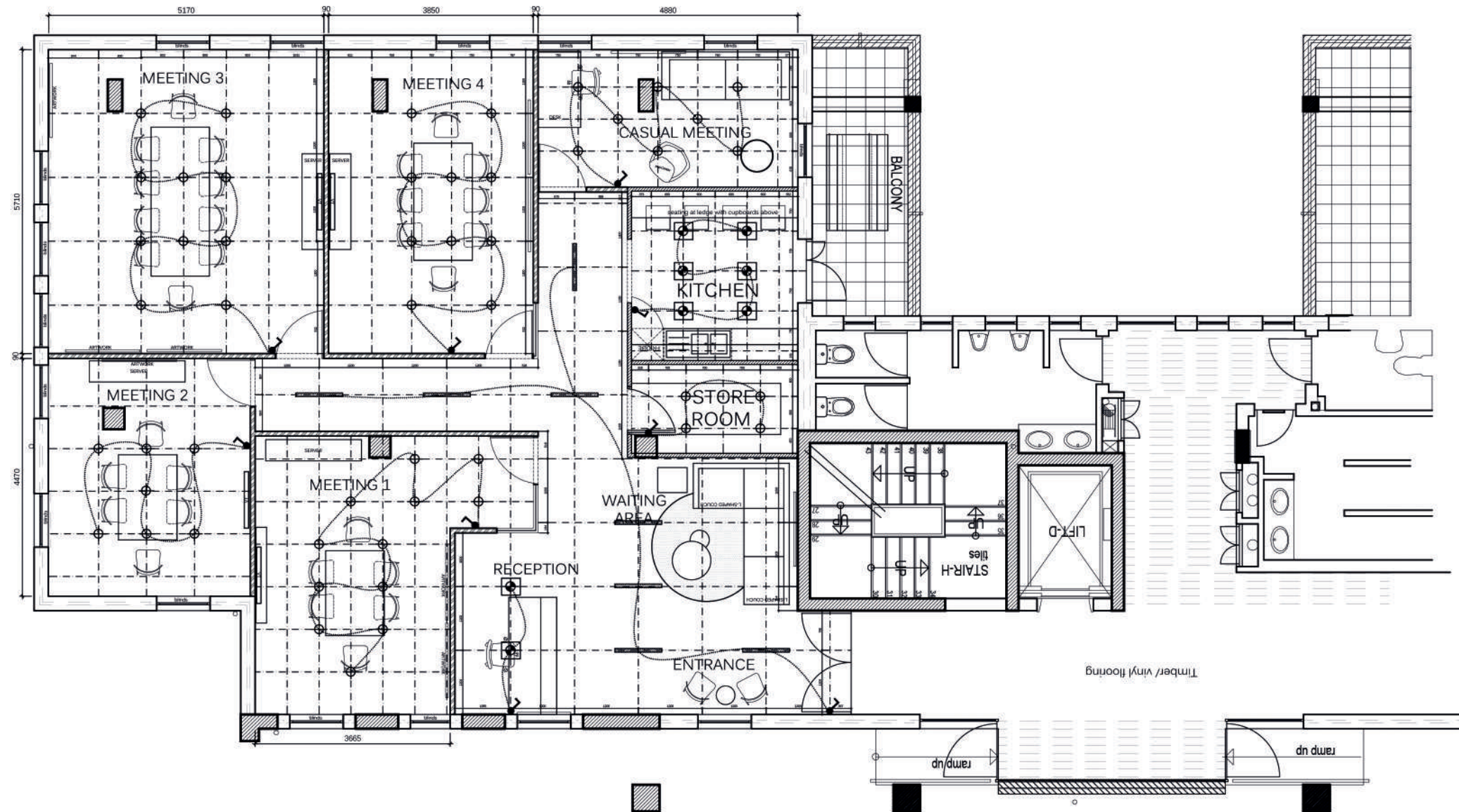
NOTE: ALL PLUGS ON WALLS TO BE 1100mm AFFL UNLESS OTHERWISE SPECIFIED.

NOTE: ALLOW FOR TV'S TO BE CONNECTED TO DATA POINT TO ALLOW FOR SMART ACCESS.

NOTE: ALL SWITCHGEAR TO BE IN WHITE AND SUPPLIED BY SWITCHMAN PVT. LTD.

OFFICE FOR NEW CLIENTS
DATA AND ELECTRICAL

SCALE 1:100

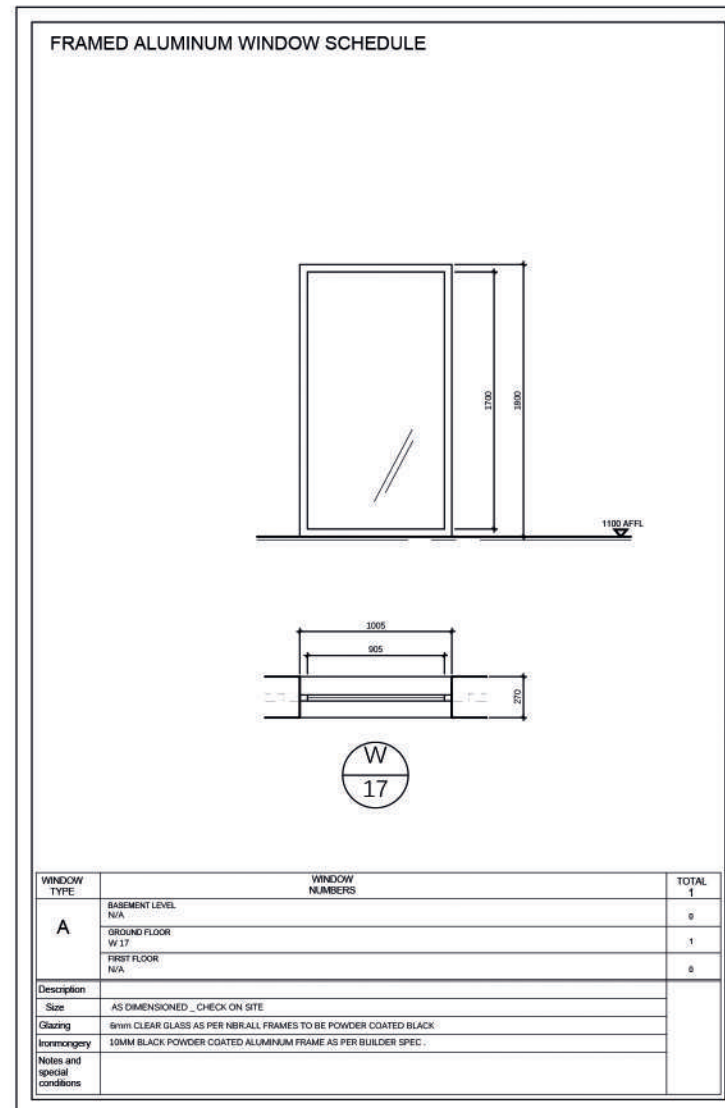


LIGHTING LEGEND:

⊕	<p>Aluminium recessed down lights. SPEC: white fixed round die cast aluminum down lighter with transformer and lamps. CC10 normal white NOTE: all down lighters to be on dimmer switches</p>
⊕	<p>Adjustable down lights in box SPEC: down lighter with transformer and lamps in black box, recessed into ceiling NOTE: all down lighters to be on dimmer switches</p>
—	<p>Compact Fluorescent's SPEC: single 1200mm compact fluorescent within black powder coated channel surface mounted onto concrete soffit. Basal pipes and cable trays where required for wires</p>
⤵	<p>Switch Spec: CLIPSAL white switches</p>

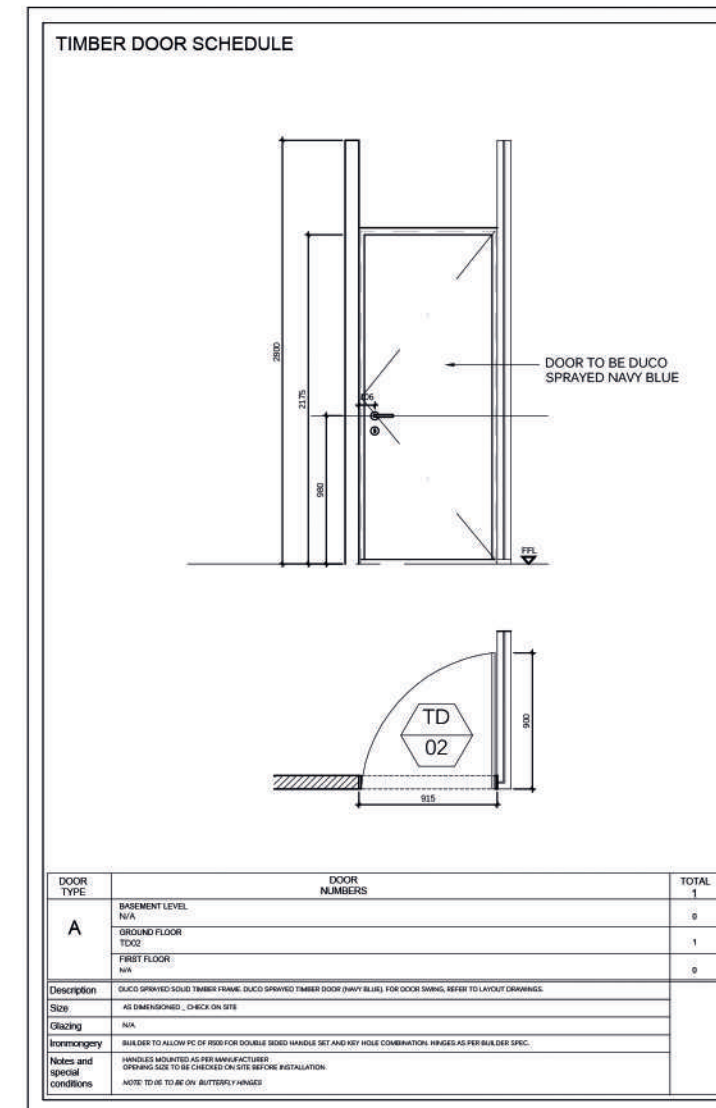
OFFICE FOR NEW CLIENTS
 LIGHTING PLAN

SCALE 1:100



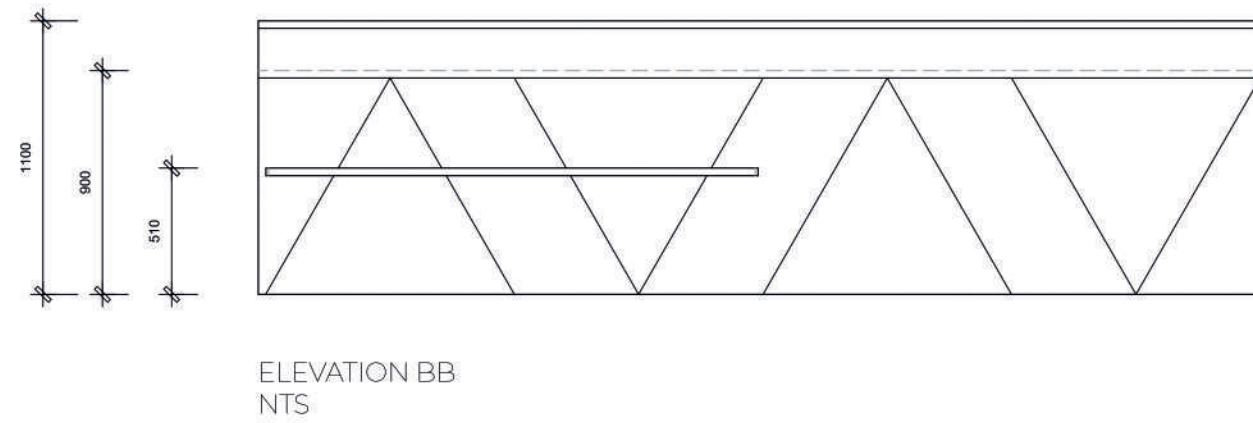
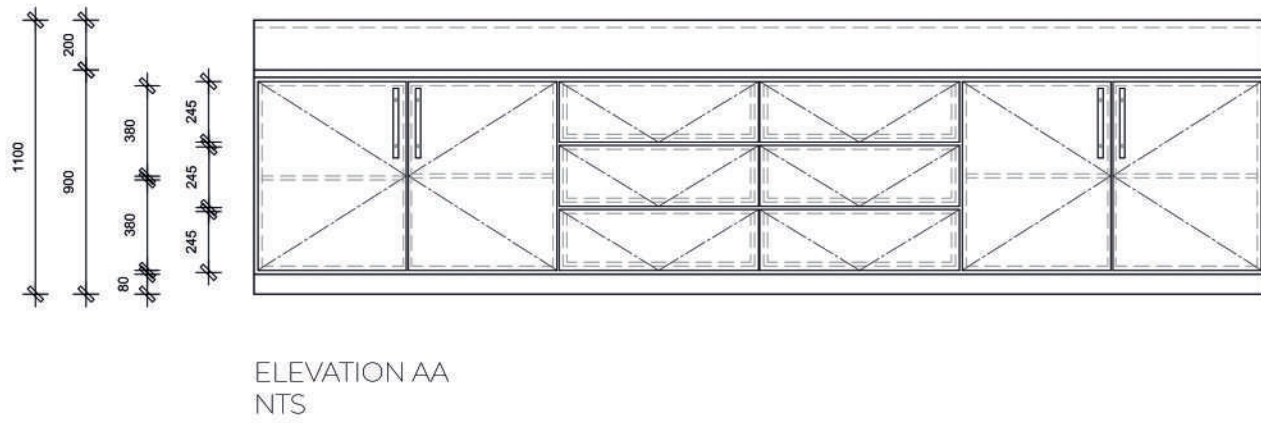
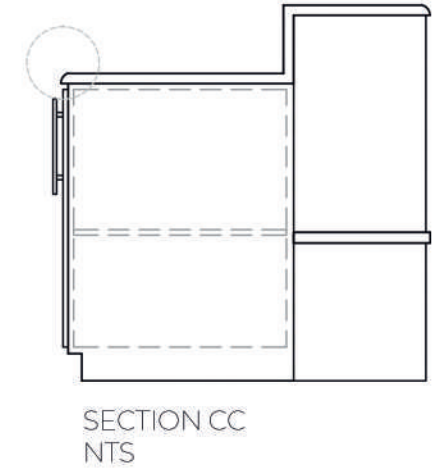
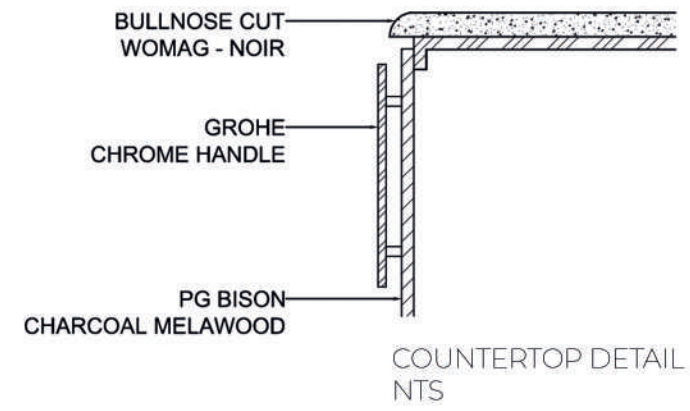
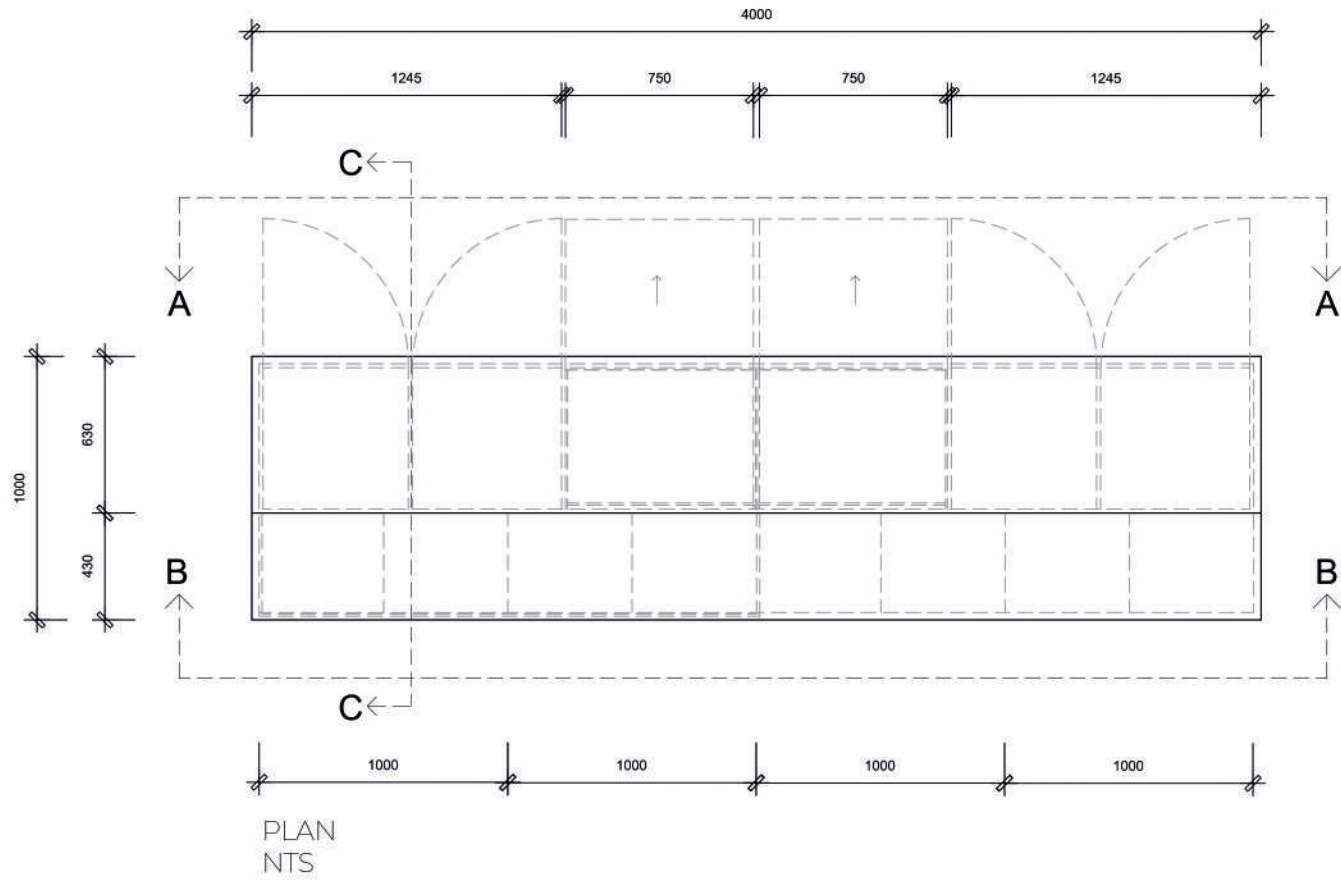
DOOR SCHEDULE

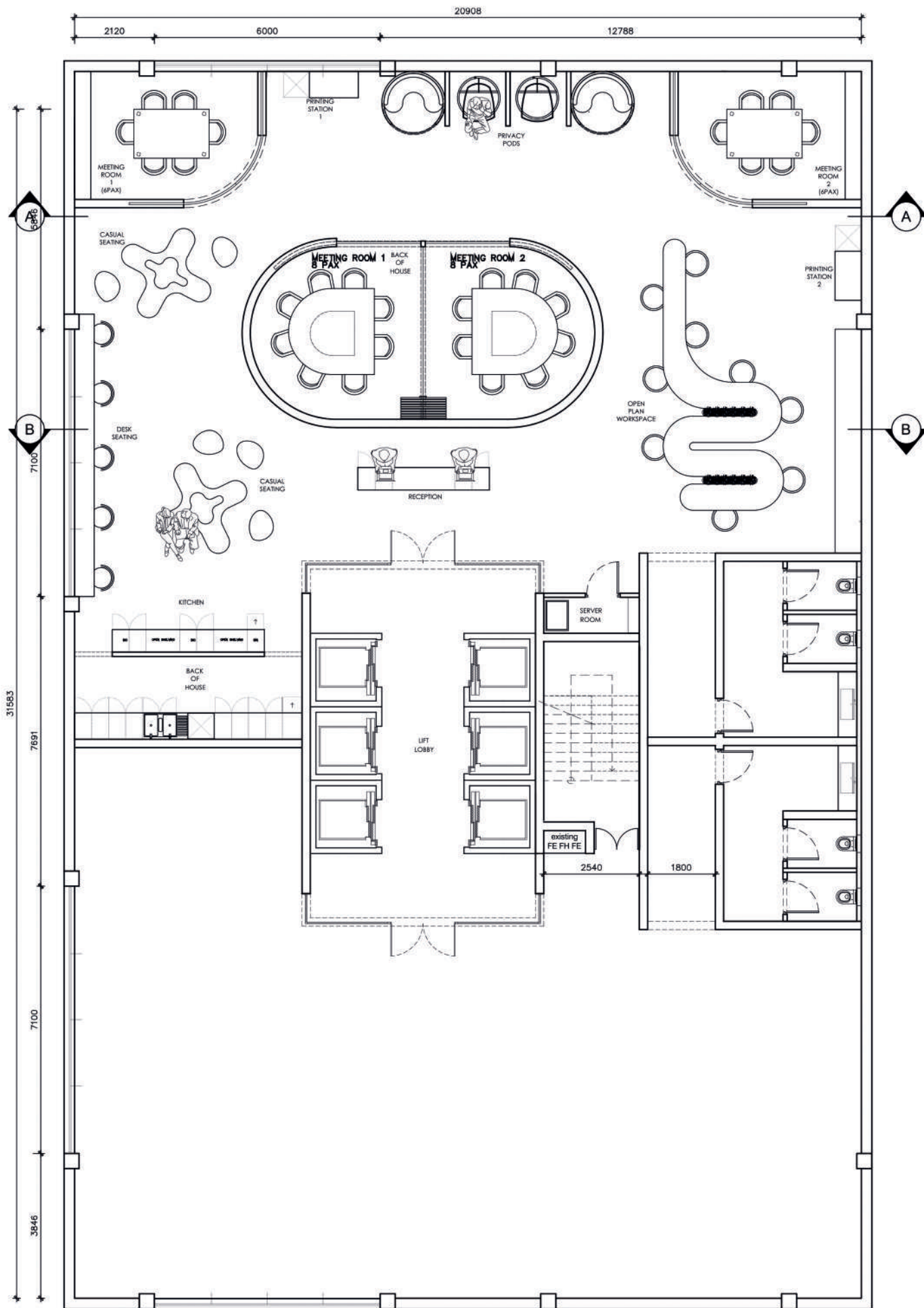
SCALE 1:100



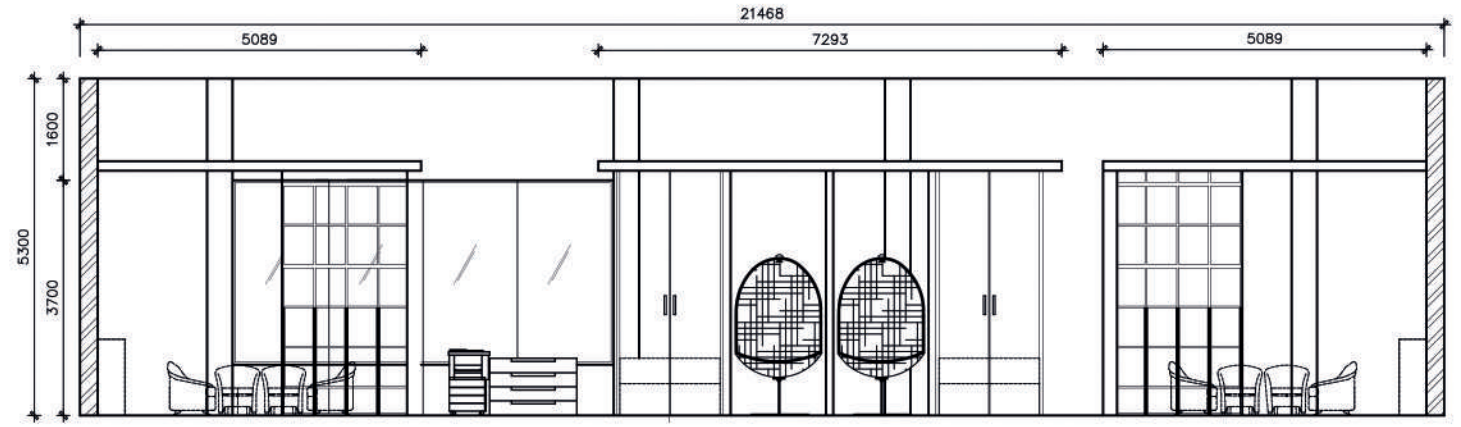
WINDOW SCHEDULE

SCALE 1:100

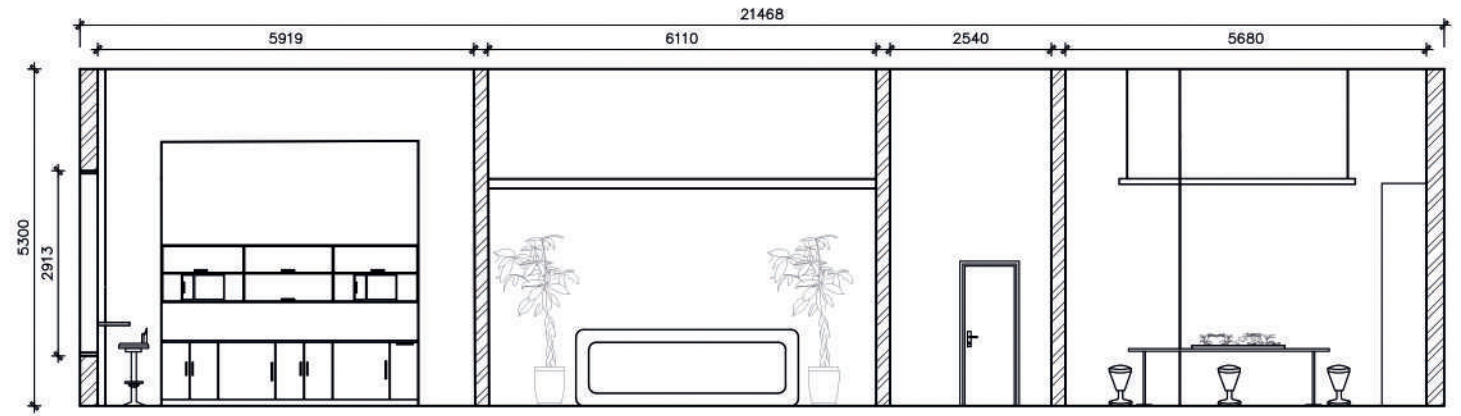




CO-CREATE FLOOR PLAN
NTS



ELEVATION AA
NTS



ELEVATION BB
NTS

05

VINTAGE WITH LOVE

TASKED WITH DESIGNING THEIR NEXT SHOW STOPPING EVENT AT THE CAPE TOWN CRUISE TERMINAL AT THE V&A WATERFRONT.

CONCEPT

FINDING THE BEAUTY IN THE USED OR THE OLD IS WHAT THIS MODERN WORLD IS STRIVING FOR. THE IDEA THAT JUST BECAUSE ITS BEEN USED, DOES NOT MAKE IT UNUSUAL OR BORING, BUT INSTEAD TRENDY AND ONE OF A KIND. INVITING PEOPLE TO THIS UNUSUAL BLEND OF TREND AND VINTAGE IS CREATING A NEW WAY OF THINKING WHICH IS WHAT THRIFTING HAS DONE FOR THE WORLD.



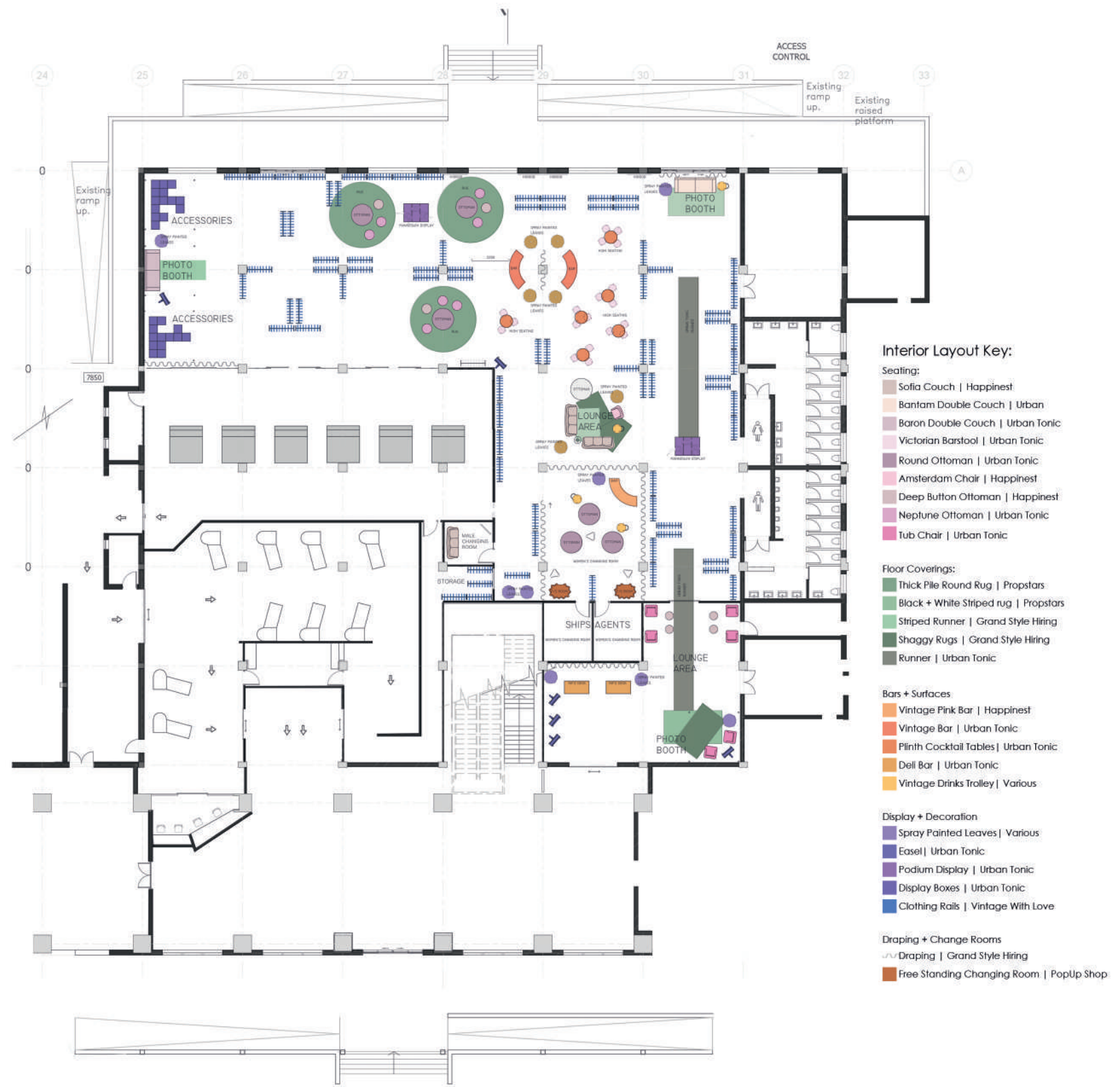
PHOTO BOOTH ONE



LOUNGE AREA



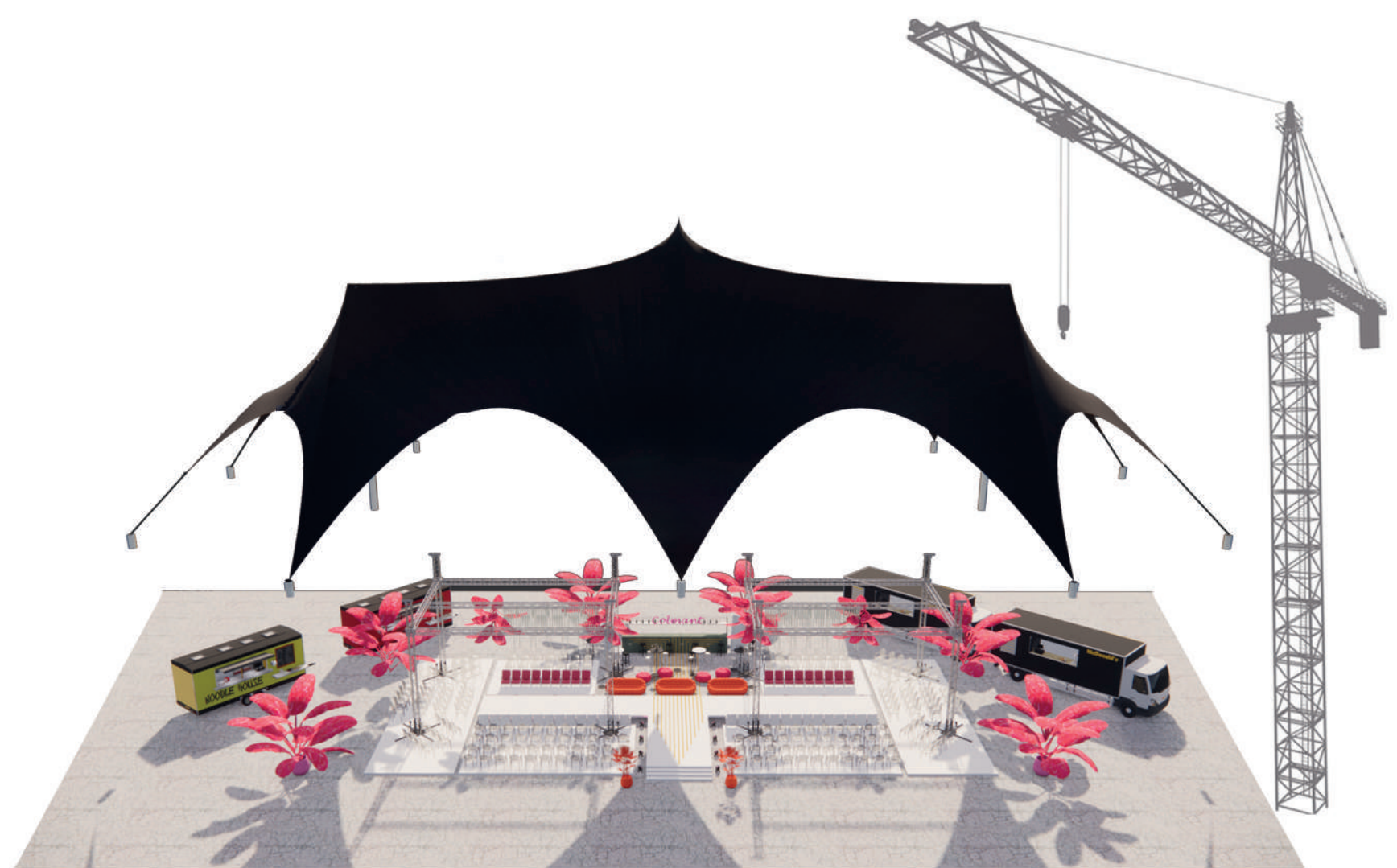
ACCESSORIES DISPLAY



FLOOR PLAN
NTS



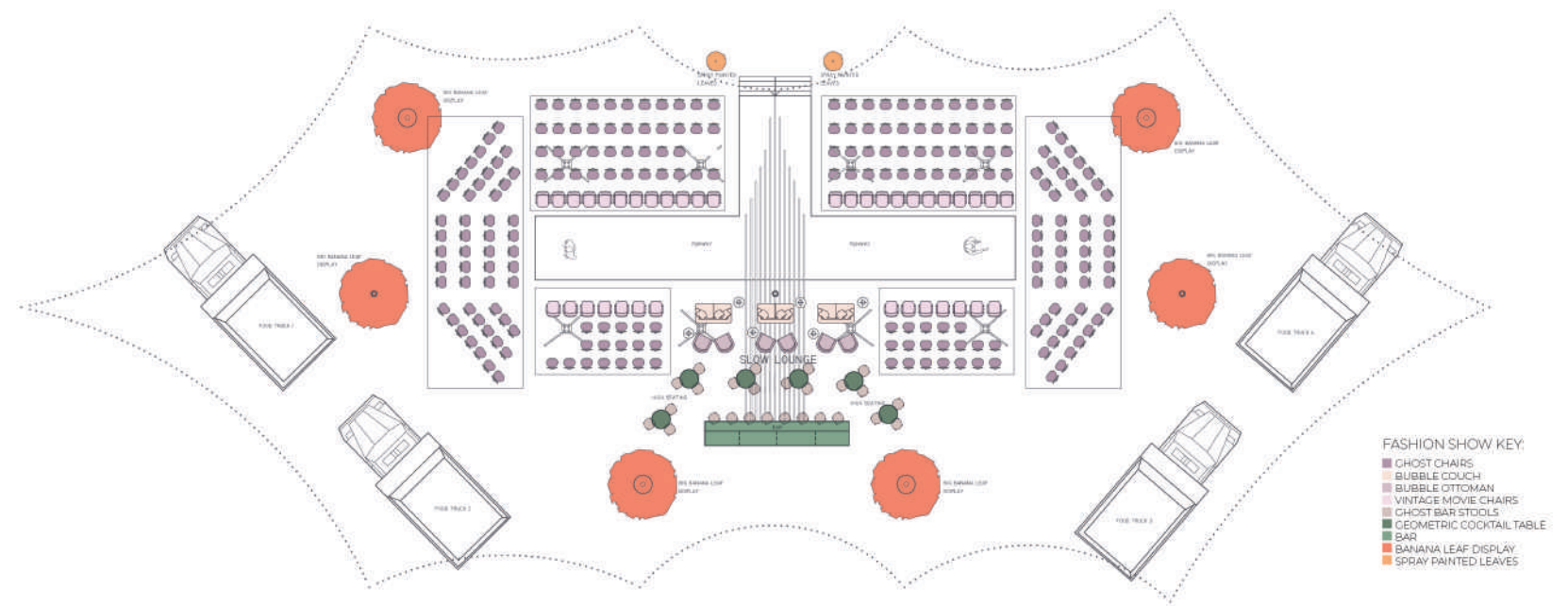
BAR



BAR



START OF RUNWAY



FLOOR PLAN
NTS

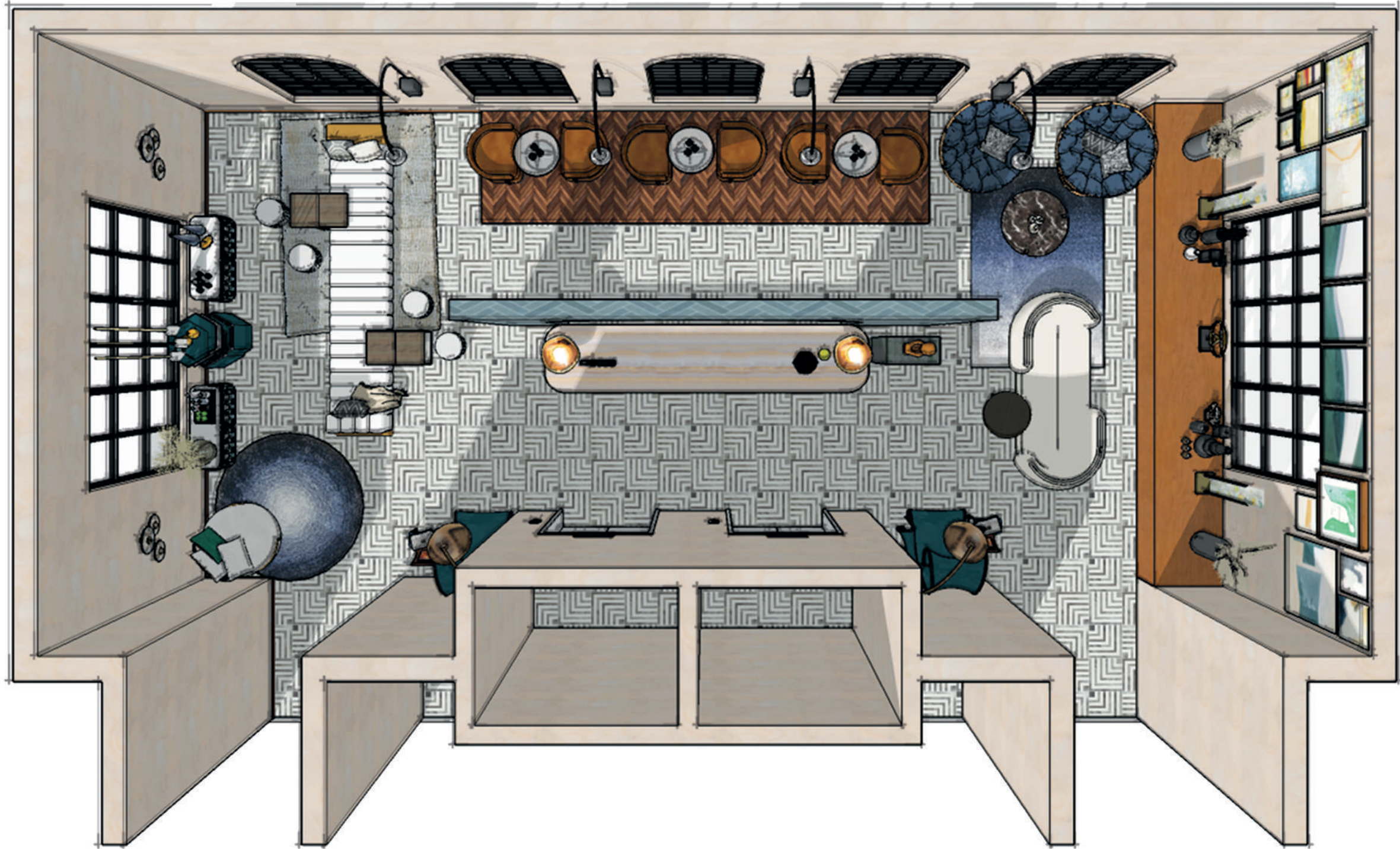
03

DOCK HAUS

CREATE AN ECLECTIC RECEPTION AND LOBBY ON THE TENTH FLOOR OF A HOTEL IN CAPE TOWN CBD.

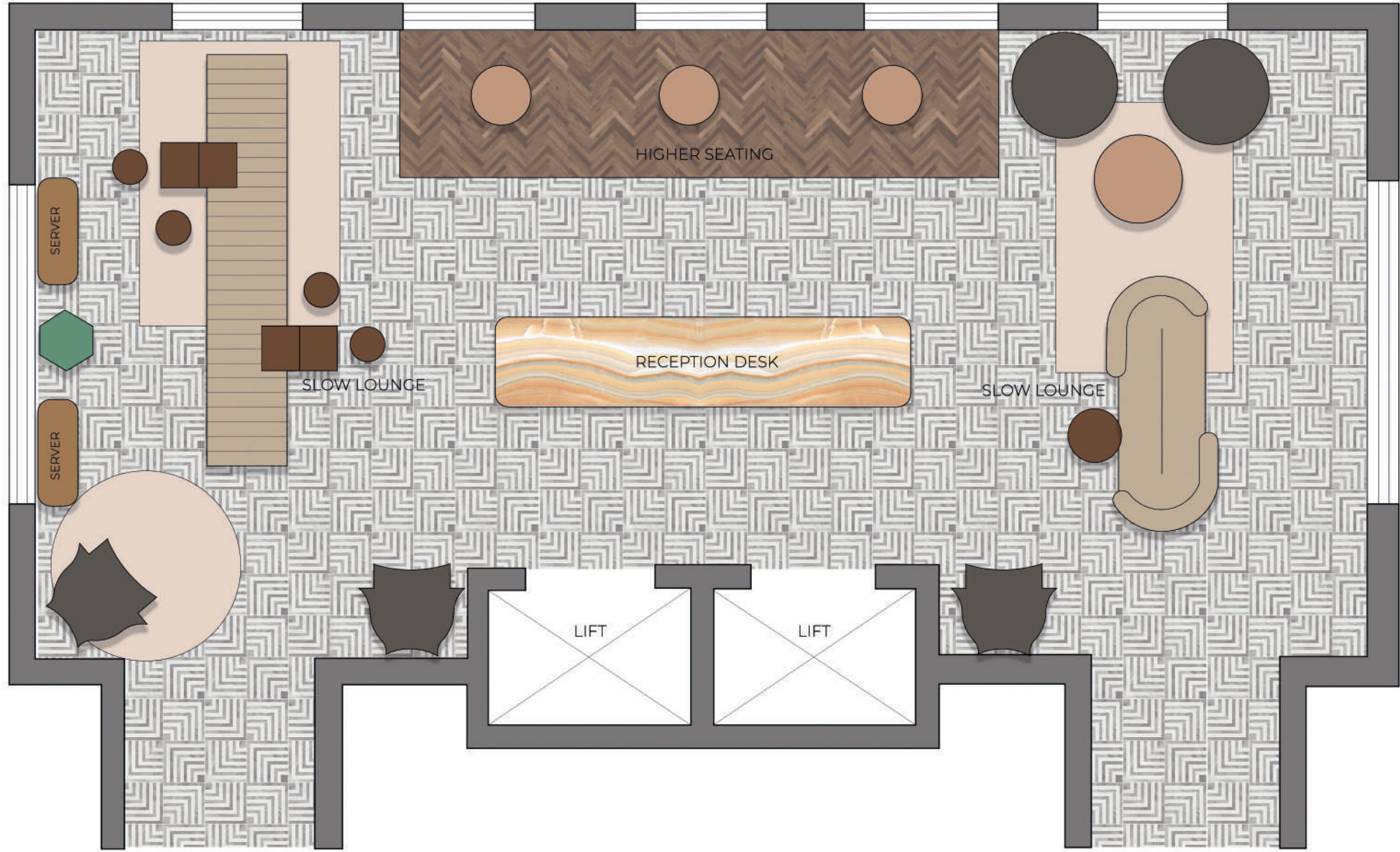
CONCEPT

BAR LOUNGE MEETS BUSINESS. BRINGING TOGETHER BLUES AND BROWNS CREATED A WARM BLEND FOR NOT ONLY THE COLOURS BUT THE BROWNS OF AN IRISH SCOTCH AND THE BLUES OF A CRISP TUXEDO. THE LOBBY ALLOWS FOR PEOPLE IN THE HOTEL TO MIX BUSINESS WITH THE PLEASURE OF HAVING A DRINK NEARBY.



AXONOMETRIC

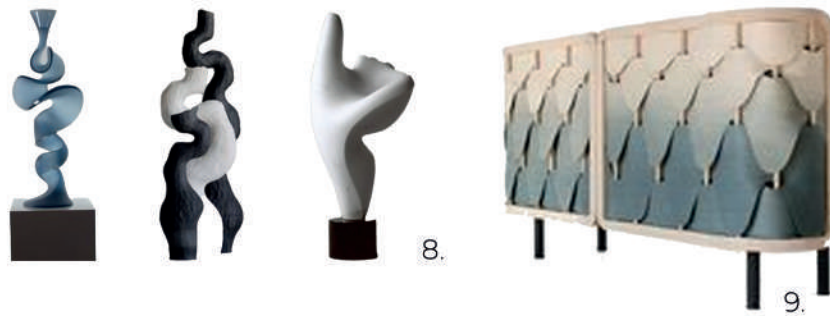
LOUNGE CHAIRS SIDE TABLES RUGS SERVERS LIFT BAR CABINET COFFEE TABLES



FLOOR PLAN
NTS



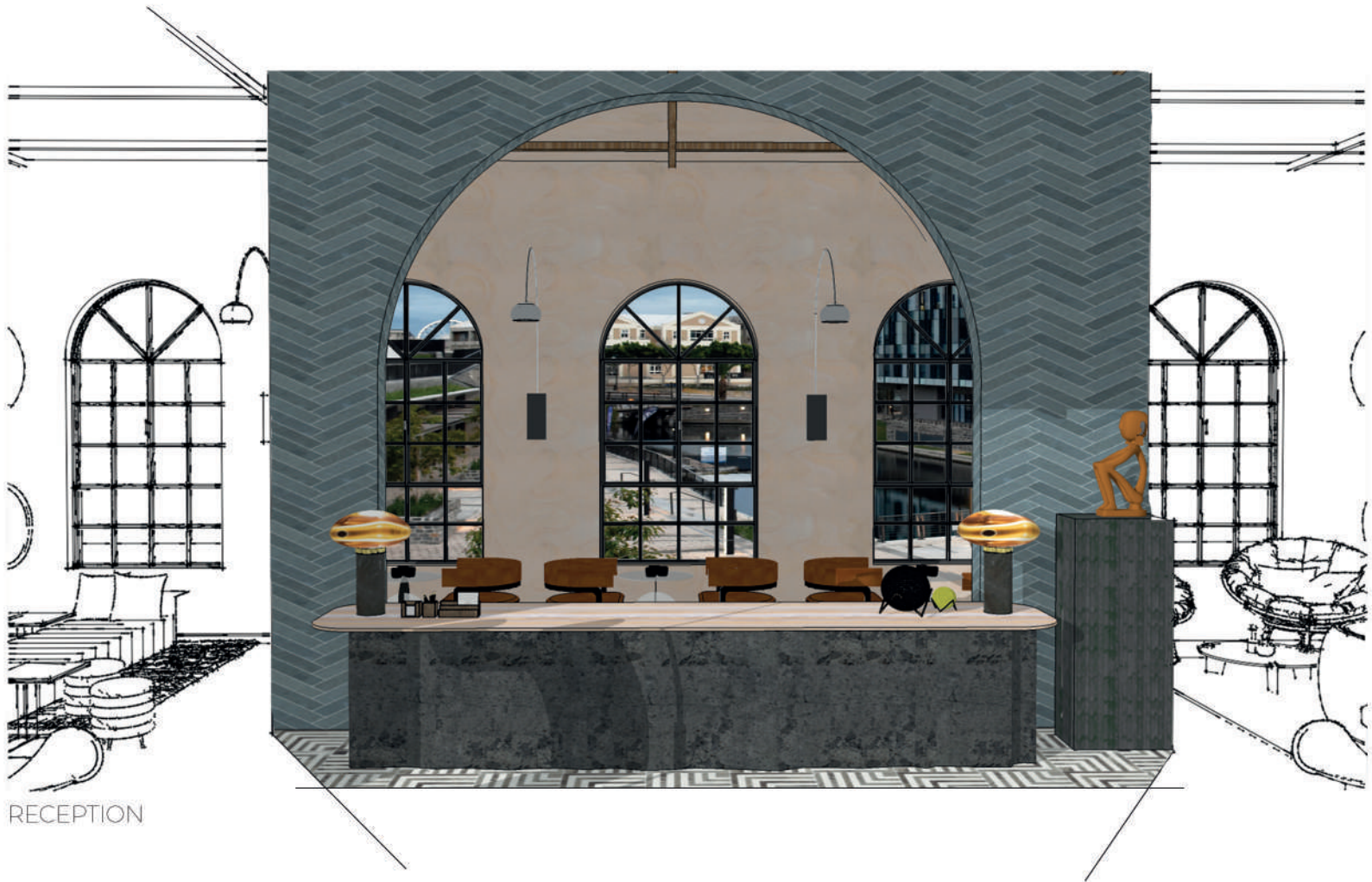
1. GIORGETTI LADY ARMCHAIR 2. KELLY WEARSTLER LAUREL STOOL 3. ARCHIOLOGY FLOOR LAMP
4. APPARATUS MEDIAN WALL LIGHTS



5. ROCHE BOBOIS LIFT BAR CABINET 6. PIERRE AUGUSTINE CONFIDENT SOFA 7. KELLY WEARSTLER LAUREL STOOL
8. MIXED SCULPTURAL ART 9. CUSTOM SERVER



ELEVATOR CHAIR



RECEPTION



SLOW LOUNGE



AXONOMETRIC

05

DESIGNER'S APARTMENT

CREATE A "CAPSULE FOR LIVING" TO SUIT YOUR CLIENT'S NEEDS. A SPACE FOR LIVING, EATING, SLEEPING, WASHING AND RELAXING. YOUR CLIENT IDEALLY WANTS TO USE THE SPACE AS A SANCTUARY – A PLACE OF ESCAPE AFTER A HARD DAY'S WORK.

CONCEPT

CECILE TILLEY WAS MY DESIGNER OF CHOICE, AND WHY NOT FILL HER SPACE WITH HER OWN CREATIONS. BEING ABLE TO RELAX IS DIFFICULT IF YOU ARE NOT COMFORTABLE. THIS SPACE IS WARM AND FILLED WITH CECILE'S HUGGING TOUCH.



FLOOR PLAN
NTS



06

ELLERMAN HOUSE HOTEL

PHOTOGRAPH AN INTERIOR SPACE,
ARCHITECTURAL ELEMENT AND A
DETAILED/ZOOMED IN IMAGE



ARCHITECTURE



INTERIOR



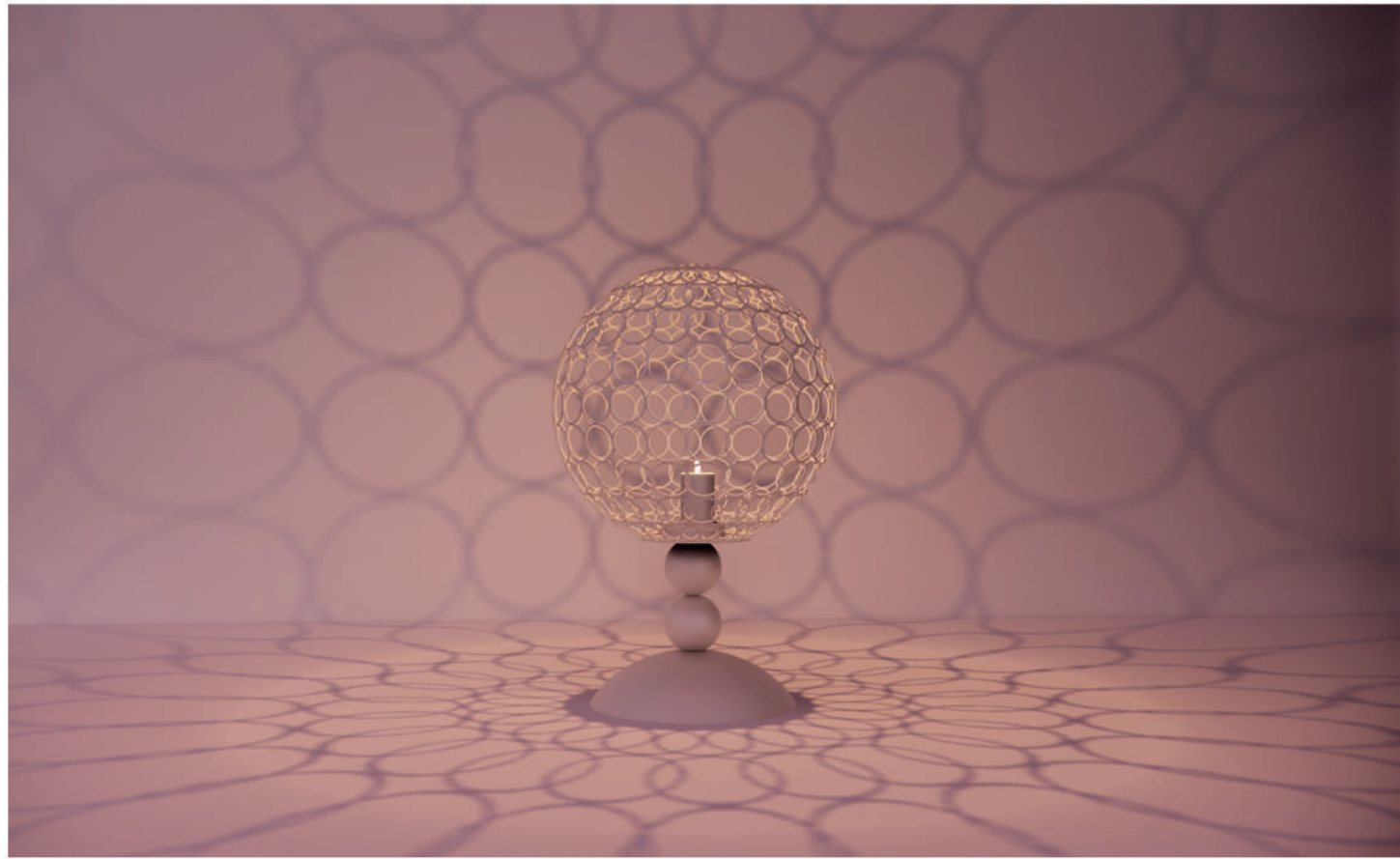
DETAILED



09

PRODUCT DESIGN - CANDLEABRA

UPCYCLE AND BREATHE NEW LIFE, INTO A SIMPLE TIMBER STOOL. THIS PROJECT PROVIDES YOU WITH THE OPPORTUNITY TO TRANSFORM YOUR SELECTED STOOL INTO SOMETHING FRESH, RELEVANT AND EXCITING.



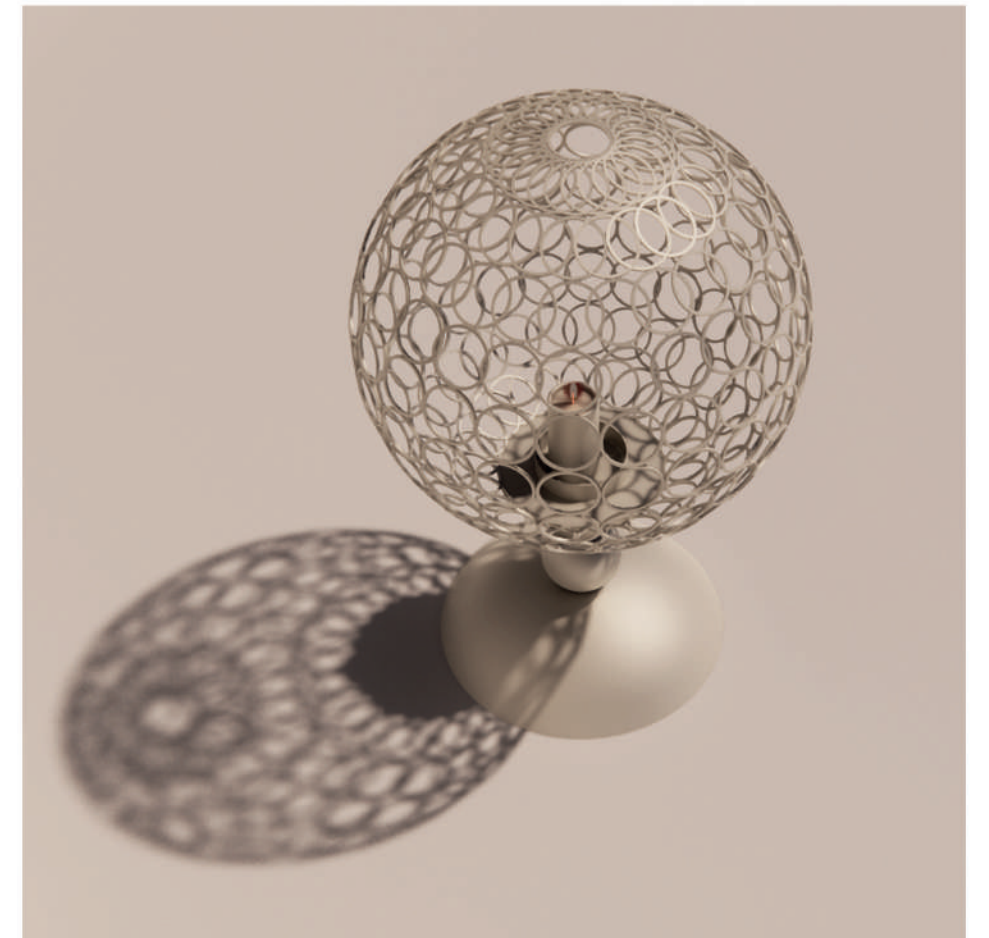
CANDLE LIT



TOP VIEW



SIDE VIEW



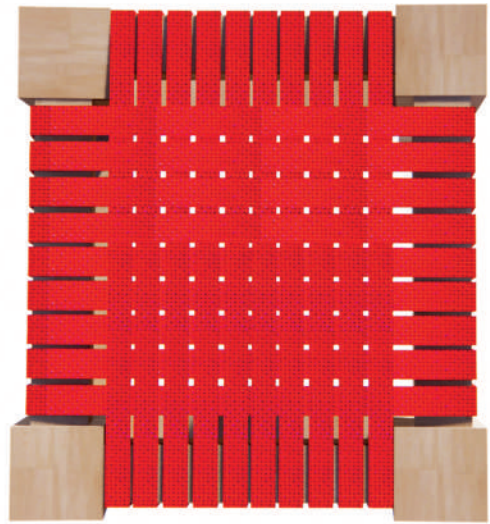
PERSPECTIVE



10

PRODUCT DESIGN - STOOL

UPCYCLE AND BREATHE NEW LIFE, INTO A SIMPLE TIMBER STOOL. THIS PROJECT PROVIDES YOU WITH THE OPPORTUNITY TO TRANSFORM YOUR SELECTED STOOL INTO SOMETHING FRESH, RELEVANT AND EXCITING.



TOP VIEW



SIDE VIEW



PERSPECTIVE

