



INTERIOR DESIGN

2020 PORTFOLIO

ISABELLE EDMONDSON  
[i.edmondson@icloud.com](mailto:i.edmondson@icloud.com)



# CONTENT

PG BISON.....	PAGE 1-3
BOXED.....	PAGE 4-7
STACKS.....	PAGE 8-10
VIBRANCY.....	PAGE 11-14
CAESARSTONE.....	PAGE 15-17
PHOTOGRAPHY.....	PAGE 18-19
CAPSULE HOTEL.....	PAGE 20-25
APARTMENT 601.....	PAGE 26-29



PG BISON



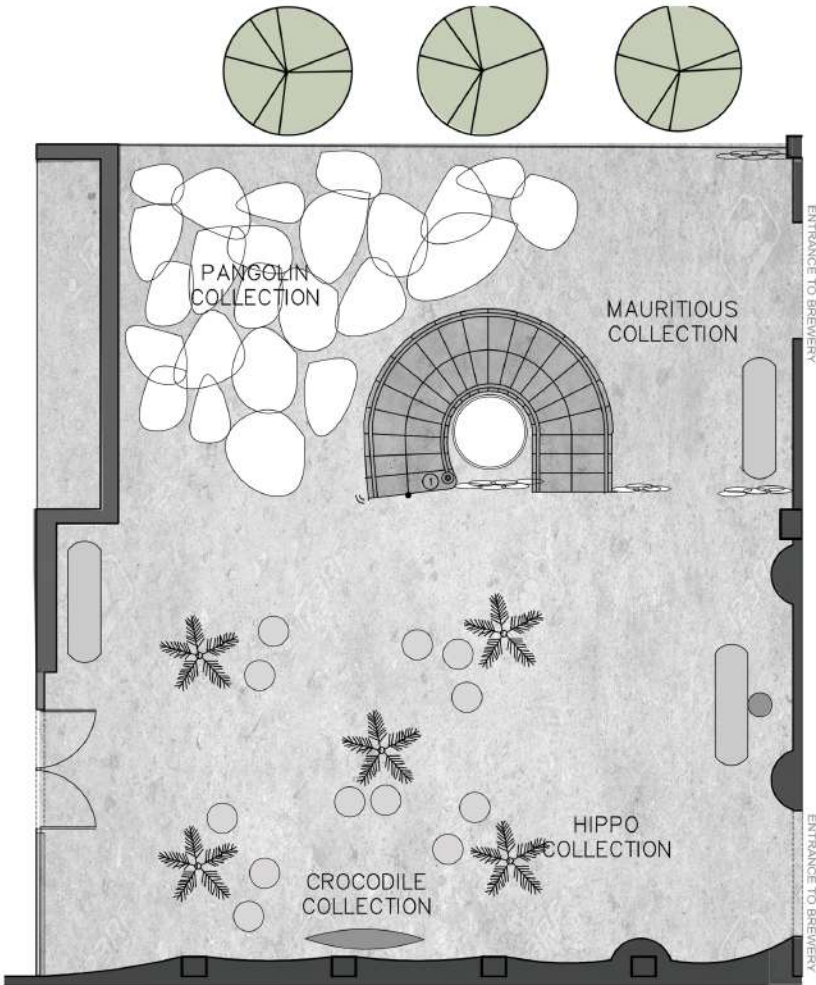
# PATRICK MAVROS

LONDON MAURITIUS HARARE

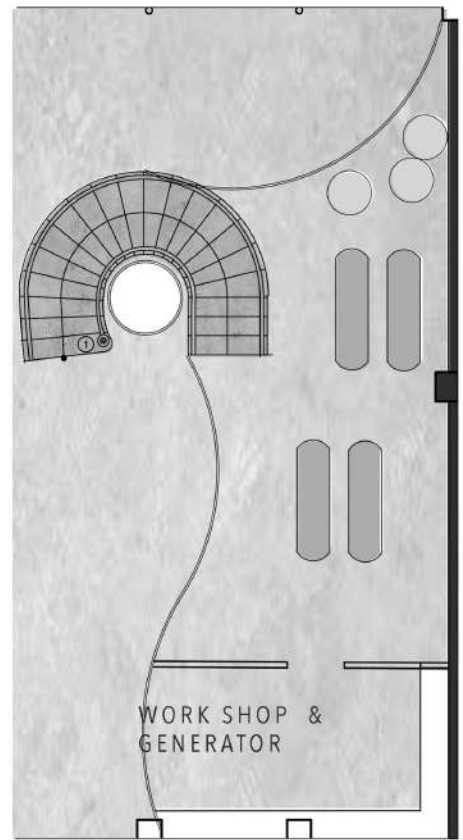


Patrick Mavros is a well known African Family business whose unique luxury products and experiences represent a safari of adventure, romance and above all unquestionable quality. Much of Patrick's profits of his pangolin collection is contributed to the The Tikki Hywood Trust which contributes to the safety of the endangered pangolin. The "new normal" is being able to express ones beliefs and values in such a way it sets a ripple effect on everything around and creates a change far greater seen, and rather felt. My space reveals this through its "exploded" elements of Patrick's designs revealing the true story of each piece of jewelry without having to look so close. Elements in my space contribute to the vulnerability humans have on the environment and the "brokenness" effect of the consequences, with this the environment can still learn and adapt as shown in the first element of the "upside down" tree. As well as this, an experience using the pangolin scales represents an informative to people of how each action creates a change that cannot be adjusted. Once it is broken, it cannot be fixed. Once it is made vulnerable, it cannot be safe. Once it is extinct, it will never be brought back.

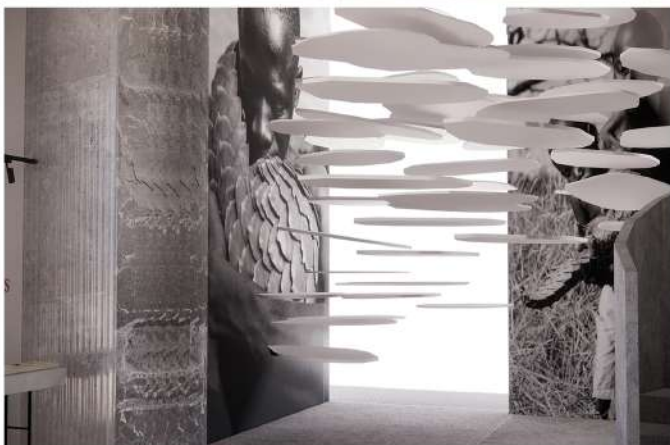




FLOOR PLAN (NTS)



2ND LEVEL FLOOR PLAN (NTS)



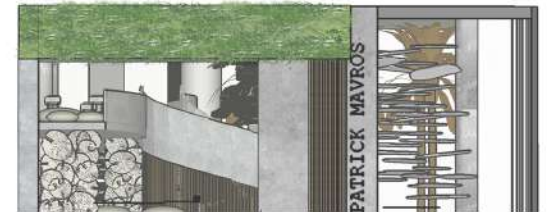
THE PANGOLIN EXHIBITION



FIRST IMPRESSION PERSPECTIVE



MEZZANINE LEVEL



SIDE ELEVATIONS



MAURITIAN COLLECTION





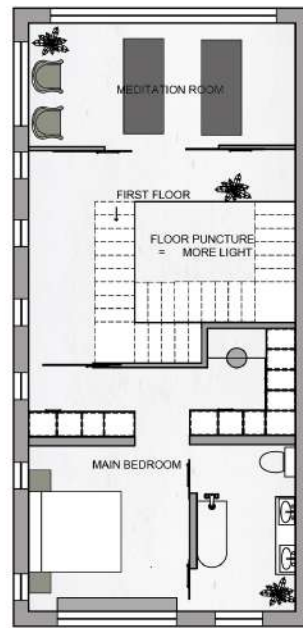
BOXED







GROUND FLOOR (SCALE - 1:100)



1ST FLOOR (SCALE - 1:100)



FIRST IMPRESSION ENTRANCE ENTRANCE

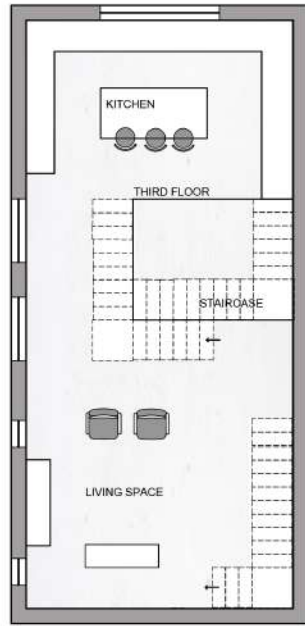
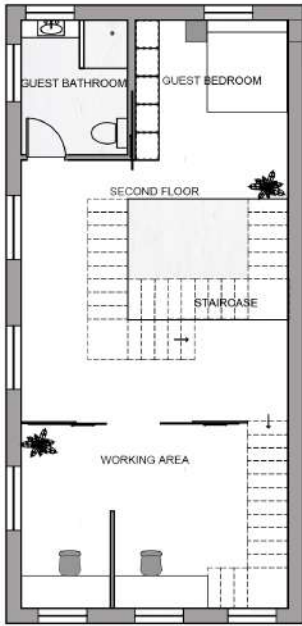


AIR BNB



AIR BNB





2ND FLOOR (SCALE - 1:100)

3RD FLOOR (SCALE - 1:100)



MAIN BEDROOM & BATHROOM

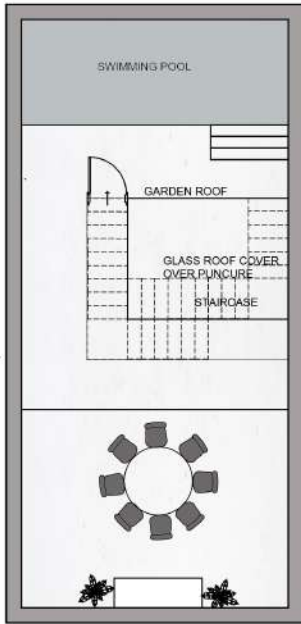


KITCHEN



LIVING ROOM





ROOFTOP (SCALE - 1:100)

SITE ANALYSIS



ELEVATION 1 (1:100)

ELEVATION 2 (1:100)



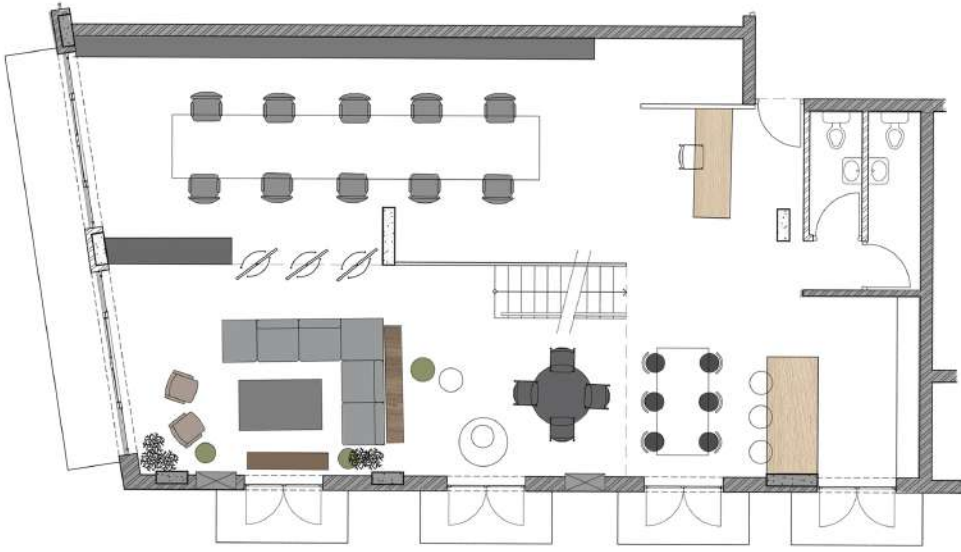


STACKS

# STACKS

My concept for Stacks offices was to create a space where an instant desire to try new ideas, be creative, have a fresh mentality and enjoy each working day was my main focus. In the shipping industry, an industrial vs. modern life comes to mind, thus seen throughout my design I incorporated a trendy yet sophisticated space which represents the day to day work life in the office. I decided to choose Tanzanian art as it is a part of African roots yet it resembles a sense of an exotic feel and a different aspect of Africa- I felt this is a good concept to use in a competitive industry.





FLOOR 1 - PLAN 1:50



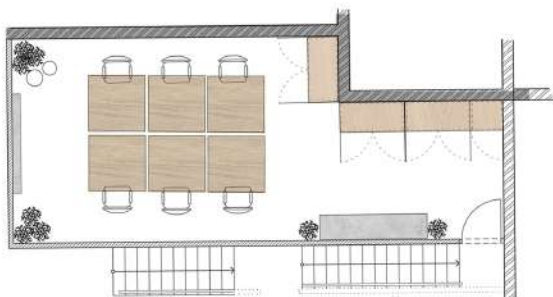
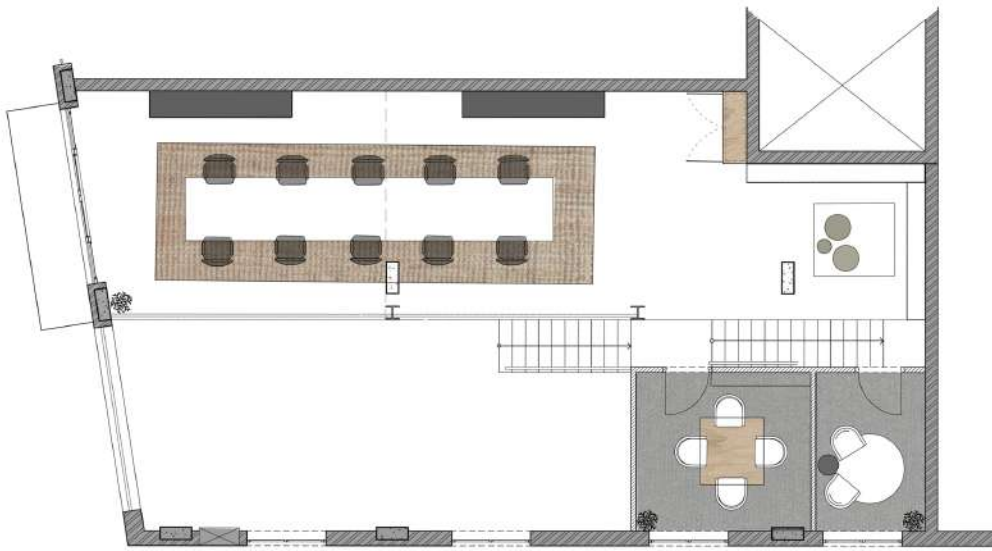
GENERAL PUBLIC SEATING AREA



WORKSPACE



KITCHEN

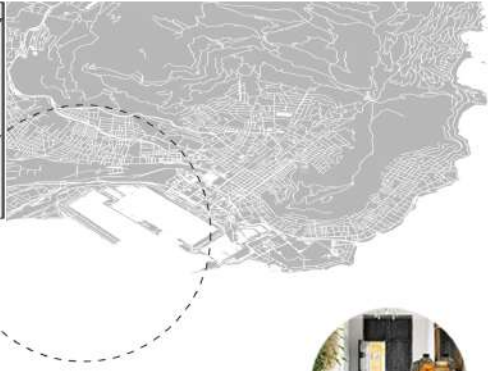




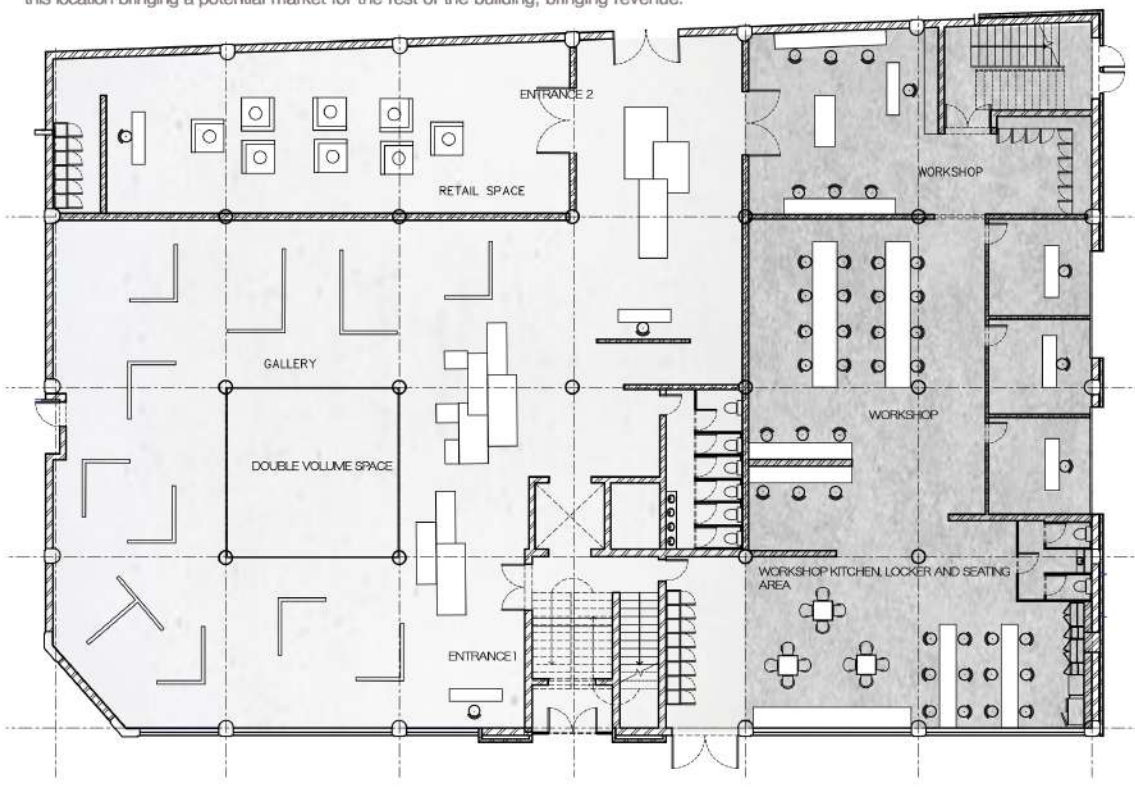
THE VIBRANCY



# THE VIBRANCY WOODSTOCK



The Vibrancy, located on 10 Searle street, Woodstock is a unique building offering an exclusive experience for guests from all around the world who are wanting to learn more about the heritage and product of Woodstock itself. Over the past decade people have been turning towards a more sustainable way of living. This building brings a unique attribution of upcycling, reusing and recycling, a space for the regeneration of materials in the workshop itself creating limited edition furniture pieces, the retail space which brings the product to customers hands as well as the gallery space which provides locals with a chance and opportunities to showcase their work, a creative and modern office space on the first floor which offers entrepreneurs a way of gaining experience and lastly a boutique hotel on the 3rd floor attracting tourists to this location bringing a potential market for the rest of the building, bringing revenue.



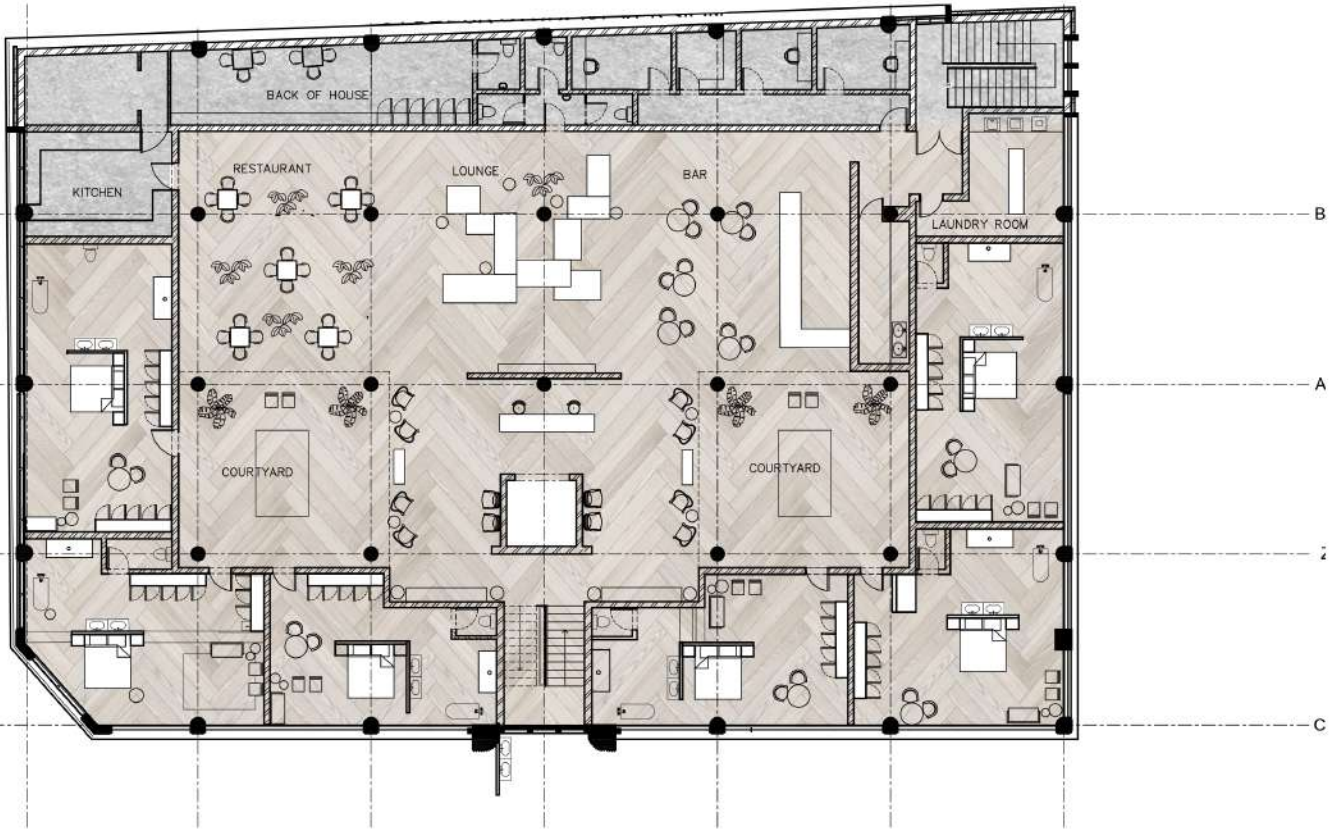
GROUND FLOOR (1:200)



GALLERY SPACE







THIRD FLOOR (1:200)



BOUTIQUE RESTAURANT AREA



BOUTIQUE HOTEL LOBBY AREA



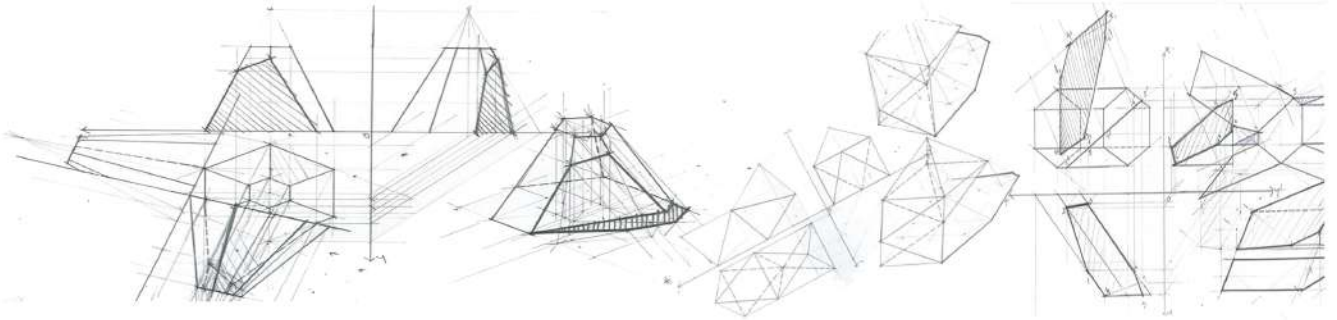
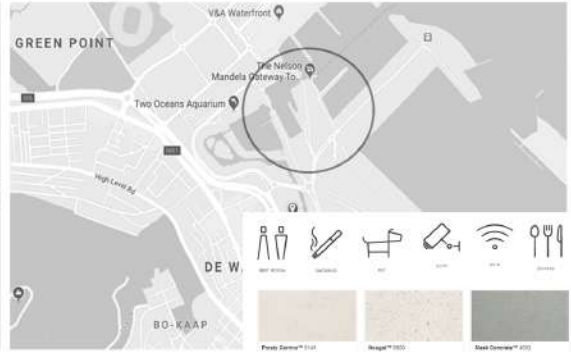


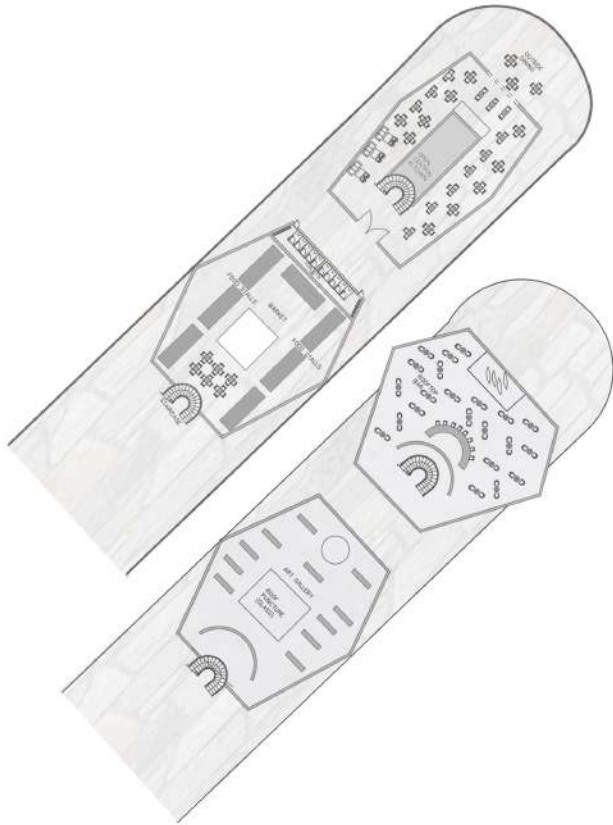


CAESARSTONE

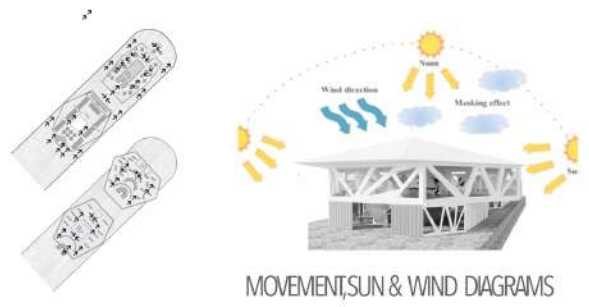
# THE SPIRE

A tapering conical or pyramidal structure on the top of a building.  
 The Spire offers a one of a kind experience, while visiting the V&A Waterfront, its a "getaway" from the busy mall where one can have a peaceful meal at the restaurant, be able to purchase and enjoy fresh caught fish and other goods, enjoy the open view of the harbour from the roof top bar as well as enjoy arts and local talent at the gallery. The spire is a modern feature but without taking all of its original beauty from before, the tower like shapes and natural stone are kept in place. Protecting the natural heritage of the jetty, people can still focus on what is left behind as the modern components are all kept clean and white.

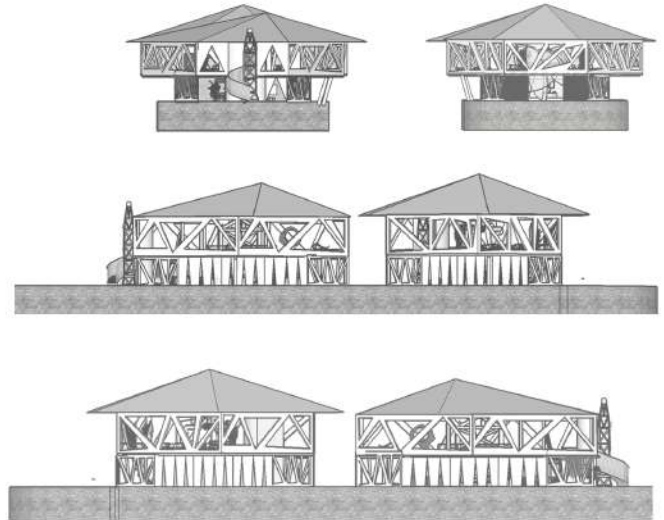




1ST & 2ND FLOOR PLAN (NTS)



MOVEMENT, SUN & WIND DIAGRAMS



ELEVATIONS (NTS)



ART GALLERY



ART GALLERY







PHOTOGRAPHY



INTERIOR

# PHOTOGRAPHY TASK

MOUNT NELSON SITE VISIT

REQUIREMENTS:

1X PORTRAIT OF A DETAIL

1X PORTRAIT OF AN EXTERIOR

1X PORTRAIT OF AN INTERIOR



DETAIL



EXTERIOR



SERENITY CAPSULE  
HOTEL

# The Serenity Hotel

My inspiration for this space was to create a sophisticated, trendy hotel, where guests instantly feel at ease in a comfortable space, mentally and externally. The light, soft moods all come together to create a sense of peace and of course, serenity. Privacy is a true aspect I followed, giving the guests their own seclusion but at the same time bringing them together in the right areas. Quiet Zones are brought into my space to ensure a soft, peaceful environment.



FIRST FLOOR - FLOOR PLAN (NTS)



RECEPTION AREA



LOUNGE, DINING & WORK AREA



PUBLIC KITCHEN



PUBLIC AREA

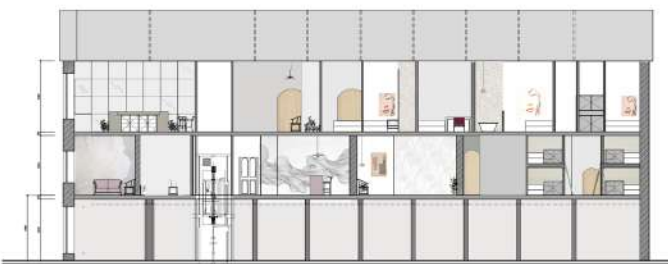


FLOW MOVEMENT DIAGRAM



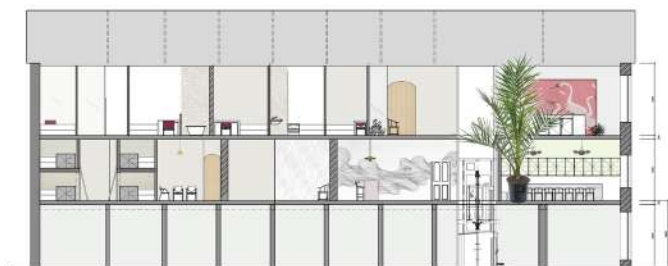
ZONING:  
 PUBLIC AREAS  
 WC / TOILETS  
 SMART POD  
 DOUBLE POD  
 DOUBLE PLUS POD

SECOND FLOOR - FLOOR PLAN (NTS)



INTERNAL SIDE ELEVATION  
 89 SIR LOWRY RD, WOODSTOCK

AA ELEVATION (NTS)



BB ELEVATION (NTS)

INTERNAL SIDE ELEVATION  
 89 SIR LOWRY RD, WOODSTOCK



SEATING AREA







SMART POD & WC



DOUBLE POD WC





DOUBLE POD & WC



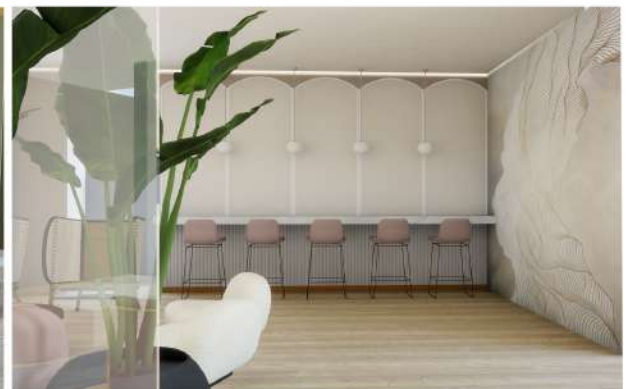
DOUBLE PLUS POD & WC



THE FLAMINGO BAR ATRIUM



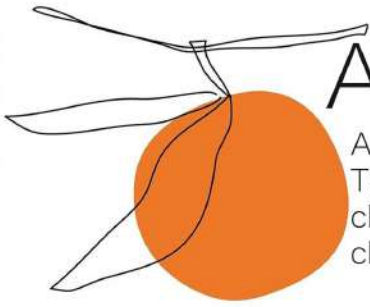
GENERAL AREA



PUBLIC WORK AREA



APARTMENT 601

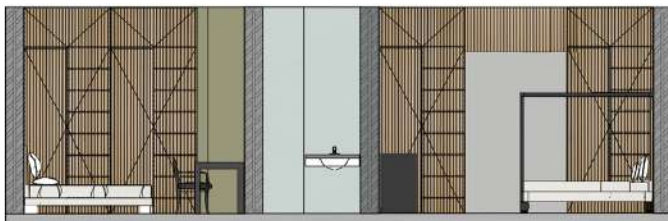


# APARTMENT 601

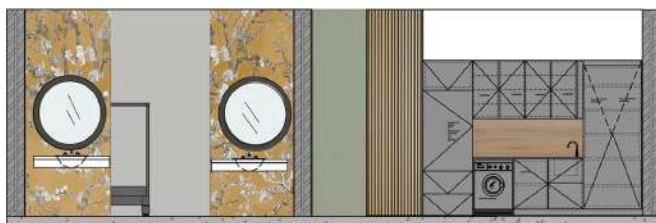
A modern, sophisticated apartment based in the heart of Waterkant. The client is a businessman living with his wife. They are looking for a clean space with elements of warmth. As well as this they enjoy their classical art and love the look of wallpapers.



FLOOR PLAN (NTS)



ELEVATION 1 (NTS)

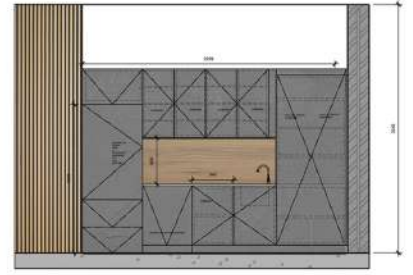
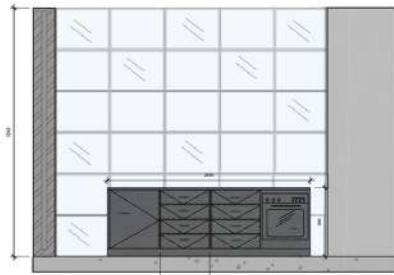
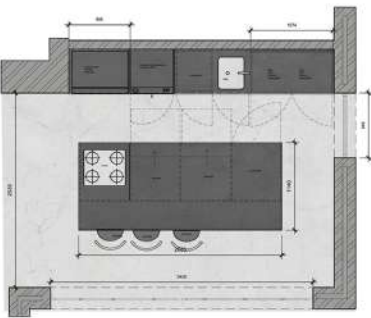


ELEVATION 2 (NTS)





KITCHEN PERSPECTIVE

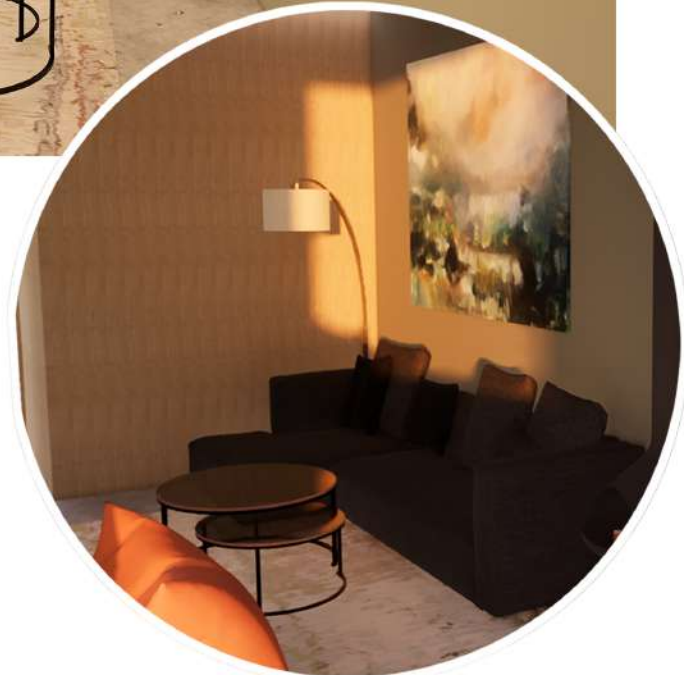


KITCHEN TECHNICALS (NTS)



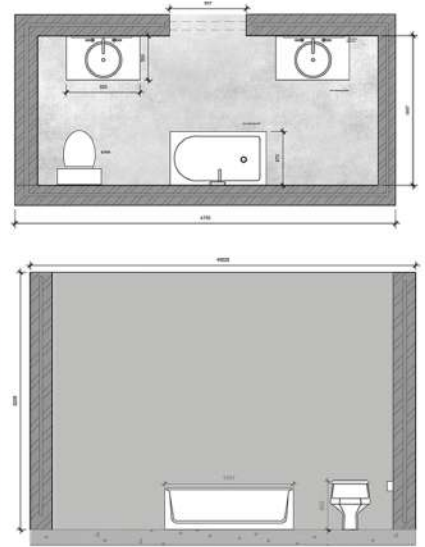


LIVING AREA





MAIN BEDROOM



MAIN BATHROOM



BATHROOM TECHNICAL



GUEST BEDROOM



GUEST BATHROOM

