

# GRACE TAYLOR

PORTFOLIO





✉ GRACIETAYLOR195@GMAIL.COM

☎ +27 81 315 2359





# CONTENTS

01	THE RIVER BRIDGE HOTEL - PG BISON COMPETITION	PAGES 1 - 6
02	STAY UNIQUE - ECO CABIN	PAGES 7 - 16
03	KSA - KITCHEN DESIGN	PAGES 17 - 22
04	CASA PALMA - RESIDENTIAL DESIGN	PAGES 23 - 30
05	FIBONACCI - STUDENT RESIDENTIAL DESIGN	PAGES 31 - 48
06	HOSPICE - COMMERCIAL DESIGN	PAGES 49 - 58
07	THE HIVE - BOXWOOD	PAGES 59 - 64
08	FERNWOOD - RESIDENTIAL DESIGN	PAGES 65 - 72
09	STROLLA - HOSPITALITY DESIGN	PAGES 73 - 78
10	OPEN ROOM - OFFICE DESIGN	PAGES 79 - 84
11	MISCELLANEOUS DESIGN	PAGES 85 - 90
12	TECHNICAL DRAWINGS   FIBONACCI	PAGES 91 - 98



# 01

## THE RIVER BRIDGE HOTEL

PG BISON COMPETITION

2024 | 1ST RUNNER UP - NATIONAL COMPETITION

### BRIEF :

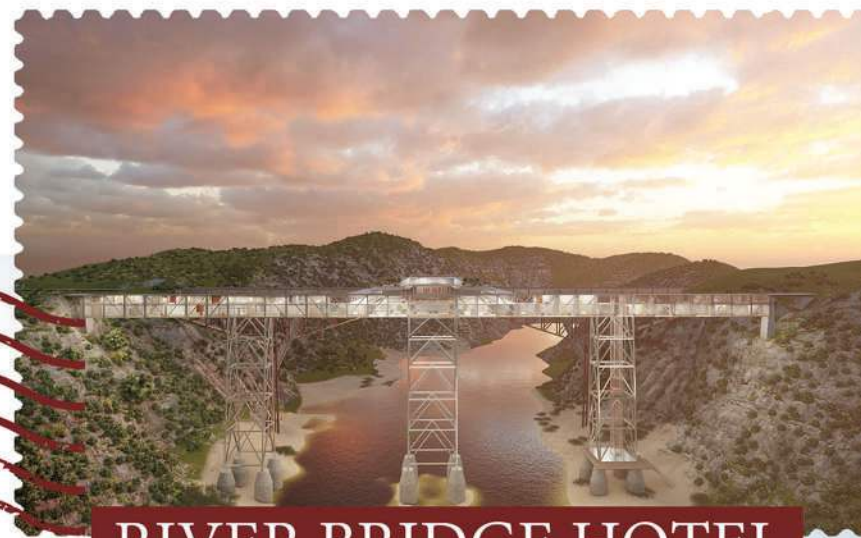
WE WERE TASKED WITH DESIGNING A CONTEMPORARY, PROGRESSIVE DESTINATION HOTEL IN SOUTH AFRICA THAT APPEALS TO LOCALS AND ENCOURAGES STAYCATIONS BY CELEBRATING THE BEAUTY OF ITS LOCATION. THE DESIGN MUST HAVE A STRONG CORE IDENTITY, AVOIDING CURIO OR SUPERFICIAL ELEMENTS, AND BE INTERNATIONALLY COMPETITIVE. THE HOTEL SHOULD BE TAILORED SPECIFICALLY FOR SOUTH AFRICANS, AND THE DESIGN MUST INCORPORATE YOUR PERSONAL VISION. FINALLY, THE HOTEL SHOULD HAVE A NAME THAT REFLECTS ITS DESIGN CONCEPT.

### CONCEPT :

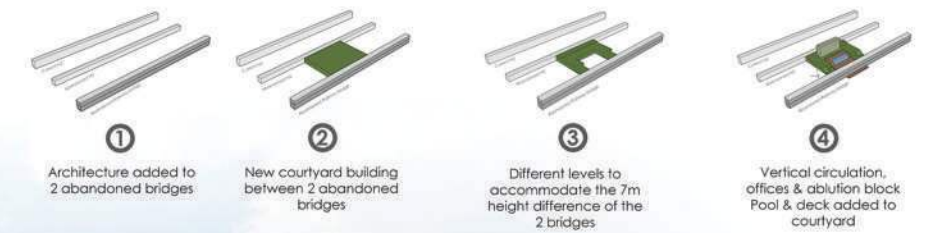
THE GOURITS BRIDGE IN SOUTH AFRICA IS LOCATED IN A SEMI-ARID LANDSCAPE FEATURING ROLLING HILLS, RIVERINE VIEWS, AND RESILIENT VEGETATION. NEARBY, THE HISTORIC TOWN OF ALBERTINIA OFFERS ALOE TOURS AND CRAFT MARKETS, WHILE THE REGION AROUND GOURITZMOND IS RENOWNED FOR BRIDGE SWINGING, HIKING, AND BIRDWATCHING. THE GOURITS RIVER BRIDGE COMPLEX, SITUATED ON THE N2 ROUTE BETWEEN CAPE TOWN AND PORT ELIZABETH, INCLUDES THREE BRIDGES. THE TWO ABANDONED BRIDGES WILL BE REPURPOSED INTO A LUXURY HOTEL THAT INTEGRATES SUSTAINABLE PRACTICES, INNOVATIVE ARCHITECTURE, AND SOUTH AFRICAN CULTURAL ELEMENTS. THIS TRANSFORMATIVE PROJECT WILL CELEBRATE THE LOCATION'S NATURAL BEAUTY AND PROVIDE A UNIQUE EXPERIENCE, WITH THE THIRD, FUNCTIONAL BRIDGE 40 METERS AWAY PROVIDING ACCESS TO THE RIVER BRIDGE HOTEL.







# RIVER BRIDGE HOTEL



The Gourits Bridge in South Africa is located in a semi-arid landscape featuring rolling hills, riverine views, and resilient vegetation. Nearby, the historic town of Albertinia offers aloe tours and craft markets, while the region around Gouritzmond is renowned for bridge swinging, hiking, and birdwatching.

The Gourits River Bridge complex, situated on the N2 route between Cape Town and Port Elizabeth, includes three bridges. The two abandoned bridges will be repurposed into a luxury hotel that integrates sustainable practices, innovative architecture, and South African cultural elements. This transformative project will celebrate the location's natural beauty and provide a unique experience, with the third, functional bridge 40 meters away providing access to the River Bridge Hotel.

- Fishing | Hiking | Wildlife trips | 4X4 | Swimming | Star gazing | Kayaking | Herb Garden | Fynbos walks | Bird Watching



As guests check in they get grouped on the app to compete with their family / friends in a treasure hunt, to find plaques around the hotel that they can scan to get points and interesting facts / videos and interactive games about the activities and features of the hotel.

THE TWO ABANDONED GOURITZ BRIDGES

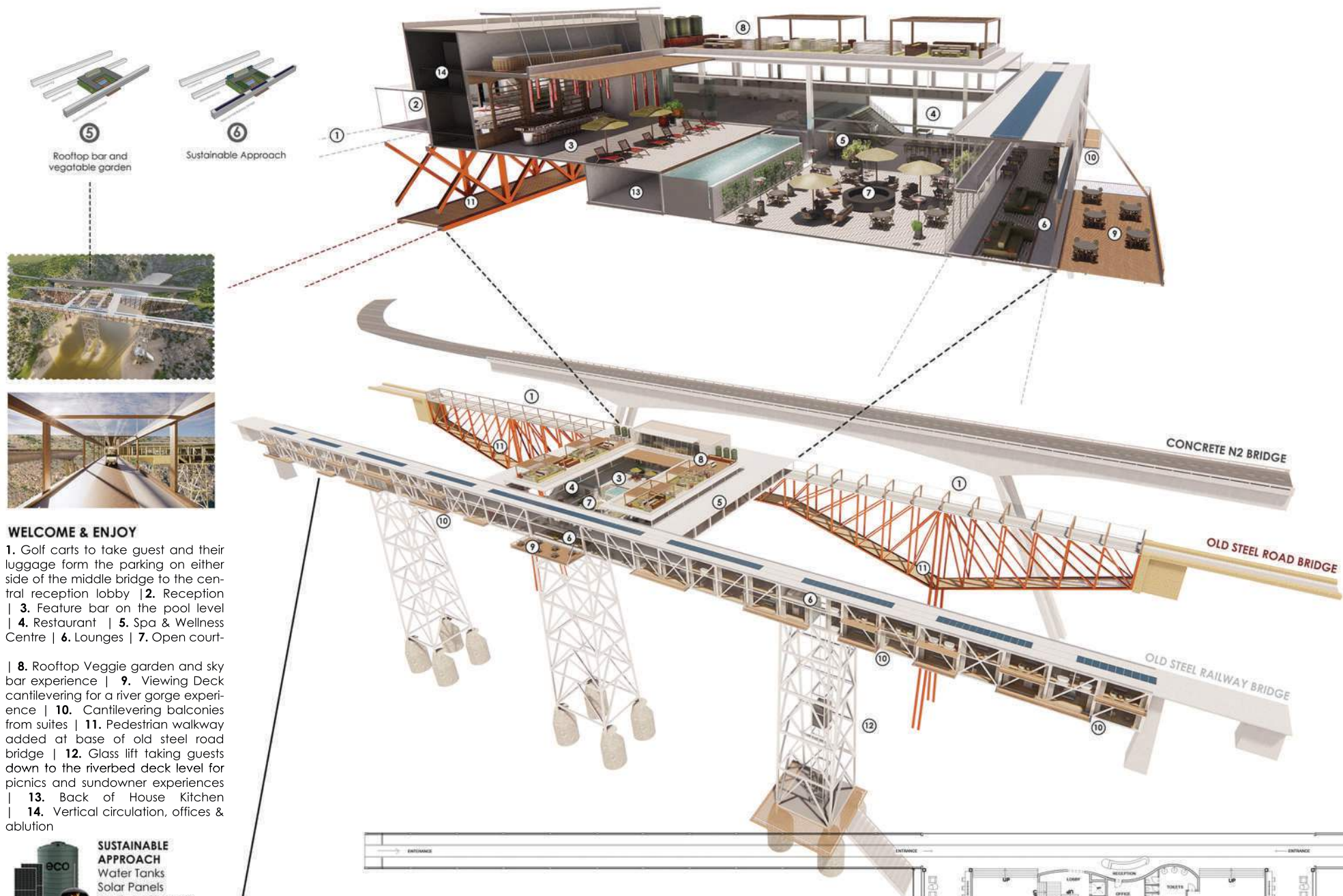


## SITE ANALYSIS

1 →

PG BISON SUBMISSION BOARD 1





Reception & waiting lounge



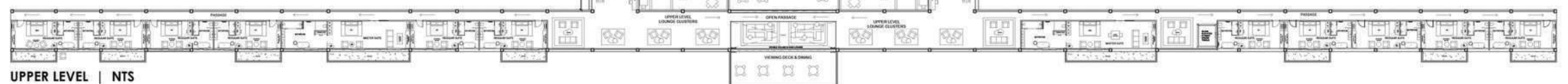
Dining, lounge & open courtyard



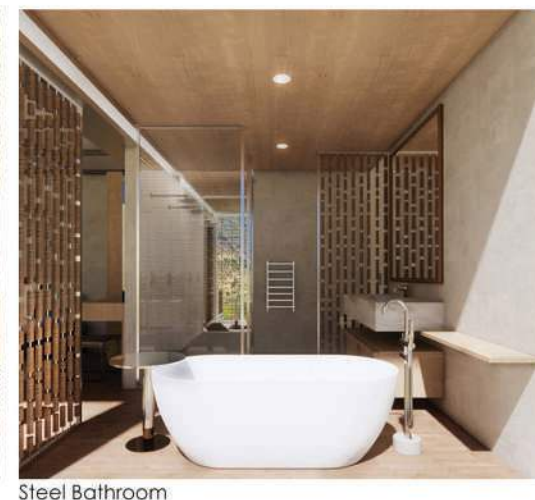
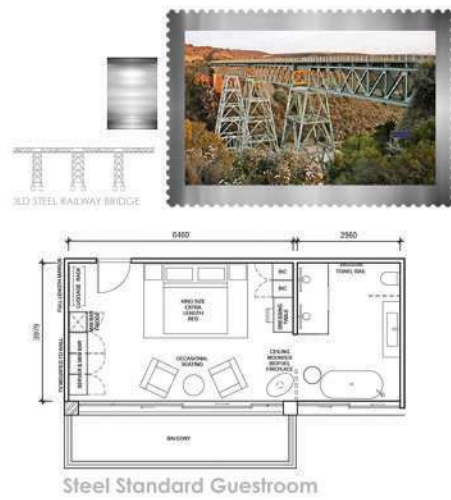
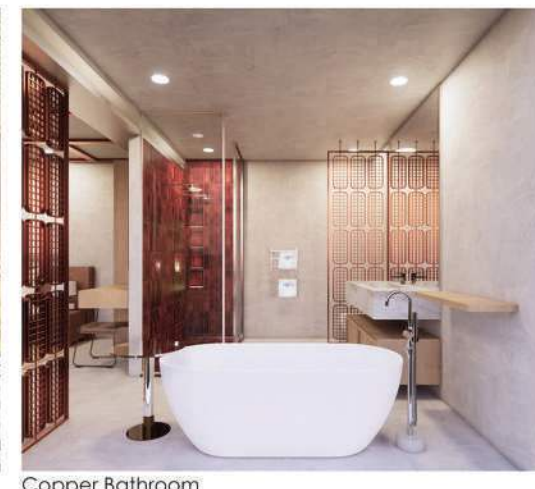
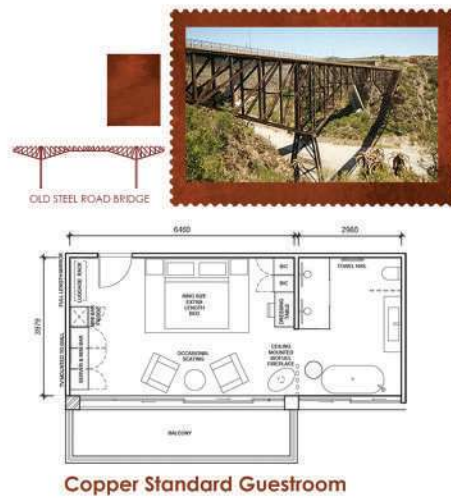
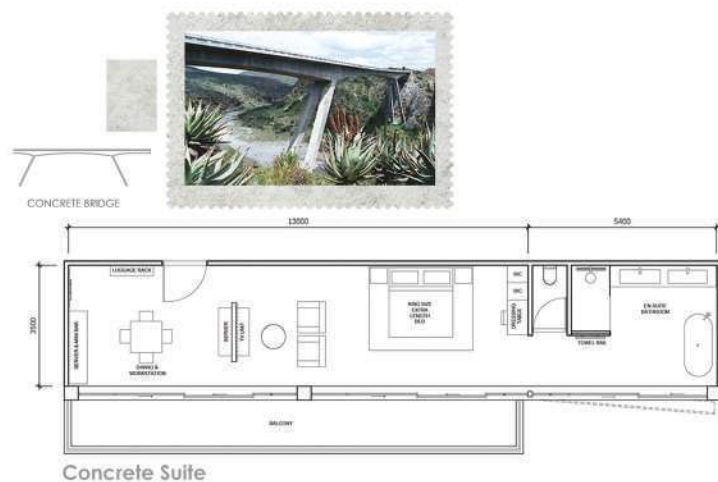
Lounge & Open courtyard



Poolside Bar







3 → PG BISON SUBMISSION BOARD 3







## 02

# STAY UNIQUE

## ECO CABIN

### 1ST PLACE

#### BRIEF :

STAY UNIQUE OPERATES THROUGH A UNIQUE PARTNERSHIP MODEL, COLLABORATING WITH LANDOWNERS VIA LAND LEASE AGREEMENTS. THEY CONSTRUCT CABINS OFF-SITE AND PLACE THEM ON PARTNER'S LAND USING CRANES AND TRUCKS, ADDING ON-SITE AMENITIES LIKE DECKING, SECURITY, OUTDOOR POOLS, AND FIRE AREAS. THEY HAVE GIVEN US AN EXCITING COMPETITION THAT INVOLVES DESIGNING AN INNOVATIVE CABIN DESIGN IN A PICTURESQUE LOCATION WITHIN A 2.5-HOUR RADIUS OF CAPE TOWN. LOOKING AHEAD TO 2024, STAY UNIQUE IS CONSIDERING EXPANSION BEYOND THE WESTERN CAPE AND SEEKS DESIGN INSPIRATION FOR FOUR ADDITIONAL CABINS. NOTABLY, THE SELECTED DESIGNS WILL NOT ONLY BE BUILT BUT EXPERIENCED BY THE STUDENTS THEMSELVES ONCE READY FOR GUESTS.

#### CONCEPT :

THE ECO CABIN AT CAPE POINT NATURE RESERVE OFFERS A TRANSFORMATIVE AND SUSTAINABLE RETREAT AMIDST THE STUNNING NATURAL BEAUTY OF THE AREA. ITS MINIMALIST DESIGN AND NATURAL MATERIALS BLEND SEAMLESSLY WITH THE SURROUNDINGS, FOSTERING A DEEP CONNECTION WITH NATURE. LARGE WINDOWS BRING IN NATURAL LIGHT AND BREATHTAKING VIEWS, WHILE SUSTAINABLE TECHNOLOGIES LIKE SOLAR PANELS AND RAINWATER HARVESTING MINIMIZE ENVIRONMENTAL IMPACT. THIS SECLUDED CABIN ALLOWS GUESTS TO DISCONNECT FROM DAILY LIFE AND IMMERSE THEMSELVES IN CAPE POINT'S PRISTINE BEAUTY. ITS HARMONIOUS BLEND OF MINIMALISTIC AESTHETICS AND ECO-CONSCIOUSNESS MAKES IT AN IDEAL CHOICE FOR AN ECO-FRIENDLY ESCAPE IN THIS BREATHTAKING LANDSCAPE. WHILE SECURING LAND MAY REQUIRE CONTACT WITH CAPE NATURE, THE CABIN OFFERS ACCESS TO DIVERSE AMENITIES AND ATTRACTIONS WITHIN THE NATURE RESERVE, INCLUDING HIKING TRAILS, SECLUDED BEACHES, AND THE ICONIC CAPE POINT LIGHTHOUSE.



**ELEVATION AA**  
NTS



**ELEVATION BB**  
NTS



**FLOOR PLAN**  
NTS





CAPE POINT NATURE RESERVE





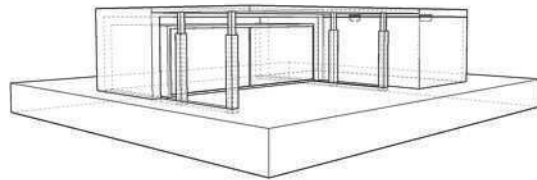
BEDROOM AND KITCHEN



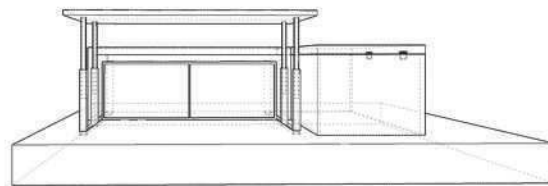


#### SKETCHES SHOWING BOOTH SEATING :

Includes a mechanism in which has three settings. The first being the table completely tucked away, fitting seamlessly into the booth creating a beautiful lounge.



The second being pulled out and adjusted to the same level as the bench, acting as a sleeper couch for kids or friends in the space. The drawers beneath store bedding and extra cushions for this.



The third being lifted up to the highest level, in which turns the space into a dining area where everyone can sit and enjoy a meal indoors.



KITCHEN





NATURE BATH



FIRE HEATED TUB





FACADE





BATHROOM



MATERIALITY



BEDROOM FURNITURE



OUTDOOR FURNITURE





MATERIALITY



# 03

## KSA

### KITCHEN DESIGN

#### **BRIEF :**

KSA HAS TASKED US WITH DESIGNING A COUPLE'S DREAM KITCHEN FOR THE NEXT STAGE OF THEIR RETIREMENT. BEV AND MICHAEL JONES, AGED 68 AND 70, ARE SETTLING IN THE GROOT PARYS LIFESTYLE ESTATE IN PAARL, WESTERN CAPE. THEY ARE DOWNSIZING TO A FREESTANDING UNIT AND DESIRE A HIGH-END, ELEGANT KITCHEN THAT IS BOTH COMPACT AND FUNCTIONAL, WITH ACCESSIBLE AND EFFICIENT STORAGE. BEV PREFERS A CALM, NATURAL AESTHETIC, USING PREMIUM MATERIALS, WITH MELAMINE ALLOWED ONLY FOR THE CARCASSES. NO MELAMINE, WRAP, OR FORMICA WILL BE USED ELSEWHERE. THE KITCHEN MUST ACCOMMODATE THEIR AGING NEEDS, AS BEV HAS MILD ARTHRITIS, AND THEY REQUIRE HIGH-QUALITY HARDWARE, SURFACES, AND APPLIANCES TO SUPPORT THEIR LIFESTYLE IN THEIR FINAL HOME.

#### **CONCEPT :**

THIS DESIGN CONCEPT IS TAILORED TO ACCOMMODATE BEV AND MICHAEL JONES' NEEDS AS THEY TRANSITION INTO THEIR ELDERLY YEARS. IT ENSURES THEIR KITCHEN SPACE REMAINS FUNCTIONAL, ELEGANT, AND CONDUCIVE TO THEIR WELL-BEING. WITH A NEUTRAL COLOR PALETTE AND THE INCORPORATION OF NATURAL ELEMENTS SUCH AS TIMBER AND STONE, THE DESIGN EXUDES TIMELESS SOPHISTICATION WHILE CREATING A CALM AND PEACEFUL ENVIRONMENT. EVERY ASPECT OF THE KITCHEN, FROM ITS ERGONOMICALLY DESIGNED LAYOUT TO THE SELECTION OF PREMIUM MATERIALS AND HARDWARE, IS METICULOUSLY PLANNED TO CATER TO THE COUPLE'S EVOLVING NEEDS, PARTICULARLY AS THEY BECOME LESS MOBILE WITH AGE. BY PRIORITIZING ACCESSIBILITY, COMFORT, AND AESTHETIC LONGEVITY, THIS KITCHEN DESIGN AIMS TO ENHANCE THEIR DAILY LIVING EXPERIENCE AND PROVIDE THEM WITH A SPACE WHERE THEY CAN GRACEFULLY AGE IN PLACE.



INSPIRATION BOARD

















# 04

## CASA PALMA RESIDENTIAL DESIGN

### **BRIEF :**

WE WERE TASKED WITH CREATING A 'TEASER' PRESENTATION FOR A HOLIDAY HOME IN PALMA DE MALLORCA, SPAIN, FOR A MARRIED COUPLE IN THEIR 40S FROM GERMANY WITH A YOUNG SON. THE CLIENTS, AVID ART COLLECTORS, REQUESTED THAT THE FURNISHINGS COMPLEMENT THE ARCHITECTURE AND PROVIDE A PLATFORM FOR DISPLAYING THEIR COLLECTION. THEY PREFERRED A BAREFOOT LUXURY STYLE, EMPHASIZING UNIQUE, CUSTOM-DESIGNED FURNITURE PIECES THAT ARE INTERNATIONALLY APPEALING YET ROOTED IN THE LOCATION'S CONTEXT. THE PRESENTATION FOCUSES ON INITIAL DESIGN DIRECTION FOR THE LOUNGE, DINING, AND BEDROOMS.

### **CONCEPT :**

FOR THIS HOLIDAY HOME IN PALMA DE MALLORCA, I DESIGNED A SPACE THAT BLENDS BAREFOOT LUXURY WITH THE CLIENTS' PASSION FOR ART, WHILE REFLECTING THE NATURAL BEAUTY OF THE ISLAND. "CASA PALMA" ENVISIONS THE HOME AS A PERSONAL GALLERY, WHERE CUSTOM-DESIGNED, SCULPTURAL FURNITURE COMPLEMENTS AND FRAMES THEIR ART COLLECTION. THE DESIGN INCORPORATES LOCAL MATERIALS LIKE TERRACOTTA, WOOD, AND STONE, ALONG WITH SOFT, NEUTRAL TONES THAT EVOKE THE MEDITERRANEAN LANDSCAPE. EACH ROOM IS CURATED TO ENHANCE THE NATURAL LIGHT AND VIEWS, CREATING A TRANQUIL, SOPHISTICATED SANCTUARY THAT CONNECTS THE INTERIORS WITH THE SURROUNDING ENVIRONMENT WHILE CELEBRATING THE ART WITHIN.





AI GENERATED IMAGE

BRIEF : RESIDENTIAL



**LOCATION |** Palma de, Mallorca, Spain

Palma de Mallorca, the capital of Spain's Balearic Islands, combines Mediterranean beauty with rich history. Its beaches, mountains, and warm climate inspire a palette of sandy beiges, ocean blues, and olive greens, bringing a natural, harmonious feel to interiors.

**Mediterranean Connection:**  
The use of natural colours and materials to reflect Mallorca's landscapes, blending indoors with the coastal environment.

**Barefoot Luxury:**  
The main focus is comfort with high-quality, relaxed furnishings that feel both luxurious and approachable.

**Artistic Showcasing:**  
The use of minimal furniture, custom lighting, and plinths to highlight sculptures, vessels, and other art-works, making them focal points in each space.

**Local Craftsmanship:**  
Integrating Mallorcan artisan touches, like handwoven fabrics and ceramics, for authenticity and cultural connection.

**Mediterranean Architecture:**  
Reflecting the home's angular, modern architecture with clean lines, neutral tones, and accent materials that align with the exterior's style.







GENERAL LOUNGE





GENERAL DINING





GENERAL BEDROOMS





MASTER BATHROOM & DRESSING ROOM





# 05

## FIBONACCI

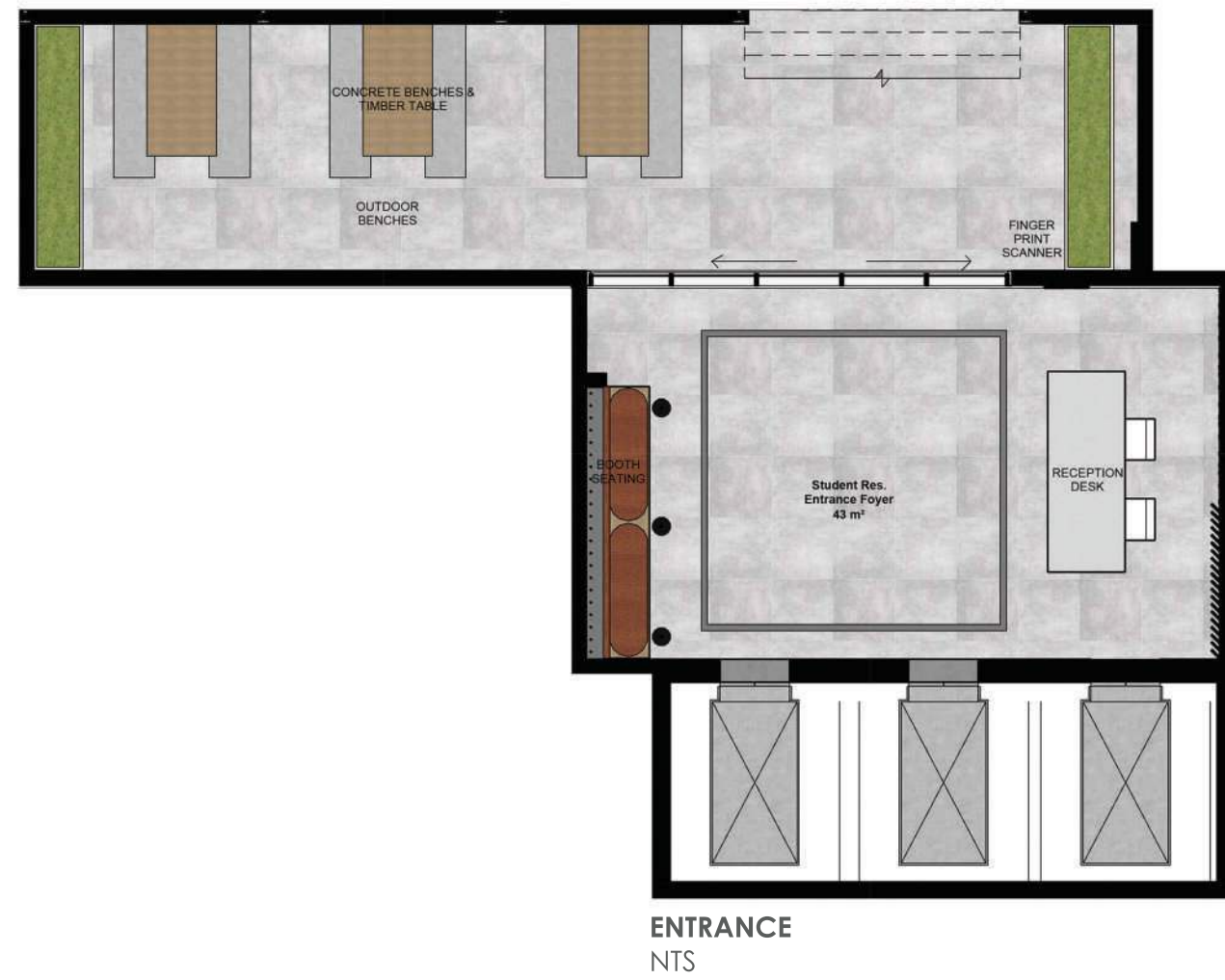
### STUDENT RESIDENTIAL DESIGN

#### **BRIEF :**

WE WERE TASKED WITH DESIGNING AN INTERIOR PROPOSAL FOR THE FIBONACCI RESIDENTIAL DEVELOPMENT IN CAPE TOWN'S SOUTHERN SUBURBS. OUR GOAL WAS TO CREATE FUNCTIONAL, DURABLE, AND ERGONOMIC SPACES THAT DELIVER VALUE TO THE STUDENTS LIVING THERE, ALL WHILE STAYING WITHIN A COST-CONSCIOUS FRAMEWORK. THE PROJECT INCLUDED A VARIETY OF SPACES: THE RECEPTION FOYER, LIFT LOBBIES, STUDY ROOMS, A GYM/CO-WORKING SPACE, A STUDY CENTER, A STUDENT LOUNGE, COMMUNAL KITCHEN AND DINING AREAS, AND THREE TYPES OF STUDENT ROOMS - STUDIO, ONE-BEDROOM, AND TWO-BEDROOM. OUR DESIGN AIMED TO FOSTER COMFORT, COMMUNITY, AND A VIBRANT STUDENT LIFESTYLE.

#### **CONCEPT :**

MY DESIGN CONCEPT FOR THIS STUDENT ACCOMMODATION FOCUSES ON FOSTERING A VIBRANT COMMUNITY TO ENHANCE THE OVERALL STUDENT EXPERIENCE. I PRIORITIZED COMMUNAL AREAS SUCH AS KITCHENS, LOUNGES, AND COURTYARDS TO ENCOURAGE INTERACTION AND COLLABORATION, DRAWING INSPIRATION FROM THE FIBONACCI THEME OF GROWTH AND INTERCONNECTEDNESS. FLEXIBLE, MODULAR FURNITURE WAS INCORPORATED TO ALLOW ADAPTABILITY FOR VARIOUS ACTIVITIES, WHILE CIRCULAR AND SPIRAL MOTIFS SYMBOLIZE THE NATURAL FLOW OF RELATIONSHIPS. DURABLE, VERSATILE MATERIALS WERE CHOSEN TO ENSURE LONGEVITY AND SUPPORT A SENSE OF COMMUNITY, CELEBRATING INDIVIDUALITY WITHIN A SHARED LIVING SPACE. THE RESULT IS A DYNAMIC AND WELCOMING ENVIRONMENT WHERE STUDENTS CAN THRIVE INDEPENDENTLY AND TOGETHER, TRULY CREATING A HOME AWAY FROM HOME.







RECEPTION SEATING



RECEPTION DESK







MEETING ROOM



CO-WORKING SPACE







PRIVACY PODS



STUDY CENTRE

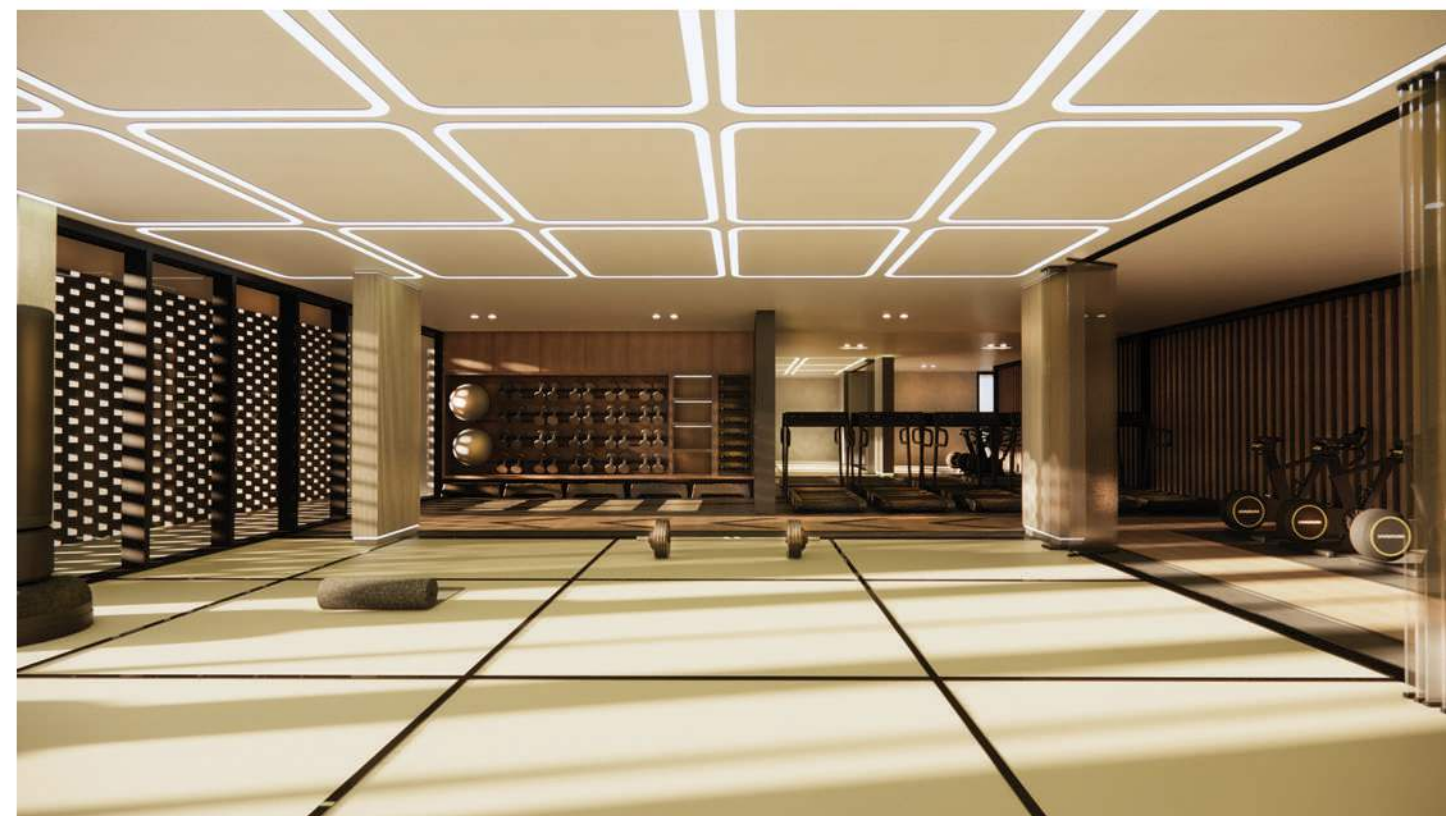


GYM  
NTS

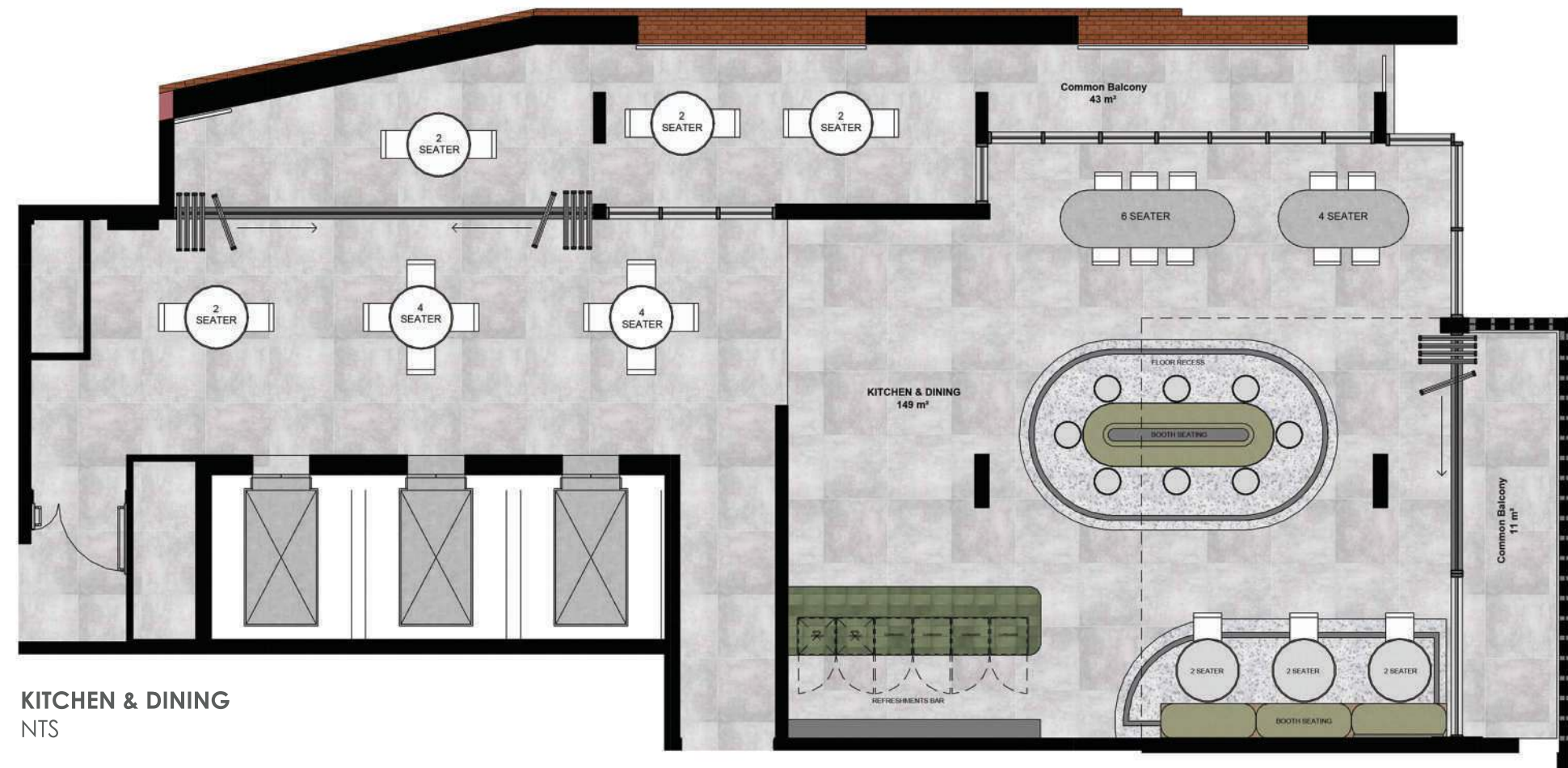




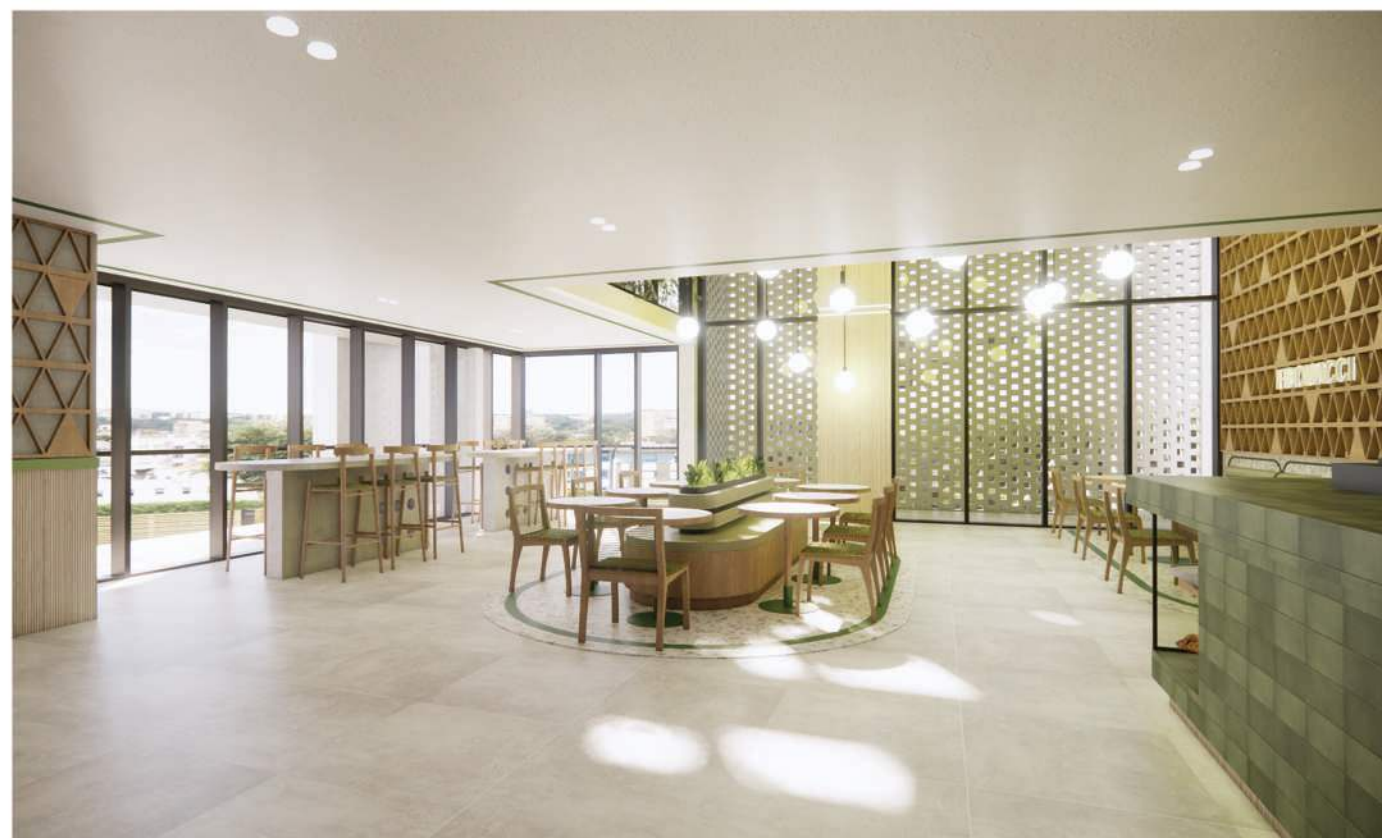
WEIGHTS & STORAGE



WORKOUT AREA







DINING



KITCHEN



LOUNGE  
NTS





LOUNGE

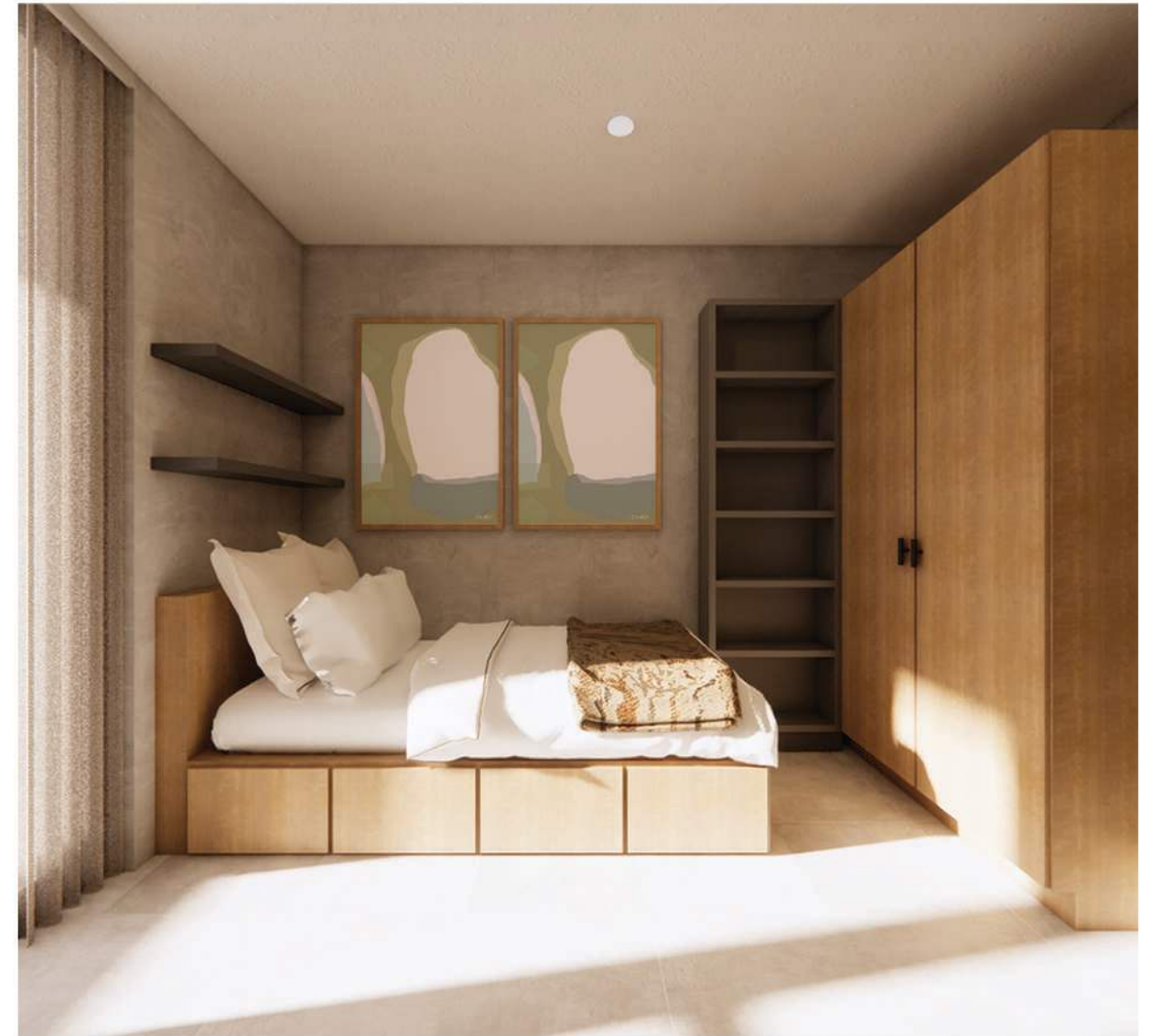








BEDROOM



BEDROOM







1. Vogue Neutro Glass Glazed White Ceramic Tile - Italtile | 2. Summer White (PG Bison) | 3. Caraz (PG BISON) | 4. Soleil Outdoor Rug in Shell - Hertex | 5. Sandshell - Hertex | 6. Nougat - Hertex | 7. Leek - Hertex | 8. Super Black - PG Bison | 9. Terrazzn Show, Phoenix - Womag | 10. Vanilla Bean - Cemcrete | 11. Decobella Riviera Subway Botanical Green Gloss - Stiles | 12. Terrazzi Sardegna - Belatex | 13. Corundum - Como | 14. Besalt - Como | 15. Fluted Glass - Peacock Glass | 16. Silver Grey Petal - Womag | 17. Charcoal Satin - Graytex Metal | 18. Moon Crystal - Avonite





# 06

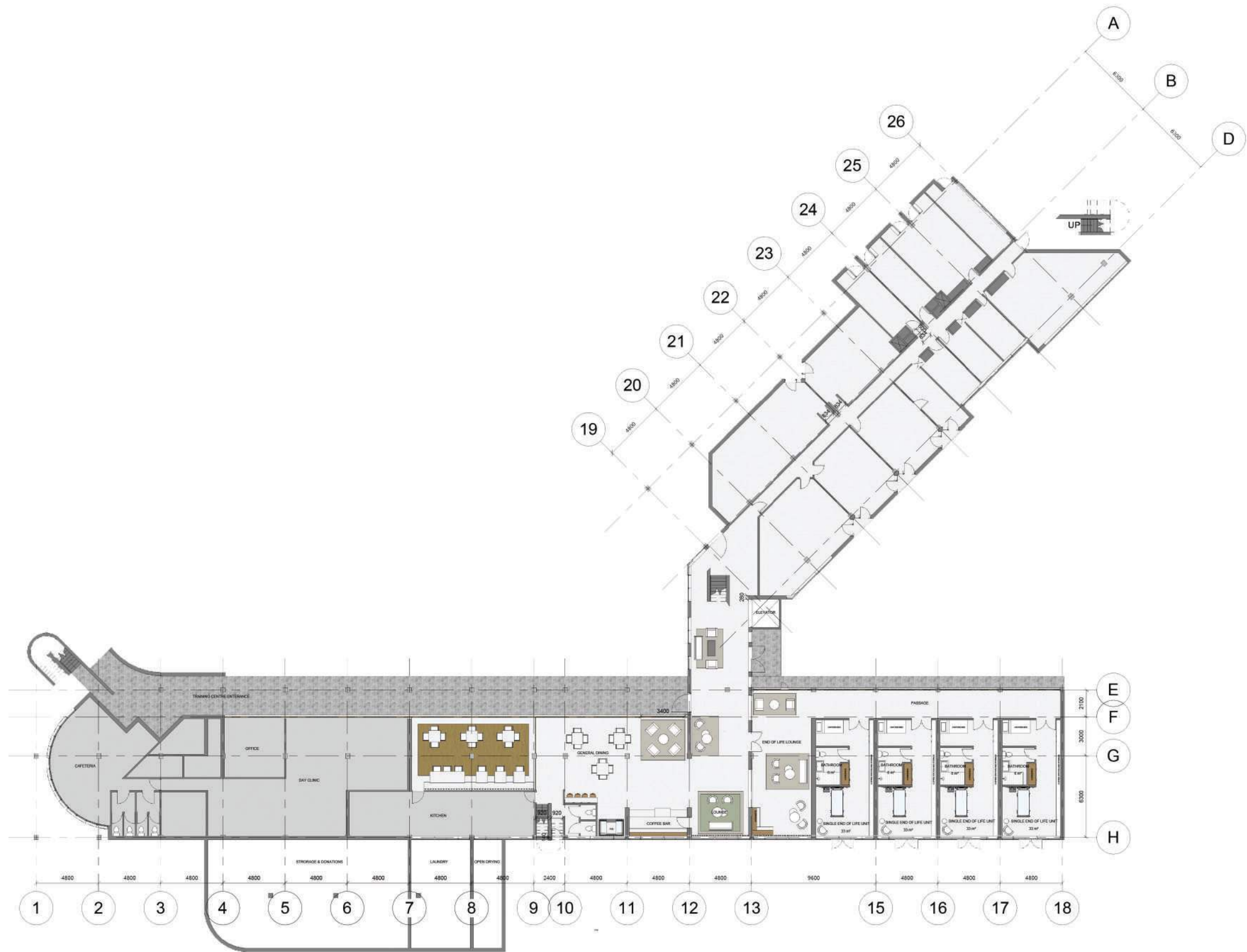
## HOSPICE COMMERCIAL DESIGN 1ST PLACE

### BRIEF :

WE WERE TASKED WITH DESIGNING A HOSPICE FACILITY IN MARYLAND, HANNOVER PARK, THAT PROVIDES A DIGNIFIED END-OF-LIFE EXPERIENCE. THE FACILITY NEEDS TO CATER TO THE NEEDS OF PATIENTS, THEIR FAMILIES, AND THE STAFF, ENSURING COMFORT AND EMOTIONAL SUPPORT FOR ALL INVOLVED. THIS DESIGN WILL BE USED BY THE CLIENT TO RAISE INTERNATIONAL FUNDING FOR CONSTRUCTION AND STATE-OF-THE-ART EQUIPMENT.

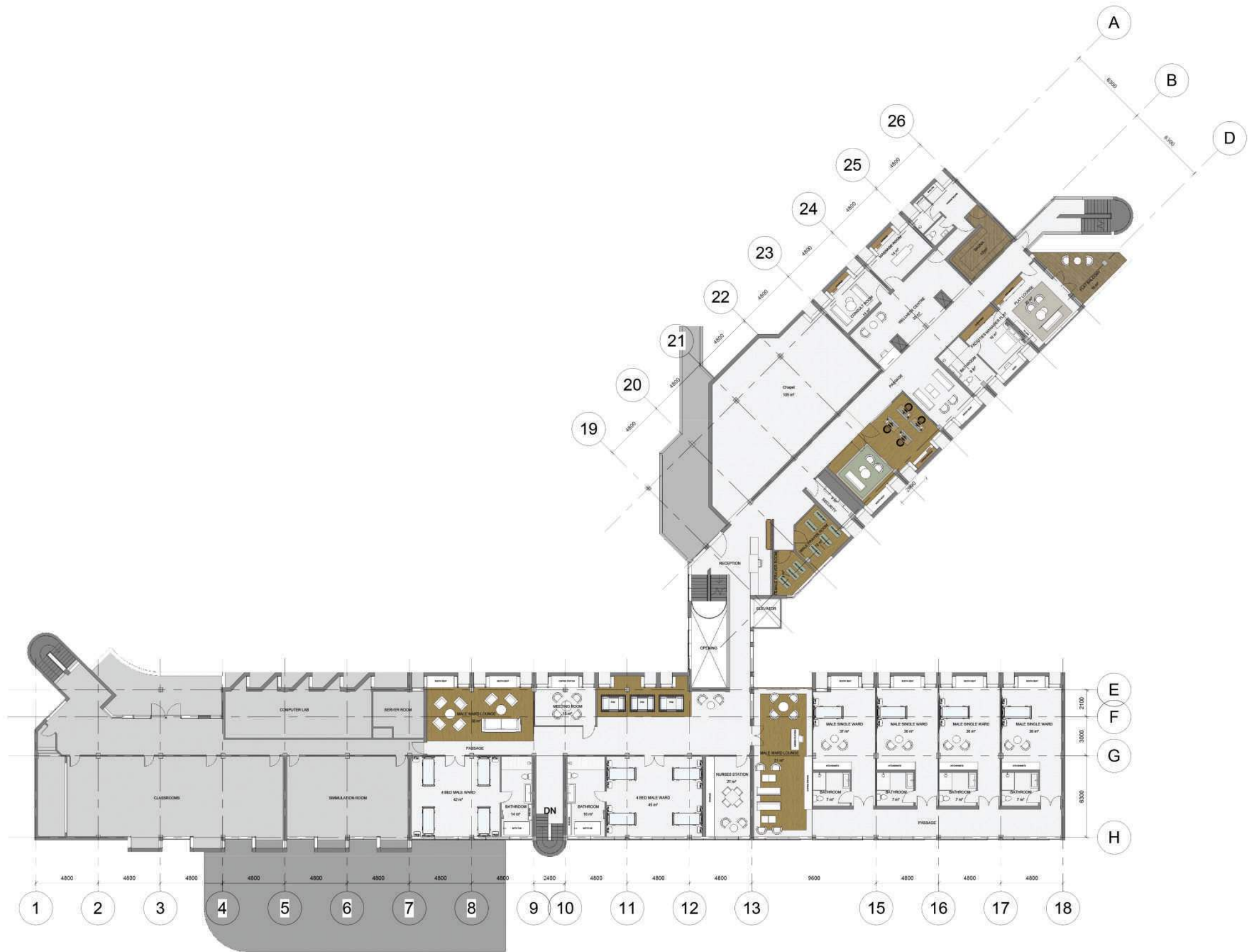
### CONCEPT :

THE DESIGN IS INSPIRED BY THE TREE OF LIFE, SYMBOLIZING REJUVENATION, GROWTH, AND CONNECTION TO NATURE. IT INTEGRATES THE SURROUNDING TREES AND USES A CALMING COLOUR PALETTE OF GREENS, EARTHY TONES, WHITES, AND BEIGES TO CREATE A PEACEFUL ENVIRONMENT. PATIENT ROOMS OFFER SERENE GARDEN VIEWS, WHILE COMMON AREAS CONNECT TO THE CENTRAL LAWN, REINFORCING THE TREE OF LIFE'S SYMBOLISM. PRIVATE SPACES PROVIDE COMFORT AND TRANQUILITY. THIS CONCEPT AIMS TO FOSTER DIGNITY AND COMPASSION, ENCOURAGING PATIENTS TO LIVE FULLY IN THEIR FINAL DAYS.



GROUND FLOOR 1:200





FIRST FLOOR 1:200







FIRST FLOOR RECEPTION



GROUND FLOOR LOUNGE CLUSTERS





LOUNGE CLUSTERS  
PLAN



GROUND FLOOR LOUNGE CLUSTER



LOUNGE CLUSTERS



GROUND FLOOR LOUNGE CLUSTER

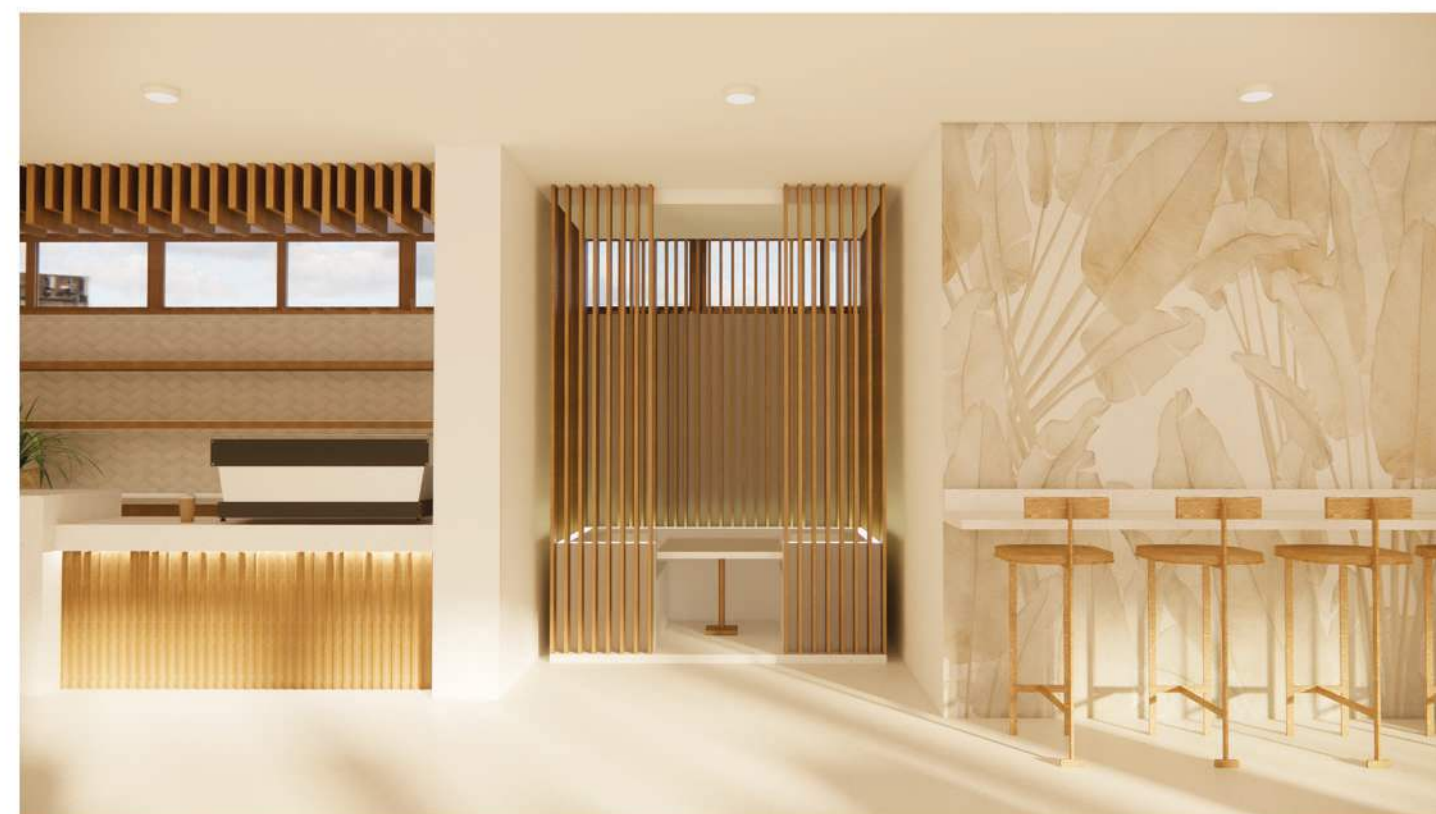


GARDEN PATIO

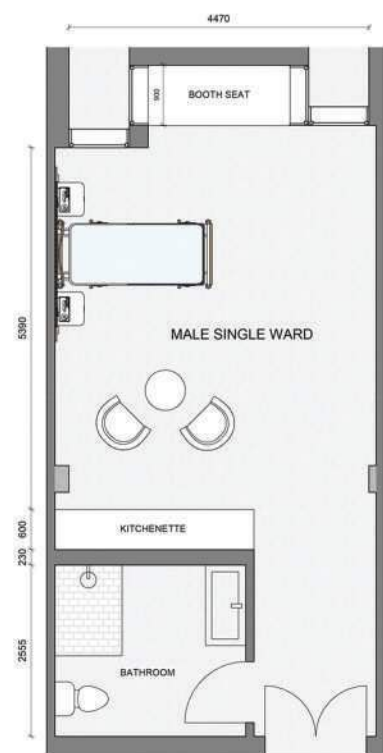




GROUND FLOOR COFFEE STATION AND GENERAL DINING



GROUND FLOOR COFFEE STATION AND POD



MALE SINGLE WARD  
PLAN



TYPICAL SINGLE WARD





TYPICAL 4 BED WARD







# 07

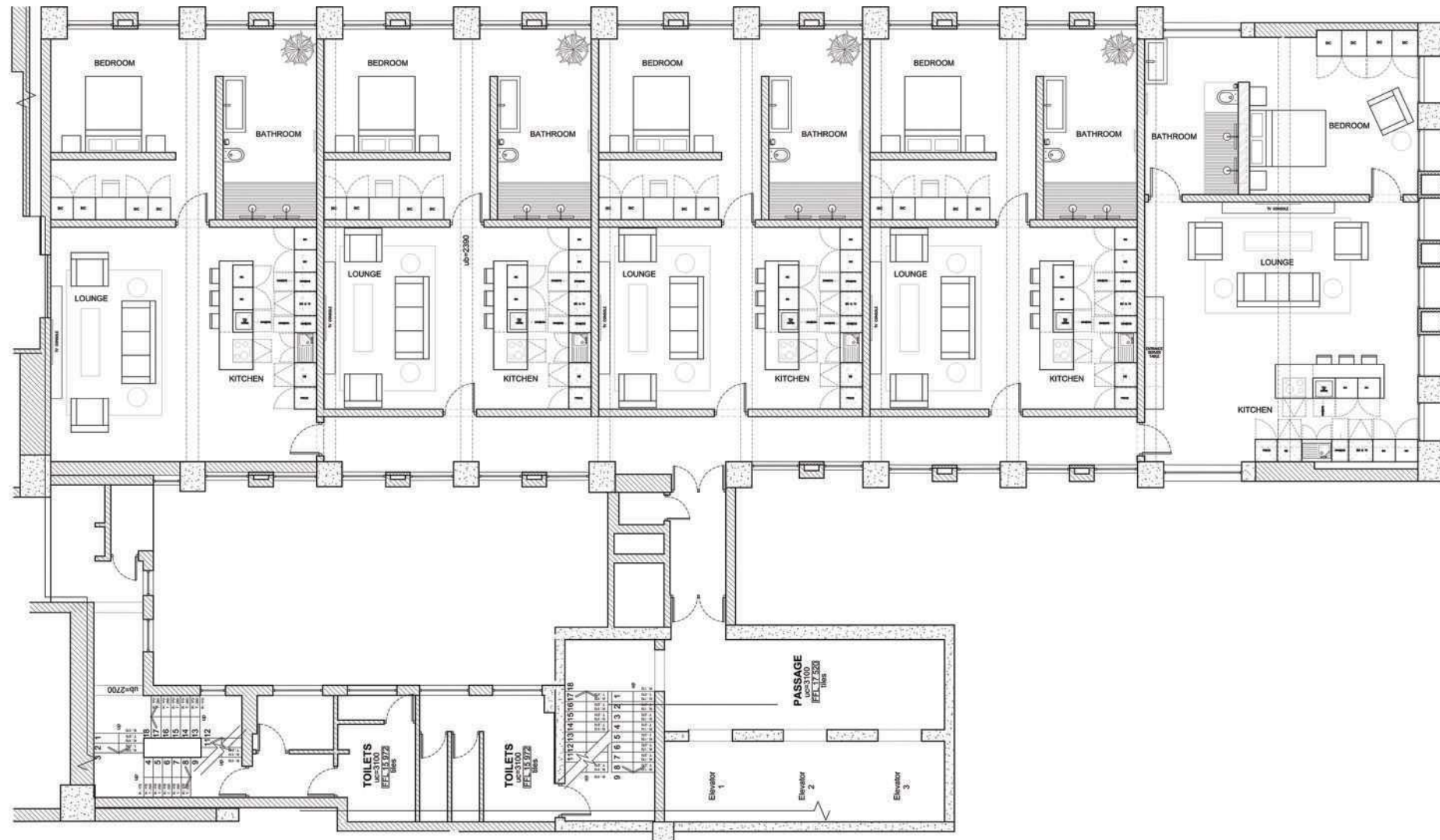
## THE HIVE BOXWOOD 1ST PLACE

### BRIEF :

THE PROPERTY DEVELOPMENT COMPANY BOXWOOD HAVE PRESENTED US AN EXCITING COMPETITION THAT INVOLVES DESIGNING A CITY BLOCK ALONG STRAND, LOOP, AND BREE STREET, WITH A WIDE RANGE OF POSSIBILITIES INCLUDING RESIDENTIAL CONVERSIONS, NEW OFFICES, A CAMPUS, HOTEL, HOSTEL, AND MORE. THE PRIMARY OBJECTIVE IS TO EMBRACE CREATIVITY AND UNIQUENESS, AVOIDING CONVENTIONAL CHOICES. TO ACHIEVE THIS, CONSIDER FACTORS SUCH AS THE NEEDS OF THE GREATER CBD, THE DEMOGRAPHIC OF THE AREA'S RESIDENTS, AND THE TARGET MARKET. ADDITIONALLY, FACTOR IN PARKING REQUIREMENTS, ASSUMING THE ADDITION OF FIVE PARKING FLOORS, AND ADHERE TO HERITAGE REQUIREMENTS BY PRESERVING THE BERGASTAN FACADE WHILE ALLOWING FOR PAINTING. YOUR DESIGN SHOULD INCLUDE A CONCEPT AND A NEW NAME FOR THE BLOCK, EXTERIOR FACADE DESIGNS, 3D RENDERINGS OF TWO BUILDING CORNERS, A MATRIX ENTRANCE LOBBY DESIGN, AND A CONCEPT FLOOR DESIGN FOR ONE FLOOR OF ONE BUILDING TO SHOWCASE YOUR DESIGN CONCEPT EFFECTIVELY.

### CONCEPT :

I HAVE CHOSEN THE NEDBANK BUILDING, LOCATED ON THE CORNER OF LOOP AND STRAND STREET, IN THE CAPE TOWN CBD, FOR MY RESIDENTIAL BUILDING, THE HIVE. CAPE TOWN IS CONSTANTLY DEVELOPING, AND BECOMING MORE OF A HOT SPOT FOR THE WORKING YOUTH, AND DUE TO THE BUILDINGS LOCATION, IT MAKES IT THE IDEAL RESIDENTIAL SPOT, FOR ONE TO COMMUTE FROM HOME TO WORK.



**FLOOR PLAN**  
NTS









KITCHEN AND LOUNGE



KITCHEN AND LOUNGE

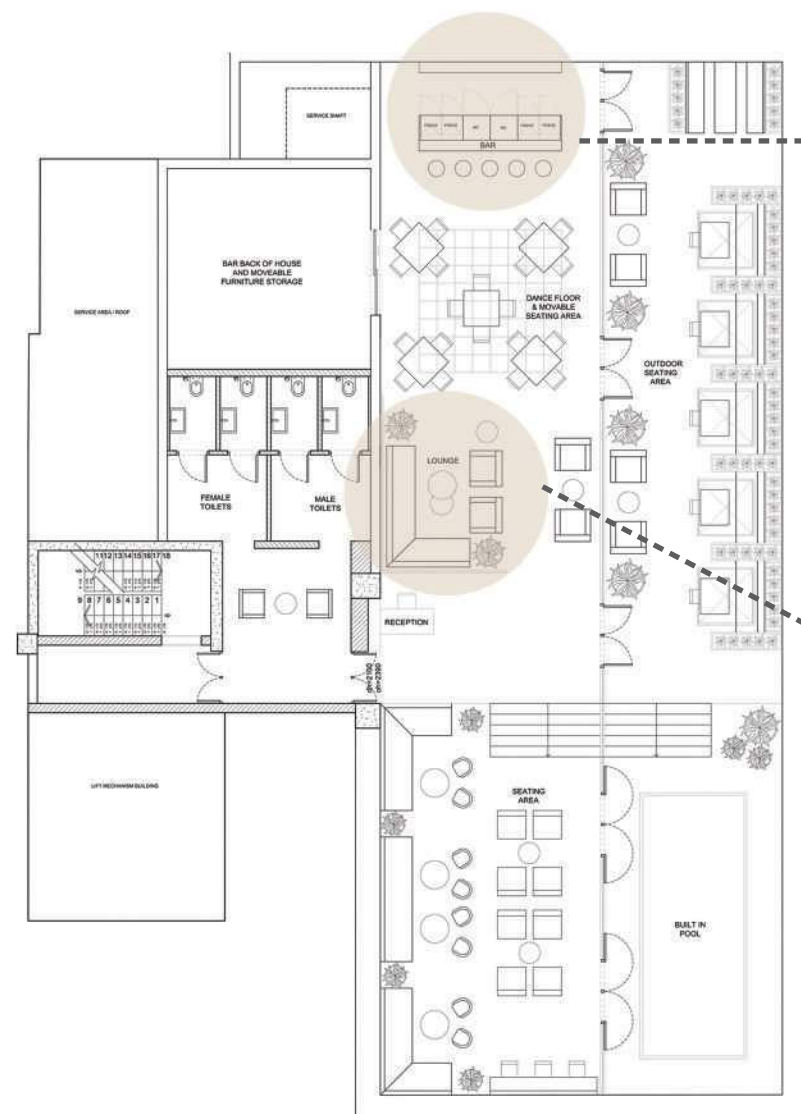


LOUNGE



BEDROOM





ROOF TOP PLAN  
NTS



ROOF TOP BAR



ROOF TOP LOUNGE AREA





## 08

# FERNWOOD ESTATE

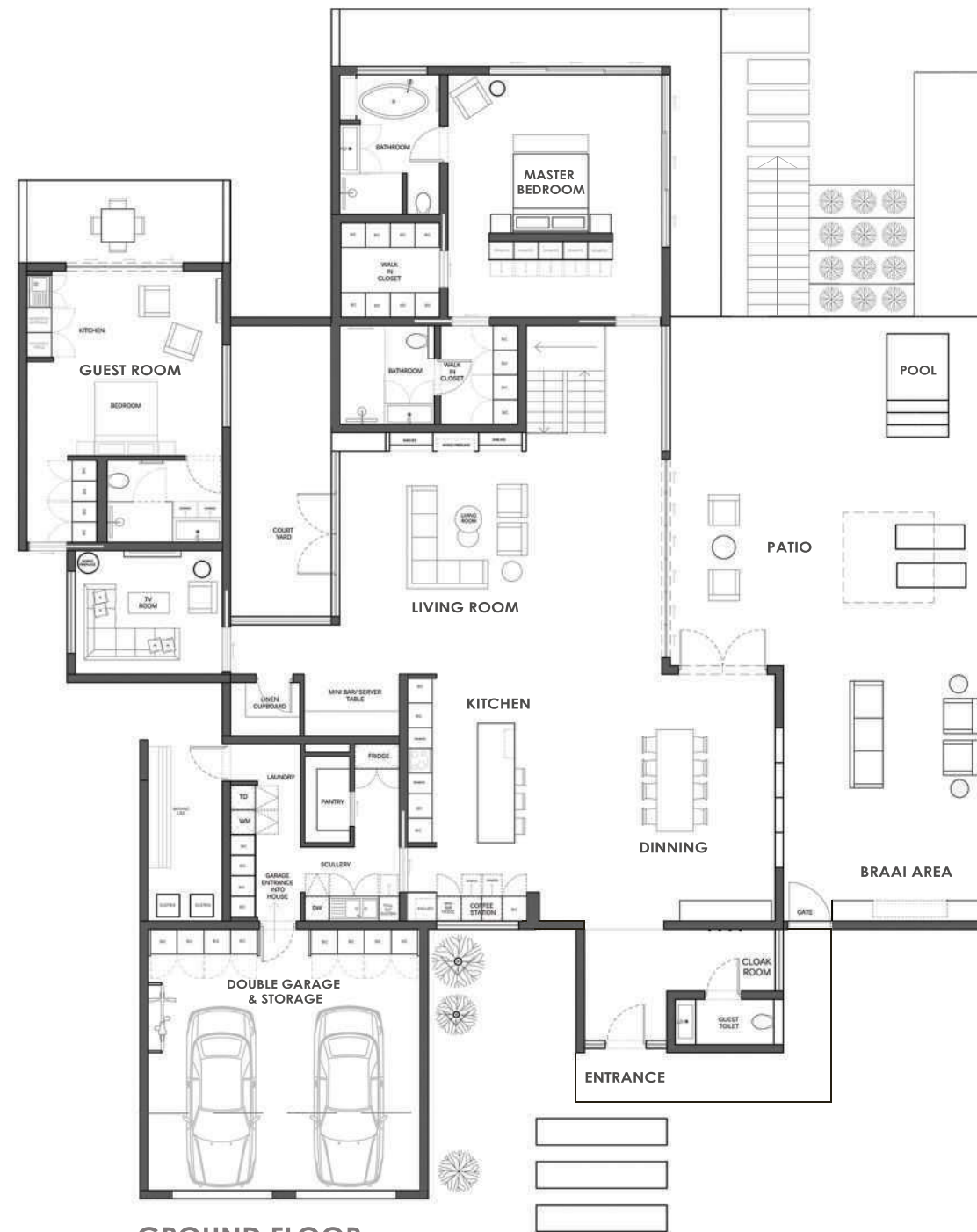
## RESIDENTIAL DESIGN

### BRIEF :

WE WERE GIVEN THE TASK TO DESIGN THE EXTERIOR AND INTERIOR OF HOUSE GESS. A RETIREMENT HOME, LOCATED IN FERNWOOD PRIVATE ESTATE, KNYSNA. THE CLIENTS KEITH AND KIM HAVE RECENTLY BOUGHT A BEAUTIFUL PLOT OF LAND HERE, THAT HAS A GRADUAL GRADIENT OF 12 METERS (SIDEWAYS) ALLOWING FOR A SPLIT LEVEL. THE KEY FOCUS IS THE FRONT OF THE HOUSE THAT IS NORTH- WEST FACING THE LAGOON, WITH A SECONDARY SEA VIEW OVER THE EASTERN HEAD ON THE SOUTH-WEST SIDE. THE DESIGN SHOULD ACCOMMODATE THE OLDER COUPLE, THEIR TWO ADULT CHILDREN LIVING OVERSEAS, AND POTENTIAL GUESTS

### CONCEPT :

THIS RETIREMENT HOME IS THOUGHTFULLY DESIGNED FOR A SOON-TO-BE-RETIRED COUPLE. THE SPACE IS TIMELESS, FEATURING NEUTRAL TONES AND CLEAN LINES COMPLEMENTED BY EARTHY TONES THAT CONNECT WITH THE NATURAL SURROUNDINGS. THE LAYOUT IS TAILORED FOR THE COUPLE'S CONVENIENCE IN THEIR GOLDEN YEARS, PLACING ALL ESSENTIAL AMENITIES ON THE GROUND FLOOR FOR EASY DAILY LIVING. THE GRADUAL SLOPE OF THE PLOT ALLOWS FOR A SPLIT-LEVEL DESIGN, ENHANCING THE OVERALL AESTHETIC. BELOW THE GROUND FLOOR, TWO BEDROOMS ARE DESIGNATED FOR THE COUPLE'S CHILDREN WORKING OVERSEAS, ENSURING A PRACTICAL AND HARMONIOUS LIVING ARRANGEMENT FOR THE ENTIRE FAMILY.



**GROUND FLOOR**  
NTS



**LOWER FLOOR**  
NTS





FRONT VIEW





KITCHEN



LOUNGE



DINNING ROOM



PATIO AREA





BATHROOM





GUEST BEDROOM





MASTER BEDROOM





# 09

## STROLLA

### HOSPITALITY DESIGN

#### 2ND RUNNER UP

#### **BRIEF :**

WE WERE TASKED WITH DESIGNING A COMMERCIALLY VIABLE COFFEE BAR AT STROLLA RESTAURANT IN SEA POINT, CAPE TOWN, THAT TRANSFORMS INTO A SPARKLING WINE BAR IN THE AFTERNOON. THE PROJECT INVOLVES CREATING A FUNCTIONAL AND AESTHETICALLY APPEALING KIOSK BAR AND SEATING AREA, WITH THE GOAL OF ENSURING A SEAMLESS TRANSITION BETWEEN THE TWO ATMOSPHERES WHILE MAINTAINING THE SPACE'S COMMERCIAL VIABILITY. WE WERE GIVEN CREATIVE FREEDOM TO DEVELOP A DESIGN THAT MEETS THE CLIENT'S NEEDS AND ENHANCES THE OVERALL EXPERIENCE FOR PATRONS.

#### **CONCEPT :**

THIS PROJECT INVOLVED REDESIGNING AN ACTUAL JUICE BAR IN SEA POINT TO CREATE A TRENDY, DOG- AND BIKE-FRIENDLY JUICE AND COFFEE BAR IN THE MORNING, WHICH SEAMLESSLY TRANSFORMS INTO A CHAMPAGNE AND OYSTER BAR, SPONSORED BY PONGRACZ, IN THE LATE AFTERNOON. THE OPEN-PLAN LAYOUT MAXIMIZES SEATING AND FLOW, WITH SLIDING WINDOWS PROVIDING EXCELLENT AIRFLOW DURING WARMER MONTHS AND A COZY, GLASS-ENCASED ATMOSPHERE IN WINTER. A NEUTRAL COLOR PALETTE ALLOWS FOR EASY TRANSITIONS BETWEEN DAY AND EVENING SETTINGS, WHILE A STRIKING FEATURE WALL, ILLUMINATED WITH WARM LED LIGHTS, SERVES AS THE FOCAL POINT, SYMBOLIZING A POPPED CHAMPAGNE BOTTLE AND HIGHLIGHTING THE PONGRACZ BRANDING.



EVENING FACADE



EVENING INTERIOR





MORNING FACADE



MORNING INTERIOR







MATERIALITY





# 10

## OPEN ROOM

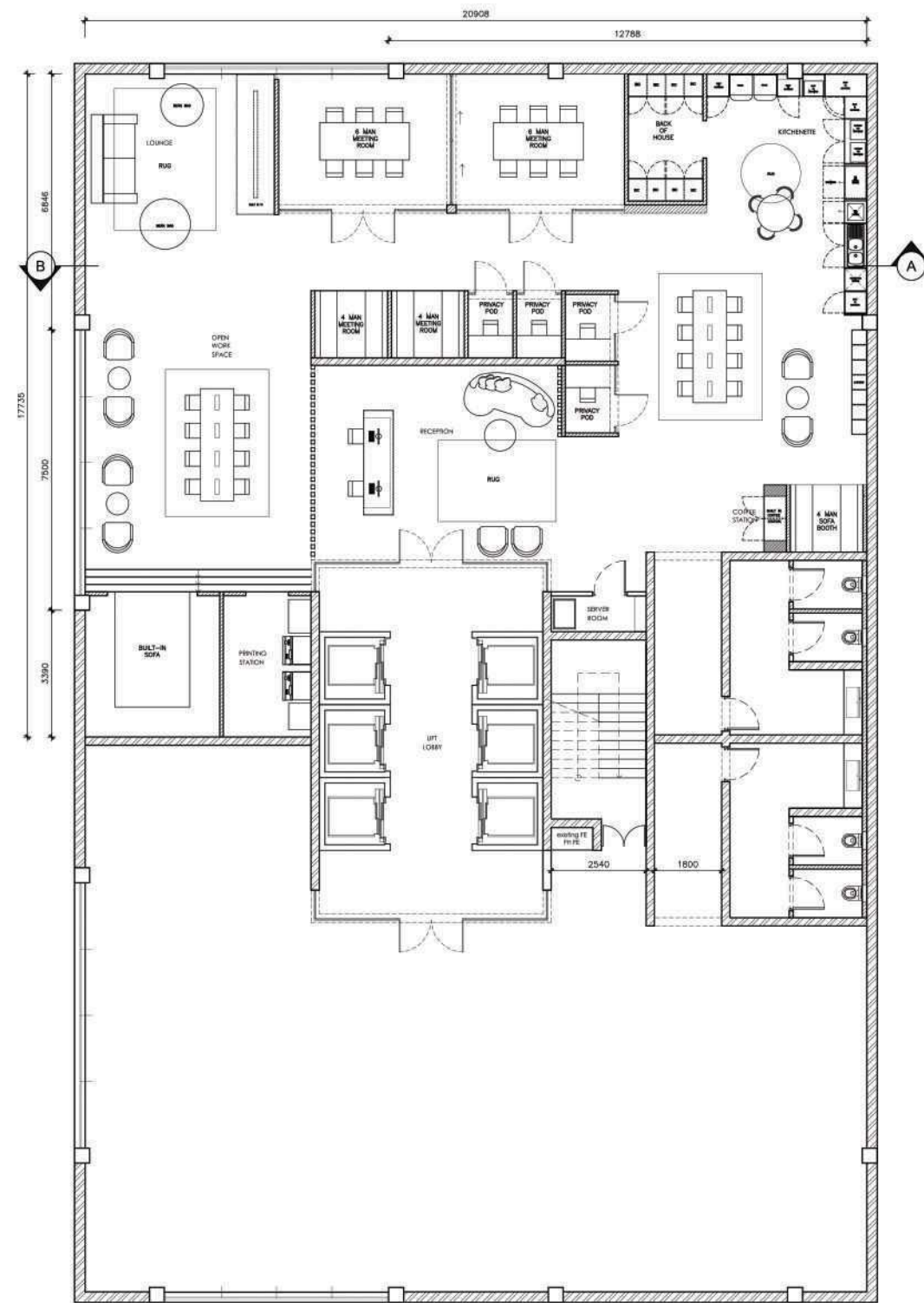
### OFFICE DESIGN

#### **BRIEF :**

OPEN ROOM HAS COMMISSIONED YOU TO DESIGN A DYNAMIC MEMBERS-ONLY WORKSPACE FOR CREATIVE PROFESSIONALS SUCH AS ARCHITECTS, INTERIOR DESIGNERS, AND GRAPHIC DESIGNERS. POST-PANDEMIC, THE FOCUS IS ON FLEXIBLE WORKSPACES THAT MOVE AWAY FROM THE OUTDATED OPEN-PLAN STYLE. RESEARCH ON 'OFFICES OF THE FUTURE' INDICATES A SHIFT TOWARDS FLEXIBILITY, ACCOMMODATING VARIOUS NEEDS LIKE CO-WORKING AND COLLABORATION. THE DESIGN EMPHASIZES TOUCH-DOWN AND AGILE WORKSPACES, MOVING AWAY FROM LARGE OPEN-PLAN LAYOUTS TO BETTER ADAPT TO CHANGING OFFICE HEADCOUNTS WHILE MAINTAINING A SENSE OF COMMUNITY.

#### **CONCEPT :**

WHEN GIVEN THIS PROJECT, I WANTED TO FOCUS ON THE MENTAL HEALTH OF THE EMPLOYEES, AS IT PLAYS A LARGE FACTOR IN THEIR PRODUCTIVITY AND WORK PERFORMANCE. I HAVE DESIGNED A PLAYFUL AND CREATIVE SPACE WHILE MAINTAINING A SOPHISTICATED AND ORGANIZED ENVIRONMENT. I ACHIEVED THIS BY CREATING AN OPEN, COLORFUL, AND UNIQUE WORKSPACE TO ENCOURAGE THE EMPLOYEES TO ENGAGE AND PROMOTE CREATIVITY.



**FLOOR PLAN**  
NTS





MATERIALITY



OPEN WORK SPACE



PRINTING STATION & BOOTH SEATING





RECEPTION



OPEN WORK SPACE & TWO PRIVACY PODS





# 11

## MISCELLANEOUS DESIGN

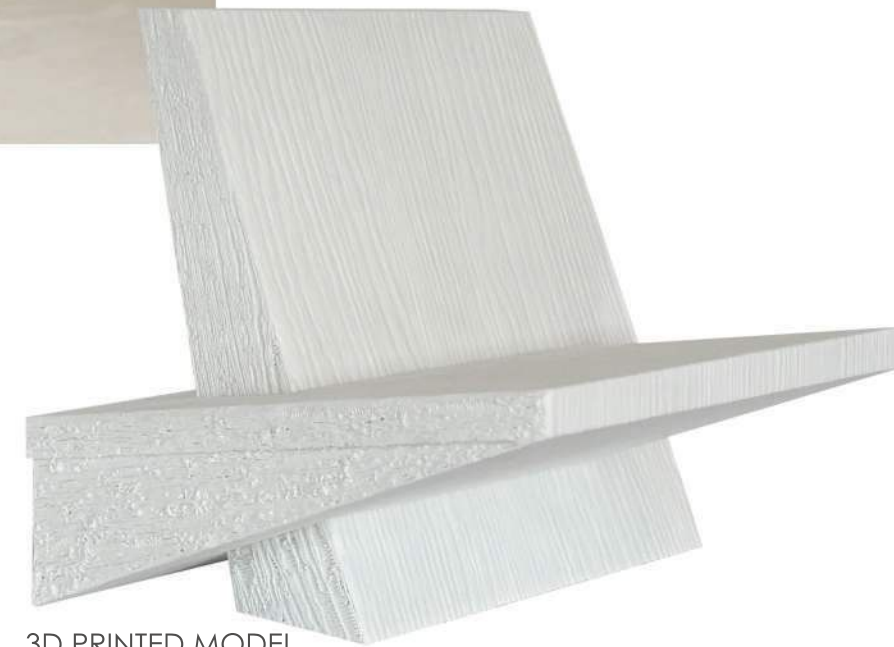
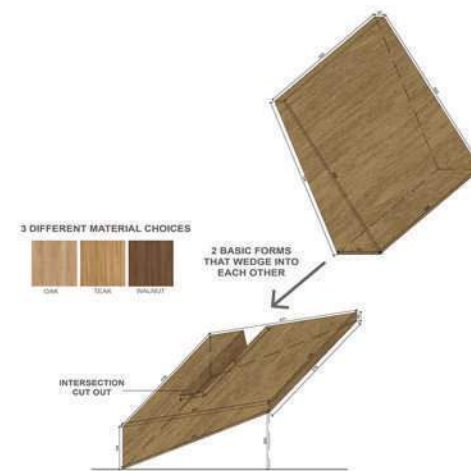
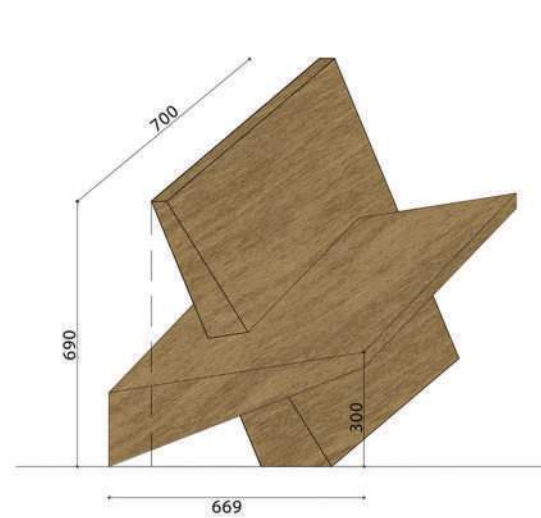
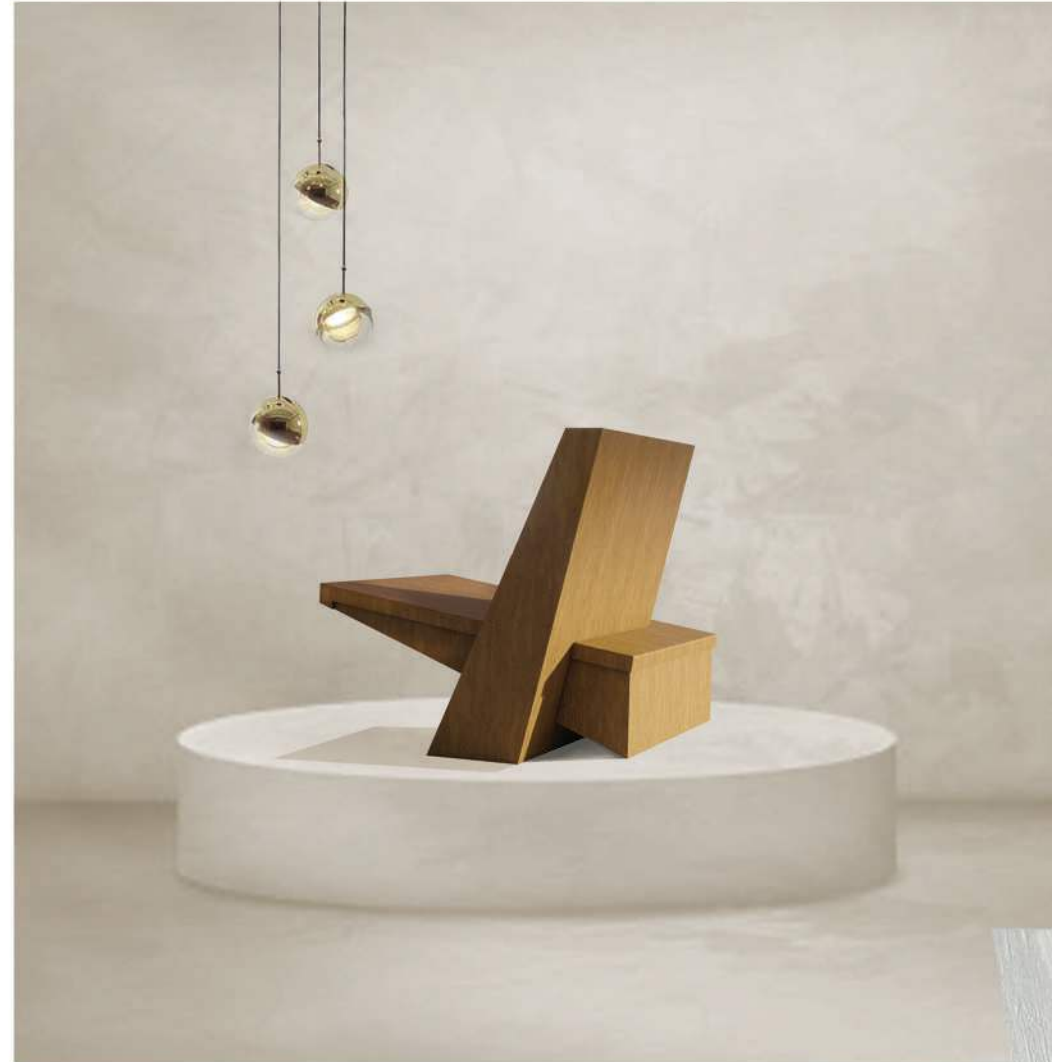
- **CHAIR DESIGN**  
TASK : DESIGN A CONTEMPORARY CHAIR
- **TIMBER BEAD SCREEN**  
TASK : NANDO'S NATIONAL SCREEN COMPETITION 2024
- **SURFACE DESIGN**  
TASK : DESIGN A GEOMETRIC REPEAT





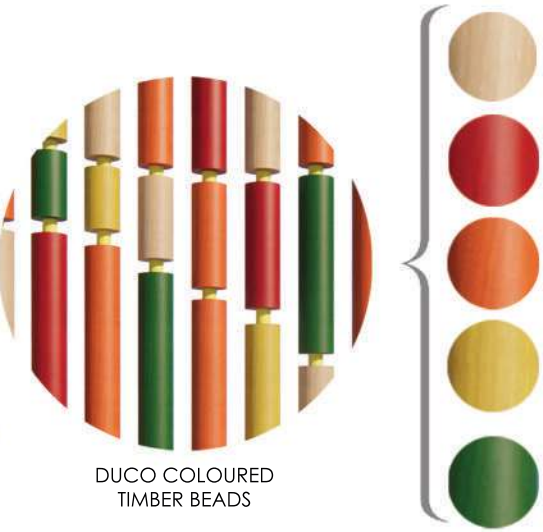
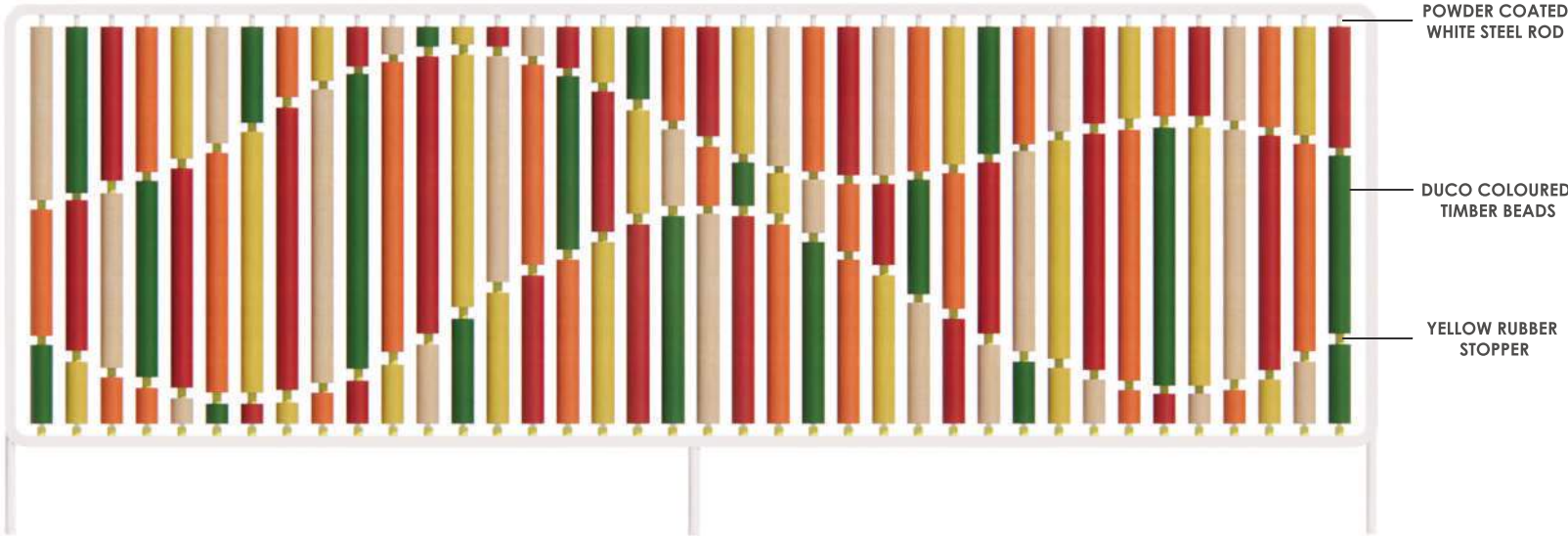
## CHAIR DESIGN

We were tasked with designing a commercially viable chair. The design must be modern and consider various material options and their impact on detailing.



3D PRINTED MODEL

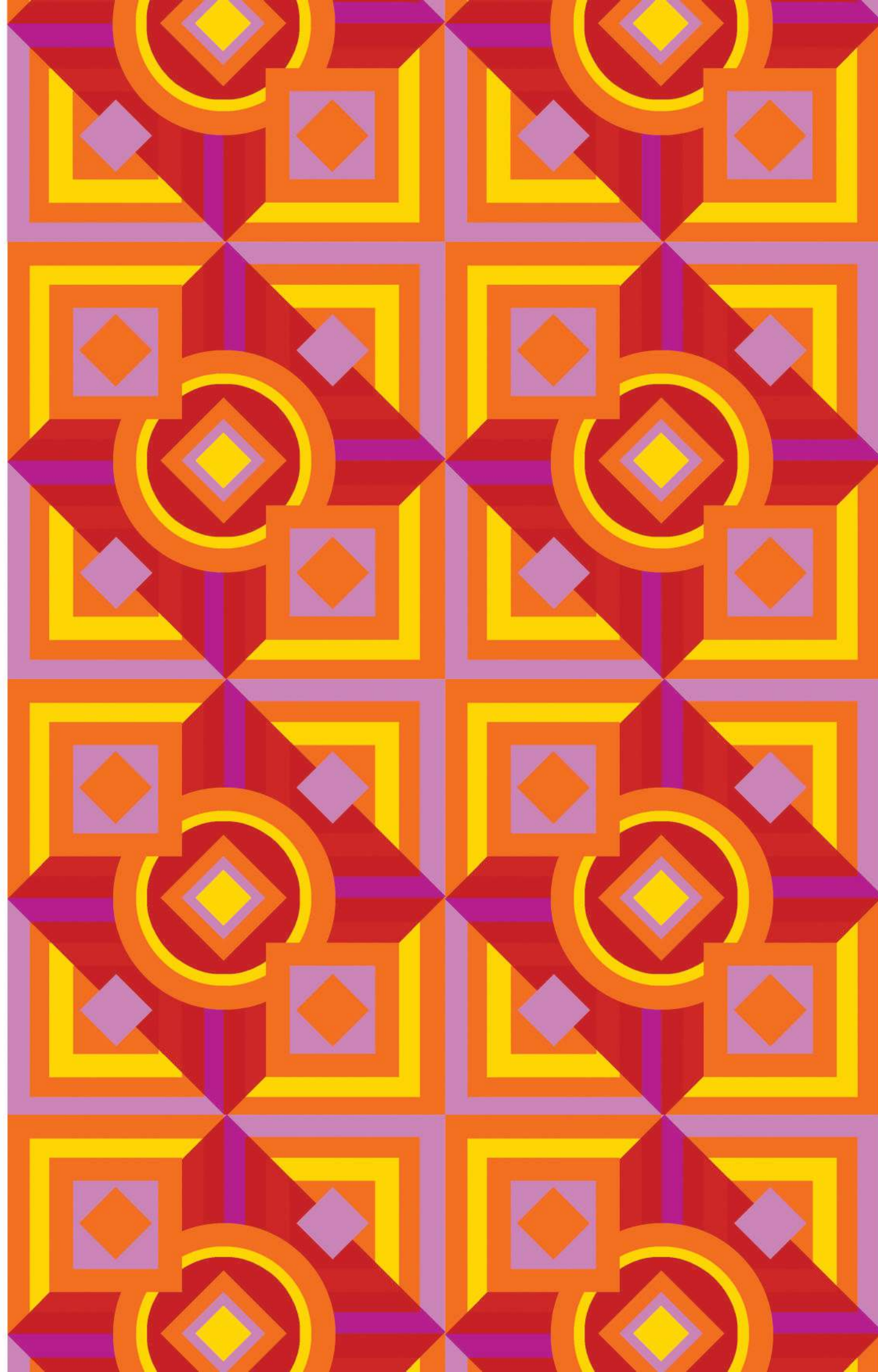
TIMBER BEAD SCREEN







TEXTILE DESIGN



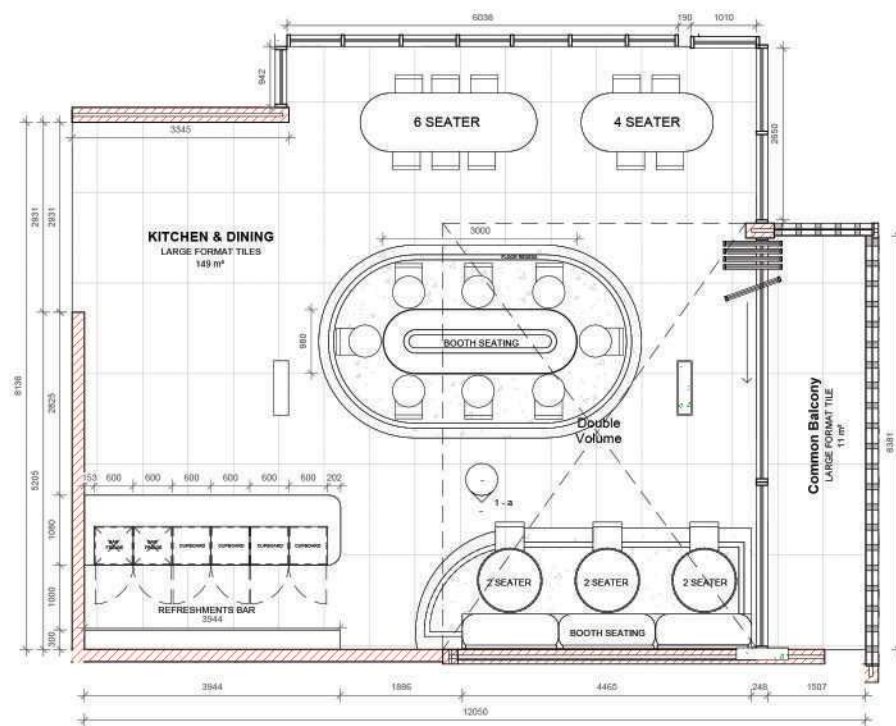




**12**

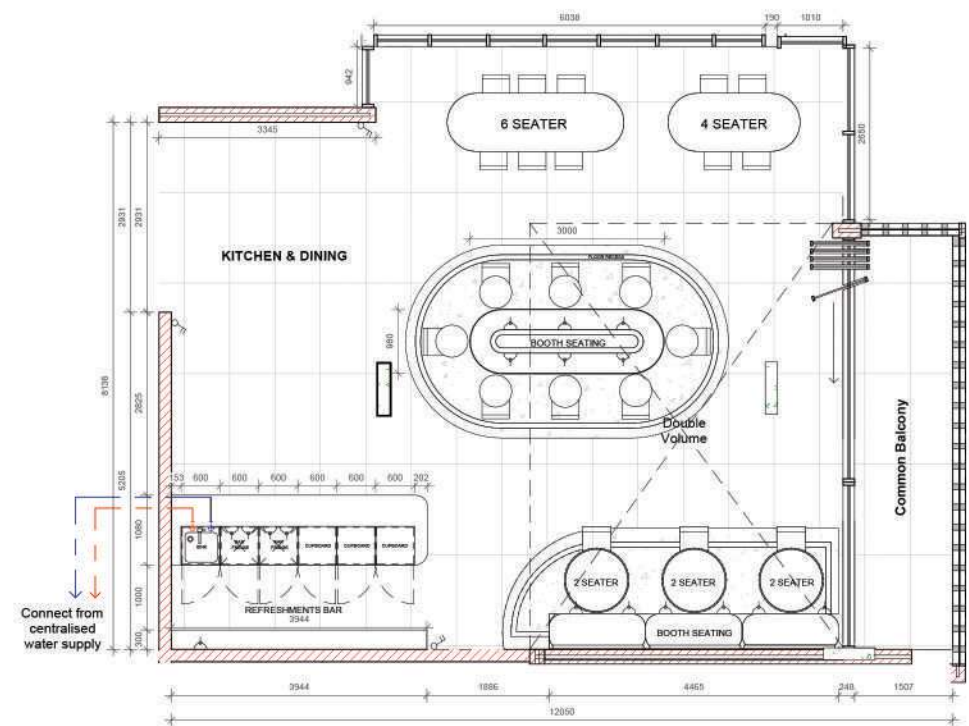
# TECHNICAL DRAWINGS

FIBONACCI - STUDENT ACCOMMODATION



1 KITCHEN & DINING CONSTRUCTION LAYOUT PLAN  
1:100

ELECTRICAL, WATER AND DRAINAGE ON THIS DRAWING IS SCHEMATIC ONLY



2 KITCHEN & DINING WATER & ELECTRICAL PLAN  
1:100

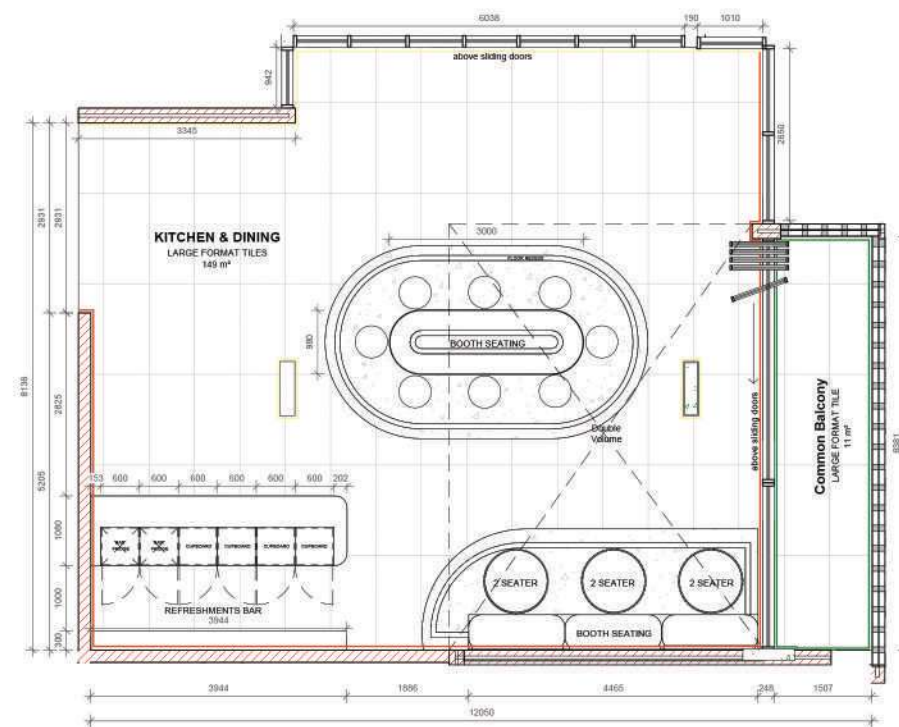
	Single lever switch 1200mm AFFL unless otherwise specified		Distribution Board (DB)
	Double lever switch 1200mm AFFL unless otherwise specified		LED track light
	Quad lever switch 1200mm AFFL unless otherwise specified		Wall light
	Electrical point 300mm AFFL unless otherwise specified		Hot water point (red)
	Single socket power outlet 300mm AFFL unless otherwise specified		Cold water point (blue)
	Double socket power outlet 300mm AFFL unless otherwise specified		Centralised Hot Water System
	LED recessed downlighter		LED pendant light Underside of fitting to be 1500mm AFFL unless otherwise specified

No.	Description	Date

CODE	STATUS	SUITABILITY DESCRIPTION	PURPOSE OF ISSUE

PROJECT	Fibonacci	CLIENT			Grace Taylor	
		Date	Project number	Scale (@ A3)		
SHEET	KITCHEN & DINING PLANS	2024/11/15	P09	1 : 100		
		Drawn by	Drawing Number		REV	
		GT				
		Checked by	ID-103			
		EM				





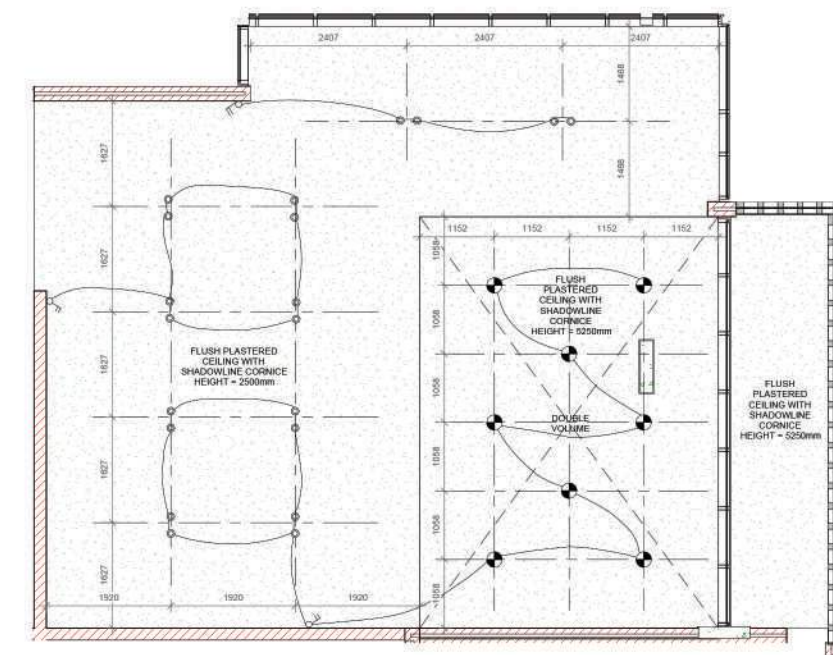
1 KITCHEN & DINING FINISHES PLAN  
1:100

FLOOR FINISHES

	Large format tile, 600mmx1200mm Studio Maison
	Grout Colour Dove Grey
	Grout Spacing 2mm

WALL FINISHES

	Plaster with skin coat, primed and painted 2x coats semigloss dulux
	Concrete - Salicrete finish - Powder
	External plaster and paint

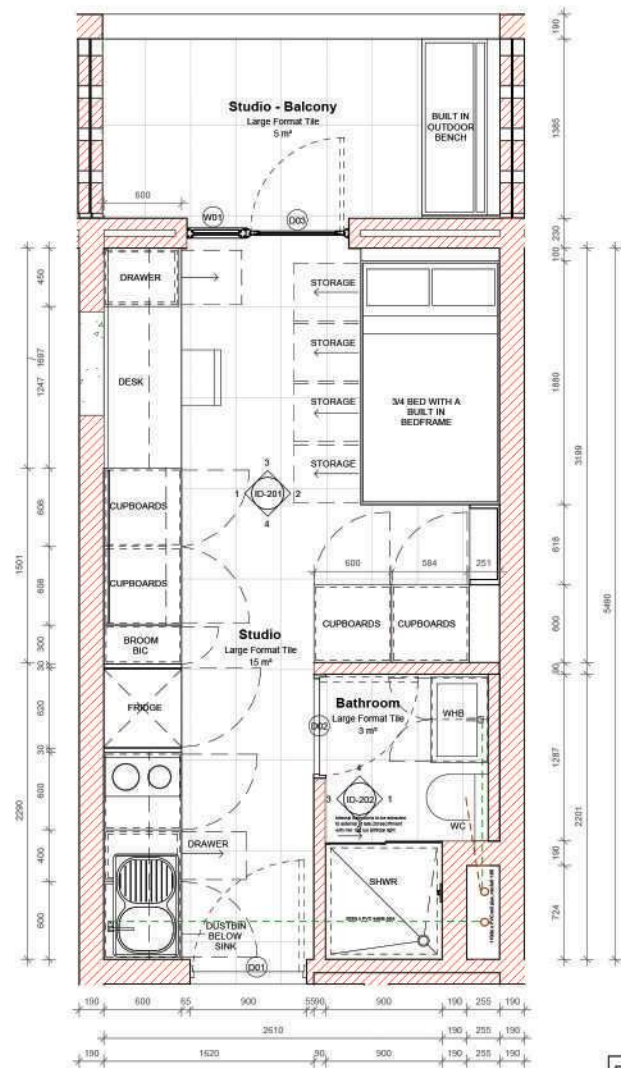


2 KITCHEN & DINING REFLECTED CEILING PLAN  
1:100

CEILING TYPES FINISHES & LIGHTING

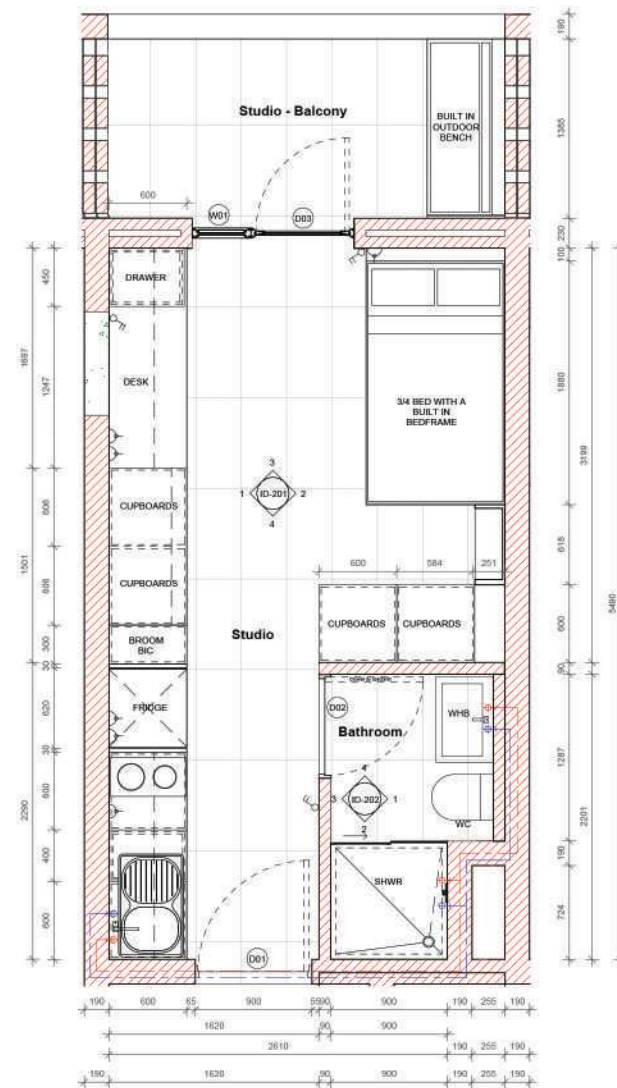
	FLUSH PLASTERED CEILING WITH SHADOWLINE CORNICE HEIGHT = 2500mm
	Single lever switch 1200mm AFFL unless otherwise specified
	Double lever switch 1200mm AFFL unless otherwise specified
	LED recessed downlighter
	LED pendent light Underside of fitting to be 1500mm AFFL unless otherwise specified

No.	Description	Date	PROJECT	CLIENT
			Fibonacci	Grace Taylor
			SHEET	Date 2024/11/15
			KITCHEN & DINING PLANS	Project number P09
				Scale (@ A3) 1 : 100
				Drawn by GT
				Checked by EM
				Drawing Number ID-104
				REV



1 TYPICAL STUDIO CONSTRUCTION LAYOUT  
1:50

ELECTRICAL, WATER AND DRAINAGE ON THIS DRAWING IS SCHEMATIC ONLY



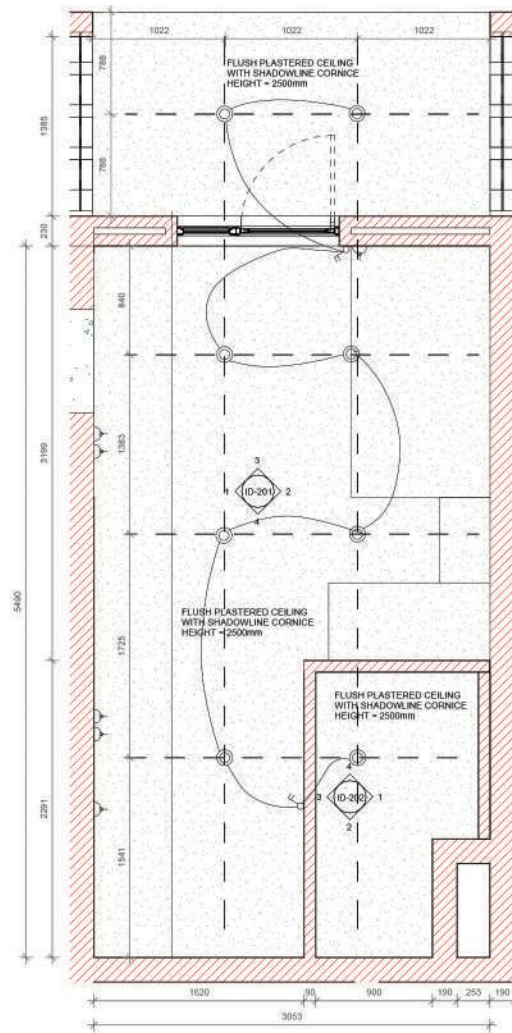
2 TYPICAL STUDIO WATER AND ELECTRICAL PLAN  
1:50

	Single lever switch 1200mm AFFL unless otherwise specified		Distribution Board (DB)
	Double lever switch 1200mm AFFL unless otherwise specified		LED track light
	Quad lever switch 1200mm AFFL unless otherwise specified		Wall light
	Electrical point 300mm AFFL unless otherwise specified		Hot water point (red)
	Single socket power outlet 300mm AFFL unless otherwise specified		Cold water point (blue)
	Double socket power outlet 300mm AFFL unless otherwise specified		Centralised Hot Water System
	LED recessed downlighter		LED pendant light Underside of fitting to be 1500mm AFFL unless otherwise specified

	No.	Description	Date					PROJECT	Grace Taylor		
								Fibonacci			
								Date	Project number	Scale (@ A3)	
							2024/11/15	P09	1 : 50		
							Drawn by	Drawing Number		REV	
							GT				
							Checked by	ID-101			
							EM				

				SHEET	CONSTRUCTION & ELECTRICAL PLANS		
CODE	STATUS	SUITABILITY DESCRIPTION	PURPOSE OF ISSUE				

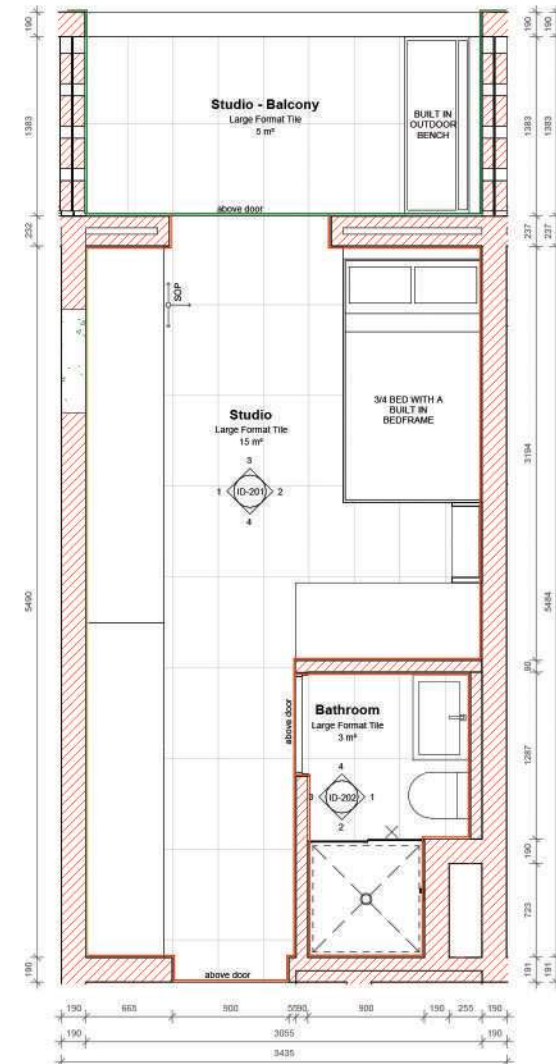




1 TYPICAL STUDIO REFLECTED CEILING PLAN  
1:50

CEILING TYPES FINISHES

FLUSH PLASTERED CEILING WITH SHADOWLINE CORNICE HEIGHT = 2500mm
--



2 TYPICAL STUDIO FINISHES PLAN  
1:50

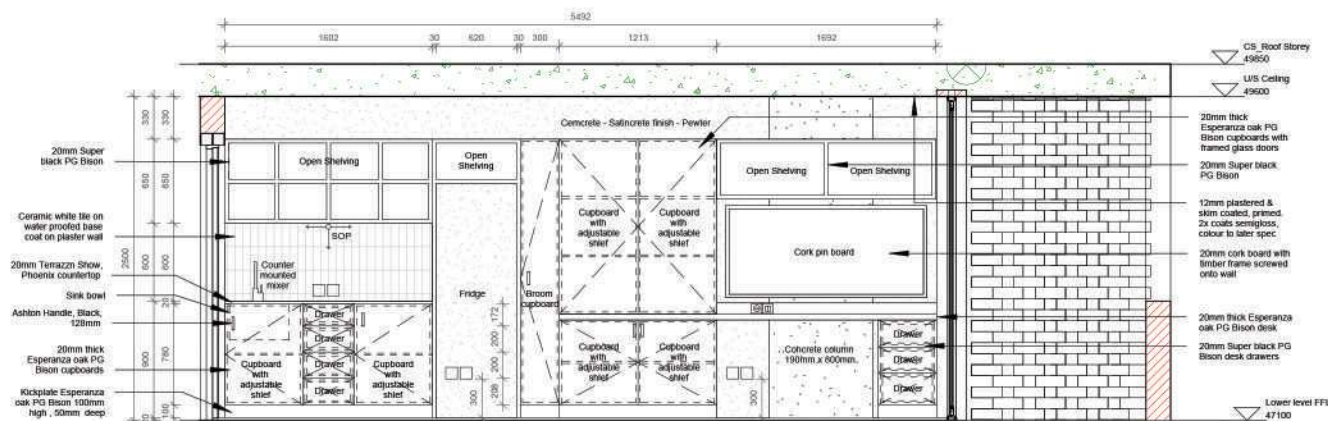
FLOOR FINISHES

Large format tile, 600mmx1200mm
Studio Maison
Grout Colour
Dove Grey
Grout Spacing
2mm

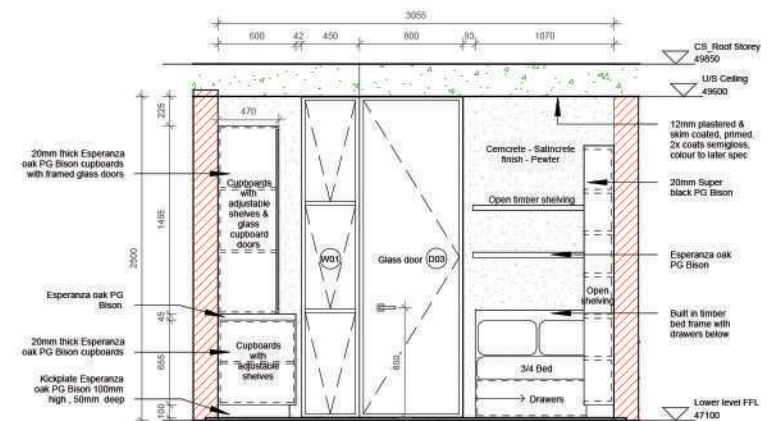
WALL FINISHES

Plaster with skim coat, primed and painted or walls semi-gloss latex
Cementcrete - Salicrete finish - Pewter
External plaster and paint

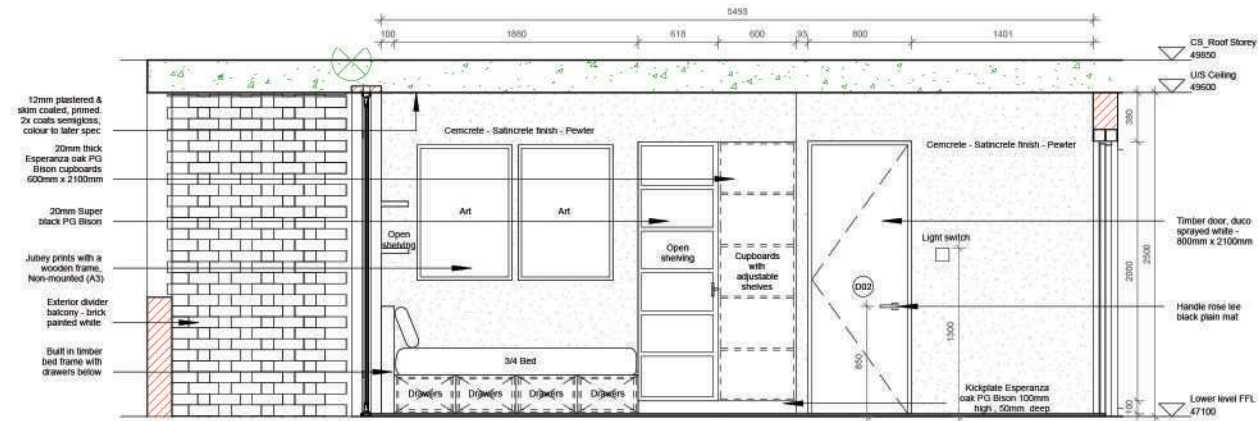
	No.	Description	Date	PROJECT Fibonacci				CLIENT Grace Taylor		
								Date 2024/11/15	Project number P09	Scale (@ A3) 1 : 50
								Drawn by GT	Drawing Number	REV
								Checked by EM	ID-102	
				CODE	STATUS	SUITABILITY DESCRIPTION	PURPOSE OF ISSUE	SHEET REFLECTED CEILING & FINISHES PLAN		



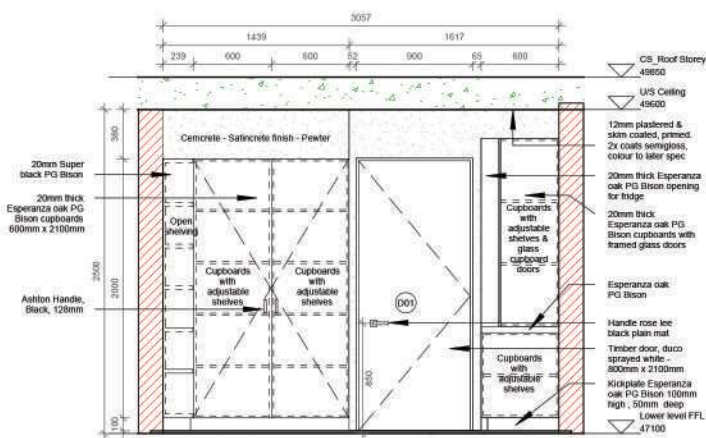
1 STUDIO ELEVATION 1  
1:50



3 STUDIO ELEVATION 3  
1:50



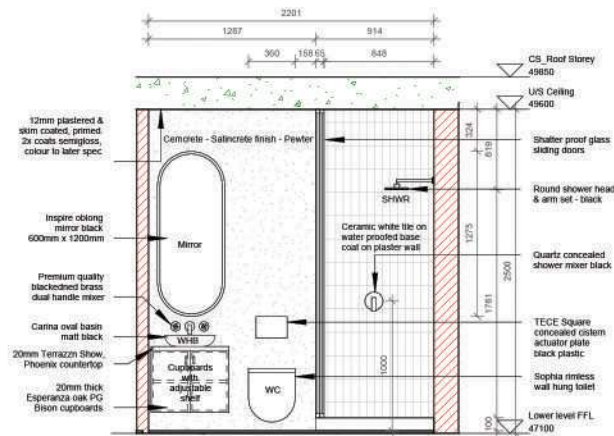
2 STUDIO ELEVATION 2  
1:50



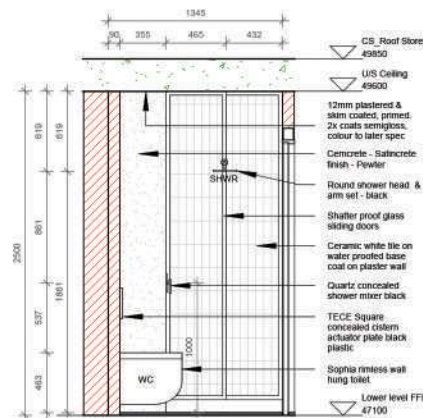
4 STUDIO ELEVATION 4  
1:50

No.	Description	Date	CODE	STATUS	SUITABILITY DESCRIPTION	PURPOSE OF ISSUE	PROJECT	CLIENT	Date	Project number	Scale (@ A3)	REV
							Fibonacci	Grace Taylor	2024/11/15	P09	1:50	
							STUDIO ELEVATIONS		GT	Drawing Number		
									EM	ID-201		

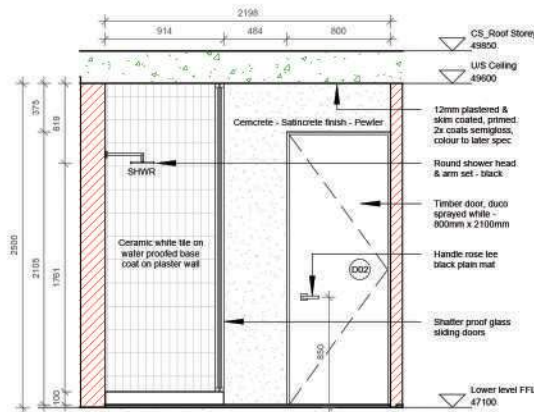




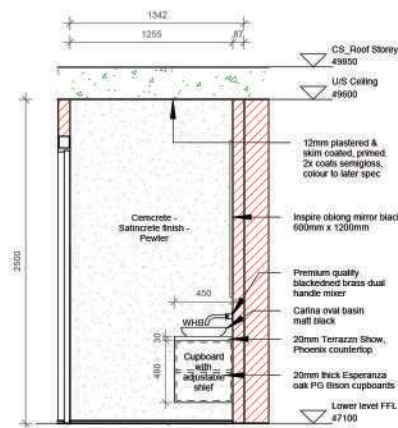
1 BATHROOM ELEVATION 1  
1:50



2 BATHROOM ELEVATION 3  
1:50



3 BATHROOM ELEVATION 2  
1:50



4 BATHROOM ELEVATION 4  
1:50

## FF&E SCHEDULE

### LIGHTING AND ELECTRICAL FF&E SCHEDULE

	ROOM / AREA	SPEC	SUPPLIER	QUANTITY	PRICE	TOTALS	LINK	COMMENTS	PICTURE
Downlights	Studio Apartment Internal Areas And Exterior Balcony	Burndy 5190M Round Downlight - Gun Metal	Builders Warehouse	5	R 98	R 490	<a href="https://www.builders.co.za/lighting/downlight-light">https://www.builders.co.za/lighting/downlight-light</a>	Gun Metal Finish, 80mm Diameter	
1 Level Light Switch	Internal	Wall Switch 1-Lever - White	Builders Warehouse	2	R 90	R 180	<a href="https://www.builders.co.za/lighting/switches/1-level-switch">https://www.builders.co.za/lighting/switches/1-level-switch</a>	Switch To Be White. One for Bathroom Light, One for Bedroom Downlights, One for Wall Scones, One for Balcony Downlights	
Internal Socket	All Internal	CSI 4x4 Double Socket White	Builders Warehouse	4	R 98	R 392	<a href="https://www.builders.co.za/electrical/sockets/4x4-double-socket-white">https://www.builders.co.za/electrical/sockets/4x4-double-socket-white</a>	1 to be in Kitchen on Backsplash, 1 to be behind the Fridge, 1 to be on the desk splash back, 1 to be below the desk	
Internal Socket	All Internal	Builders 16A Single Switch Socket	Builders Warehouse	5	R 155	R 775	<a href="https://www.builders.co.za/electrical/sockets/16a-single-switch-socket">https://www.builders.co.za/electrical/sockets/16a-single-switch-socket</a>	1 to be in Kitchen on Backsplash, 1 to be behind the Fridge, 1 to be on the desk splash back, 1 to be below the desk, 1 to be built into desk	

### FURNITURE, EQUIPMENT

	ROOM / AREA	SPEC	SUPPLIER	QUANTITY	PRICE	TOTALS	LINK	COMMENTS	PICTURE
Fridge	Kitchen	Hotpoint 204L3 Compact Refrigerator	Hech's	1	R 4999	R 4999	<a href="https://www.hech.co.za/hotpoint-204l3-compact-refrigerator">https://www.hech.co.za/hotpoint-204l3-compact-refrigerator</a>	Bottom Freezer	
Microwave	Kitchen	Russell Hobbs RH6RZ25 25LW Black Mirror Finish Manual Microwave	Hech's	1	R 1299	R 1299	<a href="https://www.hech.co.za/russell-hobbs-rh6rz25-25l-w-black-mirror-finish-manual-microwave">https://www.hech.co.za/russell-hobbs-rh6rz25-25l-w-black-mirror-finish-manual-microwave</a>	Stainless Steel	
Kettle	Kitchen	Safer 1.7L Cordless Glass Kettle	Hech's	1	R 419	R 419	<a href="https://www.hech.co.za/safer-1-7l-cordless-glass-kettle">https://www.hech.co.za/safer-1-7l-cordless-glass-kettle</a>	Glass and Stainless Steel	
Toaster	Kitchen	Saferway 2-Slice Toaster Black 750W	Clicks	1	R 269	R 269	<a href="https://clicks.co.za/saferway-2-slice-toaster-black">https://clicks.co.za/saferway-2-slice-toaster-black</a>	Kitchen	
Air Fryer	Kitchen	Silver Crest 5-10 Air Fryer (4.5L)	Makro	1	R 698	R 698	<a href="https://www.makro.co.za/silver-crest-5-10-air-fryer-4-5l">https://www.makro.co.za/silver-crest-5-10-air-fryer-4-5l</a>	Kitchen	
Desk Chair	Bedroom	Zoom MidBack Chair	Makro	1	R 999	R 999	<a href="https://www.makro.co.za/zoom-midback-office-chair">https://www.makro.co.za/zoom-midback-office-chair</a>	desk chair	
Strip Lights	Kitchen and Bedroom	6 Light VM-3025-60CM 40 LED's per meter 12V Gsm Plug Strip (2000 per meter) Cool White	Glo Lighting	3.0m	R 210	R 630	<a href="https://www.glo.co.za/lighting/lighting-vm-3025-60cm-40-leds-per-meter-12v-gsm-plug-strip-2000-per-meter-cool-white">https://www.glo.co.za/lighting/lighting-vm-3025-60cm-40-leds-per-meter-12v-gsm-plug-strip-2000-per-meter-cool-white</a>	Dimmed by Each Area, Under Kitchen Top Cupboards, On Sides of Bulbhead	
Mirror	Bathroom	Inspire oblong mirror black 60x120cm	Leroy Merle	1	R 6000	R 6000	<a href="https://www.leroymerle.co.za/inspire-oblong-mirror-black">https://www.leroymerle.co.za/inspire-oblong-mirror-black</a>	Mirror	
Artwork	Bedroom	Non-mounted A3 Art print	Jabys Photo	2	R 60	R 120	<a href="https://www.jabys.co.za/non-mounted-a3-art-print">https://www.jabys.co.za/non-mounted-a3-art-print</a>	100% Polyester Fabric	
Handles	All Internal	Cupboard Handles - Modern - Matte Black	Leroy Merle	14	R 75	R 1050	<a href="https://www.leroymerle.co.za/cupboard-handle-modern">https://www.leroymerle.co.za/cupboard-handle-modern</a>	Modern cupboard handle in a matte black finish, BARCELONA 16mm CTC MATT BLACK	
Swivel TV Bracket	Bedroom	Door Handle - Modern - Black metal	Leroy Merle	2	R 249	R 498	<a href="https://www.leroymerle.co.za/door-handle-modern-black-metal">https://www.leroymerle.co.za/door-handle-modern-black-metal</a>	Modern matte black metal door handle	

### PLUMBING

	ROOM / AREA	SPEC	SUPPLIER	QUANTITY	PRICE	TOTALS	LINK	COMMENTS	PICTURE
Sink	Kitchen	Kitchen Sink Double Bowl Stainless Steel	Leroy Merle	1	R 3099	R 3099	<a href="https://www.leroymerle.co.za/kitchen-sink-double-bowl">https://www.leroymerle.co.za/kitchen-sink-double-bowl</a>	AISI Scratch LOCKX 1W45.5cm	
Sink Faucet	Kitchen	Sink Tap 21168 Sink Mixer Faucet	Makro	1	R 559	R 559	<a href="https://www.makro.co.za/sink-tap-21168-sink-mixer-faucet">https://www.makro.co.za/sink-tap-21168-sink-mixer-faucet</a>	20cm(L) x 43.5cm(W) x 5.5cm(H)	
Basin	Bathroom	Basin Flatio CT Vase	Euronord	1	R 1950	R 1950	<a href="https://www.euronord.co.za/basin-flatio-ct-vase">https://www.euronord.co.za/basin-flatio-ct-vase</a>	605 x 370 x 125mm	
Basin Tap	Bathroom	Square Black Basin Mixer Waterfall Faucet Bathroom Tap	Leroy Merle	1	R 799	R 799	<a href="https://www.leroymerle.co.za/square-black-basin-mixer">https://www.leroymerle.co.za/square-black-basin-mixer</a>	This faucet has a square design with rounded edges	
Shower Tap	Bathroom	ITD Black Lamp Shower Head Including Drain	CTM	1	R 3,299.90	R 3,299.90	<a href="https://www.ctm.co.za/itm-black-lamp-shower-head-including-drain">https://www.ctm.co.za/itm-black-lamp-shower-head-including-drain</a>	Bathroom	
Shower Head	Bathroom	Digital Display Black Shower Head	Leroy Merle	1	R 999	R 999	<a href="https://www.leroymerle.co.za/digital-display-black-shower-head">https://www.leroymerle.co.za/digital-display-black-shower-head</a>	Digital Shower Head Black 400mm(16")	
Flush Plate	Bathroom	Capri Black Dual Flush Plate	Italia	1	R 1450	R 1450	<a href="https://www.italia.co.za/capri-black-dual-flush-plate">https://www.italia.co.za/capri-black-dual-flush-plate</a>	256x150mm	
Toilet	Bathroom	Serena Compact Toilet Floor Mounted Ceramic White	Leroy Merle	1	R 1199	R 1199	<a href="https://www.leroymerle.co.za/serena-compact-toilet">https://www.leroymerle.co.za/serena-compact-toilet</a>	W415mm/D565mm/H422mm (Includes Toilet Seat, Ennobles Concealed Cistern And Flush Flap)	
Shower mixer	Bathroom	Triumph Magnette Underline Shower Mixer Black	Leroy Merle	1	R 1499	R 1499	<a href="https://www.leroymerle.co.za/triumph-magnette-underline-shower-mixer-black">https://www.leroymerle.co.za/triumph-magnette-underline-shower-mixer-black</a>	Stylish magnette black finish	

	No.	Description	Date

				PROJECT	CLIENT		
				Fibonacci		Grace Taylor	
				SHEET	Date	Project number	Scale (@ A3)
					2024/11/15	P09	1 : 50
					Drawn by	Drawing Number	
GT	ID-202						
				Checked by			
				EM			

CODE	STATUS	SUITABILITY DESCRIPTION	PURPOSE OF ISSUE

				STUDIO BATHROOM ELEVATIONS	
--	--	--	--	----------------------------	--





# ACHIEVEMENT CERTIFICATES

PG BISON & KSA KITCHEN DESIGN



SPECIAL MENTION - AESTHETICS

THIS IS PRESENTED TO

*GRACE TAYLOR*

for receiving a special mention for  
design aesthetics in the KSA's 2024  
Student Kitchen Design Project

  
STEPHANIE FORBES  
KSA NATIONAL MANAGER

  
ksa  
The Kitchen Specialists  
ASSOCIATION

