





L u k e B u t l e r

INDEX:

FIREFLYDESIGNS | LUKE BUTLER

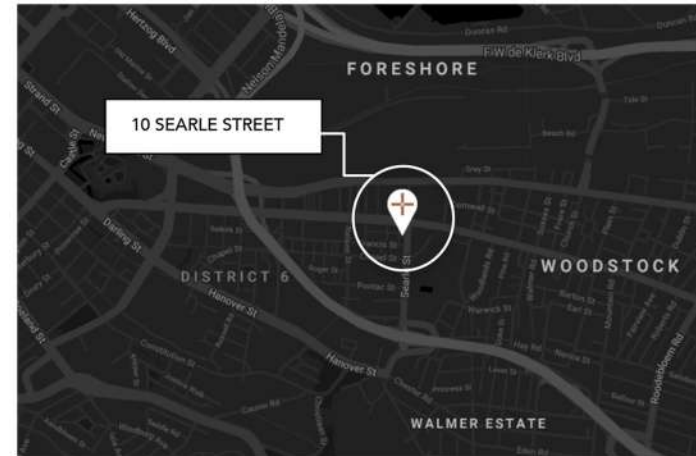
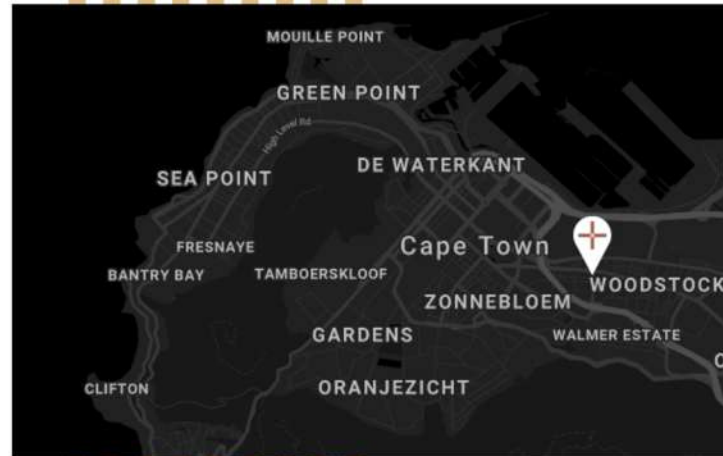
INTERIOR DESIGN | DESIGN TIME

PROJECTS:	PAGES:
THE URBAN EXPERIENCE	1.
KSA KITCHEN DESIGN	5.
TREE HOUSE	9.
DOCK HAUS	12.
PESCE AZZURRO	15.
LITTLEBIG FESTIVAL	18.
RETAIL DESIGN	22.

THE URBAN EXPERIENCE:

THE HOTEL | LUKE BUTLER

LOCATION | 2ND FLOOR, 10 SEARLE STREET WOODSTOCK, CAPE TOWN



Reception + Waiting Lounge :

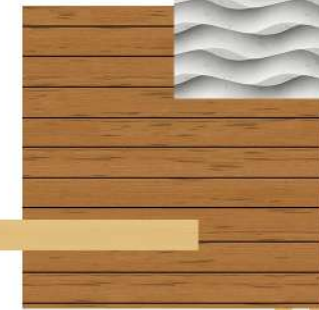
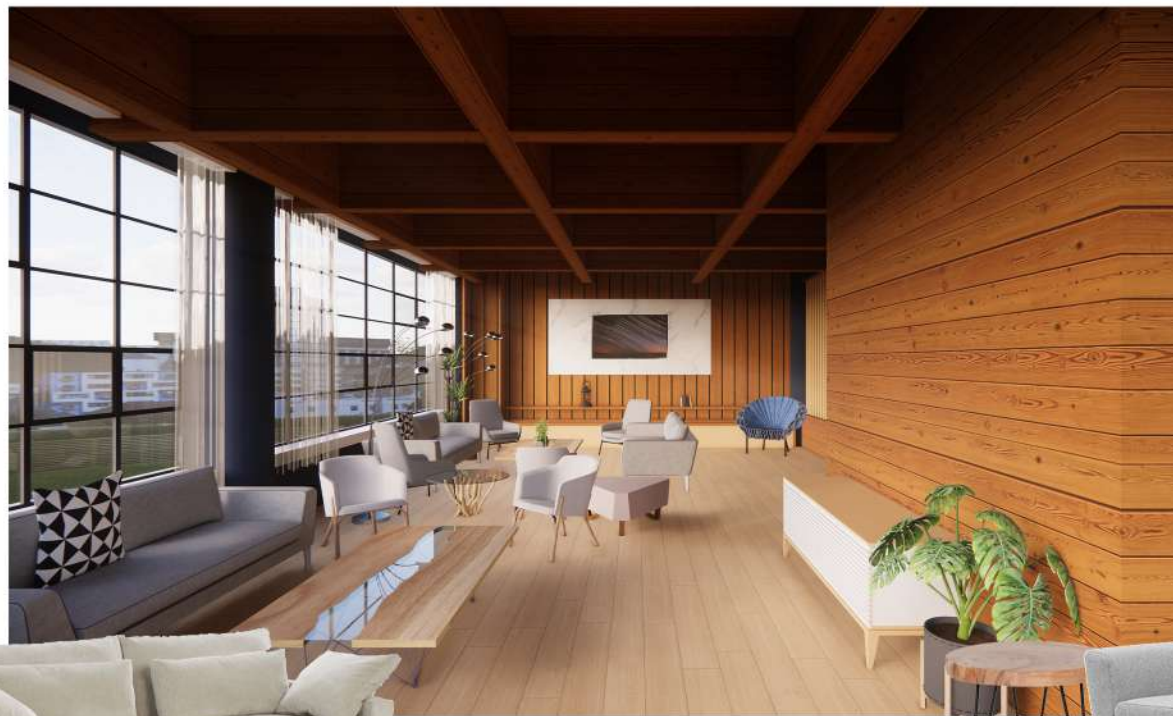


THE URBAN EXPERIENCE:

RESTAURANT + BAR:



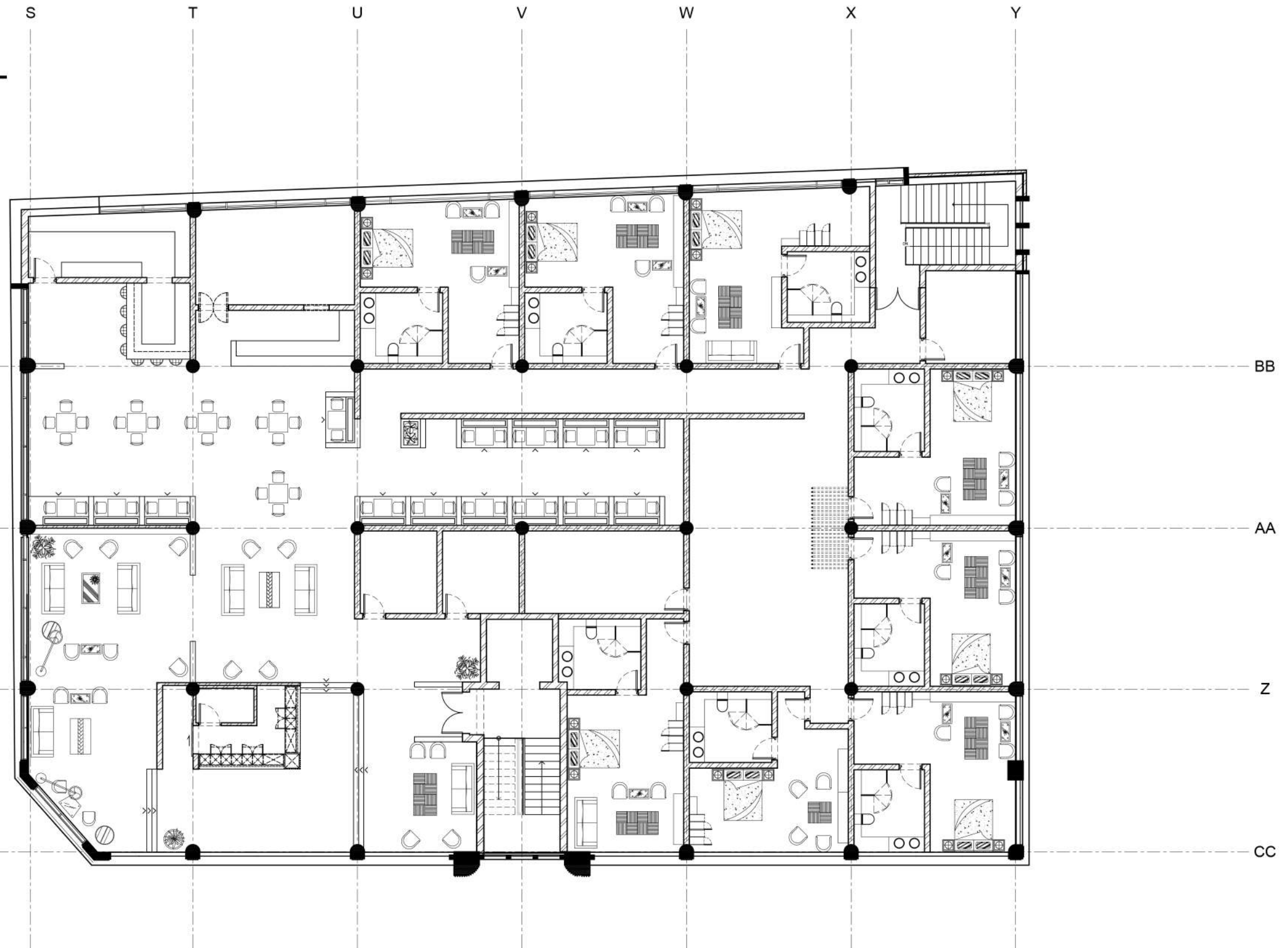
LOUNGE:



THE URBAN EXPERIENCE:

THE HOTEL

Floorplan:



SECOND FLOOR

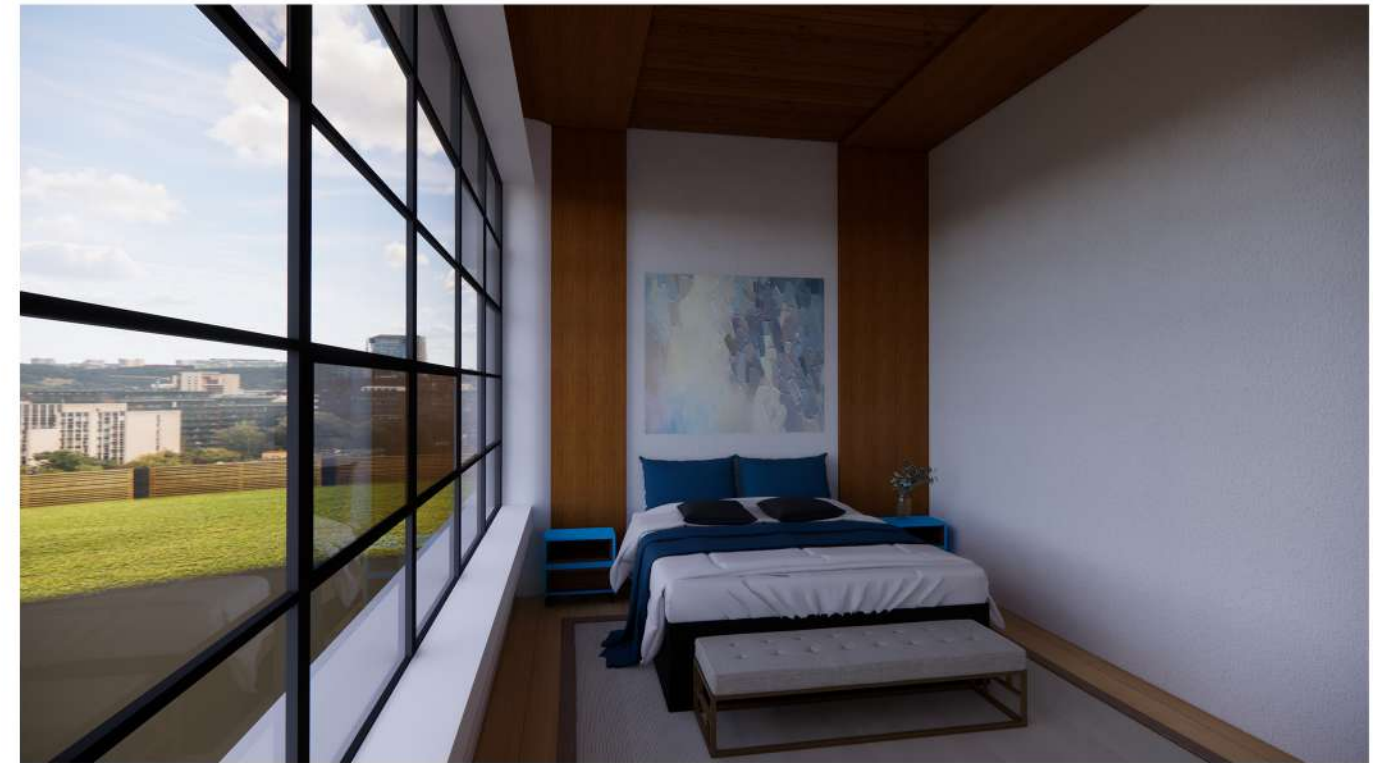
SCALE nts

THE URBAN EXPERIENCE:

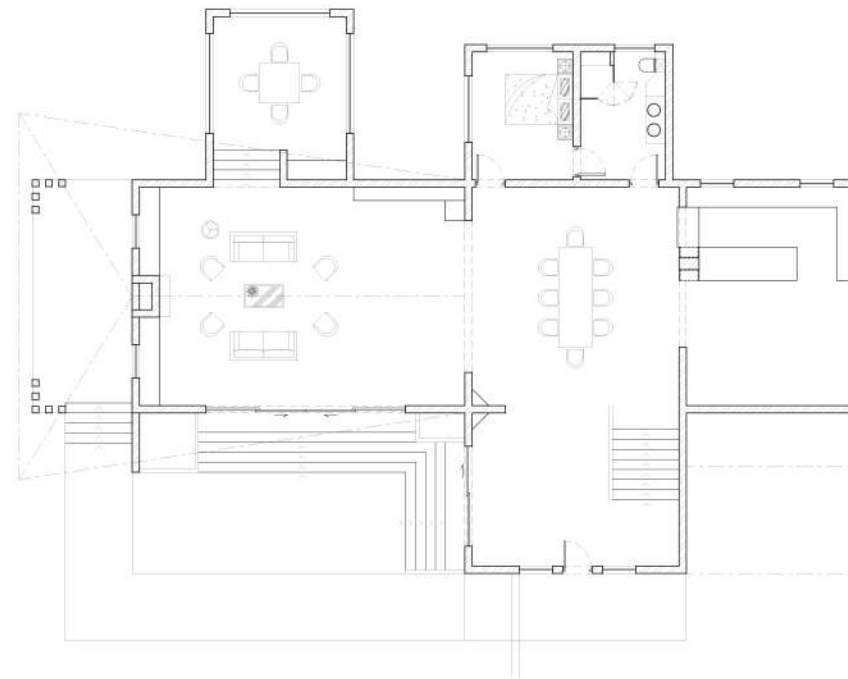
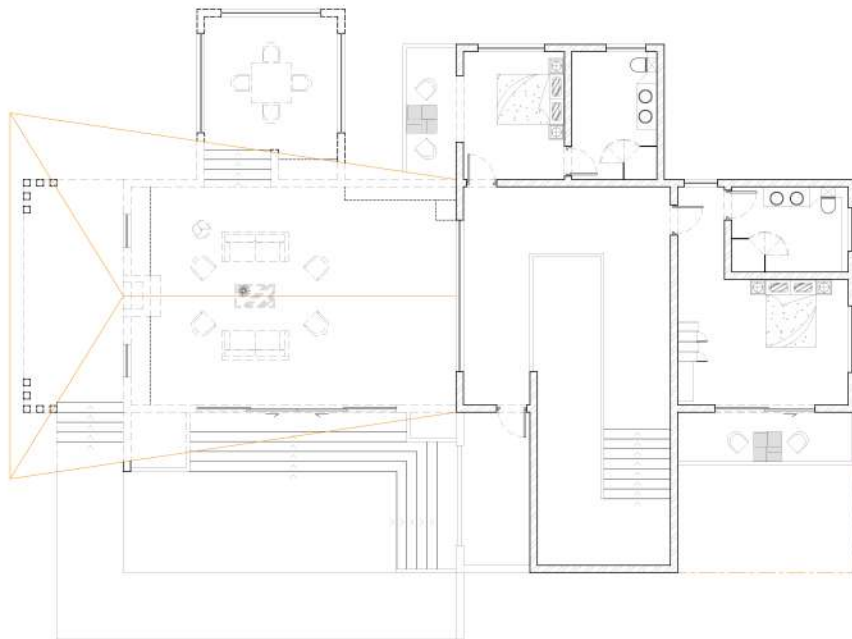
SECONDARY LOUNGE



BEDROOM



ECO POD Floorplan



KSA | Kitchen Design:

FRONT VIEW



PANTRY AREA



GALLEY AREA



KSA | Kitchen Design:

TOP VIEW AXO PLAN



KSA | Kitchen Design:

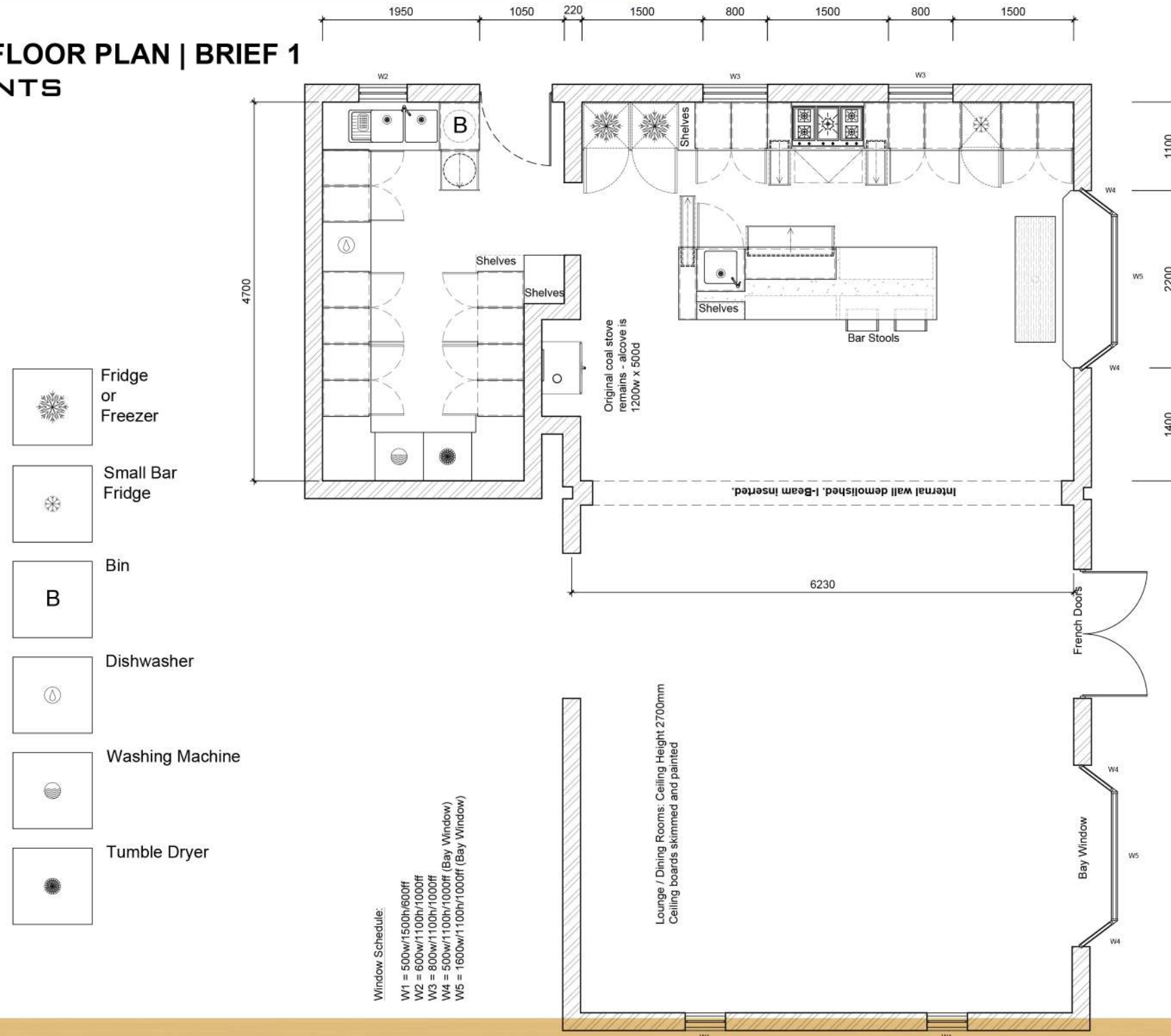
TOP VIEW PLAN



KSA | Kitchen Design:

FLOORPLAN

FLOOR PLAN | BRIEF 1 NTS



TREE HOUSE:

LOCATION | BAOBAB FORESTS OF MADAGASCAR

BAO-UP RETREAT

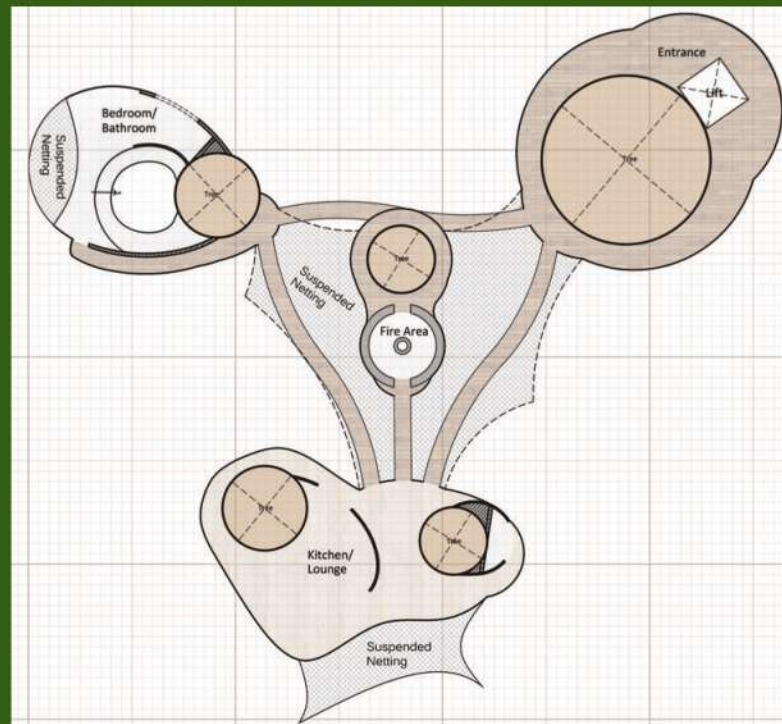
Bao-Up is a collective of airborne pods in the majestic baobab forests of Madagascar. A space for creatives of all backgrounds to get in touch with themselves again. The design of the collective is an upwards-pointing triangle as they represent direction and power as well as using organic shapes and materials to mirror the majesty and power of the surrounding forest.

"Go deeply into the urge to be silent and not the mental interference of how, where and when. If you follow silence to its source you can be taken by it in a moment."
- Jean Klein

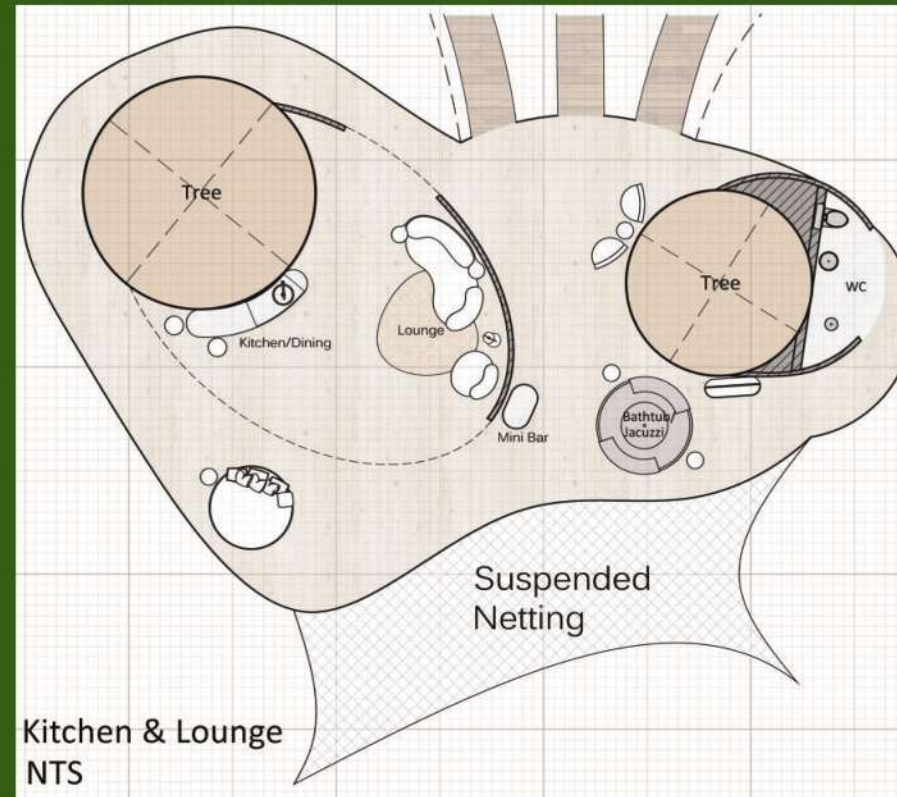


TREE HOUSE:

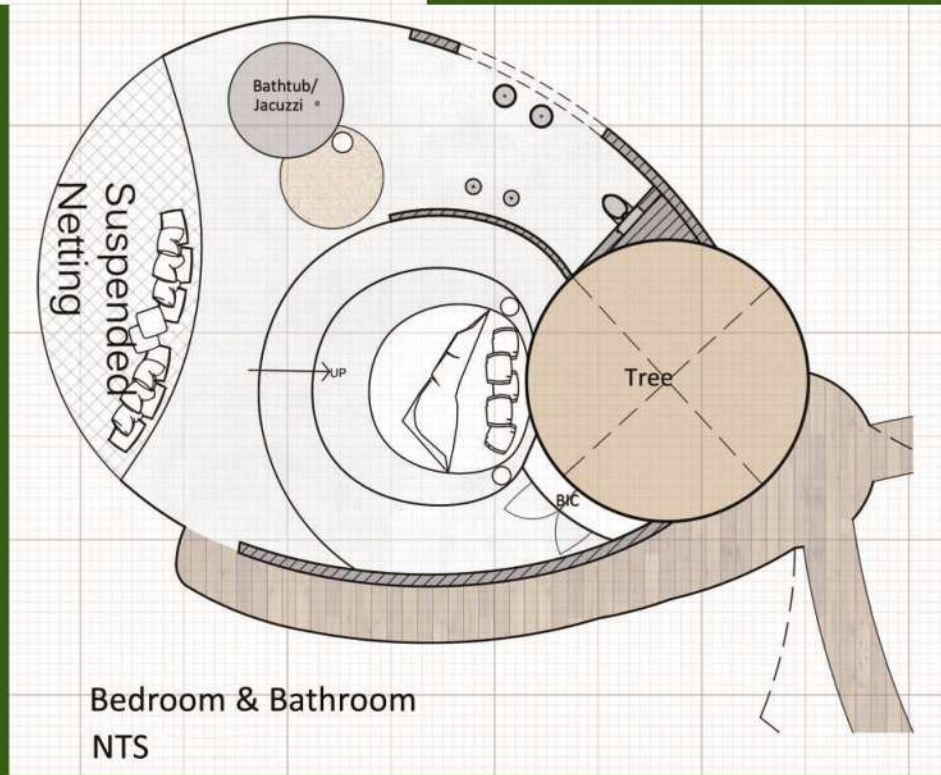
FLOORPLAN:



Overall Plan
NTS



Kitchen & Lounge
NTS



Bedroom & Bathroom
NTS



Fire Area
NTS



TREE HOUSE:

PERSPECTIVES:



BEDROOM



BEDROOM CLOSE UP



MAIN BATHROOM



KITCHEN & LOUNGE



JACUZZI

DOCK HAUS:

by Luke Butler, Katya Goncalves & AJ Van Der Hoeven



1ST PERSPECTIVE FROM FAR/ RECEPTION AREA

CONCEPT

OUR CONCEPT WAS TO CREATE AN ELEGANT HOTEL RECEPTION AND LOBBY FOR A NEW BOUTIQUE HOTEL COMING UP AT THE VNA WATERFRONT. OUR HOTEL WAS INSPIRED BY KELLY WEARSTLER AND HER ABILITY TO CREATE CHAOTIC HARMONY. WE HAVE GONE WITH MARBLE AND TIMBER FINISHES COMBINED WITH INTERNATIONALLY RENOWNED DESIGNER PIECES AND BRIGHT ABSTRACT ART.



LOCATION



SCREEN DIVIDER FROM AFAR



LIFT PERSPECTIVE



FURNITURE/MATERIAL STRIP



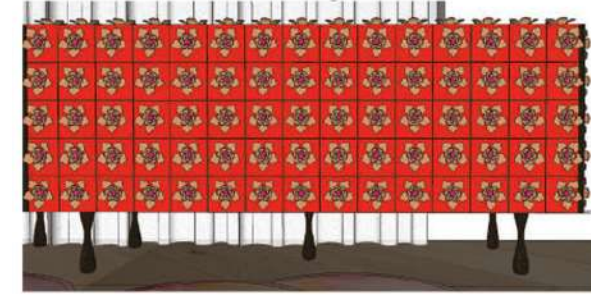
DOCK HAUS:



LOUNGE AREA



CLOSE UP OF LOUNGE AREA



FURNITURE/MATERIAL STRIP



COFFEE BAR/ WAITING AREA



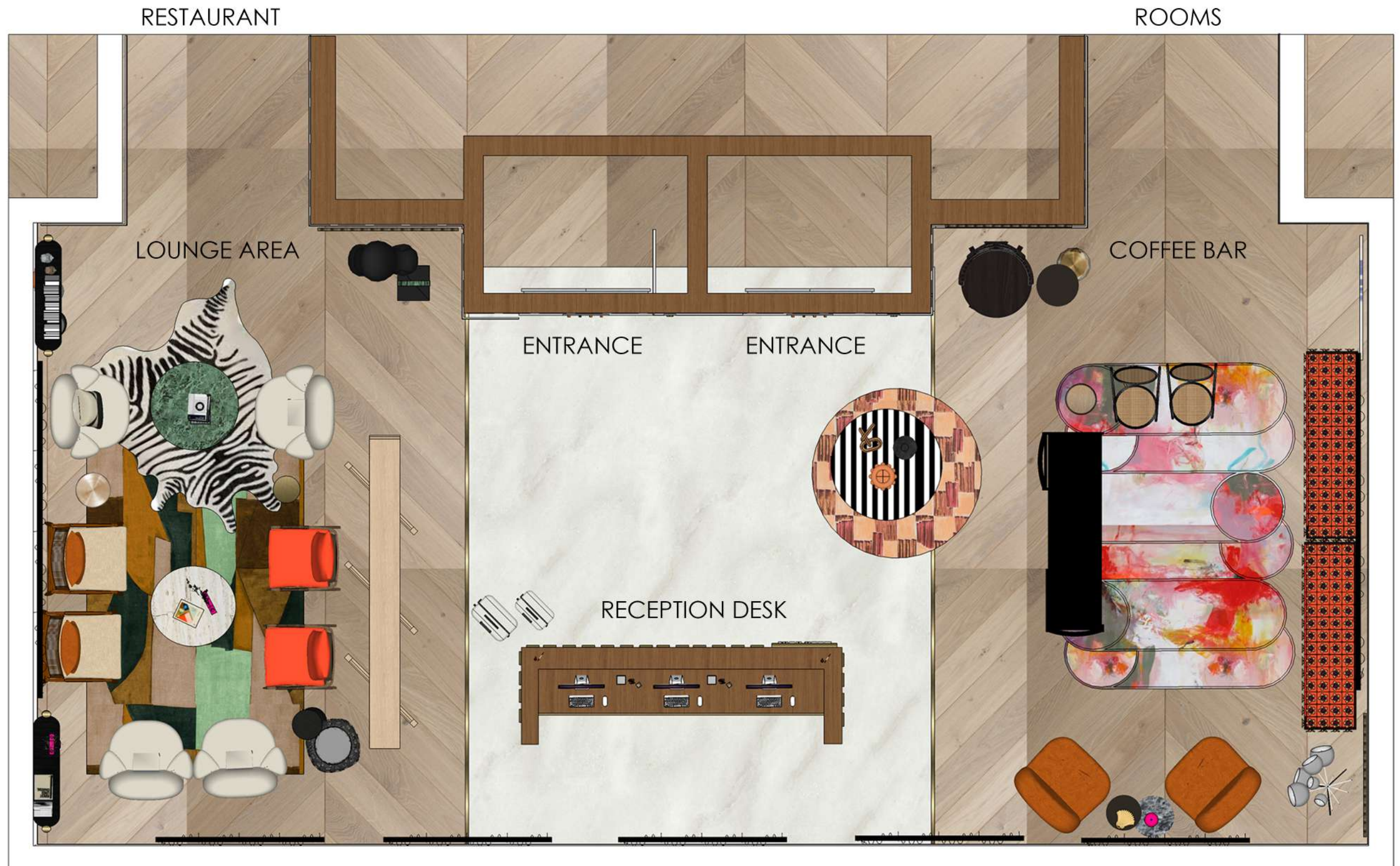
CLOSE UP



CLOSE UPS OF CORNER AREAS NEXT TO LIFT

DOCK HAUS:

FLOORPLAN



NTS

PESCE AZZURRO:

RESTAURANT DESIGN

LOCATION | CNR. BREE + WATERKANT STREET, CAPE TOWN



FRONT VIEW PERSPECTIVE



PERSPECTIVE OF BAR AND DINING



FIRST IMPRESSION VIEW

PESCE AZZURRO:

RESTAURANT DESIGN

PERSPECTIVES



PERSPECTIVE OF BAR DESIGN AND DINING



PERSPECTIVE OF BAR DESIGN AND DINING



PERSPECTIVE OF WINE CELLAR



PERSPECTIVE OF MEZZANINE DINING



PERSPECTIVE OF DELI

PESCE AZZURRO:

FLOORPLAN



GROUND FLOOR PLAN
NTS

WATERKANT STREET



UPPER GROUND FLOOR PLAN
NTS



littleBIG | 2022 FESTIVAL

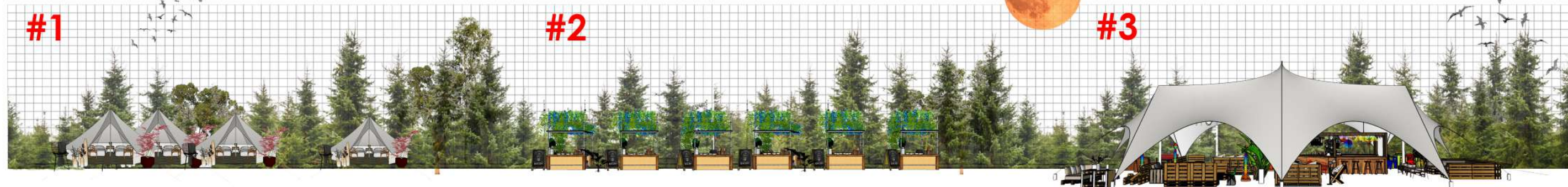
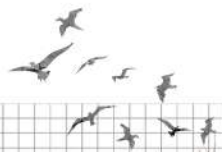
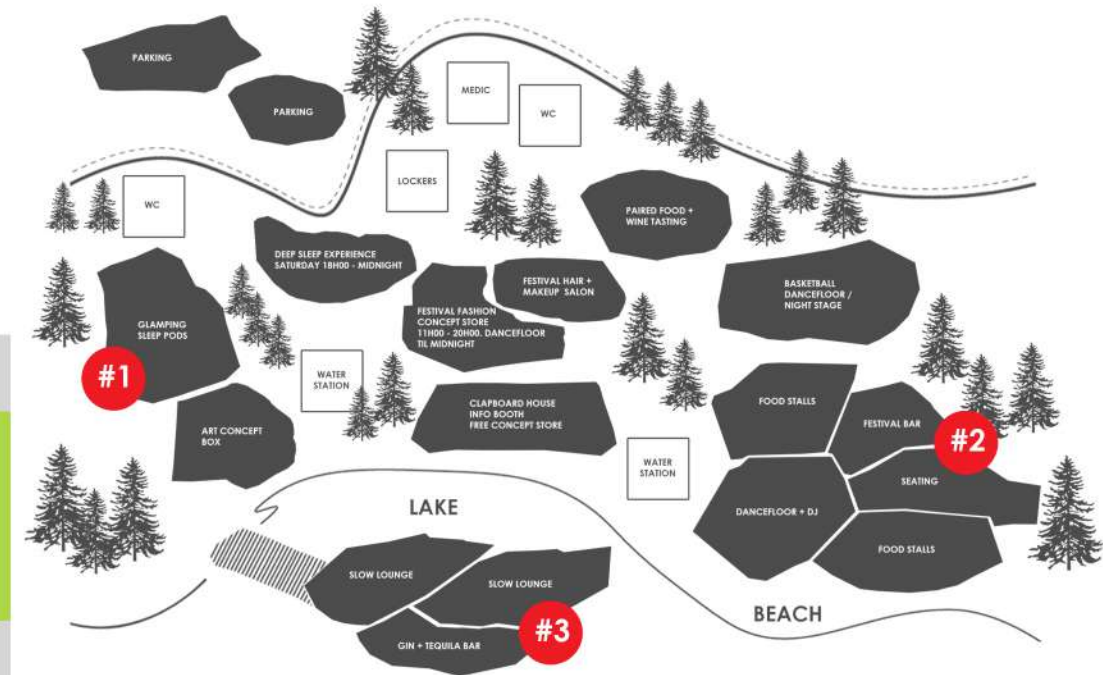
BY LUKE BUTLER
(FIREFLYDESIGNS)

LIFE'S TOO SHORT TO BE 'NORMAL'. ARE YOU READY?

LOCATION: WIESENHOF FARM | STELLENBOSCH
DATE: SATURDAY 26 FEBRUARY 2022

IN THIS DESIGN I WANTED TO CREATE A JUNGLE AND PLANT THEME THAT FLOWS WITH A FESTIVAL. I ADDED BRIGHT SOLID COLOURS TO MAKE THE FESTIVAL LOOK MORE FUN.

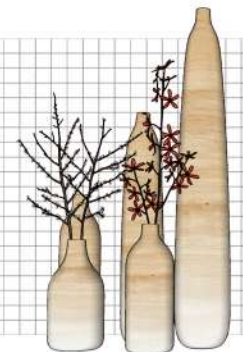
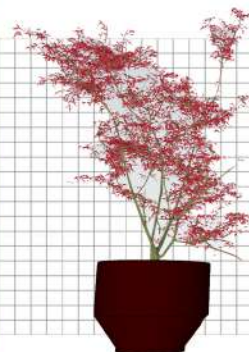
FESTIVAL TICKET



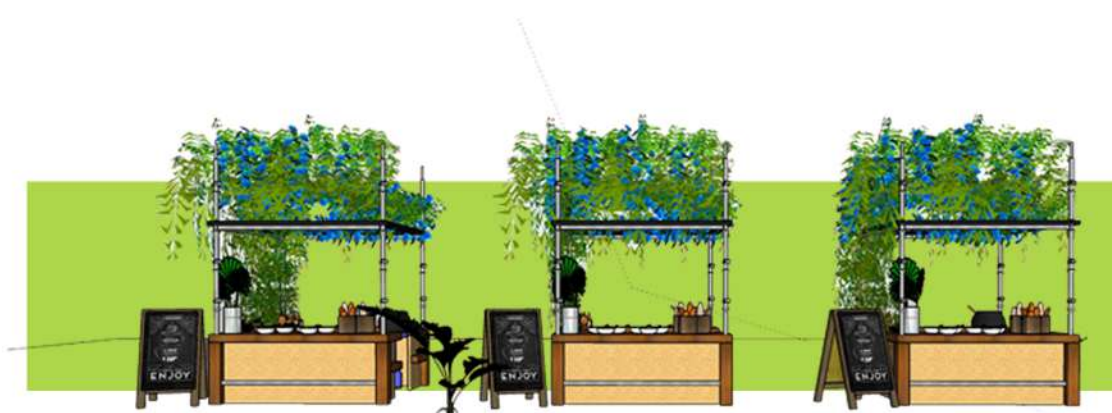
GLAMPING TENT



FURNITURE / MATERIALS:



POP UP FOOD STALL



MATERIALS:





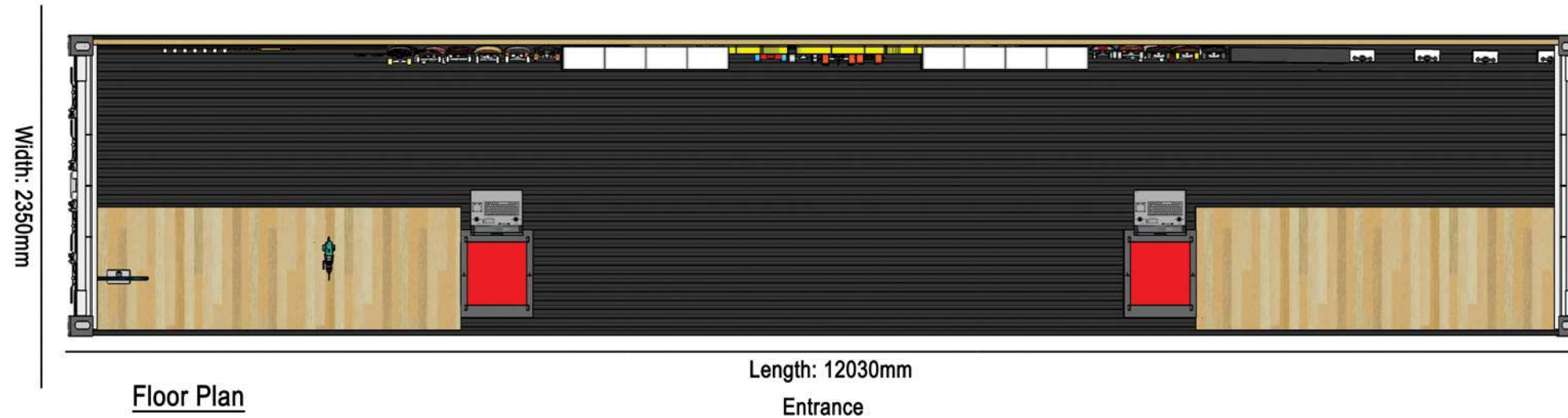
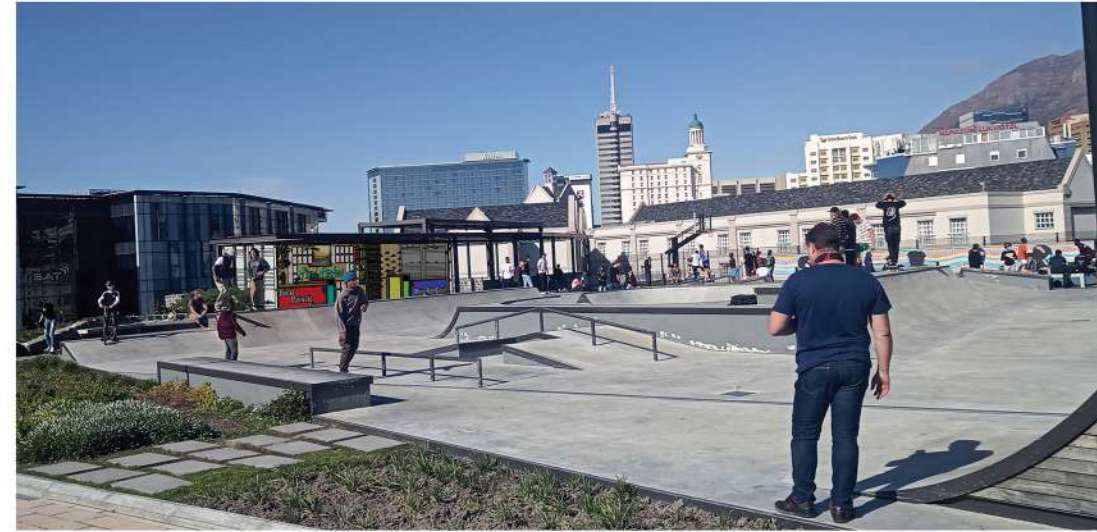
FURNITURE / MATERIALS



a sensory overload, of carefully curated magic awaits you!

RETAIL DESIGN | *Pixel Perfect*

LOCATION: Battery Park
Stanley St
Victoria & Alfred Waterfront
Cape Town
8001



RETAIL DESIGN | *Pixel Perfect*

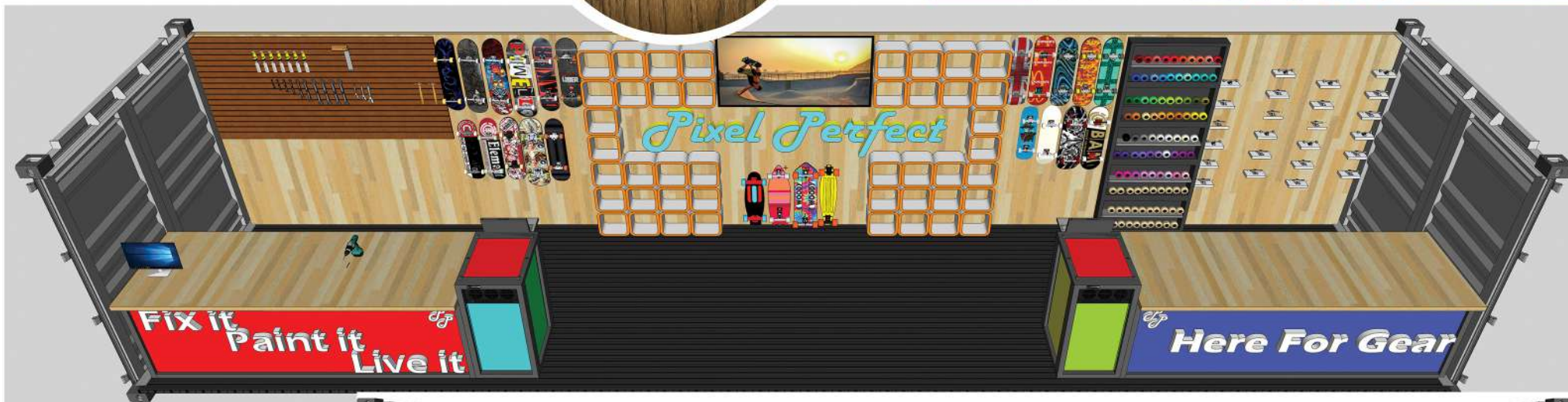


Roof Lighting

Materials:

Wall Wood: Fsc Oak
Ona living
WireBrushed
greymist

Tool Hanger: Fsc
Crudo living
Brazil brown uv Oil



THE END