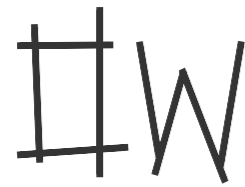


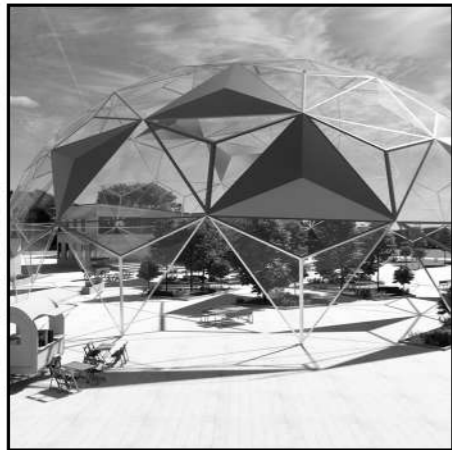
#W

OLIVIA WEIHE
DESIGN PORTOFLIO
2023





INDEX



CAERSTONE
07 - 12



PG BISON
13 - 20



HOUSE GESS
21 - 28



WESTLAKE GOLF CLUB
29 - 36



STAY UNIQUE
37 - 44



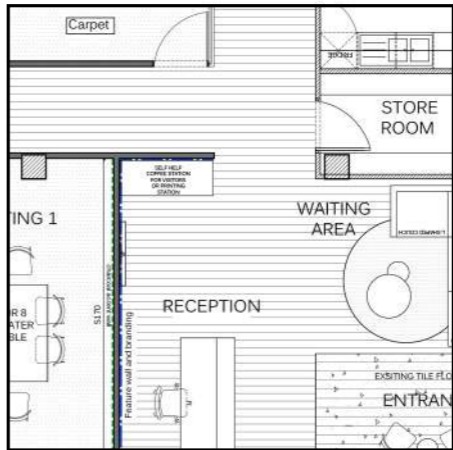
BARNET FAIR
45 - 52



BOXED
53 - 62



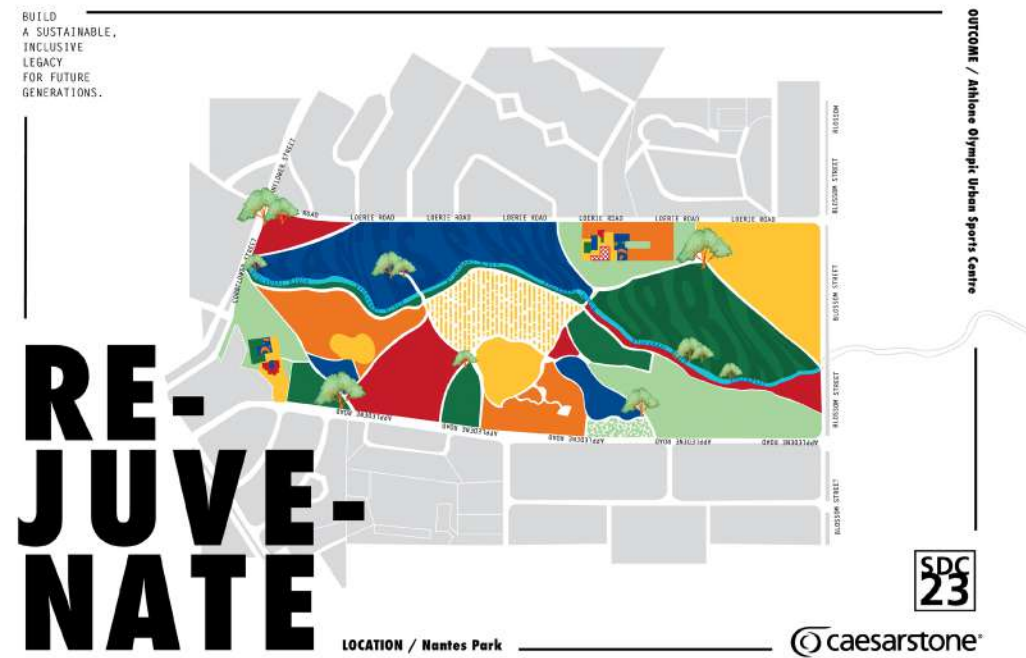
OPENROOM OFFICE
63 - 68



TECHNICALS
69 - 80



PRODUCT DESIGN
81 - 90



Guideline for Athlone Olympic Urban Sports Centre Design:

Design a vibrant, permanent Athlone Olympic Urban Sports Centre/Clubhouse within the 1,500 to 2,000 sqm range in Nantes Park, emphasizing a shared services structure. The facility must serve as a unifying, youth-centric hub, functioning as a welcoming point and the nucleus of the new urban sports park. Connect the design to imminent sports facilities and envisage its role as a focal point for the 2040 Olympic Games if Cape Town's bid succeeds. Strategically incorporate features for a seamless expansion, transforming it into a media, security, and welcome center. Leverage the area's rich sports history to attract enthusiasts and fans, ensuring the design aligns with both short-term sports goals and the long-term vision of the 2040 Olympic Games.

Concept

The Athlone Olympic Urban Sports Centre envisions three distinct buildings, seamlessly integrating multi-functional spaces. Serving as a community-focused hub, it hosts diverse social activities and events, fostering local engagement. The facility doubles as a premier sports training facility, catering to athletes and enthusiasts alike, with cutting-edge amenities. A thoughtfully designed central courtyard enhances communal interaction and recreation, creating a vibrant nucleus. Integrating restaurants and retail areas showcases local dining and shopping produce, enriching the overall experience. This dynamic concept not only aligns with the site's historical significance but also positions itself as a versatile, future-ready cornerstone for Cape Town's athletic and social landscape.

ATHLONE OLYMPIC URBAN SPORTS CENTER

- o Three distinct buildings for multi-functional use
- o Community-focused hub for social activities and events.
- o Sports trainings facility for athletes and enthusiasts.
- o Restaurants and retail area for local dining and shopping produce.
- o Central courtyard for communal interaction and recreation.

KEY DESIGN ELEMENTS





BIRDS EYE VIEW

PLAN

- 1. Reception | 2. Community Hall and Offices | 3. Gymnasium and locker rooms | 4. Outdoor Podium with storage below
- 5. Dome Structure, with community garden | 6. Local pop-up shops | 7. Public Restrooms | 8. Restaurant "RE-TREAT", local dishes on offer.



COMMUNITY HALL



RECEPTION EXTERIOR



RECEPTION

White-Fantasy Desk



WELCOME LOUNGE

Greengs, Artfaced



In response to the **DESIGN BRIEF**, envision a transformative accommodation haven at the Karoo padstall. Embrace the desert-like surroundings, emphasizing Instagramable moments for tourists and film crews. Craft entertainment zones reflecting the local environment, ensuring celebration of basic human needs - eating, sleeping, bathing, and socializing. Channel inspiration from the four elements - Fire, Water, Earth, and Air. Incorporate three water elements for a refreshing touch. Utilize PG Bison products judiciously within designs to elevate aesthetics and functionality. Strive for a harmonious blend of comfort and creativity, delivering an immersive experience that transcends the ordinary.

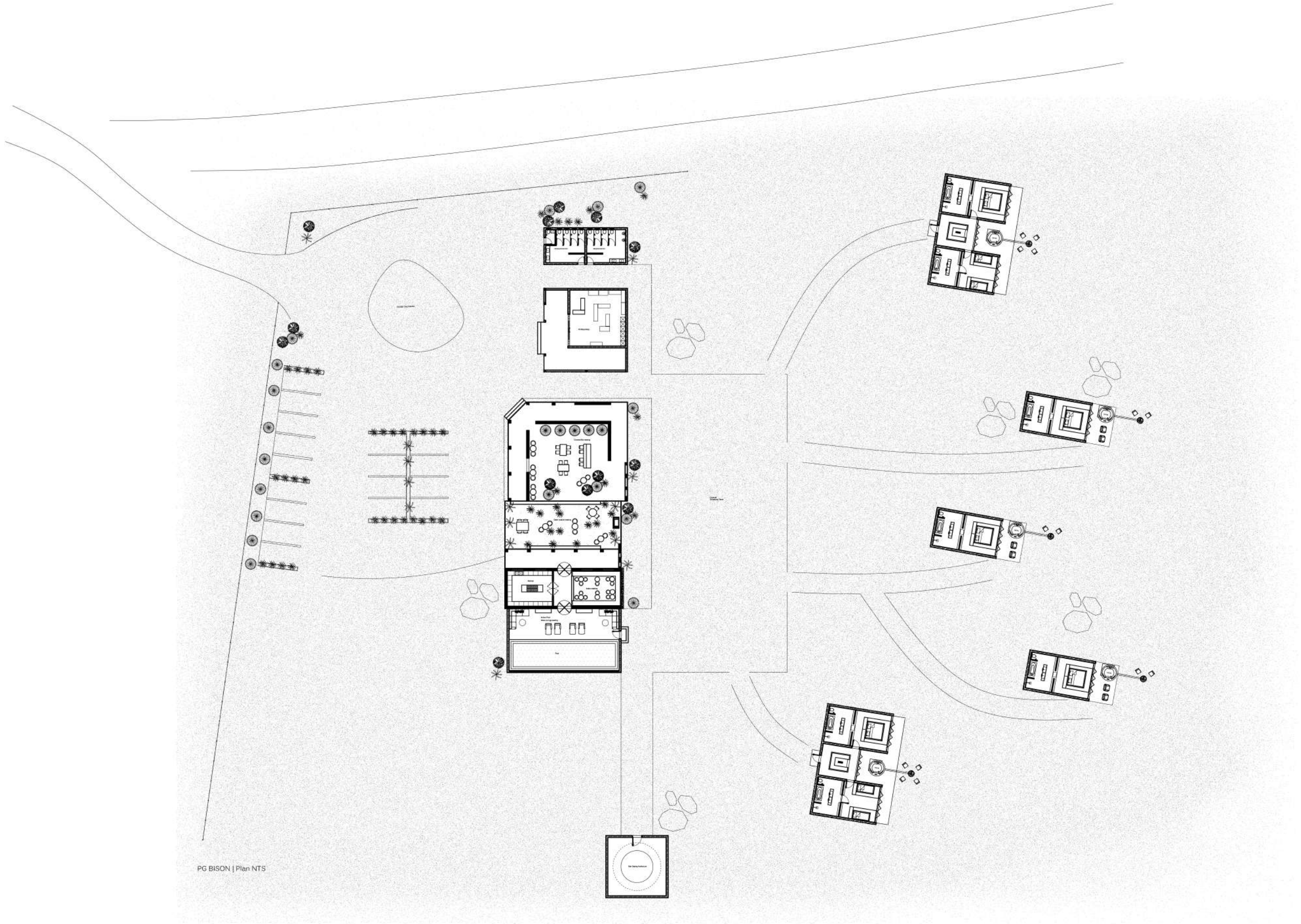


DESERT EMBRACE



In the heart of the Karoo, South Africa, a once-abandoned building and site have been transformed into a captivating oasis amidst the desert expanse. The old structure, redesigned to emulate the allure of ancient ruins, now teems with lush greenery, offering an inviting haven to weary travelers. Surrounding this enchanting centerpiece are modern edifices that house a restaurant, indoor swimming pool, pit stop shop, and public bathrooms, providing essential amenities for visitors. Accommodation pods, thoughtfully placed in the distant desert, beckon guests to immerse themselves fully in nature's embrace, basking in the raw beauty of the desert landscape. This harmonious integration of old and new creates a unique escape where guests can reconnect with the elemental allure of the desert. Three water elements, seamlessly woven into the design, manifest as reflecting pools, a waterfall wall, and private plunge pools, enhancing the overall sensory experience and providing picturesque backdrops for memorable Instagramable moments. The strategic use of PG Bison products amplifies the aesthetic appeal, ensuring both functionality and sustainability in this innovative desert haven.





PG BISON | Plan NTS





EXTERIOR WATER FEATURE:

An enchanting water stream has been carved into the preexisting structure, to enhancing the oasis ambience of the newly constructed outdoor courtyard.

PG BISON MELAWOOD PRODUCT
Supermatt | Congo



PG BISON MELAWOOD PRODUCT
Supermatt | Caldera



The accommodation pods offer a delightful addition—an outdoor hot tub heated by an innovative water circulation system. This system efficiently draws the cooled water layer from the tub's surface, passing it through metal pipes that are cleverly wrapped around an outdoor fireplace. The warmth from the fireplace causes the water to react, pushing it back into the hot tub, maintaining an ideal temperature for guests' enjoyment. Under the night sky, guests can indulge in this luxurious experience, where the serene setting and soothing waters create a perfect retreat. It's a harmonious blend of modern comfort and natural ambiance, designed to provide a memorable escape.

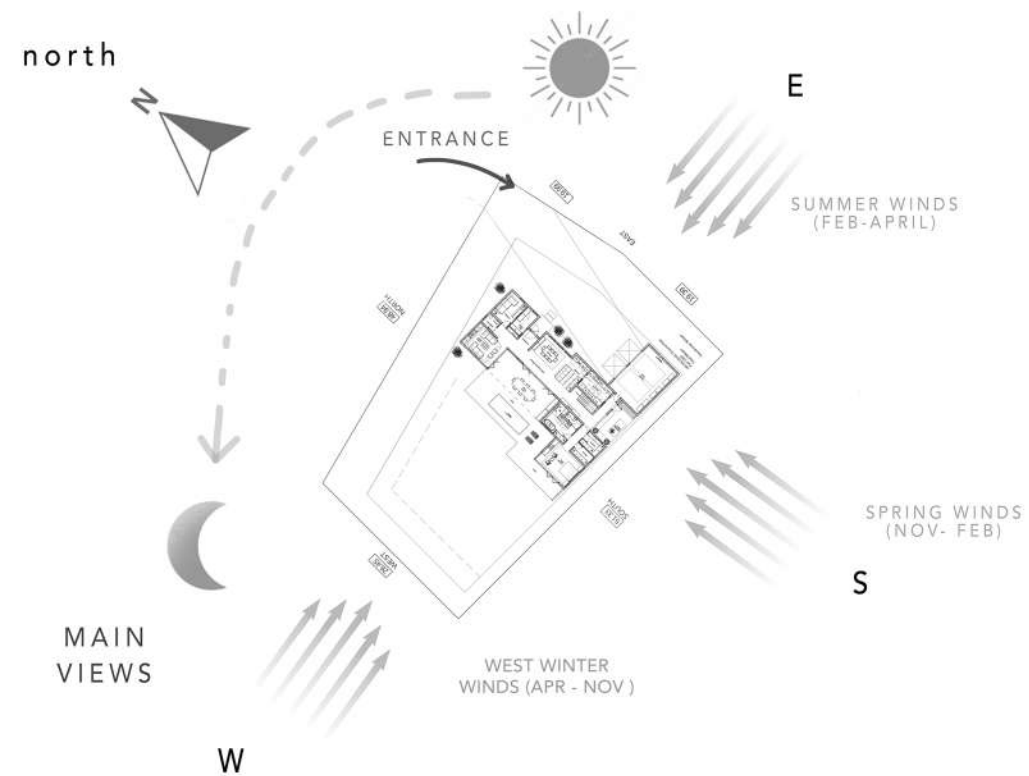
PG BISON MELAWOOD PRODUCT
Supermatt | Tunari



WATER FEATURE IN SUITE; A room divider draws inspiration from a brilliant Indian no-power air-conditioning design, using the power of evaporation to naturally control room temperature. Immerse yourself in a refreshing ambiance, as the gentle flow of water cools the air, ensuring your utmost comfort throughout your stay. Experience eco-consciousness and elegance harmoniously intertwined in a truly unique retreat."



House Gess, located at 19 Fernwood Drive in Fernwood Private Estate, Knysna, is tailored for Keith (60) and Kim (57)—a couple crafting their retirement abode. The property, featuring a gradual 12-meter slope, allows flexibility for a single or double-story construction. Maximizing the stunning northwest-facing lagoon view, the house strategically positions itself, ensuring unobstructed panoramas. Key specifications include an open-plan layout for the kitchen, dining, and living areas, leading seamlessly to a patio with stacker doors for optimal enjoyment of the lagoon views. The master suite emphasizes luxury with stacker doors, a balcony, and the option for dual dressing rooms or a generously sized master bathroom. Other essentials encompass two en suite double bedrooms, a guest suite with independent access, outdoor living space with a built-in braai and a compact swimming pool, a double garage with storage, and a spacious driveway designed for easy maneuvering.



HOUSE GESS

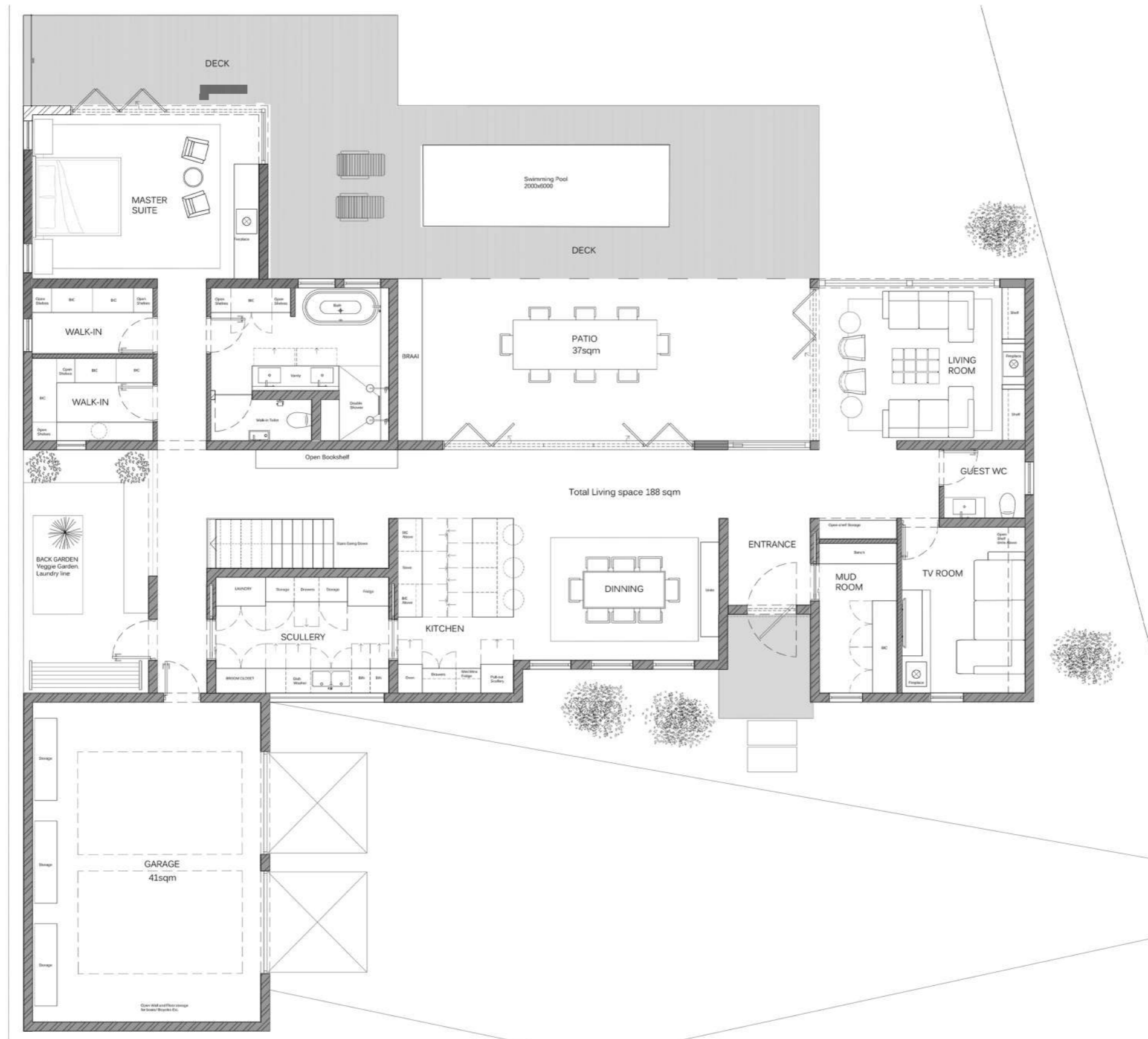
A project deeply rooted in the aspirations of Kim and Keith, a couple on the brink of retirement. Their vision was a spacious, practical home that seamlessly embraced the tranquil lagoon side setting, a place where they could enjoy the serenity of their surroundings. The design palette, featuring off-whites and shades of green inspired by the fynbos landscape, merges classic and contemporary aesthetics. Timber floors offer warmth, and subtle black accents add sophistication. With elegant details like skirting, door frames, and cornices, HOUSE GESS epitomizes comfortable luxury, a haven for the couple to savor their retirement years in style and serenity, overlooking the picturesque Lagoon.



View of House



Front Door



House Gess | Ground Floor
 Plan NTS
 Total : 266 sqm



Overall Lagoon View



Living Room



Dining Room





Back Garden



Patio



Pool



WESTLAKE GOLF CLUB

Guidelines for the Hospitality Design Competition | 2022 Exam Project

Introduction:

Welcome to the Hospitality Design Competition for the 2022 Exam Project, centered around the redesign of the Westlake Golf Clubhouse located on Westlake Ave, Lakeside, Cape Town. The esteemed clients for this project are the Tintswalo Group, renowned architect Neal Sachs of Zuckerman Sachs Architects, and the Westlake Golf Club itself. Tintswalo, in collaboration with Zuckerman Sachs, has granted you the opportunity to infuse your creative vision into the interior spaces of the new Westlake Golf Clubhouse.

Design Focus:

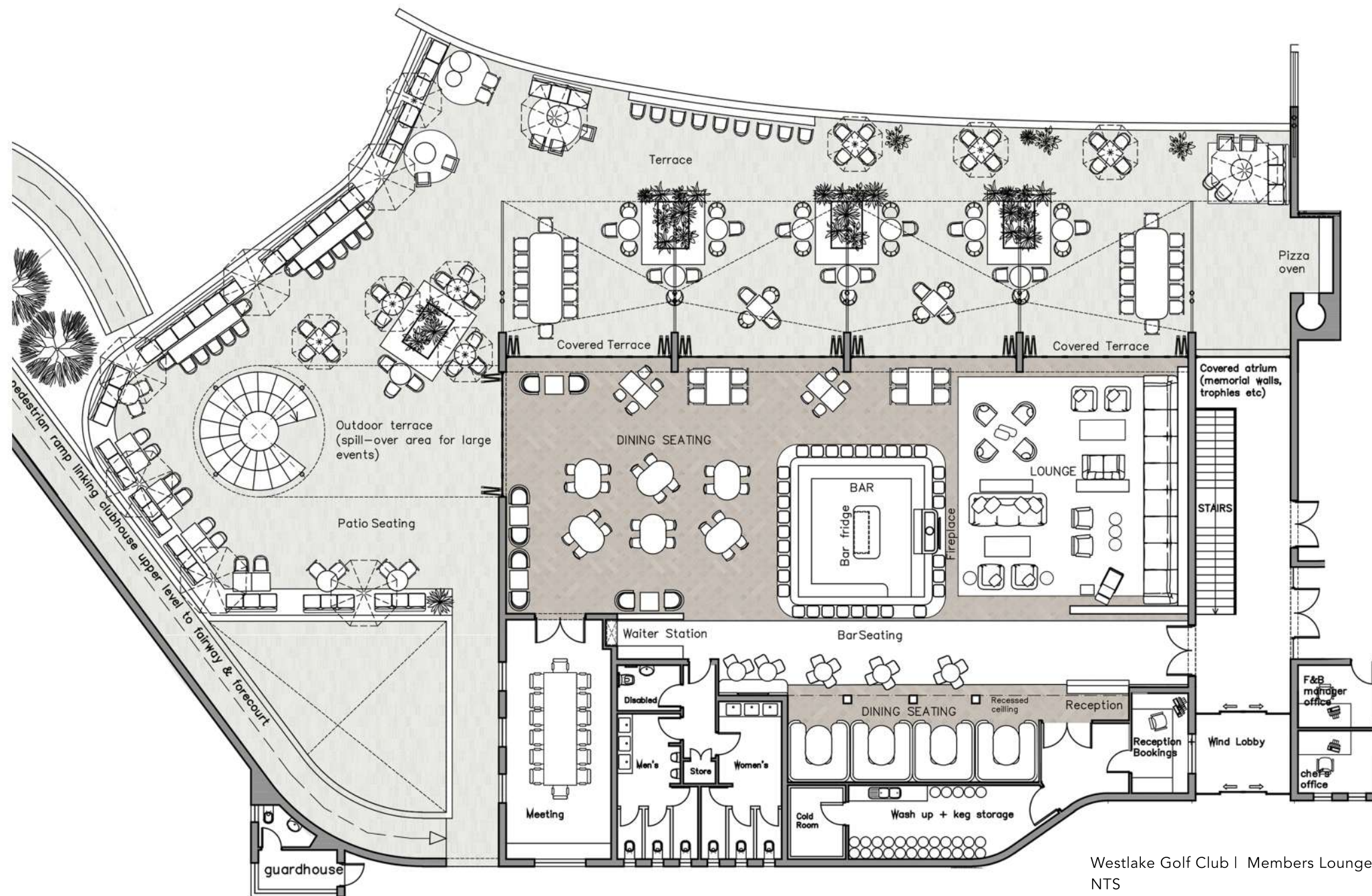
Your task involves conceptualizing and curating the interior design of specific areas within the clubhouse. The ground floor demands attention to the halfway house and locker rooms for both genders, while the first floor includes spaces like the members' bar, slow lounge, dining area, and an expansive outdoor patio seating. Design considerations encompass floors, walls, and ceiling treatments, material specifications, furniture selection, fireplace design, lighting schemes, accessory choices, and sanitary ware fixtures. Keep in mind the high-end aesthetic desired by the clients, but also consider practicality and local sourcing within the specified budget. The Westlake Golf Club emphasizes a traditional yet fresh ambiance with natural materials and a touch of elegance, emphasizing the need for a timeless architectural aesthetic that balances innovation with practicality. Your design should withstand the test of time while being functional and inviting to create a sense of 'home' for all who enter.

Concept Response:

My concept seamlessly merges modern and vintage classic styles, harmonizing up-to-date materials with sophisticated, traditional furnishings. This blend creates a timeless and inviting ambiance, embodying the Westlake Golf Club's desire for fresh thinking within a traditional setting.



Members Club | Bar and restaurant



Westlake Golf Club | Members Lounge
NTS





Interior Seating



Exterior Seating



Members Club | Lounge

DESIGN TIME

INTERIOR DESIGN PROJECT

WESTLAKE CLUB HOUSE

2ND PLACE

R10 000 AWARDED TO

Olivia Weihe





STAY UNIQUE

LUXURY IS THE LOCATION

Brief Guideline:

Stay Unique invites creative minds to shape innovative cabin designs, targeting the construction of six cabins near Cape Town in 2023 and future expansion in 2024. The selected designs offer a unique opportunity for implementation, providing participants with firsthand experience of the finished cabins. Stay Unique, through its distinctive partnership model, gains access to prime locations, deploying up to three cabins per site for operational efficiency. Designs should elevate Stay Unique in the eco-accommodation sector, emphasizing a timeless, premium aesthetic inspired by natural surroundings. Steering clear of gimmicks, the focus lies on practical yet inventive features for an Instagrammable and memorable customer experience within budget constraints. These unique designs play a pivotal role in defining Stay Unique's brand identity, enhancing the allure of each location and serving as a significant drawcard for the brand.

In Response:

Nestled in the scenic Cederberg on Wild Olive, Edenveldt Farm, our project unveils five thoughtfully arranged pods for an immersive experience in the natural surroundings. Guests can revel in seclusion amidst majestic rock mountains and delicate fynbos. The cabin seamlessly blends into nature with a light steel frame and dark timber cladding, while the warm Scandinavian interior, featuring simple built-in finishes and lighter birch timber cladding, offers a cozy and luxurious contrast. This deliberate combination crafts a uniquely picturesque and unforgettable holiday getaway, aligning perfectly with Stay Unique's vision.

DISCONNECTING TO RECONNECT



Wild Olive, Edenveldt Farm, Cederbergs



Cabin front exterior



STAY UNIQUE
Floor plan
1:50



Tailored Headboard Design:

Serving as a stylish bed backdrop, this headboard doubles as a room divider, seamlessly separating the kitchen and sleeping space.



Bonbon 2 Rechargeable,
Portable table
Lighting



Osaka Round Table,
Pedersen Lennard



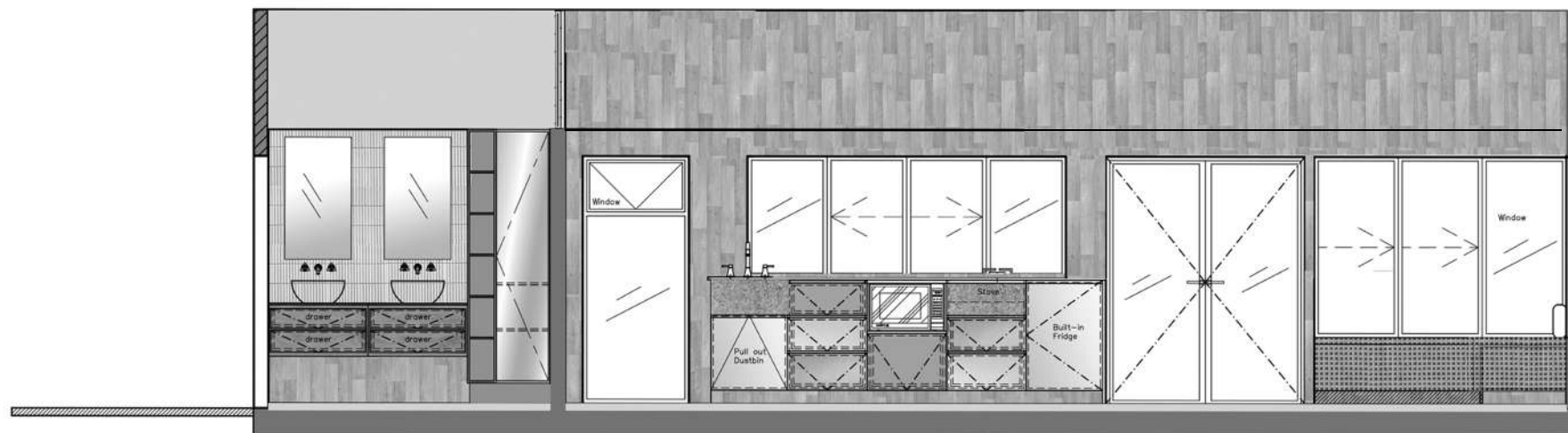
Kubu lighting range
Weylandts



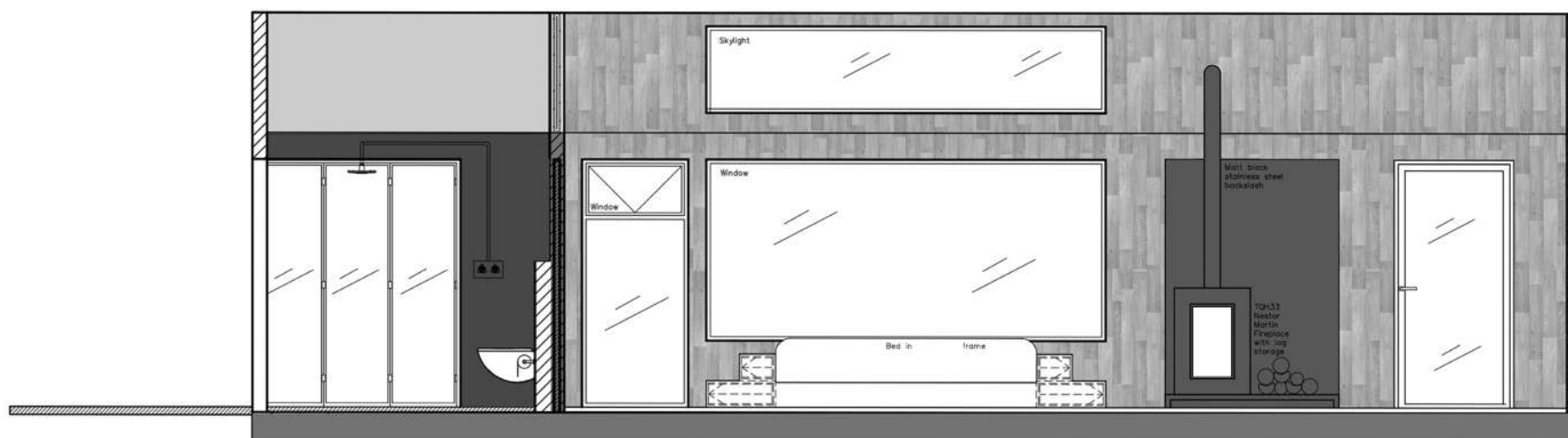
Kitchen-net & sleeping



Dinning & fireplace



STAY UNIQUE
Elevation A
1:50



STAY UNIQUE
Elevation B
1:50



Italtile
Franke Sirius Carbon Black sink
Tivoli Vincenza Sink mixer



SMEG kettle



Gas burner
Domino Built in Hob



Meir round shower head
and mixer



SIBO wall hung toilet
Geberit dual flush
Bathroom Butler holder



Meir mounted basin spout
Villeroy and Bosch top basin



Bathroom



Vanity & storage



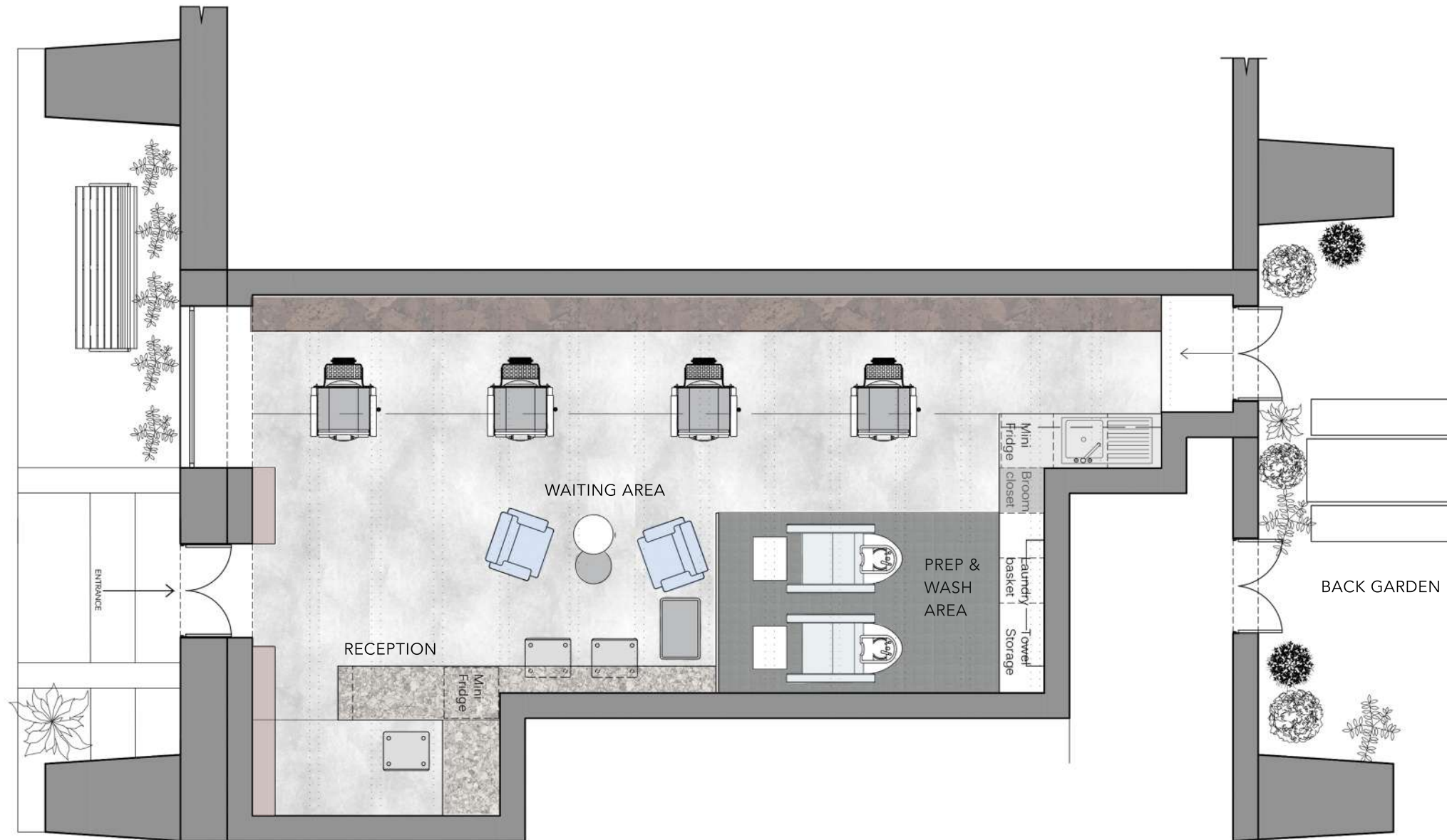
**BARNET FAIR
BARBER SHOP**

The objective of this client brief is to redesign and elevate the interior space of Barnet Fair Barbershop, recently acquired by Aruzagraph (Pty) Ltd. Shifting from a mid-tier to mid-upper tier positioning, the design should be contemporary, edgy, and clean, incorporating natural elements like wood and stone. The focus is on a high-quality practical service offering, with a maximum of 5 barber stations, a small kitchen, retail shelving, and creative lighting. The design must be unique in Cape Town, sparking natural conversations. Restrictions include no physical alterations to the building, plumbing modifications, or external attachments. Optional features like exterior plants and seating are welcomed.

Nestled on Bree Street in Cape Town, the rejuvenated Barnet Fair Barbershop, formerly an aged gentlemen's haven, now exudes a hip and modern vibe. With a clean layout, eclectic materials, and soft white lighting, the redesign delivers a fresh and lasting aesthetic. The revamped space includes four barber stations, a welcoming front-of-house, a coffee/drinks station, a comfortable waiting area, a prep & wash station, a kitchenette, and outdoor seating. This transformation perfectly embodies the contemporary and edgy vision outlined in the client brief, creating an inviting and vibrant space in the heart of the city.



Barber Stations



Barnet Fair | Floorplan
NTS



Front of house
Storage





Reception



Front of house | Waiting area

Staff Kitchennet



Prep Station





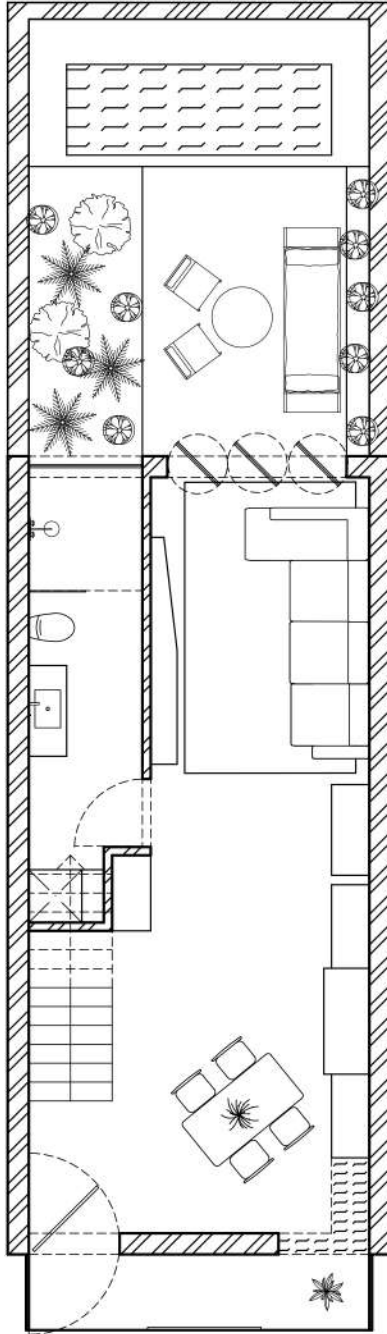
Prep & wash area



BOXED

Design a compact living space in Cape Town City Bowl, choosing from various locations like Bo Kaap, Gardens, or V&A Waterfront. The property, with an elongated shape, requires an entrance at the shorter end facing the street. You can position the building between two existing structures or demolish one for your design. The internal dimensions are 4500 mm x 11000 mm, spanning a ground floor, first floor, second floor, and rooftop garden. Connec-

front, and an option for a small courtyard at the back. Design flexibility is allowed, focusing primarily on the interior. Key elements include innovative planning for compact living, thoughtful use of space under staircases, incorporation of essential areas (kitchen, bedroom, bathroom), and attention to materials and natural light. Your design must showcase at least one iconic international furniture piece, and the rooftop should serve a purpose. Ensure alignment with the provided proportions and CAD drawings, unleashing creativity within the specified parameters.



GROUND FLOOR

Scale 1:100



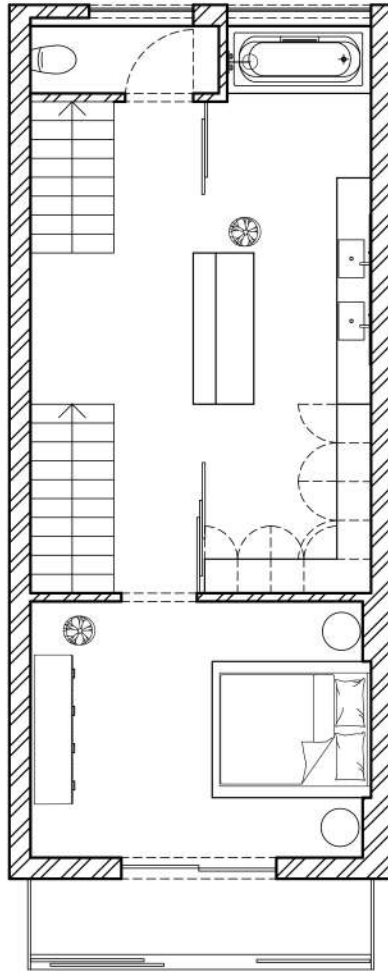
GUEST WC



FIRST IMPRESSION



BACK GARDEN



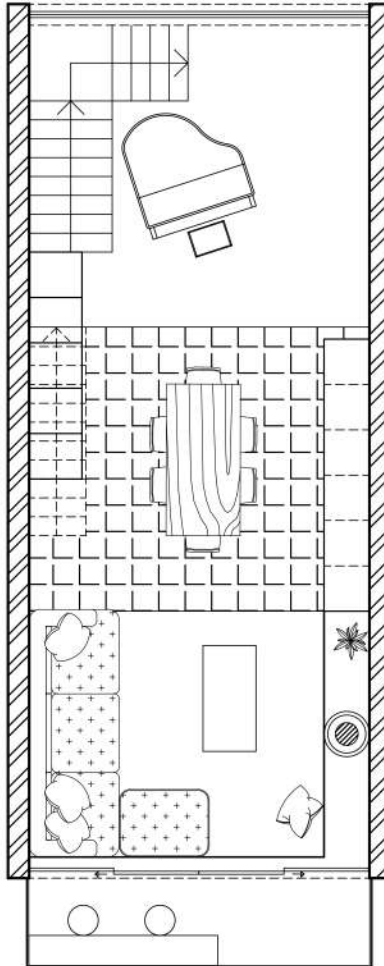
FIRST FLOOR

Scale 1:100



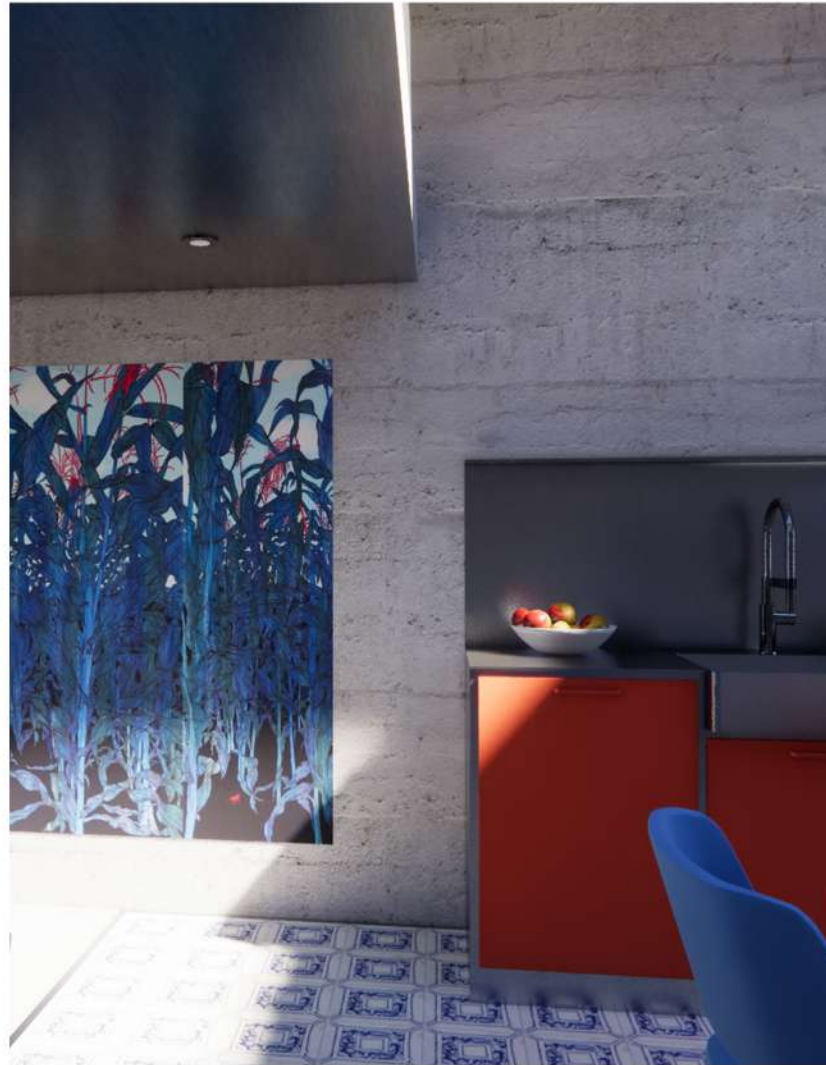
MASTER SUITE

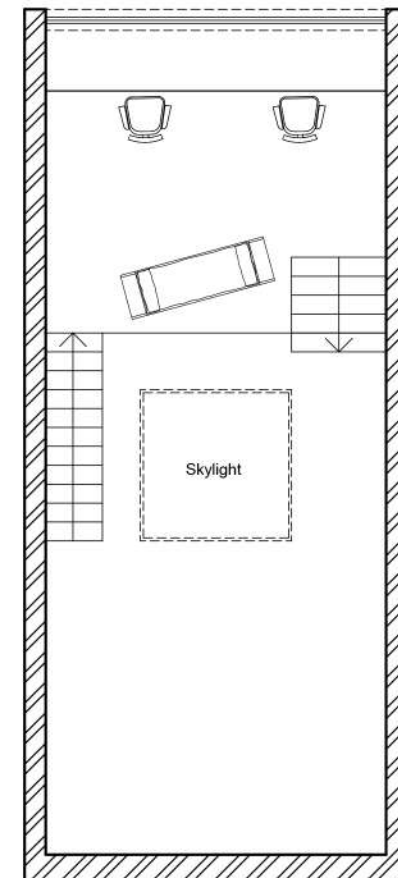




SECOND FLOOR

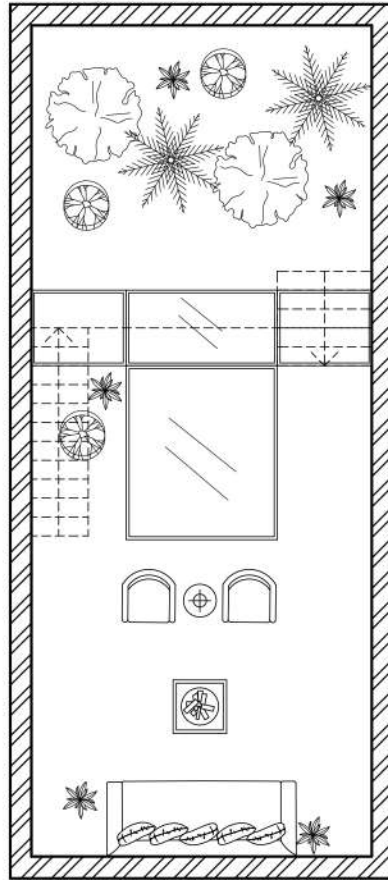
Scale 1:100





MEZZANINE
Scale 1:100





ROOF PLAN
Scale 1:100



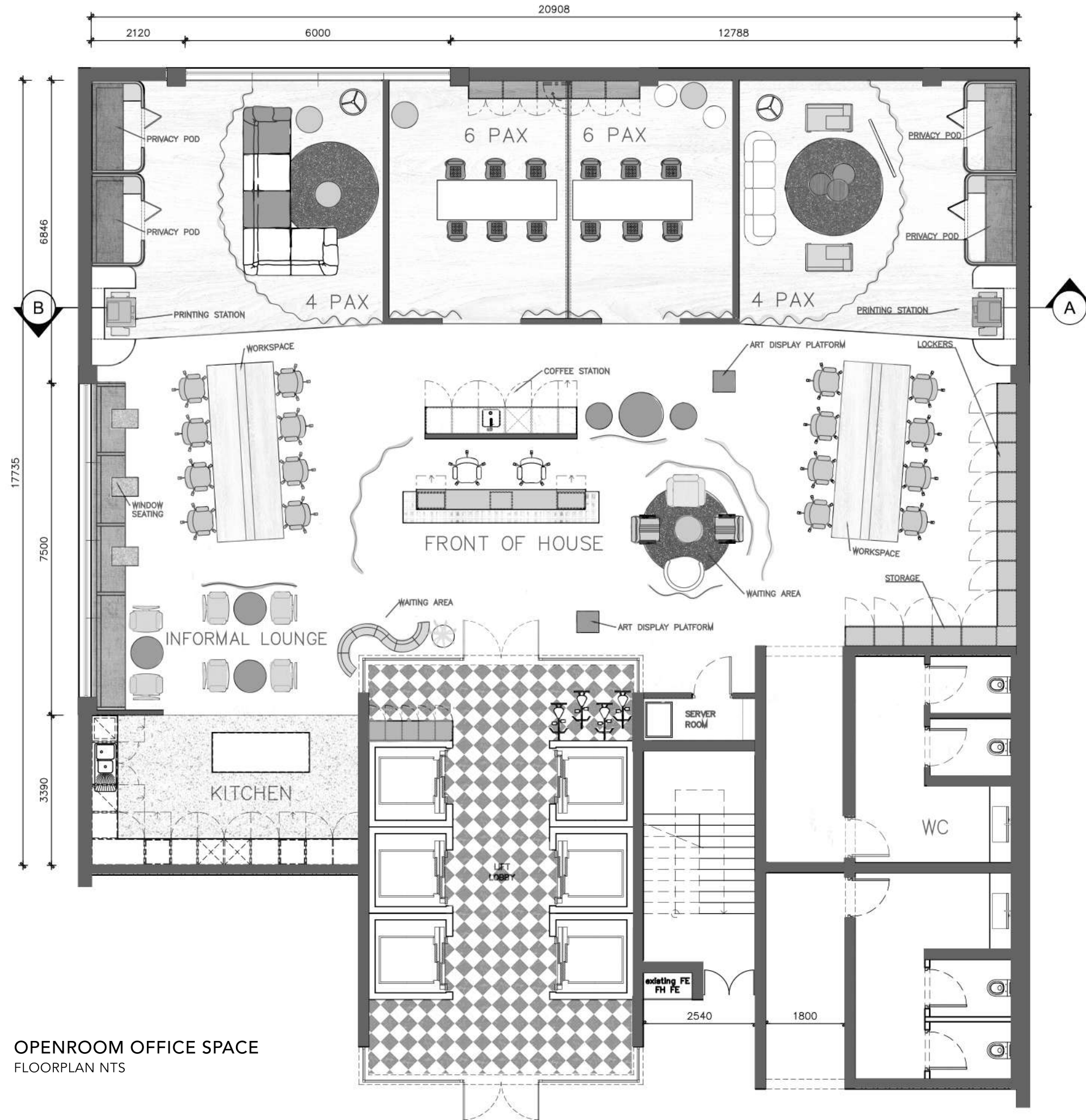
CRAFT AN OFFICE SPACE for openroom in Cape Town CBD that reflects a vibrant, collaborative, and playful atmosphere, aligning with post-pandemic trends in office design. Embrace flexibility by moving beyond traditional open-plan layouts and introducing versatile workspaces, accommodating various needs like co-working, collaboration, and private pods.

Consider the provided 10th story floor plan, preserving existing windows and openings while integrating bulkheads for lowered ceilings, lighting, and enhanced acoustic insulation. Maintain the specified finishes (polished concrete floors, white plastered and painted walls, exposed AC ducting with suspended track lighting) and incorporate decorative details and art for added visual interest.

OPENROOM | OFFICE DESIGN

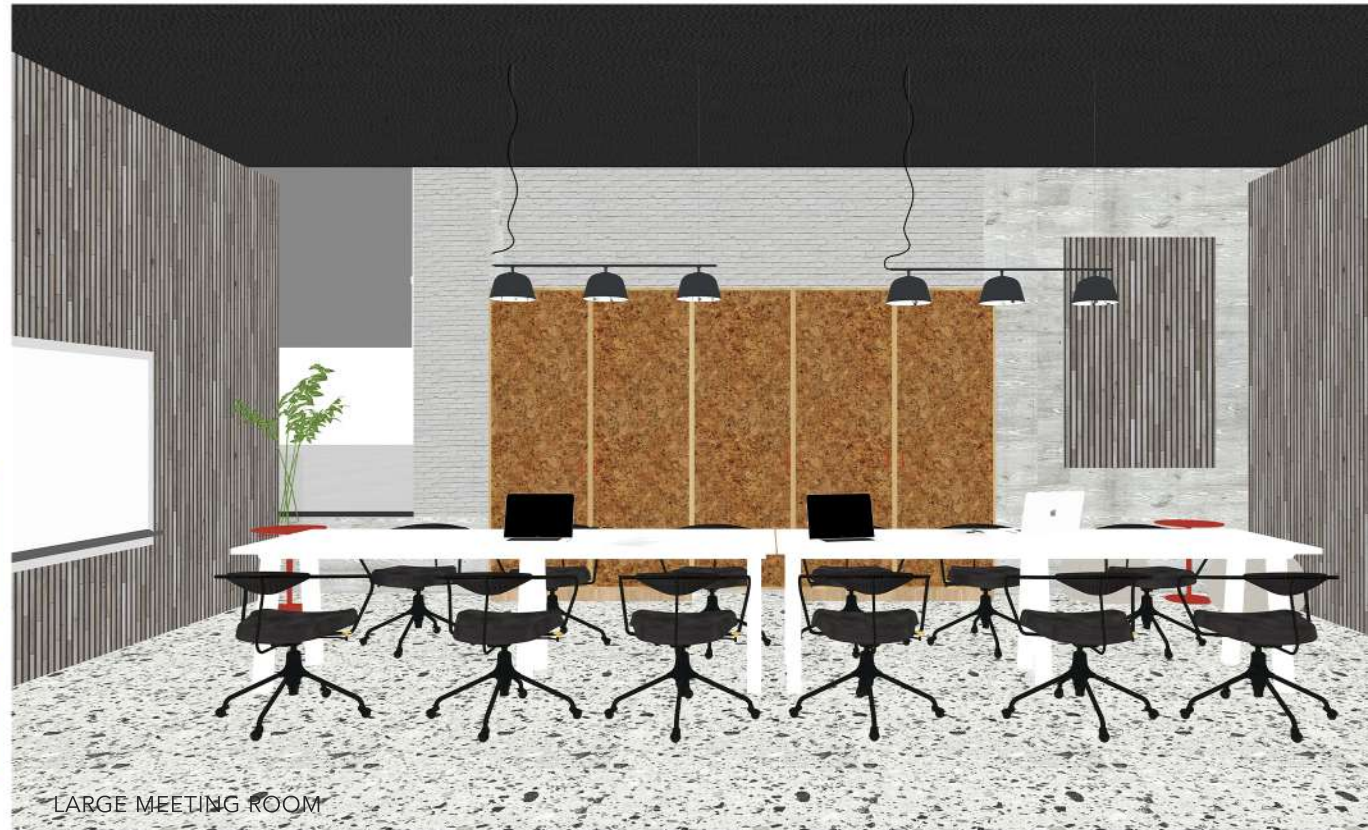
Openroom Design is a haven for artists, designers, and creatives, fostering an environment of collaboration and inspiration. The design concept revolves around flexibility, allowing designers to freely come and go. On weekdays, it transforms into a clean and calming workspace, providing the ideal backdrop for focused creativity. Come the weekend, the atmosphere shifts to a vibrant, hip, and colorful exhibition space, showcasing the dynamic energy of the creative community. This dual-purpose design encapsulates the essence of openroom—a space that not only adapts to the work needs of its occupants but also celebrates the diversity and artistic flair of its members. The transition from work to exhibition seamlessly captures the spirit of a community where innovation, creativity, and expression thrive.





OPENROOM OFFICE SPACE
FLOORPLAN NTS





TECHNICAL DRAWINGS

HOUSE GESS I | KITCHEN DETAIL

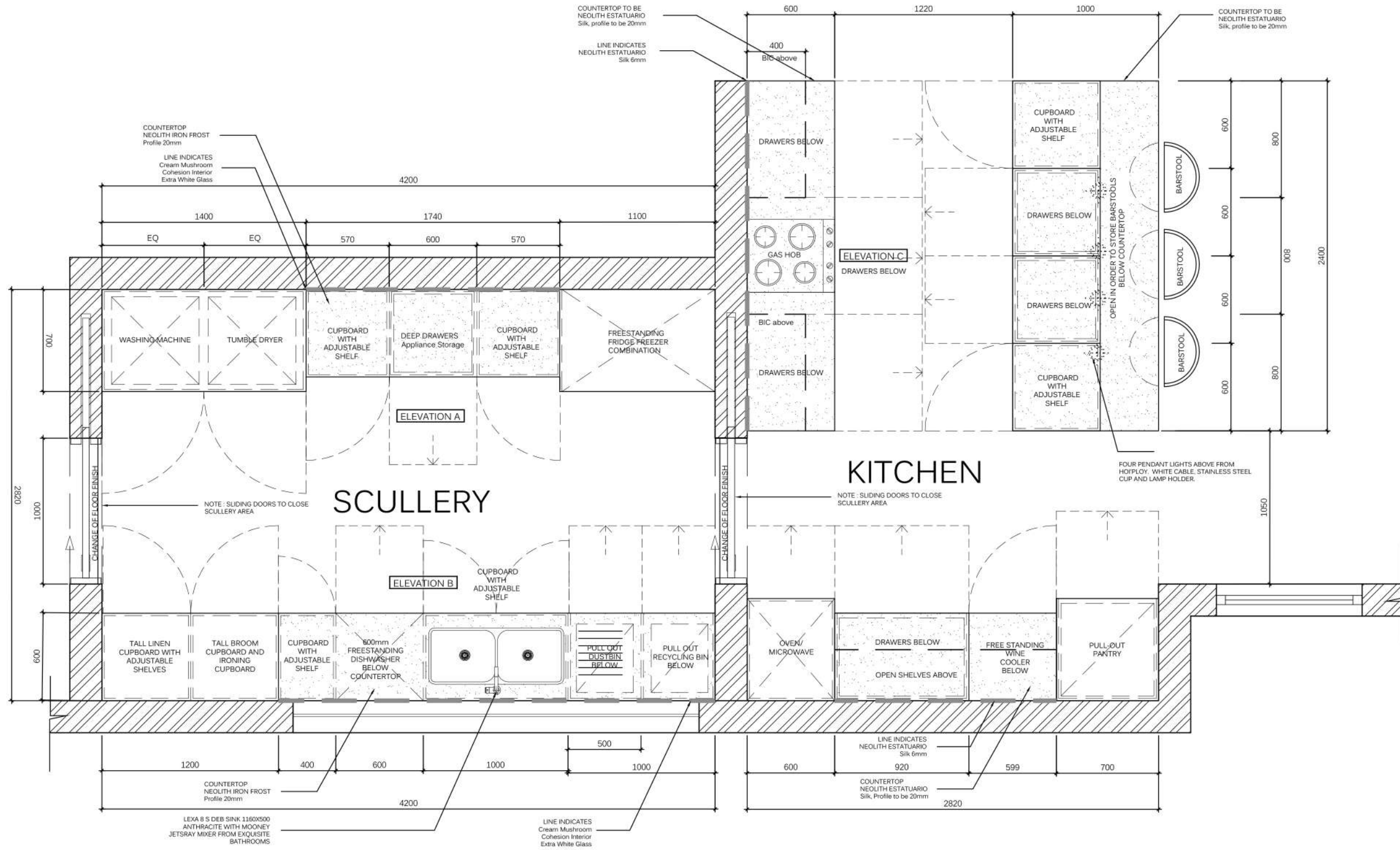
72 - 73

WORKING DRAWINGS

75 - 79

ON Q APARTMENT 602 | EN SUITE DETAIL

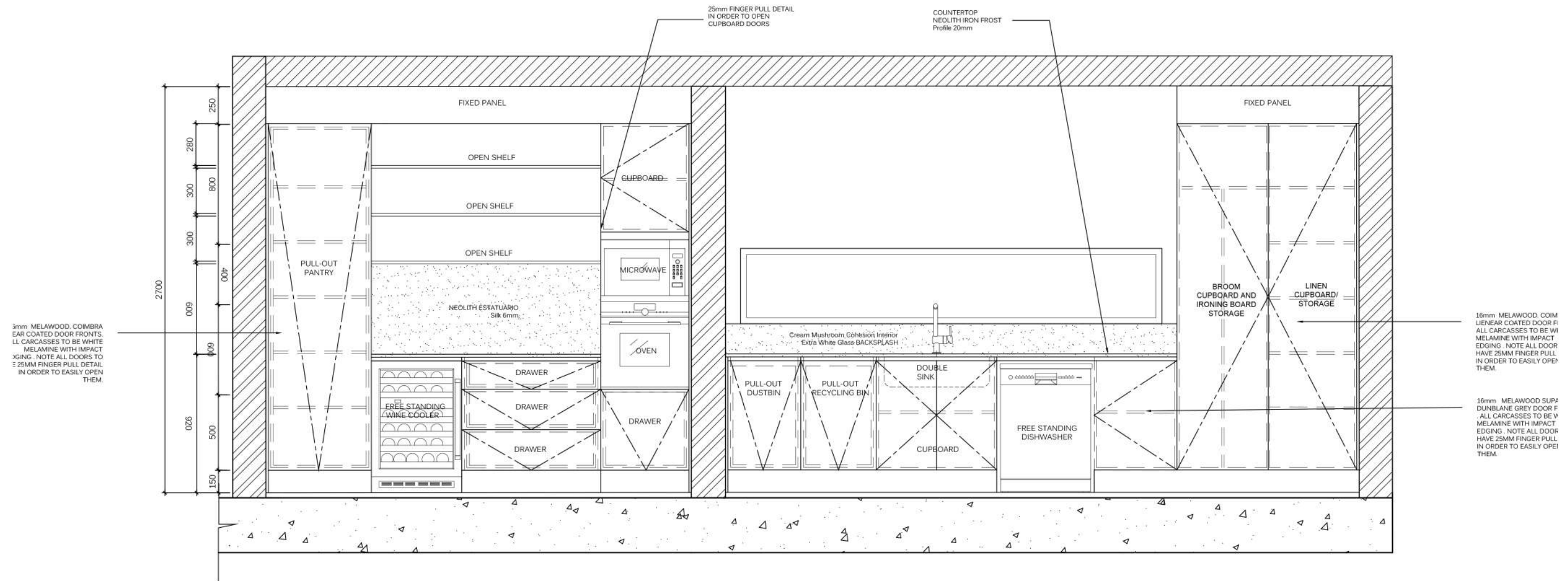
81



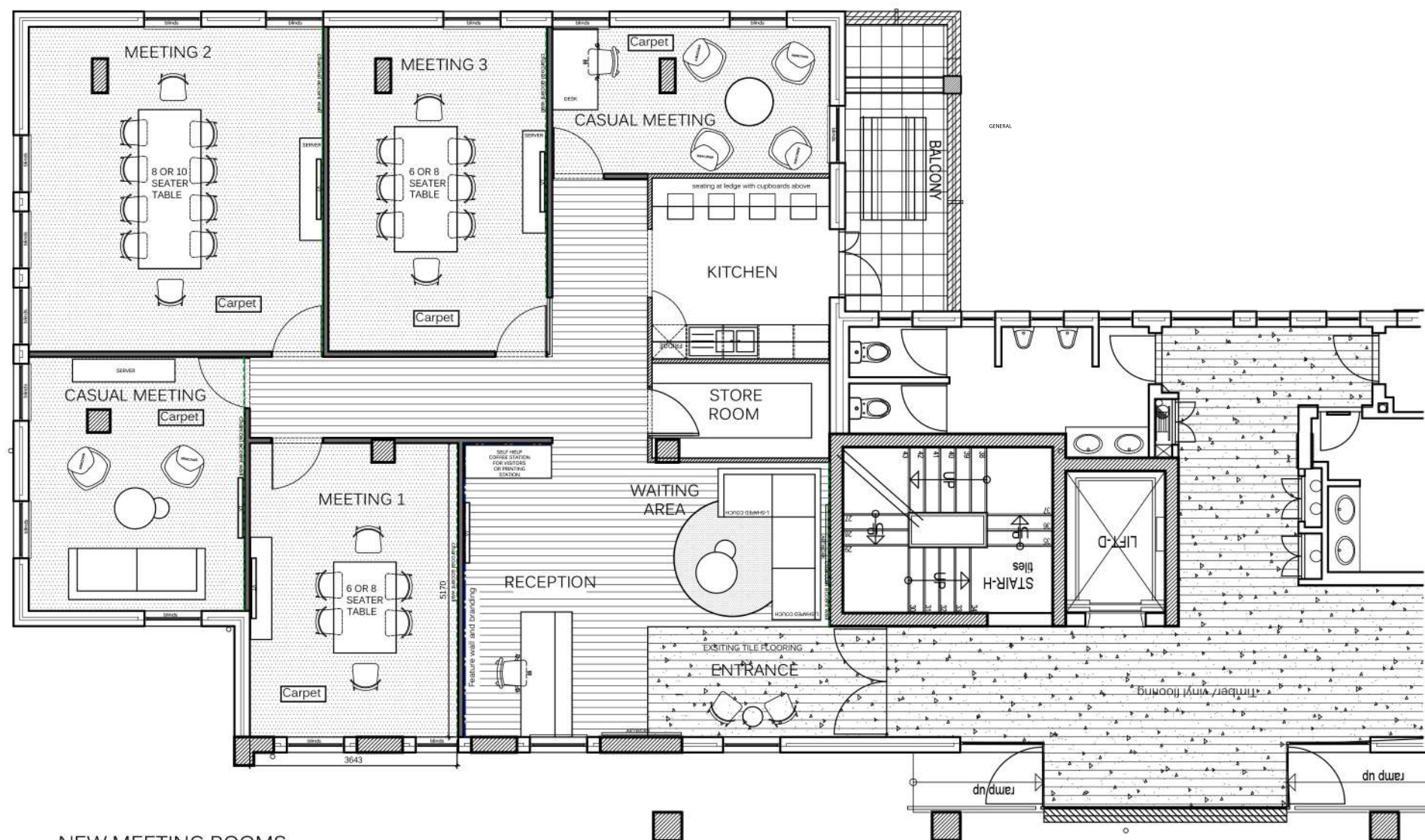
HOUSE GESS KITCHEN, SCULLERY PLAN
SCALE 1:25

NOTE: ALL MEASUREMENTS TO BE CHECKED ON SITE PRIOR TO MANUFACTURING

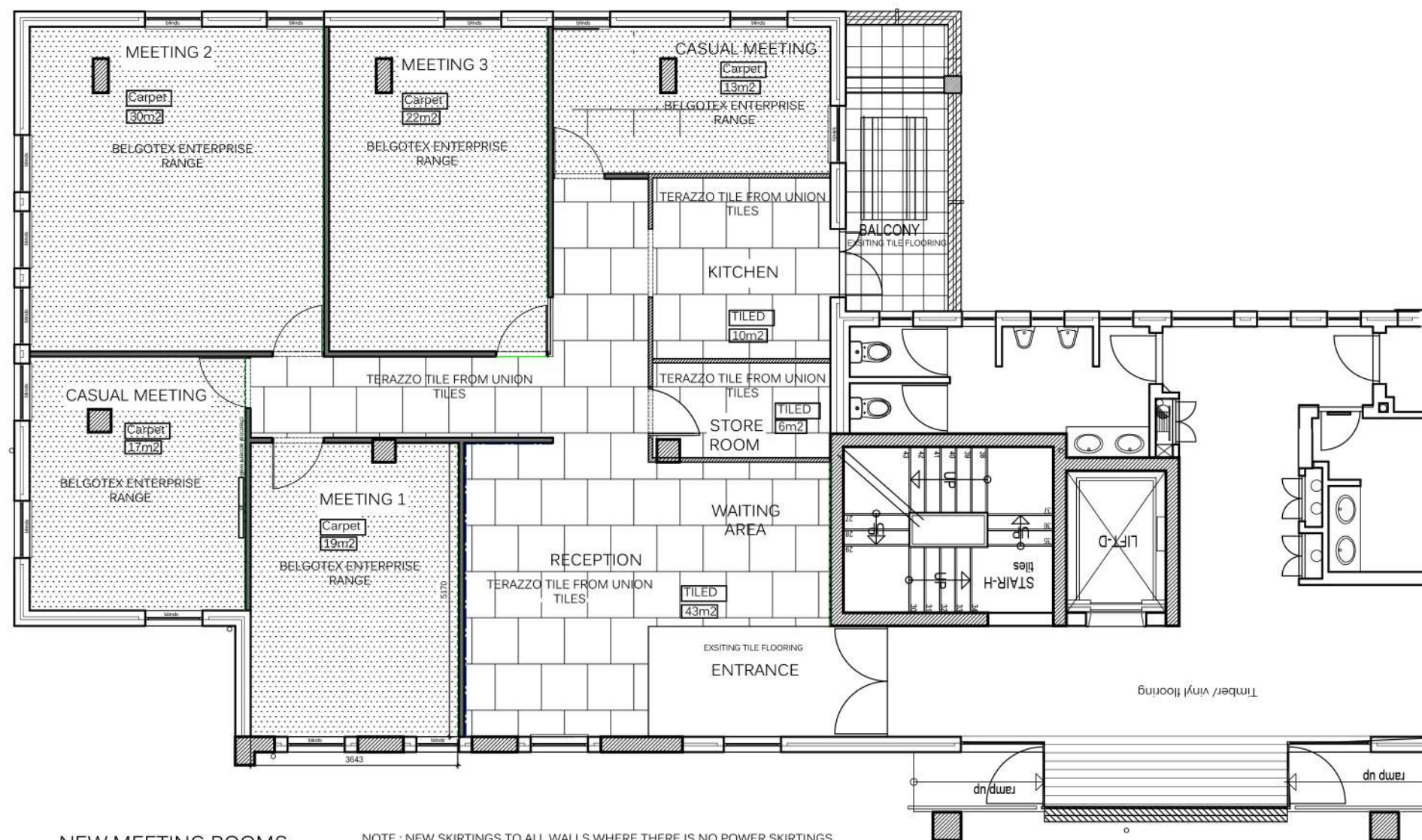
NOTE: THIS DOOR TBC ON SITE WITH CLIENT



HOUSE GESS KITCHEN ELEVATION B
NTS



NEW MEETING ROOMS
OPTION 2
GENERAL LAYOUT PLAN
SCALE 1:50



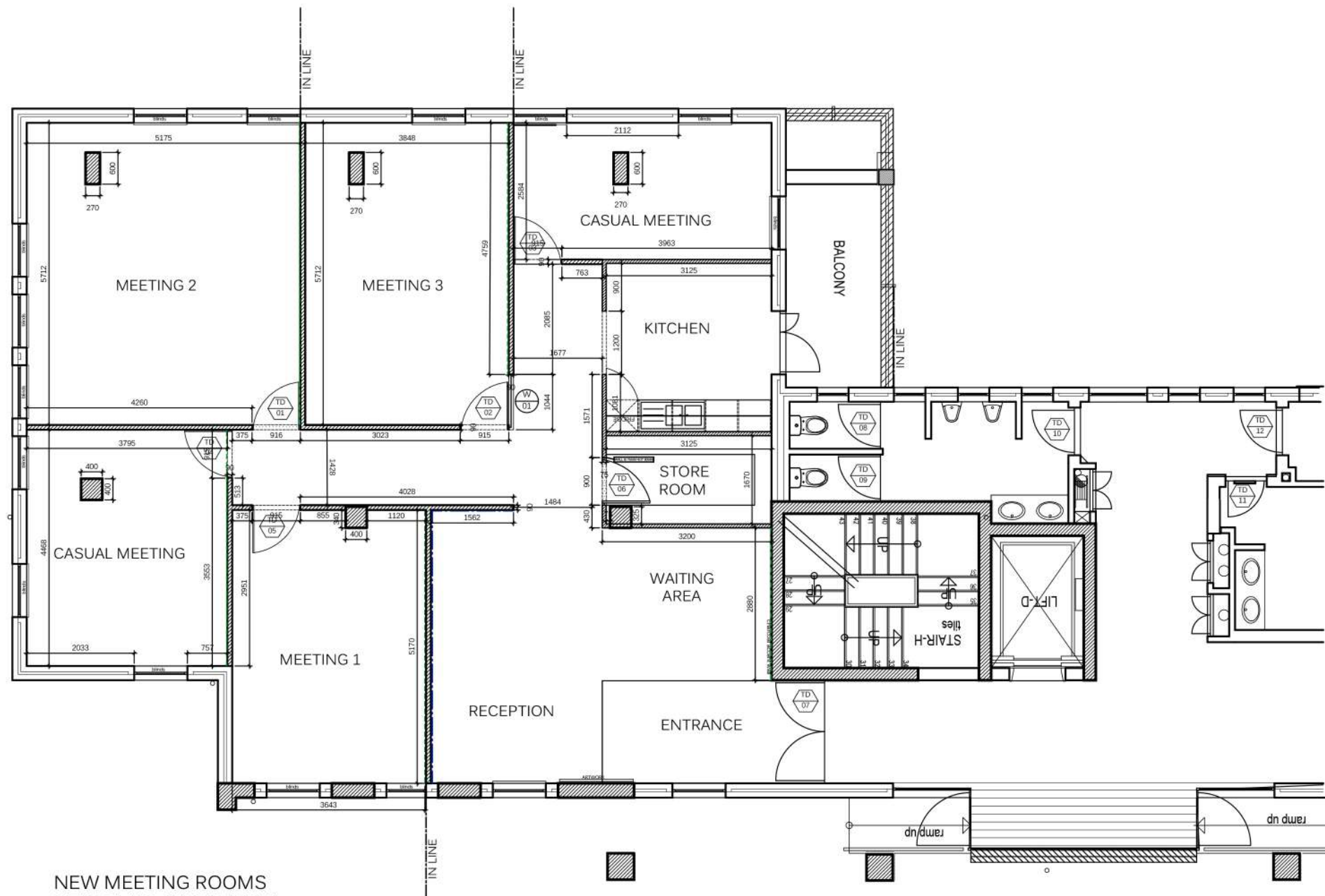
NEW MEETING ROOMS
FLOOR FINISH PLAN
SCALE 1:50

NOTE : NEW SKIRTINGS TO ALL WALLS WHERE THERE IS NO POWER SKIRTINGS.
STAINLESS STEEL EDGE TRIMS BETWEEN FLOOR FINISHES WHERE REQUIRED .

BELGOTEX MOD DESIGN
ENTERPRISE CARPET TILE.
COLOURS TBC
Total: 101m²

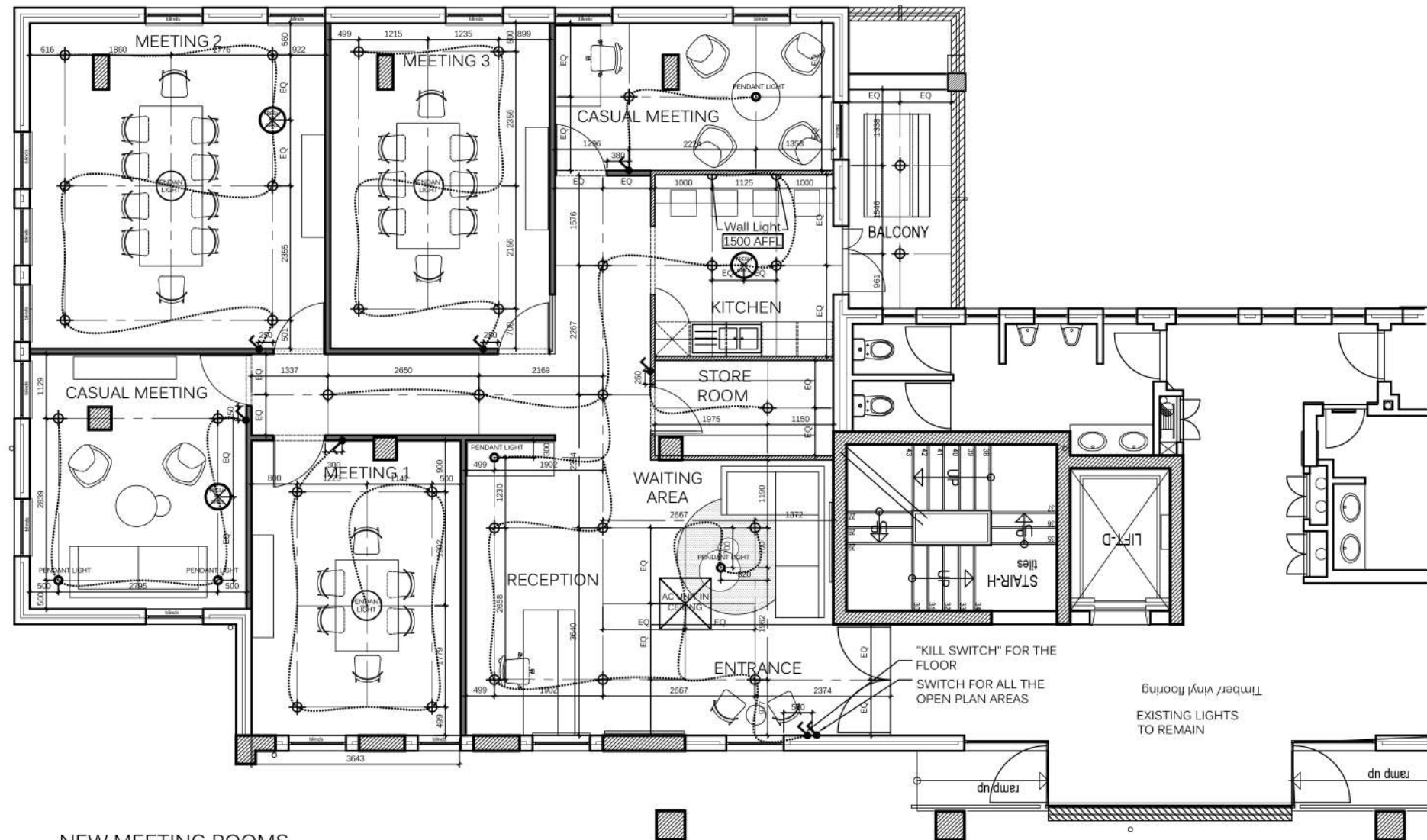
TERAZZO TILE FROM
UNION TILES . CODE
W34HPSL
Total: 59m²

150mm x 16mm painted
hardwood skirting with 5mm x
5mm cutout 50mm from the top



NEW MEETING ROOMS
NEW BUILD WORK PLAN
SCALE 1:50

<p>--- CHARCOL ACCENT WALL</p> <p>--- FEATURE WALL AND BRANDING TBC</p> <p>NOTES: ALL WALLS TO BE PAINTED WITH PLASCON WALL AND ALL OR SIMILAR. COLOUR TBC ALL CEILINGS TO BE PAINTED WITH WHITE PVA DOOR FRAMES, SKIRTINGS AND EXISTING WINDOW FRAMES TO BE PAINTED IN WHITE VELVAGLO.</p>	<p>NEW 90mm DRYWALL with Insulation</p>
---	---



NEW MEETING ROOMS
LIGHTING PLAN
SCALE 1:50

LIGHTING LEGEND:

	LED White down lights with warm light . SPEC TBC . DIRECTIONAL
	Switch Spec: WHITE SWITCH AND COVERPLATE TBC
	Pendent Light with warm light . SPEC TBC . Final Position TBD
	Fresh air grill TBC ENGINEER
	Cassette unit in ceiling TBC ENGINEER
	LED Wall Light with warm light. SPEC TBC. 1500 AFFL
	Pendent Light with warm light . SPEC TBC . Final Position TBD
	NOTE : FINAL POSITION OF PENDANT LIGHTS TO BE DETERMINED ON SITE

SPENCER PITMAN | TIMBER DOOR SCHEDULE

ITEM	QUANTITY	TOTAL
A	1	1

SPENCER PITMAN | TIMBER DOOR SCHEDULE

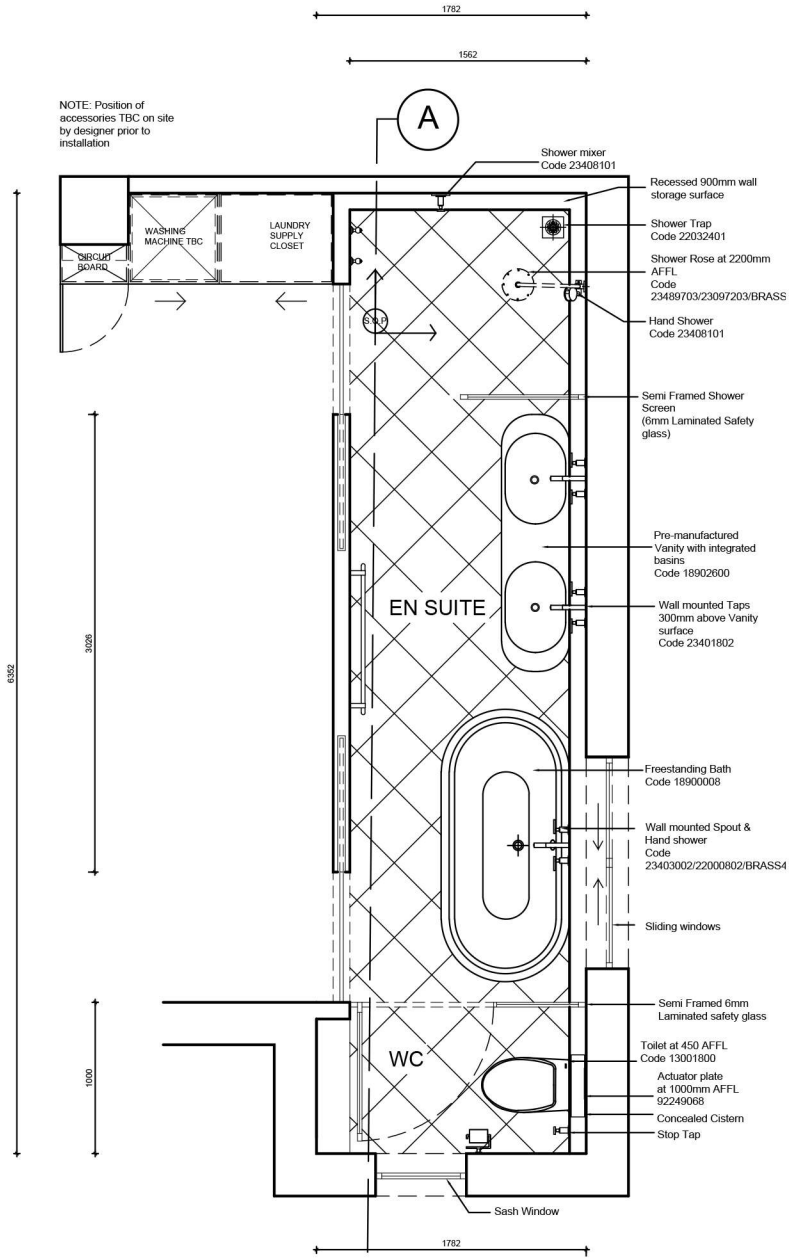
ITEM	QUANTITY	TOTAL
B	1	1

SPENCER PITMAN GLASS DOOR SCHEDULE

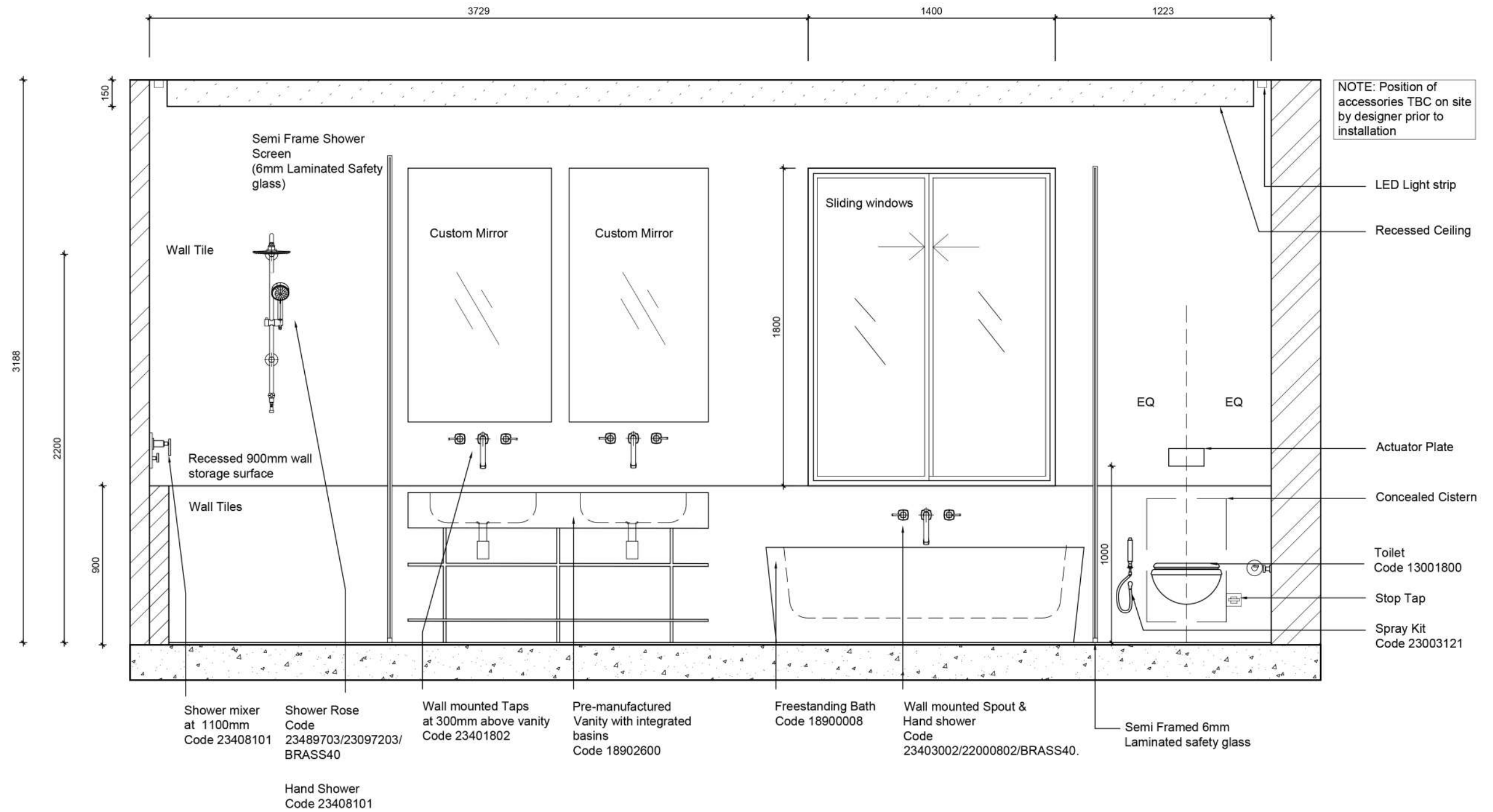
ITEM	QUANTITY	TOTAL
C	1	1

SPENCER PITMAN | WINDOW SCHEDULE

ITEM	QUANTITY	TOTAL
D	1	1



ON Q | APARTMENT 602
 EN SUITE PLAN
 SCALE 1:50



ON Q | APARTMENT 603
 EN SUITE ELEVATION AA
 SCALE 1:25

PRODUCT DESIGN

CANDELABRA | VASE 2023 OBJECT DESIGN

72 - 73

CREMA TABLE LIGHT DESIGN COMPETITION ENTRIES

75 - 79

DECOREX SUSTAINABLE CHAIR DESIGN ENTRY

81

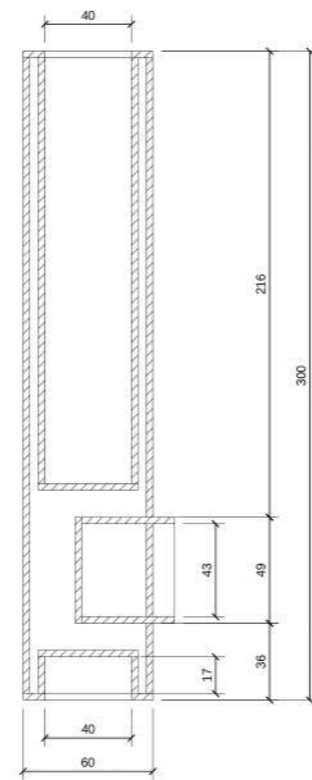




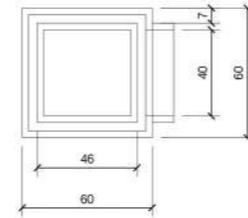
CLEAR TRANSIT



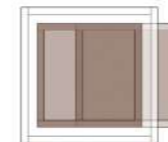
Introducing the Acrylic Vase and Candle Holder. Standing tall at 300mm with a generous 60x60 wide base, this design features a clean and modern geometric look. Crafted from clear acrylic sheets meticulously bonded with transparent adhesive, it offers versatility, serving as both a flower vase and a tea light candle holder. Its design mirrors the transitional phase of a young adult cautiously stepping into adulthood, representing that initial curiosity and exploration before taking the plunge into more grown-up experiences. This piece beautifully captures the essence of this transformative stage, making it a unique addition to any space.



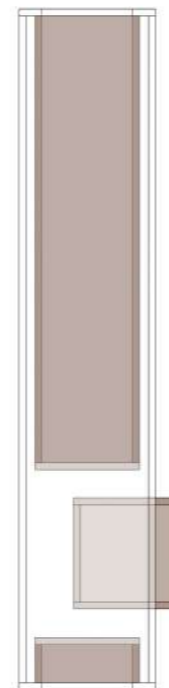
Side View | scale 1:2



Plan | scale 1:2



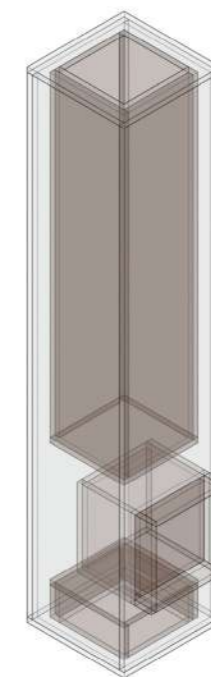
Top view



Side view A



Side view B



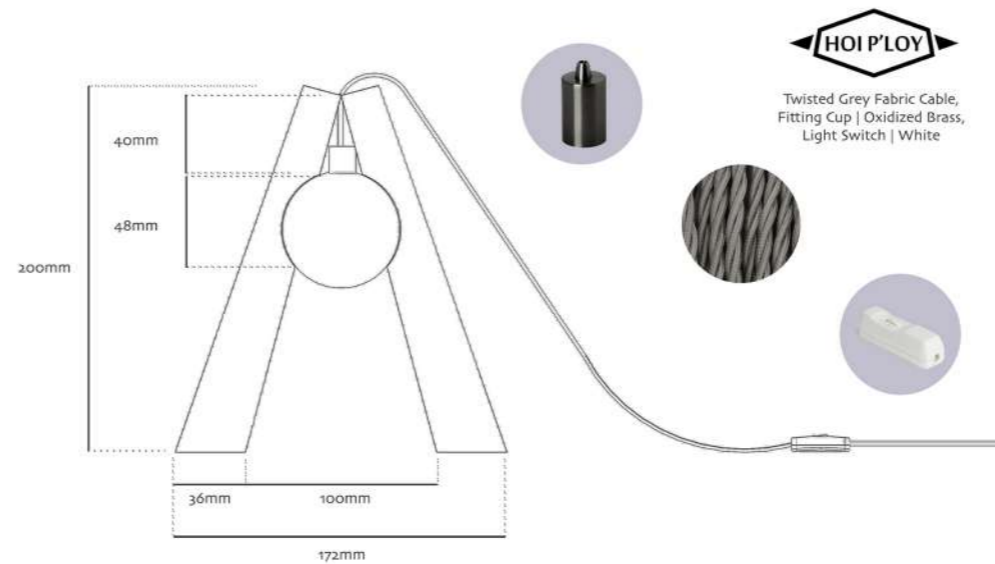
Axo view

A-GAME

DESIGN BY | Olivia Weihe



Introducing the A-Game, a cutting-edge table light that redefines illumination with its striking A-shaped design. At its core, this innovative fixture boasts a central light bulb that not only radiates a warm and inviting glow but also serves as a bold focal point. Crafted using advanced 3D printing technology, the A-Game is not just a lighting solution; it's a piece of functional art. Manufactured with reusable white-grey filament, it embodies sustainability. The initial inspiration drawn from a humble washing peg has evolved into a sophisticated, eye-catching luminaire that stands out in any space. The A-Game table light embodies both form and function, making it a game-changer in the world of lighting design.



MANUFACTURER



NEBULA

DESIGN BY | Olivia Weihe



The Nebular table light embodies a captivating blend of celestial inspiration and modern design. Crafted with cutting-edge 3D printing technology, the lamp's structure showcases the alluring depth of the cosmos, featuring a space-like form reminiscent of celestial bodies. Its circular ring, encircling the light bulb, mimics the beauty of planetary rings, evoking a sense of cosmic wonder. The lamp's elegance is accentuated by a sleek, black filament construction, highlighting the interplay of light and shadow. Resting upon a sturdy Grey square base, Nebular not only provides a functional source of illumination but also serves as a stunning decorative centerpiece, casting an otherworldly aura in any space.

MANUFACTURER



RED CUP VILLAGE

Red Cup Village is an on-demand consumer products manufacturing company, utilizing 3D printing and 3D scanning tech in combination with material science to help health professionals and users make physical products in a matter of hours faster than traditional manufacturing processes using material derived from corn-starch, sugarcane and recycled



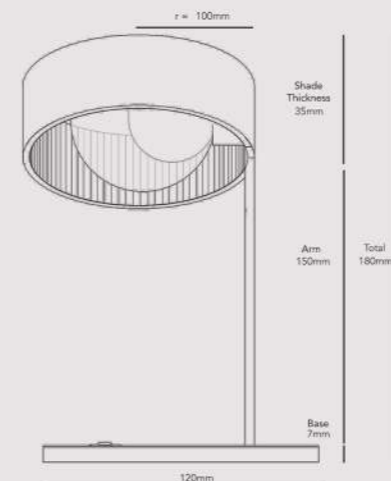
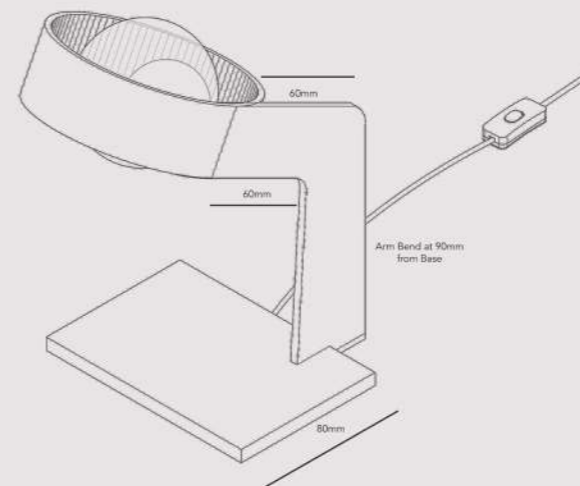
Twisted Grey Fabric Cable, Fitting Cup | Oxidized Brass, Light Switch | White



Eurolux O621CL Outdoor 200mm Bowl Fitting Pillar Mount Clear Black
Spazio LA1.04501 G45- Led Filament- Opal-E14-Dimmable



PolyLite PLA Pro 1.75mm 1 kg Grey and Black. Reusable 3D Printing Filament

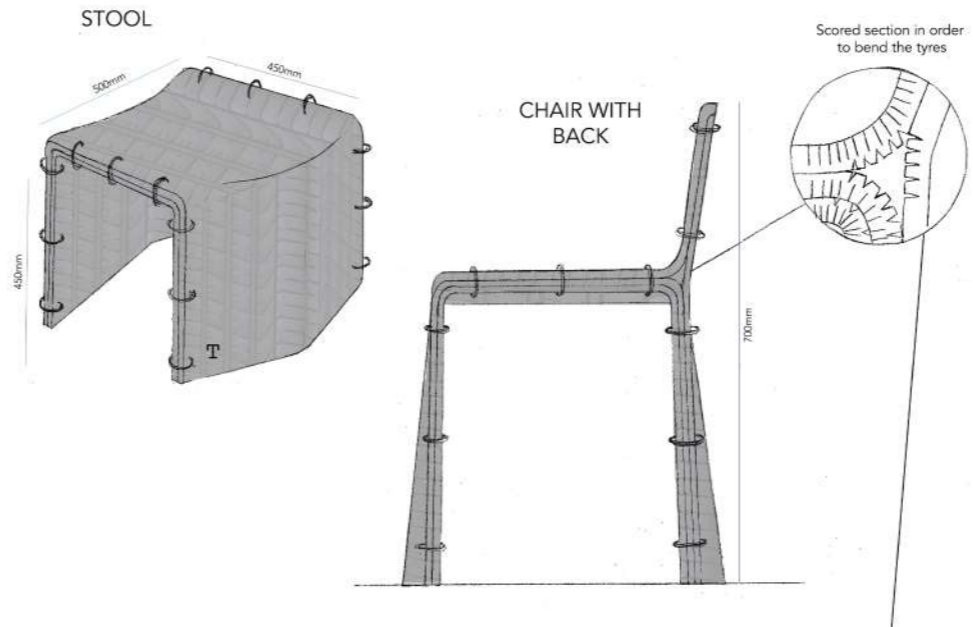


TRED
chair

The Tred chair was designed with the intention to deconstruct a car tire and to reinvent it into a functional, truth to material and easy to assemble product. The concept links to South Africa's recycling plan for used and discarded vehicle tires. These are mostly found along road sides or in land fields.

Unfortunately, the South African government unsuccessfully pull through with their plan, to brake down the tires into road tar and other building materials, due to missing funds.

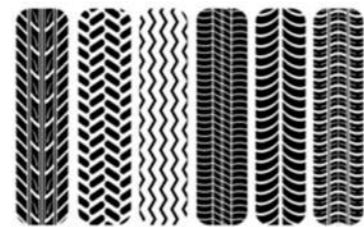
With more wireless Cellphones nowadays, landlines are not being used as often and therefore cellphone lines are being taken down and the wires can be reused for the low cost of nothing.



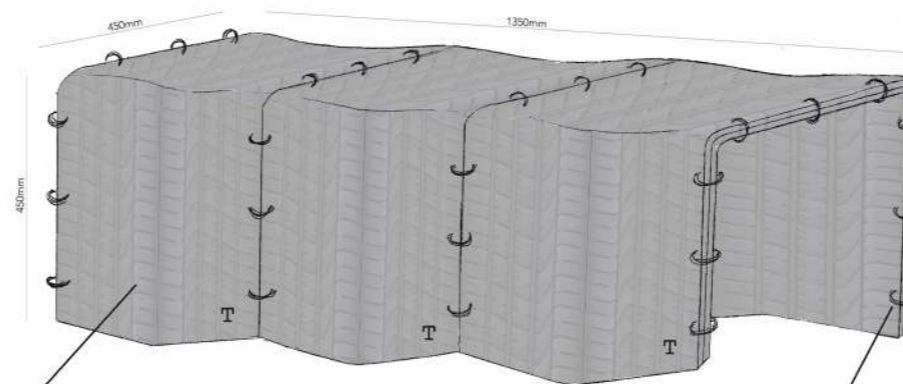
To assemble the Tred chair design, a tire is cut and fattened, thereafter small riges are carved out, to assist with the bending process of reshaping it into a square-like stool or chair with back.

Old landline cables are then thread through drilled holes to "sow" the layers of rubber together and keep the piece uniform.

Tire rubber is quite sturdy and once the individuily 9mm thick sheets are places ontop of eachother it becomes a even stronger and durable to use.



1350 BENCH



Projected Cost:

700 R/hr | Labour (estimated 3 hours)
R10 | Transport
R 0 | Tire from Palm Tyres, Maitland
R0 | Telephone Wire from
City of Cape Town, Maitland depo.

R 2 110 Total PC