

imke
nina



**imke
nina**

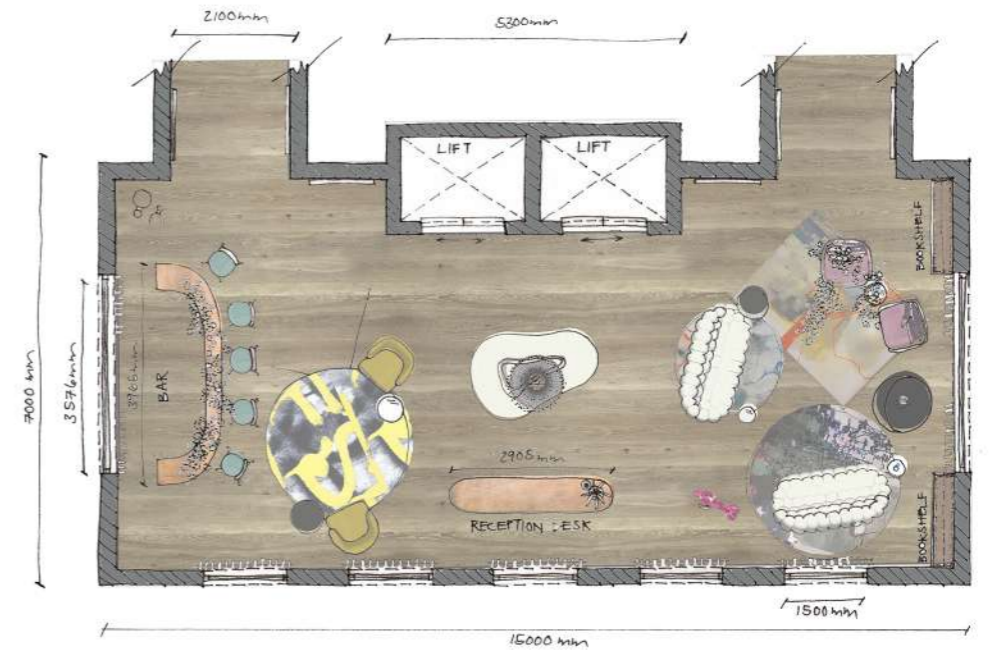
imkenina@gmail.com

+27 79 391 8535

@imkenina_design

—	
dock haus	1-4
—	
trill road	5-10
—	
house van coller	11-20
—	
algal	21-26
—	
jack by bruce jack	27-36
—	
the spencer	37-52
—	
atlantic studios	53-58
—	
pg bison 1.618	59-60
—	
mural	61-62
—	
product & surface designs	63-72
—	
photography	73-76
—	

dock haus



CLIENT | Thomaz Rossi of 'Dock Haus'
LOCATION | V&A Waterfront Canal District, Cape Town

CONCEPT

Designing the lift lobby, reception lounge, and waiting bar of the Dock Haus Hotel - a new hotel by art collector hotelier Thomaz Rossi, which aims to showcase and celebrate only the very best and most iconic international and local design, with an emphasis on up and coming South African artists.



view across lift lobby & reception from bar



slow lounge reception & waiting area



bar with solo seating arrangements



trill
road

CLIENT | Young, creative, city-living couple

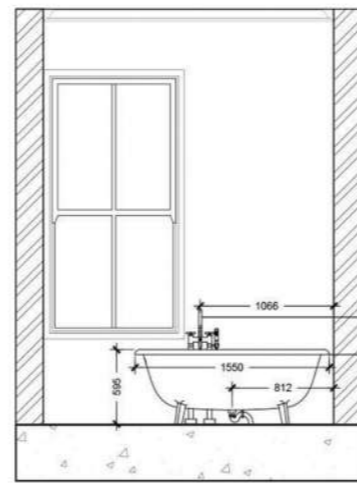
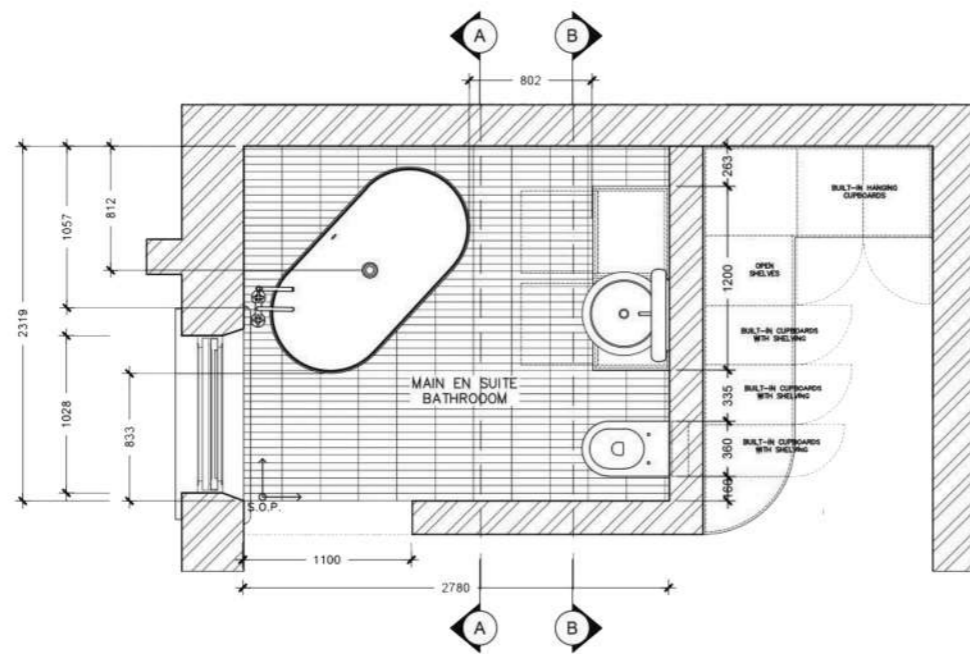
LOCATION | 63-65 Trill Road, Observatory, Cape Town

CLIENT REQUIREMENTS

- A 'seamless' living, dining, and kitchen area.
- Main bedroom with BIC and a spacious en-suite bathroom.
- Second bedroom that doubles up as a study, where your client can do the odd bit of work.
- A second bathroom with a shower, basin and WC for guests.
- A considered, and well-designed outdoor space.
- The clients have a fun and quirky to them - design with this in mind.

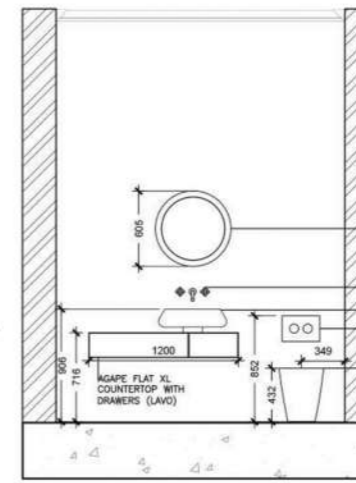


guest bedroom & study with semi en-suite



DORNBRACHT TARA FREESTANDING MIXER WITH HANDSHOWER IN MATTE WHITE (FLUSH)

AGAPE OTTOCENTO SMALL FREESTANDING BATHTUB (LAVO)



AGAPE SOLID MIRROR WITH LIGHTING (LAVO)

DORNBRACHT TARA WALL MOUNTED BASIN TAP IN MATTE WHITE (FLUSH)

AGAPE BAHON 2 COUNTERTOP BASIN (LAVO)

GLOBO ACTUATOR PLATE (LAVO)

GLOBO FORTY3 FLOOR MOUNTED TOILET (LAVO)

detailed plan and elevations of main en-suite
NTS



main en-suite



main bedroom with en-suite



dining room with original. restored fireplace



kitchen from dining room



lounge interior



mirror-clad courtyard wall framing lounge & patio

house van coller

CLIENT | Laurene van Coller
LOCATION | 38 Jan Steenstraat, Haarlem, Holland

CONCEPT

Renovating an existing Dutch row house and adding one additional floor in order to increase the floor space of a typically narrow and compact property by using the principles of tiny-house design along with the smart use of locally sourced and manufactured materials, while decorating with furniture and fittings from "kringloop winkels" (secondhand shops), making sustainability and support of circular economies a priority while still creating a functional, luxury space.





ENTRANCE INTO STUDY AND LOUNGE - FLUTED GLASS AND TIMBER



ENTRANCE INTO STUDY AND LOUNGE - FLUTED GLASS AND TIMBER



KITCHEN AND DINING STYLES AND ACCENTS AND STORAGE



KITCHEN AND DINING STYLES AND ACCENTS AND STORAGE



LIVING ROOM AND OTHER LOOSE STANDING FURNITURE FOR STORAGE AND SEATING



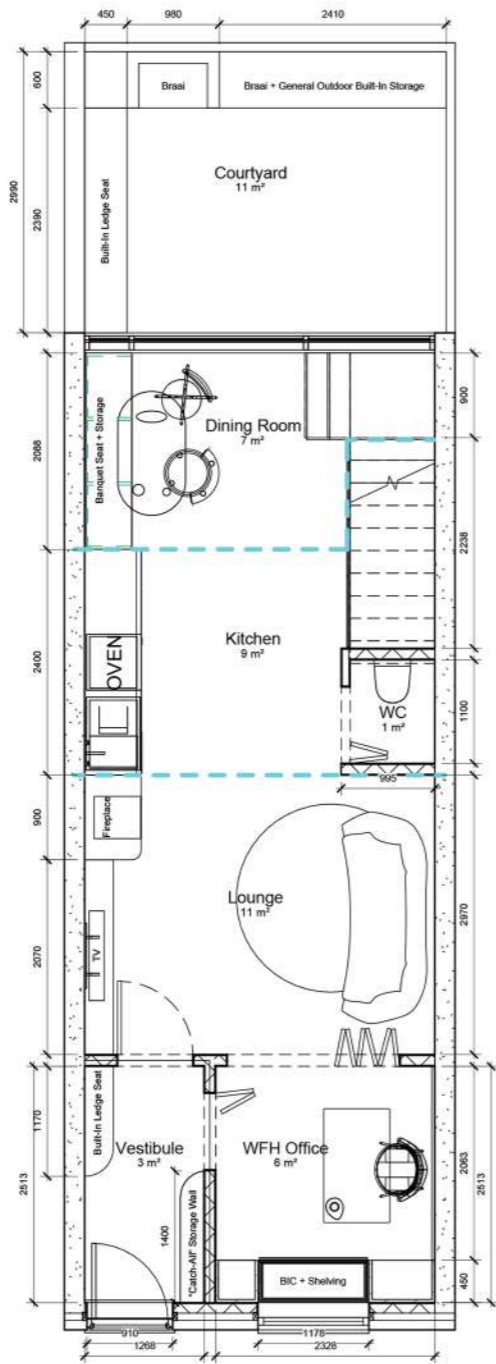
NATURAL FABRICS AND COLOUR SCHEMES FOR BEDROOMS THROUGH ALL FLOORS



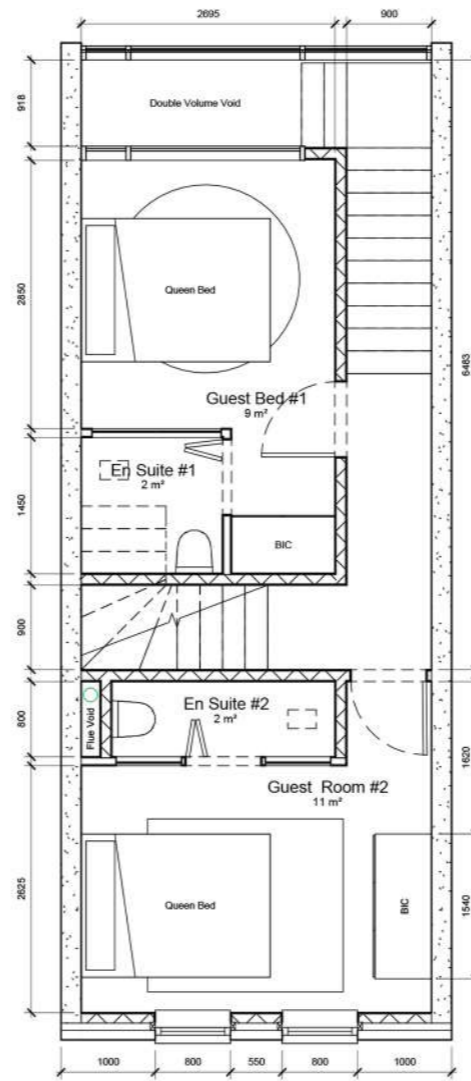
BALCONY, STORAGE AND LIGHTING ACCENTS FOR BEDROOMS



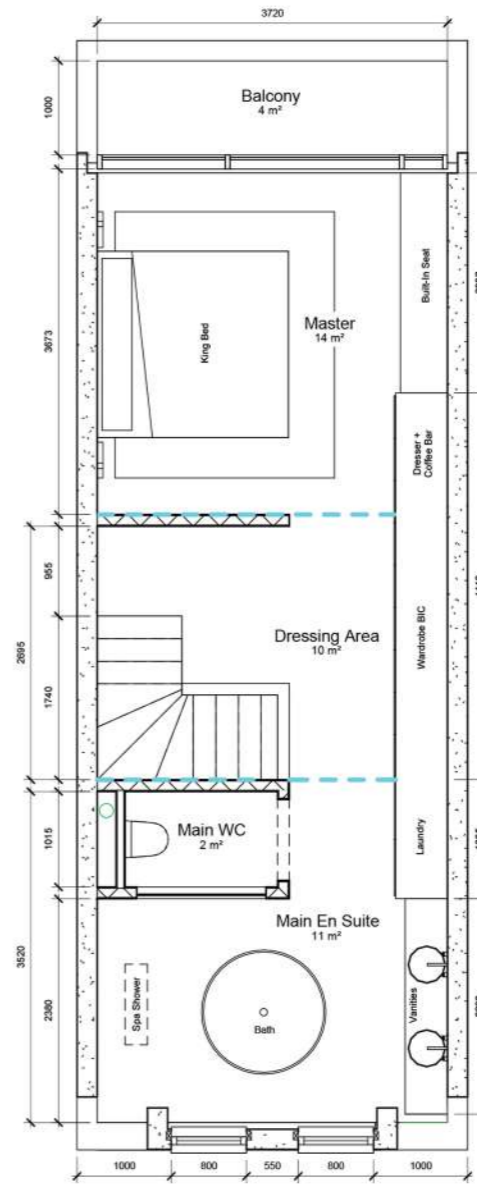
BATHROOM OPTIONS FOR ALL FLOORS



1 0. Ground Floor
1 : 50



2 1. First Floor
1 : 50



3 2. Second Floor
1 : 50



east elevation NTS



west elevation NTS



view across lounge & fireplace into kitchen & dining area



home office. entrance & vestibule



elevation perspective of lounge. kitchen. dining. & exterior



elevation perspective of staircase with integrated storage. WC. lounge. & study



mirror-clad storage underneath staircase



guest bedroom with BIC & compact en-suite



main en-suite bathroom and WC



main bedroom with wardrobe wall, view into bathroom



main en-suite bath & wardrobe wall



algal

CLIENT | Scott + Partners

URBAN EXPERIENCE | 10 Searle Street, Woodstock, Cape Town

REMOTE EXPERIENCE | Venus Pools, Cape Point Nature Reserve, Cape Town

CONCEPT

al*' *gal - adjective, relating to or characteristic of algae

In a world where there appears to be such abundance, our very sources of life and health - like fresh air and fresh water - have become a luxury.

Living by the ocean sometimes creates the illusion that water is in great supply, yet the majority of this water is saline and not fit for human consumption. It does however give life to a truly diverse and important resource in the form of algae - a life form that can be used as anything from nutrient dense food source to building material to plastic and fabric alternative, and they even have the ability to improve the quality of our air through sequestration of carbon dioxide from the atmosphere.

My inspiration therefore came from the exciting prospect of algae based materiality, drawing upon new research and technology, the history of my chosen locations and their connections to the sea, in order to design future proof solutions and experiences.



the urchin dining area

















the peak bar



the urchin dining experience & test kitchen



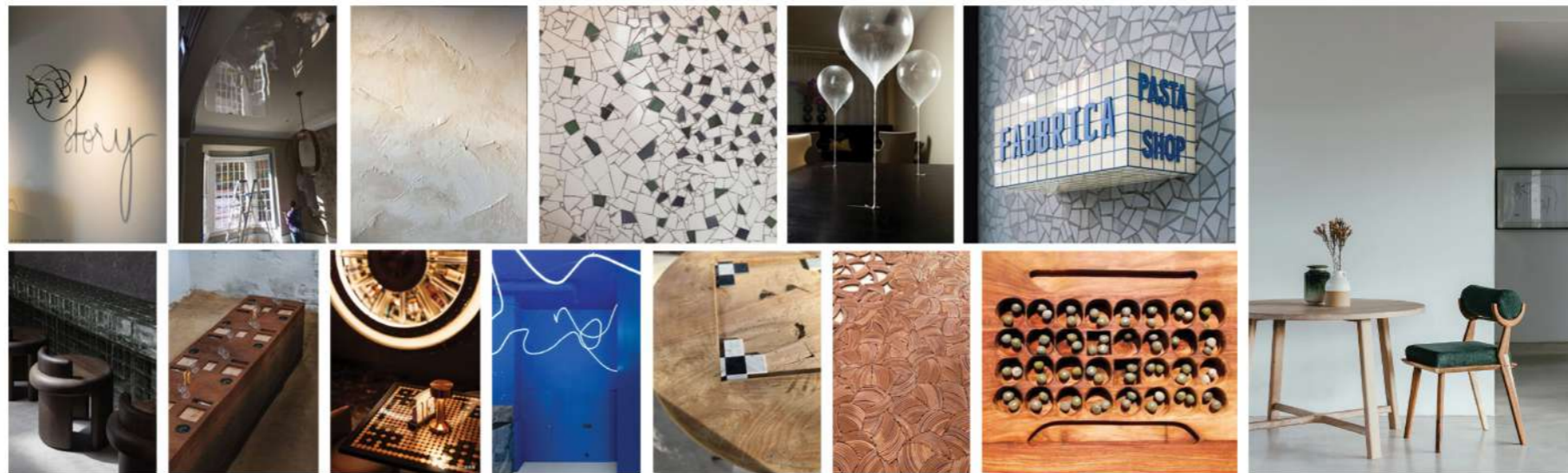
bedroom & en-suite

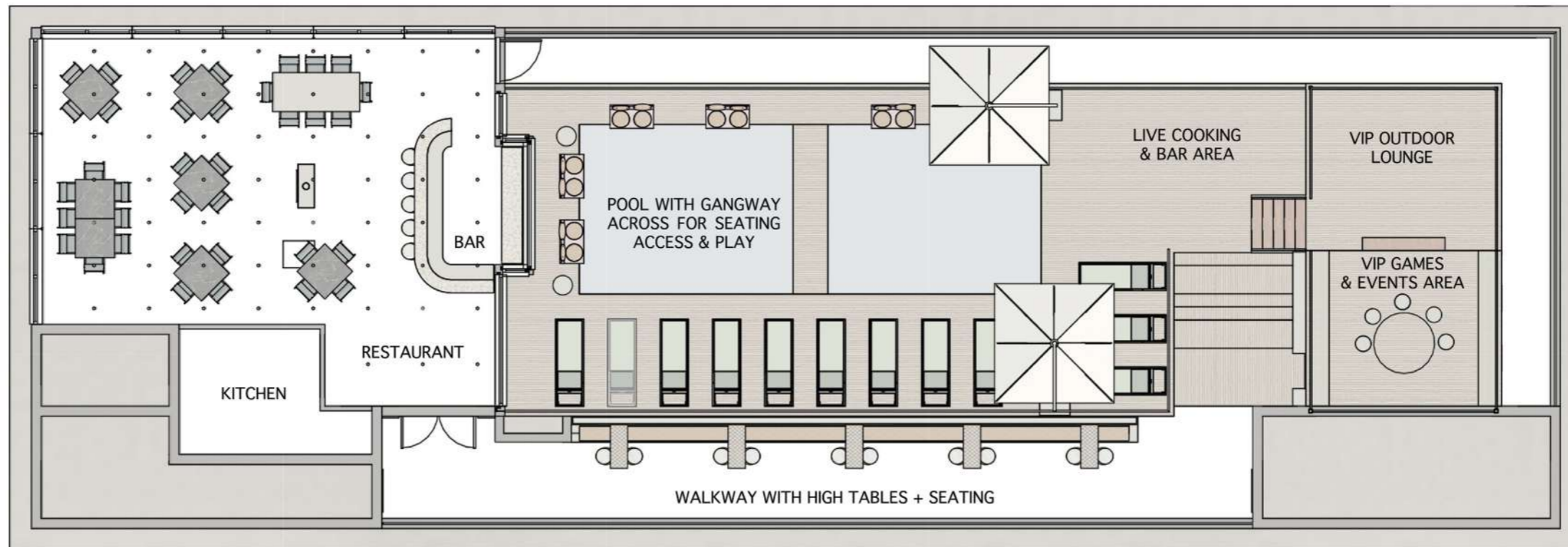
-  Acoustic panels made from textile waste clad the ceilings of the entire common area.
-  Curved and rippled stainless steel clads the bulkheads and pillars.
-  Handmade "Bubble" tile by local manufacturer Veelvlaak to clad the walls inside the common areas.
-  Bioplastic curtain made from seaweed and food waste.
-  Cast limestone in Westcoast Olive by local manufacturer Wolkberg Casting Studios in Johannesburg.
-  Plastic tiles created with plastic waste found in the surrounding areas and greater Cape Town area.
-  Bedroom walls finished in Fern Green skimmed CemCote
-  The timber cladding in both locations, is constructed out of Alien Invasive Plants from the cape
-  Local hemp fabrics from Hemporium and The Fabric House for bedding and curtaining.
-  Mossy green, plush, custom carpet from Belgotex.
-  Custom, precast limestone doors by Wolkberg in Coral.
-  Pixel tile in Platinum, taken from Wolkberg's Evolve range of tiles made from 81% recycled tiles
-  One-way mirror hides WC and basin from sight.
-  Terrazzo in Midnight but Notation Design in Durban.



Jack

AT THE NEW "JACK" CELLAR ROOM, TASTING AND DINING EXPERIENCE, WE LIKE TO HAVE FUN AND TO CONSTANTLY GAMBLE AND EXPERIMENT WITH NEW FOOD AND WINE COMBINATIONS AND EXPERIENCES TO MATCH. WE EVEN ENCOURAGE YOU TO PLAY WITH YOUR FOOD! THIS SPACE SERVES AS A REMINDER TO HAVE FUN AND ENJOY THE PRESENT MOMENT TO ITS FULLEST, NO MATTER THE HAND YOU'RE DEALT.



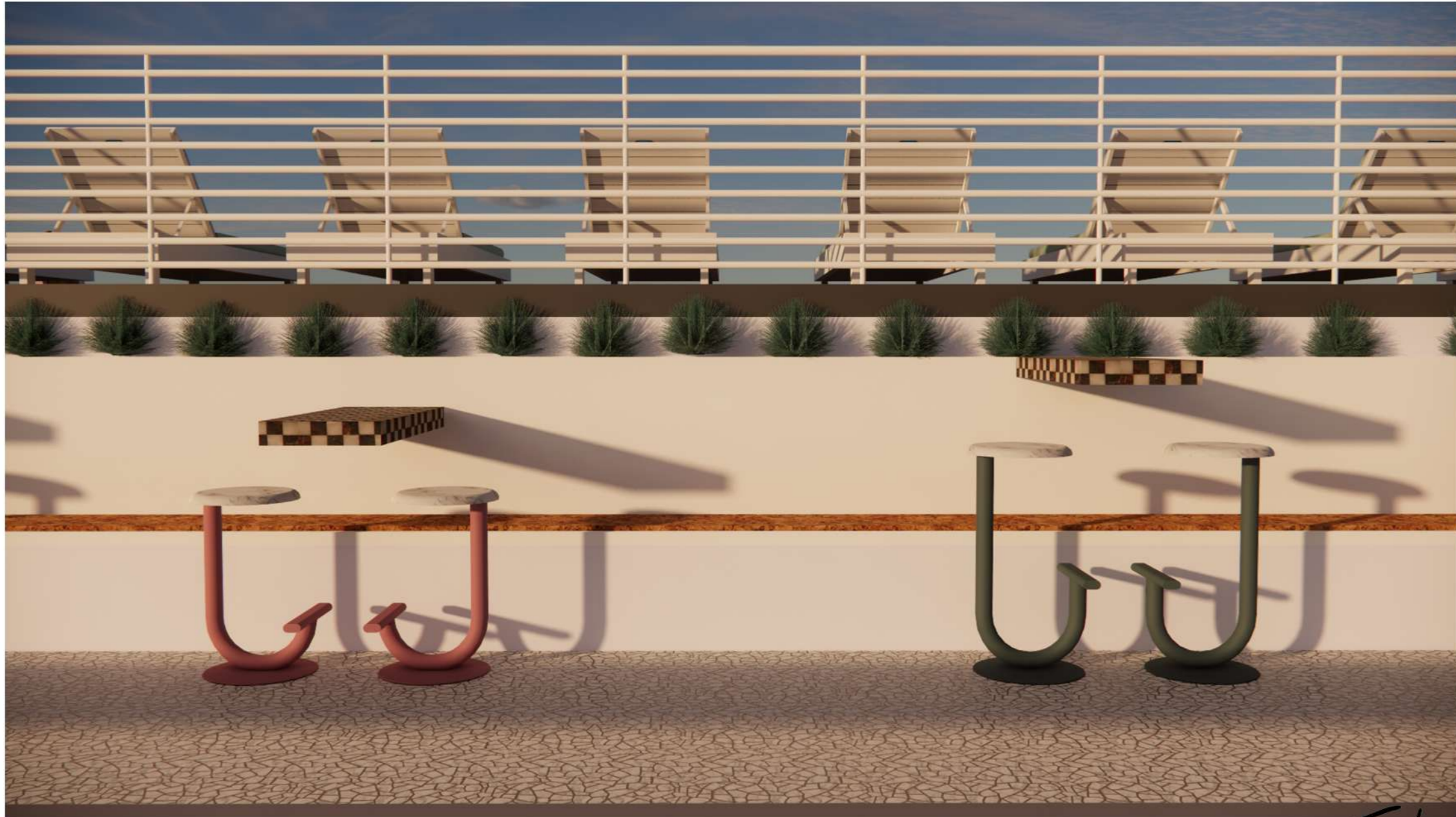


FLOOR PLAN NTS



Jack

walkway from landing



built-in seating in exterior walkway

Jack



Jack

bar as viewed across restaurant interior



restaurant interior with chip tile floors. & high gloss walls & ceiling. reminiscent of retro pool interiors

Jack



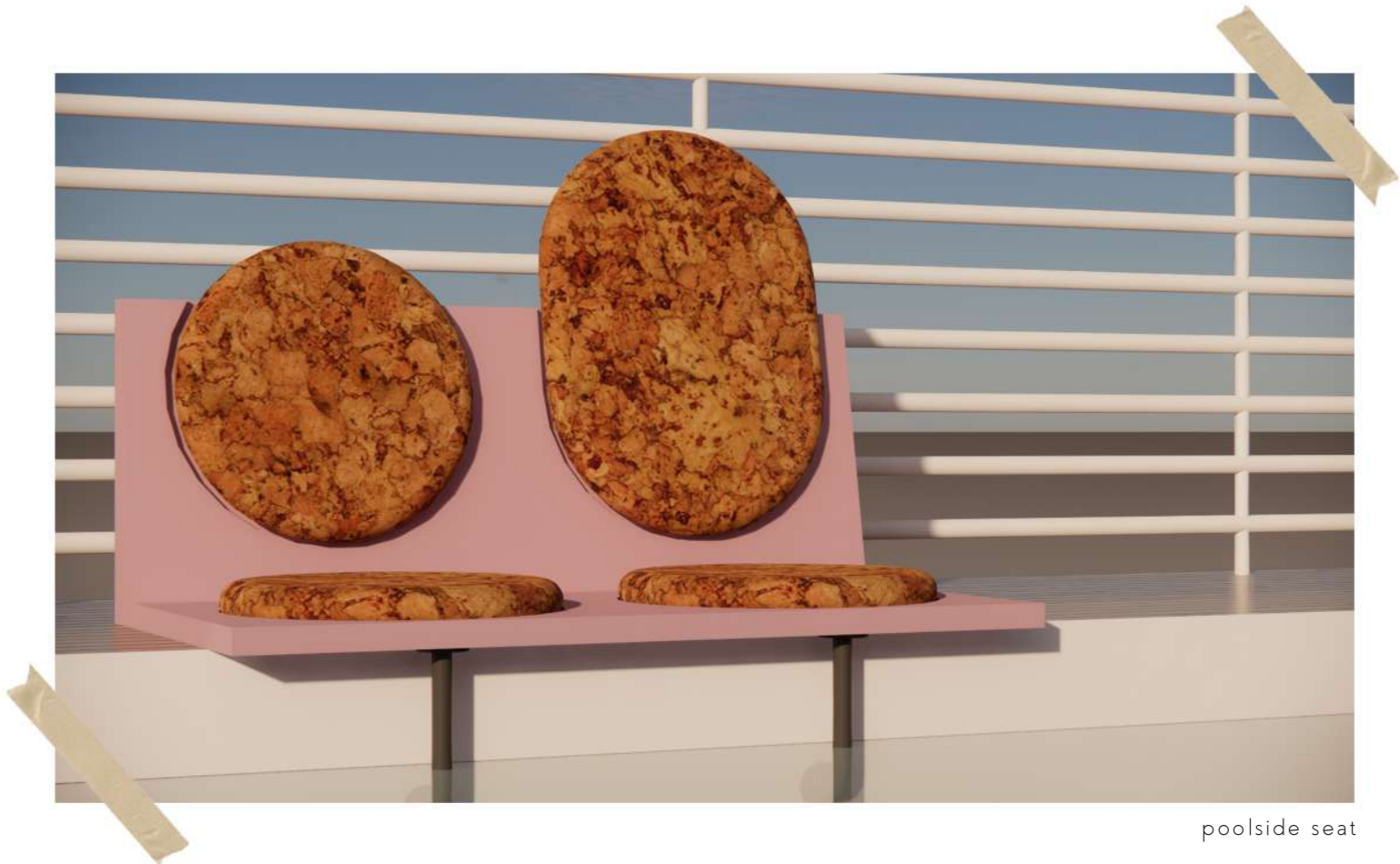
Jack

bar and view to general pool deck

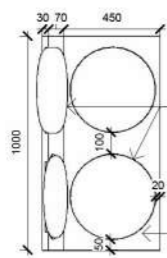


VIP section with seating resembling chess & board game play pieces

Jack



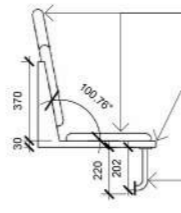
poolside seat



400mmOD round and 560mm oblong seats and backrests made out of 50mm recycled cork; fitted into a recess and fixed to pine substructure with glue; raw finish

pine seat and backrest constructed with planed, laminated and routed pine; fixed together with screws and glue; spraypainted in dulux glow garden

1 plan detail
1 : 25

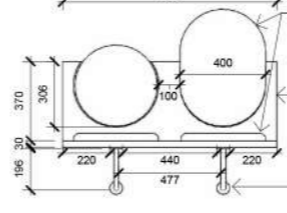


400mmOD round and 560mm oblong seats and backrests made out of 50mm recycled cork; fitted into a recess and fixed to pine substructure with glue; raw finish

pine seat and backrest constructed with planed, laminated and routed pine; fixed together with screws and glue; spraypainted in dulux glow garden

seat bracket made of 210x22.2mm OD cold rolled round steel tube with 1.6mm wall thickness and 24 degree bend; welded to round steel disc, fixed to bottom of seat with screws; dark grey powder coat finish

2 left elevation
1 : 25

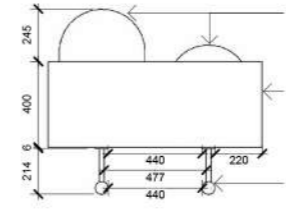


400mmOD round and 560mm oblong seats and backrests made out of 50mm recycled cork; fitted into a recess and fixed to pine substructure with glue; raw finish

pine seat and backrest constructed with planed, laminated and routed pine; fixed together with screws and glue; spraypainted in dulux glow garden

seat bracket made of 210x22.2mm OD cold rolled round steel tube with 1.6mm wall thickness and 24 degree bend; welded to round steel disc, fixed to bottom of seat with screws; dark grey powder coat finish

3 front elevation
1 : 25

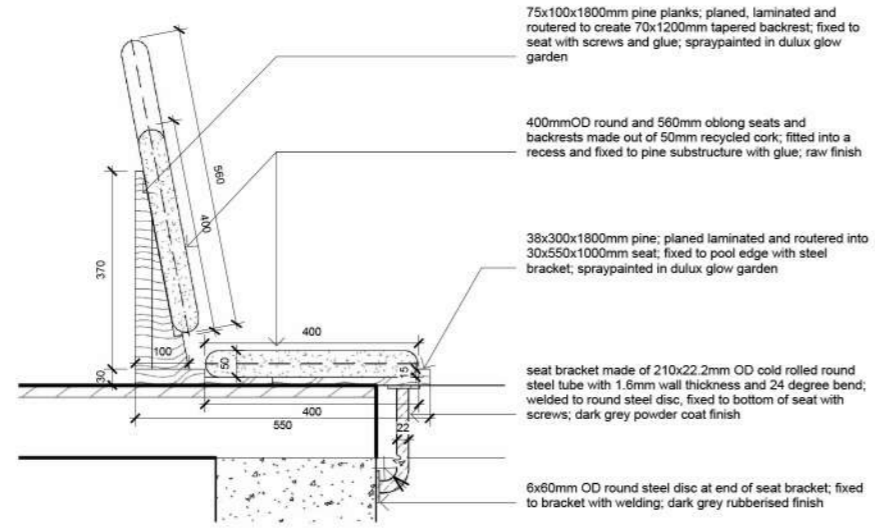


400mmOD round and 560mm oblong seats and backrests made out of 50mm recycled cork; fitted into a recess and fixed to pine substructure with glue; raw finish

pine seat and backrest constructed with planed, laminated and routed pine; fixed together with screws and glue; spraypainted in dulux glow garden

seat bracket made of 210x22.2mm OD cold rolled round steel tube with 1.6mm wall thickness and 24 degree bend; welded to round steel disc, fixed to bottom of seat with screws; dark grey powder coat finish

4 back elevation
1 : 25



75x100x1800mm pine planks; planed, laminated and routed to create 70x1200mm tapered backrest; fixed to seat with screws and glue; spraypainted in dulux glow garden

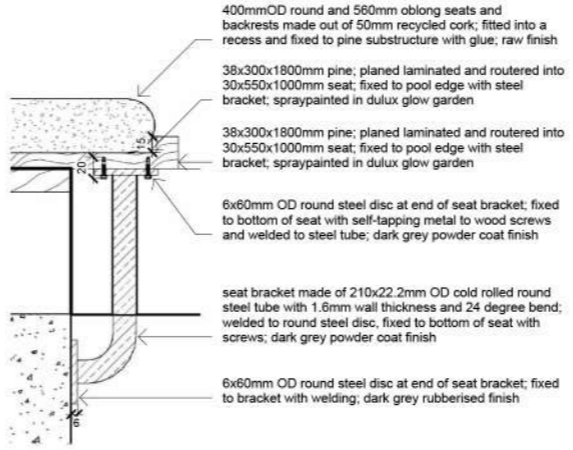
400mmOD round and 560mm oblong seats and backrests made out of 50mm recycled cork; fitted into a recess and fixed to pine substructure with glue; raw finish

38x300x1800mm pine; planed laminated and routed into 30x550x1000mm seat; fixed to pool edge with steel bracket; spraypainted in dulux glow garden

seat bracket made of 210x22.2mm OD cold rolled round steel tube with 1.6mm wall thickness and 24 degree bend; welded to round steel disc, fixed to bottom of seat with screws; dark grey powder coat finish

6x60mm OD round steel disc at end of seat bracket; fixed to bracket with welding; dark grey rubberised finish

5 section cut
1 : 10



400mmOD round and 560mm oblong seats and backrests made out of 50mm recycled cork; fitted into a recess and fixed to pine substructure with glue; raw finish

38x300x1800mm pine; planed laminated and routed into 30x550x1000mm seat; fixed to pool edge with steel bracket; spraypainted in dulux glow garden

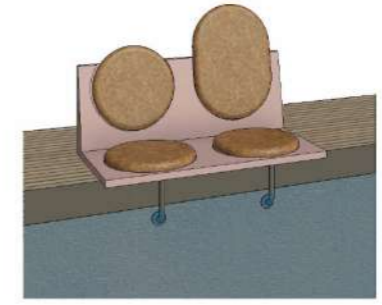
38x300x1800mm pine; planed laminated and routed into 30x550x1000mm seat; fixed to pool edge with steel bracket; spraypainted in dulux glow garden

6x60mm OD round steel disc at end of seat bracket; fixed to bottom of seat with self-tapping metal to wood screws and welded to steel tube; dark grey powder coat finish

seat bracket made of 210x22.2mm OD cold rolled round steel tube with 1.6mm wall thickness and 24 degree bend; welded to round steel disc, fixed to bottom of seat with screws; dark grey powder coat finish

6x60mm OD round steel disc at end of seat bracket; fixed to bracket with welding; dark grey rubberised finish

6 seat bracket detail
1 : 5



7 3d view

No.	Description	Date

AUTODESK
www.autodesk.com/revit

CODE	STATUS	SUITABILITY DESCRIPTION	PURPOSE OF ISSUE

PROJECT	Jack
SHEET	Sheet

CLIENT	Bruce Jack Wines		
Date	Project number	Scale (@ A3)	
23.08.2023	7	As indicated	
Drawn by	DRWAING NUMBER	REV	
Author	A101		
Checked by			
Checker			

2023/09/01 11:29:18

the spencer

CLIENT | Spencer Pitman

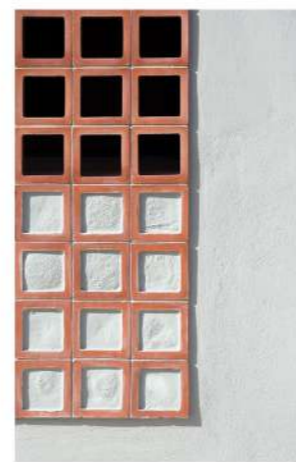
LOCATION | 24 Dreyer Street, Claremont, Cape Town

CONCEPT

Conceptualising and designing four new and additional storeys of luxury studios, 2-bedroom, and penthouse apartments for the developer-owner of the current, existing property.

In my penthouse design, the foyer showcases the grandness and feeling of luxury created by clever space planning to create the idea of large open spaces. The lower level houses the living spaces, kitchen and guest WC, and the grand staircase leads you to the upper level that houses a master bedroom with walk-in wardrobe and en-suite bathroom, as well as a second bedroom and separate bathroom.

Informed by circles and squares and inspired by retro-futuristic architecture of the 1950s and the work of architects such as Robert Silke, my interior spaces and building in its entirety showcase the rounded edges and 'endpoints' and quirky, playful circular windows.





pool deck and exterior of penthouses



materials



penthouse #1 | lower level plan view NTS



penthouse #1 | upper level plan view NTS



entrance & lounge



dining room & kitchen

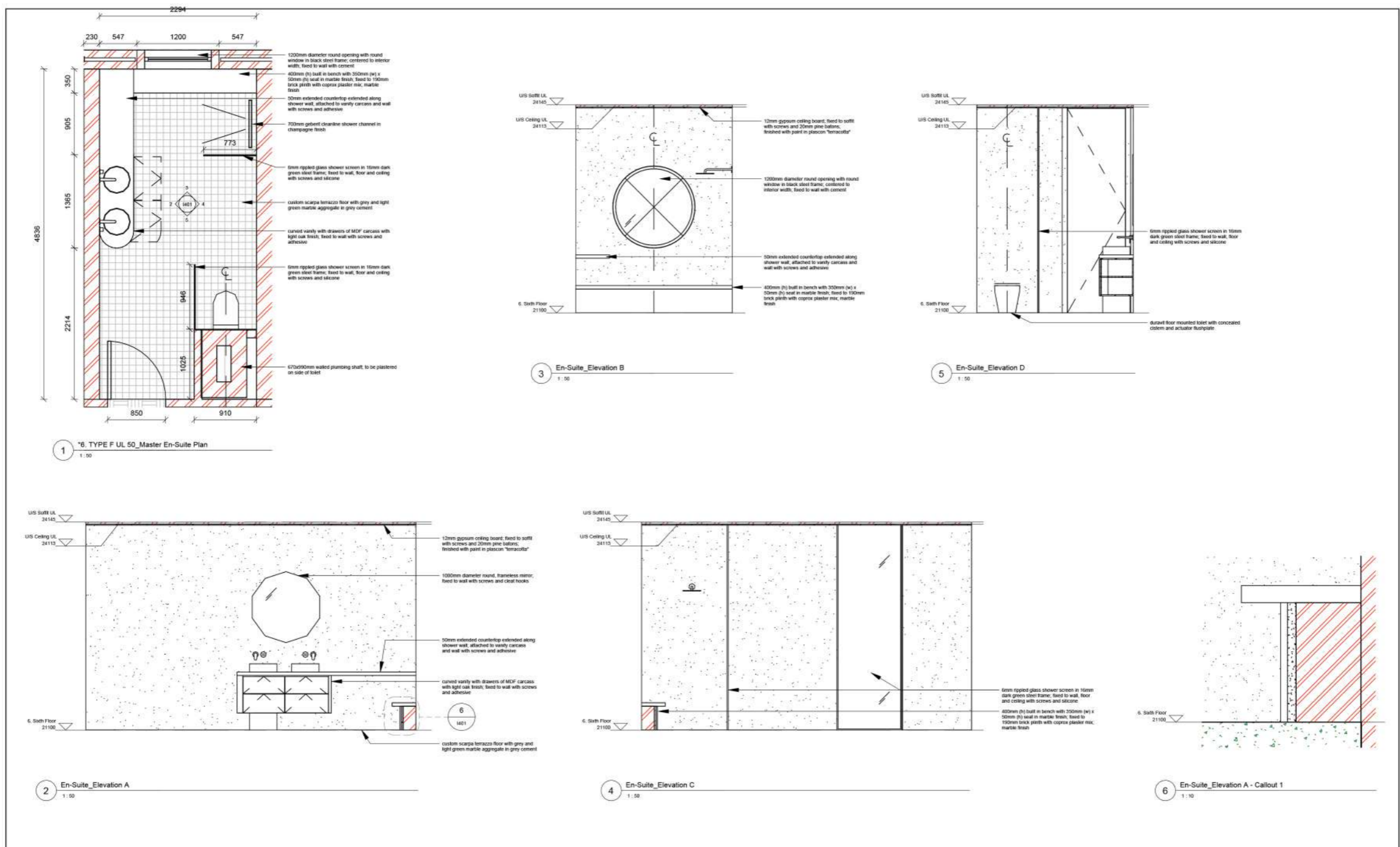


main bedroom walk-in wardrobe with dresser



main en-suite bathroom

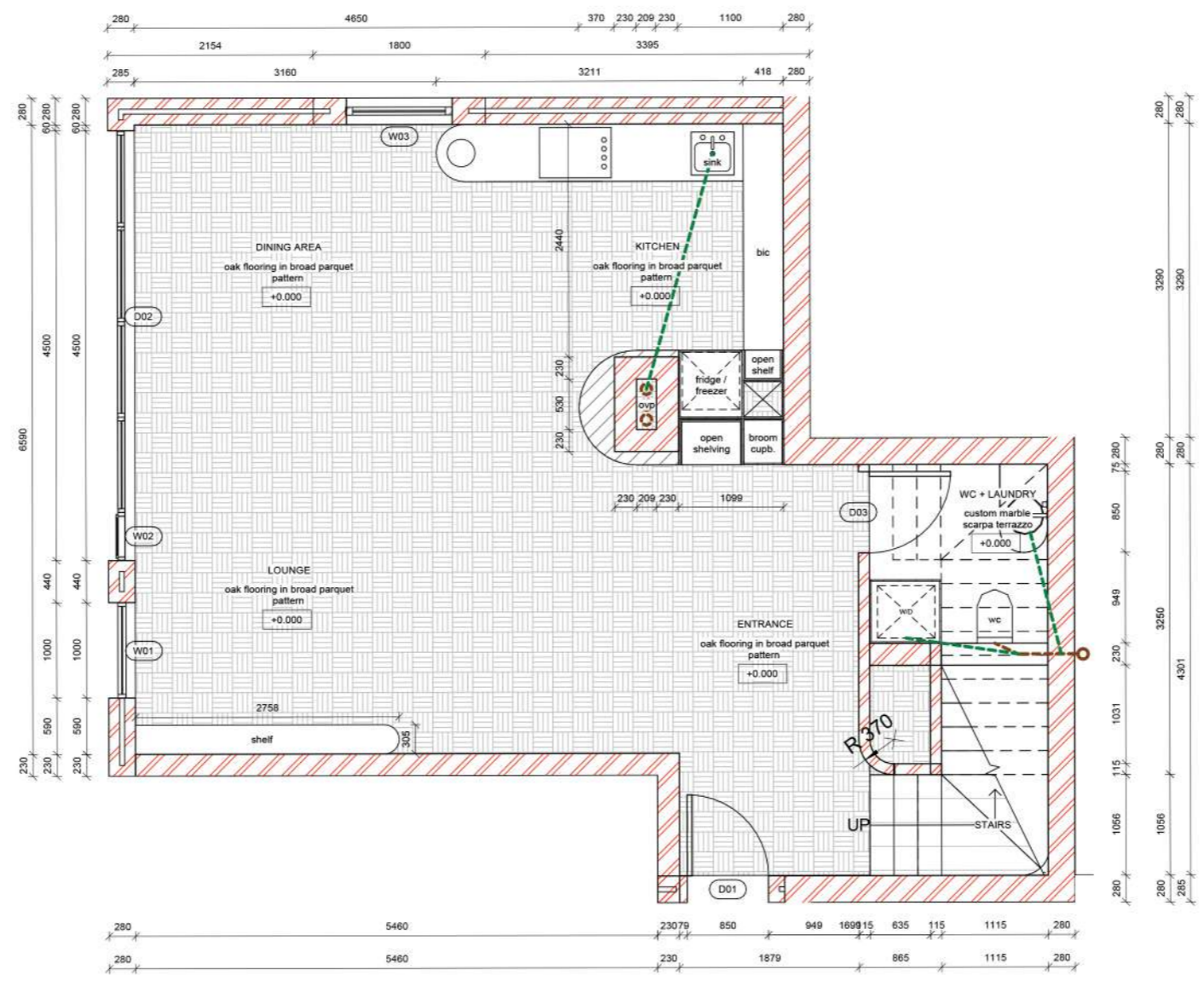
CONSTRUCTION DRAWINGS
PENTHOUSE APARTMENTS



No.	Description	Date

CODE	STATUS	SUITABILITY DESCRIPTION	PURPOSE OF ISSUE

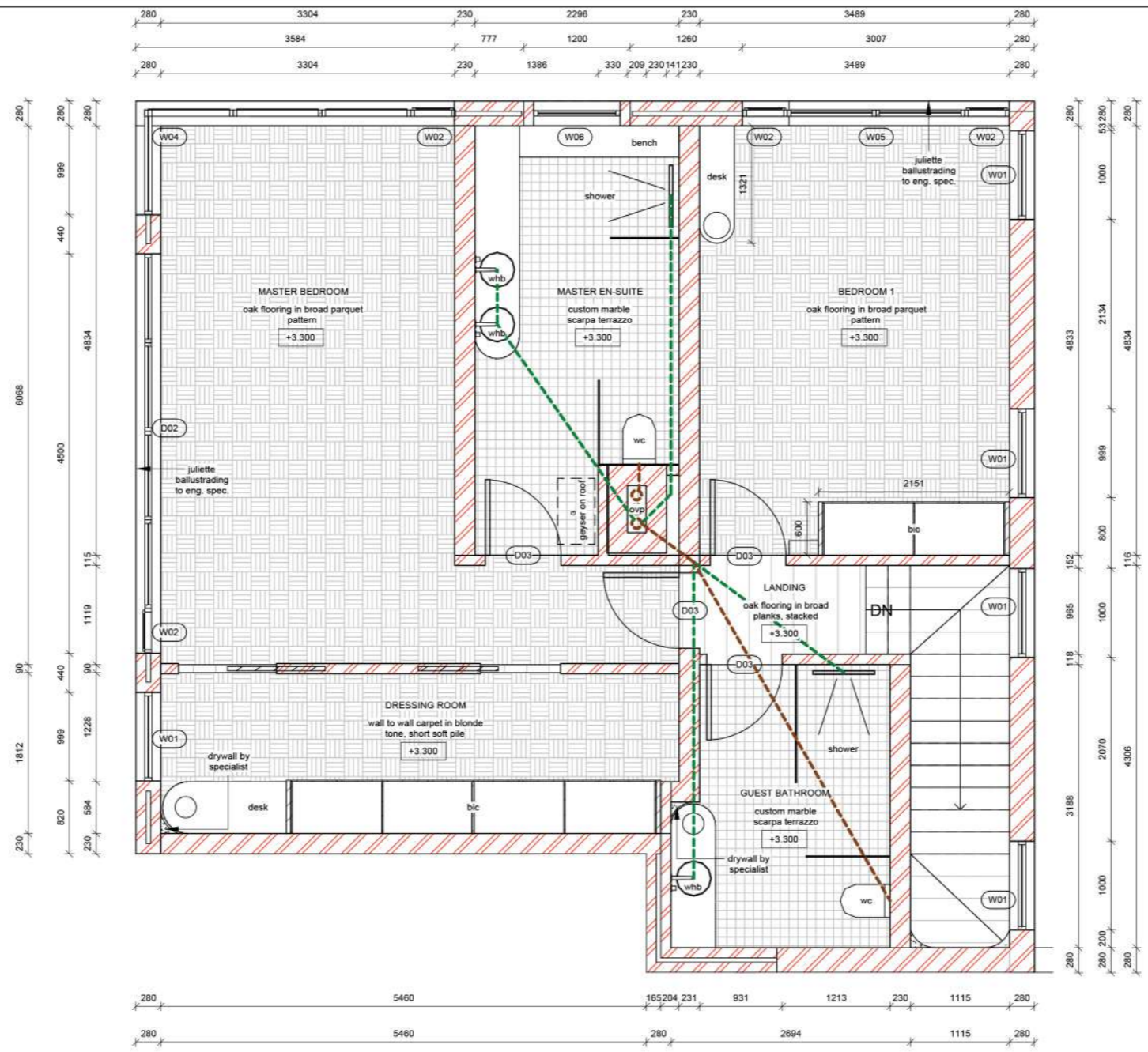
PROJECT	Proposed New Apartments		
CLIENT	Spencer Pitman		
DATE	Issue Date	Project number	Scale (@ A3)
		P8	As indicated
SHEET	Master En-Suite_Detail Plans & Elevations	Drawn by	Imke Nina Gehring
		Checked by	
		Drawing Number	I401
		REV	



1 *S. TYPE F LL 50
1:50

ELECTRICAL, WATER AND DRAINAGE ON THIS DRAWING IS SCHEMATIC ONLY

	No.	Description	Date	PROJECT				CLIENT		
				Proposed New Apartments				Spencer Pitman		
				SHEET				Date	Project number	Scale (@ A3)
				Construction Layout GF				Issue Date	P8	1 : 50
	CODE	STATUS	SUITABILITY DESCRIPTION	PURPOSE OF ISSUE			Drawn by	Drawing Number	REV	
							Imke Nina Gehring	I101		
							Checked by			



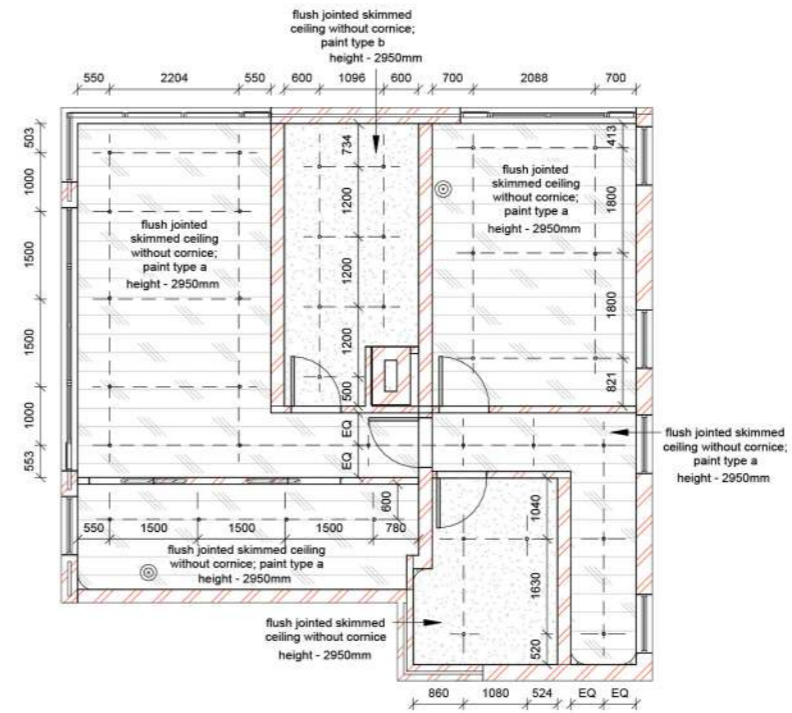
ELECTRICAL, WATER AND DRAINAGE ON THIS DRAWING IS SCHEMATIC ONLY

1 *6. TYPE F UL 50
1:50

	No.	Description	Date	PROJECT		CLIENT	
				Proposed New Apartments		Spencer Pitman	
				SHEET		Date	Project number
				Construction Layout FF		Issue Date	P8
	CODE	STATUS	SUITABILITY DESCRIPTION	PURPOSE OF ISSUE	Drawn by	Drawing Number	Scale (@ A3)
					Imke Nina Gehring	I102	1:50
					Checked by		REV



1 *5. TYPE F LL 100_Ceiling Plans
1:100



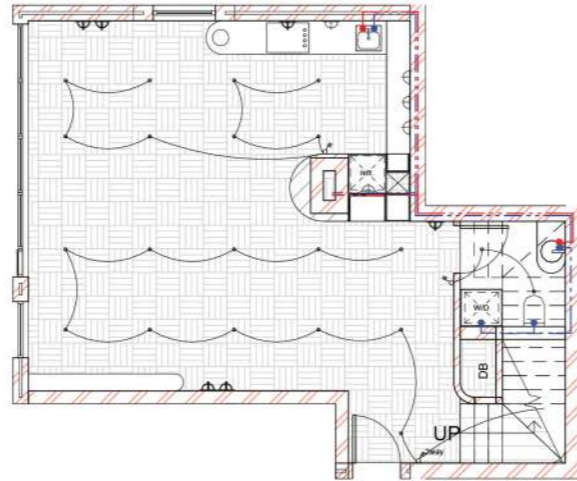
2 *6. TYPE F UL 100_Ceiling Plans
1:100

No.	Description	Date

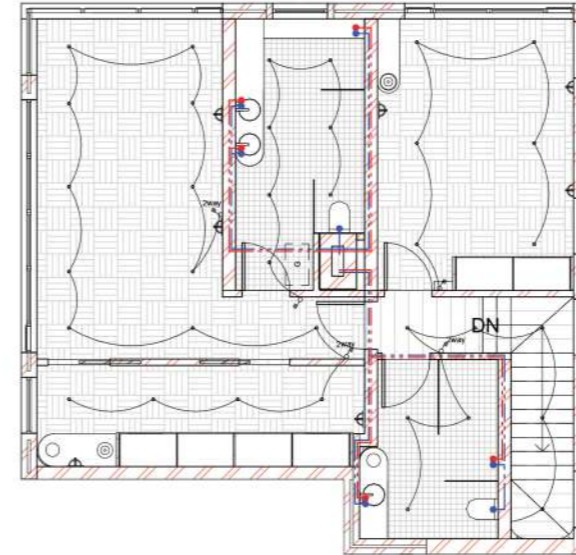
CODE	STATUS	SUITABILITY DESCRIPTION	PURPOSE OF ISSUE

PROJECT	Proposed New Apartments
SHEET	Reflected Ceiling Plans

CLIENT Spencer Pitman		
Date	Project number	Scale (@ A3)
Issue Date	P8	1 : 100
Drawn by	Drawing Number	REV
Imke Nina Gehring	I105	
Checked by		



1 *5. TYPE F LL 100_Electrical & Water Plans
1:100













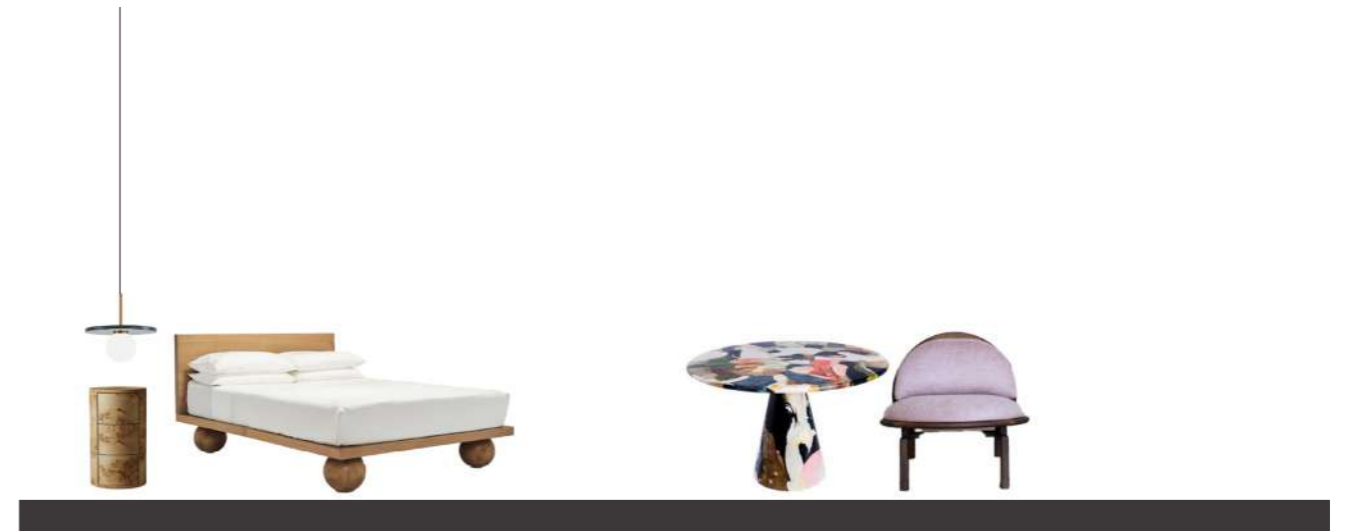
2 *6. TYPE F UL 100_Electrical & Water Plans
1:100

LEGEND	
	GEYSER
	HOT WATER POINT (RED)
	COLD WATER POINT (BLUE)
	LED PENDANT LIGHT UNDERSIDE OF FITTING 2200MM AFFL UNLESS OTHERWISE SPECIFIED
	LED RECESSED DOWNLIGHTS
	DOUBLE POWER SOCKET OUTLET 300MM AFFL UNLESS OTHERWISE SPECIFIED
	ELECTRICAL POWER OUTLET 300MM AFFL UNLESS OTHERWISE SPECIFIED
	QUAD LEVER SWITCH 1200MM AFFL UNLESS OTHERWISE SPECIFIED

No.	Description	Date	PROJECT		CLIENT		
			Proposed New Apartments		Spencer Pitman		
			SHEET		Date	Project number	Scale (@ A3)
			Electrical & Water Reticulation Plans		Issue Date	P8	1:100
					Drawn by	Drawing Number	REV
					Imke Nina Gehring	I106	
					Checked by		

THE SPENCER: SANWARE SCHEDULE							
KITCHEN							
Image:	Item:	Name:	Description:	Qty:	Supplier:	Price per unit (inc. VAT):	Total Price (inc. VAT):
	Sink	Franko Matis MR621	1160x500mm inset double bowl sink with drainer tray, color white, granite	1	Flush	R7 475,00	R7 475,00
	Mixer	Bulide Neo Stainless Steel - Single Hole Sink Mixer Tap	Stainless steel deck-mounted mixer	1	CP&B	R1 500,00	R1 500,00
	Sink Waste	Franko Basket Strainer	90mm basket strainer plug	2	Plumbink		R0,00
	Waste Trap	Franko Spaz F2	Spaz F2 plumbing kit for double bowl sink, grey	1	Plumbink	R169,00	R169,00
MASTER EN-SUITE							
Image:	Item:	Name:	Description:	Qty:	Supplier:	Price per unit (inc. VAT):	Total Price (inc. VAT):
	Basin	530 Round Basin	400(D) x 125(H) mm round counter mounted basin, matte white	2	Flush	R3 927,54	R7 855,08
	Basin Mixer & Spout	Bulide Neo Stainless Steel Concealed Bath Mixer with Spout	220mm wall mounted concealed mixer plate with 205mm spout, brushed stainless steel	2	CP&B	R2 600,00	R5 200,00
	Pop-Up Waste	Bulide Clicker Waste	Unibolt, domed, brushed stainless steel 32mm	2	CP&B	R299,00	R598,00
	Bottle Trap	Wirquin Neo Bottle Trap	50mm seal 32x40 x 4050mm tagged white	2	Plumbink	R169,00	R338,00
	Shower Arm	Bulide Neo Stainless Steel Shower Arm	Brushed stainless steel 400mm arm	1	CP&B	R630,00	R630,00
	Shower Rose	Bulide Neo Stainless Steel Shower Rose	Brushed stainless steel 250mm round shower rose	1	CP&B	R1 000,00	R1 000,00
	Shower Mixer	Bulide Neo Stainless Steel Concealed Mixer	Brushed stainless steel concealed wall mixer with concealed plate	1	CP&B	R1 000,00	R1 000,00
	Shower Channel	Gebert CleanLine60 Channel	40x700mm shower channel with removable comb insert, brushed stainless steel finish	1	Flush	R9 976,03	R9 976,03
	Shower Waste	Gebert CleanLine60 Concealed Floor Waste	Gebert CleanLine60 Concealed Floor Waste (included as part of Shower Channel)	1	Flush		R0,00
	Toilet	Isvea Colorisva Wall Hung Toilet	530x360mm wall mounted toilet pan with soft close seat, matt white	1	Flush	R9 577,96	R9 577,96
	Actuator Plate	Gebert Sigma 20	164x248mm Gebert Sigma 20 actuator plate, brushed and polished stainless steel	1	Flush	R3 056,47	R3 056,47
	Concealed System	Gebert Sigma KombiKit	Gebert KombiKit for wall hung toilet, with Sigma concealed cistern	1	Flush	R4 220,50	R4 220,50
DRESSING ROOM							
Image:	Item:	Name:	Description:	Qty:	Supplier:	Price per unit (inc. VAT):	Total Price (inc. VAT):
	NA	NA	NA				

THE SPENCER: LIGHTING SCHEDULE							
KITCHEN							
Image:	Category:	Name:	Description:	Qty:	Supplier:	Price per unit (ex. VAT):	Total Price (ex. VAT):
	Internal Downlight	2223 Anti-Glare Downlight (Spazio)	Die-cast aluminium downlight, anti-glare in colour Metal	4	Spazio	R152,00	R608,00
	LED Strip Light (Interior & Exterior)	Neonflex Back Bending (Spazio) TBC by specialist.	5 Meter LED with silicone and FPC 24V Constant voltage driver. Can span 10m double ended.	1	Spazio	R1 220,00	R1 220,00
	Task Light	Amico (Spazio)	Up & down light with aluminium body and opal polycarbonate diffuser, white, 18.5x80x150mm	1	Spazio	3518	R3 518,00
MASTER EN-SUITE							
Image:	Category:	Name:	Description:	Qty:	Supplier:	Price per unit (ex. VAT):	Total Price (ex. VAT):
	Internal Downlight	2223 Anti-Glare Downlight (Spazio)	Die-cast aluminium downlight, anti-glare in colour Metal	7	Spazio	R152,00	R1 064,00
	Interior Wall Light	Opal Sphere (Spazio)	250mm diameter wall mounted light with white acrylic sphere on black acrylic mounting ring	2	Spazio	R342,00	R684,00
DRESSING ROOM							
Image:	Category:	Name:	Description:	Qty:	Supplier:	Price per unit (ex. VAT):	Total Price (ex. VAT):
	Internal Downlight	2223 Anti-Glare Downlight (Spazio)	Die-cast aluminium downlight, anti-glare in colour Metal	4	Spazio	R152,00	R608,00
	Pendant 01 (Dresser Table)	Plat Pendant by Contain (imported from 1st Dibs)	400mm diameter glass disc shade in green on brown chord	1	1st Dibs	POA	R0,00
	LED Strip Light (Interior - Shoe Storage)	Neonflex Back Bending (Spazio) TBC by specialist.	6 Meter LED with silicone and FPC 24V Constant voltage driver. Can span 10m double ended.	2	Spazio	R1 220,00	R2 440,00
THE SPENCER: HARDWARE SCHEDULE							
KITCHEN, MASTER EN-SUITE, & DRESSING ROOM EACH							
Image:	Category:	Name:	Description:	Qty:	Supplier:	Price per unit (ex. VAT):	Total Price (ex. VAT):
	Tip-On for Doors	Blum Tip-On for Doors	Push-to-open mechanism for doors as per joiner specifications	TBC	blum		
	Tip-On for Drawers	Blum Tip-On for Drawers	Push-to-open mechanism for drawers as per joiner specifications	TBC	blum		





atlantic
studios

CLIENT | Atlantic Film Studios

LOCATION | 7 Montague Drive, Montague Gardens, Cape Town

CONCEPT

In order to redesign the existing canteen, crew and cast lounges and green rooms for this cutting edge film and television studio, my main idea was to create quiet and comfortable spaces to work, rehearse, and even wind down in during long days on set and behind the scenes. I was inspired by the film and TV industry itself and pay homage to this by use of graphic wallpapers in the form of large scale camera and signal test cards, and the open space planning that can be moved around to become multi functional spaces as required, as if they were movable sets themselves.



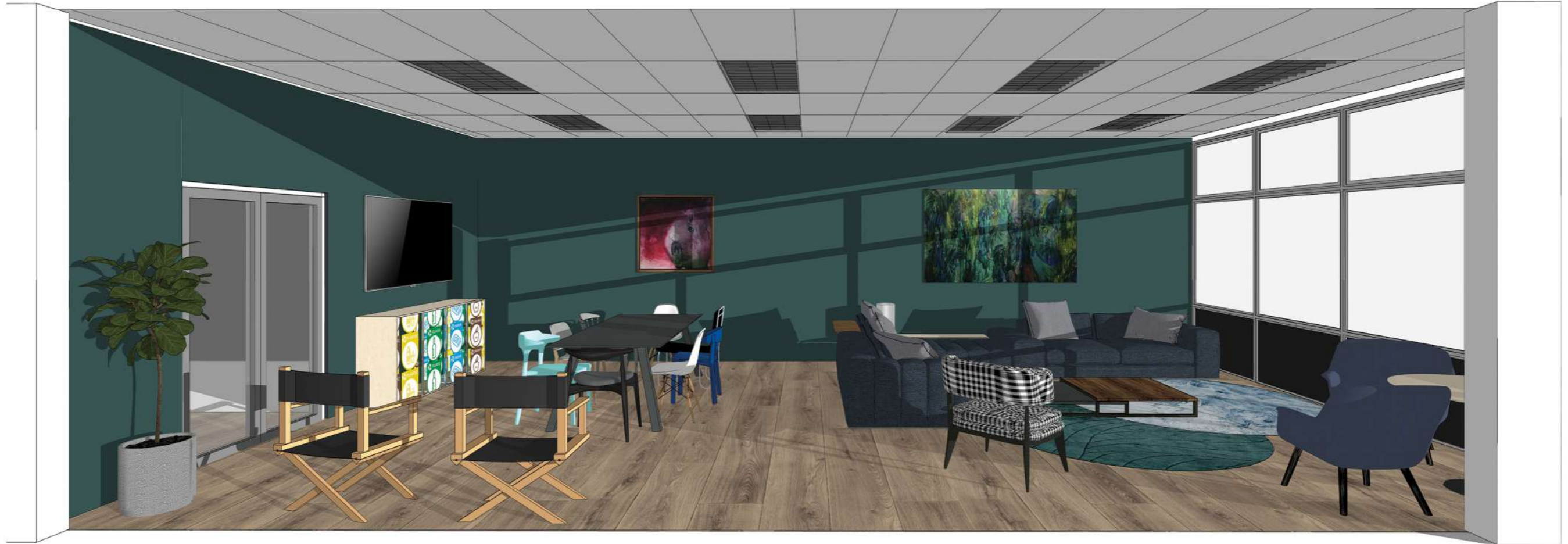
plan view of general first floor layout



plan view of crew greenroom



elevation | general lounge. canteen & cast greenroom



cast greenroom



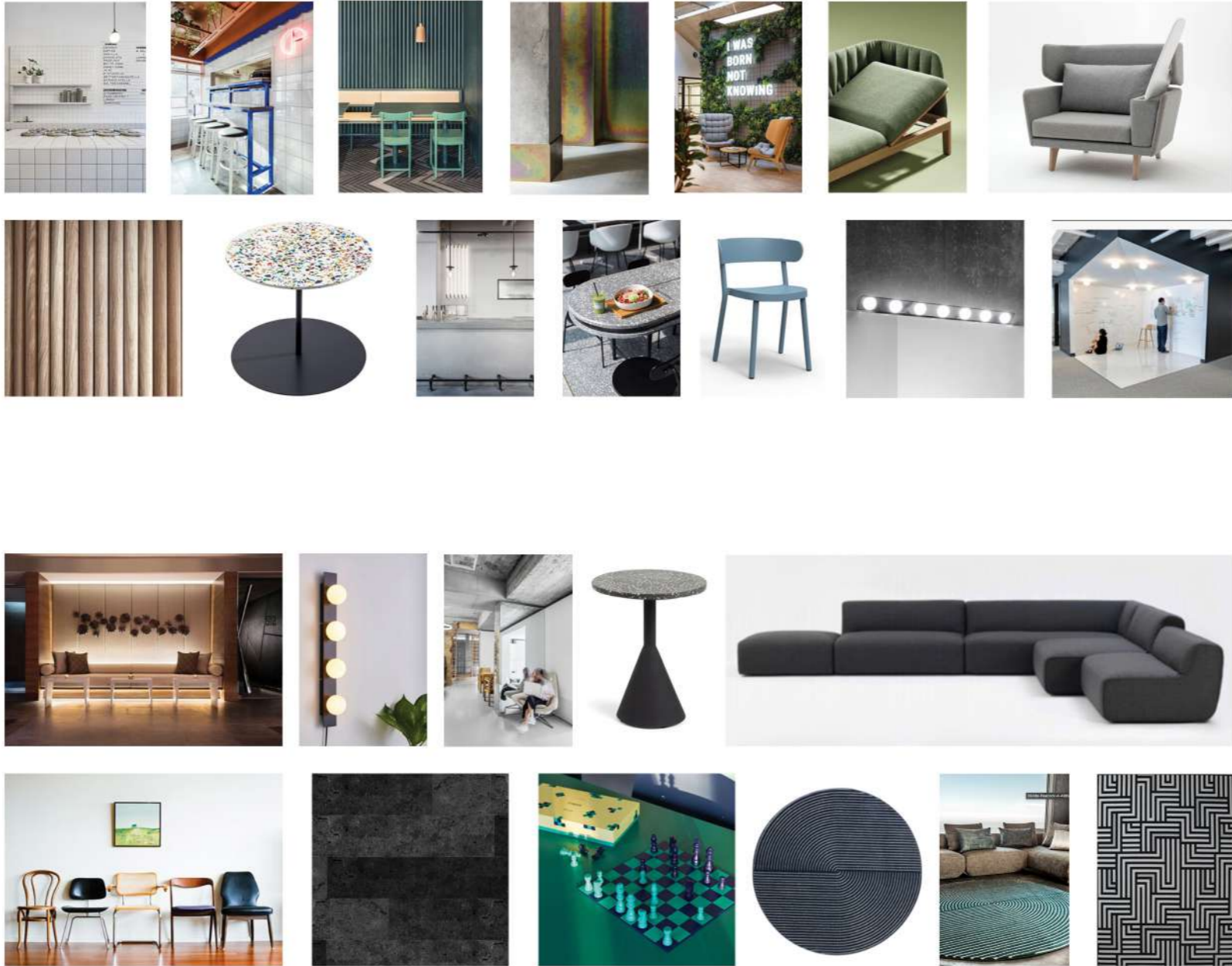
crew greenroom



general lounge & meeting area



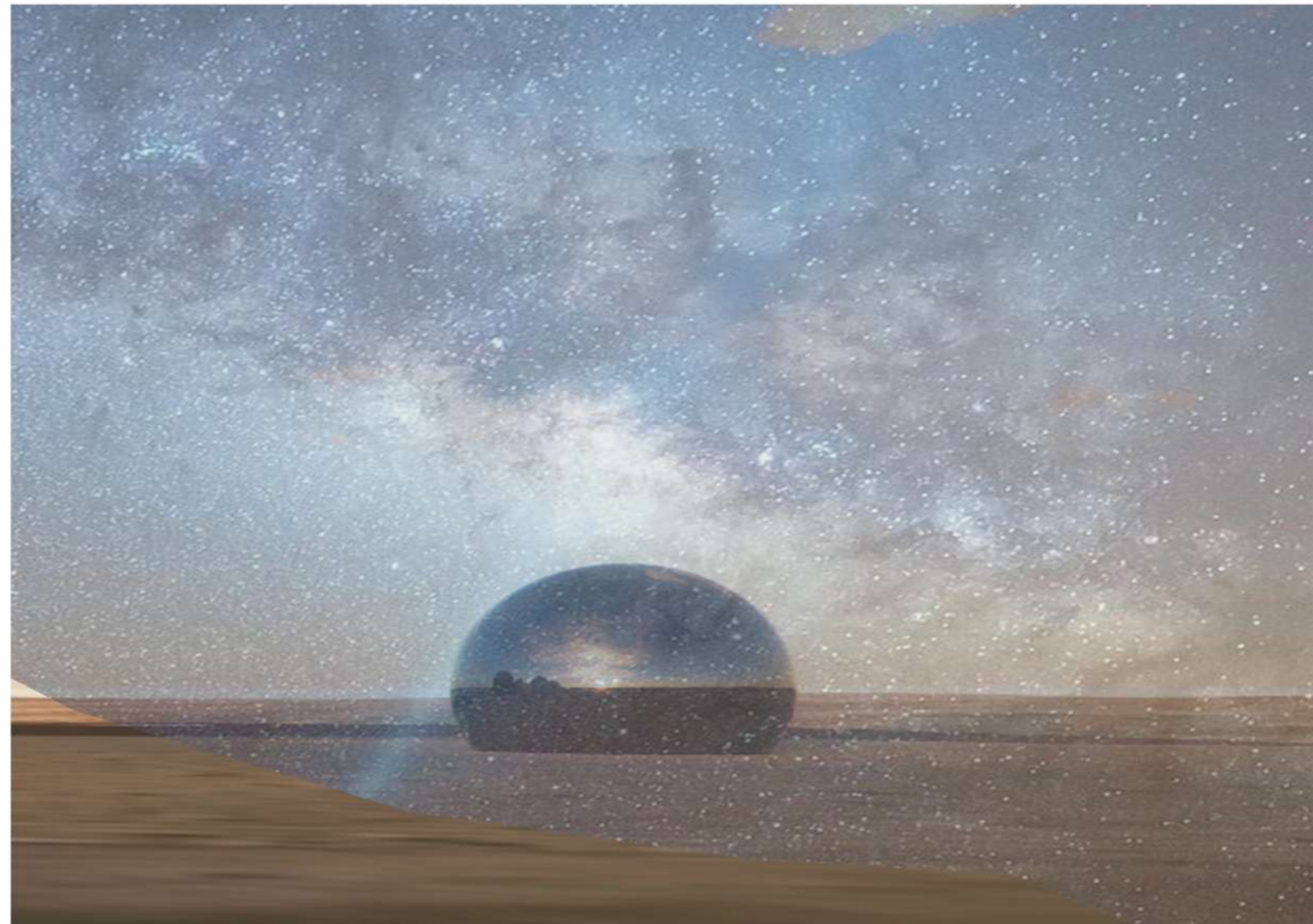
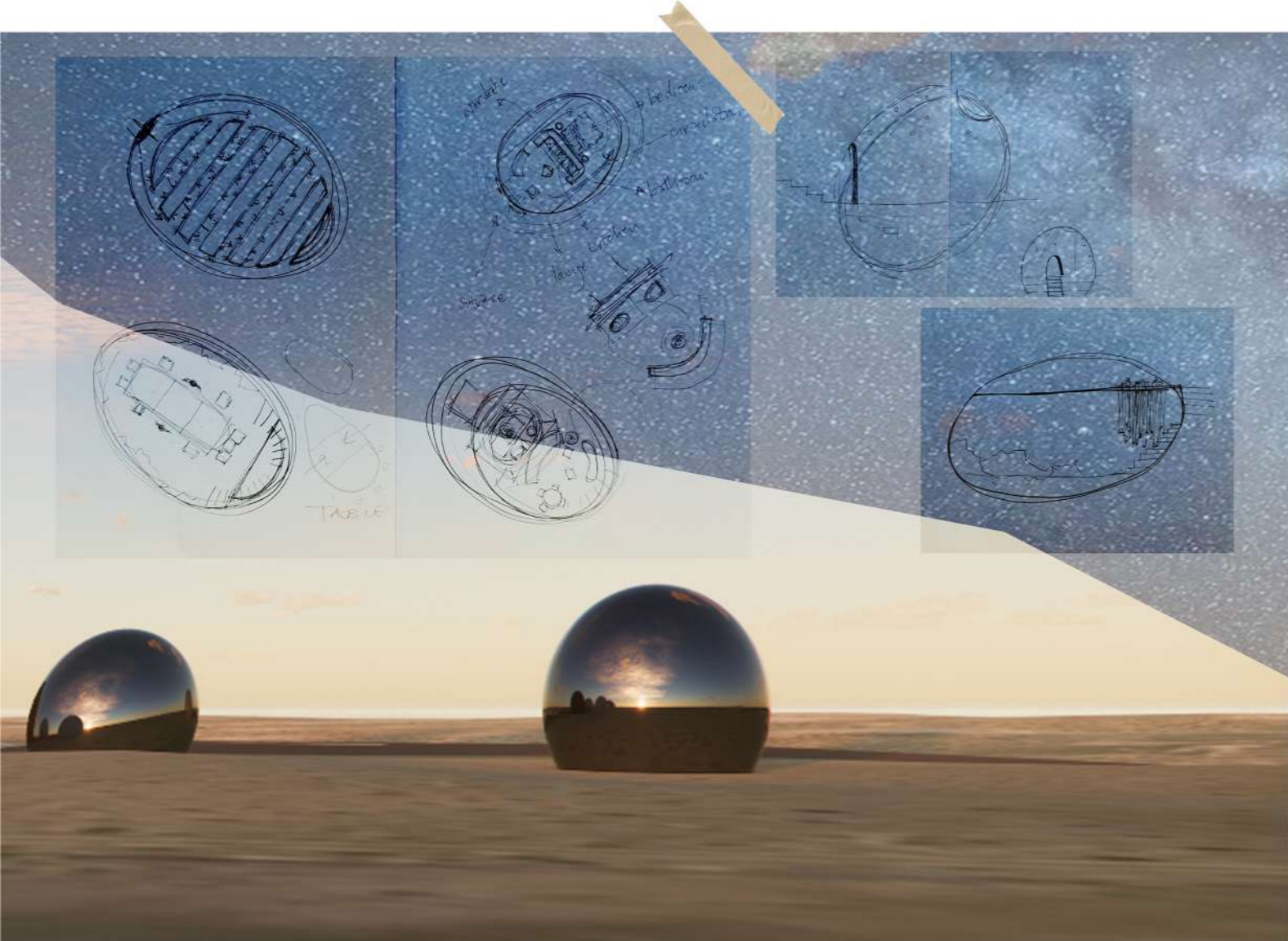
axo of crew greenroom



design research & inspiration



15XONEIGHT






mural

CLIENT | Cape Looms by Justin van Breda
LOCATION | 100 Voortrekker Road, Salt River, Cape Town

CONCEPT

Titled 'Klein Karoo'. I was inspired by the story of the Breda-family sheep as well as my own roots in farms in the Eastern Cape. I looked towards the vast landscapes of the Klein Karoo for inspiration. The warmth and spirit of its people, the resilience of the livestock, and the way in which the magic of the Karoo can humble us and bring us back to peace again. I chose to create a handsketched artwork as an homage to heritage, to the animals that give their wool, to the hands that weave the fibres into life, and to the very soul of the industry - the Karoo itself.

There is a thread between humans and nature, past and future, weaver and loom and animal.. and the thread running through my mural serves to depict this connection.





product &
surface design



MATERIALS + FITTINGS + COMPONENTS | CABLE: SOLID FABRIC CABLE IN "COPPER" (HOI P'LOY) / FRAME: BENT COPPER TUBING, COPPER TS + COPPER STOP ENDS (AVAILABLE FROM MOST PLUMBING SUPPLIERS) / LAMP HOLDERS: E27 METAL LAMP HOLDER KIT WITH DOUBLE RING NUT IN "ULTRAVIOLET" (CREATIVE CABLES) / LAMPS: OSRAM VINTAGE 1906 LAMP, 4W 2200K LED E27 G125, CLEAR FILAMENT, WARM (NEWPORT LIGHTING) / SUSPENSION SYSTEM: COPPER WIRE THREAD THROUGH BONDING STRAPS, SUSPENDED FROM CEILING FITTING OF SHUTTERPLY



GENIO CHANDELIER BY MERCANTO-TESTA FOR SEM



COPPER TUBING FOR PLUMBING



HOI P'LOY FABRIC CABLE IN COPPER + COPPER FITTINGS



CREATIVE CABLES E27 LAMP HOLDER IN ULTRAVIOLET



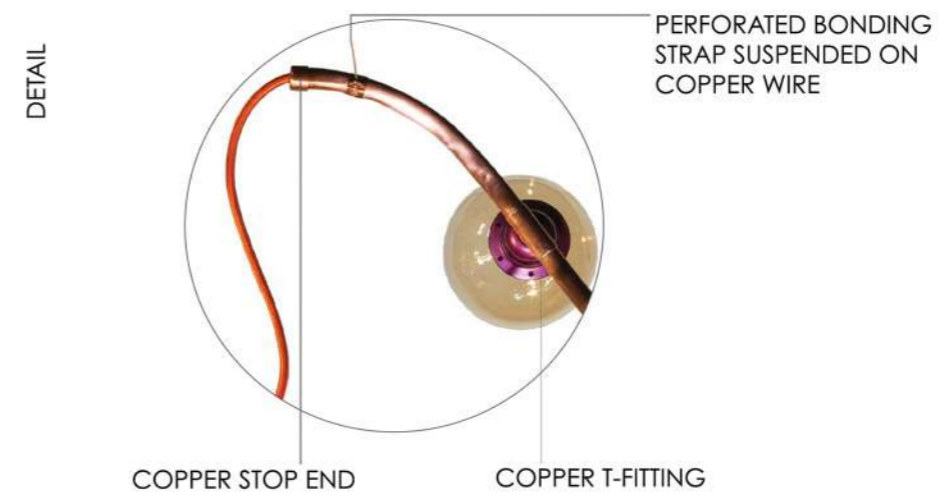
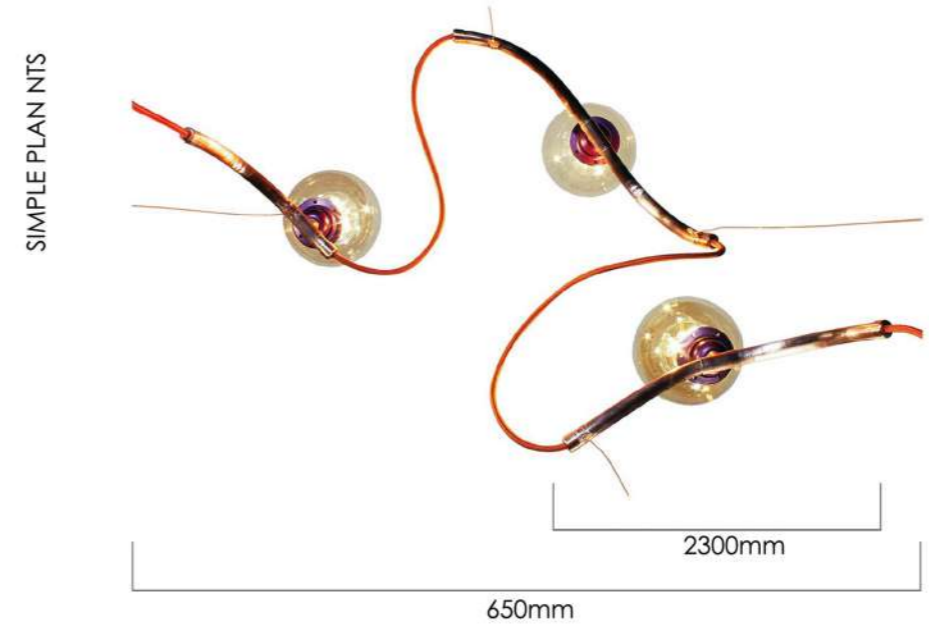
CREATIVE CABLES E27 LAMP HOLDER IN ULTRAVIOLET



OSRAM VINTAGE 1906 LAMP IN AMBER WITH WARM FILAMENT



PIPE DREAM | CONSTRUCTION ELEMENTS AND IN-SITU IMAGES



THE PIPE DREAM LIGHT IS INSPIRED BY THE GENIO CHANDELIER, DESIGNED BY MARCANTE-TESTA FOR SEM MILANO, AND BY THE FLUIDITY AND CHALLENGES OF DAILY LIFE. CELEBRATING THE FACT THAT BEAUTY CAN OFTEN BE FOUND IN THE MOST UNEXPECTED PLACES AND FORMS, THAT WHAT SEEMS LIKE A PIPE DREAM CAN ULTIMATELY BECOME REALITY, AND SHOULD SERVE TO REMIND US TO CONTINUE FLOW AND GROW AND KEEP MOVING EVER FORWARD.

PIPE DREAM | TECHNICAL FIGURES
NTS

MATERIALS



SHUTTERPLY FOR SEAT
CONSTRUCTION



PINE TIMBER FOR LEGS



RUBIO MONOCOAT WOOD OIL
PLUS 2C IN "PURE"



MILD STEEL FLAT BAR



RUST-OLEUM MATTE BLACK
SPRAYPAINT FOR METAL

REFERENCE IMAGES



SHUTTERPLY SEAT IN CHEVRON
PATTERN



BLACKENED MILD STEEL LEG
INSERTS



STEEL LEGS IN DIFFERENT
APPLICATION



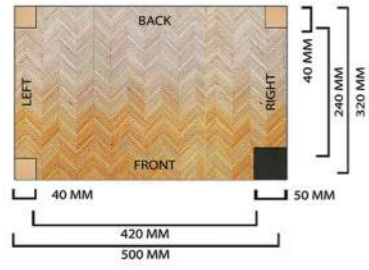
PLAN VIEW OF SEAT
DESIGN



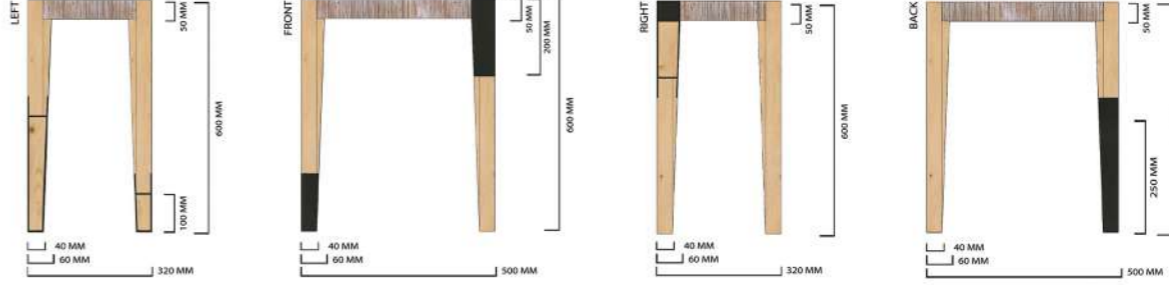
ORIGINAL WOODEN STOOL TO
UPCYCLE



PLAN



ELEVATIONS





BROKKIES TAFEL

CONCEPT

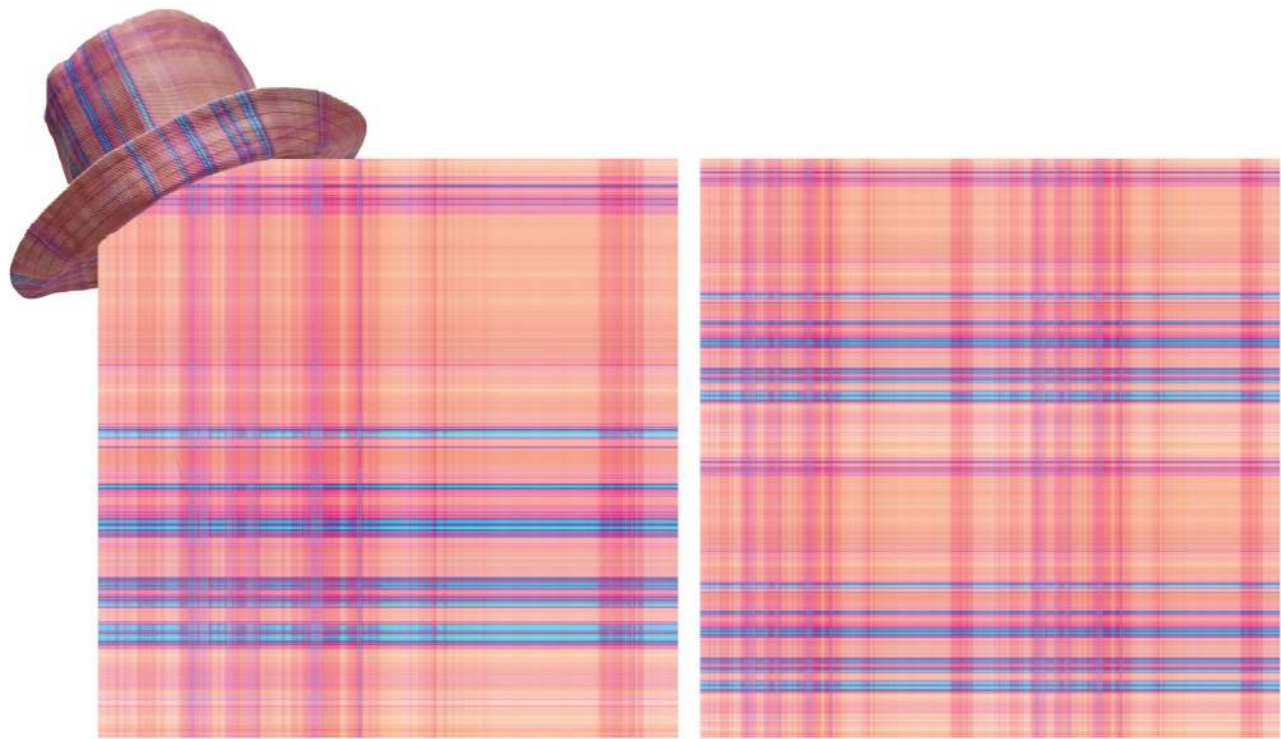
A functional and interchangeable piece of art for your garden or your home.

The 'Brokkies Tafel' (tidbits table) is a storage unit for fire logs to be used inside for firewood or in the yard next to the braai, with a nifty hidden drawer to store your firestarters and matches or a lighter.

It is made of mild steel tube with a flat plate saddle to cradle your logs. The drawer and top frame is also made of flat plate and all are finished with high heat matt black spraypaint, that will be changed for powder coating in any colour when manufactured at a larger scale.

The top holds the gem of the table - a selection of 100x100mm square tiles that can be popped out and changed at any point in time, with a groove below to let rain water run through when left outdoors. These can also be changed out for a custom fit, end-grain wooden chopping board for another practical layer of use.





TARTAN WEAVE
IMKE NINA GEHRING



TUTTI FRUTTI
IMKE NINA GEHRING



DELFT
IMKE NINA GEHRING




GIVE IT WINGS
IMKE NINA GEHRING

photography









"design is thinking made visible"
- saul bass

