

Design is not only a creative adventure. It is an obligation to one's self and to society as a whole.



HELLO! My name is Alice and I'm thrilled that you've stumbled across my work. The following portfolio will take you on a journey through my past interior design projects. I pride myself in creating a diverse range of work and exploring multiple design styles. I hope that you enjoy what you see.

CONTENTS.

01.
FERNWOOD ESTATE | HOUSE BENNETT

02.
BOXED | THE ARTISAN APARTMENT

03
PG BISON | A DESSERT OASIS

04.
CABIN LUNA VISTA FOR STAY UNIQUE

05.
BARNET FAIR BARBERSHOP

06.
CLUB METAVERSE

07.
APARTMENT ON Q

08.
PRODUCT DESIGN | VESSEL

09.
PRODUCT DESIGN | LIGHTING

10.
TECHNICAL DRAWINGS

01.
FERNWOOD PRIVATE ESTATE | HOUSE BENNETT

Final exam project placed top 3



GAZING OVER THE LAGOON

Design Time has been approached by Mark Bennett from Knysna. He has recently bought a plot in Fernwood Private Estate (<https://fernwood-knysna.co.za/>) and has asked you to design his new home. Your task is to design both the exterior and interior of the clients new home, prioritising an indoor outdoor design while keeping the architectural guidelines of the estate and the client's preferred look and feel in mind.



My design concept for this project focussed on two main aspects. The first being the beautiful Knysna landscape and the second, the clients love for socialising and indoor-outdoor living. The outdoor area boasts a swimming pool with rhinowood decking and a built in fireplace clad in Cape quartz endemic to the area.



GROUND FLOOR PLAN NTS.



Designing the exterior and structure of the home meant taking into account the Fernwood architectural guidelines, the clients needs as well as the interior layout and my own creativity. I positioned the outside areas according to view points, wind directions and human flow.

The ground floor interior explores a marriage of modern elegance and classic comfort. It is an open plan space that is highly conducive to entertaining as per the clients needs. When the exterior stacking glass doors are open the interior and exterior spaces flow into one another allowing for an effortless indoor-outdoor experience



Dining furniture.



Lounge sofa

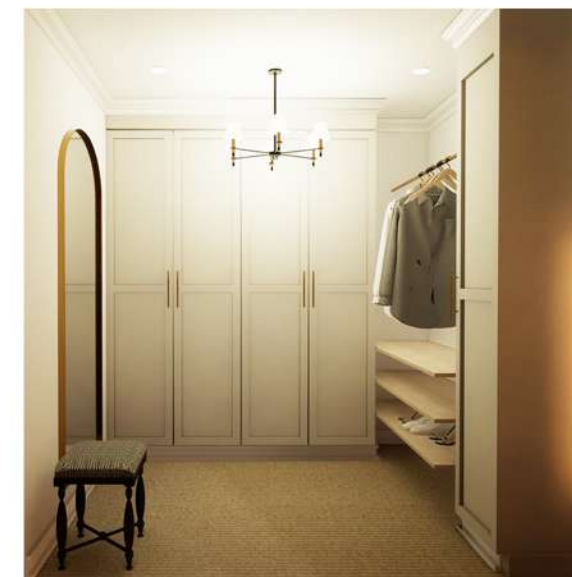


Patio furniture.

The upstairs master en-suite bedroom features paired back interior with a collection of textures and materials making up custom side tables and headboard to allow for a tranquil yet unique design. The bedroom features a spacious and well lit walk-in closet and leads onto a balcony taking in the Knysna views. The bathroom is lathered in eazie quartz pewter phoenix stone with a custom vanity and double shower.



UPSTAIRS FLOOR PLAN NTS.





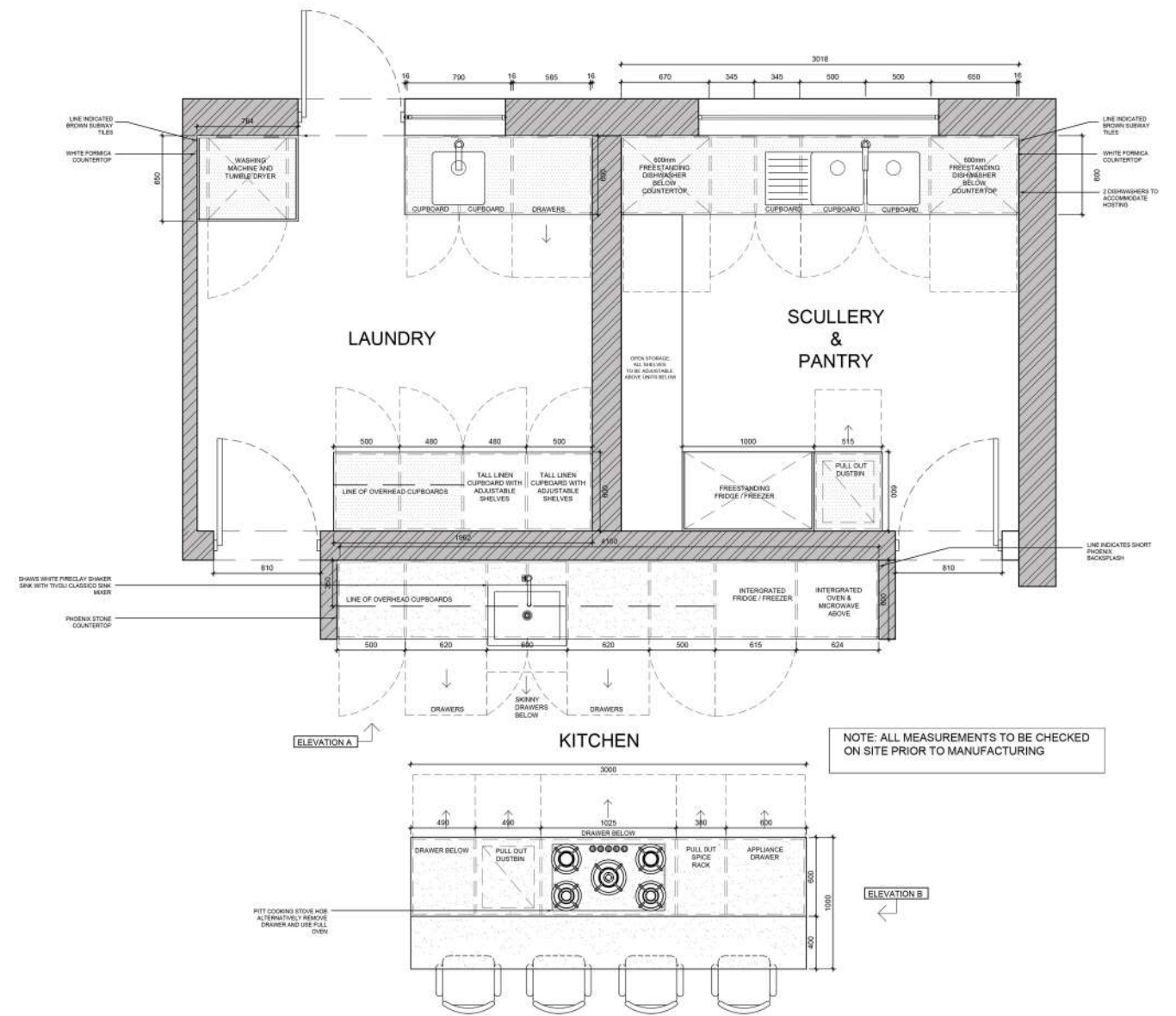
Bedroom furniture.



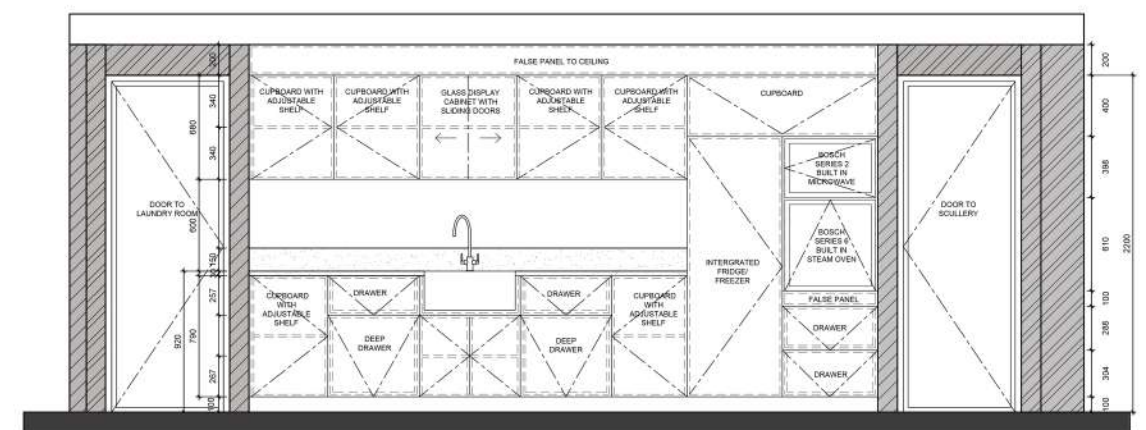
Bathroom accessories



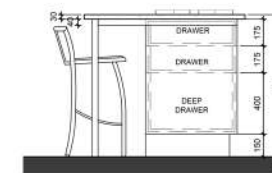
The kitchen brings in the outdoors through its cabinetry which is duco sprayed in Olive Wash by Dulux. A timber veneer island allows for the client to cook while interacting with the outdoor landscape. The counter tops are eazie quartz phoenix stone in bianco bronze, drawing warmth to the space.



HOUSE BENNETT KITCHEN, SCULLERY & LAUNDRY ROOM PLAN NTS



KITCHEN ELEVATION A NTS



KITCHEN ELEVATION B NTS

NOTE: ALL MEASUREMENTS TO BE CHECKED ON SITE PRIOR TO MANUFACTURING

NOTE: All DRAWER HANDLES-SKU: 09786ABR Antique handle by Handles inc
ALL CLIPBOARD HANDLES-SKU: 09094BBR oval knob handle by Handles inc



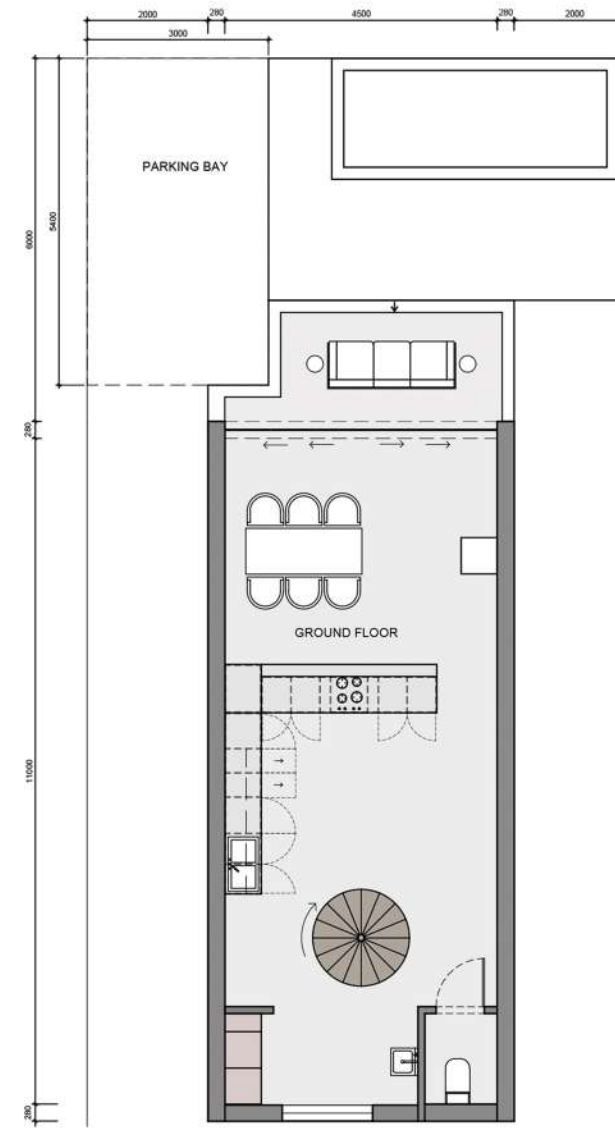
02.
BOXED | THE ARTISAN APARTMENT



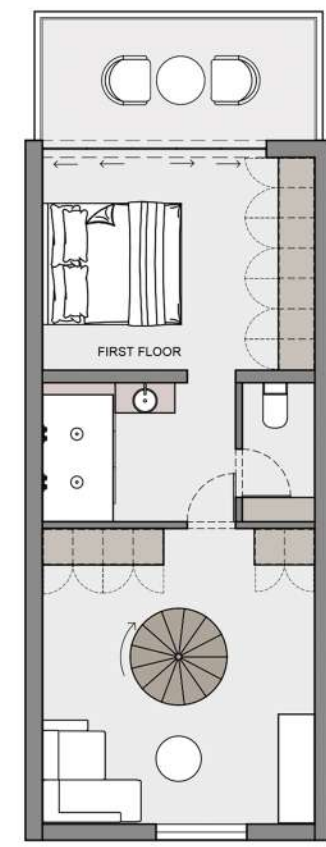


Choose a site in the Cape Town City bowl. You have the option to position your building between two existing buildings or you can demolish an existing structure to make space for your building on a specific site. The property is characterized by its elongated and narrow shape, with its entrance located at the shorter end facing the street. Please specify your chosen address on your submission. You have the freedom to design the space with any chosen style keeping in mind resale value.

FLOOR PLANS
NTS.



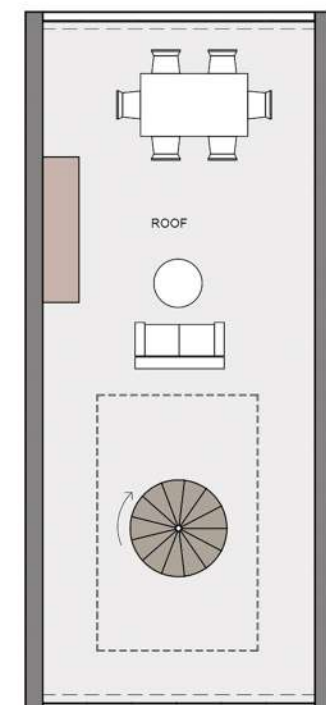
GROUND FLOOR



FIRST FLOOR



SECOND FLOOR



ROOFTOP



The dining room converges with the kitchen in an open plan layout. Black timber flooring is used throughout the apartment which is complemented by white wall panelling and pops of green. A custom built in bar faces the dining room ready for guests to make use of it during meals.



The kitchen takes inspiration from contrasts of warm and cold. A cold stainless steel clads the island structure and a warm, rich oak veneer clads the cabinetry and wine storage. This mixture of materials sets the tone for the entire apartment. I deliberately wanted to use materials that are not commonly seen together to create interest and maintain a strong sense of uniqueness.



I decided to design a spiral staircase for the space for two reasons. The first being that it ended up saving some space and creating a more seamless flow as opposed to a traditional staircase. The second reason was that I wanted the staircase to be a central statement in the home and to add to the overall design rather than being simply pragmatic.



When I began the project I knew I wanted to fill the space with as much art as possible and was particularly inspired by South African artists recommended to me by a friend doing her final year at Michaelis School of Fine Art. This was done as a gentle nod to the beauty of South Africa and the country's creative community. I've featured works from artists Shine Shiva and Mia Chaplin among others.



The master bedroom is designed to be welcoming, warm and fresh with subtle hints of spunky. It features two artworks, a print of "the kiss" by Gustav Klimt and "Hot Blooded" by Mia Chaplin. The art helps the room retain a kind of edgy-sensual ambience.



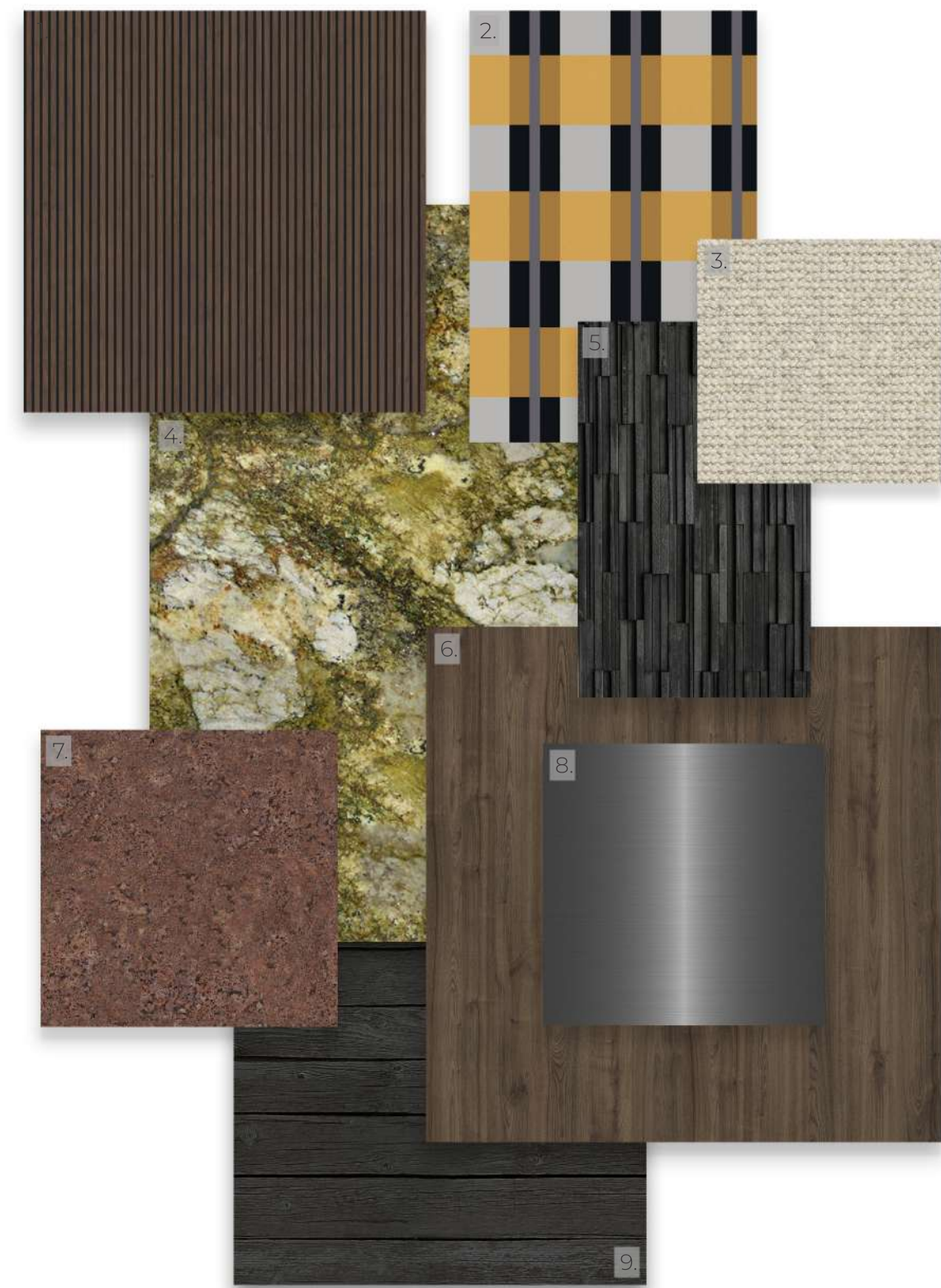
The master bathroom holds hands with its bedroom partner by drawing threads with geometric form taken from the bedroom wall paper by Lemon Papier.



The lounge and study are small spaces that needed to be able to withstand traffic, comfortable and fun. I decided to go with a striking timber veneer bordered by white panelling. Olive and red tones elevate and colour the spaces.



The guest bedroom exists with the purpose to make guests smile and be at peace and comfortable. A splash of pink and green with texture coming in through the wall plaster and headboard fabric, make the room is exciting and slightly unexpected.



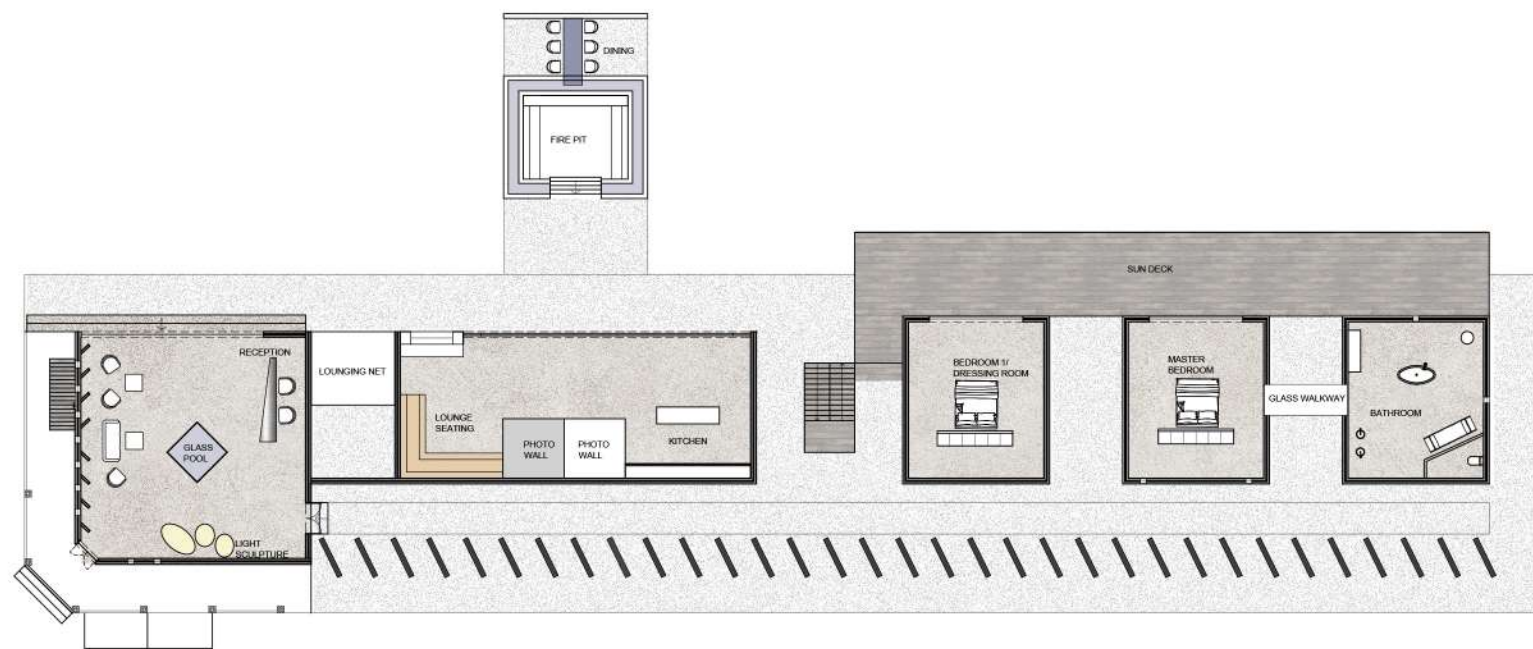
1. SLATTED OAK CLAD | 2. ME DECADE WALLPAPER IN ICEBURG SUNSHINE BY LEMON PAPIER. | 3. JUTE
 | 4. RAINFOREST GREEN MARBLE | 5. JAGGERED SLATE TILE | 6. OAK TIMBER CLAD | 7. RED MARBLE |
 8. STAINLESS STEEL | 9. BLACK OAK FLOORING

03
PG BISON | VILLA VERSUS



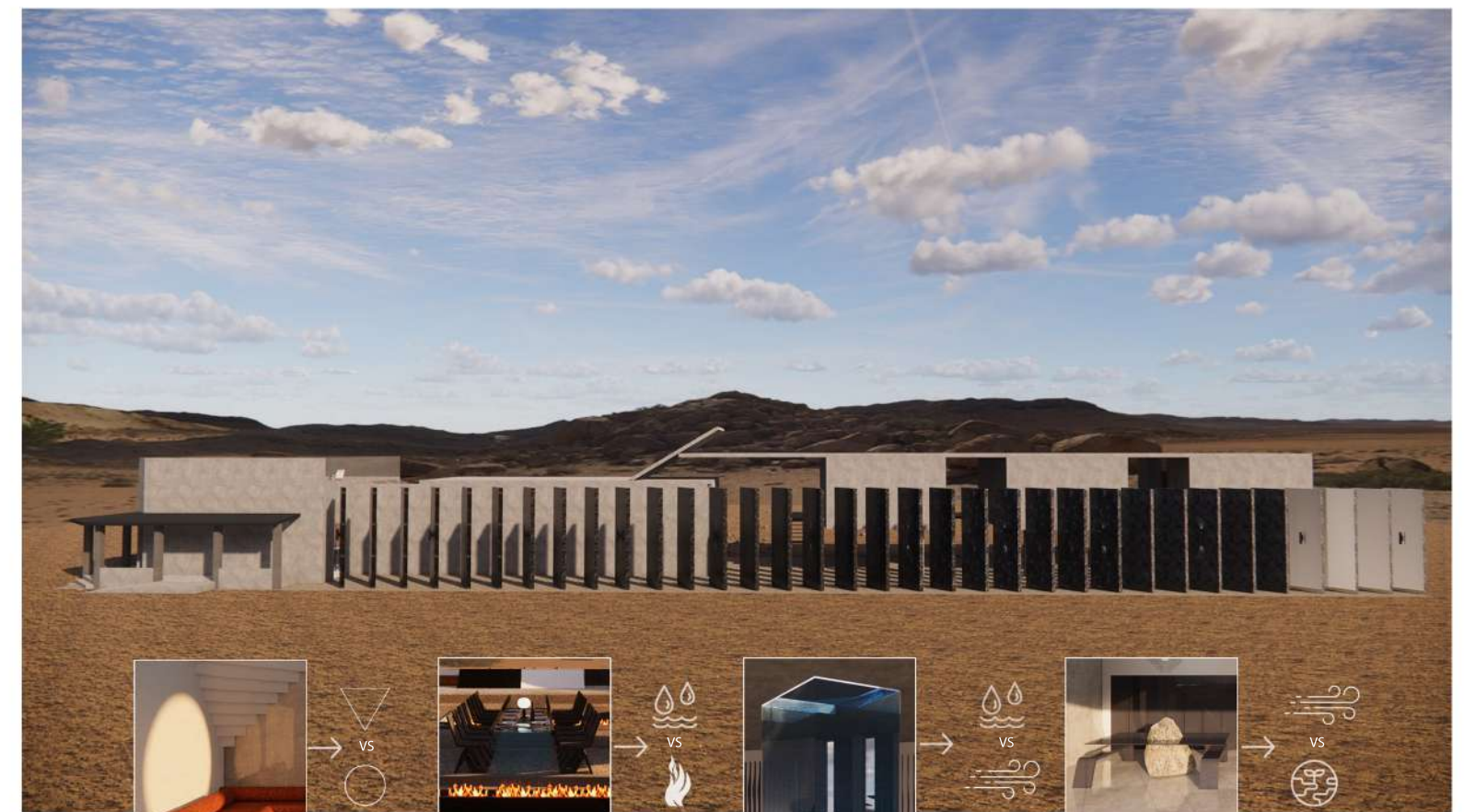
A FUSION OF DESERT CONTRAST

The heat of the desert sun is met with the chill brought by its moon in a glorious conflict. Villa Versus is born from the contrast of the climate and landscape of the Tankwa Karoo. The villa subtly yet concisely exhibits contrast accumulated in visual representations of shadow, texture, natural element and interior style to create an aesthetic and unique experience for guests and content creators. The design excludes unnecessary elements that do not add to its concept or aesthetic. Water is a large component of the design. Its uses have been carefully adjusted to the desert environment by using small surface areas and mirror mimicry. Villa versus is not only a luxury residence and content location, but an oasis as well.



PLAN NTS.

The brief says to design your clients dream desert oasis consisting of a luxury residence, with entertainment areas and landscaping. Your design Proposal must celebrate the basic humans needs of: Eating, Sleeping, Bathing and Socialising. Using the four elements: Fire, Water, Earth and Air. The design must be directed to warm social media influencers and people wanting to book out the space for content creation.



After being inspired by desert landscape contrast I decided to contrast the natural elements along side other contrasting geometries, colours and light.

The exterior facade acts as a canvas for the landscape and interior. Simple washed concrete lets the building merge into the desert.



The outdoor dining area includes a water feature dining table allowing guests to feel as though they are eating on water. This contrasts with the fire pit below. The fire pit has a water moat around it giving the illusion that the water feature dining table is pouring over the fire.



The reception area is designed to bring about excitement and interest. A variety of unusual furniture clusters encourage photo moments and a central glass pool gives the contrasting effect of water suspended in the air



The lounge area features a custom orange sofa that contrasts with the blue frame round window. This figuratively and literally sheds light on my concept of contrast. The stairs coming from the ceiling create an unexpected opposition between what is grounded and what is not.



The kitchen is fully concealed and runs on an open plan with the lounge area. A large boulder island is central to the kitchen space. To the right are two photography walls. The black and white contrast each other and give guests the option to photograph anything they desire.



The master bedroom has a custom headboard that is inspired by the moon and sun. The master bathroom features a lying down shower and fireplace with full wall mirrors which create an illusion effect.



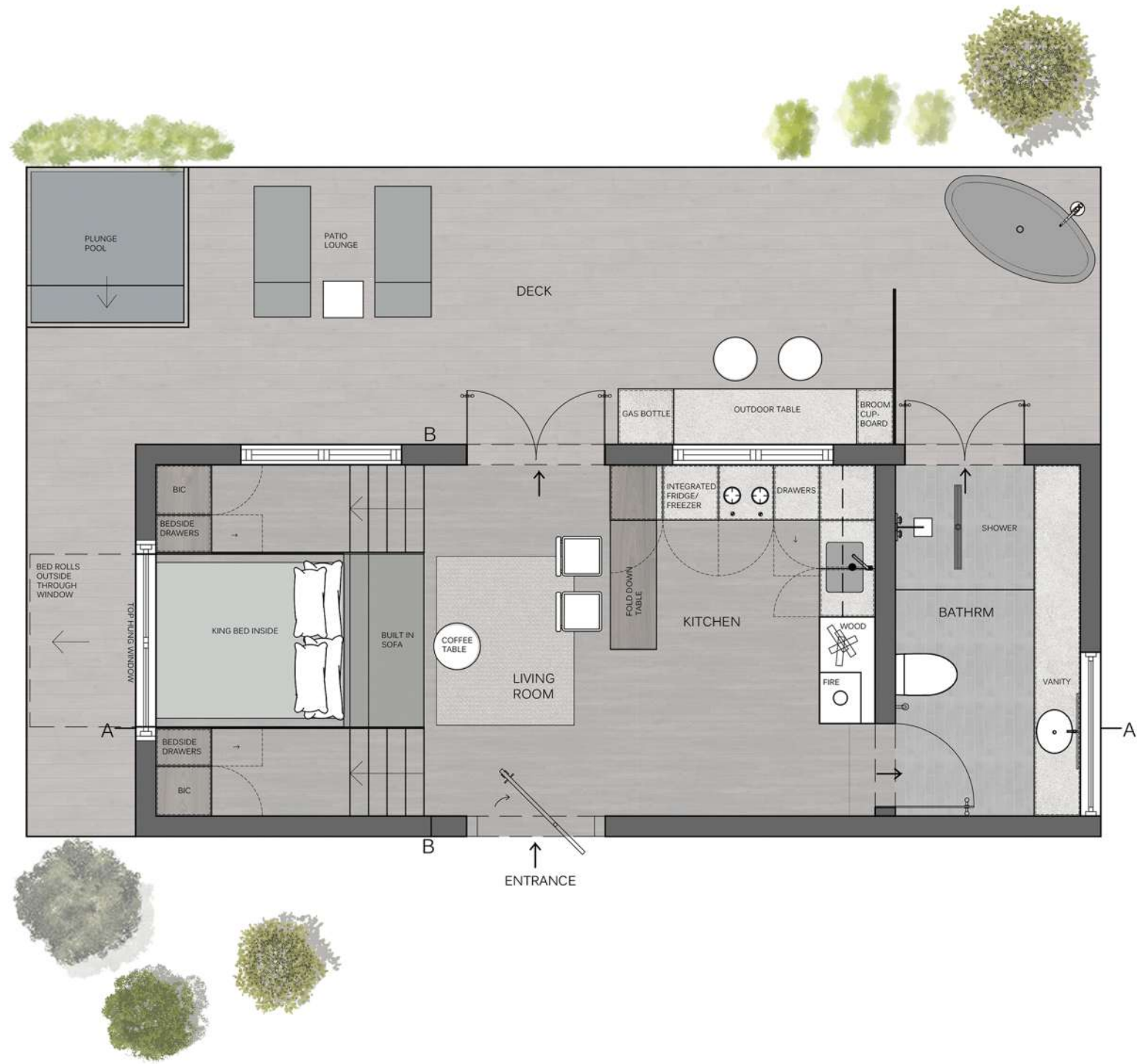
04.
STAY UNIQUE | CABIN LUNA VISTA



A HIDEOUT IN THE GROOTWINTERHOEK NATURE RESERVE

Design Time students have been given an exciting opportunity to create unique and innovative cabin design for Stay Unique. The company plans to build up to six cabins in 2023, each situated in distinct and picturesque locations within a 2.5-hour radius of Cape Town in the Western Cape. As the company looks to expand into other provinces beyond the Western Cape in 2024, they are seeking inspiration for its next four cabins. Stay Unique is currently building two cabins and eagerly anticipates the innovative designs that the Design Time students can offer.





FLOOR PLAN NTS.

The exterior facade of cabin Luna Vista is designed to blur the lines between the cabin itself and the landscape that surrounds it. Reflective glass on the entry side of the cabin reflects the environment against the dark timber structure.



Please scan to watch walkthrough video.





In response to the clients' requests to make the cabin unique and instagramable, I designed the bed to roll out on tracks and cantilver with a large window at the foot of the bed. This gives guests the opportunity to appreciate the stars at night or the breeze during the day.



The Kitchen space is carefully designed to avoid space wasting. A custom dish cupboard above the sink aids with this. Black stained timber cabinetry below works harmoniously with blonde timber cabinets above and a simple concrete ceasar-stone countertop maintains the elegance of the space. A fold up table acts as both a work and eating space or an island.



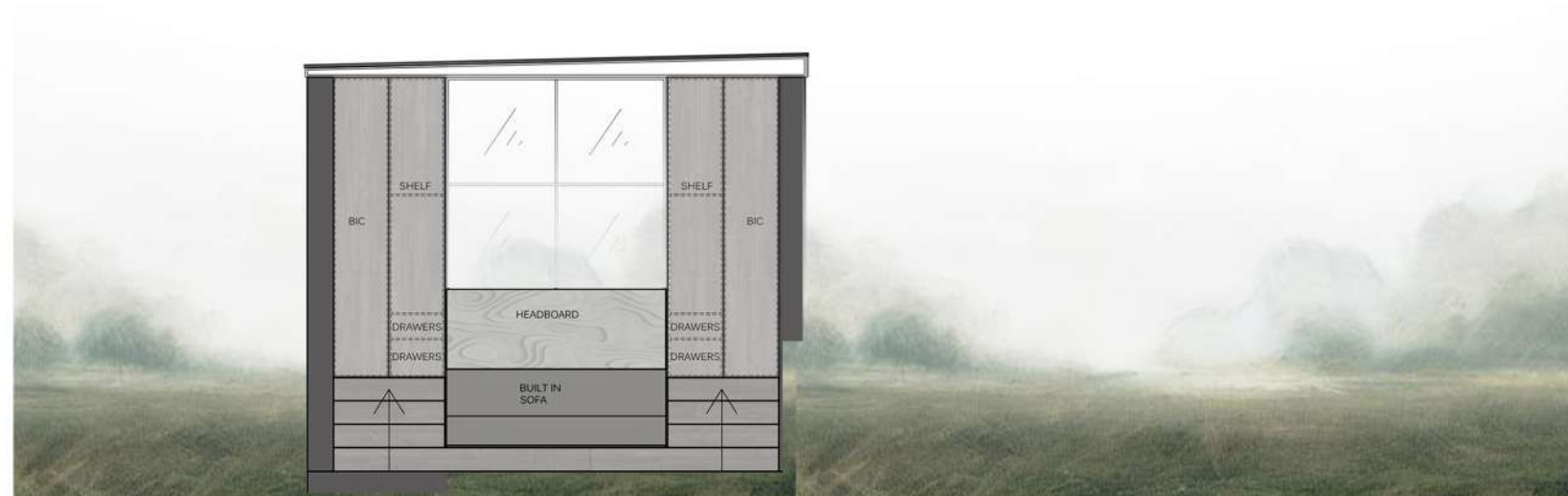
The Lounge is placed against the back of the bedroom and is pushed back along with the bed to roll the bed outside and subsequently create more lounge space. A custom cork headboard brings warmth while managing accoustics. The bathroom vanity is mounted with a large fixed window behind it to encourage guests to appreciate the view while engaging in their routines as well as bringing light in onto the face.

THE LUNA VISTA CABIN | MATERIALS

1. BREATHE IN IN OATS BY HERTEX | 2. TERANO IN FOREST BY HERTEX | 3. ANGORA IN FOREST BY HERTEX | 4. TIMBER DECKING BY OGGIE | 5. CAESARSTONE 4043 | 6. FELT BY ARCHISONIC | 7. ROWLEY & HUGHES EXTRA HEAVY JUTE | 8. BLACK MELAWOOD CABINETS | 9. TOASTY GREY BY DULUX | 10. CAESARSTONE 4033 | 11. KBAC VINYL IN ASH GREY | 12. FLUTED GLASS | 13. EXTRA DARK JAXOLEUM STAIN TIMBER | 14. COIMBRA MELAWOOD CABINETS | 15. WHITE ASH MONOCOAT TIMBER | 16. SLATE BY MAZISTA TILES |



ELEVATION A NTS.



ELEVATION B NTS.



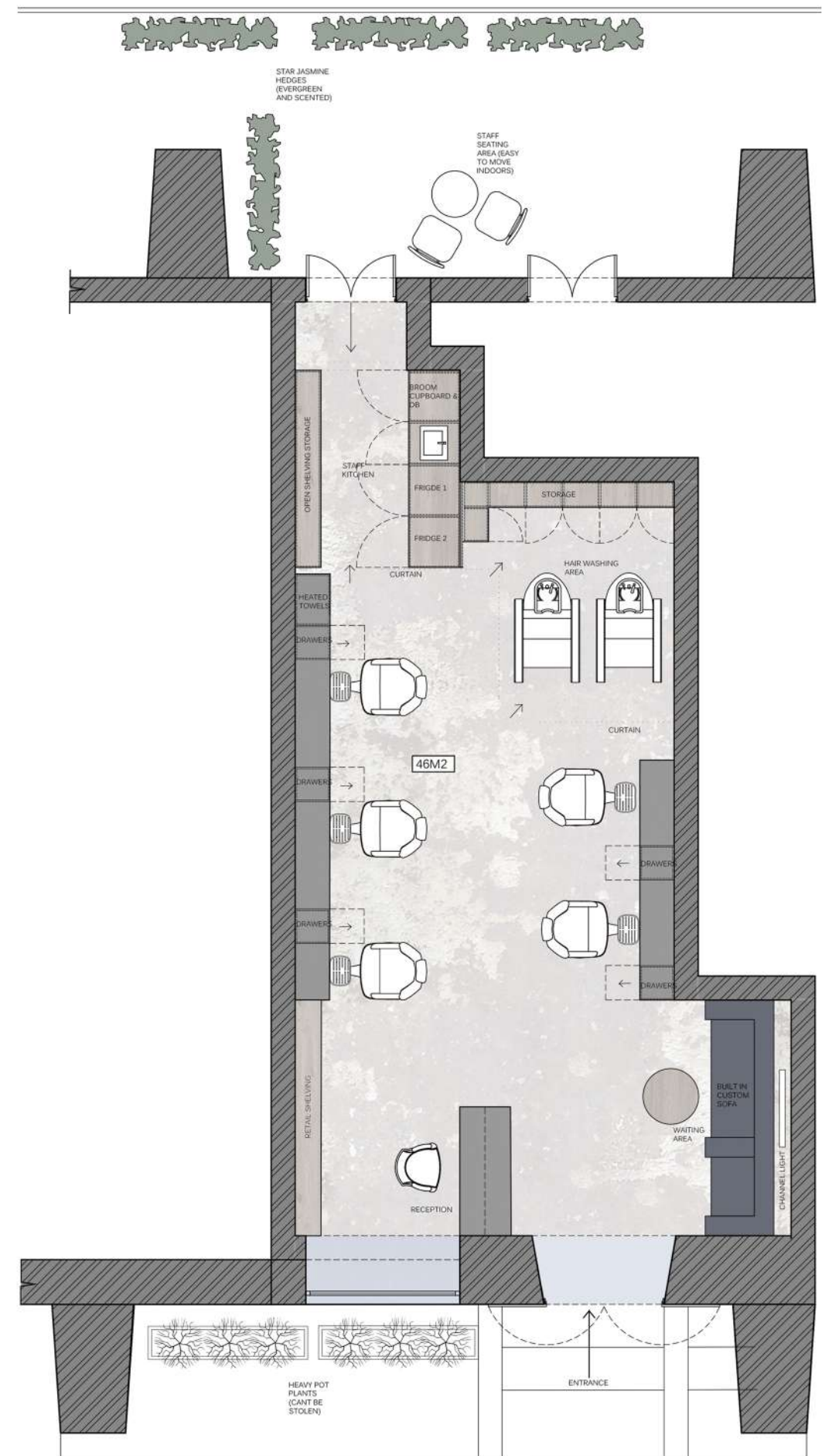
05.
BARNET FAIR BABERSHOP





The brief says: To redesign and refresh the interior space of Barnet Fair Barber-shop. To assist in repositioning and upliftment of the overall brand by redesigning the look and feel of the space. The design should be contemporary, edgy and clean while taking into account the natural elements of the space (wood, stone, etc) and should evoke a feeling of freshness and a sense of "hidden gem in the city centre". This space should not resemble any other in Cape Town, the client should naturally want to discuss the new space. The primary function should be practical-

to be in. You have been given a budget of R250000



PLAN NTS.



The redesigned Barnet Fair retains a modern, edgy feel. The complimentary colours of orange and blue pair with the stainless steel in the space. Chain mail curtains have been used for privacy in the hair washing stations and bring an interesting and unusual texture into the space.

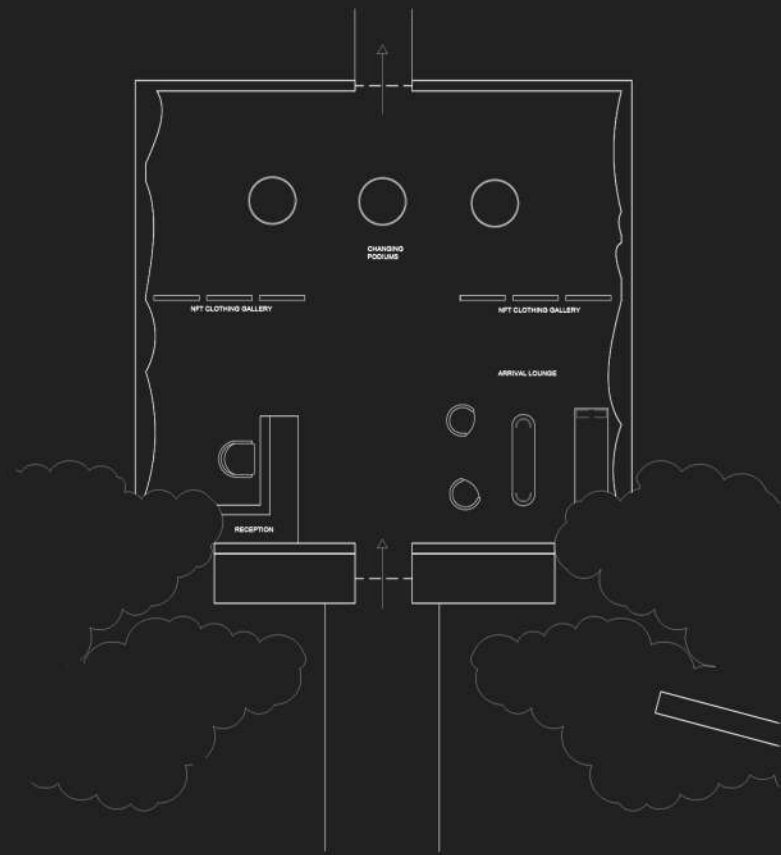


06.
CLUB METAVERSE | GROUP PROJECT - GROUP LEADER

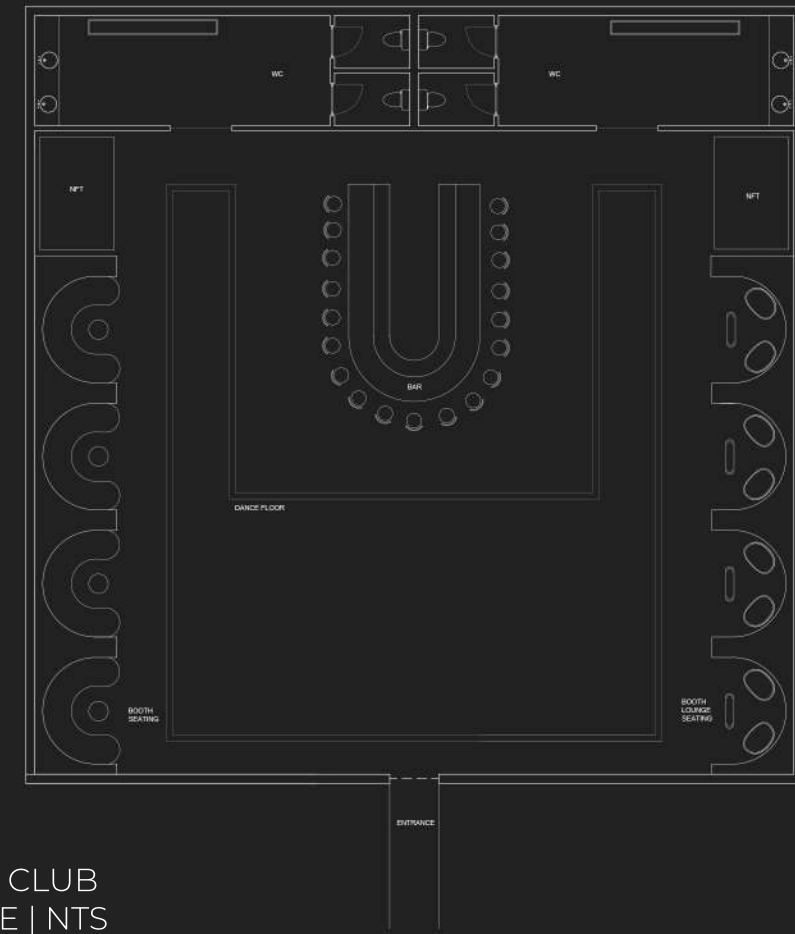


Students will collaborate in groups to design a virtual adult nightclub within the metaverse. This project challenges students to fuse traditional interior design principles with new age technology.

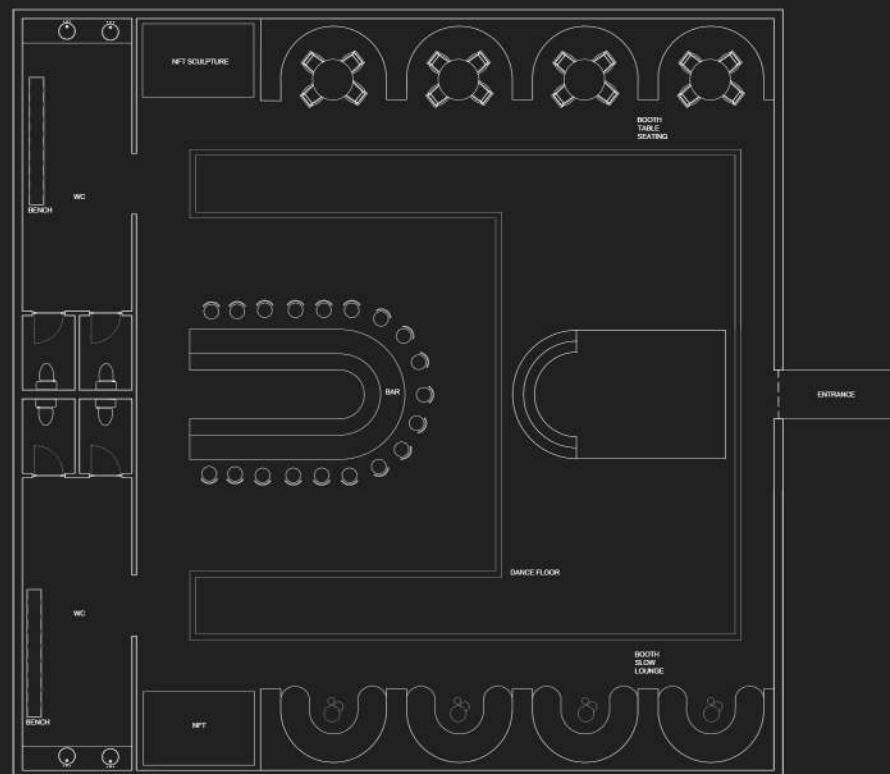
Club Time Machine takes its guest on a trip through time. Based on the shape of a clock, different pathways that act as the clocks are move from one club to another. NFT fashion items for sale which guests may wear into the experience. The entrance space follows a desert, geo style. The 40s jazz club is for lounging in a speak easy type setting including a bar, seating and a piano. The 70s space club will include a dance floor and bar with seating, all on the theme of 70s space. The main stage is the futuristic club which features a stage with hologram djs, a bar, dance floor and seating. From the entrance, each club will incorporate a walkway that is designed and tuned to its own era. Each club will feature 4 bathroom stalls.



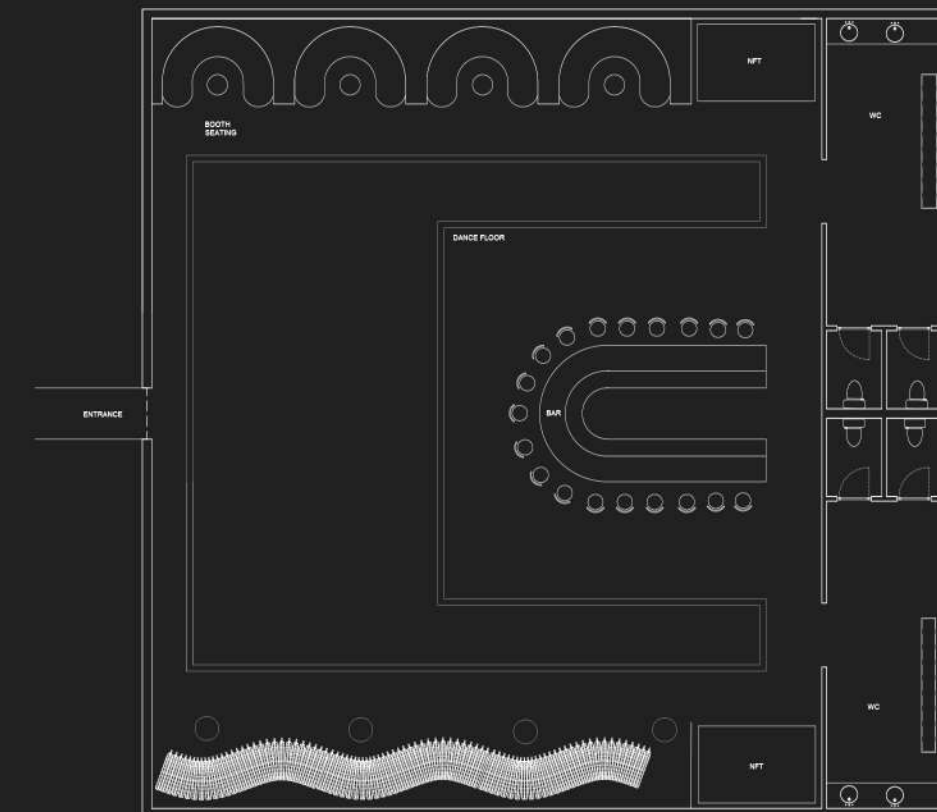
ENTRANCE FLOOR PLAN
SCALE | NTS



1970s CLUB
SCALE | NTS

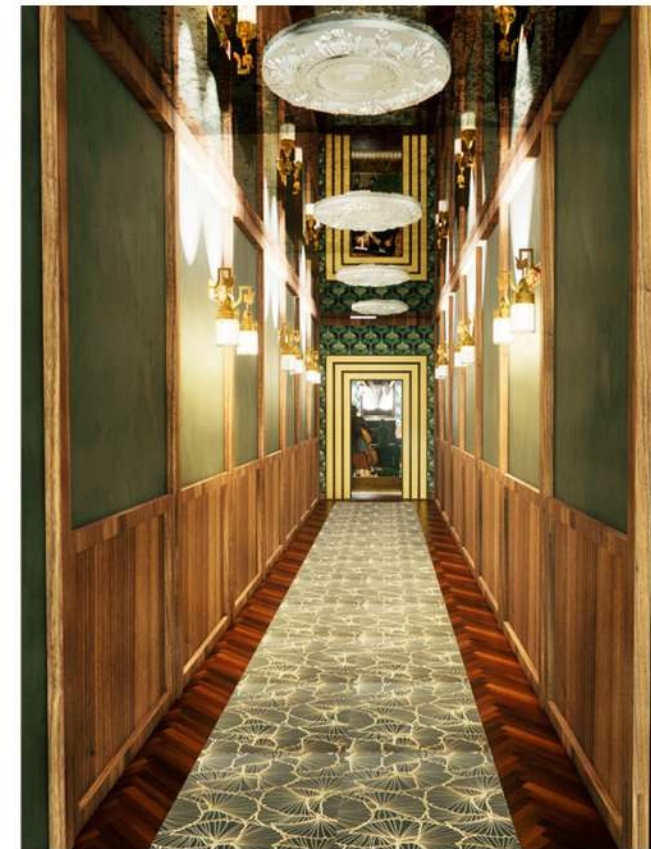


1930s CLUB FLOOR PLAN
SCALE | NTS



1970s CLUB
SCALE | NTS

The entrance of the club transports the virtual guest to a new world. Purchasable NFT outfits are on display and futuristic materials and colours encourage the metaverse feel.

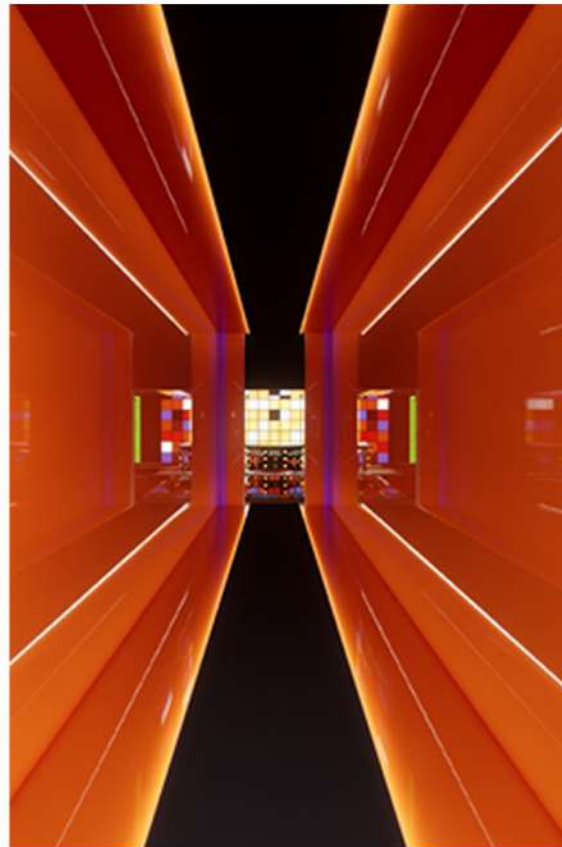


1930s CLUB

The 1930s club is where the experience begins. This space is about taking a step back in time and enjoying a traditional jazz lounge.

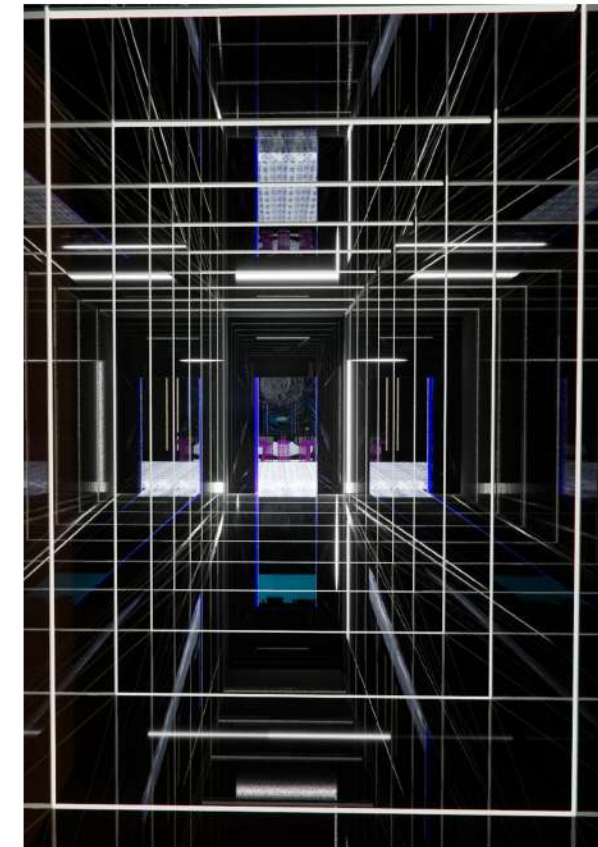


PLEASE SCAN TO WATCH WALKTHROUGH VIDEO.



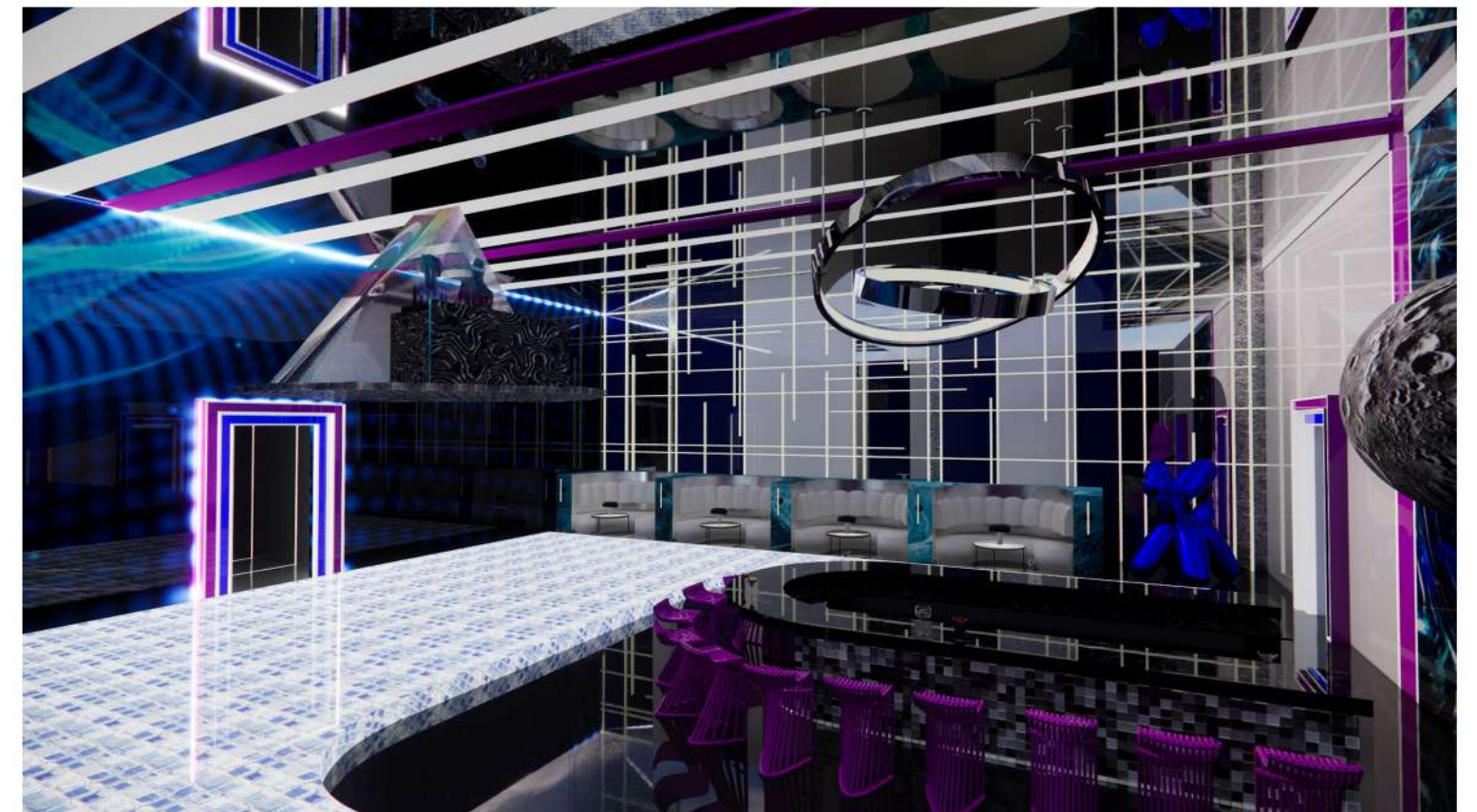
1970s CLUB

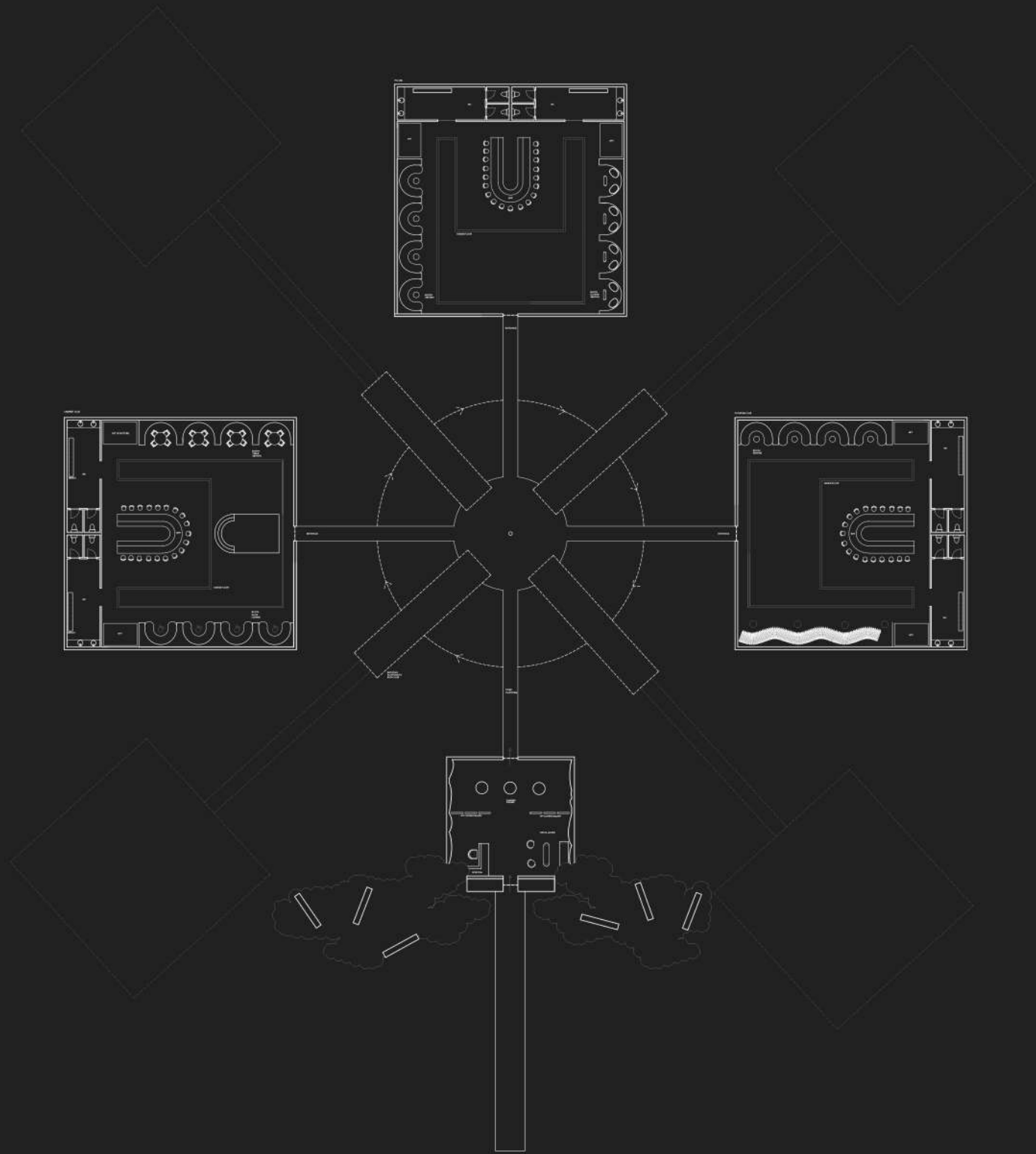
The 1970s club is about fun and out there design. Geometric shapes and complimentary colours make this space.



FUTURISTIC CLUB

The future club is bold and full of illusion. Mirrors and high gloss finishes create an almost dreamlike space.





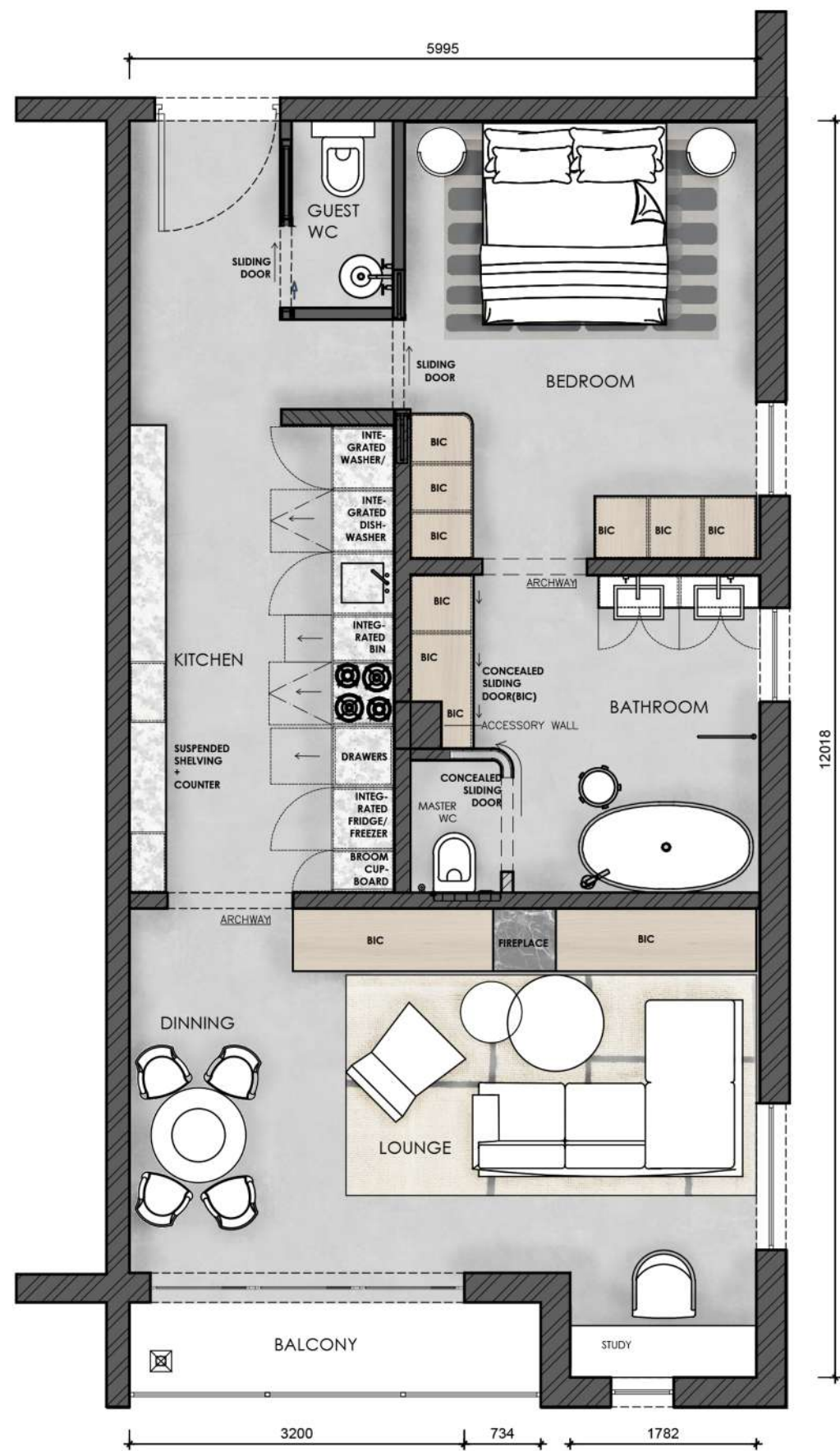
SITE PLAN
SCALE | NTS

07.
ON Q | APARTMENT 602



THE CONCEPTUAL BRIEF AS FOLLOWS: CUBE Developers are looking for 3 beautifully designed and curated 'show apartments' in order for clients to select their chosen model for purchase. Your task is to design ONE of three 'show apartments'. Research the following interior design aesthetics and select one style. This aesthetic will govern your interior scheme broadly and must be carefully considered when designing your kitchen, bathroom, and cabinetry detail.

1. CLASSICAL 2. CONTEMPORARY 3. MINIMALIST



FLOOR PLAN NTS.



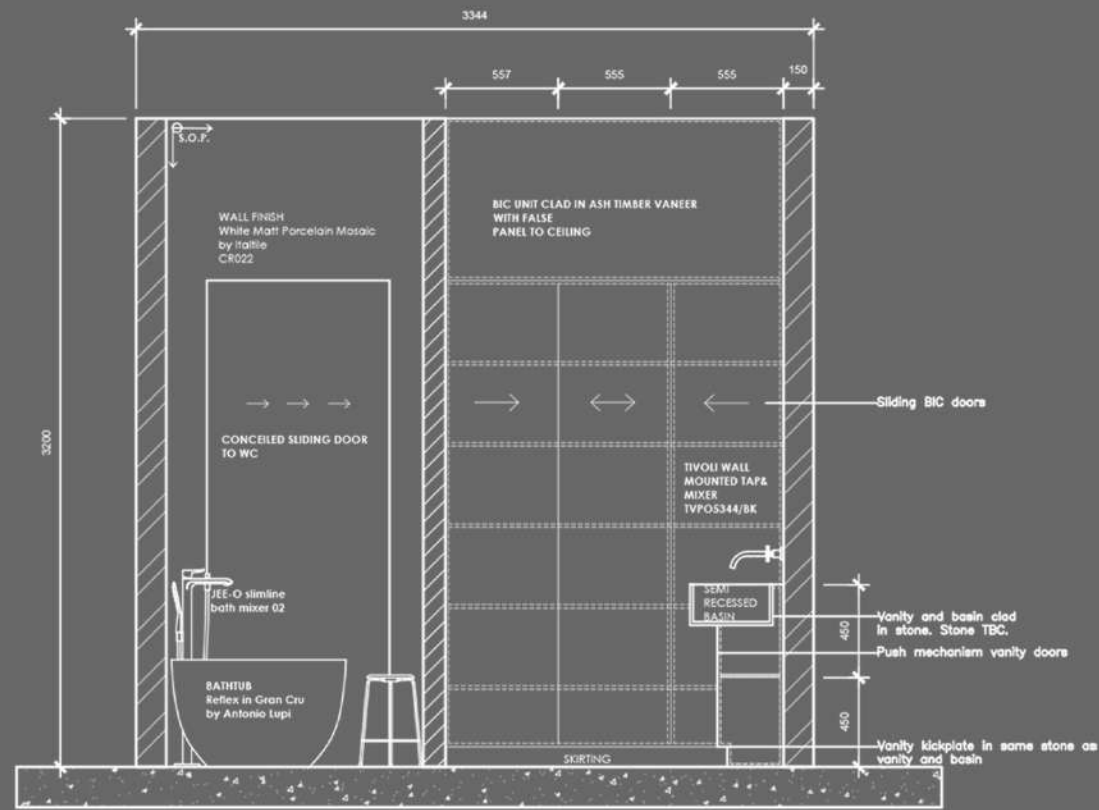
In a truly contemporary style, the apartment prioritizes seamless flow of movement, strategically crafting interconnected social areas. Fluid layouts encourage interaction and functionality, employing open-plan designs, versatile furniture, texture and materials. The incorporation of sleek materials, such as polished concrete and matt black Dekton, and natural finishes like timber and marble adds texture and depth to the space. Along side this depth the apartment remains calm and tranquil through colour and light.



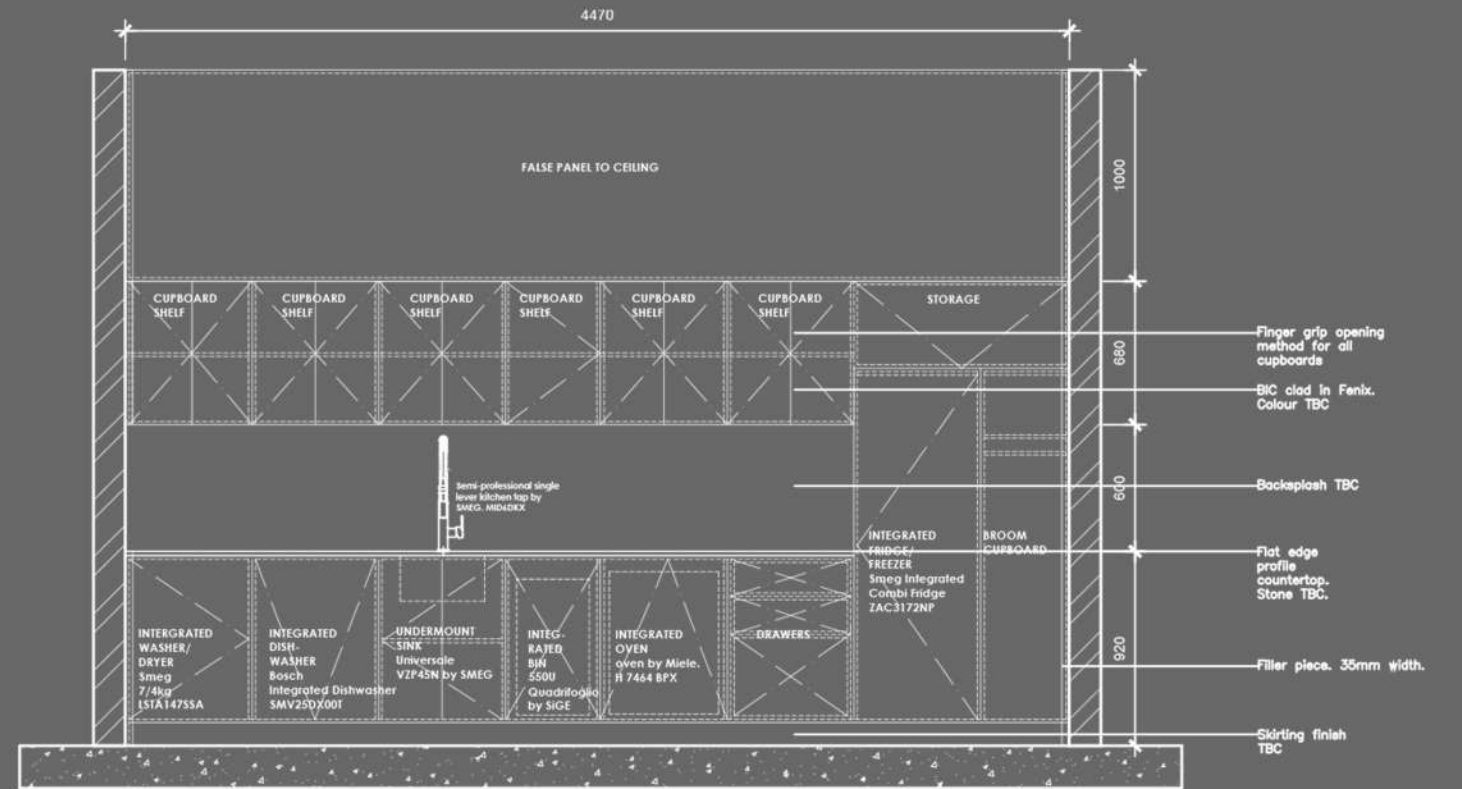
Customised built-in items exhibit clean and angled form avoiding too much fuss by simply achieving a contemporary stance The one below is opposite the kitchen and so serves as extra counter space for when family and friends .



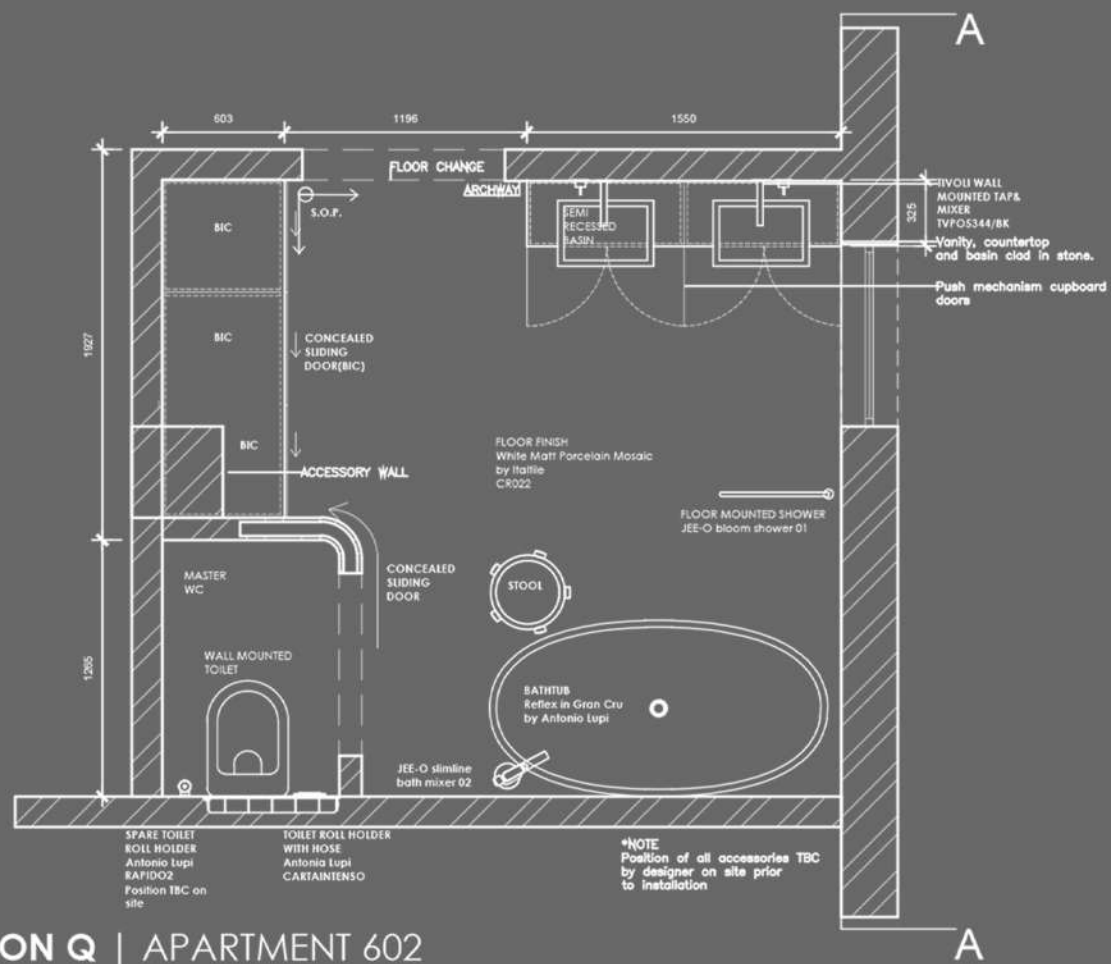
The contemporary bathroom features a gorgeous Antonio Lupi bath . Arches bring one into the space with ease along side the contemporary eco of the small white square tiles and blue towel rail.



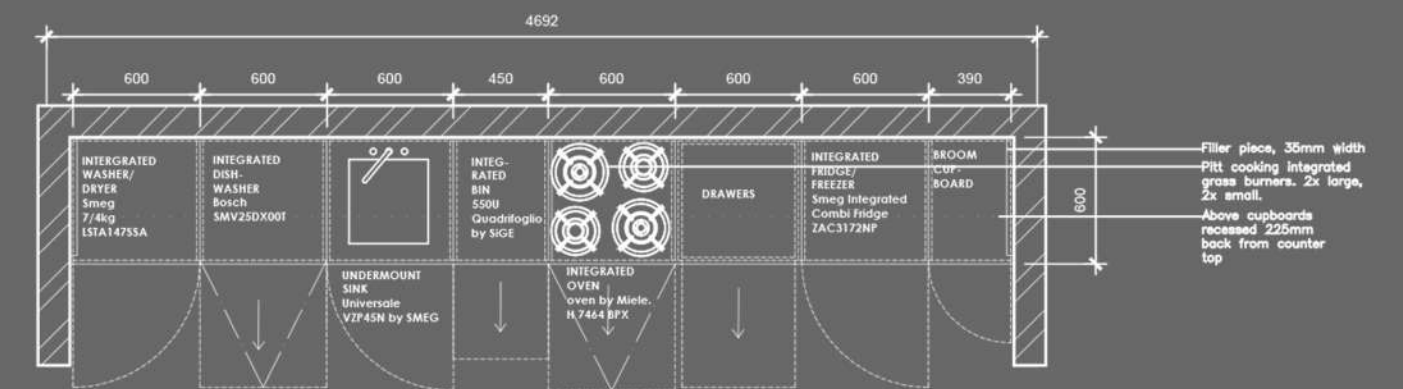
ON Q | APARTMENT 602
BATHROOM ELEVATION AA



ON Q | APARTMENT 602
ELEVATION AA

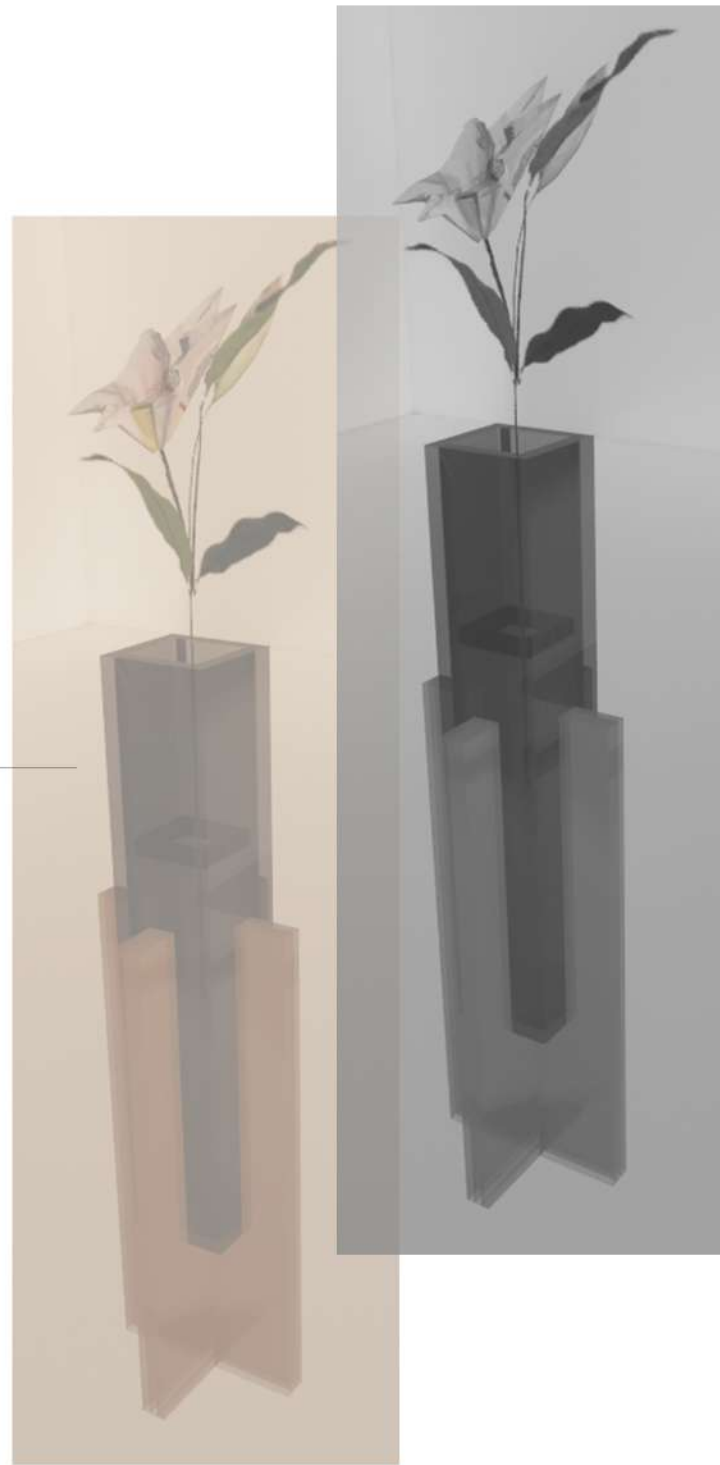


ON Q | APARTMENT 602
BATHROOM PLAN AA

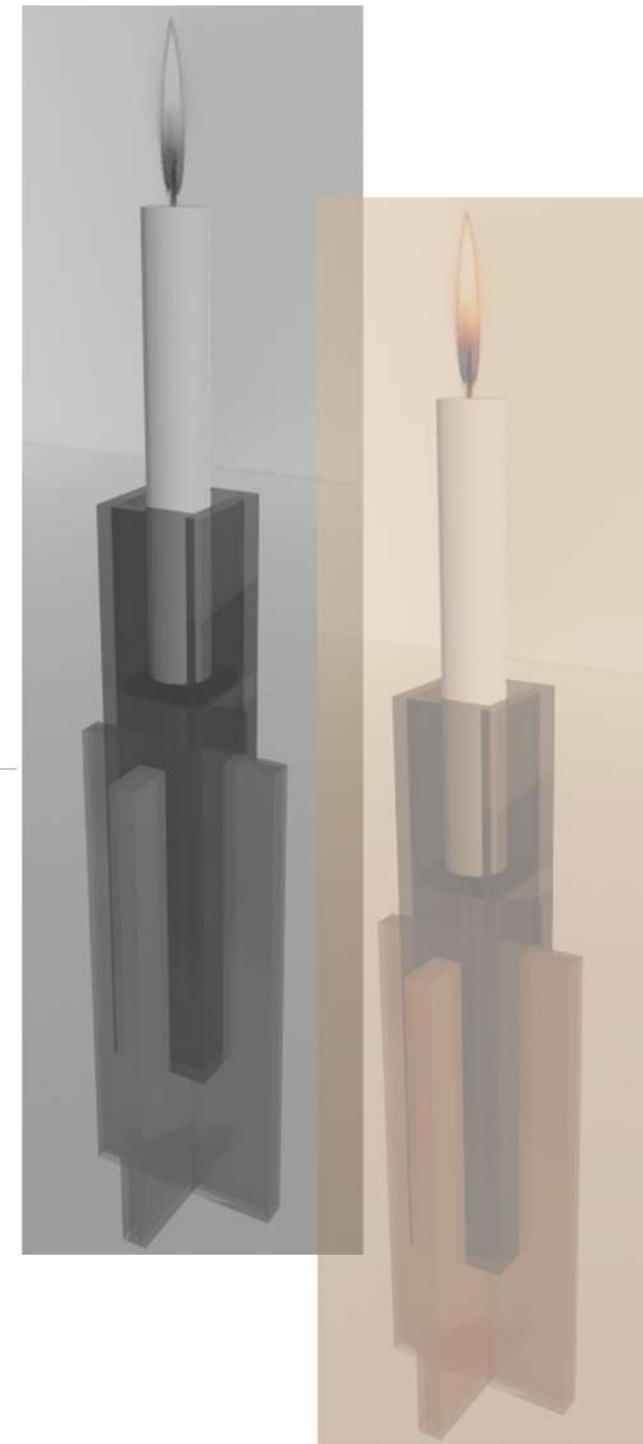


ON Q | APARTMENT 602
PLAN AA

08.
THE SUNSET VESSEL | VASE/CANDLESTICK DESIGN

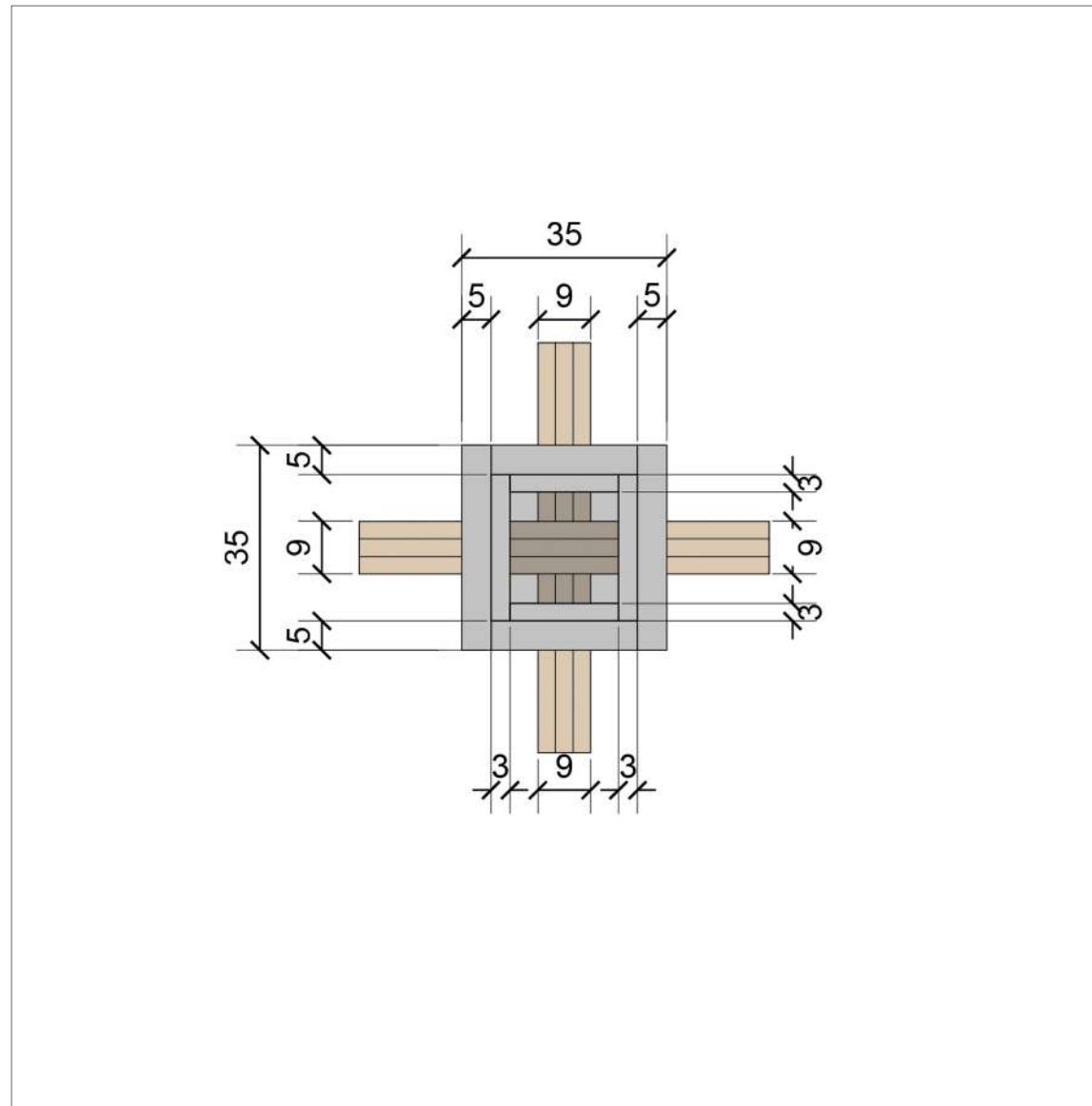


THE ART OF SIMPLICITY

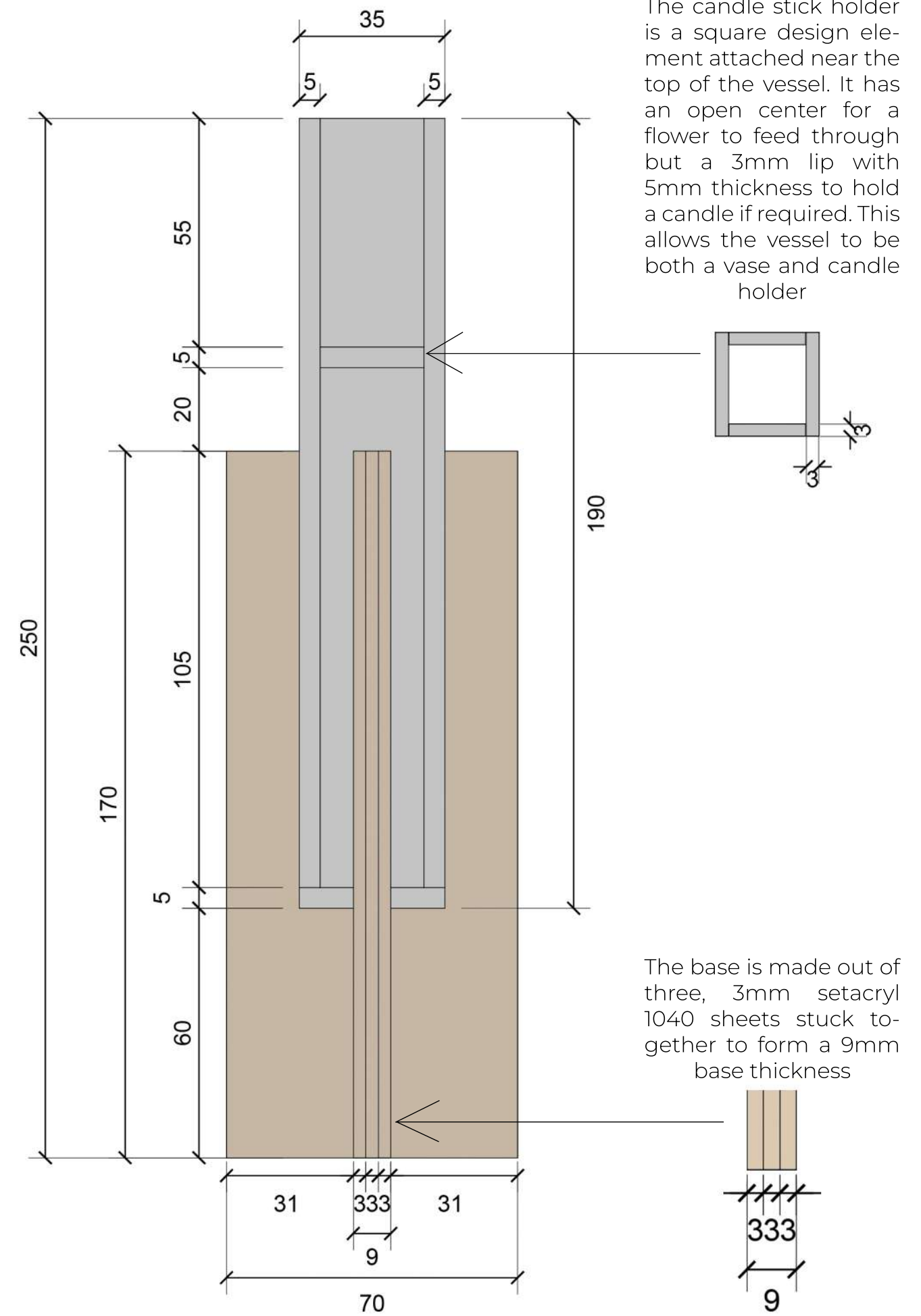


Candlestick holders and vases are currently ON TREND and can be seen all over social media. There is however a gap in the Design and Décor industry for acrylic candle holders/vases AND décor and design enthusiasts around the country need your designs in order to bring new life to their boring table settings. Your challenge is to design a candlestick holder / vase with a maximum height of 300mm and a maximum width of 70 mm. Your holder can only consist of ACRYLIC / PERSPEX but can be any colour and shape of your choice.

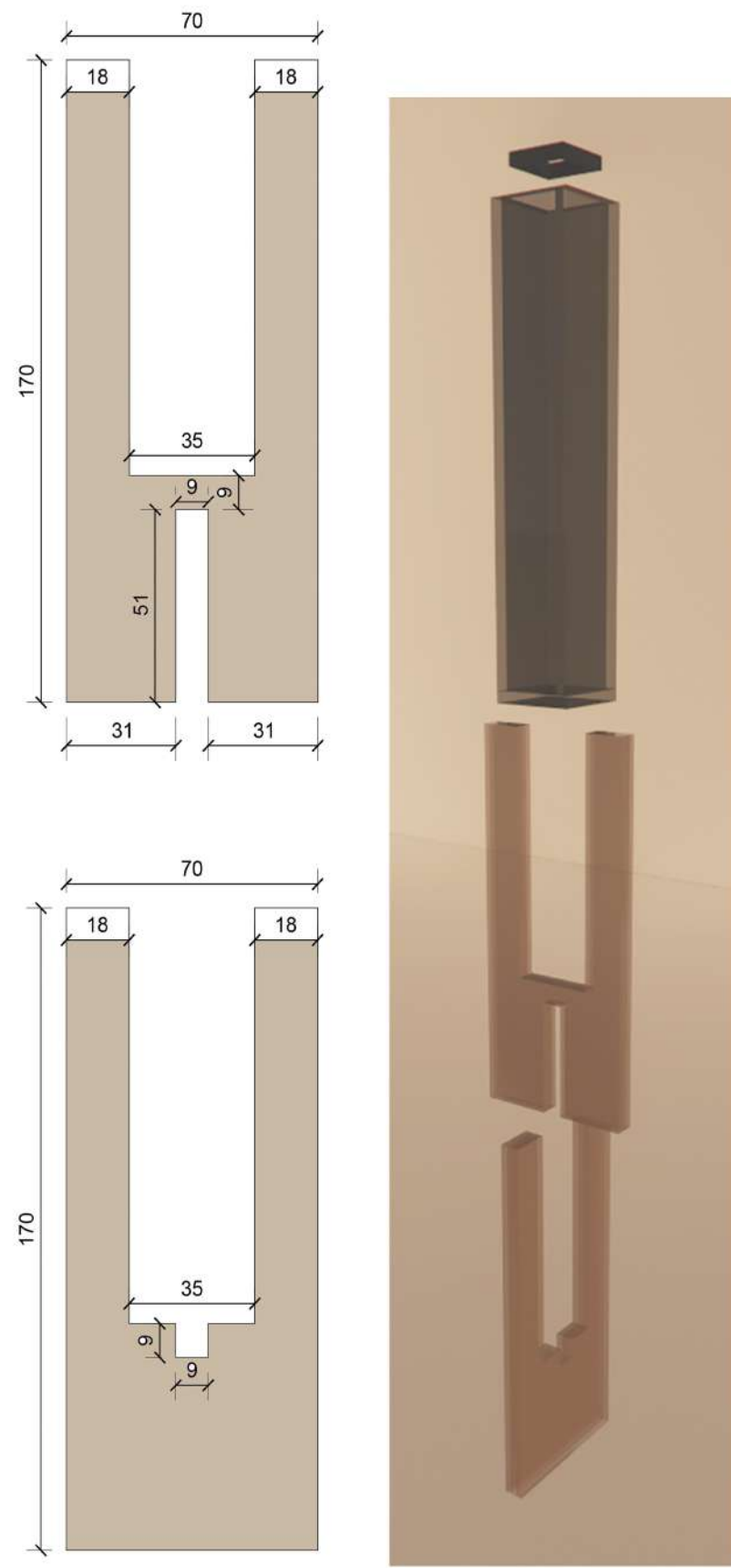
PLAN NTS.



FRONT ELEVATION NTS.



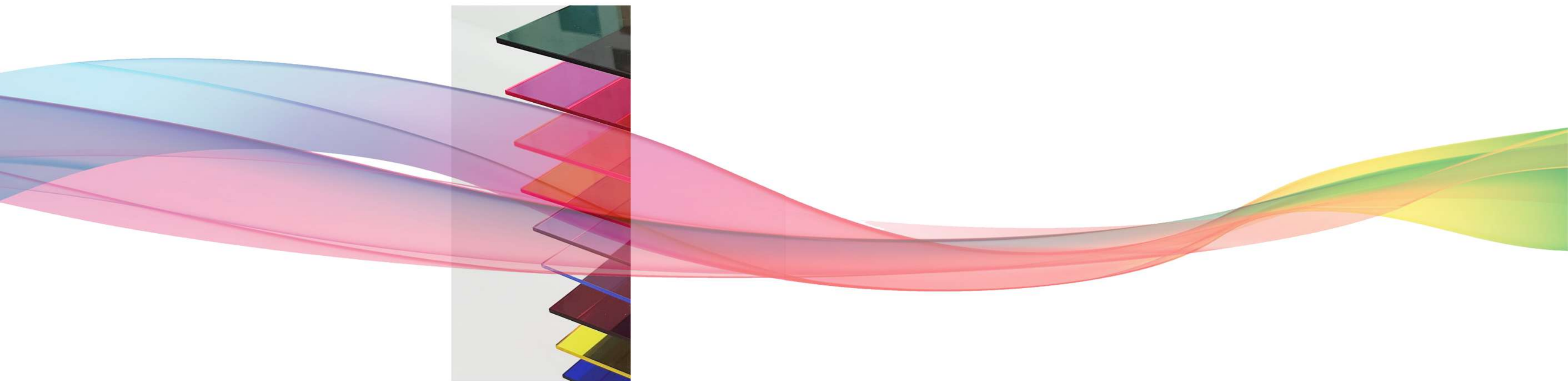
SLOT-TOGETHER STYLE BASE ELEVATION
NTS.



MANUFACTURED PROTOTYPE



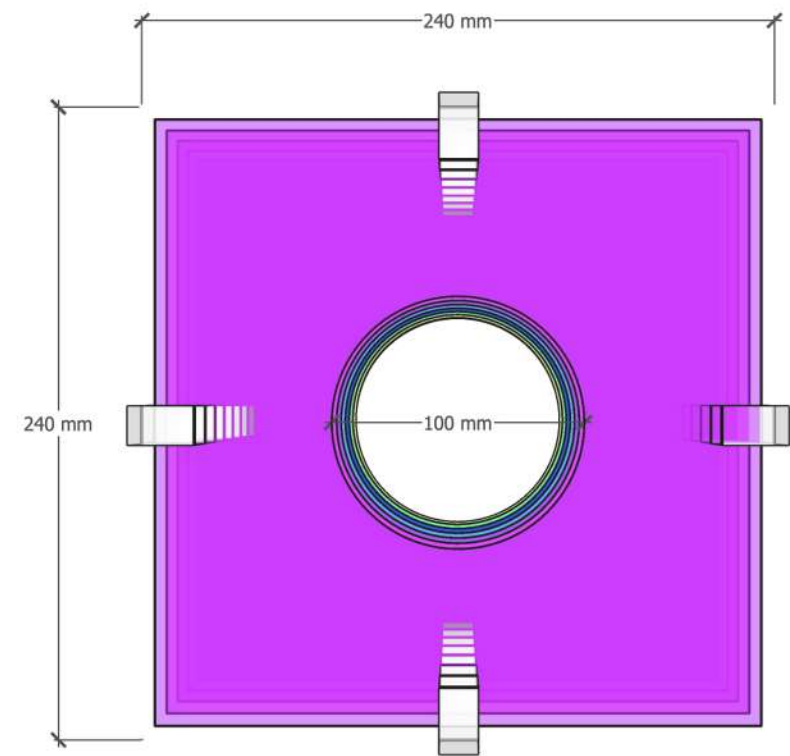
09.
THE PRIDE PRISM | LIGHTING DESIGN



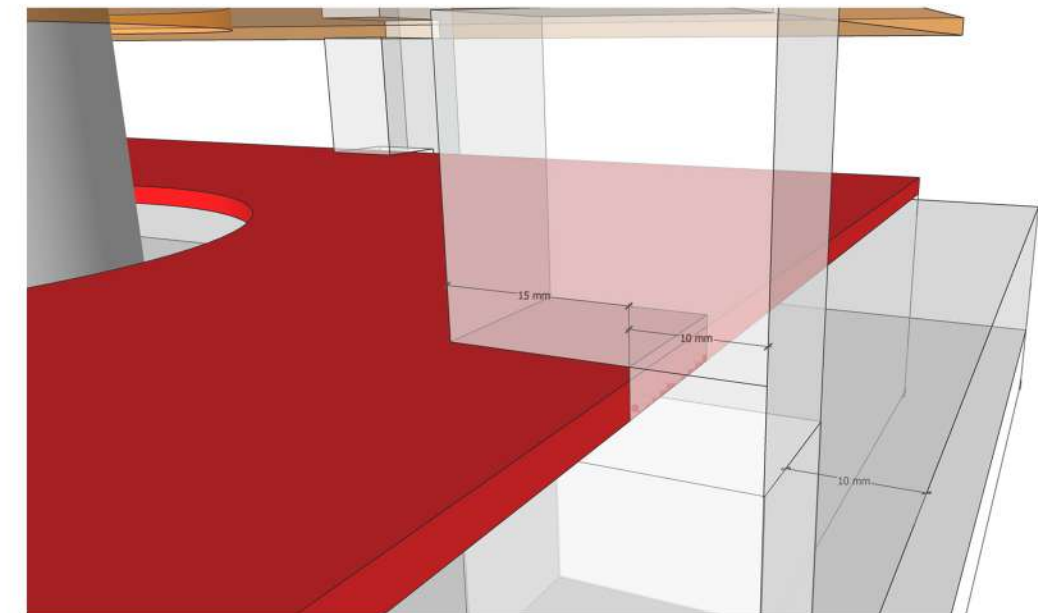
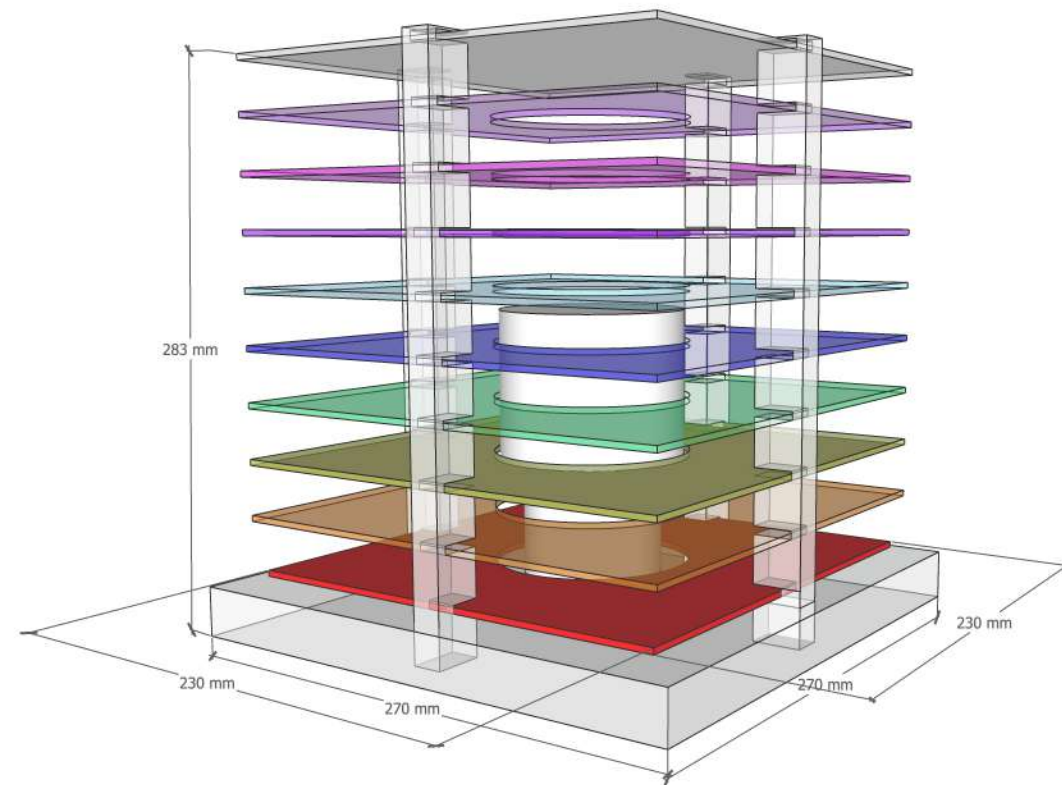
A MULTICOLOUR EXPERIENCE

Students were instructed to design any kind of standing lamp. The project was in partnership with lighting company, Hoi Ploy. They presented the brief to us and judged the final designs. I received the top mark. I received this brief in June 2022 and was inspired by the socio-political context at the time as it was pride month. I decided to design a bold, colourful light source as a nod to the LGBTQ+ community. I chose to use perspex as the only material in the project. This was an intentional decision not only due to the sustainable qualities that perspex has, but also to avoid any types of harmful glues. The light is fully modular and can be dismantled for transportation purposes as well as to re order the colours.

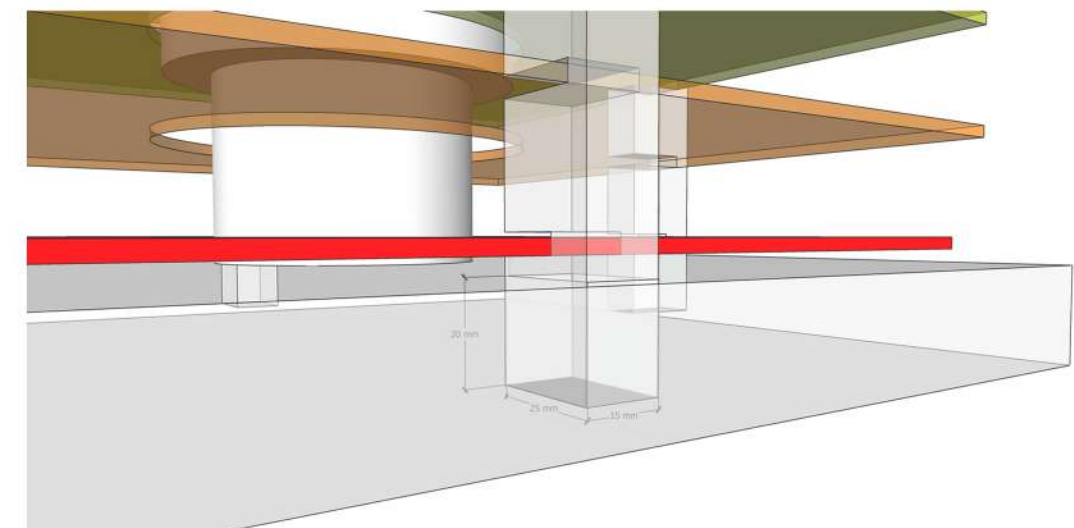
PLAN (NTS)



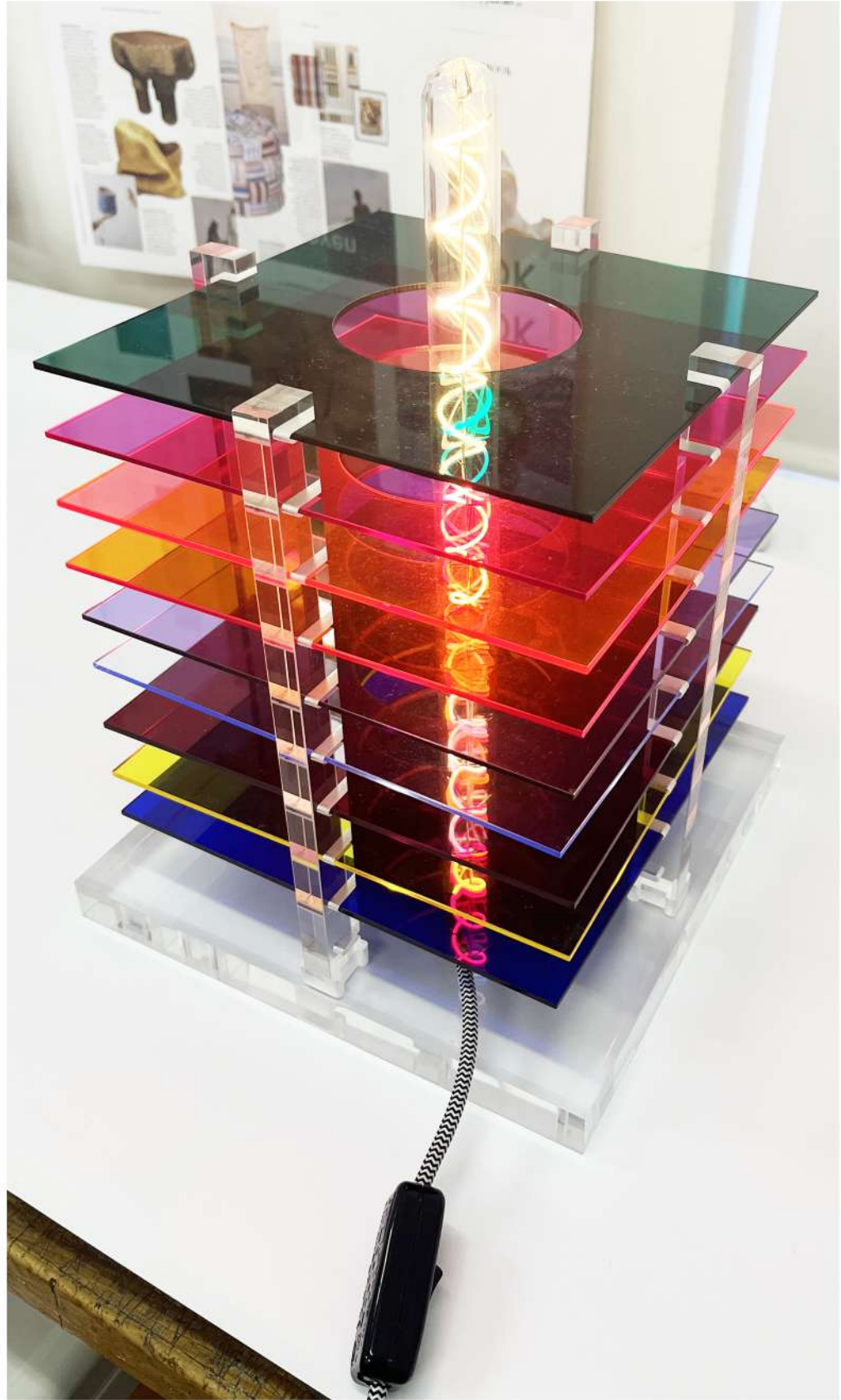
FRONT VIEW (NTS)



The joinery is made out of 15x25mm clear perspex with 4mm by 15mm slits every 24mm. The idea is that the 3mm thick perspex square sheets slot snug into the joinery slits with 10mm support behind each slit.

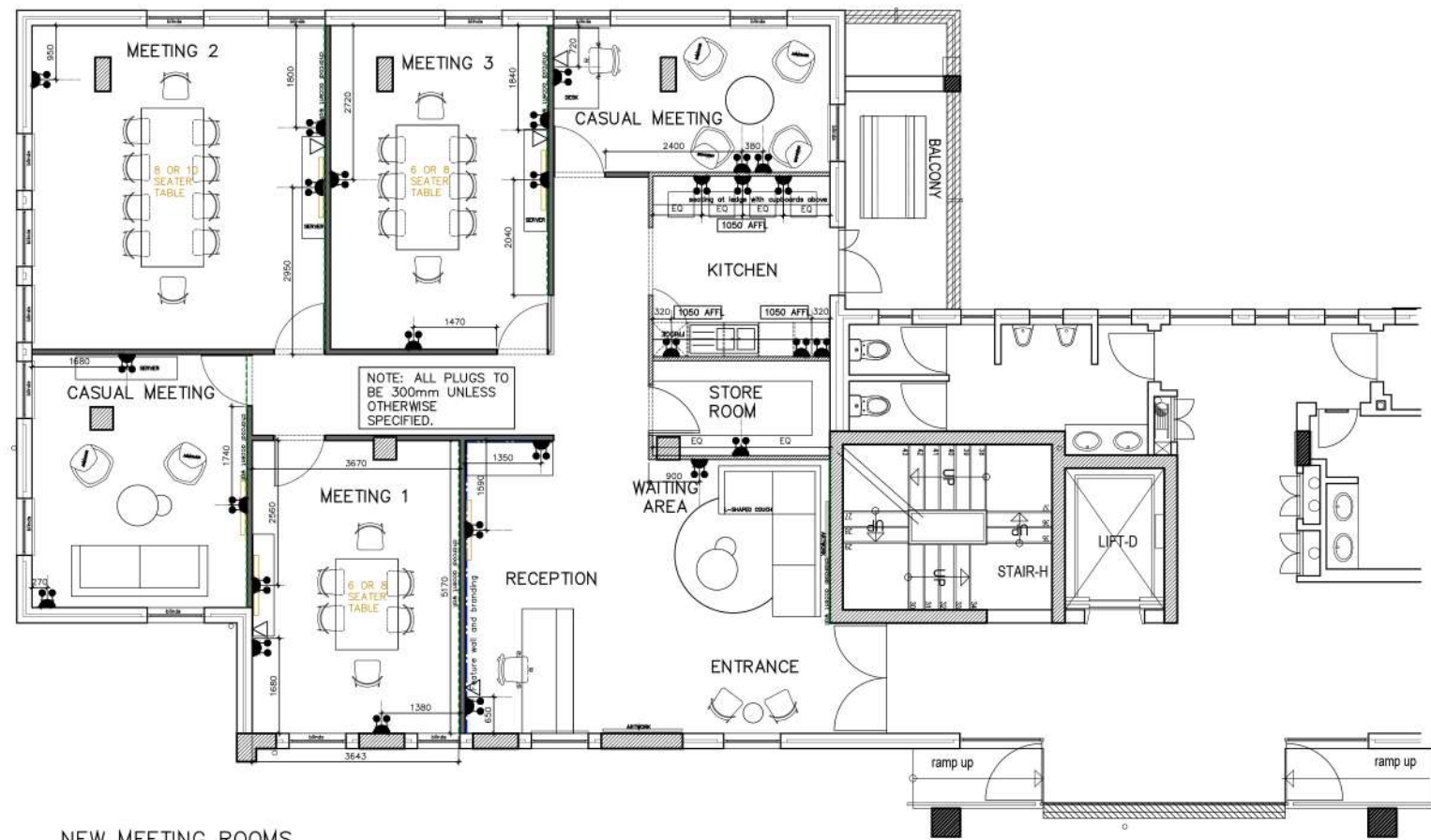


Create a 15mm by 25mm by 20mm deep slot in the base for joinery to be stabilised. The idea is that the structure fits snug into this base



09.
TECHNICAL DRAWINGS

DATA AND ELECTRICAL
NTS.



NEW MEETING ROOMS
OPTION 2
SCALE 1:50

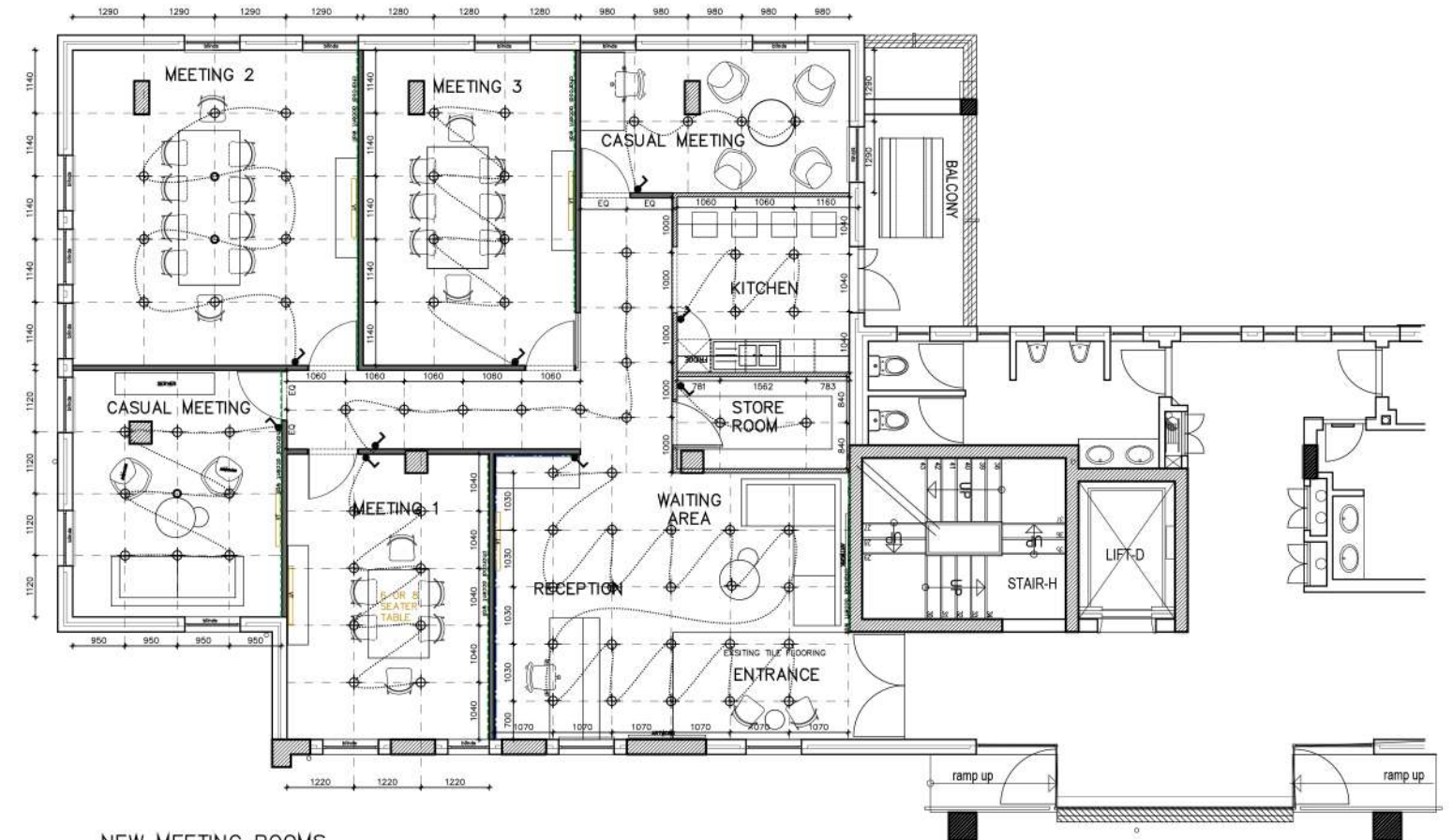
ELECTRICAL OUTLET LEGEND:

	16A Dual Switched Socket
	16A Single Switched Socket
	Data Point

NOTES : PLUGS IN ALL PODS TO HAVE THE FOLLOWING:
 - USB
 - 2POINT
 - 3POINT
 ALL PLUGS TO BE AT 300mm AFFL UNLESS OTHERWISE SPECIFIED.

	INTERNET SYSTEM TBC CLIENT
--	----------------------------

LIGHTING LAYOUT
NTS.

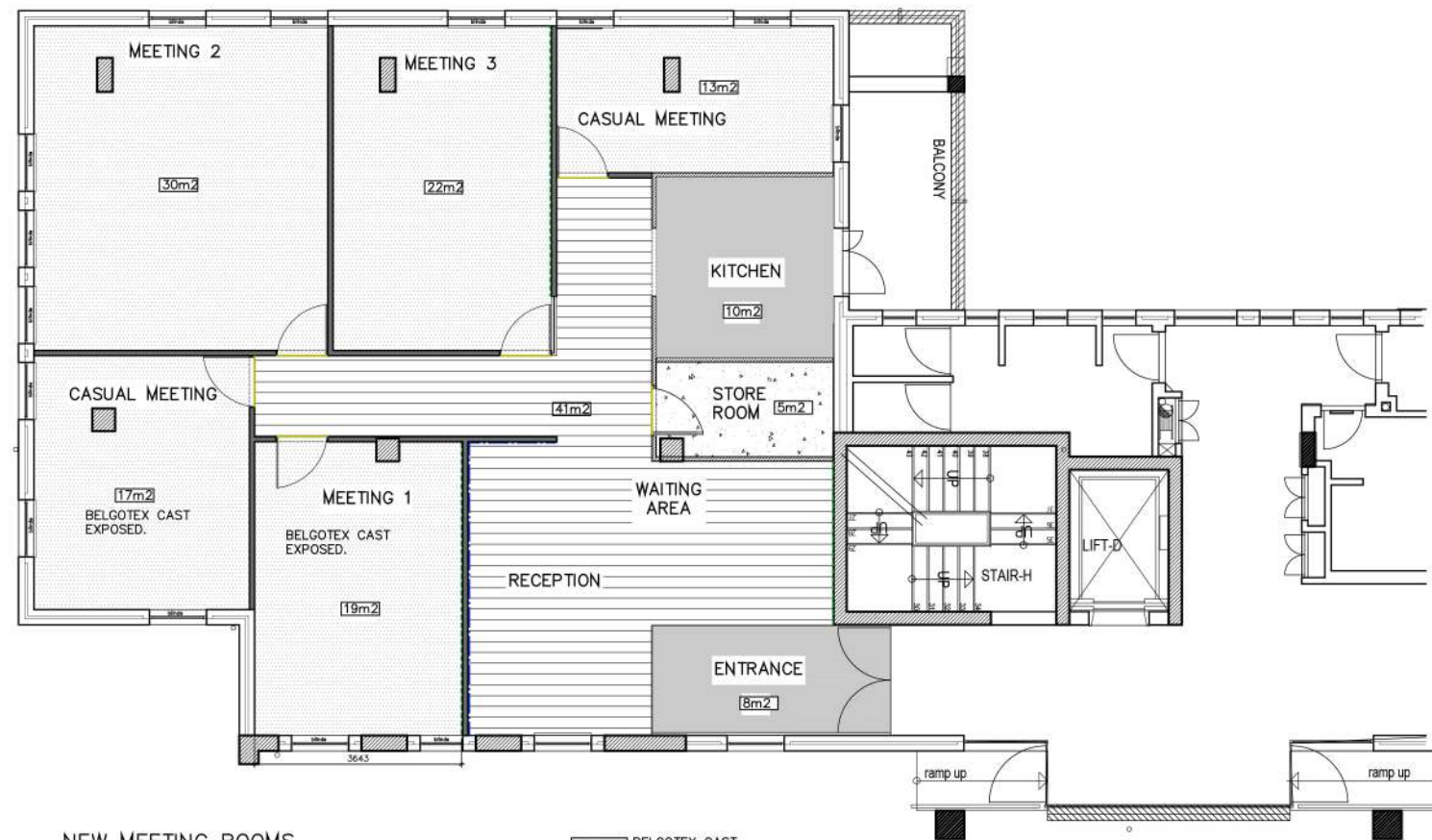


NEW MEETING ROOMS
OPTION 2

LIGHTING LEGEND:

	LED White down lights with warm light - GU 10 BULB WARM WHITE WITH MATT WHITE XXX FROM - DIRECTIONAL
	Switch Veti Switch 1 Lever 1 Way 2x4 - Charcoal
	Pendant light Meridian Pendant in Ink by Hortex Haus

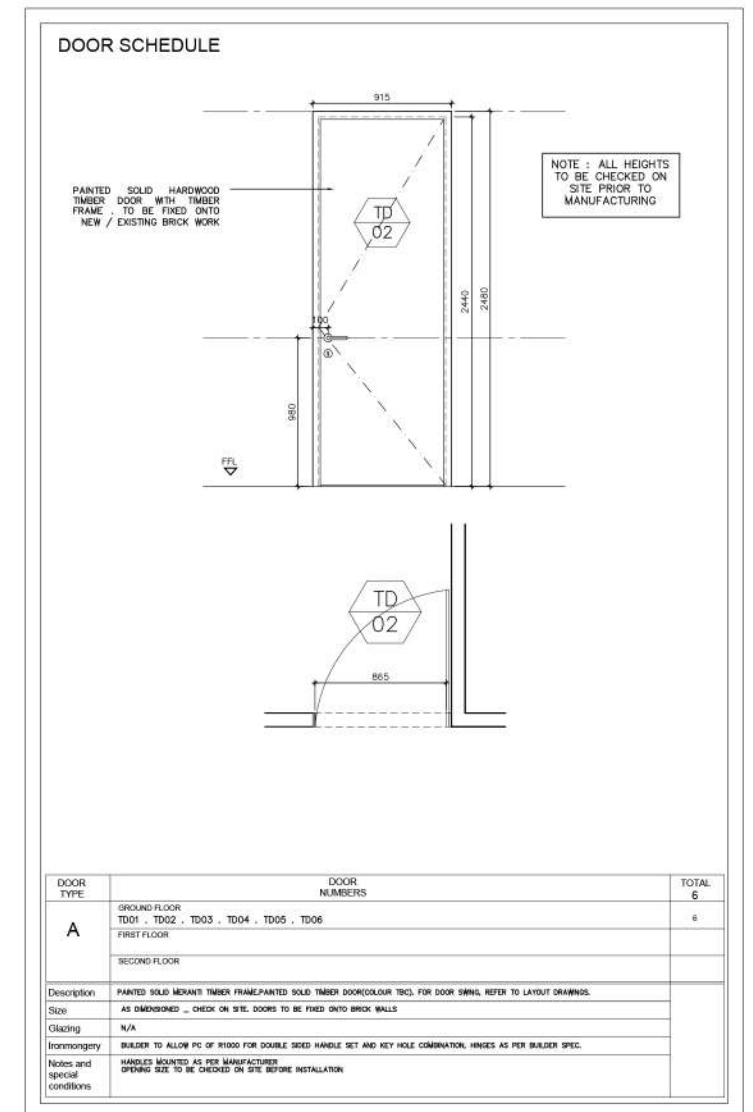
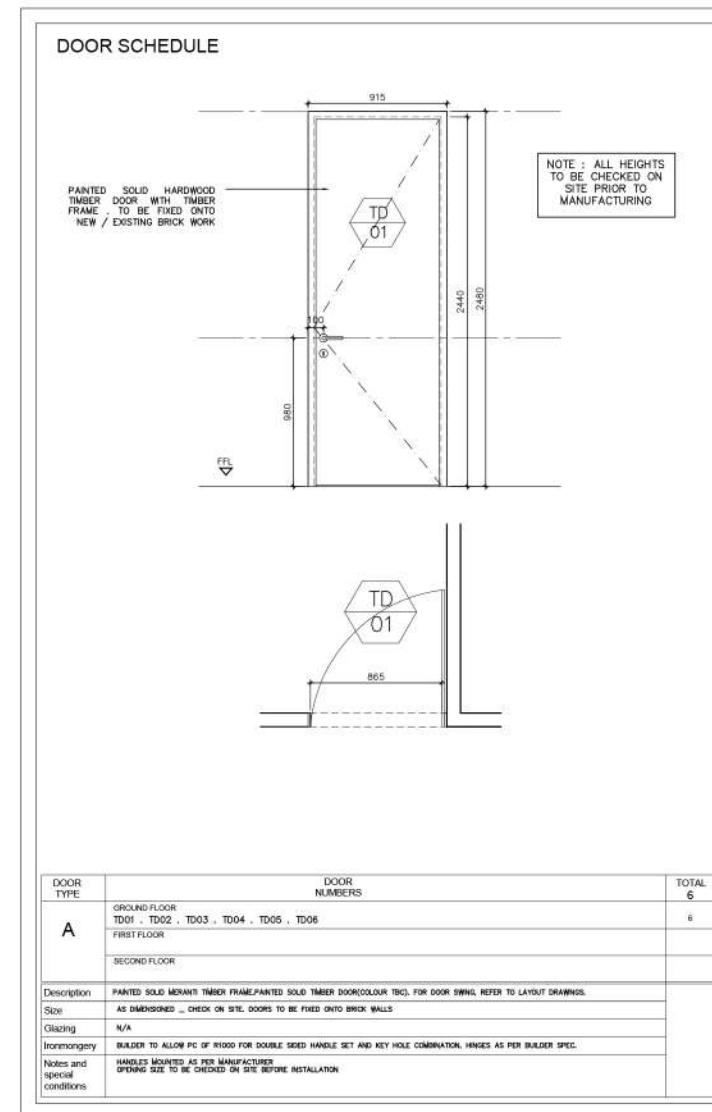
FLOOR FINISHES LAYOUT
NTS.

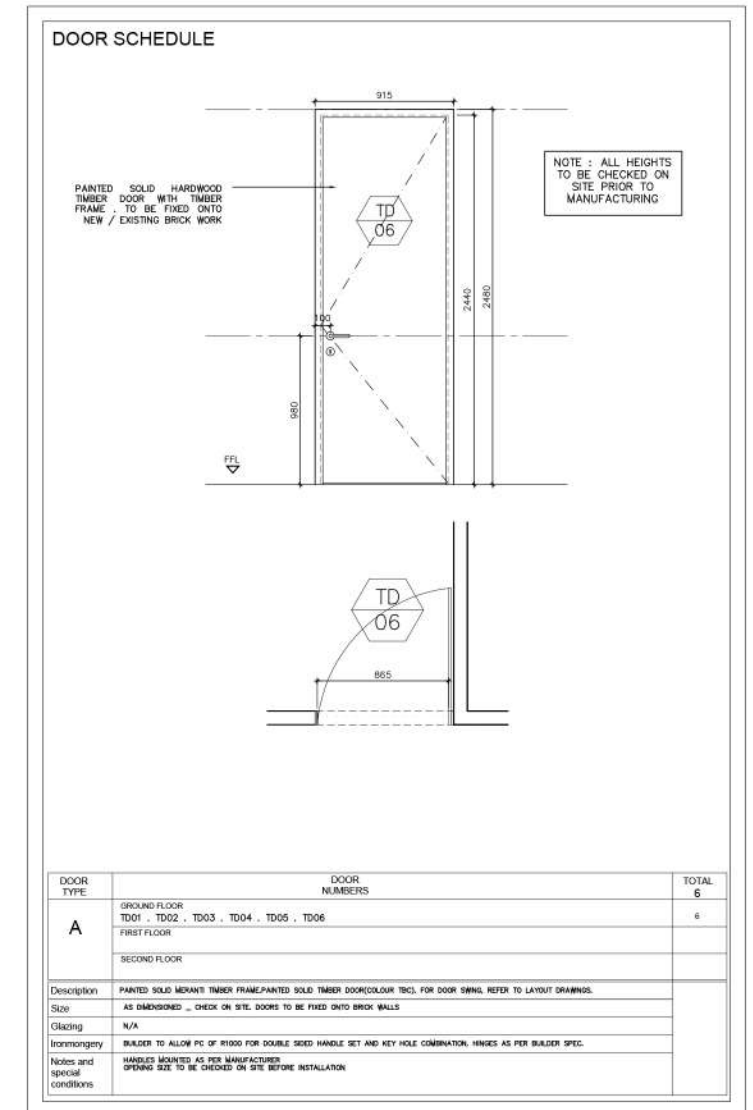
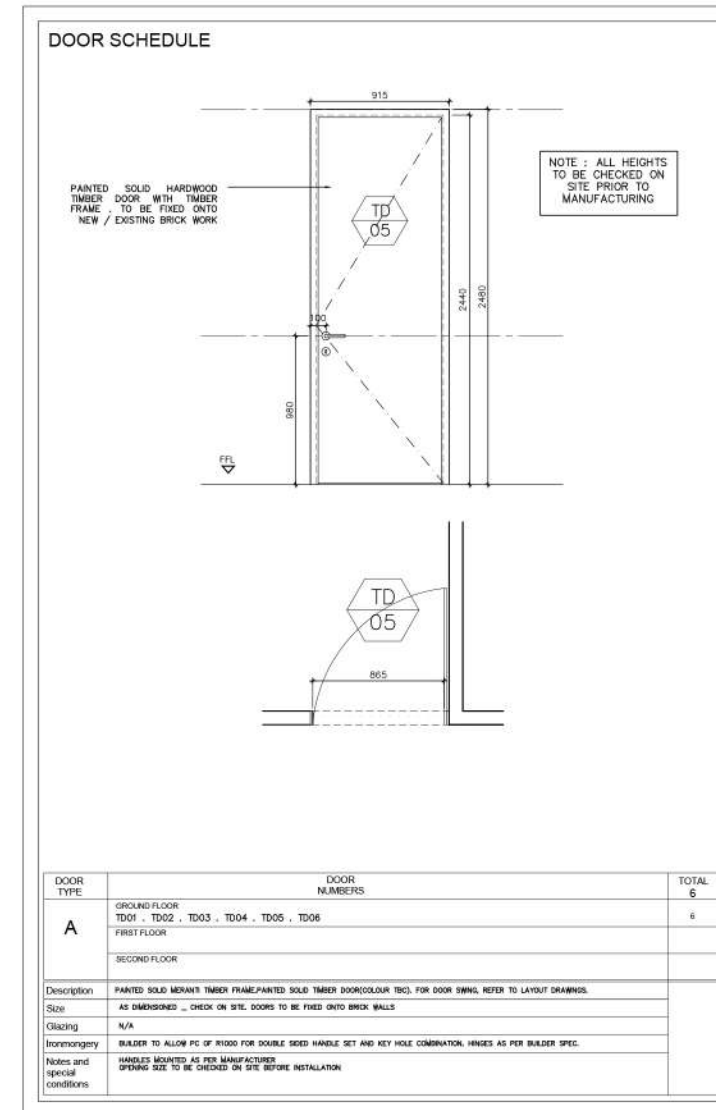
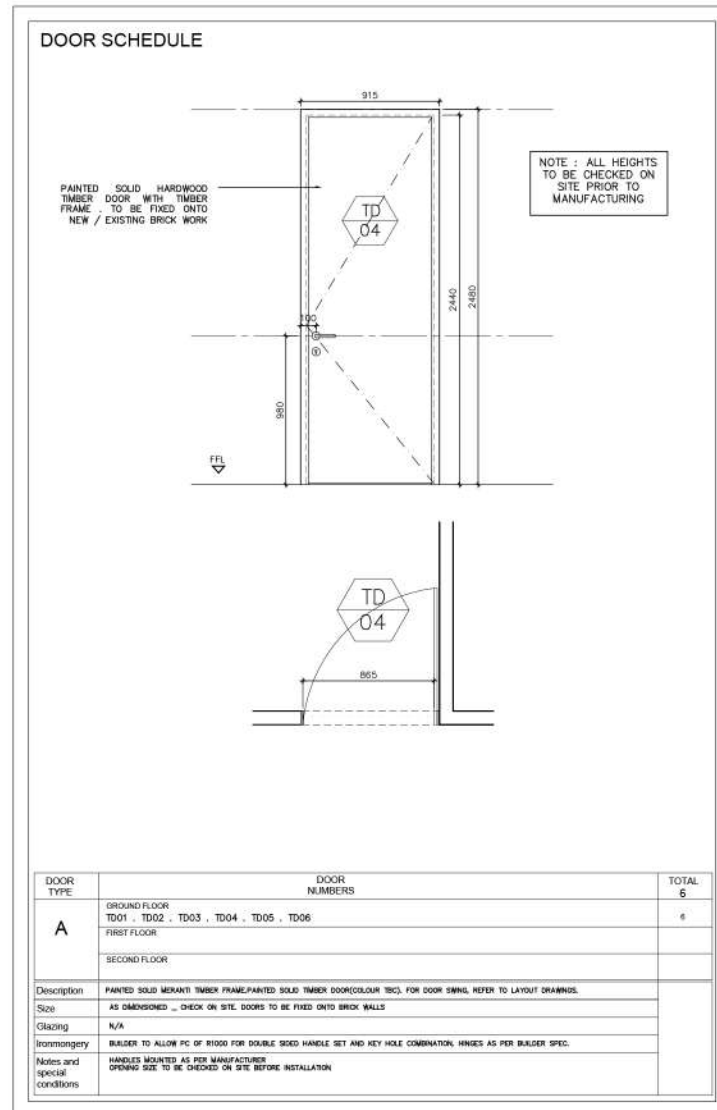
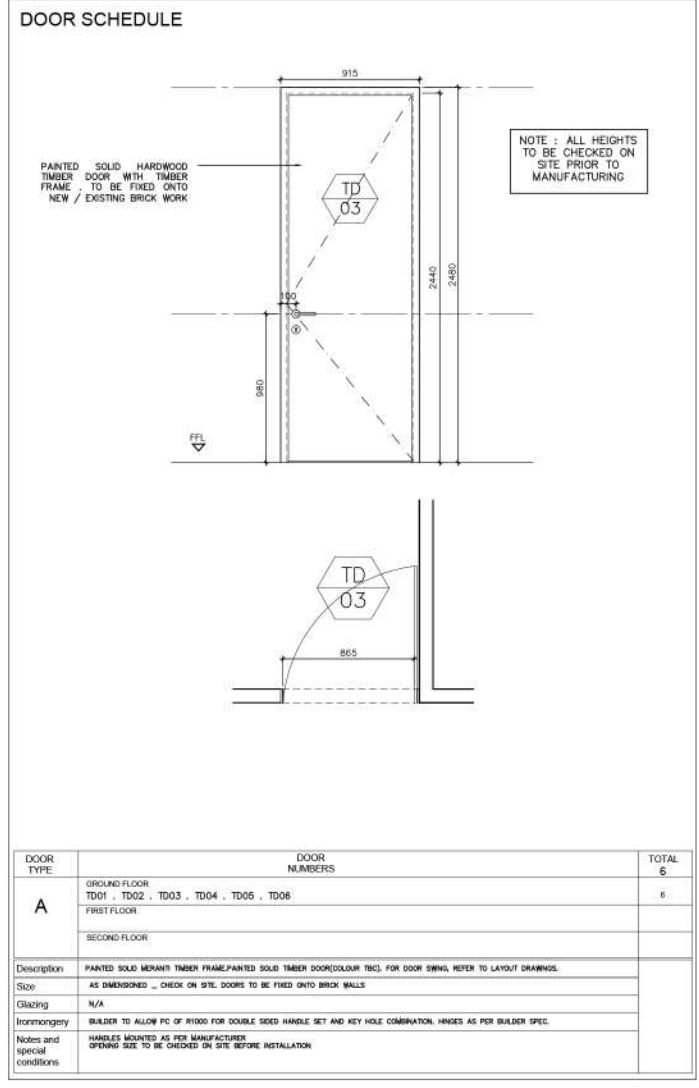


NEW MEETING ROOMS
OPTION 2

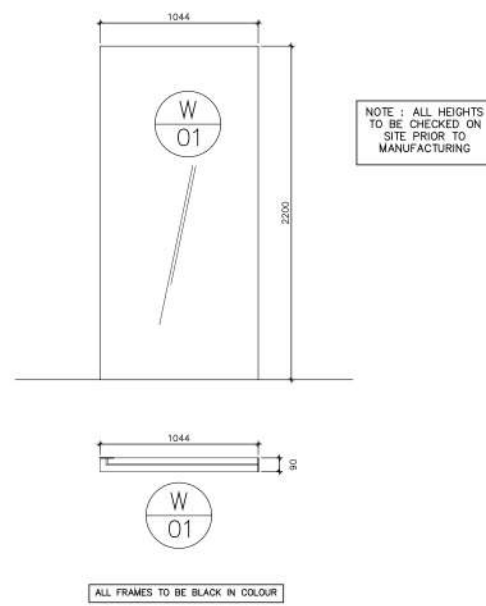
- BELGOTEX CAST EXPOSED, COLOUR TBC 101M2
- TERRAZZO TILE FROM UNION TILES - CODE W34HPSL 18 M2
- VINYL FLOORING, BELGOTEX DAVENPORT, COLOUR TBC, 41M2
- CONCRETE FLOORING 5M2
- STAINLESS STEEL EDGE TRIM

DOOR AND WINDOW SCHEDULE
NTS.





WINDOW SCHEDULE



WINDOW TYPE	WINDOW NUMBERS	TOTAL
G	GROUND FLOOR WD 01	1
	FIRST FLOOR	
	SECOND FLOOR	
Description	FRAMELESS 10MM SOUND PROOF TOUGHENED SAFETY GLASS PANELS WITH DRYWALL ALUMINUM FRAME	
Size	AS DIMENSIONED - CHECK ON SITE	
Glazing	10 mm SOUNDPROOF CLEAR FLOAT GLASS AS PER NBR.	
Finishing		
Notes and special conditions	ALL FRAMES TO BE POWDER COATED BLACK	

THANK YOU!