

SARAHBRINK  
INTERIOR DESIGN PORTFOLIO





**HELLO THERE,**

Design is about solving problems; finding solutions to issues in the social, the creative, the industrial realms. Art is a beautiful means by which any and all of us can express ourselves – being a creator or an observer. We find both joy and solace in art. We interrogate our own perceptions and we explore solutions through art and design. For me, this is a driving force. And what a powerful tool to be able to harness both personally and in collaboration with others. To create.

It is through this lens of the alliance between art and design that I interpret both interior design and interiors-focused product design. Allowing for a convergence of these two aspects makes for functional, intentional, and beautiful design.

Crucial to my design process is the conceptual development of an idea, a brief. Staying true to the final concept brings cohesion and depth to the details of any design.

*The details are not the details. They make the design.  
– Charles Eames*



## CONTENTS

<b>HOTEL FISSURE</b> LUXURY HOTEL DESIGN   EXPERIENTIAL DESIGN	1	<b>PRODUCT DESIGN</b>	25
<b>APARTMENT G</b> KSA KITCHEN DESIGN COMPETITION ENTRY	5	<b>WE WEAVE</b> CAPE LOOMS MURAL	37
<b>HOME SPUN</b> LUXURY TREE HOUSE	9	<b>ELLERMAN HOUSE</b> PHOTOGRAPHY WORKSHOP	39
<b>65 TRILL ROAD</b> RESIDENTIAL INTERIOR	11	<b>WORKING DRAWING PACKAGE</b> TECHNICAL DRAWINGS	41
<b>CO.CREATE</b> CO-WORKING OFFICE SPACE	17		
<b>FRANKIE'S DINER</b> MEMPHIS INSPIRED DINER	21		

## HOTEL F/SSURE

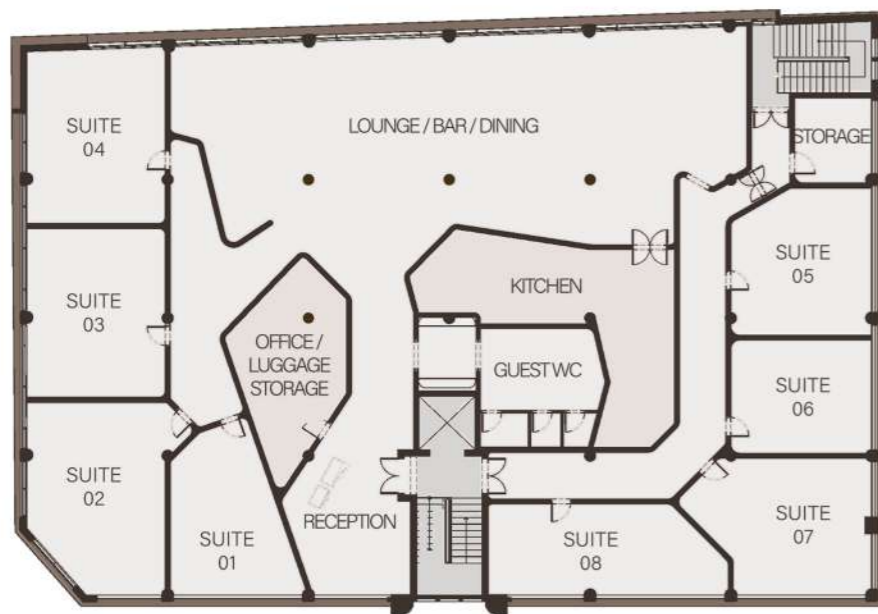
LUXURY HOTEL DESIGN | EXPERIENTIAL DESIGN

### BRIEF

The brief requires a luxury hotel experience set in two locations. The boutique hotel on Searle street in Woodstock, Cape Town, as well as four luxury all-inclusive "pods" at a separate location. This can be anywhere within a four hour drive of the main hotel. The idea is to give guests a 360 degree hospitality indulgence. They get the personalities of both a gritty, energetic inner-city neighbourhood, and the tranquility and spaciousness of a removed, private space, a bit more embedded in nature. Crucial to a guest's stay is the experience. Experiential design is the main attraction here. Guests must depart from their holiday with stories to tell. The physical design should engage all the senses - design for experiences.

### CONCEPT

Awe, humility, innovation, colour, and careful curation inform the experiential design of Hotel FISSURE and its getaway pod cluster in the mountain. Hotel FISSURE is a boutique hotel situated on Searle Street, Woodstock. It explores the incongruous nature of the human condition. Our relationship with the natural world is interrogated through the interior architecture and materiality of the spaces which bring the guest to confront this discordant state of being. Through contrasting material finishes and origins, and intentionally awkward and, at times, difficult spaces, the guest is immersed in a spatially and tactilely stimulating environment. It is designed, ultimately, to inspire thought and interrogation of self - to make us conscious of our relationship with the world around us and our influence upon it.

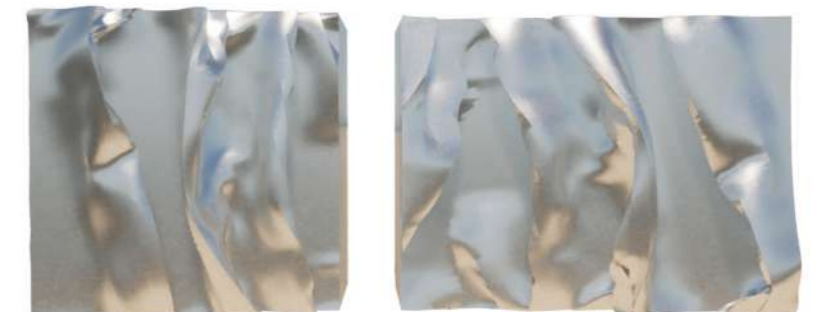


HOTEL STRUCTURAL LAYOUT PLAN  
NTS



HOTEL RECEPTION

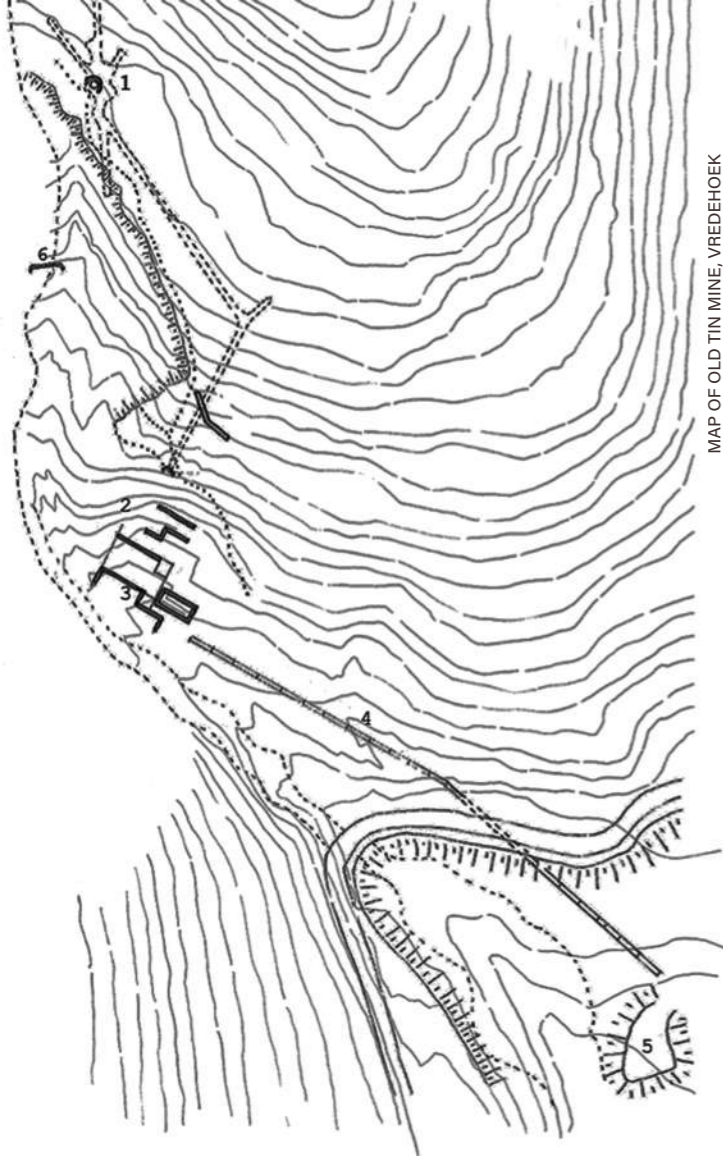
Based on HUDSON by  
UK based artists  
Fredrikson Stallard



RECEPTION DESK





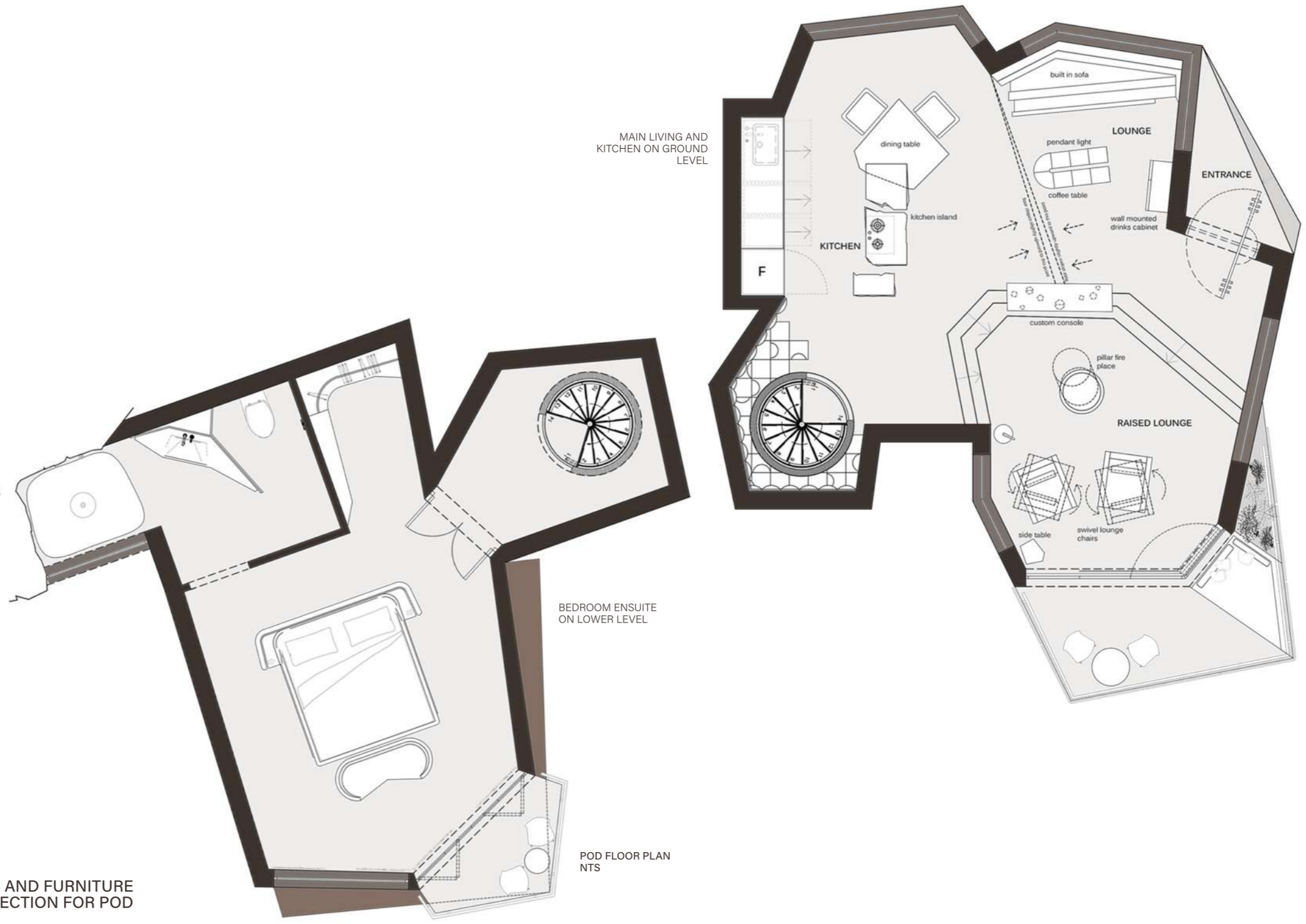


MAP OF OLD TIN MINE, VREDEHOEK

The decommissioned tin mine in Vredehoek, Cape Town sits beneath Devil's Peak on the Table Mountain range – one of the oldest mountain formations in the world. The quarry is the site of our four luxury pods which will offer guests an all-inclusive and catered for experience never to be forgotten. Uninterrupted views of the surrounding mountain range inspire awe as Nature's majesty is contemplated. The depths of the quarry – contrarily, the height of its walls – bring a sense of wonder at the intervention and destruction of man's endeavours.

The quarry is dug into malesbury shale. It was in this rock that cassiterite (tin-ore) was found, which appears in horizontal veins of white quartz crystals within the shale.

**MATERIALS AND FURNITURE SELECTION FOR POD**



MAIN LIVING AND KITCHEN ON GROUND LEVEL

BEDROOM ENSUITE ON LOWER LEVEL

POD FLOOR PLAN NTS



BEDROOM

KITCHEN

LIVING

LOUNGE

## APARTMENT G

KSA KITCHEN DESIGN COMPETITION ENTRY

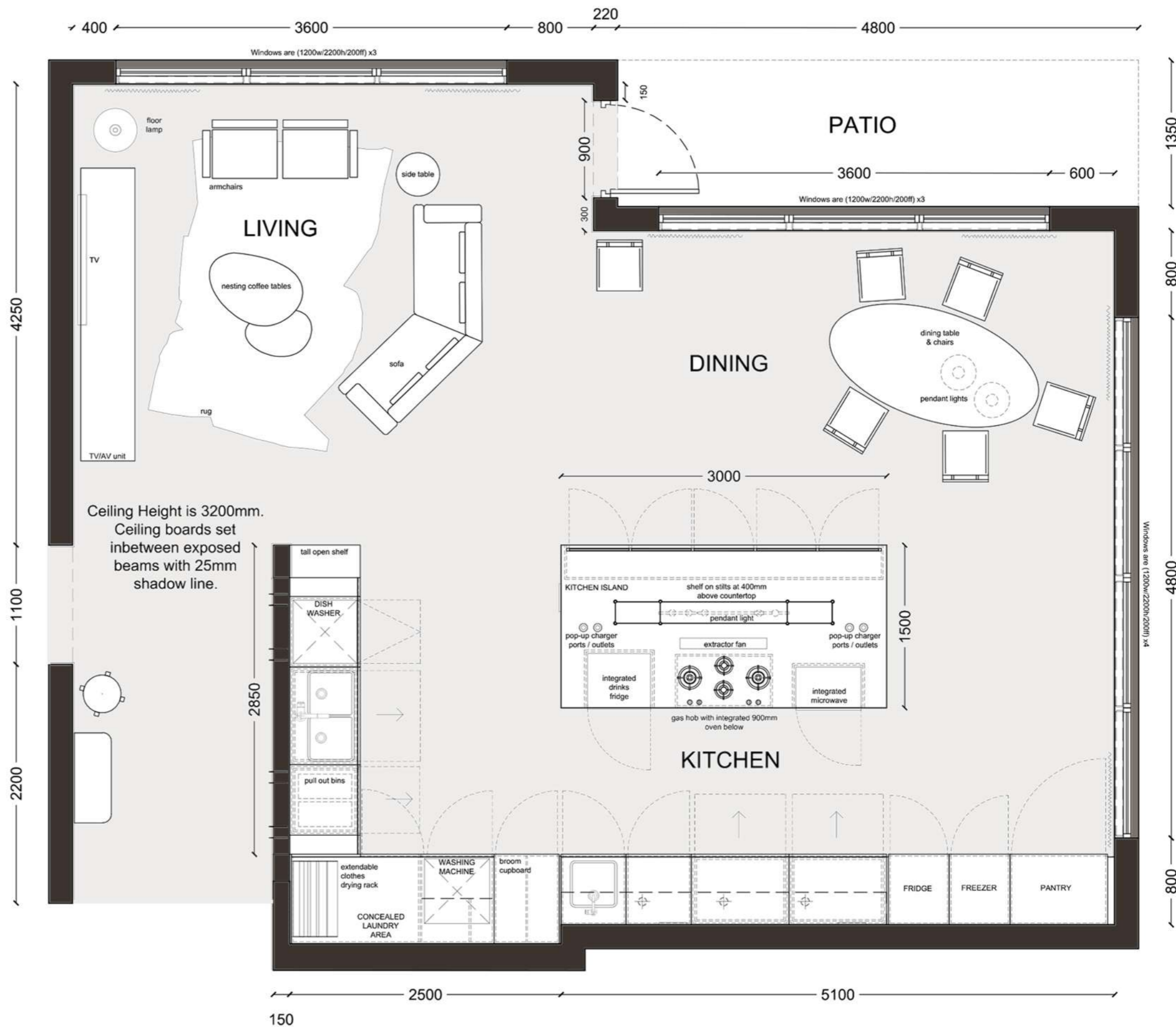
### BRIEF

The brief indicates that the clients, a lawyer and a manager of a trendy restaurant, want to give their top floor apartment a kitchen that speaks to their personal and entertainment needs, as well as their cultured style. They would like a kitchen designed to be sleek and high-tech, on a limited budget. They want their space to feel high-end. The apartment is located in a vibrant part of the city with a lively night life, cafe culture, galleries and theatres.

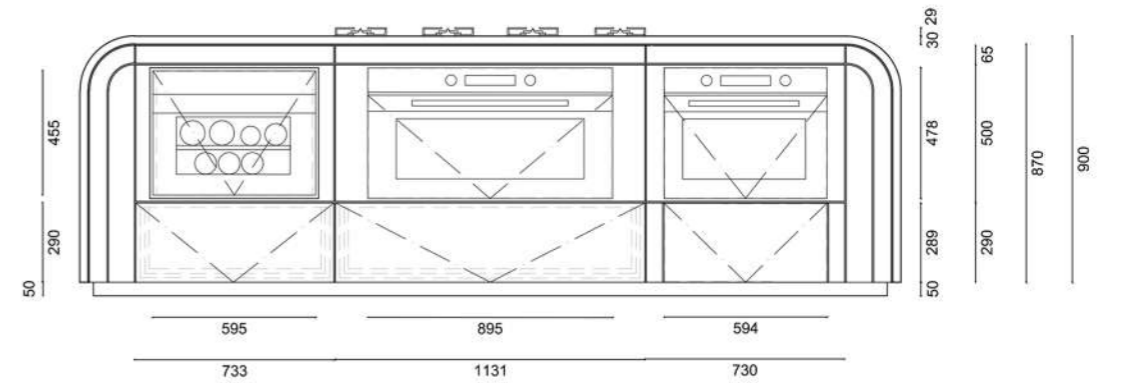
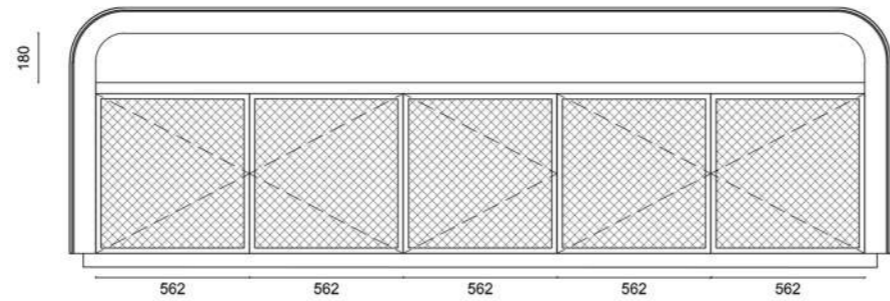
### CONCEPT

This kitchen is designed in a modern contemporary style that has a sleek and sophisticated look, while still maintaining the character and quirk of the clients. The stainless steel finishes give the kitchen a trendy feel. Paired with the warmer bronze and brass metallic tones the space makes for a timeless living and dining setting.

Conceptually, the design provides a blank canvas for the clients to make their own over time. It is functional and uncluttered but compliments the rest of the space beautifully. Allowing inspiration and personalisation to grow.



FLOOR PLAN | KITCHEN  
NTS



FRONT ELEVATION

BACK ELEVATION





## HOMESPUN

### LUXURY TREE HOUSE

#### BRIEF

This luxury tree house brief called for the design of a unique tree house-like structure aligned with biophilic design principles that would offer guests an all-inclusive space of lush tranquility. Life during a pandemic proved to be restrictive, so this space should be one in which freedom comes from reconnecting the mind, body and soul. Where our connection to nature can become a focus, even if just for a moment. The location of the tree houses, together forming a luxury resort, must reflect this essence of freedom and calm. At the same time it should reignite a passion for nature.

#### CONCEPT

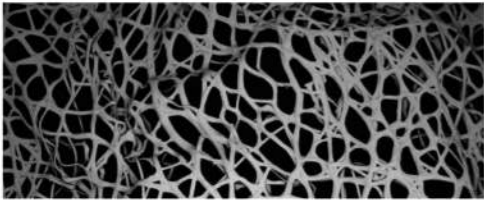
HOME SPUN is your cocoon of re-energising seclusion. Fittingly, the pod structures are spun by the silk worms among whom you reside here, in the Xishuangbanna rainforest of southern China. This treehouse embodies human's collaboration with nature and is aligned with the natural processes of the surrounding environments. The robotically woven, biologically spun silk strands form the shell of your space in which you find that the multitudinous entanglement and detached threads of modern life come to form a cohesive refuge.



### Exterior shell of pod

A water-based biocomposite made with technology developed by the Mediated Matter Group.

A robotic fabrication platform is engineered to convert cellulose, chitosan, pectin, and other abundant biopolymers, into high-performance sustainable hydrogels that can be 3D printed into objects for application at any scale. The material is engineered to be adaptive and to respond to its environment. "Sourced from organic matter, printed by robots, and self-assembled by water."



### Interior silk screens

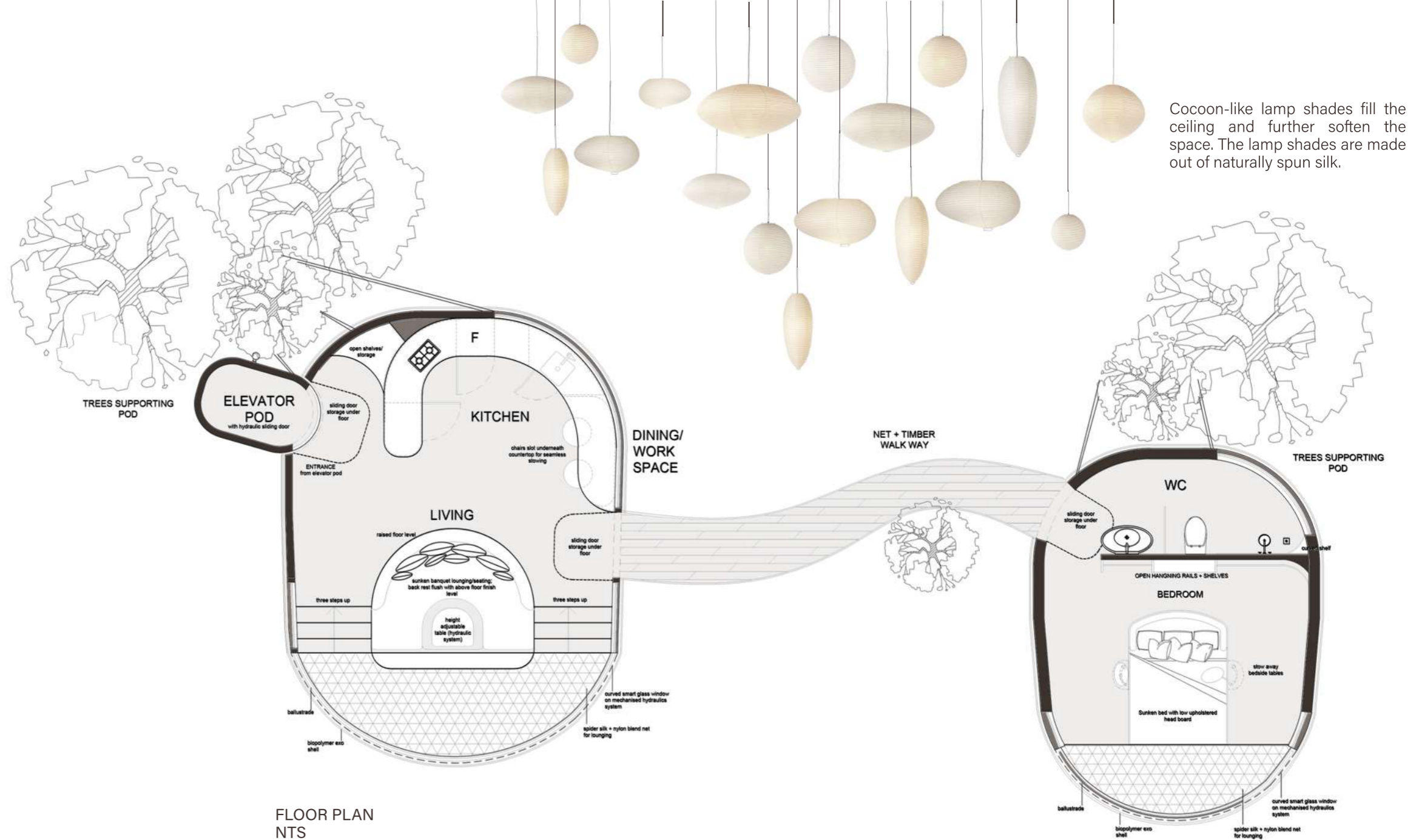
Spider silk woven screens and nets made with technology developed by the Mediated Matter Group.

By influencing silkworms to spin in sheets instead of cocoons, this process of silk production is a cruelty-free and sustainable method of harvesting. Silkworms and humans as co-designers can collaborate to construct architectural-scale structures.



### Organic-form custom furniture

Pieces made from Ecothylene, a form of recycled polycarbonate with a terrazzo-like look.



Cocoon-like lamp shades fill the ceiling and further soften the space. The lamp shades are made out of naturally spun silk.



## 65 TRILL ROAD RESIDENTIAL INTERIOR

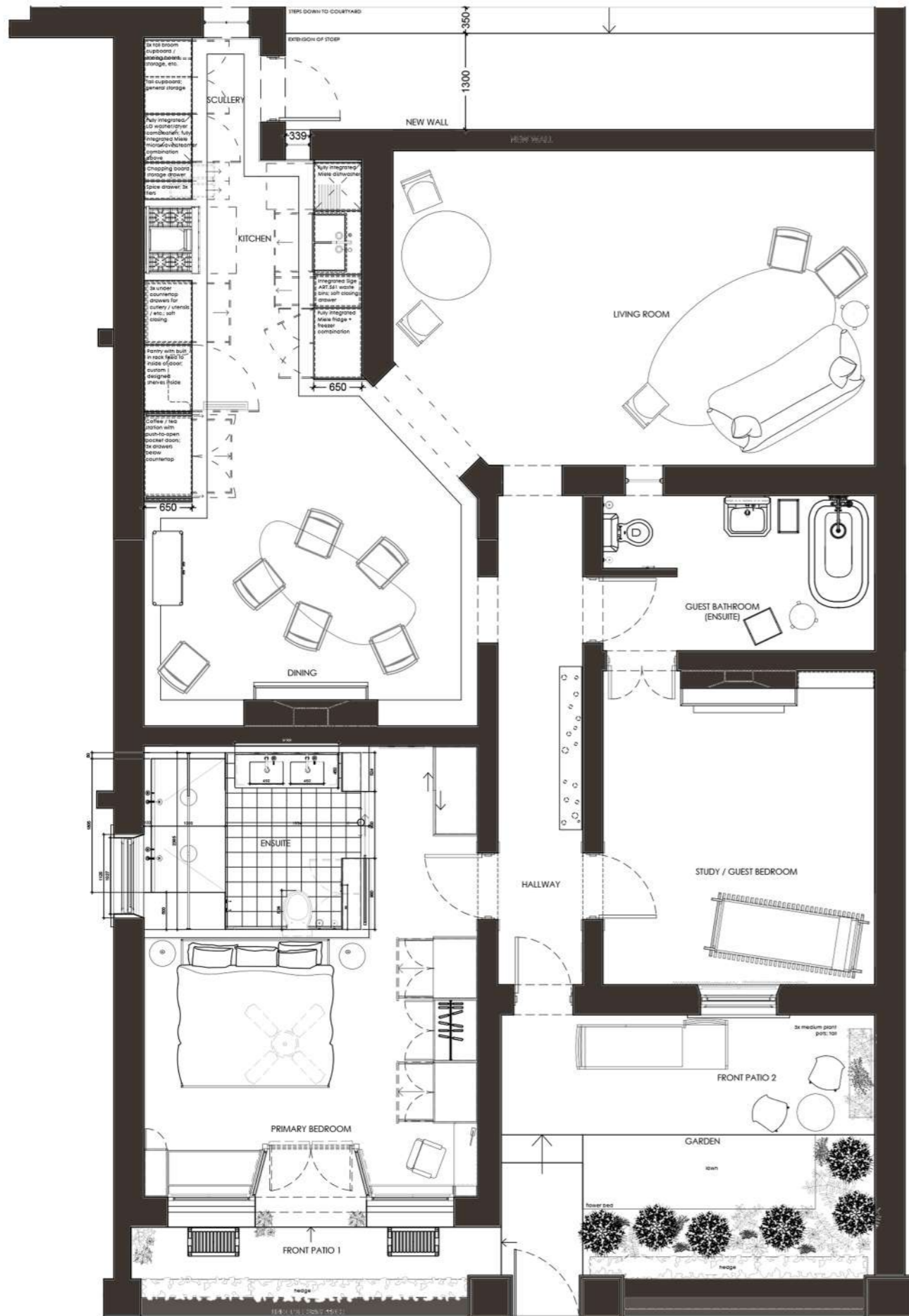
### BRIEF

65 Trill road is an early 20th century victorian style free-standing house. The client is a couple who have purchased the property as a long-term residence. Both people are in their late thirties to mid forties. The wife is a widely published writer and the husband is a financial business executive. Both clients have impeccable taste and a great sense of style. They are looking for an interior that will not date. They like tasteful fusions of modern and classical elements. They lean towards soft sophistication. The clients want a seamless living experience for their home. They want the main bedroom to have a spacious ensuite bathroom and they want a detailed kitchen design.

### CONCEPT

An immaculately restored victorian home with accentuated architectural features like wall and ceiling moulding detail, cornices, arcitraves, etc. Coupled with modern decor and furniture pieces executed with a timeless sense for taste. The overall design is encompassed by timeless sophistication and modern elegance.





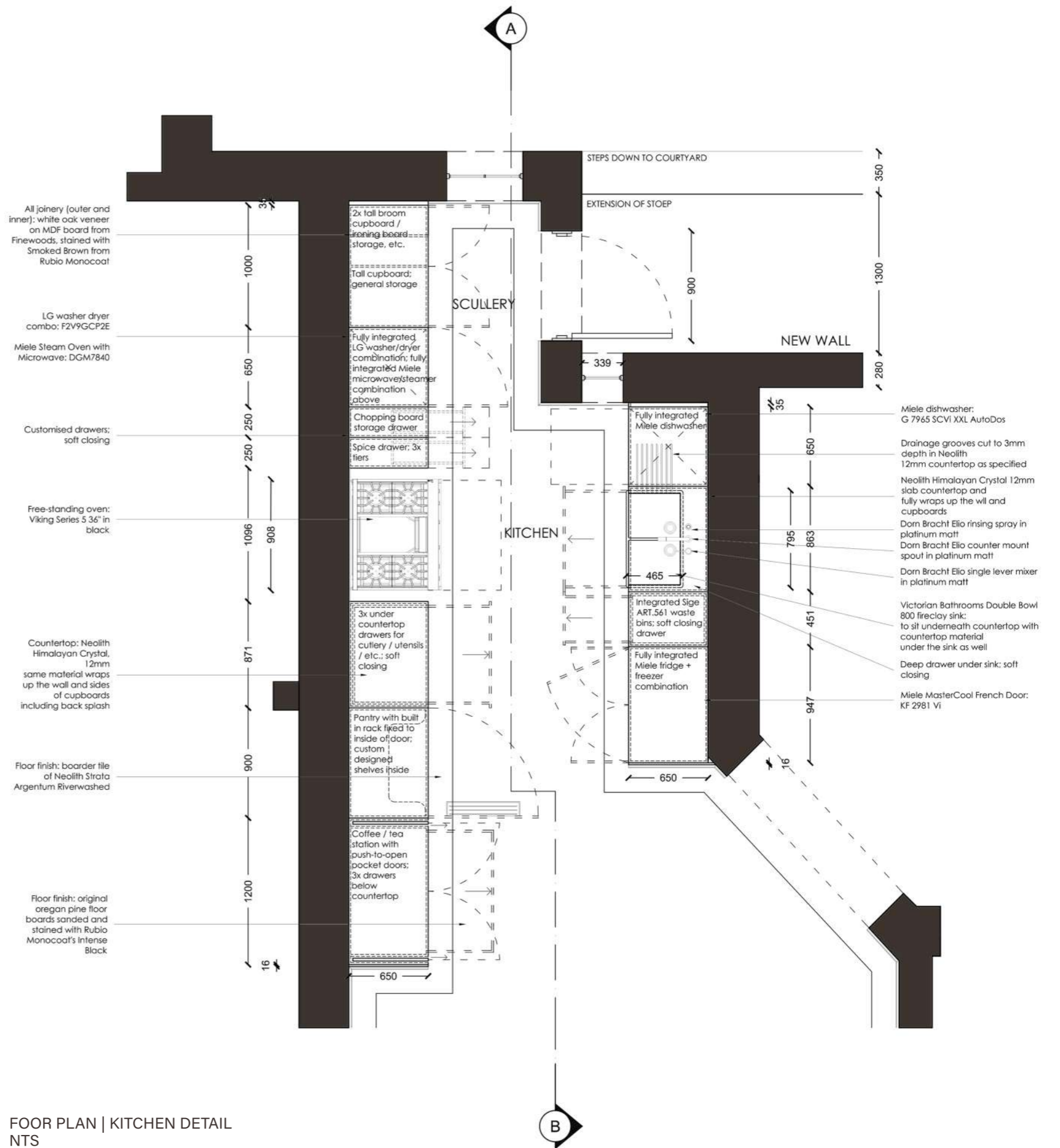
FLOOR PLAN  
NTS



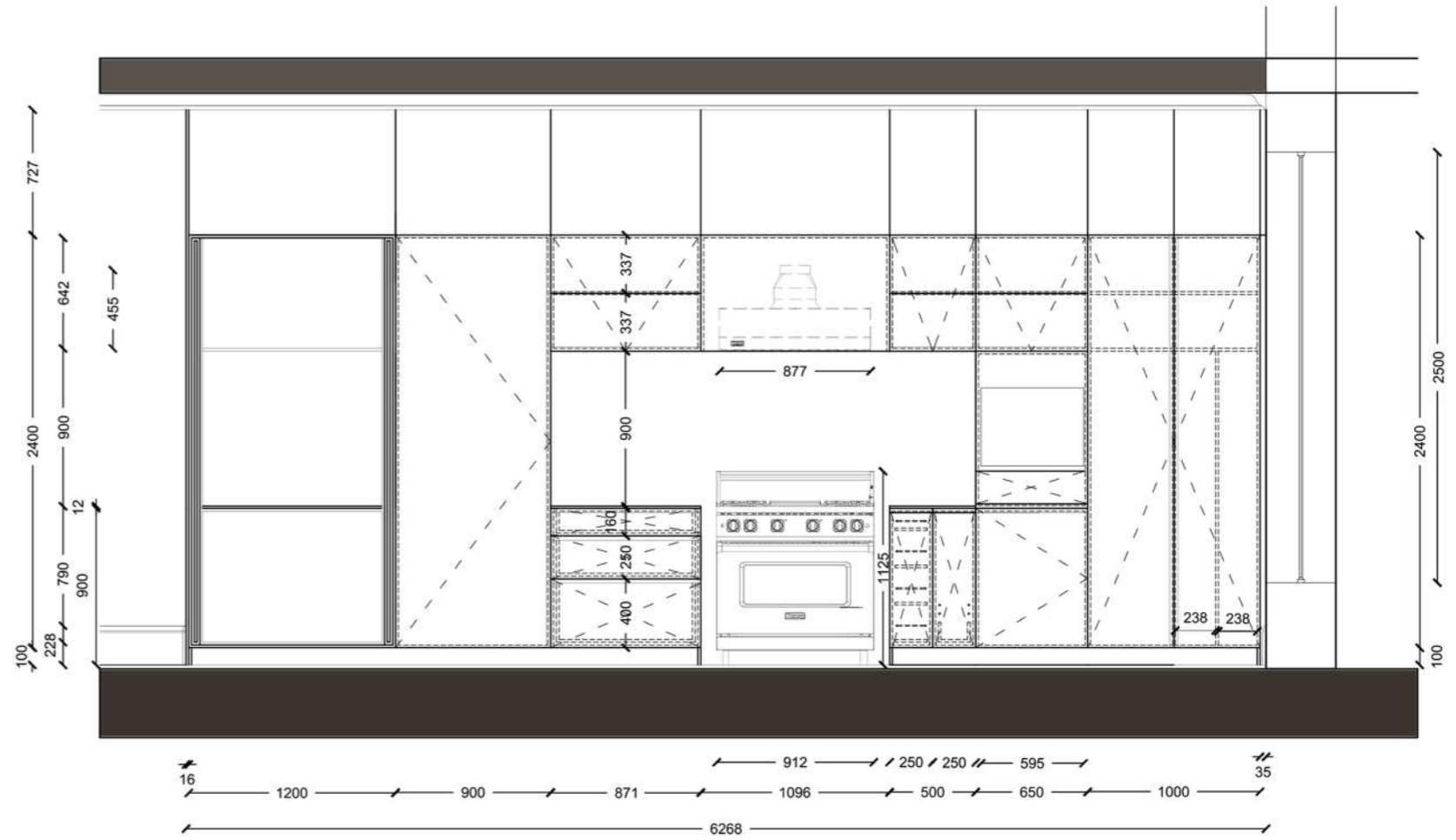
MAIN BEDROOM



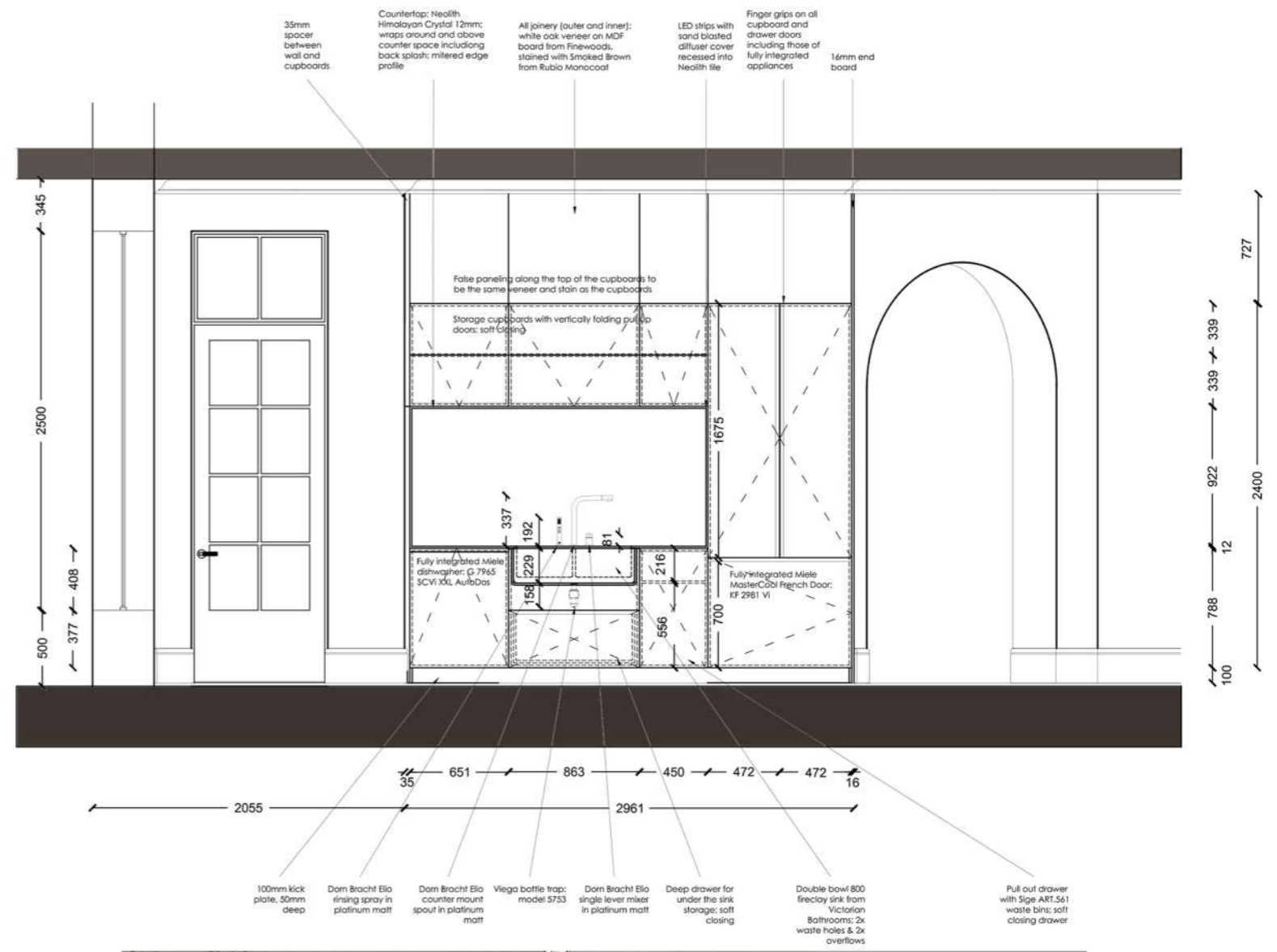
DINING ROOM



FOOR PLAN | KITCHEN DETAIL  
NTS



ELEVATION AA | KITCHEN DETAIL  
NTS



ELEVATION BB | KITCHEN DETAIL  
NTS



## CO.CREATE

### CO-WORKING OFFICE SPACE

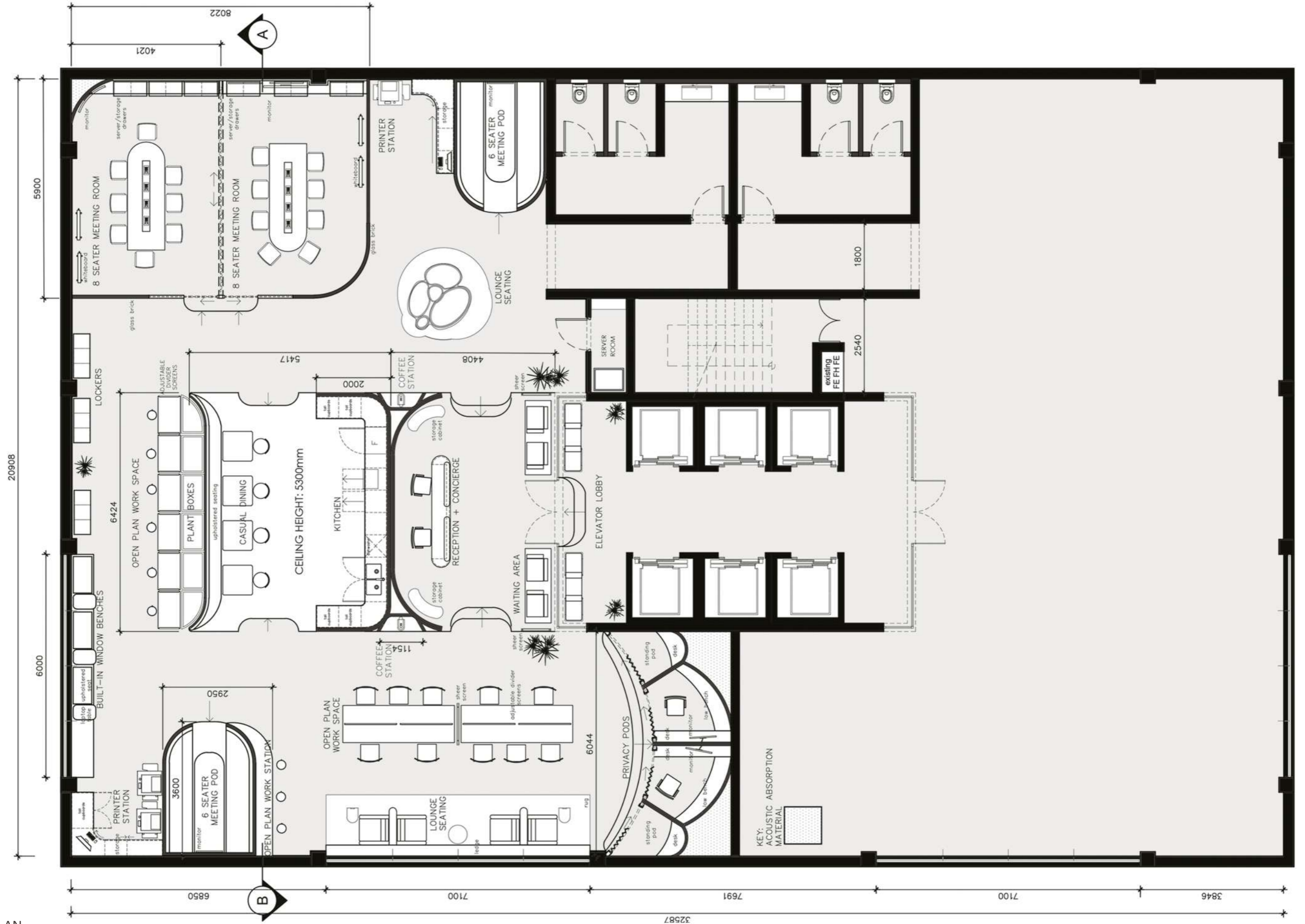
#### BRIEF

Co.Create requires an office design that is energised, daring and playful. A members only environment for like-minded creative professionals – architects, interior, graphic, textile, and product designers alike. The design must consider the needs of “offices of the future” and office spaces in a “post-pandemic” world. The 10th floor space is located in a new development in the Cape Town CBD. The existing floor finish is polished concrete; the existing wall finish is plastered and painted white; the existing ceiling consists of exposed AC ducting and services with suspended track lighting. The client requests that the designer incorporates one of their own surface designs somewhere in the space.

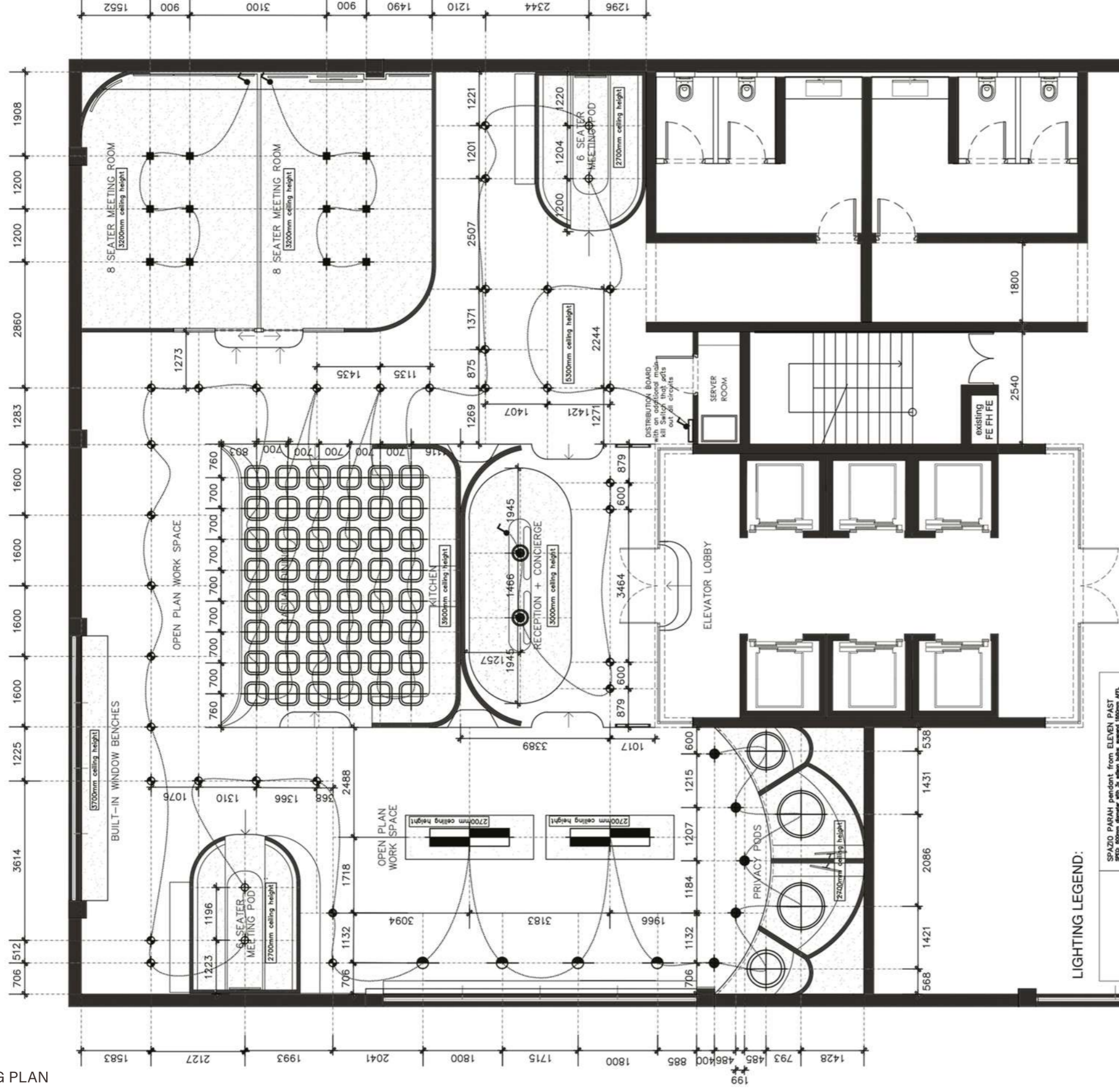
#### CONCEPT

Co.Create is a space for collaboration and creative design. It is a space where members feel that their dynamic and varied work flow needs are thoughtfully met. As such, the key factors of this design are play and practicality. These seemingly opposing ideas interact joyfully and successfully in this design. The flow of the physical space is complimented by organic forms and rounded corners. Play is addressed through the clever use of colour, and indeed, the play on complimentary hues in both bright and muted tones. Materials such as rubber flooring and components, felt clad surfaces, and perforated wood panels serve to vary texture throughout the space as well as provide sound buffers and noise control.

FLOOR PLAN  
NTS



LIGHTING PLAN  
NTS



LIGHTING LEGEND:

	SPAZIO PARAH pendant from ELEVEN PAST SPEC: 600mm diameter with 3x edison bulbs, suspended 1800mm AFL		PAPER CEILING LIGHT, MEDIUM from ELEVEN PAST SPEC: 853mm diameter; built-in LED lamp; dim function
	FRANJA ceiling light from EGO SPEC: steel structure with plastic shade fixed to ceiling frame, suspended 1000mm from bulkhead LED Bulkhead installed		PAPER CEILING LIGHT, LARGE from ELEVEN PAST SPEC: 1060mm diameter; built-in LED lamp; dim function
	ALPICELLA pendant from ELEVEN PAST SPEC: integrated LED bulb, cable and ceiling cup bulkhead, suspended 2500mm AFL		RECESSED DOWNLIGHT LED SLIM 20W 3000K ROUND from EAGLE LIGHTING SPEC: off-white; integrated LED lamp
	SPAZIO PALLA BIANCA pendant from ELEVEN PAST SPEC: 200mm diameter acrylic shade with edison bulb, suspended 2700mm AFL		SPOT TRACK ROUND 1LT GU10 2WIRE WHITE from EAGLE LIGHTING SPEC: 1x LED Lamp; to be mounted on track
	FAVOR pendant from ELEVEN PAST SPEC: aluminum structure, built-in LED lamp, suspended 2700mm AFL		1-WAY SWITCH SPEC: ARTECOR 1 lever switch; magnesium finish
	DOLMEN SUSPENSION LAMP, FOSCARINI from CREMA SPEC: orange; suspend 2400mm AFL		SKIMMED AND PAINTED PLASTERBOARD BULKHEADS; WALL-TO-WALL CEILINGS WITH 25mm SHADOW LINE TRIM; ALL ROUND, PAINTED WHITE





ELEVATOR LOBBY



RECEPTION



OPEN PLAN WORK SPACE



SCREEN DETAILS



CONJOINING CONFERENCE ROOMS

## FRANKIE'S DINER

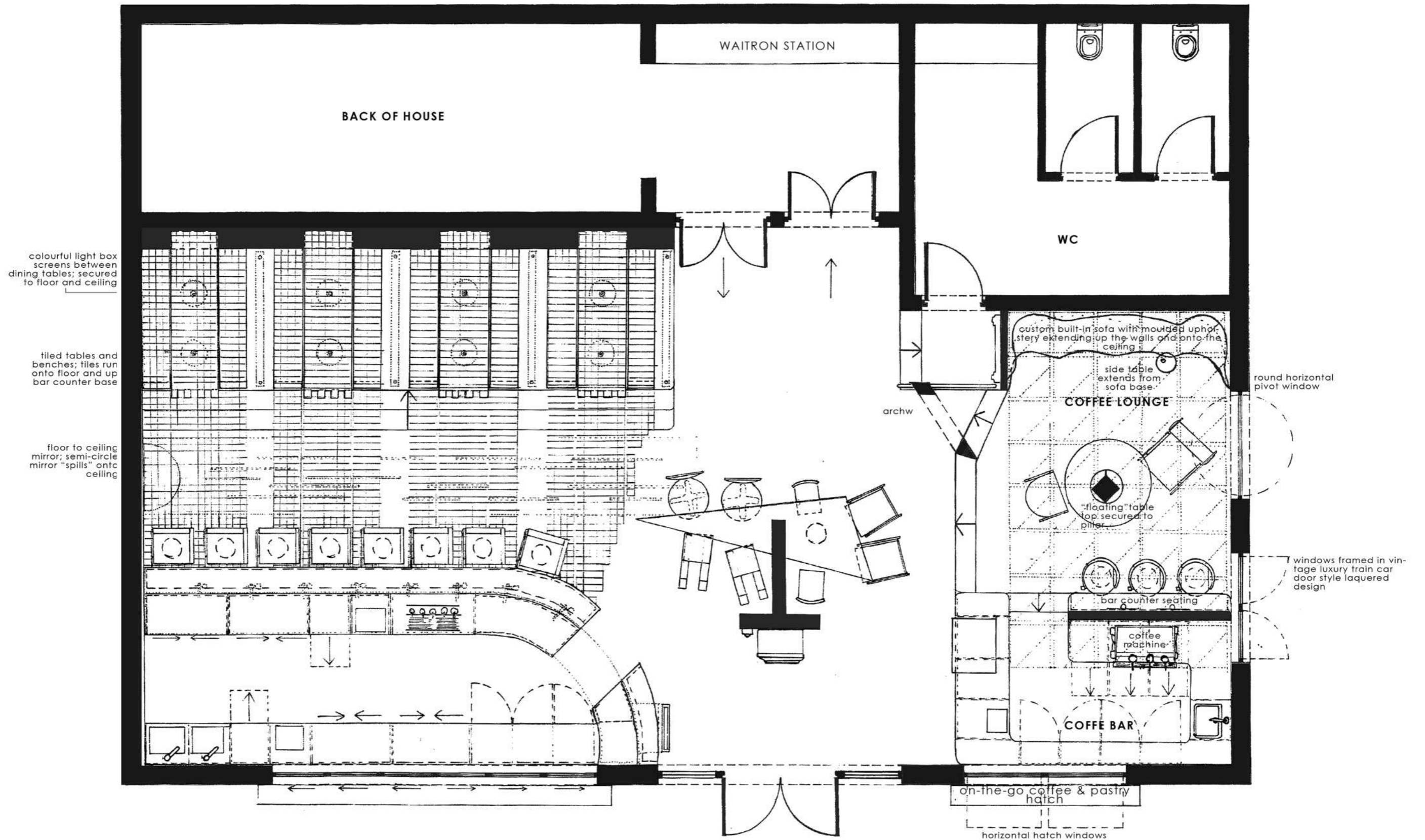
### MEMPHIS INSPIRED DINER

#### BRIEF

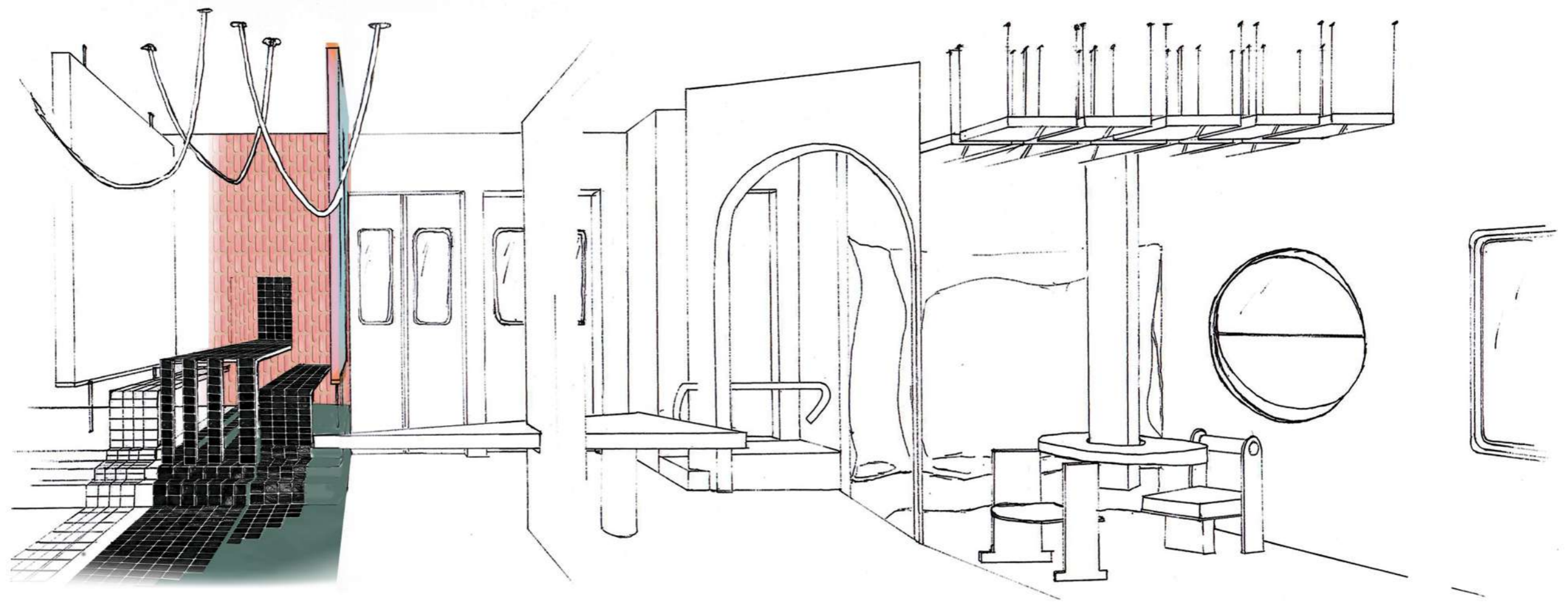
Redesign the traditional "1950s old school American-style diner" into a trendy Memphis-meets-retro interior that celebrates only delightfully bold, fun, and edgy design.  
The interior design must include a bar and a variety of seating configurations.

#### CONCEPT

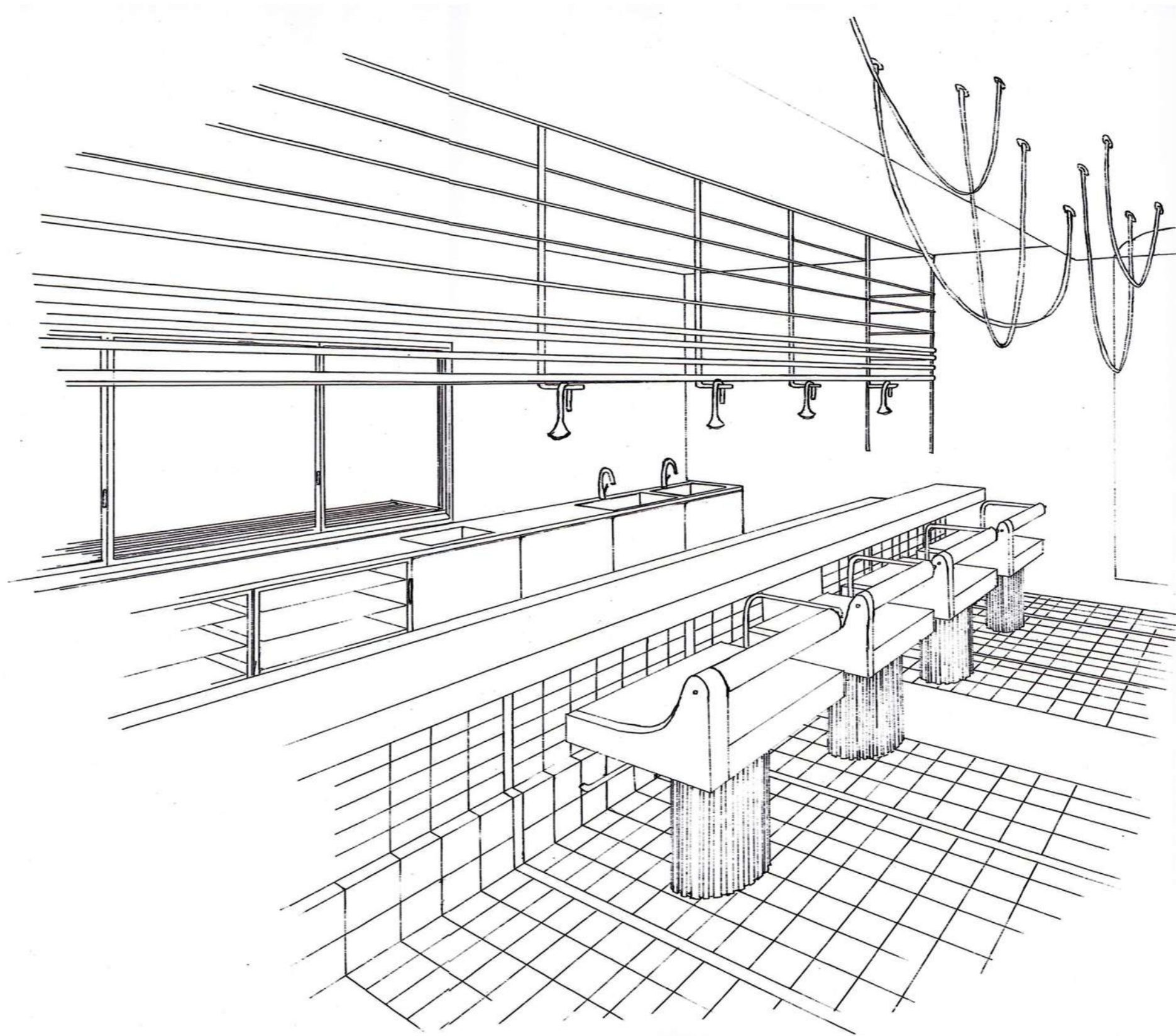
Frankie's diner transports you to a mystical, busy and bustling world of visual and tactile excitement. The space is completely inspired by design from the daring and ever exciting Memphis movement of the '80s. Particular inspiration is taken from designers Ettore Sottsass, Martine Bedin, and Peter Shire.  
As you dine, so do your senses feast on bold colour combinations, eccentric pattern play, and tantalizing texture use.



**FRANKIE'S DINER FLOOR PLAN**  
NTS



ENTRANCE  
ONE POINT PERSPECTIVE  
NTS



BAR  
TWO POINT PERSPECTIVE  
NTS



## PRODUCT DESIGN

EXPOSED  
pendant light design

WE BRING THE SAUCE  
condiments server

CONFIGURE  
candle holder

EXPLODED  
stool upcycle

textile design

## EXPOSED

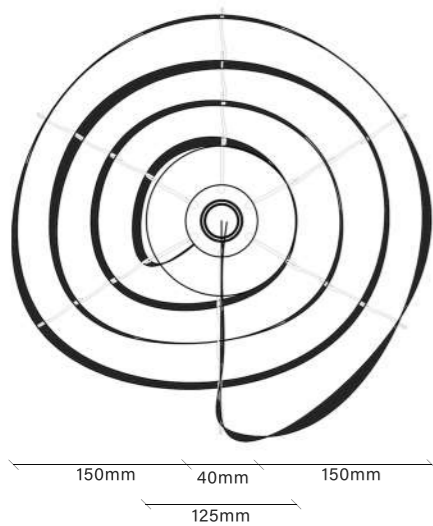
The brief specified a pendant light design that celebrates the cable i.e. the cable is not just the hanging mechanism, but a key feature to the conceptual design.

Exposed takes its inspiration from the live cable that gives it both form and light. A figure appears. It is bare and stripped. The vibrant red fabric covered cable winds around the light source, braced by the brassy brackets. It forms a shallow dish in which the light pools. The light shines warmly onto its surroundings.

Exposed looks good hanging lower than your typical pendant lamp. She makes a cosy companion for your favourite deep reading chair or your bed-side. This light draws you into a space. It speaks to weightlessness as it hovers in space, the cable disappearing into the ceiling.



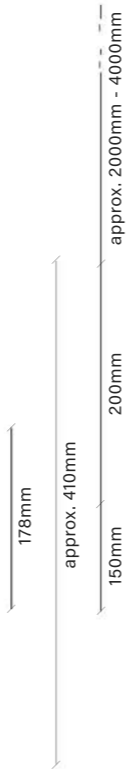




PLAN  
NTS



ELEVATION  
NTS



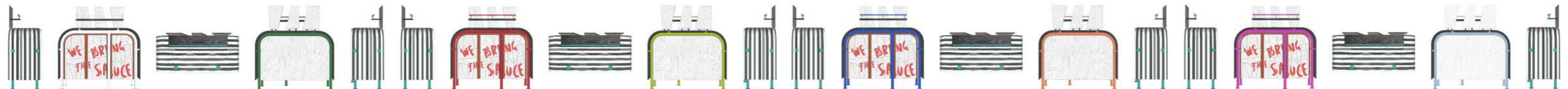
MOCK UP IMAGES showing EXPOSED IN SITU. The light can be made using different cable colours to suit any style and interior. The light can be assembled as a system of two or more in various ways.



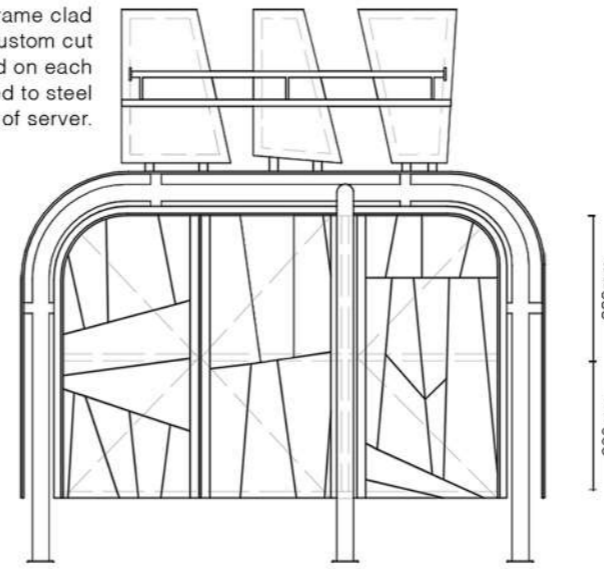
# "WE BRING THE SAUCE"

The Nando's Hot Young Designer competition 2022 asked entrants to design a condiments server to display the brand's iconic Peri Peri sauces. The unit must be vibrant yet functional - the sauces must be visible and accessible to customers. In true Nando's style the server should also be a conversation piece. Serve us a server!

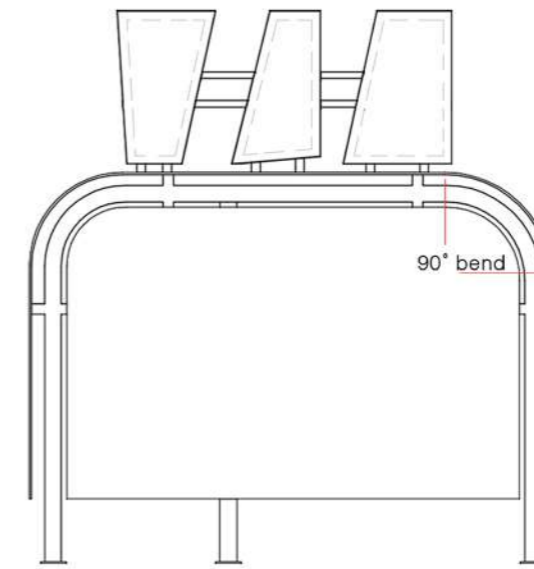
Vibrant, quirky, fun. Bold, bright, and showstopper. This saucy server is not apologising since it brings you everything you need to spice up your meal. In true Nando's spirit, this server makes an impression and stands its ground. It brings the hot energy. It brings you the sauce.



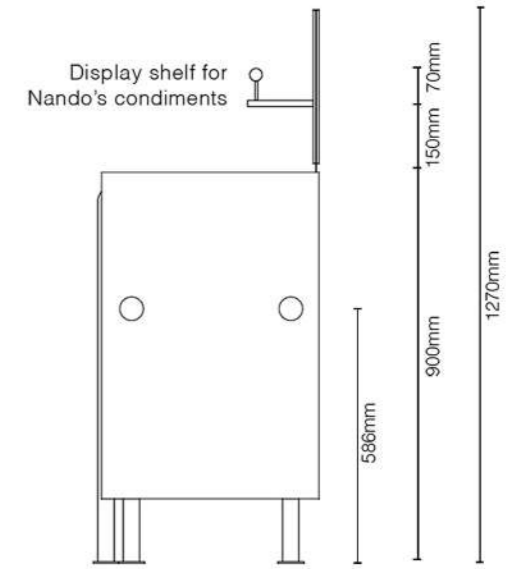
3mm steel frame clad with 6mm custom cut plywood on each side; affixed to steel frame of server.



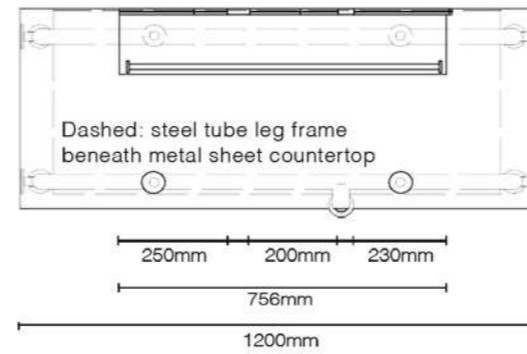
Front elevation | NTS



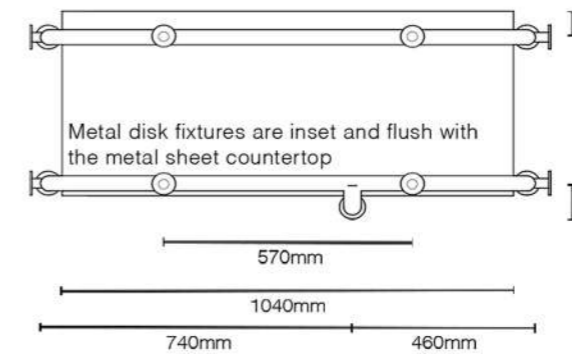
Back elevation | NTS



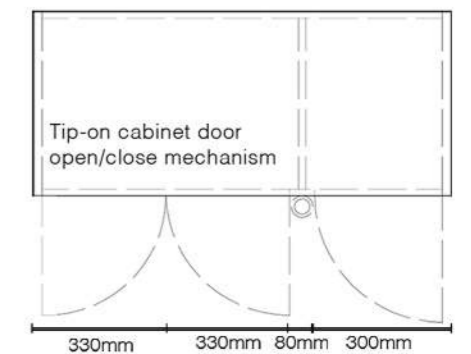
Side elevation | NTS



Plan | NTS



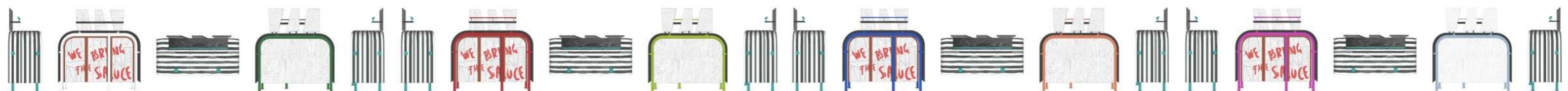
Plan (leg structure) | NTS



Plan (cabinet below countertop) | NTS



ALTERNATIVE COLOUR WAYS



## CONFIGURE

The brief required the design of a candle holder with on-trend qualities that would be fit for the retail market.

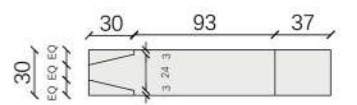
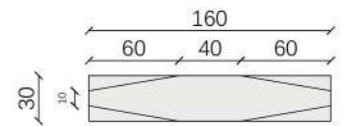
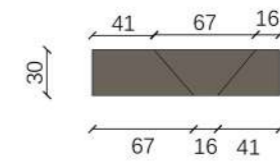
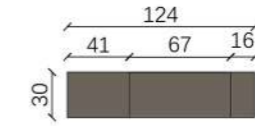
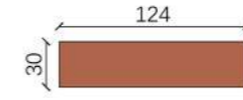
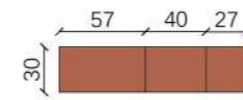
The constraints: minimum height 300mm, maximum height 500mm, must hold a pillar candle with 50mm or 70mm diameter and 100mm height.

CONFIGURE is an interactive object. This candle holder can be put together in several different configurations, giving it unique appeal. It reveals a contrast in rigidity of form and a capacity for change and movement.

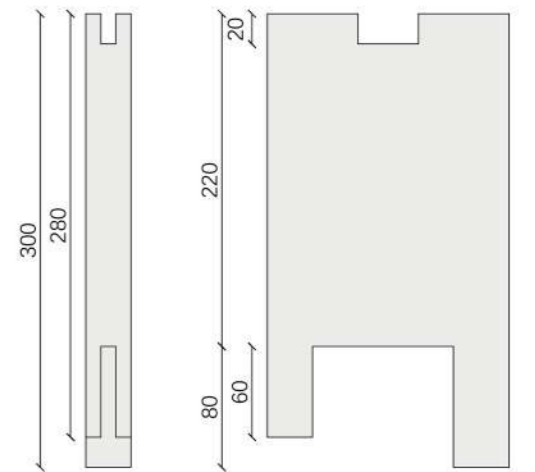
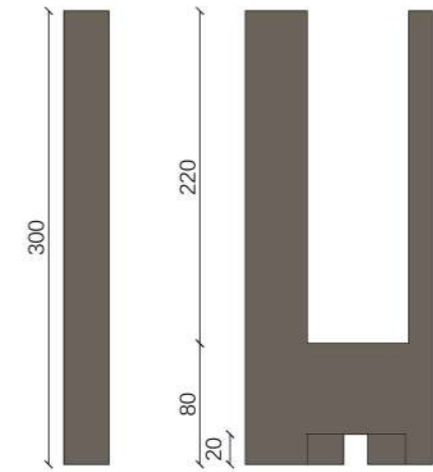
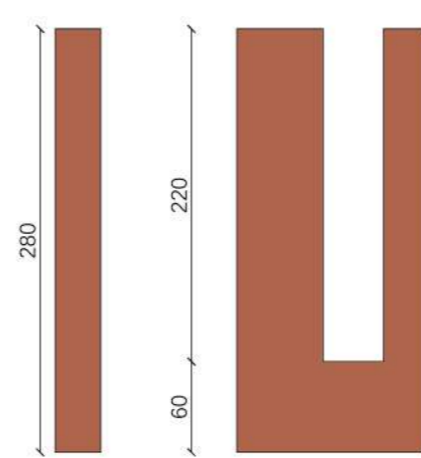
Individually or as one, the four components' hard, rigid forms soften under the warm glow of candle light. Over time, CONFIGURE experiences the wear and tear of vibrant dinner parties, calm, quiet nights, and curious admirers. The molten wax drips down the smooth rock surfaces; it collects in small fractures and crevices accrued along the way.

This is to say that this candle holder embraces the changes that use and time afford.





PLAN  
NTS

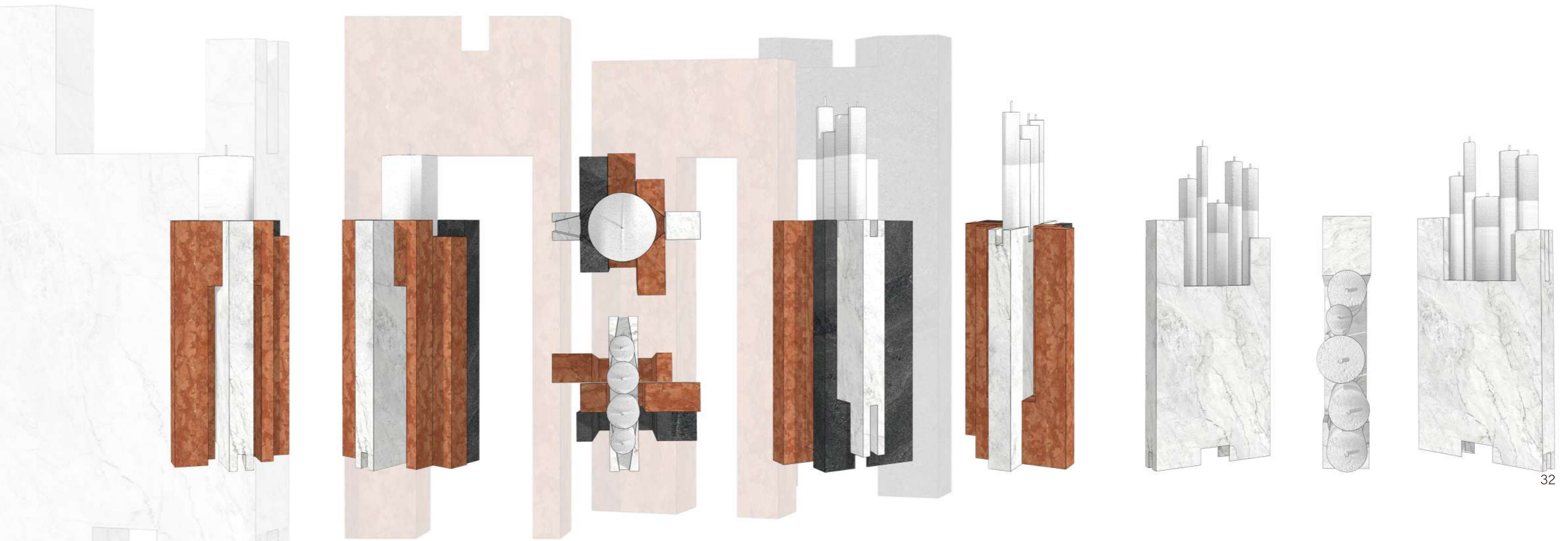


COMPONENT A

(2x) COMPONENT B

COMPONENT C

PLANS AND ELEVATIONS  
NTS



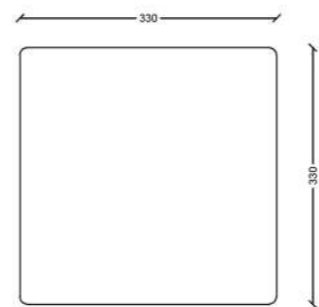
## EXPLODED

The task is to upcycle and breathe new life into a simple timber stool. This project provides you with the opportunity to transform an existing, but tired stool into something fresh, relevant and exciting. The piece must be unique and globally trend worthy. The product should have commercial value. A WOW factor is essential.

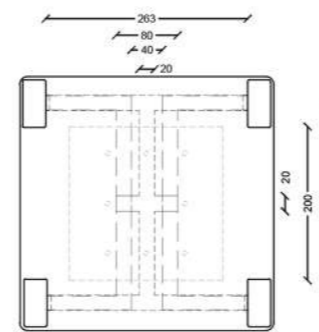
Design constraint: No less than 60% of the stool's existing structure must remain in the final product.

EXPLODED is a bespoke steel and timber stool. From a simple stool design to something of a new-age industrial notion of modernity. EXPLODED challenges conventional design of the everyday sitting stool.





TOP VIEW



UNDERSIDE VIEW



FRONT ELEVATION

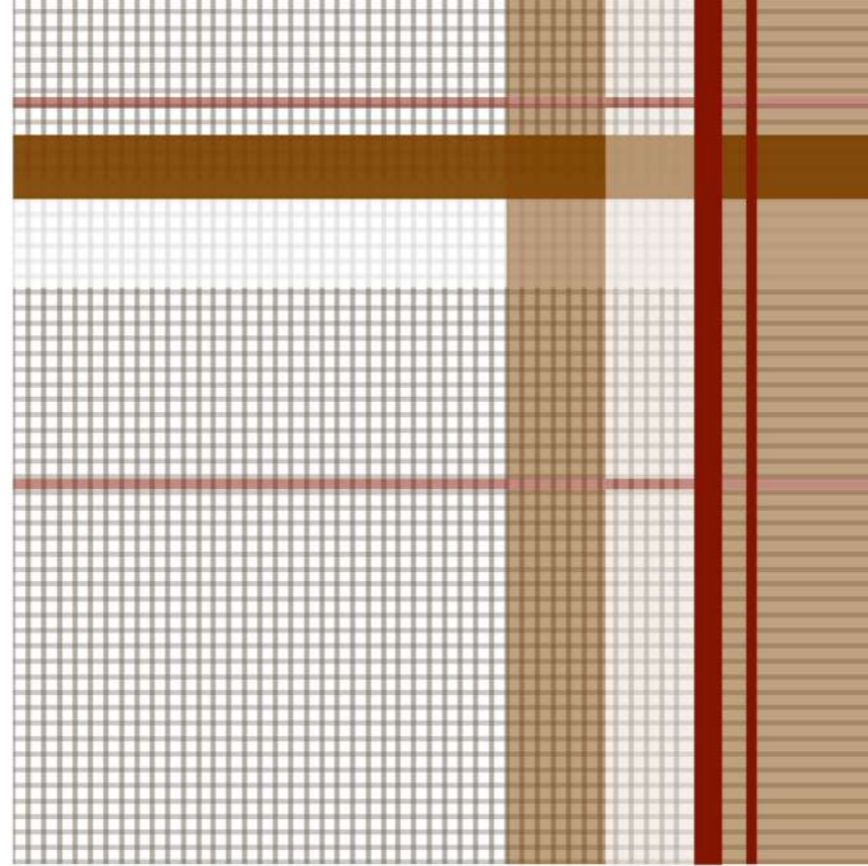


SIDE ELEVATION

## TEXTILE DESIGN

The textile or surface design must measure 200mmx200mm and it must be able to repeat seamlessly.

Two designs were explored. Tartan weave and tutti fruity.



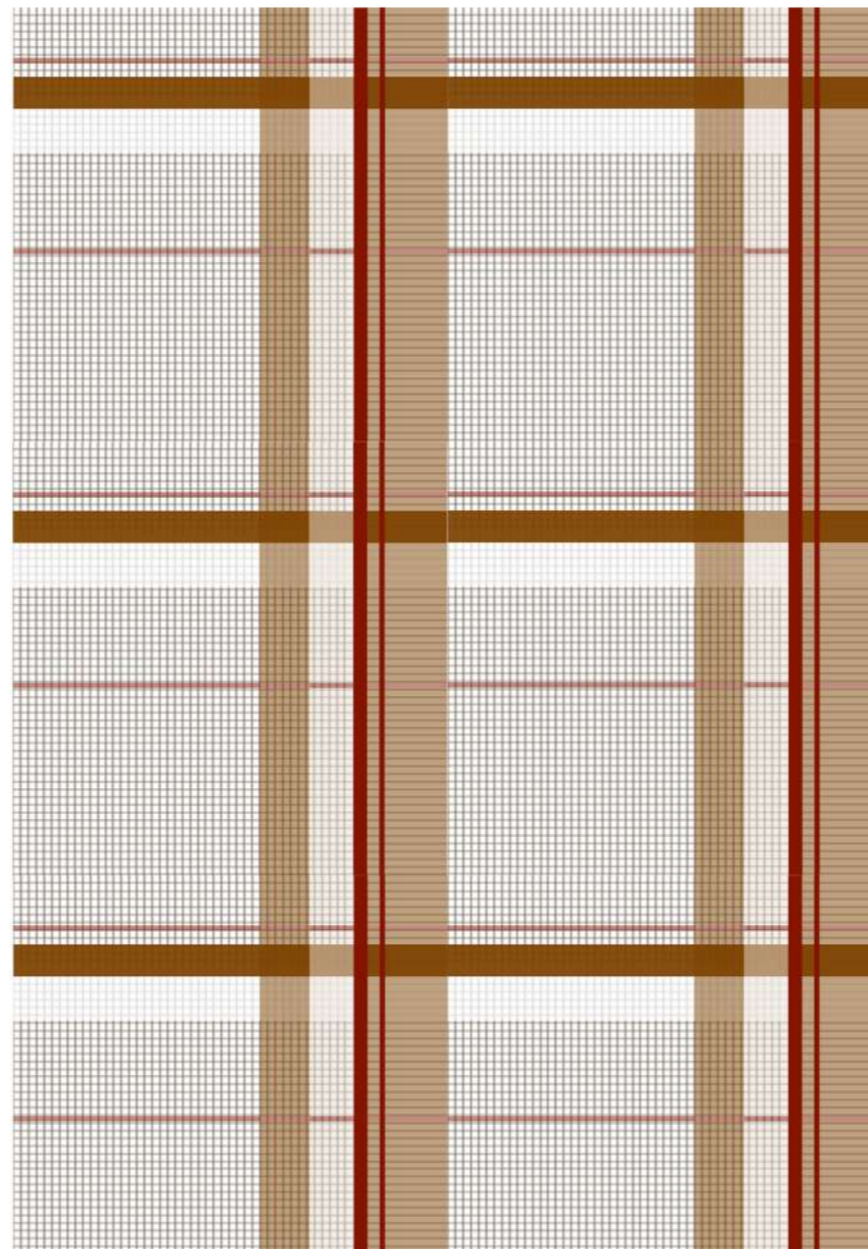
SCALE 1:1

The tartan weave is naturally inspired by traditional Scottish tartan design. It is intended to add timeless style to any fabric, piece of clothing or other surface. It can easily be modified to satisfy specific colour preferences.



SCALE 1:1

The tutti fruity design takes a black line drawing of the cross section of a sweet pepper and places it on top of a close up stylised interpretation of the pith of the sweet pepper.



SCALE 1:4



SCALE 1:4





## WE WEAVE CAPE LOOMS MURAL

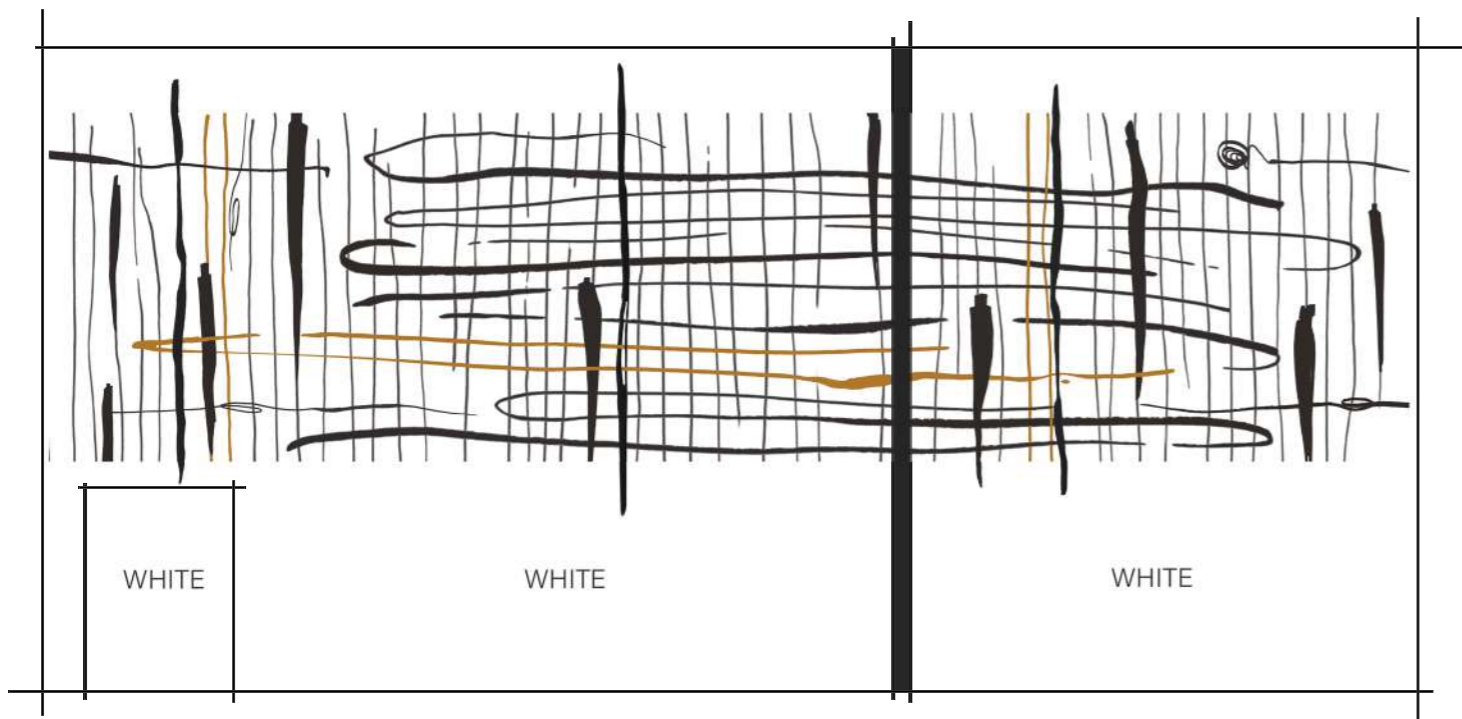
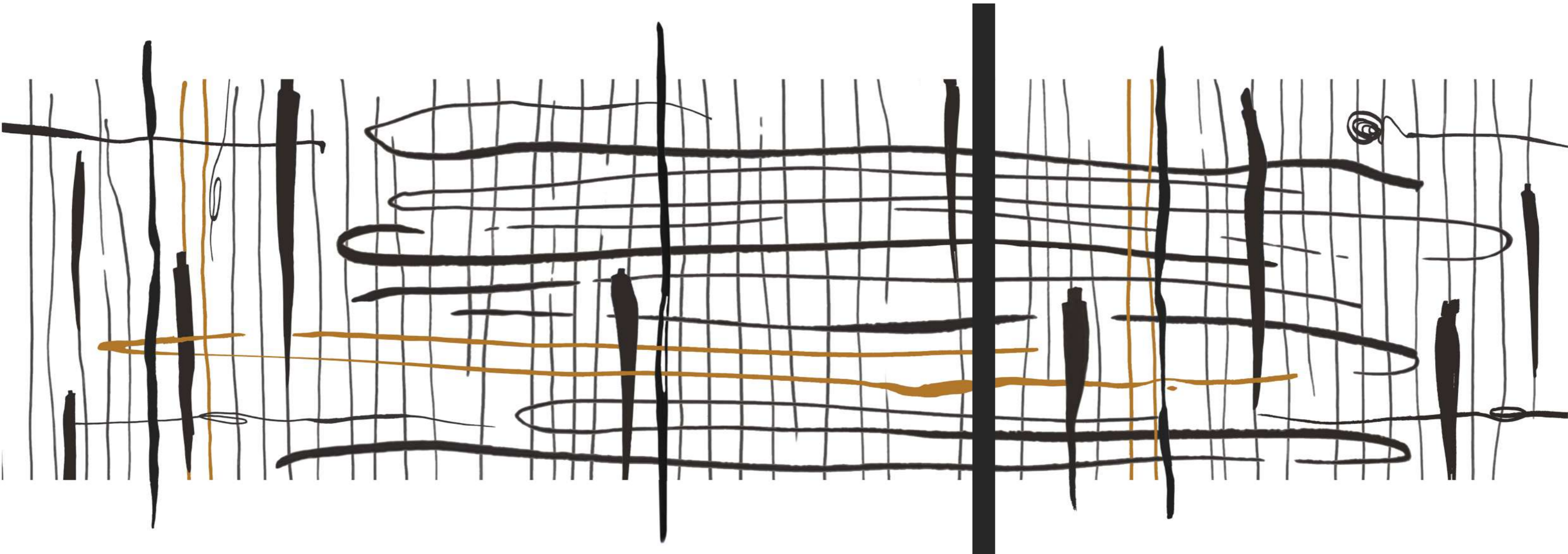
### BRIEF

Justin van Breda's Cape Looms held a competition to create a mural for their first workspace. The brief requires that the mural represent the ethos, fibers, and community of the new company. It must be at once modern and also hint at their history and brand associations. It will hang in the workshop above the biggest loom which is 6.5m wide. The mural will need to be 3m tall and 11.6m wide

### CONCEPT

This mural depicts an abstraction of the woven piece, the warps and wefts and the people who breathe life into them, honouring the history of the centuries old craft. The vertical and horizontal linear qualities of the weaving yarn interact harmoniously with the organic figures. As such, the movement of the soft, textured charcoal tones speaks to the actual passage of time of the craft. We look back from our present to its storied past, gleaming all that we can learn; we stand in this moment too and see the future for which we are crafting in the now.





WHITE

WHITE

WHITE

↑ CHARCOAL | PANTONE 426 C

**ELLERMAN HOUSE**  
PHOTOGRAPHY WORKSHOP

**BRIEF**

Take three photos at the location, Ellerman House Hotel, Bantry Bay.

One photograph of each of the following subjects:

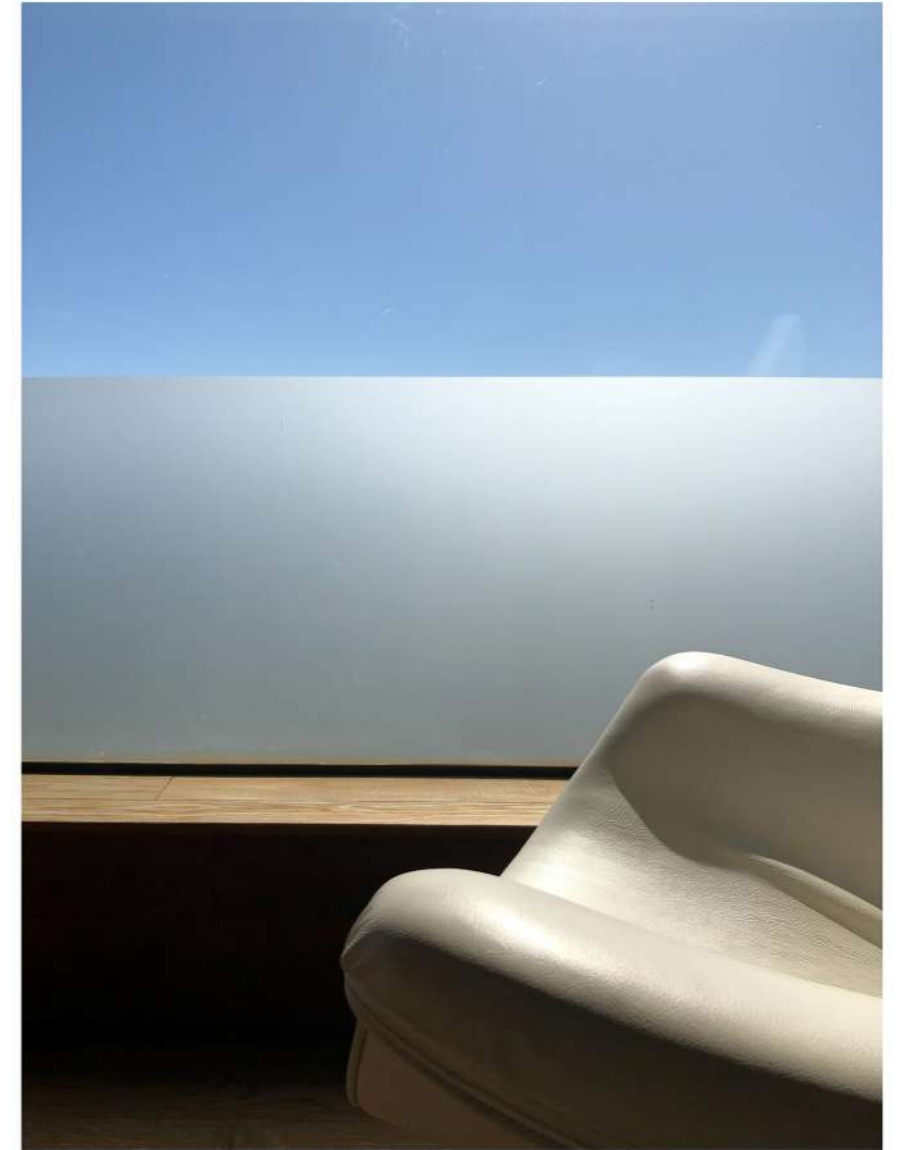
1. Interior
2. Exterior
3. Detail



INTERIOR



EXTERIOR



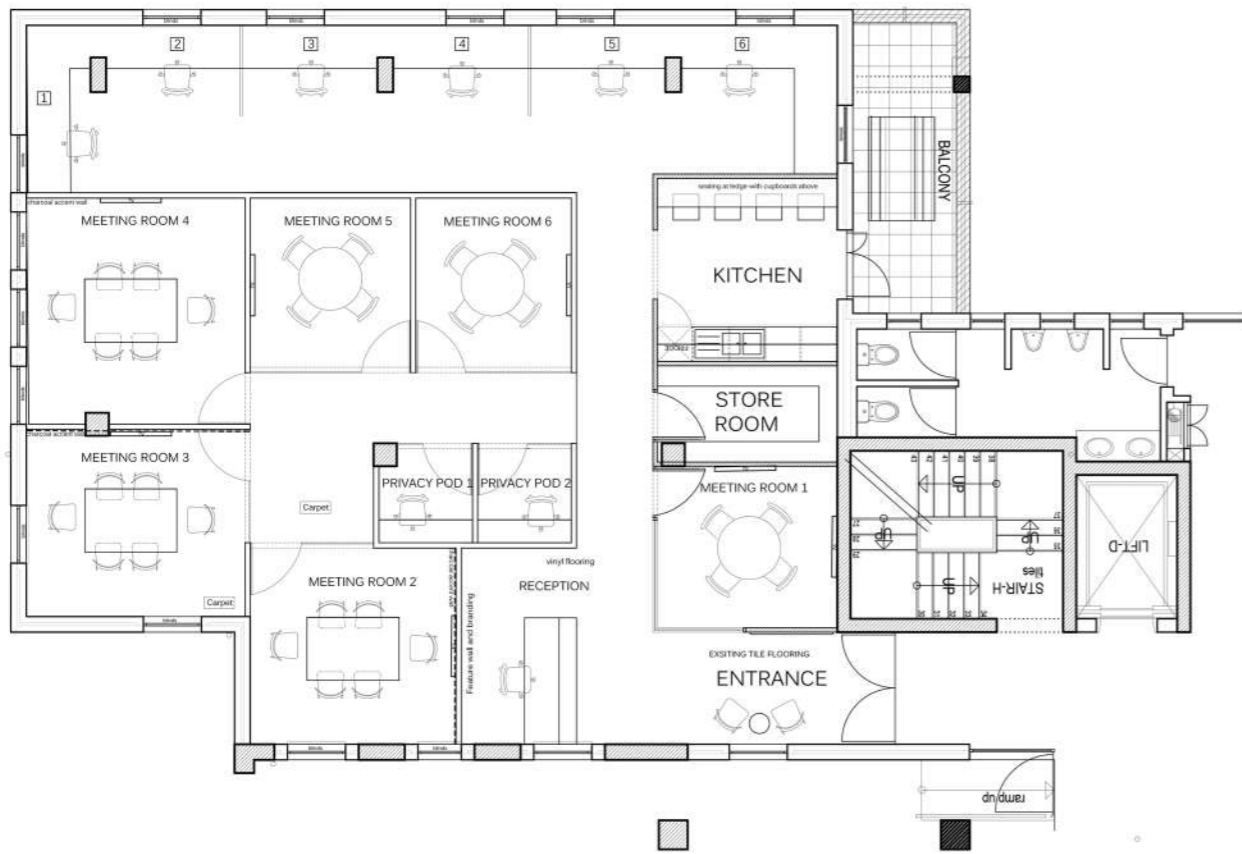
DETAIL

**WORKING DRAWING PACKAGE**  
TECHNICAL DRAWINGS

**BRIEF**

Compile a detailed working drawing package for the client's new office space consisting of the following drawings:

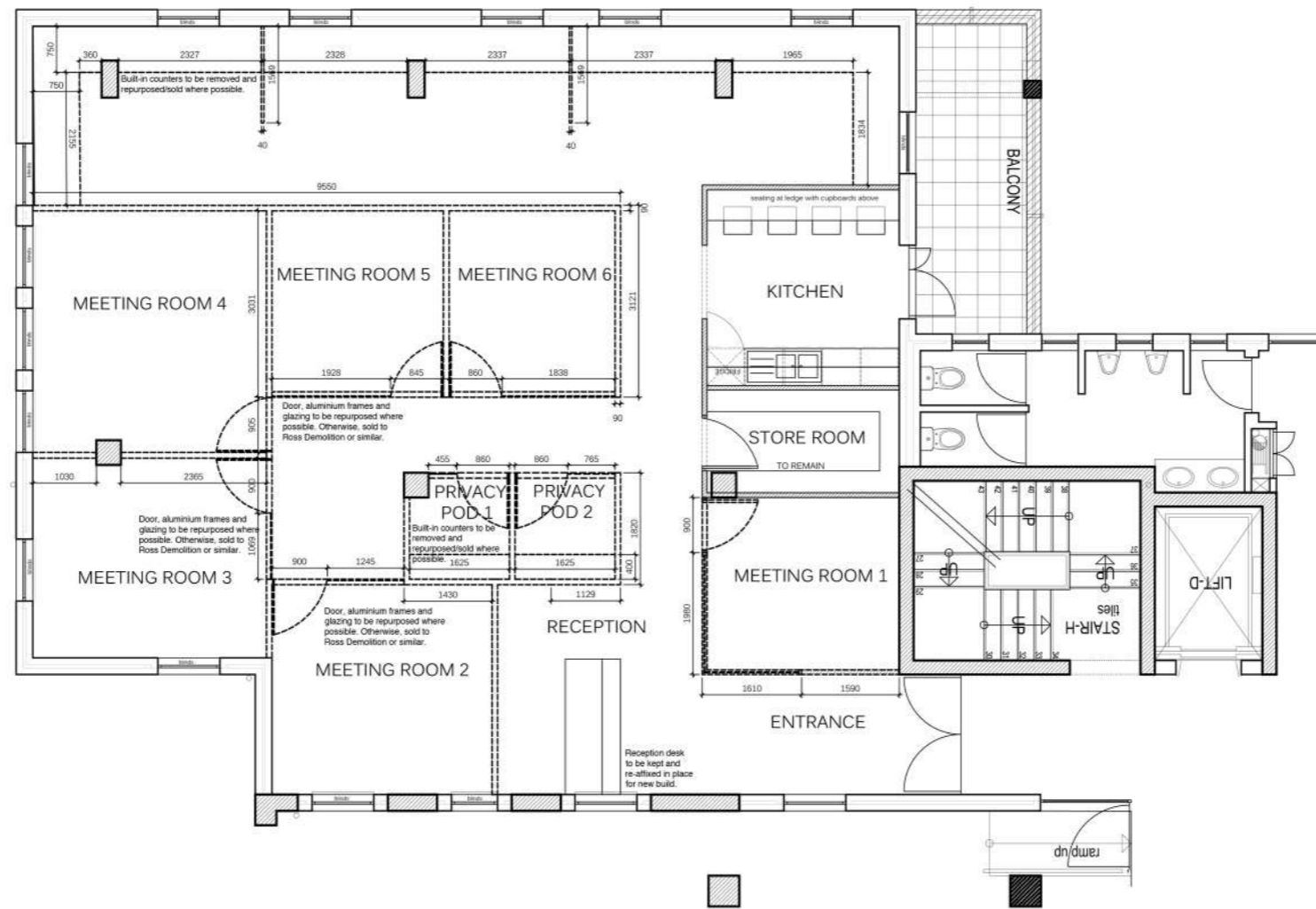
- Demolition plan
- New build work plan
- Window and door schedule
- Floor finishes layout
- Data and electrical layout
- Lighting layout
- Finishing schedule



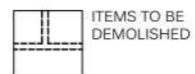
EXISTING OFFICES  
NTS



OFFICE FOR NEW CLIENTS  
NEW MEETING ROOMS  
NTS



**DEMOLITION PLAN OF EXISTING OFFICES**  
SCALE 1:100



**TRADE NOTES**

Copyright over all design and drawings shall remain the intellectual property of Design Time Studio and any provision to the contrary in terms of the Copyright Act No. 62 of 1978 is hereby specifically excluded.

Reproduction of this drawing or design and/or any portion thereof, other than in terms of the Copyright/Design/Invention Agreement, is strictly prohibited.

Contractor and subcontractors to verify all levels, heights and dimensions on site, and to check same against the drawings, before putting any work in hand.

Quality of all materials and workmanship to comply with the relevant SANS and BBS specifications.

The contractor is responsible for correct setting out on the specified works.

Contractor are to ensure that all details shown on this drawing are in complete compliance with local authority by-laws and regulations.

Contractor are to locate and identify existing services, and are to protect these from damage throughout the duration of work.

Contractor shall be responsible for ensuring the structural stability of all components of their work and ascertain that the main structure is capable of supporting all loads applied thereto.

Contractor are to ensure that their work, on site, is adequately protected at all times, during construction, and the responsibility for any damages incurred to the contractor and/or third party due to the contractor and subcontractors are to ensure that all components, glazing panels and structural items through all openings, windows and etc.

This drawing is not to be used. Figured dimensions are to be used at all times.

Any queries or variations arising from any of the above, must be reported to Design Time Studio for distribution prior to the commencement of any work.

**DRAWING NOTES**

DRAWING NOTES

**REVISIONS**

Item	date	description
3	22.08.16	DEMOLITION

Project title  
**WORKING DRAWING PACKAGE TASK**

Drawing description  
**DEMOLITION**

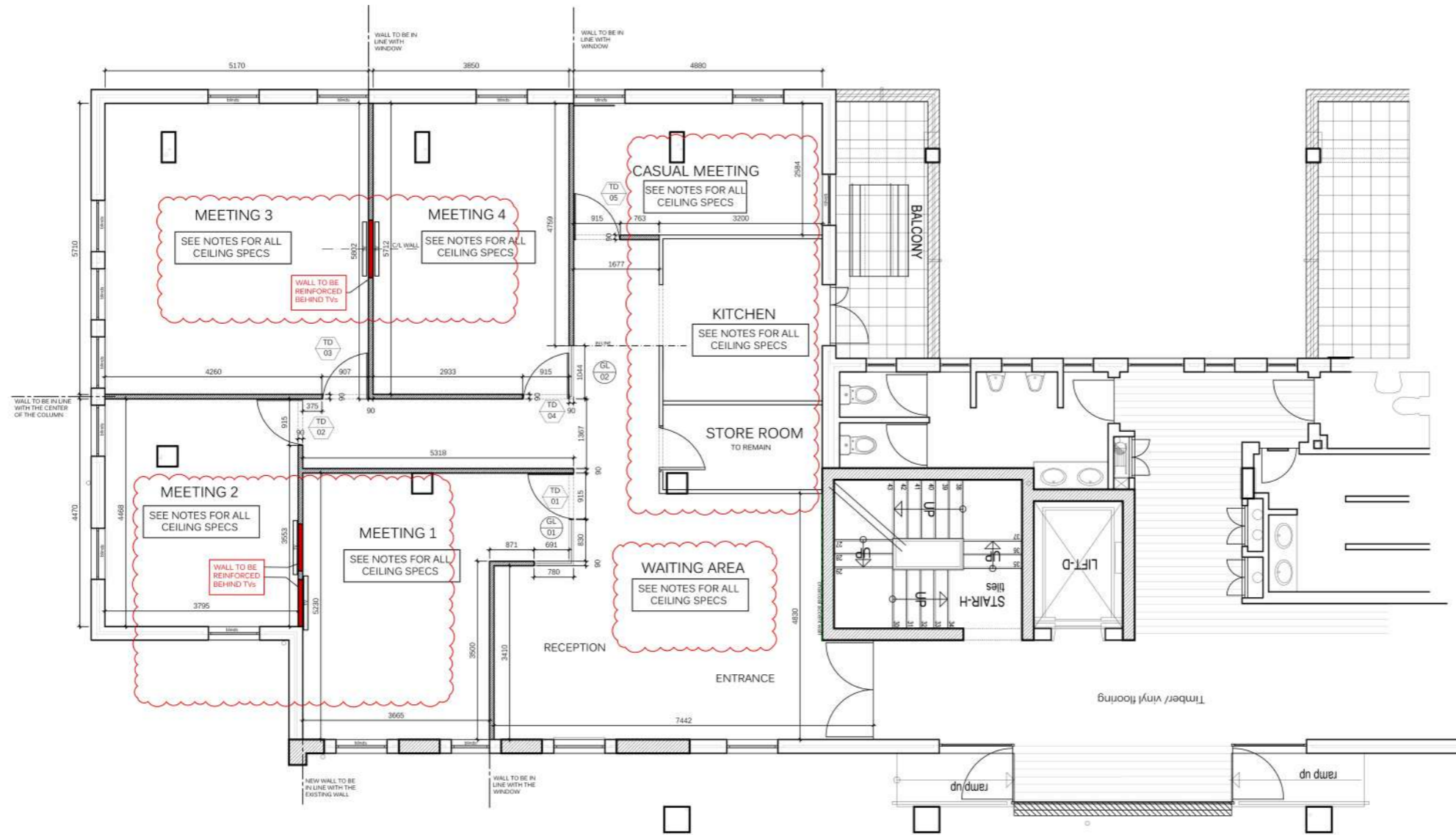
drawing number **10.1** scale **1:100**

project number **10** date **2022.08.16**




designer **SARAH BRINK** revision **3**

client approval





**NEW BUILDWORK PLAN OF OFFICE LAYOUT  
NEW MEETING ROOMS**  
SCALE 1:100

-  NEW 90mm DRYWALL with Insulation as per Spec. below
-  EXISTING 90mm brick walls to remain
-  EXISTING concrete columns to remain

**NOTES:**

1. Drywall positions to be marked on site and confirmed with Designer prior to installation.
2. All ceiling tiles to be replaced with new as per spec schedule. Refer.
3. Timber doors and aluminium windows as per Window and Door schedule.
4. All ceilings to have a 25mm Dorrn Plasterboard Shadow line edge trim in white, to be used throughout office where Drywall meets with ceiling.
5. Builder to quote on painting all walls (new and existing) with 2 coats of Plascon Double velvet - Colour tbc.
6. Skirting details on Floor Finishes layout.

**DRYWALL WITH SOUND INSULATION TO ALL OFFICE AREAS**

Rhino-Drywall partitioning shall comprise steel studding formed of 83.5mm top and bottom tracks with vertical studs at maximum 500mm centres, friction fitted or pop riveted to the top and bottom tracks with similar additional vertical studs as necessary at abutments, ends, etc. and covered as described with wallboard screwed to studding with Drywall screws at maximum 220mm centres. Boards are to be butt jointed and finished with Rhino tape and Ready mix D jointing compound all in accordance with the manufacturer's instructions. Insert Rhinofam Insulmat mineral fibre blanket in cavity.

**TRADE NOTES**

Copyright over all design and drawings shall remain the intellectual property of Design Time Studio and any provision to the contrary in terms of the Copyright Act No. 62 of 2002 is hereby specifically excluded.  
 Reproduction of this drawing or design and/or any portion thereof, other than in terms of the Client/Designer Agreement, is strictly prohibited.  
 Contractors and subcontractors to verify all levels, heights and dimensions on site, and to check same against the drawings before putting any work in hand.  
 Quality of all materials and workmanship to comply with the relevant SABS and BSS specifications.  
 The contractor is responsible for correct setting out on the specified works.  
 Contractors are to ensure that all details shown on this drawing are in complete compliance with local authority by-laws and regulations.  
 Contractors are to locate and identify existing services on site, and are to protect these from damage throughout the duration of work.  
 Contractors shall be responsible for ensuring the structural stability of all components of their work and ascertain that the main structure is capable of supporting all loads applied thereto.  
 Contractors are to ensure that their work, on site, is adequately protected at all times during construction, and the responsibility for any damages incurred lies with the contractor until such time as the site contractor and subcontractors are to ensure that all components, glazing panels and structural items fit through all doorways, openings and etc.  
 This drawing is not to be scaled. Figured dimensions are to be used at all times.  
 Any queries or variations arising from any of the above, must be reported to Design Time Studio for clarification prior to the commencement of any work.

**DRAWING NOTES**

**DRAWING NOTES**

**REVISIONS**

Rev	date	description
3	22.08.16	NEW BUILD

project title  
**WORKING DRAWING PACKAGE TASK**

drawing description  
**NEW BUILD**

drawing number **10.2** scale **1:100**

project number **10** date **2022.08.16**

designer **SARAH BRINK** revisor **3**

client approval

**TRADE NOTES**

Copyright over all design and drawings shall remain the intellectual property of Design Time Studio and any provision to the contrary in terms of the Copyright Act No. 62 of 1994 is hereby specifically excluded.

Reproduction of this drawing or design in whole or any portion thereof, other than in terms of the Client/Architect/Designer Agreement, is strictly prohibited.

Contractors and subcontractors to verify all levels, heights and dimensions on site, and to check same against the drawings before putting any work in hand.

Quality of all materials and workmanship to comply with the relevant SANS and BESA specifications.

The contractor is responsible for correct setting out on the specified works.

Contractors are to ensure that all details shown on this drawing are in complete compliance with local authority by-laws and regulations.

Contractors are to locate and identify existing services on site, and are to protect these from damage through the duration of work.

Contractors shall be responsible for ensuring the structural stability of all components of this work and ascertain that the main structure is capable of supporting all loads applied thereto.

Contractors are to ensure that their work, on site, is adequately protected at all times, during construction, and the responsibility for any damages incurred lies with the contractor and that they sign the site contractors and subcontractors are to ensure that all components, glazing panels and structural items through all floorings, ceilings and etc.

This drawing is not to be scaled. Figure dimensions are to be used at all times.

Any queries or variations arising from any of the above, must be reported to Design Time Studio for clarification, prior to the commencement of any work.

**DRAWING NOTES**

DRAWING NOTES

**REVISIONS**

Rev	date	description
3	22.08.16	DOOR & WINDOW SCHEDULE

Project title  
**WORKING DRAWING PACKAGE TASK**

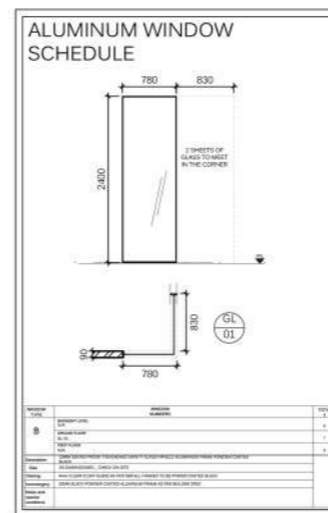
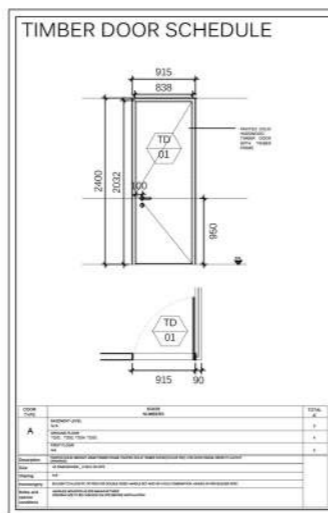
Drawing description  
**DOOR & WINDOW SCHEDULE**

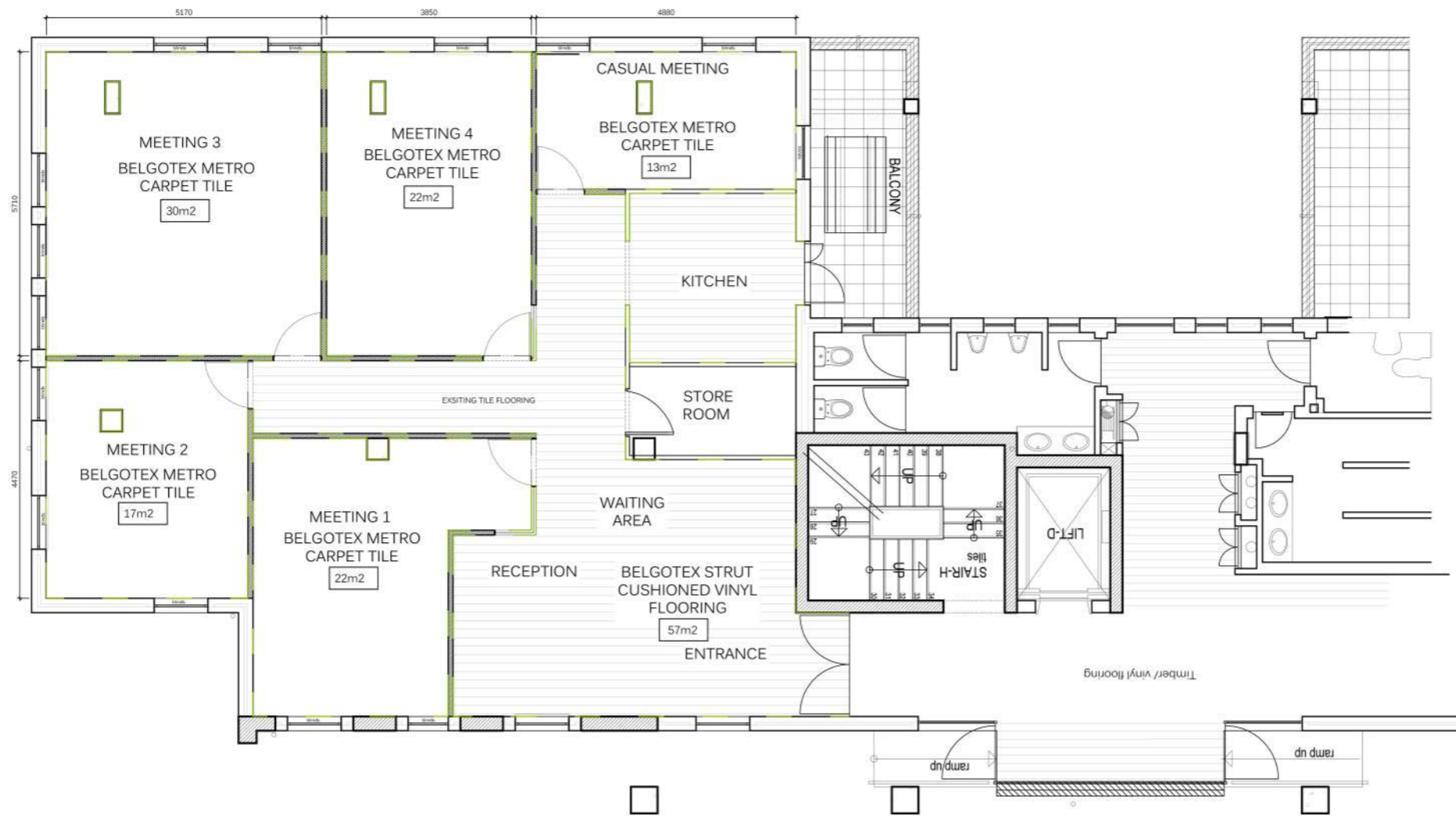
drawing number **10.3** scale **1:100**

project number **10** date **2022.08.16**

designer **SARAH BRINK** revision **3**

client approval





**FLOOR FINISHES LAYOUT  
NEW MEETING ROOMS**  
SCALE 1:100

BELGOTEX METRO CARPET TILE IN SKY GREY  
 104m<sup>2</sup>  
 NOTE: WASTAGE TO BE ADDED BY SUPPLIER

BELGOTEX STRUT CUSHIONED VINYL FLOORING  
 IN GAMBEL OAK  
 57m<sup>2</sup>  
 NOTE: WASTAGE TO BE ADDED BY SUPPLIER

MTRIM EDGE TRIM  
 ALUMINIUM STRAIGHT GRIP MATT  
 SILVER 31mm

144m OF NEW 150mm SKIRTING WITH  
 STRAIGHT EDGE PROFILE TO MATCH  
 THE EXISTING SKIRTING

**TRADE NOTES**

Copyright over all design and drawings shall remain the intellectual property of Design Time Studio and any permission to the contrary in terms of the Copyright Act of 2000 is hereby specifically excluded.

Reproduction of this drawing or design and/or any portion thereof, other than in terms of the Client/Designer Agreement, is strictly prohibited.

Contractors and subcontractors to work at levels, heights and dimensions on site, and to check same against the drawings, before putting any work in hand.

Quality of all materials and workmanship to comply with the relevant SABS and BSS specifications.

The contractor is responsible for correct setting out on the specified walls.

Contractors are to ensure that all details shown on this drawing are in complete compliance with local authority by laws and regulations.

Contractors are to locate and identify existing services on site, and are to protect them from damage through the duration of work.

Contractors shall be responsible for ensuring the structural stability of all components of their work and accept that the main structure is capable of supporting all loads against them.

Contractors are to ensure that their work on site is adequately protected at all times, against contractors and the responsibility for any damage incurred by the contractor and that they only get the site, contractors and subcontractors are to ensure that all components, glazing panels and structural items through all drawings, drawings and site.

This drawing is not to be scaled. Figured dimensions are to be used at all times.

Any queries or variations arising from any of the above, must be reported to Design Time Studio for clarification prior to the commencement of any work.

**DRAWING NOTES**

DRAWING NOTES

**REVISIONS**

Item	date	description
3	22.08.16	FLOOR FINISHES LAYOUT

project title  
**WORKING DRAWING  
PACKAGE TASK**

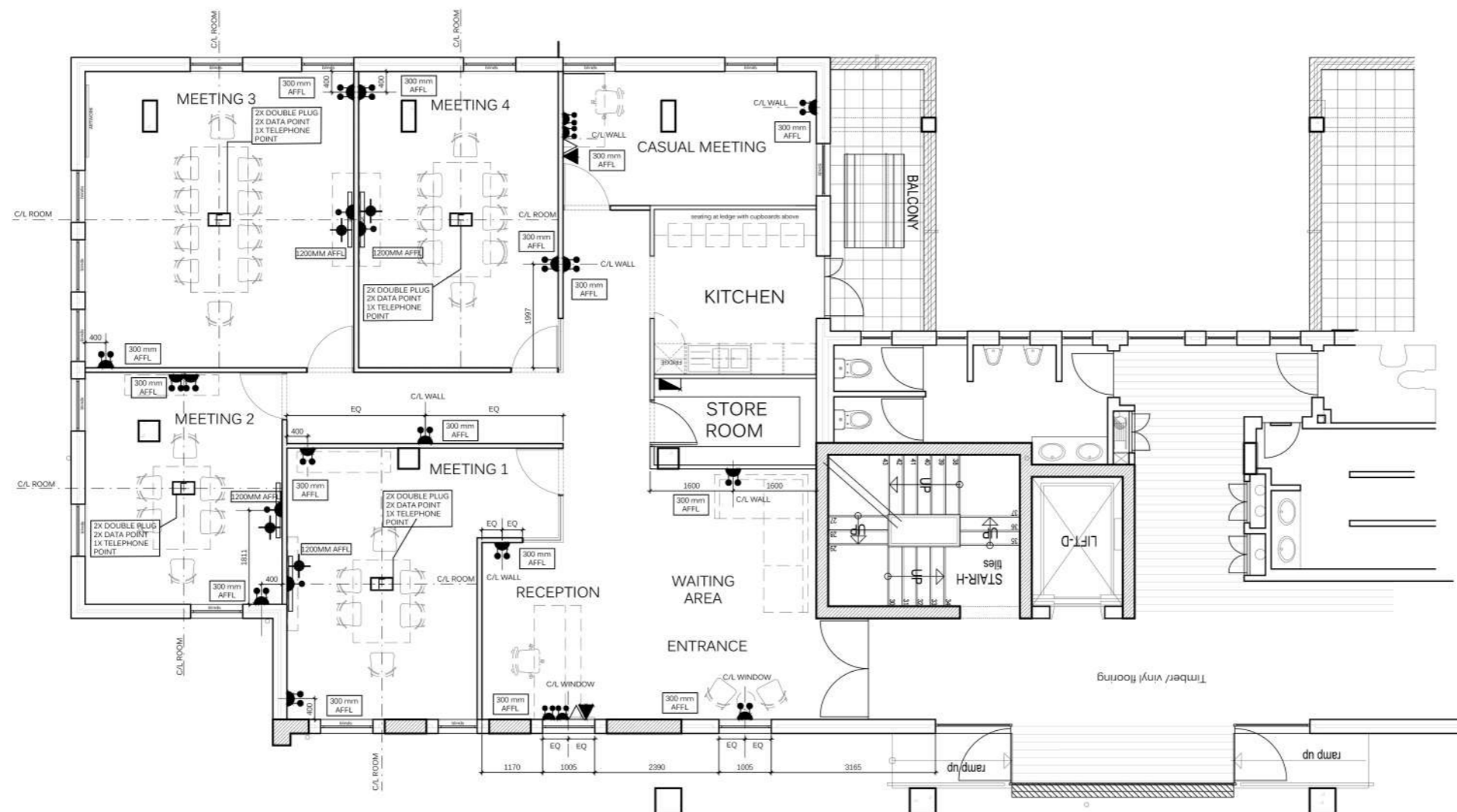
drawing description  
**FLOOR FINISHES  
LAYOUT**

drawing number 10.4 scale 1:100

project number 10 date 2022.08.16

designer SARAH BRINK revision 3

client approval



**DATA AND ELECTRICAL  
NEW OFFICE LAYOUT**  
SCALE 1:100

**ELECTRICAL OUTLET LEGEND:**

	Electrical Distribution Board
	16A socket outlet with USB A-type and C-type: Artior from Legrand
	Data Point
	Telephone Point
	Floor box
	16A Single Switched Socket
	TV antenna point

NOTE: ALLOW FOR TV ANTENNA POINT TO ALL 4 MEETING ROOMS  
NOTE: ALL PLUGS ON WALLS TO BE 300mm AFFL UNLESS OTHERWISE SPECIFIED

**TRADE NOTES**

Copyright over all design and drawings shall remain the intellectual property of Design Time Studio and any provision to the contrary in terms of the Copyright Act No. 63 of 1964 is hereby excluded.  
Reproduction of this drawing or design and/or any portion thereof, other than in terms of the Client/Designer/Contractor Agreement, is strictly prohibited.  
Contractors and subcontractors to verify all levels, heights and dimensions on site, and to check same against the drawings, before putting any work in hand.  
The contractor is responsible for correct setting out on the specified works.  
Contractors are to ensure that all details shown on this drawing are in complete compliance with local authority by-laws and regulations.  
Contractors are to locate and identify existing services on site, and are to protect these from damage through the duration of work.  
Contractors shall be responsible for ensuring the structural stability of all components of their work and ascertain that the main structure is capable of supporting all loads applied thereto.  
Contractors are to ensure that their work, on site, is adequately protected at all times, during construction, and the responsibility for any damage incurred lies with the contractor until final hand over to the site, contractor and subcontractors are to ensure that all components, plant, panels and equipment remain in through-outdoor, seawater and etc.  
This drawing is not to be scaled. Figure dimensions are to be used at all times.  
Any queries or variations arising from any of the above, must be reported to Design Time Studio for clarification prior to the commencement of any work.

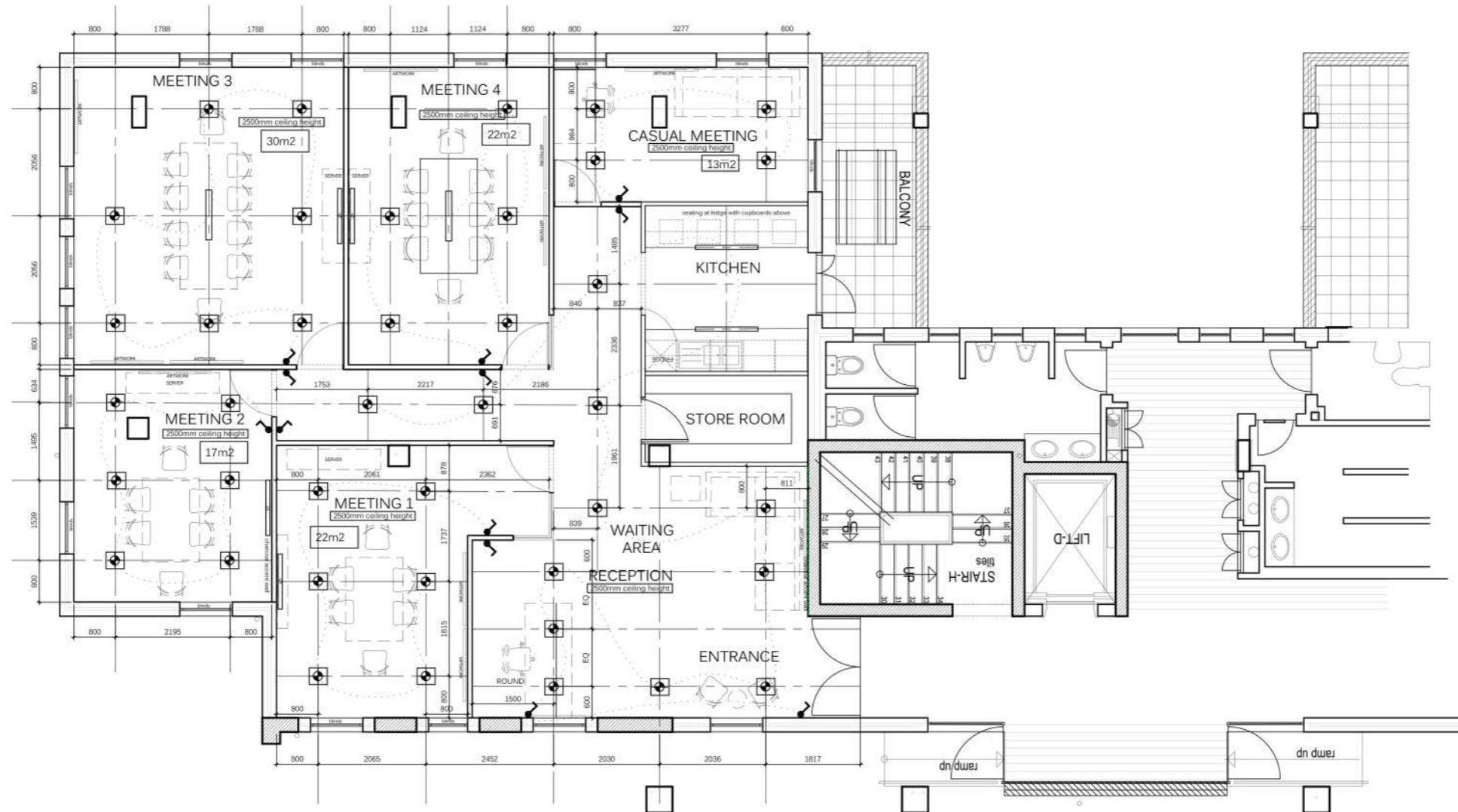
**DRAWING NOTES**

DRAWING NOTES

**REVISIONS**

REV	DATE	DESCRIPTION
3	22.08.16	DATA AND ELECTRICAL

Project title	
WORKING DRAWING PACKAGE TASK	
Drawing description	
DATA AND ELECTRICAL	
drawing number	scale
10.5	1:100
project number	date
10	2022.08.16
designer	revision
SARAH BRINK	3
Client approval	



**LIGHTING LAYOUT  
NEW OFFICE LAYOUT**  
SCALE 1:100

**LIGHTING LEGEND:**

	Adjustable down lights in box SPEC: down lighter with transformer and lamps in black box, recessed into ceiling NOTE: all down lighters to be on dimmer switches
	Compact Fluorescent's SPEC: single 1800mm compact fluorescent within black powder coated channel surface mounted onto concrete soffit. Social pipes and cable trays where required for wires
	Switch Spec: CLIPSAL white switches Switch height 1200mm
	Compact Fluorescent's SPEC: SINGLE DOWN LIGHT RECEIVED CHANNEL LIGHT WITH GLASS BLANK. ELECTRICIAN TO SUPPLY AVAILABLE OPTIONS FOR APPROVAL/DESIGNER LEB.

<b>TRADE NOTES</b>	
<p>Copyright over all design and drawings shall remain the intellectual property of Design Time Study and any provision to the contrary in terms of the Copyright Act No. 62 of 1964 is hereby specifically excluded.</p> <p>Reproduction of this drawing or design and/or any portion thereof, other than in terms of the Client/Architect/Designer Agreement, is strictly prohibited.</p> <p>Contractors and subcontractors to verify all levels, heights and dimensions on site, and to check same against the drawings, before putting any work in hand.</p> <p>Quality of all materials and workmanship to comply with the relevant SABS and BSS specifications.</p> <p>The contractor is responsible for correct setting out on the specified works.</p> <p>Contractors are to ensure that all details shown on this drawing are in complete compliance with local authority by-laws and regulations.</p> <p>Contractors are to locate and identify existing services on site, and are to protect these from damage through the duration of work.</p> <p>Contractors shall be responsible for ensuring the structural stability of all components of their work and ascertain that the main structure is capable of supporting all loads applied thereto.</p> <p>Contractors are to ensure that their work, on site, is adequately protected at all times, during construction, and the responsibility for any damages incurred with the contractor until final hand-over on the site. Contractors and subcontractors are to ensure that all components, glazing panels and sheetmetal items fit through all doorways, stairwells and lifts.</p> <p>This drawing is not to be scaled. Figure dimensions are to be used at all times.</p> <p>Any queries or variations arising from any of the above, must be reported to Design Time Study for clarification, prior to the commencement of any works.</p>	
<b>DRAWING NOTES</b>	
<p>3 22.08.16 LIGHTING LAYOUT</p>	
<b>REVISIONS</b>	
item	date description
3	22.08.16 LIGHTING LAYOUT
<p>project title <b>WORKING DRAWING PACKAGE TASK</b></p> <p>drawing description <b>LIGHTING LAYOUT</b></p>	
drawing number	scale
10.6	1:100
project number	date
10	2022.08.16
designer	revision
SARAH BRINK	3
client approval	





