

**imke
nina**



imkenina@gmail.com

+27 79 391 8535

@imkenina_design

imke nina

imkenina@gmail.com

+27 79 391 8535

@imkenina_design



—
algal

1-6

—
trill rd

7-12

—
atlantic studios

13-16

—
dock haus

17-20

—
pesce azzurro

21-22

—
mural

22-23

—
surface & product design

24-28

—
photography

29-32



algal

luxury urban experience

//'algəl/ - adjective, relating to or characteristic of algae

In a world where there appears to be such abundance, our very sources of life are being threatened on a daily basis by the pace and manner in which we consume everything our planet has to offer. With cases of severe drought and flooding equally increasing in recent years, access to clean, fresh water has become somewhat of a luxury. For me, ultimate luxury is privacy and a lot of space, seclusion, getting to switch off and unplug while still enjoying the benefits of well implemented technology. Luxury is a sense of being at peace, and - in the world of interiors - materiality and the journey it takes you on.

So why algae then? In a place like Cape Town we see water surrounding our city almost anywhere we go, yet it is saline and completely inadequate for drinking, while our natural freshwater sources are often severely polluted. On the other hand, these water sources are teeming with life and an abundance of one specific natural resource - algae. From macro-algae such as kelp - an excellent and very nutritious food source - to much tinier, almost microscopic forms of algae which can be used in the creation of bio-materials such as plastic and even fabric for clothing, but can also be grown indoors in order to offset carbon emissions due to the organism's ability to sequester carbon dioxide in the atmosphere.

My inspiration therefore came from the exciting prospect of materiality and technology and how these can be used to find practical solutions to many of our problems, as well as my love for the ocean and history. Both designs are heavily influenced by materiality as well as the history of each area and their connections to the sea. A dark and moody hotel interior to depict the storminess of the ocean and the chaos of a city, and tranquil, spacious, and neutral interiors for the pods, creating the sense of ultimate luxury - privacy, freedom, and space.

I hope you enjoy the journey...



perspective of the urchin from reception



materials



the urchin - dining experience + kitchen



peak - bar



Acoustic panels made from textile waste clad the ceilings of the entire common area.



Curved and rippled stainless steel clads the bulkheads and pillars.



Handmade "Bubble" tile by local manufacturer Veelvlak to clad the walls inside the common areas.



Bioplastic curtain made from seaweed and food waste.



Cast limestone in Westcoast Olive by local manufacturer Wolkberg Casting Studios in Johannesburg.



Plastic tiles created with plastic waste found in the surrounding areas and greater Cape Town area.

Bedroom walls finished in Fern Green skimmed CemCote.



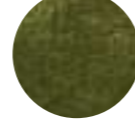
The timber cladding in both locations, is constructed out of Alien Invasive Plants from the cape.



Local hemp fabrics from Hemporium and The Fabric House for bedding and curtaining.



Mossy green, plush, custom carpet from Belgotex.



bedroom + bathroom



bathroom



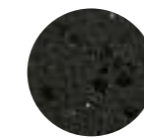
Custom, precast limesite doors by Wolkberg in Coral.



Pixel tile in Platinum, taken from Wolkberg's Evolve range of tiles made from 81% recycled tiles.



One-way mirror hides WC and basin from sight.



Terrazzo in Midnight but Notation Design in Durban.



algal

luxury pod experience

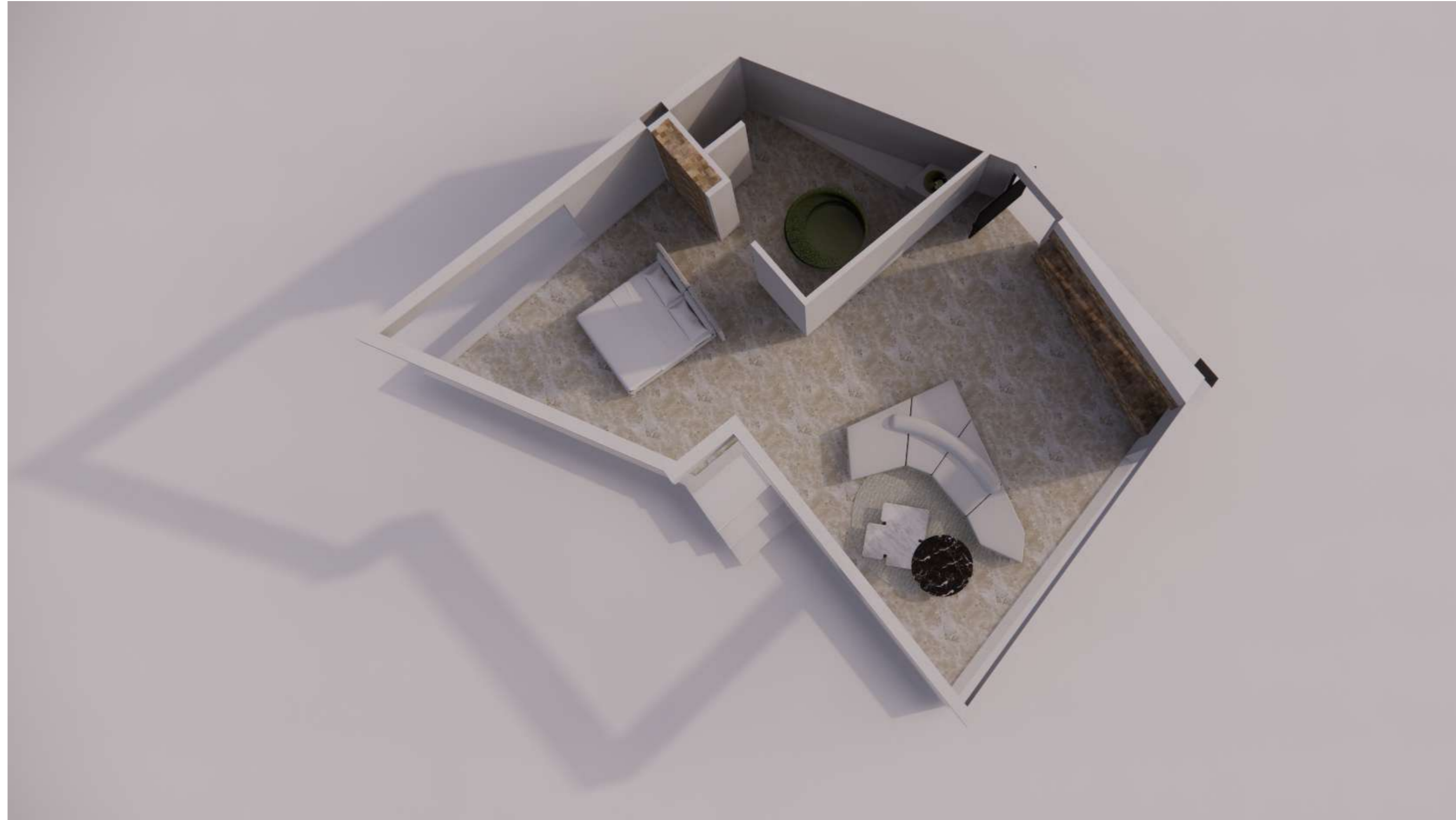
With its rugged terrain and wildness, the Venus Pool in Cape Point makes for a dramatic, unusual and magical location which brings peace and calm even in the shadows of the mountain and even in its almost hostile conditions of hard, high mountain peaks and rocky, dark ocean depths.

I wanted to challenge finding tranquility in such an environment, and with the seaward facing, high volume, open plan pods, the illusion of space is created.

As an experience, guests can book to forage for their own seaweed, mussels, algae, and other food sources by a private forager and chef, who will then also teach you to prepare the food yourself in the pod's kitchen.

Each pod also has access to its own private tidal pool, created by careful construction to embrace and enhance rather than destroy the existing tidal pools.

Here you will wake up to the most spectacular sunrise, with the birds singing and the waves crashing against the rock formations just outside your bedroom window, feeling rested and grounded..



layout concept for venus pods

trill road

Client Requirements

- A 'seamless' living / dining / kitchen area. Your client has got a quirky, fun side to them.
- Main bedroom, BIC, with spacious en-suite bathroom.
- A second bedroom that doubles up as a study, where your client can do the odd bit of work.
- A second bathroom with a shower, basin and WC for guests.
- A considered, and well-designed outdoor space.

Limitations

You have the freedom to design the internal layout of your space, bearing in mind, the location of all existing exterior openings, with the exception of the back stoep as indicated on the floor plan. Please note this is a heritage building, and therefore the façade may not be altered. Openings must remain intact, and as is, with the exception of the back stoep.

Due to the nature of this building, most of the interior walls are load bearing. In order to puncture through these walls to create an opening, one will have to make use of a structural engineer, as foundations will need to be altered. You will also require structural support beams down to the foundation, and to support the load above. Your client would like you to be budget conscious in this regard, and make minimal changes to the building, as your alteration will require council approval, and will therefore delay the building process.



materials



mirror clad courtyard wall framing the lounge + patio



lounge interior



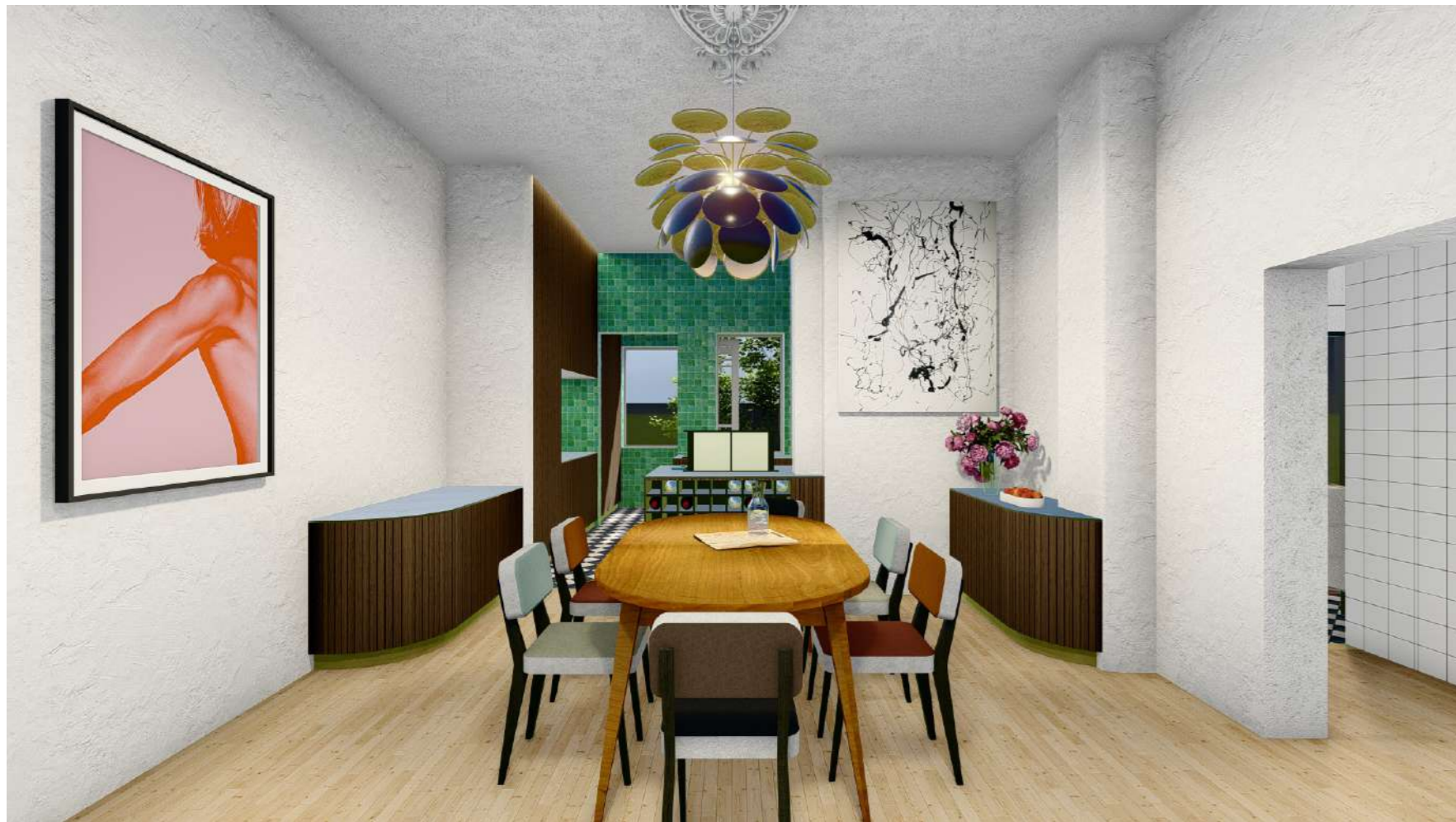
pause between lounge + kitchen



dining room from kitchen



dining room with original fireplace



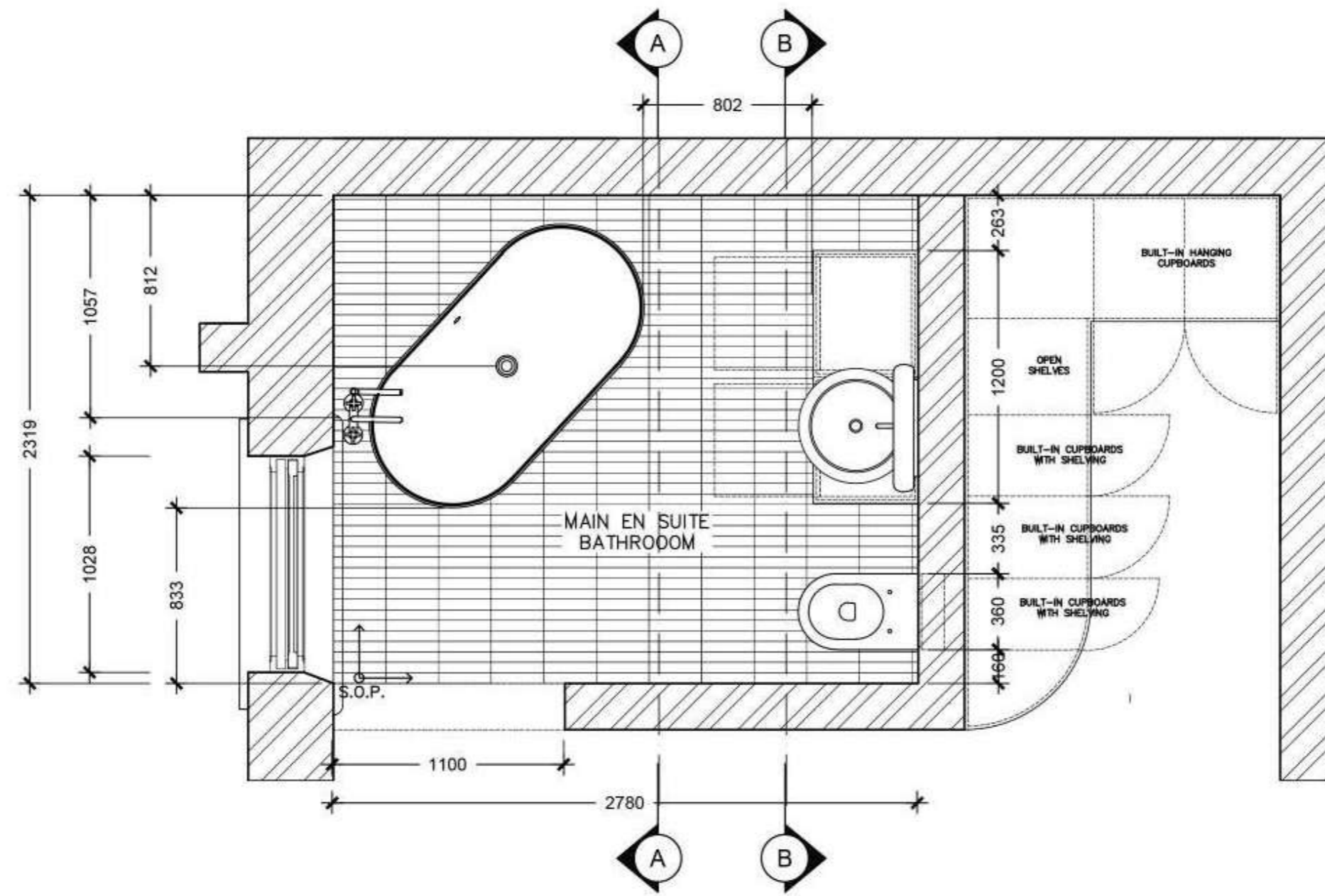
kitchen from dining room



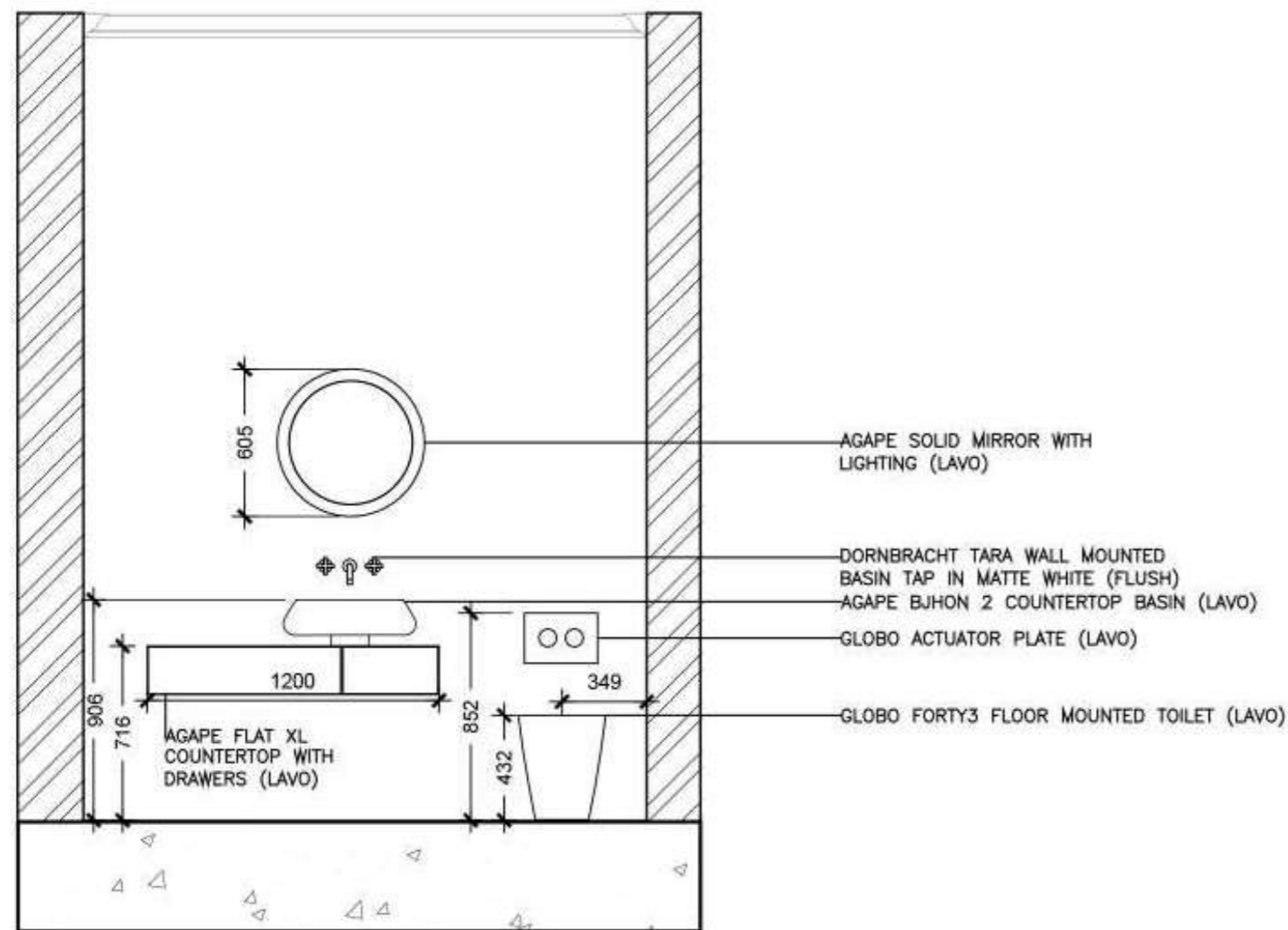
guest bedroom



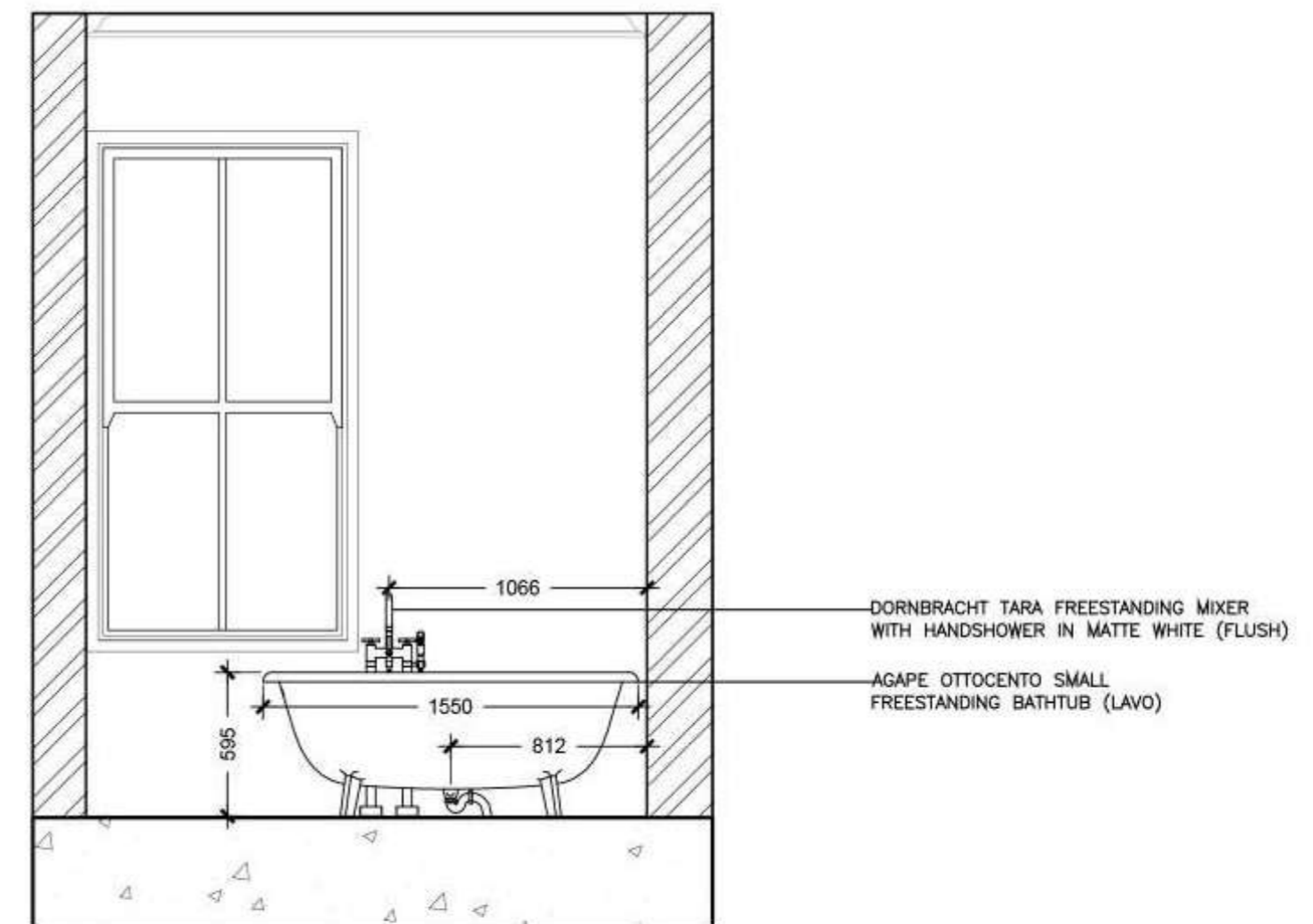
guest bathroom



main bathroom en-suite
floor plan /nts



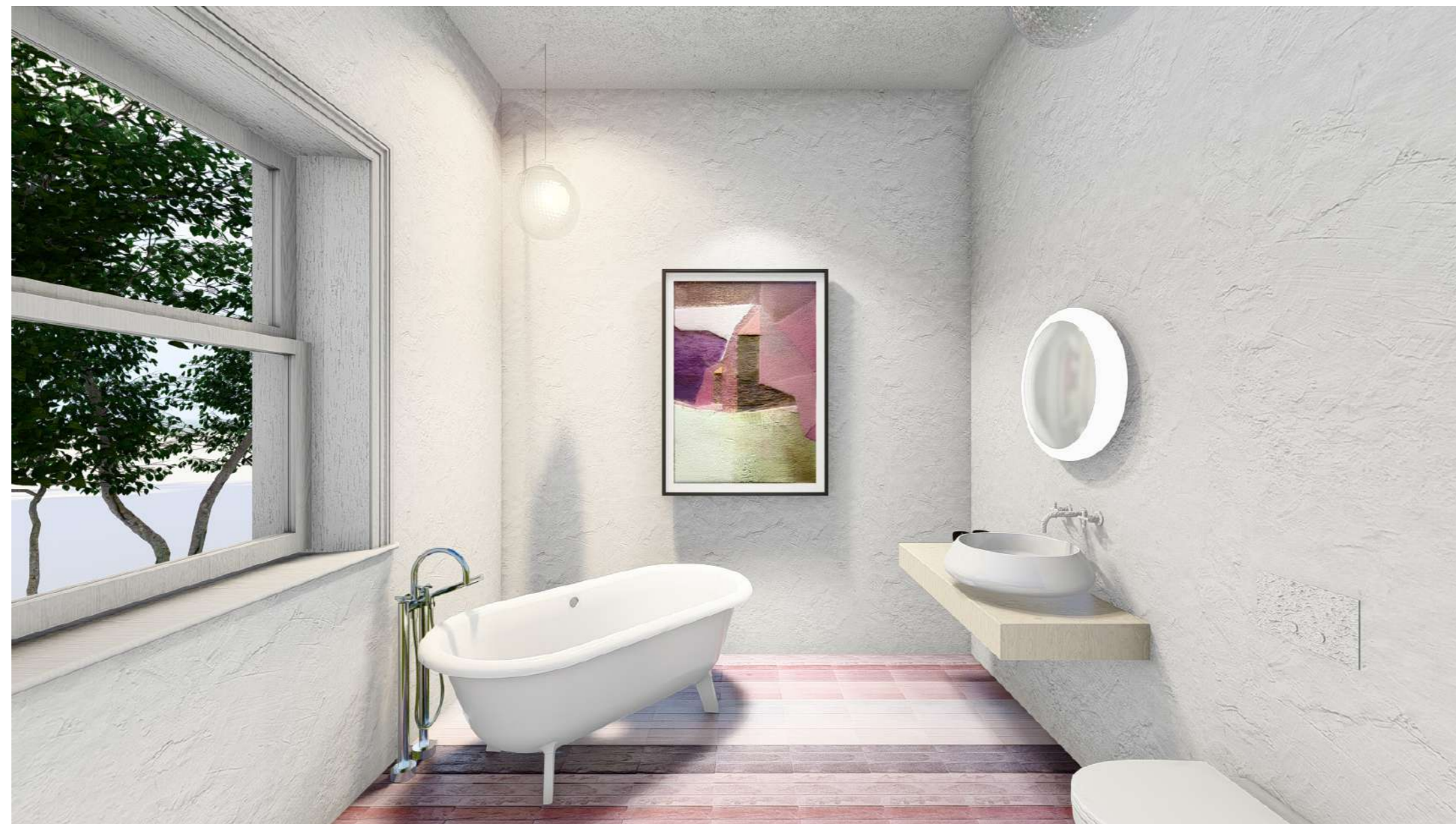
main bathroom en-suite
elevation bb /nts



main bathroom en-suite
elevation aa /nts



main bedroom



main bathroom en-suite

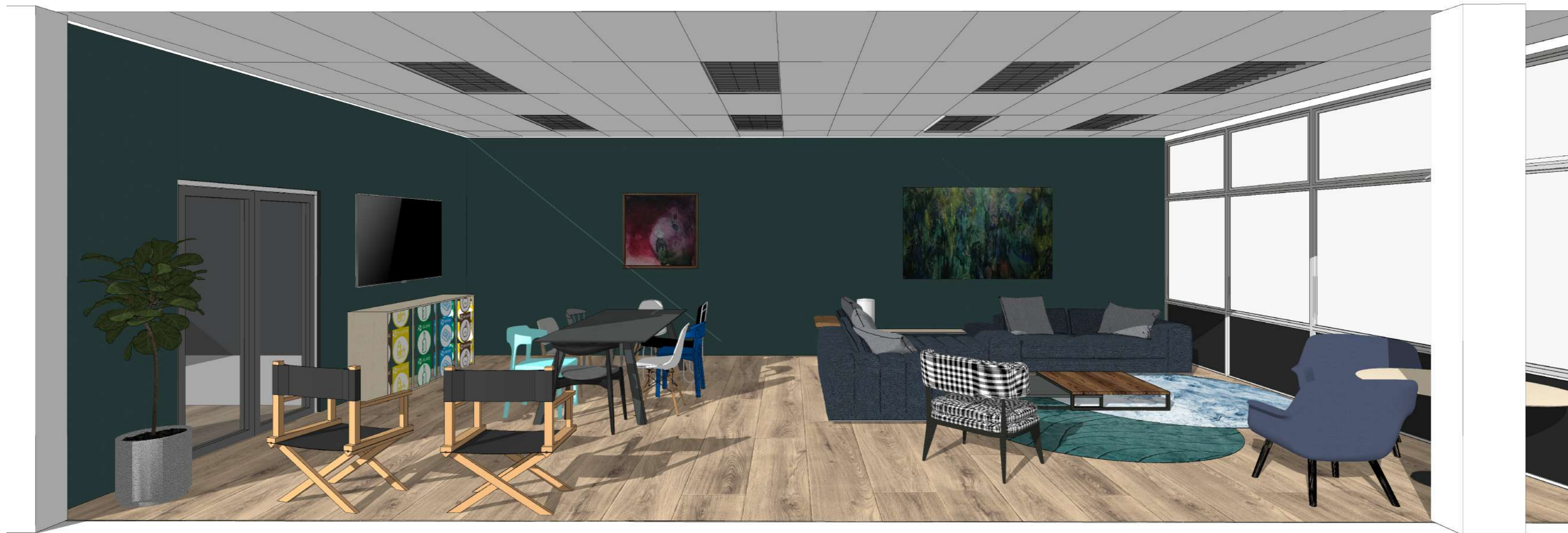
atlantic studio

The Client

Atlantic Studios is the largest dedicated film and TV studio facility in the West of South Africa. We offer eight stages of flexible space, including a giant green screen studio, large back lot and extensive parking – just 30 minutes from Cape Town International airport. Equipped with workshops, production offices, costume and dressing-rooms, plus a thriving hub of creative on-site tenants, we've got your production needs covered. The Atlantic Studios team will assist you in making your shoot run smooth and without any snags..

The Brief

The Atlantic Studios management team needs your help. Atlantic Studios is known as a cutting-edge film and television studio facility in the industry. Unfortunately when it comes to their canteen on the 2nd floor of the main building together with their cast and crew lounge their facilities fail to impress. Atlantic Studios has approached YOU to re-design their current canteen together with their crew and cast lounge in order to breathe new life into these neglected spaces. The upgrade of these areas together with an upgrade of the existing coffee shop on the ground floor will ensure that their cutting-edge status remains intact for years to come.



cast greenroom



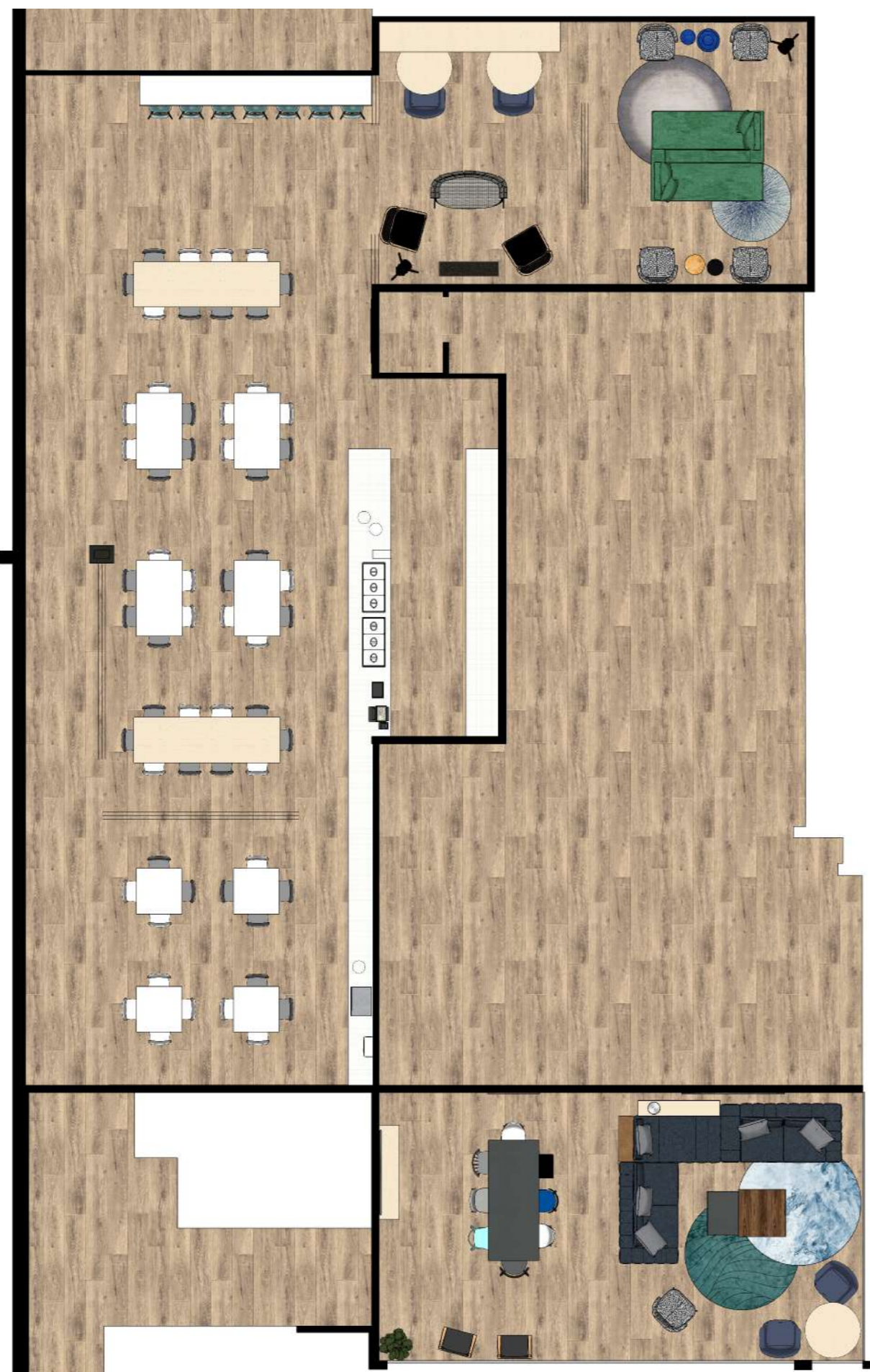
general lounge + meeting area



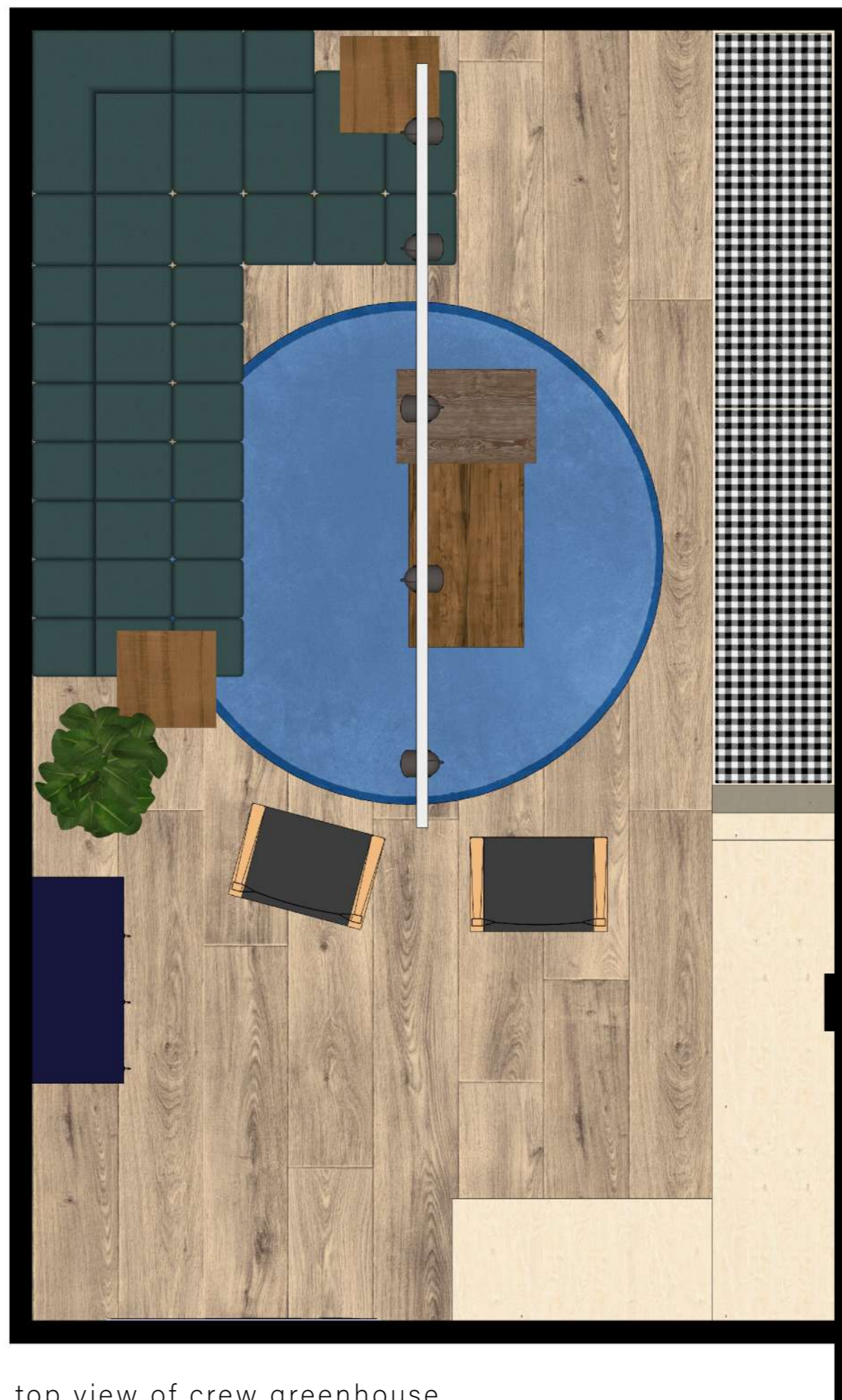
crew greenroom



crew greenroom section



top view of general first floor layout



top view of crew greenhouse

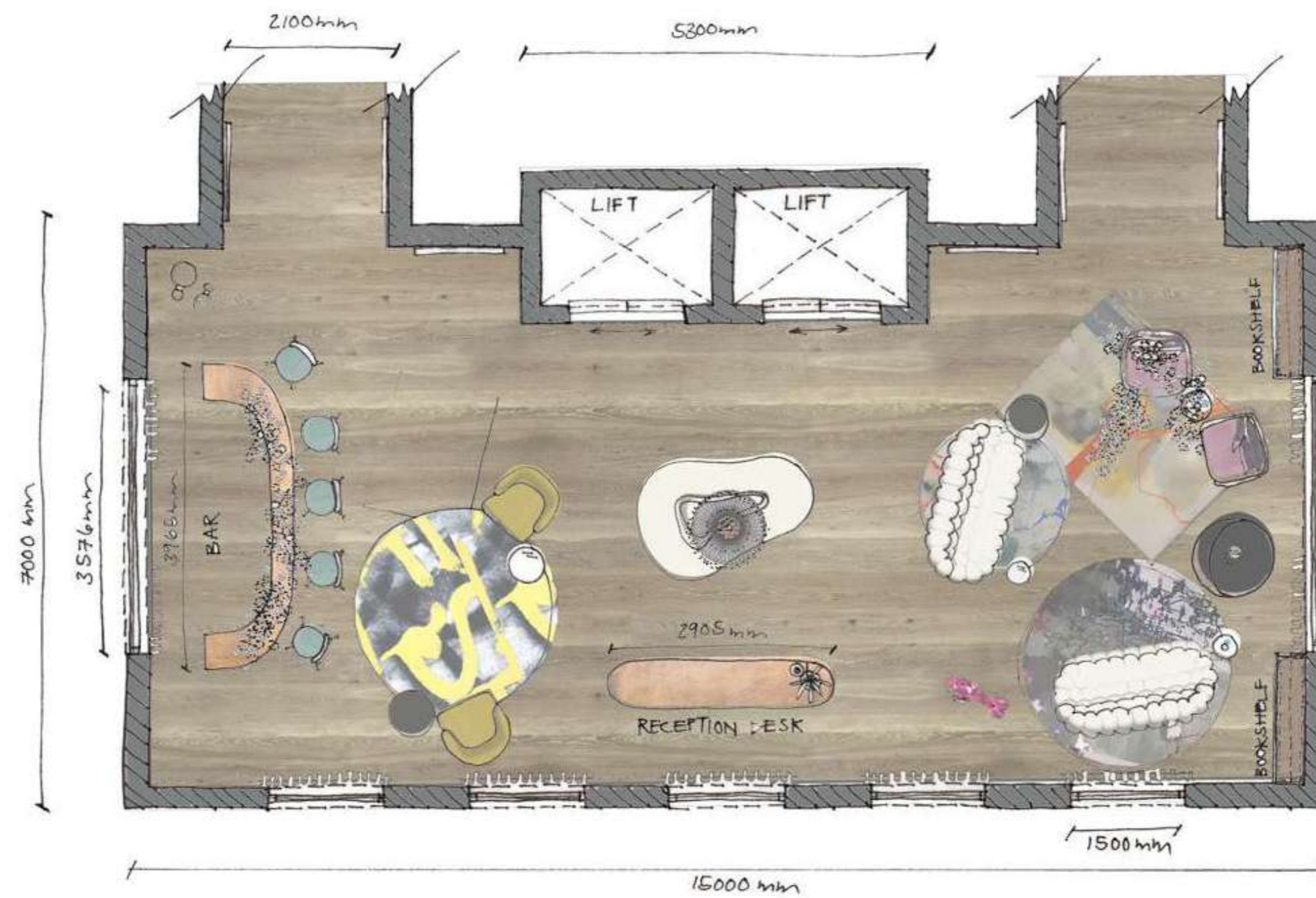


dock haus

Client | 'DOCK HAUS'

The Dock Haus, a new boutique Hotel, has commissioned YOU to conceptualize and design the lift, lounge lobby / reception area of their new Hotel in the V&A Waterfront. This bespoke Hotel will showcase and celebrate only the very best of iconic international design. Thomaz Rossi, art collector and hotelier has appointed you to bring home the idea of an eclectic, exclusive, daring, playful and exquisite arrival space where like-minded, fabulously interesting guests come to stay and revel in all things beautiful... the finer things in life.

Dock Haus aims to assemble communities of members that have something in common: namely, highly creative souls. This new hotel development will form part of the R3.9 billion expansion for Cape Town's V&A Waterfront. The 10.5 hectare canal district includes expansion projects on either side of Dock Road and surrounding the existing Battery Park Development.



floor plan / nts



slow lounge



bar + solo seating



materials



view across from bar past reception + lifts



pesce azzurro

restuarant:

pesce azzurro (now called Balena Blue)

location:

corner bree + watwrkantstreets, cape town

brief:

Currently situated in Woodstock, pesce azzurro strives to offer the ultimate contemporary Italian seafood cuisine. In August 2021, this client will be moving their premises to Bree Street and has appointed YOU to conceptualise and design the interior of this new and exciting space. design is to include inside and outside restuarant dining, bar, deli, cellar and lounge areas.

Prize winner - first runner up



view from de waterkant street into restuarant



wine cellar + private dining area above



deli + seating with piano lounge above



mural

The Client:

Cape Looms by Justin Van Breda X Design Time

Cape Looms is a new weaving facility in Cape Town, weaving Mohair and Wool carpets by hand, creating a community of weavers and skilled artisans. Our specially commissioned looms are the largest in Africa.

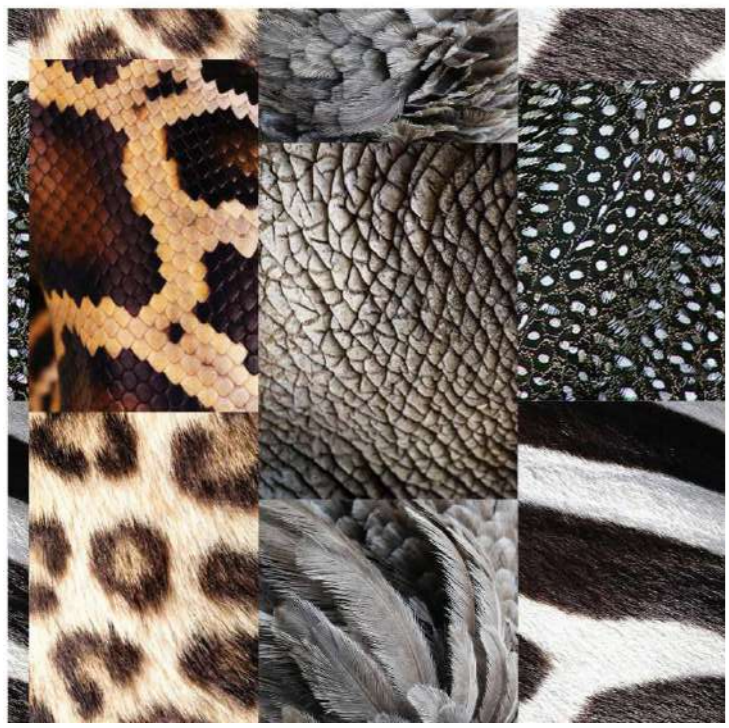
Founder Justin Van Breda, comes from a wool farming family, having created the Merino Wool industry on their farm Zoetendals Vallei in the early 1800's. Eighty percent of the world's mohair comes from South Africa and of that most is exported before it is processed. Our aim is to produce at source and sell internationally



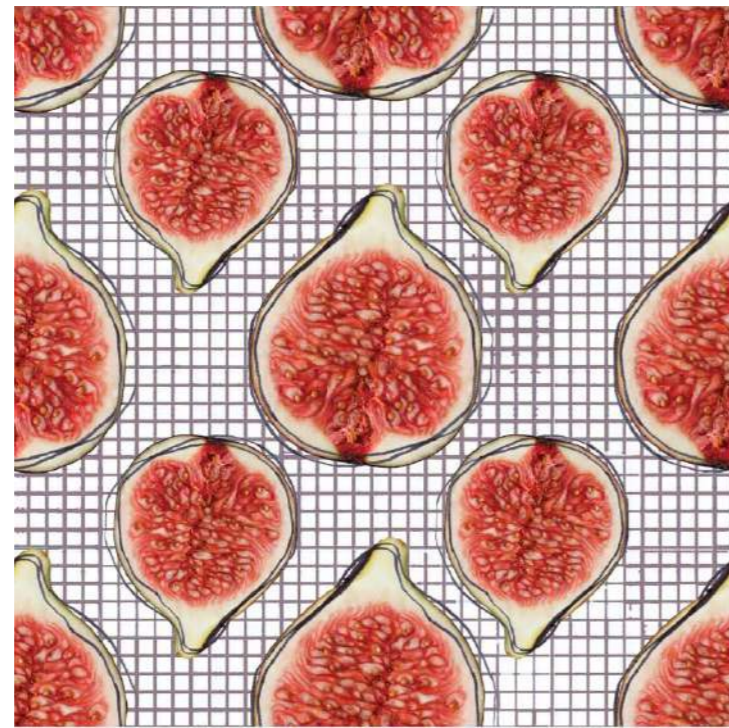
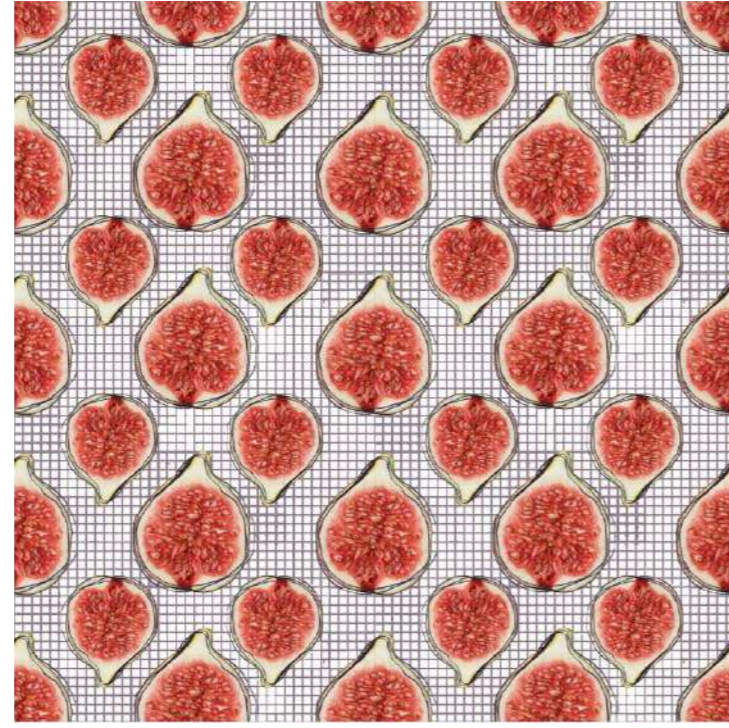
surface & product design

Definition of surface design:

Surface design is any type of artwork (pattern, illustration, hand lettering, stencilling, etc.) made by a designer /artist that is intended to be applied to a surface to enhance its visual appearance and/or functionality.



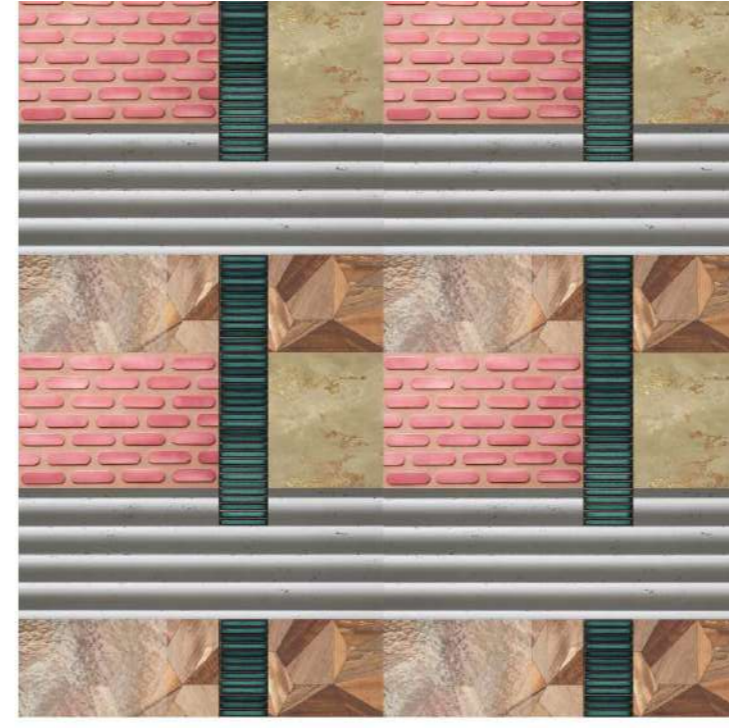
pattern blocking



tutti frutti



give it wings



materials mash



delft

THE PIPE DREAM LIGHT IS INSPIRED BY THE GENIO CHANDELIER, DESIGNED BY MARCANTE-TESTA FOR SEM MILANO, AND BY THE FLUIDITY AND CHALLENGES OF DAILY LIFE, CELEBRATING THE FACT THAT BEAUTY CAN OFTEN BE FOUND IN THE MOST UNEXPECTED PLACES AND FORMS, AND TO CONTINUE FLOWING AND GROWING AND MOVING EVER FORWARD.



MATERIALS + FITTINGS + COMPONENTS

CABLE: SOLID FABRIC CABLE IN "COPPER" (HOI P'LOY) / FRAME: BENT COPPER TUBING, COPPER TS + COPPER STOP ENDS (AVAILABLE FROM MOST PLUMBING SUPPLIERS) / LAMP HOLDERS: E27 METAL LAMP HOLDER KIT WITH DOUBLE RING NUT IN "ULTRAVIOLET" (CREATIVE CABLES) / LAMPS: OSRAM VINTAGE 1906 LAMP, 4W 2200K LED E27 G125, CLEAR FILAMENT, WARM (NEWPORT LIGHTING) / SUSPENSION SYSTEM: COPPER WIRE THREAD THROUGH BONDING STRAPS, SUSPENDED FROM CEILING FITTING OF SHUTTERPLY



GENIO CHANDELIER BY MARCANTE-TESTA FOR SEM



COPPER TUBING FOR PLUMBING



HOI P'LOY FABRIC CABLE IN COPPER + COPPER FITTINGS



CREATIVE CABLES E27 LAMP HOLDER IN ULTRAVIOLET



CREATIVE CABLES E27 LAMP HOLDER IN ULTRAVIOLET



OSRAM VINTAGE 1906 LAMP IN AMBER WITH WARM FILAMENT



pipe dream

the dune stool



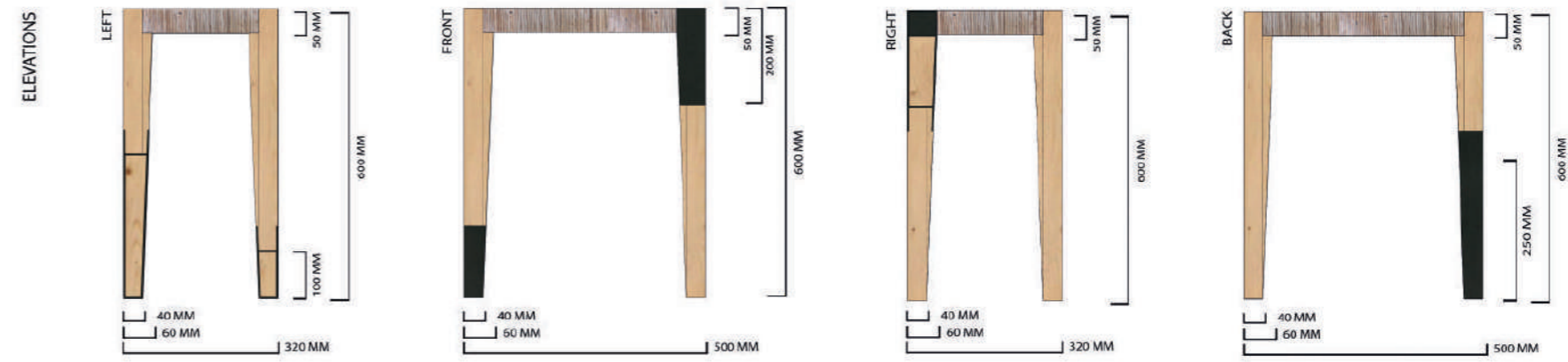
THE DUNE STOOL

BRIEF | UPCYCLE AN EXISTING, OLD WOODEN STOOL BY CONVERTING IT INTO A MORE VALUABLE, MORE DESIGNED AND CONSIDERED PIECE OF FURNITURE WHICH IS FRESH, EXCITING, UNIQUE, AND GLOBALLY TRENDWORTHY, AND BY STILL MAKING USE OF AT LEAST 60% OF THE ORIGINAL MATERIALS.

MY DESIGN REPLACES THE ORIGINAL SEAT OF PINE WITH A SEAT MADE OUT OF SHUTTERPLY, LAMINATED, CUT, AND THEN ARRANGED IN A CHEVRON PATTERN; THE FINE CHEVRON PATTERN CREATES THE IMPRESSION THAT THE SEAT COULD ALSO HAVE BEEN MADE OF A WOVEN MATERIAL SUCH AS LEATHER "RIEMPIES", WOVEN UPHOLSTERY FABRIC, OR EVEN RATTAN, GIVING IT A RICH TEXTURE WITH MOVEMENT.

THE LEGS ARE MADE OUT OF A COMBINATION OF METAL AND THE ORIGINAL PINE LEGS AND STRUTS - THE TIMBER BEING GLUED TOGETHER TO FORM FOUR LEGS, CUT DOWN AND TAPERED, THE VARNISH SANDED DOWN AND FINISHED WITH A WOOD OIL TO CELEBRATE THE NATURAL TONES OF THE PINE. THE METAL INSERTS ARE MADE OF BENT MILD STEEL BAR, PAINTED BLACK. THE LEGS ARE ATTACHED TO THE SEAT BY USE OF COUNTERSUNK WOOD SCREWS.

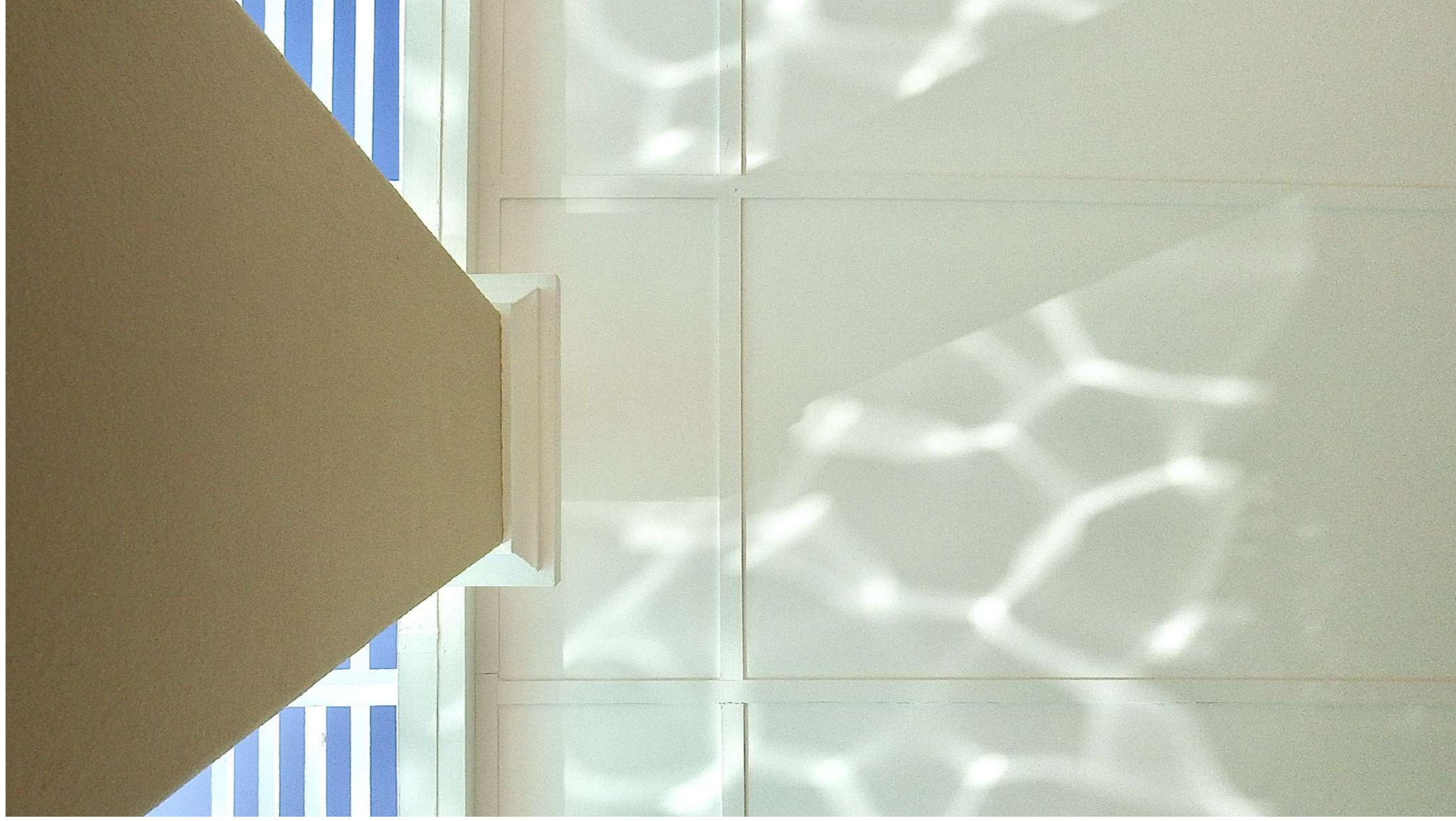
ORIGINAL DESIGN | IMKE NINA GEHRING
 MANUFACTURERS | CARPENTRY - GERALD AT SMITH & CLARK, WESSEL & FIKELELA AT PSFX
 METALWORK - MICHAEL AT MO STEEL
 MANUFACTURING | TWO WEEKS FROM START TO COMPLETION

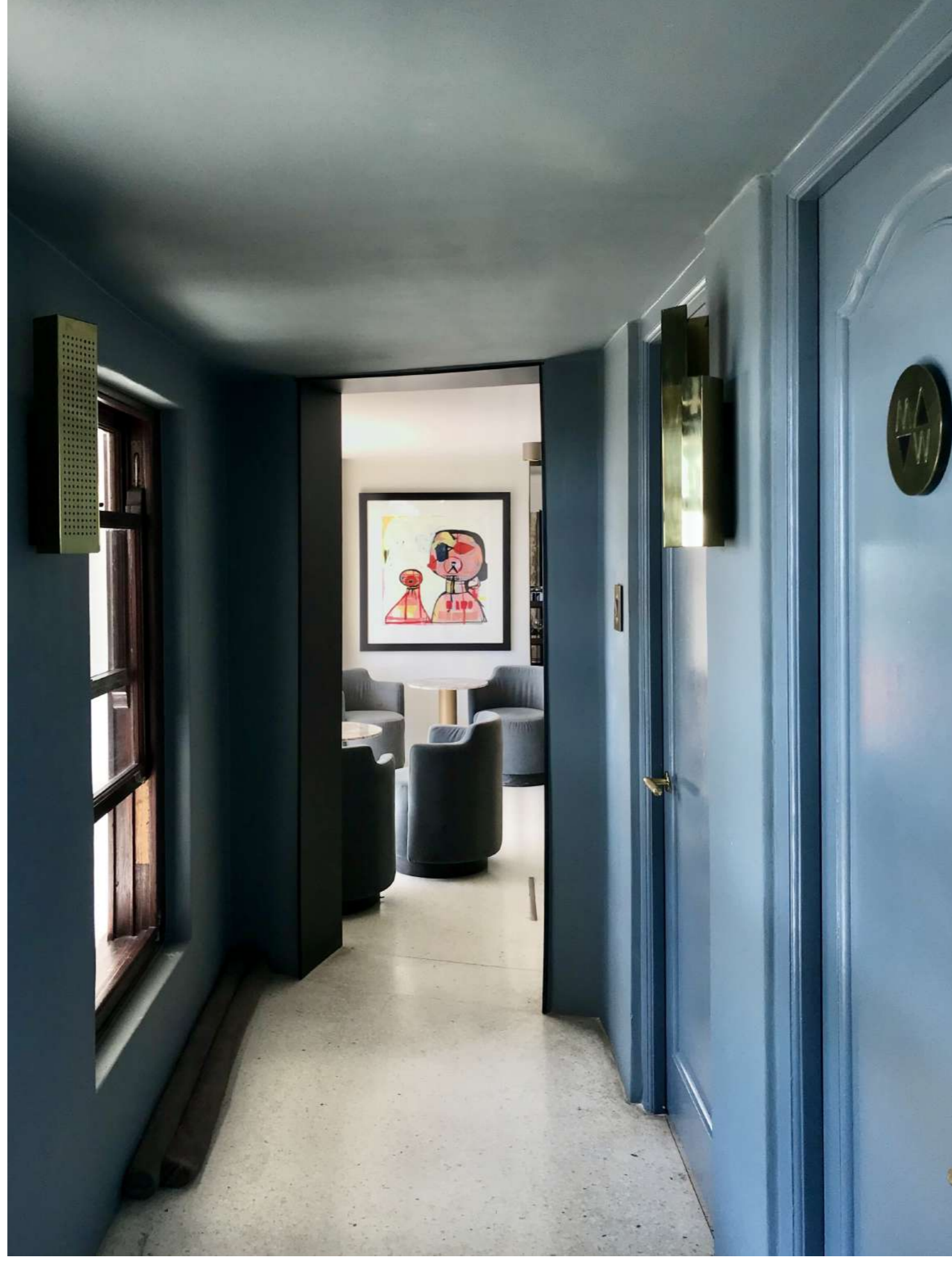
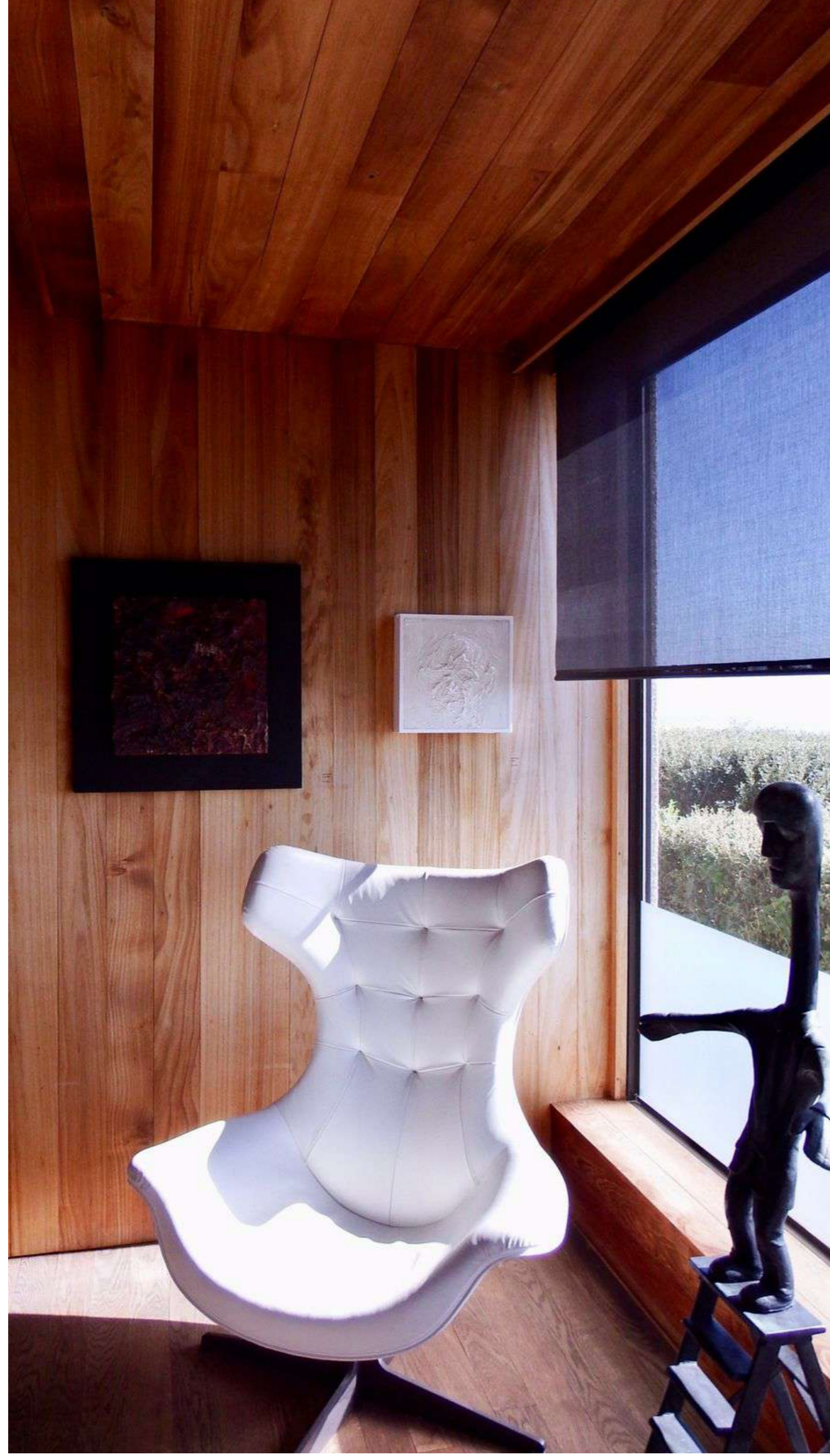


photography









**imke
nina**

imkenina@gmail.com

+27 79 391 8535

thank you