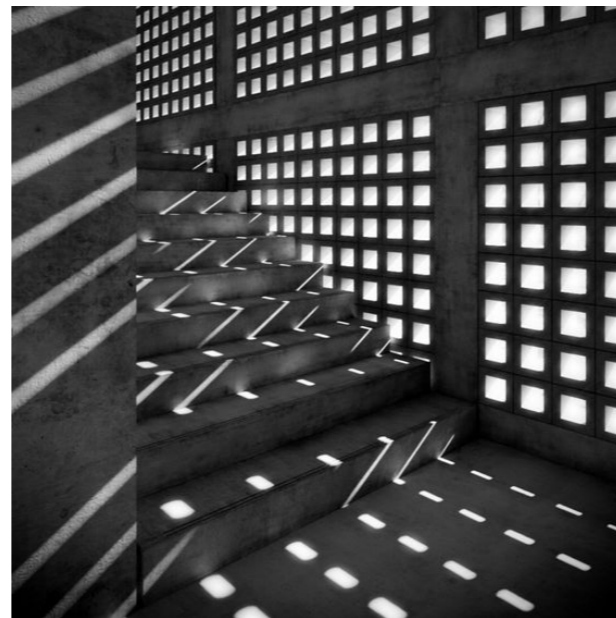


MARLET VAN ZIJL



welcome.



HELLO

Ever since I can remember I've been fascinated with design. Whether it be conceptualising new ideas, obsessing over textiles, or meticulously picking the right finishes - I love the entire design process.

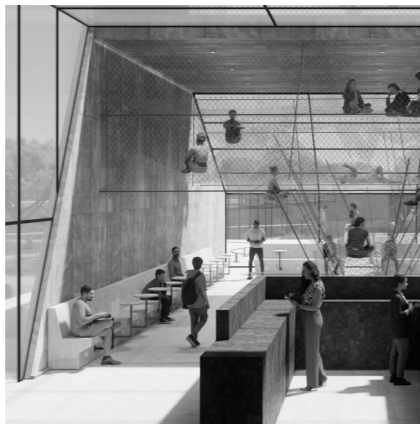
My design journey started as a clothing developer, but a trip to beautiful and historic Japan with its distinct architecture and Asian grandeur would ultimately lead me to the wonderful and wide-ranging realm of interior design. This founding inspiration is still ever present, and in this portfolio, you'll find a strong influence of Eastern design styles and elements.

This portfolio is a dedication to the wonderful Design Time School of Interior design that I was able to attend in 2022 and 2023. None of these projects would've been possible without the phenomenal teachers and co-conspirators (students) that have helped me to evolve and expand my understanding of design and allowed me to express myself creatively in ways that I never thought possible.

Love, Marlet van Zijl

CONTENTS

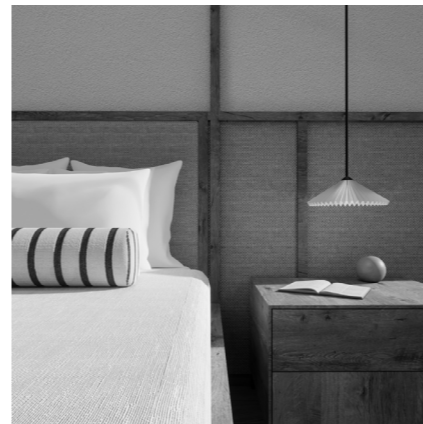
01 Caesarstone



02 PG Bison



03 Fernwood



04 Metaverse



05 Stay Unique



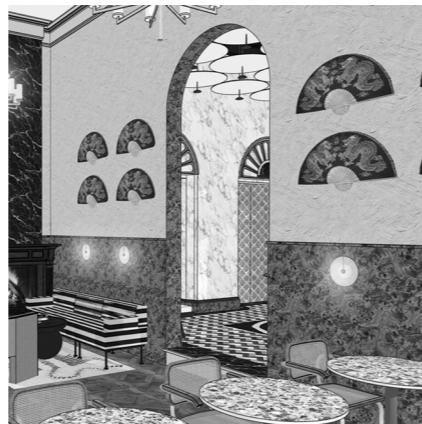
06 On Q



07 Openroom



08 Hartley House



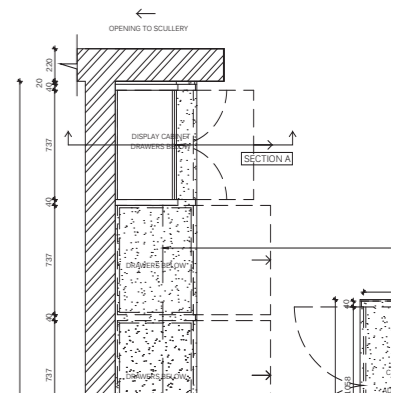
09 Product Design



10 Renders



11 Technical Drawings





National 2nd Place

01 CAESARSTONE

BRIEF: Designers are cordially invited by Cape Town 2040 and Our Future Cities to embark on a visionary journey in crafting a conceptual space for the Nantes Park Sports Centre. This unique opportunity calls for the creation of a multifunctional design that not only captures the essence of a sports facility but also serves as a clubhouse for the broader urban sports community within the park.

CONCEPT: The primary goal is to forge a space that is both inclusive and relatable, an architectural testament that serves and uplifts the vibrant community of Athlone. A venue where inclusivity thrives, and to achieve this, visitors are encouraged to leave their personal marks on the walls through the expressive medium of graffiti. This collaborative act becomes a celebration of individuality within the collective spirit of the community.

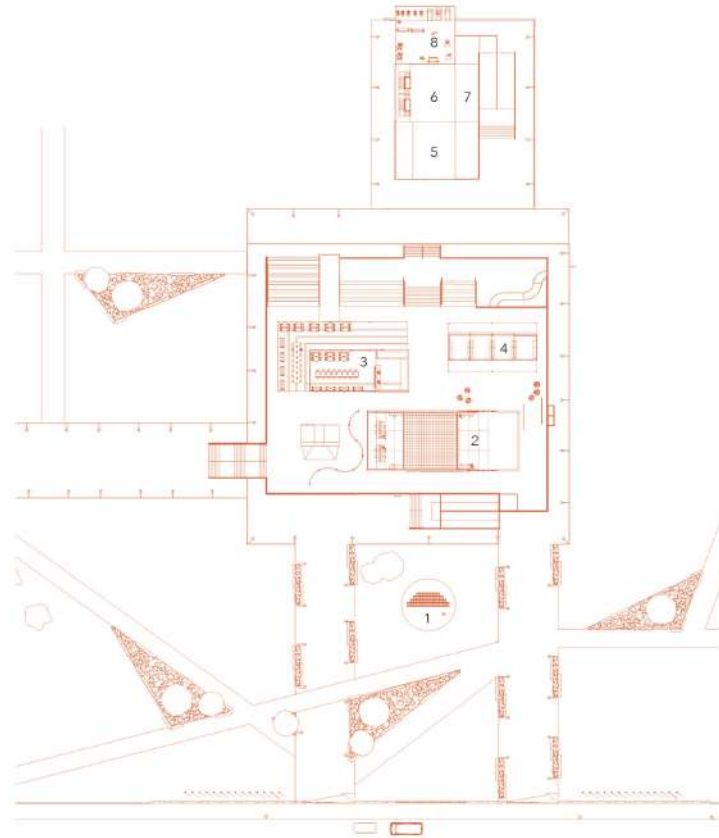
Given the dynamic nature of this urban sports park, my concept encourages the active practice of urban sports throughout the building. The facility is designed not only as a backdrop but as an integral part of the urban sports experience, seamlessly blending form and function.

[+] ATHLONE OLYMPIC URBAN SPORTS CENTRE

- [+] H LONE
- [+] COMMUNITY
- [+] SUSTAINABILITY
- [+] CAPE MALAY FOOD
- [+] URBAN SPORT CULTURE
- [+] TAGGII GRAFF

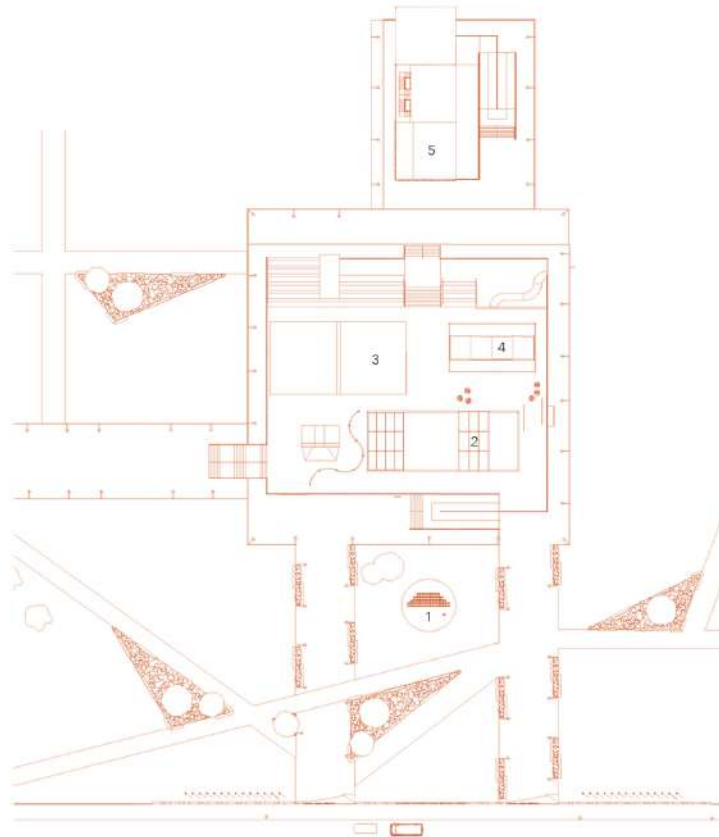
= THE COMMUNITY





Level 1 - Layout Plan
NTS

Key: 1. Trojan Horse Memorial 2. Reception 3. Restaurant 4. Retail
5. Community Hall 6. Ablution 7. Storage 8. Gym



Level 2 - Layout Plan
NTS

Key: 1. Trojan Horse Memorial 2. Reception 3. Restaurant 4. Retail 5. Office Space

5810 BLACK TEMPAL

4044 AIRY CONCRETE



Video Tour

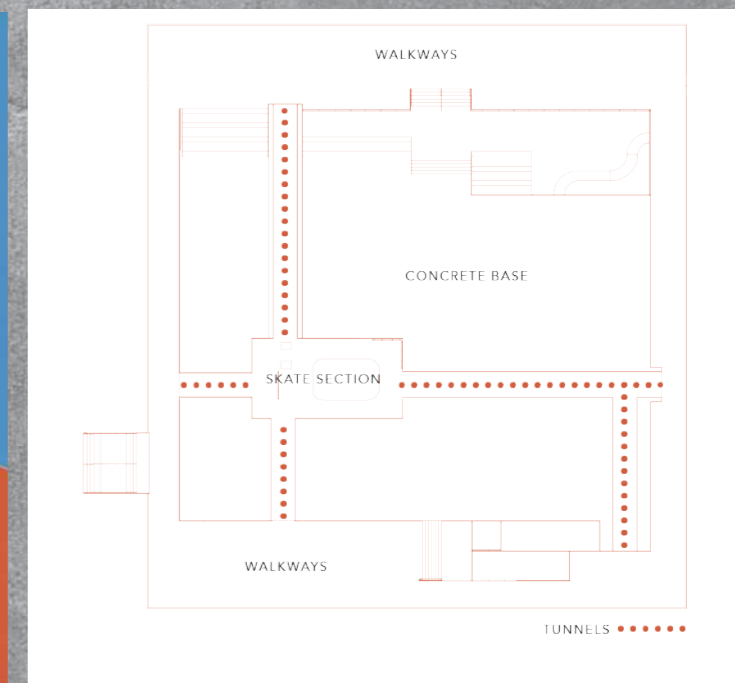
Reception



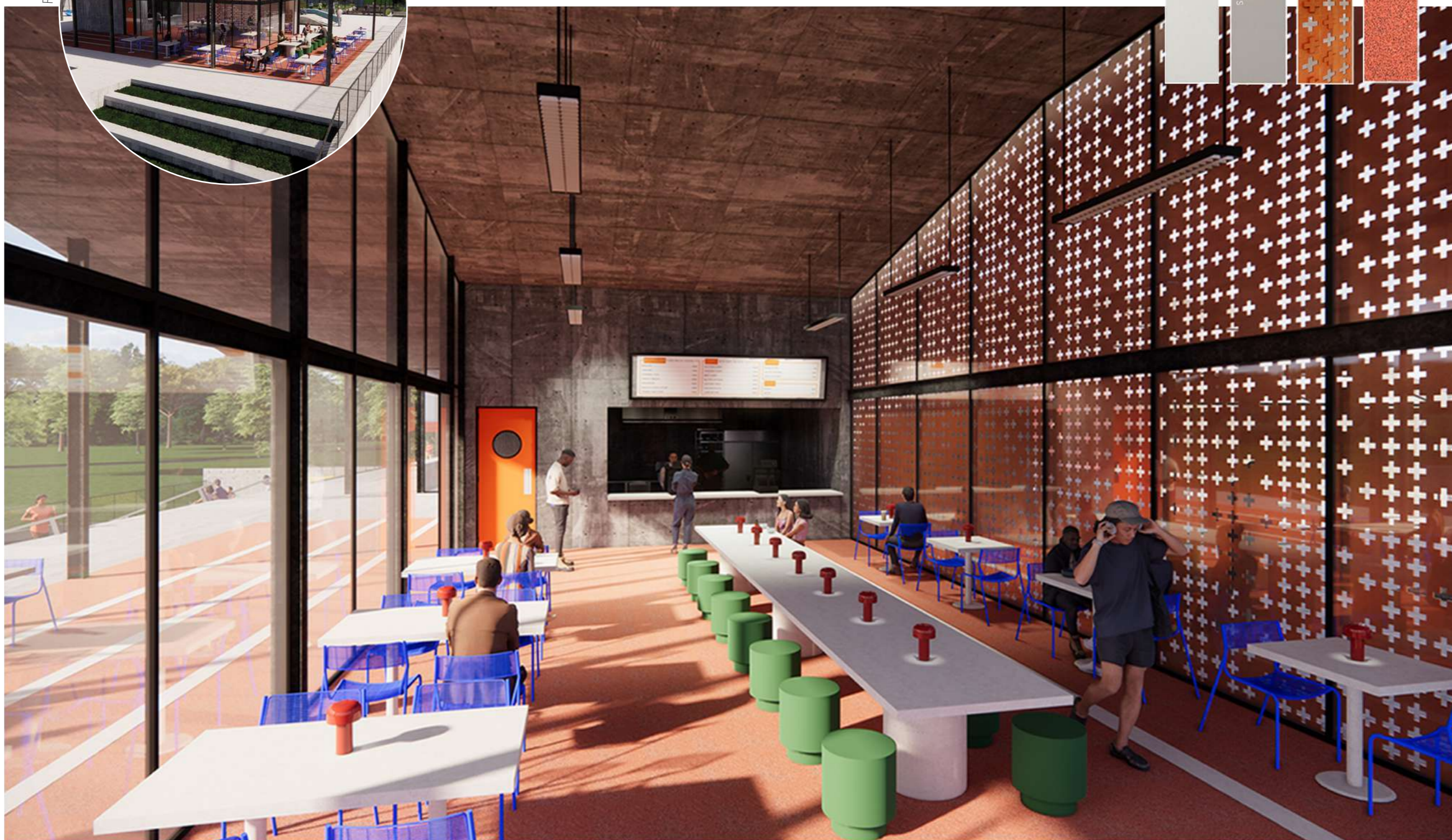
Skate Tunnels Exterior



Skate Tunnels Interior



Skate Tunnels Floor Plan
NTS



Restaurant Interior



Retail Pods



Interactive Skate Elements



Retail Pods Back, Interactive Skate Elements



Main Entrance



Park Walkways



New Trojan Horse Memorial



Front Exterior



Certificates

Awards Ceremony



Competition Entry



In-House Top 5

02 PG BISON

BRIEF: Embark on a design journey to envision the epitome of a luxury desert oasis nestled in the heart of the arid Tankwa Karoo. This distinctive space is to be a harmonious blend of opulent residence, inviting entertainment areas, and meticulously landscaped surroundings. The design must not only cater to the indulgence of its inhabitants but also pay homage to the fundamental human needs of eating, sleeping, bathing, and socializing, drawing inspiration from the four elements: fire, water, air, and earth.

CONCEPT: In crafting this oasis, my inspiration draws from the earliest inhabitants of the Karoo, the San. Delving into their habits and traditions, I discovered the delicate footprint they left on the land. Much like the San, who treaded lightly, are small in stature, and utilized natural materials from their surroundings, my design echoes this ethos. The San were in awe of the stars, the site plan itself pays homage to the Southern Cross constellation, forming a celestial connection with the vast desert sky.

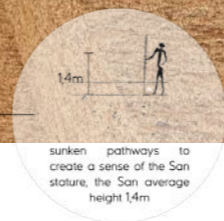
The buildings, mirroring the intimate scale of the San's dwellings, are thoughtfully dispersed across the landscape. Embracing natural materials indigenous to the area, the structures seamlessly integrate with their surroundings.

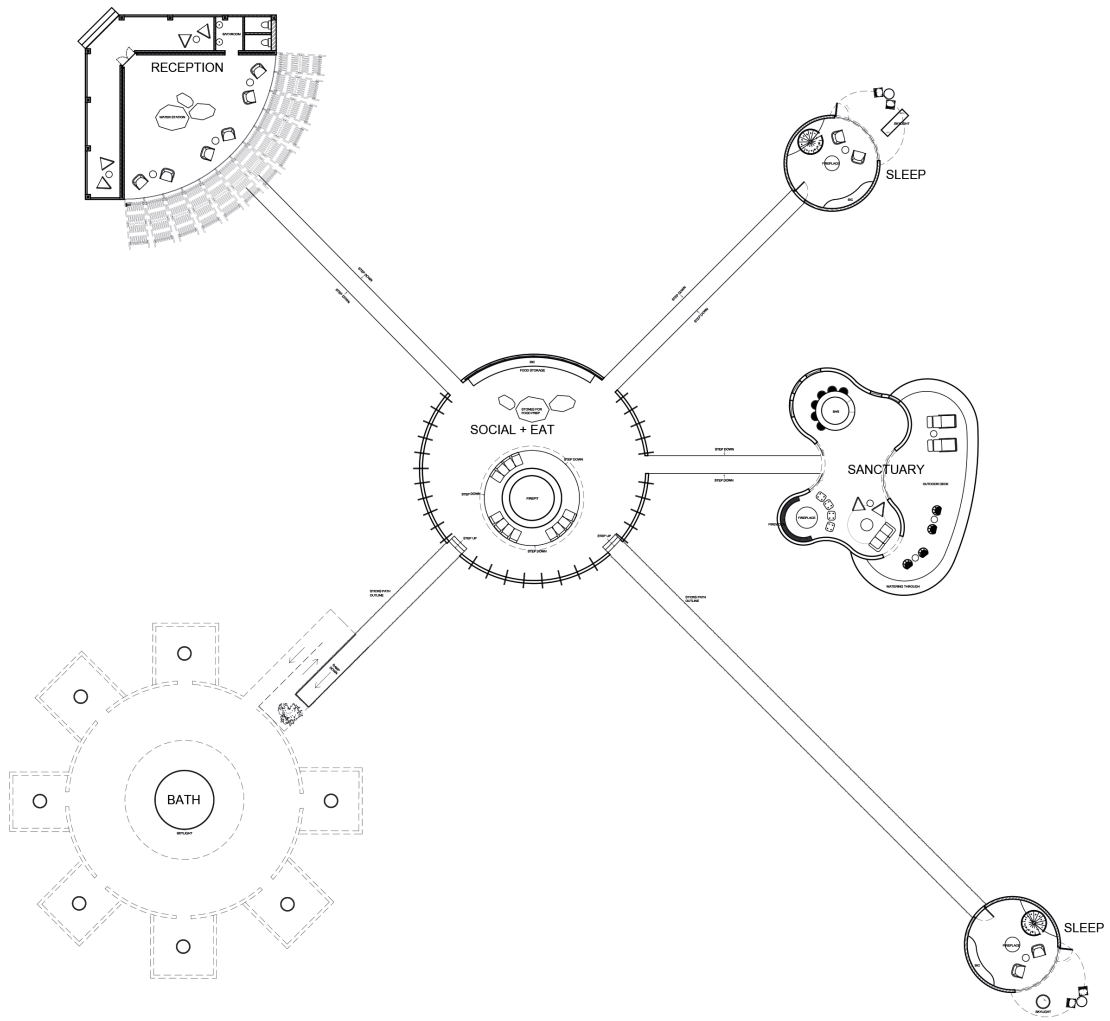
My goal was to craft a sanctuary that not only fulfills the desires of luxury living but also honors the rich history and simplicity of the Karoo's first inhabitants.

Sleep Exterior with Sunken Pathways

!'AUKAROB - land of the thirst

Welcome to !'Aukarob, The Land of Thirst, where the Karoo's arid landscape represents scarcity, longing, and the delicate balance of life. Here, visitors will witness the captivating habits of the San people and the resilient spirit of nature. Our site plan layout, inspired by the Southern Cross, pays homage to the San belief that these stars were once lions transformed by a magical girl. Just as the San tread lightly on their environment, our buildings' footprint will be light and delicate, reminding visitors of the enduring power of the Karoo and our profound connection with the environment. Join us on this transformative journey.





PG Bison - !'Aukarob
 Site Plan
 NTS



Reception Exterior



Top View



Reception Interior



Sleep Outside Braai and Seating Area



Sleep Interior



Social Exterior



Social Interior with Large Fire Pit and Natural Stone Work surfaces



Social Interior with Natural Stone Work surfaces and Built-In Unit



Sloped Walkway to Underground Spa and Bathing Space



Underground Spa with Large Skylight and Pool



Sanctuary Deck and Watering Hole



Sanctuary Fireplace



Sanctuary Bar





In-House 2nd Place

03 HOUSE BENNETT

BRIEF: Design a two-level residence for the Bennett family in the Fernwood Lifestyle Estate, Knysna. Embrace the client's love for traditional farm style aesthetics while adhering to the estate's architectural guidelines. The concept includes four en-suite bedrooms, open-plan living spaces, and expansive entertainment areas with panoramic views of the lagoon and hills. Infuse traditional farm style aesthetics while adhering to estate guidelines. Include a spacious kitchen, scullery, cellar, gym, study, self-contained flatlet, three large garages, and staff accommodation for a seamless blend of style and functionality in both the exterior and interior design.

CONCEPT: House Bennett exudes a contemporary farm-style aesthetic, seamlessly blending rural charm with modern sophistication evident in both its interior and exterior. Drawing inspiration from traditional farm-style elements, this residence embodies a harmonious fusion of the classic and the contemporary.

A central aspiration for House Bennett was to cater to the Bennett family's passion for socializing and entertaining. Accordingly, the design prioritizes the creation of expansive living and socializing spaces. This deliberate approach extends beyond the interior, seamlessly integrating with the outdoors to provide ample areas for the family to enjoy the surrounding landscapes and breathtaking views. The result is a residence that not only captures the essence of modern farm-style living but also invites a warm and communal atmosphere, reflecting the Bennett family's love for gatherings and shared moments.





House Bennett
Ground Floor
NTS



House Bennett
First Floor
NTS



Front Elevation



Side Elevation



Side Elevation



Back Elevation



Entrance Courtyard



Garden and Guest Flat



Outdoor Patio and Pool



Outdoor Built-In Braai Area



Dining Area and Built-In Drinks Cabinet



Lounge Area



Kitchen

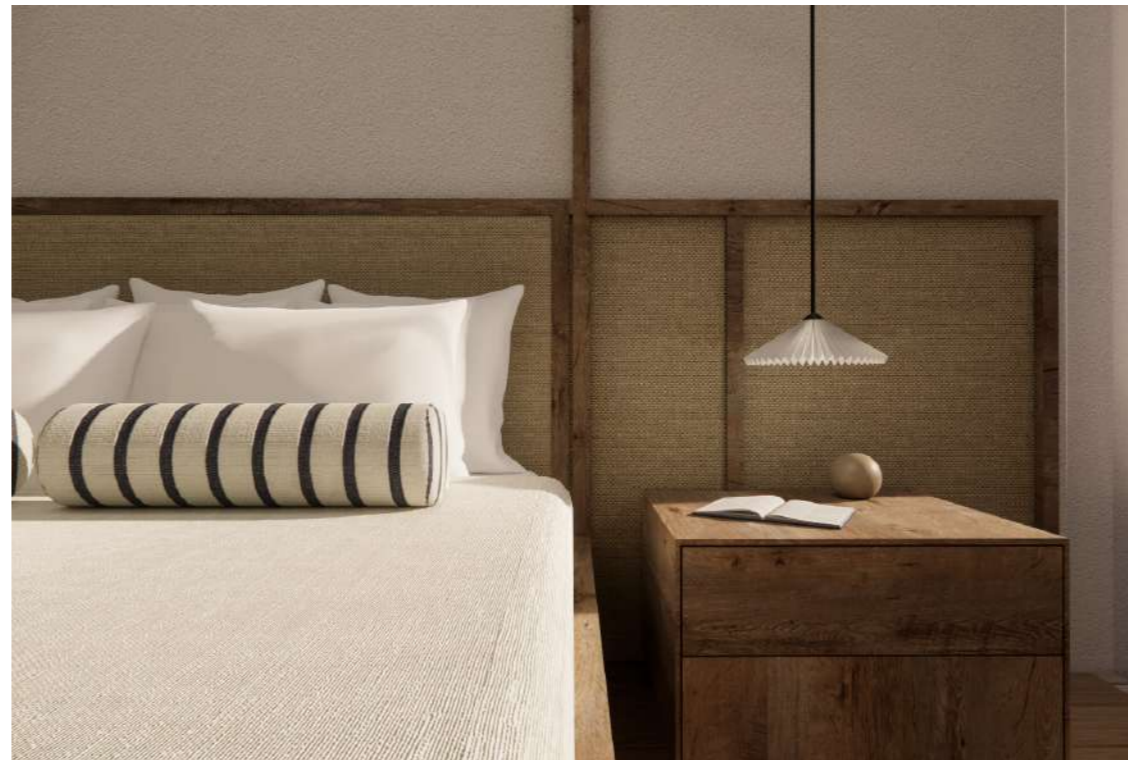


Breakfast Nook

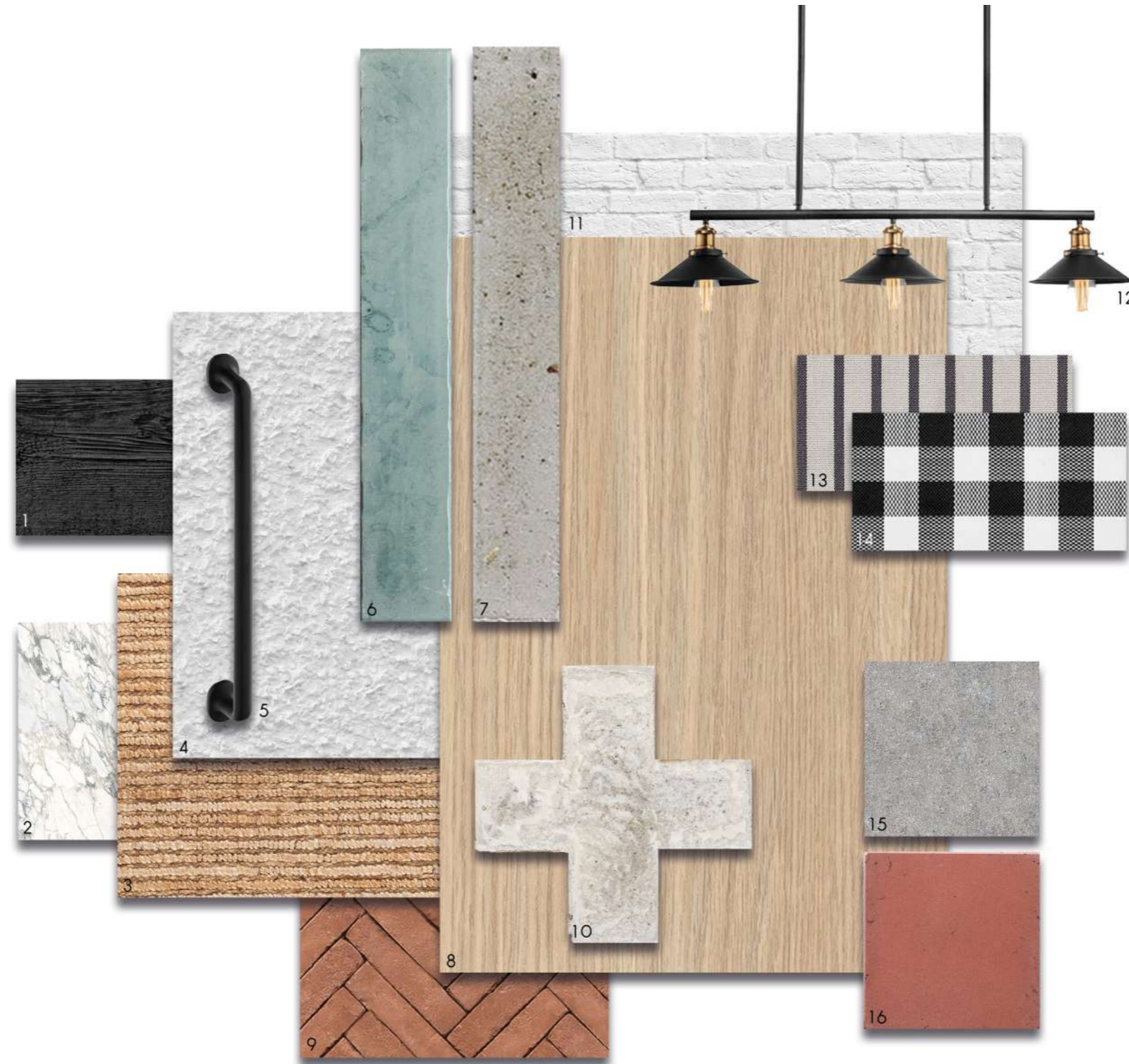
Master Bathroom



Master Bedroom



Master Bedroom Detail



1. Black Stained Oak. 2. Arabescato Lia Polished Marble, Womag. 3. Coir Boucle Rug, Coirtex. 4. Exterior Paint Texture Aztec, Col Orchid Bay S19928-E, Marmoran. 5. Kitchen Handle Matt Black 252mm CHBH79. 6. Bau Tile Silk Finish Colour Kiepersol, Wolkberg. 7. Stacker Tiles Matt Speckled Glaze ENA8BE, Veelvlaak. 8. Engineered Hardwood Flooring Ona Living Brushed, Oggie. 9. Klompie Bricks, Lanes Ceramics. 10. Cross Tile Silk Finish Colour Luna, Wolkberg. 11. Bagged Brick Exterior. 12. Rustic Trio Pendant, Elevenpast. 13. Striped Fabric, Mavromac. 14. Gingham Fabric, St Ledger and Viney. 15. Dry Shake Screed Floor Finish colour Pewter, Cemcrete. 16. Pixel Tile Dimension Finish colour Terracotta, Wolkberg.



In-House 1st Place

04 ATLANTIS ABYSS

BRIEF: Students will collaborate in groups to design a virtual adult nightclub within the metaverse. Develop an original nightclub theme and spaces that push creative boundaries. Apply interior design fundamentals such as ergonomics, spacial planning and lighting to the virtual realm. Requirements: Brand your club cleverly and choose appropriate typography; reception/hostess/welcoming/waiting area; unisex bathroom(s); multi level bar experience(s); slow lounge(s).

CONCEPT: Atlantis Abyss is where reality fades and adventure begins. A world where the lost city of Atlantis Abyss is reborn as a pulsating nightclub and an immersive escape room. Solve intricate puzzles while navigating hidden chambers. Collaborate with fellow explorers and forge new bonds. As mysteries unravel the nightclub's energy ignites. Dance between ancient ruins, swept away by the music and the magic of a city brought back to life. The Atlantis Abyss awaits. Dare to enter?

ATLANTIS ABYSS



LOST CITY OF ATLANTIS



ANCIENT GREEK ARCHITECTURE AND MYTHOLOGY

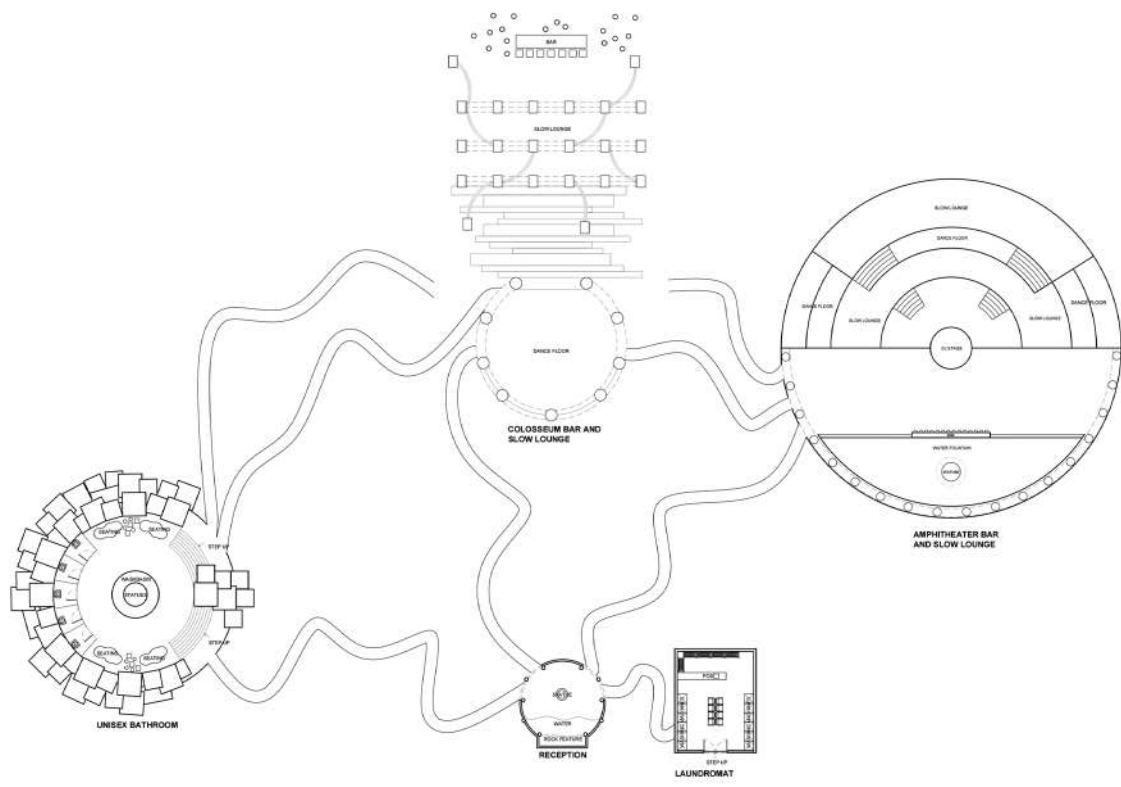


METAVERSE - UNLIMITED POSSIBILITIES



OCEAN ELEMENTS





Atlantis Abyss
 Floor Plan
 NTS



Apollo's Temple Slow Lounge



Apollo's Temple Dance Floor



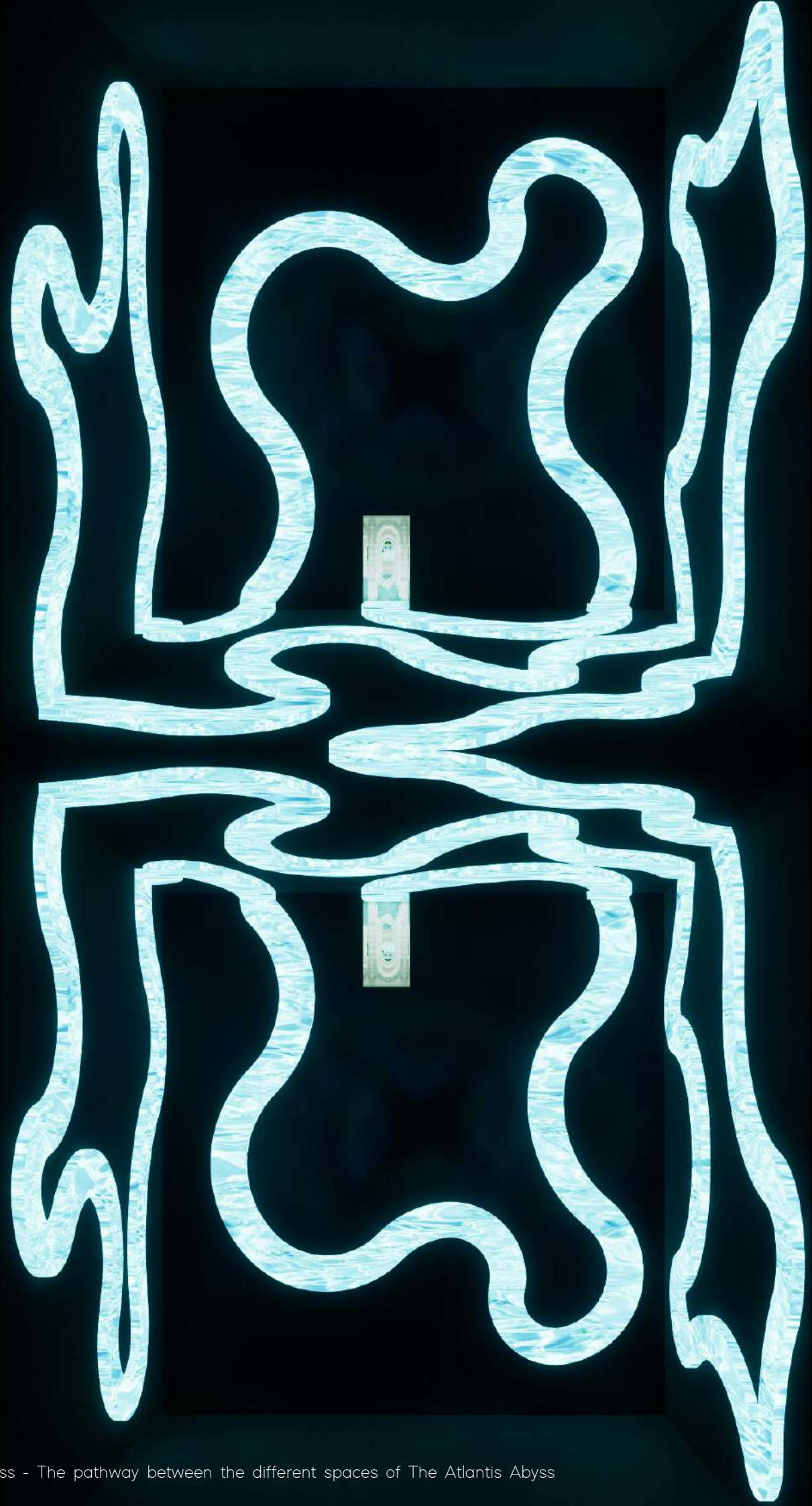
Video Tour



Poseidon's Laundromat - The Entrance To The Game



Poseidon's Laundromat - Create Your Avatar And Enter Through The Washing Machine



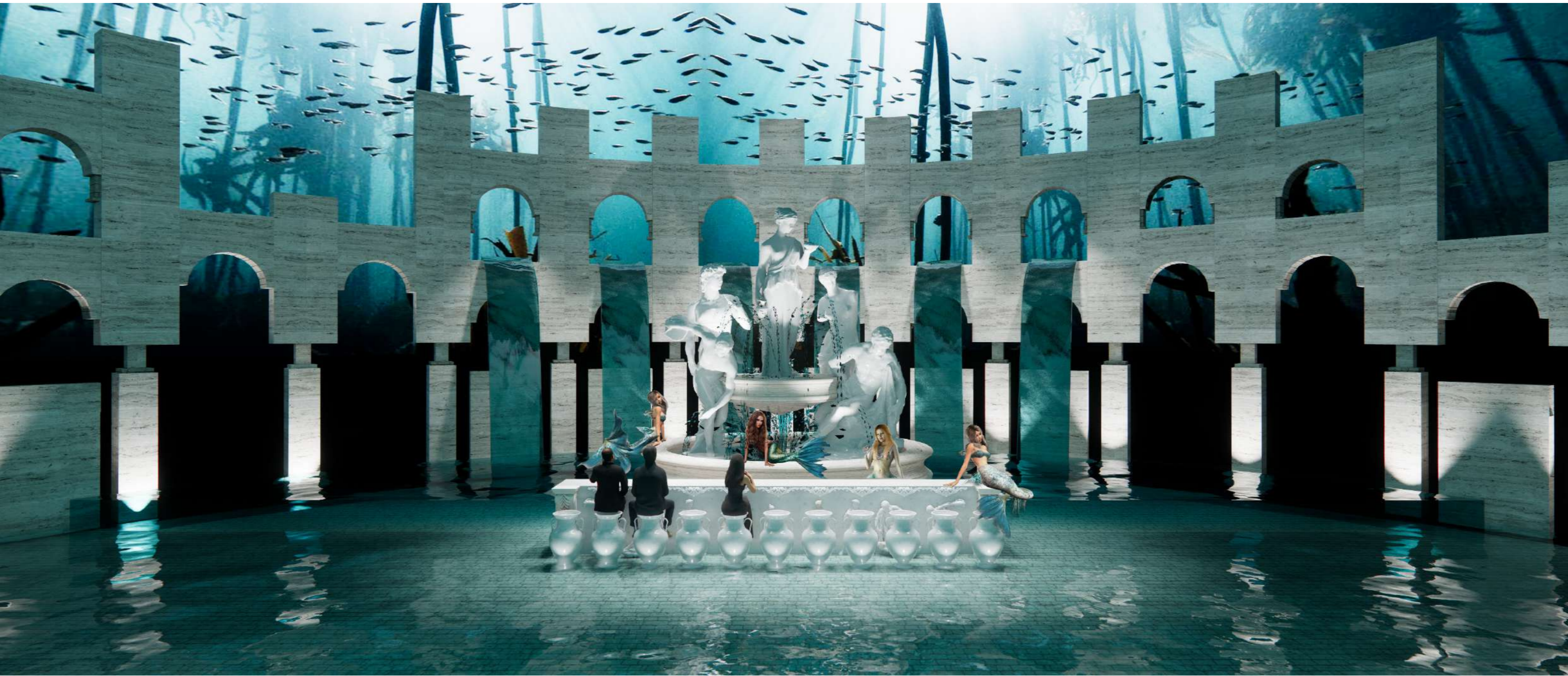
The Abyss - The pathway between the different spaces of The Atlantis Abyss



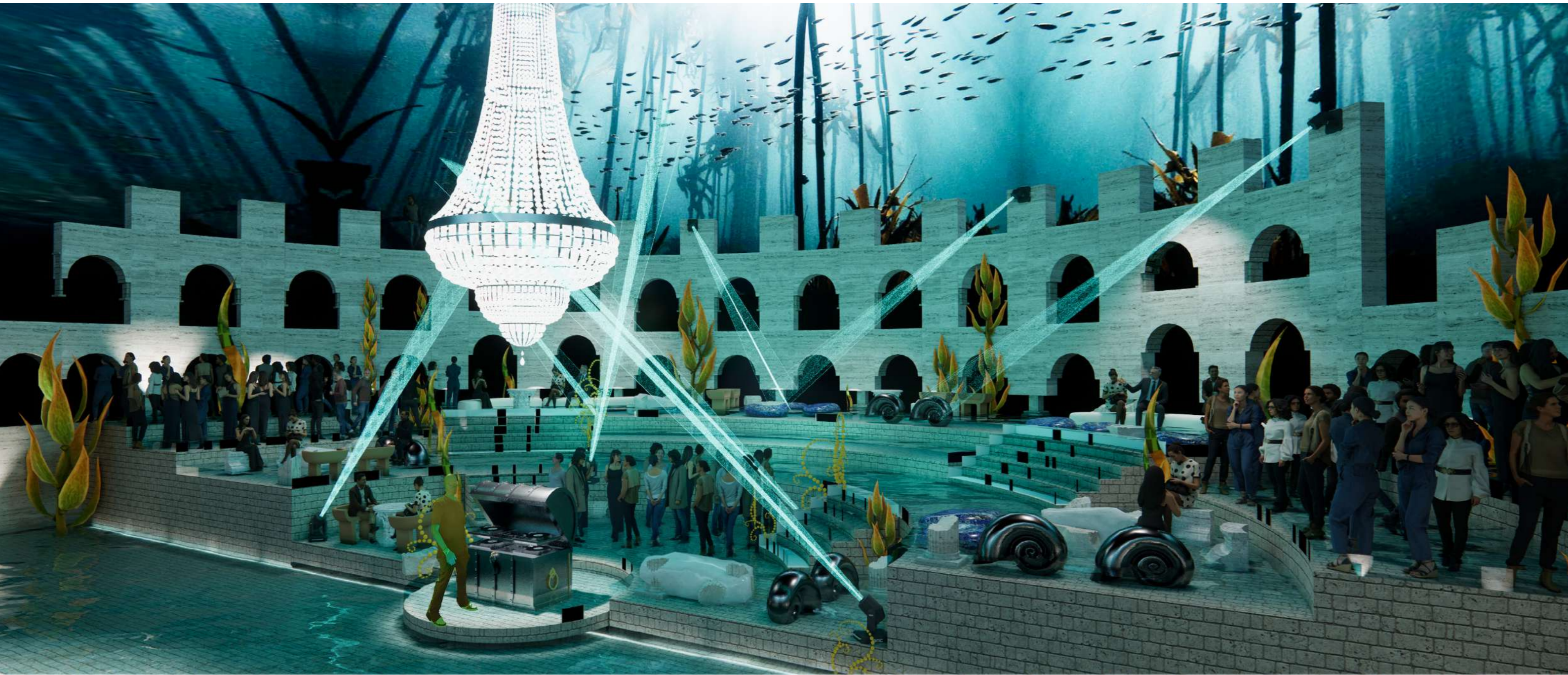
Reception



Zeus' Chambers - Unisex Bathrooms



Triton's Teatro Bar



Triton's Teatro Slow Lounge and Dance Floors

05 STAY UNIQUE

BRIEF: Create a distinctive and innovative cabin design for Stay Unique, with plans to construct up to six cabins in 2023. These cabins will be strategically placed within a 2.5-hour radius of Cape Town in the Western Cape, each nestled in distinct and picturesque locations. The design directive emphasizes drawing inspiration from the natural surroundings to achieve a timeless and premium aesthetic.

The cabins must conform to a space of 9/10 x 3.5/3.8 meters, resulting in an interior flooring space ranging from 32 to 38 square meters. The exterior decking is expected to span between 35 and 45 square meters.

CONCEPT: Immerse yourself in the enchanting allure of the Haweqwa Nature Reserve, where mountains, valleys, and rivers weave a captivating tapestry adorned with dramatic waterfalls. A mere two-hour drive from Cape Town, this accessible haven offers mesmerizing mountain vistas, amber-hued mountain pools, and the allure of cozy winter days by the fireplace.

Our Unique Stay Eco Cabin, strategically positioned beside a tranquil river, draws its inspiration from the indigenous Cape Granite, the amber waters that meander through the reserve, and the vibrant tones of the Fynbos. As you embark on an unforgettable journey within the Haweqwa Nature Reserve, our cabin design aims to seamlessly blend with and enhance the natural beauty of the surroundings, providing a unique and immersive experience for Stay Unique patrons.



STAY UNIQUE
LUXURY IS THE LOCATION



Eco Cabin Exterior with Deck



Stay Unique
 Floor Plan
 NTS



Lounge with Fireplace



Kitchen



Close Up View of Closet

Reading Nook with Built-in Cupboard



Stay Unique
Elevation A
NTS



Stay Unique
Elevation B
NTS



Bedroom



Bathroom



Video Tour



Eco Cabin Exterior



1. Kitchen Cabinets Colour Lounge Brown SO28, Niemann. 2. Natural Cape Granite, Artmar. 3. Crudo Rustic Engineered Wood Flooring, Oggie. 4. Exterior Decking and Cladding, Rhinowood. 5. Cretecote Colour Mist, Cemcrete. 6. Hand Made 3D Pyramid Tile BKTRD 3C, Veelvlak. 7. Brass Trim and Finishes. 8. Maroon Kit Kat Tile, Douglas Jones. 9. Standard Colour Cauliflower, Quartz Carpet. 10. Interior Paint Colour Evening Mist, Plascon. 11. 4046 Excava, Caesarstone.



1. Berber runner, Herringbone 2. Leather lounge chair, Cielo 3. Glass pendant light, Elevenpast 4. Local block print art, Kirtsen McClarty 5. Floor lamp, Knus 6. Outdoor table, Hertex 7. Custom made runner, Rugalia 8. Palissade outdoor chair, Crema 9. Outdoor lounger, Vetsak 10. Mungur wood stool, Weylands 11. Undermount sink, Flush 12. Gunmetal tap, Flush 13. Pitt cooking system, Euro Appliances 14. Round steel basin, Flush 15. Tiger bronze mixer, Flush 16. Combination shower rail, Flush

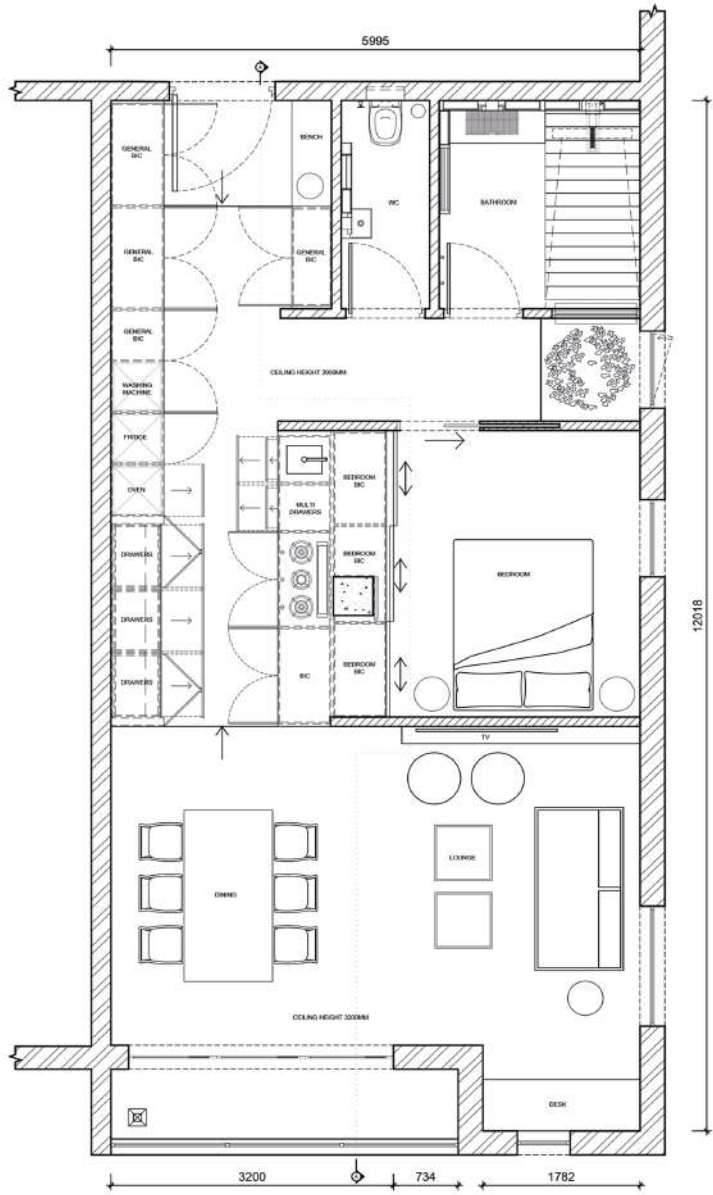
06 ON Q

BRIEF: Cube Developers are looking for a beautifully curated show apartment. Your task is to design one of three apartments according to one of these three design aesthetics: minimal, contemporary or classical. Requirements: an open plan living / dining / kitchen area. One main bedroom. One bathroom. BIC. A Plan and elevation. Detailed kitchen and bathroom drawings.

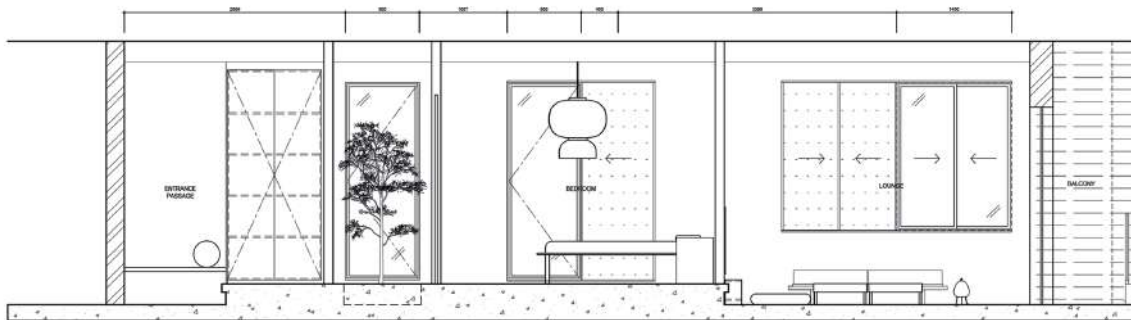
CONCEPT: Situated on the trendy streets of De Waterkant is Apartment On Q. This apartment is an escape from the bustle of the City, a space which is calm and relaxing. This is achieved through soft lighting, a monotone colour scheme, greenery, and only using the most essential decor and furniture pieces.



Lounge and Dining Area



On Q
 Floor Plan
 NTS



On Q
 Elevation AA
 NTS



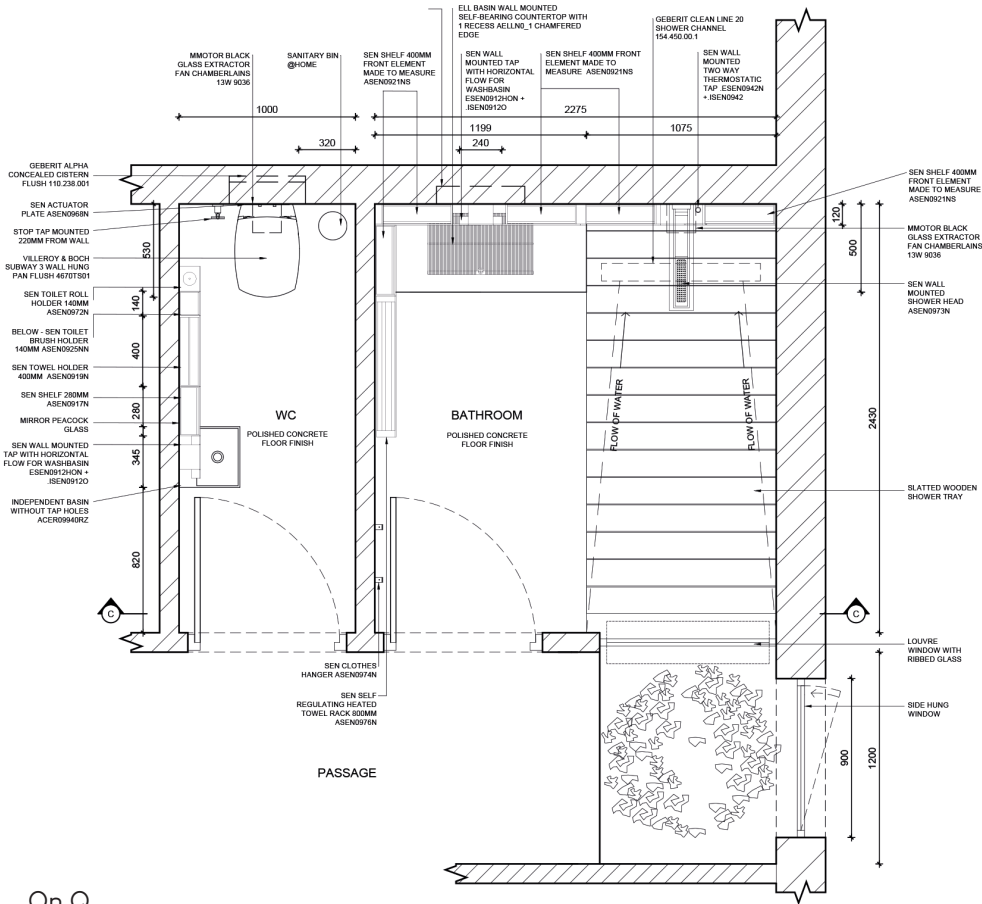
Lounge, Dining and Study Area with View of the Balcony



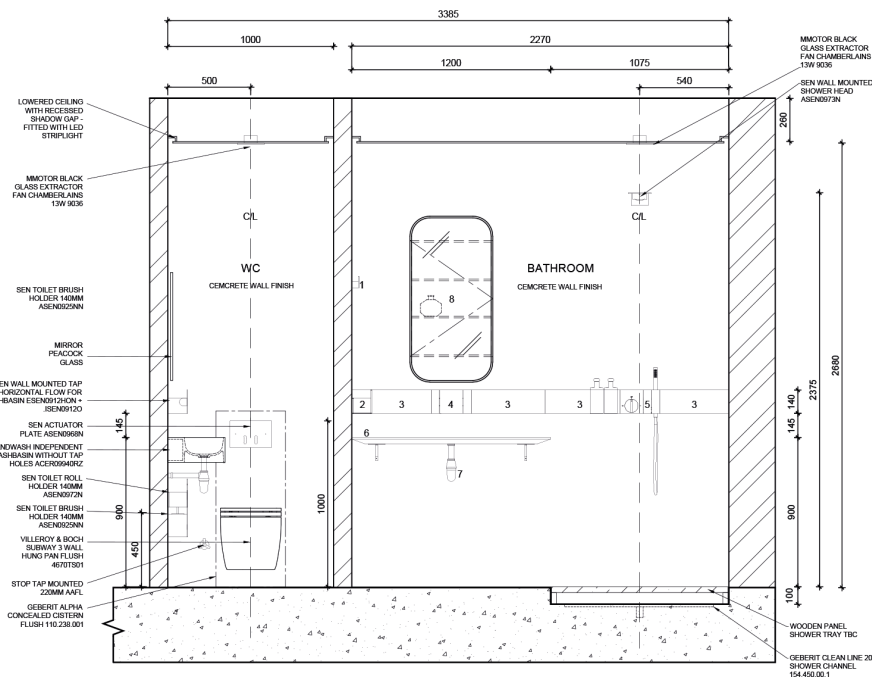
Bedroom



Bathroom



On Q
Bathroom Detail
NTS

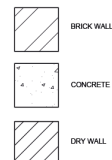


GENERAL NOTES

- POSITION OF ACCESSORIES TBC ON SITE BY DESIGNER PRIOR TO INSTALLATION
- ALL SEN FITTINGS TO BE IN BLACK BRUSHED ANODISED ALUMINIUM
- TOILET MOUNTED ON C/L 450MM AFFL TO TOP OF SEAT
- ACTUATOR PLATE ON C/L AT 1000MM AFFL
- C/L OF THE HOOKS TO BE 1800MM AFFL
- BASINS TOP TO BE AT 900MM AFFL
- SEN TAP TO BE 145MM ABOVE BASINS
- SHOWER HEAD TO BE MOUNTED 2370MM ABOVE WOODEN TRAY
- SEN ITEMS TO BE MOUNTED AT SAME LEVEL
- SHOWER CHANNEL TO BE INSTALLED AT 5 DEGREE ANGLE
- EXTRACTOR FAN TO BE INSTALLED ON SEPARATE SWITCH
- NBI REFER TO TECHNICAL DATA SHEET FOR ALL FITTINGS

KEY

- 1- SEN CLOTHES HANGER ASEN0974N
- 2- SEN SELF REGULATING HEATED TOWEL RACK 800MM ASEN0976N
- 3- SEN SHELF 400MM FRONT ELEMENT MADE TO MEASURE ASEN0921NS
- 4- SEN WALL MOUNTED TAP WITH HORIZONTAL FLOW FOR WASHBASIN ESEN0912HON + ISEN0912O
- 5- SEN WALL MOUNTED TWO WAY THERMOSTATIC TAP ESEN0982N + ISEN0984Z
- 6- ELL BASIN SELF-BEARING COUNTERTOP WITH 1 RECESS AELLNO_1 CHAMFERED EDGE
- 7- SLEEK BOTTLE TRAP BLACK VICTORIAN BATHROOMS 22186100
- 8- RECTANGULAR THIN FRAMED RECESSED CABINET MIRROR FLUSH C-ME-1



On Q
Bathroom Detail
Elevation CC
NTS



Entrance Way



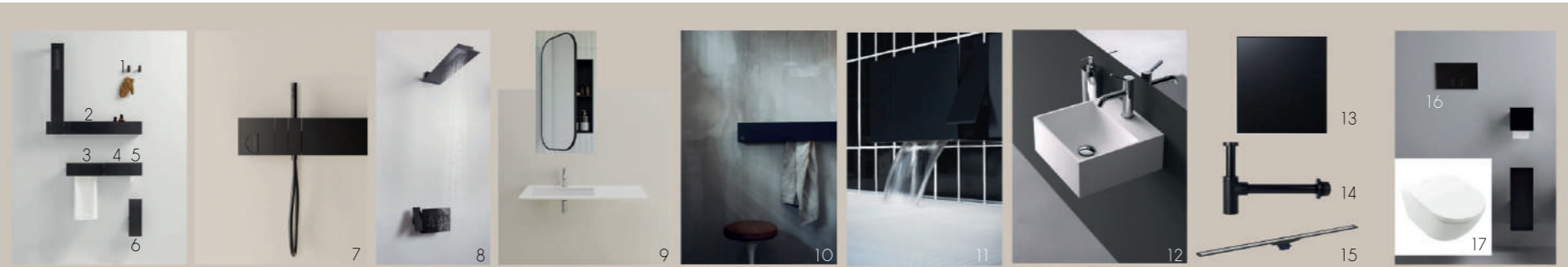
Kitchen and View of Passage



Concealed Kitchen Open and Close



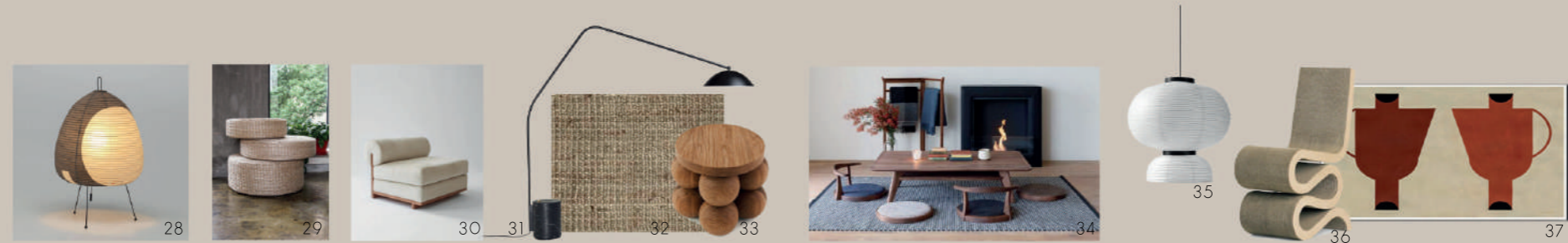
1. concrete floors and wall 2. jute rug, pezula interiors 3. sand stone step at entrance, builders merchant 4. ribbed glass, peacock glass 5. bic laminate, nieman laminate lounge brown s028 6. washed oak, furniture and cladding 7. sliding screens' paper, waza japan 8. compact laminate with fenix steel NTM cladding; kitchen doors; max on top 9. grasscloth wall paper, hertex 10. textured wallpaper cladding for doors and bedroom sliding doors, hertex 11. cloud tree, folha



1. Wall Hooks. Agape. Sen ASEN0974N. 2. Shelf. Agape. Sen ASEN0921NS. 3. Towel holder. Agape. Sen ASEN0919N. 4. Shelf. Agape. Sen ASEN0917N. 5. Toilet roll holder. Agape. Sen ASEN0972N. 6. Toilet brush holder. Agape. Sen ASEN0925NN. 7. Wall mounted two-way thermostatic tap, with hand shower. Agape. Sen .ESEN0942N+.ISEN0942. 8. Wall mounted shower head. Agape. Sen ASEN0973N. 9. Self-bearing basin. Agape. ELL AELLNO_1. 10. Self-regulating heated towel rack. Agape. Sen ASEN0976N. 11. Wall mounted tap. Agape. Sen ESEN0912HON+.ISEN0912O. 12. Self-independent washbasin. Agape. ACERO9940RZ. 13. MMotors black glass extractor fan. Chamberlains. 14. Black sleek basin bottle trap. Victorian Bathrooms. 22186100. 15. GEBERIT CleanLine20 Shower Channel, Fluish 154.450.00.1. 16. Wall Mounted dual flushplate. Agape. Sen ASEN0968N 17. VILLEROY & BOCH Subway 3 Wall Hung Pan with Soft Close. Flush 4670TS01.



18. Gooseneck kitchen mixer. Flush MK03 19. Stainless steel underslung sink. Smeg mira, Italtile 20. Pull out waste-bin, Sige 503 quadrifoglio 21. Pitt cooking system. Euro appliances 22. 60cm integrated downdraft extractor. Smeg KDD90VXNE. Euro Appliances 23. Smeg built-in electric oven SF630ITVX. Euro Appliances 24. Smeg integrated dishwasher DW17QSA-1. Euro Appliances 25. Smeg 60cm combi integrated fridge-freezer ZAC7176DPN2. Euro Appliances 26. MMotors black glass extractor fan, Chamberlains 27. Light Switches, black sleek range lightswitches.co.za



28. Table lamp Akari Noguchi B5 . Crema 29. Seagrass floor cushions, Weylandts 30. Low sofa, custom 31. Floor lamp. Sten 32. Jute rug. Pezula Interiors 33. Coffee table ref image for custom made low bed 34. Low table and floor seating. Waza Japan 35. Pendant light Formakami JH5, Crema 36. Wiggle chair, Crema 37. Samsung Art TV, Makro

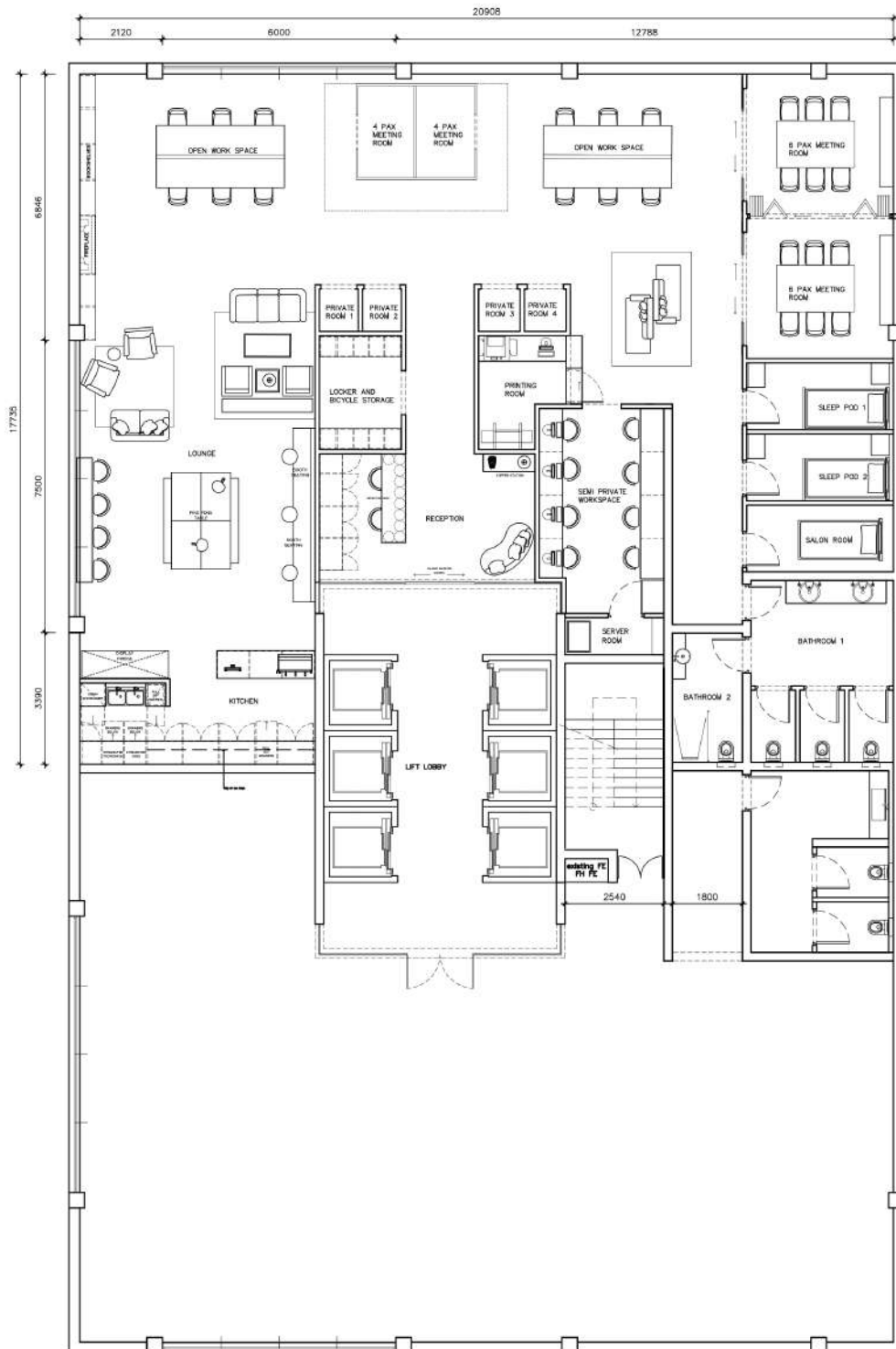
07 OPENROOM

BRIEF: You have been appointed to design an energized, collaborative and members only work space. The space is for creative professionals like Architects, Interior, Graphic, Product and Textile designers. Requirements: a front of house/reception area, seated waiting area at reception, coffee bar, storage space, a detailed kitchen, informal lounge, privacy pods, 4 person meeting rooms, 6 person meeting rooms, open plan workspace and a printer station.

CONCEPT: Openroom is a very exclusive members only office space aimed at creatives. Therefore the space was designed with creatives and their needs in mind. There is an Orms print room for convenience, locker and bicycle storage, sleep pods, a massage room, neuro diverse work spaces, a ping pong table etc. The space is layered with various textures, finishes, art and decor in order to create a space where creatives can flourish.



Reception and Waiting Area

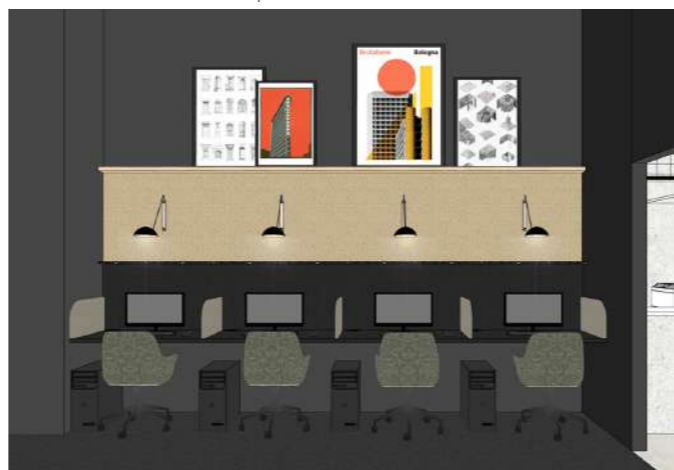


Openroom
 Floor Plan
 NTS

Privacy Pods



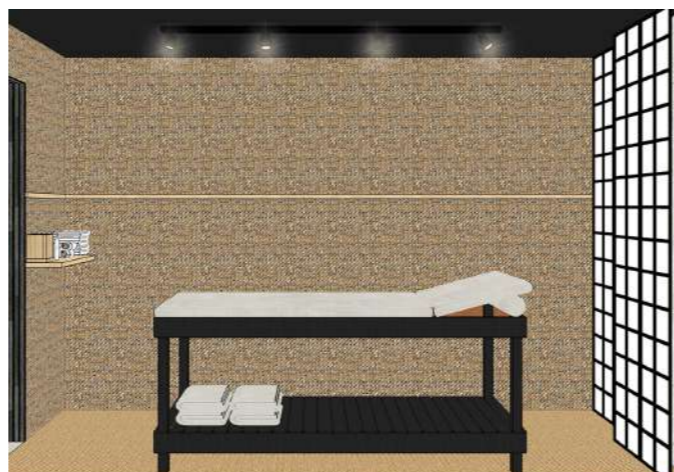
Neuro Diverse Workspace



Meeting Room



Orms Printing Room



Massage Room



Sleep Pod

Lounge Area



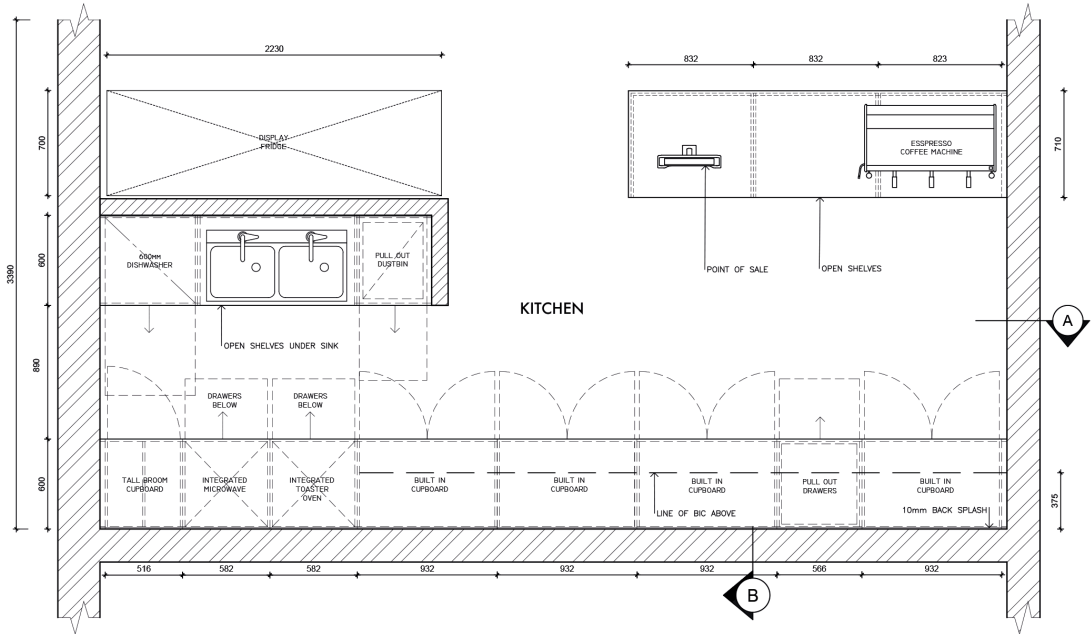
Lounge Area with Rosetta Coffee Shop



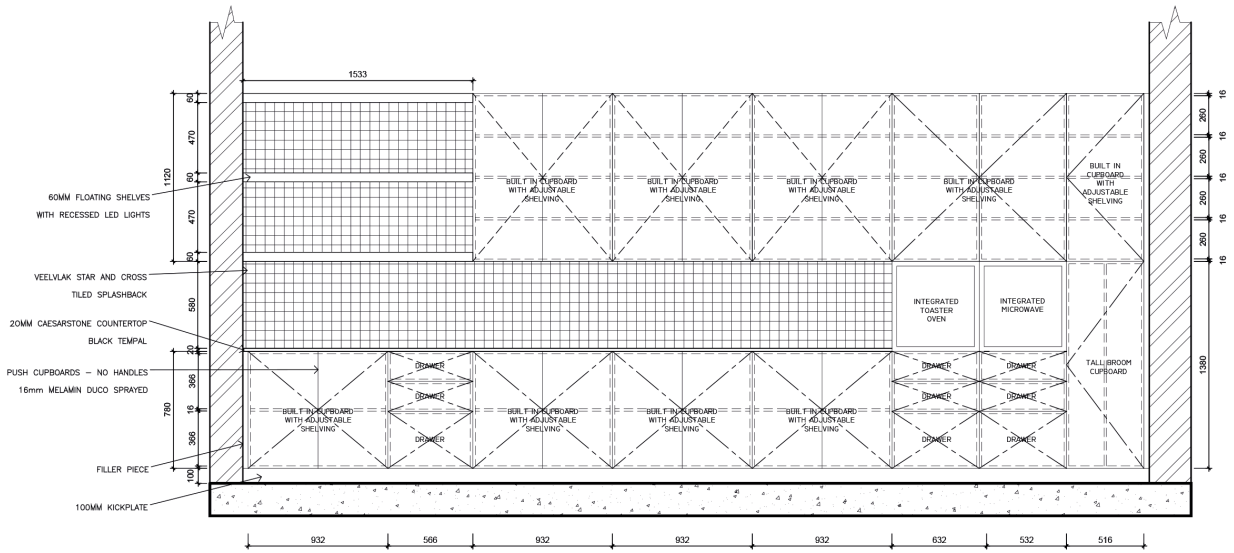
4 Person Meeting Pods



Lounge Area with Ping Pong Table



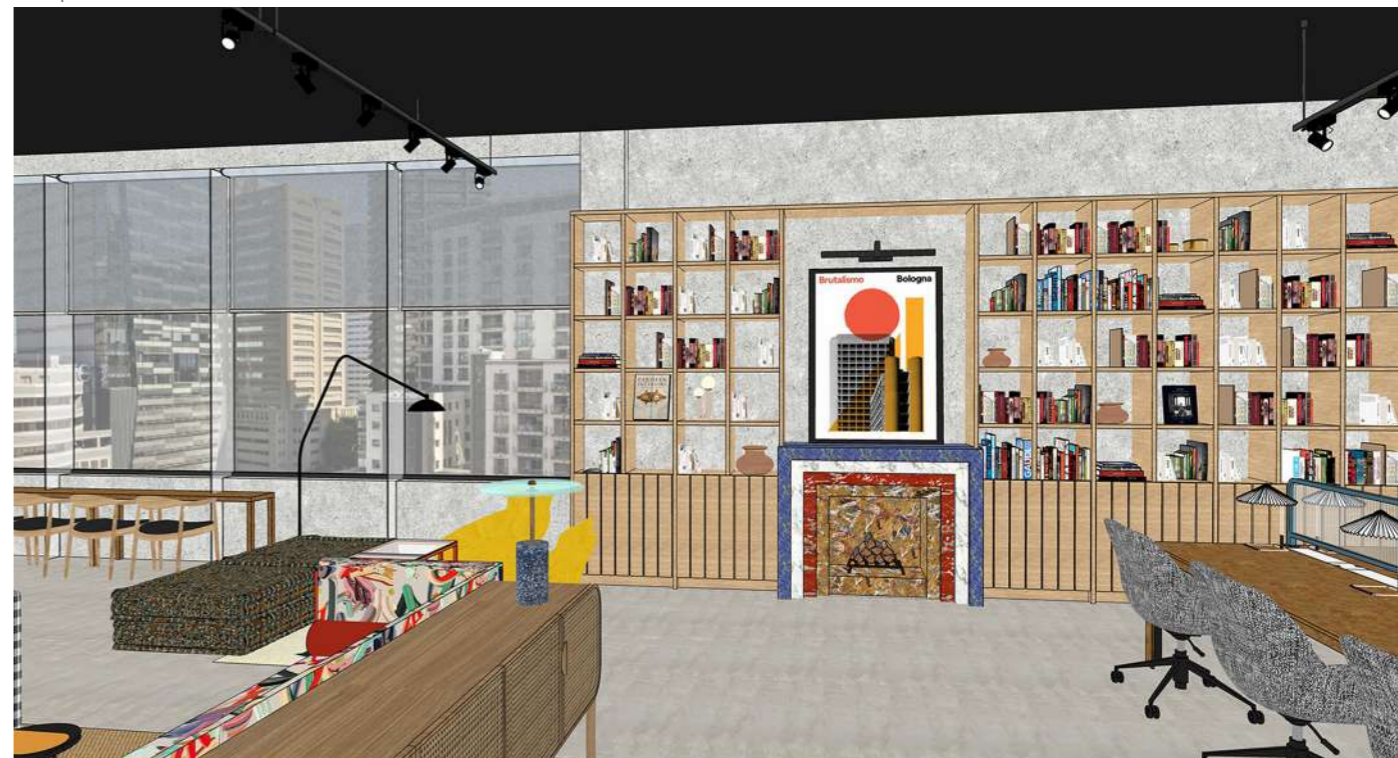
Openroom
Kitchen Plan
NTS



Openroom
Kitchen Elevation A
NTS



Fireplace



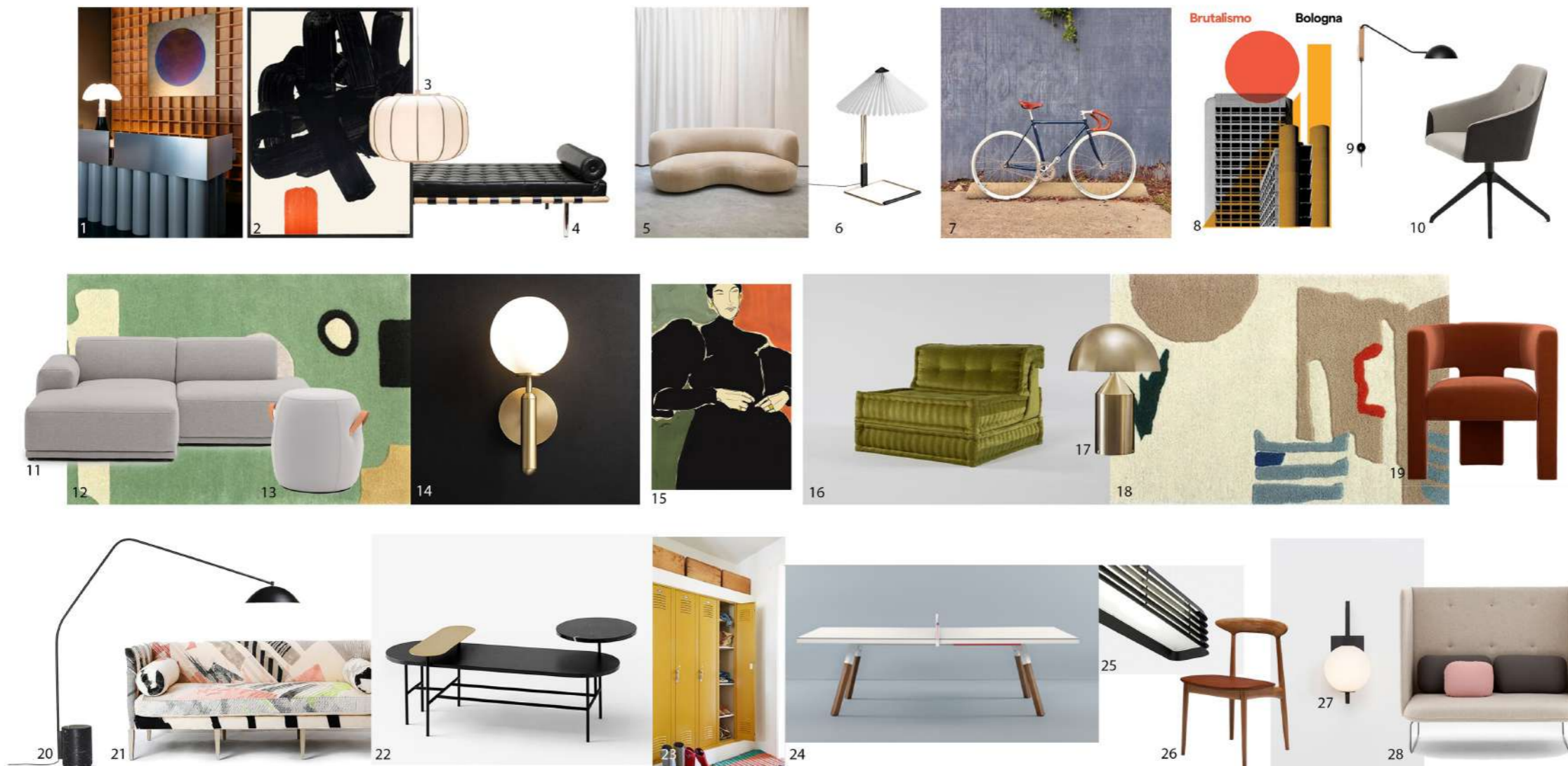
Lockers and Bike Storage



Rosetta Coffee Shop



1. Rattan, Booth Seating | 2. Felt Acoustic Paneling, BuzziPleat | 3. Shoji Paneling, Waza | 4. Multi Coloured Boucle, Hertex | 5. Aluminium for Reception Desk | 6. Fluted Glass, Peacock Glass | 7. Black & White Marble Tile, Stiles | 8. Geometric Wallpaper, Custom Print | 9. Jute Carpet, Pezula Interiors | 10. Olive Linen, Hertex | 11. Rubber Flooring, RS Flooring | 12. Custom Printed Fabric | 13. Shoji Installation Inspiration | 14. Tiger Eye Marble WM600, Womag | 15. Milan Marble WM440, Womag | 16. Blue Marble W45000, Womag | 17. Burlled Wood, Rarewoods | 18. Black & White Gingham, Rubitex | 19. Yellow Velvet, MSR | 20. Timber Terazzo, Foresso | 21. Grass Cloth Wallpaper, Hertex | 22. Boucle Rust Contempo, Hertex



1. Reception Desk, Custom Made | 2. Various Artwork | 3. Botan No Hana Pendant Light, Time & Style | 4. Barcelona Daybed, Knoll | 5. Rose Sofa, Pierre Augustin | 6. Hay Matin Table Lamp, Crema 7. Bicycle | 8. Various Posters, Poster Club | 9. Mantis Swivel Sconce, CB2 | 10. Spectre Engage Mid Back, Ergoform | 11. Modular sofa, Muuto | 12. Fermento rug, Cold Picnic | 13. Bon Bon stool, Ergoform | 14. Fleuren Wall Light, Meraki | 15. Art, Rosie McGuinness | 16. Mah Jong sofa, Roche Bobois | 17. Atollo Table Lamp, 1st Dibs | 18. Patterned rug, Cold Picnic | 19. Armchair, Soho Home 20. Sten Floor Lamp, Norm Architects | 21. Sofa, Anthropologie | 22. Coffee Table, &Tradition | 23. Metal Lockers, Pedersen and Lennard | 24. Ping Pong Table, Antoni Paleja Dezeen | 25. Louvre light, Established and sons | 26. Walnut Chair by Kurt Østervig, 1st Dibs | 27. Miro Sconce, Atelier de Troupe | 28. Indi Seating, Ergoform

08 HARTLEY HOUSE

BRIEF: Hartley House boutique, members only hotel has commissioned you to conceptualise and design the lift, lobby, lounge and reception area of their new premises in New York City. This bespoke hotel will create a platform, celebrating only the very best of international and iconic interior design. Thomas Hartley, art collector and Hartley House hotelier has appointed you to bring home the idea of an exclusive, daring, playful and exquisite space where like-minded, fabulously interesting people come to share their love of all things fine. Requirements: A collection of 3D views that best showcase your lift/lobby/lounge, hand drawn floor plan, hand drawn elevation, detailed reception desk.

CONCEPT: The concept for Hartley House is New York during the 60's. The design will channel an updated Mid-Century Modernism style with a complementing mix of colours, textures, art and patterns. The hotel portrays an exclusive and unique environment in which to escape and be transformed to a timeless world.



Member's Lounge and Library



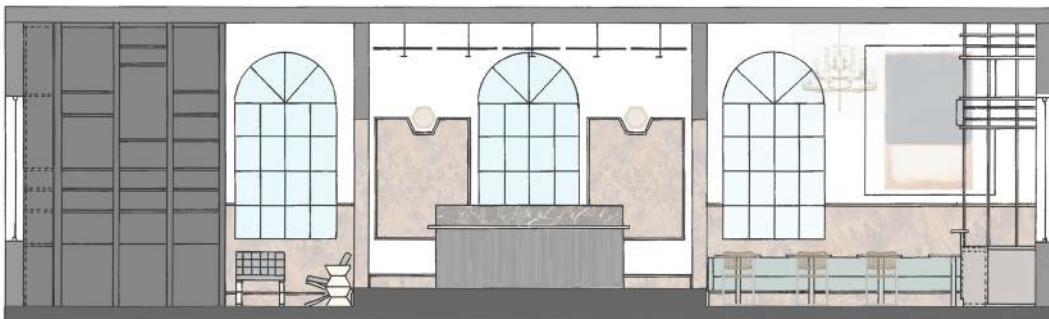
Lobby and Reception



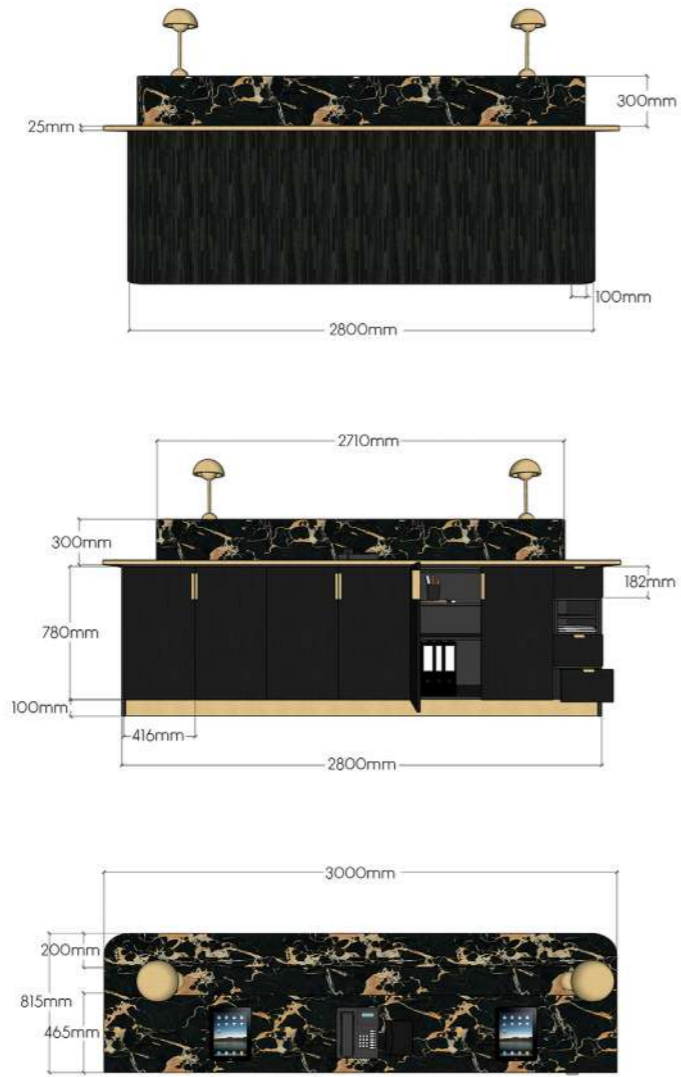
Bar and Restaurant



Hartley House
Floor Plan
NTS



Hartley House
Elevation AA
NTS



Detailed Reception Desk

Lobby and Elevators



Bar and Restaurant



Ida Dining Table
Kelly Wearstler



Aros Square Rug
Nanimarquina



Flower Pot Lamp
&Tradition



Dot Suspension Light
Lumina



Picture Wall Light
Lighting.co.za



Moa Bench
Hommes Studio



Jacques Armchair
Minotti



Saffron Rug
Nanimarquina



2 Seater Sofa
Minotti



Kanyon Coffee Table
Studio Kali



Bobbin Dining Table
Antique, 1st Dibs



Vico Magistretti Chairs
1st Dibs



Bracelona Chair
Knoll



Cesar Side Tables
Minotti



Standing Lamp
Akari



Stripe Sofa
Kelly Wearstler



Curved Chair
Kelly Wearstler



Tiger Wool Rug
Mae Rugs



Round Coffee Table
Kelly Wearstler



Glass Sconce
Ben & Aja Blanc



Cesca Chairs
Knoll



Troupe Rug
Nanimarquina



Utrecht Chair
Cassina



Tres Stripe Rug
Nanimarquina



Bistro Tables
Weylandts



CO70 Sofa
Artifort



Zumba Bar Stool
Kelly Wearstler



1. Marble Tiling, Artmar. 2. Anamur Marble, Womag. 3. Brass Finishes, Brass Age. 4. Marble inlay floor, Womag. 5. Charred Wood. 6. Burlled wood, Rarewoods. 7. Japanese Fan Inspiration. 8. Round Brass Wall Light, Eagle Lighting. 9. Nero Marble, Womag. 10. Stucco Paint Texture, Marmoran. 11. Rattan Webbing, Kehls. 12. Tiger Eye Marble, Womag. 13. Gingham Upholstery, Mavromac.

09 PRODUCT DESIGN

TABLE LAMP

BRIEF: Conceptualise, design and create a working table lamp. You can decide on the purpose of the light i.e. ambient vs task. Hoi P'loy and Newport lighting will be judging your concept as well as the final lamp.

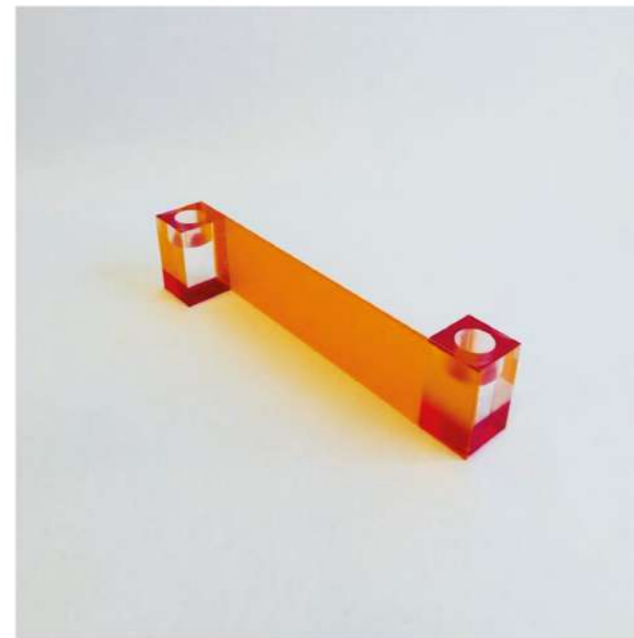
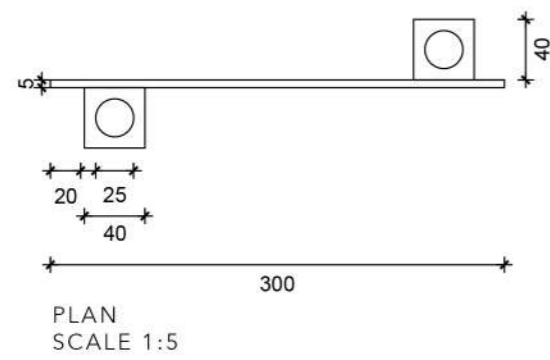
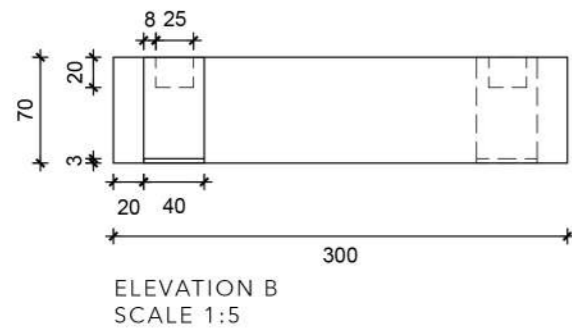
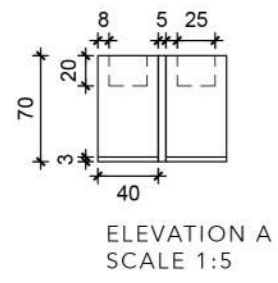
Requirements: Max 1 bulb per light, only a standard E27 or B22 bulb, length of end cable must be min of 1.5 m, the light must be switched on and off with a light switch, the light must be stable, needs to be an original piece.



-  XL G200 VINTAGE STYLE BULB
-  PLASTIC LAMP HOLDER
-  IN LINE SWITCH WHITE
-  TWISTED IVORY FABRIC CORD
-  PLUG WHITE

CANDLESTICK

BRIEF: Design and manufacture a candle stick made of acrylic/perspex. The dimensions should not exceed 70 x 300mm. The candlestick can be any shape or colour of your choice.



10 HAND RENDERS

TRACING TASK

BRIEF: Source an image of an interior designed space that excites you, that you believe to be beautifully designed and curated. Trace, ink and render the image.



PERSPECTIVES

BRIEF: Practice hand drawing and rendering skills through perspectives. Use the plans and inventory list provided to draw the drawing room in one point perspective as well as two point perspective. Render these drawings once completed.



One Point Perspective

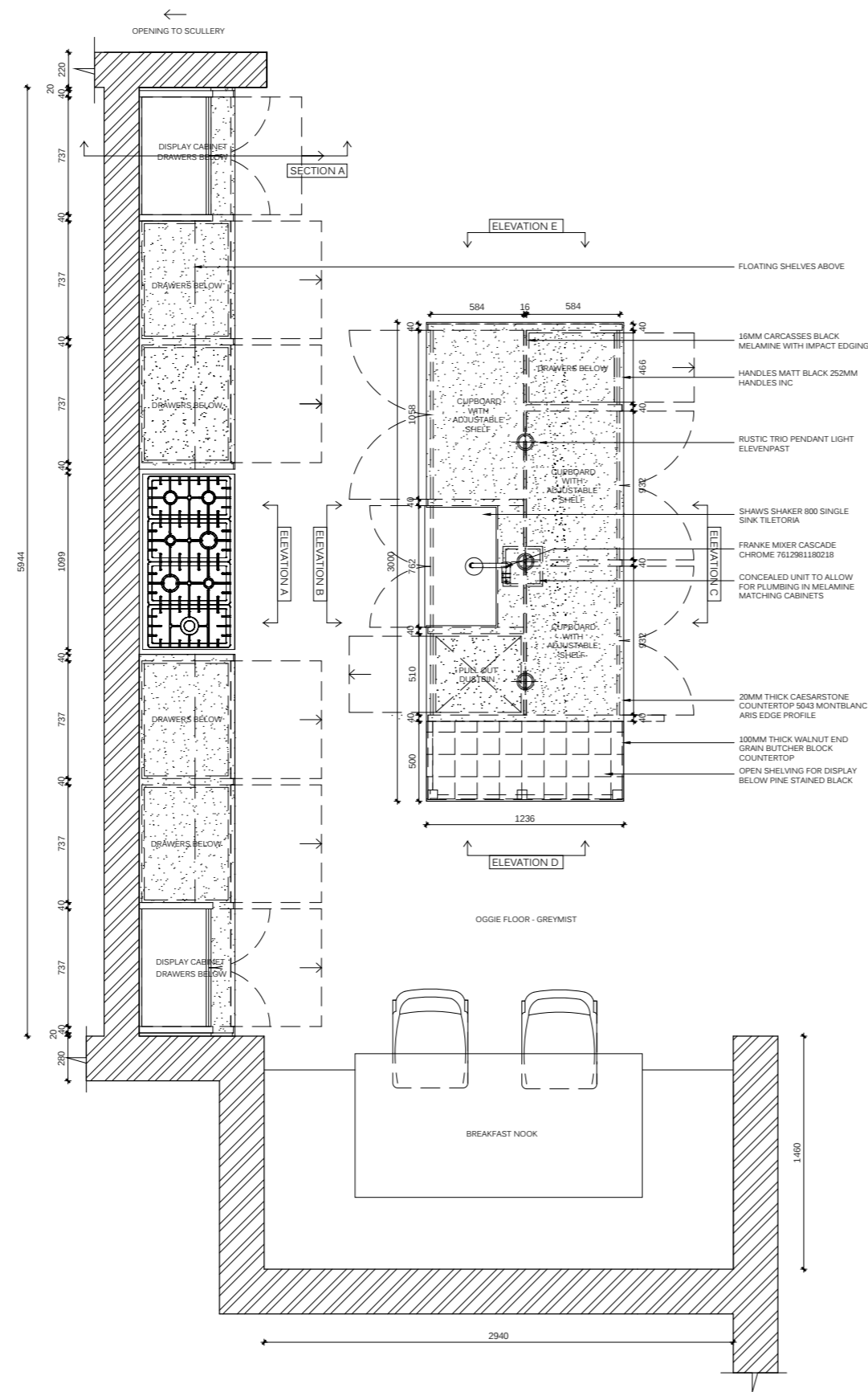


Two Point Perspective

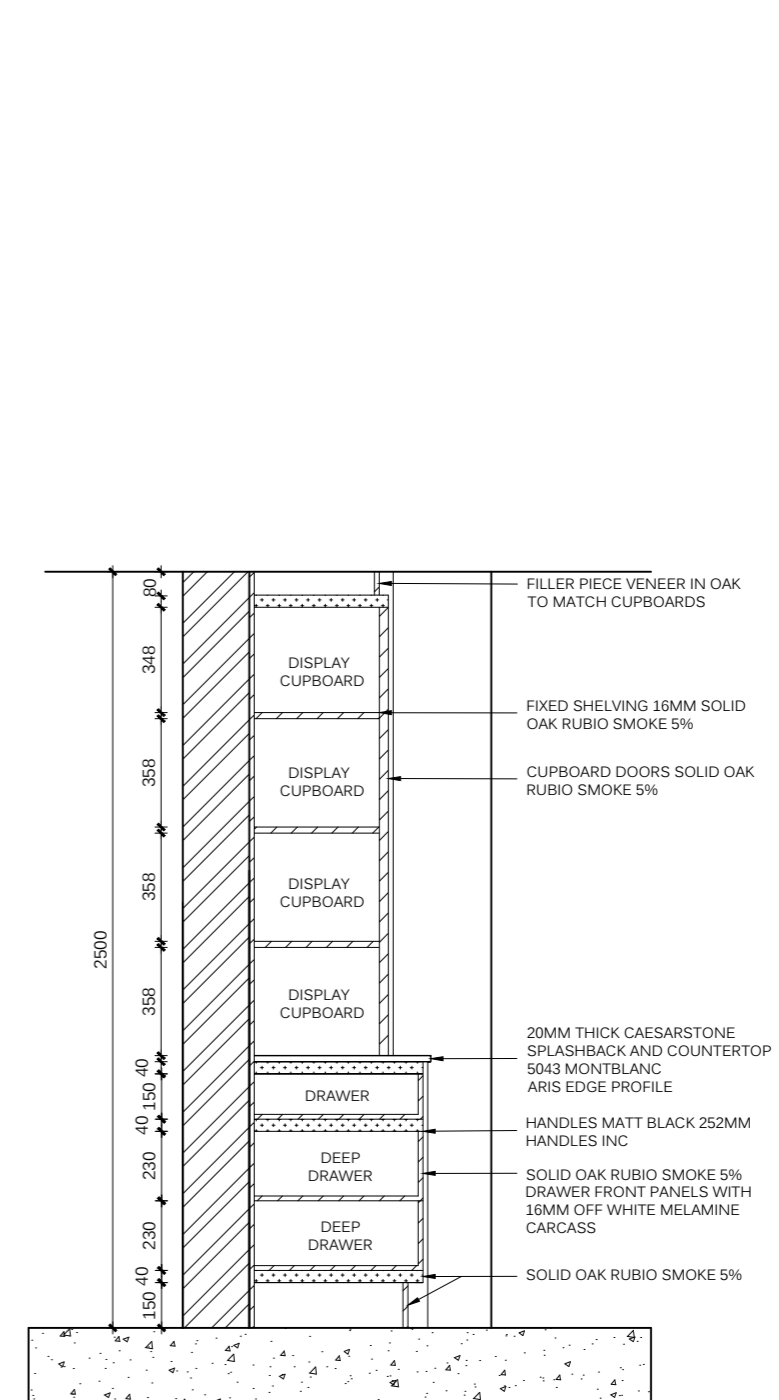
11 TECHNICAL DRAWINGS

HOUSE BENNETT

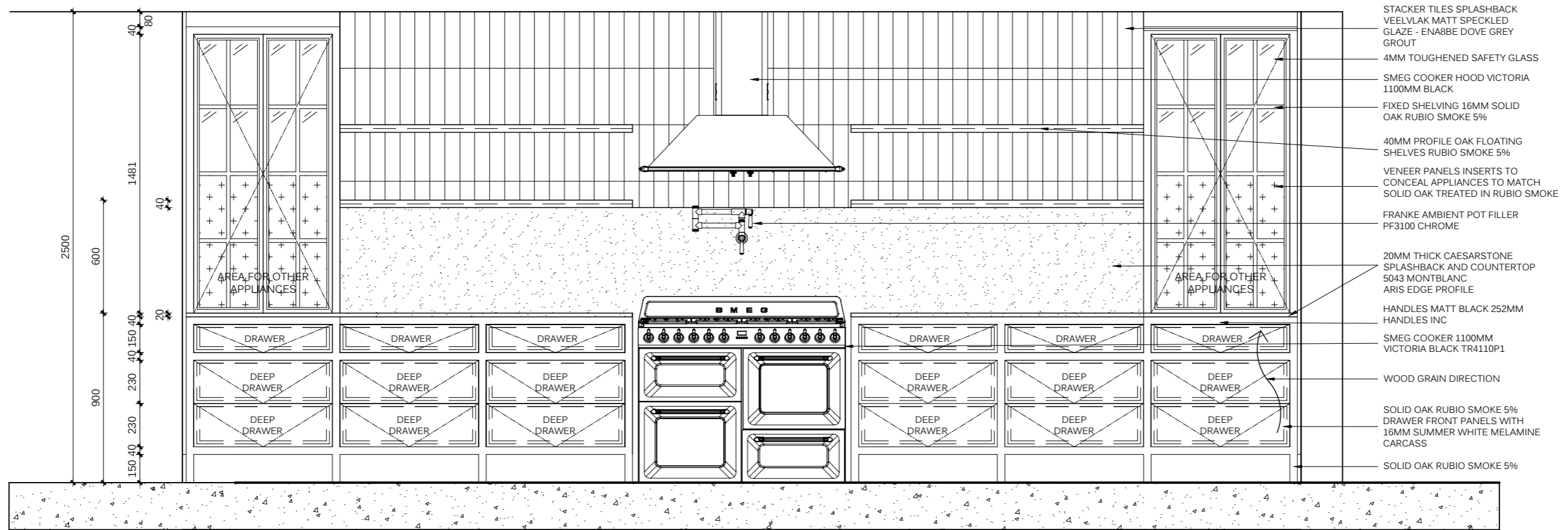
BRIEF: Kitchen Technical Drawings



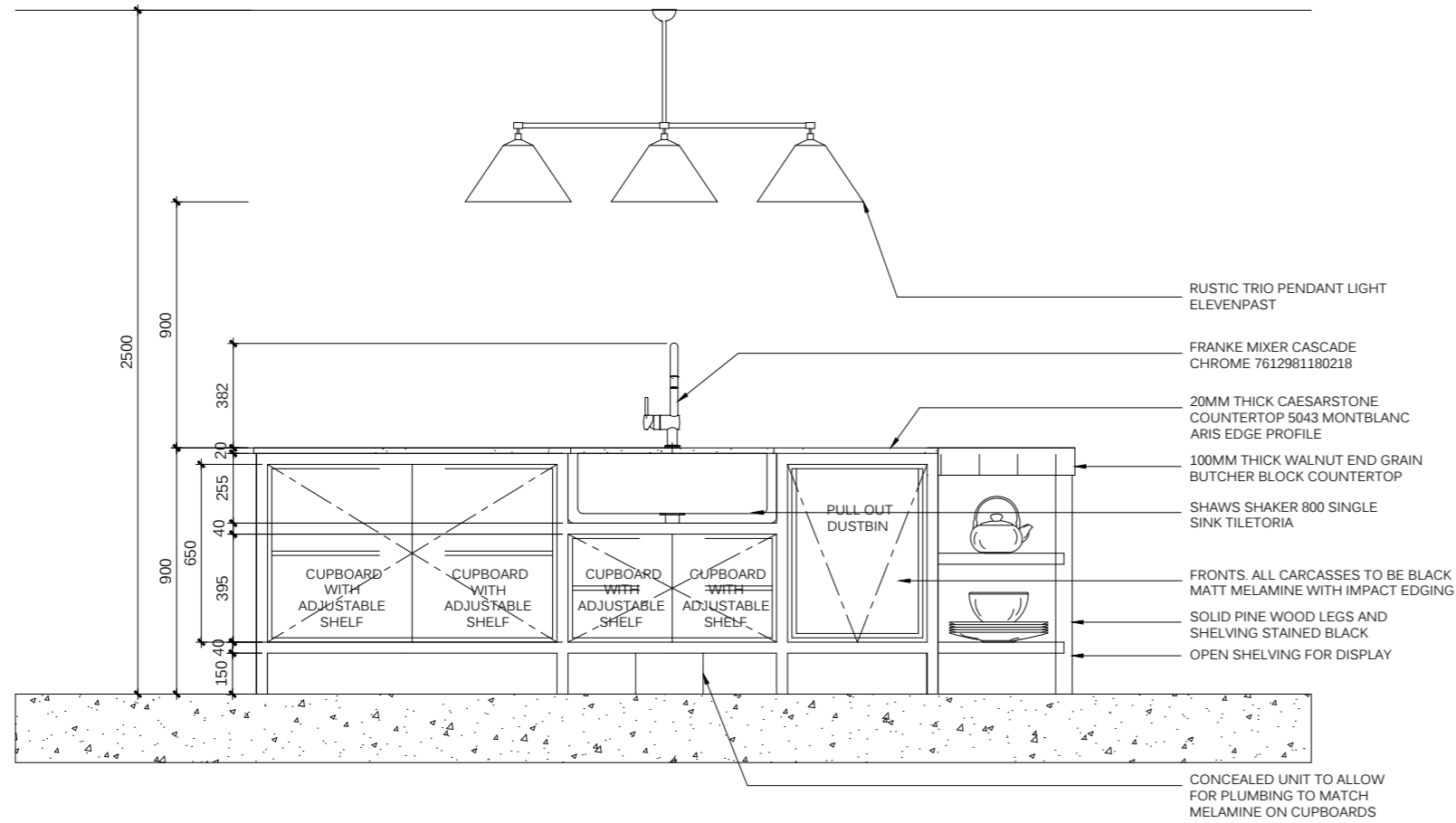
HOUSE BENNETT KITCHEN PLAN
NTS



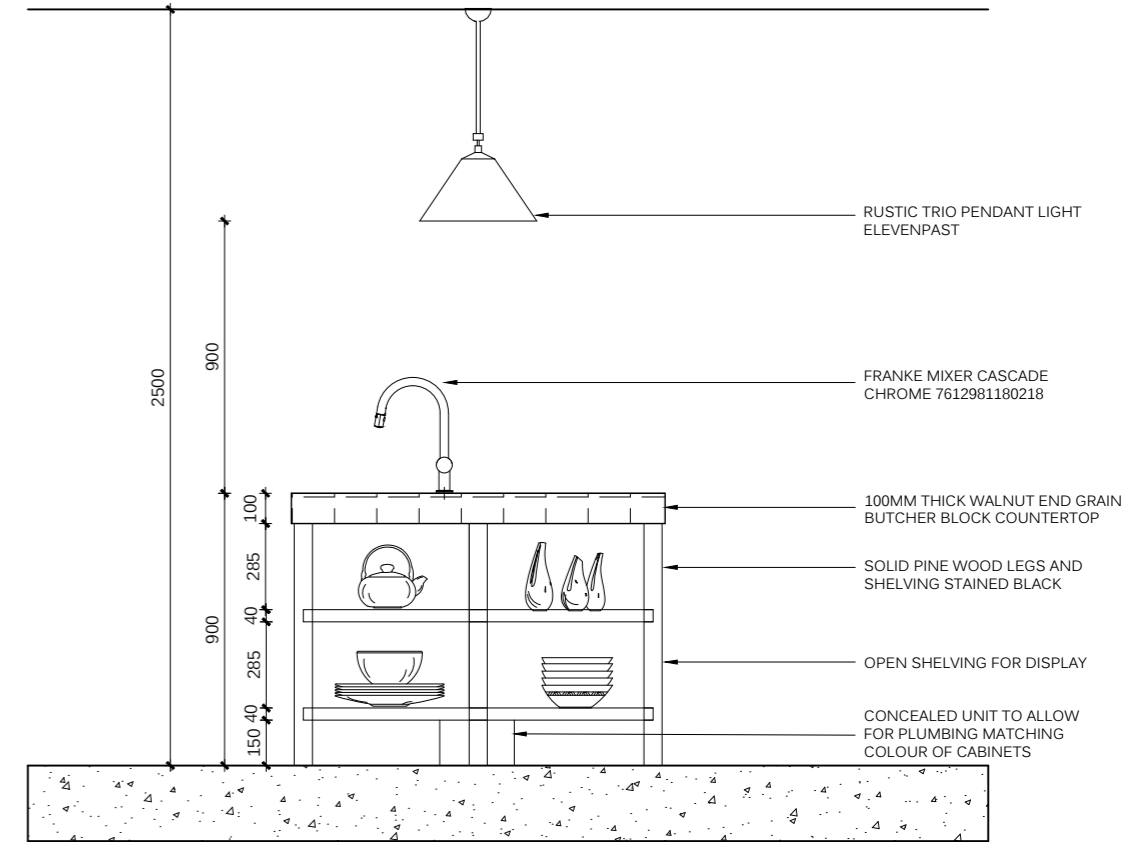
HOUSE BENNETT, KITCHEN SECTION A
SCALE 1:25



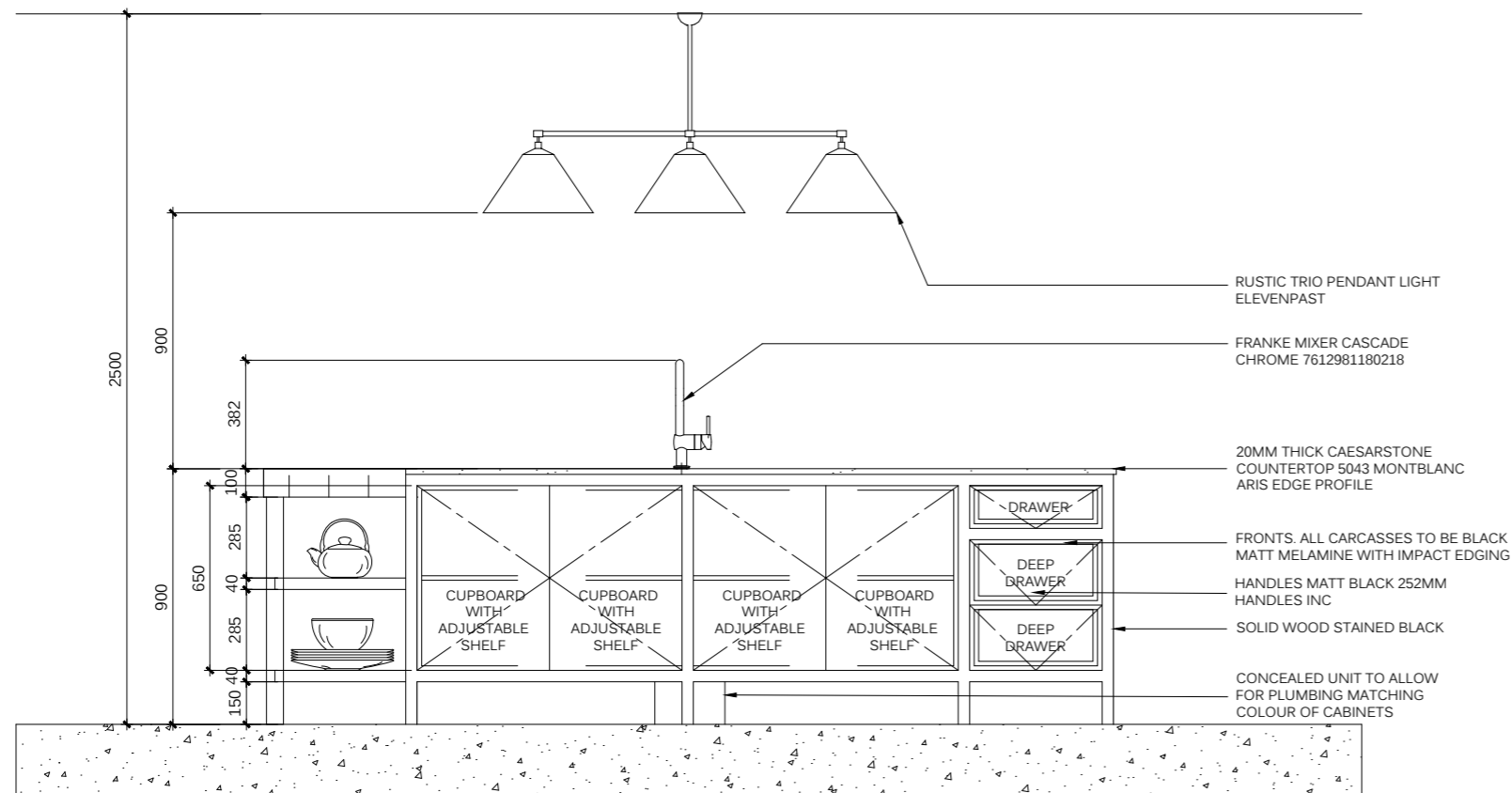
HOUSE BENNETT, KITCHEN ELEVATION A
SCALE 1:25



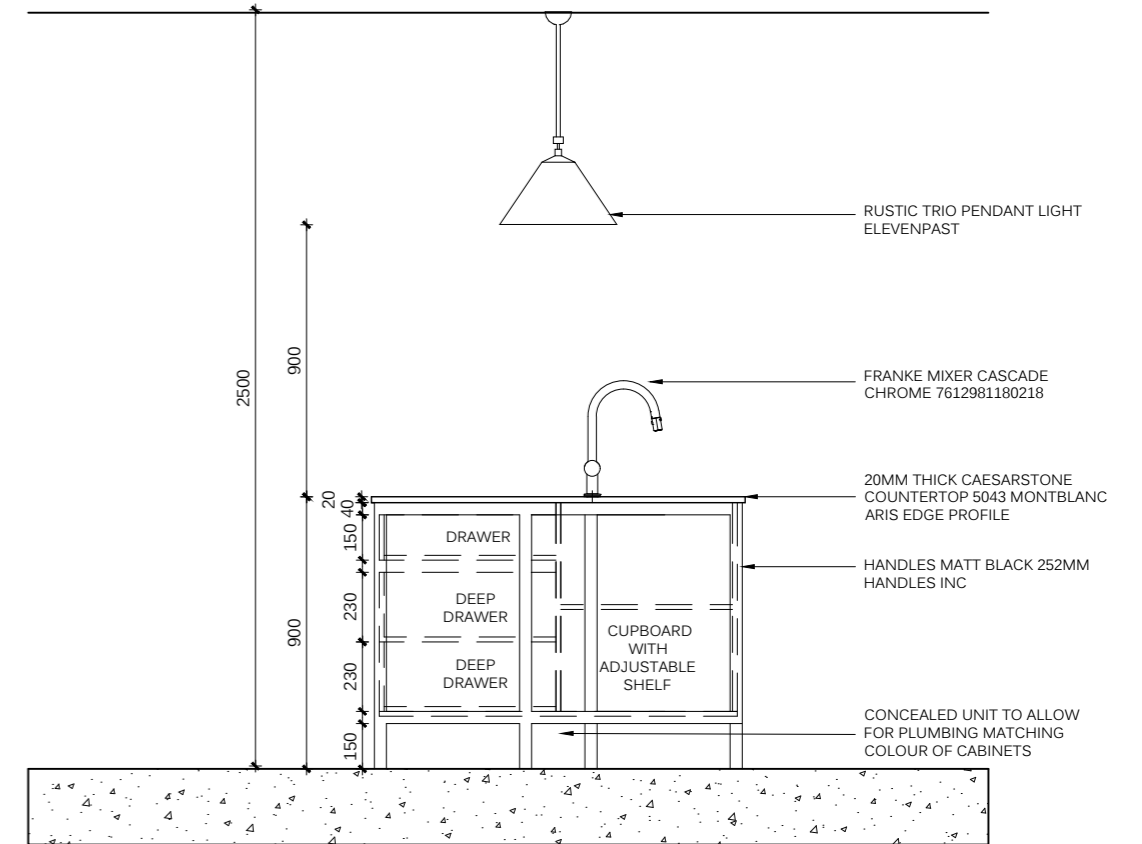
HOUSE BENNETT, ISLAND ELEVATION B
SCALE 1:25



HOUSE BENNETT, ISLAND ELEVATION D
SCALE 1:25



HOUSE BENNETT, ISLAND ELEVATION C
SCALE 1:25



HOUSE BENNETT, ISLAND ELEVATION E
SCALE 1:25

WORKING DRAWINGS

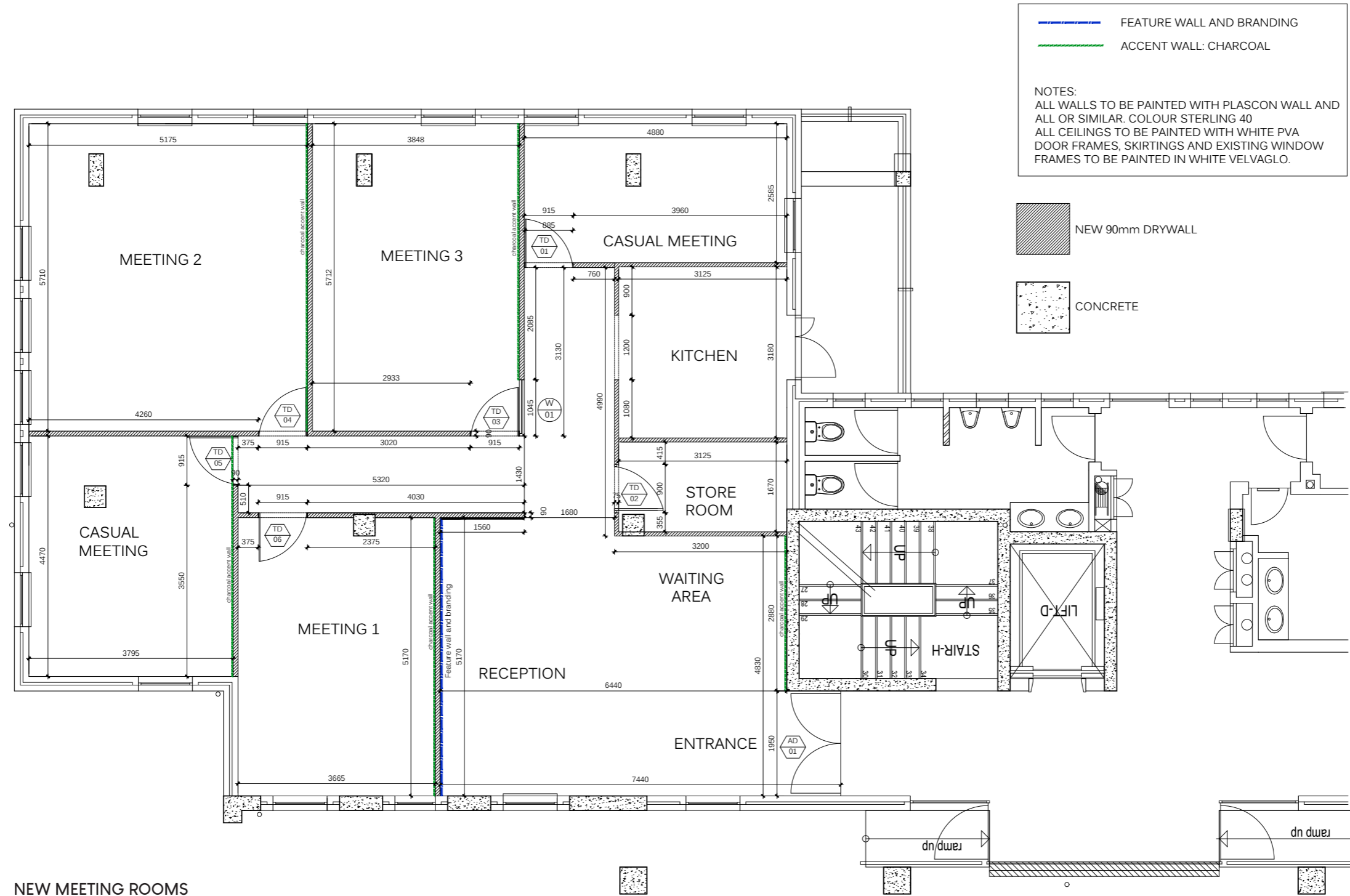
BRIEF: Compile a set of working drawings for the new office space.

To include:

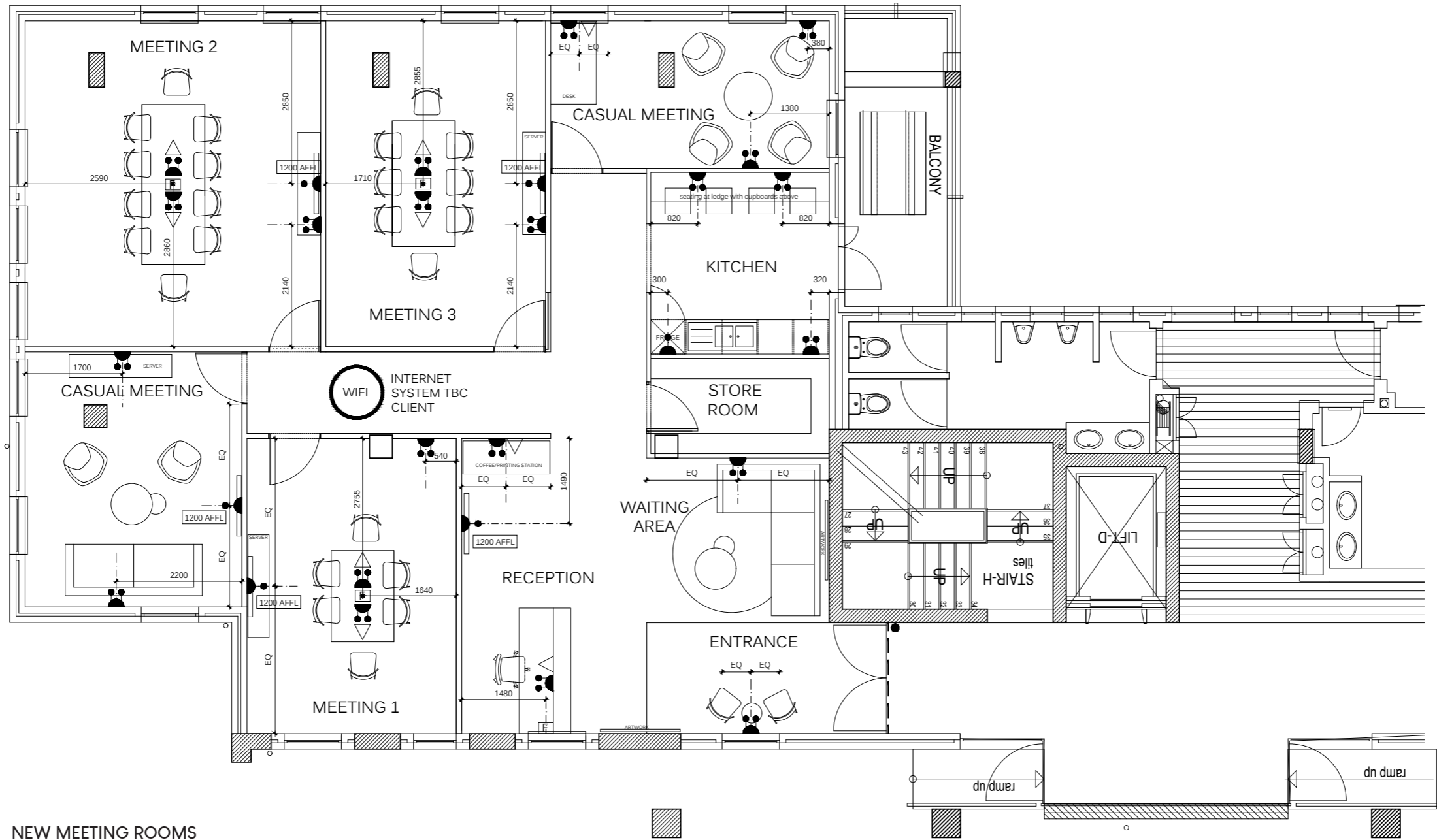
- General Layout
- New Buildwork
- Data & Electrical
- Lighting Layout
- Floor finishes Layout
- Door & Window Schedules



NEW MEETING ROOMS
OPTION 2
NTS



NEW MEETING ROOMS
OPTION 2
NTS



NOTE: ALL PLUGS TO BE 300mm UNLESS OTHERWISE SPECIFIED

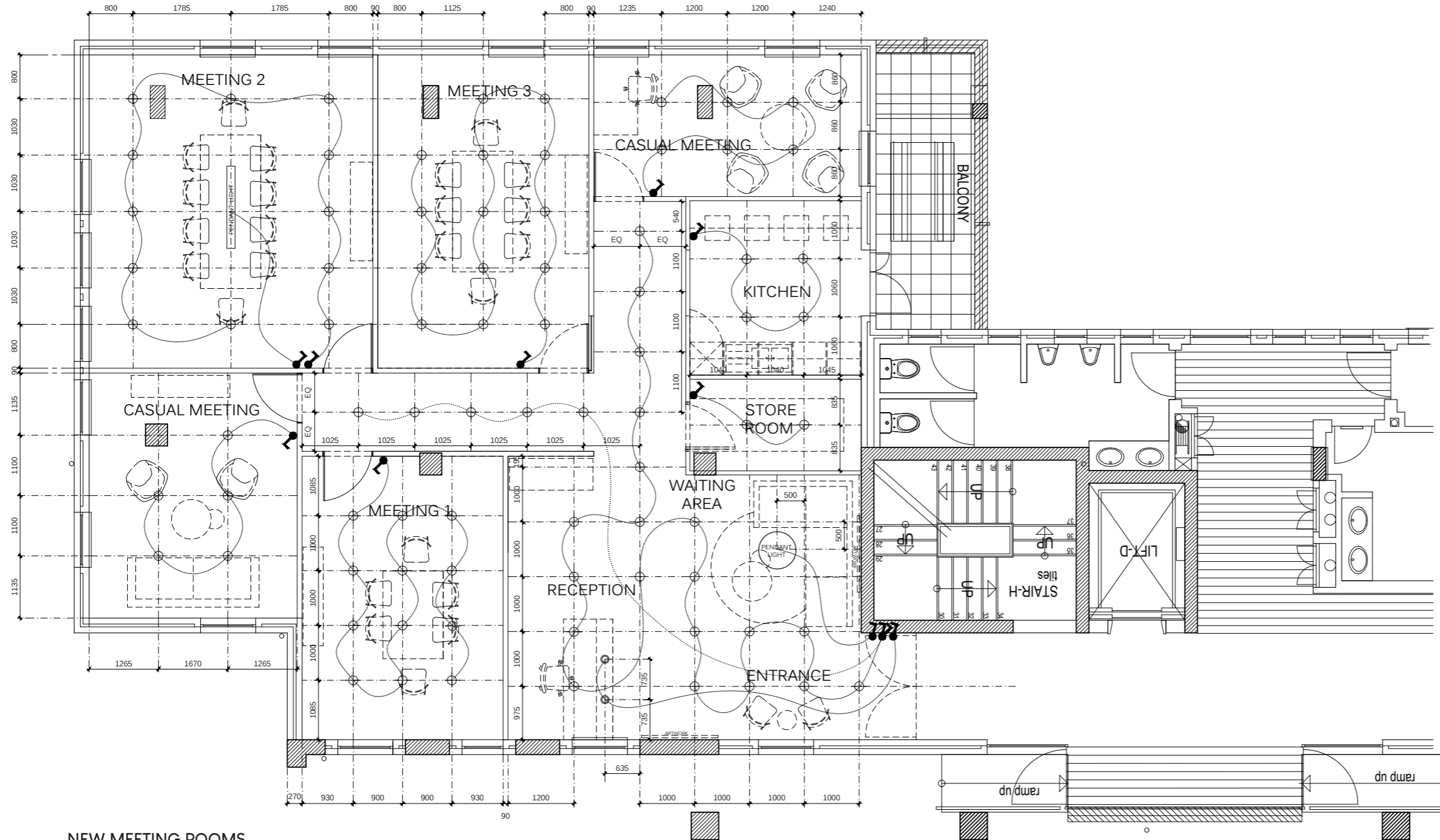
ELECTRICAL OUTLET LEGEND:

	16A Due Switched Socket
	16A Single Switched Socket
	Bell at front entrance with motion sensor
	100mm x 100mm Floor box as per spec
	Data Point

INTERNET SYSTEM TBC BY CLIENT

NOTE: CLIENT TO CONFIRM WHAT TELEPHONE SYSTEM THEY WILL BE USING IN ORDER TO CONFIRM DATA POINTS/WIRELESS SYSTEM

NEW MEETING ROOMS
OPTION 2
NTS

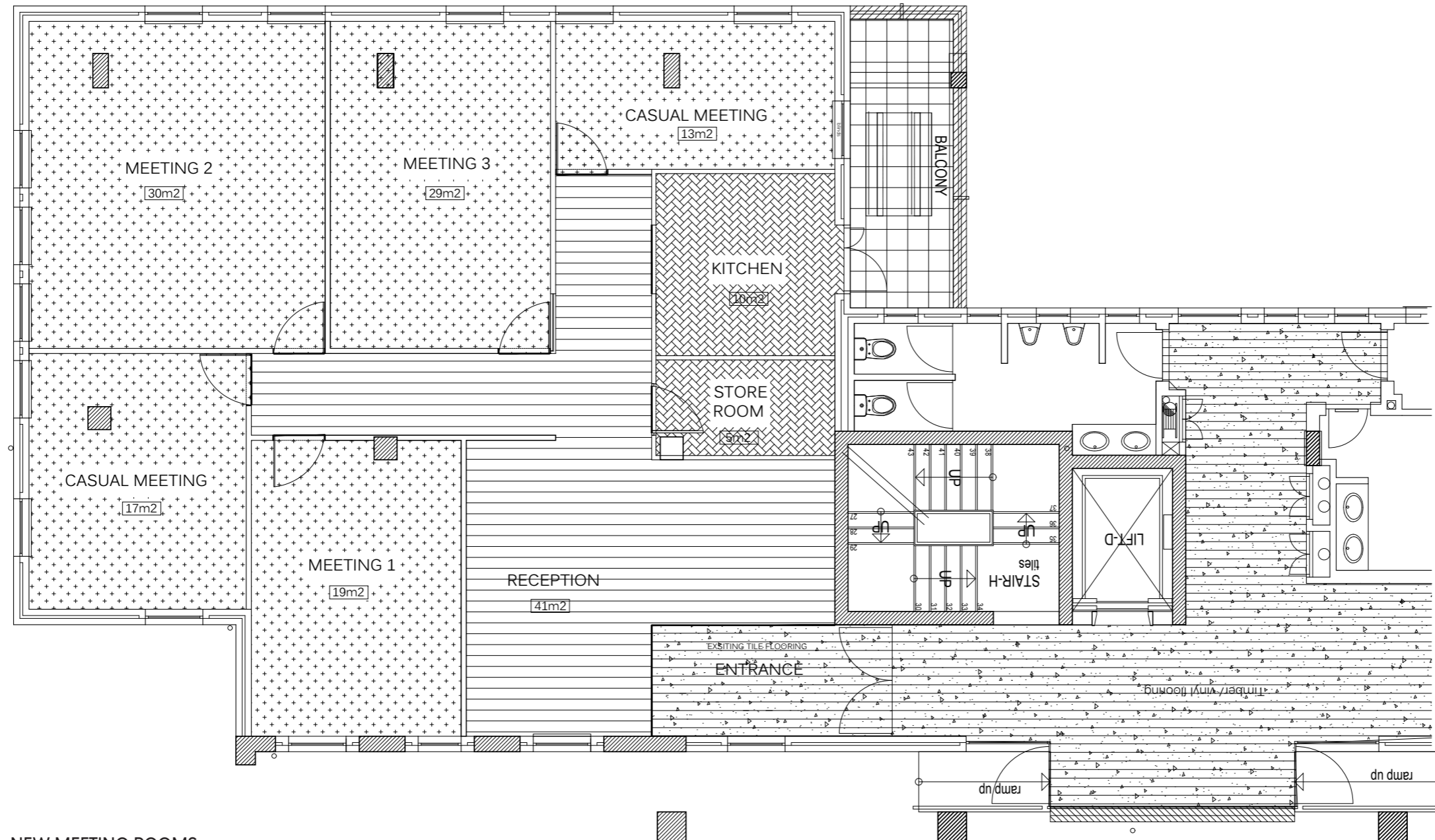


NEW MEETING ROOMS
OPTION 2
NTS



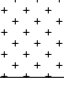
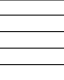
LIGHTING LEGEND:

	LED White down lights with warm light . EAGLE LIGHTING #259A4G
	2 Way Switch Spec: VETI 3 LIGHT SWITCHES SA WHITE
	Switch Spec: VETI 3 LIGHT SWITCHES SA WHITE
	PENDANT LIGHT LUMINANCE Tube light Eleven Past
	PENDANT LIGHT Kiro pendant [white] Eleven Past
	PENDANT LIGHT LARGE Woven pendant light Elevenpast

NOTE : FINAL POSITION OF PENDANT LIGHTS TO BE DETERMINED ON SITE

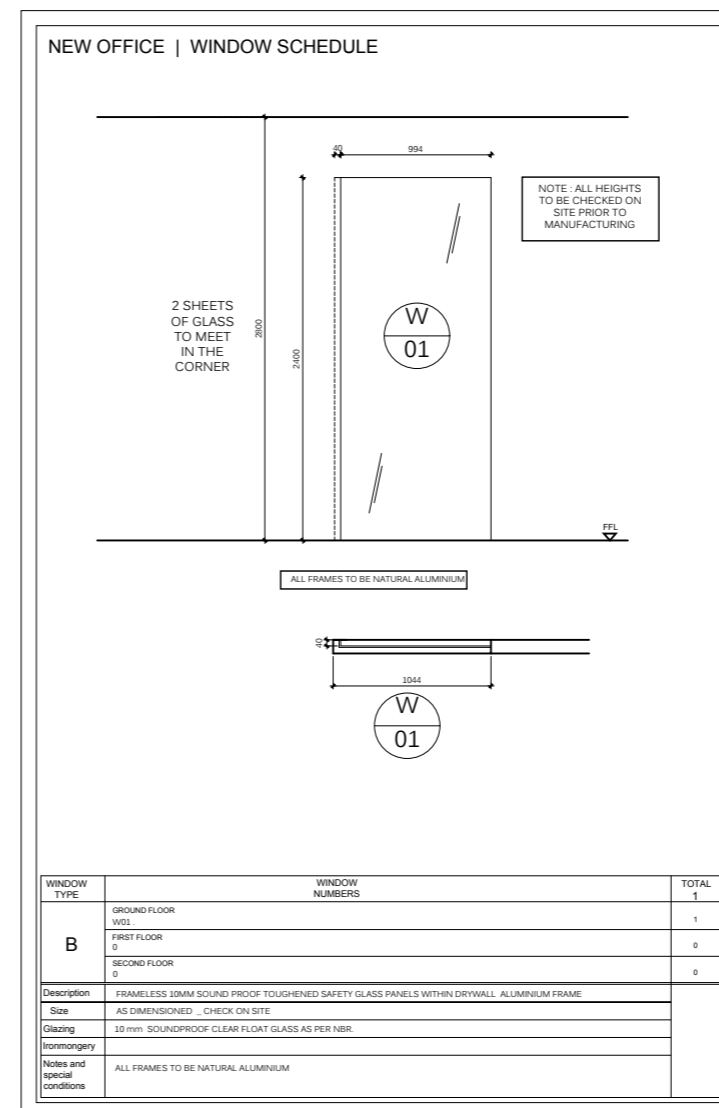
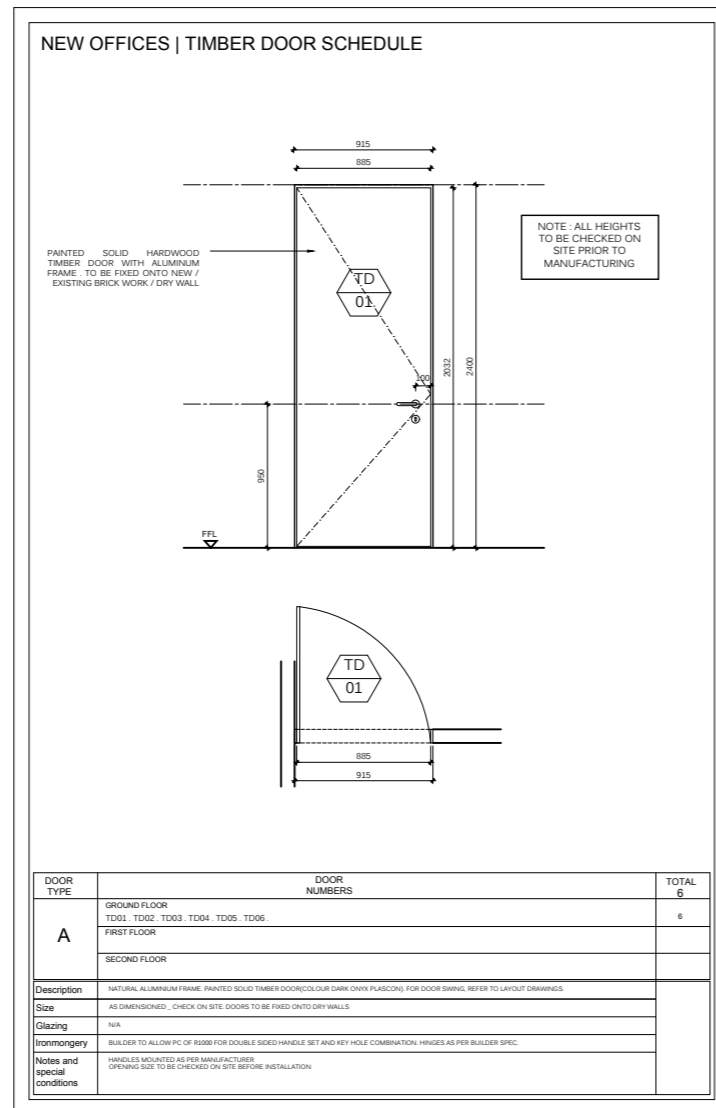


NEW MEETING ROOMS
OPTION 2
NTS

-  ALUMINIUM EDGE TRIM
STRAIGHT GRIP NATURAL
MTRIM
-  ITALTILE HERRINGBONE TILE
#687994
COLOURS WHITE
TOTAL 15m2
-  BELGOTEX MOD DESIGN
ENTERPRISE CARPET TILE.
COLOURS TBC
TOTAL 108m2
-  VINYL FLOORING. BELGOTEX
DAVENPORT. COLOUR TBC
TOTAL 41m2

150mm x 16mm painted hardwood skirting with
5mm x 5mm cutout 50mm from the top

NOTE : NEW SKIRTINGS TO ALL WALLS
WHERE THERE IS NO POWER SKIRTINGS.
STAINLESS STEEL EDGE TRIMS BETWEEN
FLOOR FINISHES WHERE REQUIRED .





the end.