



ALZANE' WAGENAAR

"I DON'T THINK OUTSIDE OF THE BOX; I THINK WHAT CAN I DO WITH THE BOX"

INTERIOR DESIGN PORTFOLIO | 2023

DESIGN TIME SCHOOL OF INTERIOR AND ARCHITECTURAL DESIGN

CONTENTS PAGE



01



CAESARSTONE

02



BOXWOOD PROPERTY FUND

03



BOXED | APARTMENT LIVING

04



FERNWOOD

05



PG BISON

06



BARNET FAIR

07



ON Q APARTMENT

08



MULOO DESIGNS

09



STAY UNIQUE CABIN

10



VINTAGE WITH LOVE

11



WESTLAKE GOLF COURSE

12



PRODUCT DESIGN



BRIEF

DESIGNERS ARE INVITED BY CAPE TOWN 2040 AND OUR FUTURE CITIES TO CREATE A CONCEPTUAL AND FUNCTIONAL DESIGN FOR A SPORTS CENTER LOCATED IN NATES PARK. THE SPORTS CENTER WILL FUNCTION AS A CLUBHOUSE FOR ALL CURRENT AND UPCOMING URBAN SPORTS FACILITIES IN THE PARK. THE BUILDING SHOULD BE A SUSTAINABLE, INCLUSIVE LEGACY FOR FUTURE GENERATIONS.

CONCEPT

I DREW INSPIRATION FROM THE KING PROTEA. THE FLOWER SYMBOLIZES DIVERSITY, CHANGE AND COURAGE. THE STRUCTURE IS SHAPED LIKE THE KING PROTEA, WITH THE CENTER BEING A GLASS DOME LIKE STRUCTURE WITH SOLAR FILM, THIS HELPS REDUCE 78% OF THE SUNS HEAT. THIS HIGH-RISE STRUCTURE IS A SHOW STOPPING CONVERSATION STARTER.



SPORTCENTRE INSPIRED BY THE KING PROTEA



WELCOME AREA | INTERACTIVE AR STATION | RETAIL



1. KNOLL SAARINEN WOMB CHAIR 2. KARL SPRINGER FREE FROM LOW TABLE 3. POLIFORM LE CLUB ARMCHAIR 4. GRIP ARCHIVES LEMANOOSH



A. INTERACTIVE AUGMENTED REALITY INFORMATION STATION
B. COFFEE SHOP

BRIEF

DESIGN TIME STUDENTS HAVE TO PUT TOGETHER A DESIGN SCOPE FOR THE CITY BLOCK FRONTING STRAND, LOOP, AND BREE STREET. THINK RESIDENTIAL CONVERSION, NEW OFFICES, CAMPUS, HOTEL, HOSTEL ETC - THE WORLD IS YOUR OYSTER.

CONCEPT

ALPHA HOUSE IS A VERSATILE AND DYNAMIC BUILDING WITH A WIDE RANGE OF AMENITIES. A COMBINATION OF CO-WORKING SPACES, COFFEE SHOPS, APARTMENTS & A ROOFTOP BAR/ RESTAURANT CREATES A SENSE OF COMMUNITY & PROVIDES MANY OPPORTUNITIES FOR SOCIALIZING & NETWORKING. THE LOBBY'S CONTEMPORARY DESIGN WITH CLEAN LINES & LIT UP WALL PANELS CREATES A BRIGHT & WELCOMING SPACE. ALPHA HOUSE IS DESIGNED WITH THE GOAL OF CREATING A VIBRANT & DYNAMIC ENVIRONMENT THAT MEETS THE NEEDS OF MANY DIFFERENT TYPES OF PEOPLE.





RECEPTION AND WAITING AREA



RECEPTION AND WAITING AREA



LIFTS GOING UP TO APARTMENTS AND ROOFTOP BAR



APARTMENT | LOUNGE AND DINING

A.



B.



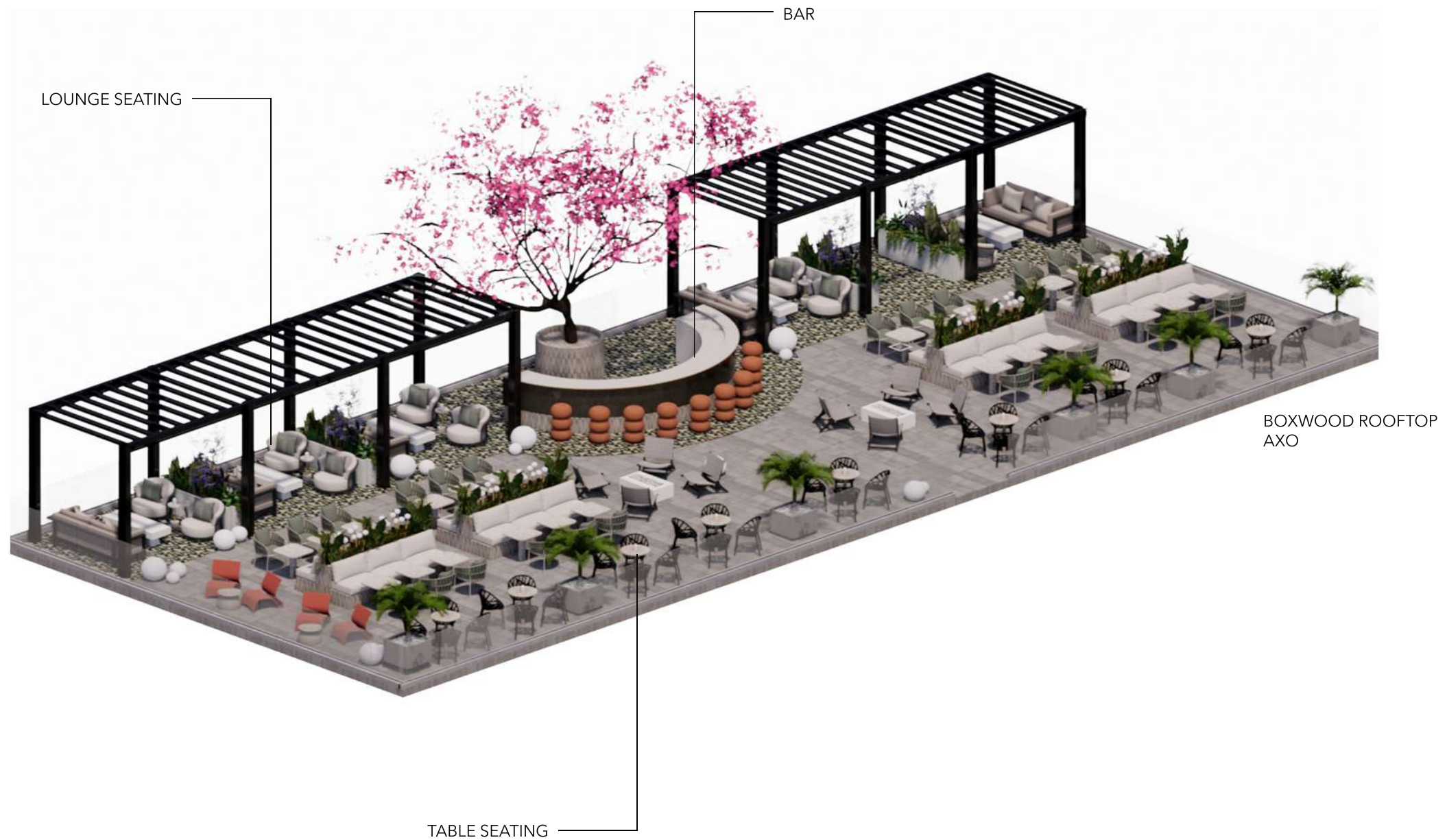
C.



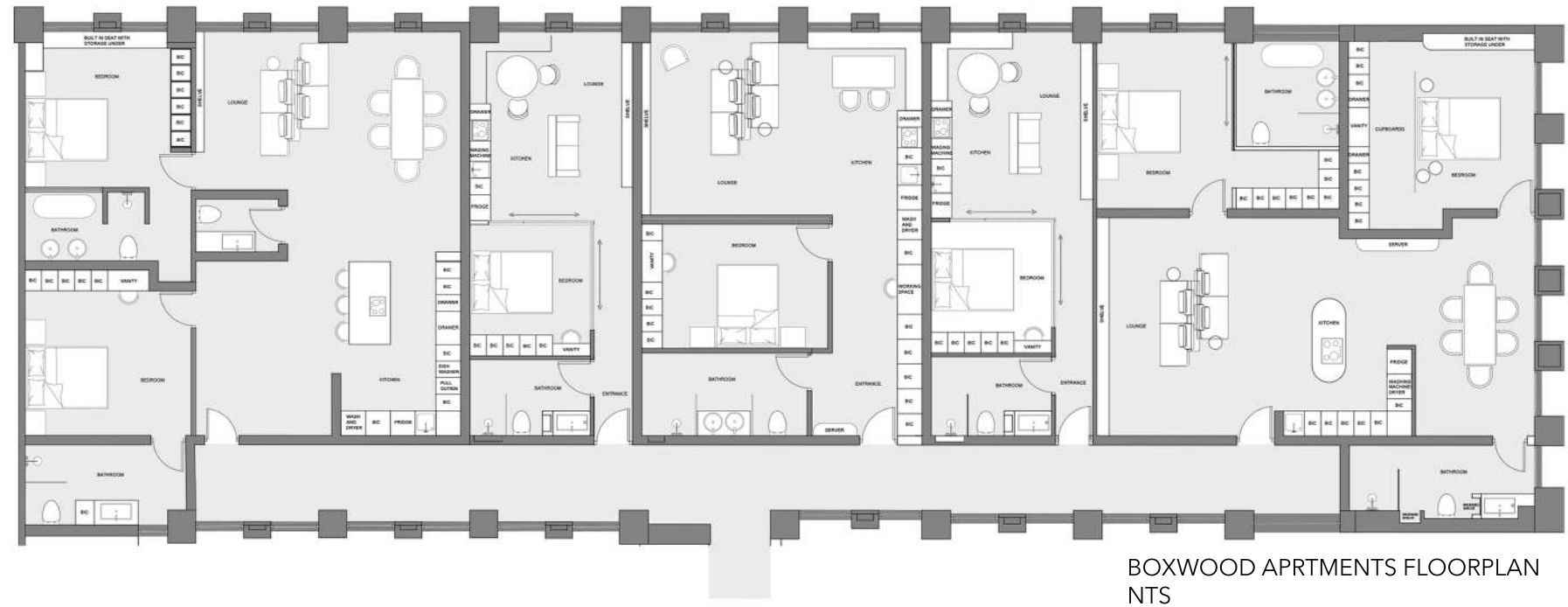
- A. ENTRANCE AND KITCHEN
- B. KITCHEN AND DINING
- C. BEDROOM AND EN SUITE



ROOFTOP BAR | RESTAURANT



ROOFTOP LOUNGE



BOXWOOD APRTMENTS FLOORPLAN
NTS



BOXWOOD MATERIALS
 1. FLOORING, ONA OGGIE | 2. PENDANT BAYA NEST | 3. FLOOR LAMP OKHA | 4. COUNTERTOPS, NEOLITH | 5. NOOM CHAIR | 6. BATHROOM TILE WOMAG | 7. KITCHEN TILE WOMAG | 8. OILED OAK, PG BISON

03.

BOXED APARTMENT

BRIEF

DESIGN AN APARTMENT ACCORDING TO YOUR OWN STYLE IN CAPE TOWN. THE APARTMENT SHOULD BE THREE STORIES WITH A ROOFTOP AREA. THE PROPERTY IS CHARACTERIZED BY IT'S ELONGATED AND NARROW SHAPE, WITH IT'S ENTRANCE LOCATED AT THE SHORTER END FACING THE STREET.

CONCEPT

DESIGNED AS A EXQUISITE BLEND OF DARK AND LIGHT ELEMENTS, THIS APARTMENT SHOWCASES A HARMONIOUS UNION OF NATURAL MATERIALS. LIGHT OAK WOOD, STEEL AND STONE INFUSE AN ORGANIC ESSENCE, WHILE AMPLE NATURAL LIGHT BATHES THE SPACE IN A SERENE AURA. THIS TRANQUIL HAVEN OFFERS RELAXATION AFTER A BUSY DAY AND DOUBLES AS AN INVITING VENUE FOR HOSTING LOVED ONES.





FIRST FLOOR | LOUNGE & DINING WITH SLIDING DOORS OPENING UP TO THE BALCONY



A.



FIRST FLOOR | FLOOR PLAN
NTS



B.

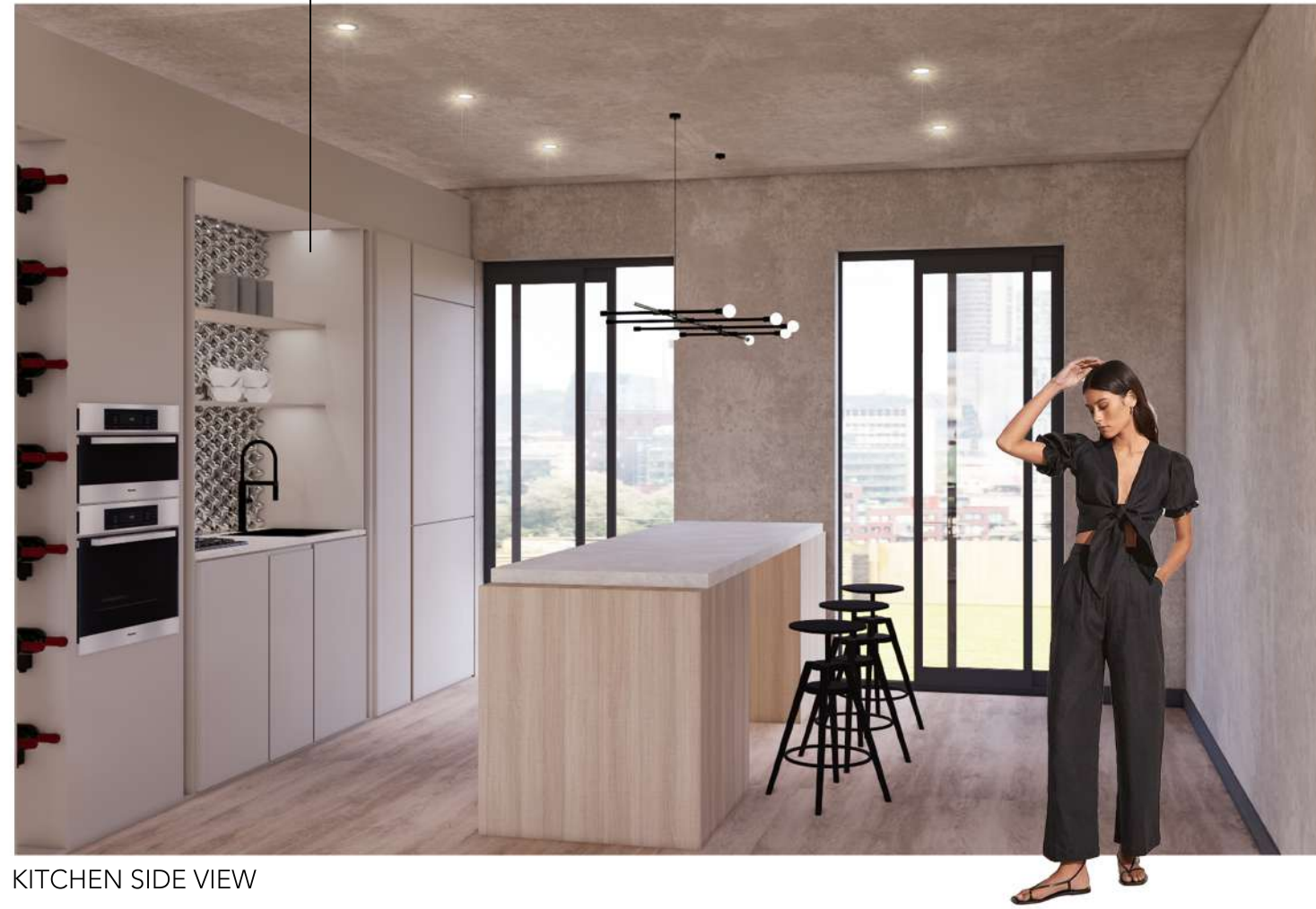
A. DINING AND LOUNGE
B. LOUNGE AND CLOAK ROOM



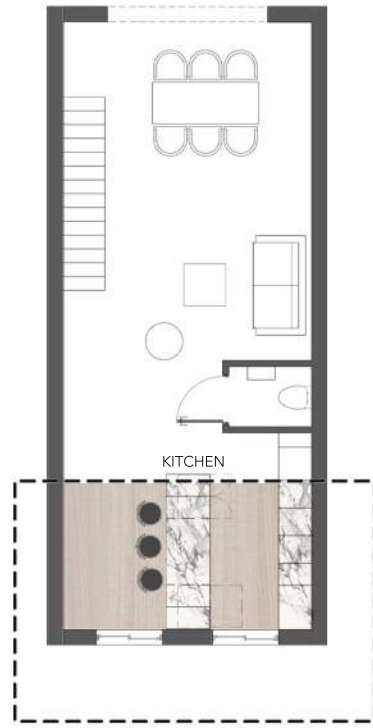
KITCHEN FRONT VIEW



TETRAPOD 3D TILE DETAIL



KITCHEN SIDE VIEW



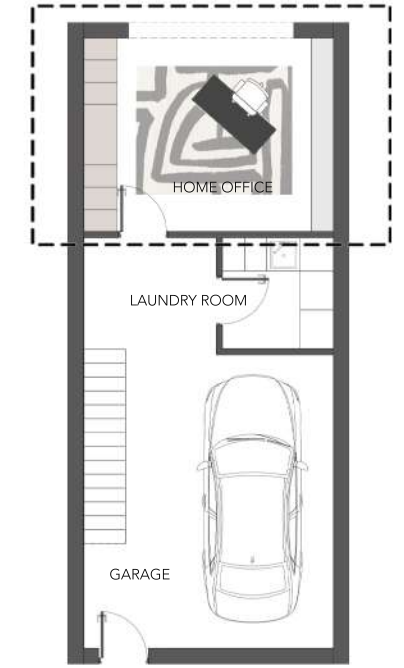
FIRST FLOOR | FLOOR PLAN
NTS



HOME OFFICE WALKING OUT ONTO THE GARDEN



COFFEE STATION



GROUND FLOOR FLOOR PLAN
NTS



BEDROOM VIEW OF OPEN PLAN BATHROOM



READING NOOK



SECOND FLOOR | FLOOR PLAN
NTS



MAIN BEDROOM & BATHROOM



BOXED APARTMENT MATERIALS

1. MELAWOOD SUPAMATT, CONGO, PG BISON, CUPBOARDS | 2. KITCHEN COUNTERTOP, CAESARSTONE, BIANCO DRIFT | 3. BATHROOM TILES, WOMAG, CLOUD | 4. APARTMENT FLOORING, ONA OGGIE | 5. NEOLITH, COLORADO DUNES, BATHROOM COUNTERTOP | 6. PG BISON, TREVISO, CUPBOARDS | 7. STONE WALL CLADDING, GENSTONE | 8. LIMEWASH PAINT | 9. TETRAPOD 3D TILE, MAKHNO, KITCHEN BACKSPLASH | 10. SOFT MATERIAL, HERTEX

04.
FERNWOOD ESTATE

BRIEF

DESIGN A HOUSE IN FERNWOOD ESTATE, KNYSNA. THIS HOME NEEDS TO ACCOMMODATE A FAMILY, BUT FOR AN OLDER COUPLE. KEITH AGED 60 AND KIM AGED 57. THEY HAVE TWO ADULT CHILDREN THAT LIVE OVERSEAS AND THE HOME NEEDS TO ACCOMMODATE THEM AND ANY GUESTS THAT MAY VISIT.

CONCEPT

IN THE QUIET TOWN OF KNYSNA, AT THE TOP OF THE HILL SITS HOUSE GESS. A HOUSE BUILT TO BE A HOME. ELEGANTLY DESIGNED, THE INTERIORS CAREFULLY CURATED TO MAKE YOU FEEL CALM AND AT HOME. FINDING THE PERFECT BALANCE BETWEEN MODERN AND CLASSICAL.



HOUSE GESS IN FERNWOOD ESTATE, KNYSNA



FAMILY LOUNGE OVERLOOKING THE KNYSNA LAGOON





A.



B.

A. KITCHEN
B. DINING



A.



B.

A. FAMILY LOUNGE
B. OUTDOOR DINING



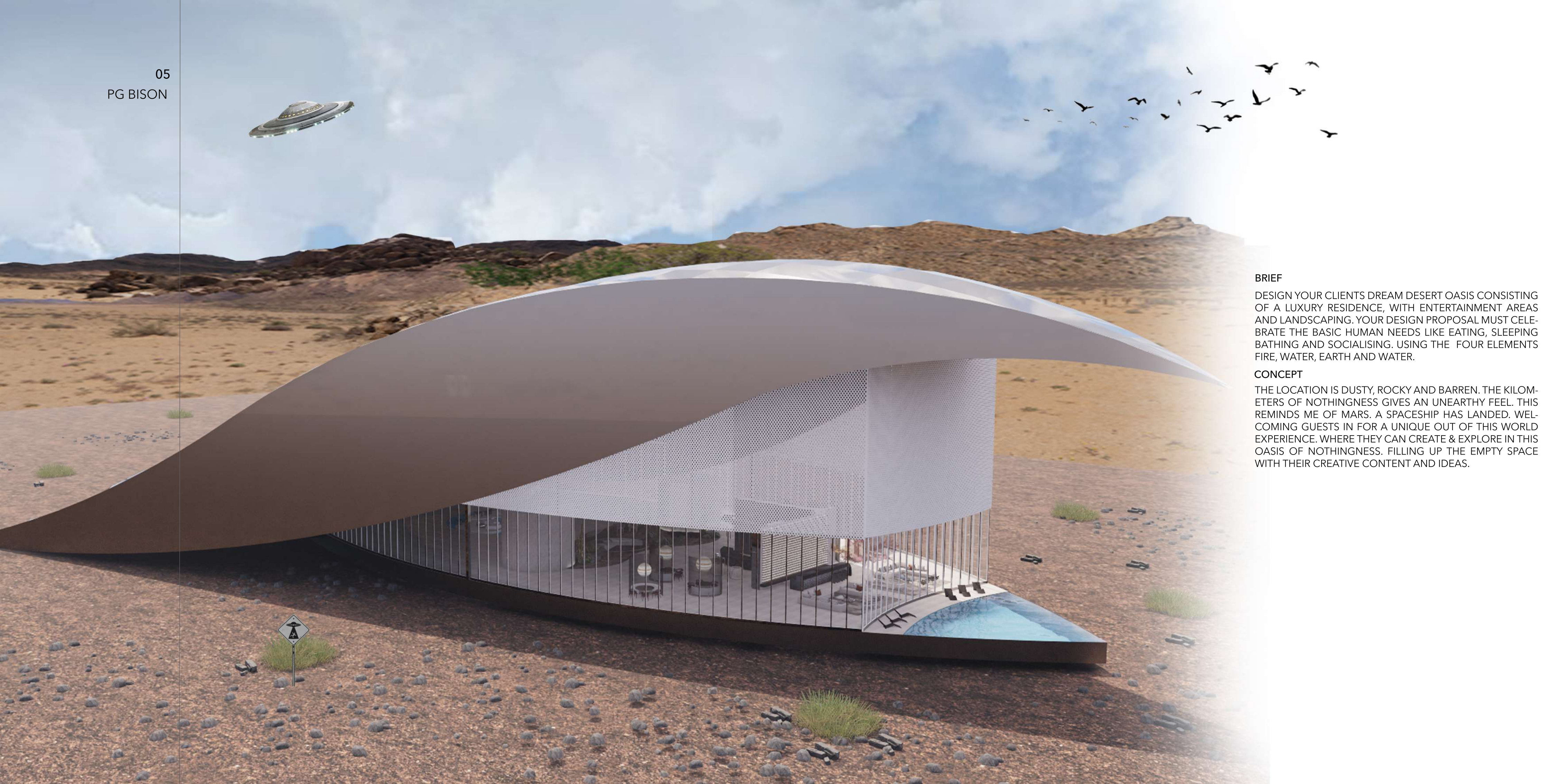
1. KEANE BENCH 2. RH ARMCAHIR 3. CECILY OUTDOOR STOOL



BACKYARD



FERNWOOD FLOORPLAN
NTS



BRIEF

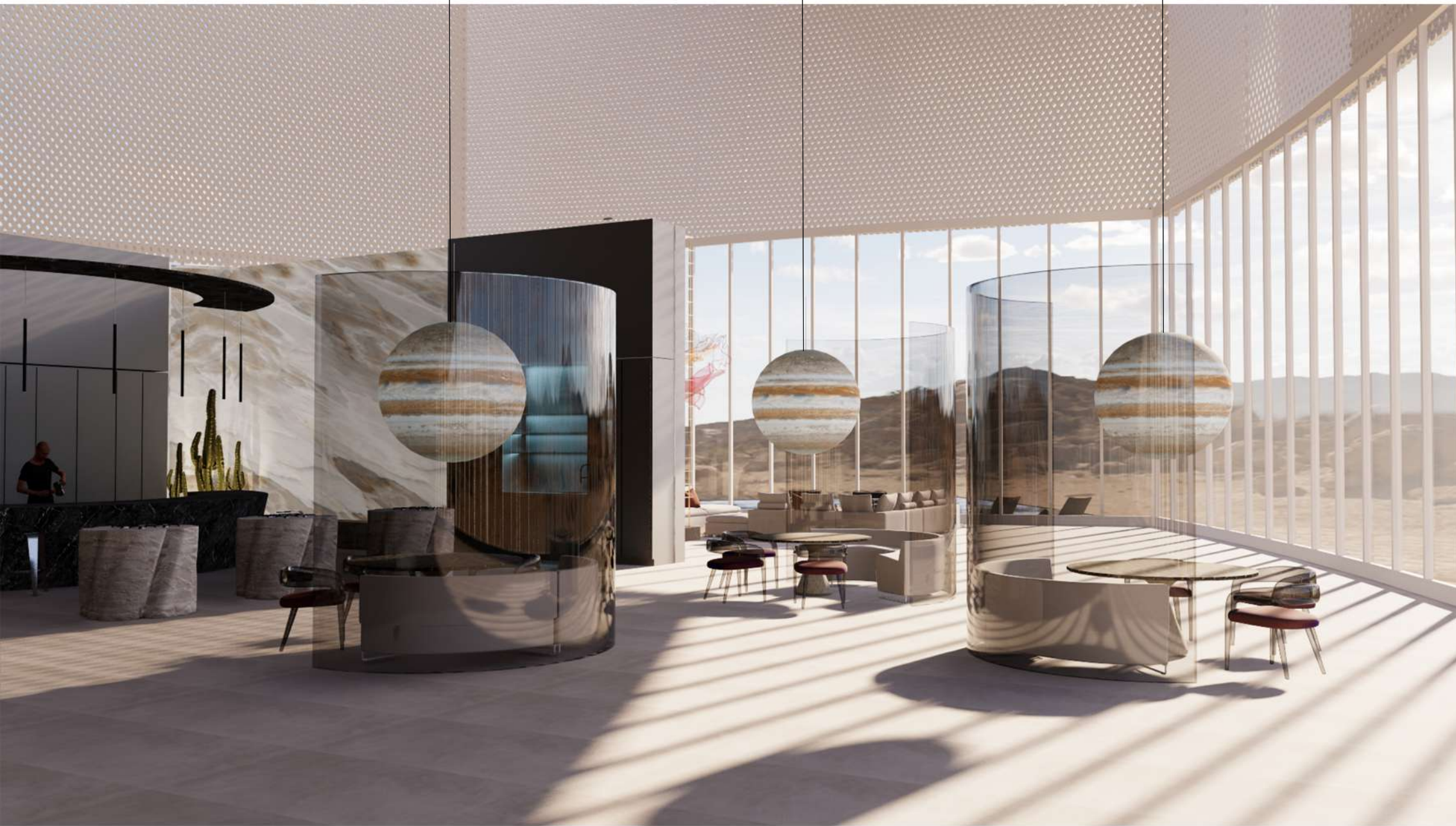
DESIGN YOUR CLIENTS DREAM DESERT OASIS CONSISTING OF A LUXURY RESIDENCE, WITH ENTERTAINMENT AREAS AND LANDSCAPING. YOUR DESIGN PROPOSAL MUST CELEBRATE THE BASIC HUMAN NEEDS LIKE EATING, SLEEPING BATHING AND SOCIALISING. USING THE FOUR ELEMENTS FIRE, WATER, EARTH AND WATER.

CONCEPT

THE LOCATION IS DUSTY, ROCKY AND BARREN. THE KILOMETERS OF NOTHINGNESS GIVES AN UNEARTHY FEEL. THIS REMINDS ME OF MARS. A SPACESHIP HAS LANDED. WELCOMING GUESTS IN FOR A UNIQUE OUT OF THIS WORLD EXPERIENCE. WHERE THEY CAN CREATE & EXPLORE IN THIS OASIS OF NOTHINGNESS. FILLING UP THE EMPTY SPACE WITH THEIR CREATIVE CONTENT AND IDEAS.



RECEPTION AREA | INSTALLATION WAS INSPIRED BY THE SURROUNDING AREA & REPRESENTS THE TUMBLE WEED FROM THE KAROO



DINING EXPERIENCE WITH PLANET PENDANTS



1. ETCETERA CHAIR 2. ZIETA PLOPP STOOL 3. SIDE TABLE VINCENZO DE COTIIS 4. WASSILY LOUNGE CHAIR 5. NOGUCHI TABLE

A.



B.



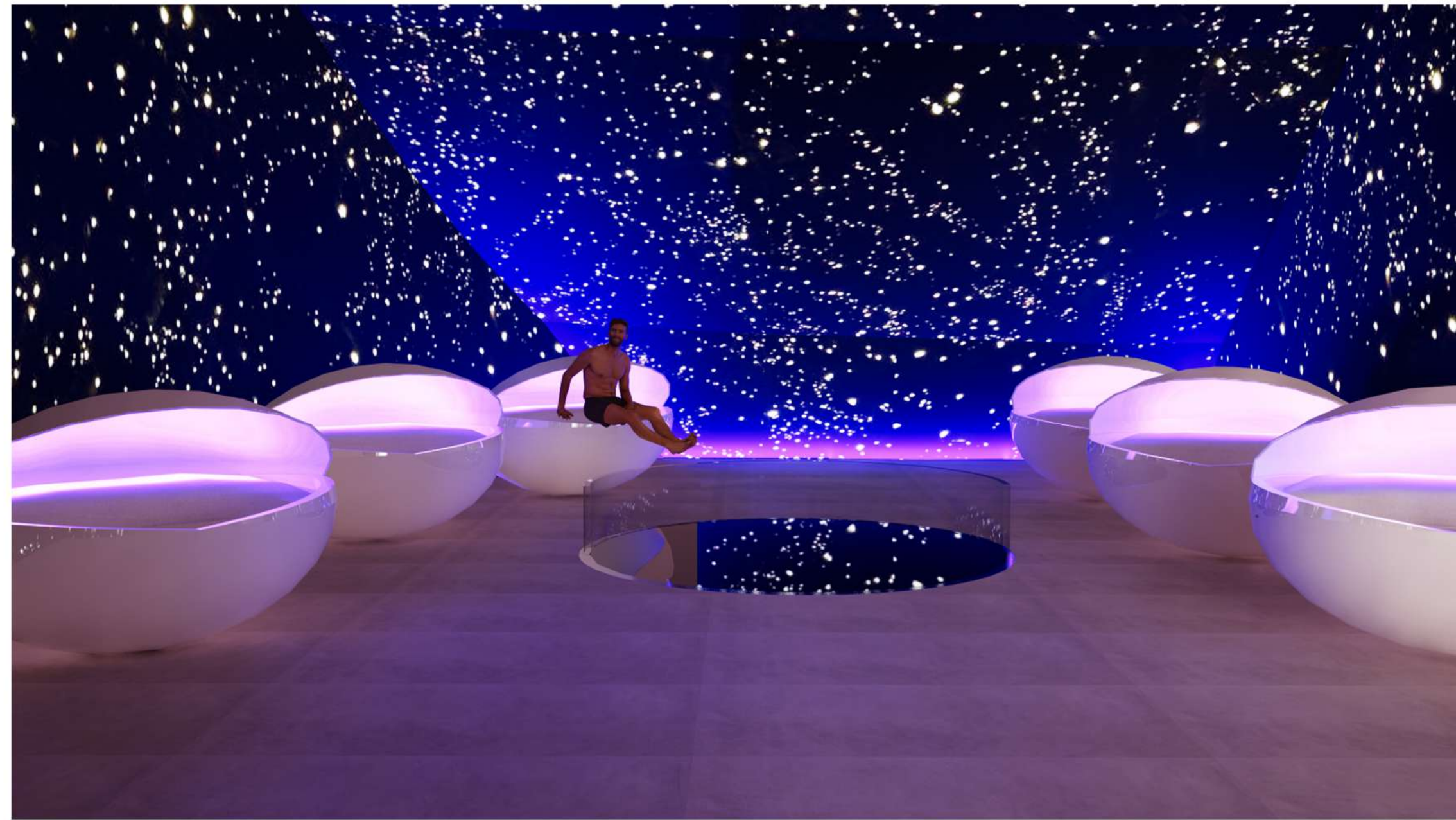
A. INDOOR GARDEN WITH STAIRS LEADING DOWN THE RESET ROOM
 B. FLOATING LOUNGE & RAINDROPS REPRESENTS THE ELEMENT OF WATER | STEEL TREE REPRESENTS THE ELEMENT OF EARTH



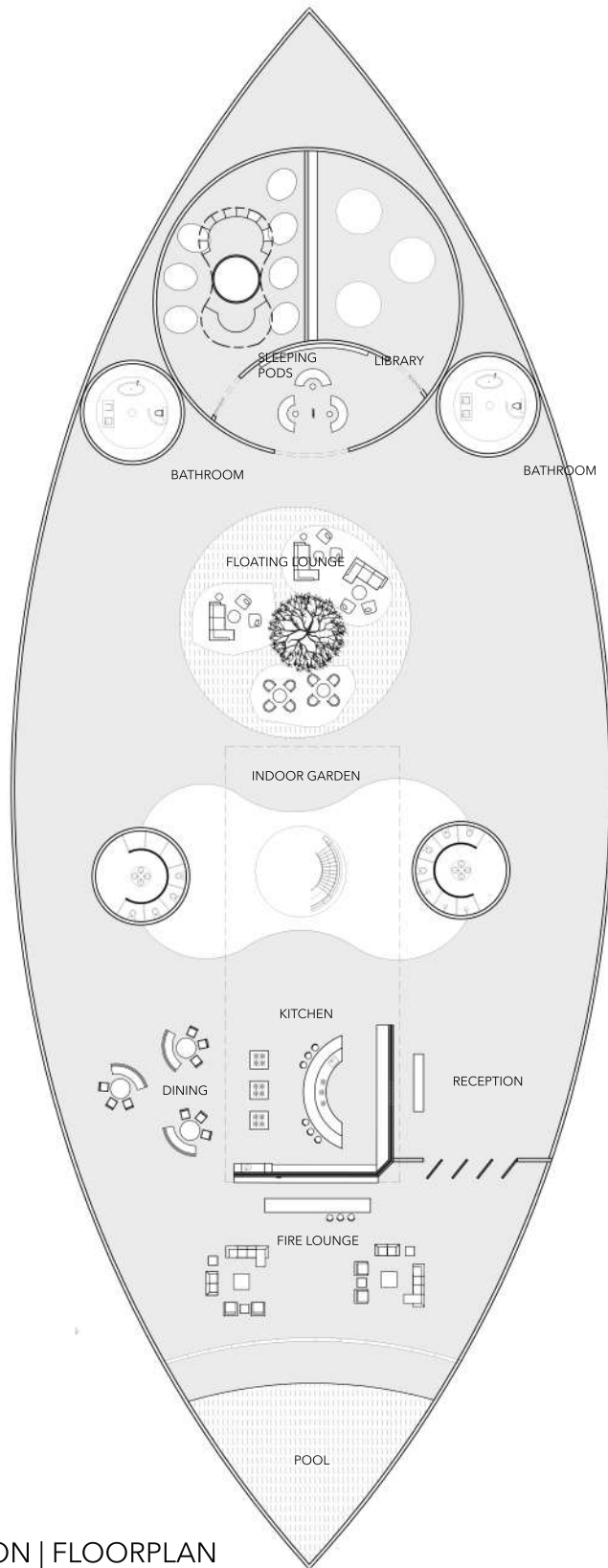
BATHROOM WITH RAIN SHOWER IN THE CENTER



PAJAMA LOUNGE



SLEEPING PODS



PG BISON | FLOORPLAN
NTS

06.
BARNET FAIR

BRIEF

REDESIGN AND REFRESH THE INTERIOR SPACE OF BARNET FAIR BARBERSHOP. THE PRIMARY FUNCTION SHOULD BE PRACTICALLY MOTIVATED, AND GIVE THE BARBERS A GREAT SPACE TO WORK AND CLIENTS A GREAT SPACE TO BE IN.

CONCEPT

LOCATED IN THE HEART OF CAPE TOWN, BARNET FAIR IS A CONTEMPORARY AND EDGY BARBER SHOP THAT HAS BECOME THE GO-TO DESTINATION FOR STYLISH MEN WHO WANT TO STAY AHEAD OF THE GAME.



BARBER SHOP



RECEPTION



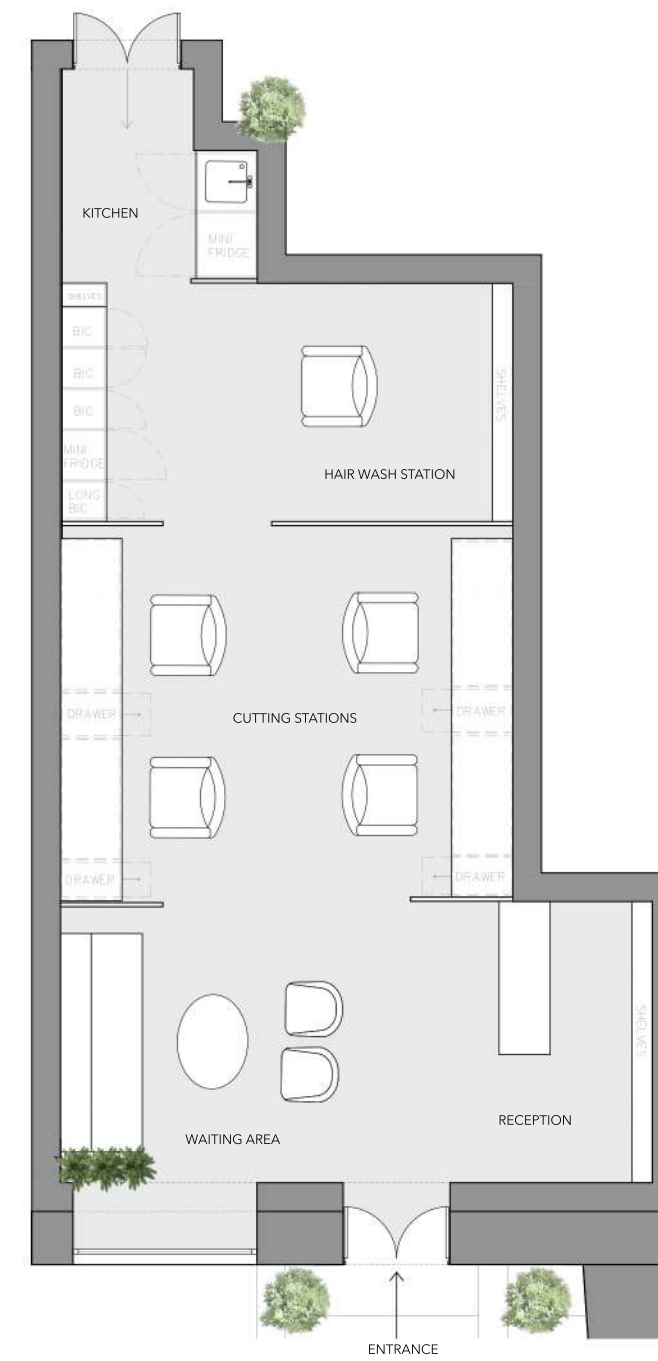
WAITING AREA





BARNET FAIR MATERIALS

1. THE RUG COMPANY 2. PENDANT YANKO DESIGN 3. CUSTOM MADE SOFA 4. WALL SCONE GEDNBO 5. ROLY POLY CHAIR 6. WALLPAPER CARA SAVAN



BARNET FAIR | FLOORPLAN
NTS

BRIEF

CUBE DEVELOPERS ARE LOOKING BEAUTIFULLY DESIGNED AND CURATED SHOW APARTMENTS IN ORDER FOR CLIENTS TO SELECT THEIR CHOSEN MODEL TO PURCHASE. STYLE TO CHOOSE FROM - CLASSICAL, CONTEMPORARY AND MINIMALIST.

CONCEPT

STEP INTO THIS TRANQUIL APARTMENT, AN OASIS OF CALMNESS, LIGHT COLOURS AND NATURAL LIGHT OAK TIMBER MATERIALS CREATING A SOOTHING ATMOSPHERE AFTER A LONG DAY. THE PERFECT PLACE TO UNWIND, RELAX AND REJUVENATE AFTER A LONG DAY.



LOUNGE AND KITCHEN



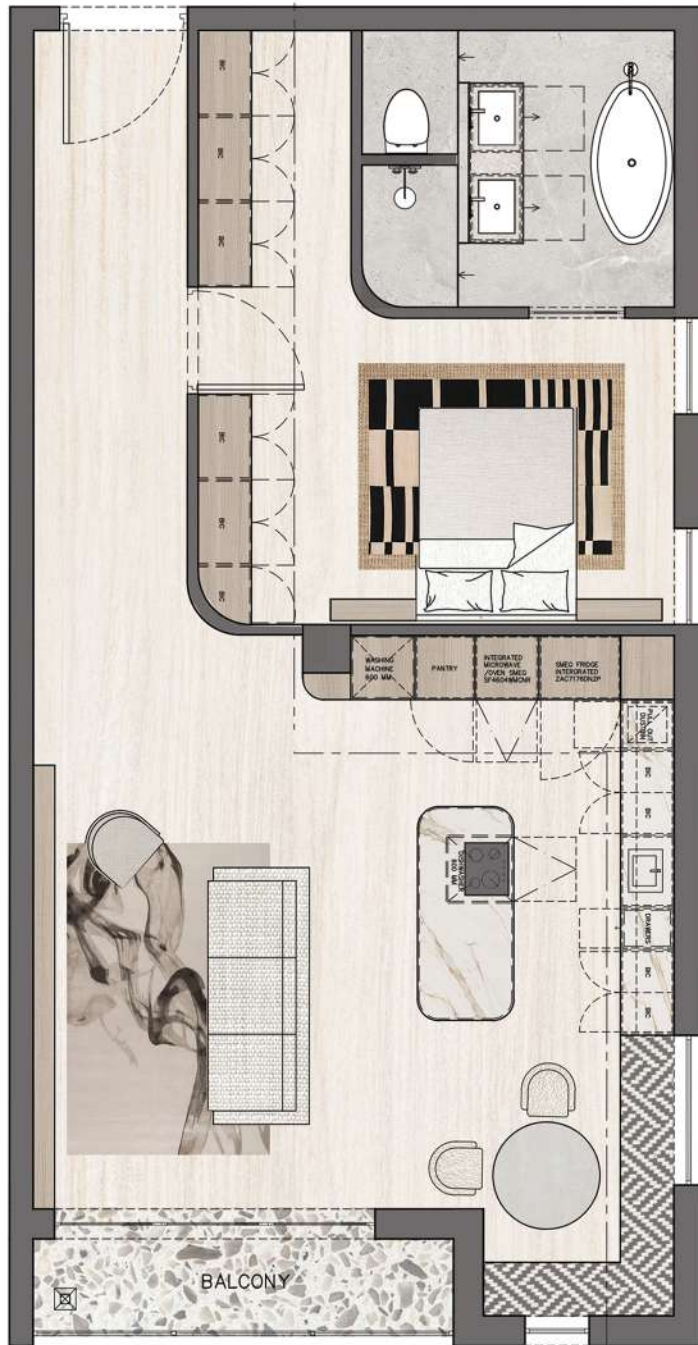
BEDROOM WITH EN SUITE BATHROOM



EN SUITE BATHROOM



1. STOOL 2. HIPPO CHAIR NORR11 3. GEAR TABLE NORR11 4. CARVED STOOL WEYLANDTS



ON Q | FLOORPLAN
NTS

08.
MULOO DESIGNS

BRIEF

DESIGN AN ON TREND RETAIL STORE WITH AN EYE-CATCHING WINDOW DISPLAY THAT WILL DRAW CUSTOMERS INTO YOUR UNIQUE STORE. YOUR DESIGN SHOULD PUSH BOUNDRIES AND BE NOTHING SHORT OF A MEMORABLE EXPERIENCE.

CONCEPT

A CONTEMPORARY BOUTIQUE RETAIL STORE NESTLED IN SOFT, CREAM-COLOURED WALLS. PERFECTLY CURATED A SELECTION OF CLOTHES, GENTLE SOAPS AND LUXURIOUS HAND CREAMS. EMBRACING THE SOOTHING AMBIENCE OF STONE AND BEIGE HUES, YOU WILL FEEL AN INSTANT SENSE OF TRANQUILITY.



MULOO DESIGNS MATERIALS
1. PENDANT STUDIO DAVIDPOMPA | 2. WOMAG TILE | 3. NEO-LITH | 4. OILED OAK PG BISON | 5. NEOLITH



MULOO DESIGNS BOUTIQUE STORE



PAY POINT AND WAITING AREA



FITTING ROOMS AND WAITING AREA



1. HIPPO CHAIR NORR11 2. BELLWEATHER TOOL RH 3. STONE COFFEE TABLE
4. DAVID POMPA PENDANTS 5. COWRIE LOUNGE CHAIR

BRIEF

DESIGN TIME STUDENTS HAVE BEEN GIVEN A UNIQUE OPPORTUNITY TO CREATE A UNIQUE AND INNOVATIVE CABIN DESIGN FOR STAY UNIQUE.

CONCEPT

LOCATION IS LUXURY, THAT IS WHY WE DECIDED TO PLACE OUR CABIN AT THE BREATHTAKING WATERFALL FARM SITUATED IN CITRUSDAL. DRAWING INSPIRATION FROM THE SURROUNDINGS LIKE THE FYNBOS AND THE ROCKY MOUNTAINS WE HAVE DECIDED TO USE A NATURAL COLOUR PALLET AND MATERIALS.



CABIN IN CITRUSDAL AT THE WATERFALL FARM

A.



KITCHEN | READING NOOK WITH STORAGE SPACE UNDERNEATH



1. JUTE RUG FROM ROWLEY AND HUGHES 2. VUTI CHAIR FROM WOOD BENDER 3. KEANE BENCH 4. FIRE PIT RH 5. SANTIAGO GRAY WICKER 6. REYES TEAK LOUNGE CHAIR RH 7. OUTDOOR STOOL CARTE & BARREL



B.

A. BEDROOM OPENING UP TO THE OUTSIDE



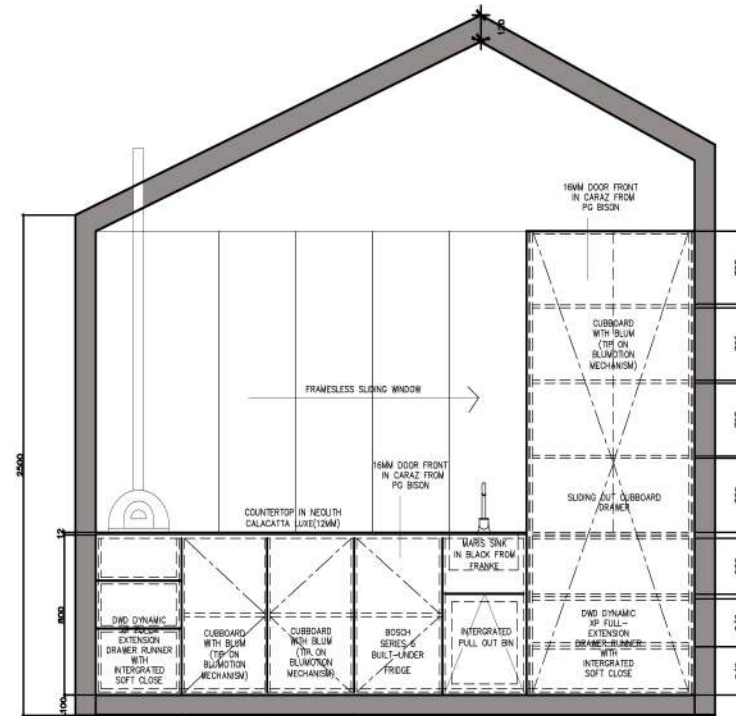
B. BATHROOM WITH DOUBLE SHOWER BEHIND THE WALL



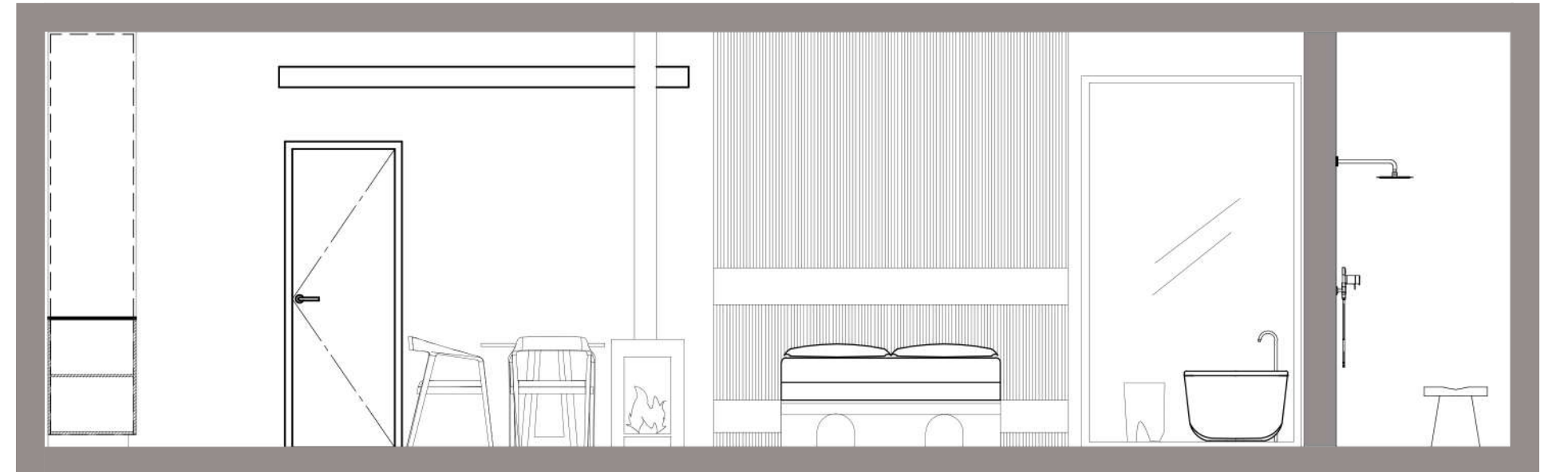
A. OUTDOOR PATIO WITH LOUNGE,
RELAXING NET, TUB AND OUT-
DOOR SHOWER
B. VIEW OF THE SHOWER LOOKING
TO THE OUTSIDE



KITCHEN CUPBOARD DETAIL



KITCHEN DETAIL ELEVATION
NTS



ELEVATION OF CABIN
NTS



STAY UNIQUE MATRIALS

1. PENDENT STUDIO DAVIDPOMPA | 2. FLOORING, ONA BRUSHED OGGIE | 3. BATHROOM WALL, NEOLITH | 4. BATHROOM WALL, MOSO, WOLKBERG | 5. BUILT IN ITEMS, OILED OAK, PG BISON | 6. KITCHEN CUPBOARDS, PG BISON | 7. COLORADO DUNE, NEOLITH, KITCHEN COUNTER | 8. SEATING, HERTEX, NATURAL | 9. SEATING, HERTEX, MIST



**STAY UNIQUE CABIN
FLOORPLAN
NTS**

10.
VINTAGE WITH LOVE



BRIEF

YOU HAVE BEEN APPROACHED BY THE VINTAGE WITH LOVE TEAM AND HAVE BEEN TASKED WITH DESIGNING THEIR NEXT SHOW STOPPING EVENT AT THE CAPE TOWN CRUISE TERMINAL AT THE V&A WATERFRONT.

CONCEPT

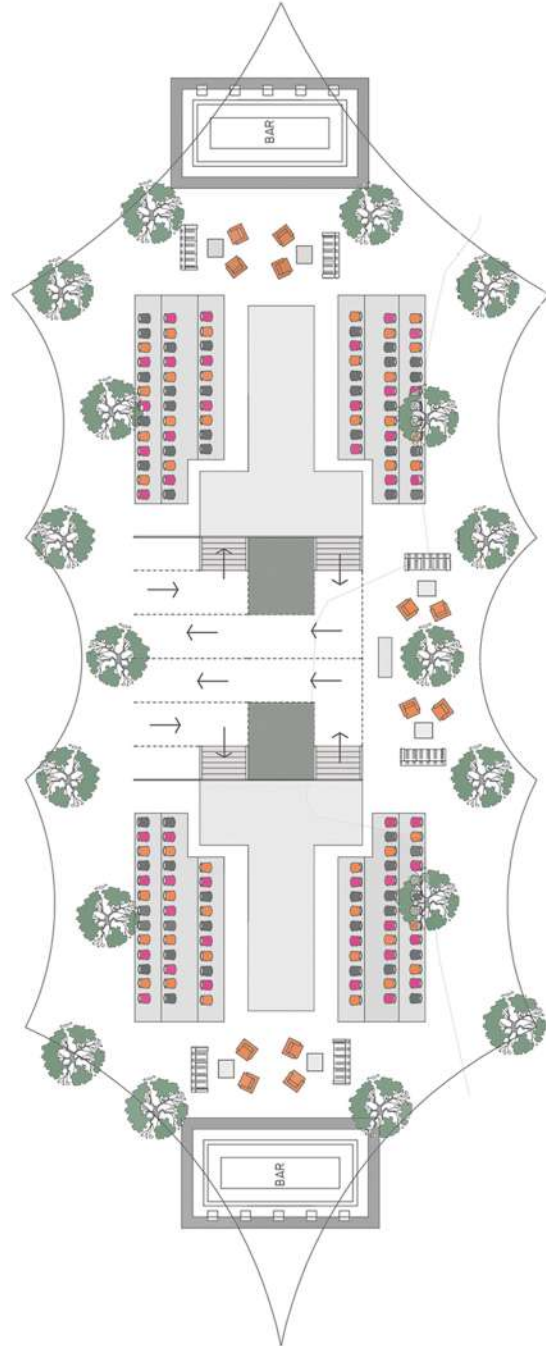
VINTAGE WITH LOVE IS A NON-PROFIT ORGANIZATION THAT SPECIALIZES IN HIGH END SECOND HAND CLOTHING AND ACCESSORIES AT PRICES THAT SUIT EVERYONES PURSE. WE WANTED TO CREATE A SPACE THAT CELEBRATES THE VERY MEANING OF THIS ORGANIZATION WHICH IS LOVE. WE HAVE USED COLOURS THAT EVOKE EMOTION WITH PLAYFUL STRIPES AND DISCO BALLS. A SPACE THAT IS HIGH END AND CELEBRATES THE SHOPPER.



FASHION TENT RUNWAY



SECTION OF FASHION TENT



VINTAGE WITH LOVE | FLOORPLAN
NTS

11.
WESTLAKE GOLF COURSE

BRIEF

LUXURY HOSPITALITY BRAND, AND DEVELOPERS TINTSWALO, HAVE APPOINTED ARCHITECT NEAL SACHS, TO REDESIGN THE EXISTING WESTLAKE GOLF CLUBHOUSE. REIMAGINE, DESIGN AND CURATE THE INTERIOR OF THIS EXCITING, NEW AND REAL SPACE, BRINGING AN ORIGINAL DESIGN AESTHETIC TO THE TABLE.



HALFWAY HOUSE



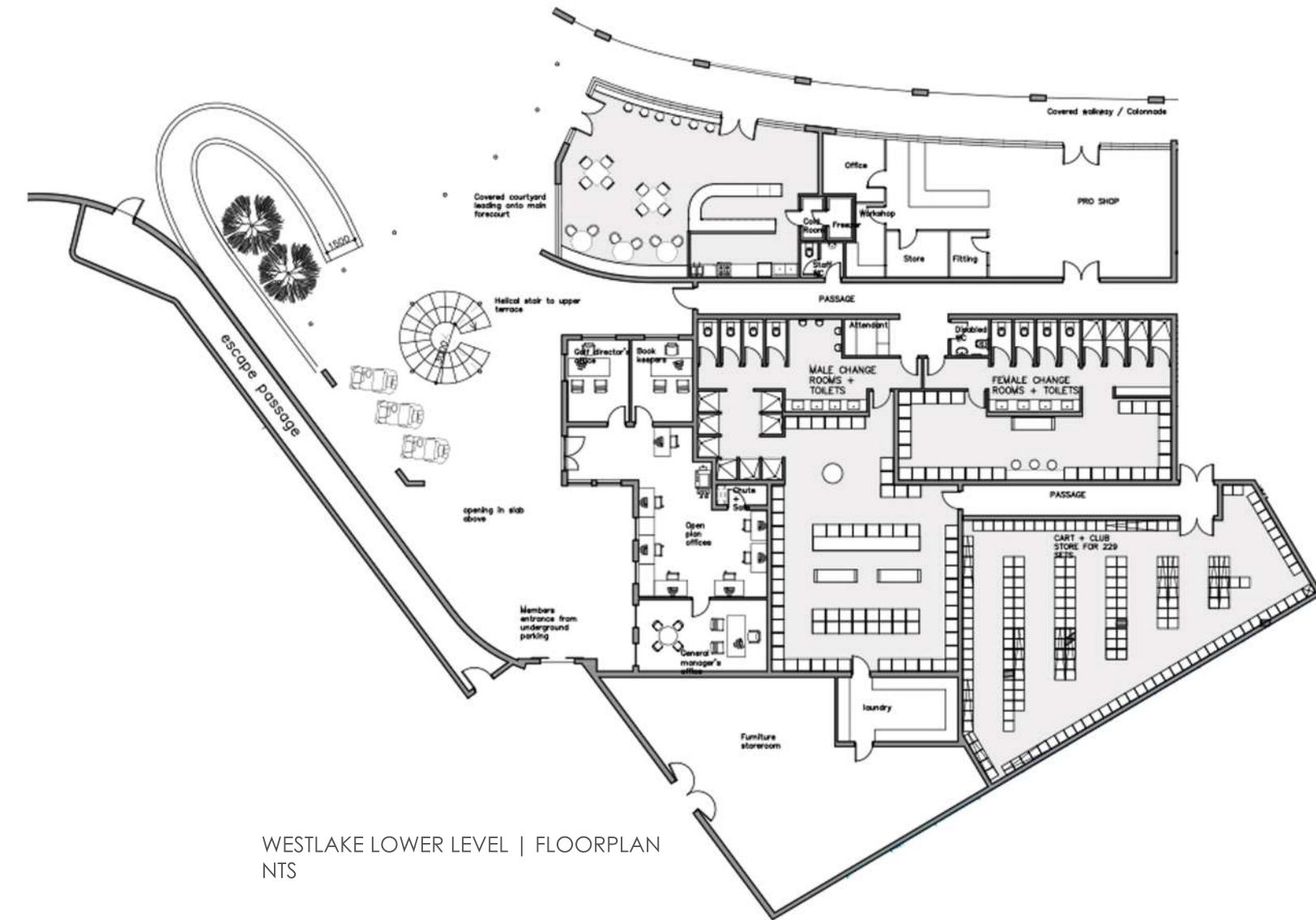
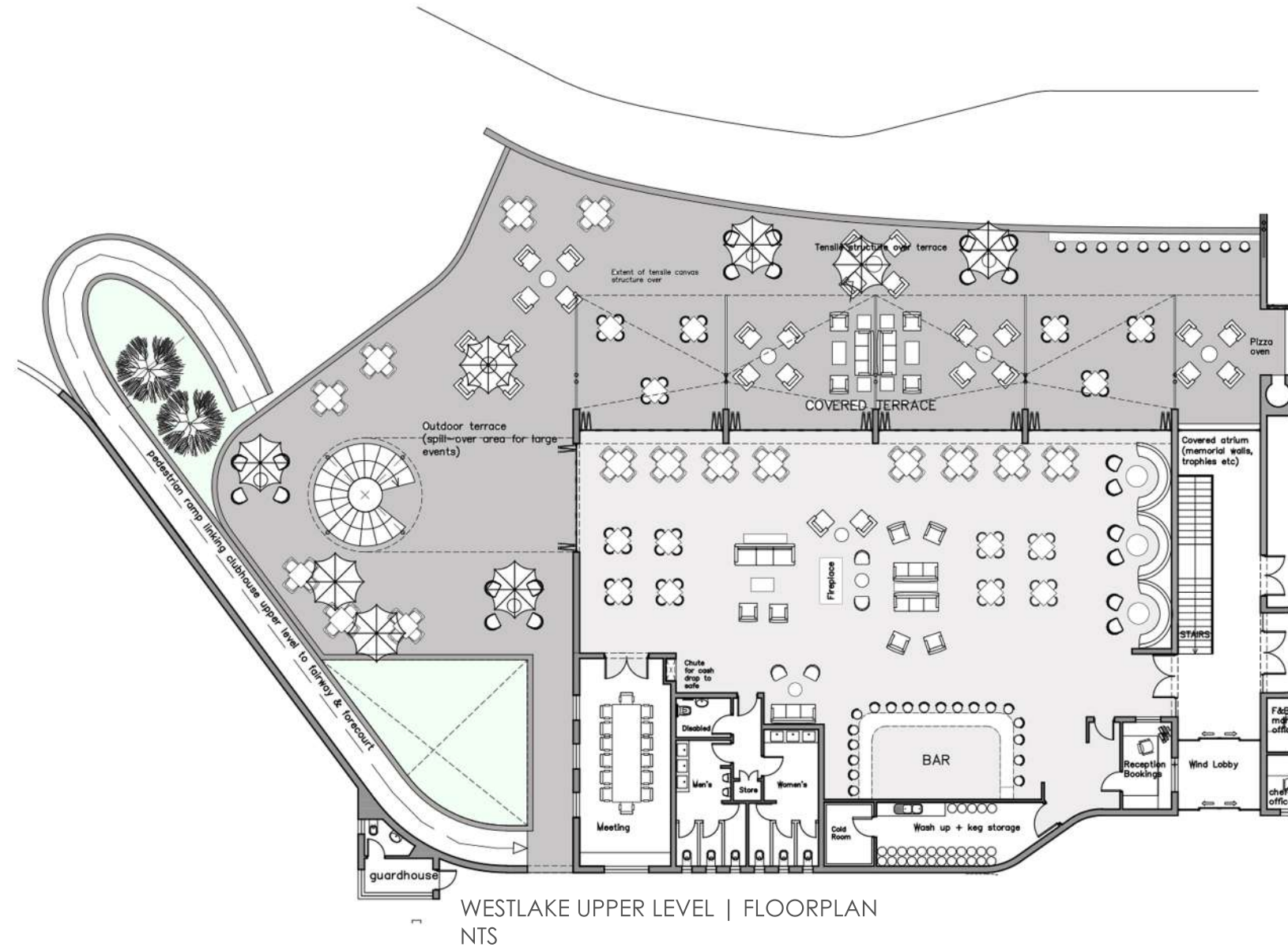
1. RIMBA WEYLANDTS 2. ASHANTI CHAIR WEYLANDS 3. MAUL LOUNGE SET MON 4. TULUM LOUNGER WEYLANDS 5. COFFEE TABLE WEYLANDS 6. ARMCHAIR WEYLANDS 7. HERTEX HAUS



HALFWAY HOUSE



SNACK BAR



BRIEF

DECOREX LOOKS FORWARD TO COLLABORATING WITH INNOVATIVE DESIGNERS WHO ARE COMMITTED TO SUSTAINABLE DESIGN PRINCIPLES AND CREATING FUNCTIONAL AND VISUALLY APPEALING CHAIRS USING WASTE MATERIALS.

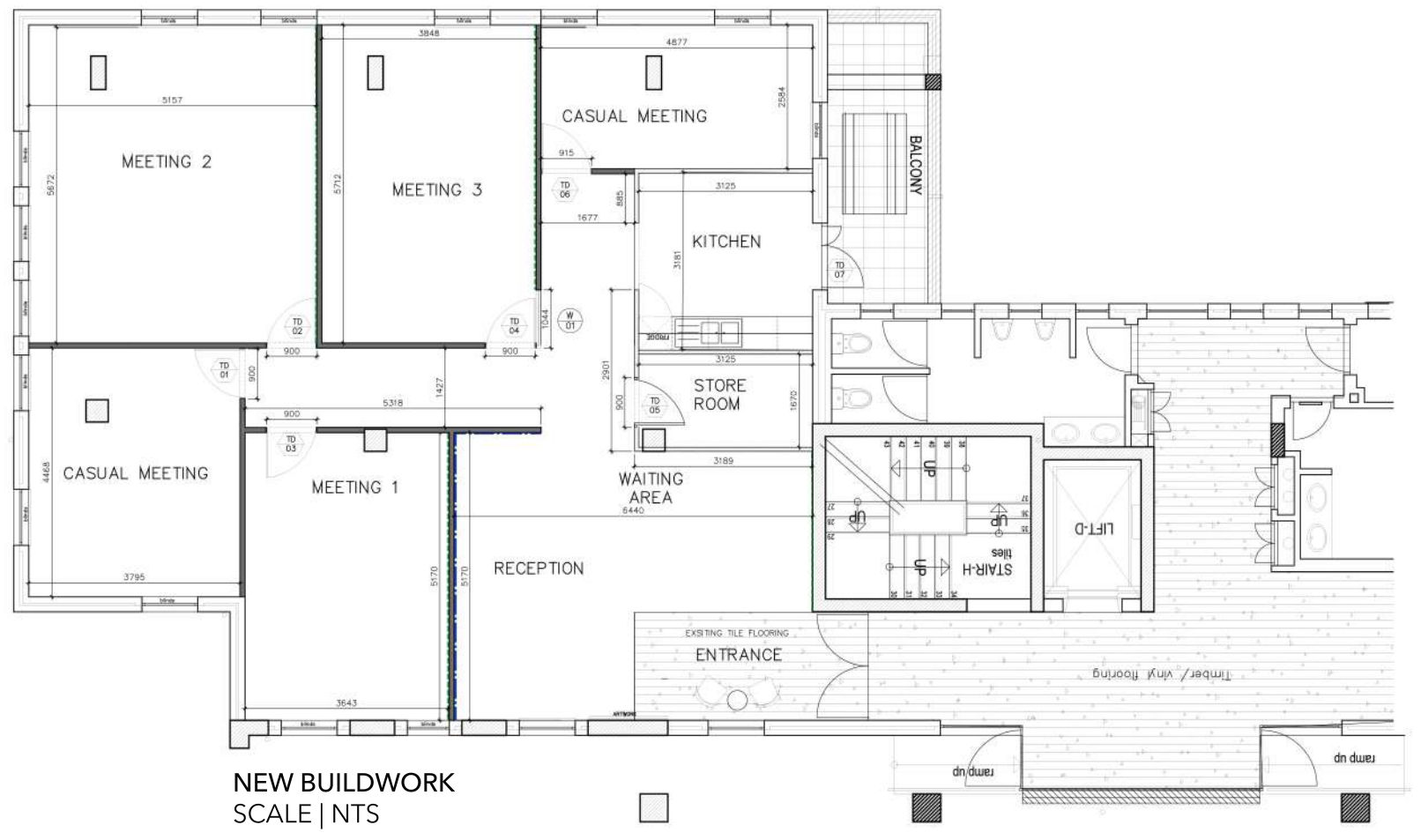
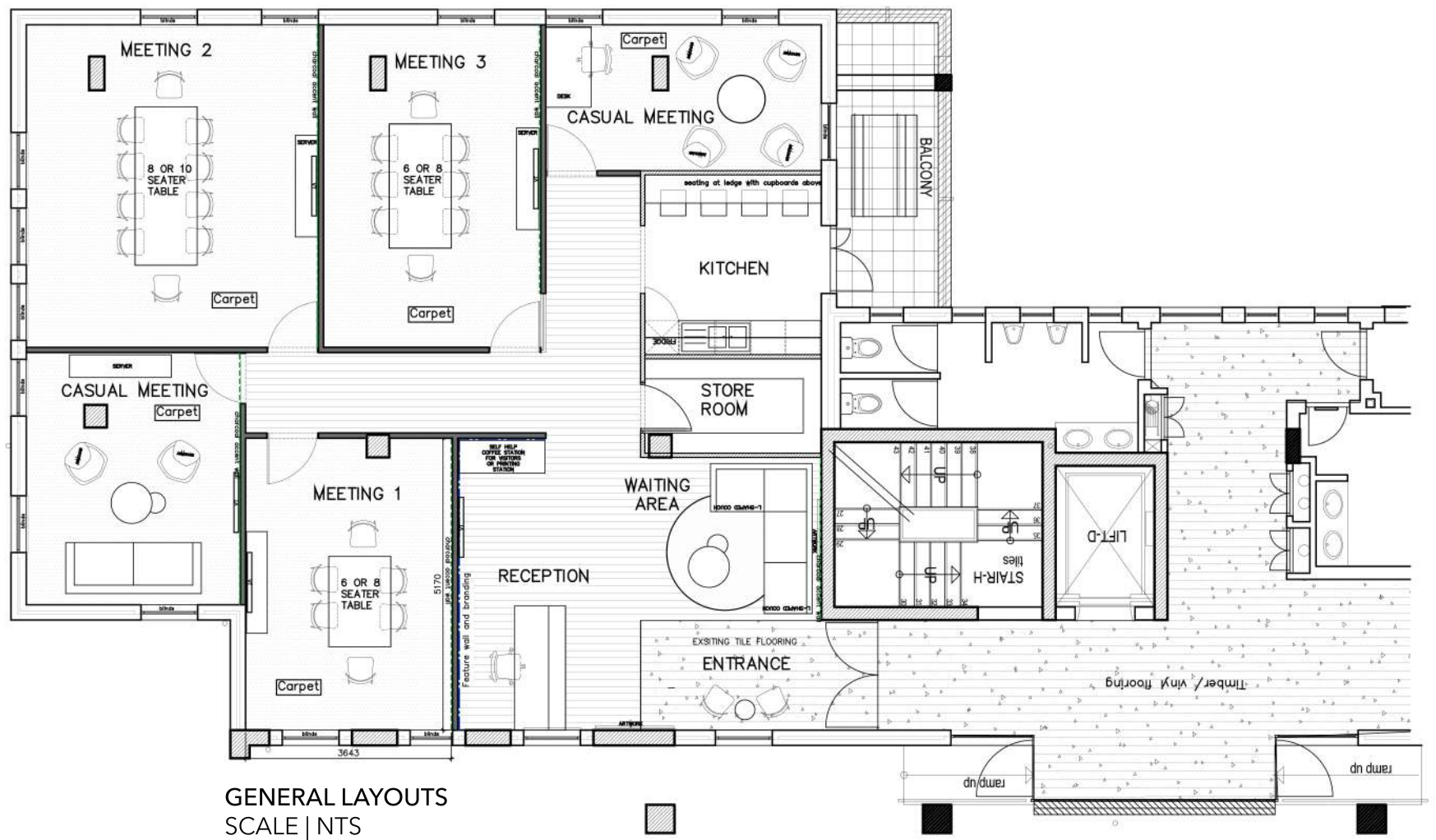
CONCEPT

BLAUW CHAIR, AN ECO FRIENDLY, UPCYCLED CHAIR. MY CHAIR DESIGN IS CONTEMPORARY AND LIGHT WEIGHT. A VERSATILE AND STYLISH ADDITION TO ANY SPACE.



SUSTAINABLE CHAIR MADE OUT OF PVC PIPES

WORKING DRAWING PACKAGE



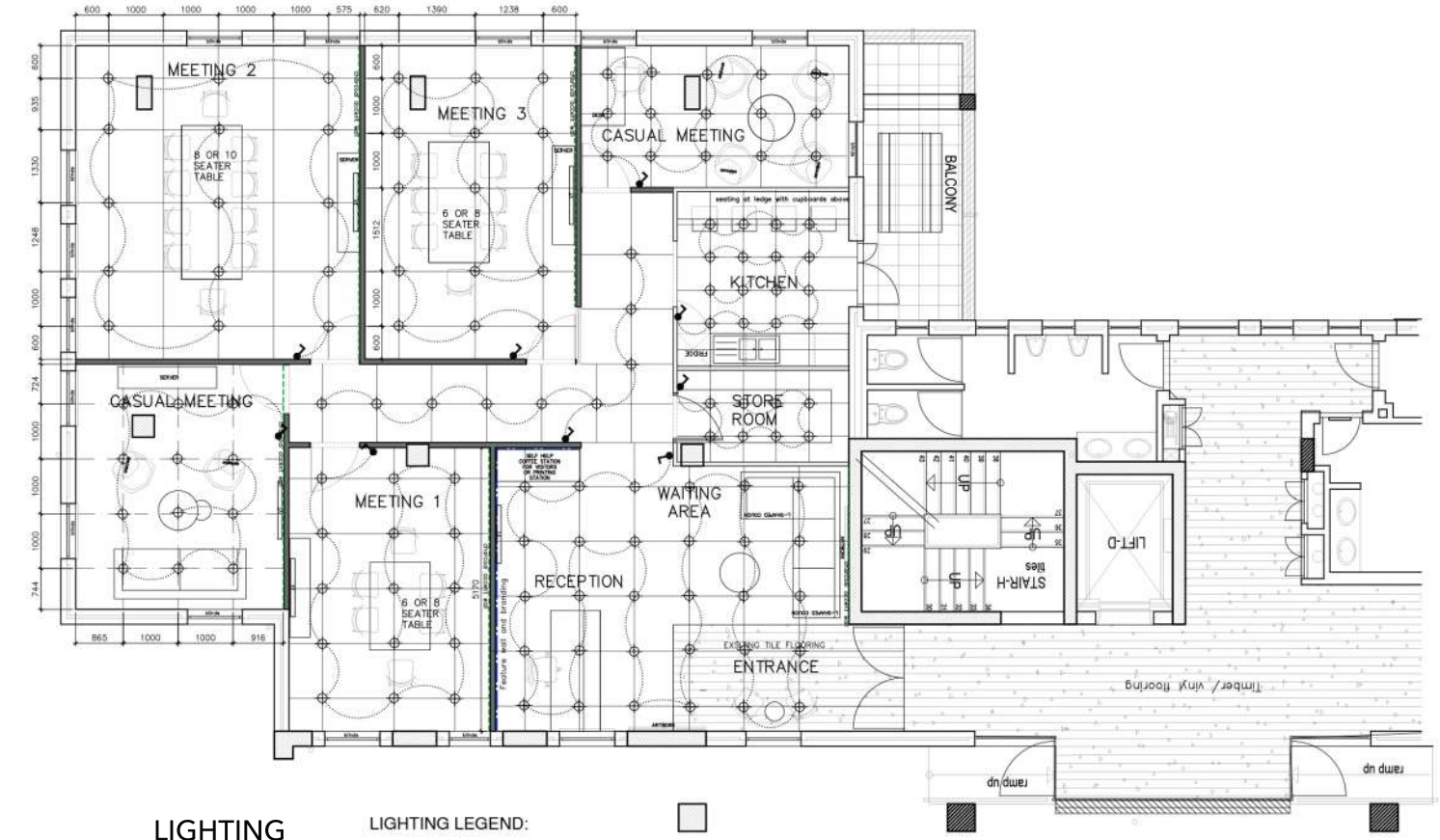


DATA AND ELECTRICAL
SCALE | NTS

ELECTRICAL OUTLET LEGEND:

	16A Dual Switched Socket		Data Point
	16A Single Switched Socket		Telephone Point
	Bell at front entrance with motion sensor		power skirting
	100mm x 100mm Floor box as per spec		TV antenna point
			Data analog phone points for meeting room 1,2,4

NOTES : PLUGS IN ALL PODS TO HAVE THE FOLLOWING:
 - USB
 - 2POINT
 - 3POINT
 ALL PLUGS TO BE AT 300mm AFFL UNLESS OTHERWISE SPECIFIED.



LIGHTING
SCALE | NTS

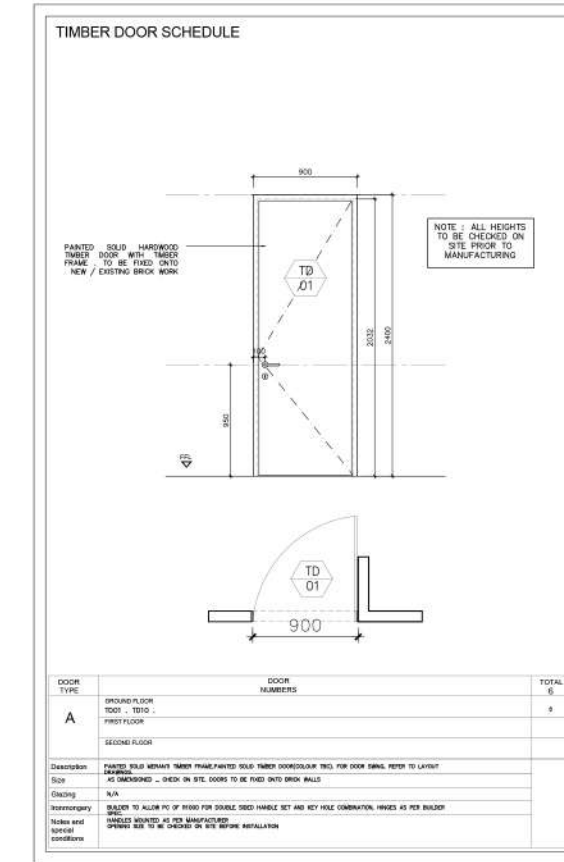
LIGHTING LEGEND:

	LED White down lights with warm light - SPEC TBC. DIRECTIONAL
	Switch: WHITE SWITCH AND COVERPLATE TBC
	CEILING LIGHT SPEC: 600mm x 1000mm TBC



FLOOR FINISHES LAYOUT
SCALE | NTS

-  BELGOTEX CAST EXPOSED COLOUR WRAP
TOTAL: 96M²
-  TERAZZO TILE FROM UNION TILES - CODE W34HP-SL 34m²
-  VINYL HARDWOOD FLOORING BELGOTEX COLOUR MAPLE 64m²
-  TRENTO SKIRTING RUSTIC OAK BUILDERS



DOORS AND WINDOW SCHEDULE
SCALE | NTS

