

AMBER MASON

PORT
FO-
LIO

CONTENTS

01. KSA Kitchens
pages 1 - 4

02. The Archives
pages 5 - 18

03. Caesarstone
pages 19 - 25

04. PG Bison | SIXONEIGHT
pages 26 - 29

05. Vintage with Love
pages 30 - 31

06. Atlantic Studios
pages 32 - 35

07. CAD drawing package
lighting plan
page 36

08. Casa Duende
pages 37 - 38

09. Trill Rd
pages 39 - 40

10. Product design
pages 41 - 42

11. Textiles
page 43

12. Hand Render
page 44

01. KSA Kitchen design competition

BRIEF: Mr D and Mr G are a same sex couple who have recently bought an apartment together, in a trendy part of town. They are renovating this top floor apartment on a budget. They want to reinvent the space to look very high tech and modern.

CONCEPT: The design for this kitchen is to use a combination of light wood textures and a complimentary beige colour palette to create a modern and sophisticated kitchen design. The use of wood creates and a free flowing and open floor plan creates a very organic feel. The kitchen is divided into 3 areas, a bar, the cooking area and a scullery. There are many storage options and a table that may be used as a serving area for the bar or used as part of a preparation counter for cooking. The space is very minimalistic and sleek.



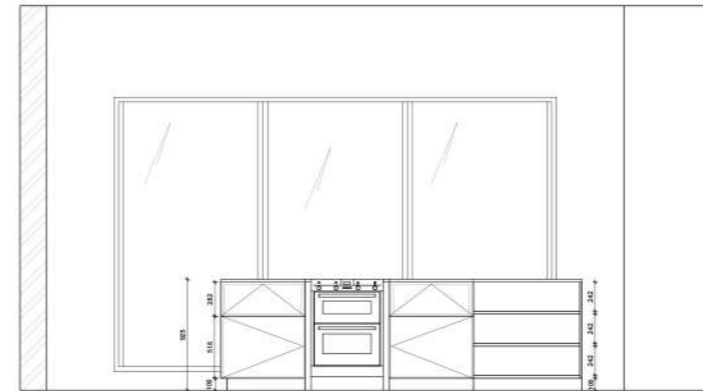
Kitchen island



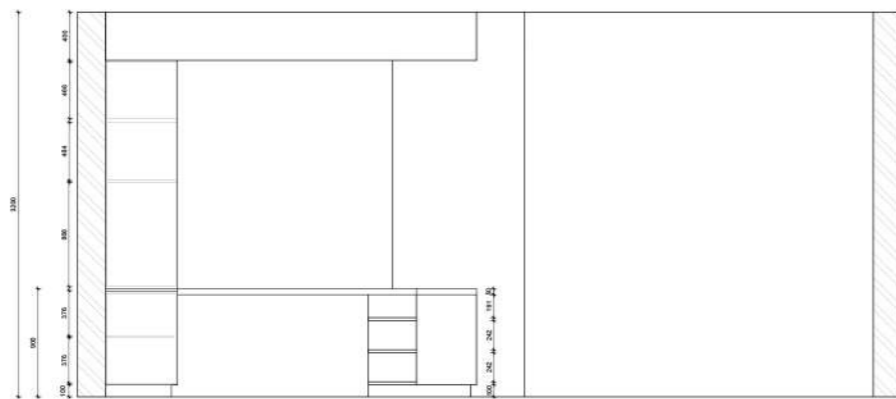
Mini bar



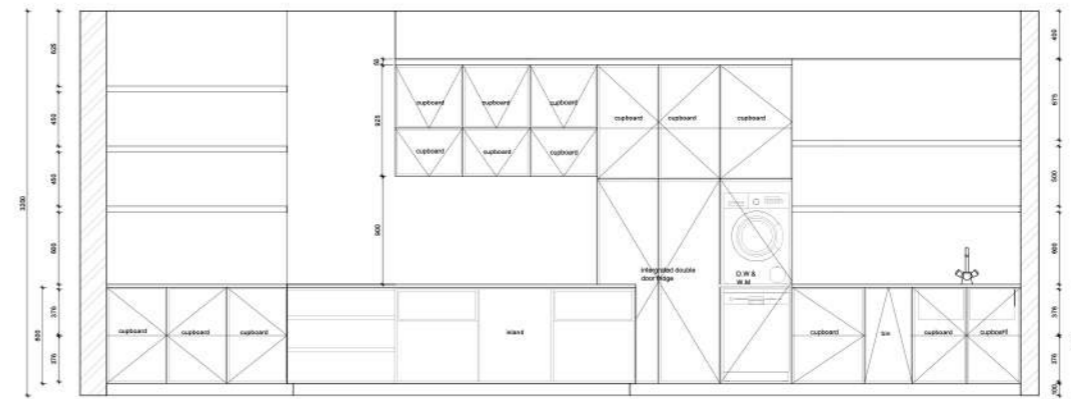
Cabinetry



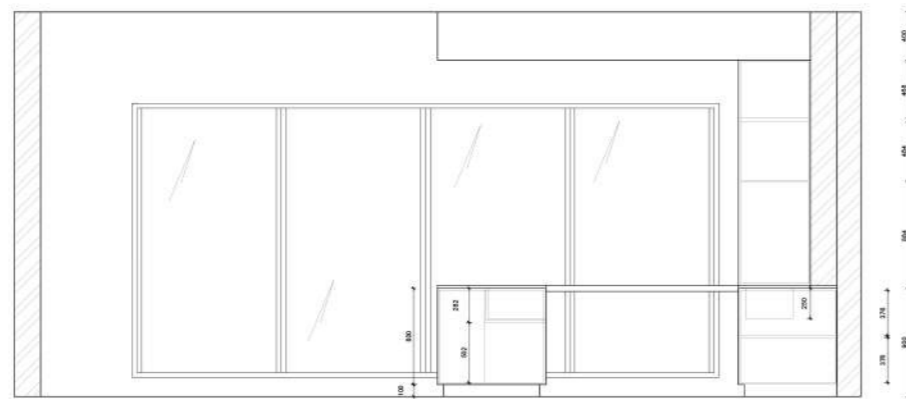
Elevation CC
NTS



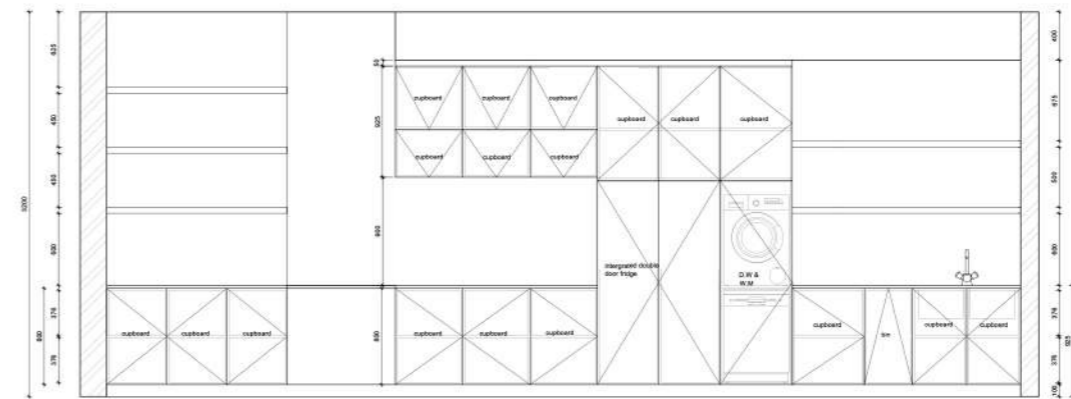
Elevation AA
NTS



Elevation DD
NTS



Elevation BB
NTS



Elevation EE
NTS



Floor Plan
NTS

02. THE ARCHIVES

BRIEF:

A new urban experience in the heart of Woodstock in the form of a luxury Holding Hotel paired with four experiential luxury eco pods.

INSPIRATION:

Sir John Soane (1753-1837) was one of the foremost architects of the Regency era, a Professor of Architecture at the Royal Academy, and a dedicated collector of paintings, sculpture, architectural fragments and models, books, drawings and furniture. By the time of his death, his home had become a museum.

CONCEPT:

The Hotel is called the Archives. Inspired by this beautiful story, the holding hotel is a place where interior designers can bring their clients to view a collector's personal collection of art, sculpture, furniture, antiques and materiality. They are able to source these items or simply gain inspiration from the space. The hotel is eclectic, contrasting with its different combinations of materials, fabrics and use of modern v.s vintage furniture pieces. There is a balance of work and play. There is a sense of exploration as you wonder through the space, you discover something new to observe. It is a sensory overload, in a good way.

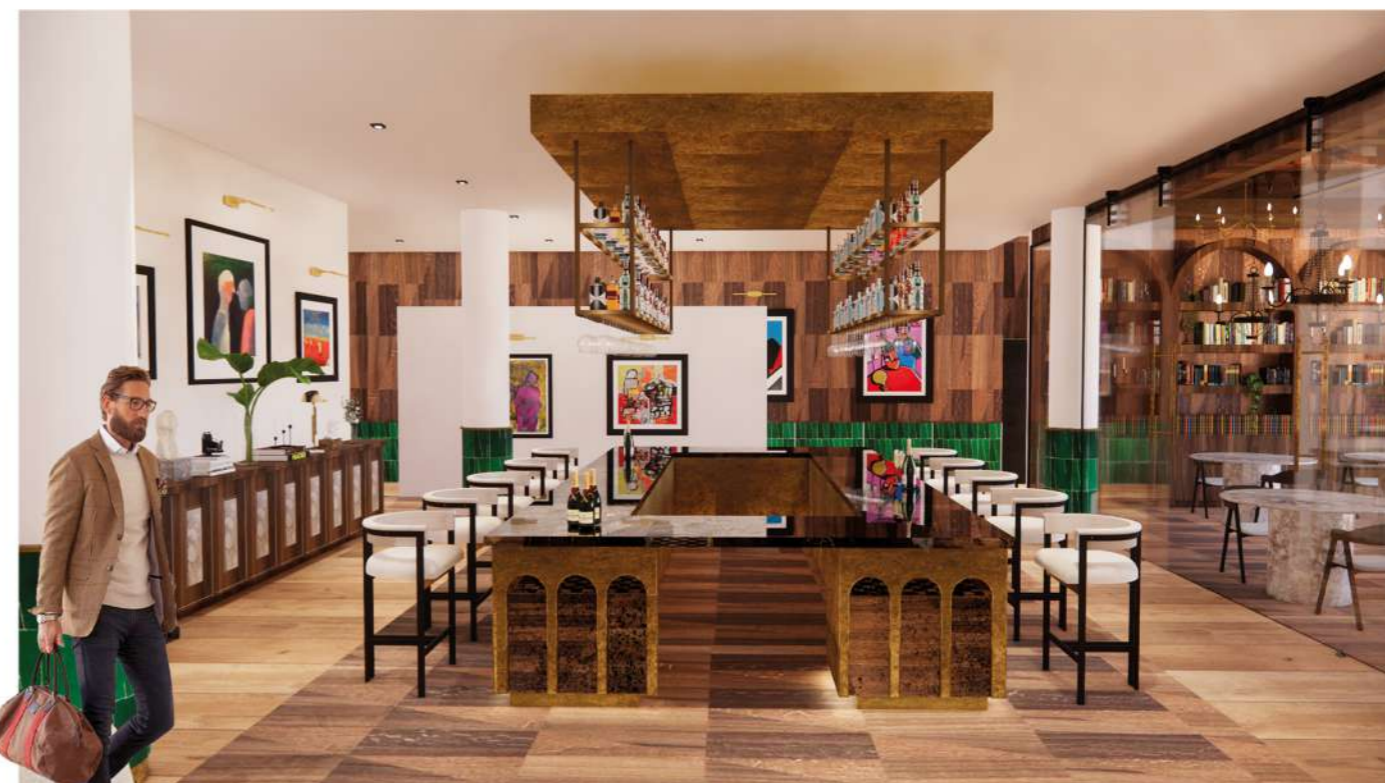
After your stay in the hotel, you arrive at the pods. The pods are designed for a breath of fresh air. There is an intended difference in the design. They are minimalist. After your working adventure in the city, you are able to fully relax in your peaceful pod.



Hotel slow lounge and bar



Reception



Bar



Hotel slow lounge



Tapas restaurant

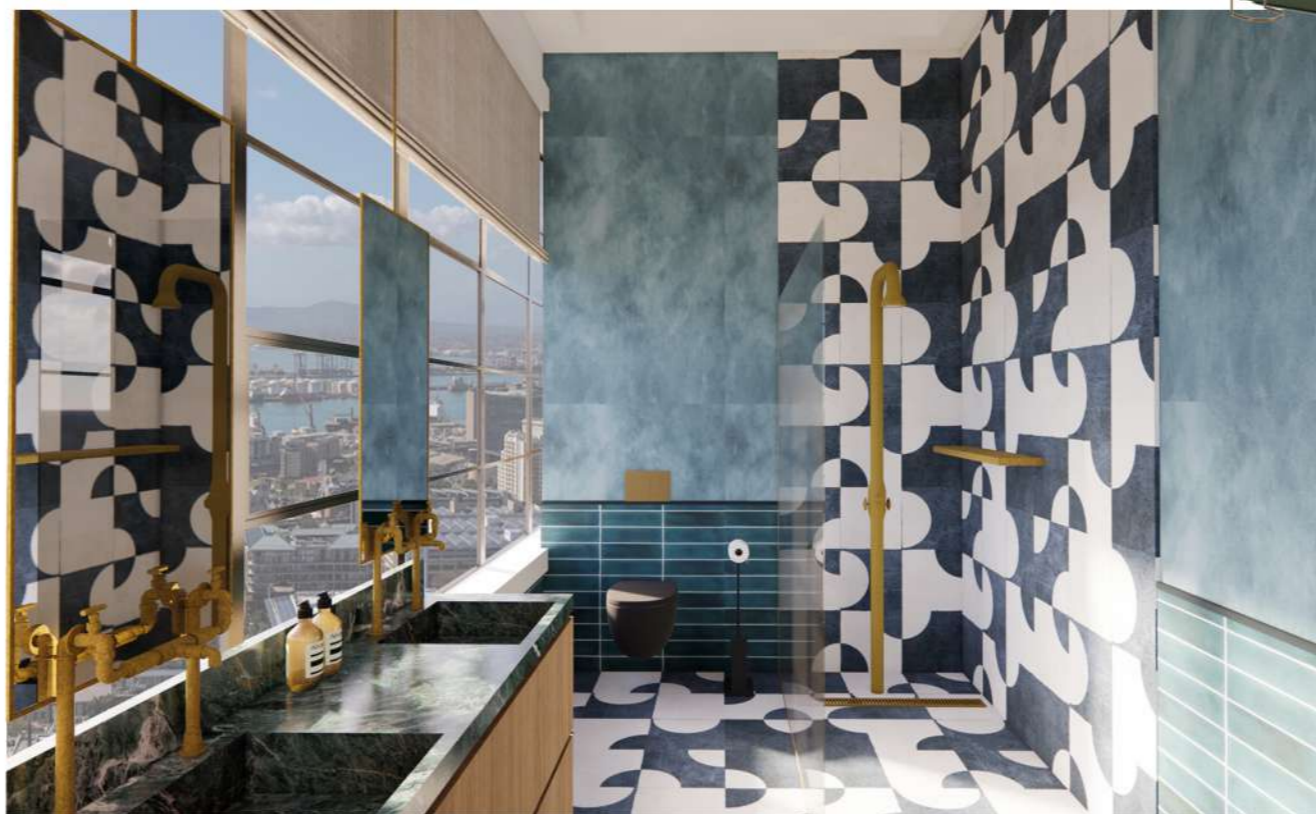




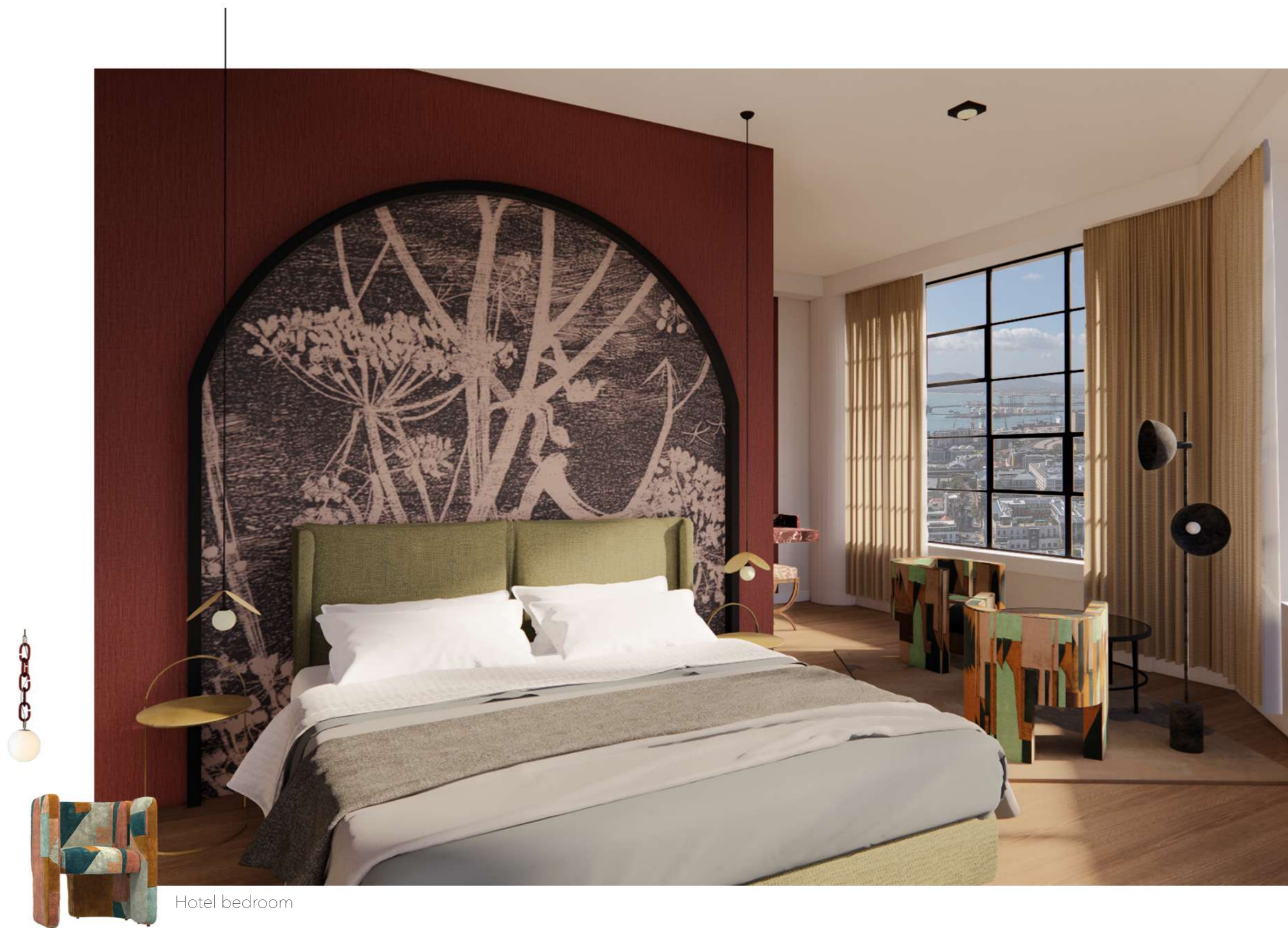
Hotel bedroom



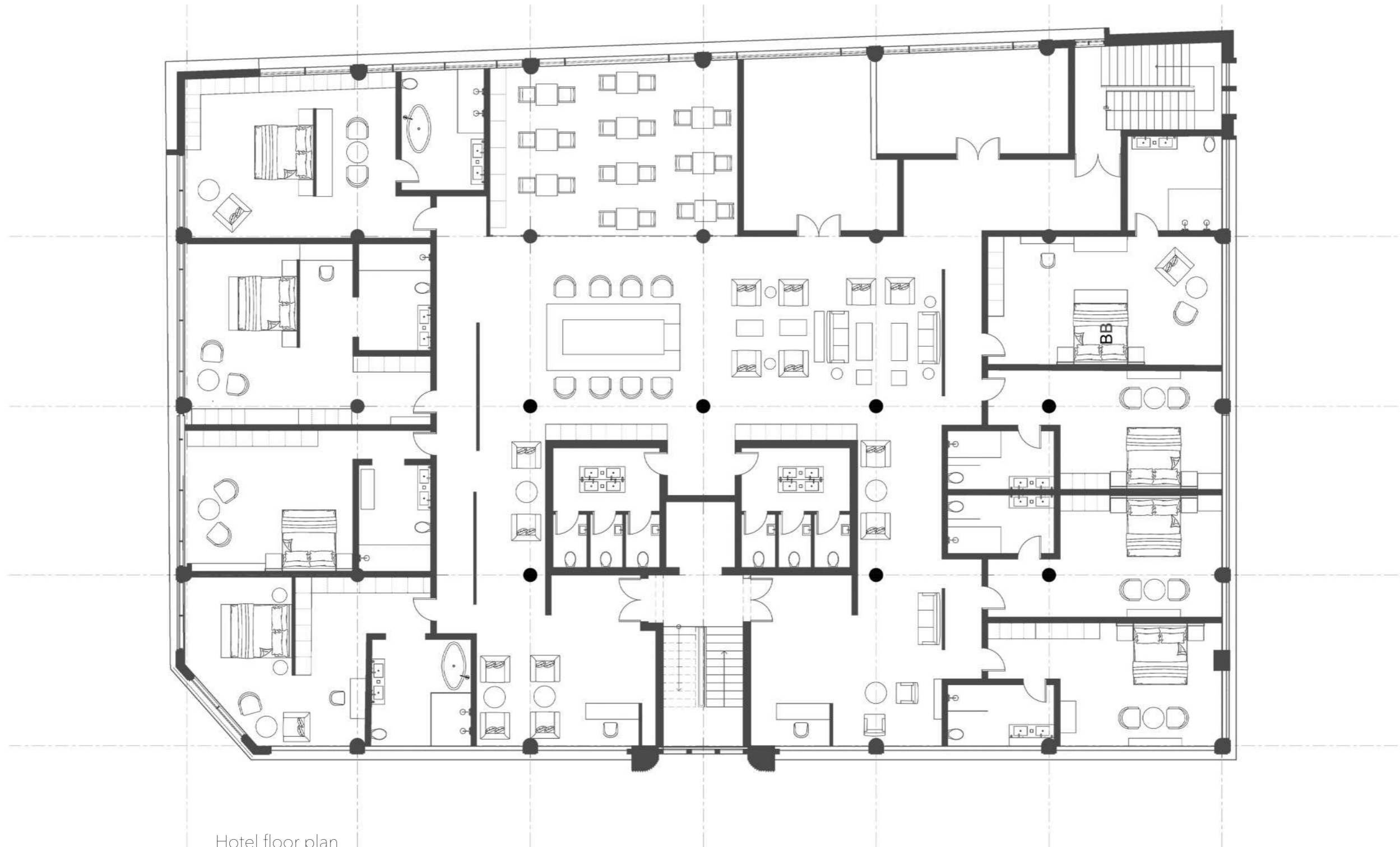
Seating area



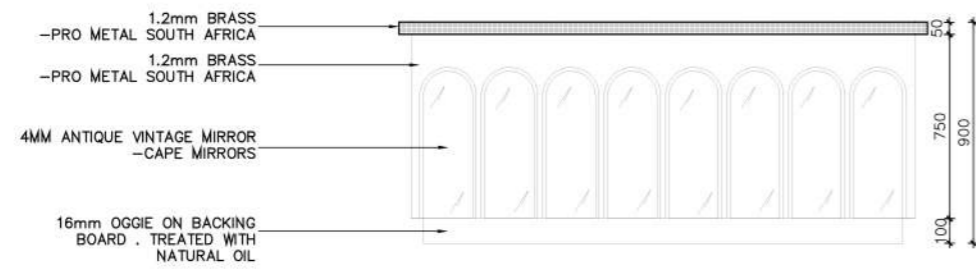
Bathroom



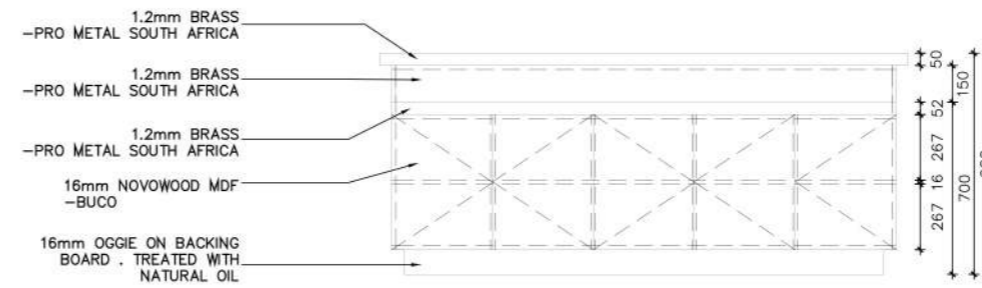
Hotel bedroom



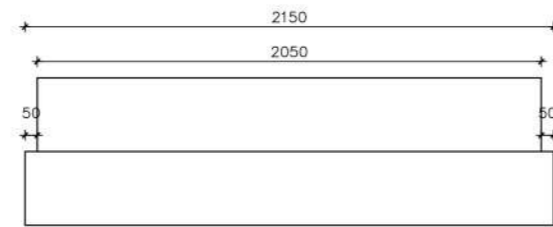
Hotel floor plan
NTS



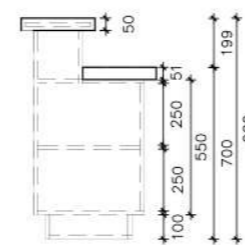
Front elevation



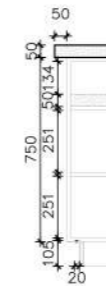
Back elevation



Plan

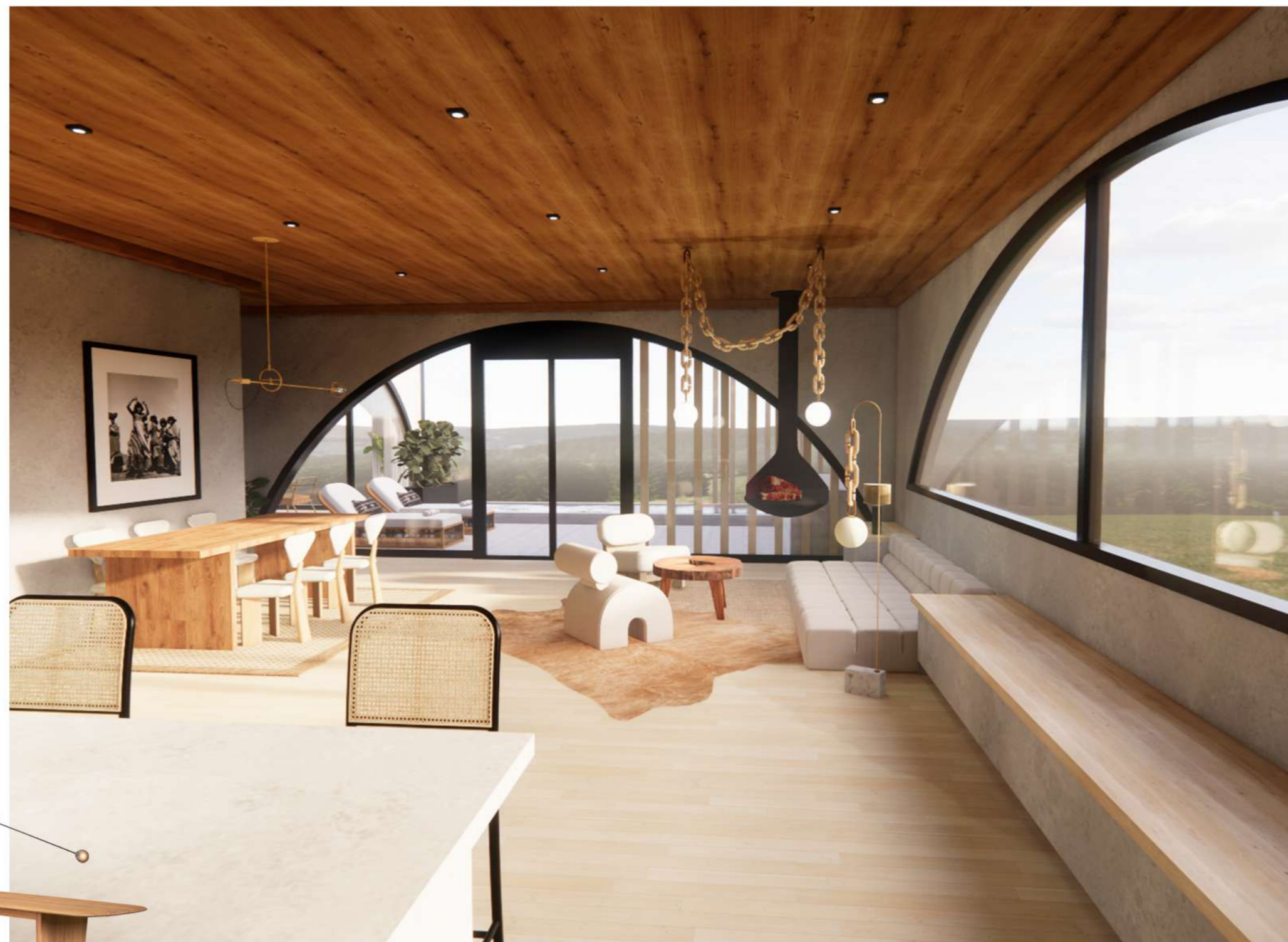


Section



Detailed elevation

Joinery
Reception desk
NTS



Three bedroom pod lounge



Master bedroom



Guest bedroom



En-suite bathroom



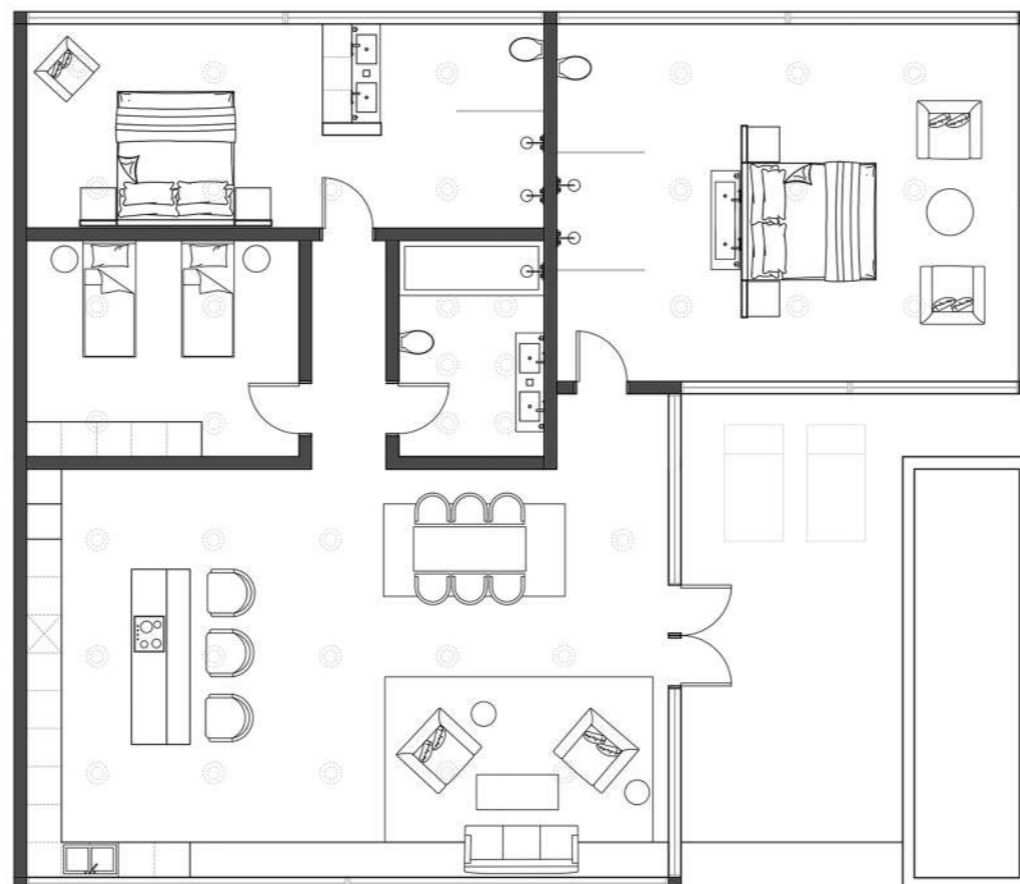
One bedroom pod



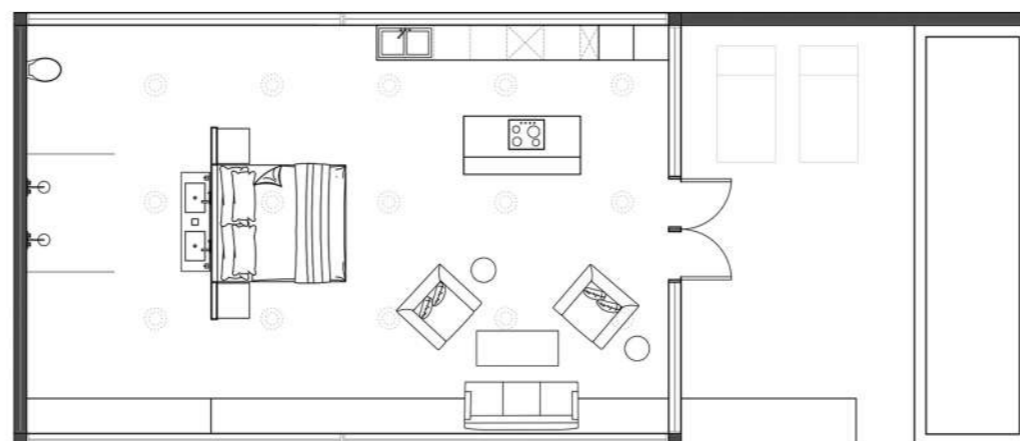
One bedroom pod - view from bed



Outside area



Family pod floor plan
Scale 1:100



Family pod floor plan
Scale 1:100

⊙ downlights

03. Caesarstone Competition

BRIEF:

The 2022 Caesarstone brief was to reimagine and rebuild The Home of South African Democracy, understanding that the National Assembly of 2022 and Beyond, hereon will be the space within which our country's future will be navigated. The considerations included to keep the renovation as simple as possible, re-imagine the exterior and interior design language, consider Afrofuturism and to be bold.

CONCEPT:

'From Ashes we Rise' is a powerful statement, signifying that after devastation we can and will rise above. The National Assembly endured a fire recently and required reconstruction in the roof and ceiling. This design signifies the growth after damage. The greenery exemplifies the regrowth and life after a fire has occurred. The green carpet that runs from the outside inwards is a visual example of breathing life back into parliament. The rooftop garden is an example of how something beautiful can be created after devastation has occurred.

The design for the National Assembly celebrates South Africa's culture and its promising future. Afrofuturism is woven into this design in order to show the pride and strength the countries citizens hold to live in South Africa. There is a combination of traditional shweshwe patterns and natural materials that pays homage to the country's roots. These geometric patterns found in South African textiles translate to futuristic attributes. Afrofuturism holds values similar to the citizens of South Africa and the hardships our country has endured. The movement hands power back to it's people. This is

liament and the National Assembly reflect unity, harmony, contrast, vibrance and a little chaos. These attributes may also be identified in South Africa's society.

Special mention: In-house top 5 candidate

PASS
VIP

THIS IS YOUR INVITATION TO THE GRAND OPENING OF THE NEW NATIONAL ASSEMBLY

From Ashes we Rise is a powerful statement, signifying that after devastation we can and will rise above. The National Assembly endured a fire recently and required reconstruction in the roof and ceiling. This design signifies the growth after change. The gateway symbolizes the progress and the future that has occurred. The green carpet that runs from the outside towards is a visual example of breathing life back into parliament. The rooftop garden is an example of how something beautiful can be created after devastation has occurred.

The design for the National Assembly celebrates South Africa's culture and its promising future. Architecture is woven into the design in order to show the pride and strength the country citizens hold to live in South Africa. There is a combination of traditional indigenous patterns and natural materials that goes through to the country's roots. These geometric patterns found in South African textiles translate to graphic attributes. Architecture helps visitors arrive to the spirit of South Africa and the heritage our country has created. The movement flows from back to its roots. This is something that South Africa prides itself on as the rainbow nation. The design for Parliament and the National Assembly reflect unity, harmony, contrast, vibrancy and a life cycle. These attributes may also be identified in South Africa's society.



THE NEW NATIONAL ASSEMBLY



THE NATIONAL ASSEMBLY



PERNER + GENERAL SEATING



PERNER + GENERAL SEATING



PERNER + GENERAL SEATING



PERNER + GENERAL SEATING



PERNER + GENERAL SEATING



PERNER + GENERAL SEATING



ROOFTOP BAR



ROOFTOP BAR + LOUNGE AREA



ROOFTOP BAR AT NIGHT



ROOFTOP BAR AT NIGHT



ROOFTOP BAR AT NIGHT



ROOFTOP BAR SEATING AREA



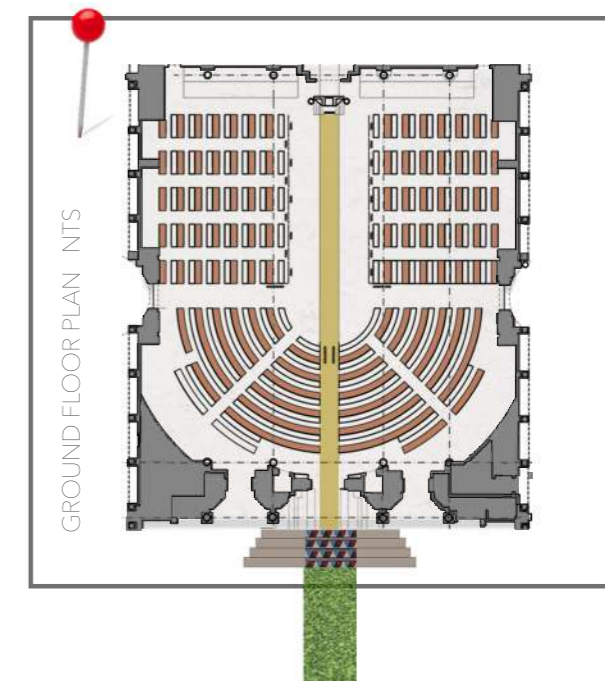
ROOFTOP BAR ENTRANCE AT NIGHT



ROOFTOP PLAN INTS



Competition Submission



The New National Assembly



Rooftop bar



Rooftop bar seating area



Rooftop seating area



Rooftop Elevator - night scene



The National Assembly



Speaker and General seating

AIRY CONCRETE



Speaker and General seating

AIRY CONCRETE SNOW WHITE



General seating

AIRY CONCRETE



Balcony seating

AIRY CONCRETE SNOW WHITE

04. PG Bison competition

BRIEF:

The Coega Development Corporation has issued a RFP to assist in providing a design for a mixed-use residential and retail space. The design proposal must redefine the market's perceptions and expectations of housing in this category, providing a "real world problem." The solution must be regarded as the new innovative footprint for future developments of similar nature, the next evolutionary step in housing the masses.

CONCEPT: 16IXONEIGHT is a mixed-use residential and retail space. The concept for this space is to create a community. It encourages residents to socialize and build connections with their neighbours. That being said, privacy and security are just as equally incorporated into the design. The space is strategically planned to give it's residents the ability to relax and feel safe in their own homes. The overall design for 16ONEIGHT is to feel like a home. A warm and inviting space where people will want to spend time in, away from stressful days of work. Although this is low cost housing, the design has a modern and clean feel to it. A neutral colour palette and natural materials are combined to create a relaxing and calm space. Subtle African design elements have been incorporated to celebrate African culture.



Bedroom



Bathroom



Window view



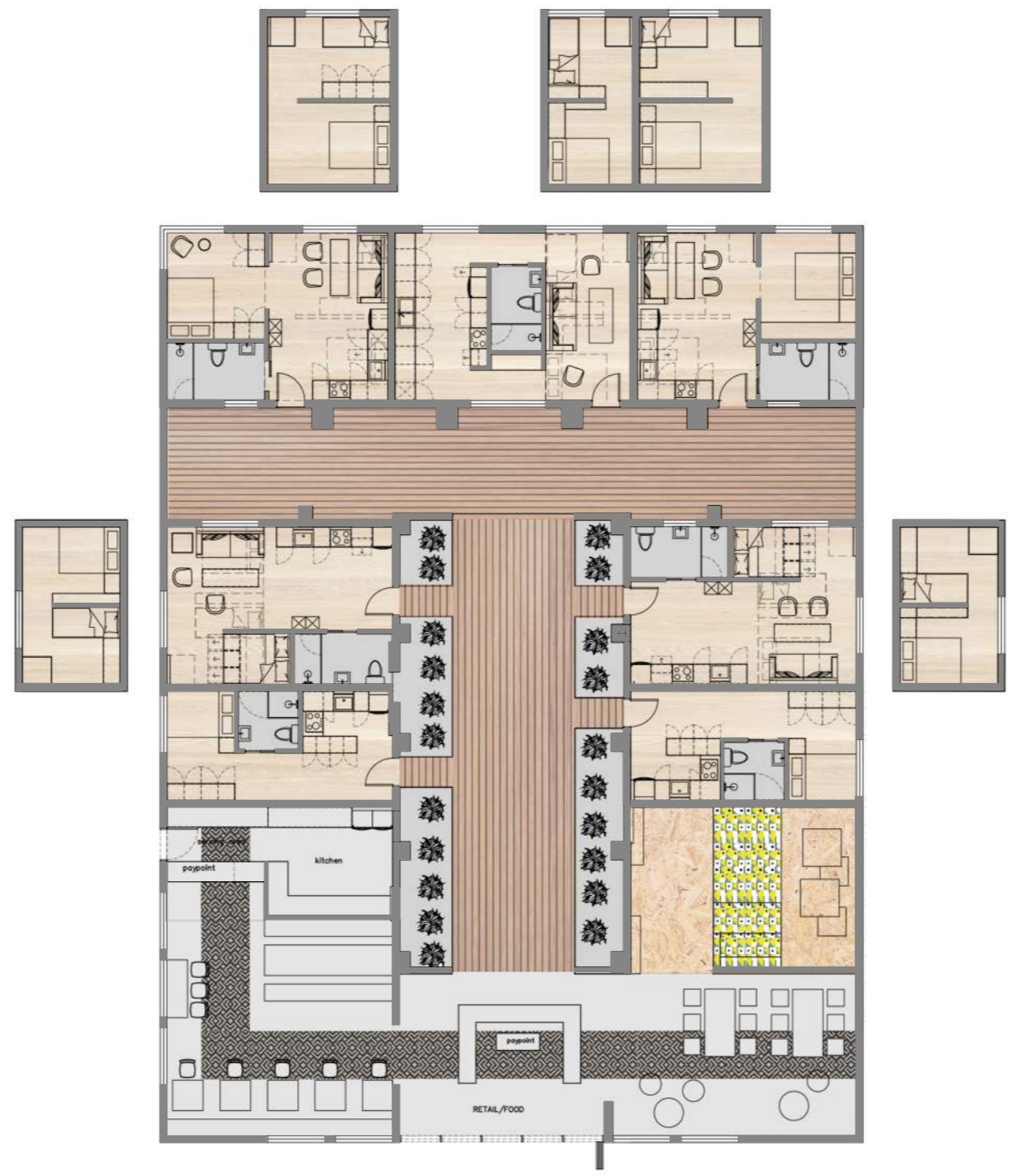
Studio apartment



Studio apartment kitchen



Restaurant



Floor plan
NTS

05. Vintage with Love competition | group project

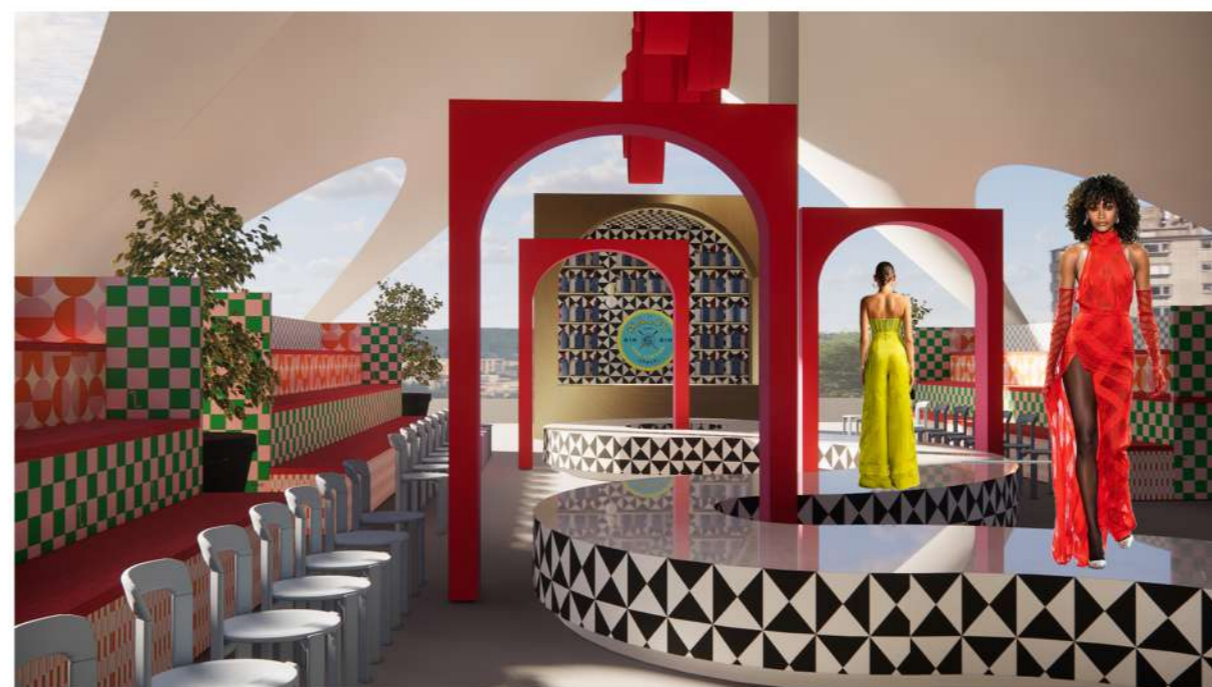
BRIEF:

The Vintage with Love team has tasked you to design their next show stopping event at the Cape Town Cruise Terminal at the V&A Waterfront. You need to design the event and a conceptual fashion show.

CONCEPT

Our aim for Vintage with Love's fashion event is to create a fun, immersive and functional space. We are using a combination of prints and an integrated use of vibrant colours. We want the consumers to feel energetic and happy to spend! As this is a literacy charity event, we used paper as the main medium for our art installations. The book hanging from the ceiling is a direct reference to the charity. We want to educate the consumer regarding the charities they support through shopping at Vintage with Love. The use of bright colours and contrasting patterns reflects the idea of thrift shopping, it is the concept of many different garments that look completely different placed next to each other.

Special mention: In-house winner



Fashion show



Fashion show



Event lounge and bar

06. Atlantic Studios competition

BRIEF:

Atlantic Studios film studio has approached you to redesign their space with a fresh look on a budget.

CONCEPT:

The 'new look' I had envisioned for Atlantic Studios is a much more bright, fresh and energized feel. Atlantic Studios is a film studio where many actors spend their day, actors are perceived to have a very vibrant personality, so why not make the space they spend many long hours match that? The colour palette is very light, with neutrals and pops of colour. The combination of light wood accents and gentle toned fabrics, contrasted with bright and textured wallpapers. The crew room has a slight contrast to the rest of the design, as crew are also much different from actors. It's more masculine with a darker colour palette. The red pieces of furniture seem illuminated against the navy and gold wallpaper. The space is, for lack of a better word 'vibey'. Overall the entire design is kept modern and chic, with simple pieces of furniture and a complementing colour palette. You can feel relaxed here, either before and after work or even in between takes.

Special mention: Top 5 candidate



Canteen



Canteen



Cast room



Slow lounge



Crew room

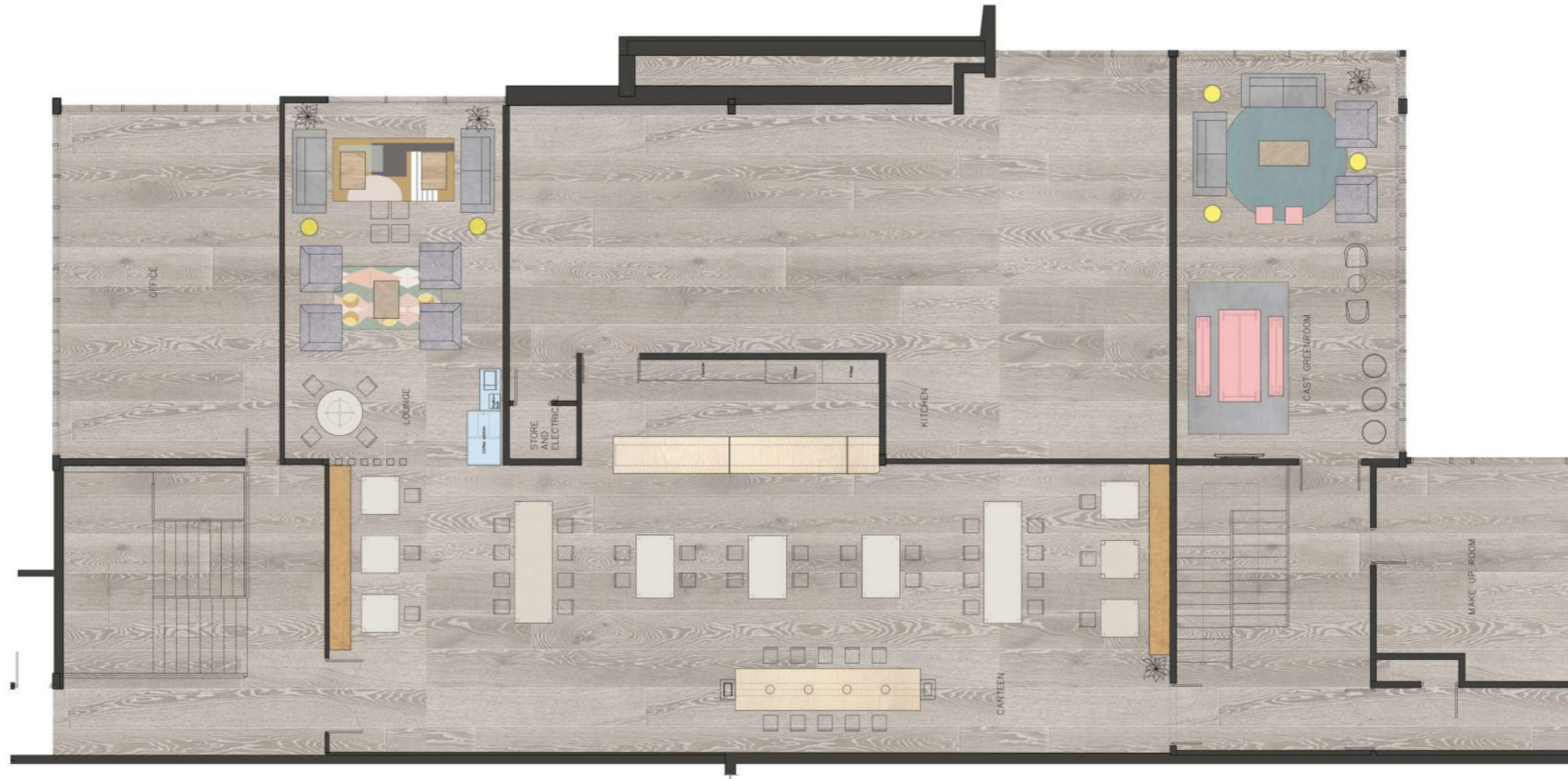


Crew room

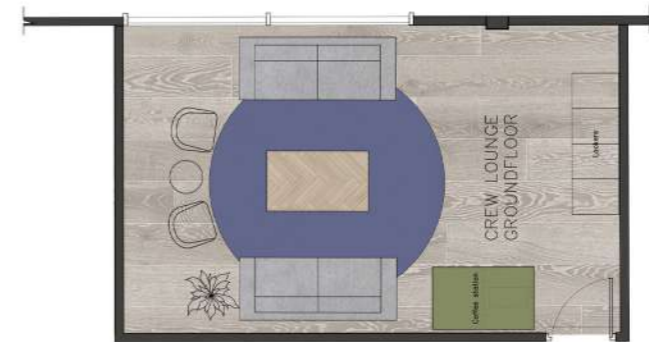


Materials board

- 1. Trish Wallpaper - Cara Saven
- 2. Light wood - Oggie
- 3. Husky, marigold - Hertex
- 4. Domain A224 - Dulux
- 5. Mosaico Vero Mattoni Tangerine - Stiles
- 6. Mosaico Vero Mattoni Bianco - Stiles
- 7. Stinson, Mediterranean- Hertex
- 8. Magical, silver lining - Hertex
- 9. Gesneden Blad Blue Water Cream - Robin Sprong
- 10. Algae F8796 - Formica
- 11. Head to toe Wallpaper - Cara Saven
- 12. Jive, grey - Hertex
- 13. White half duck A216 - Dulux
- 14. Gesneden Blad Warm Yellow Cream - Robin Sprong
- 15. Pink revelation- Dulux
- 16. Peaceful Blue F0231 - Formica



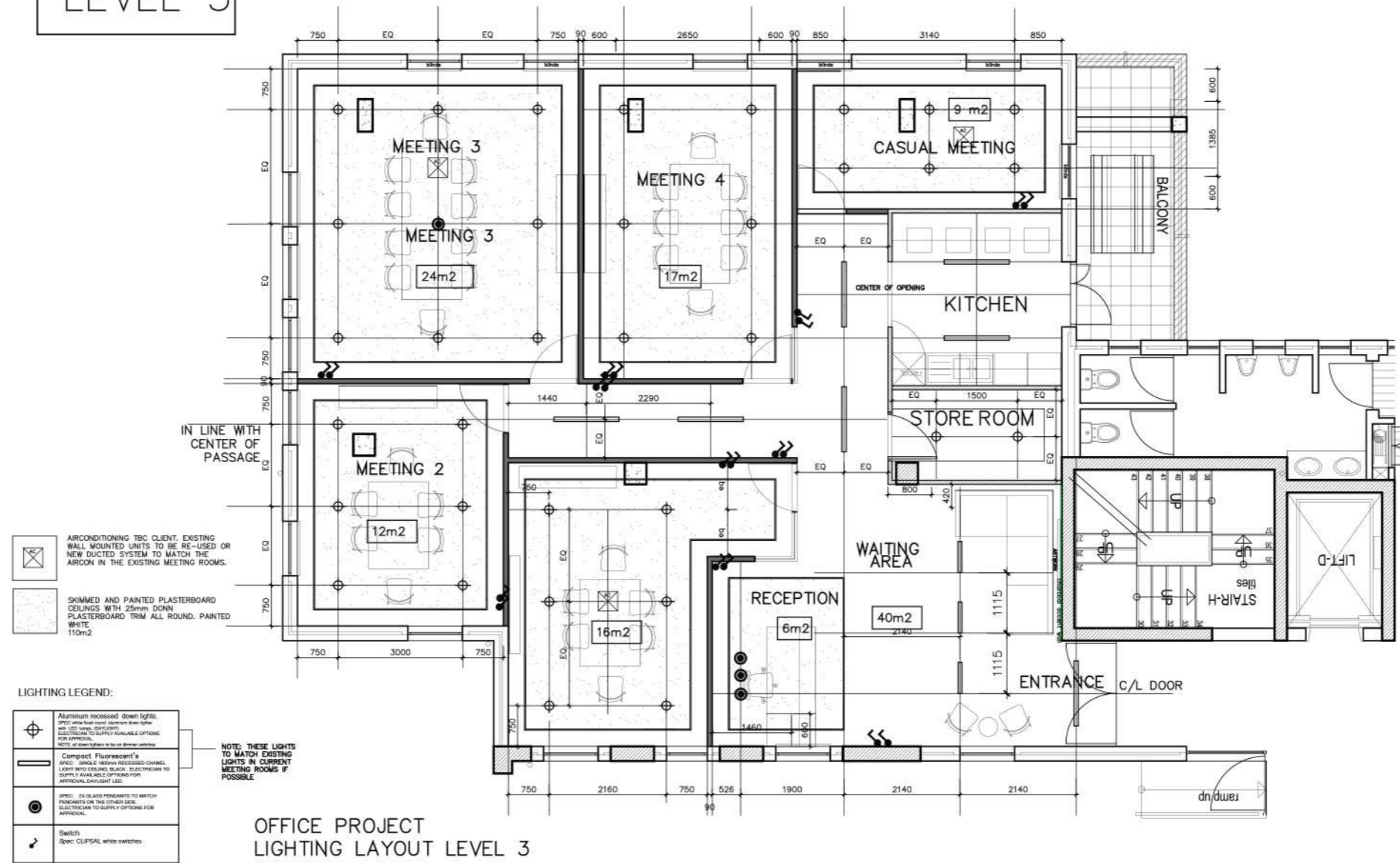
Atlantic Studios Second floor
NTS



Atlantic Studios First Floor
NTS

07. CAD Drawing package | lighting plan

LEVEL 3



OFFICE PROJECT
LIGHTING LAYOUT LEVEL 3
SCALE 1:50

08. Casa Duende | group project

BRIEF:

To design a luxury tree house for people in the creative field. A space that allows them to take time outside of society to be able to relax and produce their work.

CONCEPT:

Casa Duende, our space was fashioned to serve two creative individuals by giving them a personalized space in which they can relax and produce works of their own. We chose to curate our tree house for a writer, author, or poet. We were heavily inspired by all-natural, organic, and biophilic designs. A domed cylindric space, generated by 3D printing concrete to achieve our envisioned free-flowing organic interior, that seamlessly meshes with the shell of the building itself. The interior space is natural as to embrace its surroundings. The colours are muted, earth-toned colour palette with furniture feature pieces to match complimented by Spanish art.



Bedroom



Elevation level 2
CC
NTS



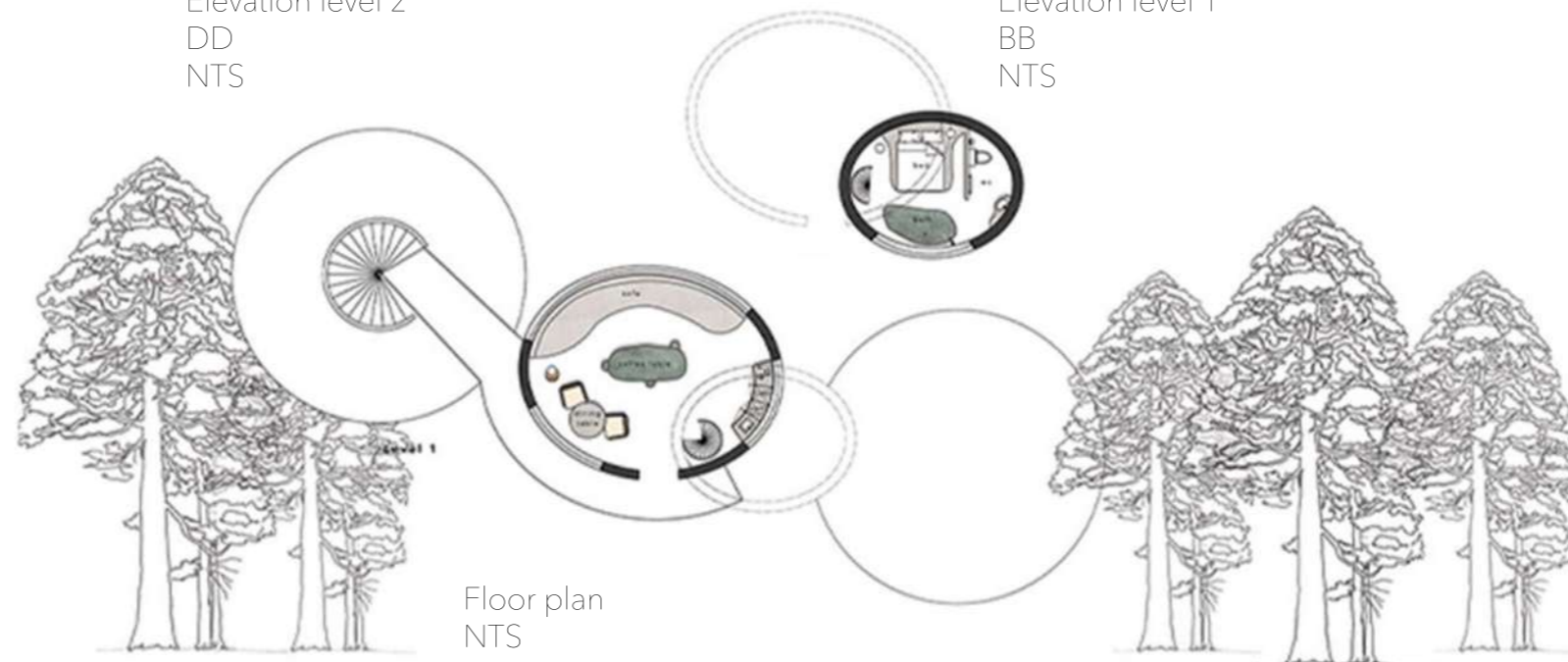
Elevation level 1
AA
NTS



Elevation level 2
DD
NTS



Elevation level 1
BB
NTS



Floor plan
NTS

09. Trill Rd

BRIEF:

Your client is a financial business executive (aged 32-45) He will be sharing the space with his wife, she is a well published writer. They have purchased this property as a long term residence. This client is looking for a combination of modern and classic elements, still in keeping with current trend, but fused with a softer, more sophisticated feel. They are very specific about not wanting something that will date quickly, and although on first impression they seem quite ordinary, when it comes to good taste and style, they know what they're talking about.

CONCEPT:

The design concept was to create a very relaxing space with soft colour palette, a use of natural materials such as timber, marble and precious stone to allow the couple to enjoy a relaxing space to come home to after work. Considering that the wife is a writer, there is a prominent sage green wrap around book shelf in the dining room, serving as a design feature. The entire house can be considered as a 'reading nook' as there is comfortable seating options placed around the home. The space has a classic feel to it, as there are traditional accents. There is a combination of modern and classic furniture pieces. The space has a romantic essence to it, with its floral wallpaper and warm colours that echo throughout the space. There is abstract art and unique modern furniture pieces that exemplify the couples sense of style and taste.



Dining room



Guest bedroom



Bathroom



Working area



Materials board | living



Materials board | bathroom

10. Product Design

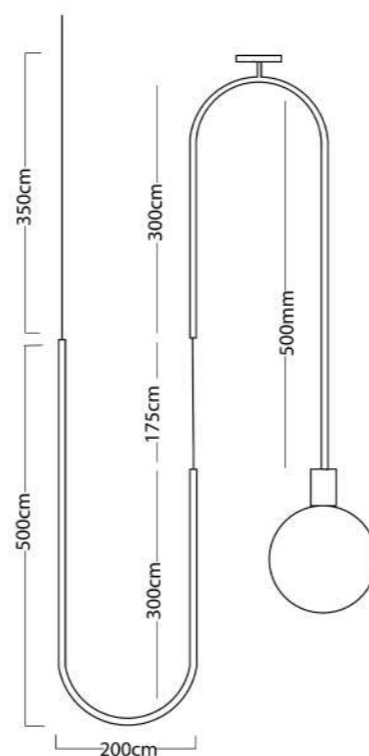
The meander light

The concept behind my design was to create a light that fitted perfectly into a relaxing space, which is why I abandoned any idea of structure or bright colour. I decided to use steel tubing that consists of two curved shapes, which is why my light has the name 'Meander' as it's denotations consists of very free flowing, organic and calming attributes, reminding me of a river meandering through a valley. I intended to make each steel tube at different heights, to contribute towards the idea of free form and devoid of structure. The light is uniform in colour as it brings a harmonious feel to the light.

SIMPLE PLAN
NTS



SIMPLE ELEVATION
NTS



materials and fittings

3M RAYON COVERED ELECTRICAL CABLE IN DARK GREY
LED Opalina Bulb
CYLINDRICAL METAL E27 LAMP HOLDER IN BRUSHED TITANIUM

components:

| cable | steel pipe 12mm | bulb | spray paint | ceiling rose | lamp holder |





sanded timber



leather cord in beige, brown, black and yellow

The inspiration for this stool came from the original structure itself. The parallel rods in the body of the stool brought Japanese attributions to my mind which therefore made me decide to continue with that narrative. I decided to sand down the timber and keep it in its natural state and continue with the natural and organic feel. I used leather cord to create a weaving pattern on the seat of the stool. I used neutral colours and a pop of yellow to add another design factor. Altogether you find a stool that can accentuate any calm and relaxing environment. This inspired the name of the stool, which means to reflect as a stool can easily be the tool used to encourage this practice.

11. Textile Design



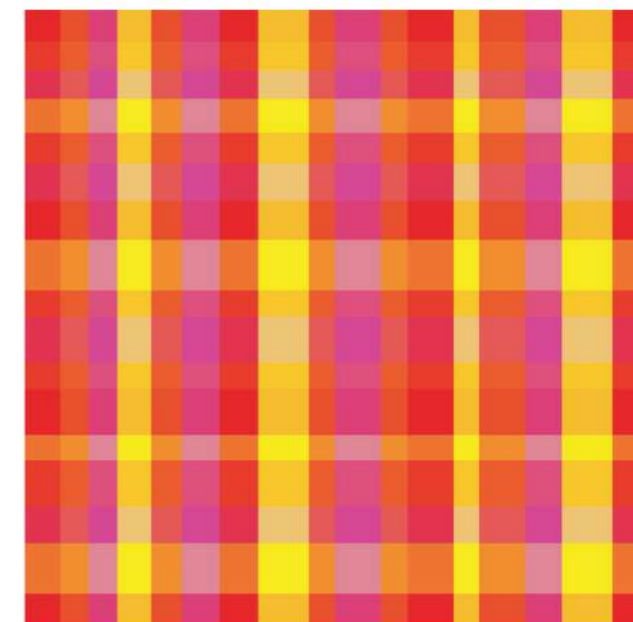
Pattern blocking



Give it wings



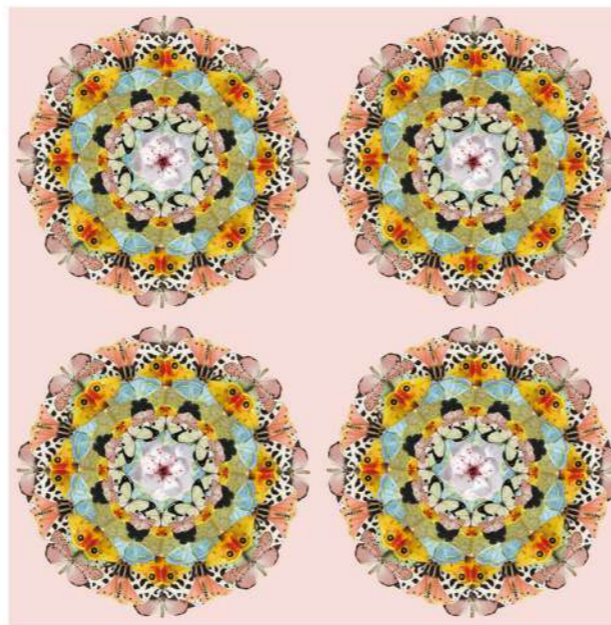
Delft



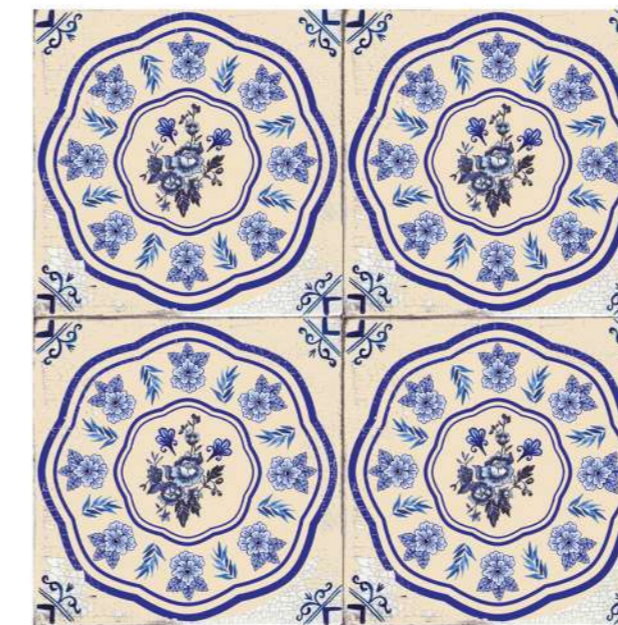
Tartan weave



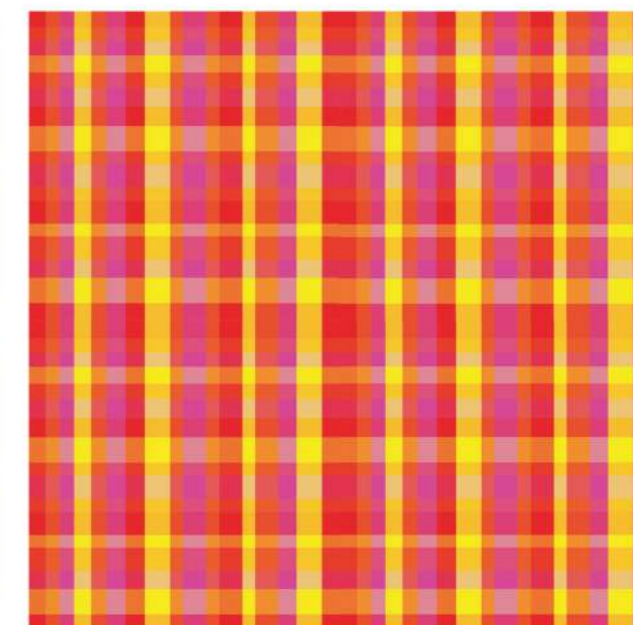
Pattern blocking repeat



Give it wings repeat



Delft repeat



Tartan weave repeat

12. Hand Render

